



# Full wwPDB X-ray Structure Validation Report ⓘ

Mar 4, 2024 – 08:48 AM EST

PDB ID : 1EYE  
Title : 1.7 ANGSTROM RESOLUTION CRYSTAL STRUCTURE OF 6-HYDROXYMETHYL-7,8-DIHYDROPTEROATE SYNTHASE (DHPS) FROM MYCOBACTERIUM TUBERCULOSIS IN COMPLEX WITH 6-HYDROXYMETHYLPTERIN MONOPHOSPHATE  
Authors : Baca, A.M.; Sirawaraporn, R.; Turley, S.; Sirawaraporn, W.; Hol, W.G.J.  
Deposited on : 2000-05-05  
Resolution : 1.70 Å(reported)

This is a Full wwPDB X-ray Structure Validation Report for a publicly released PDB entry.

We welcome your comments at [validation@mail.wwpdb.org](mailto:validation@mail.wwpdb.org)

A user guide is available at

<https://www.wwpdb.org/validation/2017/XrayValidationReportHelp>

with specific help available everywhere you see the ⓘ symbol.

The types of validation reports are described at

<http://www.wwpdb.org/validation/2017/FAQs#types>.

---

The following versions of software and data (see [references ⓘ](#)) were used in the production of this report:

MolProbity : 4.02b-467  
Mogul : 1.8.5 (274361), CSD as541be (2020)  
Xtrriage (Phenix) : **NOT EXECUTED**  
EDS : **NOT EXECUTED**  
buster-report : 1.1.7 (2018)  
Percentile statistics : 20191225.v01 (using entries in the PDB archive December 25th 2019)  
Ideal geometry (proteins) : Engh & Huber (2001)  
Ideal geometry (DNA, RNA) : Parkinson et al. (1996)  
Validation Pipeline (wwPDB-VP) : 2.36

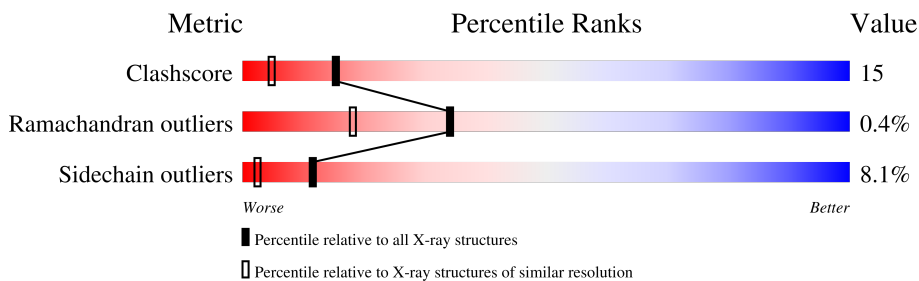
# 1 Overall quality at a glance

The following experimental techniques were used to determine the structure:

*X-RAY DIFFRACTION*

The reported resolution of this entry is 1.70 Å.

Percentile scores (ranging between 0-100) for global validation metrics of the entry are shown in the following graphic. The table shows the number of entries on which the scores are based.



Metric	Whole archive (#Entries)	Similar resolution (#Entries, resolution range(Å))
Clashscore	141614	4695 (1.70-1.70)
Ramachandran outliers	138981	4610 (1.70-1.70)
Sidechain outliers	138945	4610 (1.70-1.70)

The table below summarises the geometric issues observed across the polymeric chains and their fit to the electron density. The red, orange, yellow and green segments of the lower bar indicate the fraction of residues that contain outliers for  $\geq 3$ , 2, 1 and 0 types of geometric quality criteria respectively. A grey segment represents the fraction of residues that are not modelled. The numeric value for each fraction is indicated below the corresponding segment, with a dot representing fractions  $\leq 5\%$ .

Note EDS was not executed.

Mol	Chain	Length	Quality of chain
1	A	280	

## 2 Entry composition [i](#)

There are 4 unique types of molecules in this entry. The entry contains 2123 atoms, of which 0 are hydrogens and 0 are deuteriums.

In the tables below, the ZeroOcc column contains the number of atoms modelled with zero occupancy, the AltConf column contains the number of residues with at least one atom in alternate conformation and the Trace column contains the number of residues modelled with at most 2 atoms.

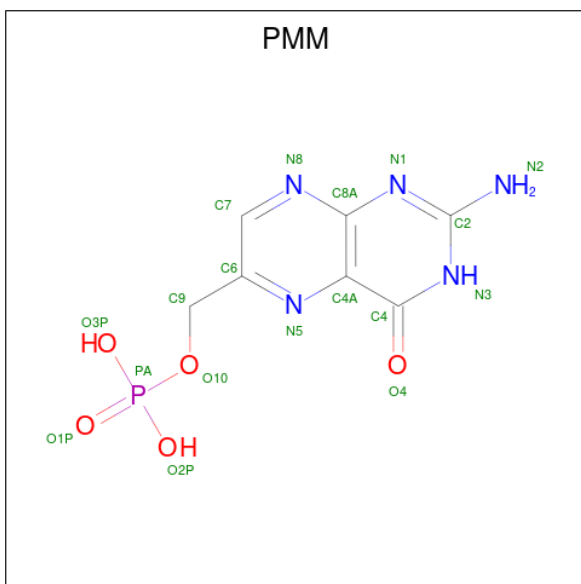
- Molecule 1 is a protein called DIHYDROPTEROATE SYNTHASE I.

Mol	Chain	Residues	Atoms					ZeroOcc	AltConf	Trace
			Total	C	N	O	S			
1	A	256	1860	1167	336	348	9	0	3	0

- Molecule 2 is MAGNESIUM ION (three-letter code: MG) (formula: Mg).

Mol	Chain	Residues	Atoms		ZeroOcc	AltConf
			Total	Mg		
2	A	1	1	1	0	0

- Molecule 3 is PTERIN-6-YL-METHYL-MONOPHOSPHATE (three-letter code: PMM) (formula: C<sub>7</sub>H<sub>8</sub>N<sub>5</sub>O<sub>5</sub>P).



Mol	Chain	Residues	Atoms					ZeroOcc	AltConf
			Total	C	N	O	P		
3	A	1	18	7	5	5	1	0	0

- Molecule 4 is water.

<b>Mol</b>	<b>Chain</b>	<b>Residues</b>	<b>Atoms</b>		<b>ZeroOcc</b>	<b>AltConf</b>
4	A	244	Total 244	O 244	0	0

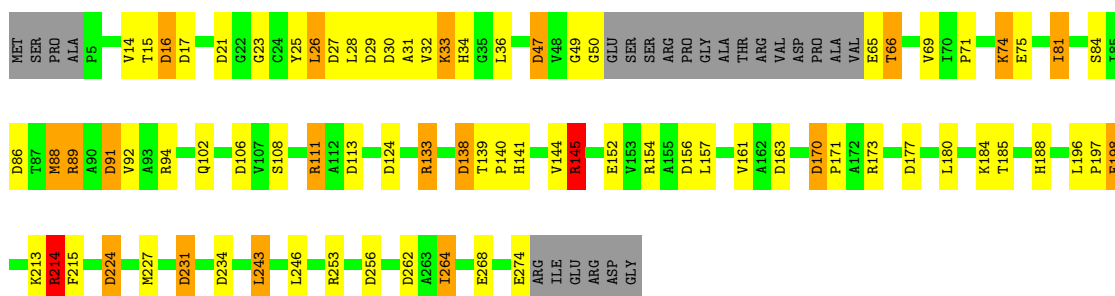
### 3 Residue-property plots [i](#)

These plots are drawn for all protein, RNA, DNA and oligosaccharide chains in the entry. The first graphic for a chain summarises the proportions of the various outlier classes displayed in the second graphic. The second graphic shows the sequence view annotated by issues in geometry. Residues are color-coded according to the number of geometric quality criteria for which they contain at least one outlier: green = 0, yellow = 1, orange = 2 and red = 3 or more. Stretches of 2 or more consecutive residues without any outlier are shown as a green connector. Residues present in the sample, but not in the model, are shown in grey.

Note EDS was not executed.

- Molecule 1: DIHYDROPTEROATE SYNTHASE I

Chain A:  63% 21% 7% 9%



## 4 Data and refinement statistics

Xtrriage (Phenix) and EDS were not executed - this section is therefore incomplete.

Property	Value	Source
Space group	P 32 2 1	Depositor
Cell constants a, b, c, $\alpha$ , $\beta$ , $\gamma$	62.90Å 62.90Å 121.40Å 90.00° 90.00° 120.00°	Depositor
Resolution (Å)	20.00 – 1.70	Depositor
% Data completeness (in resolution range)	80.5 (20.00-1.70)	Depositor
$R_{merge}$	0.04	Depositor
$R_{sym}$	(Not available)	Depositor
Refinement program	TNT	Depositor
R, $R_{free}$	0.185 , 0.243	Depositor
Estimated twinning fraction	No twinning to report.	Xtrriage
Total number of atoms	2123	wwPDB-VP
Average B, all atoms (Å <sup>2</sup> )	24.0	wwPDB-VP

## 5 Model quality [i](#)

### 5.1 Standard geometry [i](#)

Bond lengths and bond angles in the following residue types are not validated in this section: MG, PMM

The Z score for a bond length (or angle) is the number of standard deviations the observed value is removed from the expected value. A bond length (or angle) with  $|Z| > 5$  is considered an outlier worth inspection. RMSZ is the root-mean-square of all Z scores of the bond lengths (or angles).

Mol	Chain	Bond lengths		Bond angles	
		RMSZ	# Z  >5	RMSZ	# Z  >5
1	A	0.78	5/1905 (0.3%)	1.35	42/2602 (1.6%)

All (5) bond length outliers are listed below:

Mol	Chain	Res	Type	Atoms	Z	Observed(Å)	Ideal(Å)
1	A	152	GLU	CD-OE2	6.53	1.32	1.25
1	A	65	GLU	CD-OE2	6.48	1.32	1.25
1	A	268	GLU	CD-OE2	6.39	1.32	1.25
1	A	274	GLU	CD-OE2	6.04	1.32	1.25
1	A	198	GLU	CD-OE2	5.28	1.31	1.25

All (42) bond angle outliers are listed below:

Mol	Chain	Res	Type	Atoms	Z	Observed(°)	Ideal(°)
1	A	214	ARG	NE-CZ-NH1	9.16	124.88	120.30
1	A	106	ASP	CB-CG-OD2	-8.83	110.35	118.30
1	A	106	ASP	CB-CG-OD1	8.48	125.93	118.30
1	A	177	ASP	CB-CG-OD2	-7.91	111.18	118.30
1	A	256	ASP	CB-CG-OD1	7.51	125.06	118.30
1	A	156	ASP	CB-CG-OD1	7.27	124.84	118.30
1	A	170	ASP	CB-CG-OD1	7.14	124.72	118.30
1	A	224	ASP	CB-CG-OD2	-7.09	111.92	118.30
1	A	234	ASP	CB-CG-OD2	-7.05	111.95	118.30
1	A	170	ASP	CB-CG-OD2	-7.02	111.98	118.30
1	A	17	ASP	CB-CG-OD1	6.90	124.51	118.30
1	A	224	ASP	CB-CG-OD1	6.89	124.50	118.30
1	A	17	ASP	CB-CG-OD2	-6.76	112.21	118.30
1	A	163	ASP	CB-CG-OD1	6.69	124.33	118.30
1	A	145	ARG	NE-CZ-NH1	6.65	123.63	120.30
1	A	177	ASP	CB-CG-OD1	6.55	124.19	118.30

*Continued on next page...*

Continued from previous page...

Mol	Chain	Res	Type	Atoms	Z	Observed(°)	Ideal(°)
1	A	16	ASP	CB-CG-OD2	-6.55	112.41	118.30
1	A	156	ASP	CB-CG-OD2	-6.49	112.46	118.30
1	A	173	ARG	NE-CZ-NH1	6.49	123.55	120.30
1	A	253	ARG	NE-CZ-NH1	6.46	123.53	120.30
1	A	231	ASP	CB-CG-OD2	-6.38	112.56	118.30
1	A	30	ASP	CB-CG-OD2	-6.28	112.64	118.30
1	A	47	ASP	CB-CG-OD2	-6.25	112.68	118.30
1	A	256	ASP	CB-CG-OD2	-6.25	112.68	118.30
1	A	262	ASP	CB-CG-OD2	-6.04	112.87	118.30
1	A	27	ASP	CB-CG-OD1	6.03	123.72	118.30
1	A	138	ASP	CB-CG-OD2	-6.00	112.90	118.30
1	A	234	ASP	CB-CG-OD1	5.98	123.68	118.30
1	A	113	ASP	CB-CG-OD2	-5.98	112.92	118.30
1	A	124	ASP	CB-CG-OD2	-5.90	112.99	118.30
1	A	91	ASP	CB-CG-OD2	-5.70	113.17	118.30
1	A	47	ASP	CB-CG-OD1	5.62	123.36	118.30
1	A	86	ASP	CB-CG-OD1	5.54	123.28	118.30
1	A	163	ASP	CB-CG-OD2	-5.53	113.32	118.30
1	A	16	ASP	CB-CG-OD1	5.48	123.23	118.30
1	A	262	ASP	CB-CG-OD1	5.46	123.22	118.30
1	A	29	ASP	CB-CG-OD2	-5.44	113.40	118.30
1	A	27	ASP	CB-CG-OD2	-5.36	113.48	118.30
1	A	89	ARG	NE-CZ-NH1	5.34	122.97	120.30
1	A	91	ASP	CB-CG-OD1	5.29	123.06	118.30
1	A	124	ASP	CB-CG-OD1	5.17	122.96	118.30
1	A	16	ASP	N-CA-C	-5.12	97.18	111.00

There are no chirality outliers.

There are no planarity outliers.

## 5.2 Too-close contacts

In the following table, the Non-H and H(model) columns list the number of non-hydrogen atoms and hydrogen atoms in the chain respectively. The H(added) column lists the number of hydrogen atoms added and optimized by MolProbity. The Clashes column lists the number of clashes within the asymmetric unit, whereas Symm-Clashes lists symmetry-related clashes.

Mol	Chain	Non-H	H(model)	H(added)	Clashes	Symm-Clashes
1	A	1860	0	1867	56	1
2	A	1	0	0	0	0
3	A	18	0	6	1	0

Continued on next page...



*Continued from previous page...*

Mol	Chain	Non-H	H(model)	H(added)	Clashes	Symm-Clashes
4	A	244	0	0	6	0
All	All	2123	0	1873	56	1

The all-atom clashscore is defined as the number of clashes found per 1000 atoms (including hydrogen atoms). The all-atom clashscore for this structure is 15.

All (56) close contacts within the same asymmetric unit are listed below, sorted by their clash magnitude.

Atom-1	Atom-2	Interatomic distance (Å)	Clash overlap (Å)
1:A:133[A]:ARG:HH11	1:A:133[A]:ARG:HG3	1.42	0.84
1:A:185:THR:H	1:A:188:HIS:CD2	2.05	0.74
1:A:139:THR:HA	4:A:435:HOH:O	1.88	0.73
1:A:33:LYS:HZ2	1:A:33:LYS:HB3	1.55	0.72
1:A:16:ASP:HB3	1:A:26:LEU:HD22	1.72	0.71
1:A:89:ARG:HB3	1:A:91:ASP:OD1	1.91	0.70
1:A:145:ARG:HH11	1:A:145:ARG:HG3	1.55	0.70
1:A:66:THR:HG22	1:A:92:VAL:HG22	1.73	0.69
1:A:16:ASP:HB3	1:A:26:LEU:CD2	2.22	0.69
1:A:14:VAL:O	1:A:26:LEU:HD13	1.93	0.68
1:A:154:ARG:NH2	1:A:198:GLU:O	2.30	0.65
1:A:140:PRO:HD2	4:A:414:HOH:O	1.96	0.65
1:A:145:ARG:HG3	1:A:145:ARG:NH1	2.13	0.62
1:A:74:LYS:NZ	4:A:434:HOH:O	2.31	0.62
1:A:81:ILE:HD13	1:A:81:ILE:N	2.13	0.62
1:A:133[A]:ARG:HG3	1:A:133[A]:ARG:NH1	2.09	0.61
1:A:14:VAL:HG21	1:A:69:VAL:HG12	1.82	0.60
1:A:88:MET:HG2	1:A:108:SER:HB3	1.84	0.60
1:A:133[A]:ARG:O	1:A:133[A]:ARG:HG2	2.01	0.60
1:A:33:LYS:HB3	1:A:33:LYS:NZ	2.15	0.59
1:A:145:ARG:HH11	1:A:145:ARG:CG	2.16	0.58
1:A:75:GLU:HA	1:A:75:GLU:OE1	2.04	0.58
1:A:154:ARG:HD2	4:A:530:HOH:O	2.03	0.56
1:A:47:ASP:HA	1:A:84[B]:SER:OG	2.07	0.55
1:A:214:ARG:HH11	1:A:214:ARG:CG	2.21	0.54
1:A:185:THR:H	1:A:188:HIS:HD2	1.55	0.53
1:A:214:ARG:HH11	1:A:214:ARG:HG3	1.74	0.53
1:A:14:VAL:HG22	1:A:49:GLY:O	2.08	0.52
1:A:14:VAL:CG2	1:A:69:VAL:HG12	2.40	0.52
1:A:133[A]:ARG:O	1:A:144:VAL:HG21	2.11	0.51
1:A:32:VAL:O	1:A:36:LEU:HG	2.11	0.50
1:A:91:ASP:OD1	1:A:91:ASP:N	2.46	0.49

*Continued on next page...*

Continued from previous page...

Atom-1	Atom-2	Interatomic distance (Å)	Clash overlap (Å)
1:A:28:LEU:HD13	1:A:71:PRO:HB2	1.95	0.48
1:A:243:LEU:HD12	1:A:246:LEU:HD12	1.96	0.47
1:A:15:THR:HG22	1:A:50:GLY:HA2	1.98	0.46
1:A:102:GLN:NE2	4:A:458:HOH:O	2.30	0.46
1:A:47:ASP:HA	1:A:84[B]:SER:HG	1.81	0.45
1:A:224:ASP:N	1:A:224:ASP:OD1	2.48	0.45
1:A:25:TYR:O	1:A:31:ALA:HB2	2.17	0.44
1:A:21:ASP:OD2	3:A:301:PMM:O2P	2.35	0.44
1:A:111:ARG:HD2	4:A:505:HOH:O	2.17	0.44
1:A:214:ARG:HH11	1:A:227:MET:HE1	1.83	0.44
1:A:214:ARG:NH1	1:A:227:MET:CE	2.80	0.44
1:A:170:ASP:OD1	1:A:171:PRO:HD2	2.17	0.44
1:A:180:LEU:O	1:A:213:LYS:HE2	2.18	0.44
1:A:140:PRO:HG2	1:A:141:HIS:CD2	2.53	0.43
1:A:196:LEU:N	1:A:197:PRO:CD	2.81	0.43
1:A:243:LEU:HD12	1:A:243:LEU:HA	1.70	0.43
1:A:16:ASP:HB3	1:A:26:LEU:HD23	1.98	0.42
1:A:33:LYS:NZ	1:A:33:LYS:CB	2.80	0.42
1:A:25:TYR:CE1	1:A:34:HIS:CG	3.07	0.42
1:A:184:LYS:HA	1:A:188:HIS:HD2	1.84	0.42
1:A:138:ASP:N	1:A:138:ASP:OD2	2.53	0.42
1:A:157:LEU:O	1:A:161:VAL:HG23	2.20	0.42
1:A:25:TYR:HB3	1:A:31:ALA:CA	2.51	0.40

All (1) symmetry-related close contacts are listed below. The label for Atom-2 includes the symmetry operator and encoded unit-cell translations to be applied.

Atom-1	Atom-2	Interatomic distance (Å)	Clash overlap (Å)
1:A:145:ARG:NE	1:A:145:ARG:NE[6_765]	2.09	0.11

## 5.3 Torsion angles [i](#)

### 5.3.1 Protein backbone [i](#)

In the following table, the Percentiles column shows the percent Ramachandran outliers of the chain as a percentile score with respect to all X-ray entries followed by that with respect to entries of similar resolution.

The Analysed column shows the number of residues for which the backbone conformation was analysed, and the total number of residues.

Mol	Chain	Analysed	Favoured	Allowed	Outliers	Percentiles
1	A	255/280 (91%)	244 (96%)	10 (4%)	1 (0%)	34 18

All (1) Ramachandran outliers are listed below:

Mol	Chain	Res	Type
1	A	23	GLY

### 5.3.2 Protein sidechains [i](#)

In the following table, the Percentiles column shows the percent sidechain outliers of the chain as a percentile score with respect to all X-ray entries followed by that with respect to entries of similar resolution.

The Analysed column shows the number of residues for which the sidechain conformation was analysed, and the total number of residues.

Mol	Chain	Analysed	Rotameric	Outliers	Percentiles
1	A	188/204 (92%)	171 (91%)	17 (9%)	9 2

All (17) residues with a non-rotameric sidechain are listed below:

Mol	Chain	Res	Type
1	A	26	LEU
1	A	33	LYS
1	A	66	THR
1	A	74	LYS
1	A	81	ILE
1	A	88	MET
1	A	94	ARG
1	A	111	ARG
1	A	133[A]	ARG
1	A	133[B]	ARG
1	A	145	ARG
1	A	214	ARG
1	A	215	PHE
1	A	231	ASP
1	A	243	LEU
1	A	264[A]	ILE
1	A	264[B]	ILE

Sometimes sidechains can be flipped to improve hydrogen bonding and reduce clashes. All (3) such sidechains are listed below:

Mol	Chain	Res	Type
1	A	99	ASN
1	A	141	HIS
1	A	188	HIS

### 5.3.3 RNA [i](#)

There are no RNA molecules in this entry.

## 5.4 Non-standard residues in protein, DNA, RNA chains [i](#)

There are no non-standard protein/DNA/RNA residues in this entry.

## 5.5 Carbohydrates [i](#)

There are no monosaccharides in this entry.

## 5.6 Ligand geometry [i](#)

Of 2 ligands modelled in this entry, 1 is monoatomic - leaving 1 for Mogul analysis.

In the following table, the Counts columns list the number of bonds (or angles) for which Mogul statistics could be retrieved, the number of bonds (or angles) that are observed in the model and the number of bonds (or angles) that are defined in the Chemical Component Dictionary. The Link column lists molecule types, if any, to which the group is linked. The Z score for a bond length (or angle) is the number of standard deviations the observed value is removed from the expected value. A bond length (or angle) with  $|Z| > 2$  is considered an outlier worth inspection. RMSZ is the root-mean-square of all Z scores of the bond lengths (or angles).

Mol	Type	Chain	Res	Link	Bond lengths			Bond angles		
					Counts	RMSZ	# Z  > 2	Counts	RMSZ	# Z  > 2
3	PMM	A	301	2	19,19,19	3.10	4 (21%)	23,28,28	2.89	10 (43%)

In the following table, the Chirals column lists the number of chiral outliers, the number of chiral centers analysed, the number of these observed in the model and the number defined in the Chemical Component Dictionary. Similar counts are reported in the Torsion and Rings columns. '-' means no outliers of that kind were identified.

Mol	Type	Chain	Res	Link	Chirals	Torsions	Rings
3	PMM	A	301	2	-	2/6/6/6	0/2/2/2

All (4) bond length outliers are listed below:

Mol	Chain	Res	Type	Atoms	Z	Observed(Å)	Ideal(Å)
3	A	301	PMM	C7-N8	8.39	1.45	1.31
3	A	301	PMM	C7-C6	6.40	1.50	1.39
3	A	301	PMM	C4A-N5	5.88	1.41	1.33
3	A	301	PMM	O4-C4	4.41	1.35	1.24

All (10) bond angle outliers are listed below:

Mol	Chain	Res	Type	Atoms	Z	Observed(°)	Ideal(°)
3	A	301	PMM	C6-C7-N8	-8.51	114.79	123.13
3	A	301	PMM	C8A-C4A-N5	-4.66	117.05	122.33
3	A	301	PMM	N2-C2-N3	4.34	124.01	117.25
3	A	301	PMM	C4-C4A-N5	3.51	122.61	118.60
3	A	301	PMM	C2-N1-C8A	3.44	119.29	115.36
3	A	301	PMM	N1-C2-N3	-3.35	122.75	127.22
3	A	301	PMM	C6-N5-C4A	2.97	121.95	118.45
3	A	301	PMM	N2-C2-N1	-2.79	113.24	117.79
3	A	301	PMM	C4A-C8A-N1	-2.57	117.48	121.80
3	A	301	PMM	C7-C6-N5	2.43	122.44	120.85

There are no chirality outliers.

All (2) torsion outliers are listed below:

Mol	Chain	Res	Type	Atoms
3	A	301	PMM	C7-C6-C9-O10
3	A	301	PMM	N5-C6-C9-O10

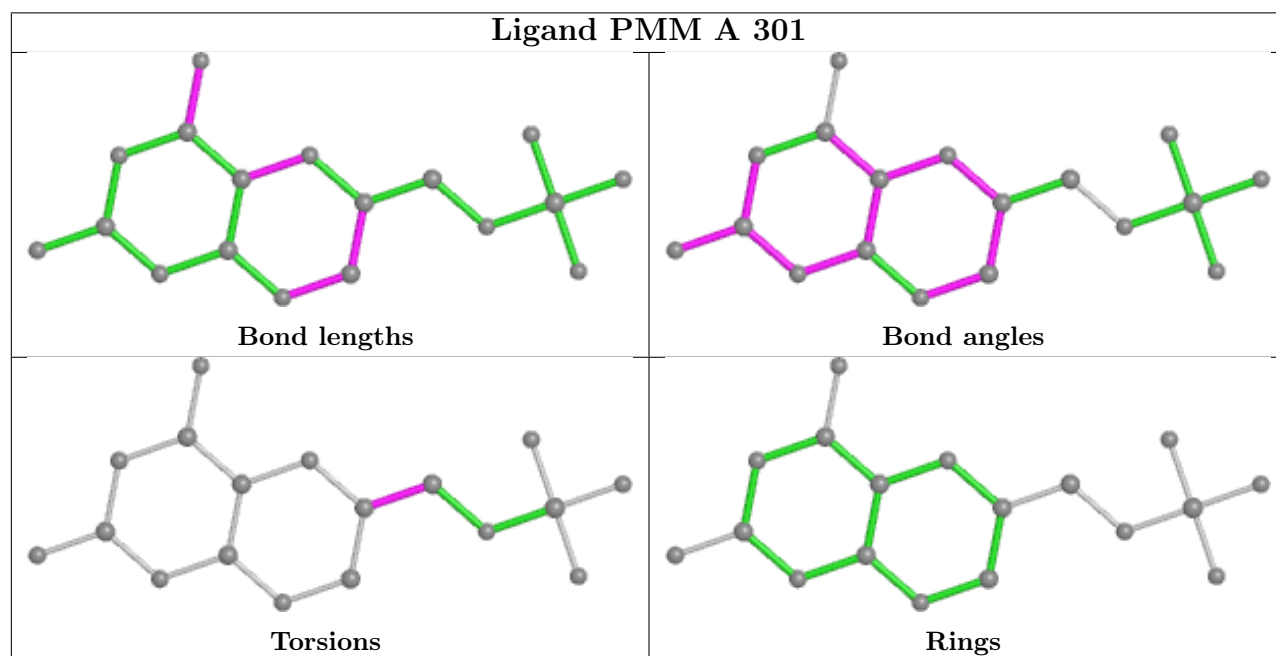
There are no ring outliers.

1 monomer is involved in 1 short contact:

Mol	Chain	Res	Type	Clashes	Symm-Clashes
3	A	301	PMM	1	0

The following is a two-dimensional graphical depiction of Mogul quality analysis of bond lengths, bond angles, torsion angles, and ring geometry for all instances of the Ligand of Interest. In addition, ligands with molecular weight > 250 and outliers as shown on the validation Tables will also be included. For torsion angles, if less than 5% of the Mogul distribution of torsion angles is within 10 degrees of the torsion angle in question, then that torsion angle is considered an outlier. Any bond that is central to one or more torsion angles identified as an outlier by Mogul will be highlighted in the graph. For rings, the root-mean-square deviation (RMSD) between the ring in question and similar rings identified by Mogul is calculated over all ring torsion angles. If the average RMSD is greater than 60 degrees and the minimal RMSD between the ring in question and any Mogul-identified rings is also greater than 60 degrees, then that ring is considered an outlier.

The outliers are highlighted in purple. The color gray indicates Mogul did not find sufficient equivalents in the CSD to analyse the geometry.



## 5.7 Other polymers [i](#)

There are no such residues in this entry.

## 5.8 Polymer linkage issues [i](#)

There are no chain breaks in this entry.

## 6 Fit of model and data [i](#)

### 6.1 Protein, DNA and RNA chains [i](#)

EDS was not executed - this section is therefore empty.

### 6.2 Non-standard residues in protein, DNA, RNA chains [i](#)

EDS was not executed - this section is therefore empty.

### 6.3 Carbohydrates [i](#)

EDS was not executed - this section is therefore empty.

### 6.4 Ligands [i](#)

EDS was not executed - this section is therefore empty.

### 6.5 Other polymers [i](#)

EDS was not executed - this section is therefore empty.