



# Full wwPDB X-ray Structure Validation Report ⓘ

Jun 11, 2024 – 07:54 PM EDT

PDB ID : 1F0Y  
Title : L-3-HYDROXYACYL-COA DEHYDROGENASE COMPLEXED WITH ACETOACETYL-COA AND NAD<sup>+</sup>  
Authors : Barycki, J.J.; O'Brien, L.K.; Strauss, A.W.; Banaszak, L.J.  
Deposited on : 2000-05-17  
Resolution : 1.80 Å(reported)

This is a Full wwPDB X-ray Structure Validation Report for a publicly released PDB entry.

We welcome your comments at [validation@mail.wwpdb.org](mailto:validation@mail.wwpdb.org)

A user guide is available at

<https://www.wwpdb.org/validation/2017/XrayValidationReportHelp>

with specific help available everywhere you see the ⓘ symbol.

The types of validation reports are described at

<http://www.wwpdb.org/validation/2017/FAQs#types>.

---

The following versions of software and data (see [references ⓘ](#)) were used in the production of this report:

MolProbity : 4.02b-467  
Mogul : 2022.3.0, CSD as543be (2022)  
Xtrriage (Phenix) : 1.20.1  
EDS : 2.36.2  
buster-report : 1.1.7 (2018)  
Percentile statistics : 20191225.v01 (using entries in the PDB archive December 25th 2019)  
Refmac : 5.8.0158  
CCP4 : 7.0.044 (Gargrove)  
Ideal geometry (proteins) : Engh & Huber (2001)  
Ideal geometry (DNA, RNA) : Parkinson et al. (1996)  
Validation Pipeline (wwPDB-VP) : 2.36.2

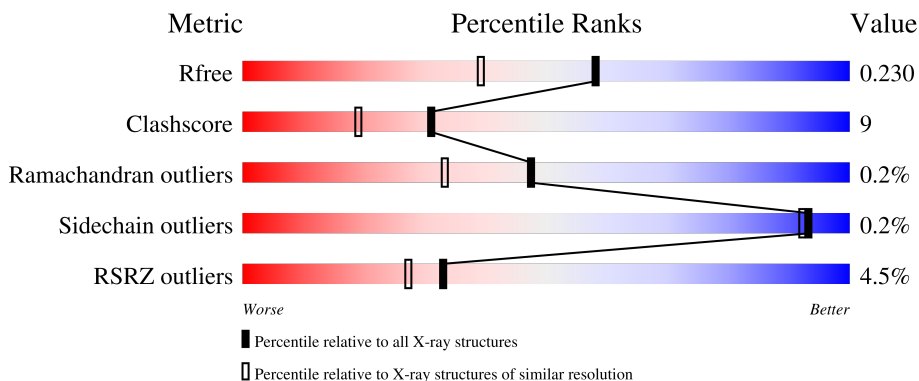
# 1 Overall quality at a glance

The following experimental techniques were used to determine the structure:

*X-RAY DIFFRACTION*

The reported resolution of this entry is 1.80 Å.

Percentile scores (ranging between 0-100) for global validation metrics of the entry are shown in the following graphic. The table shows the number of entries on which the scores are based.



Metric	Whole archive (#Entries)	Similar resolution (#Entries, resolution range(Å))
$R_{free}$	130704	5950 (1.80-1.80)
Clashscore	141614	6793 (1.80-1.80)
Ramachandran outliers	138981	6697 (1.80-1.80)
Sidechain outliers	138945	6696 (1.80-1.80)
RSRZ outliers	127900	5850 (1.80-1.80)

The table below summarises the geometric issues observed across the polymeric chains and their fit to the electron density. The red, orange, yellow and green segments of the lower bar indicate the fraction of residues that contain outliers for  $\geq 3$ , 2, 1 and 0 types of geometric quality criteria respectively. A grey segment represents the fraction of residues that are not modelled. The numeric value for each fraction is indicated below the corresponding segment, with a dot representing fractions  $\leq 5\%$ . The upper red bar (where present) indicates the fraction of residues that have poor fit to the electron density. The numeric value is given above the bar.

Mol	Chain	Length	Quality of chain
1	A	302	
1	B	302	

## 2 Entry composition [i](#)

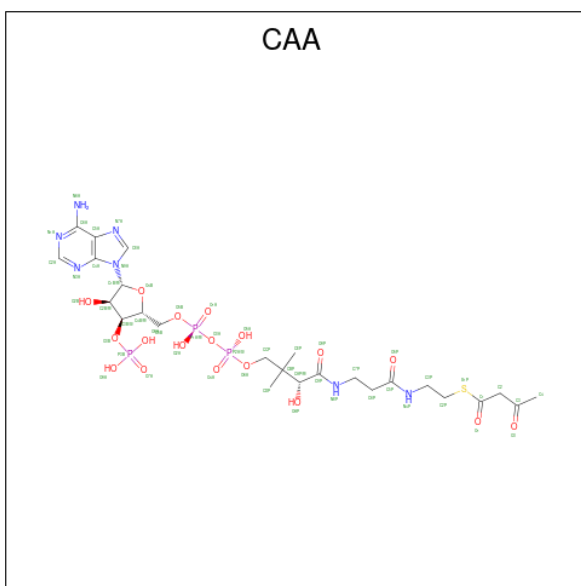
There are 4 unique types of molecules in this entry. The entry contains 5138 atoms, of which 0 are hydrogens and 0 are deuteriums.

In the tables below, the ZeroOcc column contains the number of atoms modelled with zero occupancy, the AltConf column contains the number of residues with at least one atom in alternate conformation and the Trace column contains the number of residues modelled with at most 2 atoms.

- Molecule 1 is a protein called L-3-HYDROXYACYL-COA DEHYDROGENASE.

Mol	Chain	Residues	Atoms					ZeroOcc	AltConf	Trace
			Total	C	N	O	S			
1	A	291	Total	C	N	O	S	0	0	0
			2239	1433	375	423	8			
1	B	291	Total	C	N	O	S	0	0	0
			2239	1433	375	423	8			

- Molecule 2 is ACETOACETYL-COENZYME A (three-letter code: CAA) (formula:  $C_{25}H_{40}N_7O_{18}P_3S$ ).



Mol	Chain	Residues	Atoms						ZeroOcc	AltConf
			Total	C	N	O	P	S		
2	A	1	Total	C	N	O	P	S	0	0
			54	25	7	18	3	1		
2	B	1	Total	C	N	O	P	S	0	0
			54	25	7	18	3	1		

- Molecule 3 is NICOTINAMIDE-ADENINE-DINUCLEOTIDE (three-letter code: NAD) (formula:  $C_{21}H_{27}N_7O_{14}P_2$ ).



Mol	Chain	Residues	Atoms				ZeroOcc	AltConf	
			Total	C	N	O			P
3	A	1	44	21	7	14	2	0	0
3	B	1	44	21	7	14	2	0	0

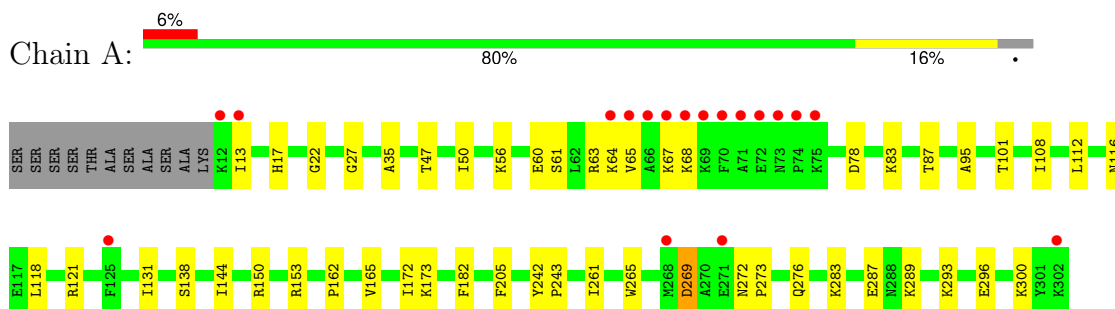
- Molecule 4 is water.

Mol	Chain	Residues	Atoms		ZeroOcc	AltConf
			Total	O		
4	A	202	202	202	0	0
4	B	262	262	262	0	0

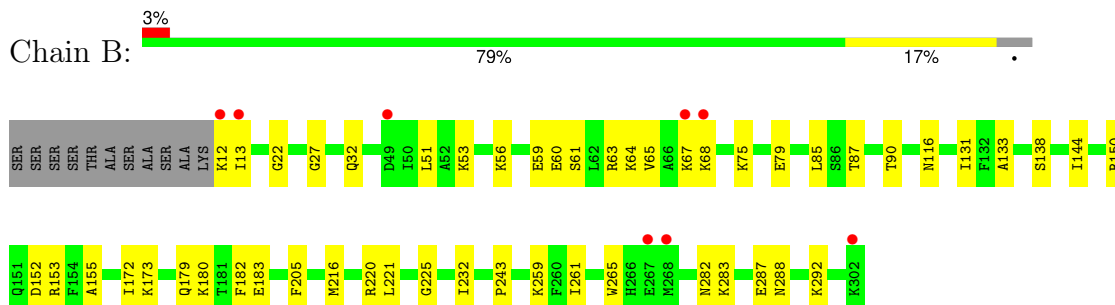
### 3 Residue-property plots

These plots are drawn for all protein, RNA, DNA and oligosaccharide chains in the entry. The first graphic for a chain summarises the proportions of the various outlier classes displayed in the second graphic. The second graphic shows the sequence view annotated by issues in geometry and electron density. Residues are color-coded according to the number of geometric quality criteria for which they contain at least one outlier: green = 0, yellow = 1, orange = 2 and red = 3 or more. A red dot above a residue indicates a poor fit to the electron density ( $RSRZ > 2$ ). Stretches of 2 or more consecutive residues without any outlier are shown as a green connector. Residues present in the sample, but not in the model, are shown in grey.

- Molecule 1: L-3-HYDROXYACYL-COA DEHYDROGENASE



- Molecule 1: L-3-HYDROXYACYL-COA DEHYDROGENASE



## 4 Data and refinement statistics

Property	Value	Source
Space group	P 21 21 21	Depositor
Cell constants a, b, c, $\alpha$ , $\beta$ , $\gamma$	50.49Å 87.97Å 159.00Å 90.00° 90.00° 90.00°	Depositor
Resolution (Å)	30.00 – 1.80 29.49 – 1.80	Depositor EDS
% Data completeness (in resolution range)	91.4 (30.00-1.80) 91.6 (29.49-1.80)	Depositor EDS
$R_{merge}$	0.06	Depositor
$R_{sym}$	(Not available)	Depositor
$\langle I/\sigma(I) \rangle$ <sup>1</sup>	2.88 (at 1.80Å)	Xtrriage
Refinement program	CNS 0.3	Depositor
R, $R_{free}$	0.210 , 0.239 0.200 , 0.230	Depositor DCC
$R_{free}$ test set	3078 reflections (5.05%)	wwPDB-VP
Wilson B-factor (Å <sup>2</sup> )	18.4	Xtrriage
Anisotropy	0.228	Xtrriage
Bulk solvent $k_{sol}$ (e/Å <sup>3</sup> ), $B_{sol}$ (Å <sup>2</sup> )	0.35 , 45.3	EDS
L-test for twinning <sup>2</sup>	$\langle  L  \rangle = 0.42$ , $\langle L^2 \rangle = 0.25$	Xtrriage
Estimated twinning fraction	No twinning to report.	Xtrriage
$F_o, F_c$ correlation	0.94	EDS
Total number of atoms	5138	wwPDB-VP
Average B, all atoms (Å <sup>2</sup> )	21.0	wwPDB-VP

Xtrriage's analysis on translational NCS is as follows: *The largest off-origin peak in the Patterson function is 7.24% of the height of the origin peak. No significant pseudotranslation is detected.*

<sup>1</sup>Intensities estimated from amplitudes.

<sup>2</sup>Theoretical values of  $\langle |L| \rangle$ ,  $\langle L^2 \rangle$  for acentric reflections are 0.5, 0.333 respectively for untwinned datasets, and 0.375, 0.2 for perfectly twinned datasets.

## 5 Model quality

### 5.1 Standard geometry

Bond lengths and bond angles in the following residue types are not validated in this section: CAA, NAD

The Z score for a bond length (or angle) is the number of standard deviations the observed value is removed from the expected value. A bond length (or angle) with  $|Z| > 5$  is considered an outlier worth inspection. RMSZ is the root-mean-square of all Z scores of the bond lengths (or angles).

Mol	Chain	Bond lengths		Bond angles	
		RMSZ	# Z  >5	RMSZ	# Z  >5
1	A	0.33	0/2281	0.61	0/3080
1	B	0.33	0/2281	0.63	0/3080
All	All	0.33	0/4562	0.62	0/6160

There are no bond length outliers.

There are no bond angle outliers.

There are no chirality outliers.

There are no planarity outliers.

### 5.2 Too-close contacts

In the following table, the Non-H and H(model) columns list the number of non-hydrogen atoms and hydrogen atoms in the chain respectively. The H(added) column lists the number of hydrogen atoms added and optimized by MolProbity. The Clashes column lists the number of clashes within the asymmetric unit, whereas Symm-Clashes lists symmetry-related clashes.

Mol	Chain	Non-H	H(model)	H(added)	Clashes	Symm-Clashes
1	A	2239	0	2289	39	0
1	B	2239	0	2289	46	0
2	A	54	0	36	1	0
2	B	54	0	36	3	0
3	A	44	0	26	0	0
3	B	44	0	26	0	0
4	A	202	0	0	2	0
4	B	262	0	0	8	0
All	All	5138	0	4702	85	0

The all-atom clashscore is defined as the number of clashes found per 1000 atoms (including hydrogen atoms). The all-atom clashscore for this structure is 9.

All (85) close contacts within the same asymmetric unit are listed below, sorted by their clash magnitude.

Atom-1	Atom-2	Interatomic distance (Å)	Clash overlap (Å)
1:A:95:ALA:HB2	1:A:121:ARG:HH12	1.26	1.00
1:B:12:LYS:N	1:B:180:LYS:HE2	1.89	0.88
1:A:173:LYS:HE3	1:A:182:PHE:HB2	1.66	0.78
1:B:63:ARG:O	1:B:67:LYS:HG2	1.85	0.76
1:B:59:GLU:HG3	1:B:85:LEU:HD11	1.68	0.76
1:A:173:LYS:HE3	1:A:182:PHE:CB	2.17	0.74
1:B:288:ASN:HB3	4:B:1227:HOH:O	1.96	0.66
1:B:259:LYS:HE2	1:B:282:ASN:OD1	1.95	0.65
1:B:56:LYS:O	1:B:60:GLU:HG3	1.96	0.65
1:B:283:LYS:O	1:B:287:GLU:HG3	1.96	0.65
1:A:61:SER:O	1:A:65:VAL:HG23	1.99	0.62
1:B:292:LYS:HD2	4:B:1056:HOH:O	1.99	0.60
1:A:150:ARG:HG2	1:A:153:ARG:HB2	1.84	0.59
1:A:63:ARG:O	1:A:67:LYS:HG2	2.03	0.58
1:A:173:LYS:HE3	1:A:182:PHE:CG	2.39	0.58
1:A:95:ALA:HB2	1:A:121:ARG:NH1	2.08	0.57
1:B:22:GLY:O	1:B:27:GLY:HA3	2.04	0.56
1:A:269:ASP:OD2	1:A:272:ASN:HB2	2.07	0.54
1:A:296:GLU:HG3	1:A:300:LYS:HG2	1.91	0.53
1:B:172:ILE:HG12	1:B:205:PHE:CD1	2.43	0.53
1:B:68:LYS:HZ3	2:B:751:CAA:H3B	1.74	0.53
1:A:112:LEU:HG	1:A:116:ASN:HD21	1.74	0.52
1:B:259:LYS:HE3	4:B:873:HOH:O	2.10	0.52
1:A:293:LYS:HE3	4:A:879:HOH:O	2.09	0.52
1:A:17:HIS:HD2	1:A:101:THR:OG1	1.93	0.51
1:A:273:PRO:HA	1:A:276:GLN:HG2	1.91	0.51
1:A:35:ALA:HB1	1:A:87:THR:OG1	2.11	0.51
1:B:221:LEU:HD22	1:B:232:ILE:HD11	1.93	0.51
1:A:172:ILE:HD12	1:A:172:ILE:N	2.26	0.50
1:B:150:ARG:HG2	1:B:150:ARG:O	2.12	0.50
1:A:13:ILE:HD11	1:A:131:ILE:CD1	2.42	0.50
1:B:173:LYS:HD3	1:B:182:PHE:CG	2.47	0.49
1:B:152:ASP:OD2	1:B:153:ARG:CD	2.61	0.49
1:A:22:GLY:O	1:A:27:GLY:HA3	2.13	0.49
1:B:68:LYS:NZ	2:B:751:CAA:H3B	2.28	0.48
1:A:283:LYS:O	1:A:287:GLU:HG3	2.13	0.48
1:B:180:LYS:HG2	4:B:1247:HOH:O	2.13	0.48
1:B:13:ILE:HD11	1:B:131:ILE:CD1	2.43	0.48
1:A:112:LEU:HG	1:A:116:ASN:ND2	2.29	0.48
1:B:225:GLY:HA2	4:B:1203:HOH:O	2.13	0.47

*Continued on next page...*



*Continued from previous page...*

Atom-1	Atom-2	Interatomic distance (Å)	Clash overlap (Å)
1:A:47:THR:OG1	1:A:50:ILE:HG13	2.14	0.47
1:B:63:ARG:HH11	1:B:63:ARG:HG2	1.79	0.47
1:B:116:ASN:HD21	1:B:144:ILE:HA	1.79	0.47
1:A:162:PRO:HG2	1:A:165:VAL:HB	1.97	0.47
1:B:216:MET:O	1:B:220:ARG:HG3	2.14	0.47
1:A:116:ASN:OD1	1:A:144:ILE:HA	2.15	0.47
1:B:172:ILE:HG12	1:B:205:PHE:CE1	2.50	0.47
1:B:179:GLN:O	1:B:183:GLU:HG3	2.14	0.47
1:B:152:ASP:OD2	1:B:153:ARG:HD2	2.16	0.46
1:B:116:ASN:ND2	1:B:144:ILE:HA	2.31	0.46
1:A:108:ILE:HD13	1:A:118:LEU:HD22	1.98	0.46
1:A:68:LYS:NZ	2:A:351:CAA:H3B	2.31	0.46
1:A:172:ILE:HG12	1:A:205:PHE:CD1	2.52	0.45
1:A:172:ILE:HG12	1:A:205:PHE:CE1	2.52	0.44
1:A:289:LYS:HD3	1:A:296:GLU:OE2	2.17	0.44
1:A:138:SER:HB3	1:A:261:ILE:HG23	1.99	0.44
1:A:138:SER:HB2	1:A:265:TRP:NE1	2.32	0.43
1:B:87:THR:O	1:B:87:THR:HG22	2.19	0.43
1:B:60:GLU:O	1:B:64:LYS:HG3	2.19	0.43
1:B:53:LYS:HD3	4:B:1201:HOH:O	2.18	0.43
1:B:179:GLN:HE21	1:B:183:GLU:CG	2.32	0.43
1:B:13:ILE:HG12	4:B:1247:HOH:O	2.18	0.43
1:A:138:SER:CB	1:A:261:ILE:HG23	2.50	0.42
1:A:293:LYS:HG3	4:A:1217:HOH:O	2.18	0.42
1:B:138:SER:HB2	1:B:265:TRP:NE1	2.35	0.42
1:B:243:PRO:HD2	4:B:826:HOH:O	2.19	0.42
1:B:32:GLN:HE22	1:B:61:SER:HB3	1.84	0.42
1:B:63:ARG:HG2	1:B:63:ARG:NH1	2.34	0.41
1:A:56:LYS:O	1:A:60:GLU:OE1	2.37	0.41
1:B:133:ALA:HA	1:B:155:ALA:O	2.20	0.41
1:B:61:SER:O	1:B:65:VAL:HG23	2.20	0.41
1:B:68:LYS:HZ2	2:B:751:CAA:H2B	1.85	0.41
1:A:60:GLU:O	1:A:64:LYS:HG3	2.20	0.41
1:B:152:ASP:CG	1:B:153:ARG:HD3	2.41	0.41
1:A:13:ILE:HD11	1:A:131:ILE:HD12	2.02	0.41
1:A:83:LYS:O	1:A:87:THR:HG23	2.20	0.41
1:B:51:LEU:HD13	1:B:90:THR:HB	2.02	0.41
1:B:152:ASP:OD2	1:B:153:ARG:HD3	2.21	0.41
1:B:138:SER:HB3	1:B:261:ILE:HG23	2.03	0.41
1:B:150:ARG:HG3	1:B:153:ARG:CZ	2.51	0.41
1:B:75:LYS:O	1:B:79:GLU:HG3	2.20	0.40

*Continued on next page...*

Continued from previous page...

Atom-1	Atom-2	Interatomic distance (Å)	Clash overlap (Å)
1:A:242:TYR:HA	1:A:243:PRO:HD3	1.90	0.40
1:A:150:ARG:HG2	1:A:150:ARG:O	2.21	0.40
1:A:173:LYS:CE	1:A:182:PHE:HB2	2.44	0.40
1:B:221:LEU:O	1:B:221:LEU:HD23	2.21	0.40

There are no symmetry-related clashes.

## 5.3 Torsion angles [i](#)

### 5.3.1 Protein backbone [i](#)

In the following table, the Percentiles column shows the percent Ramachandran outliers of the chain as a percentile score with respect to all X-ray entries followed by that with respect to entries of similar resolution.

The Analysed column shows the number of residues for which the backbone conformation was analysed, and the total number of residues.

Mol	Chain	Analysed	Favoured	Allowed	Outliers	Percentiles	
1	A	289/302 (96%)	280 (97%)	8 (3%)	1 (0%)	41	27
1	B	289/302 (96%)	279 (96%)	10 (4%)	0	100	100
All	All	578/604 (96%)	559 (97%)	18 (3%)	1 (0%)	47	33

All (1) Ramachandran outliers are listed below:

Mol	Chain	Res	Type
1	A	269	ASP

### 5.3.2 Protein sidechains [i](#)

In the following table, the Percentiles column shows the percent sidechain outliers of the chain as a percentile score with respect to all X-ray entries followed by that with respect to entries of similar resolution.

The Analysed column shows the number of residues for which the sidechain conformation was analysed, and the total number of residues.

Mol	Chain	Analysed	Rotameric	Outliers	Percentiles	
1	A	244/253 (96%)	243 (100%)	1 (0%)	91	89

Continued on next page...

*Continued from previous page...*

Mol	Chain	Analysed	Rotameric	Outliers	Percentiles	
1	B	244/253 (96%)	244 (100%)	0	100	100
All	All	488/506 (96%)	487 (100%)	1 (0%)	93	92

All (1) residues with a non-rotameric sidechain are listed below:

Mol	Chain	Res	Type
1	A	78	ASP

Sometimes sidechains can be flipped to improve hydrogen bonding and reduce clashes. All (4) such sidechains are listed below:

Mol	Chain	Res	Type
1	A	17	HIS
1	B	32	GLN
1	B	116	ASN
1	B	179	GLN

### 5.3.3 RNA [i](#)

There are no RNA molecules in this entry.

## 5.4 Non-standard residues in protein, DNA, RNA chains [i](#)

There are no non-standard protein/DNA/RNA residues in this entry.

## 5.5 Carbohydrates [i](#)

There are no monosaccharides in this entry.

## 5.6 Ligand geometry [i](#)

4 ligands are modelled in this entry.

In the following table, the Counts columns list the number of bonds (or angles) for which Mogul statistics could be retrieved, the number of bonds (or angles) that are observed in the model and the number of bonds (or angles) that are defined in the Chemical Component Dictionary. The Link column lists molecule types, if any, to which the group is linked. The Z score for a bond length (or angle) is the number of standard deviations the observed value is removed from the

expected value. A bond length (or angle) with  $|Z| > 2$  is considered an outlier worth inspection. RMSZ is the root-mean-square of all Z scores of the bond lengths (or angles).

Mol	Type	Chain	Res	Link	Bond lengths			Bond angles		
					Counts	RMSZ	# Z  > 2	Counts	RMSZ	# Z  > 2
2	CAA	A	351	-	49,56,56	2.01	14 (28%)	64,83,83	1.85	13 (20%)
2	CAA	B	751	-	49,56,56	2.01	12 (24%)	64,83,83	1.86	11 (17%)
3	NAD	B	750	-	42,48,48	2.44	10 (23%)	50,73,73	1.69	13 (26%)
3	NAD	A	350	-	42,48,48	2.40	11 (26%)	50,73,73	1.71	16 (32%)

In the following table, the Chirals column lists the number of chiral outliers, the number of chiral centers analysed, the number of these observed in the model and the number defined in the Chemical Component Dictionary. Similar counts are reported in the Torsion and Rings columns. '-' means no outliers of that kind were identified.

Mol	Type	Chain	Res	Link	Chirals	Torsions	Rings
2	CAA	A	351	-	-	13/51/71/71	0/3/3/3
2	CAA	B	751	-	-	12/51/71/71	0/3/3/3
3	NAD	B	750	-	-	8/26/62/62	0/5/5/5
3	NAD	A	350	-	-	10/26/62/62	0/5/5/5

All (47) bond length outliers are listed below:

Mol	Chain	Res	Type	Atoms	Z	Observed(Å)	Ideal(Å)
3	B	750	NAD	C4N-C3N	7.60	1.50	1.39
3	A	350	NAD	C4N-C3N	7.59	1.50	1.39
2	B	751	CAA	C2A-N3A	6.39	1.42	1.32
2	A	351	CAA	C2A-N3A	6.33	1.41	1.32
3	B	750	NAD	C2N-C3N	6.24	1.48	1.39
3	B	750	NAD	C5N-C4N	6.23	1.49	1.38
3	A	350	NAD	C5N-C4N	6.01	1.49	1.38
3	A	350	NAD	C2N-C3N	5.95	1.48	1.39
3	A	350	NAD	C2N-N1N	5.31	1.40	1.35
2	B	751	CAA	C4A-N3A	4.93	1.42	1.35
2	A	351	CAA	C4A-N3A	4.91	1.42	1.35
3	B	750	NAD	C2N-N1N	4.86	1.40	1.35
2	B	751	CAA	C2A-N1A	4.70	1.42	1.33
2	A	351	CAA	C2A-N1A	4.62	1.42	1.33
3	A	350	NAD	PA-O3	-4.40	1.54	1.59
3	B	750	NAD	PA-O3	-4.38	1.54	1.59
3	B	750	NAD	PN-O3	4.24	1.64	1.59
3	A	350	NAD	PN-O3	3.76	1.63	1.59
3	B	750	NAD	C6N-N1N	3.57	1.43	1.35
2	B	751	CAA	C9P-N8P	3.44	1.41	1.33
2	A	351	CAA	C8A-N7A	3.44	1.41	1.34

Continued on next page...

Continued from previous page...

Mol	Chain	Res	Type	Atoms	Z	Observed(Å)	Ideal(Å)
2	A	351	CAA	C5P-N4P	3.40	1.41	1.33
2	B	751	CAA	C8A-N7A	3.37	1.40	1.34
3	A	350	NAD	C6N-N1N	3.26	1.42	1.35
2	A	351	CAA	C9P-N8P	3.21	1.41	1.33
2	B	751	CAA	C5P-N4P	3.19	1.40	1.33
3	B	750	NAD	C5B-C4B	-3.05	1.42	1.51
3	A	350	NAD	C6N-C5N	-3.03	1.32	1.38
3	A	350	NAD	C5B-C4B	-2.98	1.42	1.51
3	B	750	NAD	C6N-C5N	-2.96	1.32	1.38
2	B	751	CAA	O4B-C1B	2.71	1.44	1.40
2	A	351	CAA	O4B-C1B	2.65	1.44	1.40
2	A	351	CAA	C6A-N6A	2.64	1.43	1.34
2	B	751	CAA	C6A-N6A	2.61	1.43	1.34
2	A	351	CAA	C7P-N8P	-2.48	1.40	1.46
2	B	751	CAA	C7P-N8P	-2.41	1.40	1.46
3	B	750	NAD	C2A-N1A	2.38	1.38	1.33
2	B	751	CAA	C3P-N4P	-2.34	1.40	1.46
2	A	351	CAA	C1-S1P	2.31	1.81	1.76
2	B	751	CAA	C1-S1P	2.28	1.81	1.76
3	A	350	NAD	C3N-C7N	-2.26	1.47	1.50
2	A	351	CAA	P2A-O3A	-2.24	1.57	1.59
3	A	350	NAD	C2A-N1A	2.23	1.37	1.33
2	A	351	CAA	C3P-N4P	-2.20	1.41	1.46
2	A	351	CAA	O1-C1	2.11	1.24	1.21
2	A	351	CAA	C1B-N9A	-2.09	1.44	1.49
2	B	751	CAA	C1B-N9A	-2.07	1.44	1.49

All (53) bond angle outliers are listed below:

Mol	Chain	Res	Type	Atoms	Z	Observed(°)	Ideal(°)
2	B	751	CAA	N3A-C2A-N1A	-8.93	116.55	128.67
2	A	351	CAA	N3A-C2A-N1A	-8.86	116.64	128.67
2	B	751	CAA	O4B-C1B-N9A	5.11	115.53	108.75
2	A	351	CAA	O4B-C1B-N9A	4.67	114.94	108.75
3	B	750	NAD	C3N-C7N-N7N	4.44	123.21	117.74
3	A	350	NAD	C3N-C7N-N7N	4.25	122.97	117.74
3	B	750	NAD	O4D-C4D-C5D	-3.77	97.25	109.33
2	A	351	CAA	C2-C1-S1P	3.72	118.36	113.63
2	B	751	CAA	C2-C1-S1P	3.66	118.28	113.63
3	A	350	NAD	O4D-C4D-C5D	-3.56	97.94	109.33
2	A	351	CAA	O3A-P1A-O1A	-3.39	100.52	110.70
2	B	751	CAA	O3A-P1A-O1A	-3.25	100.92	110.70

Continued on next page...

*Continued from previous page...*

Mol	Chain	Res	Type	Atoms	Z	Observed(°)	Ideal(°)
3	B	750	NAD	C4D-O4D-C1D	3.24	112.89	109.92
3	A	350	NAD	C6N-N1N-C1D	-3.18	113.49	119.73
3	B	750	NAD	O3-PN-O1N	-3.16	101.21	110.70
3	B	750	NAD	C2N-C3N-C4N	-3.14	114.61	118.26
3	A	350	NAD	O3-PN-O1N	-3.00	101.69	110.70
2	B	751	CAA	O2A-P1A-O3A	-2.88	99.49	107.27
3	A	350	NAD	C5N-C4N-C3N	-2.85	117.56	120.36
3	A	350	NAD	C5A-C6A-N6A	2.83	124.62	120.31
2	B	751	CAA	O2A-P1A-O5B	2.66	119.61	107.57
2	A	351	CAA	P3B-O3B-C3B	-2.63	116.41	123.43
2	A	351	CAA	O3B-C3B-C2B	2.62	121.08	111.68
2	A	351	CAA	O2A-P1A-O5B	2.62	119.45	107.57
3	A	350	NAD	O2N-PN-O5D	2.57	119.20	107.57
3	B	750	NAD	C5N-C4N-C3N	-2.56	117.85	120.36
3	B	750	NAD	C4A-C5A-N7A	2.55	112.03	109.34
2	B	751	CAA	P3B-O3B-C3B	-2.50	116.75	123.43
3	A	350	NAD	C5D-C4D-C3D	2.50	124.20	115.21
3	B	750	NAD	C5D-C4D-C3D	2.48	124.12	115.21
3	A	350	NAD	C4D-O4D-C1D	2.46	112.17	109.92
2	A	351	CAA	C5B-C4B-C3B	-2.45	106.22	114.38
3	B	750	NAD	C5A-C6A-N6A	2.45	124.04	120.31
3	A	350	NAD	C4A-C5A-N7A	2.44	111.92	109.34
3	B	750	NAD	C6N-N1N-C1D	-2.43	114.95	119.73
2	B	751	CAA	O3B-C3B-C2B	2.41	120.31	111.68
3	B	750	NAD	O2N-PN-O5D	2.39	118.39	107.57
3	A	350	NAD	C2N-N1N-C1D	2.34	124.31	119.13
2	A	351	CAA	O2A-P1A-O3A	-2.31	101.04	107.27
2	B	751	CAA	C5B-C4B-C3B	-2.21	107.02	114.38
3	A	350	NAD	C2N-C3N-C4N	-2.21	115.69	118.26
2	A	351	CAA	O1-C1-S1P	-2.20	119.88	122.68
3	A	350	NAD	C4B-O4B-C1B	-2.19	107.92	109.92
3	A	350	NAD	O3-PA-O1A	-2.13	104.29	110.70
2	B	751	CAA	C2P-S1P-C1	2.12	108.10	101.84
2	A	351	CAA	O4B-C4B-C3B	2.10	109.34	104.92
3	A	350	NAD	O7N-C7N-C3N	-2.09	117.04	119.60
3	A	350	NAD	N3A-C2A-N1A	-2.07	125.86	128.67
3	B	750	NAD	O7N-C7N-N7N	-2.05	119.65	122.62
2	B	751	CAA	C3B-C2B-C1B	2.03	104.36	99.89
3	B	750	NAD	O7N-C7N-C3N	-2.01	117.14	119.60
2	A	351	CAA	C2P-S1P-C1	2.01	107.77	101.84
2	A	351	CAA	C3B-C2B-C1B	2.00	104.29	99.89

There are no chirality outliers.

All (43) torsion outliers are listed below:

Mol	Chain	Res	Type	Atoms
2	A	351	CAA	CDP-CBP-CCP-O6A
2	A	351	CAA	CEP-CBP-CCP-O6A
2	A	351	CAA	CAP-CBP-CCP-O6A
2	A	351	CAA	C1-C2-C3-O3
2	B	751	CAA	O4B-C4B-C5B-O5B
2	B	751	CAA	CCP-O6A-P2A-O4A
2	B	751	CAA	CEP-CBP-CCP-O6A
2	B	751	CAA	C1-C2-C3-O3
3	A	350	NAD	C5D-O5D-PN-O3
3	A	350	NAD	C5D-O5D-PN-O2N
3	A	350	NAD	O4D-C1D-N1N-C2N
3	A	350	NAD	O4D-C1D-N1N-C6N
3	A	350	NAD	C2D-C1D-N1N-C2N
3	A	350	NAD	C2D-C1D-N1N-C6N
3	B	750	NAD	C5D-O5D-PN-O3
3	B	750	NAD	C5D-O5D-PN-O2N
3	B	750	NAD	O4D-C1D-N1N-C2N
3	B	750	NAD	O4D-C1D-N1N-C6N
3	B	750	NAD	C2D-C1D-N1N-C2N
3	B	750	NAD	C2D-C1D-N1N-C6N
2	A	351	CAA	O4B-C4B-C5B-O5B
2	B	751	CAA	C3B-C4B-C5B-O5B
2	A	351	CAA	C3B-C4B-C5B-O5B
2	A	351	CAA	C1-C2-C3-C4
2	B	751	CAA	C1-C2-C3-C4
2	B	751	CAA	P1A-O3A-P2A-O4A
2	B	751	CAA	C4B-C3B-O3B-P3B
3	A	350	NAD	C3D-C4D-C5D-O5D
3	B	750	NAD	C3D-C4D-C5D-O5D
2	B	751	CAA	CDP-CBP-CCP-O6A
2	B	751	CAA	CAP-CBP-CCP-O6A
2	A	351	CAA	CCP-O6A-P2A-O3A
2	A	351	CAA	CCP-O6A-P2A-O4A
2	A	351	CAA	CCP-O6A-P2A-O5A
3	A	350	NAD	C5D-O5D-PN-O1N
3	B	750	NAD	C5D-O5D-PN-O1N
2	A	351	CAA	P1A-O3A-P2A-O4A
2	B	751	CAA	C3B-O3B-P3B-O8A
2	A	351	CAA	C4B-C3B-O3B-P3B
2	A	351	CAA	P1A-O3A-P2A-O5A
2	B	751	CAA	P1A-O3A-P2A-O5A
3	A	350	NAD	PA-O3-PN-O2N

*Continued on next page...*



*Continued from previous page...*

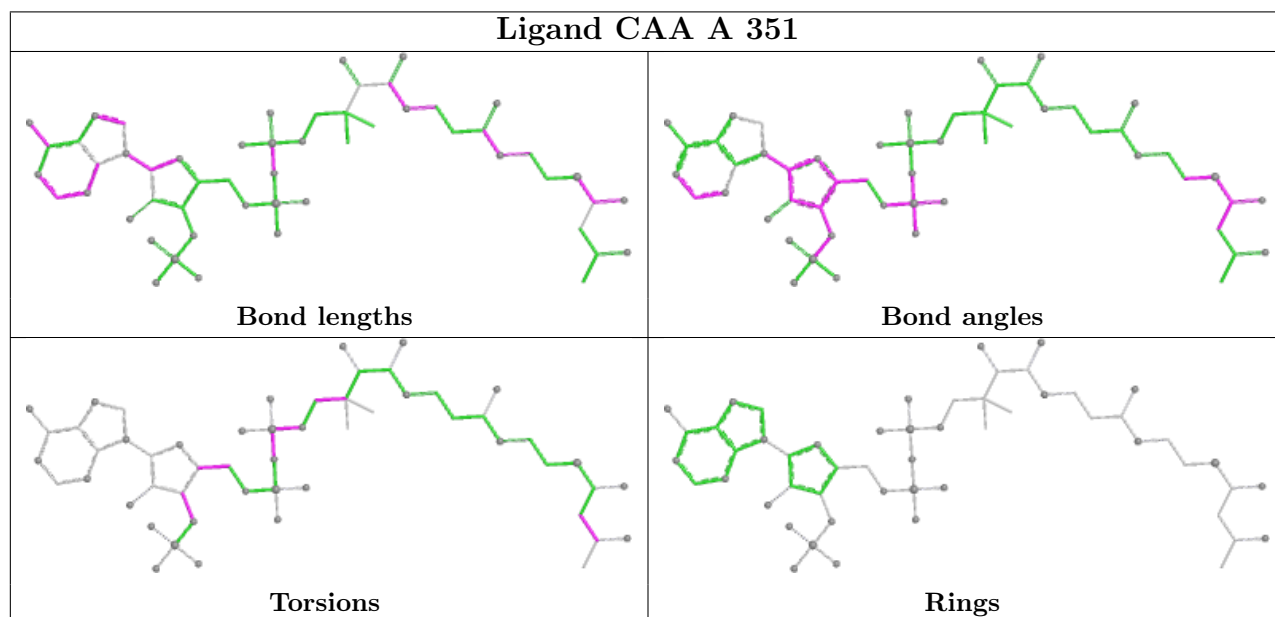
Mol	Chain	Res	Type	Atoms
3	A	350	NAD	O4D-C4D-C5D-O5D

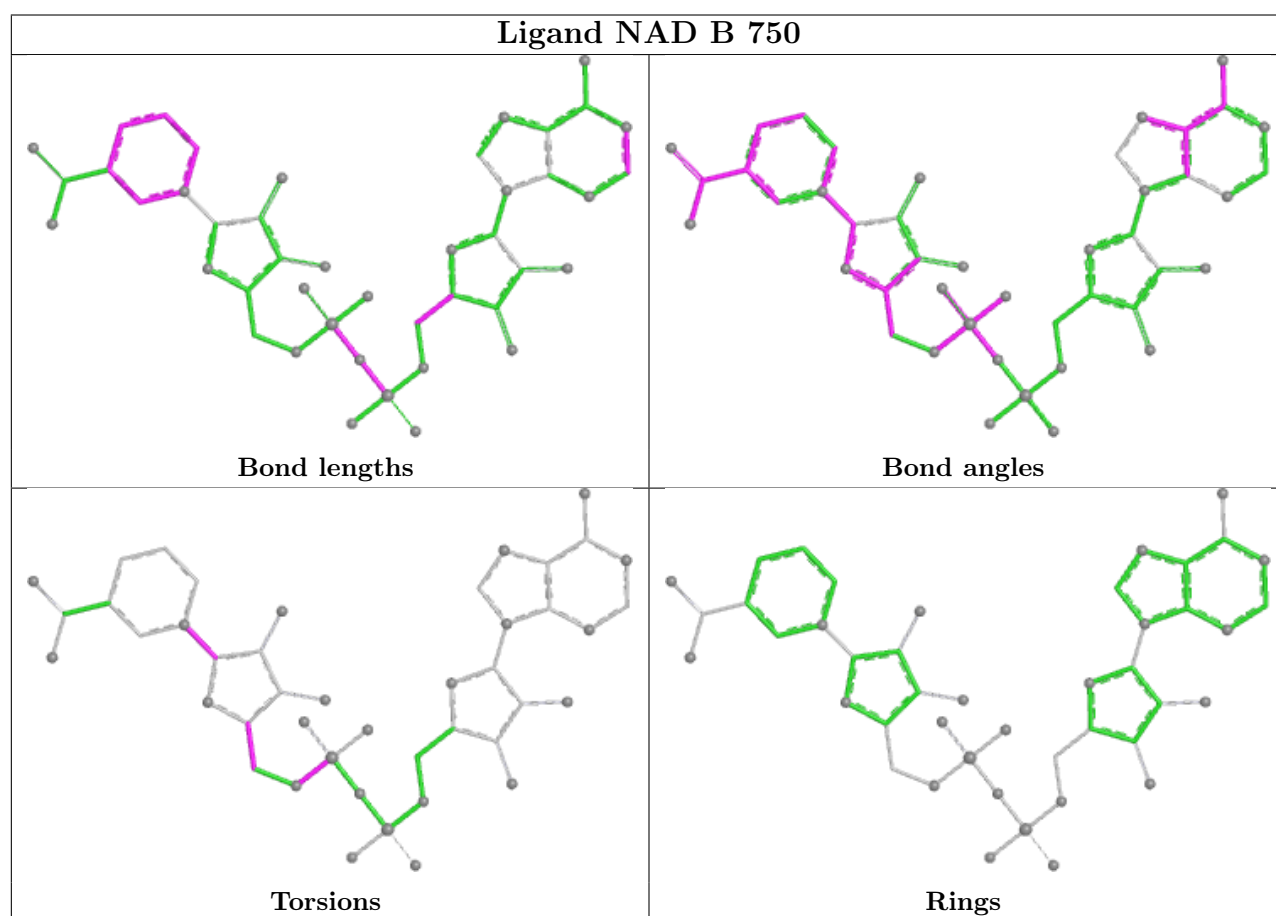
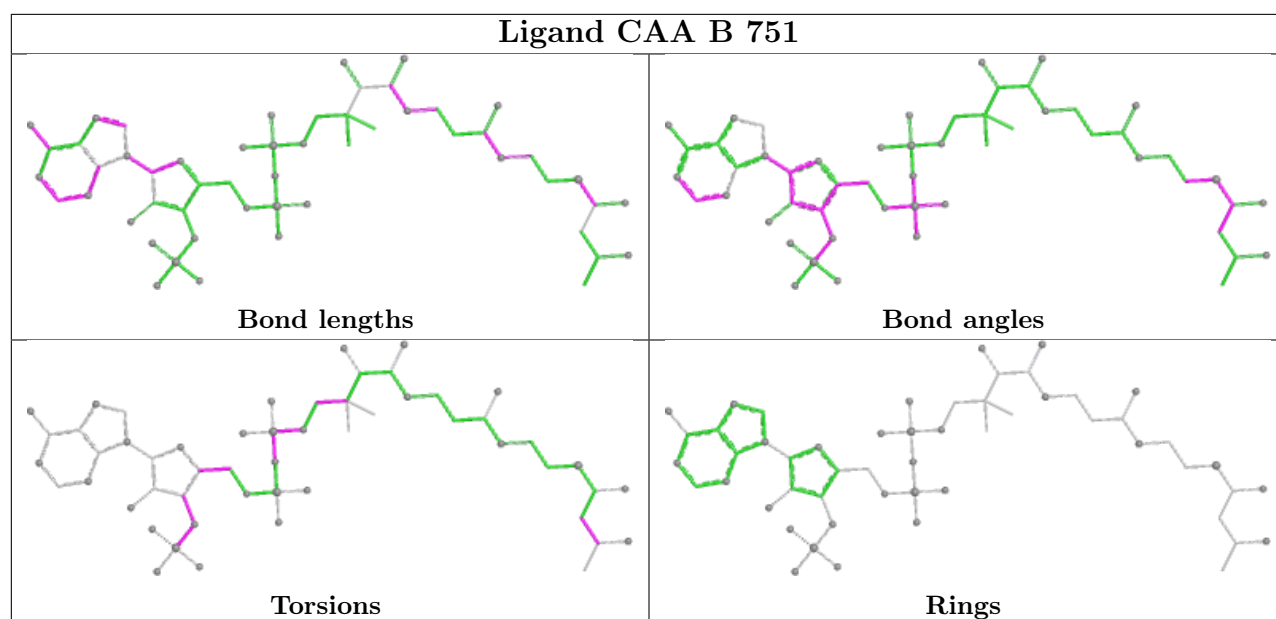
There are no ring outliers.

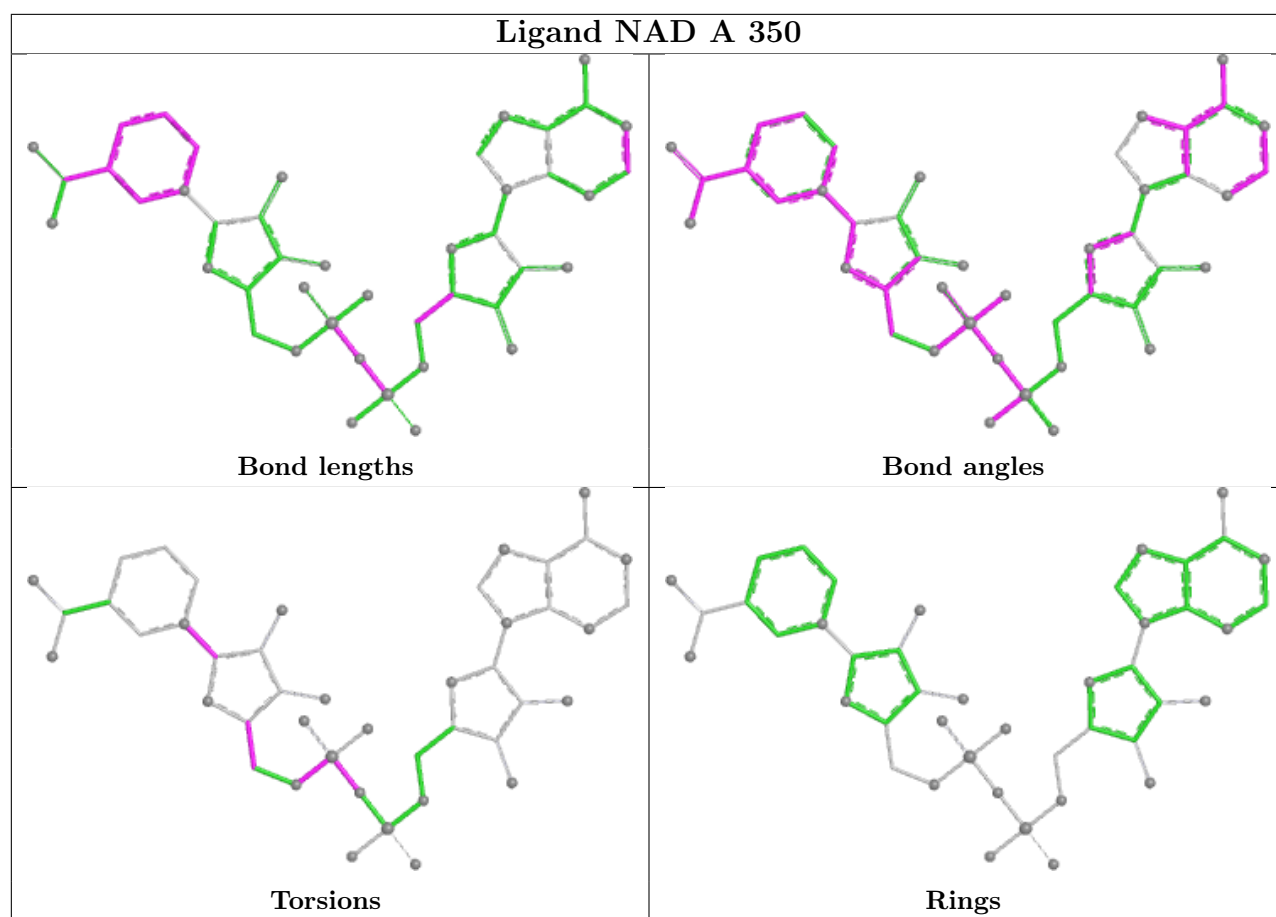
2 monomers are involved in 4 short contacts:

Mol	Chain	Res	Type	Clashes	Symm-Clashes
2	A	351	CAA	1	0
2	B	751	CAA	3	0

The following is a two-dimensional graphical depiction of Mogul quality analysis of bond lengths, bond angles, torsion angles, and ring geometry for all instances of the Ligand of Interest. In addition, ligands with molecular weight > 250 and outliers as shown on the validation Tables will also be included. For torsion angles, if less than 5% of the Mogul distribution of torsion angles is within 10 degrees of the torsion angle in question, then that torsion angle is considered an outlier. Any bond that is central to one or more torsion angles identified as an outlier by Mogul will be highlighted in the graph. For rings, the root-mean-square deviation (RMSD) between the ring in question and similar rings identified by Mogul is calculated over all ring torsion angles. If the average RMSD is greater than 60 degrees and the minimal RMSD between the ring in question and any Mogul-identified rings is also greater than 60 degrees, then that ring is considered an outlier. The outliers are highlighted in purple. The color gray indicates Mogul did not find sufficient equivalents in the CSD to analyse the geometry.







## 5.7 Other polymers [i](#)

There are no such residues in this entry.

## 5.8 Polymer linkage issues [i](#)

There are no chain breaks in this entry.

## 6 Fit of model and data

### 6.1 Protein, DNA and RNA chains

In the following table, the column labelled ‘#RSRZ > 2’ contains the number (and percentage) of RSRZ outliers, followed by percent RSRZ outliers for the chain as percentile scores relative to all X-ray entries and entries of similar resolution. The OWAB column contains the minimum, median, 95<sup>th</sup> percentile and maximum values of the occupancy-weighted average B-factor per residue. The column labelled ‘Q < 0.9’ lists the number of (and percentage) of residues with an average occupancy less than 0.9.

Mol	Chain	Analysed	<RSRZ>	#RSRZ>2	OWAB(Å <sup>2</sup> )	Q<0.9
1	A	291/302 (96%)	0.30	18 (6%) 20 16	10, 18, 48, 65	0
1	B	291/302 (96%)	-0.14	8 (2%) 54 49	10, 16, 32, 53	0
All	All	582/604 (96%)	0.08	26 (4%) 33 27	10, 17, 41, 65	0

All (26) RSRZ outliers are listed below:

Mol	Chain	Res	Type	RSRZ
1	A	71	ALA	7.7
1	A	302	LYS	7.3
1	A	65	VAL	5.9
1	A	68	LYS	5.4
1	A	69	LYS	4.9
1	A	67	LYS	4.8
1	A	73	ASN	4.5
1	B	12	LYS	4.5
1	A	64	LYS	4.3
1	A	66	ALA	4.3
1	A	70	PHE	4.2
1	B	302	LYS	4.1
1	B	13	ILE	4.1
1	A	271	GLU	3.7
1	A	13	ILE	3.1
1	A	268	MET	3.0
1	B	268	MET	3.0
1	A	74	PRO	2.9
1	A	12	LYS	2.4
1	B	68	LYS	2.4
1	B	67	LYS	2.4
1	B	49	ASP	2.4
1	A	75	LYS	2.3
1	B	267	GLU	2.3

*Continued on next page...*

*Continued from previous page...*

Mol	Chain	Res	Type	RSRZ
1	A	72	GLU	2.3
1	A	125	PHE	2.2

## 6.2 Non-standard residues in protein, DNA, RNA chains [i](#)

There are no non-standard protein/DNA/RNA residues in this entry.

## 6.3 Carbohydrates [i](#)

There are no monosaccharides in this entry.

## 6.4 Ligands [i](#)

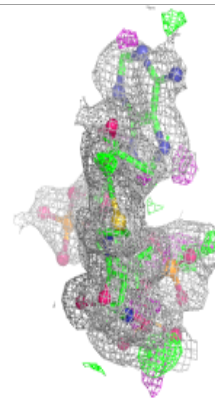
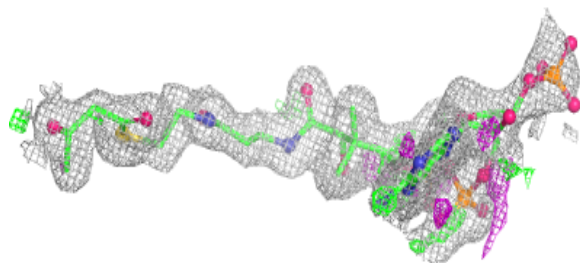
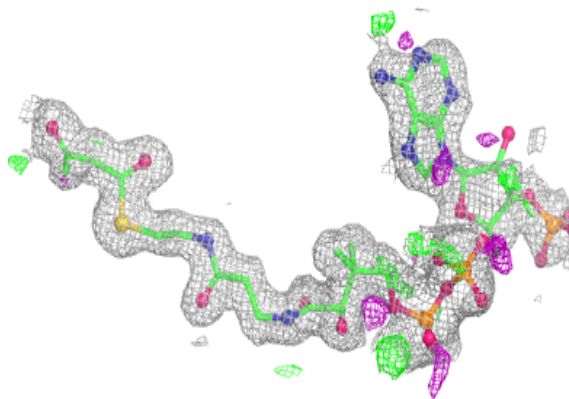
In the following table, the Atoms column lists the number of modelled atoms in the group and the number defined in the chemical component dictionary. The B-factors column lists the minimum, median, 95<sup>th</sup> percentile and maximum values of B factors of atoms in the group. The column labelled 'Q<0.9' lists the number of atoms with occupancy less than 0.9.

Mol	Type	Chain	Res	Atoms	RSCC	RSR	B-factors(Å <sup>2</sup> )	Q<0.9
2	CAA	A	351	54/54	0.84	0.20	12,53,82,83	0
2	CAA	B	751	54/54	0.84	0.22	9,54,95,96	0
3	NAD	A	350	44/44	0.95	0.11	12,18,22,23	0
3	NAD	B	750	44/44	0.97	0.10	9,14,20,23	0

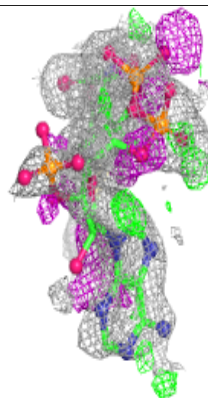
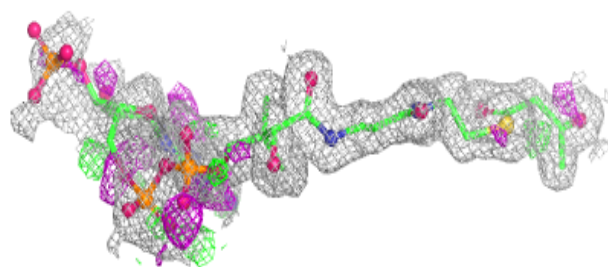
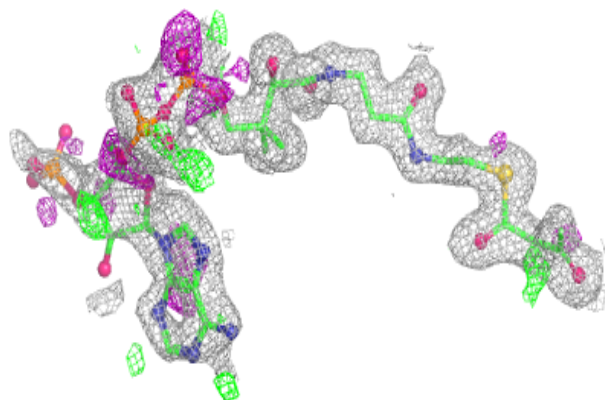
The following is a graphical depiction of the model fit to experimental electron density of all instances of the Ligand of Interest. In addition, ligands with molecular weight > 250 and outliers as shown on the geometry validation Tables will also be included. Each fit is shown from different orientation to approximate a three-dimensional view.

**Electron density around CAA A 351:**

$2mF_o-DF_c$  (at 0.7 rmsd) in gray  
 $mF_o-DF_c$  (at 3 rmsd) in purple (negative)  
and green (positive)

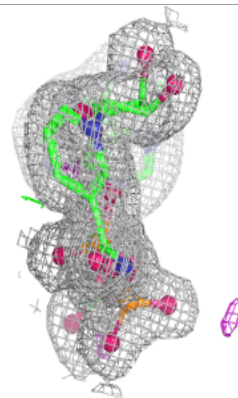
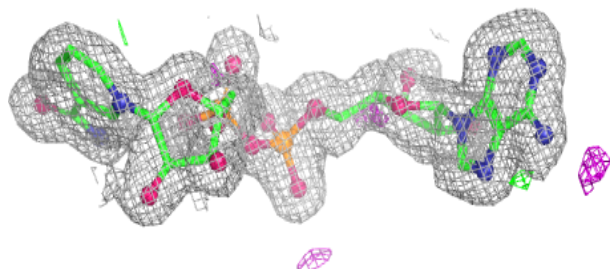
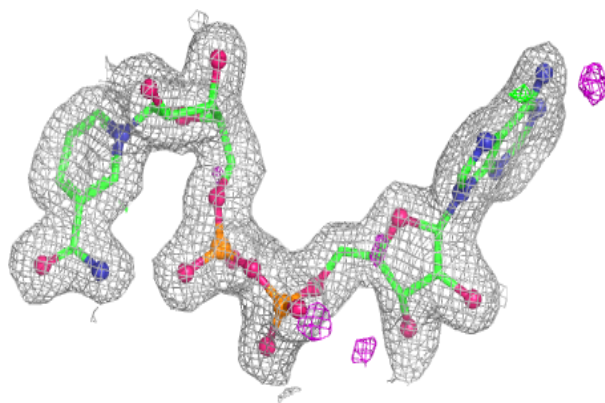
**Electron density around CAA B 751:**

$2mF_o-DF_c$  (at 0.7 rmsd) in gray  
 $mF_o-DF_c$  (at 3 rmsd) in purple (negative)  
and green (positive)

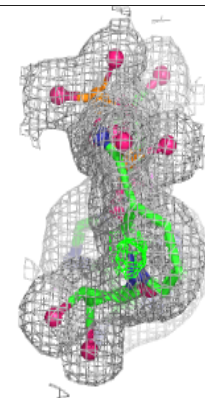
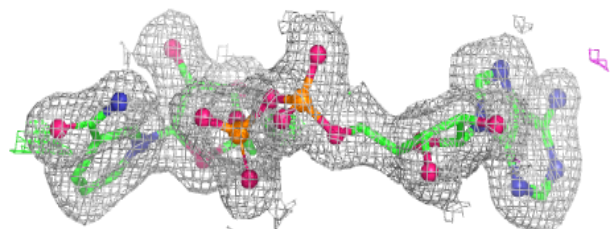
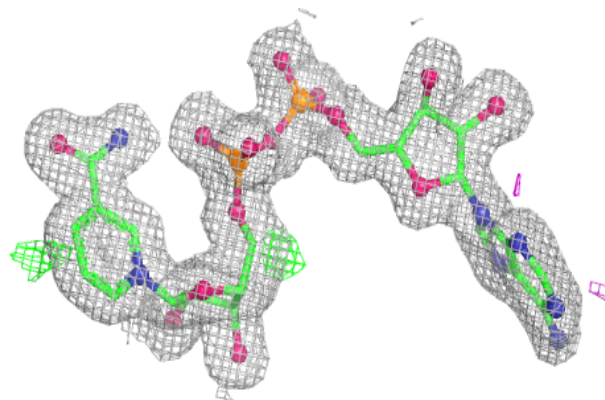


**Electron density around NAD A 350:**

$2mF_o-DF_c$  (at 0.7 rmsd) in gray  
 $mF_o-DF_c$  (at 3 rmsd) in purple (negative)  
and green (positive)

**Electron density around NAD B 750:**

$2mF_o-DF_c$  (at 0.7 rmsd) in gray  
 $mF_o-DF_c$  (at 3 rmsd) in purple (negative)  
and green (positive)



## 6.5 Other polymers [i](#)

There are no such residues in this entry.