



Full wwPDB X-ray Structure Validation Report ⓘ

Jun 12, 2024 – 06:58 PM EDT

PDB ID : 1LDO
Title : avidin-norbioitn complex
Authors : Pazy, Y.; Kulik, T.; Bayer, E.A.; Wilchek, M.; Livnah, O.
Deposited on : 2002-04-09
Resolution : 2.20 Å(reported)

This is a Full wwPDB X-ray Structure Validation Report for a publicly released PDB entry.

We welcome your comments at validation@mail.wwpdb.org

A user guide is available at

<https://www.wwpdb.org/validation/2017/XrayValidationReportHelp>

with specific help available everywhere you see the ⓘ symbol.

The types of validation reports are described at

<http://www.wwpdb.org/validation/2017/FAQs#types>.

The following versions of software and data (see [references ⓘ](#)) were used in the production of this report:

MolProbity : 4.02b-467
Mogul : 1.8.5 (274361), CSD as541be (2020)
Xtrriage (Phenix) : **NOT EXECUTED**
EDS : **NOT EXECUTED**
Percentile statistics : 20191225.v01 (using entries in the PDB archive December 25th 2019)
Ideal geometry (proteins) : Engh & Huber (2001)
Ideal geometry (DNA, RNA) : Parkinson et al. (1996)
Validation Pipeline (wwPDB-VP) : 2.36.2

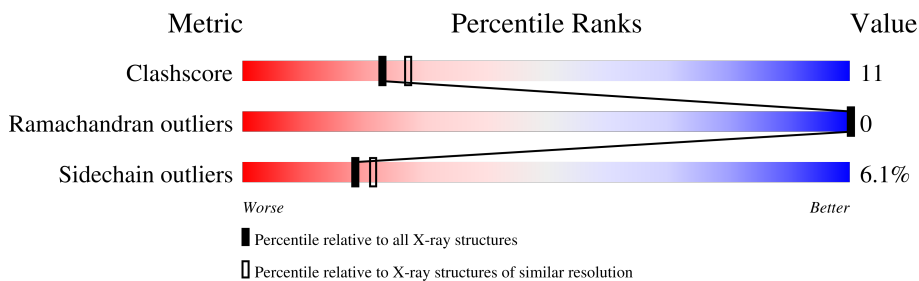
1 Overall quality at a glance

The following experimental techniques were used to determine the structure:

X-RAY DIFFRACTION

The reported resolution of this entry is 2.20 Å.

Percentile scores (ranging between 0-100) for global validation metrics of the entry are shown in the following graphic. The table shows the number of entries on which the scores are based.



Metric	Whole archive (#Entries)	Similar resolution (#Entries, resolution range(Å))
Clashscore	141614	5594 (2.20-2.20)
Ramachandran outliers	138981	5503 (2.20-2.20)
Sidechain outliers	138945	5504 (2.20-2.20)

The table below summarises the geometric issues observed across the polymeric chains and their fit to the electron density. The red, orange, yellow and green segments of the lower bar indicate the fraction of residues that contain outliers for ≥ 3 , 2, 1 and 0 types of geometric quality criteria respectively. A grey segment represents the fraction of residues that are not modelled. The numeric value for each fraction is indicated below the corresponding segment, with a dot representing fractions $\leq 5\%$.

Note EDS was not executed.

Mol	Chain	Length	Quality of chain
1	A	128	
1	B	128	

The following table lists non-polymeric compounds, carbohydrate monomers and non-standard residues in protein, DNA, RNA chains that are outliers for geometric or electron-density-fit criteria:

Mol	Type	Chain	Res	Chirality	Geometry	Clashes	Electron density
2	NAG	A	151	X	-	-	-
2	NAG	B	352	X	-	-	-

2 Entry composition [i](#)

There are 4 unique types of molecules in this entry. The entry contains 2057 atoms, of which 0 are hydrogens and 0 are deuteriums.

In the tables below, the ZeroOcc column contains the number of atoms modelled with zero occupancy, the AltConf column contains the number of residues with at least one atom in alternate conformation and the Trace column contains the number of residues modelled with at most 2 atoms.

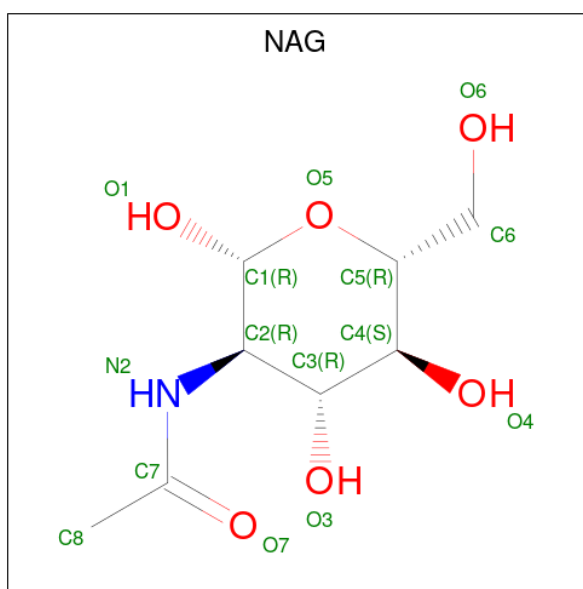
- Molecule 1 is a protein called avidin.

Mol	Chain	Residues	Atoms					ZeroOcc	AltConf	Trace
			Total	C	N	O	S			
1	A	121	Total 946	C 592	N 165	O 185	S 4	0	0	0
1	B	121	Total 946	C 592	N 165	O 185	S 4	0	0	0

There are 2 discrepancies between the modelled and reference sequences:

Chain	Residue	Modelled	Actual	Comment	Reference
A	34	THR	ILE	conflict	UNP P02701
B	234	THR	ILE	conflict	UNP P02701

- Molecule 2 is 2-acetamido-2-deoxy-beta-D-glucopyranose (three-letter code: NAG) (formula: $C_8H_{15}NO_6$).



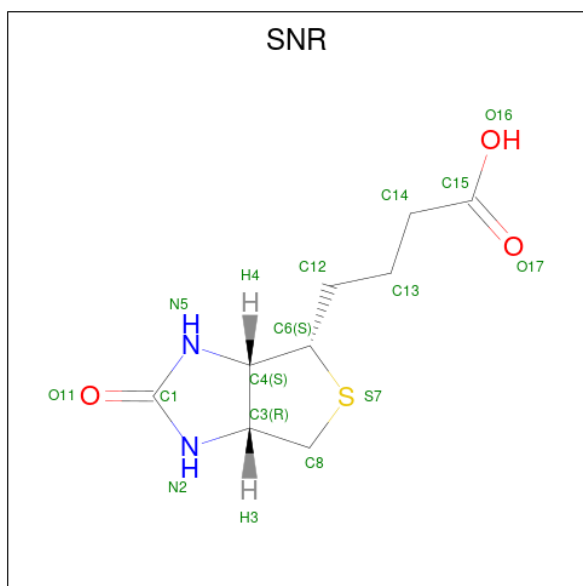
Mol	Chain	Residues	Atoms				ZeroOcc	AltConf
			Total	C	N	O		
2	A	1	Total 14	C 8	N 1	O 5	0	0

Continued on next page...

Continued from previous page...

Mol	Chain	Residues	Atoms				ZeroOcc	AltConf
			Total	C	N	O		
2	B	1	14	8	1	5	0	0

- Molecule 3 is NORBIOTIN (three-letter code: SNR) (formula: C₉H₁₄N₂O₃S).



Mol	Chain	Residues	Atoms					ZeroOcc	AltConf
			Total	C	N	O	S		
3	A	1	15	9	2	3	1	0	0
3	B	1	15	9	2	3	1	0	0

- Molecule 4 is water.

Mol	Chain	Residues	Atoms		ZeroOcc	AltConf
4	A	47	Total	O	0	0
			47	47		
4	B	60	Total	O	0	0
			60	60		

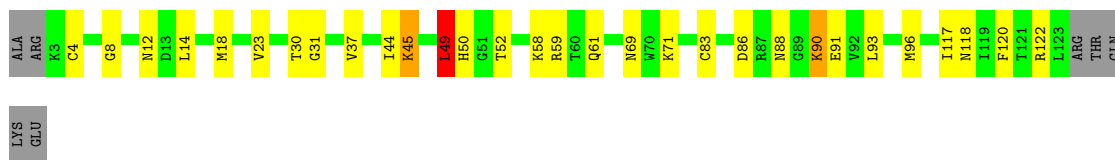
3 Residue-property plots [i](#)

These plots are drawn for all protein, RNA, DNA and oligosaccharide chains in the entry. The first graphic for a chain summarises the proportions of the various outlier classes displayed in the second graphic. The second graphic shows the sequence view annotated by issues in geometry. Residues are color-coded according to the number of geometric quality criteria for which they contain at least one outlier: green = 0, yellow = 1, orange = 2 and red = 3 or more. Stretches of 2 or more consecutive residues without any outlier are shown as a green connector. Residues present in the sample, but not in the model, are shown in grey.

Note EDS was not executed.

- Molecule 1: avidin

Chain A: 



- Molecule 1: avidin

Chain B: 



4 Data and refinement statistics

Xtrriage (Phenix) and EDS were not executed - this section is therefore incomplete.

Property	Value	Source
Space group	P 21 21 2	Depositor
Cell constants a, b, c, α , β , γ	71.10Å 79.81Å 43.14Å 90.00° 90.00° 90.00°	Depositor
Resolution (Å)	30.00 – 2.20	Depositor
% Data completeness (in resolution range)	(Not available) (30.00-2.20)	Depositor
R_{merge}	(Not available)	Depositor
R_{sym}	0.12	Depositor
Refinement program	CNS	Depositor
R, R_{free}	0.183 , 0.241	Depositor
Estimated twinning fraction	No twinning to report.	Xtrriage
Total number of atoms	2057	wwPDB-VP
Average B, all atoms (Å ²)	26.0	wwPDB-VP

5 Model quality [i](#)

5.1 Standard geometry [i](#)

Bond lengths and bond angles in the following residue types are not validated in this section: SNR, NAG

The Z score for a bond length (or angle) is the number of standard deviations the observed value is removed from the expected value. A bond length (or angle) with $|Z| > 5$ is considered an outlier worth inspection. RMSZ is the root-mean-square of all Z scores of the bond lengths (or angles).

Mol	Chain	Bond lengths		Bond angles	
		RMSZ	# Z >5	RMSZ	# Z >5
1	A	0.60	0/964	0.80	1/1306 (0.1%)
1	B	0.60	0/964	0.83	2/1306 (0.2%)
All	All	0.60	0/1928	0.82	3/2612 (0.1%)

There are no bond length outliers.

All (3) bond angle outliers are listed below:

Mol	Chain	Res	Type	Atoms	Z	Observed(°)	Ideal(°)
1	B	249	LEU	CA-CB-CG	7.40	132.33	115.30
1	A	49	LEU	CA-CB-CG	7.21	131.89	115.30
1	B	285	ILE	N-CA-C	-5.20	96.96	111.00

There are no chirality outliers.

There are no planarity outliers.

5.2 Too-close contacts [i](#)

In the following table, the Non-H and H(model) columns list the number of non-hydrogen atoms and hydrogen atoms in the chain respectively. The H(added) column lists the number of hydrogen atoms added and optimized by MolProbity. The Clashes column lists the number of clashes within the asymmetric unit, whereas Symm-Clashes lists symmetry-related clashes.

Mol	Chain	Non-H	H(model)	H(added)	Clashes	Symm-Clashes
1	A	946	0	928	22	0
1	B	946	0	925	22	0
2	A	14	0	13	0	0
2	B	14	0	13	0	0
3	A	15	0	13	2	0
3	B	15	0	13	0	0

Continued on next page...

Continued from previous page...

Mol	Chain	Non-H	H(model)	H(added)	Clashes	Symm-Clashes
4	A	47	0	0	0	0
4	B	60	0	0	2	0
All	All	2057	0	1905	43	0

The all-atom clashscore is defined as the number of clashes found per 1000 atoms (including hydrogen atoms). The all-atom clashscore for this structure is 11.

All (43) close contacts within the same asymmetric unit are listed below, sorted by their clash magnitude.

Atom-1	Atom-2	Interatomic distance (Å)	Clash overlap (Å)
1:B:296:MET:HG2	1:B:317:ILE:HG22	1.50	0.92
1:B:226:ARG:NH1	1:B:226:ARG:HB2	1.94	0.80
1:A:96:MET:HG2	1:A:117:ILE:HG22	1.67	0.76
1:A:59:ARG:HD3	1:A:61:GLN:O	1.85	0.76
1:B:322:ARG:HG3	1:B:322:ARG:HH11	1.53	0.73
1:A:118:ASN:HD21	3:A:150:SNR:HN2	1.36	0.72
1:B:312:ALA:N	4:B:401:HOH:O	2.22	0.71
1:A:59:ARG:HG2	1:A:61:GLN:H	1.59	0.67
1:A:4:CYS:SG	1:A:91:GLU:HG2	2.34	0.66
1:B:226:ARG:HB2	1:B:226:ARG:HH11	1.61	0.65
1:A:58:LYS:HB3	1:A:58:LYS:NZ	2.12	0.64
1:A:58:LYS:HB3	1:A:58:LYS:HZ2	1.63	0.63
1:A:117:ILE:HG12	1:B:317:ILE:HG12	1.80	0.63
1:A:118:ASN:ND2	3:A:150:SNR:HN2	1.97	0.62
1:B:226:ARG:HH11	1:B:226:ARG:CB	2.12	0.61
1:B:322:ARG:HG3	1:B:322:ARG:NH1	2.16	0.60
1:A:44:ILE:C	1:A:45:LYS:HE2	2.24	0.58
1:B:309:ASP:O	4:B:401:HOH:O	2.17	0.57
1:B:245:LYS:HG2	1:B:272:PHE:HB3	1.86	0.56
1:B:297:TRP:CZ2	1:B:316:GLY:HA3	2.40	0.56
1:B:214:LEU:HD22	1:B:318:ASN:HD21	1.71	0.55
1:A:88:ASN:HB2	1:A:90:LYS:HG2	1.89	0.53
1:A:93:LEU:HB2	1:A:120:PHE:HB2	1.90	0.53
1:A:31:GLY:C	1:A:49:LEU:HD13	2.29	0.52
1:B:244:ILE:O	1:B:245:LYS:HD2	2.11	0.51
1:B:230:THR:HG22	1:B:250:HIS:ND1	2.24	0.50
1:A:14:LEU:HD13	1:A:37:VAL:HG21	1.94	0.49
1:B:291:GLU:OE1	1:B:322:ARG:NH1	2.48	0.47
1:A:90:LYS:NZ	1:A:90:LYS:HB2	2.30	0.47
1:A:4:CYS:CB	1:A:83:CYS:SG	3.04	0.46
1:B:293:LEU:HB2	1:B:320:PHE:HB2	1.99	0.45

Continued on next page...

Continued from previous page...

Atom-1	Atom-2	Interatomic distance (Å)	Clash overlap (Å)
1:B:322:ARG:NH1	1:B:322:ARG:CG	2.78	0.44
1:B:226:ARG:NH1	1:B:228:GLU:OE1	2.41	0.43
1:A:30:THR:HG22	1:A:50:HIS:ND1	2.33	0.42
1:A:86:ASP:HB3	1:A:90:LYS:O	2.20	0.42
1:B:212:ASN:HB3	1:B:320:PHE:CD2	2.54	0.42
1:A:8:GLY:HA3	1:A:122:ARG:HH12	1.84	0.42
1:B:226:ARG:NH1	1:B:226:ARG:CB	2.69	0.42
1:A:12:ASN:HB3	1:A:120:PHE:CD1	2.55	0.41
1:A:12:ASN:HB3	1:A:120:PHE:CE1	2.56	0.41
1:B:204:CYS:HB2	1:B:285:ILE:CD1	2.51	0.41
1:B:296:MET:HG2	1:B:317:ILE:CG2	2.36	0.41
1:A:58:LYS:NZ	1:A:58:LYS:CB	2.82	0.40

There are no symmetry-related clashes.

5.3 Torsion angles [i](#)

5.3.1 Protein backbone [i](#)

In the following table, the Percentiles column shows the percent Ramachandran outliers of the chain as a percentile score with respect to all X-ray entries followed by that with respect to entries of similar resolution.

The Analysed column shows the number of residues for which the backbone conformation was analysed, and the total number of residues.

Mol	Chain	Analysed	Favoured	Allowed	Outliers	Percentiles	
1	A	119/128 (93%)	118 (99%)	1 (1%)	0	100	100
1	B	119/128 (93%)	117 (98%)	2 (2%)	0	100	100
All	All	238/256 (93%)	235 (99%)	3 (1%)	0	100	100

There are no Ramachandran outliers to report.

5.3.2 Protein sidechains [i](#)

In the following table, the Percentiles column shows the percent sidechain outliers of the chain as a percentile score with respect to all X-ray entries followed by that with respect to entries of similar resolution.

The Analysed column shows the number of residues for which the sidechain conformation was

analysed, and the total number of residues.

Mol	Chain	Analysed	Rotameric	Outliers	Percentiles	
1	A	106/112 (95%)	98 (92%)	8 (8%)	13	14
1	B	106/112 (95%)	101 (95%)	5 (5%)	26	33
All	All	212/224 (95%)	199 (94%)	13 (6%)	18	21

All (13) residues with a non-rotameric sidechain are listed below:

Mol	Chain	Res	Type
1	A	18	MET
1	A	23	VAL
1	A	45	LYS
1	A	49	LEU
1	A	52	THR
1	A	69	ASN
1	A	71	LYS
1	A	90	LYS
1	B	214	LEU
1	B	249	LEU
1	B	263	THR
1	B	321	THR
1	B	323	LEU

Sometimes sidechains can be flipped to improve hydrogen bonding and reduce clashes. All (7) such sidechains are listed below:

Mol	Chain	Res	Type
1	A	57	ASN
1	A	69	ASN
1	A	82	GLN
1	A	88	ASN
1	A	118	ASN
1	B	269	ASN
1	B	282	GLN

5.3.3 RNA ⓘ

There are no RNA molecules in this entry.

5.4 Non-standard residues in protein, DNA, RNA chains [i](#)

There are no non-standard protein/DNA/RNA residues in this entry.

5.5 Carbohydrates [i](#)

There are no monosaccharides in this entry.

5.6 Ligand geometry [i](#)

4 ligands are modelled in this entry.

In the following table, the Counts columns list the number of bonds (or angles) for which Mogul statistics could be retrieved, the number of bonds (or angles) that are observed in the model and the number of bonds (or angles) that are defined in the Chemical Component Dictionary. The Link column lists molecule types, if any, to which the group is linked. The Z score for a bond length (or angle) is the number of standard deviations the observed value is removed from the expected value. A bond length (or angle) with $|Z| > 2$ is considered an outlier worth inspection. RMSZ is the root-mean-square of all Z scores of the bond lengths (or angles).

Mol	Type	Chain	Res	Link	Bond lengths			Bond angles		
					Counts	RMSZ	# Z > 2	Counts	RMSZ	# Z > 2
3	SNR	A	150	-	16,16,16	2.59	4 (25%)	22,22,22	2.25	9 (40%)
2	NAG	B	352	1	14,14,15	0.71	0	17,19,21	0.82	1 (5%)
3	SNR	B	350	-	16,16,16	2.54	4 (25%)	22,22,22	2.42	9 (40%)
2	NAG	A	151	1	14,14,15	0.67	0	17,19,21	1.07	1 (5%)

In the following table, the Chirals column lists the number of chiral outliers, the number of chiral centers analysed, the number of these observed in the model and the number defined in the Chemical Component Dictionary. Similar counts are reported in the Torsion and Rings columns. '-' means no outliers of that kind were identified.

Mol	Type	Chain	Res	Link	Chirals	Torsions	Rings
3	SNR	A	150	-	-	3/6/27/27	0/2/2/2
2	NAG	B	352	1	1/1/5/7	2/6/23/26	0/1/1/1
3	SNR	B	350	-	-	3/6/27/27	0/2/2/2
2	NAG	A	151	1	1/1/5/7	2/6/23/26	0/1/1/1

All (8) bond length outliers are listed below:

Mol	Chain	Res	Type	Atoms	Z	Observed(Å)	Ideal(Å)
3	A	150	SNR	O17-C15	-9.00	0.92	1.22

Continued on next page...

Continued from previous page...

Mol	Chain	Res	Type	Atoms	Z	Observed(Å)	Ideal(Å)
3	B	350	SNR	O17-C15	-8.74	0.93	1.22
3	A	150	SNR	C6-C4	3.54	1.61	1.53
3	B	350	SNR	C6-C4	3.00	1.60	1.53
3	B	350	SNR	C8-C3	2.56	1.57	1.53
3	B	350	SNR	O16-C15	-2.44	1.22	1.30
3	A	150	SNR	O16-C15	-2.44	1.22	1.30
3	A	150	SNR	C8-C3	2.26	1.57	1.53

All (20) bond angle outliers are listed below:

Mol	Chain	Res	Type	Atoms	Z	Observed(°)	Ideal(°)
3	A	150	SNR	C8-C3-C4	5.74	113.64	108.66
3	B	350	SNR	C8-C3-C4	4.91	112.92	108.66
3	B	350	SNR	C6-C4-N5	4.58	117.23	113.13
3	B	350	SNR	N5-C1-N2	3.93	112.45	108.76
2	A	151	NAG	C2-N2-C7	-3.68	117.67	122.90
3	A	150	SNR	N5-C1-N2	3.47	112.02	108.76
3	A	150	SNR	C6-C4-N5	3.40	116.17	113.13
3	B	350	SNR	C3-C8-S7	-3.17	103.59	106.31
3	A	150	SNR	O16-C15-C14	3.05	123.83	114.03
3	B	350	SNR	O16-C15-C14	3.01	123.69	114.03
3	B	350	SNR	C4-C3-N2	2.96	105.58	102.43
3	B	350	SNR	O17-C15-C14	-2.67	114.51	123.08
3	B	350	SNR	C4-N5-C1	-2.58	110.22	112.62
3	A	150	SNR	O17-C15-C14	-2.56	114.87	123.08
3	A	150	SNR	C3-C8-S7	-2.50	104.17	106.31
3	A	150	SNR	C4-C3-N2	2.48	105.07	102.43
3	B	350	SNR	C3-N2-C1	-2.46	109.26	112.46
2	B	352	NAG	C2-N2-C7	-2.30	119.63	122.90
3	A	150	SNR	C4-N5-C1	-2.12	110.64	112.62
3	A	150	SNR	C8-C3-N2	-2.03	110.45	113.03

All (2) chirality outliers are listed below:

Mol	Chain	Res	Type	Atom
2	A	151	NAG	C1
2	B	352	NAG	C1

All (10) torsion outliers are listed below:

Mol	Chain	Res	Type	Atoms
2	A	151	NAG	O5-C5-C6-O6

Continued on next page...

Continued from previous page...

Mol	Chain	Res	Type	Atoms
2	A	151	NAG	C4-C5-C6-O6
2	B	352	NAG	O5-C5-C6-O6
2	B	352	NAG	C4-C5-C6-O6
3	A	150	SNR	C12-C13-C14-C15
3	B	350	SNR	C12-C13-C14-C15
3	A	150	SNR	C13-C14-C15-O16
3	B	350	SNR	C13-C14-C15-O16
3	A	150	SNR	C13-C14-C15-O17
3	B	350	SNR	C13-C14-C15-O17

There are no ring outliers.

1 monomer is involved in 2 short contacts:

Mol	Chain	Res	Type	Clashes	Symm-Clashes
3	A	150	SNR	2	0

5.7 Other polymers [i](#)

There are no such residues in this entry.

5.8 Polymer linkage issues [i](#)

There are no chain breaks in this entry.

6 Fit of model and data [i](#)

6.1 Protein, DNA and RNA chains [i](#)

EDS was not executed - this section is therefore empty.

6.2 Non-standard residues in protein, DNA, RNA chains [i](#)

EDS was not executed - this section is therefore empty.

6.3 Carbohydrates [i](#)

EDS was not executed - this section is therefore empty.

6.4 Ligands [i](#)

EDS was not executed - this section is therefore empty.

6.5 Other polymers [i](#)

EDS was not executed - this section is therefore empty.