



Full wwPDB X-ray Structure Validation Report ⓘ

Jun 12, 2024 – 01:02 AM EDT

PDB ID : 1M4D
Title : Aminoglycoside 2'-N-acetyltransferase from Mycobacterium tuberculosis-
Complex with Coenzyme A and Tobramycin
Authors : Vetting, M.W.; Hegde, S.S.; Javid-Majd, F.; Blanchard, J.S.; Roderick, S.L.
Deposited on : 2002-07-02
Resolution : 1.80 Å(reported)

This is a Full wwPDB X-ray Structure Validation Report for a publicly released PDB entry.

We welcome your comments at validation@mail.wwpdb.org

A user guide is available at

<https://www.wwpdb.org/validation/2017/XrayValidationReportHelp>

with specific help available everywhere you see the ⓘ symbol.

The types of validation reports are described at

<http://www.wwpdb.org/validation/2017/FAQs#types>.

The following versions of software and data (see [references ⓘ](#)) were used in the production of this report:

MolProbity : 4.02b-467
Mogul : 2022.3.0, CSD as543be (2022)
Xtrriage (Phenix) : 1.20.1
EDS : 2.36.2
buster-report : 1.1.7 (2018)
Percentile statistics : 20191225.v01 (using entries in the PDB archive December 25th 2019)
Refmac : 5.8.0158
CCP4 : 7.0.044 (Gargrove)
Ideal geometry (proteins) : Engh & Huber (2001)
Ideal geometry (DNA, RNA) : Parkinson et al. (1996)
Validation Pipeline (wwPDB-VP) : 2.36.2

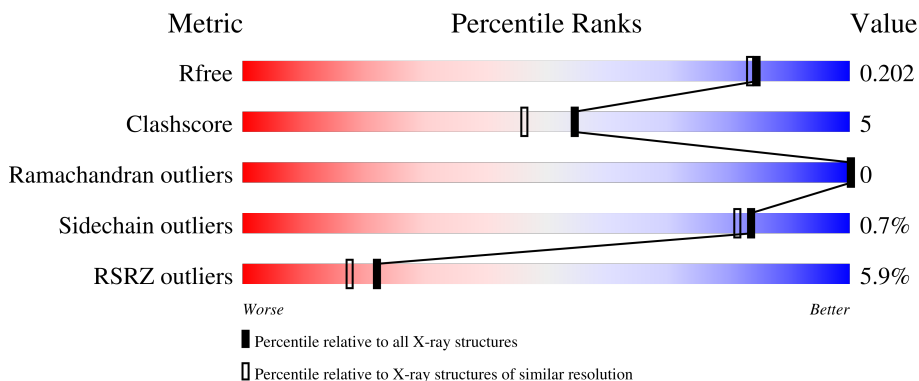
1 Overall quality at a glance

The following experimental techniques were used to determine the structure:

X-RAY DIFFRACTION

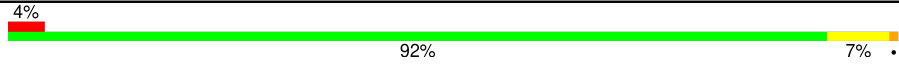
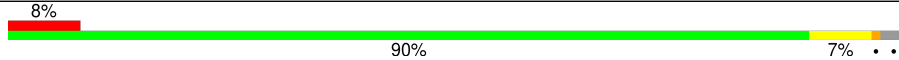
The reported resolution of this entry is 1.80 Å.

Percentile scores (ranging between 0-100) for global validation metrics of the entry are shown in the following graphic. The table shows the number of entries on which the scores are based.



Metric	Whole archive (#Entries)	Similar resolution (#Entries, resolution range(Å))
R_{free}	130704	5950 (1.80-1.80)
Clashscore	141614	6793 (1.80-1.80)
Ramachandran outliers	138981	6697 (1.80-1.80)
Sidechain outliers	138945	6696 (1.80-1.80)
RSRZ outliers	127900	5850 (1.80-1.80)

The table below summarises the geometric issues observed across the polymeric chains and their fit to the electron density. The red, orange, yellow and green segments of the lower bar indicate the fraction of residues that contain outliers for ≥ 3 , 2, 1 and 0 types of geometric quality criteria respectively. A grey segment represents the fraction of residues that are not modelled. The numeric value for each fraction is indicated below the corresponding segment, with a dot representing fractions $\leq 5\%$. The upper red bar (where present) indicates the fraction of residues that have poor fit to the electron density. The numeric value is given above the bar.

Mol	Chain	Length	Quality of chain
1	A	181	 4% 92% 7% .
1	B	181	 8% 90% 7% . .

2 Entry composition [i](#)

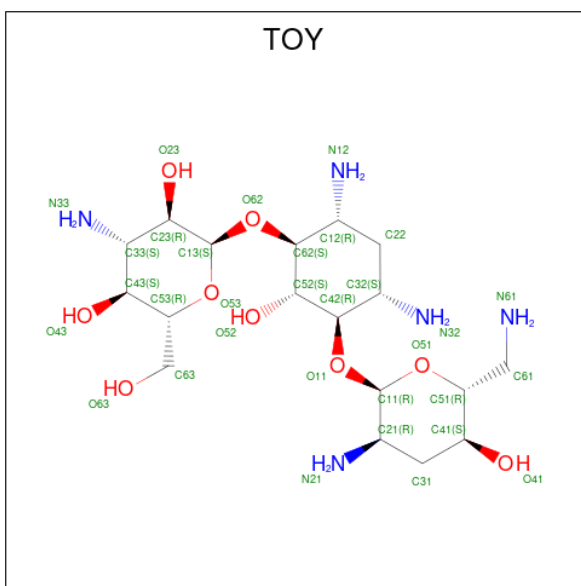
There are 5 unique types of molecules in this entry. The entry contains 3210 atoms, of which 0 are hydrogens and 0 are deuteriums.

In the tables below, the ZeroOcc column contains the number of atoms modelled with zero occupancy, the AltConf column contains the number of residues with at least one atom in alternate conformation and the Trace column contains the number of residues modelled with at most 2 atoms.

- Molecule 1 is a protein called Aminoglycoside 2'-N-acetyltransferase.

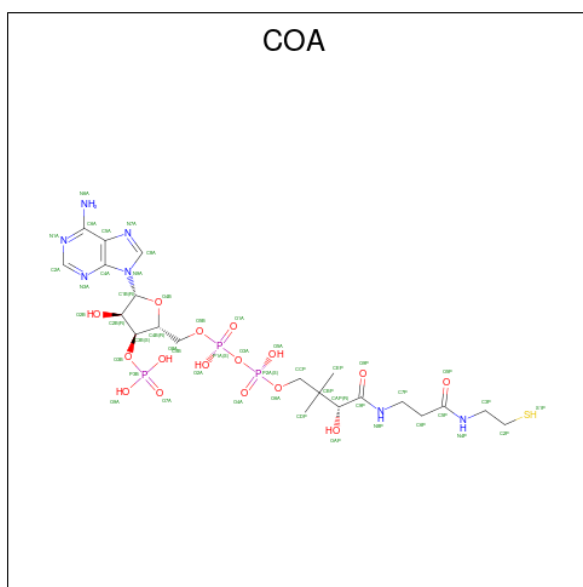
Mol	Chain	Residues	Atoms					ZeroOcc	AltConf	Trace
			Total	C	N	O	S			
1	A	181	Total	C	N	O	S	0	0	0
			1412	884	265	256	7			
1	B	176	Total	C	N	O	S	0	0	0
			1371	859	257	249	6			

- Molecule 2 is TOBRAMYCIN (three-letter code: TOY) (formula: $C_{18}H_{37}N_5O_9$).



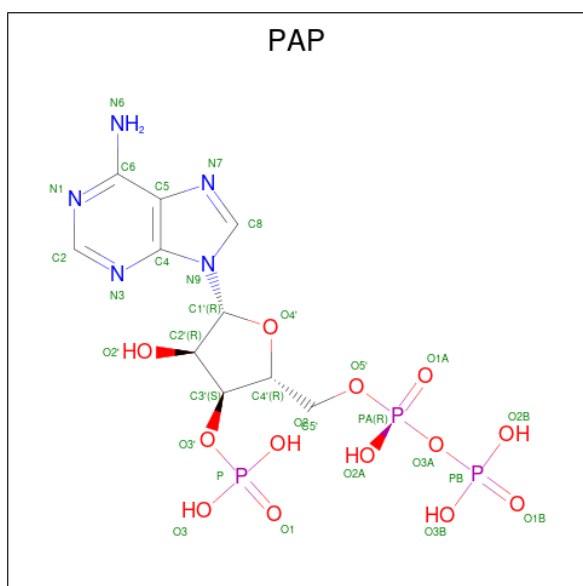
Mol	Chain	Residues	Atoms				ZeroOcc	AltConf
			Total	C	N	O		
2	A	1	Total	C	N	O	0	0
			32	18	5	9		
2	B	1	Total	C	N	O	0	0
			32	18	5	9		

- Molecule 3 is COENZYME A (three-letter code: COA) (formula: $C_{21}H_{36}N_7O_{16}P_3S$).



Mol	Chain	Residues	Atoms					ZeroOcc	AltConf	
			Total	C	N	O	P			S
3	A	1	48	21	7	16	3	1	0	0
3	B	1	48	21	7	16	3	1	0	0

- Molecule 4 is 3'-PHOSPHATE-ADENOSINE-5'-DIPHOSPHATE (three-letter code: PAP) (formula: $C_{10}H_{16}N_5O_{13}P_3$).



Mol	Chain	Residues	Atoms					ZeroOcc	AltConf
			Total	C	N	O	P		
4	A	1	31	10	5	13	3	0	0

- Molecule 5 is water.

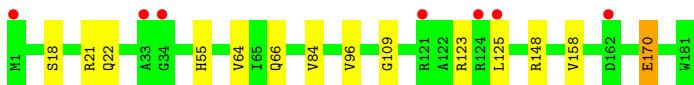
Mol	Chain	Residues	Atoms		ZeroOcc	AltConf
5	A	136	Total 136	O 136	0	0
5	B	100	Total 100	O 100	0	0

3 Residue-property plots [i](#)


These plots are drawn for all protein, RNA, DNA and oligosaccharide chains in the entry. The first graphic for a chain summarises the proportions of the various outlier classes displayed in the second graphic. The second graphic shows the sequence view annotated by issues in geometry and electron density. Residues are color-coded according to the number of geometric quality criteria for which they contain at least one outlier: green = 0, yellow = 1, orange = 2 and red = 3 or more. A red dot above a residue indicates a poor fit to the electron density ($RSRZ > 2$). Stretches of 2 or more consecutive residues without any outlier are shown as a green connector. Residues present in the sample, but not in the model, are shown in grey.

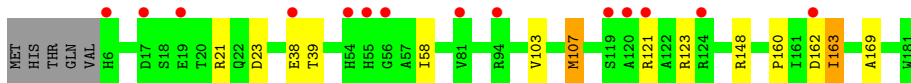
- Molecule 1: Aminoglycoside 2'-N-acetyltransferase

Chain A: 



- Molecule 1: Aminoglycoside 2'-N-acetyltransferase

Chain B: 



4 Data and refinement statistics

Property	Value	Source
Space group	P 21 21 21	Depositor
Cell constants a, b, c, α , β , γ	48.70Å 86.60Å 98.40Å 90.00° 90.00° 90.00°	Depositor
Resolution (Å)	50.00 – 1.80 25.95 – 1.80	Depositor EDS
% Data completeness (in resolution range)	97.7 (50.00-1.80) 97.5 (25.95-1.80)	Depositor EDS
R_{merge}	(Not available)	Depositor
R_{sym}	0.04	Depositor
$\langle I/\sigma(I) \rangle$ ¹	4.38 (at 1.80Å)	Xtrriage
Refinement program	CNS 1.0	Depositor
R, R_{free}	0.174 , 0.211 0.166 , 0.202	Depositor DCC
R_{free} test set	1922 reflections (5.00%)	wwPDB-VP
Wilson B-factor (Å ²)	19.4	Xtrriage
Anisotropy	0.021	Xtrriage
Bulk solvent k_{sol} (e/Å ³), B_{sol} (Å ²)	0.39 , 55.7	EDS
L-test for twinning ²	$\langle L \rangle = 0.46$, $\langle L^2 \rangle = 0.29$	Xtrriage
Estimated twinning fraction	No twinning to report.	Xtrriage
F_o, F_c correlation	0.96	EDS
Total number of atoms	3210	wwPDB-VP
Average B, all atoms (Å ²)	22.0	wwPDB-VP

Xtrriage's analysis on translational NCS is as follows: *The largest off-origin peak in the Patterson function is 5.76% of the height of the origin peak. No significant pseudotranslation is detected.*

¹Intensities estimated from amplitudes.

²Theoretical values of $\langle |L| \rangle$, $\langle L^2 \rangle$ for acentric reflections are 0.5, 0.333 respectively for untwinned datasets, and 0.375, 0.2 for perfectly twinned datasets.

5 Model quality [i](#)

5.1 Standard geometry [i](#)

Bond lengths and bond angles in the following residue types are not validated in this section: TOY, COA, PAP

The Z score for a bond length (or angle) is the number of standard deviations the observed value is removed from the expected value. A bond length (or angle) with $|Z| > 5$ is considered an outlier worth inspection. RMSZ is the root-mean-square of all Z scores of the bond lengths (or angles).

Mol	Chain	Bond lengths		Bond angles	
		RMSZ	# $ Z > 5$	RMSZ	# $ Z > 5$
1	A	1.12	4/1447 (0.3%)	1.06	2/1971 (0.1%)
1	B	1.03	3/1405 (0.2%)	1.13	3/1914 (0.2%)
All	All	1.08	7/2852 (0.2%)	1.09	5/3885 (0.1%)

All (7) bond length outliers are listed below:

Mol	Chain	Res	Type	Atoms	Z	Observed(Å)	Ideal(Å)
1	A	170	GLU	CD-OE1	8.04	1.34	1.25
1	A	170	GLU	CG-CD	6.61	1.61	1.51
1	B	107	MET	CG-SD	-6.25	1.65	1.81
1	B	148	ARG	CZ-NH1	5.59	1.40	1.33
1	A	158	VAL	CB-CG1	5.53	1.64	1.52
1	B	169	ALA	CA-CB	5.30	1.63	1.52
1	A	64	VAL	CB-CG1	5.07	1.63	1.52

All (5) bond angle outliers are listed below:

Mol	Chain	Res	Type	Atoms	Z	Observed(°)	Ideal(°)
1	B	107	MET	CG-SD-CE	-21.53	65.75	100.20
1	A	21	ARG	NE-CZ-NH2	-11.01	114.80	120.30
1	B	107	MET	CA-CB-CG	-9.92	96.44	113.30
1	A	148	ARG	NE-CZ-NH2	-6.40	117.10	120.30
1	B	148	ARG	NE-CZ-NH2	-5.14	117.73	120.30

There are no chirality outliers.

There are no planarity outliers.

5.2 Too-close contacts

In the following table, the Non-H and H(model) columns list the number of non-hydrogen atoms and hydrogen atoms in the chain respectively. The H(added) column lists the number of hydrogen atoms added and optimized by MolProbity. The Clashes column lists the number of clashes within the asymmetric unit, whereas Symm-Clashes lists symmetry-related clashes.

Mol	Chain	Non-H	H(model)	H(added)	Clashes	Symm-Clashes
1	A	1412	0	1374	10	0
1	B	1371	0	1331	21	0
2	A	32	0	37	0	0
2	B	32	0	37	0	0
3	A	48	0	32	1	0
3	B	48	0	32	1	0
4	A	31	0	11	2	0
5	A	136	0	0	4	0
5	B	100	0	0	1	0
All	All	3210	0	2854	30	0

The all-atom clashscore is defined as the number of clashes found per 1000 atoms (including hydrogen atoms). The all-atom clashscore for this structure is 5.

All (30) close contacts within the same asymmetric unit are listed below, sorted by their clash magnitude.

Atom-1	Atom-2	Interatomic distance (Å)	Clash overlap (Å)
1:B:107:MET:SD	1:B:107:MET:CE	2.03	1.46
1:B:107:MET:CE	1:B:107:MET:CG	2.02	1.34
1:B:107:MET:CE	1:B:107:MET:HG3	1.58	1.27
1:A:170:GLU:HG2	5:A:727:HOH:O	1.52	1.09
1:B:107:MET:HG3	1:B:107:MET:HE2	1.02	1.00
1:B:163:ILE:HD13	1:B:163:ILE:O	1.81	0.80
1:B:163:ILE:N	1:B:163:ILE:HD12	2.00	0.77
1:B:163:ILE:HD12	1:B:163:ILE:H	1.55	0.71
1:A:84:VAL:HB	3:A:600:COA:H22	1.74	0.70
1:B:162:ASP:OD2	5:B:669:HOH:O	2.12	0.67
1:B:121:ARG:HH22	3:B:601:COA:HN8	1.42	0.66
1:B:163:ILE:N	1:B:163:ILE:CD1	2.59	0.65
1:B:107:MET:CE	1:B:107:MET:CB	2.74	0.65
1:A:18:SER:O	1:A:22:GLN:HG3	1.99	0.62
1:B:123:ARG:HG2	1:B:123:ARG:HH11	1.65	0.62
1:A:55:HIS:HD2	4:A:602:PAP:O2	1.84	0.61
1:B:58:ILE:HD12	1:B:58:ILE:N	2.18	0.58
1:B:38:GLU:HG3	1:B:39:THR:N	2.20	0.57

Continued on next page...

Continued from previous page...

Atom-1	Atom-2	Interatomic distance (Å)	Clash overlap (Å)
1:B:123:ARG:HG2	1:B:123:ARG:NH1	2.19	0.56
1:A:66:GLN:OE1	5:A:653:HOH:O	2.19	0.51
1:B:23:ASP:HB3	1:B:58:ILE:HD13	1.93	0.51
1:B:163:ILE:H	1:B:163:ILE:CD1	2.20	0.50
1:A:96:VAL:HG11	1:A:125:LEU:HD22	1.94	0.49
1:A:123:ARG:CD	5:A:704:HOH:O	2.61	0.48
1:B:160:PRO:HB3	1:B:163:ILE:HD13	1.97	0.47
1:A:123:ARG:HD2	5:A:704:HOH:O	2.15	0.47
1:B:123:ARG:HH11	1:B:123:ARG:CG	2.30	0.45
1:B:163:ILE:HD13	1:B:163:ILE:C	2.37	0.45
1:A:55:HIS:CD2	4:A:602:PAP:O2	2.67	0.44
1:A:109:GLY:O	1:B:21:ARG:NH2	2.50	0.42

There are no symmetry-related clashes.

5.3 Torsion angles [i](#)

5.3.1 Protein backbone [i](#)

In the following table, the Percentiles column shows the percent Ramachandran outliers of the chain as a percentile score with respect to all X-ray entries followed by that with respect to entries of similar resolution.

The Analysed column shows the number of residues for which the backbone conformation was analysed, and the total number of residues.

Mol	Chain	Analysed	Favoured	Allowed	Outliers	Percentiles	
1	A	179/181 (99%)	177 (99%)	2 (1%)	0	100	100
1	B	174/181 (96%)	170 (98%)	4 (2%)	0	100	100
All	All	353/362 (98%)	347 (98%)	6 (2%)	0	100	100

There are no Ramachandran outliers to report.

5.3.2 Protein sidechains [i](#)

In the following table, the Percentiles column shows the percent sidechain outliers of the chain as a percentile score with respect to all X-ray entries followed by that with respect to entries of similar resolution.

The Analysed column shows the number of residues for which the sidechain conformation was

analysed, and the total number of residues.

Mol	Chain	Analysed	Rotameric	Outliers	Percentiles	
1	A	143/143 (100%)	143 (100%)	0	100	100
1	B	138/143 (96%)	136 (99%)	2 (1%)	67	59
All	All	281/286 (98%)	279 (99%)	2 (1%)	84	81

All (2) residues with a non-rotameric sidechain are listed below:

Mol	Chain	Res	Type
1	B	103	VAL
1	B	163	ILE

Sometimes sidechains can be flipped to improve hydrogen bonding and reduce clashes. All (2) such sidechains are listed below:

Mol	Chain	Res	Type
1	A	55	HIS
1	B	6	HIS

5.3.3 RNA [i](#)

There are no RNA molecules in this entry.

5.4 Non-standard residues in protein, DNA, RNA chains [i](#)

There are no non-standard protein/DNA/RNA residues in this entry.

5.5 Carbohydrates [i](#)

There are no monosaccharides in this entry.

5.6 Ligand geometry [i](#)

5 ligands are modelled in this entry.

In the following table, the Counts columns list the number of bonds (or angles) for which Mogul statistics could be retrieved, the number of bonds (or angles) that are observed in the model and the number of bonds (or angles) that are defined in the Chemical Component Dictionary. The Link column lists molecule types, if any, to which the group is linked. The Z score for a bond length (or angle) is the number of standard deviations the observed value is removed from the

expected value. A bond length (or angle) with $|Z| > 2$ is considered an outlier worth inspection. RMSZ is the root-mean-square of all Z scores of the bond lengths (or angles).

Mol	Type	Chain	Res	Link	Bond lengths			Bond angles		
					Counts	RMSZ	# $ Z > 2$	Counts	RMSZ	# $ Z > 2$
2	TOY	A	500	-	33,34,34	1.26	3 (9%)	43,50,50	1.20	4 (9%)
4	PAP	A	602	-	28,33,33	2.23	4 (14%)	37,52,52	1.58	5 (13%)
3	COA	A	600	-	43,50,50	2.04	8 (18%)	56,75,75	1.25	5 (8%)
3	COA	B	601	-	43,50,50	2.31	8 (18%)	56,75,75	1.38	8 (14%)
2	TOY	B	501	-	33,34,34	1.49	3 (9%)	43,50,50	1.47	8 (18%)

In the following table, the Chirals column lists the number of chiral outliers, the number of chiral centers analysed, the number of these observed in the model and the number defined in the Chemical Component Dictionary. Similar counts are reported in the Torsion and Rings columns. '-' means no outliers of that kind were identified.

Mol	Type	Chain	Res	Link	Chirals	Torsions	Rings
2	TOY	A	500	-	-	3/12/68/68	0/3/3/3
4	PAP	A	602	-	-	3/17/37/37	0/3/3/3
3	COA	A	600	-	-	6/44/64/64	0/3/3/3
3	COA	B	601	-	-	4/44/64/64	0/3/3/3
2	TOY	B	501	-	-	3/12/68/68	0/3/3/3

All (26) bond length outliers are listed below:

Mol	Chain	Res	Type	Atoms	Z	Observed(Å)	Ideal(Å)
3	B	601	COA	C2A-N3A	10.89	1.49	1.32
4	A	602	PAP	C2-N3	9.32	1.46	1.32
3	A	600	COA	C2A-N3A	8.86	1.45	1.32
3	B	601	COA	P3B-O3B	5.73	1.69	1.59
3	A	600	COA	C9P-N8P	4.56	1.44	1.33
2	B	501	TOY	C43-C33	4.40	1.59	1.53
4	A	602	PAP	P-O3'	3.94	1.66	1.59
3	B	601	COA	O4B-C1B	3.91	1.46	1.40
3	B	601	COA	C4A-N3A	3.39	1.40	1.35
3	A	600	COA	O4B-C1B	3.38	1.45	1.40
2	B	501	TOY	C31-C21	3.17	1.60	1.53
3	A	600	COA	P3B-O3B	2.73	1.64	1.59
2	A	500	TOY	C43-C33	2.68	1.56	1.53
3	B	601	COA	C2A-N1A	2.59	1.38	1.33
3	B	601	COA	C5P-N4P	2.54	1.39	1.33
3	B	601	COA	P2A-O3A	-2.53	1.56	1.59

Continued on next page...

Continued from previous page...

Mol	Chain	Res	Type	Atoms	Z	Observed(Å)	Ideal(Å)
4	A	602	PAP	PB-O3B	2.50	1.64	1.54
4	A	602	PAP	C2-N1	2.47	1.38	1.33
3	A	600	COA	P2A-O3A	-2.37	1.56	1.59
3	A	600	COA	OAP-CAP	2.37	1.46	1.42
3	A	600	COA	CEP-CBP	2.29	1.58	1.53
3	B	601	COA	OAP-CAP	2.28	1.46	1.42
2	A	500	TOY	O53-C13	2.16	1.47	1.41
2	A	500	TOY	C31-C41	-2.13	1.48	1.52
3	A	600	COA	C5P-N4P	2.09	1.38	1.33
2	B	501	TOY	O23-C23	2.03	1.48	1.43

All (30) bond angle outliers are listed below:

Mol	Chain	Res	Type	Atoms	Z	Observed(°)	Ideal(°)
3	B	601	COA	O4B-C1B-N9A	5.76	116.38	108.75
4	A	602	PAP	O4'-C1'-N9	5.35	115.83	108.75
3	A	600	COA	C1B-N9A-C4A	-4.24	119.20	126.64
2	B	501	TOY	O51-C51-C41	4.06	115.64	110.10
3	A	600	COA	O4B-C1B-N9A	3.66	113.60	108.75
4	A	602	PAP	C1'-N9-C4	-3.44	120.59	126.64
2	B	501	TOY	C63-C53-C43	3.30	121.12	113.02
2	B	501	TOY	C31-C41-C51	3.22	114.88	110.76
2	A	500	TOY	O51-C51-C41	3.12	114.35	110.10
3	A	600	COA	N3A-C2A-N1A	-2.90	124.74	128.67
2	B	501	TOY	O41-C41-C51	-2.86	104.14	110.08
2	B	501	TOY	O62-C62-C52	2.82	114.40	107.23
2	A	500	TOY	O62-C62-C52	2.81	114.38	107.23
3	A	600	COA	O3B-P3B-O7A	-2.59	100.11	109.33
2	A	500	TOY	C13-O53-C53	2.55	118.70	113.72
3	A	600	COA	O2A-P1A-O3A	2.53	114.10	107.27
4	A	602	PAP	N3-C2-N1	-2.47	125.32	128.67
4	A	602	PAP	C2'-C3'-C4'	-2.39	99.05	103.24
2	A	500	TOY	O51-C51-C61	2.38	110.65	106.07
4	A	602	PAP	C5-C6-N6	-2.32	116.77	120.31
2	B	501	TOY	O51-C51-C61	2.27	110.44	106.07
3	B	601	COA	C2B-C3B-C4B	-2.26	99.28	103.24
3	B	601	COA	CEP-CBP-CAP	2.24	112.58	108.77
2	B	501	TOY	C53-C43-C33	-2.12	108.32	110.67
3	B	601	COA	O2A-P1A-O3A	2.12	113.01	107.27
3	B	601	COA	N3A-C2A-N1A	-2.11	125.81	128.67
2	B	501	TOY	O11-C42-C52	2.11	112.58	107.23
3	B	601	COA	CAP-C9P-N8P	-2.07	112.55	116.48

Continued on next page...

Continued from previous page...

Mol	Chain	Res	Type	Atoms	Z	Observed(°)	Ideal(°)
3	B	601	COA	CEP-CBP-CDP	-2.05	105.12	109.20
3	B	601	COA	N6A-C6A-N1A	2.04	122.70	118.33

There are no chirality outliers.

All (19) torsion outliers are listed below:

Mol	Chain	Res	Type	Atoms
3	A	600	COA	CCP-O6A-P2A-O5A
3	B	601	COA	CCP-O6A-P2A-O3A
3	B	601	COA	CCP-O6A-P2A-O5A
2	A	500	TOY	O51-C11-O11-C42
2	B	501	TOY	O51-C11-O11-C42
2	B	501	TOY	C52-C42-O11-C11
2	A	500	TOY	C52-C42-O11-C11
2	A	500	TOY	C43-C53-C63-O63
3	A	600	COA	S1P-C2P-C3P-N4P
3	A	600	COA	CCP-O6A-P2A-O3A
4	A	602	PAP	C5'-O5'-PA-O1A
3	B	601	COA	P2A-O3A-P1A-O1A
3	B	601	COA	P2A-O3A-P1A-O2A
2	B	501	TOY	C43-C53-C63-O63
4	A	602	PAP	C3'-O3'-P-O2
3	A	600	COA	P2A-O3A-P1A-O1A
3	A	600	COA	C6P-C7P-N8P-C9P
3	A	600	COA	P2A-O3A-P1A-O2A
4	A	602	PAP	C4'-C5'-O5'-PA

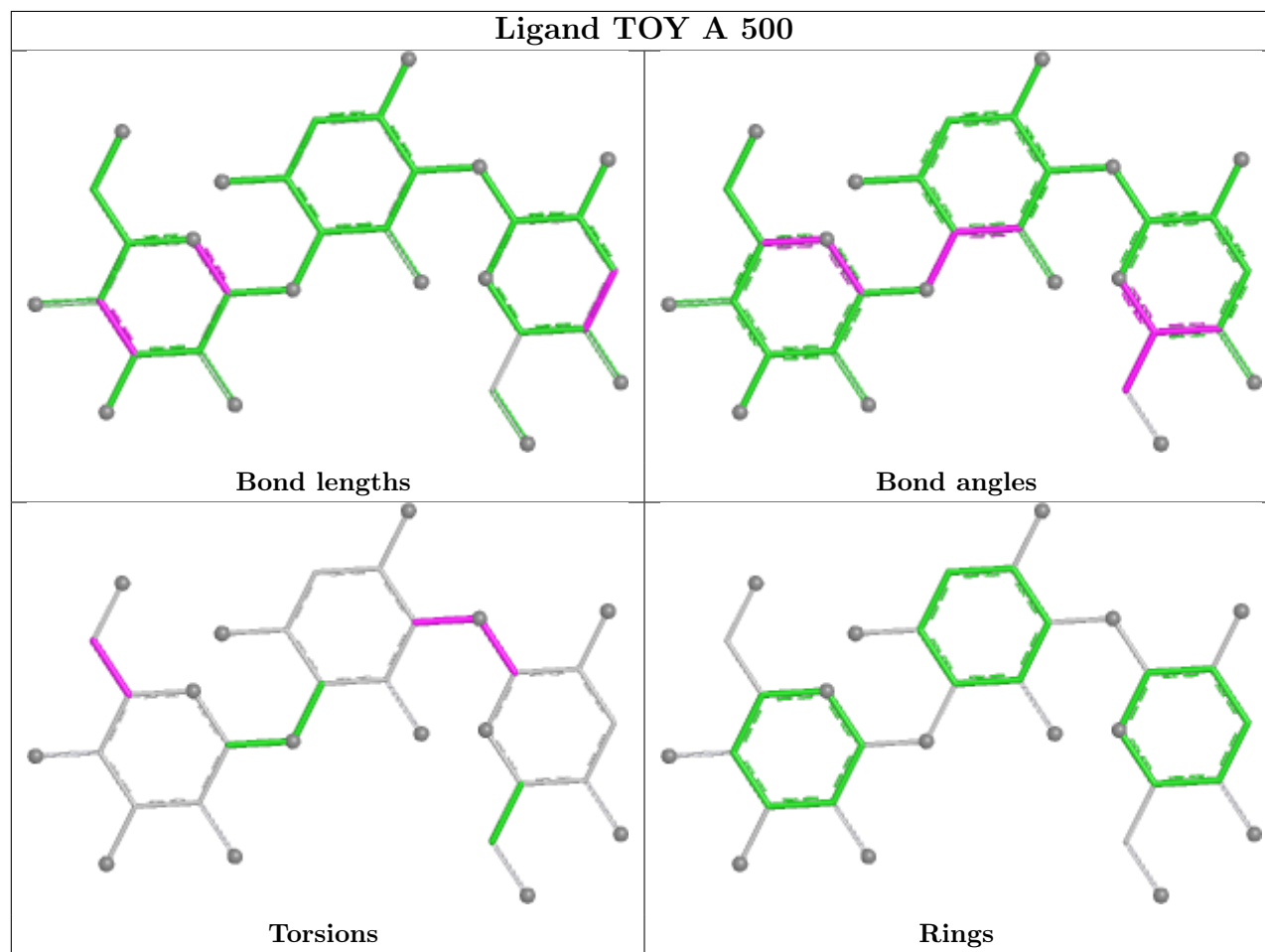
There are no ring outliers.

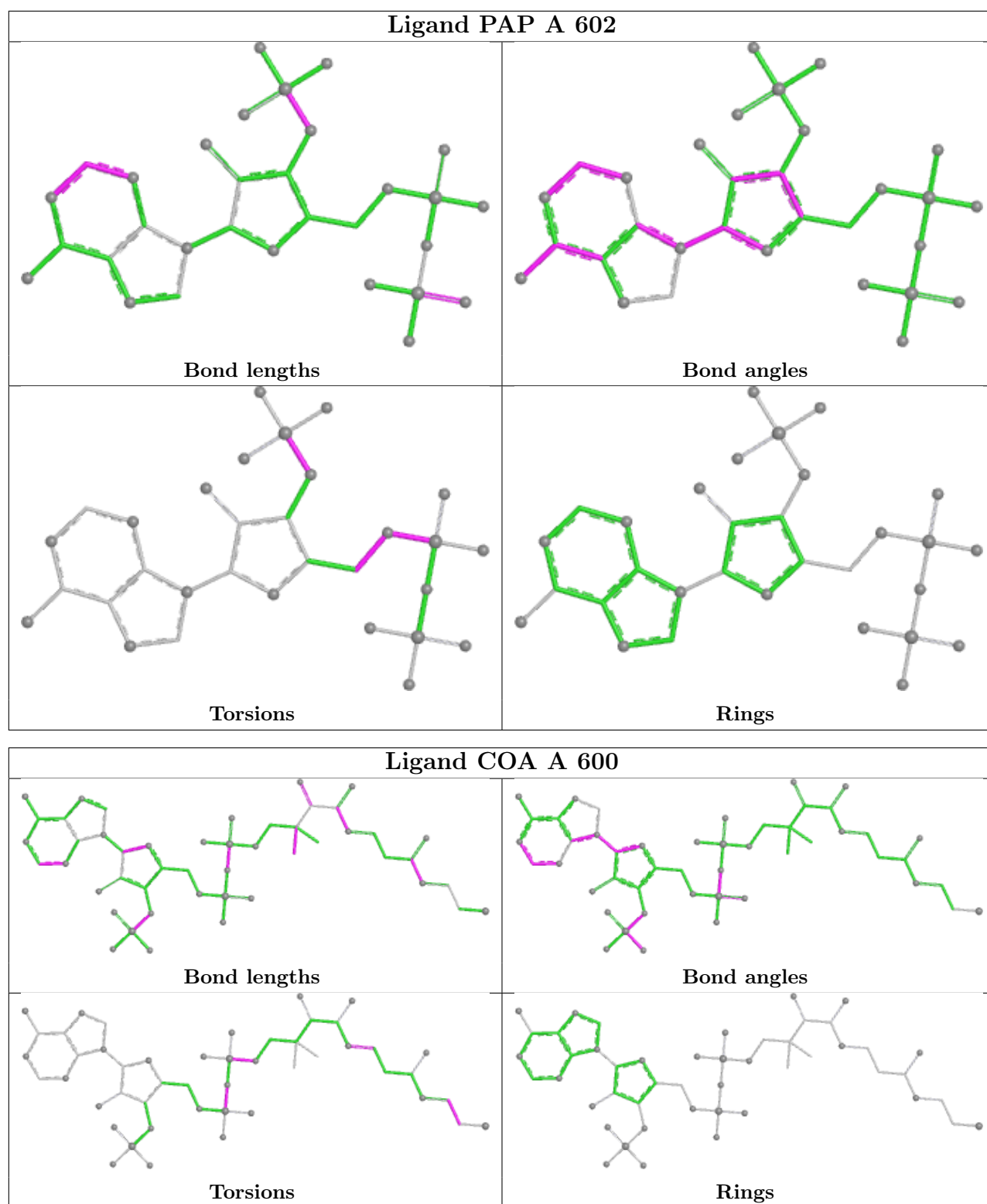
3 monomers are involved in 4 short contacts:

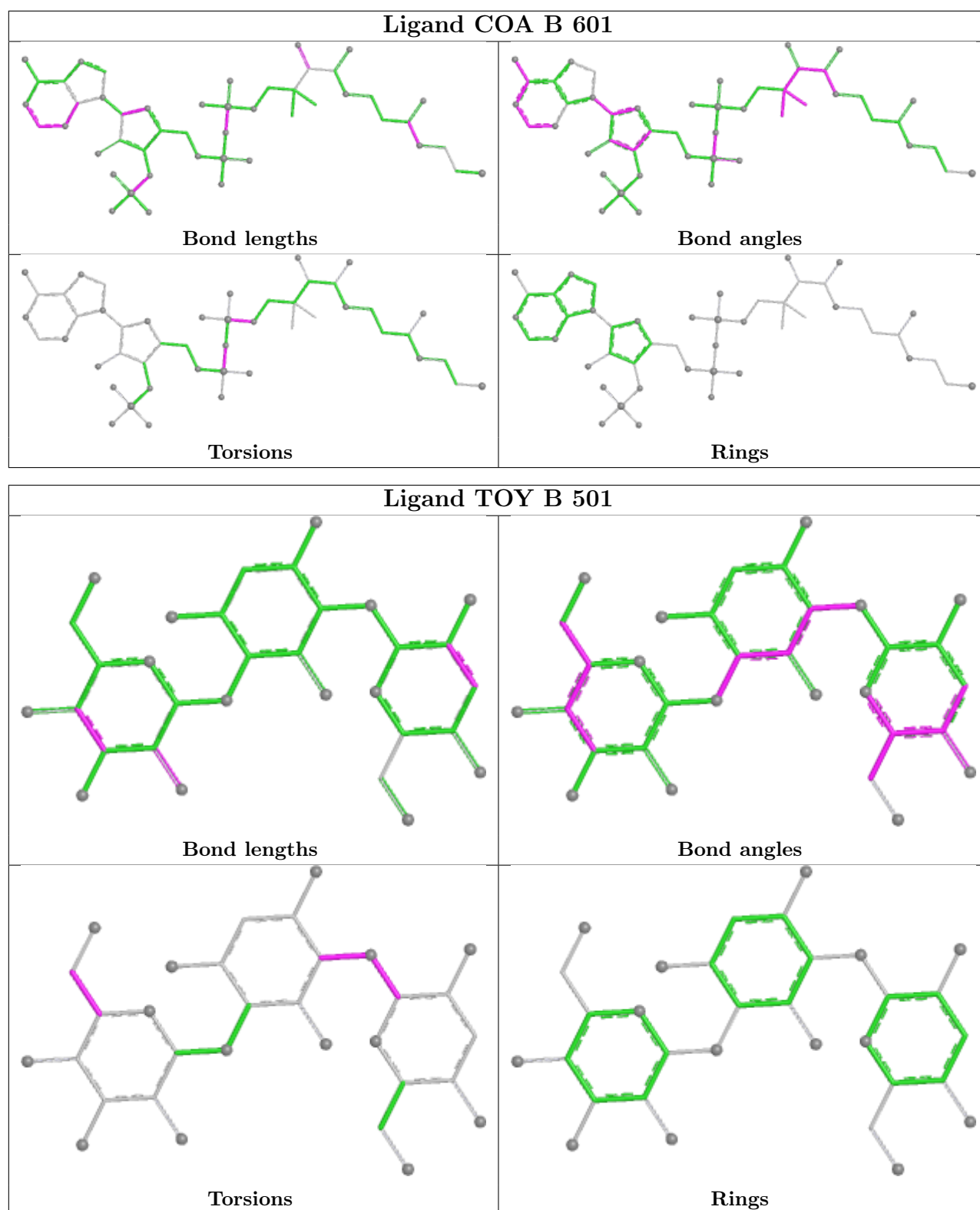
Mol	Chain	Res	Type	Clashes	Symm-Clashes
4	A	602	PAP	2	0
3	A	600	COA	1	0
3	B	601	COA	1	0

The following is a two-dimensional graphical depiction of Mogul quality analysis of bond lengths, bond angles, torsion angles, and ring geometry for all instances of the Ligand of Interest. In addition, ligands with molecular weight > 250 and outliers as shown on the validation Tables will also be included. For torsion angles, if less than 5% of the Mogul distribution of torsion angles is within 10 degrees of the torsion angle in question, then that torsion angle is considered an outlier. Any bond that is central to one or more torsion angles identified as an outlier by Mogul will be highlighted in the graph. For rings, the root-mean-square deviation (RMSD) between the ring

in question and similar rings identified by Mogul is calculated over all ring torsion angles. If the average RMSD is greater than 60 degrees and the minimal RMSD between the ring in question and any Mogul-identified rings is also greater than 60 degrees, then that ring is considered an outlier. The outliers are highlighted in purple. The color gray indicates Mogul did not find sufficient equivalents in the CSD to analyse the geometry.







5.7 Other polymers [\(i\)](#)

There are no such residues in this entry.

5.8 Polymer linkage issues

There are no chain breaks in this entry.

6 Fit of model and data [i](#)

6.1 Protein, DNA and RNA chains [i](#)

In the following table, the column labelled ‘#RSRZ > 2’ contains the number (and percentage) of RSRZ outliers, followed by percent RSRZ outliers for the chain as percentile scores relative to all X-ray entries and entries of similar resolution. The OWAB column contains the minimum, median, 95th percentile and maximum values of the occupancy-weighted average B-factor per residue. The column labelled ‘Q < 0.9’ lists the number of (and percentage) of residues with an average occupancy less than 0.9.

Mol	Chain	Analysed	<RSRZ>	#RSRZ>2	OWAB(Å ²)	Q<0.9
1	A	181/181 (100%)	-0.07	7 (3%) 39 33	12, 16, 35, 54	0
1	B	176/181 (97%)	0.21	14 (7%) 12 9	12, 18, 38, 50	0
All	All	357/362 (98%)	0.07	21 (5%) 22 17	12, 17, 39, 54	0

All (21) RSRZ outliers are listed below:

Mol	Chain	Res	Type	RSRZ
1	B	120	ALA	5.3
1	B	55	HIS	4.8
1	B	6	HIS	4.1
1	B	121	ARG	4.0
1	A	121	ARG	4.0
1	B	162	ASP	3.5
1	B	94	ARG	3.5
1	A	162	ASP	3.4
1	B	17	ASP	3.3
1	A	34	GLY	3.0
1	A	125	LEU	2.8
1	B	54	HIS	2.8
1	B	19	GLU	2.6
1	B	124	ARG	2.4
1	B	119	SER	2.3
1	B	38	GLU	2.3
1	A	1	MET	2.2
1	A	33	ALA	2.2
1	B	81	VAL	2.1
1	B	56	GLY	2.1
1	A	124	ARG	2.0

6.2 Non-standard residues in protein, DNA, RNA chains [i](#)

There are no non-standard protein/DNA/RNA residues in this entry.

6.3 Carbohydrates [i](#)

There are no monosaccharides in this entry.

6.4 Ligands [i](#)

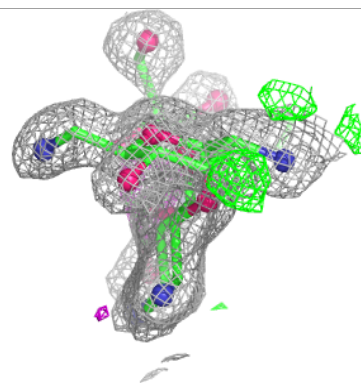
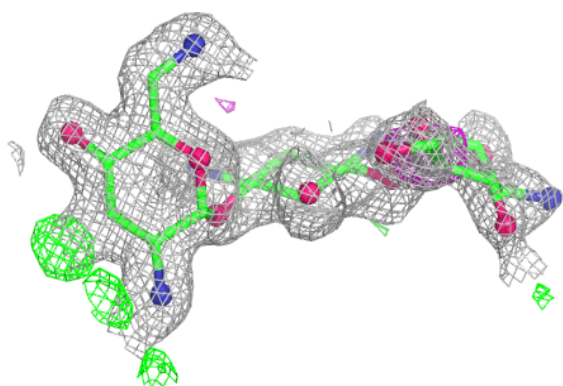
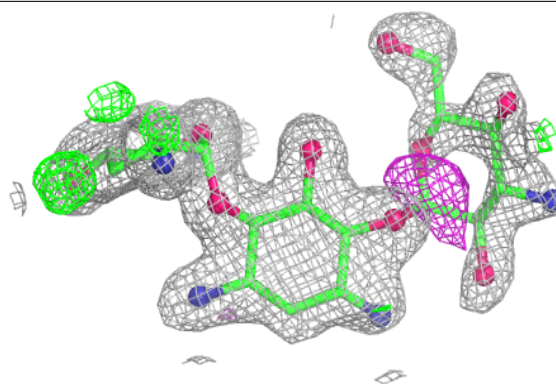
In the following table, the Atoms column lists the number of modelled atoms in the group and the number defined in the chemical component dictionary. The B-factors column lists the minimum, median, 95th percentile and maximum values of B factors of atoms in the group. The column labelled 'Q< 0.9' lists the number of atoms with occupancy less than 0.9.

Mol	Type	Chain	Res	Atoms	RSCC	RSR	B-factors(Å ²)	Q<0.9
2	TOY	A	500	32/32	0.72	0.21	24,34,48,50	0
2	TOY	B	501	32/32	0.74	0.24	24,30,43,46	0
4	PAP	A	602	31/31	0.77	0.27	39,47,64,64	0
3	COA	B	601	48/48	0.78	0.28	23,35,71,71	0
3	COA	A	600	48/48	0.92	0.12	16,25,39,41	0

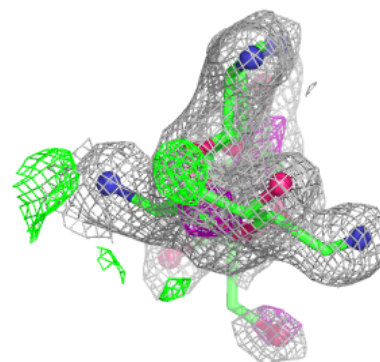
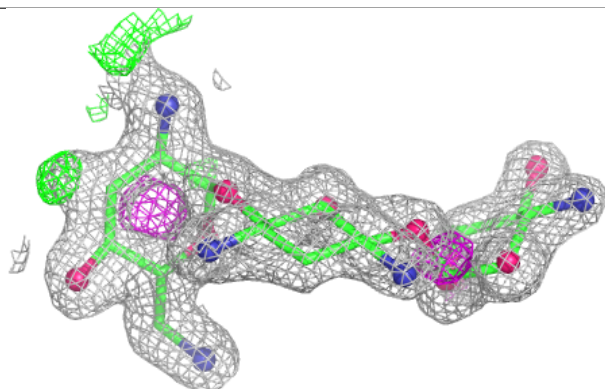
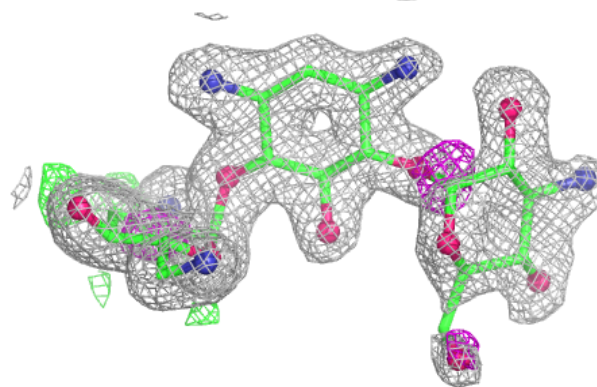
The following is a graphical depiction of the model fit to experimental electron density of all instances of the Ligand of Interest. In addition, ligands with molecular weight > 250 and outliers as shown on the geometry validation Tables will also be included. Each fit is shown from different orientation to approximate a three-dimensional view.

Electron density around TOY A 500:

$2mF_o-DF_c$ (at 0.7 rmsd) in gray
 mF_o-DF_c (at 3 rmsd) in purple (negative)
and green (positive)

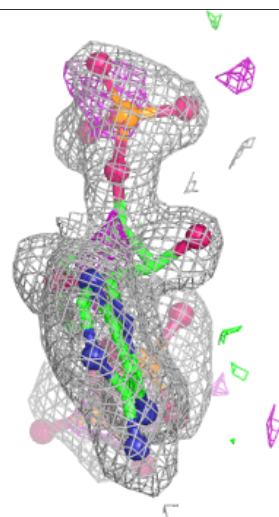
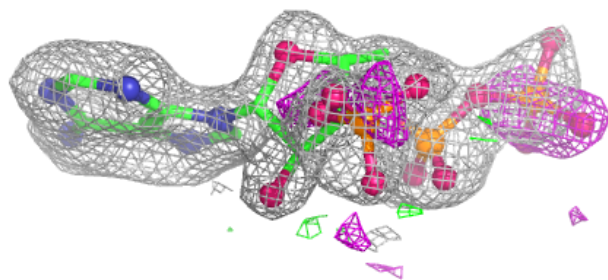
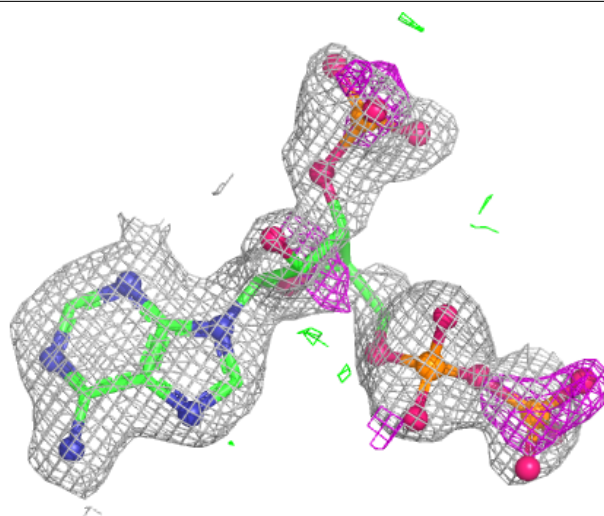
**Electron density around TOY B 501:**

$2mF_o-DF_c$ (at 0.7 rmsd) in gray
 mF_o-DF_c (at 3 rmsd) in purple (negative)
and green (positive)



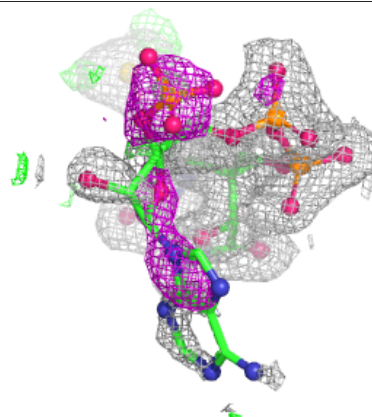
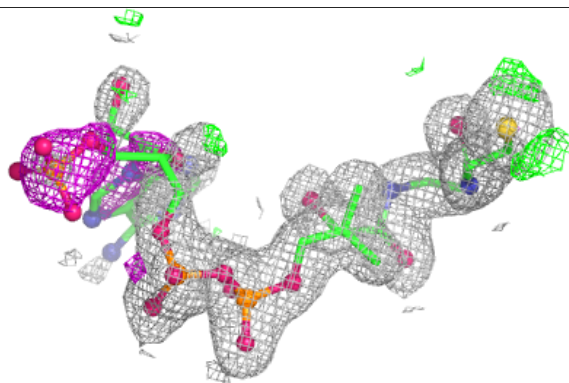
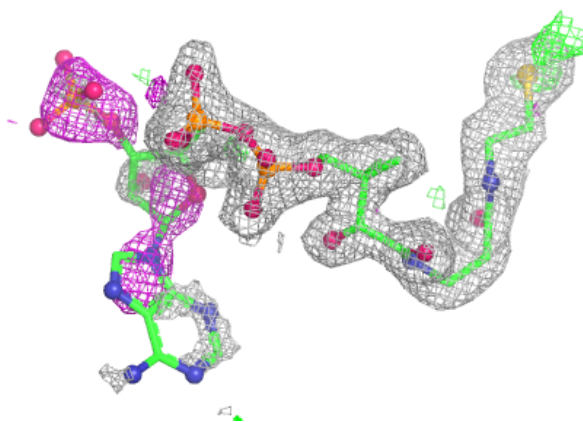
Electron density around PAP A 602:

$2mF_o-DF_c$ (at 0.7 rmsd) in gray
 mF_o-DF_c (at 3 rmsd) in purple (negative)
and green (positive)

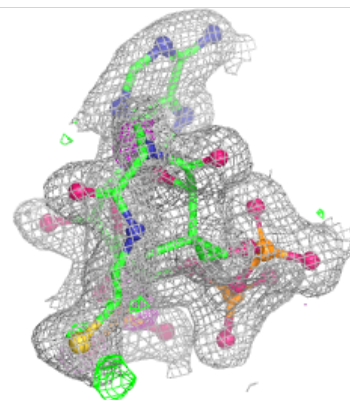
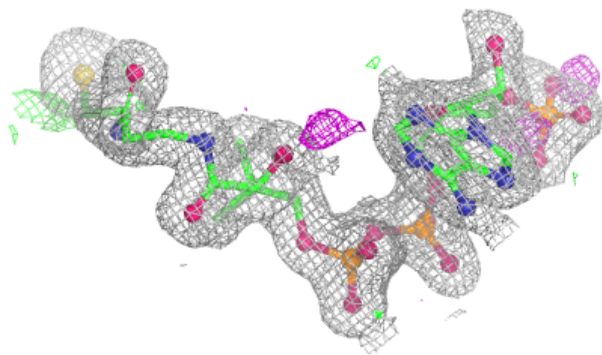
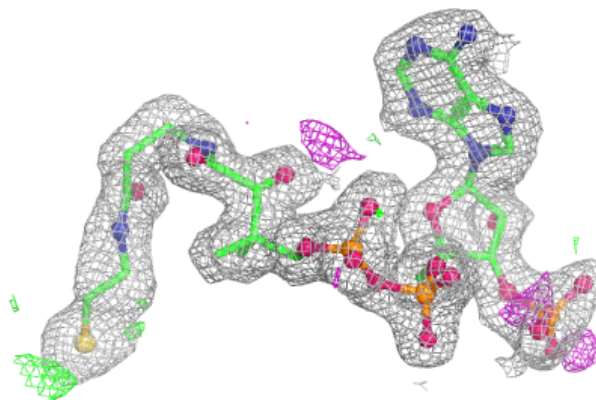


Electron density around COA B 601:

$2mF_o-DF_c$ (at 0.7 rmsd) in gray
 mF_o-DF_c (at 3 rmsd) in purple (negative)
and green (positive)

**Electron density around COA A 600:**

$2mF_o-DF_c$ (at 0.7 rmsd) in gray
 mF_o-DF_c (at 3 rmsd) in purple (negative)
and green (positive)



6.5 Other polymers [i](#)

There are no such residues in this entry.