



# Full wwPDB X-ray Structure Validation Report ⓘ

Jun 13, 2024 – 08:48 AM EDT

PDB ID : 1MD9  
Title : CRYSTAL STRUCTURE OF DhbE IN COMPLEX WITH DHB AND AMP  
Authors : May, J.J.; Kessler, N.; Marahiel, M.A.; Stubbs, M.T.  
Deposited on : 2002-08-07  
Resolution : 2.80 Å(reported)

This is a Full wwPDB X-ray Structure Validation Report for a publicly released PDB entry.

We welcome your comments at [validation@mail.wwpdb.org](mailto:validation@mail.wwpdb.org)

A user guide is available at

<https://www.wwpdb.org/validation/2017/XrayValidationReportHelp>

with specific help available everywhere you see the ⓘ symbol.

The types of validation reports are described at

<http://www.wwpdb.org/validation/2017/FAQs#types>.

---

The following versions of software and data (see [references ⓘ](#)) were used in the production of this report:

MolProbity : 4.02b-467  
Mogul : 1.8.5 (274361), CSD as541be (2020)  
Xtrriage (Phenix) : **NOT EXECUTED**  
EDS : **NOT EXECUTED**  
buster-report : 1.1.7 (2018)  
Percentile statistics : 20191225.v01 (using entries in the PDB archive December 25th 2019)  
Ideal geometry (proteins) : Engh & Huber (2001)  
Ideal geometry (DNA, RNA) : Parkinson et al. (1996)  
Validation Pipeline (wwPDB-VP) : 2.36.2

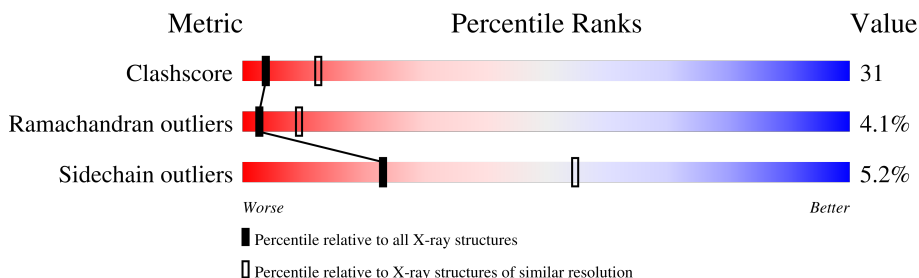
# 1 Overall quality at a glance

The following experimental techniques were used to determine the structure:

*X-RAY DIFFRACTION*

The reported resolution of this entry is 2.80 Å.

Percentile scores (ranging between 0-100) for global validation metrics of the entry are shown in the following graphic. The table shows the number of entries on which the scores are based.



Metric	Whole archive (#Entries)	Similar resolution (#Entries, resolution range(Å))
Clashscore	141614	3569 (2.80-2.80)
Ramachandran outliers	138981	3498 (2.80-2.80)
Sidechain outliers	138945	3500 (2.80-2.80)

The table below summarises the geometric issues observed across the polymeric chains and their fit to the electron density. The red, orange, yellow and green segments of the lower bar indicate the fraction of residues that contain outliers for  $\geq 3$ , 2, 1 and 0 types of geometric quality criteria respectively. A grey segment represents the fraction of residues that are not modelled. The numeric value for each fraction is indicated below the corresponding segment, with a dot representing fractions  $\leq 5\%$ .

Note EDS was not executed.

Mol	Chain	Length	Quality of chain
1	A	539	

The following table lists non-polymeric compounds, carbohydrate monomers and non-standard residues in protein, DNA, RNA chains that are outliers for geometric or electron-density-fit criteria:

Mol	Type	Chain	Res	Chirality	Geometry	Clashes	Electron density
2	AMP	A	600	-	-	X	-

## 2 Entry composition [i](#)

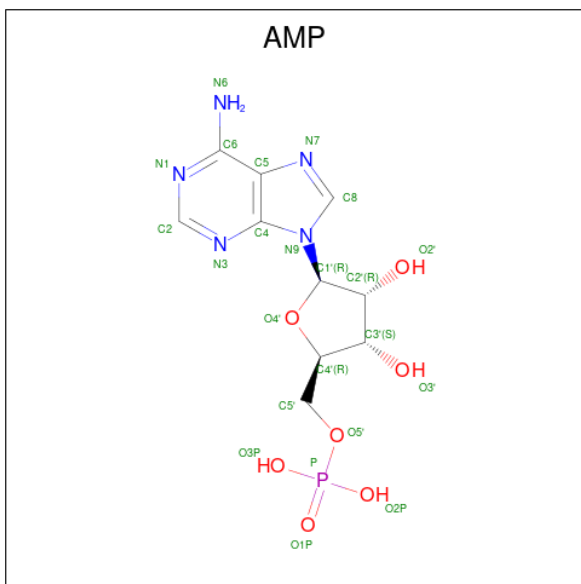
There are 3 unique types of molecules in this entry. The entry contains 4232 atoms, of which 0 are hydrogens and 0 are deuteriums.

In the tables below, the ZeroOcc column contains the number of atoms modelled with zero occupancy, the AltConf column contains the number of residues with at least one atom in alternate conformation and the Trace column contains the number of residues modelled with at most 2 atoms.

- Molecule 1 is a protein called 2,3-dihydroxybenzoate-AMP ligase.

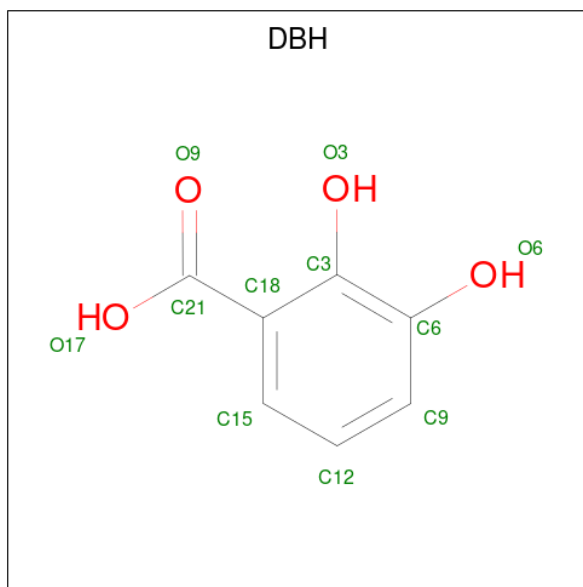
Mol	Chain	Residues	Atoms						ZeroOcc	AltConf	Trace
			Total	C	N	O	S	Se			
1	A	536	4198	2672	726	786	6	8	0	0	0

- Molecule 2 is ADENOSINE MONOPHOSPHATE (three-letter code: AMP) (formula: C<sub>10</sub>H<sub>14</sub>N<sub>5</sub>O<sub>7</sub>P).



Mol	Chain	Residues	Atoms					ZeroOcc	AltConf
			Total	C	N	O	P		
2	A	1	23	10	5	7	1	0	0

- Molecule 3 is 2,3-DIHYDROXY-BENZOIC ACID (three-letter code: DBH) (formula: C<sub>7</sub>H<sub>6</sub>O<sub>4</sub>).



Mol	Chain	Residues	Atoms			ZeroOcc	AltConf
3	A	1	Total	C	O	0	0
			11	7	4		



## 4 Data and refinement statistics

Xtriage (Phenix) and EDS were not executed - this section is therefore incomplete.

Property	Value	Source
Space group	P 31	Depositor
Cell constants a, b, c, $\alpha$ , $\beta$ , $\gamma$	66.90Å 66.90Å 114.80Å 90.00° 90.00° 120.00°	Depositor
Resolution (Å)	100.00 – 2.80	Depositor
% Data completeness (in resolution range)	(Not available) (100.00-2.80)	Depositor
$R_{merge}$	(Not available)	Depositor
$R_{sym}$	(Not available)	Depositor
Refinement program	CNS	Depositor
R, $R_{free}$	0.232 , 0.288	Depositor
Estimated twinning fraction	No twinning to report.	Xtriage
Total number of atoms	4232	wwPDB-VP
Average B, all atoms (Å <sup>2</sup> )	34.0	wwPDB-VP

## 5 Model quality [i](#)

### 5.1 Standard geometry [i](#)

Bond lengths and bond angles in the following residue types are not validated in this section: AMP, DBH

The Z score for a bond length (or angle) is the number of standard deviations the observed value is removed from the expected value. A bond length (or angle) with  $|Z| > 5$  is considered an outlier worth inspection. RMSZ is the root-mean-square of all Z scores of the bond lengths (or angles).

Mol	Chain	Bond lengths		Bond angles	
		RMSZ	# Z  >5	RMSZ	# Z  >5
1	A	0.45	0/4289	0.69	2/5806 (0.0%)

There are no bond length outliers.

All (2) bond angle outliers are listed below:

Mol	Chain	Res	Type	Atoms	Z	Observed(°)	Ideal(°)
1	A	194	THR	N-CA-C	-5.84	95.22	111.00
1	A	193	SER	N-CA-C	5.60	126.13	111.00

There are no chirality outliers.

There are no planarity outliers.

### 5.2 Too-close contacts [i](#)

In the following table, the Non-H and H(model) columns list the number of non-hydrogen atoms and hydrogen atoms in the chain respectively. The H(added) column lists the number of hydrogen atoms added and optimized by MolProbity. The Clashes column lists the number of clashes within the asymmetric unit, whereas Symm-Clashes lists symmetry-related clashes.

Mol	Chain	Non-H	H(model)	H(added)	Clashes	Symm-Clashes
1	A	4198	0	4161	253	0
2	A	23	0	12	13	0
3	A	11	0	6	1	0
All	All	4232	0	4179	257	0

The all-atom clashscore is defined as the number of clashes found per 1000 atoms (including hydrogen atoms). The all-atom clashscore for this structure is 31.

All (257) close contacts within the same asymmetric unit are listed below, sorted by their clash

magnitude.

Atom-1	Atom-2	Interatomic distance (Å)	Clash overlap (Å)
2:A:600:AMP:N9	2:A:600:AMP:C1'	1.69	1.53
1:A:191:GLY:HA2	2:A:600:AMP:O2P	1.27	1.27
1:A:36:ALA:HA	1:A:54:ARG:NH1	1.75	1.01
1:A:433:ILE:HD12	1:A:460:MSE:HE2	1.52	0.92
1:A:188:GLN:HE21	1:A:189:LEU:H	1.18	0.91
1:A:193:SER:HB2	1:A:523:LYS:HD2	1.53	0.88
1:A:211:LEU:O	1:A:215:VAL:HG23	1.74	0.88
1:A:14:GLU:HB3	1:A:18:LYS:HE3	1.56	0.86
1:A:419:ARG:N	1:A:419:ARG:HD3	1.92	0.82
1:A:460:MSE:HE3	1:A:472:SER:HB2	1.62	0.81
1:A:268:ILE:HG23	1:A:273:VAL:HG22	1.65	0.79
1:A:34:ARG:HD2	1:A:38:TYR:OH	1.81	0.79
1:A:328:GLN:HB2	1:A:340:THR:HG23	1.63	0.79
1:A:419:ARG:HD3	1:A:419:ARG:H	1.48	0.79
1:A:43:ALA:HB2	1:A:53:TYR:CD1	2.19	0.78
1:A:36:ALA:HA	1:A:54:ARG:HH12	1.49	0.77
1:A:355:LYS:HD3	1:A:422:TYR:CE1	2.19	0.77
1:A:318:VAL:HG21	1:A:326:LEU:HB2	1.64	0.77
1:A:215:VAL:HG13	1:A:220:LEU:HB2	1.67	0.76
1:A:353:GLN:HG2	1:A:425:VAL:H	1.49	0.76
1:A:428:ARG:HH22	2:A:600:AMP:P	2.09	0.75
2:A:600:AMP:C1'	2:A:600:AMP:C8	2.69	0.75
1:A:106:LEU:HD23	1:A:516:GLY:HA3	1.67	0.74
1:A:184:VAL:HA	1:A:203:THR:HG22	1.69	0.74
1:A:428:ARG:NH2	2:A:600:AMP:O1P	2.21	0.73
1:A:278:LEU:O	1:A:305:VAL:HA	1.92	0.70
2:A:600:AMP:N9	2:A:600:AMP:C2'	2.54	0.70
1:A:491:PHE:O	1:A:495:ARG:HG3	1.92	0.69
1:A:130:ASP:OD2	1:A:158:GLY:HA3	1.93	0.69
1:A:280:PRO:HD3	1:A:306:GLY:O	1.93	0.68
1:A:519:LYS:NZ	2:A:600:AMP:O1P	2.28	0.67
1:A:301:GLN:O	1:A:324:CYS:HB2	1.94	0.67
1:A:187:LEU:HD23	1:A:201:PRO:HA	1.79	0.65
1:A:454:ALA:CB	1:A:483:PRO:HG3	2.27	0.64
1:A:138:ARG:O	1:A:142:ARG:HG3	1.97	0.64
1:A:191:GLY:HA3	2:A:600:AMP:O2P	1.96	0.64
1:A:529:ILE:O	1:A:533:LEU:HG	1.98	0.64
1:A:373:VAL:HG13	1:A:377:GLU:HB2	1.78	0.64
1:A:119:GLU:HG3	1:A:148:LEU:HD21	1.81	0.63
1:A:334:GLU:HG2	1:A:409:TYR:CZ	2.33	0.63
1:A:479:ARG:HG2	1:A:479:ARG:O	1.98	0.63

*Continued on next page...*



*Continued from previous page...*

Atom-1	Atom-2	Interatomic distance (Å)	Clash overlap (Å)
1:A:109:HIS:O	1:A:110:ARG:HD3	1.98	0.63
1:A:14:GLU:HB3	1:A:18:LYS:CE	2.29	0.62
1:A:101:LEU:HD11	1:A:184:VAL:O	1.98	0.62
1:A:174:VAL:O	1:A:176:LEU:HD22	1.98	0.62
1:A:433:ILE:HB	1:A:440:VAL:HB	1.81	0.62
1:A:491:PHE:CE2	1:A:495:ARG:HD2	2.34	0.62
1:A:419:ARG:H	1:A:419:ARG:CD	2.13	0.62
1:A:309:LYS:HD3	1:A:443:GLU:HG3	1.80	0.62
1:A:111:SER:HB3	1:A:143:GLN:HE21	1.64	0.62
1:A:188:GLN:HE21	1:A:189:LEU:N	1.93	0.62
1:A:208:ILE:HA	1:A:211:LEU:HD12	1.83	0.61
1:A:413:ASP:OD2	2:A:600:AMP:C2'	2.48	0.61
1:A:160:ALA:HB3	1:A:165:PRO:HG3	1.81	0.61
1:A:198:LYS:HE3	1:A:398:HIS:CG	2.35	0.61
1:A:471:ARG:HG3	1:A:504:ASP:OD2	2.00	0.61
1:A:239:SER:HA	1:A:241:PRO:O	2.01	0.61
1:A:336:LEU:HD12	1:A:337:VAL:N	2.16	0.60
1:A:234:HIS:CD2	1:A:236:TYR:H	2.20	0.60
1:A:140:LEU:O	1:A:143:GLN:HB2	2.01	0.60
1:A:30:LEU:HD11	1:A:248:TYR:HD1	1.65	0.60
1:A:479:ARG:O	1:A:480:ASP:CB	2.49	0.60
1:A:497:LEU:HD13	1:A:501:LYS:HB2	1.85	0.59
1:A:227:LEU:HD11	1:A:256:SER:HB2	1.85	0.58
1:A:360:TYR:CD1	1:A:360:TYR:N	2.71	0.58
1:A:415:VAL:HG12	1:A:425:VAL:HA	1.86	0.58
1:A:434:ASN:O	1:A:470:GLU:HB2	2.04	0.57
1:A:136:ASP:OD1	1:A:138:ARG:HD2	2.05	0.57
1:A:246:VAL:HG11	1:A:253:VAL:HG23	1.86	0.57
1:A:278:LEU:HD11	1:A:286:TRP:CE3	2.39	0.57
1:A:373:VAL:CG1	1:A:377:GLU:HB2	2.33	0.57
1:A:236:TYR:HB3	1:A:237:PRO:CD	2.34	0.57
1:A:264:ALA:O	1:A:268:ILE:HG13	2.05	0.57
1:A:236:TYR:CZ	1:A:277:ALA:HB1	2.40	0.57
1:A:139:SER:O	1:A:143:GLN:HG3	2.05	0.56
2:A:600:AMP:C1'	2:A:600:AMP:C4	2.73	0.56
1:A:328:GLN:HB2	1:A:340:THR:CG2	2.36	0.56
1:A:488:LEU:O	1:A:491:PHE:HB3	2.06	0.56
1:A:188:GLN:NE2	1:A:189:LEU:H	1.96	0.56
1:A:456:HIS:HB3	1:A:477:ILE:O	2.05	0.56
1:A:292:SER:O	1:A:293:ARG:HB2	2.05	0.56
1:A:319:LYS:O	1:A:323:GLY:HA2	2.07	0.55

*Continued on next page...*

*Continued from previous page...*

Atom-1	Atom-2	Interatomic distance (Å)	Clash overlap (Å)
1:A:229:ALA:O	1:A:259:PRO:HG3	2.06	0.55
1:A:198:LYS:NZ	1:A:398:HIS:HB2	2.22	0.55
1:A:79:VAL:HA	1:A:103:VAL:HB	1.88	0.55
1:A:275:ILE:HA	1:A:302:VAL:O	2.06	0.55
1:A:30:LEU:HD11	1:A:248:TYR:CD1	2.41	0.55
1:A:88:PHE:CD2	1:A:232:MSE:HE3	2.42	0.55
1:A:40:ASP:HA	1:A:52:SER:HB2	1.90	0.54
1:A:454:ALA:HB1	1:A:483:PRO:HG3	1.89	0.54
1:A:472:SER:OG	1:A:503:PRO:HA	2.08	0.54
1:A:440:VAL:HG11	1:A:460:MSE:HE1	1.90	0.54
1:A:181:SER:O	1:A:204:HIS:HB2	2.08	0.54
1:A:238:LEU:CD1	1:A:244:LEU:HG	2.38	0.54
1:A:42:ILE:HD12	1:A:50:HIS:HB3	1.89	0.54
1:A:234:HIS:HD2	1:A:236:TYR:HB3	1.73	0.54
1:A:268:ILE:HG12	1:A:273:VAL:HG21	1.90	0.53
1:A:468:LEU:HD12	1:A:471:ARG:HD2	1.91	0.53
1:A:481:GLU:HA	1:A:481:GLU:OE1	2.08	0.53
1:A:273:VAL:HG23	1:A:300:LEU:HD12	1.91	0.52
1:A:291:SER:C	1:A:293:ARG:H	2.12	0.52
1:A:336:LEU:HD12	1:A:337:VAL:H	1.74	0.52
1:A:281:PRO:HG3	1:A:520:VAL:HG23	1.91	0.52
1:A:40:ASP:HA	1:A:52:SER:CB	2.40	0.52
1:A:310:PHE:CE2	1:A:315:ALA:HA	2.44	0.52
1:A:120:PHE:CE2	1:A:199:LEU:HD22	2.46	0.51
1:A:497:LEU:CD1	1:A:501:LYS:HB2	2.40	0.51
1:A:283:ALA:O	1:A:287:MSE:HG3	2.10	0.51
1:A:236:TYR:HB3	1:A:237:PRO:HD3	1.91	0.51
1:A:350:VAL:HG12	1:A:350:VAL:O	2.11	0.51
1:A:130:ASP:HB2	1:A:138:ARG:NH2	2.25	0.51
1:A:81:GLN:HG2	1:A:81:GLN:O	2.10	0.51
1:A:365:VAL:HG21	1:A:417:LEU:HG	1.93	0.51
1:A:479:ARG:HG3	1:A:479:ARG:HH11	1.75	0.51
1:A:335:GLY:HA3	1:A:388:THR:HA	1.92	0.50
1:A:88:PHE:O	1:A:92:ILE:HG12	2.11	0.50
1:A:106:LEU:H	1:A:109:HIS:CE1	2.28	0.50
1:A:154:ILE:HB	1:A:163:PHE:CD2	2.47	0.50
1:A:419:ARG:N	1:A:419:ARG:CD	2.70	0.50
1:A:54:ARG:O	1:A:57:ASP:HB3	2.12	0.50
1:A:373:VAL:HG22	1:A:377:GLU:HG3	1.94	0.50
1:A:78:VAL:HG13	1:A:125:ALA:HB3	1.94	0.49
1:A:281:PRO:CG	1:A:520:VAL:HG23	2.42	0.49

*Continued on next page...*

*Continued from previous page...*

Atom-1	Atom-2	Interatomic distance (Å)	Clash overlap (Å)
1:A:43:ALA:HB2	1:A:53:TYR:CE1	2.47	0.49
1:A:263:ASP:O	1:A:267:LEU:HB2	2.11	0.49
1:A:471:ARG:HG3	1:A:471:ARG:HH11	1.77	0.49
1:A:360:TYR:N	1:A:360:TYR:HD1	2.11	0.49
1:A:350:VAL:O	1:A:350:VAL:CG1	2.60	0.49
1:A:460:MSE:HE3	1:A:472:SER:CB	2.39	0.49
1:A:461:VAL:HG21	1:A:525:LEU:HB2	1.95	0.49
1:A:190:SER:HG	1:A:198:LYS:H	1.57	0.48
1:A:213:ARG:HD3	1:A:357:MSE:O	2.13	0.48
1:A:479:ARG:O	1:A:480:ASP:HB2	2.12	0.48
1:A:215:VAL:HG11	1:A:249:ALA:HB2	1.95	0.48
1:A:455:VAL:HG22	1:A:476:ILE:CG2	2.43	0.48
1:A:57:ASP:OD2	1:A:97:ARG:NH2	2.42	0.48
1:A:160:ALA:HB2	1:A:165:PRO:HA	1.95	0.48
1:A:418:THR:HG22	1:A:422:TYR:O	2.14	0.48
1:A:454:ALA:HB3	1:A:483:PRO:HG3	1.94	0.48
1:A:87:GLU:HA	1:A:90:GLU:HG2	1.96	0.48
1:A:40:ASP:HA	1:A:52:SER:OG	2.14	0.48
1:A:120:PHE:CD2	1:A:199:LEU:HD22	2.49	0.48
1:A:289:ALA:O	1:A:293:ARG:HB3	2.14	0.48
1:A:489:LYS:HE2	1:A:503:PRO:O	2.14	0.48
1:A:111:SER:HB3	1:A:143:GLN:NE2	2.28	0.47
1:A:213:ARG:NH2	1:A:216:GLU:OE2	2.42	0.47
1:A:337:VAL:HB	1:A:357:MSE:HE2	1.96	0.47
1:A:289:ALA:O	1:A:291:SER:N	2.47	0.47
1:A:67:PHE:CZ	1:A:127:ILE:HD11	2.50	0.47
1:A:200:ILE:O	1:A:200:ILE:HG22	2.13	0.47
1:A:326:LEU:HD12	1:A:327:GLN:H	1.80	0.47
1:A:418:THR:CG2	1:A:422:TYR:HB2	2.45	0.47
1:A:444:GLU:OE1	1:A:501:LYS:NZ	2.45	0.47
1:A:19:ASN:ND2	1:A:360:TYR:HE2	2.12	0.46
1:A:293:ARG:HG2	1:A:293:ARG:HH11	1.79	0.46
1:A:416:ARG:O	1:A:416:ARG:HG3	2.15	0.46
1:A:417:LEU:CD2	1:A:423:ILE:HG12	2.45	0.46
1:A:44:ILE:HD13	1:A:89:PHE:CD1	2.50	0.46
1:A:220:LEU:HD11	1:A:241:PRO:CG	2.46	0.46
1:A:265:PHE:HB2	1:A:266:PRO:HD3	1.98	0.46
1:A:336:LEU:HD22	1:A:383:THR:OG1	2.15	0.46
1:A:218:CYS:SG	1:A:241:PRO:HD3	2.56	0.46
1:A:461:VAL:HG13	1:A:526:ARG:CG	2.45	0.46
1:A:310:PHE:O	1:A:311:SER:C	2.54	0.46

*Continued on next page...*

*Continued from previous page...*

Atom-1	Atom-2	Interatomic distance (Å)	Clash overlap (Å)
1:A:114:ILE:HG21	1:A:126:TYR:CZ	2.51	0.45
1:A:58:THR:O	1:A:61:ASP:N	2.49	0.45
1:A:393:TYR:CZ	1:A:394:LYS:HE3	2.51	0.45
1:A:142:ARG:NH2	1:A:161:GLU:OE1	2.32	0.45
1:A:238:LEU:HD12	1:A:244:LEU:HG	1.97	0.45
1:A:221:ASP:OD1	1:A:223:SER:N	2.48	0.45
1:A:418:THR:HG21	1:A:422:TYR:HB2	1.99	0.45
1:A:420:ASP:HB2	1:A:422:TYR:CD1	2.51	0.45
1:A:78:VAL:O	1:A:80:VAL:HG23	2.17	0.45
1:A:257:PRO:HD2	1:A:263:ASP:HB3	1.99	0.45
1:A:448:HIS:ND1	1:A:495:ARG:NH1	2.64	0.45
1:A:287:MSE:HE2	1:A:321:VAL:HG21	1.99	0.45
1:A:413:ASP:OD2	2:A:600:AMP:H2'	2.16	0.45
1:A:426:GLU:OE1	1:A:439:LYS:HE3	2.16	0.45
1:A:161:GLU:HB3	1:A:162:GLU:H	1.64	0.45
1:A:209:TYR:CZ	1:A:213:ARG:HG3	2.52	0.45
1:A:332:MSE:SE	1:A:411:THR:CG2	3.15	0.45
1:A:150:THR:O	1:A:152:LYS:HG3	2.17	0.44
1:A:164:LEU:HA	1:A:165:PRO:HD3	1.78	0.44
1:A:278:LEU:HD11	1:A:286:TRP:CD2	2.52	0.44
1:A:449:LEU:CD2	1:A:492:LEU:HD21	2.47	0.44
1:A:461:VAL:HG13	1:A:526:ARG:HG2	1.99	0.44
1:A:193:SER:HB2	1:A:523:LYS:CD	2.37	0.44
1:A:289:ALA:C	1:A:291:SER:H	2.20	0.44
1:A:329:VAL:HG22	1:A:339:TYR:CD2	2.53	0.44
1:A:186:PHE:CE1	1:A:188:GLN:HG2	2.52	0.44
1:A:381:LEU:HB2	1:A:415:VAL:HG22	1.99	0.44
1:A:67:PHE:HZ	1:A:127:ILE:HD11	1.83	0.44
1:A:95:LEU:CD2	1:A:100:ALA:HB3	2.48	0.44
1:A:435:ARG:HG2	1:A:435:ARG:HH11	1.83	0.44
1:A:512:PHE:O	1:A:514:GLN:HG3	2.18	0.44
1:A:280:PRO:HG2	1:A:308:ALA:HB3	1.99	0.43
1:A:341:ARG:C	1:A:343:ASP:H	2.21	0.43
1:A:358:SER:HB3	1:A:361:ASP:OD2	2.18	0.43
1:A:35:ALA:CB	1:A:57:ASP:HB2	2.48	0.43
1:A:477:ILE:HD13	1:A:511:SER:HA	1.98	0.43
1:A:35:ALA:HA	1:A:53:TYR:HB3	2.00	0.43
1:A:89:PHE:CE1	1:A:232:MSE:HE1	2.53	0.43
1:A:461:VAL:HG12	1:A:462:SER:O	2.19	0.43
1:A:414:ILE:HD12	1:A:429:ALA:HA	2.01	0.43
1:A:186:PHE:CD1	1:A:186:PHE:C	2.92	0.43

*Continued on next page...*

*Continued from previous page...*

Atom-1	Atom-2	Interatomic distance (Å)	Clash overlap (Å)
1:A:335:GLY:O	1:A:336:LEU:C	2.56	0.43
1:A:30:LEU:HD12	1:A:208:ILE:HD13	2.01	0.43
1:A:261:PRO:HB3	1:A:265:PHE:CE2	2.54	0.43
1:A:41:ARG:O	1:A:53:TYR:HD1	2.02	0.42
1:A:532:LYS:O	1:A:535:ALA:HB3	2.19	0.42
1:A:236:TYR:OH	1:A:277:ALA:HB1	2.19	0.42
1:A:291:SER:C	1:A:293:ARG:N	2.72	0.42
1:A:318:VAL:CG2	1:A:326:LEU:HB2	2.41	0.42
1:A:357:MSE:HE3	1:A:387:TYR:CE1	2.54	0.42
1:A:256:SER:HA	1:A:257:PRO:HD3	1.78	0.42
1:A:287:MSE:HE1	1:A:317:ARG:CB	2.50	0.42
1:A:296:ASP:OD2	1:A:298:SER:HB3	2.19	0.42
1:A:330:PHE:HB2	2:A:600:AMP:N6	2.33	0.42
1:A:354:GLY:O	1:A:422:TYR:HA	2.20	0.42
1:A:432:GLN:OE1	1:A:439:LYS:HE3	2.20	0.42
1:A:471:ARG:HH11	1:A:471:ARG:CG	2.33	0.42
1:A:88:PHE:CG	1:A:232:MSE:HE3	2.54	0.41
1:A:239:SER:C	1:A:241:PRO:O	2.59	0.41
1:A:284:MSE:CE	1:A:310:PHE:HE1	2.33	0.41
1:A:521:SER:O	1:A:524:ALA:HB3	2.20	0.41
1:A:70:LEU:HD12	1:A:70:LEU:HA	1.86	0.41
1:A:155:ILE:HA	1:A:164:LEU:O	2.20	0.41
1:A:225:VAL:CG1	1:A:273:VAL:HA	2.49	0.41
1:A:241:PRO:CD	1:A:304:GLN:HE22	2.34	0.41
1:A:406:ASP:OD1	1:A:406:ASP:N	2.52	0.41
1:A:264:ALA:O	1:A:268:ILE:N	2.51	0.41
1:A:336:LEU:HA	1:A:387:TYR:CE1	2.55	0.41
1:A:239:SER:C	1:A:241:PRO:C	2.79	0.41
1:A:440:VAL:HG11	1:A:460:MSE:CE	2.51	0.41
1:A:1:MSE:SE	1:A:7:PRO:HG3	2.70	0.41
1:A:190:SER:OG	1:A:198:LYS:N	2.34	0.41
1:A:194:THR:O	1:A:194:THR:HG22	2.21	0.41
1:A:230:LEU:HB2	1:A:237:PRO:HG3	2.03	0.41
1:A:371:ARG:O	1:A:372:ASP:C	2.57	0.41
1:A:461:VAL:CG1	1:A:526:ARG:HG2	2.51	0.41
1:A:30:LEU:C	1:A:30:LEU:HD23	2.42	0.41
1:A:360:TYR:HD1	1:A:360:TYR:H	1.68	0.40
1:A:404:THR:OG1	1:A:408:PHE:HB2	2.21	0.40
1:A:446:GLU:OE1	1:A:522:LYS:NZ	2.40	0.40
1:A:198:LYS:HZ2	1:A:398:HIS:HB2	1.86	0.40
1:A:272:LYS:HG2	1:A:299:SER:HB3	2.02	0.40

*Continued on next page...*

Continued from previous page...

Atom-1	Atom-2	Interatomic distance (Å)	Clash overlap (Å)
1:A:428:ARG:NH2	2:A:600:AMP:P	2.88	0.40
1:A:158:GLY:O	1:A:159:GLU:C	2.59	0.40
1:A:433:ILE:HD12	1:A:460:MSE:CE	2.35	0.40
1:A:477:ILE:HG13	1:A:512:PHE:CE2	2.56	0.40
1:A:40:ASP:HA	1:A:52:SER:HG	1.86	0.40
1:A:148:LEU:HA	1:A:149:PRO:HD2	1.90	0.40
1:A:307:GLY:HA2	3:A:601:DBH:HC15	2.03	0.40
1:A:391:GLY:N	1:A:403:PHE:CE2	2.90	0.40
1:A:403:PHE:CD1	1:A:403:PHE:N	2.90	0.40
1:A:437:GLY:O	1:A:438:GLU:HG2	2.21	0.40
1:A:465:ASP:OD2	1:A:471:ARG:NE	2.54	0.40

There are no symmetry-related clashes.

## 5.3 Torsion angles [i](#)

### 5.3.1 Protein backbone [i](#)

In the following table, the Percentiles column shows the percent Ramachandran outliers of the chain as a percentile score with respect to all X-ray entries followed by that with respect to entries of similar resolution.

The Analysed column shows the number of residues for which the backbone conformation was analysed, and the total number of residues.

Mol	Chain	Analysed	Favoured	Allowed	Outliers	Percentiles
1	A	534/539 (99%)	450 (84%)	62 (12%)	22 (4%)	<b>3</b> <b>9</b>

All (22) Ramachandran outliers are listed below:

Mol	Chain	Res	Type
1	A	194	THR
1	A	293	ARG
1	A	344	ASP
1	A	480	ASP
1	A	39	GLY
1	A	191	GLY
1	A	290	ALA
1	A	295	ASP
1	A	311	SER
1	A	336	LEU

Continued on next page...

*Continued from previous page...*

Mol	Chain	Res	Type
1	A	345	PRO
1	A	394	LYS
1	A	33	ASP
1	A	159	GLU
1	A	296	ASP
1	A	318	VAL
1	A	151	LEU
1	A	356	PRO
1	A	368	ASP
1	A	528	ALA
1	A	83	PRO
1	A	319	LYS

### 5.3.2 Protein sidechains [i](#)

In the following table, the Percentiles column shows the percent sidechain outliers of the chain as a percentile score with respect to all X-ray entries followed by that with respect to entries of similar resolution.

The Analysed column shows the number of residues for which the sidechain conformation was analysed, and the total number of residues.

Mol	Chain	Analysed	Rotameric	Outliers	Percentiles
1	A	443/438 (101%)	420 (95%)	23 (5%)	<b>23</b> 55

All (23) residues with a non-rotameric sidechain are listed below:

Mol	Chain	Res	Type
1	A	38	TYR
1	A	52	SER
1	A	67	PHE
1	A	97	ARG
1	A	106	LEU
1	A	130	ASP
1	A	138	ARG
1	A	188	GLN
1	A	196	LEU
1	A	213	ARG
1	A	252	ARG
1	A	267	LEU
1	A	285	VAL
1	A	292	SER

*Continued on next page...*

*Continued from previous page...*

Mol	Chain	Res	Type
1	A	295	ASP
1	A	299	SER
1	A	328	GLN
1	A	330	PHE
1	A	360	TYR
1	A	410	ARG
1	A	419	ARG
1	A	471	ARG
1	A	497	LEU

Sometimes sidechains can be flipped to improve hydrogen bonding and reduce clashes. All (8) such sidechains are listed below:

Mol	Chain	Res	Type
1	A	19	ASN
1	A	143	GLN
1	A	188	GLN
1	A	234	HIS
1	A	328	GLN
1	A	353	GLN
1	A	398	HIS
1	A	456	HIS

### 5.3.3 RNA [i](#)

There are no RNA molecules in this entry.

### 5.4 Non-standard residues in protein, DNA, RNA chains [i](#)

There are no non-standard protein/DNA/RNA residues in this entry.

### 5.5 Carbohydrates [i](#)

There are no monosaccharides in this entry.

### 5.6 Ligand geometry [i](#)

2 ligands are modelled in this entry.



In the following table, the Counts columns list the number of bonds (or angles) for which Mogul statistics could be retrieved, the number of bonds (or angles) that are observed in the model and the number of bonds (or angles) that are defined in the Chemical Component Dictionary. The Link column lists molecule types, if any, to which the group is linked. The Z score for a bond length (or angle) is the number of standard deviations the observed value is removed from the expected value. A bond length (or angle) with  $|Z| > 2$  is considered an outlier worth inspection. RMSZ is the root-mean-square of all Z scores of the bond lengths (or angles).

Mol	Type	Chain	Res	Link	Bond lengths			Bond angles		
					Counts	RMSZ	# Z  > 2	Counts	RMSZ	# Z  > 2
3	DBH	A	601	-	11,11,11	2.01	4 (36%)	15,15,15	1.23	2 (13%)
2	AMP	A	600	1	22,25,25	1.36	3 (13%)	25,38,38	1.94	7 (28%)

In the following table, the Chirals column lists the number of chiral outliers, the number of chiral centers analysed, the number of these observed in the model and the number defined in the Chemical Component Dictionary. Similar counts are reported in the Torsion and Rings columns. '-' means no outliers of that kind were identified.

Mol	Type	Chain	Res	Link	Chirals	Torsions	Rings
3	DBH	A	601	-	-	2/4/4/4	0/1/1/1
2	AMP	A	600	1	-	1/6/26/26	0/3/3/3

All (7) bond length outliers are listed below:

Mol	Chain	Res	Type	Atoms	Z	Observed(Å)	Ideal(Å)
3	A	601	DBH	O17-C21	4.31	1.43	1.30
2	A	600	AMP	O4'-C1'	2.59	1.44	1.41
2	A	600	AMP	C2-N3	2.50	1.36	1.32
3	A	601	DBH	C6-C3	2.33	1.42	1.40
3	A	601	DBH	O6-C6	2.10	1.40	1.36
2	A	600	AMP	C4-N3	2.06	1.38	1.35
3	A	601	DBH	O3-C3	2.01	1.41	1.37

All (9) bond angle outliers are listed below:

Mol	Chain	Res	Type	Atoms	Z	Observed(°)	Ideal(°)
2	A	600	AMP	N3-C2-N1	-5.16	120.61	128.68
2	A	600	AMP	P-O5'-C5'	3.69	128.45	118.30
2	A	600	AMP	C4-C5-N7	3.65	113.20	109.40
2	A	600	AMP	O2P-P-O5'	-3.30	97.96	106.73
3	A	601	DBH	O17-C21-C18	3.13	124.32	115.31
2	A	600	AMP	O4'-C4'-C5'	2.66	118.11	109.37
3	A	601	DBH	O17-C21-O9	-2.58	117.63	123.35
2	A	600	AMP	C2-N1-C6	2.24	122.58	118.75

Continued on next page...

*Continued from previous page...*

Mol	Chain	Res	Type	Atoms	Z	Observed(°)	Ideal(°)
2	A	600	AMP	O5'-P-O1P	2.13	112.44	106.47

There are no chirality outliers.

All (3) torsion outliers are listed below:

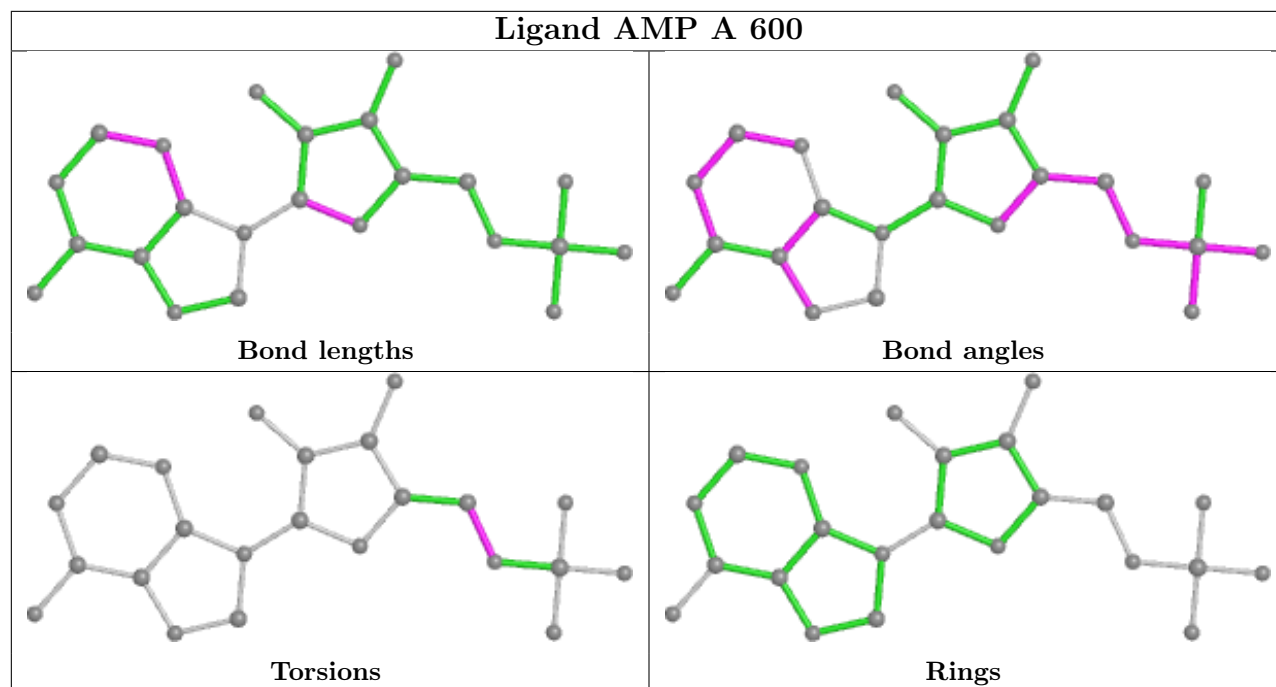
Mol	Chain	Res	Type	Atoms
2	A	600	AMP	C4'-C5'-O5'-P
3	A	601	DBH	C3-C18-C21-O17
3	A	601	DBH	C3-C18-C21-O9

There are no ring outliers.

2 monomers are involved in 14 short contacts:

Mol	Chain	Res	Type	Clashes	Symm-Clashes
3	A	601	DBH	1	0
2	A	600	AMP	13	0

The following is a two-dimensional graphical depiction of Mogul quality analysis of bond lengths, bond angles, torsion angles, and ring geometry for all instances of the Ligand of Interest. In addition, ligands with molecular weight > 250 and outliers as shown on the validation Tables will also be included. For torsion angles, if less than 5% of the Mogul distribution of torsion angles is within 10 degrees of the torsion angle in question, then that torsion angle is considered an outlier. Any bond that is central to one or more torsion angles identified as an outlier by Mogul will be highlighted in the graph. For rings, the root-mean-square deviation (RMSD) between the ring in question and similar rings identified by Mogul is calculated over all ring torsion angles. If the average RMSD is greater than 60 degrees and the minimal RMSD between the ring in question and any Mogul-identified rings is also greater than 60 degrees, then that ring is considered an outlier. The outliers are highlighted in purple. The color gray indicates Mogul did not find sufficient equivalents in the CSD to analyse the geometry.



## 5.7 Other polymers [i](#)

There are no such residues in this entry.

## 5.8 Polymer linkage issues [i](#)

There are no chain breaks in this entry.

## 6 Fit of model and data

### 6.1 Protein, DNA and RNA chains

EDS was not executed - this section is therefore empty.

### 6.2 Non-standard residues in protein, DNA, RNA chains

EDS was not executed - this section is therefore empty.

### 6.3 Carbohydrates

EDS was not executed - this section is therefore empty.

### 6.4 Ligands

EDS was not executed - this section is therefore empty.

### 6.5 Other polymers

EDS was not executed - this section is therefore empty.