



Full wwPDB X-ray Structure Validation Report ⓘ

Jun 13, 2024 – 11:46 AM EDT

PDB ID : 1MRO
Title : METHYL-COENZYME M REDUCTASE
Authors : Ermler, U.; Grabarse, W.
Deposited on : 1997-10-01
Resolution : 1.16 Å(reported)

This is a Full wwPDB X-ray Structure Validation Report for a publicly released PDB entry.

We welcome your comments at validation@mail.wwpdb.org

A user guide is available at

<https://www.wwpdb.org/validation/2017/XrayValidationReportHelp>

with specific help available everywhere you see the ⓘ symbol.

The types of validation reports are described at

<http://www.wwpdb.org/validation/2017/FAQs#types>.

The following versions of software and data (see [references ⓘ](#)) were used in the production of this report:

MolProbity : 4.02b-467
Mogul : 1.8.5 (274361), CSD as541be (2020)
Xtrriage (Phenix) : **NOT EXECUTED**
EDS : **NOT EXECUTED**
buster-report : 1.1.7 (2018)
Percentile statistics : 20191225.v01 (using entries in the PDB archive December 25th 2019)
Ideal geometry (proteins) : Engh & Huber (2001)
Ideal geometry (DNA, RNA) : Parkinson et al. (1996)
Validation Pipeline (wwPDB-VP) : 2.36.2

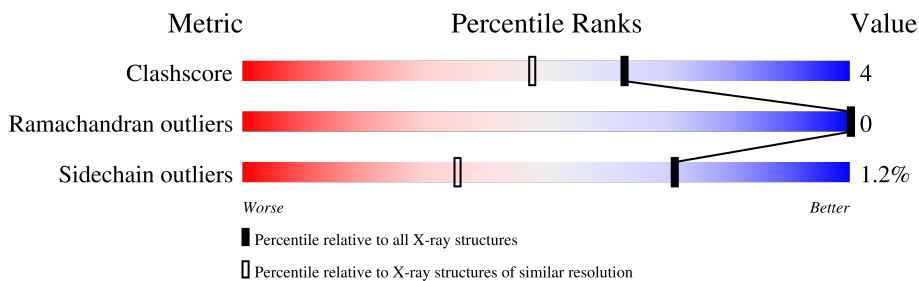
1 Overall quality at a glance

The following experimental techniques were used to determine the structure:

X-RAY DIFFRACTION

The reported resolution of this entry is 1.16 Å.

Percentile scores (ranging between 0-100) for global validation metrics of the entry are shown in the following graphic. The table shows the number of entries on which the scores are based.



Metric	Whole archive (#Entries)	Similar resolution (#Entries, resolution range(Å))
Clashscore	141614	1832 (1.20-1.12)
Ramachandran outliers	138981	1768 (1.20-1.12)
Sidechain outliers	138945	1768 (1.20-1.12)

The table below summarises the geometric issues observed across the polymeric chains and their fit to the electron density. The red, orange, yellow and green segments of the lower bar indicate the fraction of residues that contain outliers for ≥ 3 , 2, 1 and 0 types of geometric quality criteria respectively. A grey segment represents the fraction of residues that are not modelled. The numeric value for each fraction is indicated below the corresponding segment, with a dot representing fractions $\leq 5\%$

Note EDS was not executed.

Mol	Chain	Length	Quality of chain
1	A	548	
1	D	548	
2	B	442	
2	E	442	
3	C	247	
3	F	247	

2 Entry composition [i](#)

There are 10 unique types of molecules in this entry. The entry contains 21217 atoms, of which 0 are hydrogens and 0 are deuteriums.

In the tables below, the ZeroOcc column contains the number of atoms modelled with zero occupancy, the AltConf column contains the number of residues with at least one atom in alternate conformation and the Trace column contains the number of residues modelled with at most 2 atoms.

- Molecule 1 is a protein called METHYL-COENZYME M REDUCTASE.

Mol	Chain	Residues	Atoms					ZeroOcc	AltConf	Trace
			Total	C	N	O	S			
1	A	548	Total	C	N	O	S	19	15	0
			4293	2717	717	839	20			
1	D	548	Total	C	N	O	S	16	13	0
			4290	2718	716	836	20			

- Molecule 2 is a protein called METHYL-COENZYME M REDUCTASE.

Mol	Chain	Residues	Atoms					ZeroOcc	AltConf	Trace
			Total	C	N	O	S			
2	B	442	Total	C	N	O	S	17	13	0
			3352	2123	553	655	21			
2	E	442	Total	C	N	O	S	10	7	0
			3328	2104	552	652	20			

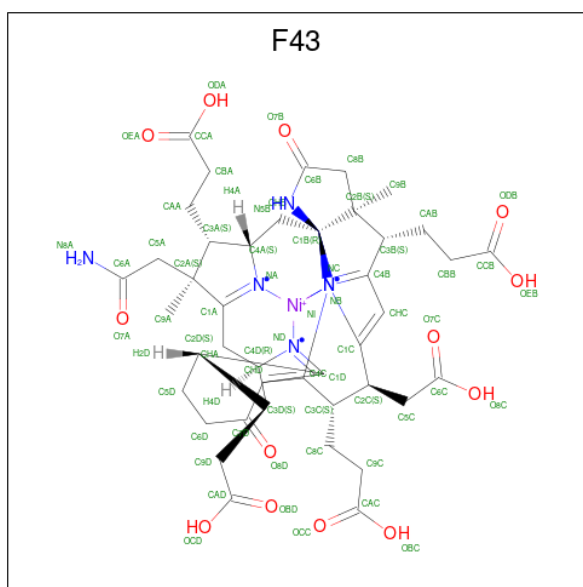
- Molecule 3 is a protein called METHYL-COENZYME M REDUCTASE.

Mol	Chain	Residues	Atoms					ZeroOcc	AltConf	Trace
			Total	C	N	O	S			
3	C	247	Total	C	N	O	S	36	6	0
			2021	1253	358	399	11			
3	F	247	Total	C	N	O	S	34	3	0
			2013	1247	357	398	11			

- Molecule 4 is ZINC ION (three-letter code: ZN) (formula: Zn).

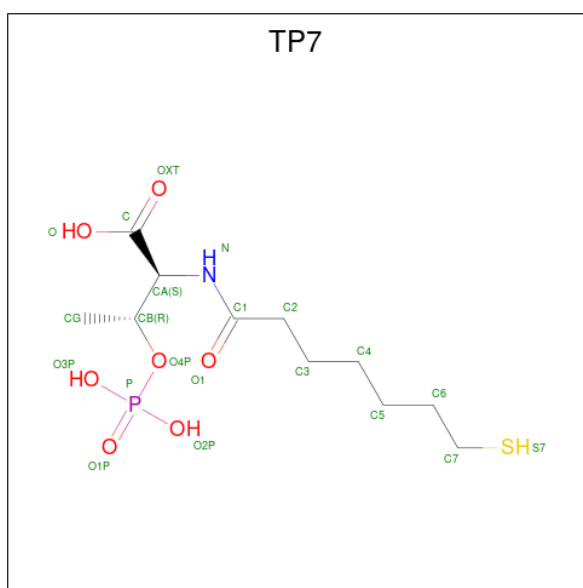
Mol	Chain	Residues	Atoms		ZeroOcc	AltConf
4	A	1	Total	Zn	0	0
			1	1		

- Molecule 5 is FACTOR 430 (three-letter code: F43) (formula: C₄₂H₅₁N₆NiO₁₃).



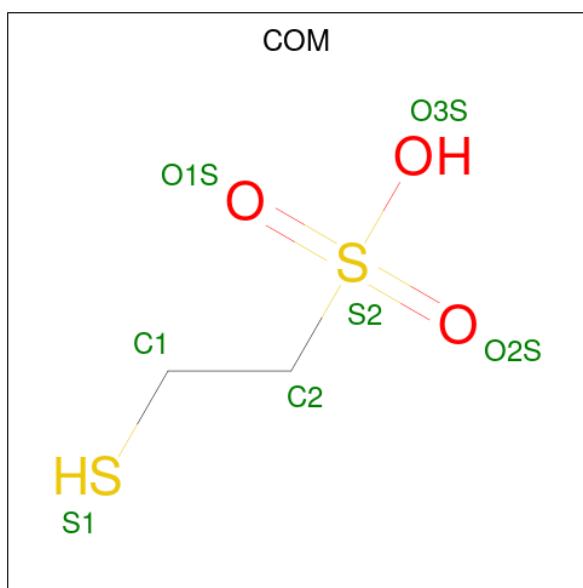
Mol	Chain	Residues	Atoms				ZeroOcc	AltConf	
5	A	1	Total	C	N	Ni	O	0	0
			62	42	6	1	13		
5	D	1	Total	C	N	Ni	O	0	0
			62	42	6	1	13		

- Molecule 6 is Coenzyme B (three-letter code: TP7) (formula: $C_{11}H_{22}NO_7PS$).



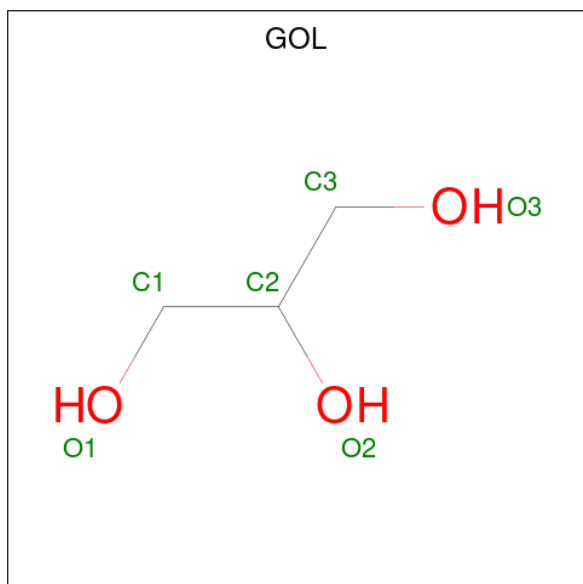
Mol	Chain	Residues	Atoms					ZeroOcc	AltConf	
6	A	1	Total	C	N	O	P	S	0	0
			21	11	1	7	1	1		
6	A	1	Total	C	N	O	P	S	0	0
			21	11	1	7	1	1		

- Molecule 7 is 1-THIOETHANESULFONIC ACID (three-letter code: COM) (formula: $C_2H_6O_3S_2$).



Mol	Chain	Residues	Atoms			ZeroOcc	AltConf	
7	A	1	Total	C	O	S	0	0
			7	2	3	2		
7	D	1	Total	C	O	S	0	0
			7	2	3	2		

- Molecule 8 is GLYCEROL (three-letter code: GOL) (formula: $C_3H_8O_3$).



Mol	Chain	Residues	Atoms			ZeroOcc	AltConf
8	A	1	Total	C	O		
			6	3	3	0	0

Continued on next page...

Continued from previous page...

Mol	Chain	Residues	Atoms			ZeroOcc	AltConf
8	A	1	Total	C	O	0	0
			6	3	3		
8	D	1	Total	C	O	0	0
			6	3	3		
8	D	1	Total	C	O	0	0
			6	3	3		

- Molecule 9 is SODIUM ION (three-letter code: NA) (formula: Na).

Mol	Chain	Residues	Atoms		ZeroOcc	AltConf
9	C	1	Total	Na	0	0
			1	1		
9	F	1	Total	Na	0	0
			1	1		

- Molecule 10 is water.

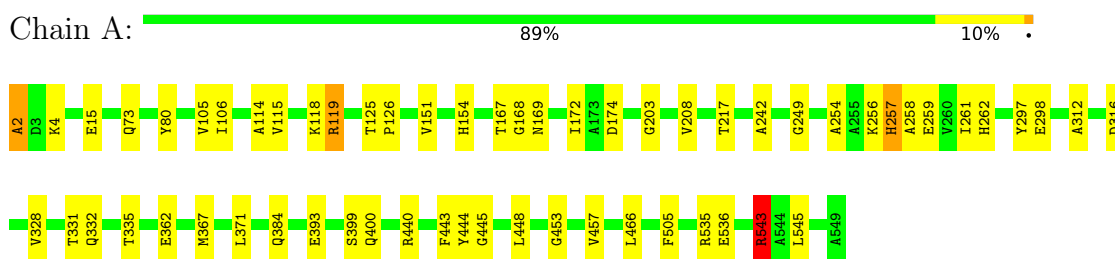
Mol	Chain	Residues	Atoms		ZeroOcc	AltConf
10	A	378	Total	O	0	0
			378	378		
10	B	306	Total	O	0	0
			306	306		
10	C	197	Total	O	0	0
			197	197		
10	D	367	Total	O	0	0
			367	367		
10	E	277	Total	O	0	0
			277	277		
10	F	188	Total	O	0	0
			188	188		

3 Residue-property plots [i](#)

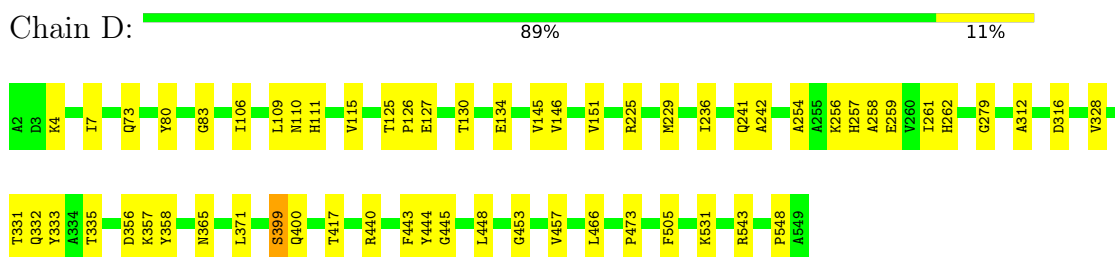
These plots are drawn for all protein, RNA, DNA and oligosaccharide chains in the entry. The first graphic for a chain summarises the proportions of the various outlier classes displayed in the second graphic. The second graphic shows the sequence view annotated by issues in geometry. Residues are color-coded according to the number of geometric quality criteria for which they contain at least one outlier: green = 0, yellow = 1, orange = 2 and red = 3 or more. Stretches of 2 or more consecutive residues without any outlier are shown as a green connector. Residues present in the sample, but not in the model, are shown in grey.

Note EDS was not executed.

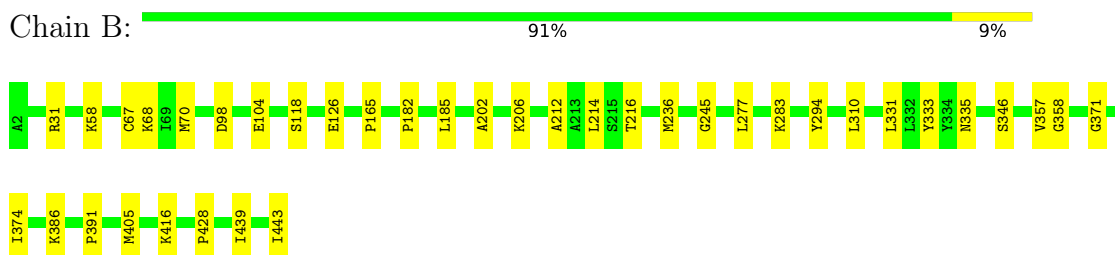
- Molecule 1: METHYL-COENZYME M REDUCTASE



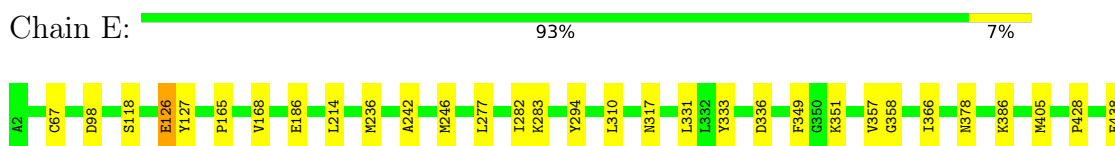
- Molecule 1: METHYL-COENZYME M REDUCTASE



- Molecule 2: METHYL-COENZYME M REDUCTASE



- Molecule 2: METHYL-COENZYME M REDUCTASE





- Molecule 3: METHYL-COENZYME M REDUCTASE

Chain C: 91% 8%



- Molecule 3: METHYL-COENZYME M REDUCTASE

Chain F: 91% 8%



4 Data and refinement statistics

Xtrriage (Phenix) and EDS were not executed - this section is therefore incomplete.

Property	Value	Source
Space group	P 1 21 1	Depositor
Cell constants a, b, c, α , β , γ	81.72Å 116.88Å 122.58Å 90.00° 92.02° 90.00°	Depositor
Resolution (Å)	30.00 – 1.16	Depositor
% Data completeness (in resolution range)	92.8 (30.00-1.16)	Depositor
R_{merge}	0.07	Depositor
R_{sym}	0.07	Depositor
Refinement program	CNS 0.3	Depositor
R, R_{free}	0.197 , 0.207	Depositor
Estimated twinning fraction	No twinning to report.	Xtrriage
Total number of atoms	21217	wwPDB-VP
Average B, all atoms (Å ²)	17.0	wwPDB-VP

5 Model quality i

5.1 Standard geometry i

Bond lengths and bond angles in the following residue types are not validated in this section: MHS, ZN, NA, AGM, TP7, COM, F43, SMC, GL3, MGN, GOL

The Z score for a bond length (or angle) is the number of standard deviations the observed value is removed from the expected value. A bond length (or angle) with $|Z| > 5$ is considered an outlier worth inspection. RMSZ is the root-mean-square of all Z scores of the bond lengths (or angles).

Mol	Chain	Bond lengths		Bond angles	
		RMSZ	# Z >5	RMSZ	# Z >5
1	A	0.36	2/4426 (0.0%)	0.58	6/6006 (0.1%)
1	D	0.32	0/4412	0.48	1/5988 (0.0%)
2	B	0.28	0/3462	0.46	0/4687
2	E	0.29	0/3413	0.45	0/4622
3	C	0.43	2/2083 (0.1%)	0.64	5/2804 (0.2%)
3	F	0.31	0/2061	0.56	4/2775 (0.1%)
All	All	0.33	4/19857 (0.0%)	0.52	16/26882 (0.1%)

Chiral center outliers are detected by calculating the chiral volume of a chiral center and verifying if the center is modelled as a planar moiety or with the opposite hand. A planarity outlier is detected by checking planarity of atoms in a peptide group, atoms in a mainchain group or atoms of a sidechain that are expected to be planar.

Mol	Chain	#Chirality outliers	#Planarity outliers
1	A	0	5
1	D	0	1
2	B	0	1
2	E	0	3
3	C	0	2
3	F	0	2
All	All	0	14

All (4) bond length outliers are listed below:

Mol	Chain	Res	Type	Atoms	Z	Observed(Å)	Ideal(Å)
3	C	161	ARG	NE-CZ	-11.34	1.18	1.33
1	A	2	ALA	N-CA	-7.25	1.31	1.46
3	C	161	ARG	CZ-NH1	6.02	1.40	1.33
1	A	2	ALA	CA-C	-5.03	1.39	1.52

All (16) bond angle outliers are listed below:

Mol	Chain	Res	Type	Atoms	Z	Observed(°)	Ideal(°)
3	C	161	ARG	NE-CZ-NH2	16.42	128.51	120.30
1	A	2	ALA	O-C-N	-15.83	97.37	122.70
1	A	2	ALA	CA-C-O	13.59	148.65	120.10
3	C	161	ARG	NE-CZ-NH1	-7.95	116.33	120.30
1	D	440	ARG	NE-CZ-NH2	7.47	124.03	120.30
3	C	174	ARG	NE-CZ-NH2	7.44	124.02	120.30
3	F	174	ARG	NE-CZ-NH2	7.41	124.00	120.30
3	F	173	ARG	NE-CZ-NH2	7.40	124.00	120.30
3	C	173	ARG	NE-CZ-NH2	7.27	123.93	120.30
1	A	119	ARG	NE-CZ-NH2	7.14	123.87	120.30
1	A	535	ARG	NE-CZ-NH2	6.95	123.78	120.30
3	F	161	ARG	NE-CZ-NH2	6.46	123.53	120.30
3	F	171	MET	CG-SD-CE	6.17	110.08	100.20
1	A	440	ARG	NE-CZ-NH2	5.80	123.20	120.30
1	A	2	ALA	CB-CA-C	-5.31	102.13	110.10
3	C	161	ARG	CB-CG-CD	5.06	124.76	111.60

There are no chirality outliers.

All (14) planarity outliers are listed below:

Mol	Chain	Res	Type	Group
1	A	2	ALA	Mainchain
1	A	257	MHS	Mainchain
1	A	399	SER	Mainchain
1	A	543[A]	ARG	Sidechain
1	A	543[B]	ARG	Sidechain
2	B	333	TYR	Sidechain
3	C	161	ARG	Sidechain
3	C	217	TYR	Sidechain
1	D	399	SER	Mainchain
2	E	333	TYR	Sidechain
2	E	336[A]	ASP	Sidechain
2	E	336[B]	ASP	Sidechain
3	F	217	TYR	Sidechain
3	F	92	TYR	Sidechain

5.2 Too-close contacts

In the following table, the Non-H and H(model) columns list the number of non-hydrogen atoms and hydrogen atoms in the chain respectively. The H(added) column lists the number of hydrogen atoms added and optimized by MolProbity. The Clashes column lists the number of clashes within the asymmetric unit, whereas Symm-Clashes lists symmetry-related clashes.

Mol	Chain	Non-H	H(model)	H(added)	Clashes	Symm-Clashes
1	A	4293	0	4081	43	0
1	D	4290	0	4087	47	0
2	B	3352	0	3352	41	0
2	E	3328	0	3319	26	0
3	C	2021	0	1958	16	0
3	F	2013	0	1947	9	0
4	A	1	0	0	0	0
5	A	62	0	43	2	0
5	D	62	0	43	2	0
6	A	42	0	38	1	0
7	A	7	0	5	1	0
7	D	7	0	5	1	0
8	A	12	0	16	3	0
8	D	12	0	16	3	0
9	C	1	0	0	0	0
9	F	1	0	0	0	0
10	A	378	0	0	7	2
10	B	306	0	0	11	1
10	C	197	0	0	6	1
10	D	367	0	0	14	2
10	E	277	0	0	1	0
10	F	188	0	0	0	0
All	All	21217	0	18910	164	3

The all-atom clashscore is defined as the number of clashes found per 1000 atoms (including hydrogen atoms). The all-atom clashscore for this structure is 4.

All (164) close contacts within the same asymmetric unit are listed below, sorted by their clash magnitude.

Atom-1	Atom-2	Interatomic distance (Å)	Clash overlap (Å)
3:C:153[B]:LYS:NZ	3:C:153[B]:LYS:CE	1.68	1.55
1:D:371[B]:LEU:CG	1:D:371[B]:LEU:CD2	1.89	1.50
2:E:236[B]:MET:SD	2:E:236[B]:MET:CG	2.08	1.40
2:E:277[B]:LEU:HD23	2:E:282:ILE:HG13	1.20	1.16
2:B:104[B]:GLU:HG3	10:B:7481:HOH:O	1.45	1.13
3:C:148[B]:SER:OG	10:C:7423:HOH:O	1.78	1.01
10:A:7706:HOH:O	2:B:236[B]:MET:CE	2.16	0.93
2:B:104[B]:GLU:CG	10:B:7481:HOH:O	2.05	0.93
10:A:7706:HOH:O	2:B:236[B]:MET:HE1	1.69	0.92
2:E:277[B]:LEU:HD23	2:E:282:ILE:CG1	2.01	0.91
2:B:104[B]:GLU:CD	10:B:7481:HOH:O	2.08	0.90
1:D:356:ASP:HB3	10:D:8697:HOH:O	1.71	0.90

Continued on next page...

Continued from previous page...

Atom-1	Atom-2	Interatomic distance (Å)	Clash overlap (Å)
1:A:256:LYS:O	8:A:804:GOL:H31	1.71	0.89
1:D:256:LYS:O	8:D:806:GOL:H31	1.72	0.89
1:A:167[B]:THR:HG23	1:A:203:GLY:O	1.75	0.86
1:A:256:LYS:O	8:A:804:GOL:C3	2.26	0.83
2:B:212:ALA:O	2:B:216[B]:THR:HG23	1.79	0.82
3:C:153[B]:LYS:NZ	3:C:153[B]:LYS:CD	2.43	0.80
1:D:256:LYS:O	8:D:806:GOL:C3	2.30	0.80
2:B:206[A]:LYS:NZ	10:B:8261:HOH:O	2.13	0.79
2:E:277[B]:LEU:CD2	2:E:282:ILE:HG13	2.09	0.79
1:D:111:HIS:N	10:D:7761:HOH:O	2.16	0.79
2:B:70[B]:MET:SD	10:D:7163:HOH:O	2.42	0.77
2:B:277[B]:LEU:HD21	2:B:294:TYR:HE2	1.53	0.73
1:A:262:HIS:HD2	10:A:7101:HOH:O	1.72	0.73
1:A:172:ILE:HD12	10:A:8234:HOH:O	1.90	0.71
1:D:110:ASN:N	10:D:7761:HOH:O	2.22	0.70
2:B:104[B]:GLU:OE2	10:B:7481:HOH:O	2.09	0.69
1:A:167[B]:THR:HG22	1:A:169:ASN:H	1.58	0.68
2:E:277[B]:LEU:HD21	2:E:294:TYR:CE1	2.30	0.67
2:B:277[B]:LEU:HD21	2:B:294:TYR:CE2	2.32	0.64
2:B:31[B]:ARG:NH1	10:B:8232:HOH:O	2.30	0.64
1:D:125:THR:HB	1:D:126:PRO:HD2	1.80	0.64
10:A:7706:HOH:O	2:B:236[B]:MET:HE2	1.90	0.63
1:A:125:THR:HB	1:A:126:PRO:HD2	1.82	0.61
1:D:262:HIS:HD2	10:D:7428:HOH:O	1.84	0.61
1:D:371[B]:LEU:CD2	1:D:371[B]:LEU:HB2	2.30	0.60
3:C:148[A]:SER:HB2	10:C:7423:HOH:O	1.99	0.60
5:A:700:F43:H9A1	1:D:328:VAL:HB	1.85	0.58
1:A:328:VAL:HB	5:D:800:F43:H9A1	1.85	0.58
1:D:371[B]:LEU:CD2	1:D:371[B]:LEU:CD1	2.81	0.57
1:D:130:THR:HG22	1:D:134[B]:GLU:OE2	2.05	0.56
1:A:536:GLU:HA	1:D:548:PRO:HG3	1.89	0.55
1:D:236:ILE:HA	1:D:241[B]:GLN:NE2	2.21	0.55
1:D:357:LYS:HD2	10:D:7389:HOH:O	2.07	0.54
1:A:73:GLN:HB2	1:A:80:TYR:CE2	2.43	0.53
2:B:405:MET:HG3	1:D:115:VAL:HG22	1.90	0.53
1:D:254:ALA:HA	1:D:258:ALA:HB3	1.91	0.53
2:E:236[B]:MET:CG	2:E:236[B]:MET:CE	2.86	0.52
1:A:254:ALA:HA	1:A:258:ALA:HB3	1.90	0.52
1:D:531:LYS:HD2	10:D:7456:HOH:O	2.10	0.52
3:C:95:PRO:HD2	10:C:7423:HOH:O	2.10	0.52
2:B:216[B]:THR:CG2	2:B:391:PRO:HB3	2.40	0.52

Continued on next page...

Continued from previous page...

Atom-1	Atom-2	Interatomic distance (Å)	Clash overlap (Å)
3:C:64:ASP:HB3	3:C:67:ARG:HB2	1.91	0.51
2:B:214:LEU:HB2	2:B:428:PRO:HG3	1.93	0.51
10:B:8231:HOH:O	2:E:168:VAL:HG13	2.10	0.51
2:B:310:LEU:HD11	2:B:331:LEU:HD23	1.93	0.50
3:C:62:PRO:HA	10:C:7392:HOH:O	2.11	0.50
1:A:256:LYS:O	8:A:804:GOL:H32	2.10	0.49
3:C:86:GLN:OE1	3:C:120[A]:ARG:HD2	2.12	0.49
1:D:110:ASN:C	10:D:7761:HOH:O	2.48	0.49
2:E:214:LEU:HB2	2:E:428:PRO:HG3	1.94	0.49
10:B:7814:HOH:O	3:C:248:LEU:HD12	2.12	0.49
2:B:58:LYS:HG3	10:B:7961:HOH:O	2.13	0.48
2:B:202:ALA:HB1	2:B:416:LYS:HB2	1.96	0.48
1:A:115:VAL:HG22	2:E:405:MET:HG3	1.95	0.48
1:D:445:GL3:HA2	2:E:357:VAL:HG12	1.95	0.48
1:A:242:ALA:HB2	3:F:84:TYR:CE1	2.49	0.48
2:B:68:LYS:HE3	10:B:7103:HOH:O	2.12	0.48
2:B:216[B]:THR:HG22	2:B:391:PRO:CB	2.44	0.48
1:D:453:GLY:O	1:D:457:VAL:HG23	2.14	0.48
2:B:216[B]:THR:HG21	2:B:245:GLY:CA	2.42	0.48
10:D:7113:HOH:O	2:E:351:LYS:HE3	2.13	0.48
1:D:106:ILE:HB	1:D:261:ILE:HB	1.96	0.47
1:D:262:HIS:CD2	10:D:7428:HOH:O	2.64	0.47
1:D:443:PHE:HB2	7:D:9700:COM:O1S	2.14	0.47
1:D:4:LYS:HB2	1:D:7:ILE:HG12	1.96	0.47
3:C:84:TYR:CE1	1:D:242:ALA:HB2	2.49	0.47
1:D:332:GLN:HA	1:D:335:THR:OG1	2.15	0.47
1:A:367[B]:MET:HE3	1:A:371:LEU:HG	1.97	0.47
2:B:182:PRO:O	2:B:185[B]:LEU:HG	2.15	0.47
1:D:331:THR:O	1:D:335:THR:HG23	2.15	0.47
2:B:216[B]:THR:HG22	2:B:391:PRO:HB3	1.96	0.46
1:D:236:ILE:N	1:D:241[B]:GLN:HE22	2.13	0.46
1:A:249:GLY:HA3	10:E:8180:HOH:O	2.16	0.46
5:A:700:F43:O7B	2:E:366:ILE:HG12	2.16	0.46
2:B:67:CYS:HB3	1:D:505:PHE:CE1	2.51	0.46
1:D:357:LYS:HD3	1:D:358:TYR:CE2	2.51	0.46
1:A:4[B]:LYS:NZ	1:A:384:GLN:OE1	2.49	0.46
1:A:298[B]:GLU:OE1	1:A:298[B]:GLU:HA	2.12	0.46
1:A:297[B]:TYR:O	1:A:298[B]:GLU:OE1	2.33	0.46
1:A:466[A]:LEU:HD22	2:E:165:PRO:HD2	1.97	0.46
3:C:61:GLU:HG3	10:C:7281:HOH:O	2.16	0.46
1:A:453:GLY:O	1:A:457:VAL:HG23	2.16	0.46

Continued on next page...

Continued from previous page...

Atom-1	Atom-2	Interatomic distance (Å)	Clash overlap (Å)
1:A:262:HIS:CD2	10:A:7101:HOH:O	2.56	0.45
1:A:167[B]:THR:HG22	1:A:168:GLY:N	2.31	0.45
1:D:73:GLN:HB2	1:D:80:TYR:CE2	2.51	0.45
1:D:109:LEU:C	10:D:7761:HOH:O	2.51	0.45
1:D:145:VAL:HG23	1:D:146:VAL:HG23	1.98	0.45
2:B:371:GLY:O	2:B:374:ILE:HG13	2.16	0.45
3:F:233:ILE:O	3:F:237[A]:ILE:HG12	2.17	0.45
1:A:362:GLU:HG3	10:A:7505:HOH:O	2.15	0.45
1:A:445:GL3:HA2	2:B:357:VAL:HG12	2.00	0.44
2:B:216[B]:THR:HG22	2:B:391:PRO:CG	2.47	0.44
2:B:31[B]:ARG:NH1	2:B:31[B]:ARG:HG3	2.32	0.44
1:D:259[B]:GLU:OE1	10:D:7761:HOH:O	2.17	0.44
1:D:333:TYR:HE1	1:D:399:SER:HB2	1.83	0.44
1:A:105[A]:VAL:HG23	1:A:208:VAL:HB	1.99	0.44
1:A:151:VAL:HG11	1:D:83:GLY:HA3	2.00	0.44
2:B:335:ASN:OD1	2:B:346:SER:HB2	2.17	0.43
1:D:110:ASN:CA	10:D:7761:HOH:O	2.63	0.43
1:A:505:PHE:CE1	2:E:67:CYS:HB3	2.54	0.43
2:B:216[B]:THR:HG21	2:B:245:GLY:HA3	2.00	0.43
1:A:254:ALA:O	1:A:259[B]:GLU:HG2	2.18	0.43
1:A:312:ALA:O	1:A:316:ASP:HB2	2.18	0.43
2:B:236[A]:MET:HB2	3:C:248:LEU:HD13	2.01	0.43
2:E:310:LEU:HD11	2:E:331:LEU:HD23	1.99	0.43
6:A:9500:TP7:H72C	6:A:9500:TP7:H42C	1.79	0.43
1:A:393:GLU:HG3	3:C:160:LEU:HG	2.00	0.43
2:B:165:PRO:HD2	1:D:466[A]:LEU:HD22	2.01	0.42
3:C:233:ILE:O	3:C:237[A]:ILE:HG12	2.19	0.42
1:D:312:ALA:O	1:D:316:ASP:HB2	2.19	0.42
2:E:242:ALA:O	2:E:246:MET:HB2	2.18	0.42
1:A:114:ALA:O	1:A:118:LYS:HB2	2.18	0.42
1:A:242:ALA:HB2	3:F:84:TYR:CZ	2.54	0.42
1:D:225:ARG:O	1:D:229:MET:HG2	2.19	0.42
1:A:217:THR:HG23	10:D:7609:HOH:O	2.20	0.42
1:A:332:GLN:HA	1:A:335:THR:OG1	2.20	0.42
2:B:386:LYS:HA	2:B:386:LYS:HD3	1.82	0.42
2:E:186:GLU:HG3	2:E:378:ASN:O	2.20	0.42
2:B:31[B]:ARG:HG3	2:B:31[B]:ARG:HH11	1.85	0.41
1:A:154:HIS:CE1	1:A:545:LEU:HD21	2.54	0.41
3:C:95:PRO:HA	3:C:214:THR:HA	2.02	0.41
2:B:439:ILE:HD12	2:B:443:ILE:HD11	2.01	0.41
2:E:317:ASN:O	3:F:111:GLY:HA2	2.21	0.41

Continued on next page...

Continued from previous page...

Atom-1	Atom-2	Interatomic distance (Å)	Clash overlap (Å)
3:F:117:LEU:HB2	3:F:120[B]:ARG:HG3	2.01	0.41
5:D:800:F43:O8D	5:D:800:F43:H3C	2.19	0.41
2:E:386:LYS:HD3	2:E:386:LYS:HA	1.81	0.41
1:A:331:THR:O	1:A:335:THR:HG23	2.20	0.41
1:D:256:LYS:O	8:D:806:GOL:H32	2.16	0.41
1:A:106:ILE:HB	1:A:261:ILE:HB	2.03	0.41
1:A:443:PHE:HB2	7:A:9800:COM:O1S	2.21	0.41
3:F:174:ARG:HG2	3:F:188:LYS:HB2	2.03	0.41
3:F:191:ILE:HD12	3:F:191:ILE:HA	1.95	0.41
3:F:197:GLU:HA	3:F:198:PRO:HD3	1.97	0.41
1:D:448:LEU:HD12	2:E:358:GLY:HA3	2.03	0.40
1:A:448:LEU:HD12	2:B:358:GLY:HA3	2.03	0.40
1:D:279:GLY:HA2	1:D:473:PRO:HB2	2.03	0.40
1:D:365:ASN:HD22	1:D:417:THR:HB	1.86	0.40
2:E:349:PHE:HZ	3:F:248:LEU:HD21	1.85	0.40
1:A:328:VAL:HG13	1:D:151:VAL:O	2.21	0.40
2:B:31[B]:ARG:NH2	10:B:8637:HOH:O	2.46	0.40
2:E:126:GLU:HB2	2:E:127:TYR:H	1.72	0.40
3:C:100:VAL:HG13	10:C:8259:HOH:O	2.21	0.40

All (3) symmetry-related close contacts are listed below. The label for Atom-2 includes the symmetry operator and encoded unit-cell translations to be applied.

Atom-1	Atom-2	Interatomic distance (Å)	Clash overlap (Å)
10:A:8708:HOH:O	10:D:8435:HOH:O[2_644]	1.87	0.33
10:A:8554:HOH:O	10:D:8672:HOH:O[2_645]	1.98	0.22
10:B:8702:HOH:O	10:C:8682:HOH:O[2_555]	2.19	0.01

5.3 Torsion angles [\(i\)](#)

5.3.1 Protein backbone [\(i\)](#)

In the following table, the Percentiles column shows the percent Ramachandran outliers of the chain as a percentile score with respect to all X-ray entries followed by that with respect to entries of similar resolution.

The Analysed column shows the number of residues for which the backbone conformation was analysed, and the total number of residues.

Mol	Chain	Analysed	Favoured	Allowed	Outliers	Percentiles	
1	A	556/548 (102%)	532 (96%)	24 (4%)	0	100	100
1	D	554/548 (101%)	528 (95%)	26 (5%)	0	100	100
2	B	453/442 (102%)	449 (99%)	4 (1%)	0	100	100
2	E	447/442 (101%)	442 (99%)	5 (1%)	0	100	100
3	C	251/247 (102%)	245 (98%)	6 (2%)	0	100	100
3	F	248/247 (100%)	241 (97%)	7 (3%)	0	100	100
All	All	2509/2474 (101%)	2437 (97%)	72 (3%)	0	100	100

There are no Ramachandran outliers to report.

5.3.2 Protein sidechains [i](#)

In the following table, the Percentiles column shows the percent sidechain outliers of the chain as a percentile score with respect to all X-ray entries followed by that with respect to entries of similar resolution.

The Analysed column shows the number of residues for which the sidechain conformation was analysed, and the total number of residues.

Mol	Chain	Analysed	Rotameric	Outliers	Percentiles	
1	A	448/433 (104%)	442 (99%)	6 (1%)	69	32
1	D	446/433 (103%)	442 (99%)	4 (1%)	78	48
2	B	354/341 (104%)	351 (99%)	3 (1%)	81	52
2	E	348/341 (102%)	343 (99%)	5 (1%)	67	30
3	C	221/215 (103%)	218 (99%)	3 (1%)	67	30
3	F	218/215 (101%)	214 (98%)	4 (2%)	59	20
All	All	2035/1978 (103%)	2010 (99%)	25 (1%)	71	35

All (25) residues with a non-rotameric sidechain are listed below:

Mol	Chain	Res	Type
1	A	15	GLU
1	A	119	ARG
1	A	174	ASP
1	A	444	TYR
1	A	543[A]	ARG
1	A	543[B]	ARG
2	B	98	ASP

Continued on next page...

Continued from previous page...

Mol	Chain	Res	Type
2	B	126	GLU
2	B	283	LYS
3	C	121	GLN
3	C	196	ASP
3	C	248	LEU
1	D	127	GLU
1	D	444	TYR
1	D	543[A]	ARG
1	D	543[B]	ARG
2	E	98	ASP
2	E	126	GLU
2	E	283	LYS
2	E	438	GLU
2	E	441	ASN
3	F	121	GLN
3	F	186	MET
3	F	196	ASP
3	F	208	GLU

Sometimes sidechains can be flipped to improve hydrogen bonding and reduce clashes. All (6) such sidechains are listed below:

Mol	Chain	Res	Type
1	A	42	ASN
1	A	262	HIS
3	C	121	GLN
3	C	238	HIS
1	D	365	ASN
3	F	121	GLN

5.3.3 RNA [i](#)

There are no RNA molecules in this entry.

5.4 Non-standard residues in protein, DNA, RNA chains [i](#)

10 non-standard protein/DNA/RNA residues are modelled in this entry.

In the following table, the Counts columns list the number of bonds (or angles) for which Mogul statistics could be retrieved, the number of bonds (or angles) that are observed in the model and the number of bonds (or angles) that are defined in the Chemical Component Dictionary. The Link column lists molecule types, if any, to which the group is linked. The Z score for a bond

length (or angle) is the number of standard deviations the observed value is removed from the expected value. A bond length (or angle) with $|Z| > 2$ is considered an outlier worth inspection. RMSZ is the root-mean-square of all Z scores of the bond lengths (or angles).

Mol	Type	Chain	Res	Link	Bond lengths			Bond angles		
					Counts	RMSZ	# Z > 2	Counts	RMSZ	# Z > 2
1	MGN	A	400	1	6,9,10	1.10	1 (16%)	5,12,14	2.12	1 (20%)
1	MGN	D	400	1	6,9,10	1.01	1 (16%)	5,12,14	2.02	1 (20%)
1	SMC	A	452	1	5,6,7	0.49	0	2,6,8	0.34	0
1	GL3	A	445	1	2,3,4	0.20	0	1,2,4	0.11	0
1	GL3	D	445	1	2,3,4	0.26	0	1,2,4	0.12	0
1	SMC	D	452	1	5,6,7	0.59	0	2,6,8	0.30	0
1	AGM	D	271	1	10,11,12	0.48	0	6,13,15	0.18	0
1	AGM	A	271	1	10,11,12	0.44	0	6,13,15	0.24	0
1	MHS	D	257	1	7,11,12	1.59	2 (28%)	6,14,16	1.51	1 (16%)
1	MHS	A	257	1	7,11,12	3.57	4 (57%)	6,14,16	2.20	2 (33%)

In the following table, the Chirals column lists the number of chiral outliers, the number of chiral centers analysed, the number of these observed in the model and the number defined in the Chemical Component Dictionary. Similar counts are reported in the Torsion and Rings columns. '-' means no outliers of that kind were identified.

Mol	Type	Chain	Res	Link	Chirals	Torsions	Rings
1	MGN	A	400	1	-	0/7/9/12	-
1	MGN	D	400	1	-	0/7/9/12	-
1	SMC	A	452	1	-	1/3/5/7	-
1	GL3	A	445	1	-	1/1/1/2	-
1	GL3	D	445	1	-	0/1/1/2	-
1	SMC	D	452	1	-	1/3/5/7	-
1	AGM	D	271	1	-	1/10/11/13	-
1	AGM	A	271	1	-	2/10/11/13	-
1	MHS	D	257	1	-	0/5/6/8	0/1/1/1
1	MHS	A	257	1	-	0/5/6/8	0/1/1/1

All (8) bond length outliers are listed below:

Mol	Chain	Res	Type	Atoms	Z	Observed(Å)	Ideal(Å)
1	A	257	MHS	CM-ND1	6.93	1.63	1.47
1	A	257	MHS	CB-CG	5.08	1.58	1.50
1	D	257	MHS	CB-CG	2.80	1.54	1.50
1	D	257	MHS	CD2-NE2	2.71	1.43	1.35
1	A	257	MHS	CE1-NE2	-2.55	1.28	1.34
1	A	400	MGN	CB1-CA	-2.36	1.52	1.55

Continued on next page...

Continued from previous page...

Mol	Chain	Res	Type	Atoms	Z	Observed(Å)	Ideal(Å)
1	D	400	MGN	CB1-CA	-2.19	1.52	1.55
1	A	257	MHS	CD2-NE2	2.10	1.42	1.35

All (5) bond angle outliers are listed below:

Mol	Chain	Res	Type	Atoms	Z	Observed(°)	Ideal(°)
1	A	400	MGN	CB2-CA-CB1	-4.55	102.98	111.00
1	D	400	MGN	CB2-CA-CB1	-4.29	103.45	111.00
1	A	257	MHS	CG-CD2-NE2	-3.78	101.77	108.80
1	D	257	MHS	CM-ND1-CG	3.46	129.04	124.44
1	A	257	MHS	CD2-NE2-CE1	2.99	110.45	105.78

There are no chirality outliers.

All (6) torsion outliers are listed below:

Mol	Chain	Res	Type	Atoms
1	A	452	SMC	CA-CB-SG-CS
1	D	452	SMC	CA-CB-SG-CS
1	A	271	AGM	CE2-CD-NE1-CZ
1	A	445	GL3	S-C-CA-N
1	D	271	AGM	NE1-CD-CG-CB
1	A	271	AGM	N-CA-CB-CG

There are no ring outliers.

2 monomers are involved in 2 short contacts:

Mol	Chain	Res	Type	Clashes	Symm-Clashes
1	A	445	GL3	1	0
1	D	445	GL3	1	0

5.5 Carbohydrates [i](#)

There are no monosaccharides in this entry.

5.6 Ligand geometry [i](#)

Of 13 ligands modelled in this entry, 3 are monoatomic - leaving 10 for Mogul analysis.

In the following table, the Counts columns list the number of bonds (or angles) for which Mogul statistics could be retrieved, the number of bonds (or angles) that are observed in the model and

the number of bonds (or angles) that are defined in the Chemical Component Dictionary. The Link column lists molecule types, if any, to which the group is linked. The Z score for a bond length (or angle) is the number of standard deviations the observed value is removed from the expected value. A bond length (or angle) with $|Z| > 2$ is considered an outlier worth inspection. RMSZ is the root-mean-square of all Z scores of the bond lengths (or angles).

Mol	Type	Chain	Res	Link	Bond lengths			Bond angles		
					Counts	RMSZ	# Z > 2	Counts	RMSZ	# Z > 2
8	GOL	D	805	-	5,5,5	0.72	0	5,5,5	0.84	0
8	GOL	A	807	-	5,5,5	0.73	0	5,5,5	0.84	0
6	TP7	A	9000	-	19,20,20	2.32	7 (36%)	24,26,26	1.35	2 (8%)
6	TP7	A	9500	-	19,20,20	2.38	6 (31%)	24,26,26	1.37	3 (12%)
8	GOL	D	806	-	5,5,5	0.70	0	5,5,5	0.84	0
7	COM	D	9700	5	6,6,6	1.55	2 (33%)	7,8,8	1.41	1 (14%)
8	GOL	A	804	-	5,5,5	0.71	0	5,5,5	0.84	0
5	F43	A	700	1,7	61,71,71	3.21	18 (29%)	64,118,118	1.85	16 (25%)
5	F43	D	800	1,7	61,71,71	4.62	22 (36%)	64,118,118	3.02	25 (39%)
7	COM	A	9800	5	6,6,6	1.48	0	7,8,8	1.39	0

In the following table, the Chirals column lists the number of chiral outliers, the number of chiral centers analysed, the number of these observed in the model and the number defined in the Chemical Component Dictionary. Similar counts are reported in the Torsion and Rings columns. '-' means no outliers of that kind were identified.

Mol	Type	Chain	Res	Link	Chirals	Torsions	Rings
8	GOL	D	805	-	-	2/4/4/4	-
8	GOL	A	807	-	-	2/4/4/4	-
6	TP7	A	9000	-	-	2/24/24/24	-
6	TP7	A	9500	-	-	3/24/24/24	-
8	GOL	D	806	-	-	2/4/4/4	-
7	COM	D	9700	5	-	0/4/4/4	-
8	GOL	A	804	-	-	2/4/4/4	-
5	F43	A	700	1,7	-	9/28/185/185	-
5	F43	D	800	1,7	-	9/28/185/185	-
7	COM	A	9800	5	-	0/4/4/4	-

All (55) bond length outliers are listed below:

Mol	Chain	Res	Type	Atoms	Z	Observed(Å)	Ideal(Å)
5	D	800	F43	CHB-C1B	-25.06	1.36	1.53
5	D	800	F43	CHD-C1D	15.18	1.63	1.43
5	A	700	F43	NI-NA	13.47	2.18	1.89

Continued on next page...

Continued from previous page...

Mol	Chain	Res	Type	Atoms	Z	Observed(Å)	Ideal(Å)
5	A	700	F43	NI-NB	12.02	2.15	1.89
5	D	800	F43	NI-NA	8.07	2.06	1.89
5	D	800	F43	C4D-ND	7.37	1.60	1.49
5	A	700	F43	NI-ND	7.33	2.05	1.89
5	D	800	F43	CHC-C4B	7.22	1.59	1.39
6	A	9500	TP7	C2-C1	-6.27	1.39	1.51
6	A	9000	TP7	C2-C1	-6.16	1.39	1.51
5	A	700	F43	C4A-NA	-5.96	1.40	1.49
5	D	800	F43	NI-NB	5.62	2.01	1.89
5	A	700	F43	C6D-C7D	5.38	1.57	1.50
5	D	800	F43	CAA-C3A	5.15	1.63	1.53
5	A	700	F43	C9D-C3D	-4.70	1.44	1.53
5	D	800	F43	CAB-C3B	4.61	1.65	1.54
5	D	800	F43	C3D-C4D	-4.53	1.45	1.53
6	A	9500	TP7	CA-C	4.23	1.59	1.52
5	D	800	F43	C9A-C2A	-4.21	1.47	1.54
5	D	800	F43	CHA-C4D	4.19	1.57	1.53
6	A	9000	TP7	CA-C	4.13	1.59	1.52
5	A	700	F43	C1C-NC	3.88	1.45	1.37
5	A	700	F43	CAA-C3A	3.52	1.60	1.53
5	D	800	F43	CHD-C4C	-3.45	1.31	1.40
5	A	700	F43	C9B-C2B	-3.44	1.47	1.54
6	A	9500	TP7	CB-CA	-3.42	1.45	1.53
5	A	700	F43	C5D-C2D	-3.24	1.47	1.53
5	D	800	F43	C6B-N5B	-3.19	1.29	1.34
6	A	9000	TP7	C1-N	3.10	1.40	1.34
6	A	9500	TP7	C1-N	3.04	1.40	1.34
5	A	700	F43	CHD-C7D	3.04	1.53	1.46
5	D	800	F43	C5D-C2D	-2.96	1.48	1.53
5	D	800	F43	C4A-NA	-2.95	1.44	1.49
5	D	800	F43	CHD-C7D	2.93	1.52	1.46
6	A	9000	TP7	P-O4P	2.83	1.64	1.59
5	D	800	F43	C6D-C7D	-2.78	1.47	1.50
5	D	800	F43	C8B-C2B	-2.77	1.50	1.54
6	A	9500	TP7	P-O4P	2.75	1.64	1.59
5	A	700	F43	C3C-C4C	-2.62	1.46	1.50
5	A	700	F43	C2B-C3B	2.49	1.64	1.57
5	A	700	F43	C4C-NC	2.48	1.39	1.35
6	A	9000	TP7	CB-CA	-2.46	1.48	1.53
5	D	800	F43	C2A-C3A	2.38	1.59	1.54
6	A	9500	TP7	CA-N	-2.35	1.41	1.45
6	A	9000	TP7	CA-N	-2.32	1.41	1.45

Continued on next page...

Continued from previous page...

Mol	Chain	Res	Type	Atoms	Z	Observed(Å)	Ideal(Å)
5	A	700	F43	C4D-ND	-2.29	1.45	1.49
5	D	800	F43	C3C-C2C	2.27	1.60	1.54
5	D	800	F43	C5C-C2C	2.24	1.57	1.53
5	A	700	F43	C8B-C6B	-2.23	1.46	1.50
6	A	9000	TP7	P-O2P	-2.14	1.46	1.54
5	A	700	F43	C5A-C2A	-2.14	1.49	1.56
7	D	9700	COM	O1S-S2	2.09	1.51	1.45
5	D	800	F43	C2B-C3B	2.09	1.63	1.57
5	A	700	F43	CHC-C4B	2.05	1.45	1.39
7	D	9700	COM	C2-S2	2.01	1.80	1.77

All (47) bond angle outliers are listed below:

Mol	Chain	Res	Type	Atoms	Z	Observed(°)	Ideal(°)
5	D	800	F43	C4D-ND-C1D	-12.08	92.64	108.51
5	D	800	F43	C3D-C4D-ND	8.34	115.32	102.34
5	D	800	F43	C5D-C2D-C1D	7.14	120.06	110.45
5	D	800	F43	C3B-C4B-CHC	-6.38	109.56	123.32
5	D	800	F43	C2D-C1D-CHD	-5.69	114.56	121.85
5	D	800	F43	C6D-C7D-CHD	4.99	126.34	116.95
5	A	700	F43	O8D-C7D-C6D	-4.63	113.27	120.86
5	A	700	F43	CAB-C3B-C2B	-4.43	109.71	119.09
5	A	700	F43	C4A-NA-C1A	4.42	114.31	108.97
5	A	700	F43	C3B-C4B-CHC	-4.25	114.15	123.32
5	A	700	F43	C3D-C4D-ND	4.21	108.89	102.34
5	D	800	F43	CAB-C3B-C2B	-4.20	110.19	119.09
5	D	800	F43	O8D-C7D-C6D	-4.10	114.14	120.86
5	D	800	F43	C7D-CHD-C4C	3.84	129.69	121.61
5	D	800	F43	C3A-C4A-NA	3.71	107.94	102.30
5	D	800	F43	C9A-C2A-C3A	3.42	118.03	112.98
6	A	9500	TP7	O1-C1-N	-3.38	117.25	122.95
6	A	9000	TP7	O1-C1-N	-3.33	117.34	122.95
5	D	800	F43	C2B-C3B-C4B	-3.26	97.95	101.63
6	A	9000	TP7	C4-C3-C2	3.16	124.56	113.19
6	A	9500	TP7	C4-C3-C2	3.13	124.45	113.19
5	D	800	F43	C1B-CHB-C4A	3.12	116.71	109.54
5	D	800	F43	C5C-C2C-C3C	-3.11	106.97	114.94
5	D	800	F43	C3D-C2D-C1D	-3.10	97.45	102.69
5	D	800	F43	C2B-C1B-NB	2.88	106.16	101.84
5	A	700	F43	C5D-C2D-C1D	2.84	114.27	110.45
5	D	800	F43	OEB-CCB-CBB	2.78	122.96	114.03
5	A	700	F43	C2B-C1B-NB	2.76	105.97	101.84

Continued on next page...

Continued from previous page...

Mol	Chain	Res	Type	Atoms	Z	Observed(°)	Ideal(°)
5	A	700	F43	ODB-CCB-CBB	-2.56	114.87	123.08
5	A	700	F43	C6D-C7D-CHD	2.53	121.71	116.95
5	A	700	F43	C2B-C3B-C4B	-2.52	98.79	101.63
5	D	800	F43	ODB-CCB-CBB	-2.51	115.03	123.08
5	D	800	F43	C2C-C5C-C6C	-2.50	109.06	114.04
5	D	800	F43	C1D-CHD-C4C	-2.48	118.26	125.31
5	D	800	F43	C8C-C3C-C2C	-2.41	106.21	112.89
5	A	700	F43	C5C-C2C-C3C	-2.41	108.78	114.94
5	A	700	F43	OEB-CCB-CBB	2.38	121.67	114.03
5	A	700	F43	OBC-CAC-C9C	2.29	121.40	114.03
5	A	700	F43	CAB-C3B-C4B	2.22	115.11	111.19
5	D	800	F43	C9B-C2B-C1B	-2.20	109.25	113.47
5	D	800	F43	C9A-C2A-C5A	2.13	114.32	110.80
5	A	700	F43	O7B-C6B-N5B	-2.12	122.38	125.13
6	A	9500	TP7	C5-C6-C7	-2.07	109.40	113.09
7	D	9700	COM	O2S-S2-C2	2.04	109.37	106.92
5	A	700	F43	C2A-C3A-C4A	-2.03	99.26	102.36
5	D	800	F43	O8D-C7D-CHD	-2.03	119.28	122.75
5	D	800	F43	OBC-CAC-C9C	2.01	120.47	114.03

There are no chirality outliers.

All (31) torsion outliers are listed below:

Mol	Chain	Res	Type	Atoms
6	A	9000	TP7	CB-O4P-P-O2P
6	A	9500	TP7	CB-O4P-P-O2P
5	A	700	F43	C3A-CAA-CBA-CCA
5	D	800	F43	C3A-CAA-CBA-CCA
6	A	9500	TP7	O1-C1-N-CA
6	A	9000	TP7	O1-C1-N-CA
8	A	804	GOL	O1-C1-C2-O2
8	A	807	GOL	O1-C1-C2-O2
8	D	805	GOL	O1-C1-C2-O2
8	D	806	GOL	O1-C1-C2-O2
6	A	9500	TP7	C2-C1-N-CA
5	A	700	F43	CAA-CBA-CCA-OEA
5	D	800	F43	CAA-CBA-CCA-OEA
5	D	800	F43	CAA-CBA-CCA-ODA
5	A	700	F43	CAA-CBA-CCA-ODA
8	A	804	GOL	O1-C1-C2-C3
8	A	807	GOL	O1-C1-C2-C3
8	D	805	GOL	O1-C1-C2-C3

Continued on next page...

Continued from previous page...

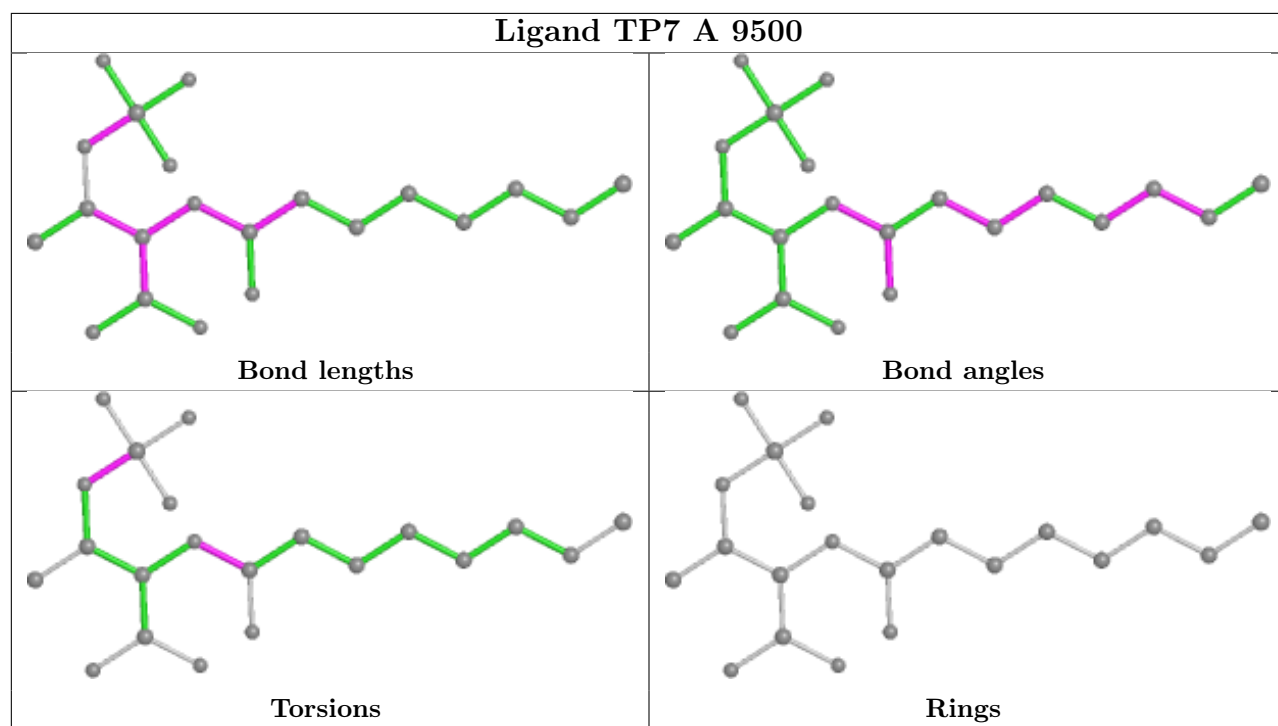
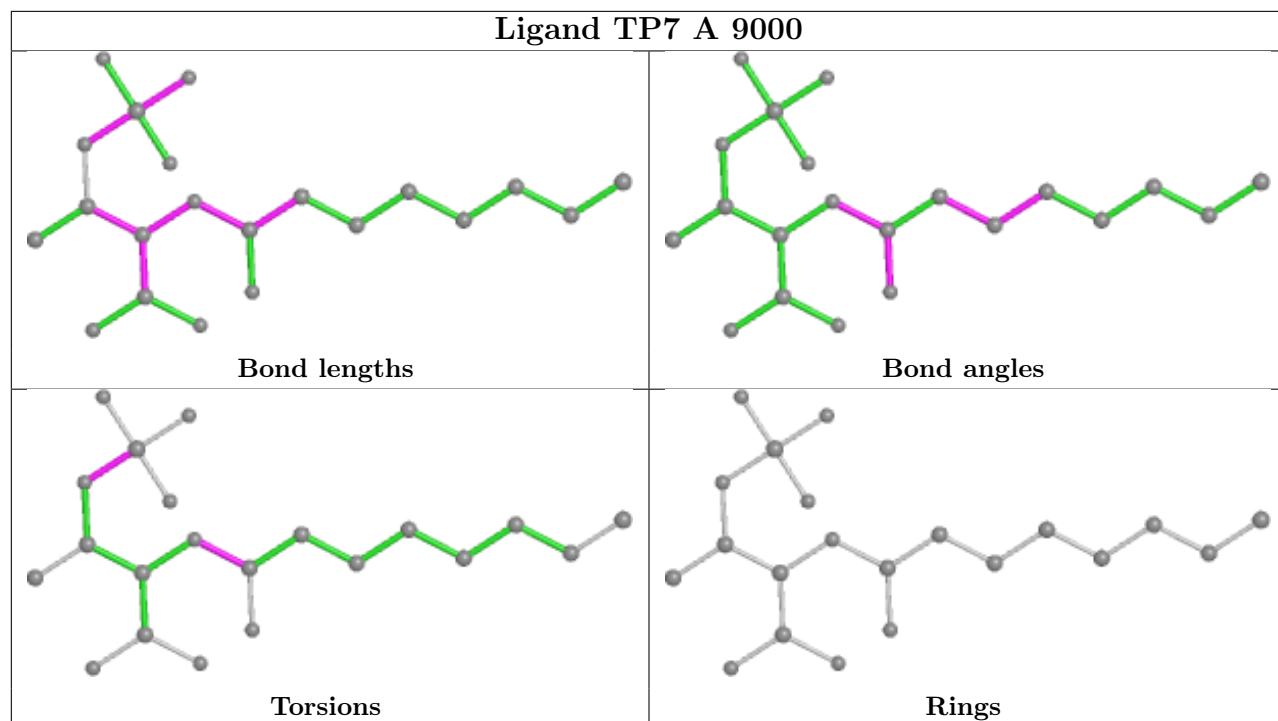
Mol	Chain	Res	Type	Atoms
8	D	806	GOL	O1-C1-C2-C3
5	D	800	F43	CAB-CBB-CCB-OEB
5	A	700	F43	C2C-C5C-C6C-O7C
5	A	700	F43	CAB-CBB-CCB-OEB
5	A	700	F43	CAB-CBB-CCB-ODB
5	A	700	F43	C3D-C9D-CAD- OCD
5	D	800	F43	C2C-C5C-C6C-O8C
5	D	800	F43	CAB-CBB-CCB-ODB
5	D	800	F43	C8C-C9C-CAC-OBC
5	D	800	F43	C8C-C9C-CAC-OCC
5	A	700	F43	C8C-C9C-CAC-OCC
5	A	700	F43	C8C-C9C-CAC-OBC
5	D	800	F43	C2C-C5C-C6C-O7C

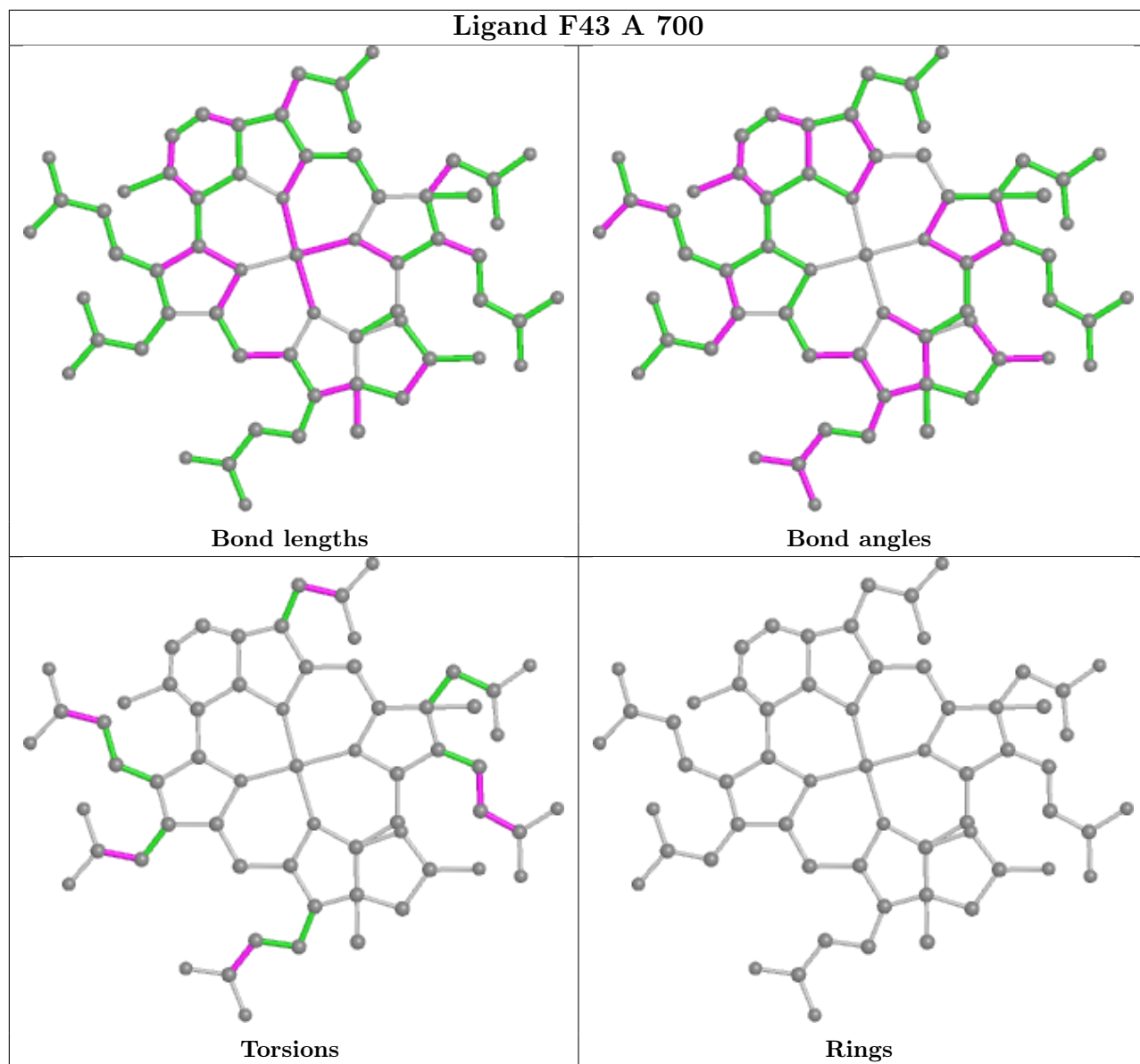
There are no ring outliers.

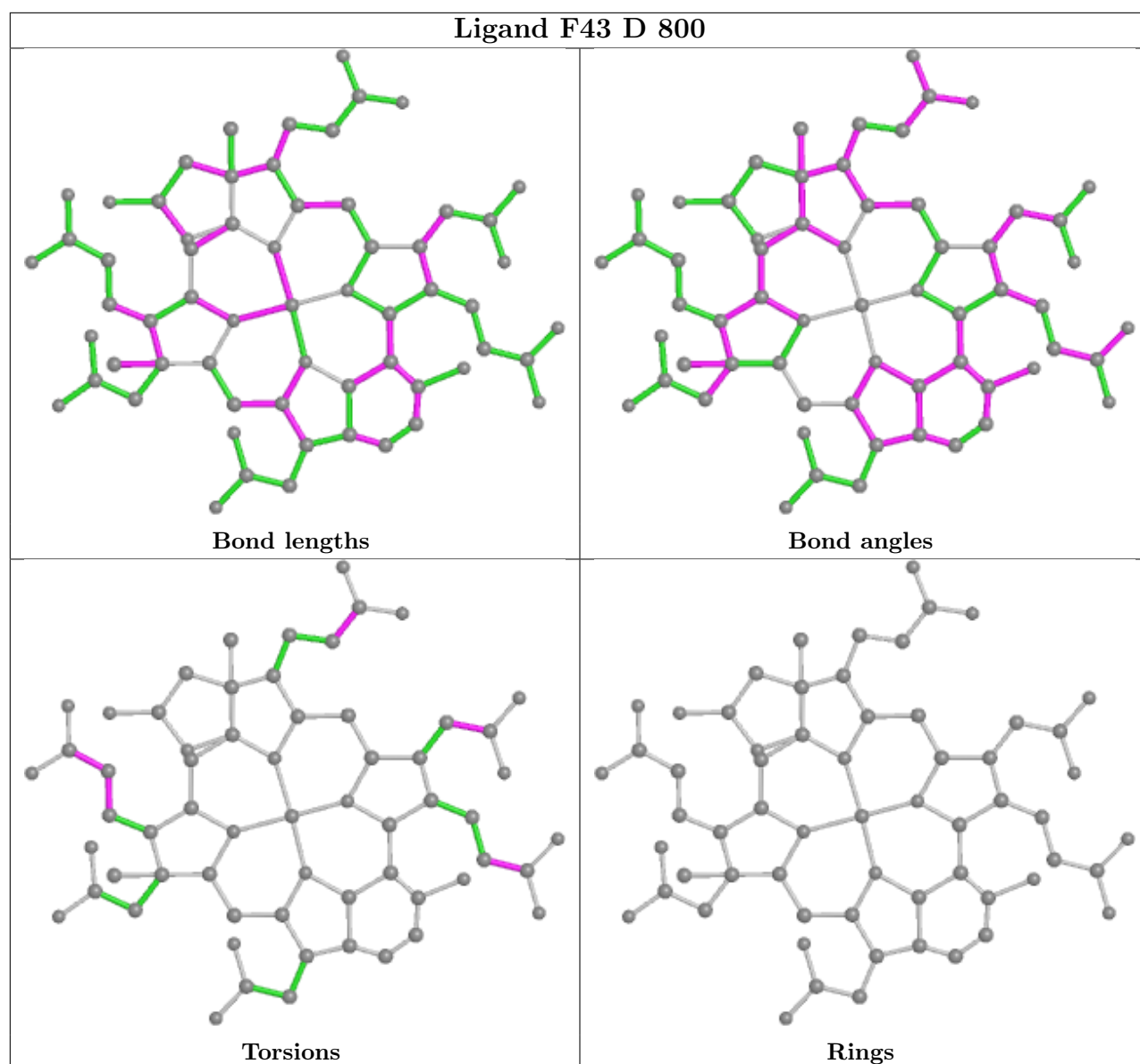
7 monomers are involved in 13 short contacts:

Mol	Chain	Res	Type	Clashes	Symm-Clashes
6	A	9500	TP7	1	0
8	D	806	GOL	3	0
7	D	9700	COM	1	0
8	A	804	GOL	3	0
5	A	700	F43	2	0
5	D	800	F43	2	0
7	A	9800	COM	1	0

The following is a two-dimensional graphical depiction of Mogul quality analysis of bond lengths, bond angles, torsion angles, and ring geometry for all instances of the Ligand of Interest. In addition, ligands with molecular weight > 250 and outliers as shown on the validation Tables will also be included. For torsion angles, if less than 5% of the Mogul distribution of torsion angles is within 10 degrees of the torsion angle in question, then that torsion angle is considered an outlier. Any bond that is central to one or more torsion angles identified as an outlier by Mogul will be highlighted in the graph. For rings, the root-mean-square deviation (RMSD) between the ring in question and similar rings identified by Mogul is calculated over all ring torsion angles. If the average RMSD is greater than 60 degrees and the minimal RMSD between the ring in question and any Mogul-identified rings is also greater than 60 degrees, then that ring is considered an outlier. The outliers are highlighted in purple. The color gray indicates Mogul did not find sufficient equivalents in the CSD to analyse the geometry.







5.7 Other polymers [i](#)

There are no such residues in this entry.

5.8 Polymer linkage issues [i](#)

The following chains have linkage breaks:

Mol	Chain	Number of breaks
1	D	1

All chain breaks are listed below:

Model	Chain	Residue-1	Atom-1	Residue-2	Atom-2	Distance (Å)
1	D	297[B]:TYR	C	298:GLU	N	1.16

6 Fit of model and data [i](#)

6.1 Protein, DNA and RNA chains [i](#)

EDS was not executed - this section is therefore empty.

6.2 Non-standard residues in protein, DNA, RNA chains [i](#)

EDS was not executed - this section is therefore empty.

6.3 Carbohydrates [i](#)

EDS was not executed - this section is therefore empty.

6.4 Ligands [i](#)

EDS was not executed - this section is therefore empty.

6.5 Other polymers [i](#)

EDS was not executed - this section is therefore empty.