



Full wwPDB X-ray Structure Validation Report ⓘ

Jun 16, 2024 – 07:02 AM EDT

PDB ID : 1SVH
Title : Crystal Structure of Protein Kinase A in Complex with Azepane Derivative 8
Authors : Breitenlechner, C.B.; Wegge, T.; Berillon, L.; Graul, K.; Marzenell, K.; Friebe, W.G.; Thomas, U.; Schumacher, R.; Huber, R.; Engh, R.A.; Masjost, B.
Deposited on : 2004-03-29
Resolution : 2.30 Å (reported)

This is a Full wwPDB X-ray Structure Validation Report for a publicly released PDB entry.

We welcome your comments at validation@mail.wwpdb.org

A user guide is available at

<https://www.wwpdb.org/validation/2017/XrayValidationReportHelp>

with specific help available everywhere you see the ⓘ symbol.

The types of validation reports are described at

<http://www.wwpdb.org/validation/2017/FAQs#types>.

The following versions of software and data (see [references ⓘ](#)) were used in the production of this report:

MolProbity : 4.02b-467
Mogul : 2022.3.0, CSD as543be (2022)
Xtrriage (Phenix) : **NOT EXECUTED**
EDS : **NOT EXECUTED**
buster-report : 1.1.7 (2018)
Percentile statistics : 20191225.v01 (using entries in the PDB archive December 25th 2019)
Ideal geometry (proteins) : Engh & Huber (2001)
Ideal geometry (DNA, RNA) : Parkinson et al. (1996)
Validation Pipeline (wwPDB-VP) : 2.37.1

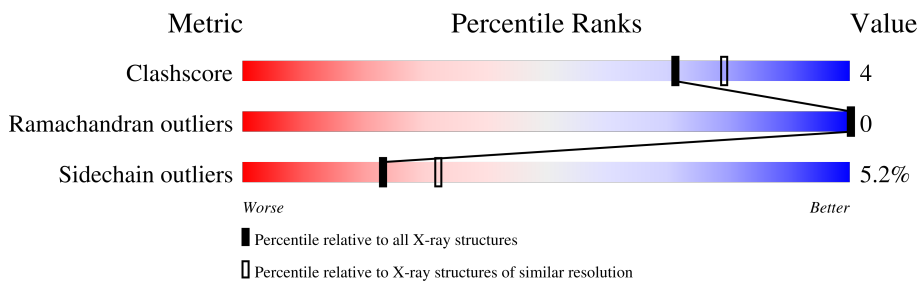
1 Overall quality at a glance i

The following experimental techniques were used to determine the structure:

X-RAY DIFFRACTION

The reported resolution of this entry is 2.30 Å.

Percentile scores (ranging between 0-100) for global validation metrics of the entry are shown in the following graphic. The table shows the number of entries on which the scores are based.



Metric	Whole archive (#Entries)	Similar resolution (#Entries, resolution range(Å))
Clashscore	141614	5643 (2.30-2.30)
Ramachandran outliers	138981	5575 (2.30-2.30)
Sidechain outliers	138945	5575 (2.30-2.30)

The table below summarises the geometric issues observed across the polymeric chains and their fit to the electron density. The red, orange, yellow and green segments of the lower bar indicate the fraction of residues that contain outliers for ≥ 3 , 2, 1 and 0 types of geometric quality criteria respectively. A grey segment represents the fraction of residues that are not modelled. The numeric value for each fraction is indicated below the corresponding segment, with a dot representing fractions $\leq 5\%$.

Note EDS was not executed.

Mol	Chain	Length	Quality of chain
1	A	350	 81% 14% . .
2	B	20	 85% 5% 5% 5%

2 Entry composition

There are 4 unique types of molecules in this entry. The entry contains 3048 atoms, of which 0 are hydrogens and 0 are deuteriums.

In the tables below, the ZeroOcc column contains the number of atoms modelled with zero occupancy, the AltConf column contains the number of residues with at least one atom in alternate conformation and the Trace column contains the number of residues modelled with at most 2 atoms.

- Molecule 1 is a protein called cAMP-dependent protein kinase, alpha-catalytic subunit.

Mol	Chain	Residues	Atoms						ZeroOcc	AltConf	Trace
			Total	C	N	O	P	S			
1	A	337	2713	1757	450	495	2	9	0	0	0

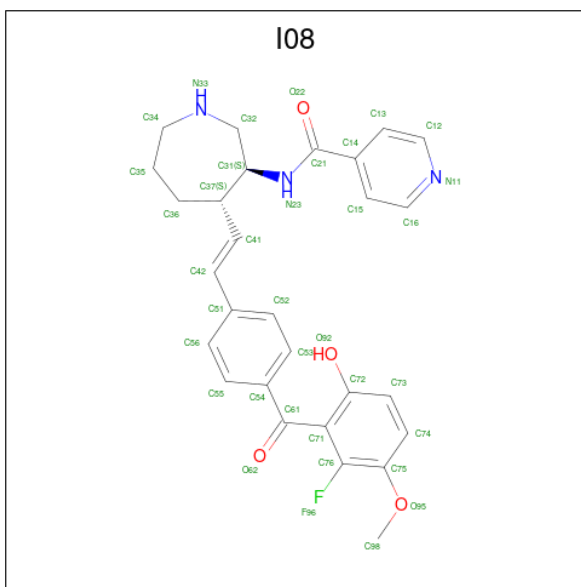
There are 2 discrepancies between the modelled and reference sequences:

Chain	Residue	Modelled	Actual	Comment	Reference
A	197	TPO	THR	MODIFIED RESIDUE	UNP P00517
A	338	SEP	SER	MODIFIED RESIDUE	UNP P00517

- Molecule 2 is a protein called cAMP-dependent protein kinase inhibitor, alpha form.

Mol	Chain	Residues	Atoms				ZeroOcc	AltConf	Trace
			Total	C	N	O			
2	B	19	143	87	29	27	0	0	0

- Molecule 3 is (3R,4S)-N-(4-{TRANS-2-[4-(2-FLUORO-6-HYDROXY-3-METHOXY-BENZOYL)-PHENYL]-VINYL}-AZEPAN-3-YL)-ISONICOTINAMIDE (three-letter code: I08) (formula: C₂₈H₂₈FN₃O₄).



Mol	Chain	Residues	Atoms					ZeroOcc	AltConf
			Total	C	F	N	O		
3	A	1	36	28	1	3	4	0	0

- Molecule 4 is water.

Mol	Chain	Residues	Atoms		ZeroOcc	AltConf
4	A	139	Total	O	0	0
			139	139		
4	B	17	Total	O	0	0
			17	17		

4 Data and refinement statistics

Xtrriage (Phenix) and EDS were not executed - this section is therefore incomplete.

Property	Value	Source
Space group	P 21 21 21	Depositor
Cell constants a, b, c, α , β , γ	73.17Å 79.16Å 80.59Å 90.00° 90.00° 90.00°	Depositor
Resolution (Å)	25.00 – 2.30	Depositor
% Data completeness (in resolution range)	97.9 (25.00-2.30)	Depositor
R_{merge}	(Not available)	Depositor
R_{sym}	0.06	Depositor
Refinement program	REFMAC 5.1.24	Depositor
R, R_{free}	0.212 , 0.259	Depositor
Estimated twinning fraction	No twinning to report.	Xtrriage
Total number of atoms	3048	wwPDB-VP
Average B, all atoms (Å ²)	40.0	wwPDB-VP

5 Model quality [i](#)

5.1 Standard geometry [i](#)

Bond lengths and bond angles in the following residue types are not validated in this section: TPO, SEP, I08

The Z score for a bond length (or angle) is the number of standard deviations the observed value is removed from the expected value. A bond length (or angle) with $|Z| > 5$ is considered an outlier worth inspection. RMSZ is the root-mean-square of all Z scores of the bond lengths (or angles).

Mol	Chain	Bond lengths		Bond angles	
		RMSZ	# Z >5	RMSZ	# Z >5
1	A	0.83	0/2762	0.93	14/3734 (0.4%)
2	B	0.95	0/144	1.17	1/193 (0.5%)
All	All	0.84	0/2906	0.94	15/3927 (0.4%)

There are no bond length outliers.

All (15) bond angle outliers are listed below:

Mol	Chain	Res	Type	Atoms	Z	Observed(°)	Ideal(°)
1	A	267	ASP	CB-CG-OD2	8.04	125.53	118.30
2	B	15	ARG	NE-CZ-NH2	-7.99	116.31	120.30
1	A	56	ARG	NE-CZ-NH2	-7.02	116.79	120.30
1	A	56	ARG	NE-CZ-NH1	6.95	123.77	120.30
1	A	323	ASP	CB-CG-OD2	6.76	124.39	118.30
1	A	134	ARG	NE-CZ-NH1	-6.53	117.03	120.30
1	A	75	ASP	CB-CG-OD2	6.47	124.13	118.30
1	A	175	ASP	CB-CG-OD1	6.33	124.00	118.30
1	A	328	ASP	CB-CG-OD2	6.17	123.85	118.30
1	A	45	ARG	NE-CZ-NH2	-6.06	117.27	120.30
1	A	301	ASP	CB-CG-OD2	5.71	123.44	118.30
1	A	112	ASP	CB-CG-OD2	5.62	123.35	118.30
1	A	41	ASP	CB-CG-OD1	5.49	123.24	118.30
1	A	241	ASP	CB-CG-OD2	5.34	123.11	118.30
1	A	144	ARG	NE-CZ-NH2	-5.16	117.72	120.30

There are no chirality outliers.

There are no planarity outliers.

5.2 Too-close contacts

In the following table, the Non-H and H(model) columns list the number of non-hydrogen atoms and hydrogen atoms in the chain respectively. The H(added) column lists the number of hydrogen atoms added and optimized by MolProbity. The Clashes column lists the number of clashes within the asymmetric unit, whereas Symm-Clashes lists symmetry-related clashes.

Mol	Chain	Non-H	H(model)	H(added)	Clashes	Symm-Clashes
1	A	2713	0	2608	20	0
2	B	143	0	137	1	0
3	A	36	0	27	0	0
4	A	139	0	0	3	0
4	B	17	0	0	0	0
All	All	3048	0	2772	20	0

The all-atom clashscore is defined as the number of clashes found per 1000 atoms (including hydrogen atoms). The all-atom clashscore for this structure is 4.

All (20) close contacts within the same asymmetric unit are listed below, sorted by their clash magnitude.

Atom-1	Atom-2	Interatomic distance (Å)	Clash overlap (Å)
1:A:161:ASP:HA	1:A:217:LYS:HE2	1.84	0.59
1:A:163:ILE:HG22	1:A:165:ARG:HG3	1.89	0.54
1:A:56:ARG:HD2	4:A:475:HOH:O	2.11	0.51
1:A:47:LYS:NZ	4:A:381:HOH:O	2.37	0.50
1:A:138:PHE:HB3	1:A:142:HIS:HB3	1.94	0.50
1:A:203:GLU:OE2	2:B:15:ARG:HD3	2.13	0.48
1:A:77:GLN:NE2	1:A:342:LYS:HD2	2.29	0.47
1:A:236:PRO:HG2	1:A:239:PHE:HB3	1.96	0.47
1:A:84:GLN:OE1	1:A:87:HIS:ND1	2.49	0.46
1:A:335:ILE:HD13	1:A:335:ILE:N	2.30	0.46
1:A:247:TYR:O	1:A:251:VAL:HG13	2.17	0.45
1:A:69:TYR:CE1	1:A:107:GLU:HG3	2.53	0.44
1:A:163:ILE:HD13	1:A:163:ILE:HG21	1.75	0.43
1:A:104:VAL:HG23	1:A:121:GLU:HG2	2.00	0.43
1:A:158:HIS:HE1	1:A:220:ASP:OD2	2.02	0.43
1:A:76:LYS:NZ	1:A:342:LYS:O	2.47	0.43
1:A:54:PHE:CE1	1:A:82:LEU:HD12	2.54	0.42
1:A:40:LEU:HD22	4:A:443:HOH:O	2.19	0.42
1:A:229:TYR:CD1	1:A:229:TYR:C	2.94	0.41
1:A:45:ARG:HA	1:A:60:VAL:HG12	2.03	0.41

There are no symmetry-related clashes.

5.3 Torsion angles [i](#)

5.3.1 Protein backbone [i](#)

In the following table, the Percentiles column shows the percent Ramachandran outliers of the chain as a percentile score with respect to all X-ray entries followed by that with respect to entries of similar resolution.

The Analysed column shows the number of residues for which the backbone conformation was analysed, and the total number of residues.

Mol	Chain	Analysed	Favoured	Allowed	Outliers	Percentiles	
1	A	333/350 (95%)	318 (96%)	15 (4%)	0	100	100
2	B	17/20 (85%)	17 (100%)	0	0	100	100
All	All	350/370 (95%)	335 (96%)	15 (4%)	0	100	100

There are no Ramachandran outliers to report.

5.3.2 Protein sidechains [i](#)

In the following table, the Percentiles column shows the percent sidechain outliers of the chain as a percentile score with respect to all X-ray entries followed by that with respect to entries of similar resolution.

The Analysed column shows the number of residues for which the sidechain conformation was analysed, and the total number of residues.

Mol	Chain	Analysed	Rotameric	Outliers	Percentiles	
1	A	277/303 (91%)	263 (95%)	14 (5%)	24	33
2	B	13/15 (87%)	12 (92%)	1 (8%)	13	16
All	All	290/318 (91%)	275 (95%)	15 (5%)	23	32

All (15) residues with a non-rotameric sidechain are listed below:

Mol	Chain	Res	Type
1	A	15	VAL
1	A	40	LEU
1	A	59	LEU
1	A	160	LEU
1	A	173	LEU
1	A	191	VAL
1	A	198	LEU
1	A	217	LYS

Continued on next page...

Continued from previous page...

Mol	Chain	Res	Type
1	A	242	GLN
1	A	251	VAL
1	A	263	SER
1	A	268	LEU
1	A	295	LYS
1	A	335	ILE
2	B	22	ILE

Sometimes sidechains can be flipped to improve hydrogen bonding and reduce clashes. All (5) such sidechains are listed below:

Mol	Chain	Res	Type
1	A	42	GLN
1	A	62	HIS
1	A	77	GLN
1	A	158	HIS
1	A	289	ASN

5.3.3 RNA [i](#)

There are no RNA molecules in this entry.

5.4 Non-standard residues in protein, DNA, RNA chains [i](#)

2 non-standard protein/DNA/RNA residues are modelled in this entry.

In the following table, the Counts columns list the number of bonds (or angles) for which Mogul statistics could be retrieved, the number of bonds (or angles) that are observed in the model and the number of bonds (or angles) that are defined in the Chemical Component Dictionary. The Link column lists molecule types, if any, to which the group is linked. The Z score for a bond length (or angle) is the number of standard deviations the observed value is removed from the expected value. A bond length (or angle) with $|Z| > 2$ is considered an outlier worth inspection. RMSZ is the root-mean-square of all Z scores of the bond lengths (or angles).

Mol	Type	Chain	Res	Link	Bond lengths			Bond angles		
					Counts	RMSZ	$\# Z > 2$	Counts	RMSZ	$\# Z > 2$
1	SEP	A	338	1	8,9,10	1.28	1 (12%)	7,12,14	2.73	2 (28%)
1	TPO	A	197	1	8,10,11	1.18	1 (12%)	10,14,16	1.48	2 (20%)

In the following table, the Chirals column lists the number of chiral outliers, the number of chiral centers analysed, the number of these observed in the model and the number defined in the Chemical Component Dictionary. Similar counts are reported in the Torsion and Rings columns.

'-' means no outliers of that kind were identified.

Mol	Type	Chain	Res	Link	Chirals	Torsions	Rings
1	SEP	A	338	1	-	3/6/8/10	-
1	TPO	A	197	1	-	1/9/11/13	-

All (2) bond length outliers are listed below:

Mol	Chain	Res	Type	Atoms	Z	Observed(Å)	Ideal(Å)
1	A	197	TPO	P-O1P	2.49	1.58	1.50
1	A	338	SEP	P-O1P	2.48	1.58	1.50

All (4) bond angle outliers are listed below:

Mol	Chain	Res	Type	Atoms	Z	Observed(°)	Ideal(°)
1	A	338	SEP	OG-CB-CA	6.09	114.07	108.14
1	A	338	SEP	OG-P-O1P	2.96	114.45	106.44
1	A	197	TPO	O3P-P-OG1	2.64	116.12	105.85
1	A	197	TPO	O2P-P-OG1	2.13	114.14	105.85

There are no chirality outliers.

All (4) torsion outliers are listed below:

Mol	Chain	Res	Type	Atoms
1	A	338	SEP	CA-CB-OG-P
1	A	338	SEP	CB-OG-P-O2P
1	A	338	SEP	N-CA-CB-OG
1	A	197	TPO	O-C-CA-CB

There are no ring outliers.

No monomer is involved in short contacts.

5.5 Carbohydrates [i](#)

There are no monosaccharides in this entry.

5.6 Ligand geometry [i](#)

1 ligand is modelled in this entry.

In the following table, the Counts columns list the number of bonds (or angles) for which Mogul statistics could be retrieved, the number of bonds (or angles) that are observed in the model and

the number of bonds (or angles) that are defined in the Chemical Component Dictionary. The Link column lists molecule types, if any, to which the group is linked. The Z score for a bond length (or angle) is the number of standard deviations the observed value is removed from the expected value. A bond length (or angle) with $|Z| > 2$ is considered an outlier worth inspection. RMSZ is the root-mean-square of all Z scores of the bond lengths (or angles).

Mol	Type	Chain	Res	Link	Bond lengths			Bond angles		
					Counts	RMSZ	# Z > 2	Counts	RMSZ	# Z > 2
3	I08	A	351	-	38,39,39	1.62	11 (28%)	43,53,53	1.62	11 (25%)

In the following table, the Chirals column lists the number of chiral outliers, the number of chiral centers analysed, the number of these observed in the model and the number defined in the Chemical Component Dictionary. Similar counts are reported in the Torsion and Rings columns. '-' means no outliers of that kind were identified.

Mol	Type	Chain	Res	Link	Chirals	Torsions	Rings
3	I08	A	351	-	-	2/23/35/35	0/4/4/4

All (11) bond length outliers are listed below:

Mol	Chain	Res	Type	Atoms	Z	Observed(Å)	Ideal(Å)
3	A	351	I08	C75-C76	-2.94	1.35	1.39
3	A	351	I08	C54-C61	-2.92	1.44	1.49
3	A	351	I08	O92-C72	-2.84	1.30	1.36
3	A	351	I08	C71-C61	-2.84	1.44	1.50
3	A	351	I08	C52-C51	2.73	1.45	1.39
3	A	351	I08	C55-C54	2.32	1.42	1.39
3	A	351	I08	C21-N23	2.24	1.39	1.34
3	A	351	I08	O95-C75	2.23	1.40	1.37
3	A	351	I08	C73-C72	2.13	1.43	1.39
3	A	351	I08	C14-C21	-2.08	1.45	1.50
3	A	351	I08	C12-N11	2.06	1.39	1.33

All (11) bond angle outliers are listed below:

Mol	Chain	Res	Type	Atoms	Z	Observed(°)	Ideal(°)
3	A	351	I08	C71-C61-C54	3.32	124.50	119.24
3	A	351	I08	O95-C75-C76	3.31	118.79	116.28
3	A	351	I08	C73-C72-C71	-3.04	116.27	120.15
3	A	351	I08	C14-C21-N23	2.97	122.55	117.04
3	A	351	I08	O22-C21-N23	-2.87	117.02	122.47
3	A	351	I08	C15-C16-N11	-2.31	119.65	123.60
3	A	351	I08	C53-C54-C55	2.20	121.37	118.57
3	A	351	I08	C52-C53-C54	-2.20	118.45	120.80

Continued on next page...

Continued from previous page...

Mol	Chain	Res	Type	Atoms	Z	Observed(°)	Ideal(°)
3	A	351	I08	C13-C12-N11	-2.20	119.85	123.60
3	A	351	I08	C36-C35-C34	-2.14	109.22	114.69
3	A	351	I08	C32-C31-N23	-2.07	105.71	109.55

There are no chirality outliers.

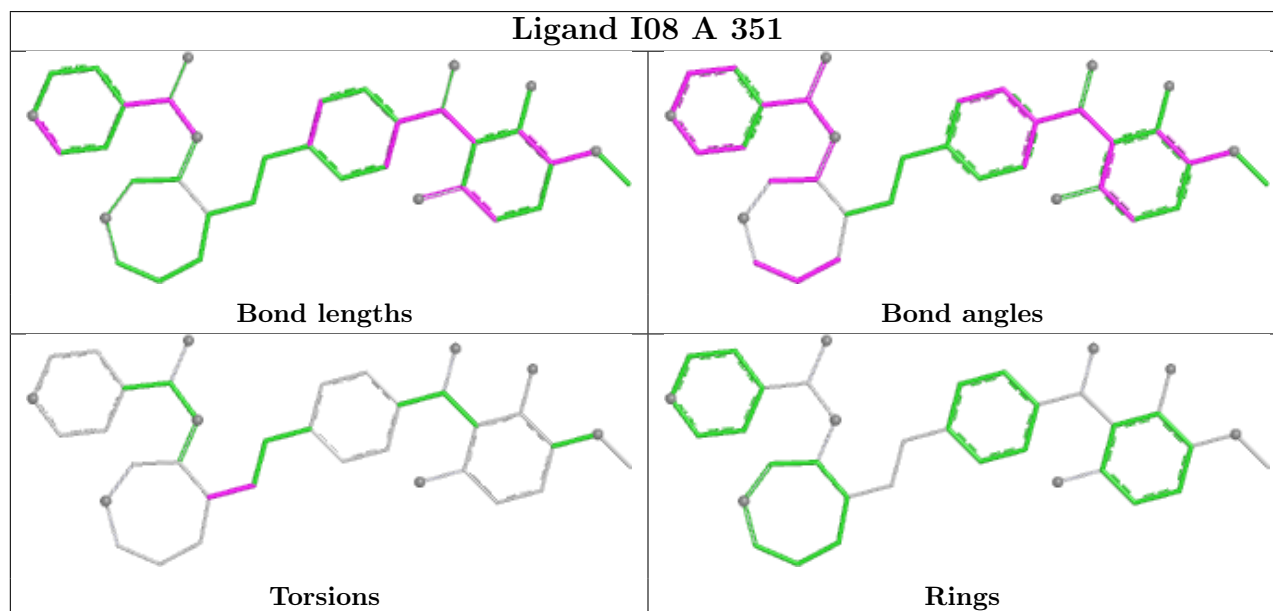
All (2) torsion outliers are listed below:

Mol	Chain	Res	Type	Atoms
3	A	351	I08	C31-C37-C41-C42
3	A	351	I08	C36-C37-C41-C42

There are no ring outliers.

No monomer is involved in short contacts.

The following is a two-dimensional graphical depiction of Mogul quality analysis of bond lengths, bond angles, torsion angles, and ring geometry for all instances of the Ligand of Interest. In addition, ligands with molecular weight > 250 and outliers as shown on the validation Tables will also be included. For torsion angles, if less than 5% of the Mogul distribution of torsion angles is within 10 degrees of the torsion angle in question, then that torsion angle is considered an outlier. Any bond that is central to one or more torsion angles identified as an outlier by Mogul will be highlighted in the graph. For rings, the root-mean-square deviation (RMSD) between the ring in question and similar rings identified by Mogul is calculated over all ring torsion angles. If the average RMSD is greater than 60 degrees and the minimal RMSD between the ring in question and any Mogul-identified rings is also greater than 60 degrees, then that ring is considered an outlier. The outliers are highlighted in purple. The color gray indicates Mogul did not find sufficient equivalents in the CSD to analyse the geometry.



5.7 Other polymers [i](#)

There are no such residues in this entry.

5.8 Polymer linkage issues [i](#)

There are no chain breaks in this entry.

6 Fit of model and data

6.1 Protein, DNA and RNA chains

EDS was not executed - this section is therefore empty.

6.2 Non-standard residues in protein, DNA, RNA chains

EDS was not executed - this section is therefore empty.

6.3 Carbohydrates

EDS was not executed - this section is therefore empty.

6.4 Ligands

EDS was not executed - this section is therefore empty.

6.5 Other polymers

EDS was not executed - this section is therefore empty.