



Full wwPDB X-ray Structure Validation Report ⓘ

Mar 5, 2024 – 01:46 AM EST

PDB ID : 1WXZ
Title : Crystal structure of adenosine deaminase ligated with a potent inhibitor
Authors : Kinoshita, T.
Deposited on : 2005-02-02
Resolution : 2.80 Å(reported)

This is a Full wwPDB X-ray Structure Validation Report for a publicly released PDB entry.

We welcome your comments at validation@mail.wwpdb.org

A user guide is available at

<https://www.wwpdb.org/validation/2017/XrayValidationReportHelp>

with specific help available everywhere you see the ⓘ symbol.

The types of validation reports are described at

<http://www.wwpdb.org/validation/2017/FAQs#types>.

The following versions of software and data (see [references ⓘ](#)) were used in the production of this report:

MolProbity : 4.02b-467
Mogul : 1.8.5 (274361), CSD as541be (2020)
Xtriage (Phenix) : 1.13
EDS : 2.36
buster-report : 1.1.7 (2018)
Percentile statistics : 20191225.v01 (using entries in the PDB archive December 25th 2019)
Refmac : 5.8.0158
CCP4 : 7.0.044 (Gargrove)
Ideal geometry (proteins) : Engh & Huber (2001)
Ideal geometry (DNA, RNA) : Parkinson et al. (1996)
Validation Pipeline (wwPDB-VP) : 2.36

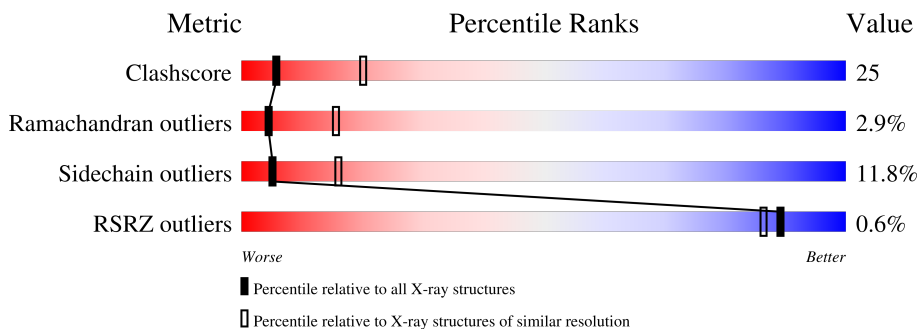
1 Overall quality at a glance

The following experimental techniques were used to determine the structure:

X-RAY DIFFRACTION

The reported resolution of this entry is 2.80 Å.

Percentile scores (ranging between 0-100) for global validation metrics of the entry are shown in the following graphic. The table shows the number of entries on which the scores are based.



Metric	Whole archive (#Entries)	Similar resolution (#Entries, resolution range(Å))
Clashscore	141614	3569 (2.80-2.80)
Ramachandran outliers	138981	3498 (2.80-2.80)
Sidechain outliers	138945	3500 (2.80-2.80)
RSRZ outliers	127900	3078 (2.80-2.80)

The table below summarises the geometric issues observed across the polymeric chains and their fit to the electron density. The red, orange, yellow and green segments of the lower bar indicate the fraction of residues that contain outliers for ≥ 3 , 2, 1 and 0 types of geometric quality criteria respectively. A grey segment represents the fraction of residues that are not modelled. The numeric value for each fraction is indicated below the corresponding segment, with a dot representing fractions $\leq 5\%$. The upper red bar (where present) indicates the fraction of residues that have poor fit to the electron density. The numeric value is given above the bar.

Mol	Chain	Length	Quality of chain
1	A	356	

The following table lists non-polymeric compounds, carbohydrate monomers and non-standard residues in protein, DNA, RNA chains that are outliers for geometric or electron-density-fit criteria:

Mol	Type	Chain	Res	Chirality	Geometry	Clashes	Electron density
3	FRL	A	401	X	-	-	-

2 Entry composition

There are 4 unique types of molecules in this entry. The entry contains 2958 atoms, of which 0 are hydrogens and 0 are deuteriums.

In the tables below, the ZeroOcc column contains the number of atoms modelled with zero occupancy, the AltConf column contains the number of residues with at least one atom in alternate conformation and the Trace column contains the number of residues modelled with at most 2 atoms.

- Molecule 1 is a protein called Adenosine deaminase.

Mol	Chain	Residues	Atoms					ZeroOcc	AltConf	Trace
			Total	C	N	O	S			
1	A	349	2789	1772	471	534	12	0	0	0

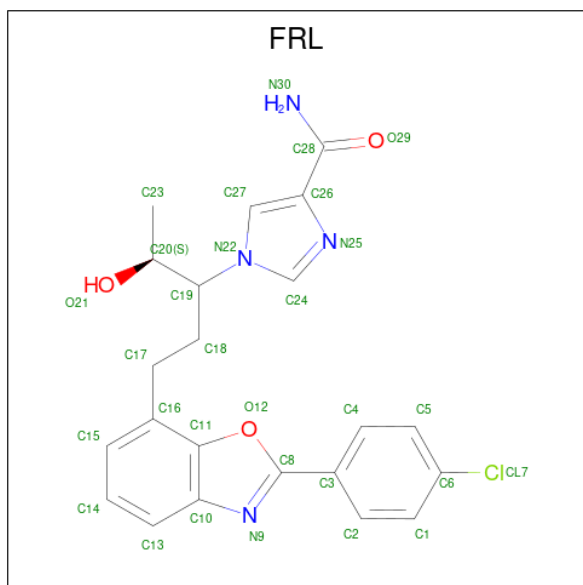
There are 15 discrepancies between the modelled and reference sequences:

Chain	Residue	Modelled	Actual	Comment	Reference
A	8	ASP	ASN	SEE REMARK 999	UNP P56658
A	32	LYS	ARG	SEE REMARK 999	UNP P56658
A	33	ARG	LYS	SEE REMARK 999	UNP P56658
A	57	THR	SER	SEE REMARK 999	UNP P56658
A	60	ASP	GLU	SEE REMARK 999	UNP P56658
A	77	ASP	GLU	SEE REMARK 999	UNP P56658
A	79	ILE	VAL	SEE REMARK 999	UNP P56658
A	199	GLN	LYS	SEE REMARK 999	UNP P56658
A	246	THR	ALA	SEE REMARK 999	UNP P56658
A	261	ILE	VAL	SEE REMARK 999	UNP P56658
A	279	ALA	PRO	SEE REMARK 999	UNP P56658
A	281	ILE	VAL	SEE REMARK 999	UNP P56658
A	313	LYS	ASN	SEE REMARK 999	UNP P56658
A	314	ASP	GLU	SEE REMARK 999	UNP P56658
A	352	ARG	GLY	SEE REMARK 999	UNP P56658

- Molecule 2 is ZINC ION (three-letter code: ZN) (formula: Zn).

Mol	Chain	Residues	Atoms		ZeroOcc	AltConf
2	A	1	Total	Zn	0	0
			1	1		

- Molecule 3 is 1-((1R,2S)-1-{2-[2-(4-CHLOROPHENYL)-1,3-BENZOXAZOL-7-YL]ETHYL}-2-HYDROXYPROPYL)-1H-IMIDAZOLE-4-CARBOXAMIDE (three-letter code: FRL) (formula: C₂₂H₂₁ClN₄O₃).



Mol	Chain	Residues	Atoms				ZeroOcc	AltConf	
			Total	C	Cl	N			O
3	A	1	30	22	1	4	3	0	0

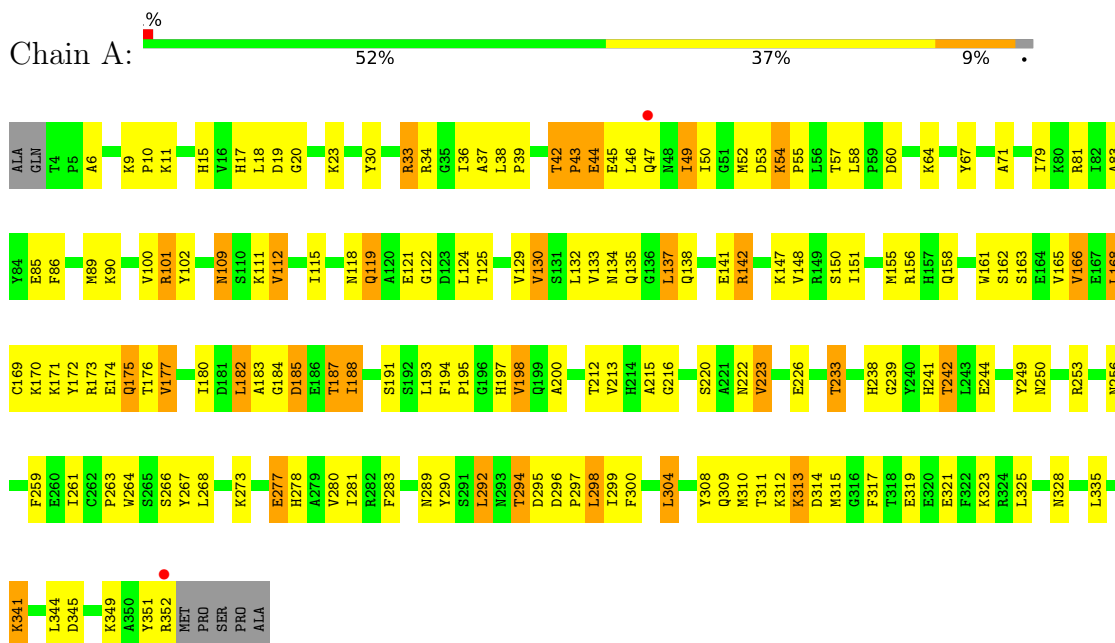
- Molecule 4 is water.

Mol	Chain	Residues	Atoms		ZeroOcc	AltConf
4	A	138	Total	O	0	0
			138	138		

3 Residue-property plots [i](#)

These plots are drawn for all protein, RNA, DNA and oligosaccharide chains in the entry. The first graphic for a chain summarises the proportions of the various outlier classes displayed in the second graphic. The second graphic shows the sequence view annotated by issues in geometry and electron density. Residues are color-coded according to the number of geometric quality criteria for which they contain at least one outlier: green = 0, yellow = 1, orange = 2 and red = 3 or more. A red dot above a residue indicates a poor fit to the electron density ($RSRZ > 2$). Stretches of 2 or more consecutive residues without any outlier are shown as a green connector. Residues present in the sample, but not in the model, are shown in grey.

- Molecule 1: Adenosine deaminase



4 Data and refinement statistics

Property	Value	Source
Space group	P 43 21 2	Depositor
Cell constants a, b, c, α , β , γ	77.80Å 77.80Å 137.40Å 90.00° 90.00° 90.00°	Depositor
Resolution (Å)	37.43 – 2.80 37.43 – 2.50	Depositor EDS
% Data completeness (in resolution range)	97.4 (37.43-2.80) 98.1 (37.43-2.50)	Depositor EDS
R_{merge}	(Not available)	Depositor
R_{sym}	(Not available)	Depositor
$\langle I/\sigma(I) \rangle$ ¹	3.73 (at 2.51Å)	Xtrriage
Refinement program	CNX 2002	Depositor
R, R_{free}	0.215 , 0.223 0.214 , (Not available)	Depositor DCC
R_{free} test set	No test flags present.	wwPDB-VP
Wilson B-factor (Å ²)	33.9	Xtrriage
Anisotropy	0.388	Xtrriage
Bulk solvent k_{sol} (e/Å ³), B_{sol} (Å ²)	0.31 , 54.5	EDS
L-test for twinning ²	$\langle L \rangle = 0.49$, $\langle L^2 \rangle = 0.32$	Xtrriage
Estimated twinning fraction	No twinning to report.	Xtrriage
F_o, F_c correlation	0.92	EDS
Total number of atoms	2958	wwPDB-VP
Average B, all atoms (Å ²)	35.0	wwPDB-VP

Xtrriage's analysis on translational NCS is as follows: *The largest off-origin peak in the Patterson function is 4.11% of the height of the origin peak. No significant pseudotranslation is detected.*

¹Intensities estimated from amplitudes.

²Theoretical values of $\langle |L| \rangle$, $\langle L^2 \rangle$ for acentric reflections are 0.5, 0.333 respectively for untwinned datasets, and 0.375, 0.2 for perfectly twinned datasets.

5 Model quality [i](#)

5.1 Standard geometry [i](#)

Bond lengths and bond angles in the following residue types are not validated in this section: FRL, ZN

The Z score for a bond length (or angle) is the number of standard deviations the observed value is removed from the expected value. A bond length (or angle) with $|Z| > 5$ is considered an outlier worth inspection. RMSZ is the root-mean-square of all Z scores of the bond lengths (or angles).

Mol	Chain	Bond lengths		Bond angles	
		RMSZ	# Z >5	RMSZ	# Z >5
1	A	0.62	2/2853 (0.1%)	0.91	4/3867 (0.1%)

All (2) bond length outliers are listed below:

Mol	Chain	Res	Type	Atoms	Z	Observed(Å)	Ideal(Å)
1	A	47	GLN	CG-CD	-26.80	0.89	1.51
1	A	47	GLN	CB-CG	6.02	1.68	1.52

All (4) bond angle outliers are listed below:

Mol	Chain	Res	Type	Atoms	Z	Observed(°)	Ideal(°)
1	A	47	GLN	CG-CD-OE1	23.27	168.14	121.60
1	A	47	GLN	CG-CD-NE2	-23.13	61.18	116.70
1	A	47	GLN	CA-CB-CG	19.53	156.37	113.40
1	A	47	GLN	CB-CG-CD	14.22	148.57	111.60

There are no chirality outliers.

There are no planarity outliers.

5.2 Too-close contacts [i](#)

In the following table, the Non-H and H(model) columns list the number of non-hydrogen atoms and hydrogen atoms in the chain respectively. The H(added) column lists the number of hydrogen atoms added and optimized by MolProbity. The Clashes column lists the number of clashes within the asymmetric unit, whereas Symm-Clashes lists symmetry-related clashes.

Mol	Chain	Non-H	H(model)	H(added)	Clashes	Symm-Clashes
1	A	2789	0	2743	142	0
2	A	1	0	0	0	0

Continued on next page...

Continued from previous page...

Mol	Chain	Non-H	H(model)	H(added)	Clashes	Symm-Clashes
3	A	30	0	20	1	0
4	A	138	0	0	10	0
All	All	2958	0	2763	142	0

The all-atom clashscore is defined as the number of clashes found per 1000 atoms (including hydrogen atoms). The all-atom clashscore for this structure is 25.

All (142) close contacts within the same asymmetric unit are listed below, sorted by their clash magnitude.

Atom-1	Atom-2	Interatomic distance (Å)	Clash overlap (Å)
1:A:277:GLU:HB2	1:A:281:ILE:HD11	1.37	1.04
1:A:79:ILE:HD13	1:A:129:VAL:HG13	1.55	0.89
1:A:267:TYR:HD1	1:A:268:LEU:HD22	1.45	0.81
1:A:141:GLU:OE2	1:A:147:LYS:HA	1.86	0.74
1:A:341:LYS:HA	1:A:341:LYS:HE3	1.68	0.74
1:A:188:ILE:HG12	1:A:191:SER:HB3	1.70	0.73
1:A:38:LEU:HB3	1:A:39:PRO:HD2	1.69	0.73
1:A:33:ARG:HB3	1:A:33:ARG:HH11	1.52	0.72
1:A:277:GLU:HB2	1:A:281:ILE:CD1	2.17	0.72
1:A:277:GLU:CB	1:A:281:ILE:HD11	2.17	0.72
1:A:220:SER:O	1:A:223:VAL:HG13	1.89	0.71
1:A:134:ASN:O	1:A:138:GLN:HG3	1.91	0.69
1:A:90:LYS:HE2	1:A:90:LYS:HA	1.75	0.68
1:A:313:LYS:HA	1:A:313:LYS:HE3	1.76	0.67
1:A:36:ILE:HD12	1:A:71:ALA:HA	1.77	0.67
1:A:173:ARG:O	1:A:174:GLU:HB2	1.94	0.67
1:A:309:GLN:O	1:A:313:LYS:HG2	1.95	0.66
1:A:158:GLN:HG2	1:A:161:TRP:CE2	2.30	0.66
1:A:273:LYS:HG2	4:A:444:HOH:O	1.95	0.65
1:A:250:ASN:HB3	4:A:439:HOH:O	1.96	0.65
1:A:150:SER:O	1:A:177:VAL:HA	1.97	0.64
1:A:304:LEU:HD22	1:A:308:TYR:HE1	1.62	0.63
1:A:261:ILE:HD11	1:A:283:PHE:HD2	1.64	0.63
1:A:185:ASP:OD2	1:A:188:ILE:HG22	1.98	0.63
1:A:55:PRO:HD3	1:A:267:TYR:CE1	2.34	0.62
1:A:9:LYS:HB3	1:A:10:PRO:HD2	1.80	0.62
1:A:57:THR:HG21	4:A:472:HOH:O	1.98	0.62
1:A:351:TYR:O	1:A:352:ARG:HD2	1.99	0.62
1:A:213:VAL:HG23	1:A:233:THR:HG23	1.81	0.62
1:A:244:GLU:HB3	4:A:478:HOH:O	2.00	0.62
1:A:39:PRO:HG3	1:A:49:ILE:HD12	1.81	0.61

Continued on next page...

Continued from previous page...

Atom-1	Atom-2	Interatomic distance (Å)	Clash overlap (Å)
1:A:188:ILE:HD11	1:A:194:PHE:CZ	2.36	0.61
1:A:312:LYS:HA	1:A:317:PHE:H	1.66	0.61
1:A:351:TYR:C	1:A:352:ARG:HD2	2.21	0.60
1:A:304:LEU:HD22	1:A:308:TYR:CE1	2.37	0.60
1:A:81:ARG:HD3	4:A:471:HOH:O	2.02	0.59
1:A:83:ALA:HB1	1:A:137:LEU:HD13	1.83	0.59
1:A:132:LEU:HD23	1:A:135:GLN:OE1	2.02	0.59
1:A:33:ARG:HB3	1:A:33:ARG:NH1	2.18	0.59
1:A:49:ILE:C	1:A:49:ILE:HD13	2.23	0.58
1:A:215:ALA:O	1:A:239:GLY:HA2	2.04	0.58
1:A:239:GLY:O	1:A:242:THR:CG2	2.51	0.58
1:A:170:LYS:HA	1:A:173:ARG:HG3	1.86	0.57
1:A:49:ILE:HD11	1:A:67:TYR:CZ	2.40	0.57
1:A:142:ARG:HD3	4:A:417:HOH:O	2.04	0.56
1:A:292:LEU:HD13	1:A:325:LEU:HD11	1.87	0.56
1:A:30:TYR:O	1:A:34:ARG:HG3	2.06	0.56
1:A:261:ILE:HD11	1:A:283:PHE:CD2	2.41	0.56
1:A:44:GLU:H	1:A:44:GLU:CD	2.10	0.55
1:A:261:ILE:HD12	1:A:290:TYR:CD2	2.41	0.54
1:A:169:CYS:HA	1:A:177:VAL:HG21	1.89	0.54
1:A:101:ARG:HA	1:A:151:ILE:O	2.07	0.54
1:A:111:LYS:HE3	4:A:432:HOH:O	2.07	0.54
1:A:42:THR:HB	1:A:45:GLU:CG	2.37	0.54
1:A:266:SER:OG	1:A:278:HIS:HE1	1.90	0.53
1:A:194:PHE:O	1:A:198:VAL:HG12	2.08	0.53
1:A:185:ASP:OD2	1:A:187:THR:HG22	2.08	0.53
1:A:79:ILE:CD1	1:A:129:VAL:HG13	2.34	0.53
1:A:183:ALA:HA	4:A:499:HOH:O	2.10	0.53
1:A:278:HIS:HD2	1:A:280:VAL:H	1.55	0.52
1:A:55:PRO:HD3	1:A:267:TYR:CZ	2.44	0.52
1:A:239:GLY:O	1:A:242:THR:HG23	2.09	0.52
1:A:101:ARG:HD2	4:A:419:HOH:O	2.09	0.52
1:A:292:LEU:HD21	1:A:311:THR:HG21	1.92	0.52
1:A:212:THR:HA	1:A:233:THR:HG22	1.92	0.51
1:A:263:PRO:HB2	1:A:310:MET:HE2	1.93	0.51
1:A:278:HIS:CD2	1:A:280:VAL:H	2.29	0.51
1:A:109:ASN:HD21	1:A:122:GLY:HA3	1.76	0.51
1:A:175:GLN:O	1:A:176:THR:OG1	2.19	0.51
1:A:241:HIS:O	1:A:244:GLU:HG2	2.10	0.50
1:A:289:ASN:OD1	1:A:328:ASN:HB3	2.12	0.50
1:A:222:ASN:O	1:A:226:GLU:HG3	2.12	0.50

Continued on next page...

Continued from previous page...

Atom-1	Atom-2	Interatomic distance (Å)	Clash overlap (Å)
1:A:249:TYR:CE1	1:A:253:ARG:HD2	2.46	0.50
1:A:130:VAL:HG11	1:A:168:LEU:HG	1.94	0.49
1:A:278:HIS:O	1:A:281:ILE:HG12	2.13	0.49
1:A:263:PRO:O	1:A:310:MET:HE1	2.13	0.49
1:A:81:ARG:HD2	1:A:85:GLU:OE1	2.14	0.48
1:A:85:GLU:O	1:A:89:MET:HG3	2.14	0.48
1:A:125:THR:O	1:A:129:VAL:HG23	2.14	0.48
1:A:162:SER:OG	1:A:197:HIS:HD2	1.97	0.48
1:A:298:LEU:C	1:A:298:LEU:CD2	2.82	0.48
1:A:264:TRP:CE2	1:A:268:LEU:HD21	2.49	0.48
1:A:38:LEU:N	1:A:38:LEU:HD22	2.29	0.48
1:A:177:VAL:HG22	1:A:177:VAL:O	2.14	0.47
1:A:188:ILE:HD11	1:A:194:PHE:HZ	1.76	0.47
1:A:46:LEU:O	1:A:50:ILE:HG12	2.15	0.47
1:A:263:PRO:HB2	1:A:310:MET:CE	2.45	0.47
1:A:89:MET:HG2	4:A:463:HOH:O	2.14	0.47
1:A:161:TRP:O	1:A:165:VAL:HG23	2.14	0.47
1:A:184:GLY:O	1:A:185:ASP:HB3	2.14	0.46
1:A:118:ASN:O	1:A:119:GLN:O	2.33	0.46
1:A:137:LEU:HG	1:A:148:VAL:HG11	1.97	0.46
1:A:166:VAL:HG11	1:A:200:ALA:O	2.15	0.46
1:A:17:HIS:CD2	1:A:295:ASP:OD2	2.69	0.46
1:A:50:ILE:HD11	1:A:298:LEU:HD21	1.98	0.46
1:A:242:THR:HG21	1:A:259:PHE:HE2	1.80	0.46
1:A:129:VAL:O	1:A:133:VAL:HG23	2.16	0.46
1:A:42:THR:HB	1:A:45:GLU:HG2	1.97	0.46
1:A:58:LEU:HD21	3:A:401:FRL:H1	1.98	0.46
1:A:170:LYS:O	1:A:173:ARG:HG3	2.16	0.45
1:A:171:LYS:HE2	1:A:172:TYR:CZ	2.50	0.45
1:A:314:ASP:O	1:A:315:MET:HG3	2.16	0.45
1:A:166:VAL:HG13	1:A:180:ILE:HD12	1.99	0.45
1:A:294:THR:HG23	1:A:297:PRO:HD3	1.99	0.45
1:A:133:VAL:O	1:A:137:LEU:HB2	2.16	0.45
1:A:155:MET:HE3	1:A:184:GLY:HA3	1.98	0.45
1:A:64:LYS:HG2	1:A:299:ILE:HG23	1.99	0.45
1:A:345:ASP:OD2	1:A:349:LYS:HE3	2.16	0.45
1:A:11:LYS:HD2	1:A:304:LEU:HD13	1.99	0.44
1:A:42:THR:HG22	1:A:44:GLU:OE2	2.17	0.44
1:A:156:ARG:O	1:A:197:HIS:HE1	1.99	0.44
1:A:188:ILE:HD11	1:A:194:PHE:CE2	2.52	0.44
1:A:112:VAL:HG13	1:A:115:ILE:HG12	1.99	0.44

Continued on next page...

Continued from previous page...

Atom-1	Atom-2	Interatomic distance (Å)	Clash overlap (Å)
1:A:264:TRP:CZ2	1:A:268:LEU:HD21	2.52	0.44
1:A:277:GLU:CG	1:A:281:ILE:HD11	2.47	0.44
1:A:171:LYS:HE2	1:A:172:TYR:OH	2.18	0.44
1:A:216:GLY:HA3	1:A:239:GLY:HA2	1.98	0.44
1:A:42:THR:HG22	1:A:43:PRO:HD2	2.00	0.43
1:A:42:THR:OG1	1:A:45:GLU:HG3	2.18	0.43
1:A:174:GLU:O	1:A:176:THR:N	2.49	0.43
1:A:182:LEU:HA	1:A:182:LEU:HD23	1.80	0.43
1:A:278:HIS:CD2	1:A:280:VAL:HG12	2.53	0.43
1:A:18:LEU:C	1:A:20:GLY:H	2.22	0.42
1:A:213:VAL:HG23	1:A:233:THR:CG2	2.48	0.42
1:A:155:MET:HA	1:A:183:ALA:O	2.19	0.42
1:A:311:THR:O	1:A:315:MET:HB2	2.19	0.42
1:A:52:MET:HE2	1:A:64:LYS:HE3	2.01	0.42
1:A:109:ASN:ND2	1:A:122:GLY:HA3	2.34	0.42
1:A:319:GLU:O	1:A:323:LYS:HG3	2.19	0.42
1:A:112:VAL:HG13	1:A:112:VAL:O	2.18	0.42
1:A:172:TYR:HB2	1:A:177:VAL:HG11	2.02	0.42
1:A:296:ASP:HB2	1:A:300:PHE:CE2	2.55	0.42
1:A:39:PRO:CG	1:A:49:ILE:HD12	2.46	0.42
1:A:309:GLN:HE21	1:A:313:LYS:HD2	1.85	0.42
1:A:321:GLU:O	1:A:325:LEU:HB2	2.19	0.41
1:A:54:LYS:HB2	1:A:54:LYS:NZ	2.35	0.41
1:A:23:LYS:HE3	1:A:85:GLU:OE2	2.20	0.41
1:A:184:GLY:O	1:A:185:ASP:CB	2.69	0.41
1:A:100:VAL:O	1:A:150:SER:HA	2.21	0.40
1:A:101:ARG:O	1:A:102:TYR:HB3	2.21	0.40
1:A:15:HIS:HA	1:A:101:ARG:HH21	1.87	0.40
1:A:83:ALA:O	1:A:86:PHE:HB3	2.21	0.40

There are no symmetry-related clashes.

5.3 Torsion angles [i](#)

5.3.1 Protein backbone [i](#)

In the following table, the Percentiles column shows the percent Ramachandran outliers of the chain as a percentile score with respect to all X-ray entries followed by that with respect to entries of similar resolution.

The Analysed column shows the number of residues for which the backbone conformation was analysed, and the total number of residues.

Mol	Chain	Analysed	Favoured	Allowed	Outliers	Percentiles
1	A	347/356 (98%)	311 (90%)	26 (8%)	10 (3%)	4 15

All (10) Ramachandran outliers are listed below:

Mol	Chain	Res	Type
1	A	119	GLN
1	A	175	GLN
1	A	6	ALA
1	A	37	ALA
1	A	121	GLU
1	A	112	VAL
1	A	238	HIS
1	A	185	ASP
1	A	19	ASP
1	A	43	PRO

5.3.2 Protein sidechains [i](#)

In the following table, the Percentiles column shows the percent sidechain outliers of the chain as a percentile score with respect to all X-ray entries followed by that with respect to entries of similar resolution.

The Analysed column shows the number of residues for which the sidechain conformation was analysed, and the total number of residues.

Mol	Chain	Analysed	Rotameric	Outliers	Percentiles
1	A	304/309 (98%)	268 (88%)	36 (12%)	5 16

All (36) residues with a non-rotameric sidechain are listed below:

Mol	Chain	Res	Type
1	A	33	ARG
1	A	42	THR
1	A	44	GLU
1	A	49	ILE
1	A	53	ASP
1	A	54	LYS
1	A	60	ASP
1	A	101	ARG
1	A	109	ASN
1	A	124	LEU
1	A	130	VAL

Continued on next page...

Continued from previous page...

Mol	Chain	Res	Type
1	A	137	LEU
1	A	142	ARG
1	A	163	SER
1	A	166	VAL
1	A	168	LEU
1	A	177	VAL
1	A	182	LEU
1	A	187	THR
1	A	188	ILE
1	A	193	LEU
1	A	195	PRO
1	A	198	VAL
1	A	223	VAL
1	A	233	THR
1	A	242	THR
1	A	256	ASN
1	A	277	GLU
1	A	292	LEU
1	A	294	THR
1	A	298	LEU
1	A	304	LEU
1	A	313	LYS
1	A	335	LEU
1	A	341	LYS
1	A	344	LEU

Sometimes sidechains can be flipped to improve hydrogen bonding and reduce clashes. All (10) such sidechains are listed below:

Mol	Chain	Res	Type
1	A	47	GLN
1	A	48	ASN
1	A	134	ASN
1	A	138	GLN
1	A	158	GLN
1	A	175	GLN
1	A	197	HIS
1	A	256	ASN
1	A	278	HIS
1	A	309	GLN

5.3.3 RNA [i](#)

There are no RNA molecules in this entry.

5.4 Non-standard residues in protein, DNA, RNA chains [i](#)

There are no non-standard protein/DNA/RNA residues in this entry.

5.5 Carbohydrates [i](#)

There are no monosaccharides in this entry.

5.6 Ligand geometry [i](#)

Of 2 ligands modelled in this entry, 1 is monoatomic - leaving 1 for Mogul analysis.

In the following table, the Counts columns list the number of bonds (or angles) for which Mogul statistics could be retrieved, the number of bonds (or angles) that are observed in the model and the number of bonds (or angles) that are defined in the Chemical Component Dictionary. The Link column lists molecule types, if any, to which the group is linked. The Z score for a bond length (or angle) is the number of standard deviations the observed value is removed from the expected value. A bond length (or angle) with $|Z| > 2$ is considered an outlier worth inspection. RMSZ is the root-mean-square of all Z scores of the bond lengths (or angles).

Mol	Type	Chain	Res	Link	Bond lengths			Bond angles		
					Counts	RMSZ	# Z > 2	Counts	RMSZ	# Z > 2
3	FRL	A	401	-	24,33,33	2.46	8 (33%)	25,47,47	1.99	4 (16%)

In the following table, the Chirals column lists the number of chiral outliers, the number of chiral centers analysed, the number of these observed in the model and the number defined in the Chemical Component Dictionary. Similar counts are reported in the Torsion and Rings columns. '-' means no outliers of that kind were identified.

Mol	Type	Chain	Res	Link	Chirals	Torsions	Rings
3	FRL	A	401	-	1/1/3/3	5/9/21/21	0/4/4/4

All (8) bond length outliers are listed below:

Mol	Chain	Res	Type	Atoms	Z	Observed(Å)	Ideal(Å)
3	A	401	FRL	C26-C28	-9.25	1.38	1.50
3	A	401	FRL	C15-C16	3.66	1.44	1.37
3	A	401	FRL	C4-C5	2.98	1.42	1.36

Continued on next page...

Continued from previous page...

Mol	Chain	Res	Type	Atoms	Z	Observed(Å)	Ideal(Å)
3	A	401	FRL	C14-C13	2.50	1.42	1.36
3	A	401	FRL	C6-CL7	-2.38	1.69	1.74
3	A	401	FRL	C5-C6	2.30	1.42	1.38
3	A	401	FRL	C2-C1	2.26	1.41	1.36
3	A	401	FRL	C14-C15	2.00	1.43	1.38

All (4) bond angle outliers are listed below:

Mol	Chain	Res	Type	Atoms	Z	Observed(°)	Ideal(°)
3	A	401	FRL	C18-C19-N22	7.33	124.89	112.36
3	A	401	FRL	C26-C28-N30	3.26	119.47	116.25
3	A	401	FRL	O21-C20-C23	2.33	116.65	109.74
3	A	401	FRL	C5-C6-CL7	2.00	122.49	119.35

All (1) chirality outliers are listed below:

Mol	Chain	Res	Type	Atom
3	A	401	FRL	C19

All (5) torsion outliers are listed below:

Mol	Chain	Res	Type	Atoms
3	A	401	FRL	C16-C17-C18-C19
3	A	401	FRL	C18-C19-C20-O21
3	A	401	FRL	C18-C19-C20-C23
3	A	401	FRL	C17-C18-C19-N22
3	A	401	FRL	N22-C19-C20-C23

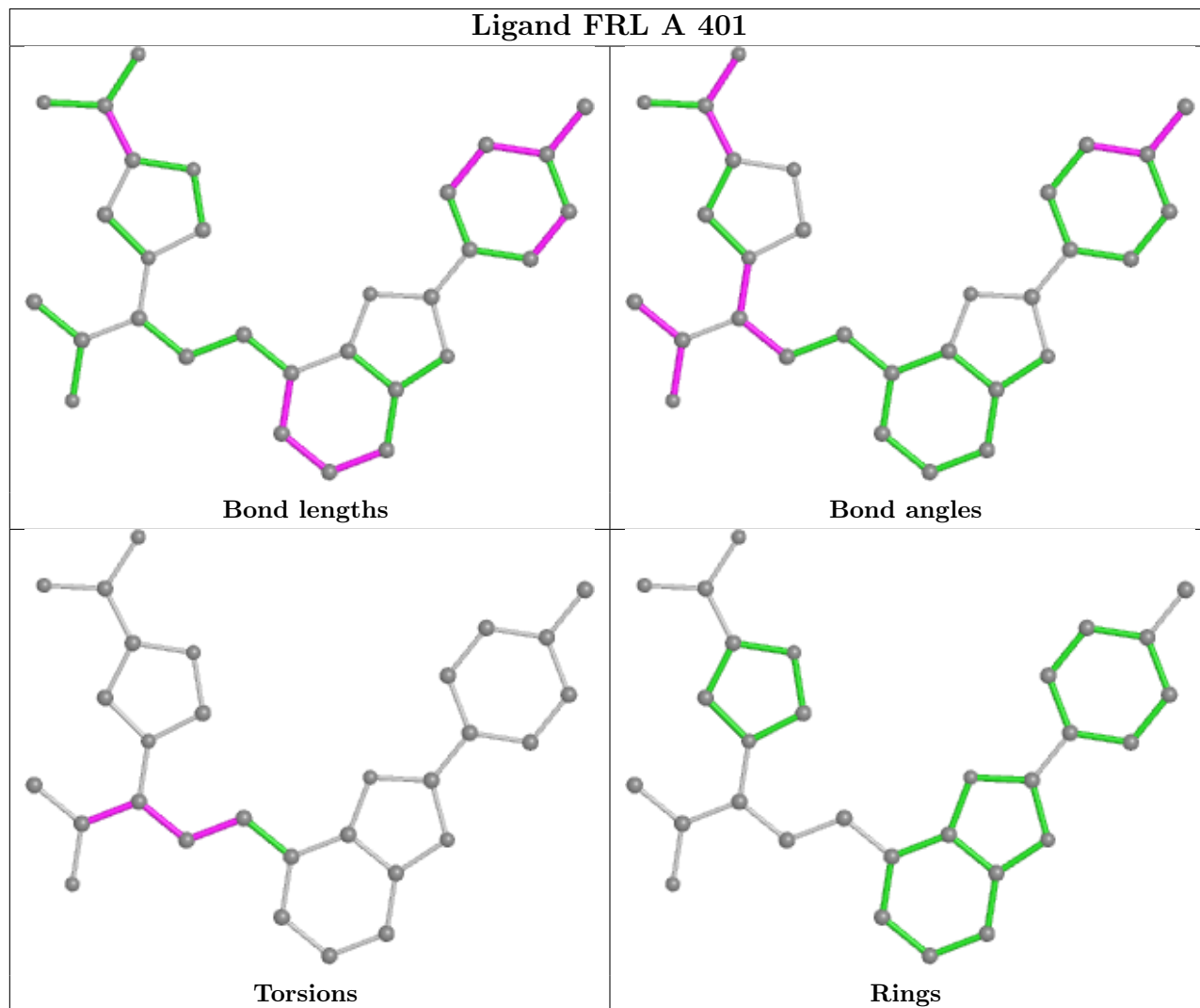
There are no ring outliers.

1 monomer is involved in 1 short contact:

Mol	Chain	Res	Type	Clashes	Symm-Clashes
3	A	401	FRL	1	0

The following is a two-dimensional graphical depiction of Mogul quality analysis of bond lengths, bond angles, torsion angles, and ring geometry for all instances of the Ligand of Interest. In addition, ligands with molecular weight > 250 and outliers as shown on the validation Tables will also be included. For torsion angles, if less than 5% of the Mogul distribution of torsion angles is within 10 degrees of the torsion angle in question, then that torsion angle is considered an outlier. Any bond that is central to one or more torsion angles identified as an outlier by Mogul will be highlighted in the graph. For rings, the root-mean-square deviation (RMSD) between the ring

in question and similar rings identified by Mogul is calculated over all ring torsion angles. If the average RMSD is greater than 60 degrees and the minimal RMSD between the ring in question and any Mogul-identified rings is also greater than 60 degrees, then that ring is considered an outlier. The outliers are highlighted in purple. The color gray indicates Mogul did not find sufficient equivalents in the CSD to analyse the geometry.



5.7 Other polymers [i](#)

There are no such residues in this entry.

5.8 Polymer linkage issues [i](#)

There are no chain breaks in this entry.

6 Fit of model and data [i](#)

6.1 Protein, DNA and RNA chains [i](#)

In the following table, the column labelled ‘#RSRZ > 2’ contains the number (and percentage) of RSRZ outliers, followed by percent RSRZ outliers for the chain as percentile scores relative to all X-ray entries and entries of similar resolution. The OWAB column contains the minimum, median, 95th percentile and maximum values of the occupancy-weighted average B-factor per residue. The column labelled ‘Q < 0.9’ lists the number of (and percentage) of residues with an average occupancy less than 0.9.

Mol	Chain	Analysed	<RSRZ>	#RSRZ>2	OWAB(Å ²)	Q<0.9
1	A	349/356 (98%)	-0.38	2 (0%) 89 86	8, 34, 62, 73	0

All (2) RSRZ outliers are listed below:

Mol	Chain	Res	Type	RSRZ
1	A	47	GLN	2.6
1	A	352	ARG	2.4

6.2 Non-standard residues in protein, DNA, RNA chains [i](#)

There are no non-standard protein/DNA/RNA residues in this entry.

6.3 Carbohydrates [i](#)

There are no monosaccharides in this entry.

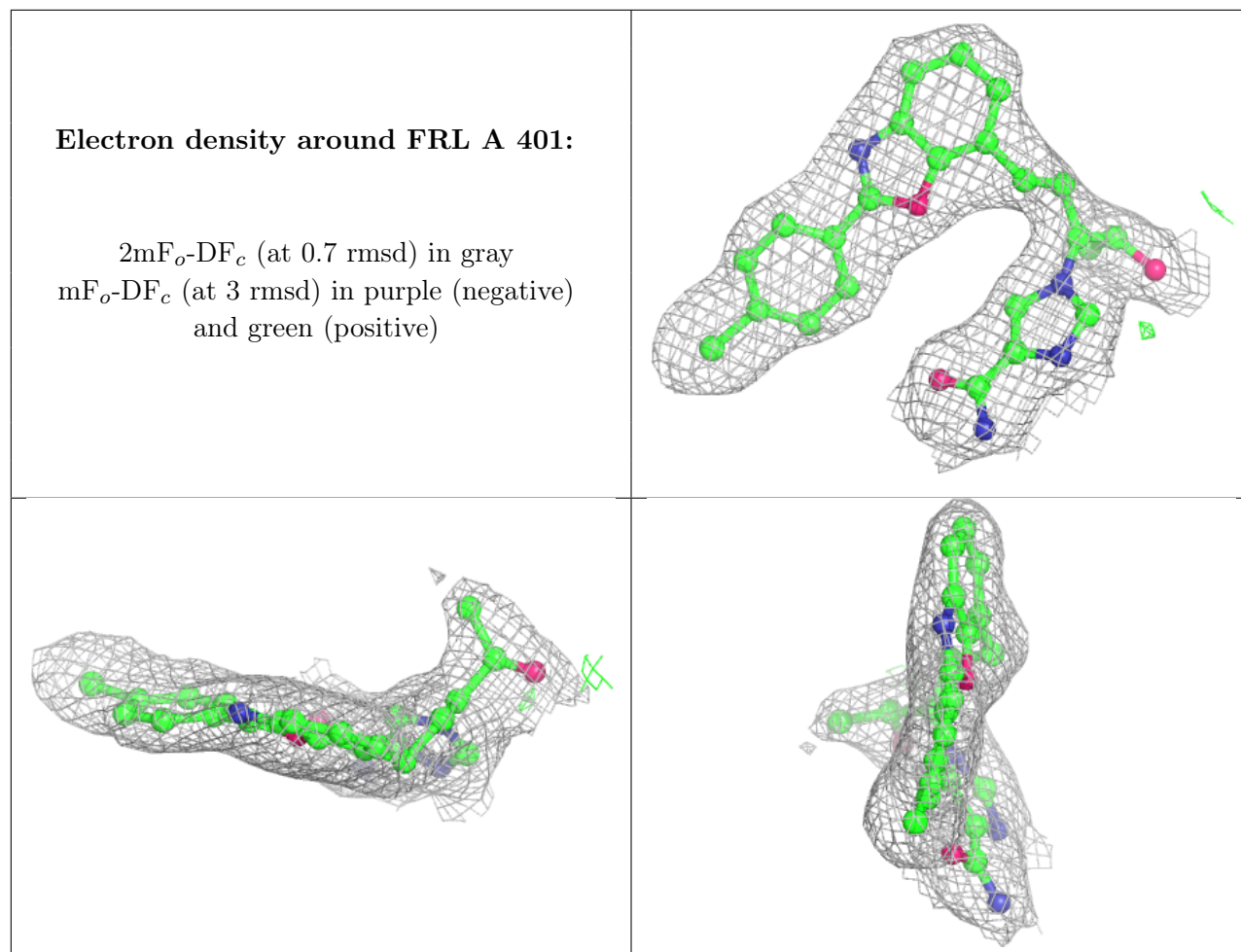
6.4 Ligands [i](#)

In the following table, the Atoms column lists the number of modelled atoms in the group and the number defined in the chemical component dictionary. The B-factors column lists the minimum, median, 95th percentile and maximum values of B factors of atoms in the group. The column labelled ‘Q < 0.9’ lists the number of atoms with occupancy less than 0.9.

Mol	Type	Chain	Res	Atoms	RSCC	RSR	B-factors(Å ²)	Q<0.9
2	ZN	A	400	1/1	0.95	0.17	23,23,23,23	0
3	FRL	A	401	30/30	0.96	0.17	16,21,30,38	0

The following is a graphical depiction of the model fit to experimental electron density of all instances of the Ligand of Interest. In addition, ligands with molecular weight > 250 and outliers as shown on the geometry validation Tables will also be included. Each fit is shown from different

orientation to approximate a three-dimensional view.



6.5 Other polymers [i](#)

There are no such residues in this entry.