



Full wwPDB X-ray Structure Validation Report ⓘ

Oct 12, 2021 – 09:12 AM EDT

PDB ID : 2AA5
Title : Mineralocorticoid Receptor with Bound Progesterone
Authors : Bledsoe, R.K.; Madauss, K.P.; Holt, J.A.; Apolito, C.J.; Lambert, M.H.;
Pearce, K.H.; Stanley, T.B.; Stewart, E.L.; Trump, R.P.; Willson, T.M.;
Williams, S.P.
Deposited on : 2005-07-13
Resolution : 2.20 Å(reported)

This is a Full wwPDB X-ray Structure Validation Report for a publicly released PDB entry.

We welcome your comments at validation@mail.wwpdb.org

A user guide is available at

<https://www.wwpdb.org/validation/2017/XrayValidationReportHelp>

with specific help available everywhere you see the ⓘ symbol.

The following versions of software and data (see [references ⓘ](#)) were used in the production of this report:

MolProbity : 4.02b-467
Mogul : 1.8.5 (274361), CSD as541be (2020)
Xtrriage (Phenix) : 1.13
EDS : 2.23.2
buster-report : 1.1.7 (2018)
Percentile statistics : 20191225.v01 (using entries in the PDB archive December 25th 2019)
Refmac : 5.8.0158
CCP4 : 7.0.044 (Gargrove)
Ideal geometry (proteins) : Engh & Huber (2001)
Ideal geometry (DNA, RNA) : Parkinson et al. (1996)
Validation Pipeline (wwPDB-VP) : 2.23.2

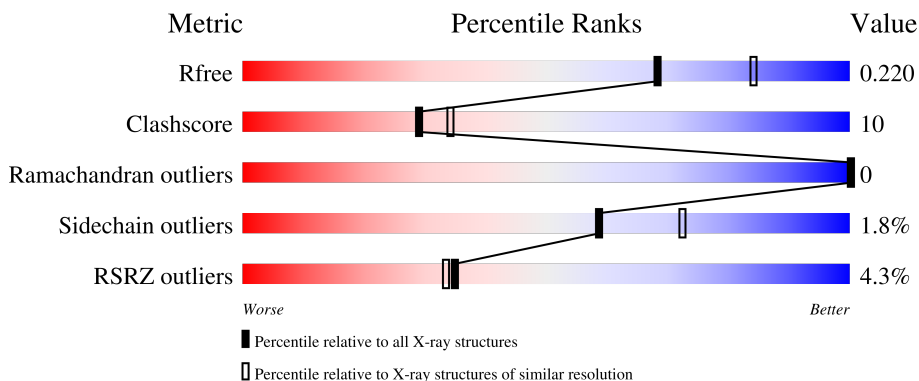
1 Overall quality at a glance

The following experimental techniques were used to determine the structure:

X-RAY DIFFRACTION

The reported resolution of this entry is 2.20 Å.

Percentile scores (ranging between 0-100) for global validation metrics of the entry are shown in the following graphic. The table shows the number of entries on which the scores are based.



Metric	Whole archive (#Entries)	Similar resolution (#Entries, resolution range(Å))
R_{free}	130704	4898 (2.20-2.20)
Clashscore	141614	5594 (2.20-2.20)
Ramachandran outliers	138981	5503 (2.20-2.20)
Sidechain outliers	138945	5504 (2.20-2.20)
RSRZ outliers	127900	4800 (2.20-2.20)

The table below summarises the geometric issues observed across the polymeric chains and their fit to the electron density. The red, orange, yellow and green segments of the lower bar indicate the fraction of residues that contain outliers for ≥ 3 , 2, 1 and 0 types of geometric quality criteria respectively. A grey segment represents the fraction of residues that are not modelled. The numeric value for each fraction is indicated below the corresponding segment, with a dot representing fractions $\leq 5\%$. The upper red bar (where present) indicates the fraction of residues that have poor fit to the electron density. The numeric value is given above the bar.

Mol	Chain	Length	Quality of chain
1	A	275	 4% 73% 18% 7%
1	B	275	 4% 75% 17% 7%

2 Entry composition i

There are 3 unique types of molecules in this entry. The entry contains 4309 atoms, of which 0 are hydrogens and 0 are deuteriums.

In the tables below, the ZeroOcc column contains the number of atoms modelled with zero occupancy, the AltConf column contains the number of residues with at least one atom in alternate conformation and the Trace column contains the number of residues modelled with at most 2 atoms.

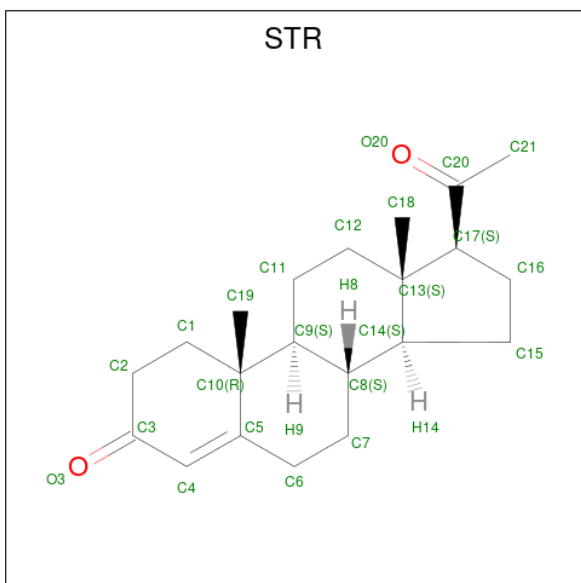
- Molecule 1 is a protein called Mineralocorticoid receptor.

Mol	Chain	Residues	Atoms					ZeroOcc	AltConf	Trace
			Total	C	N	O	S			
1	A	255	2005	1304	316	372	13	0	2	0
1	B	255	2004	1301	314	377	12	0	2	0

There are 6 discrepancies between the modelled and reference sequences:

Chain	Residue	Modelled	Actual	Comment	Reference
A	710	GLY	-	cloning artifact	UNP P08235
A	711	SER	-	cloning artifact	UNP P08235
A	808	SER	CYS	engineered mutation	UNP P08235
B	710	GLY	-	cloning artifact	UNP P08235
B	711	SER	-	cloning artifact	UNP P08235
B	808	SER	CYS	engineered mutation	UNP P08235

- Molecule 2 is PROGESTERONE (three-letter code: STR) (formula: $C_{21}H_{30}O_2$).



Mol	Chain	Residues	Atoms			ZeroOcc	AltConf
2	A	1	Total	C	O	0	0
			23	21	2		
2	B	1	Total	C	O	0	0
			23	21	2		

- Molecule 3 is water.

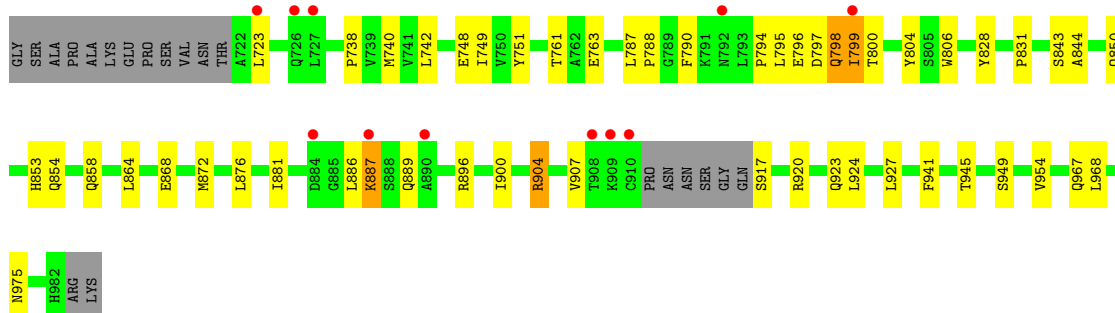
Mol	Chain	Residues	Atoms		ZeroOcc	AltConf
3	A	118	Total	O	0	0
			118	118		
3	B	136	Total	O	0	0
			136	136		

3 Residue-property plots [i](#)


These plots are drawn for all protein, RNA, DNA and oligosaccharide chains in the entry. The first graphic for a chain summarises the proportions of the various outlier classes displayed in the second graphic. The second graphic shows the sequence view annotated by issues in geometry and electron density. Residues are color-coded according to the number of geometric quality criteria for which they contain at least one outlier: green = 0, yellow = 1, orange = 2 and red = 3 or more. A red dot above a residue indicates a poor fit to the electron density ($RSRZ > 2$). Stretches of 2 or more consecutive residues without any outlier are shown as a green connector. Residues present in the sample, but not in the model, are shown in grey.

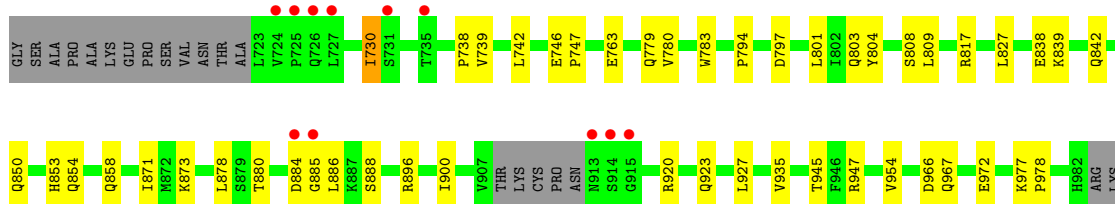
- Molecule 1: Mineralocorticoid receptor

Chain A: 



- Molecule 1: Mineralocorticoid receptor

Chain B: 



4 Data and refinement statistics

Property	Value	Source
Space group	P 21 21 21	Depositor
Cell constants a, b, c, α , β , γ	42.16Å 89.39Å 172.20Å 90.00° 90.00° 90.00°	Depositor
Resolution (Å)	20.00 – 2.20 19.96 – 2.20	Depositor EDS
% Data completeness (in resolution range)	97.1 (20.00-2.20) 97.6 (19.96-2.20)	Depositor EDS
R_{merge}	0.09	Depositor
R_{sym}	(Not available)	Depositor
$\langle I/\sigma(I) \rangle$ ¹	3.44 (at 2.21Å)	Xtrriage
Refinement program	CNS	Depositor
R, R_{free}	0.220 , 0.264 0.218 , 0.220	Depositor DCC
R_{free} test set	2344 reflections (7.11%)	wwPDB-VP
Wilson B-factor (Å ²)	27.8	Xtrriage
Anisotropy	0.724	Xtrriage
Bulk solvent k_{sol} (e/Å ³), B_{sol} (Å ²)	0.35 , 47.3	EDS
L-test for twinning ²	$\langle L \rangle = 0.47$, $\langle L^2 \rangle = 0.30$	Xtrriage
Estimated twinning fraction	No twinning to report.	Xtrriage
F_o, F_c correlation	0.93	EDS
Total number of atoms	4309	wwPDB-VP
Average B, all atoms (Å ²)	34.0	wwPDB-VP

Xtrriage's analysis on translational NCS is as follows: *The largest off-origin peak in the Patterson function is 13.53% of the height of the origin peak. No significant pseudotranslation is detected.*

¹Intensities estimated from amplitudes.

²Theoretical values of $\langle |L| \rangle$, $\langle L^2 \rangle$ for acentric reflections are 0.5, 0.333 respectively for untwinned datasets, and 0.375, 0.2 for perfectly twinned datasets.

5 Model quality [i](#)

5.1 Standard geometry [i](#)

Bond lengths and bond angles in the following residue types are not validated in this section: STR

The Z score for a bond length (or angle) is the number of standard deviations the observed value is removed from the expected value. A bond length (or angle) with $|Z| > 5$ is considered an outlier worth inspection. RMSZ is the root-mean-square of all Z scores of the bond lengths (or angles).

Mol	Chain	Bond lengths		Bond angles	
		RMSZ	# Z >5	RMSZ	# Z >5
1	A	0.58	0/2064	0.61	0/2811
1	B	0.59	0/2062	0.64	0/2806
All	All	0.58	0/4126	0.63	0/5617

There are no bond length outliers.

There are no bond angle outliers.

There are no chirality outliers.

There are no planarity outliers.

5.2 Too-close contacts [i](#)

In the following table, the Non-H and H(model) columns list the number of non-hydrogen atoms and hydrogen atoms in the chain respectively. The H(added) column lists the number of hydrogen atoms added and optimized by MolProbity. The Clashes column lists the number of clashes within the asymmetric unit, whereas Symm-Clashes lists symmetry-related clashes.

Mol	Chain	Non-H	H(model)	H(added)	Clashes	Symm-Clashes
1	A	2005	0	1939	44	0
1	B	2004	0	1935	33	0
2	A	23	0	30	0	0
2	B	23	0	30	0	0
3	A	118	0	0	5	0
3	B	136	0	0	9	0
All	All	4309	0	3934	77	0

The all-atom clashscore is defined as the number of clashes found per 1000 atoms (including hydrogen atoms). The all-atom clashscore for this structure is 10.

All (77) close contacts within the same asymmetric unit are listed below, sorted by their clash

magnitude.

Atom-1	Atom-2	Interatomic distance (Å)	Clash overlap (Å)
1:A:868:GLU:HB3	1:A:872:MET:HE3	1.53	0.91
1:A:806:TRP:HE1	1:A:967:GLN:HE22	1.19	0.86
1:A:858:GLN:NE2	1:A:927:LEU:HD13	1.94	0.83
1:A:806:TRP:HE1	1:A:967:GLN:NE2	1.81	0.78
1:B:858:GLN:NE2	1:B:927:LEU:HD13	2.01	0.76
1:B:920:ARG:HA	1:B:923:GLN:HE21	1.51	0.76
1:A:868:GLU:HB3	1:A:872:MET:CE	2.23	0.67
1:B:920:ARG:HA	1:B:923:GLN:NE2	2.10	0.67
1:A:858:GLN:HE22	1:A:927:LEU:HD13	1.60	0.65
1:B:947:ARG:NH2	1:B:972:GLU:OE1	2.31	0.62
1:B:853:HIS:HD2	3:B:111:HOH:O	1.81	0.62
1:B:896:ARG:O	1:B:900:ILE:HG13	1.99	0.62
1:A:949:SER:HB2	1:A:954:VAL:O	2.01	0.61
1:B:945[A]:THR:HG21	1:B:954:VAL:HG11	1.82	0.61
1:A:907:VAL:O	1:A:907:VAL:HG12	2.00	0.60
1:B:808:SER:OG	1:B:935:VAL:HG21	2.00	0.60
1:B:739:VAL:HG22	1:B:871:ILE:HD11	1.84	0.60
1:B:945[A]:THR:CG2	1:B:954:VAL:HG11	2.33	0.58
1:B:838:GLU:O	1:B:842:GLN:HG3	2.02	0.58
1:A:904:ARG:NH2	1:A:917:SER:OG	2.37	0.58
1:A:790:PHE:CE2	1:A:798:GLN:HG2	2.40	0.57
1:A:907:VAL:HG13	1:A:920:ARG:HD3	1.87	0.57
1:B:739:VAL:HG23	3:B:69:HOH:O	2.03	0.57
1:B:839:LYS:HE2	3:B:234:HOH:O	2.04	0.56
1:A:795:LEU:O	1:A:799:ILE:HG22	2.05	0.56
1:B:966:ASP:HB2	3:B:89:HOH:O	2.06	0.56
1:A:872:MET:CE	1:A:924:LEU:HD13	2.35	0.56
1:A:738:PRO:HD2	3:A:123:HOH:O	2.06	0.55
1:B:794:PRO:HG2	1:B:888:SER:HB2	1.88	0.55
1:B:809:LEU:HD22	1:B:873:LYS:HG3	1.89	0.53
1:A:887:LYS:HB2	3:A:240:HOH:O	2.07	0.53
1:B:804:TYR:HD2	1:B:880:THR:HG22	1.72	0.53
1:A:872:MET:HE1	1:A:924:LEU:HD13	1.90	0.53
1:A:872:MET:HE1	1:A:924:LEU:HD22	1.89	0.52
1:A:787:LEU:HD12	1:A:788:PRO:HD2	1.94	0.50
1:B:738:PRO:O	1:B:742:LEU:HG	2.12	0.50
1:B:884:ASP:OD2	1:B:885:GLY:O	2.30	0.49
1:B:850:GLN:O	1:B:854:GLN:HG2	2.13	0.48
1:A:968:LEU:C	1:A:968:LEU:HD23	2.34	0.48
1:A:761:THR:OG1	1:A:763:GLU:HG2	2.13	0.47
1:A:797:ASP:CG	1:A:886:LEU:HB3	2.35	0.47

Continued on next page...

Continued from previous page...

Atom-1	Atom-2	Interatomic distance (Å)	Clash overlap (Å)
1:B:779:GLN:HG3	3:B:146:HOH:O	2.14	0.47
1:A:800:THR:HG22	1:A:804:TYR:CD1	2.50	0.46
1:A:864:LEU:HD11	1:A:872:MET:CE	2.45	0.46
1:A:975:ASN:ND2	3:A:217:HOH:O	2.45	0.46
1:A:853:HIS:HD2	3:A:43:HOH:O	1.99	0.46
1:B:827:LEU:HD23	3:B:111:HOH:O	2.16	0.46
1:A:794:PRO:HG2	1:A:797:ASP:OD2	2.16	0.45
1:A:787:LEU:HA	1:A:788:PRO:HD3	1.87	0.44
1:A:907:VAL:CG1	1:A:920:ARG:HB3	2.48	0.44
1:B:801:LEU:HD13	1:B:878:LEU:HD23	1.99	0.44
1:B:730:ILE:HB	3:B:201:HOH:O	2.17	0.44
1:B:746:GLU:HA	1:B:747:PRO:HD3	1.86	0.44
1:A:881:ILE:HD12	1:A:889:GLN:HE22	1.83	0.44
1:A:920:ARG:HA	1:A:923:GLN:NE2	2.32	0.44
1:A:738:PRO:O	1:A:742:LEU:HG	2.18	0.44
1:A:941:PHE:O	1:A:945[B]:THR:HG23	2.18	0.43
1:A:749:ILE:HD11	1:A:828:TYR:HE1	1.84	0.43
1:A:907:VAL:O	1:A:907:VAL:CG1	2.65	0.43
1:B:794:PRO:CG	1:B:888:SER:HB2	2.48	0.43
1:A:751:TYR:CE1	1:A:831:PRO:HB2	2.54	0.42
1:A:799:ILE:HG23	3:A:193:HOH:O	2.19	0.42
1:B:977:LYS:HA	1:B:978:PRO:HD3	1.86	0.42
1:A:797:ASP:OD1	1:A:886:LEU:HB3	2.19	0.42
1:A:872:MET:HE2	1:A:924:LEU:HD13	2.02	0.41
1:B:780:VAL:O	1:B:783:TRP:HB3	2.20	0.41
1:B:858:GLN:HE22	1:B:927:LEU:HD13	1.79	0.41
1:A:843:SER:O	1:A:844:ALA:HB3	2.21	0.41
1:B:817:ARG:HD3	3:B:41:HOH:O	2.20	0.41
1:A:796:GLU:O	1:A:799:ILE:HG23	2.21	0.41
1:A:850:GLN:O	1:A:854:GLN:HG2	2.21	0.41
1:A:896:ARG:O	1:A:900:ILE:HG13	2.21	0.41
1:B:803:GLN:HB3	1:B:967:GLN:HE21	1.86	0.41
1:B:763:GLU:HG2	3:B:178:HOH:O	2.21	0.40
1:A:749:ILE:HD13	1:A:831:PRO:HG3	2.02	0.40
1:A:876:LEU:HD23	1:A:876:LEU:HA	1.89	0.40
1:B:797:ASP:CG	1:B:886:LEU:HB3	2.42	0.40

There are no symmetry-related clashes.

5.3 Torsion angles [i](#)

5.3.1 Protein backbone [i](#)

In the following table, the Percentiles column shows the percent Ramachandran outliers of the chain as a percentile score with respect to all X-ray entries followed by that with respect to entries of similar resolution.

The Analysed column shows the number of residues for which the backbone conformation was analysed, and the total number of residues.

Mol	Chain	Analysed	Favoured	Allowed	Outliers	Percentiles	
1	A	253/275 (92%)	251 (99%)	2 (1%)	0	100	100
1	B	253/275 (92%)	248 (98%)	5 (2%)	0	100	100
All	All	506/550 (92%)	499 (99%)	7 (1%)	0	100	100

There are no Ramachandran outliers to report.

5.3.2 Protein sidechains [i](#)

In the following table, the Percentiles column shows the percent sidechain outliers of the chain as a percentile score with respect to all X-ray entries followed by that with respect to entries of similar resolution.

The Analysed column shows the number of residues for which the sidechain conformation was analysed, and the total number of residues.

Mol	Chain	Analysed	Rotameric	Outliers	Percentiles	
1	A	218/251 (87%)	211 (97%)	7 (3%)	39	50
1	B	219/251 (87%)	218 (100%)	1 (0%)	88	94
All	All	437/502 (87%)	429 (98%)	8 (2%)	59	72

All (8) residues with a non-rotameric sidechain are listed below:

Mol	Chain	Res	Type
1	A	723	LEU
1	A	740	MET
1	A	748	GLU
1	A	798	GLN
1	A	799	ILE
1	A	887	LYS
1	A	904	ARG
1	B	730	ILE

Sometimes sidechains can be flipped to improve hydrogen bonding and reduce clashes. All (16) such sidechains are listed below:

Mol	Chain	Res	Type
1	A	776	GLN
1	A	803	GLN
1	A	858	GLN
1	A	898	ASN
1	A	919	GLN
1	A	923	GLN
1	A	967	GLN
1	A	975	ASN
1	B	764	ASN
1	B	776	GLN
1	B	803	GLN
1	B	823	ASN
1	B	825	GLN
1	B	858	GLN
1	B	898	ASN
1	B	923	GLN

5.3.3 RNA [i](#)

There are no RNA molecules in this entry.

5.4 Non-standard residues in protein, DNA, RNA chains [i](#)

There are no non-standard protein/DNA/RNA residues in this entry.

5.5 Carbohydrates [i](#)

There are no monosaccharides in this entry.

5.6 Ligand geometry [i](#)

2 ligands are modelled in this entry.

In the following table, the Counts columns list the number of bonds (or angles) for which Mogul statistics could be retrieved, the number of bonds (or angles) that are observed in the model and the number of bonds (or angles) that are defined in the Chemical Component Dictionary. The Link column lists molecule types, if any, to which the group is linked. The Z score for a bond length (or angle) is the number of standard deviations the observed value is removed from the

expected value. A bond length (or angle) with $|Z| > 2$ is considered an outlier worth inspection. RMSZ is the root-mean-square of all Z scores of the bond lengths (or angles).

Mol	Type	Chain	Res	Link	Bond lengths			Bond angles		
					Counts	RMSZ	# Z > 2	Counts	RMSZ	# Z > 2
2	STR	A	301	-	26,26,26	2.06	10 (38%)	42,42,42	1.26	4 (9%)
2	STR	B	302	-	26,26,26	2.33	14 (53%)	42,42,42	1.39	5 (11%)

In the following table, the Chirals column lists the number of chiral outliers, the number of chiral centers analysed, the number of these observed in the model and the number defined in the Chemical Component Dictionary. Similar counts are reported in the Torsion and Rings columns. '-' means no outliers of that kind were identified.

Mol	Type	Chain	Res	Link	Chirals	Torsions	Rings
2	STR	A	301	-	-	0/4/62/62	0/4/4/4
2	STR	B	302	-	-	0/4/62/62	0/4/4/4

All (24) bond length outliers are listed below:

Mol	Chain	Res	Type	Atoms	Z	Observed(Å)	Ideal(Å)
2	B	302	STR	C19-C10	3.82	1.61	1.54
2	B	302	STR	C18-C13	3.81	1.61	1.54
2	A	301	STR	C6-C5	3.73	1.56	1.50
2	A	301	STR	C17-C20	3.59	1.57	1.51
2	B	302	STR	C12-C13	3.56	1.60	1.54
2	B	302	STR	C6-C5	3.35	1.56	1.50
2	B	302	STR	C8-C9	3.31	1.59	1.53
2	B	302	STR	C10-C9	3.28	1.61	1.56
2	A	301	STR	C10-C5	3.27	1.59	1.52
2	B	302	STR	C13-C14	3.25	1.61	1.55
2	B	302	STR	C10-C5	3.04	1.58	1.52
2	A	301	STR	C8-C9	3.03	1.59	1.53
2	A	301	STR	C19-C10	2.92	1.59	1.54
2	B	302	STR	C17-C20	2.78	1.55	1.51
2	A	301	STR	C12-C13	2.63	1.58	1.54
2	A	301	STR	C11-C9	2.57	1.58	1.53
2	A	301	STR	C18-C13	2.44	1.58	1.54
2	B	302	STR	C15-C14	2.41	1.59	1.54
2	B	302	STR	C12-C11	2.24	1.58	1.53
2	B	302	STR	C7-C8	2.23	1.57	1.53
2	B	302	STR	C11-C9	2.17	1.57	1.53
2	B	302	STR	C1-C10	2.15	1.58	1.54
2	A	301	STR	C13-C14	2.10	1.59	1.55
2	A	301	STR	C7-C8	2.08	1.57	1.53

All (9) bond angle outliers are listed below:

Mol	Chain	Res	Type	Atoms	Z	Observed(°)	Ideal(°)
2	B	302	STR	C2-C3-C4	3.85	122.68	116.74
2	A	301	STR	C2-C3-C4	3.15	121.58	116.74
2	B	302	STR	C11-C9-C10	-2.88	109.28	113.08
2	B	302	STR	C17-C13-C14	-2.75	96.79	99.72
2	A	301	STR	C11-C9-C10	-2.72	109.50	113.08
2	A	301	STR	C21-C20-C17	2.63	121.38	117.56
2	B	302	STR	O3-C3-C2	-2.19	117.04	121.57
2	A	301	STR	C6-C7-C8	2.14	115.57	111.69
2	B	302	STR	C7-C8-C9	-2.00	108.01	110.49

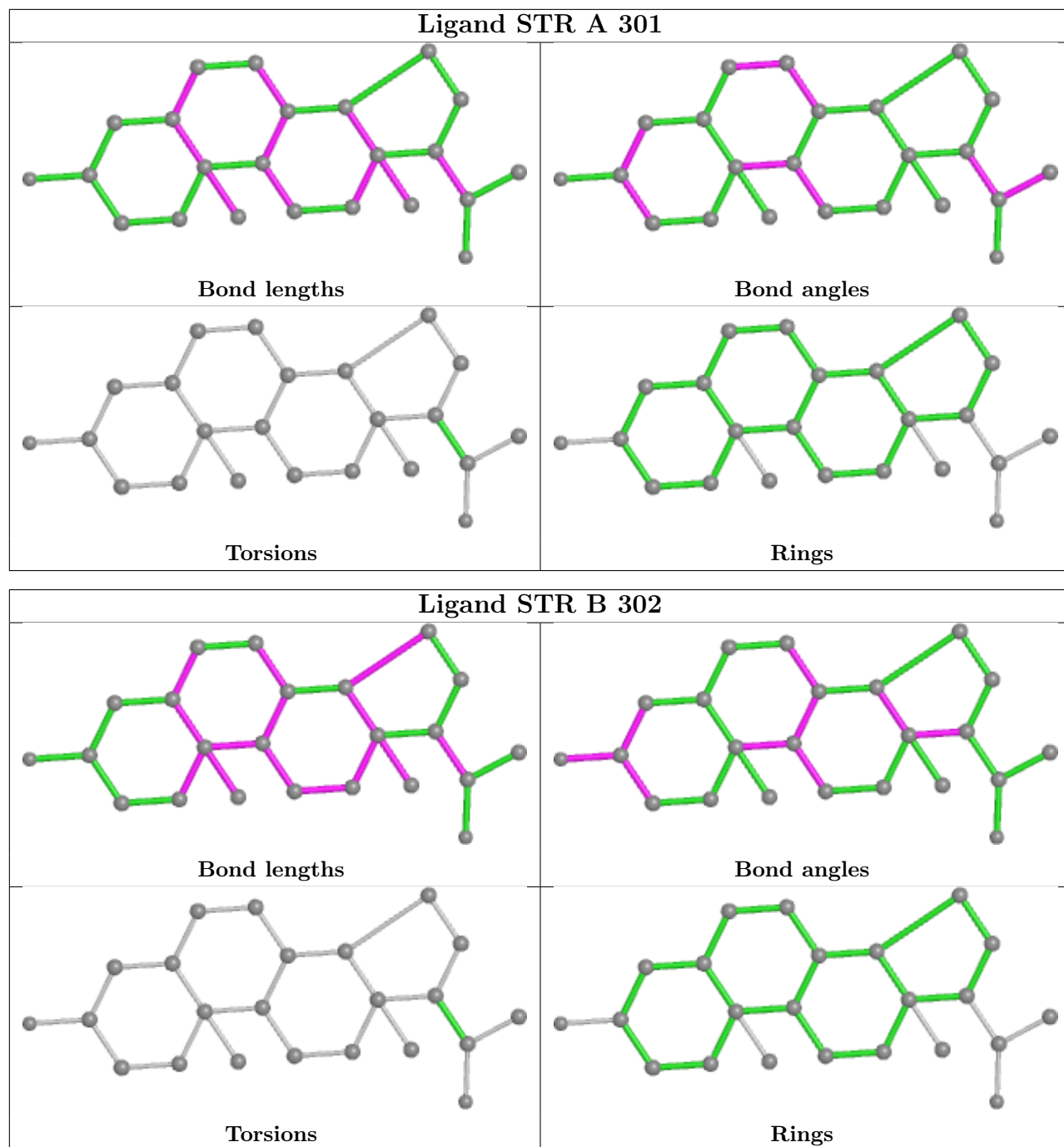
There are no chirality outliers.

There are no torsion outliers.

There are no ring outliers.

No monomer is involved in short contacts.

The following is a two-dimensional graphical depiction of Mogul quality analysis of bond lengths, bond angles, torsion angles, and ring geometry for all instances of the Ligand of Interest. In addition, ligands with molecular weight > 250 and outliers as shown on the validation Tables will also be included. For torsion angles, if less than 5% of the Mogul distribution of torsion angles is within 10 degrees of the torsion angle in question, then that torsion angle is considered an outlier. Any bond that is central to one or more torsion angles identified as an outlier by Mogul will be highlighted in the graph. For rings, the root-mean-square deviation (RMSD) between the ring in question and similar rings identified by Mogul is calculated over all ring torsion angles. If the average RMSD is greater than 60 degrees and the minimal RMSD between the ring in question and any Mogul-identified rings is also greater than 60 degrees, then that ring is considered an outlier. The outliers are highlighted in purple. The color gray indicates Mogul did not find sufficient equivalents in the CSD to analyse the geometry.



5.7 Other polymers [i](#)

There are no such residues in this entry.

5.8 Polymer linkage issues [i](#)

There are no chain breaks in this entry.

6 Fit of model and data

6.1 Protein, DNA and RNA chains

In the following table, the column labelled ‘#RSRZ > 2’ contains the number (and percentage) of RSRZ outliers, followed by percent RSRZ outliers for the chain as percentile scores relative to all X-ray entries and entries of similar resolution. The OWAB column contains the minimum, median, 95th percentile and maximum values of the occupancy-weighted average B-factor per residue. The column labelled ‘Q < 0.9’ lists the number of (and percentage) of residues with an average occupancy less than 0.9.

Mol	Chain	Analysed	<RSRZ>	#RSRZ>2	OWAB(Å ²)	Q<0.9
1	A	255/275 (92%)	0.11	11 (4%) 35 33	17, 31, 61, 79	0
1	B	255/275 (92%)	0.08	11 (4%) 35 33	17, 30, 65, 77	0
All	All	510/550 (92%)	0.10	22 (4%) 35 33	17, 31, 62, 79	0

All (22) RSRZ outliers are listed below:

Mol	Chain	Res	Type	RSRZ
1	A	910	CYS	5.6
1	B	726	GLN	5.2
1	A	908	THR	5.0
1	B	725	PRO	4.9
1	B	913	ASN	4.7
1	B	915	GLY	4.6
1	B	735	THR	4.4
1	B	884	ASP	4.2
1	A	884	ASP	3.6
1	A	887	LYS	3.6
1	A	723	LEU	3.4
1	A	909	LYS	3.4
1	B	727	LEU	3.3
1	A	890	ALA	2.9
1	A	727	LEU	2.9
1	B	731	SER	2.6
1	A	792	ASN	2.6
1	A	726	GLN	2.6
1	B	914	SER	2.5
1	B	724	VAL	2.5
1	A	799	ILE	2.5
1	B	885	GLY	2.3

6.2 Non-standard residues in protein, DNA, RNA chains [i](#)

There are no non-standard protein/DNA/RNA residues in this entry.

6.3 Carbohydrates [i](#)

There are no monosaccharides in this entry.

6.4 Ligands [i](#)

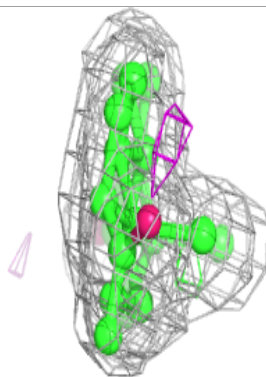
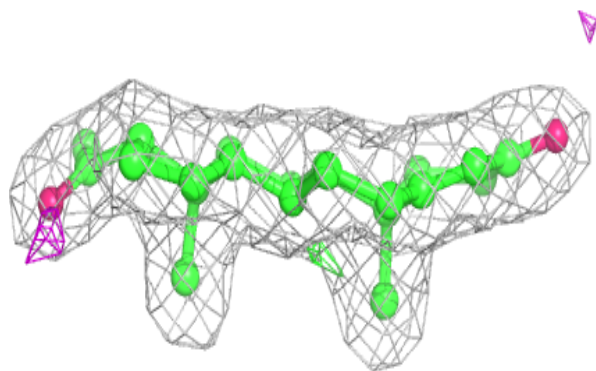
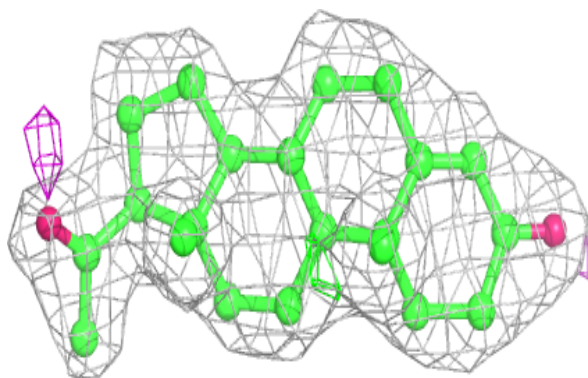
In the following table, the Atoms column lists the number of modelled atoms in the group and the number defined in the chemical component dictionary. The B-factors column lists the minimum, median, 95th percentile and maximum values of B factors of atoms in the group. The column labelled 'Q< 0.9' lists the number of atoms with occupancy less than 0.9.

Mol	Type	Chain	Res	Atoms	RSCC	RSR	B-factors(Å ²)	Q<0.9
2	STR	B	302	23/23	0.93	0.15	14,18,20,22	0
2	STR	A	301	23/23	0.95	0.20	16,20,23,23	0

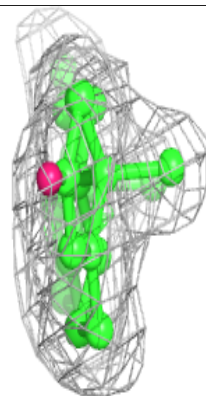
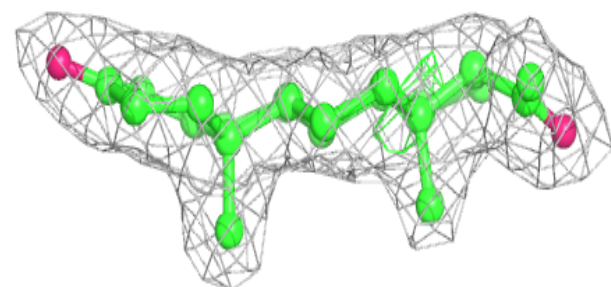
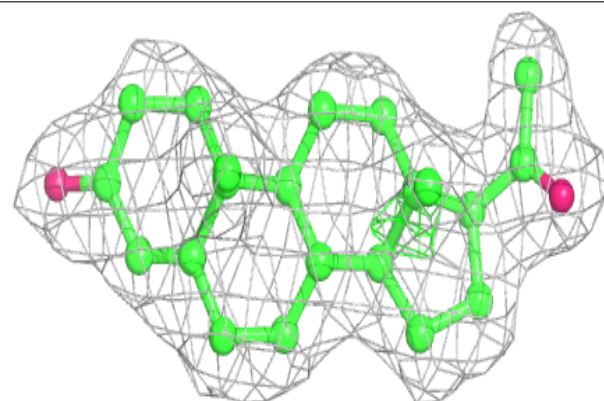
The following is a graphical depiction of the model fit to experimental electron density of all instances of the Ligand of Interest. In addition, ligands with molecular weight > 250 and outliers as shown on the geometry validation Tables will also be included. Each fit is shown from different orientation to approximate a three-dimensional view.

Electron density around STR B 302:

$2mF_o-DF_c$ (at 0.7 rmsd) in gray
 mF_o-DF_c (at 3 rmsd) in purple (negative)
and green (positive)

**Electron density around STR A 301:**

$2mF_o-DF_c$ (at 0.7 rmsd) in gray
 mF_o-DF_c (at 3 rmsd) in purple (negative)
and green (positive)



6.5 Other polymers [i](#)

There are no such residues in this entry.