



# Full wwPDB X-ray Structure Validation Report ⓘ

Aug 20, 2023 – 08:20 AM EDT

PDB ID : 2IQF  
Title : Crystal structure of Helicobacter pylori catalase compound I  
Authors : Loewen, P.C.; Carpena, X.; Fita, I.  
Deposited on : 2006-10-13  
Resolution : 1.86 Å(reported)

This is a Full wwPDB X-ray Structure Validation Report for a publicly released PDB entry.

We welcome your comments at [validation@mail.wwpdb.org](mailto:validation@mail.wwpdb.org)

A user guide is available at

<https://www.wwpdb.org/validation/2017/XrayValidationReportHelp>

with specific help available everywhere you see the ⓘ symbol.

The types of validation reports are described at

<http://www.wwpdb.org/validation/2017/FAQs#types>.

---

The following versions of software and data (see [references ⓘ](#)) were used in the production of this report:

MolProbity : 4.02b-467  
Mogul : 1.8.5 (274361), CSD as541be (2020)  
Xtriage (Phenix) : 1.13  
EDS : 2.35  
buster-report : 1.1.7 (2018)  
Percentile statistics : 20191225.v01 (using entries in the PDB archive December 25th 2019)  
Refmac : 5.8.0158  
CCP4 : 7.0.044 (Gargrove)  
Ideal geometry (proteins) : Engh & Huber (2001)  
Ideal geometry (DNA, RNA) : Parkinson et al. (1996)  
Validation Pipeline (wwPDB-VP) : 2.35

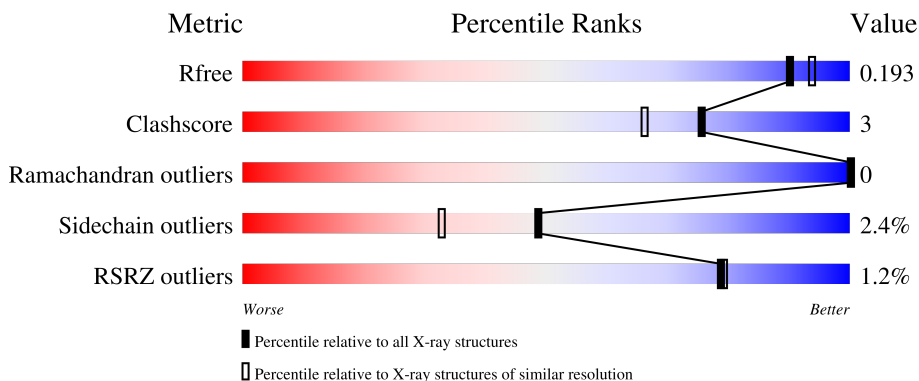
# 1 Overall quality at a glance

The following experimental techniques were used to determine the structure:

*X-RAY DIFFRACTION*

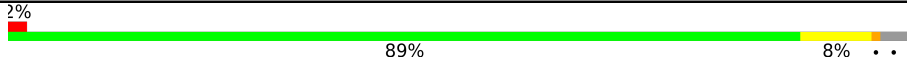
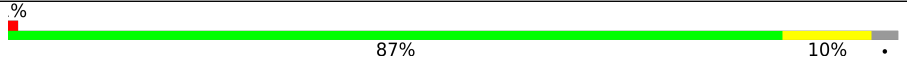
The reported resolution of this entry is 1.86 Å.

Percentile scores (ranging between 0-100) for global validation metrics of the entry are shown in the following graphic. The table shows the number of entries on which the scores are based.



Metric	Whole archive (#Entries)	Similar resolution (#Entries, resolution range(Å))
$R_{free}$	130704	2469 (1.86-1.86)
Clashscore	141614	2625 (1.86-1.86)
Ramachandran outliers	138981	2592 (1.86-1.86)
Sidechain outliers	138945	2592 (1.86-1.86)
RSRZ outliers	127900	2436 (1.86-1.86)

The table below summarises the geometric issues observed across the polymeric chains and their fit to the electron density. The red, orange, yellow and green segments of the lower bar indicate the fraction of residues that contain outliers for  $\geq 3$ , 2, 1 and 0 types of geometric quality criteria respectively. A grey segment represents the fraction of residues that are not modelled. The numeric value for each fraction is indicated below the corresponding segment, with a dot representing fractions  $\leq 5\%$ . The upper red bar (where present) indicates the fraction of residues that have poor fit to the electron density. The numeric value is given above the bar.

Mol	Chain	Length	Quality of chain
1	A	505	 2% 89% 8% ..
1	B	505	 % 87% 10% .

## 2 Entry composition [i](#)

There are 5 unique types of molecules in this entry. The entry contains 9111 atoms, of which 0 are hydrogens and 0 are deuteriums.

In the tables below, the ZeroOcc column contains the number of atoms modelled with zero occupancy, the AltConf column contains the number of residues with at least one atom in alternate conformation and the Trace column contains the number of residues modelled with at most 2 atoms.

- Molecule 1 is a protein called Catalase.

Mol	Chain	Residues	Atoms					ZeroOcc	AltConf	Trace
			Total	C	N	O	S			
1	A	491	4071	2599	706	752	14	0	10	0
1	B	491	4064	2594	703	753	14	0	11	0

There are 20 discrepancies between the modelled and reference sequences:

Chain	Residue	Modelled	Actual	Comment	Reference
A	162	MHO	MET	modified residue	UNP P77872
A	181	MHO	MET	modified residue	UNP P77872
A	234	ILE	VAL	conflict	UNP P77872
A	237	HIS	TYR	conflict	UNP P77872
A	248	ASP	ASN	conflict	UNP P77872
A	255	TYR	PHE	conflict	UNP P77872
A	286	THR	LEU	conflict	UNP P77872
A	292	MHO	MET	modified residue	UNP P77872
A	316	THR	SER	conflict	UNP P77872
A	372	MHO	MET	modified residue	UNP P77872
B	162	MHO	MET	modified residue	UNP P77872
B	181	MHO	MET	modified residue	UNP P77872
B	234	ILE	VAL	conflict	UNP P77872
B	237	HIS	TYR	conflict	UNP P77872
B	248	ASP	ASN	conflict	UNP P77872
B	255	TYR	PHE	conflict	UNP P77872
B	286	THR	LEU	conflict	UNP P77872
B	292	MHO	MET	modified residue	UNP P77872
B	316	THR	SER	conflict	UNP P77872
B	372	MHO	MET	modified residue	UNP P77872

- Molecule 2 is ACETATE ION (three-letter code: ACT) (formula: C<sub>2</sub>H<sub>3</sub>O<sub>2</sub>).



Mol	Chain	Residues	Atoms			ZeroOcc	AltConf
2	A	1	Total	C	O	0	0
			4	2	2		

- Molecule 3 is PROTOPORPHYRIN IX CONTAINING FE (three-letter code: HEM) (formula:  $C_{34}H_{32}FeN_4O_4$ ).



Mol	Chain	Residues	Atoms					ZeroOcc	AltConf
3	A	1	Total	C	Fe	N	O	0	0
			43	34	1	4	4		
3	B	1	Total	C	Fe	N	O	0	0
			43	34	1	4	4		

- Molecule 4 is OXYGEN ATOM (three-letter code: O) (formula: O).

Mol	Chain	Residues	Atoms	ZeroOcc	AltConf
4	A	1	Total O 1 1	0	0
4	B	1	Total O 1 1	0	0

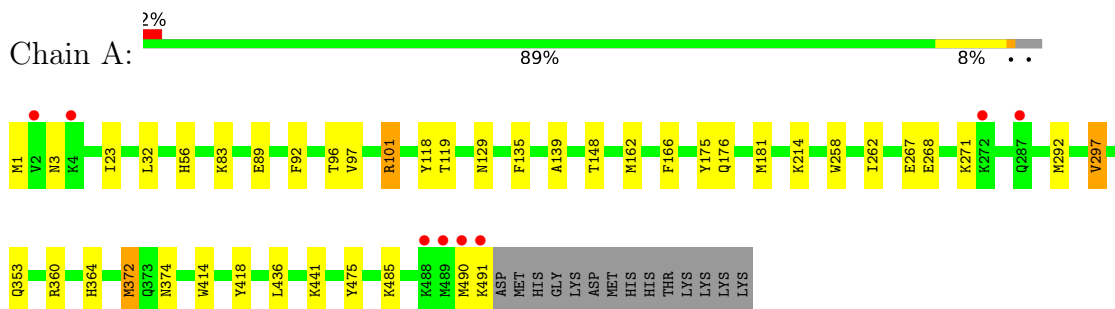
- Molecule 5 is water.

Mol	Chain	Residues	Atoms	ZeroOcc	AltConf
5	A	443	Total O 443 443	0	0
5	B	441	Total O 441 441	0	0

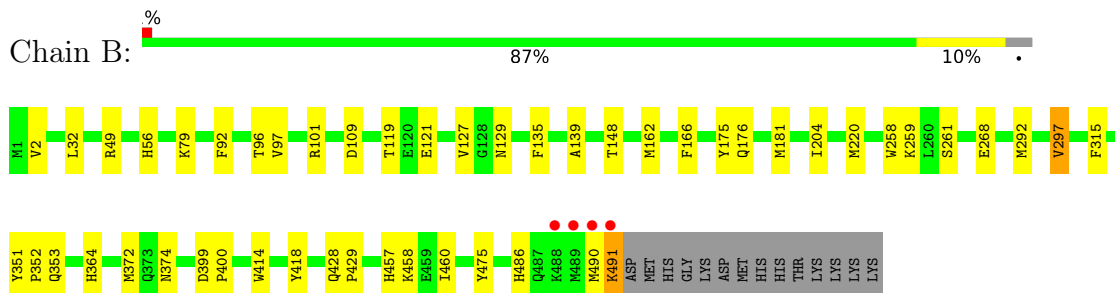
### 3 Residue-property plots [i](#)

These plots are drawn for all protein, RNA, DNA and oligosaccharide chains in the entry. The first graphic for a chain summarises the proportions of the various outlier classes displayed in the second graphic. The second graphic shows the sequence view annotated by issues in geometry and electron density. Residues are color-coded according to the number of geometric quality criteria for which they contain at least one outlier: green = 0, yellow = 1, orange = 2 and red = 3 or more. A red dot above a residue indicates a poor fit to the electron density ( $RSRZ > 2$ ). Stretches of 2 or more consecutive residues without any outlier are shown as a green connector. Residues present in the sample, but not in the model, are shown in grey.

- Molecule 1: Catalase



- Molecule 1: Catalase



## 4 Data and refinement statistics

Property	Value	Source
Space group	P 21 21 2	Depositor
Cell constants a, b, c, $\alpha$ , $\beta$ , $\gamma$	64.39Å 154.29Å 95.81Å 90.00° 90.00° 90.00°	Depositor
Resolution (Å)	37.00 – 1.86 29.94 – 1.86	Depositor EDS
% Data completeness (in resolution range)	96.4 (37.00-1.86) 96.5 (29.94-1.86)	Depositor EDS
$R_{merge}$	(Not available)	Depositor
$R_{sym}$	0.08	Depositor
$\langle I/\sigma(I) \rangle$ <sup>1</sup>	3.85 (at 1.87Å)	Xtrriage
Refinement program	REFMAC 5.2.0019	Depositor
R, $R_{free}$	0.148 , 0.188 0.156 , 0.193	Depositor DCC
$R_{free}$ test set	3927 reflections (5.03%)	wwPDB-VP
Wilson B-factor (Å <sup>2</sup> )	15.4	Xtrriage
Anisotropy	0.070	Xtrriage
Bulk solvent $k_{sol}$ (e/Å <sup>3</sup> ), $B_{sol}$ (Å <sup>2</sup> )	0.37 , 49.9	EDS
L-test for twinning <sup>2</sup>	$\langle  L  \rangle = 0.49$ , $\langle L^2 \rangle = 0.32$	Xtrriage
Estimated twinning fraction	No twinning to report.	Xtrriage
$F_o, F_c$ correlation	0.96	EDS
Total number of atoms	9111	wwPDB-VP
Average B, all atoms (Å <sup>2</sup> )	17.0	wwPDB-VP

Xtrriage's analysis on translational NCS is as follows: *The largest off-origin peak in the Patterson function is 4.76% of the height of the origin peak. No significant pseudotranslation is detected.*

<sup>1</sup>Intensities estimated from amplitudes.

<sup>2</sup>Theoretical values of  $\langle |L| \rangle$ ,  $\langle L^2 \rangle$  for acentric reflections are 0.5, 0.333 respectively for untwinned datasets, and 0.375, 0.2 for perfectly twinned datasets.

## 5 Model quality i

### 5.1 Standard geometry i

Bond lengths and bond angles in the following residue types are not validated in this section: HEM, O, ACT, MHO

The Z score for a bond length (or angle) is the number of standard deviations the observed value is removed from the expected value. A bond length (or angle) with  $|Z| > 5$  is considered an outlier worth inspection. RMSZ is the root-mean-square of all Z scores of the bond lengths (or angles).

Mol	Chain	Bond lengths		Bond angles	
		RMSZ	# Z  >5	RMSZ	# Z  >5
1	A	0.70	0/4205	0.74	2/5686 (0.0%)
1	B	0.74	0/4200	0.78	6/5680 (0.1%)
All	All	0.72	0/8405	0.76	8/11366 (0.1%)

There are no bond length outliers.

All (8) bond angle outliers are listed below:

Mol	Chain	Res	Type	Atoms	Z	Observed(°)	Ideal(°)
1	B	101[A]	ARG	N-CA-C	6.46	128.44	111.00
1	B	101[B]	ARG	N-CA-C	6.46	128.44	111.00
1	B	297[A]	VAL	CB-CA-C	-5.29	101.34	111.40
1	B	297[B]	VAL	CB-CA-C	-5.29	101.34	111.40
1	B	399	ASP	CB-CG-OD2	5.28	123.05	118.30
1	A	101[A]	ARG	N-CA-C	-5.09	97.25	111.00
1	A	101[B]	ARG	N-CA-C	-5.09	97.25	111.00
1	B	49	ARG	NE-CZ-NH1	5.07	122.84	120.30

There are no chirality outliers.

There are no planarity outliers.

### 5.2 Too-close contacts i

In the following table, the Non-H and H(model) columns list the number of non-hydrogen atoms and hydrogen atoms in the chain respectively. The H(added) column lists the number of hydrogen atoms added and optimized by MolProbity. The Clashes column lists the number of clashes within the asymmetric unit, whereas Symm-Clashes lists symmetry-related clashes.

Mol	Chain	Non-H	H(model)	H(added)	Clashes	Symm-Clashes
1	A	4071	0	3892	29	1

*Continued on next page...*



*Continued from previous page...*

Mol	Chain	Non-H	H(model)	H(added)	Clashes	Symm-Clashes
1	B	4064	0	3874	25	0
2	A	4	0	3	0	0
3	A	43	0	30	6	0
3	B	43	0	30	2	0
4	A	1	0	0	0	0
4	B	1	0	0	0	0
5	A	443	0	0	5	4
5	B	441	0	0	3	4
All	All	9111	0	7829	50	5

The all-atom clashscore is defined as the number of clashes found per 1000 atoms (including hydrogen atoms). The all-atom clashscore for this structure is 3.

All (50) close contacts within the same asymmetric unit are listed below, sorted by their clash magnitude.

Atom-1	Atom-2	Interatomic distance (Å)	Clash overlap (Å)
1:A:32[A]:LEU:HD23	1:B:32[A]:LEU:HD23	1.43	0.97
1:A:32[A]:LEU:HD23	1:B:32[A]:LEU:CD2	2.05	0.86
1:A:89:GLU:OE1	5:A:1135:HOH:O	1.93	0.86
1:A:32[A]:LEU:CD2	1:B:32[A]:LEU:HD23	2.11	0.79
1:A:32[A]:LEU:CD2	1:B:32[A]:LEU:CD2	2.65	0.74
1:A:360[A]:ARG:NH1	5:A:1330:HOH:O	2.22	0.73
1:A:101[B]:ARG:O	5:A:1323:HOH:O	2.06	0.73
1:B:353:GLN:HE22	1:B:374:ASN:H	1.43	0.67
1:A:353:GLN:HE22	1:A:374:ASN:H	1.46	0.64
1:A:139:ALA:HB2	3:A:550:HEM:HBB1	1.83	0.59
1:B:364:HIS:HD2	5:B:886:HOH:O	1.84	0.59
1:B:92:PHE:CZ	1:B:297[B]:VAL:HG11	2.43	0.54
1:A:490:MET:N	1:A:491:LYS:HA	2.23	0.53
1:A:129:ASN:CG	3:A:550:HEM:HAC	2.29	0.52
1:A:23:ILE:HG22	1:A:32[A]:LEU:HD12	1.90	0.52
1:A:139:ALA:CB	3:A:550:HEM:HBB1	2.40	0.51
1:B:490:MET:N	1:B:491:LYS:C	2.64	0.51
1:A:364:HIS:HD2	5:A:1107:HOH:O	1.93	0.50
1:B:351:TYR:N	1:B:352:PRO:CD	2.74	0.50
1:A:139:ALA:CB	3:A:550:HEM:CBB	2.91	0.48
1:A:118:TYR:CD1	1:A:360[B]:ARG:HD3	2.49	0.48
1:A:436:LEU:O	1:A:441:LYS:NZ	2.47	0.47
1:A:1:MET:HE3	1:A:3:ASN:HD21	1.80	0.47
1:A:56:HIS:CE1	1:A:97:VAL:HG22	2.52	0.45
1:A:139:ALA:HB2	3:A:550:HEM:CBB	2.44	0.45

*Continued on next page...*

Continued from previous page...

Atom-1	Atom-2	Interatomic distance (Å)	Clash overlap (Å)
1:B:56:HIS:HA	1:B:96:THR:O	2.17	0.44
1:A:129:ASN:ND2	3:A:550:HEM:HAC	2.32	0.44
1:A:258:TRP:HB2	1:A:297[B]:VAL:HG13	2.00	0.44
1:A:92:PHE:CZ	1:A:297[B]:VAL:HG21	2.53	0.44
1:B:129:ASN:CG	3:B:550:HEM:HAC	2.38	0.44
1:B:135:PHE:CZ	1:B:176:GLN:HG3	2.53	0.43
1:B:258:TRP:HB2	1:B:297[B]:VAL:HG23	1.99	0.43
1:A:135:PHE:CZ	1:A:176:GLN:HG3	2.54	0.43
1:B:148:THR:HG21	1:B:166:PHE:HB2	2.00	0.43
1:B:428:GLN:N	1:B:429:PRO:HD2	2.33	0.43
1:B:79:LYS:HE3	5:B:935:HOH:O	2.18	0.43
1:B:486:HIS:O	1:B:490:MET:HG2	2.19	0.42
1:A:268[B]:GLU:HG2	5:A:1250:HOH:O	2.19	0.42
1:B:79:LYS:HG3	1:B:121:GLU:HG3	2.02	0.42
1:A:135:PHE:CE2	1:A:176:GLN:HG3	2.55	0.41
1:A:56:HIS:HA	1:A:96:THR:O	2.20	0.41
1:B:204:ILE:HD12	1:B:400:PRO:HG2	2.01	0.41
1:B:220:MET:CE	1:B:259:LYS:HB2	2.51	0.41
1:B:261[B]:SER:HB3	5:B:778:HOH:O	2.20	0.41
1:A:148:THR:HG21	1:A:166:PHE:HB2	2.02	0.41
1:B:127:VAL:HG22	1:B:315:PHE:HB3	2.02	0.41
1:B:139:ALA:HB2	3:B:550:HEM:HBB1	2.03	0.41
1:B:457:HIS:HB2	1:B:460:ILE:HD12	2.02	0.40
1:B:56:HIS:CE1	1:B:97:VAL:HG22	2.56	0.40
1:A:214:LYS:O	1:A:262:ILE:HA	2.21	0.40

All (5) symmetry-related close contacts are listed below. The label for Atom-2 includes the symmetry operator and encoded unit-cell translations to be applied.

Atom-1	Atom-2	Interatomic distance (Å)	Clash overlap (Å)
5:A:1320:HOH:O	5:B:914:HOH:O[2_565]	2.06	0.14
5:A:1342:HOH:O	5:B:990:HOH:O[2_565]	2.09	0.11
5:A:1329:HOH:O	5:B:796:HOH:O[2_565]	2.12	0.08
1:A:372:MHO:OD1	5:B:686:HOH:O[2_565]	2.15	0.05
5:A:1161:HOH:O	5:A:1254:HOH:O[2_565]	2.18	0.02

## 5.3 Torsion angles [i](#)

### 5.3.1 Protein backbone [i](#)

In the following table, the Percentiles column shows the percent Ramachandran outliers of the chain as a percentile score with respect to all X-ray entries followed by that with respect to entries of similar resolution.

The Analysed column shows the number of residues for which the backbone conformation was analysed, and the total number of residues.

Mol	Chain	Analysed	Favoured	Allowed	Outliers	Percentiles	
1	A	495/505 (98%)	473 (96%)	22 (4%)	0	100	100
1	B	495/505 (98%)	479 (97%)	16 (3%)	0	100	100
All	All	990/1010 (98%)	952 (96%)	38 (4%)	0	100	100

There are no Ramachandran outliers to report.

### 5.3.2 Protein sidechains [i](#)

In the following table, the Percentiles column shows the percent sidechain outliers of the chain as a percentile score with respect to all X-ray entries followed by that with respect to entries of similar resolution.

The Analysed column shows the number of residues for which the sidechain conformation was analysed, and the total number of residues.

Mol	Chain	Analysed	Rotameric	Outliers	Percentiles	
1	A	434/438 (99%)	423 (98%)	11 (2%)	47	31
1	B	434/438 (99%)	423 (98%)	11 (2%)	47	31
All	All	868/876 (99%)	846 (98%)	22 (2%)	49	31

All (22) residues with a non-rotameric sidechain are listed below:

Mol	Chain	Res	Type
1	A	83	LYS
1	A	119	THR
1	A	175	TYR
1	A	267	GLU
1	A	271	LYS
1	A	297[A]	VAL
1	A	297[B]	VAL
1	A	414	TRP

*Continued on next page...*

*Continued from previous page...*

Mol	Chain	Res	Type
1	A	418	TYR
1	A	475	TYR
1	A	485	LYS
1	B	2	VAL
1	B	109	ASP
1	B	119	THR
1	B	175	TYR
1	B	268[A]	GLU
1	B	268[B]	GLU
1	B	414	TRP
1	B	418	TYR
1	B	458	LYS
1	B	475	TYR
1	B	491	LYS

Sometimes sidechains can be flipped to improve hydrogen bonding and reduce clashes. All (7) such sidechains are listed below:

Mol	Chain	Res	Type
1	A	149	GLN
1	A	353	GLN
1	A	364	HIS
1	B	287	GLN
1	B	353	GLN
1	B	364	HIS
1	B	487	GLN

### 5.3.3 RNA [i](#)

There are no RNA molecules in this entry.

## 5.4 Non-standard residues in protein, DNA, RNA chains [i](#)

8 non-standard protein/DNA/RNA residues are modelled in this entry.

In the following table, the Counts columns list the number of bonds (or angles) for which Mogul statistics could be retrieved, the number of bonds (or angles) that are observed in the model and the number of bonds (or angles) that are defined in the Chemical Component Dictionary. The Link column lists molecule types, if any, to which the group is linked. The Z score for a bond length (or angle) is the number of standard deviations the observed value is removed from the expected value. A bond length (or angle) with  $|Z| > 2$  is considered an outlier worth inspection. RMSZ is the root-mean-square of all Z scores of the bond lengths (or angles).

Mol	Type	Chain	Res	Link	Bond lengths			Bond angles		
					Counts	RMSZ	# Z  > 2	Counts	RMSZ	# Z  > 2
1	MHO	A	372	1	7,8,9	3.44	1 (14%)	4,9,11	3.43	2 (50%)
1	MHO	B	292	1	7,8,9	3.80	2 (28%)	4,9,11	3.38	2 (50%)
1	MHO	A	292	1	7,8,9	3.82	2 (28%)	4,9,11	3.07	3 (75%)
1	MHO	B	162	1	7,8,9	3.31	2 (28%)	4,9,11	3.88	2 (50%)
1	MHO	A	162	1	7,8,9	3.50	2 (28%)	4,9,11	4.32	3 (75%)
1	MHO	A	181	1	7,8,9	3.49	2 (28%)	4,9,11	2.18	2 (50%)
1	MHO	B	372	1	7,8,9	3.78	2 (28%)	4,9,11	2.86	2 (50%)
1	MHO	B	181	1	7,8,9	3.18	2 (28%)	4,9,11	1.72	2 (50%)

In the following table, the Chirals column lists the number of chiral outliers, the number of chiral centers analysed, the number of these observed in the model and the number defined in the Chemical Component Dictionary. Similar counts are reported in the Torsion and Rings columns. '-' means no outliers of that kind were identified.

Mol	Type	Chain	Res	Link	Chirals	Torsions	Rings
1	MHO	A	372	1	-	3/6/7/9	-
1	MHO	B	292	1	-	0/6/7/9	-
1	MHO	A	292	1	-	0/6/7/9	-
1	MHO	B	162	1	-	1/6/7/9	-
1	MHO	A	162	1	-	1/6/7/9	-
1	MHO	A	181	1	-	1/6/7/9	-
1	MHO	B	372	1	-	3/6/7/9	-
1	MHO	B	181	1	-	1/6/7/9	-

All (15) bond length outliers are listed below:

Mol	Chain	Res	Type	Atoms	Z	Observed(Å)	Ideal(Å)
1	B	292	MHO	OD1-SD	9.58	1.76	1.50
1	B	372	MHO	OD1-SD	9.51	1.76	1.50
1	A	292	MHO	OD1-SD	9.39	1.75	1.50
1	A	372	MHO	OD1-SD	8.72	1.74	1.50
1	A	162	MHO	OD1-SD	8.52	1.73	1.50
1	A	181	MHO	OD1-SD	8.51	1.73	1.50
1	B	162	MHO	OD1-SD	8.08	1.72	1.50
1	B	181	MHO	OD1-SD	7.58	1.71	1.50
1	B	181	MHO	CG-SD	-3.33	1.65	1.80
1	A	181	MHO	CG-SD	-3.21	1.65	1.80
1	A	292	MHO	CG-SD	-3.09	1.66	1.80
1	B	372	MHO	CG-SD	-2.83	1.67	1.80
1	B	162	MHO	CG-SD	-2.74	1.67	1.80

Continued on next page...

*Continued from previous page...*

Mol	Chain	Res	Type	Atoms	Z	Observed(Å)	Ideal(Å)
1	A	162	MHO	CG-SD	-2.73	1.67	1.80
1	B	292	MHO	CG-SD	-2.44	1.69	1.80

All (18) bond angle outliers are listed below:

Mol	Chain	Res	Type	Atoms	Z	Observed(°)	Ideal(°)
1	B	162	MHO	CE-SD-CG	6.79	113.16	97.71
1	A	162	MHO	CE-SD-CG	6.56	112.63	97.71
1	A	372	MHO	CE-SD-CG	6.00	111.36	97.71
1	B	292	MHO	CE-SD-CG	5.57	110.38	97.71
1	A	292	MHO	CE-SD-CG	4.97	109.03	97.71
1	A	162	MHO	OD1-SD-CG	-4.91	92.48	106.03
1	B	372	MHO	CE-SD-CG	4.75	108.53	97.71
1	B	292	MHO	OD1-SD-CE	3.50	113.34	106.25
1	B	162	MHO	OD1-SD-CG	-3.22	97.14	106.03
1	A	181	MHO	OD1-SD-CG	-3.19	97.24	106.03
1	A	372	MHO	OD1-SD-CE	3.11	112.55	106.25
1	B	372	MHO	OD1-SD-CE	3.06	112.45	106.25
1	A	162	MHO	OD1-SD-CE	2.62	111.55	106.25
1	A	292	MHO	OD1-SD-CE	2.52	111.35	106.25
1	A	292	MHO	OD1-SD-CG	-2.51	99.12	106.03
1	A	181	MHO	CE-SD-CG	2.28	102.90	97.71
1	B	181	MHO	OD1-SD-CG	-2.07	100.33	106.03
1	B	181	MHO	CE-SD-CG	2.03	102.33	97.71

There are no chirality outliers.

All (10) torsion outliers are listed below:

Mol	Chain	Res	Type	Atoms
1	B	162	MHO	CB-CG-SD-OD1
1	A	162	MHO	CB-CG-SD-OD1
1	A	372	MHO	CB-CG-SD-OD1
1	B	372	MHO	CB-CG-SD-OD1
1	A	372	MHO	CB-CG-SD-CE
1	A	181	MHO	CA-CB-CG-SD
1	A	372	MHO	CA-CB-CG-SD
1	B	181	MHO	CA-CB-CG-SD
1	B	372	MHO	CA-CB-CG-SD
1	B	372	MHO	CB-CG-SD-CE

There are no ring outliers.

1 monomer is involved in 1 short contact:

Mol	Chain	Res	Type	Clashes	Symm-Clashes
1	A	372	MHO	0	1

## 5.5 Carbohydrates [i](#)

There are no monosaccharides in this entry.

## 5.6 Ligand geometry [i](#)

Of 5 ligands modelled in this entry, 2 are monoatomic - leaving 3 for Mogul analysis.

In the following table, the Counts columns list the number of bonds (or angles) for which Mogul statistics could be retrieved, the number of bonds (or angles) that are observed in the model and the number of bonds (or angles) that are defined in the Chemical Component Dictionary. The Link column lists molecule types, if any, to which the group is linked. The Z score for a bond length (or angle) is the number of standard deviations the observed value is removed from the expected value. A bond length (or angle) with  $|Z| > 2$  is considered an outlier worth inspection. RMSZ is the root-mean-square of all Z scores of the bond lengths (or angles).

Mol	Type	Chain	Res	Link	Bond lengths			Bond angles		
					Counts	RMSZ	# $ Z  > 2$	Counts	RMSZ	# $ Z  > 2$
3	HEM	B	550	1,4	41,50,50	1.67	5 (12%)	45,82,82	2.14	14 (31%)
2	ACT	A	900	-	3,3,3	0.94	0	3,3,3	2.76	2 (66%)
3	HEM	A	550	1,4	41,50,50	1.75	8 (19%)	45,82,82	1.85	14 (31%)

In the following table, the Chirals column lists the number of chiral outliers, the number of chiral centers analysed, the number of these observed in the model and the number defined in the Chemical Component Dictionary. Similar counts are reported in the Torsion and Rings columns. '-' means no outliers of that kind were identified.

Mol	Type	Chain	Res	Link	Chirals	Torsions	Rings
3	HEM	B	550	1,4	-	2/12/54/54	-
3	HEM	A	550	1,4	-	4/12/54/54	-

All (13) bond length outliers are listed below:

Mol	Chain	Res	Type	Atoms	Z	Observed(Å)	Ideal(Å)
3	B	550	HEM	C3D-C2D	6.71	1.51	1.36
3	A	550	HEM	C3D-C2D	6.61	1.50	1.36
3	A	550	HEM	C3C-CAC	3.73	1.55	1.47
3	B	550	HEM	C3C-CAC	3.30	1.54	1.47

*Continued on next page...*

*Continued from previous page...*

Mol	Chain	Res	Type	Atoms	Z	Observed(Å)	Ideal(Å)
3	A	550	HEM	C3C-C2C	-3.00	1.36	1.40
3	B	550	HEM	C3C-C2C	-2.92	1.36	1.40
3	A	550	HEM	C2C-C1C	2.64	1.48	1.42
3	B	550	HEM	FE-NB	2.33	2.08	1.96
3	A	550	HEM	CMB-C2B	2.30	1.55	1.50
3	B	550	HEM	O1A-CGA	2.17	1.29	1.22
3	A	550	HEM	CMC-C2C	2.16	1.56	1.51
3	A	550	HEM	CMA-C3A	2.13	1.56	1.51
3	A	550	HEM	CAB-C3B	2.12	1.53	1.47

All (30) bond angle outliers are listed below:

Mol	Chain	Res	Type	Atoms	Z	Observed(°)	Ideal(°)
3	B	550	HEM	C4D-ND-C1D	5.73	110.99	105.07
3	B	550	HEM	C1B-NB-C4B	4.80	110.03	105.07
3	B	550	HEM	CMA-C3A-C4A	-4.25	121.93	128.46
3	A	550	HEM	C4C-CHD-C1D	4.14	128.03	122.56
3	B	550	HEM	C4C-CHD-C1D	4.01	127.85	122.56
3	A	550	HEM	CAD-CBD-CGD	-3.77	105.50	113.60
3	A	550	HEM	C4D-ND-C1D	3.70	108.89	105.07
2	A	900	ACT	OXT-C-O	-3.57	108.90	122.05
3	A	550	HEM	CBA-CAA-C2A	-3.50	106.65	112.62
3	A	550	HEM	C2C-C3C-C4C	3.29	109.20	106.90
3	B	550	HEM	CBA-CAA-C2A	-3.29	107.00	112.62
3	B	550	HEM	CAD-CBD-CGD	-3.19	106.74	113.60
2	A	900	ACT	OXT-C-CH3	3.17	128.29	115.18
3	B	550	HEM	CMA-C3A-C2A	2.97	130.54	124.94
3	A	550	HEM	C4B-C3B-C2B	2.97	109.47	107.11
3	A	550	HEM	CMD-C2D-C1D	2.95	129.54	125.04
3	B	550	HEM	O1A-CGA-CBA	-2.88	113.82	123.08
3	B	550	HEM	CMD-C2D-C1D	2.77	129.25	125.04
3	A	550	HEM	CHA-C4D-ND	2.54	127.52	124.38
3	B	550	HEM	C2C-C3C-C4C	2.53	108.67	106.90
3	A	550	HEM	C1B-NB-C4B	2.49	107.65	105.07
3	B	550	HEM	CAD-C3D-C4D	2.41	128.88	124.66
3	A	550	HEM	C1D-C2D-C3D	-2.40	104.43	106.96
3	B	550	HEM	C2B-C1B-NB	-2.37	107.03	109.84
3	A	550	HEM	C3C-C4C-NC	-2.34	106.52	110.94
3	B	550	HEM	C4B-C3B-C2B	2.30	108.94	107.11
3	A	550	HEM	CMA-C3A-C4A	-2.20	125.09	128.46
3	A	550	HEM	O2D-CGD-CBD	2.15	120.93	114.03
3	A	550	HEM	O1D-CGD-CBD	-2.13	116.25	123.08

*Continued on next page...*



*Continued from previous page...*

Mol	Chain	Res	Type	Atoms	Z	Observed(°)	Ideal(°)
3	B	550	HEM	CHC-C4B-NB	2.08	126.69	124.43

There are no chirality outliers.

All (6) torsion outliers are listed below:

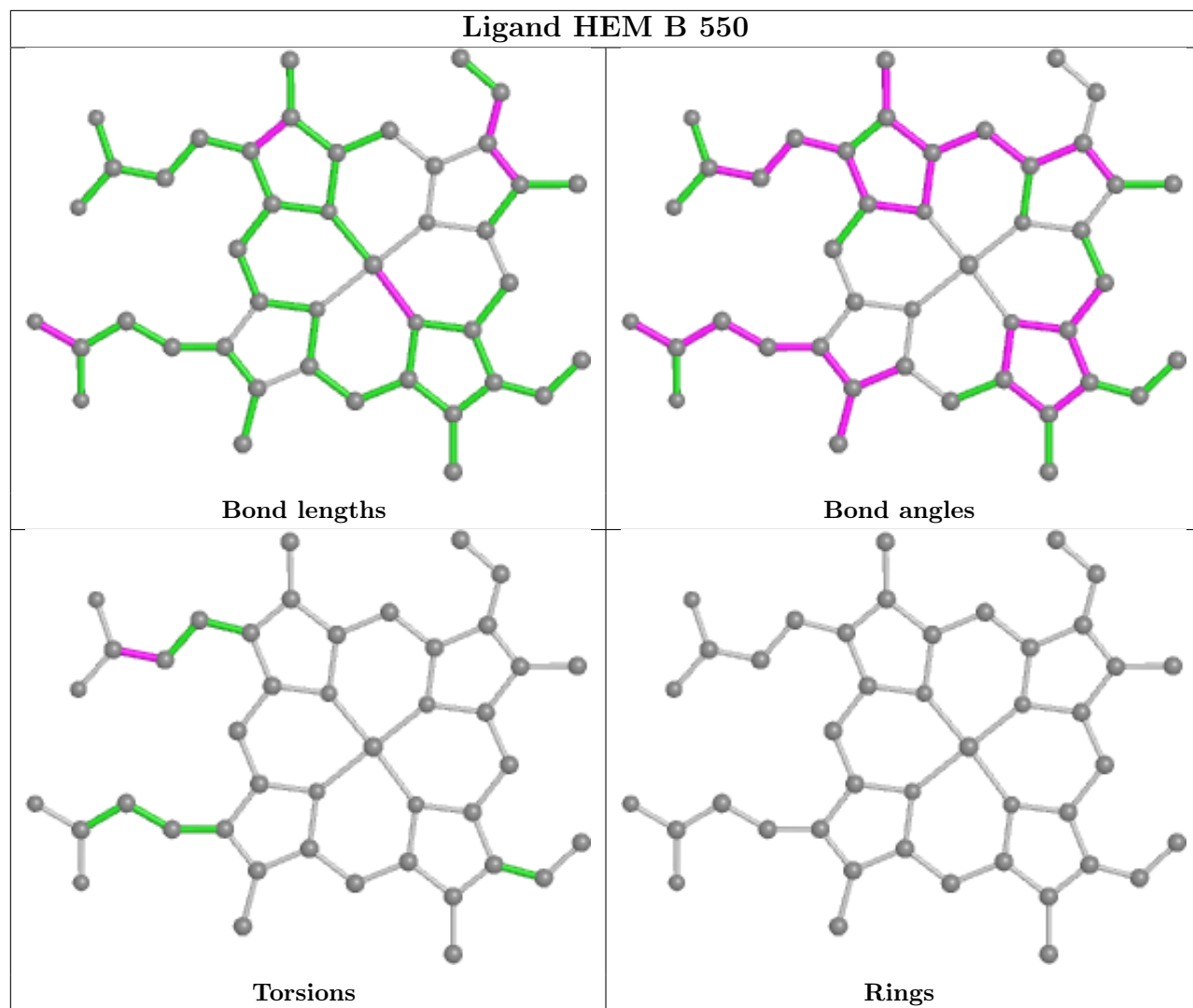
Mol	Chain	Res	Type	Atoms
3	A	550	HEM	C2B-C3B-CAB-CBB
3	A	550	HEM	CAD-CBD-CGD-O2D
3	B	550	HEM	CAD-CBD-CGD-O2D
3	A	550	HEM	CAD-CBD-CGD-O1D
3	A	550	HEM	C4B-C3B-CAB-CBB
3	B	550	HEM	CAD-CBD-CGD-O1D

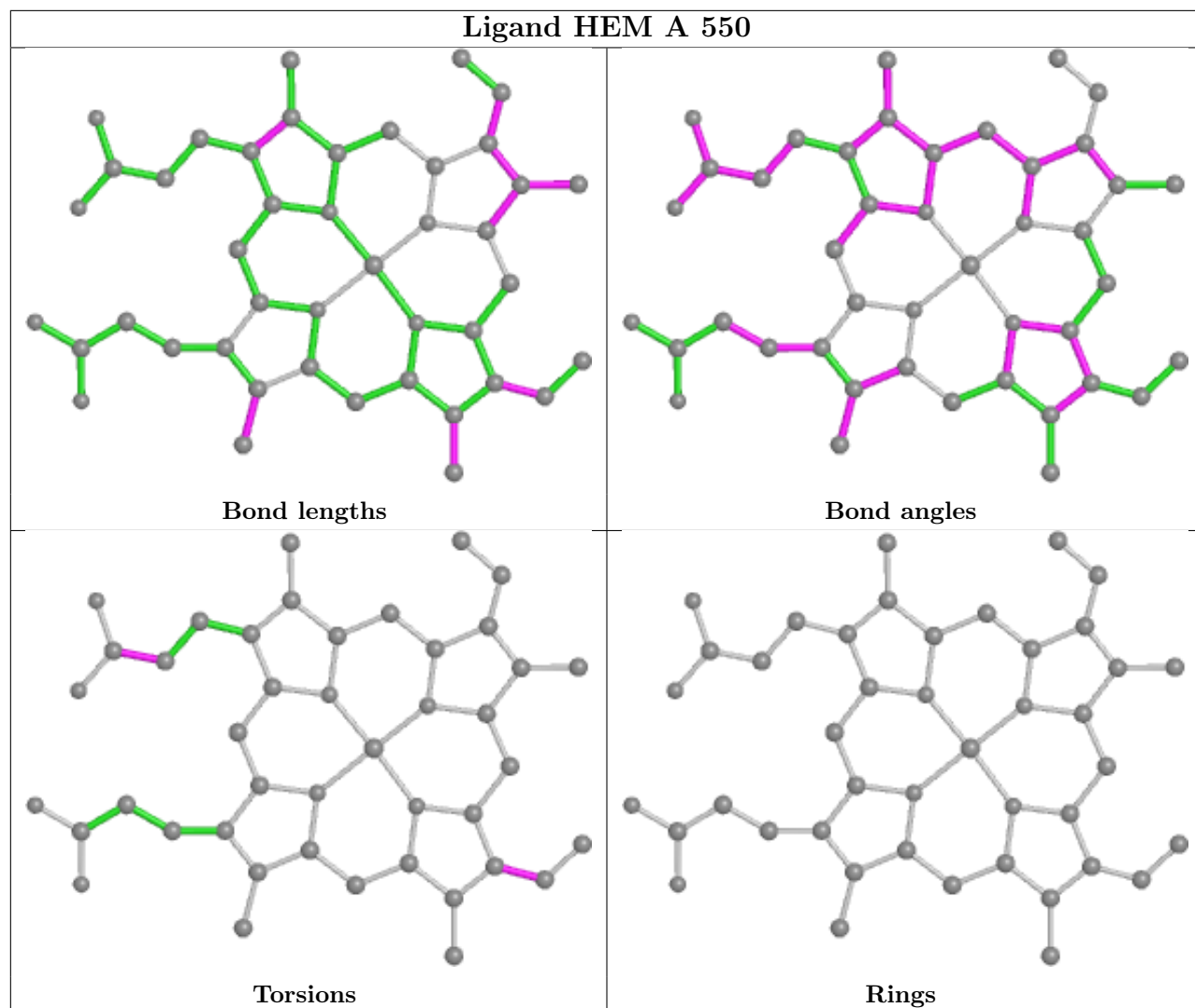
There are no ring outliers.

2 monomers are involved in 8 short contacts:

Mol	Chain	Res	Type	Clashes	Symm-Clashes
3	B	550	HEM	2	0
3	A	550	HEM	6	0

The following is a two-dimensional graphical depiction of Mogul quality analysis of bond lengths, bond angles, torsion angles, and ring geometry for all instances of the Ligand of Interest. In addition, ligands with molecular weight > 250 and outliers as shown on the validation Tables will also be included. For torsion angles, if less than 5% of the Mogul distribution of torsion angles is within 10 degrees of the torsion angle in question, then that torsion angle is considered an outlier. Any bond that is central to one or more torsion angles identified as an outlier by Mogul will be highlighted in the graph. For rings, the root-mean-square deviation (RMSD) between the ring in question and similar rings identified by Mogul is calculated over all ring torsion angles. If the average RMSD is greater than 60 degrees and the minimal RMSD between the ring in question and any Mogul-identified rings is also greater than 60 degrees, then that ring is considered an outlier. The outliers are highlighted in purple. The color gray indicates Mogul did not find sufficient equivalents in the CSD to analyse the geometry.





## 5.7 Other polymers [i](#)

There are no such residues in this entry.

## 5.8 Polymer linkage issues [i](#)

There are no chain breaks in this entry.

## 6 Fit of model and data [i](#)

### 6.1 Protein, DNA and RNA chains [i](#)

In the following table, the column labelled '#RSRZ > 2' contains the number (and percentage) of RSRZ outliers, followed by percent RSRZ outliers for the chain as percentile scores relative to all X-ray entries and entries of similar resolution. The OWAB column contains the minimum, median, 95<sup>th</sup> percentile and maximum values of the occupancy-weighted average B-factor per residue. The column labelled 'Q < 0.9' lists the number of (and percentage) of residues with an average occupancy less than 0.9.

Mol	Chain	Analysed	<RSRZ>	#RSRZ>2	OWAB(Å <sup>2</sup> )	Q<0.9
1	A	487/505 (96%)	-0.32	8 (1%) 72 72	7, 17, 29, 67	1 (0%)
1	B	487/505 (96%)	-0.49	4 (0%) 86 86	6, 13, 25, 61	2 (0%)
All	All	974/1010 (96%)	-0.40	12 (1%) 79 79	6, 15, 28, 67	3 (0%)

All (12) RSRZ outliers are listed below:

Mol	Chain	Res	Type	RSRZ
1	A	490	MET	7.5
1	B	490	MET	6.4
1	A	489	MET	6.2
1	B	491	LYS	5.9
1	A	491	LYS	5.1
1	B	489	MET	4.6
1	A	488	LYS	3.6
1	A	287	GLN	3.5
1	A	272	LYS	3.0
1	A	2	VAL	2.5
1	B	488	LYS	2.5
1	A	4	LYS	2.3

### 6.2 Non-standard residues in protein, DNA, RNA chains [i](#)

In the following table, the Atoms column lists the number of modelled atoms in the group and the number defined in the chemical component dictionary. The B-factors column lists the minimum, median, 95<sup>th</sup> percentile and maximum values of B factors of atoms in the group. The column labelled 'Q < 0.9' lists the number of atoms with occupancy less than 0.9.

Mol	Type	Chain	Res	Atoms	RSCC	RSR	B-factors(Å <sup>2</sup> )	Q<0.9
1	MHO	A	292	9/10	0.94	0.09	23,25,36,36	0
1	MHO	A	162	9/10	0.97	0.10	14,15,20,25	0

*Continued on next page...*

Continued from previous page...

Mol	Type	Chain	Res	Atoms	RSCC	RSR	B-factors( $\text{\AA}^2$ )	Q<0.9
1	MHO	A	372	9/10	0.97	0.09	10,12,23,28	0
1	MHO	B	162	9/10	0.97	0.09	7,10,17,19	0
1	MHO	B	181	9/10	0.97	0.09	12,13,17,18	0
1	MHO	B	292	9/10	0.97	0.09	16,19,32,33	0
1	MHO	B	372	9/10	0.97	0.09	11,13,21,26	0
1	MHO	A	181	9/10	0.98	0.08	18,19,23,24	0

### 6.3 Carbohydrates [i](#)

There are no monosaccharides in this entry.

### 6.4 Ligands [i](#)

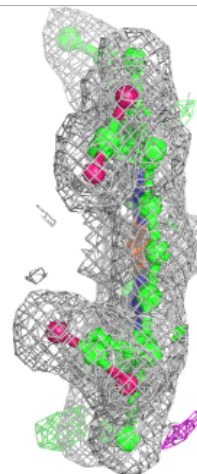
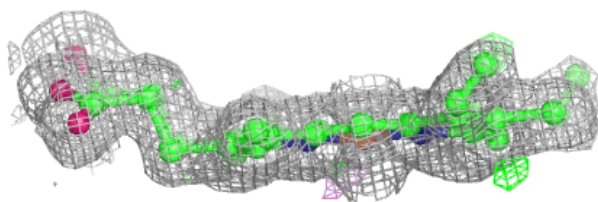
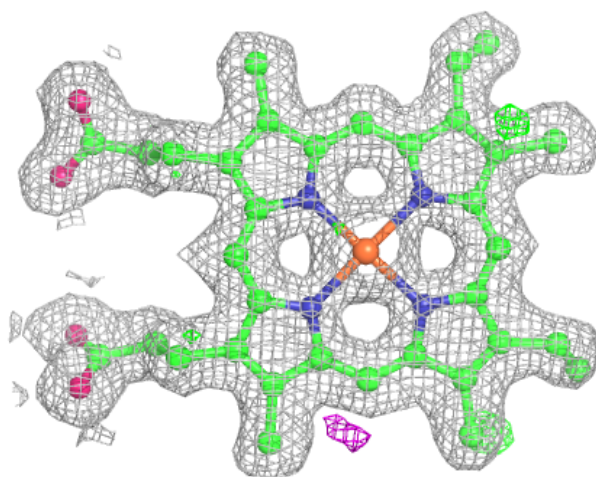
In the following table, the Atoms column lists the number of modelled atoms in the group and the number defined in the chemical component dictionary. The B-factors column lists the minimum, median, 95<sup>th</sup> percentile and maximum values of B factors of atoms in the group. The column labelled 'Q < 0.9' lists the number of atoms with occupancy less than 0.9.

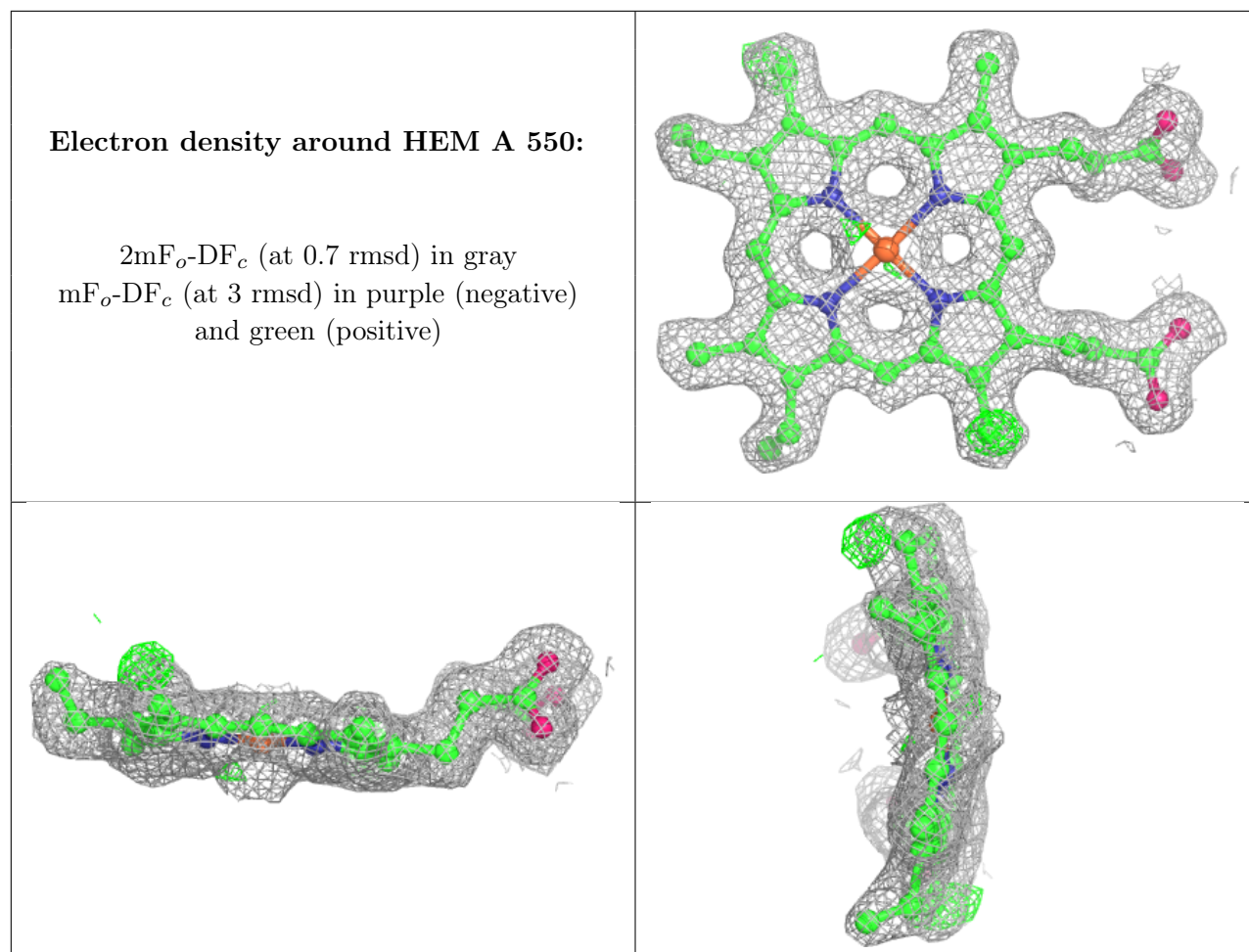
Mol	Type	Chain	Res	Atoms	RSCC	RSR	B-factors( $\text{\AA}^2$ )	Q<0.9
2	ACT	A	900	4/4	0.96	0.11	20,21,21,22	0
4	O	A	551	1/1	0.97	0.35	16,16,16,16	1
3	HEM	B	550	43/43	0.98	0.10	7,10,16,19	0
3	HEM	A	550	43/43	0.98	0.09	6,13,17,21	1
4	O	B	551	1/1	0.99	0.19	13,13,13,13	1

The following is a graphical depiction of the model fit to experimental electron density of all instances of the Ligand of Interest. In addition, ligands with molecular weight > 250 and outliers as shown on the geometry validation Tables will also be included. Each fit is shown from different orientation to approximate a three-dimensional view.

**Electron density around HEM B 550:**

$2mF_o-DF_c$  (at 0.7 rmsd) in gray  
 $mF_o-DF_c$  (at 3 rmsd) in purple (negative)  
and green (positive)





## 6.5 Other polymers [i](#)

There are no such residues in this entry.