



# Full wwPDB X-ray Structure Validation Report ⓘ

Oct 11, 2021 – 08:20 AM EDT

PDB ID : 2R09  
Title : Crystal Structure of Autoinhibited Form of Grp1 Arf GTPase Exchange Factor  
Authors : DiNitto, J.P.; Delprato, A.; Gabe Lee, M.T.; Cronin, T.C.; Huang, S.; Guilhaume, A.; Czech, M.P.; Lambright, D.G.  
Deposited on : 2007-08-17  
Resolution : 1.90 Å(reported)

This is a Full wwPDB X-ray Structure Validation Report for a publicly released PDB entry.

We welcome your comments at [validation@mail.wwpdb.org](mailto:validation@mail.wwpdb.org)

A user guide is available at

<https://www.wwpdb.org/validation/2017/XrayValidationReportHelp>

with specific help available everywhere you see the ⓘ symbol.

---

The following versions of software and data (see [references ⓘ](#)) were used in the production of this report:

MolProbity : 4.02b-467  
Mogul : 1.8.5 (274361), CSD as541be (2020)  
Xtriage (Phenix) : 1.13  
EDS : 2.23.2  
buster-report : 1.1.7 (2018)  
Percentile statistics : 20191225.v01 (using entries in the PDB archive December 25th 2019)  
Refmac : 5.8.0158  
CCP4 : 7.0.044 (Gargrove)  
Ideal geometry (proteins) : Engh & Huber (2001)  
Ideal geometry (DNA, RNA) : Parkinson et al. (1996)  
Validation Pipeline (wwPDB-VP) : 2.23.2

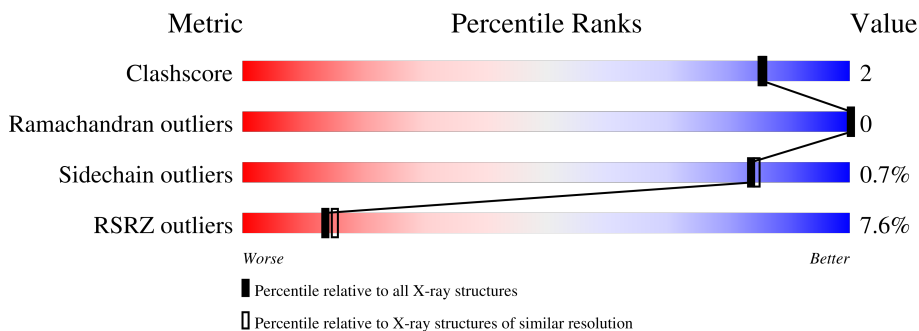
# 1 Overall quality at a glance

The following experimental techniques were used to determine the structure:

*X-RAY DIFFRACTION*

The reported resolution of this entry is 1.90 Å.

Percentile scores (ranging between 0-100) for global validation metrics of the entry are shown in the following graphic. The table shows the number of entries on which the scores are based.



Metric	Whole archive (#Entries)	Similar resolution (#Entries, resolution range(Å))
Clashscore	141614	6847 (1.90-1.90)
Ramachandran outliers	138981	6760 (1.90-1.90)
Sidechain outliers	138945	6760 (1.90-1.90)
RSRZ outliers	127900	6082 (1.90-1.90)

The table below summarises the geometric issues observed across the polymeric chains and their fit to the electron density. The red, orange, yellow and green segments of the lower bar indicate the fraction of residues that contain outliers for  $\geq 3$ , 2, 1 and 0 types of geometric quality criteria respectively. A grey segment represents the fraction of residues that are not modelled. The numeric value for each fraction is indicated below the corresponding segment, with a dot representing fractions  $\leq 5\%$ . The upper red bar (where present) indicates the fraction of residues that have poor fit to the electron density. The numeric value is given above the bar.

Mol	Chain	Length	Quality of chain
1	A	347	 3% 93% 6%
1	B	347	 11% 94%

## 2 Entry composition

There are 6 unique types of molecules in this entry. The entry contains 6538 atoms, of which 0 are hydrogens and 0 are deuteriums.

In the tables below, the ZeroOcc column contains the number of atoms modelled with zero occupancy, the AltConf column contains the number of residues with at least one atom in alternate conformation and the Trace column contains the number of residues modelled with at most 2 atoms.

- Molecule 1 is a protein called Cytohesin-3.

Mol	Chain	Residues	Atoms						ZeroOcc	AltConf	Trace
			Total	C	N	O	S	Se			
1	A	343	2808	1780	497	517	6	8	0	0	0
1	B	341	2795	1771	495	515	6	8	0	0	0

There are 24 discrepancies between the modelled and reference sequences:

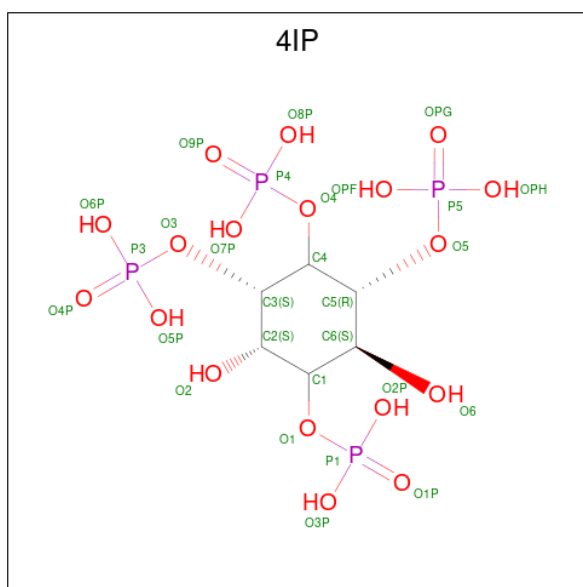
Chain	Residue	Modelled	Actual	Comment	Reference
A	53	MSE	-	expression tag	UNP O08967
A	54	GLY	-	expression tag	UNP O08967
A	55	HIS	-	expression tag	UNP O08967
A	56	HIS	-	expression tag	UNP O08967
A	57	HIS	-	expression tag	UNP O08967
A	58	HIS	-	expression tag	UNP O08967
A	59	HIS	-	expression tag	UNP O08967
A	60	HIS	-	expression tag	UNP O08967
A	61	GLY	-	expression tag	UNP O08967
A	62	SER	-	expression tag	UNP O08967
A	68	ALA	LYS	engineered mutation	UNP O08967
A	260	TYR	HIS	engineered mutation	UNP O08967
B	53	MSE	-	expression tag	UNP O08967
B	54	GLY	-	expression tag	UNP O08967
B	55	HIS	-	expression tag	UNP O08967
B	56	HIS	-	expression tag	UNP O08967
B	57	HIS	-	expression tag	UNP O08967
B	58	HIS	-	expression tag	UNP O08967
B	59	HIS	-	expression tag	UNP O08967
B	60	HIS	-	expression tag	UNP O08967
B	61	GLY	-	expression tag	UNP O08967
B	62	SER	-	expression tag	UNP O08967
B	68	ALA	LYS	engineered mutation	UNP O08967
B	260	TYR	HIS	engineered mutation	UNP O08967

- Molecule 2 is SULFATE ION (three-letter code: SO4) (formula: O<sub>4</sub>S).



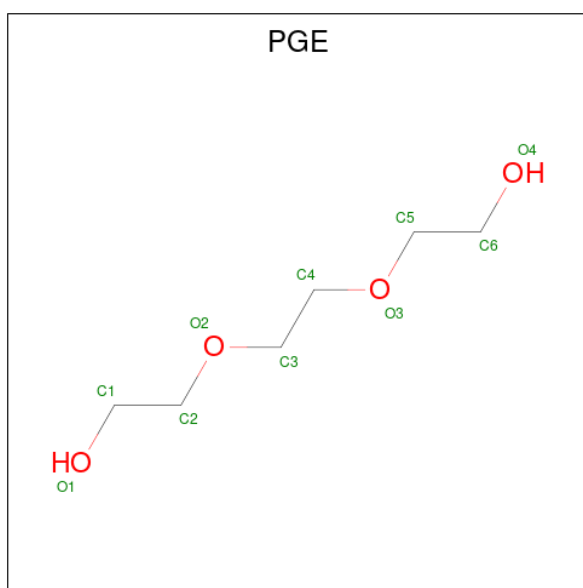
Mol	Chain	Residues	Atoms			ZeroOcc	AltConf
2	A	1	Total	O	S	0	0
			5	4	1		
2	A	1	Total	O	S	0	0
			5	4	1		
2	A	1	Total	O	S	0	0
			5	4	1		
2	A	1	Total	O	S	0	0
			5	4	1		
2	A	1	Total	O	S	0	0
			5	4	1		
2	B	1	Total	O	S	0	0
			5	4	1		

- Molecule 3 is INOSITOL-(1,3,4,5)-TETRAKISPHOSPHATE (three-letter code: 4IP) (formula: C<sub>6</sub>H<sub>16</sub>O<sub>18</sub>P<sub>4</sub>).



Mol	Chain	Residues	Atoms				ZeroOcc	AltConf
			Total	C	O	P		
3	A	1	Total	C	O	P	0	0
			28	6	18	4		
3	B	1	Total	C	O	P	0	0
			28	6	18	4		

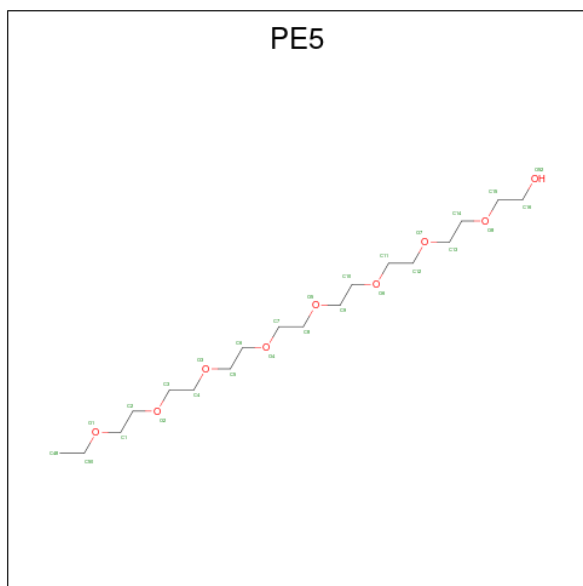
- Molecule 4 is TRIETHYLENE GLYCOL (three-letter code: PGE) (formula:  $C_6H_{14}O_4$ ).



Mol	Chain	Residues	Atoms			ZeroOcc	AltConf
			Total	C	O		
4	A	1	Total	C	O	0	0
			10	6	4		

- Molecule 5 is 3,6,9,12,15,18,21,24-OCTAOXAHEXACOSAN-1-OL (three-letter code: PE5)

(formula: C<sub>18</sub>H<sub>38</sub>O<sub>9</sub>).



Mol	Chain	Residues	Atoms		ZeroOcc	AltConf	
5	A	1	Total	C	O	0	0
			27	18	9		

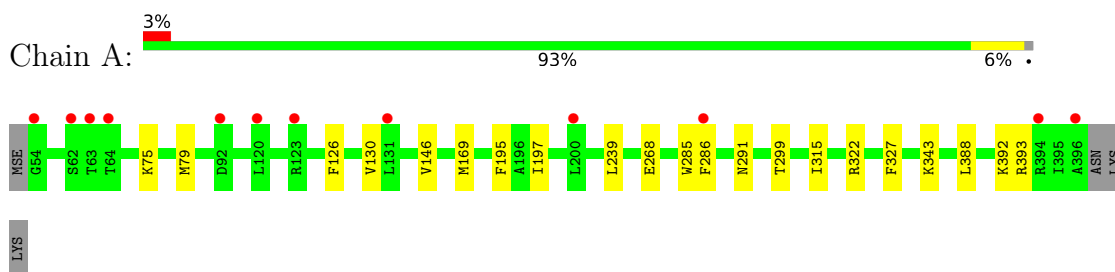
- Molecule 6 is water.

Mol	Chain	Residues	Atoms		ZeroOcc	AltConf
6	A	515	Total	O	0	0
			515	515		
6	B	292	Total	O	0	0
			292	292		

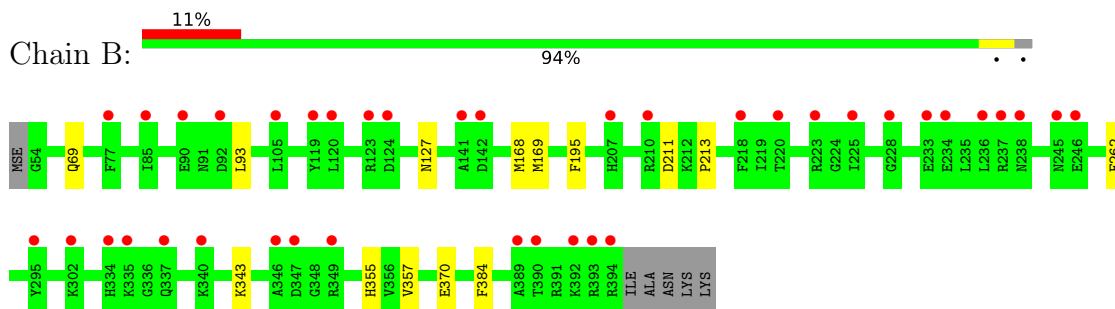
### 3 Residue-property plots [i](#)

These plots are drawn for all protein, RNA, DNA and oligosaccharide chains in the entry. The first graphic for a chain summarises the proportions of the various outlier classes displayed in the second graphic. The second graphic shows the sequence view annotated by issues in geometry and electron density. Residues are color-coded according to the number of geometric quality criteria for which they contain at least one outlier: green = 0, yellow = 1, orange = 2 and red = 3 or more. A red dot above a residue indicates a poor fit to the electron density ( $RSRZ > 2$ ). Stretches of 2 or more consecutive residues without any outlier are shown as a green connector. Residues present in the sample, but not in the model, are shown in grey.

- Molecule 1: Cytohesin-3



- Molecule 1: Cytohesin-3



## 4 Data and refinement statistics

Property	Value	Source
Space group	P 21 21 21	Depositor
Cell constants a, b, c, $\alpha$ , $\beta$ , $\gamma$	83.60Å 94.61Å 115.31Å 90.00° 90.00° 90.00°	Depositor
Resolution (Å)	20.00 – 1.90 19.63 – 1.90	Depositor EDS
% Data completeness (in resolution range)	99.7 (20.00-1.90) 99.7 (19.63-1.90)	Depositor EDS
$R_{merge}$	(Not available)	Depositor
$R_{sym}$	(Not available)	Depositor
$\langle I/\sigma(I) \rangle$ <sup>1</sup>	3.43 (at 1.90Å)	Xtrriage
Refinement program	REFMAC 5.2.0005	Depositor
R, $R_{free}$	0.204 , 0.241 0.209 , (Not available)	Depositor DCC
$R_{free}$ test set	No test flags present.	wwPDB-VP
Wilson B-factor (Å <sup>2</sup> )	29.0	Xtrriage
Anisotropy	0.469	Xtrriage
Bulk solvent $k_{sol}$ (e/Å <sup>3</sup> ), $B_{sol}$ (Å <sup>2</sup> )	0.38 , 53.0	EDS
L-test for twinning <sup>2</sup>	$\langle  L  \rangle = 0.49$ , $\langle L^2 \rangle = 0.32$	Xtrriage
Estimated twinning fraction	No twinning to report.	Xtrriage
$F_o, F_c$ correlation	0.95	EDS
Total number of atoms	6538	wwPDB-VP
Average B, all atoms (Å <sup>2</sup> )	33.0	wwPDB-VP

Xtrriage's analysis on translational NCS is as follows: *The largest off-origin peak in the Patterson function is 4.83% of the height of the origin peak. No significant pseudotranslation is detected.*

<sup>1</sup>Intensities estimated from amplitudes.

<sup>2</sup>Theoretical values of  $\langle |L| \rangle$ ,  $\langle L^2 \rangle$  for acentric reflections are 0.5, 0.333 respectively for untwinned datasets, and 0.375, 0.2 for perfectly twinned datasets.



## 5 Model quality

### 5.1 Standard geometry

Bond lengths and bond angles in the following residue types are not validated in this section: PE5, PGE, 4IP, SO4

The Z score for a bond length (or angle) is the number of standard deviations the observed value is removed from the expected value. A bond length (or angle) with  $|Z| > 5$  is considered an outlier worth inspection. RMSZ is the root-mean-square of all Z scores of the bond lengths (or angles).

Mol	Chain	Bond lengths		Bond angles	
		RMSZ	# Z  >5	RMSZ	# Z  >5
1	A	0.45	0/2868	0.53	0/3858
1	B	0.40	0/2855	0.50	0/3840
All	All	0.42	0/5723	0.51	0/7698

There are no bond length outliers.

There are no bond angle outliers.

There are no chirality outliers.

There are no planarity outliers.

### 5.2 Too-close contacts

In the following table, the Non-H and H(model) columns list the number of non-hydrogen atoms and hydrogen atoms in the chain respectively. The H(added) column lists the number of hydrogen atoms added and optimized by MolProbity. The Clashes column lists the number of clashes within the asymmetric unit, whereas Symm-Clashes lists symmetry-related clashes.

Mol	Chain	Non-H	H(model)	H(added)	Clashes	Symm-Clashes
1	A	2808	0	2750	14	0
1	B	2795	0	2734	11	0
2	A	30	0	0	0	0
2	B	5	0	0	0	0
3	A	28	0	8	0	0
3	B	28	0	8	2	0
4	A	10	0	14	0	0
5	A	27	0	38	6	0
6	A	515	0	0	0	0
6	B	292	0	0	1	0
All	All	6538	0	5552	25	0

The all-atom clashscore is defined as the number of clashes found per 1000 atoms (including hydrogen atoms). The all-atom clashscore for this structure is 2.

All (25) close contacts within the same asymmetric unit are listed below, sorted by their clash magnitude.

Atom-1	Atom-2	Interatomic distance (Å)	Clash overlap (Å)
1:B:262:PHE:CE1	1:B:384:PHE:HE2	2.02	0.78
1:B:355:HIS:HE1	3:B:400:4IP:O7P	1.84	0.59
1:A:392:LYS:HZ1	5:A:407:PE5:H81	1.68	0.58
1:B:127:ASN:HD22	1:B:127:ASN:H	1.54	0.54
1:A:392:LYS:NZ	5:A:407:PE5:H62	2.23	0.53
1:B:370:GLU:HG2	6:B:505:HOH:O	2.09	0.51
1:B:169:MSE:HG3	1:B:195:PHE:CZ	2.47	0.50
1:A:315:ILE:HD11	1:A:327:PHE:CD1	2.46	0.50
1:B:211:ASP:O	1:B:213:PRO:HD3	2.13	0.49
1:A:146:VAL:HG23	1:A:239:LEU:HD22	1.96	0.48
1:A:392:LYS:HE3	5:A:407:PE5:H81	1.96	0.48
1:A:388:LEU:HD13	5:A:407:PE5:H82	1.96	0.47
1:A:393:ARG:HG3	5:A:407:PE5:H141	1.97	0.46
1:B:262:PHE:CE1	1:B:384:PHE:CE2	2.93	0.46
1:A:75:LYS:HG2	1:A:79:MSE:HE2	1.98	0.46
1:A:197:ILE:HD11	1:A:239:LEU:HD13	1.99	0.44
1:B:355:HIS:CE1	3:B:400:4IP:O7P	2.69	0.42
1:A:285:TRP:CD2	1:A:299:THR:HG22	2.54	0.42
1:B:69:GLN:HB3	1:B:93:LEU:HD11	2.00	0.42
1:A:126:PHE:O	1:A:130:VAL:HG23	2.20	0.41
1:A:268:GLU:HA	1:A:286:PHE:O	2.20	0.41
1:B:168:MSE:HE2	1:B:168:MSE:HB3	2.00	0.41
1:A:392:LYS:HZ3	5:A:407:PE5:H32	1.86	0.40
1:A:169:MSE:HG3	1:A:195:PHE:CZ	2.55	0.40
1:B:355:HIS:HD2	1:B:357:VAL:O	2.04	0.40

There are no symmetry-related clashes.

## 5.3 Torsion angles [\(i\)](#)

### 5.3.1 Protein backbone [\(i\)](#)

In the following table, the Percentiles column shows the percent Ramachandran outliers of the chain as a percentile score with respect to all X-ray entries followed by that with respect to entries of similar resolution.

The Analysed column shows the number of residues for which the backbone conformation was

analysed, and the total number of residues.

Mol	Chain	Analysed	Favoured	Allowed	Outliers	Percentiles	
1	A	341/347 (98%)	338 (99%)	3 (1%)	0	100	100
1	B	339/347 (98%)	336 (99%)	3 (1%)	0	100	100
All	All	680/694 (98%)	674 (99%)	6 (1%)	0	100	100

There are no Ramachandran outliers to report.

### 5.3.2 Protein sidechains [i](#)

In the following table, the Percentiles column shows the percent sidechain outliers of the chain as a percentile score with respect to all X-ray entries followed by that with respect to entries of similar resolution.

The Analysed column shows the number of residues for which the sidechain conformation was analysed, and the total number of residues.

Mol	Chain	Analysed	Rotameric	Outliers	Percentiles	
1	A	305/300 (102%)	302 (99%)	3 (1%)	76	76
1	B	304/300 (101%)	303 (100%)	1 (0%)	92	93
All	All	609/600 (102%)	605 (99%)	4 (1%)	84	84

All (4) residues with a non-rotameric sidechain are listed below:

Mol	Chain	Res	Type
1	A	291	ASN
1	A	322	ARG
1	A	343	LYS
1	B	343	LYS

Sometimes sidechains can be flipped to improve hydrogen bonding and reduce clashes. All (4) such sidechains are listed below:

Mol	Chain	Res	Type
1	A	59	HIS
1	A	291	ASN
1	B	127	ASN
1	B	355	HIS

### 5.3.3 RNA [i](#)

There are no RNA molecules in this entry.

## 5.4 Non-standard residues in protein, DNA, RNA chains [i](#)

There are no non-standard protein/DNA/RNA residues in this entry.

## 5.5 Carbohydrates [i](#)

There are no monosaccharides in this entry.

## 5.6 Ligand geometry [i](#)

11 ligands are modelled in this entry.

In the following table, the Counts columns list the number of bonds (or angles) for which Mogul statistics could be retrieved, the number of bonds (or angles) that are observed in the model and the number of bonds (or angles) that are defined in the Chemical Component Dictionary. The Link column lists molecule types, if any, to which the group is linked. The Z score for a bond length (or angle) is the number of standard deviations the observed value is removed from the expected value. A bond length (or angle) with  $|Z| > 2$  is considered an outlier worth inspection. RMSZ is the root-mean-square of all Z scores of the bond lengths (or angles).

Mol	Type	Chain	Res	Link	Bond lengths			Bond angles		
					Counts	RMSZ	$\# Z  > 2$	Counts	RMSZ	$\# Z  > 2$
5	PE5	A	407	-	26,26,26	0.50	0	25,25,25	0.22	0
3	4IP	A	405	-	28,28,28	0.78	0	42,46,46	1.02	1 (2%)
4	PGE	A	406	-	9,9,9	0.46	0	8,8,8	0.22	0
2	SO4	A	404	-	4,4,4	0.17	0	6,6,6	0.10	0
2	SO4	A	400	-	4,4,4	0.30	0	6,6,6	0.31	0
3	4IP	B	400	-	28,28,28	0.75	0	42,46,46	1.05	3 (7%)
2	SO4	A	403	-	4,4,4	0.12	0	6,6,6	0.13	0
2	SO4	A	402	-	4,4,4	0.13	0	6,6,6	0.15	0
2	SO4	A	1	-	4,4,4	0.16	0	6,6,6	0.09	0
2	SO4	B	1	-	4,4,4	0.14	0	6,6,6	0.08	0
2	SO4	A	401	-	4,4,4	0.10	0	6,6,6	0.10	0

In the following table, the Chirals column lists the number of chiral outliers, the number of chiral centers analysed, the number of these observed in the model and the number defined in the Chemical Component Dictionary. Similar counts are reported in the Torsion and Rings columns. '-' means no outliers of that kind were identified.

Mol	Type	Chain	Res	Link	Chirals	Torsions	Rings
5	PE5	A	407	-	-	12/24/24/24	-
4	PGE	A	406	-	-	5/7/7/7	-
3	4IP	A	405	-	-	3/20/44/44	0/1/1/1
3	4IP	B	400	-	-	4/20/44/44	0/1/1/1

There are no bond length outliers.

All (4) bond angle outliers are listed below:

Mol	Chain	Res	Type	Atoms	Z	Observed(°)	Ideal(°)
3	A	405	4IP	O1-P1-O1P	-2.48	99.82	109.39
3	B	400	4IP	O8P-P4-O7P	2.32	116.50	107.64
3	B	400	4IP	O6P-P3-O5P	2.27	116.32	107.64
3	B	400	4IP	O1-P1-O1P	-2.16	101.06	109.39

There are no chirality outliers.

All (24) torsion outliers are listed below:

Mol	Chain	Res	Type	Atoms
3	A	405	4IP	C1-O1-P1-O3P
3	B	400	4IP	C1-O1-P1-O1P
5	A	407	PE5	O6-C10-C9-O5
5	A	407	PE5	O1-C1-C2-O2
4	A	406	PGE	O1-C1-C2-O2
4	A	406	PGE	O3-C5-C6-O4
5	A	407	PE5	O3-C5-C6-O4
5	A	407	PE5	O2-C3-C4-O3
5	A	407	PE5	O4-C7-C8-O5
3	A	405	4IP	C1-O1-P1-O1P
5	A	407	PE5	C14-C13-O7-C12
5	A	407	PE5	C16-C15-O8-C14
4	A	406	PGE	C1-C2-O2-C3
5	A	407	PE5	C6-C5-O3-C4
4	A	406	PGE	C4-C3-O2-C2
4	A	406	PGE	C6-C5-O3-C4
3	A	405	4IP	C5-O5-P5-OPH
3	B	400	4IP	C1-O1-P1-O2P
3	B	400	4IP	C5-O5-P5-OPH
5	A	407	PE5	O7-C13-C14-O8
5	A	407	PE5	C1-C2-O2-C3
5	A	407	PE5	C3-C4-O3-C5
5	A	407	PE5	C11-C12-O7-C13

*Continued on next page...*

*Continued from previous page...*

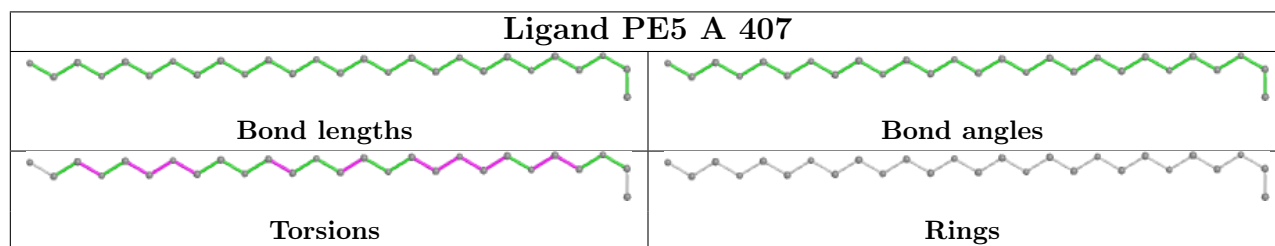
Mol	Chain	Res	Type	Atoms
3	B	400	4IP	C6-C5-O5-P5

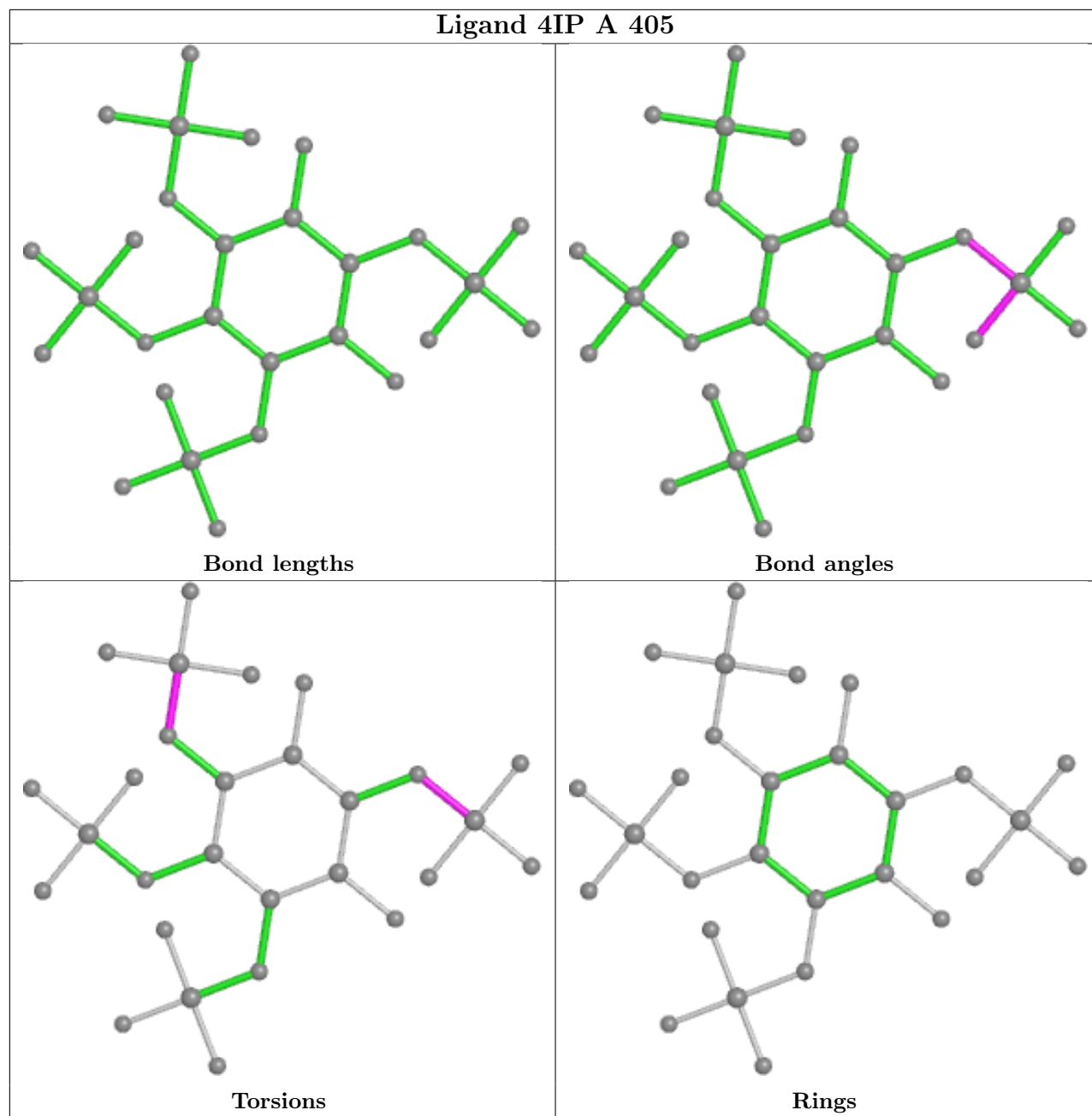
There are no ring outliers.

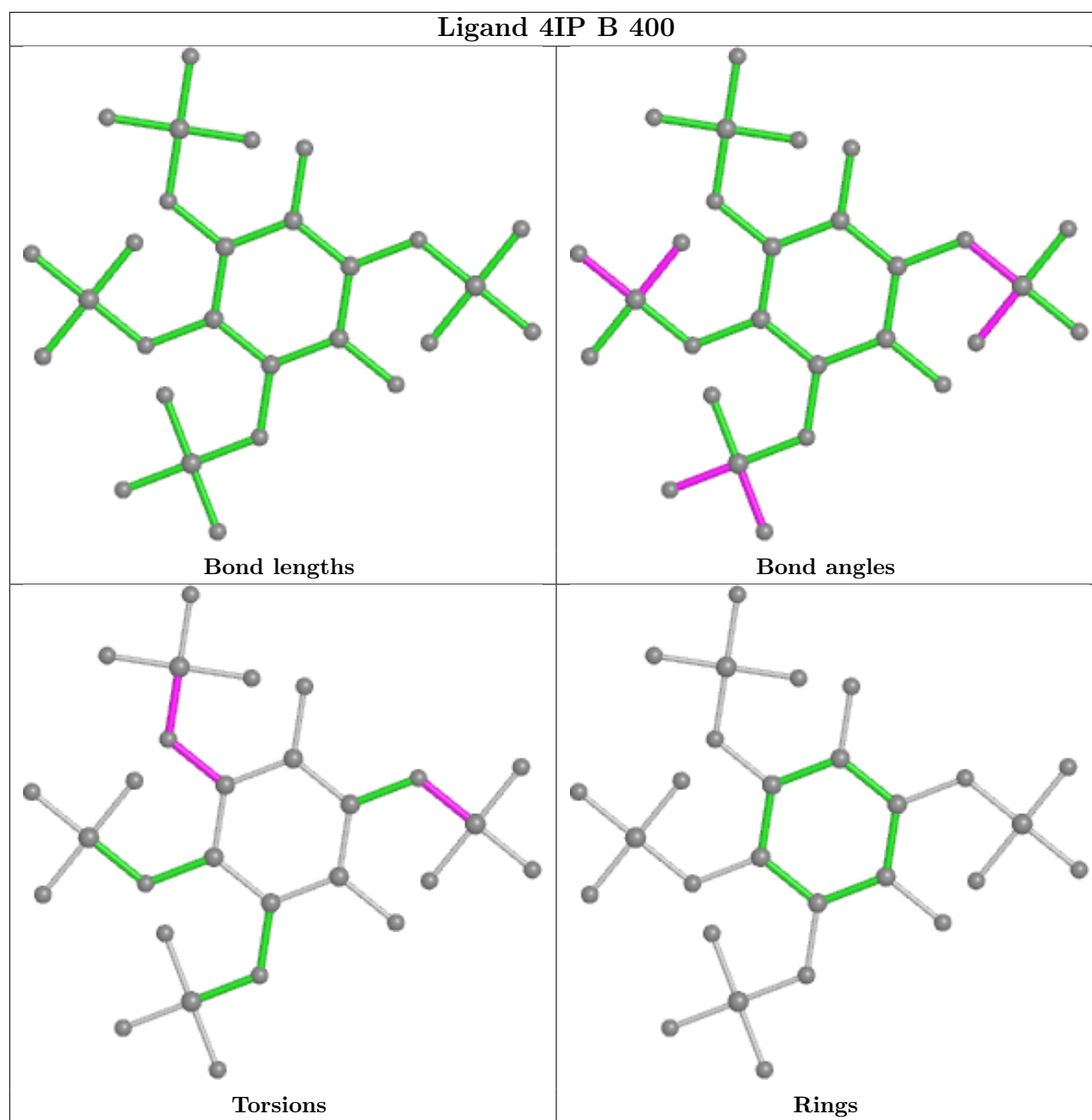
2 monomers are involved in 8 short contacts:

Mol	Chain	Res	Type	Clashes	Symm-Clashes
5	A	407	PE5	6	0
3	B	400	4IP	2	0

The following is a two-dimensional graphical depiction of Mogul quality analysis of bond lengths, bond angles, torsion angles, and ring geometry for all instances of the Ligand of Interest. In addition, ligands with molecular weight > 250 and outliers as shown on the validation Tables will also be included. For torsion angles, if less than 5% of the Mogul distribution of torsion angles is within 10 degrees of the torsion angle in question, then that torsion angle is considered an outlier. Any bond that is central to one or more torsion angles identified as an outlier by Mogul will be highlighted in the graph. For rings, the root-mean-square deviation (RMSD) between the ring in question and similar rings identified by Mogul is calculated over all ring torsion angles. If the average RMSD is greater than 60 degrees and the minimal RMSD between the ring in question and any Mogul-identified rings is also greater than 60 degrees, then that ring is considered an outlier. The outliers are highlighted in purple. The color gray indicates Mogul did not find sufficient equivalents in the CSD to analyse the geometry.







## 5.7 Other polymers [i](#)

There are no such residues in this entry.

## 5.8 Polymer linkage issues [i](#)

There are no chain breaks in this entry.



## 6 Fit of model and data

### 6.1 Protein, DNA and RNA chains

In the following table, the column labelled ‘#RSRZ > 2’ contains the number (and percentage) of RSRZ outliers, followed by percent RSRZ outliers for the chain as percentile scores relative to all X-ray entries and entries of similar resolution. The OWAB column contains the minimum, median, 95<sup>th</sup> percentile and maximum values of the occupancy-weighted average B-factor per residue. The column labelled ‘Q < 0.9’ lists the number of (and percentage) of residues with an average occupancy less than 0.9.

Mol	Chain	Analysed	<RSRZ>	#RSRZ>2	OWAB(Å <sup>2</sup> )	Q<0.9
1	A	335/347 (96%)	0.32	12 (3%) 42 45	18, 26, 39, 48	0
1	B	333/347 (95%)	0.72	39 (11%) 4 5	20, 36, 53, 70	0
All	All	668/694 (96%)	0.52	51 (7%) 13 15	18, 30, 51, 70	0

All (51) RSRZ outliers are listed below:

Mol	Chain	Res	Type	RSRZ
1	B	346	ALA	4.5
1	B	394	ARG	4.4
1	B	334	HIS	4.3
1	B	223	ARG	4.3
1	A	54	GLY	4.2
1	A	123	ARG	3.9
1	B	218	PHE	3.8
1	B	220	THR	3.6
1	B	347	ASP	3.5
1	B	210	ARG	3.2
1	B	123	ARG	3.2
1	B	245	ASN	3.1
1	A	396	ALA	3.1
1	B	234	GLU	3.0
1	B	236	LEU	2.9
1	B	337	GLN	2.9
1	A	62	SER	2.9
1	B	92	ASP	2.8
1	A	63	THR	2.8
1	B	105	LEU	2.8
1	B	393	ARG	2.7
1	B	302	LYS	2.6
1	B	389	ALA	2.5
1	B	237	ARG	2.5

*Continued on next page...*

*Continued from previous page...*

Mol	Chain	Res	Type	RSRZ
1	B	207	HIS	2.5
1	B	335	LYS	2.5
1	A	64	THR	2.5
1	A	120	LEU	2.4
1	B	238	ASN	2.4
1	A	286	PHE	2.4
1	B	349	ARG	2.4
1	B	392	LYS	2.4
1	B	295	TYR	2.3
1	B	77	PHE	2.3
1	B	233	GLU	2.3
1	B	228	GLY	2.2
1	B	85	ILE	2.2
1	A	200	LEU	2.2
1	A	92	ASP	2.2
1	B	124	ASP	2.2
1	A	131	LEU	2.1
1	B	90	GLU	2.1
1	B	120	LEU	2.1
1	B	141	ALA	2.1
1	B	142	ASP	2.1
1	A	394	ARG	2.0
1	B	119	TYR	2.0
1	B	225	ILE	2.0
1	B	390	THR	2.0
1	B	340	LYS	2.0
1	B	246	GLU	2.0

## 6.2 Non-standard residues in protein, DNA, RNA chains [i](#)

There are no non-standard protein/DNA/RNA residues in this entry.

## 6.3 Carbohydrates [i](#)

There are no monosaccharides in this entry.

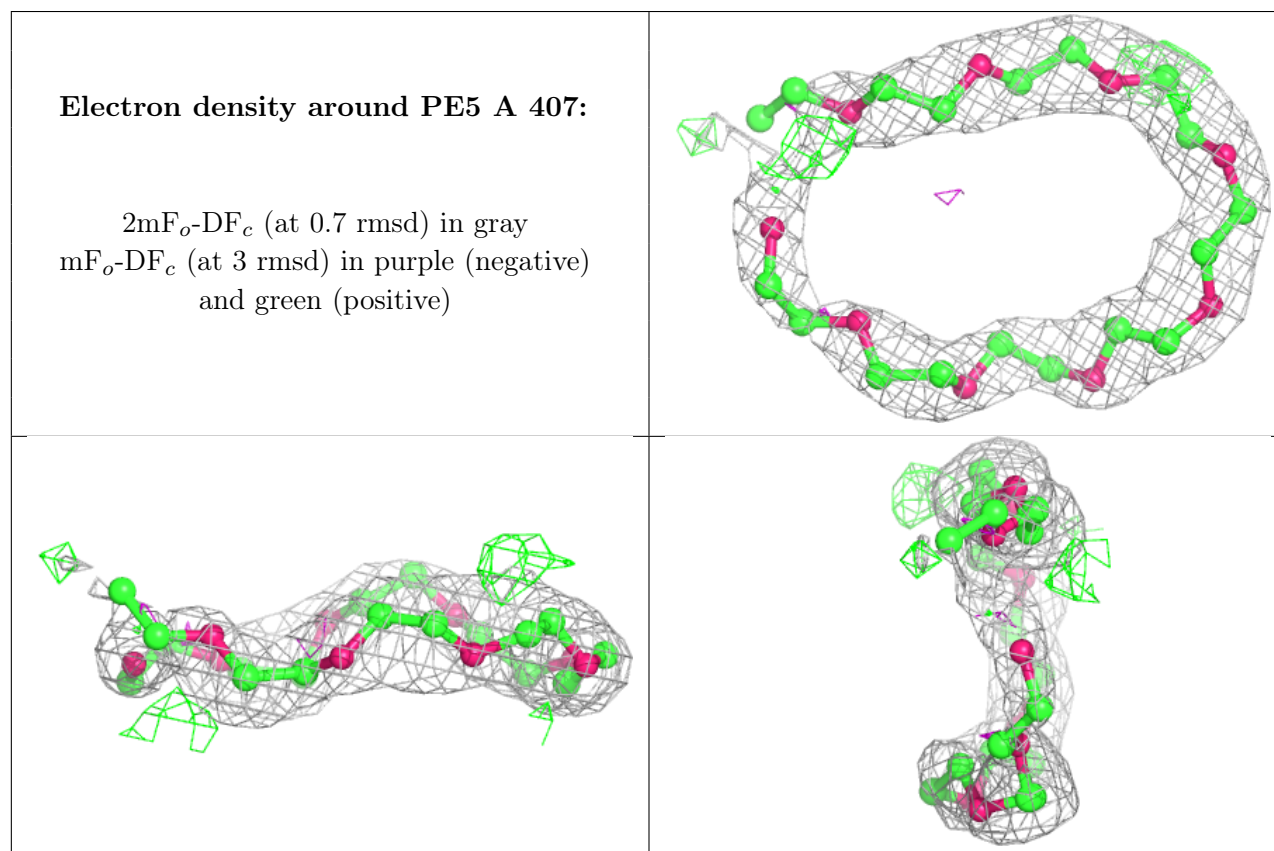
## 6.4 Ligands [i](#)

In the following table, the Atoms column lists the number of modelled atoms in the group and the number defined in the chemical component dictionary. The B-factors column lists the minimum,

median, 95<sup>th</sup> percentile and maximum values of B factors of atoms in the group. The column labelled 'Q< 0.9' lists the number of atoms with occupancy less than 0.9.

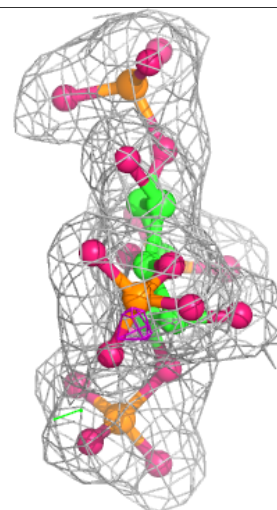
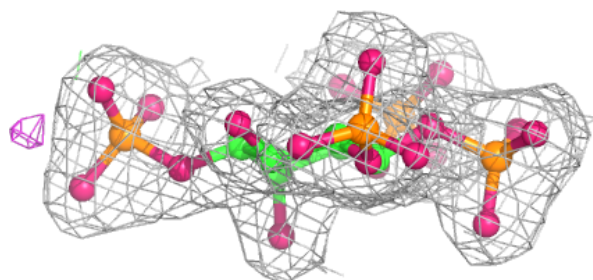
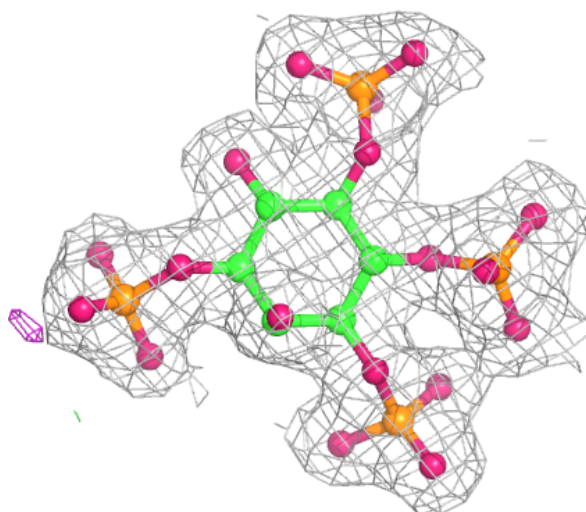
Mol	Type	Chain	Res	Atoms	RSCC	RSR	B-factors(Å <sup>2</sup> )	Q<0.9
4	PGE	A	406	10/10	0.60	0.29	54,55,56,56	0
5	PE5	A	407	27/27	0.80	0.22	40,47,53,54	0
2	SO4	B	1	5/5	0.82	0.28	87,87,87,88	0
2	SO4	A	404	5/5	0.92	0.24	53,54,54,55	0
2	SO4	A	400	5/5	0.95	0.12	28,28,33,34	0
2	SO4	A	402	5/5	0.95	0.15	43,45,45,46	0
2	SO4	A	403	5/5	0.96	0.12	54,55,56,56	0
3	4IP	B	400	28/28	0.98	0.07	22,25,30,32	0
2	SO4	A	401	5/5	0.98	0.14	36,38,39,39	0
3	4IP	A	405	28/28	0.98	0.08	19,20,24,26	0
2	SO4	A	1	5/5	0.99	0.11	33,35,37,39	0

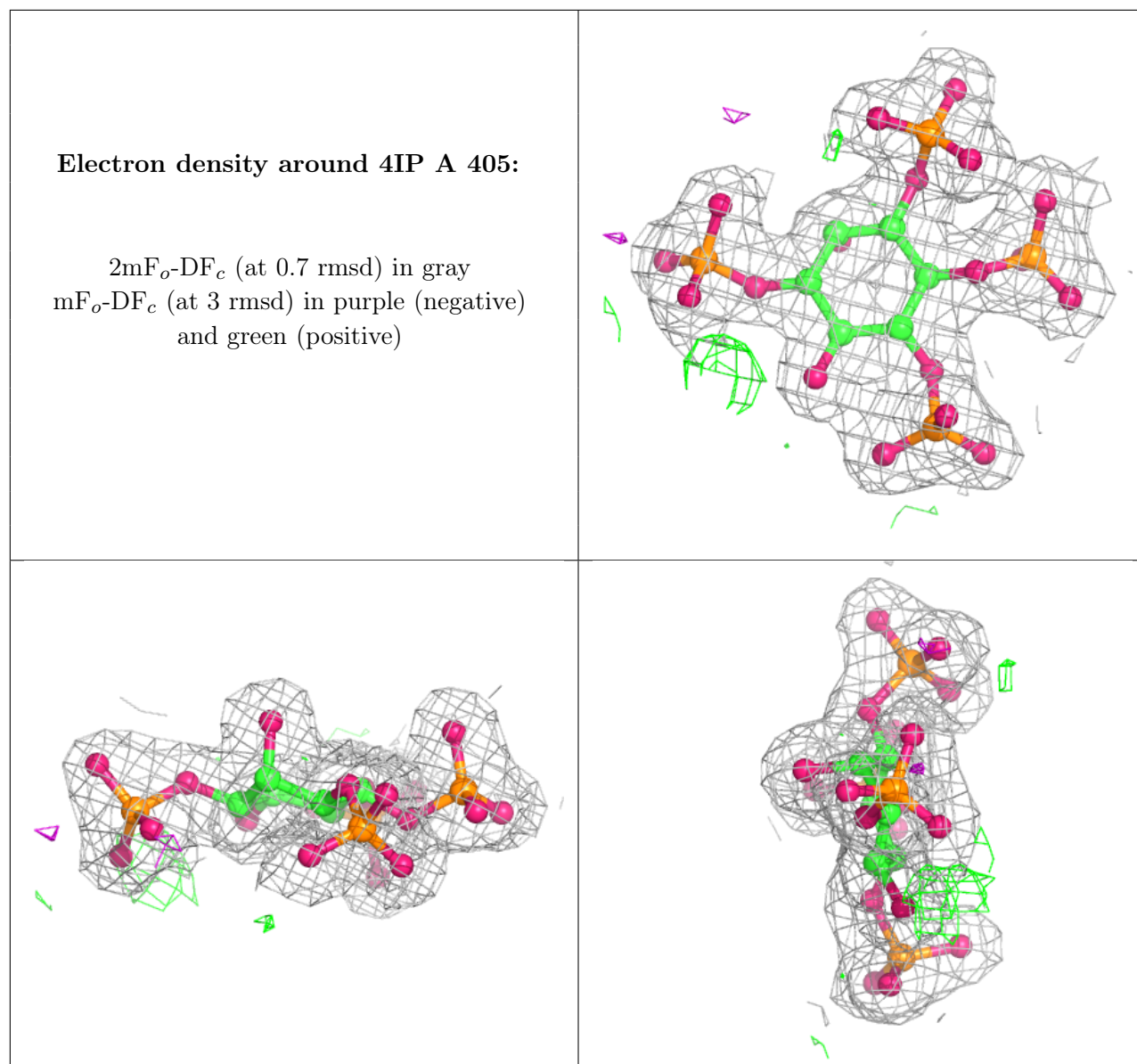
The following is a graphical depiction of the model fit to experimental electron density of all instances of the Ligand of Interest. In addition, ligands with molecular weight > 250 and outliers as shown on the geometry validation Tables will also be included. Each fit is shown from different orientation to approximate a three-dimensional view.



**Electron density around 4IP B 400:**

$2mF_o-DF_c$  (at 0.7 rmsd) in gray  
 $mF_o-DF_c$  (at 3 rmsd) in purple (negative)  
and green (positive)





## 6.5 Other polymers [\(i\)](#)

There are no such residues in this entry.