



wwPDB X-ray Structure Validation Summary Report ⓘ

Dec 17, 2023 – 11:28 pm GMT

PDB ID : 2YKU
Title : Structural Determinants of the Beta-Selectivity of a Bacterial Aminotransferase
Authors : Wybenga, G.G.; Crismaru, C.G.; Janssen, D.B.; Dijkstra, B.W.
Deposited on : 2011-05-30
Resolution : 1.90 Å(reported)

This is a wwPDB X-ray Structure Validation Summary Report for a publicly released PDB entry.

We welcome your comments at validation@mail.wwpdb.org

A user guide is available at

<https://www.wwpdb.org/validation/2017/XrayValidationReportHelp>

with specific help available everywhere you see the ⓘ symbol.

The types of validation reports are described at

<http://www.wwpdb.org/validation/2017/FAQs#types>.

The following versions of software and data (see [references ⓘ](#)) were used in the production of this report:

MolProbity : 4.02b-467
Mogul : 1.8.4, CSD as541be (2020)
Xtriage (Phenix) : 1.13
EDS : 2.36
Percentile statistics : 20191225.v01 (using entries in the PDB archive December 25th 2019)
Refmac : 5.8.0158
CCP4 : 7.0.044 (Gargrove)
Ideal geometry (proteins) : Engh & Huber (2001)
Ideal geometry (DNA, RNA) : Parkinson et al. (1996)
Validation Pipeline (wwPDB-VP) : 2.36

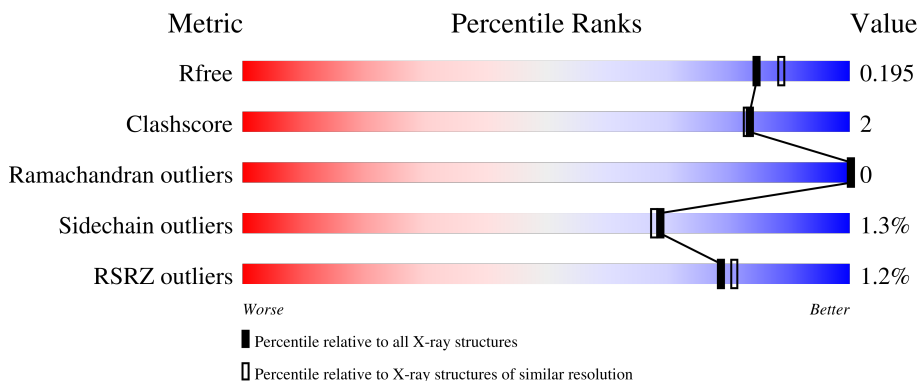
1 Overall quality at a glance

The following experimental techniques were used to determine the structure:

X-RAY DIFFRACTION

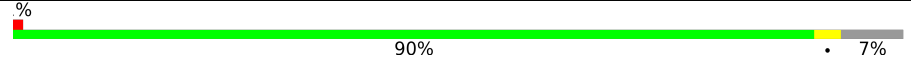


The reported resolution of this entry is 1.90 Å.

Percentile scores (ranging between 0-100) for global validation metrics of the entry are shown in the following graphic. The table shows the number of entries on which the scores are based.



Metric	Whole archive (#Entries)	Similar resolution (#Entries, resolution range(Å))
R_{free}	130704	6207 (1.90-1.90)
Clashscore	141614	6847 (1.90-1.90)
Ramachandran outliers	138981	6760 (1.90-1.90)
Sidechain outliers	138945	6760 (1.90-1.90)
RSRZ outliers	127900	6082 (1.90-1.90)

The table below summarises the geometric issues observed across the polymeric chains and their fit to the electron density. The red, orange, yellow and green segments of the lower bar indicate the fraction of residues that contain outliers for ≥ 3 , 2, 1 and 0 types of geometric quality criteria respectively. A grey segment represents the fraction of residues that are not modelled. The numeric value for each fraction is indicated below the corresponding segment, with a dot representing fractions $\leq 5\%$. The upper red bar (where present) indicates the fraction of residues that have poor fit to the electron density. The numeric value is given above the bar.

Mol	Chain	Length	Quality of chain
1	A	465	 90% 7%
1	B	465	 87% 5% 8%
1	C	465	 89% 7%

The following table lists non-polymeric compounds, carbohydrate monomers and non-standard residues in protein, DNA, RNA chains that are outliers for geometric or electron-density-fit criteria:

Mol	Type	Chain	Res	Chirality	Geometry	Clashes	Electron density
4	EDO	B	1445	-	-	X	-

2 Entry composition

There are 5 unique types of molecules in this entry. The entry contains 11172 atoms, of which 0 are hydrogens and 0 are deuteriums.

In the tables below, the ZeroOcc column contains the number of atoms modelled with zero occupancy, the AltConf column contains the number of residues with at least one atom in alternate conformation and the Trace column contains the number of residues modelled with at most 2 atoms.

- Molecule 1 is a protein called BETA-TRANSAMINASE.

Mol	Chain	Residues	Atoms					ZeroOcc	AltConf	Trace
			Total	C	N	O	S			
1	A	433	Total 3296	C 2056	N 606	O 617	S 17	0	8	0
1	B	430	Total 3266	C 2038	N 601	O 612	S 15	0	6	0
1	C	432	Total 3274	C 2043	N 602	O 613	S 16	0	6	0

There are 60 discrepancies between the modelled and reference sequences:

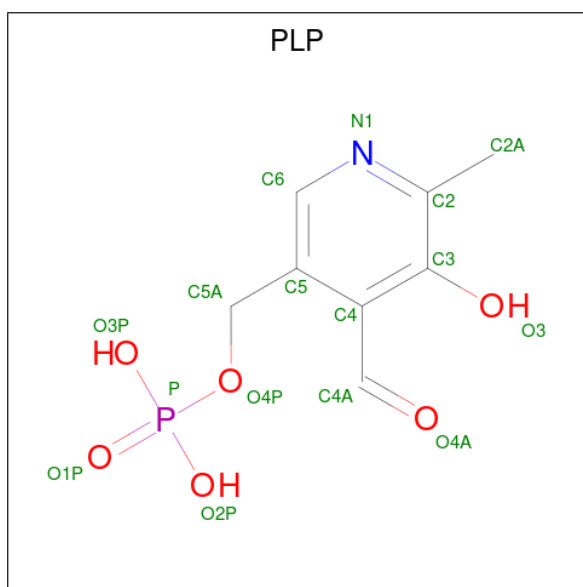
Chain	Residue	Modelled	Actual	Comment	Reference
A	-19	MET	-	expression tag	UNP A3EYF7
A	-18	GLY	-	expression tag	UNP A3EYF7
A	-17	SER	-	expression tag	UNP A3EYF7
A	-16	SER	-	expression tag	UNP A3EYF7
A	-15	HIS	-	expression tag	UNP A3EYF7
A	-14	HIS	-	expression tag	UNP A3EYF7
A	-13	HIS	-	expression tag	UNP A3EYF7
A	-12	HIS	-	expression tag	UNP A3EYF7
A	-11	HIS	-	expression tag	UNP A3EYF7
A	-10	HIS	-	expression tag	UNP A3EYF7
A	-9	SER	-	expression tag	UNP A3EYF7
A	-8	SER	-	expression tag	UNP A3EYF7
A	-7	GLY	-	expression tag	UNP A3EYF7
A	-6	LEU	-	expression tag	UNP A3EYF7
A	-5	VAL	-	expression tag	UNP A3EYF7
A	-4	PRO	-	expression tag	UNP A3EYF7
A	-3	ARG	-	expression tag	UNP A3EYF7
A	-2	GLY	-	expression tag	UNP A3EYF7
A	-1	SER	-	expression tag	UNP A3EYF7
A	0	HIS	-	expression tag	UNP A3EYF7
B	-19	MET	-	expression tag	UNP A3EYF7
B	-18	GLY	-	expression tag	UNP A3EYF7
B	-17	SER	-	expression tag	UNP A3EYF7

Continued on next page...

Continued from previous page...

Chain	Residue	Modelled	Actual	Comment	Reference
B	-16	SER	-	expression tag	UNP A3EYF7
B	-15	HIS	-	expression tag	UNP A3EYF7
B	-14	HIS	-	expression tag	UNP A3EYF7
B	-13	HIS	-	expression tag	UNP A3EYF7
B	-12	HIS	-	expression tag	UNP A3EYF7
B	-11	HIS	-	expression tag	UNP A3EYF7
B	-10	HIS	-	expression tag	UNP A3EYF7
B	-9	SER	-	expression tag	UNP A3EYF7
B	-8	SER	-	expression tag	UNP A3EYF7
B	-7	GLY	-	expression tag	UNP A3EYF7
B	-6	LEU	-	expression tag	UNP A3EYF7
B	-5	VAL	-	expression tag	UNP A3EYF7
B	-4	PRO	-	expression tag	UNP A3EYF7
B	-3	ARG	-	expression tag	UNP A3EYF7
B	-2	GLY	-	expression tag	UNP A3EYF7
B	-1	SER	-	expression tag	UNP A3EYF7
B	0	HIS	-	expression tag	UNP A3EYF7
C	-19	MET	-	expression tag	UNP A3EYF7
C	-18	GLY	-	expression tag	UNP A3EYF7
C	-17	SER	-	expression tag	UNP A3EYF7
C	-16	SER	-	expression tag	UNP A3EYF7
C	-15	HIS	-	expression tag	UNP A3EYF7
C	-14	HIS	-	expression tag	UNP A3EYF7
C	-13	HIS	-	expression tag	UNP A3EYF7
C	-12	HIS	-	expression tag	UNP A3EYF7
C	-11	HIS	-	expression tag	UNP A3EYF7
C	-10	HIS	-	expression tag	UNP A3EYF7
C	-9	SER	-	expression tag	UNP A3EYF7
C	-8	SER	-	expression tag	UNP A3EYF7
C	-7	GLY	-	expression tag	UNP A3EYF7
C	-6	LEU	-	expression tag	UNP A3EYF7
C	-5	VAL	-	expression tag	UNP A3EYF7
C	-4	PRO	-	expression tag	UNP A3EYF7
C	-3	ARG	-	expression tag	UNP A3EYF7
C	-2	GLY	-	expression tag	UNP A3EYF7
C	-1	SER	-	expression tag	UNP A3EYF7
C	0	HIS	-	expression tag	UNP A3EYF7

- Molecule 2 is PYRIDOXAL-5'-PHOSPHATE (three-letter code: PLP) (formula: C₈H₁₀NO₆P).



Mol	Chain	Residues	Atoms					ZeroOcc	AltConf
			Total	C	N	O	P		
2	A	1	Total	C	N	O	P	0	0
			15	8	1	5	1		
2	B	1	Total	C	N	O	P	0	0
			15	8	1	5	1		
2	C	1	Total	C	N	O	P	0	0
			15	8	1	5	1		

- Molecule 3 is GLYCEROL (three-letter code: GOL) (formula: C₃H₈O₃).



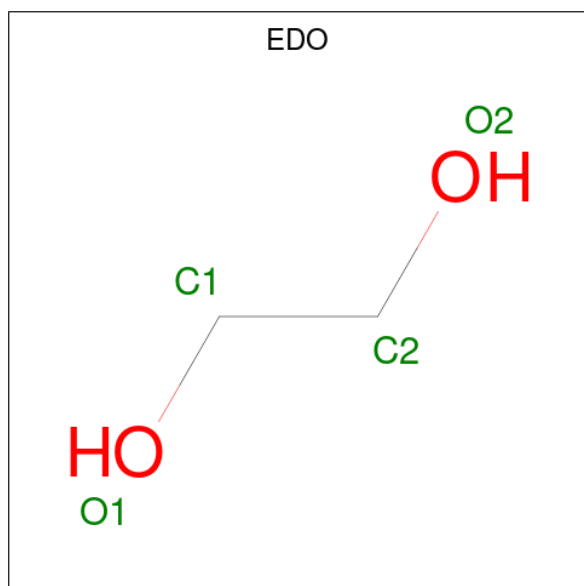
Mol	Chain	Residues	Atoms			ZeroOcc	AltConf
			Total	C	O		
3	A	1	Total	C	O	0	0
			6	3	3		

Continued on next page...

Continued from previous page...

Mol	Chain	Residues	Atoms			ZeroOcc	AltConf
3	A	1	Total	C	O	0	0
			6	3	3		

- Molecule 4 is 1,2-ETHANEDIOL (three-letter code: EDO) (formula: C₂H₆O₂).



Mol	Chain	Residues	Atoms			ZeroOcc	AltConf
4	A	1	Total	C	O	0	0
			4	2	2		
4	A	1	Total	C	O	0	0
			4	2	2		
4	A	1	Total	C	O	0	0
			4	2	2		
4	B	1	Total	C	O	0	0
			4	2	2		
4	B	1	Total	C	O	0	0
			4	2	2		
4	B	1	Total	C	O	0	0
			4	2	2		
4	B	1	Total	C	O	0	0
			4	2	2		
4	B	1	Total	C	O	0	0
			4	2	2		
4	C	1	Total	C	O	0	0
			4	2	2		

Continued on next page...

Continued from previous page...

Mol	Chain	Residues	Atoms	ZeroOcc	AltConf
4	C	1	Total C O 4 2 2	0	0
4	C	1	Total C O 4 2 2	0	0
4	C	1	Total C O 4 2 2	0	0

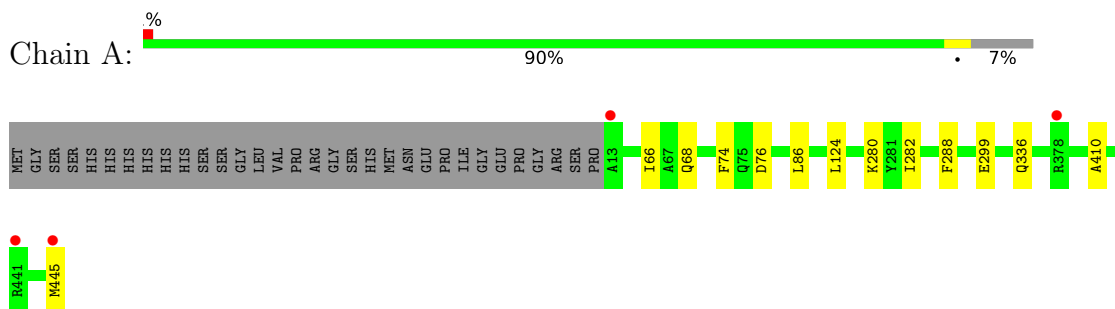
- Molecule 5 is water.

Mol	Chain	Residues	Atoms	ZeroOcc	AltConf
5	A	443	Total O 443 443	0	0
5	B	399	Total O 399 399	0	0
5	C	385	Total O 385 385	0	0

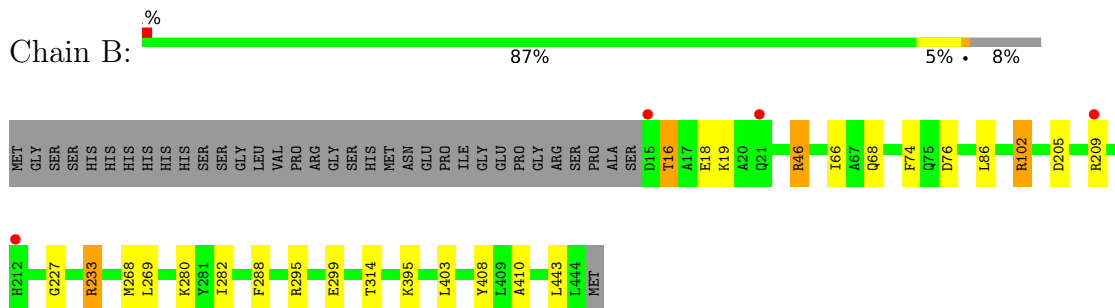
3 Residue-property plots [i](#)

These plots are drawn for all protein, RNA, DNA and oligosaccharide chains in the entry. The first graphic for a chain summarises the proportions of the various outlier classes displayed in the second graphic. The second graphic shows the sequence view annotated by issues in geometry and electron density. Residues are color-coded according to the number of geometric quality criteria for which they contain at least one outlier: green = 0, yellow = 1, orange = 2 and red = 3 or more. A red dot above a residue indicates a poor fit to the electron density ($RSRZ > 2$). Stretches of 2 or more consecutive residues without any outlier are shown as a green connector. Residues present in the sample, but not in the model, are shown in grey.

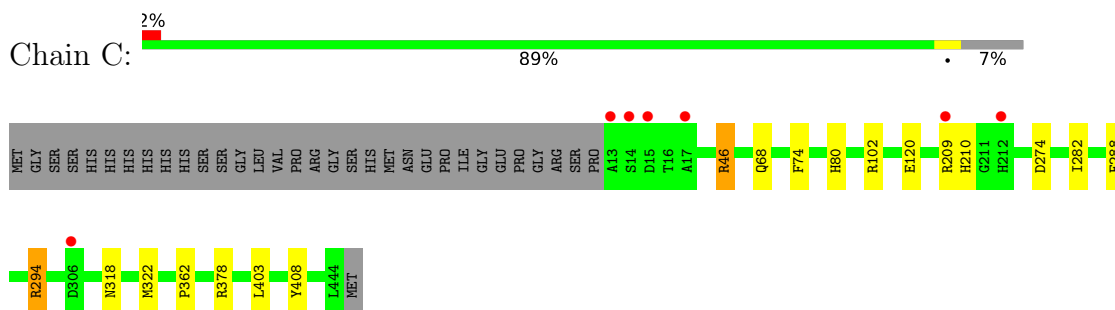
- Molecule 1: BETA-TRANSAMINASE



- Molecule 1: BETA-TRANSAMINASE



- Molecule 1: BETA-TRANSAMINASE



4 Data and refinement statistics

Property	Value	Source
Space group	C 1 2 1	Depositor
Cell constants a, b, c, α , β , γ	184.19Å 94.83Å 104.89Å 90.00° 113.72° 90.00°	Depositor
Resolution (Å)	96.03 – 1.90 48.02 – 1.90	Depositor EDS
% Data completeness (in resolution range)	99.8 (96.03-1.90) 99.8 (48.02-1.90)	Depositor EDS
R_{merge}	0.06	Depositor
R_{sym}	(Not available)	Depositor
$\langle I/\sigma(I) \rangle$ ¹	2.58 (at 1.90Å)	Xtrriage
Refinement program	REFMAC 5.5.0102	Depositor
R, R_{free}	0.162 , 0.191 0.166 , 0.195	Depositor DCC
R_{free} test set	6538 reflections (5.04%)	wwPDB-VP
Wilson B-factor (Å ²)	16.9	Xtrriage
Anisotropy	0.029	Xtrriage
Bulk solvent k_{sol} (e/Å ³), B_{sol} (Å ²)	0.35 , 45.9	EDS
L-test for twinning ²	$\langle L \rangle = 0.49$, $\langle L^2 \rangle = 0.32$	Xtrriage
Estimated twinning fraction	No twinning to report.	Xtrriage
F_o, F_c correlation	0.96	EDS
Total number of atoms	11172	wwPDB-VP
Average B, all atoms (Å ²)	20.0	wwPDB-VP

Xtrriage's analysis on translational NCS is as follows: *The largest off-origin peak in the Patterson function is 3.89% of the height of the origin peak. No significant pseudotranslation is detected.*

¹Intensities estimated from amplitudes.

²Theoretical values of $\langle |L| \rangle$, $\langle L^2 \rangle$ for acentric reflections are 0.5, 0.333 respectively for untwinned datasets, and 0.375, 0.2 for perfectly twinned datasets.

5 Model quality

5.1 Standard geometry

Bond lengths and bond angles in the following residue types are not validated in this section: EDO, PLP, GOL

The Z score for a bond length (or angle) is the number of standard deviations the observed value is removed from the expected value. A bond length (or angle) with $|Z| > 5$ is considered an outlier worth inspection. RMSZ is the root-mean-square of all Z scores of the bond lengths (or angles).

Mol	Chain	Bond lengths		Bond angles	
		RMSZ	# Z >5	RMSZ	# Z >5
1	A	0.47	0/3363	0.56	0/4546
1	B	0.47	0/3329	0.57	0/4502
1	C	0.49	0/3337	0.58	0/4513
All	All	0.48	0/10029	0.57	0/13561

There are no bond length outliers.

There are no bond angle outliers.

There are no chirality outliers.

There are no planarity outliers.

5.2 Too-close contacts

In the following table, the Non-H and H(model) columns list the number of non-hydrogen atoms and hydrogen atoms in the chain respectively. The H(added) column lists the number of hydrogen atoms added and optimized by MolProbity. The Clashes column lists the number of clashes within the asymmetric unit, whereas Symm-Clashes lists symmetry-related clashes.

Mol	Chain	Non-H	H(model)	H(added)	Clashes	Symm-Clashes
1	A	3296	0	3211	7	0
1	B	3266	0	3179	24	0
1	C	3274	0	3191	16	0
2	A	15	0	6	0	0
2	B	15	0	6	1	0
2	C	15	0	6	0	0
3	A	12	0	16	1	0
4	A	12	0	18	1	0
4	B	24	0	36	5	0
4	C	16	0	24	3	0

Continued on next page...

Continued from previous page...

Mol	Chain	Non-H	H(model)	H(added)	Clashes	Symm-Clashes
5	A	443	0	0	1	0
5	B	399	0	0	2	0
5	C	385	0	0	3	0
All	All	11172	0	9693	47	0

The all-atom clashscore is defined as the number of clashes found per 1000 atoms (including hydrogen atoms). The all-atom clashscore for this structure is 2.

The worst 5 of 47 close contacts within the same asymmetric unit are listed below, sorted by their clash magnitude.

Atom-1	Atom-2	Interatomic distance (Å)	Clash overlap (Å)
1:C:120:GLU:HA	4:C:1450:EDO:H22	1.50	0.92
1:C:294:ARG:HH11	1:C:294:ARG:HG2	1.40	0.86
1:C:362:PRO:HA	1:C:378:ARG:HD2	1.63	0.81
1:C:102:ARG:HG2	5:C:2107:HOH:O	1.83	0.78
1:B:46:ARG:HG2	1:B:46:ARG:HH11	1.54	0.72

There are no symmetry-related clashes.

5.3 Torsion angles [i](#)

5.3.1 Protein backbone [i](#)

In the following table, the Percentiles column shows the percent Ramachandran outliers of the chain as a percentile score with respect to all X-ray entries followed by that with respect to entries of similar resolution.

The Analysed column shows the number of residues for which the backbone conformation was analysed, and the total number of residues.

Mol	Chain	Analysed	Favoured	Allowed	Outliers	Percentiles	
1	A	439/465 (94%)	429 (98%)	10 (2%)	0	100	100
1	B	434/465 (93%)	425 (98%)	9 (2%)	0	100	100
1	C	436/465 (94%)	428 (98%)	8 (2%)	0	100	100
All	All	1309/1395 (94%)	1282 (98%)	27 (2%)	0	100	100

There are no Ramachandran outliers to report.

5.3.2 Protein sidechains [i](#)

In the following table, the Percentiles column shows the percent sidechain outliers of the chain as a percentile score with respect to all X-ray entries followed by that with respect to entries of similar resolution.

The Analysed column shows the number of residues for which the sidechain conformation was analysed, and the total number of residues.

Mol	Chain	Analysed	Rotameric	Outliers	Percentiles	
1	A	327/346 (94%)	324 (99%)	3 (1%)	78	79
1	B	323/346 (93%)	318 (98%)	5 (2%)	65	62
1	C	324/346 (94%)	320 (99%)	4 (1%)	71	70
All	All	974/1038 (94%)	962 (99%)	12 (1%)	69	70

5 of 12 residues with a non-rotameric sidechain are listed below:

Mol	Chain	Res	Type
1	B	233	ARG
1	C	46	ARG
1	C	294	ARG
1	C	68	GLN
1	B	16	THR

Sometimes sidechains can be flipped to improve hydrogen bonding and reduce clashes. All (1) such sidechains are listed below:

Mol	Chain	Res	Type
1	B	331	GLN

5.3.3 RNA [i](#)

There are no RNA molecules in this entry.

5.4 Non-standard residues in protein, DNA, RNA chains [i](#)

There are no non-standard protein/DNA/RNA residues in this entry.

5.5 Carbohydrates [i](#)

There are no monosaccharides in this entry.

5.6 Ligand geometry [i](#)

18 ligands are modelled in this entry.

In the following table, the Counts columns list the number of bonds (or angles) for which Mogul statistics could be retrieved, the number of bonds (or angles) that are observed in the model and the number of bonds (or angles) that are defined in the Chemical Component Dictionary. The Link column lists molecule types, if any, to which the group is linked. The Z score for a bond length (or angle) is the number of standard deviations the observed value is removed from the expected value. A bond length (or angle) with $|Z| > 2$ is considered an outlier worth inspection. RMSZ is the root-mean-square of all Z scores of the bond lengths (or angles).

Mol	Type	Chain	Res	Link	Bond lengths			Bond angles		
					Counts	RMSZ	# Z > 2	Counts	RMSZ	# Z > 2
4	EDO	B	1450	-	3,3,3	0.34	0	2,2,2	0.60	0
4	EDO	C	1449	-	3,3,3	0.47	0	2,2,2	0.35	0
4	EDO	B	1448	-	3,3,3	0.41	0	2,2,2	0.35	0
4	EDO	C	1448	-	3,3,3	0.41	0	2,2,2	0.27	0
2	PLP	C	1280	1	15,15,16	1.97	3 (20%)	20,22,23	3.16	7 (35%)
3	GOL	A	1449	-	5,5,5	0.49	0	5,5,5	0.35	0
4	EDO	A	1450	-	3,3,3	0.46	0	2,2,2	0.32	0
2	PLP	B	1280	1	15,15,16	2.07	5 (33%)	20,22,23	3.55	7 (35%)
4	EDO	A	1448	-	3,3,3	0.46	0	2,2,2	0.29	0
4	EDO	C	1450	-	3,3,3	0.39	0	2,2,2	0.12	0
4	EDO	B	1449	-	3,3,3	0.47	0	2,2,2	0.35	0
4	EDO	C	1451	-	3,3,3	0.36	0	2,2,2	0.35	0
4	EDO	B	1445	-	3,3,3	0.31	0	2,2,2	0.55	0
4	EDO	B	1446	-	3,3,3	0.50	0	2,2,2	0.33	0
2	PLP	A	1280	1	15,15,16	1.95	3 (20%)	20,22,23	3.46	6 (30%)
4	EDO	A	1447	-	3,3,3	0.41	0	2,2,2	0.59	0
3	GOL	A	1446	-	5,5,5	0.43	0	5,5,5	0.52	0
4	EDO	B	1447	-	3,3,3	0.40	0	2,2,2	0.39	0

In the following table, the Chirals column lists the number of chiral outliers, the number of chiral centers analysed, the number of these observed in the model and the number defined in the Chemical Component Dictionary. Similar counts are reported in the Torsion and Rings columns. '-' means no outliers of that kind were identified.

Mol	Type	Chain	Res	Link	Chirals	Torsions	Rings
4	EDO	B	1450	-	-	1/1/1/1	-
4	EDO	C	1449	-	-	0/1/1/1	-
4	EDO	B	1448	-	-	1/1/1/1	-
4	EDO	C	1448	-	-	0/1/1/1	-
2	PLP	C	1280	1	-	0/6/6/8	0/1/1/1
3	GOL	A	1449	-	-	4/4/4/4	-

Continued on next page...

Continued from previous page...

Mol	Type	Chain	Res	Link	Chirals	Torsions	Rings
4	EDO	A	1450	-	-	0/1/1/1	-
2	PLP	B	1280	1	-	0/6/6/8	0/1/1/1
4	EDO	A	1448	-	-	0/1/1/1	-
4	EDO	C	1450	-	-	1/1/1/1	-
4	EDO	B	1449	-	-	0/1/1/1	-
4	EDO	C	1451	-	-	0/1/1/1	-
4	EDO	B	1445	-	-	0/1/1/1	-
4	EDO	B	1446	-	-	1/1/1/1	-
2	PLP	A	1280	1	-	0/6/6/8	0/1/1/1
4	EDO	A	1447	-	-	0/1/1/1	-
3	GOL	A	1446	-	-	2/4/4/4	-
4	EDO	B	1447	-	-	0/1/1/1	-

The worst 5 of 11 bond length outliers are listed below:

Mol	Chain	Res	Type	Atoms	Z	Observed(Å)	Ideal(Å)
2	A	1280	PLP	O3-C3	-5.45	1.24	1.37
2	C	1280	PLP	O3-C3	-5.35	1.24	1.37
2	B	1280	PLP	O3-C3	-5.16	1.25	1.37
2	C	1280	PLP	C2A-C2	3.26	1.55	1.50
2	B	1280	PLP	C5A-C5	2.93	1.58	1.50

The worst 5 of 20 bond angle outliers are listed below:

Mol	Chain	Res	Type	Atoms	Z	Observed(°)	Ideal(°)
2	A	1280	PLP	O3P-P-O4P	-8.25	84.78	106.73
2	B	1280	PLP	O3P-P-O4P	-7.84	85.88	106.73
2	B	1280	PLP	O4P-C5A-C5	7.76	124.14	109.35
2	B	1280	PLP	O2P-P-O4P	-7.71	86.22	106.73
2	A	1280	PLP	O4P-C5A-C5	7.41	123.47	109.35

There are no chirality outliers.

5 of 10 torsion outliers are listed below:

Mol	Chain	Res	Type	Atoms
3	A	1446	GOL	O2-C2-C3-O3
3	A	1446	GOL	C1-C2-C3-O3
3	A	1449	GOL	O1-C1-C2-C3
3	A	1449	GOL	C1-C2-C3-O3
4	B	1450	EDO	O1-C1-C2-O2

There are no ring outliers.

6 monomers are involved in 11 short contacts:

Mol	Chain	Res	Type	Clashes	Symm-Clashes
4	C	1448	EDO	1	0
2	B	1280	PLP	1	0
4	A	1448	EDO	1	0
4	C	1450	EDO	2	0
4	B	1445	EDO	5	0
3	A	1446	GOL	1	0

5.7 Other polymers [i](#)

There are no such residues in this entry.

5.8 Polymer linkage issues [i](#)

There are no chain breaks in this entry.

6 Fit of model and data [i](#)

6.1 Protein, DNA and RNA chains [i](#)

In the following table, the column labelled ‘#RSRZ > 2’ contains the number (and percentage) of RSRZ outliers, followed by percent RSRZ outliers for the chain as percentile scores relative to all X-ray entries and entries of similar resolution. The OWAB column contains the minimum, median, 95th percentile and maximum values of the occupancy-weighted average B-factor per residue. The column labelled ‘Q < 0.9’ lists the number of (and percentage) of residues with an average occupancy less than 0.9.

Mol	Chain	Analysed	<RSRZ>	#RSRZ>2	OWAB(Å ²)	Q<0.9
1	A	433/465 (93%)	-0.41	4 (0%) 84 85	12, 18, 29, 47	0
1	B	430/465 (92%)	-0.52	4 (0%) 84 85	13, 18, 28, 45	0
1	C	432/465 (92%)	-0.49	7 (1%) 72 74	12, 17, 29, 48	0
All	All	1295/1395 (92%)	-0.47	15 (1%) 79 81	12, 18, 29, 48	0

The worst 5 of 15 RSRZ outliers are listed below:

Mol	Chain	Res	Type	RSRZ
1	A	13	ALA	6.7
1	A	445	MET	6.5
1	C	13	ALA	5.9
1	C	14	SER	4.4
1	B	15	ASP	3.8

6.2 Non-standard residues in protein, DNA, RNA chains [i](#)

There are no non-standard protein/DNA/RNA residues in this entry.

6.3 Carbohydrates [i](#)

There are no monosaccharides in this entry.

6.4 Ligands [i](#)

In the following table, the Atoms column lists the number of modelled atoms in the group and the number defined in the chemical component dictionary. The B-factors column lists the minimum, median, 95th percentile and maximum values of B factors of atoms in the group. The column labelled ‘Q < 0.9’ lists the number of atoms with occupancy less than 0.9.

Mol	Type	Chain	Res	Atoms	RSCC	RSR	B-factors(\AA^2)	Q<0.9
4	EDO	A	1448	4/4	0.81	0.18	30,34,36,38	0
3	GOL	A	1449	6/6	0.87	0.17	27,33,34,35	0
4	EDO	A	1450	4/4	0.88	0.22	46,46,46,46	0
4	EDO	B	1447	4/4	0.88	0.17	36,37,37,38	0
4	EDO	B	1448	4/4	0.89	0.23	48,49,49,49	0
4	EDO	B	1449	4/4	0.89	0.17	36,37,38,38	0
4	EDO	B	1446	4/4	0.90	0.15	28,33,33,36	0
3	GOL	A	1446	6/6	0.91	0.18	32,34,35,36	0
4	EDO	C	1451	4/4	0.91	0.24	30,35,36,37	0
4	EDO	C	1448	4/4	0.93	0.17	27,32,32,35	0
4	EDO	B	1450	4/4	0.93	0.14	32,34,34,36	0
4	EDO	C	1449	4/4	0.95	0.11	26,28,29,29	0
4	EDO	B	1445	4/4	0.95	0.21	36,36,36,37	0
4	EDO	C	1450	4/4	0.96	0.12	26,27,28,31	0
4	EDO	A	1447	4/4	0.96	0.09	25,26,26,28	0
2	PLP	A	1280	15/16	0.97	0.14	13,14,17,17	0
2	PLP	B	1280	15/16	0.97	0.10	13,14,17,17	0
2	PLP	C	1280	15/16	0.97	0.13	11,13,14,15	0

6.5 Other polymers [i](#)

There are no such residues in this entry.