



Full wwPDB X-ray Structure Validation Report ⓘ

Oct 2, 2021 – 12:16 PM EDT

PDB ID : 3HD3
Title : High resolution crystal structure of cruzain bound to the vinyl sulfone inhibitor SMDC-256047
Authors : Kerr, I.D.; Debnath, M.; Brinen, L.S.
Deposited on : 2009-05-06
Resolution : 1.75 Å(reported)

This is a Full wwPDB X-ray Structure Validation Report for a publicly released PDB entry.

We welcome your comments at validation@mail.wwpdb.org

A user guide is available at

<https://www.wwpdb.org/validation/2017/XrayValidationReportHelp>

with specific help available everywhere you see the ⓘ symbol.

The following versions of software and data (see [references ⓘ](#)) were used in the production of this report:

MolProbity : 4.02b-467
Mogul : 1.8.5 (274361), CSD as541be (2020)
Xtriage (Phenix) : 1.13
EDS : 2.23.2
buster-report : 1.1.7 (2018)
Percentile statistics : 20191225.v01 (using entries in the PDB archive December 25th 2019)
Refmac : 5.8.0158
CCP4 : 7.0.044 (Gargrove)
Ideal geometry (proteins) : Engh & Huber (2001)
Ideal geometry (DNA, RNA) : Parkinson et al. (1996)
Validation Pipeline (wwPDB-VP) : 2.23.2

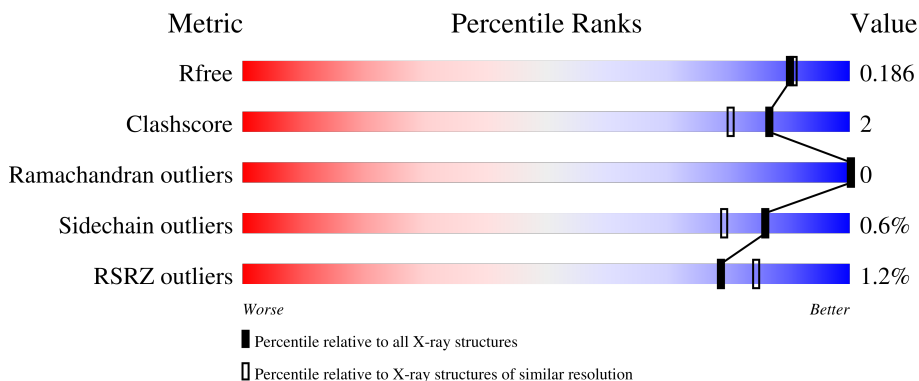
1 Overall quality at a glance

The following experimental techniques were used to determine the structure:

X-RAY DIFFRACTION

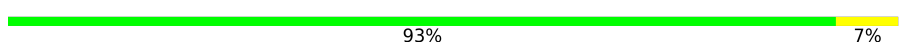
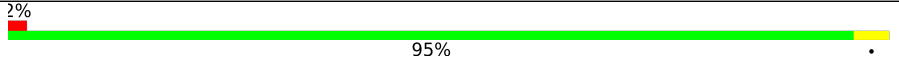
The reported resolution of this entry is 1.75 Å.

Percentile scores (ranging between 0-100) for global validation metrics of the entry are shown in the following graphic. The table shows the number of entries on which the scores are based.



Metric	Whole archive (#Entries)	Similar resolution (#Entries, resolution range(Å))
R_{free}	130704	2340 (1.76-1.76)
Clashscore	141614	2466 (1.76-1.76)
Ramachandran outliers	138981	2437 (1.76-1.76)
Sidechain outliers	138945	2437 (1.76-1.76)
RSRZ outliers	127900	2298 (1.76-1.76)

The table below summarises the geometric issues observed across the polymeric chains and their fit to the electron density. The red, orange, yellow and green segments of the lower bar indicate the fraction of residues that contain outliers for ≥ 3 , 2, 1 and 0 types of geometric quality criteria respectively. A grey segment represents the fraction of residues that are not modelled. The numeric value for each fraction is indicated below the corresponding segment, with a dot representing fractions $\leq 5\%$. The upper red bar (where present) indicates the fraction of residues that have poor fit to the electron density. The numeric value is given above the bar.

Mol	Chain	Length	Quality of chain
1	A	215	 93% 7%
1	B	215	 2% 95% .

2 Entry composition i

There are 7 unique types of molecules in this entry. The entry contains 3672 atoms, of which 0 are hydrogens and 0 are deuteriums.

In the tables below, the ZeroOcc column contains the number of atoms modelled with zero occupancy, the AltConf column contains the number of residues with at least one atom in alternate conformation and the Trace column contains the number of residues modelled with at most 2 atoms.

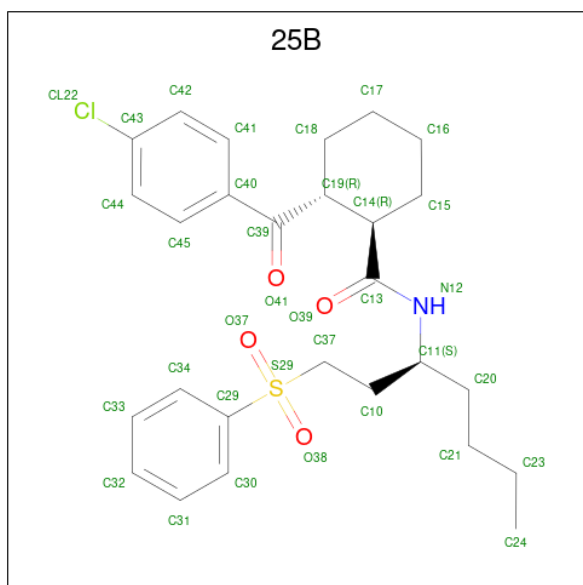
- Molecule 1 is a protein called Cruzipain.

Mol	Chain	Residues	Atoms					ZeroOcc	AltConf	Trace
			Total	C	N	O	S			
1	A	215	Total 1594	C 997	N 266	O 319	S 12	0	1	0
1	B	214	Total 1585	C 992	N 265	O 316	S 12	0	0	0

There are 4 discrepancies between the modelled and reference sequences:

Chain	Residue	Modelled	Actual	Comment	Reference
A	49	ALA	SER	engineered mutation	UNP P25779
A	172	GLY	SER	engineered mutation	UNP P25779
B	49	ALA	SER	engineered mutation	UNP P25779
B	172	GLY	SER	engineered mutation	UNP P25779

- Molecule 2 is (1R,2R)-2-[(4-chlorophenyl)carbonyl]-N-[(1S)-1-[2-(phenylsulfonyl)ethyl]pentyl]cyclohexanecarboxamide (three-letter code: 25B) (formula: C₂₇H₃₄ClNO₄S).



Mol	Chain	Residues	Atoms					ZeroOcc	AltConf	
2	A	1	Total	C	Cl	N	O	S	0	0
			34	27	1	1	4	1		
2	B	1	Total	C	Cl	N	O	S	0	0
			34	27	1	1	4	1		

- Molecule 3 is 1,2-ETHANEDIOL (three-letter code: EDO) (formula: C₂H₆O₂).



Mol	Chain	Residues	Atoms			ZeroOcc	AltConf
3	A	1	Total	C	O	0	0
			4	2	2		
3	B	1	Total	C	O	0	0
			4	2	2		

- Molecule 4 is ETHANOL (three-letter code: EOH) (formula: C₂H₆O).



Mol	Chain	Residues	Atoms			ZeroOcc	AltConf
4	A	1	Total	C	O	0	0
			3	2	1		

- Molecule 5 is DI(HYDROXYETHYL)ETHER (three-letter code: PEG) (formula: $C_4H_{10}O_3$).



Mol	Chain	Residues	Atoms			ZeroOcc	AltConf
5	A	1	Total	C	O	0	0
			7	4	3		
5	B	1	Total	C	O	0	0
			7	4	3		

- Molecule 6 is SULFATE ION (three-letter code: SO4) (formula: O_4S).



Mol	Chain	Residues	Atoms			ZeroOcc	AltConf
6	A	1	Total	O	S	0	0
			5	4	1		

- Molecule 7 is water.

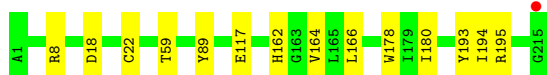
Mol	Chain	Residues	Atoms		ZeroOcc	AltConf
7	A	217	Total	O	0	0
			217	217		
7	B	178	Total	O	0	0
			178	178		

3 Residue-property plots [i](#)

These plots are drawn for all protein, RNA, DNA and oligosaccharide chains in the entry. The first graphic for a chain summarises the proportions of the various outlier classes displayed in the second graphic. The second graphic shows the sequence view annotated by issues in geometry and electron density. Residues are color-coded according to the number of geometric quality criteria for which they contain at least one outlier: green = 0, yellow = 1, orange = 2 and red = 3 or more. A red dot above a residue indicates a poor fit to the electron density ($RSRZ > 2$). Stretches of 2 or more consecutive residues without any outlier are shown as a green connector. Residues present in the sample, but not in the model, are shown in grey.

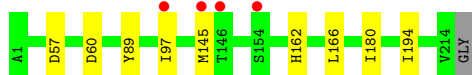
- Molecule 1: Cruzipain

Chain A:  93% 7%



- Molecule 1: Cruzipain

Chain B:  95% 2% 3%



4 Data and refinement statistics

Property	Value	Source
Space group	P 1 21 1	Depositor
Cell constants a, b, c, α , β , γ	44.69Å 72.49Å 60.93Å 90.00° 89.79° 90.00°	Depositor
Resolution (Å)	60.93 – 1.75 60.93 – 1.75	Depositor EDS
% Data completeness (in resolution range)	97.2 (60.93-1.75) 97.1 (60.93-1.75)	Depositor EDS
R_{merge}	0.06	Depositor
R_{sym}	(Not available)	Depositor
$\langle I/\sigma(I) \rangle$ ¹	9.93 (at 1.75Å)	Xtrriage
Refinement program	REFMAC 5.5.0071	Depositor
R, R_{free}	0.143 , 0.176 0.156 , 0.186	Depositor DCC
R_{free} test set	1918 reflections (5.03%)	wwPDB-VP
Wilson B-factor (Å ²)	9.7	Xtrriage
Anisotropy	0.279	Xtrriage
Bulk solvent k_{sol} (e/Å ³), B_{sol} (Å ²)	0.36 , 39.7	EDS
L-test for twinning ²	$\langle L \rangle = 0.49$, $\langle L^2 \rangle = 0.32$	Xtrriage
Estimated twinning fraction	0.031 for h,-k,-l	Xtrriage
F_o, F_c correlation	0.95	EDS
Total number of atoms	3672	wwPDB-VP
Average B, all atoms (Å ²)	6.0	wwPDB-VP

Xtrriage's analysis on translational NCS is as follows: *The largest off-origin peak in the Patterson function is 9.30% of the height of the origin peak. No significant pseudotranslation is detected.*

¹Intensities estimated from amplitudes.

²Theoretical values of $\langle |L| \rangle$, $\langle L^2 \rangle$ for acentric reflections are 0.5, 0.333 respectively for untwinned datasets, and 0.375, 0.2 for perfectly twinned datasets.

5 Model quality [i](#)

5.1 Standard geometry [i](#)

Bond lengths and bond angles in the following residue types are not validated in this section: EOH, SO4, 25B, PEG, EDO

The Z score for a bond length (or angle) is the number of standard deviations the observed value is removed from the expected value. A bond length (or angle) with $|Z| > 5$ is considered an outlier worth inspection. RMSZ is the root-mean-square of all Z scores of the bond lengths (or angles).

Mol	Chain	Bond lengths		Bond angles	
		RMSZ	# Z >5	RMSZ	# Z >5
1	A	0.94	3/1636 (0.2%)	0.80	0/2238
1	B	0.88	0/1624	0.77	0/2223
All	All	0.91	3/3260 (0.1%)	0.78	0/4461

All (3) bond length outliers are listed below:

Mol	Chain	Res	Type	Atoms	Z	Observed(Å)	Ideal(Å)
1	A	22	CYS	CB-SG	-6.73	1.70	1.82
1	A	117	GLU	CG-CD	6.26	1.61	1.51
1	A	164	VAL	CB-CG2	5.30	1.64	1.52

There are no bond angle outliers.

There are no chirality outliers.

There are no planarity outliers.

5.2 Too-close contacts [i](#)

In the following table, the Non-H and H(model) columns list the number of non-hydrogen atoms and hydrogen atoms in the chain respectively. The H(added) column lists the number of hydrogen atoms added and optimized by MolProbity. The Clashes column lists the number of clashes within the asymmetric unit, whereas Symm-Clashes lists symmetry-related clashes.

Mol	Chain	Non-H	H(model)	H(added)	Clashes	Symm-Clashes
1	A	1594	0	1494	7	0
1	B	1585	0	1484	6	0
2	A	34	0	33	1	0
2	B	34	0	33	2	0
3	A	4	0	6	0	0
3	B	4	0	6	0	0

Continued on next page...

Continued from previous page...

Mol	Chain	Non-H	H(model)	H(added)	Clashes	Symm-Clashes
4	A	3	0	6	1	0
5	A	7	0	10	0	0
5	B	7	0	10	0	0
6	A	5	0	0	0	0
7	A	217	0	0	1	0
7	B	178	0	0	0	0
All	All	3672	0	3082	13	0

The all-atom clashscore is defined as the number of clashes found per 1000 atoms (including hydrogen atoms). The all-atom clashscore for this structure is 2.

All (13) close contacts within the same asymmetric unit are listed below, sorted by their clash magnitude.

Atom-1	Atom-2	Interatomic distance (Å)	Clash overlap (Å)
1:A:18:ASP:OD2	4:A:218:EOH:H23	1.67	0.93
1:A:59[A]:THR:HG23	7:A:422:HOH:O	2.02	0.60
1:B:97:ILE:O	1:B:97:ILE:HG23	2.01	0.59
1:B:166:LEU:HD23	1:B:180:ILE:HG12	1.90	0.53
1:B:145:MET:HE3	2:B:216:25B:H32	1.93	0.50
1:B:180:ILE:HB	1:B:194:ILE:HG23	1.97	0.45
1:A:180:ILE:HB	1:A:194:ILE:HG23	1.99	0.44
1:A:162:HIS:ND1	2:A:216:25B:H37A	2.33	0.44
1:B:162:HIS:ND1	2:B:216:25B:H37A	2.34	0.41
1:A:8:ARG:HD3	1:A:193:TYR:CE1	2.55	0.41
1:A:178:TRP:O	1:A:195:ARG:HA	2.21	0.41
1:A:166:LEU:HD23	1:A:180:ILE:HG12	2.03	0.41
1:B:57:ASP:OD2	1:B:60:ASP:OD2	2.38	0.40

There are no symmetry-related clashes.

5.3 Torsion angles [i](#)

5.3.1 Protein backbone [i](#)

In the following table, the Percentiles column shows the percent Ramachandran outliers of the chain as a percentile score with respect to all X-ray entries followed by that with respect to entries of similar resolution.

The Analysed column shows the number of residues for which the backbone conformation was analysed, and the total number of residues.

Mol	Chain	Analysed	Favoured	Allowed	Outliers	Percentiles	
1	A	214/215 (100%)	208 (97%)	6 (3%)	0	100	100
1	B	212/215 (99%)	205 (97%)	7 (3%)	0	100	100
All	All	426/430 (99%)	413 (97%)	13 (3%)	0	100	100

There are no Ramachandran outliers to report.

5.3.2 Protein sidechains [i](#)

In the following table, the Percentiles column shows the percent sidechain outliers of the chain as a percentile score with respect to all X-ray entries followed by that with respect to entries of similar resolution.

The Analysed column shows the number of residues for which the sidechain conformation was analysed, and the total number of residues.

Mol	Chain	Analysed	Rotameric	Outliers	Percentiles	
1	A	166/165 (101%)	165 (99%)	1 (1%)	86	79
1	B	165/165 (100%)	164 (99%)	1 (1%)	86	79
All	All	331/330 (100%)	329 (99%)	2 (1%)	86	79

All (2) residues with a non-rotameric sidechain are listed below:

Mol	Chain	Res	Type
1	A	89	TYR
1	B	89	TYR

Sometimes sidechains can be flipped to improve hydrogen bonding and reduce clashes. There are no such sidechains identified.

5.3.3 RNA [i](#)

There are no RNA molecules in this entry.

5.4 Non-standard residues in protein, DNA, RNA chains [i](#)

There are no non-standard protein/DNA/RNA residues in this entry.

5.5 Carbohydrates [i](#)

There are no monosaccharides in this entry.

5.6 Ligand geometry [i](#)

8 ligands are modelled in this entry.

In the following table, the Counts columns list the number of bonds (or angles) for which Mogul statistics could be retrieved, the number of bonds (or angles) that are observed in the model and the number of bonds (or angles) that are defined in the Chemical Component Dictionary. The Link column lists molecule types, if any, to which the group is linked. The Z score for a bond length (or angle) is the number of standard deviations the observed value is removed from the expected value. A bond length (or angle) with $|Z| > 2$ is considered an outlier worth inspection. RMSZ is the root-mean-square of all Z scores of the bond lengths (or angles).

Mol	Type	Chain	Res	Link	Bond lengths			Bond angles		
					Counts	RMSZ	# Z > 2	Counts	RMSZ	# Z > 2
4	EOH	A	218	-	2,2,2	0.57	0	1,1,1	0.20	0
5	PEG	A	219	-	6,6,6	0.49	0	5,5,5	0.63	0
3	EDO	A	217	-	3,3,3	0.45	0	2,2,2	0.23	0
6	SO4	A	220	-	4,4,4	0.35	0	6,6,6	1.10	0
5	PEG	B	218	-	6,6,6	0.46	0	5,5,5	0.42	0
2	25B	B	216	1	36,36,36	1.97	6 (16%)	47,49,49	2.18	11 (23%)
3	EDO	B	217	-	3,3,3	0.45	0	2,2,2	0.29	0
2	25B	A	216	1	36,36,36	1.80	6 (16%)	47,49,49	1.70	12 (25%)

In the following table, the Chirals column lists the number of chiral outliers, the number of chiral centers analysed, the number of these observed in the model and the number defined in the Chemical Component Dictionary. Similar counts are reported in the Torsion and Rings columns. '-' means no outliers of that kind were identified.

Mol	Type	Chain	Res	Link	Chirals	Torsions	Rings
5	PEG	A	219	-	-	2/4/4/4	-
3	EDO	A	217	-	-	0/1/1/1	-
5	PEG	B	218	-	-	1/4/4/4	-
2	25B	B	216	1	-	5/32/43/43	0/3/3/3
3	EDO	B	217	-	-	0/1/1/1	-
2	25B	A	216	1	-	7/32/43/43	0/3/3/3

All (12) bond length outliers are listed below:

Mol	Chain	Res	Type	Atoms	Z	Observed(Å)	Ideal(Å)
2	B	216	25B	C29-S29	-7.31	1.64	1.76
2	A	216	25B	C29-S29	-5.98	1.66	1.76
2	B	216	25B	C37-S29	-4.62	1.68	1.77
2	B	216	25B	O39-C13	4.15	1.31	1.23
2	A	216	25B	O39-C13	3.95	1.31	1.23
2	A	216	25B	O41-C39	3.63	1.27	1.22
2	A	216	25B	O38-S29	-3.53	1.38	1.44
2	A	216	25B	C37-S29	-3.20	1.71	1.77
2	B	216	25B	C43-CL22	2.94	1.80	1.74
2	B	216	25B	O38-S29	-2.60	1.40	1.44
2	B	216	25B	C10-C37	2.46	1.55	1.52
2	A	216	25B	C19-C39	-2.09	1.49	1.52

All (23) bond angle outliers are listed below:

Mol	Chain	Res	Type	Atoms	Z	Observed(°)	Ideal(°)
2	B	216	25B	O37-S29-O38	-9.58	107.24	118.44
2	A	216	25B	C33-C34-C29	4.76	123.90	118.95
2	B	216	25B	C10-C11-N12	-4.07	104.81	110.54
2	A	216	25B	C10-C11-N12	-3.99	104.92	110.54
2	B	216	25B	C33-C34-C29	3.94	123.04	118.95
2	A	216	25B	C34-C29-C30	-3.69	115.29	120.44
2	B	216	25B	C14-C13-N12	3.55	120.23	116.00
2	B	216	25B	O41-C39-C40	-3.22	116.50	120.66
2	B	216	25B	C37-S29-C29	2.95	109.06	105.03
2	A	216	25B	C14-C13-N12	2.93	119.50	116.00
2	B	216	25B	O37-S29-C29	2.90	111.31	108.36
2	A	216	25B	C30-C29-S29	2.85	122.61	119.49
2	A	216	25B	O39-C13-C14	-2.45	118.78	121.73
2	A	216	25B	C31-C30-C29	2.45	121.49	118.95
2	B	216	25B	O41-C39-C19	2.30	123.21	120.28
2	B	216	25B	C34-C29-C30	-2.29	117.24	120.44
2	A	216	25B	C34-C29-S29	2.29	121.99	119.49
2	B	216	25B	O39-C13-C14	-2.25	119.01	121.73
2	A	216	25B	C18-C19-C14	-2.24	107.05	110.71
2	B	216	25B	C31-C30-C29	2.22	121.26	118.95
2	A	216	25B	C44-C43-CL22	-2.19	115.93	119.35
2	A	216	25B	O38-S29-C29	-2.08	106.25	108.36
2	A	216	25B	C41-C42-C43	-2.08	117.05	119.24

There are no chirality outliers.

All (15) torsion outliers are listed below:

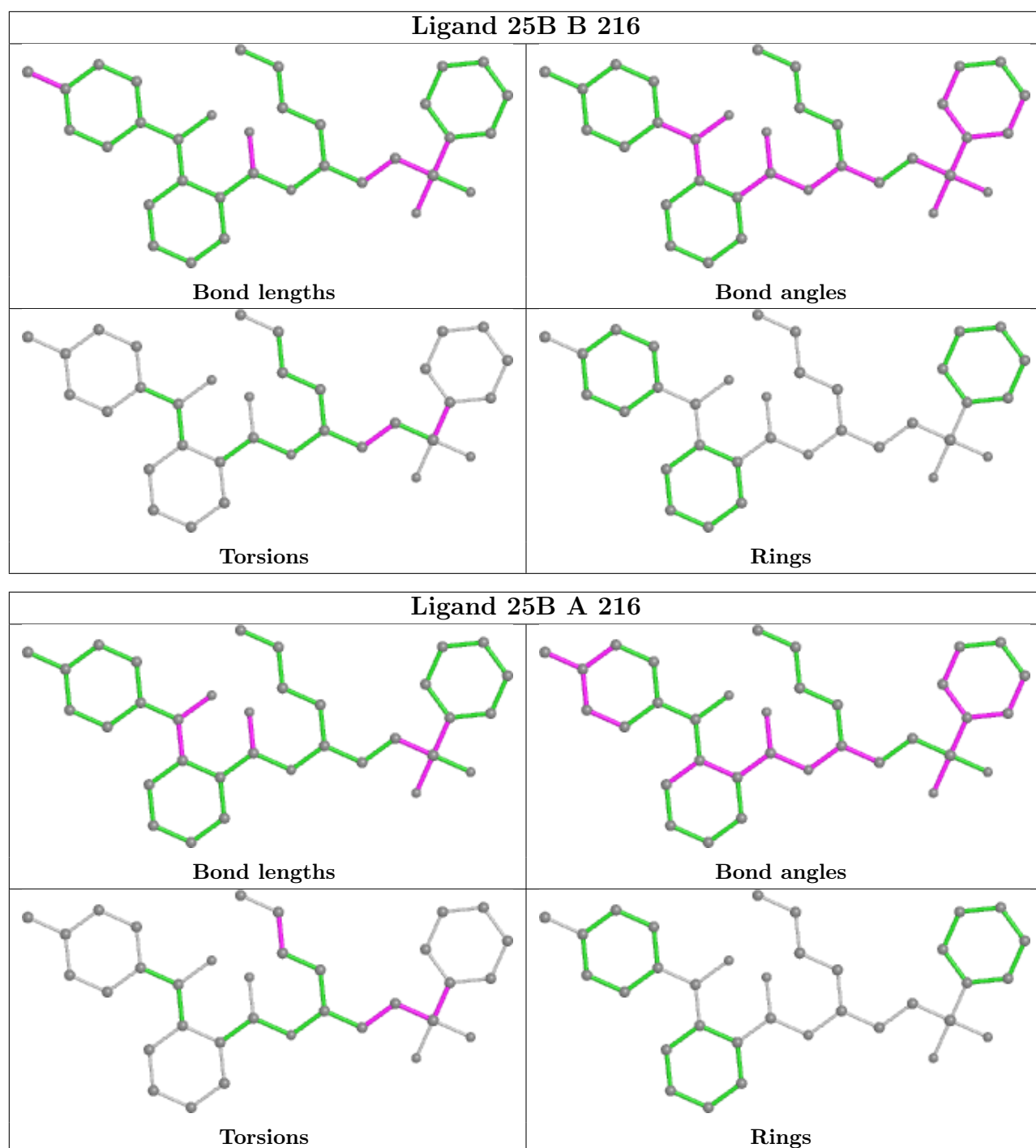
Mol	Chain	Res	Type	Atoms
2	A	216	25B	C30-C29-S29-C37
2	A	216	25B	C34-C29-S29-C37
2	A	216	25B	C30-C29-S29-O38
2	A	216	25B	C34-C29-S29-O38
2	A	216	25B	C11-C10-C37-S29
2	B	216	25B	C11-C10-C37-S29
5	A	219	PEG	O1-C1-C2-O2
5	A	219	PEG	O2-C3-C4-O4
5	B	218	PEG	O2-C3-C4-O4
2	B	216	25B	C34-C29-S29-O38
2	B	216	25B	C30-C29-S29-O38
2	A	216	25B	C20-C21-C23-C24
2	B	216	25B	C34-C29-S29-C37
2	A	216	25B	C10-C37-S29-O38
2	B	216	25B	C30-C29-S29-C37

There are no ring outliers.

3 monomers are involved in 4 short contacts:

Mol	Chain	Res	Type	Clashes	Symm-Clashes
4	A	218	EOH	1	0
2	B	216	25B	2	0
2	A	216	25B	1	0

The following is a two-dimensional graphical depiction of Mogul quality analysis of bond lengths, bond angles, torsion angles, and ring geometry for all instances of the Ligand of Interest. In addition, ligands with molecular weight > 250 and outliers as shown on the validation Tables will also be included. For torsion angles, if less than 5% of the Mogul distribution of torsion angles is within 10 degrees of the torsion angle in question, then that torsion angle is considered an outlier. Any bond that is central to one or more torsion angles identified as an outlier by Mogul will be highlighted in the graph. For rings, the root-mean-square deviation (RMSD) between the ring in question and similar rings identified by Mogul is calculated over all ring torsion angles. If the average RMSD is greater than 60 degrees and the minimal RMSD between the ring in question and any Mogul-identified rings is also greater than 60 degrees, then that ring is considered an outlier. The outliers are highlighted in purple. The color gray indicates Mogul did not find sufficient equivalents in the CSD to analyse the geometry.



5.7 Other polymers [\(i\)](#)

There are no such residues in this entry.

5.8 Polymer linkage issues [\(i\)](#)

There are no chain breaks in this entry.

6 Fit of model and data [i](#)

6.1 Protein, DNA and RNA chains [i](#)

In the following table, the column labelled ‘#RSRZ> 2’ contains the number (and percentage) of RSRZ outliers, followed by percent RSRZ outliers for the chain as percentile scores relative to all X-ray entries and entries of similar resolution. The OWAB column contains the minimum, median, 95th percentile and maximum values of the occupancy-weighted average B-factor per residue. The column labelled ‘Q< 0.9’ lists the number of (and percentage) of residues with an average occupancy less than 0.9.

Mol	Chain	Analysed	<RSRZ>	#RSRZ>2	OWAB(Å ²)	Q<0.9
1	A	215/215 (100%)	-0.21	1 (0%) 91 93	2, 3, 9, 15	2 (0%)
1	B	214/215 (99%)	-0.12	4 (1%) 66 74	2, 5, 12, 22	1 (0%)
All	All	429/430 (99%)	-0.17	5 (1%) 79 84	2, 4, 10, 22	3 (0%)

All (5) RSRZ outliers are listed below:

Mol	Chain	Res	Type	RSRZ
1	A	215	GLY	3.3
1	B	97	ILE	3.2
1	B	145	MET	2.2
1	B	154	SER	2.1
1	B	146	THR	2.1

6.2 Non-standard residues in protein, DNA, RNA chains [i](#)

There are no non-standard protein/DNA/RNA residues in this entry.

6.3 Carbohydrates [i](#)

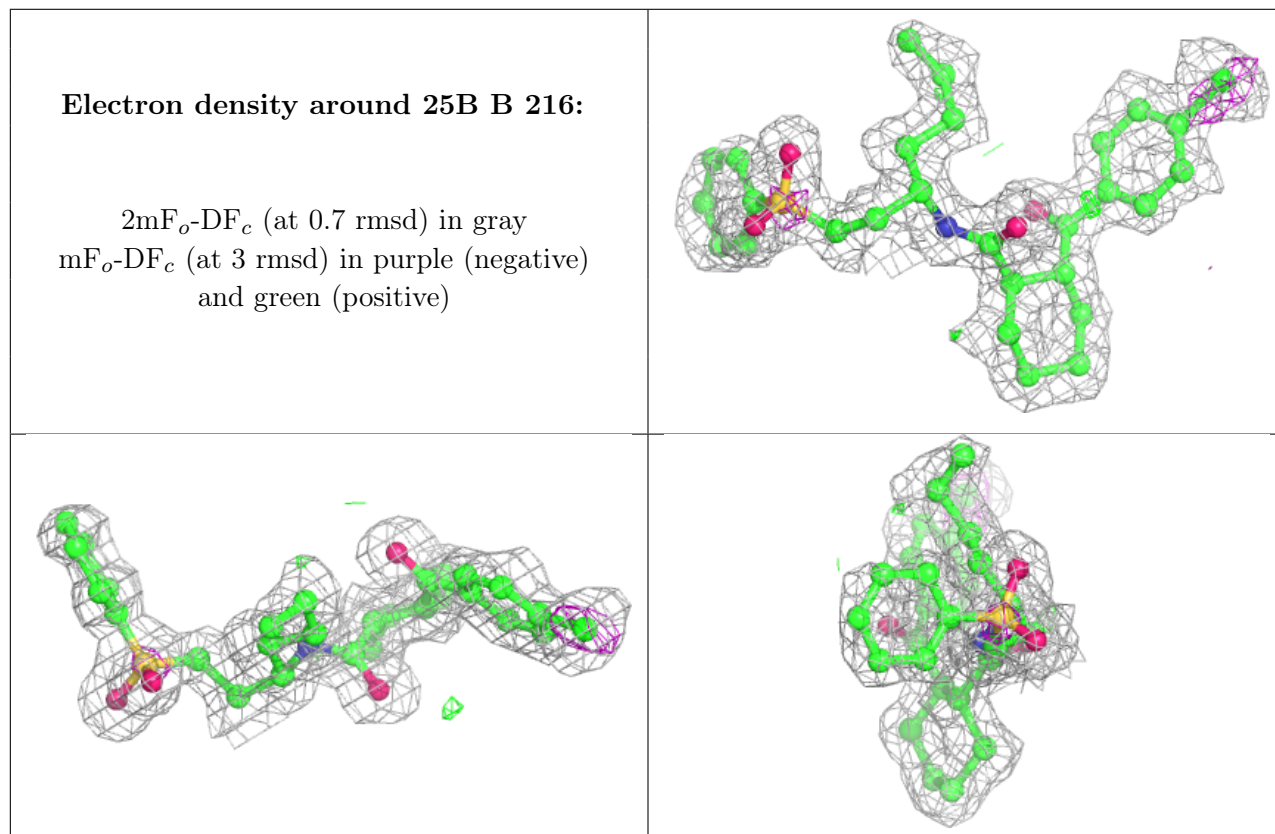
There are no monosaccharides in this entry.

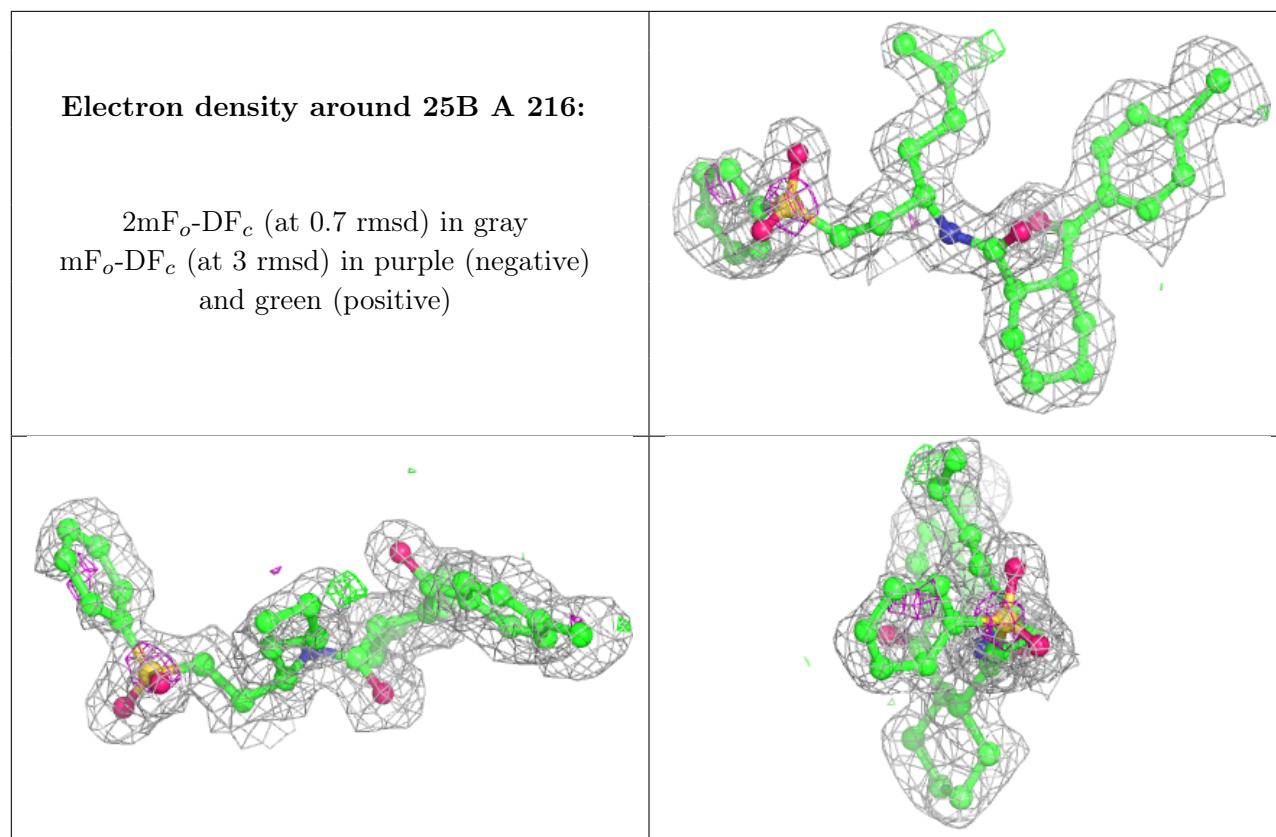
6.4 Ligands [i](#)

In the following table, the Atoms column lists the number of modelled atoms in the group and the number defined in the chemical component dictionary. The B-factors column lists the minimum, median, 95th percentile and maximum values of B factors of atoms in the group. The column labelled ‘Q< 0.9’ lists the number of atoms with occupancy less than 0.9.

Mol	Type	Chain	Res	Atoms	RSCC	RSR	B-factors(\AA^2)	Q<0.9
5	PEG	B	218	7/7	0.75	0.17	27,29,30,31	0
4	EOH	A	218	3/3	0.80	0.16	17,17,20,22	0
3	EDO	B	217	4/4	0.81	0.15	34,34,35,35	0
5	PEG	A	219	7/7	0.86	0.15	31,32,35,38	0
6	SO4	A	220	5/5	0.94	0.15	24,26,27,27	0
3	EDO	A	217	4/4	0.95	0.08	11,12,13,15	0
2	25B	B	216	34/34	0.95	0.10	5,8,22,24	0
2	25B	A	216	34/34	0.96	0.10	4,9,18,22	0

The following is a graphical depiction of the model fit to experimental electron density of all instances of the Ligand of Interest. In addition, ligands with molecular weight > 250 and outliers as shown on the geometry validation Tables will also be included. Each fit is shown from different orientation to approximate a three-dimensional view.





6.5 Other polymers [i](#)

There are no such residues in this entry.