



# Full wwPDB X-ray Structure Validation Report ⓘ

Dec 16, 2023 – 11:17 PM EST

PDB ID : 3NO6  
Title : Crystal structure of a putative thiaminase II (SE1693) from *Staphylococcus epidermidis* ATCC 12228 at 1.65 Å resolution  
Authors : Joint Center for Structural Genomics (JCSG)  
Deposited on : 2010-06-24  
Resolution : 1.65 Å (reported)

This is a Full wwPDB X-ray Structure Validation Report for a publicly released PDB entry.

We welcome your comments at [validation@mail.wwpdb.org](mailto:validation@mail.wwpdb.org)

A user guide is available at

<https://www.wwpdb.org/validation/2017/XrayValidationReportHelp>

with specific help available everywhere you see the ⓘ symbol.

The types of validation reports are described at

<http://www.wwpdb.org/validation/2017/FAQs#types>.

---

The following versions of software and data (see [references ⓘ](#)) were used in the production of this report:

MolProbity : 4.02b-467  
Mogul : 1.8.5 (274361), CSD as541be (2020)  
Xtriage (Phenix) : 1.13  
EDS : 2.36  
Percentile statistics : 20191225.v01 (using entries in the PDB archive December 25th 2019)  
Refmac : 5.8.0158  
CCP4 : 7.0.044 (Gargrove)  
Ideal geometry (proteins) : Engh & Huber (2001)  
Ideal geometry (DNA, RNA) : Parkinson et al. (1996)  
Validation Pipeline (wwPDB-VP) : 2.36

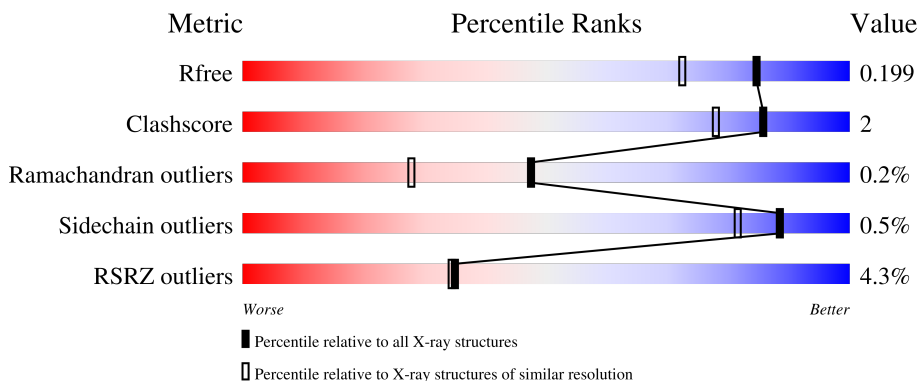
# 1 Overall quality at a glance

The following experimental techniques were used to determine the structure:

*X-RAY DIFFRACTION*

The reported resolution of this entry is 1.65 Å.

Percentile scores (ranging between 0-100) for global validation metrics of the entry are shown in the following graphic. The table shows the number of entries on which the scores are based.



Metric	Whole archive (#Entries)	Similar resolution (#Entries, resolution range(Å))
$R_{free}$	130704	1827 (1.66-1.66)
Clashscore	141614	1931 (1.66-1.66)
Ramachandran outliers	138981	1891 (1.66-1.66)
Sidechain outliers	138945	1891 (1.66-1.66)
RSRZ outliers	127900	1791 (1.66-1.66)

The table below summarises the geometric issues observed across the polymeric chains and their fit to the electron density. The red, orange, yellow and green segments of the lower bar indicate the fraction of residues that contain outliers for  $\geq 3$ , 2, 1 and 0 types of geometric quality criteria respectively. A grey segment represents the fraction of residues that are not modelled. The numeric value for each fraction is indicated below the corresponding segment, with a dot representing fractions  $\leq 5\%$ . The upper red bar (where present) indicates the fraction of residues that have poor fit to the electron density. The numeric value is given above the bar.

Mol	Chain	Length	Quality of chain
1	A	248	
1	B	248	
1	C	248	
1	D	248	

## 2 Entry composition i

There are 7 unique types of molecules in this entry. The entry contains 8745 atoms, of which 0 are hydrogens and 0 are deuteriums.

In the tables below, the ZeroOcc column contains the number of atoms modelled with zero occupancy, the AltConf column contains the number of residues with at least one atom in alternate conformation and the Trace column contains the number of residues modelled with at most 2 atoms.

- Molecule 1 is a protein called Transcriptional activator TenA.

Mol	Chain	Residues	Atoms						ZeroOcc	AltConf	Trace
			Total	C	N	O	S	Se			
1	A	235	1982	1277	323	367	2	13	0	11	0
1	B	226	1976	1279	320	361	2	14	0	23	0
1	C	226	1958	1271	309	361	2	15	0	17	0
1	D	227	1910	1231	306	359	2	12	0	9	0

There are 76 discrepancies between the modelled and reference sequences:

Chain	Residue	Modelled	Actual	Comment	Reference
A	-18	MSE	-	expression tag	UNP Q8CNK1
A	-17	GLY	-	expression tag	UNP Q8CNK1
A	-16	SER	-	expression tag	UNP Q8CNK1
A	-15	ASP	-	expression tag	UNP Q8CNK1
A	-14	LYS	-	expression tag	UNP Q8CNK1
A	-13	ILE	-	expression tag	UNP Q8CNK1
A	-12	HIS	-	expression tag	UNP Q8CNK1
A	-11	HIS	-	expression tag	UNP Q8CNK1
A	-10	HIS	-	expression tag	UNP Q8CNK1
A	-9	HIS	-	expression tag	UNP Q8CNK1
A	-8	HIS	-	expression tag	UNP Q8CNK1
A	-7	HIS	-	expression tag	UNP Q8CNK1
A	-6	GLU	-	expression tag	UNP Q8CNK1
A	-5	ASN	-	expression tag	UNP Q8CNK1
A	-4	LEU	-	expression tag	UNP Q8CNK1
A	-3	TYR	-	expression tag	UNP Q8CNK1
A	-2	PHE	-	expression tag	UNP Q8CNK1
A	-1	GLN	-	expression tag	UNP Q8CNK1
A	0	GLY	-	expression tag	UNP Q8CNK1
B	-18	MSE	-	expression tag	UNP Q8CNK1
B	-17	GLY	-	expression tag	UNP Q8CNK1

*Continued on next page...*

*Continued from previous page...*

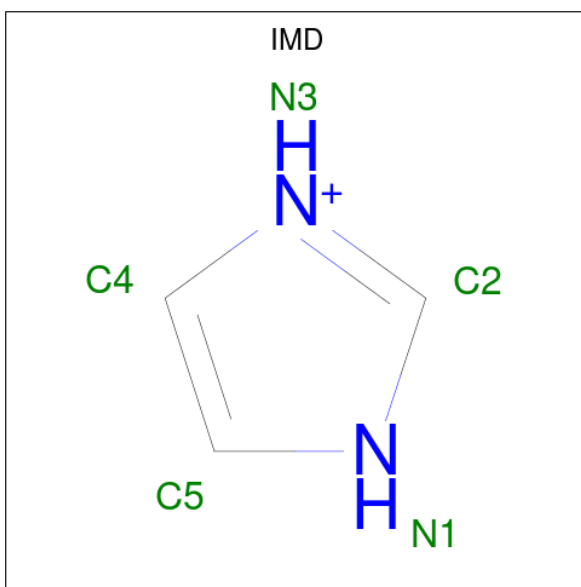
Chain	Residue	Modelled	Actual	Comment	Reference
B	-16	SER	-	expression tag	UNP Q8CNK1
B	-15	ASP	-	expression tag	UNP Q8CNK1
B	-14	LYS	-	expression tag	UNP Q8CNK1
B	-13	ILE	-	expression tag	UNP Q8CNK1
B	-12	HIS	-	expression tag	UNP Q8CNK1
B	-11	HIS	-	expression tag	UNP Q8CNK1
B	-10	HIS	-	expression tag	UNP Q8CNK1
B	-9	HIS	-	expression tag	UNP Q8CNK1
B	-8	HIS	-	expression tag	UNP Q8CNK1
B	-7	HIS	-	expression tag	UNP Q8CNK1
B	-6	GLU	-	expression tag	UNP Q8CNK1
B	-5	ASN	-	expression tag	UNP Q8CNK1
B	-4	LEU	-	expression tag	UNP Q8CNK1
B	-3	TYR	-	expression tag	UNP Q8CNK1
B	-2	PHE	-	expression tag	UNP Q8CNK1
B	-1	GLN	-	expression tag	UNP Q8CNK1
B	0	GLY	-	expression tag	UNP Q8CNK1
C	-18	MSE	-	expression tag	UNP Q8CNK1
C	-17	GLY	-	expression tag	UNP Q8CNK1
C	-16	SER	-	expression tag	UNP Q8CNK1
C	-15	ASP	-	expression tag	UNP Q8CNK1
C	-14	LYS	-	expression tag	UNP Q8CNK1
C	-13	ILE	-	expression tag	UNP Q8CNK1
C	-12	HIS	-	expression tag	UNP Q8CNK1
C	-11	HIS	-	expression tag	UNP Q8CNK1
C	-10	HIS	-	expression tag	UNP Q8CNK1
C	-9	HIS	-	expression tag	UNP Q8CNK1
C	-8	HIS	-	expression tag	UNP Q8CNK1
C	-7	HIS	-	expression tag	UNP Q8CNK1
C	-6	GLU	-	expression tag	UNP Q8CNK1
C	-5	ASN	-	expression tag	UNP Q8CNK1
C	-4	LEU	-	expression tag	UNP Q8CNK1
C	-3	TYR	-	expression tag	UNP Q8CNK1
C	-2	PHE	-	expression tag	UNP Q8CNK1
C	-1	GLN	-	expression tag	UNP Q8CNK1
C	0	GLY	-	expression tag	UNP Q8CNK1
D	-18	MSE	-	expression tag	UNP Q8CNK1
D	-17	GLY	-	expression tag	UNP Q8CNK1
D	-16	SER	-	expression tag	UNP Q8CNK1
D	-15	ASP	-	expression tag	UNP Q8CNK1
D	-14	LYS	-	expression tag	UNP Q8CNK1
D	-13	ILE	-	expression tag	UNP Q8CNK1

*Continued on next page...*

Continued from previous page...

Chain	Residue	Modelled	Actual	Comment	Reference
D	-12	HIS	-	expression tag	UNP Q8CNK1
D	-11	HIS	-	expression tag	UNP Q8CNK1
D	-10	HIS	-	expression tag	UNP Q8CNK1
D	-9	HIS	-	expression tag	UNP Q8CNK1
D	-8	HIS	-	expression tag	UNP Q8CNK1
D	-7	HIS	-	expression tag	UNP Q8CNK1
D	-6	GLU	-	expression tag	UNP Q8CNK1
D	-5	ASN	-	expression tag	UNP Q8CNK1
D	-4	LEU	-	expression tag	UNP Q8CNK1
D	-3	TYR	-	expression tag	UNP Q8CNK1
D	-2	PHE	-	expression tag	UNP Q8CNK1
D	-1	GLN	-	expression tag	UNP Q8CNK1
D	0	GLY	-	expression tag	UNP Q8CNK1

- Molecule 2 is IMIDAZOLE (three-letter code: IMD) (formula:  $C_3H_5N_2$ ).



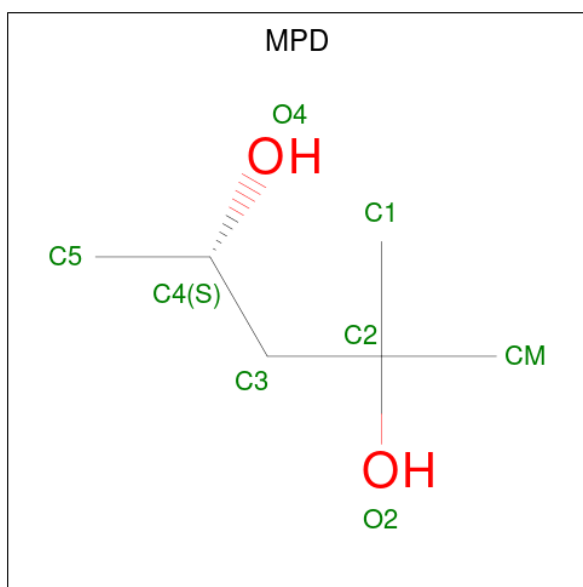
Mol	Chain	Residues	Atoms			ZeroOcc	AltConf
			Total	C	N		
2	A	1	5	3	2	0	0
2	B	1	5	3	2	0	0
2	C	1	5	3	2	0	0
2	D	1	5	3	2	0	0

- Molecule 3 is ACETATE ION (three-letter code: ACT) (formula:  $C_2H_3O_2$ ).



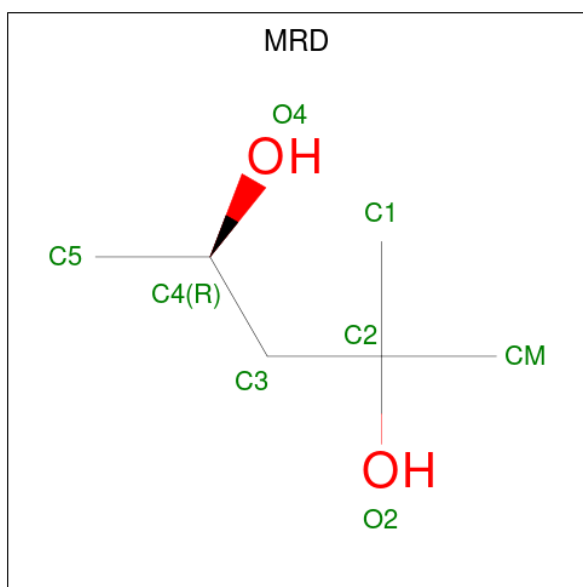
Mol	Chain	Residues	Atoms	ZeroOcc	AltConf
3	A	1	Total C O 4 2 2	0	0
3	A	1	Total C O 4 2 2	0	0
3	C	1	Total C O 4 2 2	0	0
3	D	1	Total C O 4 2 2	0	0
3	D	1	Total C O 4 2 2	0	0
3	D	1	Total C O 4 2 2	0	0

- Molecule 4 is (4S)-2-METHYL-2,4-PENTANEDIOL (three-letter code: MPD) (formula:  $C_6H_{14}O_2$ ).



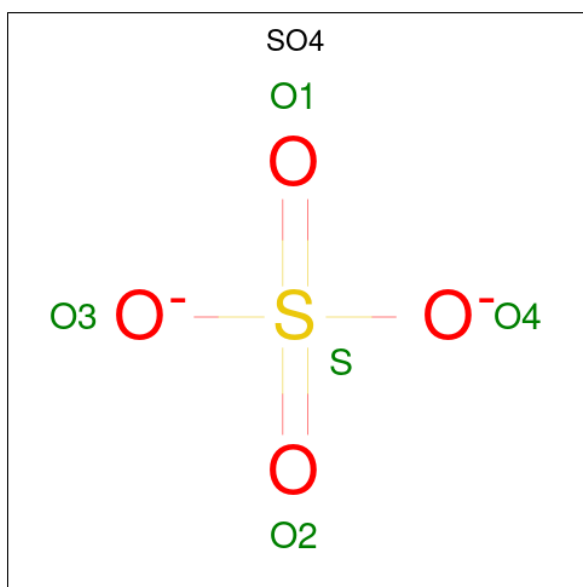
Mol	Chain	Residues	Atoms	ZeroOcc	AltConf
4	B	1	Total C O 8 6 2	0	0
4	B	1	Total C O 8 6 2	0	0
4	C	1	Total C O 8 6 2	0	0
4	C	1	Total C O 8 6 2	0	0
4	D	1	Total C O 8 6 2	0	0
4	D	1	Total C O 8 6 2	0	0
4	D	1	Total C O 8 6 2	0	0

- Molecule 5 is (4R)-2-METHYLPENTANE-2,4-DIOL (three-letter code: MRD) (formula: C<sub>6</sub>H<sub>14</sub>O<sub>2</sub>).



Mol	Chain	Residues	Atoms	ZeroOcc	AltConf
5	C	1	Total C O 8 6 2	0	0
5	C	1	Total C O 8 6 2	0	0
5	D	1	Total C O 8 6 2	0	0

- Molecule 6 is SULFATE ION (three-letter code: SO4) (formula: O<sub>4</sub>S).



Mol	Chain	Residues	Atoms	ZeroOcc	AltConf
6	C	1	Total O S 5 4 1	0	0



- Molecule 7 is water.

Mol	Chain	Residues	Atoms		ZeroOcc	AltConf
7	A	205	Total 208	O 208	0	3
7	B	157	Total 158	O 158	0	1
7	C	227	Total 231	O 231	0	4
7	D	191	Total 193	O 193	0	2

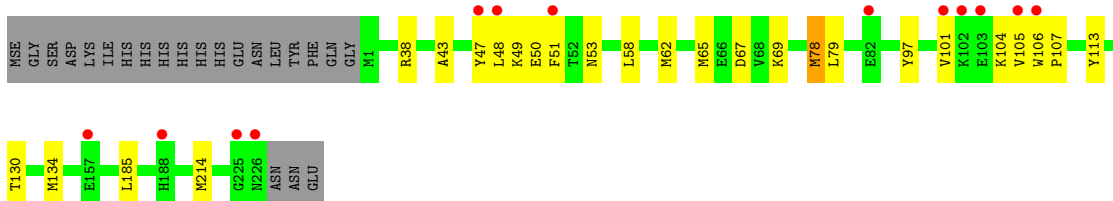
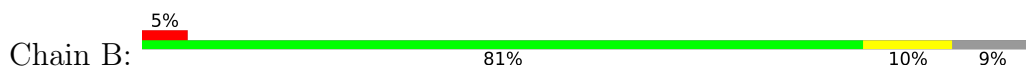
### 3 Residue-property plots [i](#)

These plots are drawn for all protein, RNA, DNA and oligosaccharide chains in the entry. The first graphic for a chain summarises the proportions of the various outlier classes displayed in the second graphic. The second graphic shows the sequence view annotated by issues in geometry and electron density. Residues are color-coded according to the number of geometric quality criteria for which they contain at least one outlier: green = 0, yellow = 1, orange = 2 and red = 3 or more. A red dot above a residue indicates a poor fit to the electron density ( $RSRZ > 2$ ). Stretches of 2 or more consecutive residues without any outlier are shown as a green connector. Residues present in the sample, but not in the model, are shown in grey.

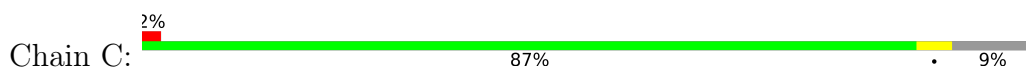
- Molecule 1: Transcriptional activator TenA



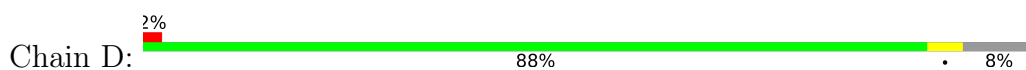
- Molecule 1: Transcriptional activator TenA



- Molecule 1: Transcriptional activator TenA



- Molecule 1: Transcriptional activator TenA



## 4 Data and refinement statistics

Property	Value	Source
Space group	P 21 21 21	Depositor
Cell constants a, b, c, $\alpha$ , $\beta$ , $\gamma$	70.16Å 92.71Å 165.04Å 90.00° 90.00° 90.00°	Depositor
Resolution (Å)	29.87 – 1.65 29.87 – 1.65	Depositor EDS
% Data completeness (in resolution range)	99.5 (29.87-1.65) 99.6 (29.87-1.65)	Depositor EDS
$R_{merge}$	(Not available)	Depositor
$R_{sym}$	0.07	Depositor
$\langle I/\sigma(I) \rangle$ <sup>1</sup>	2.09 (at 1.65Å)	Xtrriage
Refinement program	REFMAC 5.5.0110, PHENIX	Depositor
R, $R_{free}$	0.166 , 0.190 0.177 , 0.199	Depositor DCC
$R_{free}$ test set	6507 reflections (5.03%)	wwPDB-VP
Wilson B-factor (Å <sup>2</sup> )	20.6	Xtrriage
Anisotropy	0.108	Xtrriage
Bulk solvent $k_{sol}$ (e/Å <sup>3</sup> ), $B_{sol}$ (Å <sup>2</sup> )	0.34 , 43.4	EDS
L-test for twinning <sup>2</sup>	$\langle  L  \rangle = 0.50$ , $\langle L^2 \rangle = 0.33$	Xtrriage
Estimated twinning fraction	No twinning to report.	Xtrriage
$F_o, F_c$ correlation	0.97	EDS
Total number of atoms	8745	wwPDB-VP
Average B, all atoms (Å <sup>2</sup> )	27.0	wwPDB-VP

Xtrriage's analysis on translational NCS is as follows: *The analyses of the Patterson function reveals a significant off-origin peak that is 27.13 % of the origin peak, indicating pseudo-translational symmetry. The chance of finding a peak of this or larger height randomly in a structure without pseudo-translational symmetry is equal to 2.3240e-03. The detected translational NCS is most likely also responsible for the elevated intensity ratio.*

<sup>1</sup>Intensities estimated from amplitudes.

<sup>2</sup>Theoretical values of  $\langle |L| \rangle$ ,  $\langle L^2 \rangle$  for acentric reflections are 0.5, 0.333 respectively for untwinned datasets, and 0.375, 0.2 for perfectly twinned datasets.

## 5 Model quality

### 5.1 Standard geometry

Bond lengths and bond angles in the following residue types are not validated in this section: ACT, IMD, SO4, MRD, MPD

The Z score for a bond length (or angle) is the number of standard deviations the observed value is removed from the expected value. A bond length (or angle) with  $|Z| > 5$  is considered an outlier worth inspection. RMSZ is the root-mean-square of all Z scores of the bond lengths (or angles).

Mol	Chain	Bond lengths		Bond angles	
		RMSZ	# Z  >5	RMSZ	# Z  >5
1	A	0.76	0/2052	0.79	1/2750 (0.0%)
1	B	0.77	0/2039	0.80	2/2743 (0.1%)
1	C	0.74	1/2047 (0.0%)	0.80	3/2743 (0.1%)
1	D	0.79	0/1970	0.80	2/2642 (0.1%)
All	All	0.77	1/8108 (0.0%)	0.80	8/10878 (0.1%)

All (1) bond length outliers are listed below:

Mol	Chain	Res	Type	Atoms	Z	Observed(Å)	Ideal(Å)
1	C	38	ARG	CB-CG	-5.14	1.38	1.52

All (8) bond angle outliers are listed below:

Mol	Chain	Res	Type	Atoms	Z	Observed(°)	Ideal(°)
1	A	62	MSE	CG-SE-CE	-10.70	75.35	98.90
1	C	38	ARG	NE-CZ-NH1	5.83	123.21	120.30
1	B	214	MSE	CA-CB-CG	5.71	123.00	113.30
1	D	179	ASP	CB-CG-OD1	5.61	123.35	118.30
1	C	38	ARG	NE-CZ-NH2	-5.35	117.63	120.30
1	D	12	ARG	NE-CZ-NH1	5.19	122.89	120.30
1	B	38	ARG	NE-CZ-NH1	5.12	122.86	120.30
1	C	21	ASP	CB-CG-OD1	5.01	122.81	118.30

There are no chirality outliers.

There are no planarity outliers.

## 5.2 Too-close contacts [i](#)

In the following table, the Non-H and H(model) columns list the number of non-hydrogen atoms and hydrogen atoms in the chain respectively. The H(added) column lists the number of hydrogen atoms added and optimized by MolProbity. The Clashes column lists the number of clashes within the asymmetric unit, whereas Symm-Clashes lists symmetry-related clashes.

Mol	Chain	Non-H	H(model)	H(added)	Clashes	Symm-Clashes
1	A	1982	0	1918	5	0
1	B	1976	0	1896	21	0
1	C	1958	0	1937	7	0
1	D	1910	0	1846	7	0
2	A	5	0	5	0	0
2	B	5	0	5	0	0
2	C	5	0	5	0	0
2	D	5	0	5	0	0
3	A	8	0	6	0	0
3	C	4	0	3	0	0
3	D	12	0	9	0	0
4	B	16	0	28	2	0
4	C	16	0	28	0	0
4	D	24	0	42	0	0
5	C	16	0	28	1	0
5	D	8	0	14	0	0
6	C	5	0	0	0	0
7	A	208	0	0	0	0
7	B	158	0	0	0	0
7	C	231	0	0	0	0
7	D	193	0	0	0	0
All	All	8745	0	7775	35	0

The all-atom clashscore is defined as the number of clashes found per 1000 atoms (including hydrogen atoms). The all-atom clashscore for this structure is 2.

All (35) close contacts within the same asymmetric unit are listed below, sorted by their clash magnitude.

Atom-1	Atom-2	Interatomic distance (Å)	Clash overlap (Å)
1:B:65:MSE:HE1	1:D:79:LEU:HD22	1.51	0.92
1:A:79:LEU:HD22	1:C:65[A]:MSE:SE	2.46	0.65
1:B:78[A]:MSE:HE1	4:B:313:MPD:H13	1.80	0.64
1:B:79:LEU:HD22	1:D:65[B]:MSE:SE	2.48	0.63
1:C:159[B]:VAL:HG23	1:C:162:LYS:HE2	1.81	0.62
1:B:65:MSE:CE	1:D:79:LEU:HD22	2.30	0.56

*Continued on next page...*

Continued from previous page...

Atom-1	Atom-2	Interatomic distance (Å)	Clash overlap (Å)
1:C:55:TYR:CE1	1:C:134[B]:MSE:HE1	2.43	0.53
1:D:159[B]:VAL:HG23	1:D:162:LYS:CE	2.39	0.52
1:B:48[A]:LEU:CD2	4:B:313:MPD:H12	2.40	0.52
1:C:159[B]:VAL:HG23	1:C:162:LYS:CE	2.42	0.50
1:B:65:MSE:HE3	1:B:69:LYS:HG3	1.93	0.49
1:A:149[B]:MSE:HE2	1:A:149[B]:MSE:HA	1.94	0.48
1:B:58:LEU:HD21	1:B:130:THR:HB	1.94	0.48
1:B:62:MSE:HE2	1:B:67:ASP:HB3	1.95	0.48
1:B:48[A]:LEU:HD22	1:B:78[A]:MSE:HE3	1.97	0.47
1:A:35:GLN:HG2	1:A:39:GLN:OE1	2.15	0.47
1:C:130:THR:O	1:C:134[A]:MSE:HG3	2.15	0.46
1:B:43:ALA:O	1:B:47[B]:TYR:HD2	1.99	0.45
1:B:65:MSE:HE1	1:D:79:LEU:CD2	2.33	0.45
1:A:57:MSE:HE3	5:C:304:MRD:H3C1	1.99	0.45
1:B:43:ALA:O	1:B:47[B]:TYR:CD2	2.72	0.42
1:B:104[B]:LYS:CB	1:B:106[B]:TRP:HE1	2.32	0.42
1:B:105[A]:VAL:O	1:B:105[A]:VAL:HG13	2.19	0.42
1:B:49[B]:LYS:NZ	1:B:53:ASN:HD21	2.18	0.42
1:C:134[B]:MSE:HE3	1:C:134[B]:MSE:HB3	1.87	0.42
1:D:52:THR:HG23	1:D:75:ILE:HG23	2.02	0.41
1:B:97:TYR:CZ	1:B:101:VAL:HG11	2.55	0.41
1:B:62:MSE:HE1	1:B:185:LEU:HD11	2.03	0.41
1:B:50[B]:GLU:O	1:B:53:ASN:HB2	2.21	0.41
1:A:74:GLN:O	1:A:78[A]:MSE:HG2	2.21	0.41
1:B:48[B]:LEU:C	1:B:48[B]:LEU:HD23	2.41	0.41
1:B:51[A]:PHE:CE1	1:B:134[A]:MSE:HB2	2.56	0.40
1:B:97:TYR:O	1:B:101:VAL:HG22	2.22	0.40
1:D:25:GLN:O	1:D:153:LYS:HE2	2.20	0.40
1:C:105:VAL:HG12	1:C:107:PRO:HD3	2.02	0.40

There are no symmetry-related clashes.

## 5.3 Torsion angles [i](#)

### 5.3.1 Protein backbone [i](#)

In the following table, the Percentiles column shows the percent Ramachandran outliers of the chain as a percentile score with respect to all X-ray entries followed by that with respect to entries of similar resolution.

The Analysed column shows the number of residues for which the backbone conformation was analysed, and the total number of residues.

Mol	Chain	Analysed	Favoured	Allowed	Outliers	Percentiles	
1	A	244/248 (98%)	242 (99%)	1 (0%)	1 (0%)	34	16
1	B	247/248 (100%)	245 (99%)	1 (0%)	1 (0%)	34	16
1	C	241/248 (97%)	240 (100%)	1 (0%)	0	100	100
1	D	234/248 (94%)	233 (100%)	1 (0%)	0	100	100
All	All	966/992 (97%)	960 (99%)	4 (0%)	2 (0%)	47	28

All (2) Ramachandran outliers are listed below:

Mol	Chain	Res	Type
1	A	82	GLU
1	B	107	PRO

### 5.3.2 Protein sidechains [i](#)

In the following table, the Percentiles column shows the percent sidechain outliers of the chain as a percentile score with respect to all X-ray entries followed by that with respect to entries of similar resolution.

The Analysed column shows the number of residues for which the sidechain conformation was analysed, and the total number of residues.

Mol	Chain	Analysed	Rotameric	Outliers	Percentiles	
1	A	211/209 (101%)	210 (100%)	1 (0%)	88	81
1	B	206/209 (99%)	203 (98%)	3 (2%)	65	44
1	C	215/209 (103%)	215 (100%)	0	100	100
1	D	205/209 (98%)	203 (99%)	2 (1%)	76	62
All	All	837/836 (100%)	831 (99%)	6 (1%)	88	73

All (6) residues with a non-rotameric sidechain are listed below:

Mol	Chain	Res	Type
1	A	113	TYR
1	B	78[A]	MSE
1	B	78[B]	MSE
1	B	113	TYR
1	D	65[A]	MSE
1	D	65[B]	MSE

Sometimes sidechains can be flipped to improve hydrogen bonding and reduce clashes. All (3) such sidechains are listed below:

Mol	Chain	Res	Type
1	B	53	ASN
1	B	74	GLN
1	B	180	GLN

### 5.3.3 RNA [i](#)

There are no RNA molecules in this entry.

### 5.4 Non-standard residues in protein, DNA, RNA chains [i](#)

There are no non-standard protein/DNA/RNA residues in this entry.

### 5.5 Carbohydrates [i](#)

There are no monosaccharides in this entry.

### 5.6 Ligand geometry [i](#)

21 ligands are modelled in this entry.

In the following table, the Counts columns list the number of bonds (or angles) for which Mogul statistics could be retrieved, the number of bonds (or angles) that are observed in the model and the number of bonds (or angles) that are defined in the Chemical Component Dictionary. The Link column lists molecule types, if any, to which the group is linked. The Z score for a bond length (or angle) is the number of standard deviations the observed value is removed from the expected value. A bond length (or angle) with  $|Z| > 2$  is considered an outlier worth inspection. RMSZ is the root-mean-square of all Z scores of the bond lengths (or angles).

Mol	Type	Chain	Res	Link	Bond lengths			Bond angles		
					Counts	RMSZ	$\# Z  > 2$	Counts	RMSZ	$\# Z  > 2$
2	IMD	B	301	-	3,5,5	0.46	0	4,5,5	0.59	0
3	ACT	D	317	-	3,3,3	1.00	0	3,3,3	1.99	2 (66%)
4	MPD	D	309	-	7,7,7	0.33	0	9,10,10	0.84	0
6	SO4	C	320	-	4,4,4	0.11	0	6,6,6	0.31	0
4	MPD	C	307	-	7,7,7	0.39	0	9,10,10	0.72	0
4	MPD	C	306	-	7,7,7	0.43	0	9,10,10	1.34	1 (11%)
5	MRD	C	305	-	7,7,7	0.41	0	9,10,10	0.73	0
3	ACT	C	314	-	3,3,3	0.81	0	3,3,3	1.45	0
4	MPD	B	313	-	7,7,7	0.42	0	9,10,10	0.82	0
4	MPD	D	312	-	7,7,7	0.48	0	9,10,10	1.17	1 (11%)
5	MRD	C	304	-	7,7,7	0.49	0	9,10,10	0.90	0



Mol	Type	Chain	Res	Link	Bond lengths			Bond angles		
					Counts	RMSZ	# Z  > 2	Counts	RMSZ	# Z  > 2
4	MPD	D	311	-	7,7,7	0.44	0	9,10,10	0.71	0
3	ACT	D	316	-	3,3,3	0.80	0	3,3,3	1.56	1 (33%)
5	MRD	D	308	-	7,7,7	0.40	0	9,10,10	0.38	0
2	IMD	C	303	-	3,5,5	0.74	0	4,5,5	0.70	0
2	IMD	A	300	-	3,5,5	0.32	0	4,5,5	0.89	0
2	IMD	D	302	-	3,5,5	0.49	0	4,5,5	0.56	0
4	MPD	B	310	-	7,7,7	0.31	0	9,10,10	0.82	0
3	ACT	A	319	-	3,3,3	0.80	0	3,3,3	1.29	0
3	ACT	A	318	-	3,3,3	0.88	0	3,3,3	1.33	0
3	ACT	D	315	-	3,3,3	0.79	0	3,3,3	1.51	0

In the following table, the Chirals column lists the number of chiral outliers, the number of chiral centers analysed, the number of these observed in the model and the number defined in the Chemical Component Dictionary. Similar counts are reported in the Torsion and Rings columns. '-' means no outliers of that kind were identified.

Mol	Type	Chain	Res	Link	Chirals	Torsions	Rings
4	MPD	B	313	-	-	1/5/5/5	-
4	MPD	C	307	-	-	0/5/5/5	-
4	MPD	D	312	-	-	0/5/5/5	-
5	MRD	C	304	-	-	0/5/5/5	-
2	IMD	D	302	-	-	-	0/1/1/1
2	IMD	B	301	-	-	-	0/1/1/1
4	MPD	B	310	-	-	0/5/5/5	-
4	MPD	C	306	-	-	2/5/5/5	-
4	MPD	D	311	-	-	1/5/5/5	-
5	MRD	C	305	-	-	3/5/5/5	-
4	MPD	D	309	-	-	0/5/5/5	-
5	MRD	D	308	-	-	0/5/5/5	-
2	IMD	C	303	-	-	-	0/1/1/1
2	IMD	A	300	-	-	-	0/1/1/1

There are no bond length outliers.

All (5) bond angle outliers are listed below:

Mol	Chain	Res	Type	Atoms	Z	Observed(°)	Ideal(°)
4	D	312	MPD	CM-C2-C1	-3.02	104.28	110.57
3	D	317	ACT	OXT-C-O	-2.73	111.99	122.05
4	C	306	MPD	CM-C2-C1	-2.20	106.00	110.57
3	D	317	ACT	OXT-C-CH3	2.05	123.66	115.18
3	D	316	ACT	OXT-C-O	-2.01	114.65	122.05

There are no chirality outliers.

All (7) torsion outliers are listed below:

Mol	Chain	Res	Type	Atoms
4	B	313	MPD	C2-C3-C4-C5
4	C	306	MPD	C2-C3-C4-C5
5	C	305	MRD	C1-C2-C3-C4
5	C	305	MRD	O2-C2-C3-C4
5	C	305	MRD	CM-C2-C3-C4
4	D	311	MPD	O2-C2-C3-C4
4	C	306	MPD	C2-C3-C4-O4

There are no ring outliers.

2 monomers are involved in 3 short contacts:

Mol	Chain	Res	Type	Clashes	Symm-Clashes
4	B	313	MPD	2	0
5	C	304	MRD	1	0

## 5.7 Other polymers [i](#)

There are no such residues in this entry.

## 5.8 Polymer linkage issues [i](#)

There are no chain breaks in this entry.

## 6 Fit of model and data [i](#)

### 6.1 Protein, DNA and RNA chains [i](#)

In the following table, the column labelled ‘#RSRZ > 2’ contains the number (and percentage) of RSRZ outliers, followed by percent RSRZ outliers for the chain as percentile scores relative to all X-ray entries and entries of similar resolution. The OWAB column contains the minimum, median, 95<sup>th</sup> percentile and maximum values of the occupancy-weighted average B-factor per residue. The column labelled ‘Q < 0.9’ lists the number of (and percentage) of residues with an average occupancy less than 0.9.

Mol	Chain	Analysed	<RSRZ>	#RSRZ>2	OWAB(Å <sup>2</sup> )	Q<0.9
1	A	224/248 (90%)	-0.01	14 (6%) 20 19	15, 21, 46, 73	0
1	B	215/248 (86%)	0.20	13 (6%) 21 20	17, 28, 50, 64	0
1	C	215/248 (86%)	-0.16	4 (1%) 66 69	16, 21, 34, 68	0
1	D	216/248 (87%)	0.02	6 (2%) 53 53	17, 25, 41, 69	0
All	All	870/992 (87%)	0.01	37 (4%) 35 34	15, 24, 46, 73	0

All (37) RSRZ outliers are listed below:

Mol	Chain	Res	Type	RSRZ
1	C	226	ASN	7.0
1	D	226	ASN	6.8
1	A	-5	ASN	6.8
1	C	225	GLY	6.1
1	B	105[A]	VAL	5.5
1	D	227	ASN	5.4
1	A	-2	PHE	5.3
1	A	-6	GLU	5.2
1	B	106[A]	TRP	4.8
1	A	225	GLY	4.5
1	B	226	ASN	4.2
1	A	-7	HIS	4.2
1	B	82	GLU	4.1
1	B	101	VAL	4.1
1	A	227	ASN	4.0
1	D	225	GLY	3.9
1	B	102[A]	LYS	3.8
1	A	226	ASN	3.7
1	A	-4	LEU	3.5
1	A	102	LYS	3.4
1	B	48[A]	LEU	3.2

*Continued on next page...*

*Continued from previous page...*

Mol	Chain	Res	Type	RSRZ
1	A	82	GLU	3.0
1	A	103	GLU	2.8
1	B	103[A]	GLU	2.8
1	C	187	LYS	2.7
1	B	188	HIS	2.7
1	A	83	VAL	2.6
1	B	157	GLU	2.6
1	B	225	GLY	2.6
1	D	224	GLY	2.6
1	C	188	HIS	2.6
1	A	81	GLY	2.5
1	B	51[A]	PHE	2.4
1	D	188	HIS	2.2
1	B	47[A]	TYR	2.2
1	D	81	GLY	2.2
1	A	-3	TYR	2.0

## 6.2 Non-standard residues in protein, DNA, RNA chains [i](#)

There are no non-standard protein/DNA/RNA residues in this entry.

## 6.3 Carbohydrates [i](#)

There are no monosaccharides in this entry.

## 6.4 Ligands [i](#)

In the following table, the Atoms column lists the number of modelled atoms in the group and the number defined in the chemical component dictionary. The B-factors column lists the minimum, median, 95<sup>th</sup> percentile and maximum values of B factors of atoms in the group. The column labelled 'Q< 0.9' lists the number of atoms with occupancy less than 0.9.

Mol	Type	Chain	Res	Atoms	RSCC	RSR	B-factors(Å <sup>2</sup> )	Q<0.9
3	ACT	D	315	4/4	0.64	0.22	50,50,50,50	0
3	ACT	C	314	4/4	0.67	0.19	49,50,50,50	0
4	MPD	B	313	8/8	0.69	0.22	53,55,56,56	0
3	ACT	D	316	4/4	0.71	0.17	58,59,59,59	0
3	ACT	D	317	4/4	0.77	0.20	45,45,46,46	0
3	ACT	A	319	4/4	0.80	0.18	51,52,52,52	0
4	MPD	D	311	8/8	0.80	0.17	35,40,41,41	0

*Continued on next page...*

*Continued from previous page...*

Mol	Type	Chain	Res	Atoms	RSCC	RSR	B-factors( $\text{\AA}^2$ )	Q<0.9
6	SO4	C	320	5/5	0.81	0.20	74,75,76,77	0
4	MPD	D	309	8/8	0.82	0.16	24,34,40,43	0
4	MPD	C	307	8/8	0.83	0.17	24,33,38,38	0
5	MRD	C	305	8/8	0.83	0.19	52,54,55,57	0
3	ACT	A	318	4/4	0.83	0.18	53,53,54,54	0
4	MPD	C	306	8/8	0.85	0.17	33,36,38,38	0
2	IMD	B	301	5/5	0.85	0.22	45,46,46,47	0
4	MPD	D	312	8/8	0.86	0.14	31,35,39,39	0
5	MRD	C	304	8/8	0.87	0.12	28,32,34,34	0
5	MRD	D	308	8/8	0.89	0.17	26,35,37,38	0
4	MPD	B	310	8/8	0.91	0.10	32,35,35,35	0
2	IMD	D	302	5/5	0.95	0.09	25,27,28,29	0
2	IMD	A	300	5/5	0.95	0.07	23,25,25,27	0
2	IMD	C	303	5/5	0.97	0.11	22,24,25,28	0

## 6.5 Other polymers [i](#)

There are no such residues in this entry.