



# Full wwPDB X-ray Structure Validation Report ⓘ

Jun 16, 2024 – 10:45 PM EDT

PDB ID : 3O1J  
Title : Crystal Structure of the TorS sensor domain - TorT complex in the absence of isopropanol  
Authors : Moore, J.O.; Hendrickson, W.A.  
Deposited on : 2010-07-21  
Resolution : 2.95 Å(reported)

This is a Full wwPDB X-ray Structure Validation Report for a publicly released PDB entry.

We welcome your comments at [validation@mail.wwpdb.org](mailto:validation@mail.wwpdb.org)

A user guide is available at

<https://www.wwpdb.org/validation/2017/XrayValidationReportHelp>

with specific help available everywhere you see the ⓘ symbol.

The types of validation reports are described at

<http://www.wwpdb.org/validation/2017/FAQs#types>.

---

The following versions of software and data (see [references ⓘ](#)) were used in the production of this report:

MolProbity : 4.02b-467  
Mogul : 2022.3.0, CSD as543be (2022)  
Xtriage (Phenix) : 1.20.1  
EDS : 2.37.1  
Percentile statistics : 20191225.v01 (using entries in the PDB archive December 25th 2019)  
Refmac : 5.8.0158  
CCP4 : 7.0.044 (Gargrove)  
Ideal geometry (proteins) : Engh & Huber (2001)  
Ideal geometry (DNA, RNA) : Parkinson et al. (1996)  
Validation Pipeline (wwPDB-VP) : 2.37.1

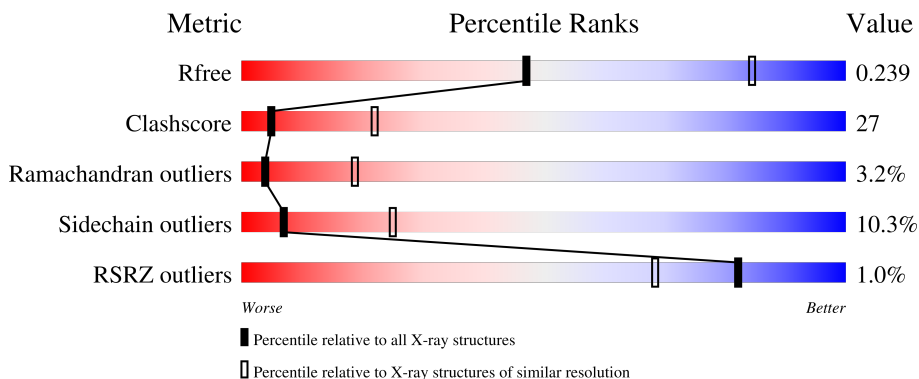
# 1 Overall quality at a glance

The following experimental techniques were used to determine the structure:

*X-RAY DIFFRACTION*

The reported resolution of this entry is 2.95 Å.

Percentile scores (ranging between 0-100) for global validation metrics of the entry are shown in the following graphic. The table shows the number of entries on which the scores are based.



Metric	Whole archive (#Entries)	Similar resolution (#Entries, resolution range(Å))
$R_{free}$	130704	3104 (3.00-2.92)
Clashscore	141614	3462 (3.00-2.92)
Ramachandran outliers	138981	3340 (3.00-2.92)
Sidechain outliers	138945	3343 (3.00-2.92)
RSRZ outliers	127900	2986 (3.00-2.92)

The table below summarises the geometric issues observed across the polymeric chains and their fit to the electron density. The red, orange, yellow and green segments of the lower bar indicate the fraction of residues that contain outliers for  $\geq 3$ , 2, 1 and 0 types of geometric quality criteria respectively. A grey segment represents the fraction of residues that are not modelled. The numeric value for each fraction is indicated below the corresponding segment, with a dot representing fractions  $\leq 5\%$ . The upper red bar (where present) indicates the fraction of residues that have poor fit to the electron density. The numeric value is given above the bar.

Mol	Chain	Length	Quality of chain
1	A	277	
1	B	277	
2	C	304	
2	D	304	

## 2 Entry composition [i](#)

There are 4 unique types of molecules in this entry. The entry contains 9119 atoms, of which 0 are hydrogens and 0 are deuteriums.

In the tables below, the ZeroOcc column contains the number of atoms modelled with zero occupancy, the AltConf column contains the number of residues with at least one atom in alternate conformation and the Trace column contains the number of residues modelled with at most 2 atoms.

- Molecule 1 is a protein called Sensor protein TorS.

Mol	Chain	Residues	Atoms					ZeroOcc	AltConf	Trace
			Total	C	N	O	S			
1	A	273	Total	C	N	O	S	0	0	0
			2193	1360	384	442	7			
1	B	273	Total	C	N	O	S	0	0	0
			2193	1360	384	442	7			

There are 10 discrepancies between the modelled and reference sequences:

Chain	Residue	Modelled	Actual	Comment	Reference
A	47	GLY	-	EXPRESSION TAG	UNP Q87ID1
A	48	SER	-	EXPRESSION TAG	UNP Q87ID1
A	49	GLY	-	EXPRESSION TAG	UNP Q87ID1
A	50	SER	-	EXPRESSION TAG	UNP Q87ID1
A	323	LYS	-	EXPRESSION TAG	UNP Q87ID1
B	47	GLY	-	EXPRESSION TAG	UNP Q87ID1
B	48	SER	-	EXPRESSION TAG	UNP Q87ID1
B	49	GLY	-	EXPRESSION TAG	UNP Q87ID1
B	50	SER	-	EXPRESSION TAG	UNP Q87ID1
B	323	LYS	-	EXPRESSION TAG	UNP Q87ID1

- Molecule 2 is a protein called Periplasmic protein TorT.

Mol	Chain	Residues	Atoms					ZeroOcc	AltConf	Trace
			Total	C	N	O	S			
2	C	296	Total	C	N	O	S	0	0	0
			2342	1486	403	446	7			
2	D	296	Total	C	N	O	S	0	0	0
			2342	1486	403	446	7			

There are 10 discrepancies between the modelled and reference sequences:

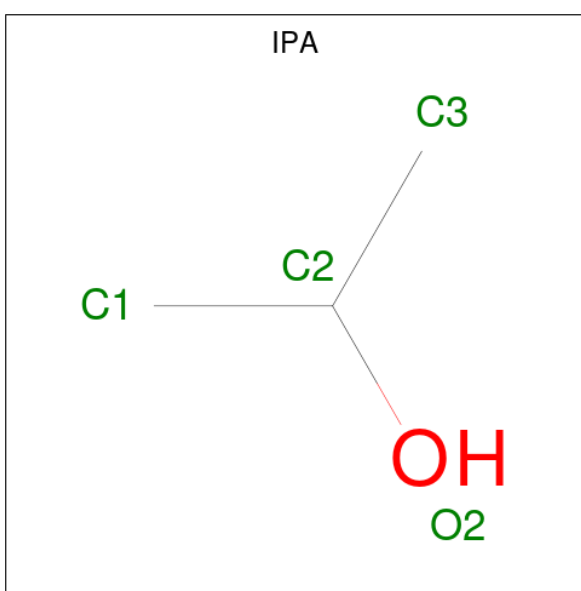
Chain	Residue	Modelled	Actual	Comment	Reference
C	26	GLY	-	EXPRESSION TAG	UNP Q87ID2
C	27	SER	-	EXPRESSION TAG	UNP Q87ID2

*Continued on next page...*

Continued from previous page...

Chain	Residue	Modelled	Actual	Comment	Reference
C	28	GLY	-	EXPRESSION TAG	UNP Q87ID2
C	29	SER	-	EXPRESSION TAG	UNP Q87ID2
C	30	ASP	-	EXPRESSION TAG	UNP Q87ID2
D	26	GLY	-	EXPRESSION TAG	UNP Q87ID2
D	27	SER	-	EXPRESSION TAG	UNP Q87ID2
D	28	GLY	-	EXPRESSION TAG	UNP Q87ID2
D	29	SER	-	EXPRESSION TAG	UNP Q87ID2
D	30	ASP	-	EXPRESSION TAG	UNP Q87ID2

- Molecule 3 is ISOPROPYL ALCOHOL (three-letter code: IPA) (formula: C<sub>3</sub>H<sub>8</sub>O).



Mol	Chain	Residues	Atoms	ZeroOcc	AltConf
3	C	1	Total C O 4 3 1	0	0
3	D	1	Total C O 4 3 1	0	0

- Molecule 4 is water.

Mol	Chain	Residues	Atoms	ZeroOcc	AltConf
4	A	14	Total O 14 14	0	0
4	B	10	Total O 10 10	0	0
4	C	8	Total O 8 8	0	0

Continued on next page...

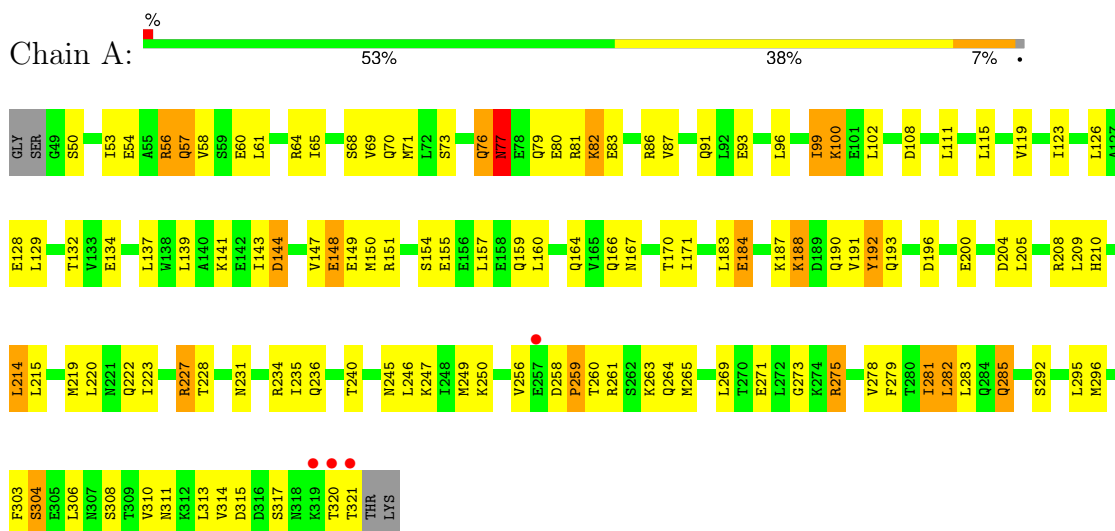
*Continued from previous page...*

<b>Mol</b>	<b>Chain</b>	<b>Residues</b>	<b>Atoms</b>	<b>ZeroOcc</b>	<b>AltConf</b>
4	D	9	Total O 9 9	0	0

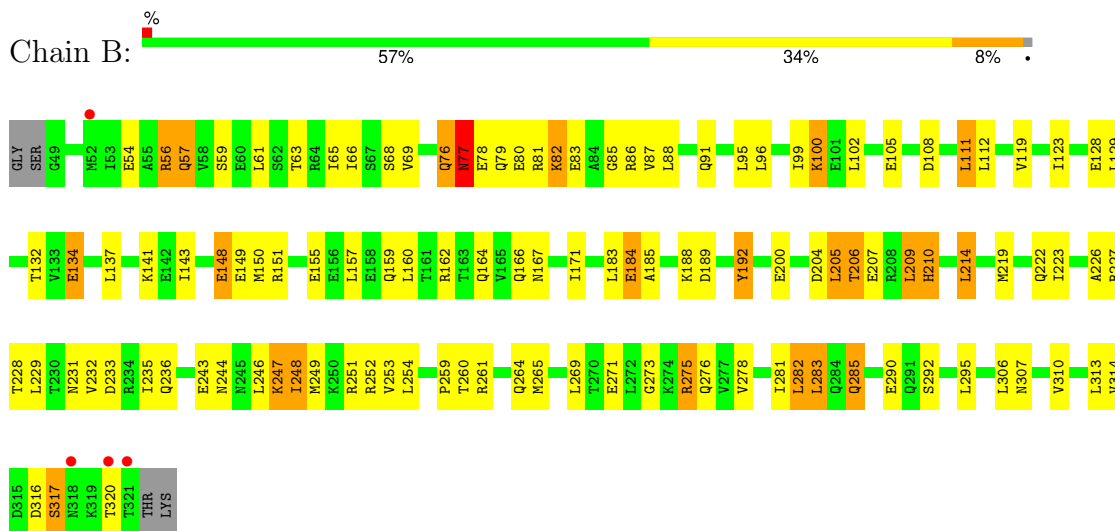
### 3 Residue-property plots

These plots are drawn for all protein, RNA, DNA and oligosaccharide chains in the entry. The first graphic for a chain summarises the proportions of the various outlier classes displayed in the second graphic. The second graphic shows the sequence view annotated by issues in geometry and electron density. Residues are color-coded according to the number of geometric quality criteria for which they contain at least one outlier: green = 0, yellow = 1, orange = 2 and red = 3 or more. A red dot above a residue indicates a poor fit to the electron density ( $RSRZ > 2$ ). Stretches of 2 or more consecutive residues without any outlier are shown as a green connector. Residues present in the sample, but not in the model, are shown in grey.

- Molecule 1: Sensor protein TorS

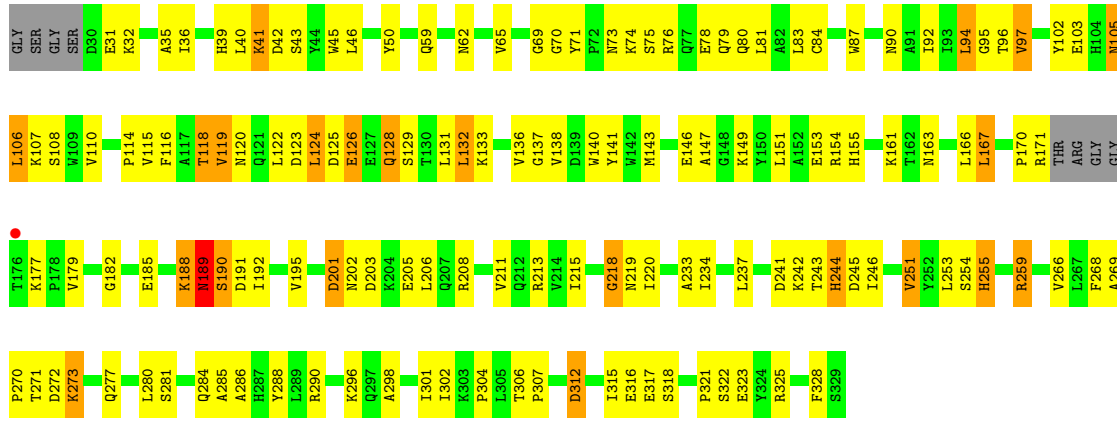


- Molecule 1: Sensor protein TorS

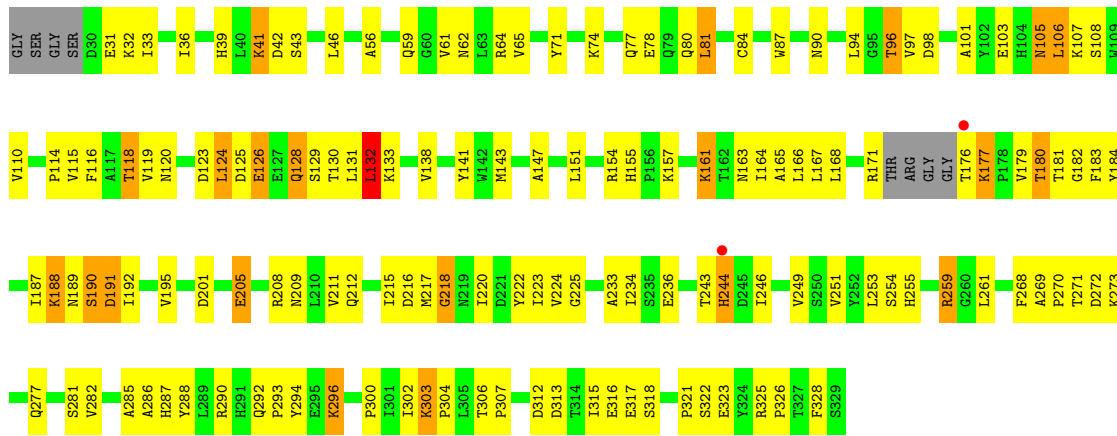


- Molecule 2: Periplasmic protein TorT





● Molecule 2: Periplasmic protein TorT



## 4 Data and refinement statistics

Property	Value	Source
Space group	P 21 21 21	Depositor
Cell constants a, b, c, $\alpha$ , $\beta$ , $\gamma$	78.39Å 127.67Å 306.53Å 90.00° 90.00° 90.00°	Depositor
Resolution (Å)	19.96 – 2.95 24.87 – 2.95	Depositor EDS
% Data completeness (in resolution range)	97.9 (19.96-2.95) 98.0 (24.87-2.95)	Depositor EDS
$R_{merge}$	0.08	Depositor
$R_{sym}$	0.10	Depositor
$\langle I/\sigma(I) \rangle$ <sup>1</sup>	1.96 (at 2.94Å)	Xtrriage
Refinement program	CNS 1.2	Depositor
R, $R_{free}$	0.226 , 0.249 0.218 , 0.239	Depositor DCC
$R_{free}$ test set	3269 reflections (5.08%)	wwPDB-VP
Wilson B-factor (Å <sup>2</sup> )	55.3	Xtrriage
Anisotropy	0.302	Xtrriage
Bulk solvent $k_{sol}$ (e/Å <sup>3</sup> ), $B_{sol}$ (Å <sup>2</sup> )	0.31 , 30.4	EDS
L-test for twinning <sup>2</sup>	$\langle  L  \rangle = 0.48$ , $\langle L^2 \rangle = 0.31$	Xtrriage
Estimated twinning fraction	No twinning to report.	Xtrriage
$F_o, F_c$ correlation	0.92	EDS
Total number of atoms	9119	wwPDB-VP
Average B, all atoms (Å <sup>2</sup> )	55.0	wwPDB-VP

Xtrriage's analysis on translational NCS is as follows: *The largest off-origin peak in the Patterson function is 6.58% of the height of the origin peak. No significant pseudotranslation is detected.*

<sup>1</sup>Intensities estimated from amplitudes.

<sup>2</sup>Theoretical values of  $\langle |L| \rangle$ ,  $\langle L^2 \rangle$  for acentric reflections are 0.5, 0.333 respectively for untwinned datasets, and 0.375, 0.2 for perfectly twinned datasets.



## 5 Model quality

### 5.1 Standard geometry

Bond lengths and bond angles in the following residue types are not validated in this section: IPA

The Z score for a bond length (or angle) is the number of standard deviations the observed value is removed from the expected value. A bond length (or angle) with  $|Z| > 5$  is considered an outlier worth inspection. RMSZ is the root-mean-square of all Z scores of the bond lengths (or angles).

Mol	Chain	Bond lengths		Bond angles	
		RMSZ	# Z  >5	RMSZ	# Z  >5
1	A	0.42	1/2208 (0.0%)	0.62	0/2978
1	B	0.44	1/2208 (0.0%)	0.64	0/2978
2	C	0.39	0/2396	0.69	2/3253 (0.1%)
2	D	0.39	0/2396	0.69	1/3253 (0.0%)
All	All	0.41	2/9208 (0.0%)	0.66	3/12462 (0.0%)

All (2) bond length outliers are listed below:

Mol	Chain	Res	Type	Atoms	Z	Observed(Å)	Ideal(Å)
1	B	184	GLU	CD-OE2	7.82	1.34	1.25
1	A	184	GLU	CD-OE2	7.75	1.34	1.25

All (3) bond angle outliers are listed below:

Mol	Chain	Res	Type	Atoms	Z	Observed(°)	Ideal(°)
2	C	218	GLY	N-CA-C	6.87	130.27	113.10
2	C	255	HIS	N-CA-C	-5.67	95.68	111.00
2	D	255	HIS	N-CA-C	-5.55	96.03	111.00

There are no chirality outliers.

There are no planarity outliers.

### 5.2 Too-close contacts

In the following table, the Non-H and H(model) columns list the number of non-hydrogen atoms and hydrogen atoms in the chain respectively. The H(added) column lists the number of hydrogen atoms added and optimized by MolProbity. The Clashes column lists the number of clashes within the asymmetric unit, whereas Symm-Clashes lists symmetry-related clashes.

Mol	Chain	Non-H	H(model)	H(added)	Clashes	Symm-Clashes
1	A	2193	0	2234	121	0
1	B	2193	0	2234	123	0
2	C	2342	0	2303	136	0
2	D	2342	0	2303	138	0
3	C	4	0	8	2	0
3	D	4	0	8	0	0
4	A	14	0	0	0	0
4	B	10	0	0	2	0
4	C	8	0	0	1	0
4	D	9	0	0	1	0
All	All	9119	0	9090	497	0

The all-atom clashscore is defined as the number of clashes found per 1000 atoms (including hydrogen atoms). The all-atom clashscore for this structure is 27.

All (497) close contacts within the same asymmetric unit are listed below, sorted by their clash magnitude.

Atom-1	Atom-2	Interatomic distance (Å)	Clash overlap (Å)
2:D:271:THR:HG22	2:D:273:LYS:H	1.14	1.07
1:B:56:ARG:HH11	1:B:56:ARG:HB3	1.19	1.06
1:B:100:LYS:HE3	1:B:100:LYS:HA	1.39	1.02
2:C:259:ARG:HG3	2:C:259:ARG:HH11	1.20	1.01
1:A:81:ARG:HH12	1:A:134:GLU:HB3	1.22	1.01
1:A:111:LEU:HD23	1:A:313:LEU:HD12	1.46	0.98
2:D:259:ARG:HG3	2:D:259:ARG:HH11	1.29	0.95
1:A:77:ASN:HD21	1:A:80:GLU:H	1.10	0.93
1:A:82:LYS:HA	1:A:82:LYS:HE2	1.49	0.93
2:C:32:LYS:H	2:C:90:ASN:ND2	1.68	0.91
2:D:107:LYS:HG3	2:D:128:GLN:HE21	1.34	0.91
1:B:81:ARG:HH12	1:B:134:GLU:HB2	1.35	0.91
2:C:32:LYS:H	2:C:90:ASN:HD22	1.09	0.91
1:A:147:VAL:HG11	1:A:227:ARG:HB3	1.53	0.90
1:B:76:GLN:HA	1:B:137:LEU:HD11	1.55	0.89
2:C:107:LYS:HG3	2:C:128:GLN:HE21	1.38	0.88
1:B:82:LYS:HE2	1:B:82:LYS:HA	1.55	0.88
1:B:56:ARG:HB3	1:B:56:ARG:NH1	1.90	0.87
1:B:77:ASN:HD21	1:B:80:GLU:H	1.24	0.86
1:B:275:ARG:HG3	1:B:275:ARG:HH11	1.38	0.85
1:A:81:ARG:HH12	1:A:134:GLU:CB	1.88	0.85
1:A:81:ARG:NH1	1:A:134:GLU:HB3	1.91	0.84
2:C:151:LEU:HB3	2:C:192:ILE:CD1	2.07	0.84
2:C:271:THR:CG2	2:C:273:LYS:H	1.92	0.82

*Continued on next page...*

*Continued from previous page...*

Atom-1	Atom-2	Interatomic distance (Å)	Clash overlap (Å)
1:B:227:ARG:HG3	1:B:228:THR:H	1.43	0.82
2:D:32:LYS:H	2:D:90:ASN:HD22	1.24	0.81
1:A:143:ILE:HD13	1:A:282:LEU:HD13	1.62	0.81
1:A:261:ARG:HG3	1:A:261:ARG:HH11	1.44	0.81
1:A:167:ASN:ND2	1:A:261:ARG:HH22	1.79	0.81
1:A:77:ASN:HD21	1:A:80:GLU:N	1.79	0.80
1:B:56:ARG:HH11	1:B:56:ARG:CB	1.94	0.80
1:B:102:LEU:HG	1:B:313:LEU:HD23	1.64	0.80
2:D:103:GLU:HG3	2:D:124:LEU:HA	1.62	0.80
1:A:275:ARG:HG3	1:A:275:ARG:HH11	1.46	0.79
1:B:275:ARG:HH11	1:B:275:ARG:CG	1.95	0.78
1:A:149:GLU:CD	1:A:275:ARG:HH12	1.85	0.78
2:C:171:ARG:HB3	2:C:171:ARG:CZ	2.13	0.78
1:B:261:ARG:HH11	1:B:261:ARG:HG3	1.47	0.78
2:D:271:THR:HG21	2:D:318:SER:OG	1.83	0.77
1:B:143:ILE:HD13	1:B:282:LEU:HD22	1.64	0.77
2:D:107:LYS:HG3	2:D:128:GLN:NE2	1.99	0.77
1:B:316:ASP:HB3	4:B:7:HOH:O	1.86	0.75
2:C:32:LYS:N	2:C:90:ASN:HD22	1.84	0.75
1:B:111:LEU:HD23	1:B:313:LEU:HD12	1.69	0.74
2:C:65:VAL:HG22	2:C:328:PHE:HA	1.69	0.74
2:D:65:VAL:HG22	2:D:328:PHE:HA	1.69	0.74
1:A:183:LEU:HD12	1:B:192:TYR:CD2	2.22	0.74
2:D:32:LYS:H	2:D:90:ASN:ND2	1.85	0.74
1:B:251:ARG:HD2	2:D:209:ASN:HD21	1.52	0.73
1:B:149:GLU:CD	1:B:275:ARG:HH12	1.91	0.73
2:C:271:THR:HG21	2:C:318:SER:OG	1.89	0.73
1:A:77:ASN:ND2	1:A:80:GLU:H	1.85	0.72
1:A:234:ARG:HG3	1:A:234:ARG:HH11	1.54	0.72
1:B:271:GLU:O	1:B:275:ARG:HD3	1.88	0.72
2:C:118:THR:HG23	2:C:281:SER:OG	1.90	0.72
2:D:271:THR:HG22	2:D:273:LYS:N	1.97	0.72
1:B:59:SER:HA	1:B:307:ASN:HD21	1.51	0.72
2:C:39:HIS:HD2	2:C:41:LYS:H	1.38	0.72
2:C:259:ARG:HG3	2:C:259:ARG:NH1	1.96	0.72
1:B:61:LEU:O	1:B:65:ILE:HG12	1.90	0.71
2:D:151:LEU:HB3	2:D:192:ILE:CD1	2.20	0.71
1:A:167:ASN:HD21	1:A:261:ARG:HH22	1.39	0.70
1:A:304:SER:HA	1:B:63:THR:HG21	1.73	0.70
2:D:312:ASP:O	2:D:316:GLU:HG2	1.91	0.70
2:C:325:ARG:HD2	4:C:3:HOH:O	1.91	0.70

*Continued on next page...*

*Continued from previous page...*

Atom-1	Atom-2	Interatomic distance (Å)	Clash overlap (Å)
1:A:275:ARG:HH11	1:A:275:ARG:CG	2.04	0.69
2:C:143:MET:HE3	2:C:272:ASP:HB3	1.72	0.69
1:B:86:ARG:HH21	1:B:87:VAL:HG12	1.56	0.69
2:C:143:MET:CE	2:C:272:ASP:HB3	2.23	0.69
2:C:312:ASP:O	2:C:316:GLU:HG2	1.92	0.69
1:A:271:GLU:O	1:A:275:ARG:HD3	1.94	0.68
1:A:54:GLU:O	1:A:57:GLN:HB2	1.93	0.68
2:C:116:PHE:CZ	2:C:285:ALA:HA	2.29	0.68
2:D:259:ARG:HG3	2:D:259:ARG:NH1	2.04	0.68
1:A:219:MET:HA	1:A:222:GLN:HE21	1.59	0.67
2:C:271:THR:HG22	2:C:273:LYS:H	1.58	0.67
2:D:32:LYS:HG2	2:D:62:ASN:HD22	1.58	0.67
1:B:96:LEU:HD21	1:B:123:ILE:HD11	1.75	0.67
2:D:143:MET:CE	2:D:270:PRO:HB2	2.24	0.67
1:B:96:LEU:O	1:B:99:ILE:HG22	1.93	0.67
1:A:234:ARG:HG3	1:A:234:ARG:NH1	2.09	0.66
2:D:105:ASN:O	2:D:107:LYS:N	2.28	0.66
2:D:220:ILE:N	2:D:220:ILE:HD12	2.11	0.66
2:C:237:LEU:HD21	2:C:246:ILE:HD12	1.78	0.66
2:C:271:THR:HG23	2:C:273:LYS:H	1.60	0.66
1:A:192:TYR:CD2	1:B:183:LEU:HD12	2.31	0.65
1:A:249:MET:HG2	1:A:269:LEU:HD11	1.78	0.65
1:A:86:ARG:HH21	1:A:87:VAL:HG12	1.61	0.65
2:C:107:LYS:HG2	2:C:131:LEU:HD11	1.78	0.65
2:C:147:ALA:HA	2:C:268:PHE:CE2	2.31	0.65
1:B:167:ASN:ND2	1:B:261:ARG:HH22	1.94	0.65
1:B:227:ARG:HG3	1:B:228:THR:N	2.11	0.65
1:B:86:ARG:NH2	1:B:87:VAL:HG12	2.10	0.65
2:C:211:VAL:HG11	2:C:233:ALA:HA	1.79	0.65
1:B:128:GLU:HG2	1:B:295:LEU:HD21	1.78	0.64
2:D:143:MET:HE2	2:D:270:PRO:HB2	1.80	0.64
2:C:106:LEU:HD21	2:C:115:VAL:HG21	1.79	0.64
2:D:46:LEU:HD23	2:D:326:PRO:HG3	1.80	0.64
2:C:69:GLY:HA3	2:C:73:ASN:ND2	2.12	0.64
1:A:61:LEU:O	1:A:65:ILE:HG12	1.98	0.63
1:A:81:ARG:HD2	1:A:81:ARG:C	2.18	0.63
2:D:125:ASP:OD1	2:D:128:GLN:HB2	1.99	0.63
2:D:74:LYS:O	2:D:78:GLU:HG3	1.98	0.63
2:D:118:THR:HG23	2:D:281:SER:OG	1.97	0.62
1:A:54:GLU:HB3	1:A:102:LEU:HD11	1.81	0.62
1:B:129:LEU:HA	1:B:295:LEU:HD23	1.82	0.62

*Continued on next page...*

*Continued from previous page...*

Atom-1	Atom-2	Interatomic distance (Å)	Clash overlap (Å)
1:A:231:ASN:O	1:A:235:ILE:HG13	1.98	0.62
2:C:259:ARG:HH11	2:C:259:ARG:CG	2.03	0.62
1:A:260:THR:HG22	1:A:264:GLN:HE21	1.64	0.62
2:C:92:ILE:HB	2:C:115:VAL:HG12	1.82	0.62
2:C:59:GLN:HG2	2:C:286:ALA:CB	2.30	0.62
2:D:43:SER:HB2	4:D:12:HOH:O	1.99	0.61
1:A:132:THR:HG21	1:A:292:SER:HB3	1.82	0.61
2:C:171:ARG:HB3	2:C:171:ARG:NH1	2.14	0.61
1:A:150:MET:HB3	1:A:223:ILE:HD13	1.81	0.61
1:B:150:MET:HB3	1:B:223:ILE:HD13	1.82	0.61
2:D:31:GLU:OE1	2:D:31:GLU:N	2.29	0.61
2:D:46:LEU:CD2	2:D:326:PRO:HG3	2.30	0.61
2:D:36:ILE:HD12	2:D:81:LEU:HD13	1.83	0.60
2:C:143:MET:HE1	2:C:302:ILE:HG23	1.81	0.60
1:B:231:ASN:O	1:B:235:ILE:HG13	2.02	0.60
1:B:244:ASN:O	1:B:248:ILE:HG22	2.01	0.60
1:B:100:LYS:HA	1:B:100:LYS:CE	2.18	0.60
2:C:151:LEU:HB3	2:C:192:ILE:HD11	1.82	0.60
2:C:36:ILE:HD12	2:C:81:LEU:CD1	2.32	0.59
1:A:82:LYS:HE2	1:A:82:LYS:CA	2.28	0.59
2:D:105:ASN:HB3	2:D:108:SER:OG	2.02	0.59
2:D:71:TYR:HA	2:D:97:VAL:CG2	2.33	0.59
1:B:83:GLU:O	1:B:87:VAL:HG13	2.03	0.59
2:C:105:ASN:HB3	2:C:108:SER:OG	2.02	0.59
1:A:236:GLN:O	1:A:240:THR:HG23	2.02	0.59
1:B:108:ASP:OD2	1:B:111:LEU:HB2	2.02	0.59
1:B:77:ASN:HD21	1:B:80:GLU:N	1.95	0.58
1:B:273:GLY:O	1:B:276:GLN:HB2	2.03	0.58
2:D:188:LYS:NZ	2:D:189:ASN:HB2	2.18	0.58
1:A:82:LYS:HA	1:A:82:LYS:CE	2.29	0.58
2:C:105:ASN:O	2:C:107:LYS:N	2.35	0.58
2:C:124:LEU:HD11	2:C:132:LEU:HD23	1.84	0.58
2:D:116:PHE:CZ	2:D:285:ALA:HA	2.37	0.58
2:D:243:THR:O	2:D:244:HIS:HB2	2.03	0.58
1:A:205:LEU:HD23	1:A:209:LEU:HD23	1.85	0.58
2:D:151:LEU:HB3	2:D:192:ILE:HD13	1.85	0.58
1:B:310:VAL:O	1:B:314:VAL:HG23	2.03	0.58
2:C:147:ALA:HA	2:C:268:PHE:HE2	1.68	0.58
1:A:261:ARG:HG3	1:A:261:ARG:NH1	2.11	0.58
1:B:76:GLN:O	1:B:77:ASN:HB3	2.03	0.58
1:B:155:GLU:O	1:B:159:GLN:HG3	2.04	0.58

*Continued on next page...*

*Continued from previous page...*

Atom-1	Atom-2	Interatomic distance (Å)	Clash overlap (Å)
1:B:219:MET:HA	1:B:222:GLN:HE21	1.68	0.58
2:C:106:LEU:O	2:C:110:VAL:HG22	2.04	0.58
2:D:32:LYS:N	2:D:90:ASN:HD22	2.00	0.57
1:B:314:VAL:O	1:B:317:SER:HB3	2.04	0.57
1:B:275:ARG:CG	1:B:275:ARG:NH1	2.59	0.57
2:C:179:VAL:HG11	2:C:251:VAL:HG11	1.86	0.57
2:D:39:HIS:HD2	2:D:41:LYS:H	1.52	0.57
1:B:261:ARG:HG3	1:B:261:ARG:NH1	2.17	0.57
2:D:106:LEU:HD21	2:D:115:VAL:HG21	1.87	0.57
2:C:163:ASN:HB3	2:C:195:VAL:CG2	2.35	0.57
1:B:77:ASN:HD22	1:B:78:GLU:N	2.03	0.56
1:B:275:ARG:HD3	1:B:275:ARG:H	1.70	0.56
2:C:126:GLU:CD	2:C:126:GLU:H	2.09	0.56
2:D:166:LEU:HD23	2:D:224:VAL:HB	1.86	0.56
2:D:103:GLU:HA	2:D:124:LEU:HB3	1.87	0.56
1:B:81:ARG:HH12	1:B:134:GLU:CB	2.13	0.56
2:C:43:SER:OG	2:C:255:HIS:ND1	2.33	0.56
2:D:180:THR:HG22	2:D:184:TYR:CE1	2.41	0.56
1:A:315:ASP:C	1:A:317:SER:N	2.59	0.56
2:C:32:LYS:HD2	2:C:87:TRP:CZ2	2.41	0.55
2:D:176:THR:O	2:D:177:LYS:HB3	2.07	0.55
1:B:68:SER:HB2	1:B:88:LEU:HD13	1.88	0.55
1:A:79:GLN:OE1	1:A:79:GLN:HA	2.06	0.55
1:A:76:GLN:O	1:A:77:ASN:HB3	2.07	0.55
1:A:60:GLU:OE1	1:A:64:ARG:HD3	2.06	0.55
1:B:232:VAL:O	1:B:236:GLN:HG2	2.07	0.55
2:C:151:LEU:HB3	2:C:192:ILE:HD13	1.87	0.55
1:B:167:ASN:HD21	1:B:261:ARG:HH22	1.53	0.55
2:D:143:MET:HE3	2:D:302:ILE:HD13	1.89	0.55
2:C:119:VAL:HG12	2:C:120:ASN:ND2	2.22	0.55
2:C:213:ARG:HG3	2:C:213:ARG:HH11	1.71	0.55
2:D:39:HIS:NE2	2:D:42:ASP:HB2	2.21	0.55
1:A:155:GLU:O	1:A:159:GLN:HG3	2.07	0.55
1:B:200:GLU:HG2	2:D:234:ILE:HG22	1.89	0.55
2:D:151:LEU:HB3	2:D:192:ILE:HD11	1.88	0.55
2:C:126:GLU:CD	2:C:126:GLU:N	2.60	0.54
2:D:77:GLN:HA	2:D:80:GLN:HE21	1.72	0.54
2:C:74:LYS:HA	2:C:97:VAL:HG11	1.89	0.54
1:A:166:GLN:O	1:A:170:THR:HG23	2.07	0.54
1:B:87:VAL:HG23	1:B:91:GLN:HE21	1.72	0.54
2:C:31:GLU:OE2	2:C:290:ARG:NH1	2.40	0.54

*Continued on next page...*

*Continued from previous page...*

Atom-1	Atom-2	Interatomic distance (Å)	Clash overlap (Å)
2:C:253:LEU:HG	2:C:254:SER:N	2.22	0.54
1:B:243:GLU:HG3	1:B:247:LYS:HE3	1.89	0.54
1:A:246:LEU:HD21	1:A:273:GLY:HA2	1.89	0.54
1:A:275:ARG:CG	1:A:275:ARG:NH1	2.69	0.54
1:A:314:VAL:O	1:A:317:SER:HB3	2.08	0.54
2:D:143:MET:HE3	2:D:302:ILE:HG12	1.90	0.54
1:A:111:LEU:CD2	1:A:313:LEU:HD12	2.30	0.54
1:B:243:GLU:CG	1:B:247:LYS:HE3	2.38	0.54
2:C:149:LYS:O	2:C:153:GLU:HG3	2.08	0.53
2:C:107:LYS:HG3	2:C:128:GLN:NE2	2.17	0.53
2:D:315:ILE:HD12	2:D:315:ILE:C	2.29	0.53
2:D:36:ILE:CD1	2:D:81:LEU:HD13	2.39	0.53
2:D:171:ARG:CZ	2:D:171:ARG:HB3	2.37	0.53
2:D:216:ASP:C	2:D:218:GLY:H	2.12	0.53
2:D:168:LEU:HD23	2:D:225:GLY:HA2	1.90	0.53
2:D:118:THR:O	2:D:120:ASN:N	2.41	0.53
2:D:165:ALA:HB2	2:D:220:ILE:HG12	1.90	0.53
2:D:180:THR:HG22	2:D:184:TYR:HE1	1.74	0.53
2:C:185:GLU:O	2:C:188:LYS:HB2	2.09	0.53
2:D:143:MET:HE3	2:D:302:ILE:CD1	2.39	0.53
1:A:160:LEU:HD23	1:A:265:MET:HG2	1.91	0.52
2:C:189:ASN:O	2:C:190:SER:HB3	2.09	0.52
2:C:243:THR:O	2:C:244:HIS:HB2	2.09	0.52
2:C:243:THR:O	2:C:244:HIS:CB	2.56	0.52
2:D:163:ASN:HB3	2:D:195:VAL:CG2	2.40	0.52
2:D:243:THR:O	2:D:244:HIS:CB	2.57	0.52
2:C:170:PRO:HG3	2:C:201:ASP:HA	1.92	0.52
1:B:100:LYS:NZ	4:B:4:HOH:O	2.38	0.52
2:C:143:MET:HE3	2:C:272:ASP:CB	2.40	0.52
1:A:187:LYS:HD3	1:A:190:GLN:NE2	2.25	0.52
1:B:160:LEU:HD23	1:B:265:MET:HG2	1.91	0.52
2:C:107:LYS:CG	2:C:128:GLN:HE21	2.17	0.52
1:B:65:ILE:CD1	1:B:91:GLN:HB3	2.40	0.51
1:B:307:ASN:HA	1:B:310:VAL:HG22	1.92	0.51
1:A:315:ASP:C	1:A:317:SER:H	2.13	0.51
2:C:118:THR:O	2:C:120:ASN:N	2.38	0.51
1:A:205:LEU:O	1:A:209:LEU:HD23	2.11	0.51
2:C:124:LEU:HD12	2:C:124:LEU:O	2.11	0.51
2:C:259:ARG:NH1	2:C:259:ARG:CG	2.66	0.51
1:B:282:LEU:O	1:B:285:GLN:HB3	2.09	0.51
2:D:126:GLU:CD	2:D:126:GLU:H	2.13	0.51

*Continued on next page...*

*Continued from previous page...*

Atom-1	Atom-2	Interatomic distance (Å)	Clash overlap (Å)
2:D:126:GLU:CD	2:D:126:GLU:N	2.63	0.51
2:D:106:LEU:HB3	2:D:128:GLN:HG3	1.92	0.51
1:A:96:LEU:HD21	1:A:123:ILE:HD11	1.93	0.51
1:A:214:LEU:HD22	1:B:214:LEU:CD2	2.41	0.51
1:B:77:ASN:O	1:B:78:GLU:HB3	2.11	0.51
1:B:81:ARG:C	1:B:83:GLU:H	2.14	0.51
2:C:137:GLY:HA2	2:C:277:GLN:NE2	2.26	0.51
1:B:82:LYS:HA	1:B:82:LYS:CE	2.32	0.50
2:C:138:VAL:HG21	2:C:272:ASP:HB2	1.92	0.50
2:C:45:TRP:HE1	3:C:2:IPA:H11	1.76	0.50
2:C:219:ASN:C	2:C:220:ILE:HD12	2.31	0.50
1:A:235:ILE:HG21	1:A:283:LEU:CD2	2.41	0.50
1:A:275:ARG:HD3	1:A:275:ARG:H	1.76	0.50
2:D:143:MET:HE3	2:D:302:ILE:CG1	2.40	0.50
1:B:148:GLU:OE1	1:B:151:ARG:NH1	2.45	0.50
2:D:220:ILE:N	2:D:220:ILE:CD1	2.74	0.50
1:A:77:ASN:ND2	1:A:79:GLN:H	2.10	0.50
2:C:76:ARG:O	2:C:80:GLN:HG3	2.12	0.50
2:C:163:ASN:HB3	2:C:195:VAL:HG23	1.94	0.50
1:B:260:THR:O	1:B:264:GLN:HG3	2.11	0.49
2:C:106:LEU:HD23	2:C:131:LEU:HD12	1.94	0.49
1:A:215:LEU:HG	1:A:249:MET:HE2	1.94	0.49
1:A:205:LEU:HD23	1:A:209:LEU:CD2	2.41	0.49
2:D:31:GLU:OE2	2:D:290:ARG:NH1	2.44	0.49
2:C:315:ILE:C	2:C:315:ILE:HD12	2.32	0.49
2:D:273:LYS:HD2	2:D:317:GLU:HB2	1.94	0.49
2:D:290:ARG:HD2	2:D:292:GLN:OE1	2.12	0.49
2:D:141:TYR:CE1	2:D:182:GLY:HA2	2.48	0.49
2:D:268:PHE:HE1	2:D:304:PRO:HB2	1.77	0.49
2:C:273:LYS:HE2	2:C:317:GLU:OE1	2.12	0.49
2:C:170:PRO:O	2:C:171:ARG:HB2	2.12	0.49
2:C:36:ILE:HD11	2:C:84:CYS:SG	2.53	0.49
2:D:71:TYR:HA	2:D:97:VAL:HG22	1.94	0.49
2:D:179:VAL:HG11	2:D:251:VAL:HG11	1.95	0.49
2:D:323:GLU:OE2	2:D:323:GLU:HA	2.12	0.49
2:C:76:ARG:HG2	2:C:76:ARG:HH11	1.77	0.49
2:C:103:GLU:HA	2:C:124:LEU:HB3	1.95	0.49
1:B:65:ILE:HD11	1:B:91:GLN:HB3	1.95	0.48
1:B:77:ASN:ND2	1:B:80:GLU:H	2.02	0.48
1:B:200:GLU:HG3	2:D:259:ARG:HH22	1.78	0.48
1:B:205:LEU:O	1:B:209:LEU:HD23	2.13	0.48

*Continued on next page...*



*Continued from previous page...*

Atom-1	Atom-2	Interatomic distance (Å)	Clash overlap (Å)
2:C:323:GLU:OE2	2:C:323:GLU:HA	2.12	0.48
1:A:192:TYR:OH	1:B:184:GLU:HG3	2.13	0.48
2:C:75:SER:O	2:C:79:GLN:HG3	2.14	0.48
2:C:71:TYR:O	2:C:97:VAL:HG22	2.13	0.48
2:C:71:TYR:HA	2:C:97:VAL:HG22	1.94	0.48
1:B:129:LEU:CA	1:B:295:LEU:HD23	2.43	0.48
2:C:36:ILE:HD12	2:C:81:LEU:HD12	1.95	0.48
2:D:74:LYS:HA	2:D:97:VAL:HG11	1.95	0.48
2:D:138:VAL:HG21	2:D:272:ASP:HB2	1.96	0.48
2:D:211:VAL:HG11	2:D:233:ALA:HA	1.96	0.48
2:D:306:THR:HB	2:D:307:PRO:HD2	1.96	0.48
1:A:68:SER:OG	1:A:91:GLN:NE2	2.43	0.48
1:B:77:ASN:O	1:B:78:GLU:CB	2.61	0.48
1:B:132:THR:HG21	1:B:292:SER:HB3	1.96	0.48
1:B:253:VAL:HG23	1:B:254:LEU:N	2.29	0.48
2:C:94:LEU:HD22	2:C:95:GLY:N	2.28	0.48
1:A:119:VAL:O	1:A:123:ILE:HG13	2.14	0.48
1:A:56:ARG:HG2	1:A:56:ARG:HH11	1.79	0.47
2:D:143:MET:HE1	2:D:270:PRO:HB2	1.95	0.47
2:D:313:ASP:O	2:D:317:GLU:HG3	2.13	0.47
1:A:227:ARG:HD3	1:A:228:THR:HG23	1.95	0.47
1:B:260:THR:HG21	2:C:328:PHE:CG	2.49	0.47
1:B:148:GLU:CD	1:B:151:ARG:HH12	2.17	0.47
1:B:192:TYR:O	1:B:192:TYR:CD1	2.67	0.47
1:A:304:SER:CA	1:B:63:THR:HG21	2.44	0.47
1:A:227:ARG:HH11	1:A:227:ARG:HG2	1.79	0.47
2:D:71:TYR:O	2:D:97:VAL:HG22	2.14	0.47
1:A:93:GLU:OE1	1:A:93:GLU:HA	2.15	0.47
1:B:132:THR:HG21	1:B:292:SER:CB	2.45	0.47
2:C:71:TYR:OH	3:C:2:IPA:H12	2.14	0.47
1:A:76:GLN:HA	1:A:137:LEU:HD11	1.97	0.47
2:C:39:HIS:HB3	2:C:70:GLY:HA2	1.96	0.47
1:A:132:THR:CG2	1:A:292:SER:HB3	2.43	0.47
1:A:167:ASN:HD21	1:A:261:ARG:NH2	2.08	0.47
2:C:71:TYR:HA	2:C:97:VAL:CG2	2.45	0.47
1:B:105:GLU:OE1	1:B:105:GLU:HA	2.14	0.47
2:D:188:LYS:HZ1	2:D:189:ASN:HB2	1.80	0.47
2:D:56:ALA:HA	2:D:282:VAL:HG11	1.96	0.47
1:A:149:GLU:CD	1:A:275:ARG:NH1	2.62	0.46
1:A:50:SER:HA	1:A:53:ILE:HD12	1.97	0.46
2:C:43:SER:HG	2:C:255:HIS:HD1	1.61	0.46

*Continued on next page...*

*Continued from previous page...*

Atom-1	Atom-2	Interatomic distance (Å)	Clash overlap (Å)
2:C:74:LYS:O	2:C:78:GLU:HG3	2.16	0.46
2:C:234:ILE:HD11	2:C:266:VAL:CG2	2.44	0.46
1:A:54:GLU:HB3	1:A:102:LEU:CD1	2.44	0.46
1:A:128:GLU:HG2	1:A:295:LEU:HD21	1.97	0.46
2:C:116:PHE:CD1	2:C:116:PHE:N	2.83	0.46
2:C:103:GLU:HG3	2:C:124:LEU:HA	1.98	0.46
1:A:164:GLN:HG2	1:A:261:ARG:NH1	2.30	0.46
1:A:56:ARG:HG2	1:A:56:ARG:NH1	2.31	0.46
1:A:139:LEU:HD13	1:A:285:GLN:HA	1.98	0.46
1:B:57:GLN:HE21	1:B:57:GLN:CA	2.28	0.46
1:B:171:ILE:CD1	2:C:325:ARG:HD3	2.45	0.46
2:C:105:ASN:O	2:C:128:GLN:NE2	2.49	0.46
1:A:77:ASN:OD1	1:A:80:GLU:HG3	2.15	0.46
1:B:77:ASN:HD22	1:B:77:ASN:N	2.14	0.46
1:B:275:ARG:N	1:B:275:ARG:CD	2.79	0.46
2:D:59:GLN:O	2:D:290:ARG:NH2	2.49	0.46
1:B:77:ASN:ND2	1:B:79:GLN:H	2.14	0.46
1:B:243:GLU:O	1:B:247:LYS:HE2	2.15	0.46
2:C:105:ASN:HB2	2:C:106:LEU:H	1.44	0.46
1:A:86:ARG:NH2	1:A:87:VAL:HG12	2.29	0.46
1:A:311:ASN:C	1:A:313:LEU:N	2.68	0.46
1:A:204:ASP:OD1	2:C:208:ARG:NH2	2.49	0.45
2:D:131:LEU:O	2:D:133:LYS:HG2	2.16	0.45
2:D:143:MET:HE2	2:D:143:MET:HA	1.99	0.45
1:A:129:LEU:HA	1:A:295:LEU:HD23	1.99	0.45
2:D:59:GLN:HG2	2:D:286:ALA:CB	2.46	0.45
2:D:128:GLN:C	2:D:130:THR:H	2.18	0.45
2:D:209:ASN:O	2:D:212:GLN:HB2	2.16	0.45
1:B:79:GLN:OE1	1:B:79:GLN:HA	2.16	0.45
2:C:253:LEU:HD22	2:C:271:THR:OG1	2.16	0.45
2:D:224:VAL:HA	2:D:249:VAL:O	2.17	0.45
2:C:163:ASN:HB3	2:C:195:VAL:HG21	1.99	0.45
1:A:77:ASN:N	1:A:77:ASN:HD22	2.14	0.45
1:A:246:LEU:O	1:A:250:LYS:HG3	2.17	0.45
1:B:219:MET:HE1	1:B:246:LEU:HA	1.99	0.45
2:D:107:LYS:CG	2:D:128:GLN:NE2	2.76	0.45
2:D:220:ILE:CD1	2:D:220:ILE:H	2.29	0.45
1:A:321:THR:HG22	1:A:321:THR:O	2.16	0.45
1:A:320:THR:HG22	1:A:320:THR:O	2.17	0.45
2:C:155:HIS:O	2:C:190:SER:O	2.33	0.45
2:D:65:VAL:HG23	2:D:328:PHE:CD2	2.52	0.45

*Continued on next page...*

*Continued from previous page...*

Atom-1	Atom-2	Interatomic distance (Å)	Clash overlap (Å)
2:D:163:ASN:HB3	2:D:195:VAL:HG23	1.98	0.45
1:A:306:LEU:O	1:A:310:VAL:HG13	2.17	0.45
1:A:315:ASP:O	1:A:317:SER:N	2.50	0.45
2:D:115:VAL:HG22	2:D:131:LEU:HB2	1.99	0.45
2:D:277:GLN:HG2	2:D:300:PRO:HG3	1.99	0.45
1:A:154:SER:HB2	1:A:223:ILE:HD12	1.99	0.44
1:A:227:ARG:CZ	1:A:227:ARG:HB2	2.46	0.44
1:A:278:VAL:HG13	1:A:279:PHE:N	2.32	0.44
2:C:141:TYR:CE1	2:C:182:GLY:HA2	2.52	0.44
2:D:183:PHE:O	2:D:187:ILE:HG12	2.17	0.44
2:D:253:LEU:HG	2:D:254:SER:N	2.33	0.44
2:D:177:LYS:O	2:D:181:THR:HG23	2.17	0.44
2:C:211:VAL:O	2:C:215:ILE:HG13	2.18	0.44
1:A:100:LYS:HA	1:A:100:LYS:HE3	1.99	0.44
1:B:164:GLN:HG2	1:B:261:ARG:NH1	2.33	0.44
1:B:251:ARG:HD2	2:D:209:ASN:ND2	2.27	0.44
2:D:36:ILE:HD12	2:D:81:LEU:CD1	2.46	0.44
2:D:36:ILE:HD11	2:D:84:CYS:SG	2.58	0.44
1:B:200:GLU:OE2	2:D:259:ARG:NH2	2.50	0.44
1:B:205:LEU:HD23	1:B:209:LEU:CD2	2.47	0.44
2:C:76:ARG:HG2	2:C:76:ARG:NH1	2.32	0.44
2:C:81:LEU:HD12	2:C:81:LEU:HA	1.86	0.44
2:D:161:LYS:HE2	2:D:161:LYS:HB3	1.78	0.44
1:A:81:ARG:NH1	1:A:134:GLU:CB	2.66	0.44
1:A:115:LEU:O	1:A:119:VAL:HG23	2.17	0.44
1:B:206:THR:HG22	1:B:207:GLU:N	2.33	0.44
2:C:36:ILE:HD12	2:C:81:LEU:HD13	1.98	0.44
2:C:242:LYS:O	2:C:245:ASP:HB2	2.17	0.44
2:D:39:HIS:CD2	2:D:41:LYS:HG2	2.53	0.44
1:B:95:LEU:O	1:B:99:ILE:HB	2.18	0.44
2:C:65:VAL:HG22	2:C:328:PHE:CA	2.44	0.44
2:C:136:VAL:HG22	2:C:298:ALA:HB3	1.98	0.44
2:D:223:ILE:HG13	2:D:246:ILE:HG21	2.00	0.44
1:A:53:ILE:H	1:A:53:ILE:HG13	1.64	0.44
2:D:220:ILE:HD12	2:D:220:ILE:H	1.81	0.44
1:B:65:ILE:O	1:B:68:SER:N	2.51	0.43
1:B:210:HIS:HD1	1:B:210:HIS:C	2.22	0.43
1:A:56:ARG:O	1:A:60:GLU:HB2	2.19	0.43
1:A:144:ASP:OD2	1:A:227:ARG:NH2	2.51	0.43
1:A:246:LEU:HD21	1:A:273:GLY:CA	2.48	0.43
1:B:235:ILE:HG21	1:B:283:LEU:HD23	2.00	0.43

*Continued on next page...*

*Continued from previous page...*

Atom-1	Atom-2	Interatomic distance (Å)	Clash overlap (Å)
2:C:83:LEU:O	2:C:83:LEU:HD23	2.17	0.43
2:D:155:HIS:O	2:D:190:SER:O	2.35	0.43
2:D:261:LEU:HD11	2:D:269:ALA:HB3	2.00	0.43
2:C:122:LEU:O	2:C:122:LEU:HG	2.17	0.43
2:C:203:ASP:OD2	2:C:206:LEU:HG	2.18	0.43
1:B:320:THR:HG22	1:B:320:THR:O	2.18	0.43
1:A:246:LEU:CD2	1:A:273:GLY:HA2	2.49	0.43
2:D:277:GLN:HE21	2:D:277:GLN:HB3	1.67	0.43
2:D:290:ARG:HB2	2:D:292:GLN:OE1	2.19	0.43
1:B:204:ASP:OD1	2:D:208:ARG:NH2	2.52	0.43
1:B:290:GLU:HA	1:B:290:GLU:OE1	2.18	0.43
2:C:59:GLN:O	2:C:290:ARG:NH2	2.50	0.43
2:C:133:LYS:HE3	2:C:288:TYR:OH	2.19	0.43
2:C:143:MET:HE2	2:C:272:ASP:HB3	1.98	0.43
2:C:280:LEU:HD13	2:C:298:ALA:HB1	1.99	0.43
1:B:243:GLU:HB2	1:B:276:GLN:NE2	2.34	0.43
2:D:293:PRO:O	2:D:294:TYR:HB3	2.19	0.43
1:A:282:LEU:HD13	1:A:282:LEU:HA	1.87	0.43
1:B:232:VAL:HG13	1:B:233:ASP:N	2.34	0.43
2:D:65:VAL:HG22	2:D:328:PHE:CA	2.46	0.43
1:B:83:GLU:C	1:B:85:GLY:N	2.72	0.43
1:B:102:LEU:CG	1:B:313:LEU:HD23	2.43	0.43
1:A:148:GLU:OE1	1:A:151:ARG:NH1	2.52	0.42
2:D:132:LEU:HD22	2:D:132:LEU:HA	1.90	0.42
1:B:66:ILE:O	1:B:69:VAL:HG22	2.19	0.42
2:C:143:MET:HE1	2:C:302:ILE:CG2	2.46	0.42
2:D:106:LEU:HD12	2:D:106:LEU:HA	1.79	0.42
2:D:211:VAL:O	2:D:215:ILE:HG13	2.19	0.42
2:D:287:HIS:O	2:D:288:TYR:C	2.57	0.42
1:A:275:ARG:CD	1:A:275:ARG:N	2.82	0.42
1:B:81:ARG:C	1:B:81:ARG:HD2	2.40	0.42
1:A:57:GLN:HE21	1:A:57:GLN:HA	1.84	0.42
1:A:69:VAL:HG23	1:A:70:GLN:N	2.34	0.42
1:A:200:GLU:HG2	2:C:234:ILE:HG22	2.01	0.42
2:C:116:PHE:CE2	2:C:285:ALA:HA	2.54	0.42
2:D:96:THR:HG21	2:D:98:ASP:O	2.19	0.42
1:A:73:SER:OG	1:A:296:MET:CE	2.67	0.42
1:A:219:MET:HE3	1:A:219:MET:HB2	2.01	0.42
2:C:50:TYR:CZ	2:C:321:PRO:HG2	2.55	0.42
2:C:146:GLU:HG3	2:C:268:PHE:HZ	1.83	0.42
2:D:32:LYS:HD2	2:D:87:TRP:CZ2	2.54	0.42

*Continued on next page...*

*Continued from previous page...*

Atom-1	Atom-2	Interatomic distance (Å)	Clash overlap (Å)
2:D:157:LYS:HA	2:D:191:ASP:HB2	2.01	0.42
1:A:200:GLU:OE2	2:C:259:ARG:NH2	2.45	0.42
1:B:162:ARG:O	1:B:166:GLN:HG2	2.19	0.42
2:C:220:ILE:HD12	2:C:220:ILE:N	2.35	0.42
2:D:101:ALA:C	2:D:103:GLU:H	2.23	0.42
2:D:147:ALA:HA	2:D:268:PHE:CE2	2.55	0.42
2:D:166:LEU:C	2:D:167:LEU:HD12	2.40	0.42
1:A:235:ILE:CG2	1:A:283:LEU:CD2	2.97	0.42
1:B:252:ARG:NE	2:D:205:GLU:HG3	2.35	0.42
1:B:306:LEU:O	1:B:310:VAL:HG13	2.20	0.42
2:C:136:VAL:HG23	2:C:284:GLN:OE1	2.19	0.42
2:D:114:PRO:HB3	2:D:133:LYS:HG3	2.01	0.42
2:D:188:LYS:HZ1	2:D:189:ASN:CB	2.33	0.42
2:D:296:LYS:HE3	2:D:296:LYS:HB2	1.93	0.42
1:A:108:ASP:OD2	1:A:111:LEU:HB2	2.20	0.41
2:C:92:ILE:HD12	2:C:110:VAL:CG1	2.50	0.41
2:D:321:PRO:O	2:D:323:GLU:N	2.52	0.41
1:A:215:LEU:CD1	1:A:245:ASN:OD1	2.67	0.41
1:A:58:VAL:HG21	1:A:99:ILE:HD12	2.00	0.41
1:B:249:MET:HG2	1:B:269:LEU:HD11	2.03	0.41
1:A:70:GLN:HA	1:A:296:MET:CE	2.50	0.41
1:A:154:SER:OG	1:A:220:LEU:HA	2.21	0.41
1:B:235:ILE:HD13	1:B:282:LEU:HD12	2.01	0.41
2:C:268:PHE:HE1	2:C:304:PRO:HB2	1.85	0.41
2:C:306:THR:HB	2:C:307:PRO:HD2	2.02	0.41
2:D:36:ILE:HB	2:D:94:LEU:HD23	2.02	0.41
2:D:143:MET:CE	2:D:302:ILE:HG23	2.50	0.41
1:A:208:ARG:HD2	2:C:208:ARG:CZ	2.51	0.41
1:A:258:ASP:HA	1:A:259:PRO:HD2	1.83	0.41
1:A:281:ILE:O	1:A:281:ILE:HG13	2.21	0.41
1:B:226:ALA:O	1:B:229:LEU:HB2	2.21	0.41
1:B:148:GLU:CD	1:B:151:ARG:NH1	2.74	0.41
2:C:213:ARG:HG3	2:C:213:ARG:NH1	2.36	0.41
2:C:140:TRP:HE3	2:C:179:VAL:CG2	2.34	0.41
1:A:171:ILE:HG21	2:D:325:ARG:NH1	2.36	0.41
2:C:105:ASN:N	2:C:105:ASN:OD1	2.54	0.41
1:A:151:ARG:HH11	1:A:151:ARG:HB3	1.86	0.41
1:B:77:ASN:ND2	1:B:77:ASN:N	2.69	0.41
1:B:227:ARG:CG	1:B:228:THR:H	2.24	0.41
2:C:35:ALA:HB3	2:C:65:VAL:HG12	2.03	0.41
2:C:90:ASN:O	2:C:114:PRO:HD2	2.21	0.41

*Continued on next page...*

Continued from previous page...

Atom-1	Atom-2	Interatomic distance (Å)	Clash overlap (Å)
2:C:166:LEU:O	2:C:167:LEU:HD12	2.21	0.41
2:C:269:ALA:HA	2:C:270:PRO:HD3	1.92	0.41
2:D:65:VAL:HG23	2:D:328:PHE:HD2	1.86	0.41
2:D:105:ASN:HB2	2:D:106:LEU:H	1.60	0.41
2:D:164:ILE:CD1	2:D:222:TYR:HB2	2.50	0.41
1:A:192:TYR:CE2	1:B:183:LEU:HD12	2.55	0.41
2:D:33:ILE:HD12	2:D:61:VAL:HG21	2.03	0.41
2:D:106:LEU:O	2:D:110:VAL:HG22	2.20	0.41
2:D:259:ARG:NH1	2:D:259:ARG:CG	2.73	0.41
1:B:206:THR:CG2	1:B:207:GLU:N	2.84	0.40
1:B:227:ARG:CZ	1:B:227:ARG:HB2	2.50	0.40
1:B:278:VAL:O	1:B:282:LEU:HB2	2.20	0.40
2:C:189:ASN:O	2:C:189:ASN:CG	2.60	0.40
2:D:302:ILE:O	2:D:303:LYS:HD2	2.21	0.40
1:A:196:ASP:O	1:A:200:GLU:HB2	2.20	0.40
1:B:119:VAL:O	1:B:123:ILE:HG13	2.21	0.40
2:D:188:LYS:NZ	2:D:189:ASN:CB	2.84	0.40
2:C:106:LEU:HD12	2:C:106:LEU:HA	1.86	0.40
2:C:32:LYS:HG2	2:C:62:ASN:HD22	1.86	0.40
2:C:43:SER:HB3	2:C:254:SER:HB2	2.04	0.40
2:C:253:LEU:HG	2:C:254:SER:H	1.84	0.40
2:D:96:THR:CG2	2:D:98:ASP:O	2.69	0.40

There are no symmetry-related clashes.

## 5.3 Torsion angles [i](#)

### 5.3.1 Protein backbone [i](#)

In the following table, the Percentiles column shows the percent Ramachandran outliers of the chain as a percentile score with respect to all X-ray entries followed by that with respect to entries of similar resolution.

The Analysed column shows the number of residues for which the backbone conformation was analysed, and the total number of residues.

Mol	Chain	Analysed	Favoured	Allowed	Outliers	Percentiles	
1	A	271/277 (98%)	246 (91%)	17 (6%)	8 (3%)	4	20
1	B	271/277 (98%)	243 (90%)	21 (8%)	7 (3%)	5	24
2	C	292/304 (96%)	248 (85%)	33 (11%)	11 (4%)	3	15

Continued on next page...

*Continued from previous page...*

Mol	Chain	Analysed	Favoured	Allowed	Outliers	Percentiles	
2	D	292/304 (96%)	255 (87%)	27 (9%)	10 (3%)	3	17
All	All	1126/1162 (97%)	992 (88%)	98 (9%)	36 (3%)	4	19

All (36) Ramachandran outliers are listed below:

Mol	Chain	Res	Type
1	A	76	GLN
1	A	77	ASN
1	B	77	ASN
1	B	188	LYS
1	B	259	PRO
2	C	106	LEU
2	C	190	SER
2	C	218	GLY
2	D	106	LEU
2	D	218	GLY
1	A	188	LYS
1	A	193	GLN
1	B	76	GLN
1	B	185	ALA
2	C	125	ASP
2	D	132	LEU
2	D	322	SER
1	A	259	PRO
2	C	177	LYS
2	C	244	HIS
2	C	322	SER
2	D	129	SER
1	B	317	SER
2	C	189	ASN
2	D	177	LYS
2	D	217	MET
2	D	244	HIS
1	A	256	VAL
1	B	82	LYS
2	C	129	SER
2	D	190	SER
1	A	83	GLU
1	A	191	VAL
2	C	102	TYR
2	C	119	VAL
2	D	119	VAL

### 5.3.2 Protein sidechains [i](#)

In the following table, the Percentiles column shows the percent sidechain outliers of the chain as a percentile score with respect to all X-ray entries followed by that with respect to entries of similar resolution.

The Analysed column shows the number of residues for which the sidechain conformation was analysed, and the total number of residues.

Mol	Chain	Analysed	Rotameric	Outliers	Percentiles	
1	A	251/254 (99%)	224 (89%)	27 (11%)	6	23
1	B	251/254 (99%)	226 (90%)	25 (10%)	7	26
2	C	253/257 (98%)	223 (88%)	30 (12%)	5	20
2	D	253/257 (98%)	231 (91%)	22 (9%)	10	33
All	All	1008/1022 (99%)	904 (90%)	104 (10%)	7	25

All (104) residues with a non-rotameric sidechain are listed below:

Mol	Chain	Res	Type
1	A	56	ARG
1	A	57	GLN
1	A	71	MET
1	A	77	ASN
1	A	82	LYS
1	A	99	ILE
1	A	100	LYS
1	A	126	LEU
1	A	141	LYS
1	A	144	ASP
1	A	148	GLU
1	A	157	LEU
1	A	184	GLU
1	A	188	LYS
1	A	192	TYR
1	A	210	HIS
1	A	214	LEU
1	A	227	ARG
1	A	247	LYS
1	A	263	LYS
1	A	275	ARG
1	A	281	ILE
1	A	282	LEU
1	A	285	GLN

*Continued on next page...*



*Continued from previous page...*

<b>Mol</b>	<b>Chain</b>	<b>Res</b>	<b>Type</b>
1	A	303	PHE
1	A	304	SER
1	A	308	SER
1	B	54	GLU
1	B	56	ARG
1	B	57	GLN
1	B	77	ASN
1	B	100	LYS
1	B	111	LEU
1	B	112	LEU
1	B	134	GLU
1	B	141	LYS
1	B	148	GLU
1	B	157	LEU
1	B	189	ASP
1	B	192	TYR
1	B	205	LEU
1	B	206	THR
1	B	209	LEU
1	B	210	HIS
1	B	214	LEU
1	B	247	LYS
1	B	248	ILE
1	B	275	ARG
1	B	281	ILE
1	B	282	LEU
1	B	283	LEU
1	B	285	GLN
2	C	40	LEU
2	C	41	LYS
2	C	42	ASP
2	C	46	LEU
2	C	94	LEU
2	C	96	THR
2	C	97	VAL
2	C	105	ASN
2	C	118	THR
2	C	123	ASP
2	C	124	LEU
2	C	126	GLU
2	C	128	GLN
2	C	132	LEU

*Continued on next page...*

*Continued from previous page...*

<b>Mol</b>	<b>Chain</b>	<b>Res</b>	<b>Type</b>
2	C	154	ARG
2	C	161	LYS
2	C	167	LEU
2	C	188	LYS
2	C	189	ASN
2	C	191	ASP
2	C	201	ASP
2	C	202	ASN
2	C	205	GLU
2	C	241	ASP
2	C	251	VAL
2	C	259	ARG
2	C	273	LYS
2	C	296	LYS
2	C	301	ILE
2	C	312	ASP
2	D	41	LYS
2	D	64	ARG
2	D	81	LEU
2	D	96	THR
2	D	105	ASN
2	D	118	THR
2	D	123	ASP
2	D	124	LEU
2	D	126	GLU
2	D	128	GLN
2	D	132	LEU
2	D	154	ARG
2	D	161	LYS
2	D	180	THR
2	D	188	LYS
2	D	191	ASP
2	D	201	ASP
2	D	205	GLU
2	D	236	GLU
2	D	259	ARG
2	D	296	LYS
2	D	303	LYS

Sometimes sidechains can be flipped to improve hydrogen bonding and reduce clashes. All (53) such sidechains are listed below:

Mol	Chain	Res	Type
1	A	57	GLN
1	A	70	GLN
1	A	77	ASN
1	A	118	ASN
1	A	125	ASN
1	A	164	GLN
1	A	167	ASN
1	A	190	GLN
1	A	221	ASN
1	A	222	GLN
1	A	236	GLN
1	A	237	GLN
1	A	264	GLN
1	A	267	GLN
1	A	293	GLN
1	A	307	ASN
1	B	57	GLN
1	B	70	GLN
1	B	77	ASN
1	B	91	GLN
1	B	118	ASN
1	B	125	ASN
1	B	164	GLN
1	B	167	ASN
1	B	178	HIS
1	B	190	GLN
1	B	222	GLN
1	B	236	GLN
1	B	237	GLN
1	B	264	GLN
1	B	267	GLN
1	B	276	GLN
1	B	285	GLN
1	B	297	GLN
1	B	307	ASN
2	C	39	HIS
2	C	62	ASN
2	C	90	ASN
2	C	120	ASN
2	C	128	GLN
2	C	193	HIS
2	C	209	ASN
2	C	212	GLN

*Continued on next page...*

*Continued from previous page...*

Mol	Chain	Res	Type
2	C	277	GLN
2	D	39	HIS
2	D	62	ASN
2	D	80	GLN
2	D	90	ASN
2	D	120	ASN
2	D	128	GLN
2	D	209	ASN
2	D	212	GLN
2	D	277	GLN

### 5.3.3 RNA [i](#)

There are no RNA molecules in this entry.

### 5.4 Non-standard residues in protein, DNA, RNA chains [i](#)

There are no non-standard protein/DNA/RNA residues in this entry.

### 5.5 Carbohydrates [i](#)

There are no monosaccharides in this entry.

### 5.6 Ligand geometry [i](#)

2 ligands are modelled in this entry.

In the following table, the Counts columns list the number of bonds (or angles) for which Mogul statistics could be retrieved, the number of bonds (or angles) that are observed in the model and the number of bonds (or angles) that are defined in the Chemical Component Dictionary. The Link column lists molecule types, if any, to which the group is linked. The Z score for a bond length (or angle) is the number of standard deviations the observed value is removed from the expected value. A bond length (or angle) with  $|Z| > 2$  is considered an outlier worth inspection. RMSZ is the root-mean-square of all Z scores of the bond lengths (or angles).

Mol	Type	Chain	Res	Link	Bond lengths			Bond angles		
					Counts	RMSZ	$\# Z  > 2$	Counts	RMSZ	$\# Z  > 2$
3	IPA	D	1	-	3,3,3	0.69	0	3,3,3	0.32	0
3	IPA	C	2	-	3,3,3	0.77	0	3,3,3	0.35	0

There are no bond length outliers.

There are no bond angle outliers.

There are no chirality outliers.

There are no torsion outliers.

There are no ring outliers.

1 monomer is involved in 2 short contacts:

Mol	Chain	Res	Type	Clashes	Symm-Clashes
3	C	2	IPA	2	0

## 5.7 Other polymers [i](#)

There are no such residues in this entry.

## 5.8 Polymer linkage issues [i](#)

There are no chain breaks in this entry.

## 6 Fit of model and data [i](#)

### 6.1 Protein, DNA and RNA chains [i](#)

In the following table, the column labelled ‘#RSRZ > 2’ contains the number (and percentage) of RSRZ outliers, followed by percent RSRZ outliers for the chain as percentile scores relative to all X-ray entries and entries of similar resolution. The OWAB column contains the minimum, median, 95<sup>th</sup> percentile and maximum values of the occupancy-weighted average B-factor per residue. The column labelled ‘Q < 0.9’ lists the number of (and percentage) of residues with an average occupancy less than 0.9.

Mol	Chain	Analysed	<RSRZ>	#RSRZ>2	OWAB(Å <sup>2</sup> )	Q<0.9
1	A	273/277 (98%)	-0.32	4 (1%) 73 57	33, 55, 93, 128	0
1	B	273/277 (98%)	-0.27	4 (1%) 73 57	32, 56, 92, 136	0
2	C	296/304 (97%)	-0.31	1 (0%) 94 87	32, 51, 70, 86	0
2	D	296/304 (97%)	-0.26	2 (0%) 87 76	33, 52, 71, 87	0
All	All	1138/1162 (97%)	-0.29	11 (0%) 82 68	32, 53, 83, 136	0

All (11) RSRZ outliers are listed below:

Mol	Chain	Res	Type	RSRZ
1	B	321	THR	7.1
2	C	176	THR	6.3
1	A	321	THR	5.7
1	B	320	THR	5.5
2	D	176	THR	3.9
1	A	320	THR	3.7
1	A	319	LYS	3.0
1	B	52	MET	2.7
1	B	318	ASN	2.3
1	A	257	GLU	2.2
2	D	244	HIS	2.0

### 6.2 Non-standard residues in protein, DNA, RNA chains [i](#)

There are no non-standard protein/DNA/RNA residues in this entry.

### 6.3 Carbohydrates [i](#)

There are no monosaccharides in this entry.

## 6.4 Ligands [i](#)

In the following table, the Atoms column lists the number of modelled atoms in the group and the number defined in the chemical component dictionary. The B-factors column lists the minimum, median, 95<sup>th</sup> percentile and maximum values of B factors of atoms in the group. The column labelled 'Q< 0.9' lists the number of atoms with occupancy less than 0.9.

Mol	Type	Chain	Res	Atoms	RSCC	RSR	B-factors(Å <sup>2</sup> )	Q<0.9
3	IPA	D	1	4/4	0.84	0.38	57,59,59,60	0
3	IPA	C	2	4/4	0.88	0.34	44,45,47,47	0

## 6.5 Other polymers [i](#)

There are no such residues in this entry.