



Full wwPDB X-ray Structure Validation Report ⓘ

Oct 31, 2023 – 11:19 AM EDT

PDB ID : 3OIG
Title : Crystal Structure of Enoyl-ACP Reductases I (FabI) from *B. subtilis* (complex with NAD and INH)
Authors : Kim, K.-H.; Ha, B.H.; Kim, S.J.; Hong, S.K.; Hwang, K.Y.; Kim, E.E.
Deposited on : 2010-08-19
Resolution : 1.25 Å(reported)

This is a Full wwPDB X-ray Structure Validation Report for a publicly released PDB entry.

We welcome your comments at validation@mail.wwpdb.org

A user guide is available at

<https://www.wwpdb.org/validation/2017/XrayValidationReportHelp>

with specific help available everywhere you see the ⓘ symbol.

The types of validation reports are described at

<http://www.wwpdb.org/validation/2017/FAQs#types>.

The following versions of software and data (see [references ⓘ](#)) were used in the production of this report:

MolProbity : 4.02b-467
Mogul : 1.8.5 (274361), CSD as541be (2020)
Xtriage (Phenix) : 1.13
EDS : 2.36
buster-report : 1.1.7 (2018)
Percentile statistics : 20191225.v01 (using entries in the PDB archive December 25th 2019)
Refmac : 5.8.0158
CCP4 : 7.0.044 (Gargrove)
Ideal geometry (proteins) : Engh & Huber (2001)
Ideal geometry (DNA, RNA) : Parkinson et al. (1996)
Validation Pipeline (wwPDB-VP) : 2.36

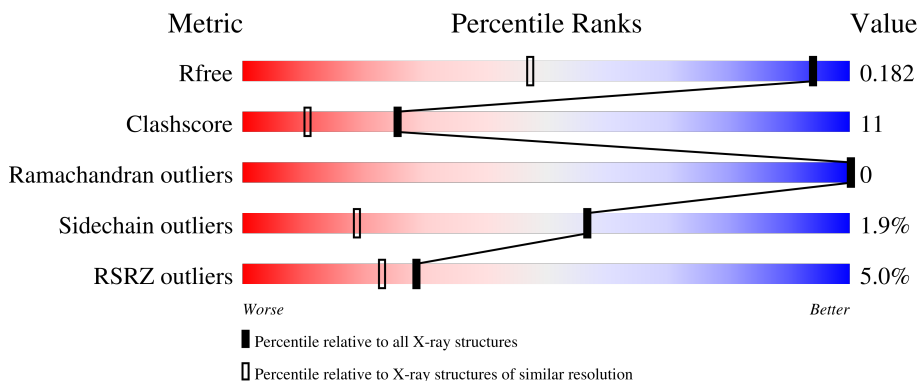
1 Overall quality at a glance

The following experimental techniques were used to determine the structure:

X-RAY DIFFRACTION

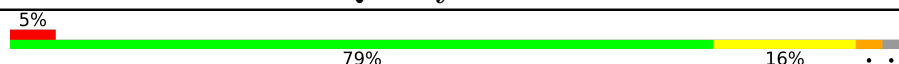
The reported resolution of this entry is 1.25 Å.

Percentile scores (ranging between 0-100) for global validation metrics of the entry are shown in the following graphic. The table shows the number of entries on which the scores are based.



Metric	Whole archive (#Entries)	Similar resolution (#Entries, resolution range(Å))
R_{free}	130704	1023 (1.28-1.24)
Clashscore	141614	1060 (1.28-1.24)
Ramachandran outliers	138981	1029 (1.28-1.24)
Sidechain outliers	138945	1028 (1.28-1.24)
RSRZ outliers	127900	1004 (1.28-1.24)

The table below summarises the geometric issues observed across the polymeric chains and their fit to the electron density. The red, orange, yellow and green segments of the lower bar indicate the fraction of residues that contain outliers for ≥ 3 , 2, 1 and 0 types of geometric quality criteria respectively. A grey segment represents the fraction of residues that are not modelled. The numeric value for each fraction is indicated below the corresponding segment, with a dot representing fractions $\leq 5\%$. The upper red bar (where present) indicates the fraction of residues that have poor fit to the electron density. The numeric value is given above the bar.

Mol	Chain	Length	Quality of chain
1	A	266	

2 Entry composition [i](#)

There are 4 unique types of molecules in this entry. The entry contains 2310 atoms, of which 0 are hydrogens and 0 are deuteriums.

In the tables below, the ZeroOcc column contains the number of atoms modelled with zero occupancy, the AltConf column contains the number of residues with at least one atom in alternate conformation and the Trace column contains the number of residues modelled with at most 2 atoms.

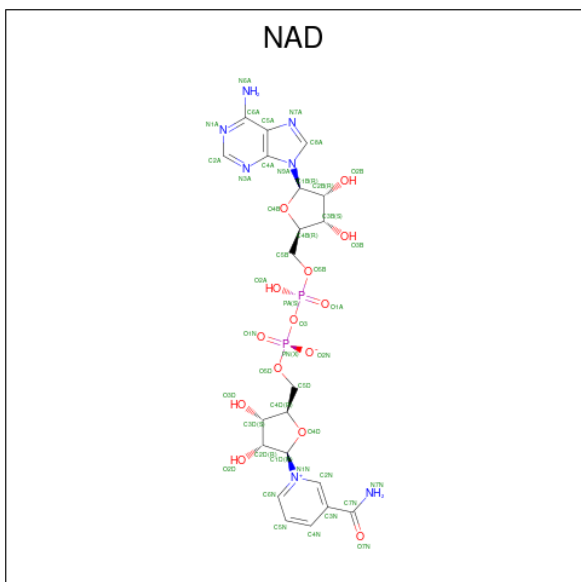
- Molecule 1 is a protein called Enoyl-[acyl-carrier-protein] reductase [NADH].

Mol	Chain	Residues	Atoms					ZeroOcc	AltConf	Trace
			Total	C	N	O	S			
1	A	260	1972	1234	346	382	10	0	0	0

There are 8 discrepancies between the modelled and reference sequences:

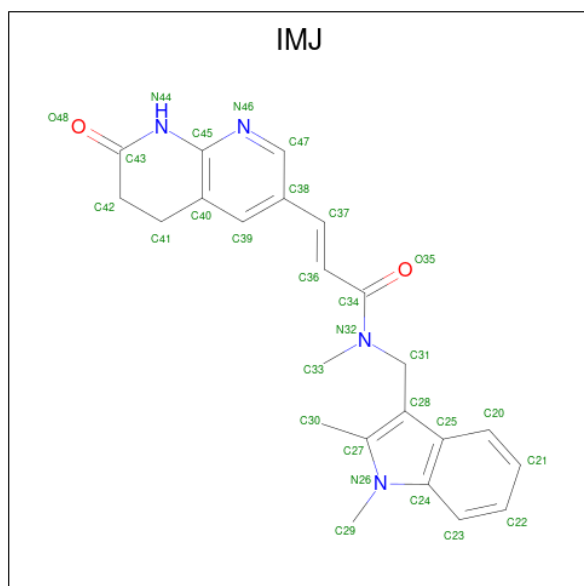
Chain	Residue	Modelled	Actual	Comment	Reference
A	259	LEU	-	EXPRESSION TAG	UNP P54616
A	260	GLU	-	EXPRESSION TAG	UNP P54616
A	261	HIS	-	EXPRESSION TAG	UNP P54616
A	262	HIS	-	EXPRESSION TAG	UNP P54616
A	263	HIS	-	EXPRESSION TAG	UNP P54616
A	264	HIS	-	EXPRESSION TAG	UNP P54616
A	265	HIS	-	EXPRESSION TAG	UNP P54616
A	266	HIS	-	EXPRESSION TAG	UNP P54616

- Molecule 2 is NICOTINAMIDE-ADENINE-DINUCLEOTIDE (three-letter code: NAD) (formula: C₂₁H₂₇N₇O₁₄P₂).



Mol	Chain	Residues	Atoms				ZeroOcc	AltConf	
			Total	C	N	O			P
2	A	1	44	21	7	14	2	0	0

- Molecule 3 is (2E)-N-[(1,2-dimethyl-1H-indol-3-yl)methyl]-N-methyl-3-(7-oxo-5,6,7,8-tetrahydro-1,8-naphthyridin-3-yl)prop-2-enamide (three-letter code: IMJ) (formula: C₂₃H₂₄N₄O₂).



Mol	Chain	Residues	Atoms				ZeroOcc	AltConf
			Total	C	N	O		
3	A	1	29	23	4	2	0	0

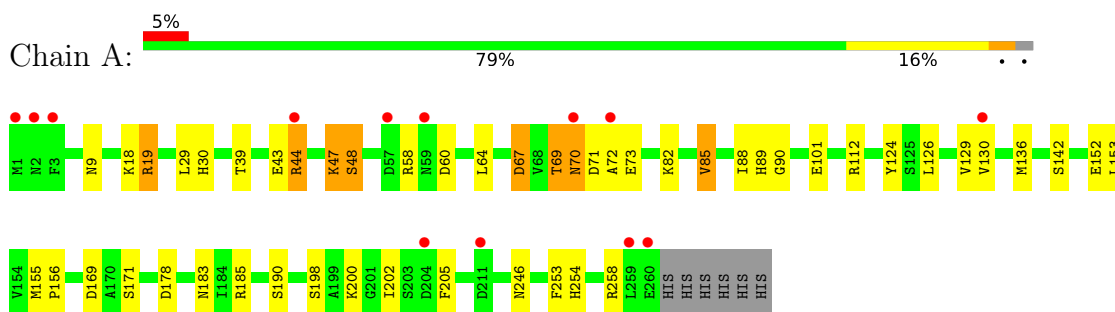
- Molecule 4 is water.

Mol	Chain	Residues	Atoms		ZeroOcc	AltConf
			Total	O		
4	A	265	265	265	0	0

3 Residue-property plots [i](#)

These plots are drawn for all protein, RNA, DNA and oligosaccharide chains in the entry. The first graphic for a chain summarises the proportions of the various outlier classes displayed in the second graphic. The second graphic shows the sequence view annotated by issues in geometry and electron density. Residues are color-coded according to the number of geometric quality criteria for which they contain at least one outlier: green = 0, yellow = 1, orange = 2 and red = 3 or more. A red dot above a residue indicates a poor fit to the electron density ($RSRZ > 2$). Stretches of 2 or more consecutive residues without any outlier are shown as a green connector. Residues present in the sample, but not in the model, are shown in grey.

- Molecule 1: Enoyl-[acyl-carrier-protein] reductase [NADH]



4 Data and refinement statistics

Property	Value	Source
Space group	I 2 2 2	Depositor
Cell constants a, b, c, α , β , γ	69.13Å 80.00Å 88.08Å 90.00° 90.00° 90.00°	Depositor
Resolution (Å)	33.69 – 1.25 33.69 – 1.25	Depositor EDS
% Data completeness (in resolution range)	99.5 (33.69-1.25) 99.5 (33.69-1.25)	Depositor EDS
R_{merge}	0.10	Depositor
R_{sym}	(Not available)	Depositor
$\langle I/\sigma(I) \rangle$ ¹	1.37 (at 1.25Å)	Xtrriage
Refinement program	CNS, REFMAC 5.5.0109	Depositor
R, R_{free}	0.167 , 0.185 0.165 , 0.182	Depositor DCC
R_{free} test set	3442 reflections (5.07%)	wwPDB-VP
Wilson B-factor (Å ²)	8.2	Xtrriage
Anisotropy	0.107	Xtrriage
Bulk solvent k_{sol} (e/Å ³), B_{sol} (Å ²)	0.35 , 38.6	EDS
L-test for twinning ²	$\langle L \rangle = 0.50$, $\langle L^2 \rangle = 0.33$	Xtrriage
Estimated twinning fraction	No twinning to report.	Xtrriage
F_o, F_c correlation	0.96	EDS
Total number of atoms	2310	wwPDB-VP
Average B, all atoms (Å ²)	11.0	wwPDB-VP

Xtrriage's analysis on translational NCS is as follows: *The largest off-origin peak in the Patterson function is 5.90% of the height of the origin peak. No significant pseudotranslation is detected.*

¹Intensities estimated from amplitudes.

²Theoretical values of $\langle |L| \rangle$, $\langle L^2 \rangle$ for acentric reflections are 0.5, 0.333 respectively for untwinned datasets, and 0.375, 0.2 for perfectly twinned datasets.

5 Model quality i

5.1 Standard geometry i

Bond lengths and bond angles in the following residue types are not validated in this section: NAD, IMJ

The Z score for a bond length (or angle) is the number of standard deviations the observed value is removed from the expected value. A bond length (or angle) with $|Z| > 5$ is considered an outlier worth inspection. RMSZ is the root-mean-square of all Z scores of the bond lengths (or angles).

Mol	Chain	Bond lengths		Bond angles	
		RMSZ	# Z >5	RMSZ	# Z >5
1	A	1.44	14/2001 (0.7%)	1.26	14/2706 (0.5%)

All (14) bond length outliers are listed below:

Mol	Chain	Res	Type	Atoms	Z	Observed(Å)	Ideal(Å)
1	A	171	SER	CB-OG	-10.53	1.28	1.42
1	A	185	ARG	CZ-NH2	9.58	1.45	1.33
1	A	85	VAL	CB-CG2	-8.91	1.34	1.52
1	A	185	ARG	CZ-NH1	8.83	1.44	1.33
1	A	124	TYR	CE2-CZ	-8.15	1.27	1.38
1	A	48	SER	CB-OG	-6.85	1.33	1.42
1	A	152	GLU	CD-OE2	6.34	1.32	1.25
1	A	153	LEU	CA-CB	6.27	1.68	1.53
1	A	205	PHE	CE2-CZ	-5.68	1.26	1.37
1	A	205	PHE	CE1-CZ	5.62	1.48	1.37
1	A	73	GLU	CD-OE2	5.50	1.31	1.25
1	A	253	PHE	CD1-CE1	5.23	1.49	1.39
1	A	124	TYR	CZ-OH	5.02	1.46	1.37
1	A	19	ARG	CG-CD	-5.02	1.39	1.51

All (14) bond angle outliers are listed below:

Mol	Chain	Res	Type	Atoms	Z	Observed(°)	Ideal(°)
1	A	185	ARG	NE-CZ-NH2	-12.92	113.84	120.30
1	A	112	ARG	NE-CZ-NH2	-10.51	115.05	120.30
1	A	129	VAL	CA-CB-CG2	8.92	124.28	110.90
1	A	67	ASP	CB-CG-OD2	7.67	125.20	118.30
1	A	69	THR	OG1-CB-CG2	-7.46	92.83	110.00
1	A	178	ASP	CB-CG-OD1	7.43	124.98	118.30
1	A	178	ASP	CB-CG-OD2	-7.08	111.93	118.30

Continued on next page...

Continued from previous page...

Mol	Chain	Res	Type	Atoms	Z	Observed(°)	Ideal(°)
1	A	29	LEU	CB-CG-CD2	7.06	123.00	111.00
1	A	124	TYR	CG-CD2-CE2	-6.98	115.72	121.30
1	A	71	ASP	CB-CG-OD2	-6.13	112.78	118.30
1	A	60	ASP	CB-CG-OD2	5.97	123.67	118.30
1	A	73	GLU	OE1-CD-OE2	-5.88	116.24	123.30
1	A	169	ASP	CB-CG-OD1	5.51	123.26	118.30
1	A	19	ARG	NE-CZ-NH2	-5.38	117.61	120.30

There are no chirality outliers.

There are no planarity outliers.

5.2 Too-close contacts

In the following table, the Non-H and H(model) columns list the number of non-hydrogen atoms and hydrogen atoms in the chain respectively. The H(added) column lists the number of hydrogen atoms added and optimized by MolProbity. The Clashes column lists the number of clashes within the asymmetric unit, whereas Symm-Clashes lists symmetry-related clashes.

Mol	Chain	Non-H	H(model)	H(added)	Clashes	Symm-Clashes
1	A	1972	0	1977	43	0
2	A	44	0	26	0	0
3	A	29	0	24	2	0
4	A	265	0	0	12	0
All	All	2310	0	2027	43	0

The all-atom clashscore is defined as the number of clashes found per 1000 atoms (including hydrogen atoms). The all-atom clashscore for this structure is 11.

All (43) close contacts within the same asymmetric unit are listed below, sorted by their clash magnitude.

Atom-1	Atom-2	Interatomic distance (Å)	Clash overlap (Å)
1:A:44:ARG:N	1:A:44:ARG:HD2	1.49	1.17
1:A:48:SER:HB3	4:A:421:HOH:O	1.42	1.13
1:A:155:MET:CE	4:A:530:HOH:O	2.07	1.03
1:A:44:ARG:H	1:A:44:ARG:CD	1.73	1.01
1:A:43:GLU:HG3	1:A:44:ARG:NH1	1.79	0.98
1:A:9:ASN:H	1:A:89:HIS:HD2	1.15	0.94
1:A:44:ARG:HD2	1:A:44:ARG:H	0.79	0.91
1:A:155:MET:HE2	4:A:530:HOH:O	1.65	0.91
1:A:126:LEU:O	1:A:130:VAL:HG23	1.76	0.85

Continued on next page...

Continued from previous page...

Atom-1	Atom-2	Interatomic distance (Å)	Clash overlap (Å)
1:A:67:ASP:OD2	1:A:69:THR:HG23	1.76	0.83
1:A:44:ARG:N	1:A:44:ARG:CD	2.38	0.80
1:A:9:ASN:H	1:A:89:HIS:CD2	2.04	0.72
1:A:72:ALA:HB2	4:A:415:HOH:O	1.93	0.69
1:A:43:GLU:HG3	1:A:44:ARG:HH12	1.56	0.69
1:A:47:LYS:HG3	4:A:362:HOH:O	1.91	0.69
1:A:155:MET:HE3	1:A:156:PRO:HD2	1.78	0.66
1:A:18:LYS:HE3	1:A:19:ARG:CZ	2.25	0.66
1:A:155:MET:HE1	4:A:530:HOH:O	1.81	0.62
1:A:183:ASN:HB3	4:A:477:HOH:O	1.99	0.62
1:A:254:HIS:HD2	4:A:532:HOH:O	1.86	0.59
1:A:43:GLU:HG3	1:A:44:ARG:HH11	1.63	0.58
1:A:85:VAL:O	1:A:85:VAL:HG22	2.04	0.58
1:A:101:GLU:HG3	4:A:513:HOH:O	2.04	0.58
1:A:200:LYS:HE2	4:A:485:HOH:O	2.03	0.56
1:A:9:ASN:ND2	1:A:85:VAL:CG2	2.71	0.54
1:A:9:ASN:CG	1:A:85:VAL:HG21	2.28	0.54
1:A:88:ILE:HG13	1:A:136:MET:HE2	1.92	0.52
1:A:183:ASN:CB	4:A:477:HOH:O	2.58	0.51
1:A:190:SER:HB2	1:A:246:ASN:HD21	1.78	0.48
1:A:30:HIS:HE1	1:A:58:ARG:H	1.62	0.47
1:A:101:GLU:CG	4:A:513:HOH:O	2.61	0.47
1:A:39:THR:HA	1:A:64:LEU:O	2.15	0.47
1:A:9:ASN:ND2	1:A:85:VAL:HG21	2.30	0.46
1:A:44:ARG:H	1:A:44:ARG:HH11	1.64	0.46
1:A:70:ASN:C	1:A:70:ASN:HD22	2.19	0.46
1:A:198:SER:O	3:A:301:IMJ:H39	2.16	0.46
1:A:90:GLY:HA2	1:A:142:SER:O	2.17	0.45
1:A:88:ILE:CD1	1:A:136:MET:HE2	2.48	0.44
1:A:18:LYS:HE3	1:A:19:ARG:NH1	2.34	0.43
1:A:18:LYS:CE	1:A:19:ARG:CZ	2.96	0.42
1:A:70:ASN:ND2	1:A:72:ALA:H	2.18	0.41
1:A:202:ILE:HD11	3:A:301:IMJ:C28	2.50	0.41
1:A:82:LYS:HA	1:A:136:MET:HE3	2.03	0.40

There are no symmetry-related clashes.

5.3 Torsion angles [i](#)

5.3.1 Protein backbone [i](#)

In the following table, the Percentiles column shows the percent Ramachandran outliers of the chain as a percentile score with respect to all X-ray entries followed by that with respect to entries of similar resolution.

The Analysed column shows the number of residues for which the backbone conformation was analysed, and the total number of residues.

Mol	Chain	Analysed	Favoured	Allowed	Outliers	Percentiles
1	A	258/266 (97%)	247 (96%)	11 (4%)	0	100 100

There are no Ramachandran outliers to report.

5.3.2 Protein sidechains [i](#)

In the following table, the Percentiles column shows the percent sidechain outliers of the chain as a percentile score with respect to all X-ray entries followed by that with respect to entries of similar resolution.

The Analysed column shows the number of residues for which the sidechain conformation was analysed, and the total number of residues.

Mol	Chain	Analysed	Rotameric	Outliers	Percentiles
1	A	211/217 (97%)	207 (98%)	4 (2%)	57 19

All (4) residues with a non-rotameric sidechain are listed below:

Mol	Chain	Res	Type
1	A	44	ARG
1	A	47	LYS
1	A	70	ASN
1	A	258	ARG

Sometimes sidechains can be flipped to improve hydrogen bonding and reduce clashes. All (6) such sidechains are listed below:

Mol	Chain	Res	Type
1	A	30	HIS
1	A	50	HIS
1	A	70	ASN
1	A	89	HIS

Continued on next page...

Continued from previous page...

Mol	Chain	Res	Type
1	A	246	ASN
1	A	254	HIS

5.3.3 RNA [i](#)

There are no RNA molecules in this entry.

5.4 Non-standard residues in protein, DNA, RNA chains [i](#)

There are no non-standard protein/DNA/RNA residues in this entry.

5.5 Carbohydrates [i](#)

There are no monosaccharides in this entry.

5.6 Ligand geometry [i](#)

2 ligands are modelled in this entry.

In the following table, the Counts columns list the number of bonds (or angles) for which Mogul statistics could be retrieved, the number of bonds (or angles) that are observed in the model and the number of bonds (or angles) that are defined in the Chemical Component Dictionary. The Link column lists molecule types, if any, to which the group is linked. The Z score for a bond length (or angle) is the number of standard deviations the observed value is removed from the expected value. A bond length (or angle) with $|Z| > 2$ is considered an outlier worth inspection. RMSZ is the root-mean-square of all Z scores of the bond lengths (or angles).

Mol	Type	Chain	Res	Link	Bond lengths			Bond angles		
					Counts	RMSZ	# Z > 2	Counts	RMSZ	# Z > 2
2	NAD	A	1501	-	42,48,48	1.83	10 (23%)	50,73,73	2.10	12 (24%)
3	IMJ	A	301	-	29,32,32	1.58	7 (24%)	36,46,46	2.50	11 (30%)

In the following table, the Chirals column lists the number of chiral outliers, the number of chiral centers analysed, the number of these observed in the model and the number defined in the Chemical Component Dictionary. Similar counts are reported in the Torsion and Rings columns. '-' means no outliers of that kind were identified.

Mol	Type	Chain	Res	Link	Chirals	Torsions	Rings
2	NAD	A	1501	-	-	8/26/62/62	0/5/5/5
3	IMJ	A	301	-	-	0/11/22/22	0/4/4/4

All (17) bond length outliers are listed below:

Mol	Chain	Res	Type	Atoms	Z	Observed(Å)	Ideal(Å)
2	A	1501	NAD	C4N-C3N	4.70	1.47	1.39
2	A	1501	NAD	C5N-C4N	4.57	1.48	1.38
2	A	1501	NAD	C2D-C1D	-4.07	1.47	1.53
2	A	1501	NAD	C2N-N1N	3.62	1.39	1.35
2	A	1501	NAD	C3N-C7N	-3.46	1.45	1.50
3	A	301	IMJ	C27-N26	-3.45	1.36	1.39
3	A	301	IMJ	C39-C40	3.25	1.45	1.39
2	A	1501	NAD	C2A-N3A	3.20	1.37	1.32
2	A	1501	NAD	C4A-N3A	-2.76	1.31	1.35
3	A	301	IMJ	O35-C34	2.69	1.29	1.23
3	A	301	IMJ	C29-N26	2.69	1.53	1.47
3	A	301	IMJ	C45-N44	2.61	1.41	1.38
2	A	1501	NAD	PN-O2N	-2.25	1.44	1.55
3	A	301	IMJ	O48-C43	2.25	1.27	1.23
3	A	301	IMJ	C20-C25	-2.22	1.37	1.42
2	A	1501	NAD	C5A-C4A	-2.15	1.35	1.40
2	A	1501	NAD	O7N-C7N	2.07	1.28	1.24

All (23) bond angle outliers are listed below:

Mol	Chain	Res	Type	Atoms	Z	Observed(°)	Ideal(°)
2	A	1501	NAD	C5N-C4N-C3N	-7.51	111.46	120.34
3	A	301	IMJ	C42-C43-N44	6.35	120.97	116.24
3	A	301	IMJ	C45-N44-C43	-5.91	118.52	124.24
3	A	301	IMJ	O48-C43-N44	-5.42	116.64	121.43
2	A	1501	NAD	C2N-C3N-C4N	5.33	124.30	118.26
3	A	301	IMJ	C38-C39-C40	-5.02	114.64	121.69
2	A	1501	NAD	C3N-C7N-N7N	4.89	123.62	117.75
3	A	301	IMJ	C39-C38-C47	4.83	122.39	117.10
2	A	1501	NAD	O4B-C1B-C2B	-4.35	100.58	106.93
2	A	1501	NAD	O7N-C7N-N7N	-4.34	116.41	122.58
3	A	301	IMJ	C29-N26-C27	3.76	127.78	124.09
2	A	1501	NAD	C4A-C5A-N7A	3.40	112.94	109.40
2	A	1501	NAD	C6N-N1N-C2N	-3.38	118.89	121.97
2	A	1501	NAD	N3A-C2A-N1A	-3.31	123.51	128.68
3	A	301	IMJ	C21-C22-C23	3.15	124.86	120.44
2	A	1501	NAD	C5A-C6A-N6A	2.47	124.11	120.35
3	A	301	IMJ	C28-C27-N26	2.28	108.93	106.86
3	A	301	IMJ	C42-C41-C40	-2.26	107.24	112.03
2	A	1501	NAD	C1B-N9A-C4A	-2.16	122.84	126.64
2	A	1501	NAD	C6N-C5N-C4N	2.13	122.54	119.44
3	A	301	IMJ	C31-N32-C34	2.10	125.20	119.96

Continued on next page...

Continued from previous page...

Mol	Chain	Res	Type	Atoms	Z	Observed(°)	Ideal(°)
2	A	1501	NAD	C4N-C3N-C7N	-2.09	115.46	121.04
3	A	301	IMJ	C36-C34-N32	2.01	119.51	118.00

There are no chirality outliers.

All (8) torsion outliers are listed below:

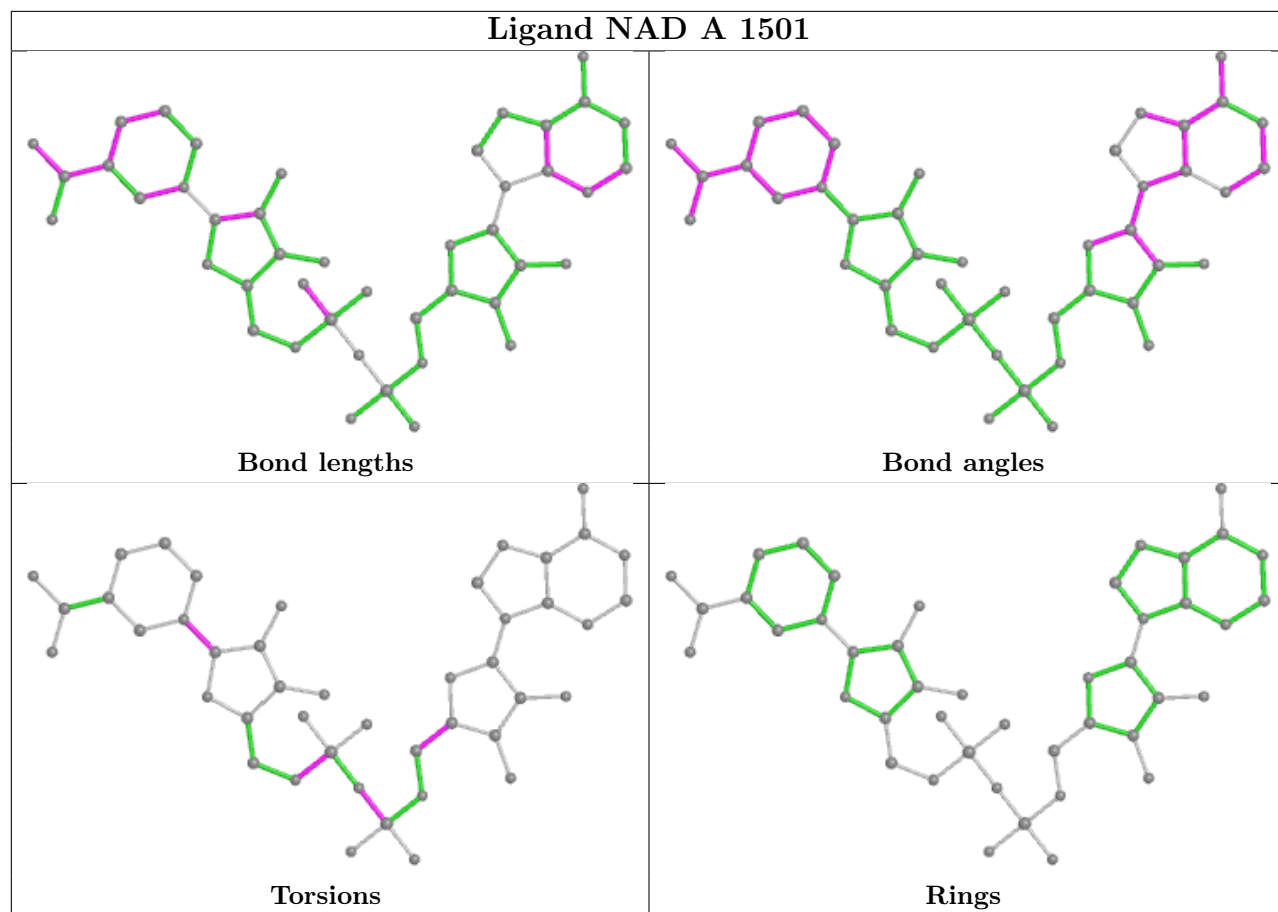
Mol	Chain	Res	Type	Atoms
2	A	1501	NAD	PN-O3-PA-O5B
2	A	1501	NAD	C5D-O5D-PN-O1N
2	A	1501	NAD	C5D-O5D-PN-O2N
2	A	1501	NAD	O4D-C1D-N1N-C2N
2	A	1501	NAD	O4D-C1D-N1N-C6N
2	A	1501	NAD	O4B-C4B-C5B-O5B
2	A	1501	NAD	C5D-O5D-PN-O3
2	A	1501	NAD	C2D-C1D-N1N-C6N

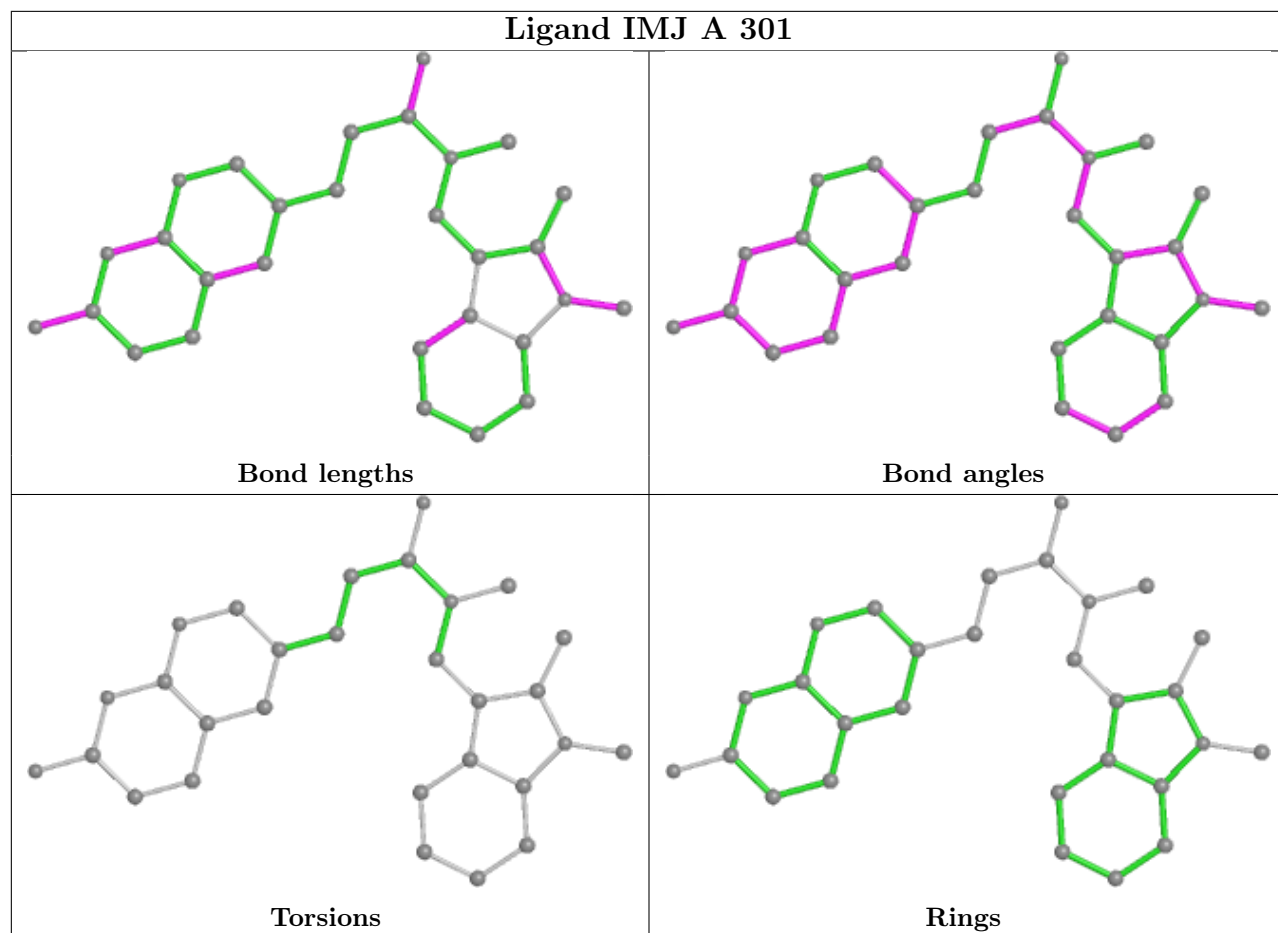
There are no ring outliers.

1 monomer is involved in 2 short contacts:

Mol	Chain	Res	Type	Clashes	Symm-Clashes
3	A	301	IMJ	2	0

The following is a two-dimensional graphical depiction of Mogul quality analysis of bond lengths, bond angles, torsion angles, and ring geometry for all instances of the Ligand of Interest. In addition, ligands with molecular weight > 250 and outliers as shown on the validation Tables will also be included. For torsion angles, if less than 5% of the Mogul distribution of torsion angles is within 10 degrees of the torsion angle in question, then that torsion angle is considered an outlier. Any bond that is central to one or more torsion angles identified as an outlier by Mogul will be highlighted in the graph. For rings, the root-mean-square deviation (RMSD) between the ring in question and similar rings identified by Mogul is calculated over all ring torsion angles. If the average RMSD is greater than 60 degrees and the minimal RMSD between the ring in question and any Mogul-identified rings is also greater than 60 degrees, then that ring is considered an outlier. The outliers are highlighted in purple. The color gray indicates Mogul did not find sufficient equivalents in the CSD to analyse the geometry.





5.7 Other polymers [i](#)

There are no such residues in this entry.

5.8 Polymer linkage issues [i](#)

There are no chain breaks in this entry.

6 Fit of model and data [i](#)

6.1 Protein, DNA and RNA chains [i](#)

In the following table, the column labelled ‘#RSRZ > 2’ contains the number (and percentage) of RSRZ outliers, followed by percent RSRZ outliers for the chain as percentile scores relative to all X-ray entries and entries of similar resolution. The OWAB column contains the minimum, median, 95th percentile and maximum values of the occupancy-weighted average B-factor per residue. The column labelled ‘Q < 0.9’ lists the number of (and percentage) of residues with an average occupancy less than 0.9.

Mol	Chain	Analysed	<RSRZ>	#RSRZ>2	OWAB(Å ²)	Q<0.9
1	A	260/266 (97%)	-0.02	13 (5%) 28 23	4, 8, 21, 35	0

All (13) RSRZ outliers are listed below:

Mol	Chain	Res	Type	RSRZ
1	A	259	LEU	6.3
1	A	59	ASN	4.4
1	A	3	PHE	4.1
1	A	1	MET	3.1
1	A	57	ASP	3.0
1	A	204	ASP	2.6
1	A	130	VAL	2.6
1	A	44	ARG	2.5
1	A	2	ASN	2.4
1	A	70	ASN	2.3
1	A	260	GLU	2.3
1	A	211	ASP	2.2
1	A	72	ALA	2.0

6.2 Non-standard residues in protein, DNA, RNA chains [i](#)

There are no non-standard protein/DNA/RNA residues in this entry.

6.3 Carbohydrates [i](#)

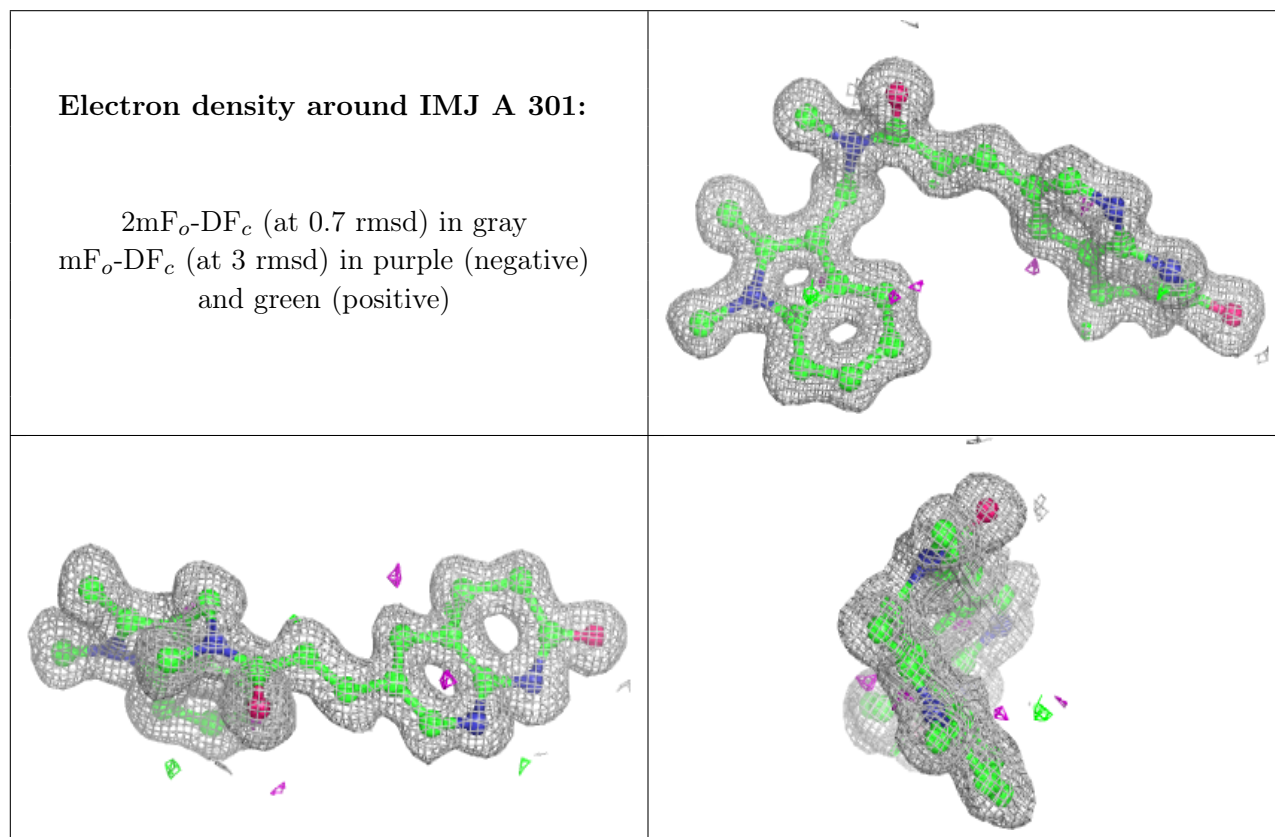
There are no monosaccharides in this entry.

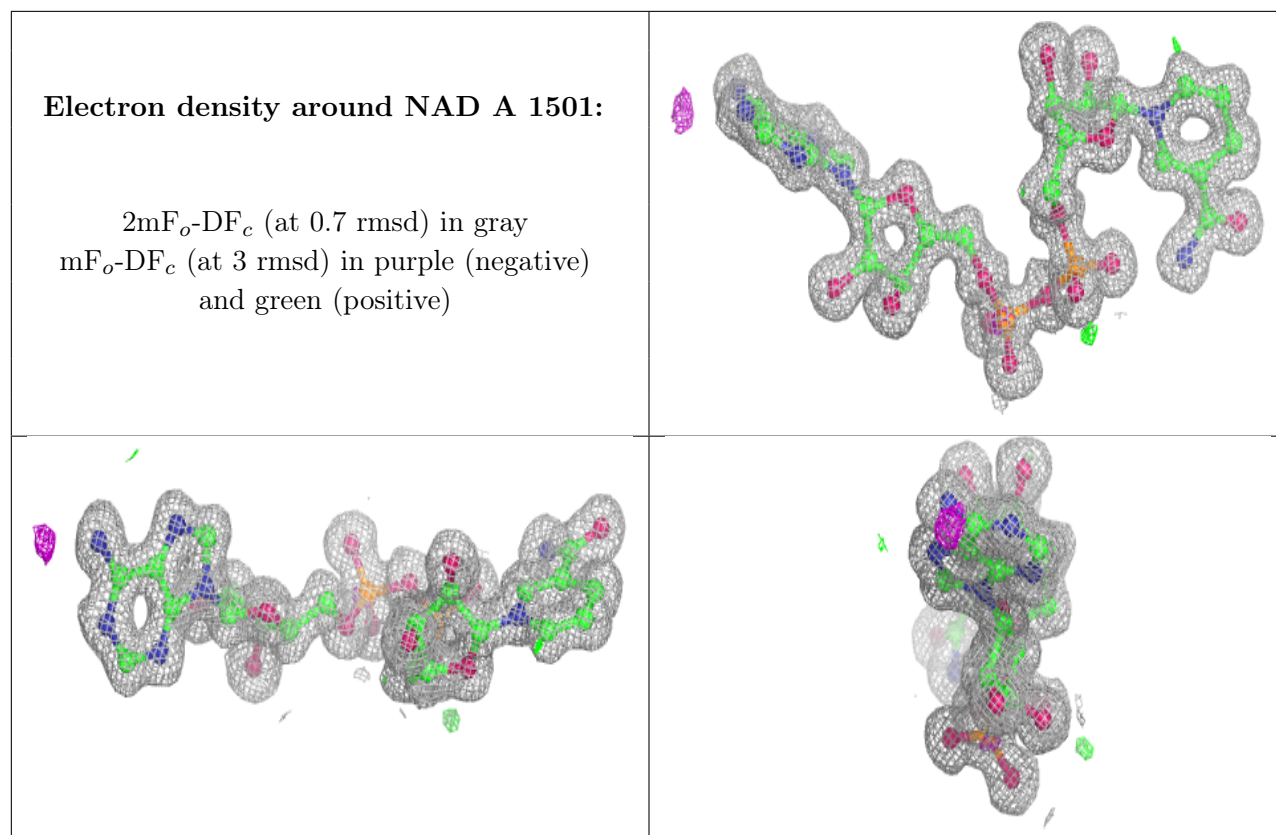
6.4 Ligands [i](#)

In the following table, the Atoms column lists the number of modelled atoms in the group and the number defined in the chemical component dictionary. The B-factors column lists the minimum, median, 95th percentile and maximum values of B factors of atoms in the group. The column labelled 'Q<0.9' lists the number of atoms with occupancy less than 0.9.

Mol	Type	Chain	Res	Atoms	RSCC	RSR	B-factors(\AA^2)	Q<0.9
3	IMJ	A	301	29/29	0.96	0.07	7,8,13,14	0
2	NAD	A	1501	44/44	0.99	0.04	4,6,8,9	0

The following is a graphical depiction of the model fit to experimental electron density of all instances of the Ligand of Interest. In addition, ligands with molecular weight > 250 and outliers as shown on the geometry validation Tables will also be included. Each fit is shown from different orientation to approximate a three-dimensional view.





6.5 Other polymers [i](#)

There are no such residues in this entry.