



Full wwPDB X-ray Structure Validation Report ⓘ

Sep 2, 2023 – 07:29 PM EDT

PDB ID : 3RHA
Title : The crystal structure of Oxidoreductase from *Arthrobacter aurescens*
Authors : Zhang, Z.; Almo, S.C.; Swaminathan, S.; New York Structural Genomics Research Consortium (NYSGRC)
Deposited on : 2011-04-11
Resolution : 2.05 Å (reported)

This is a Full wwPDB X-ray Structure Validation Report for a publicly released PDB entry.

We welcome your comments at validation@mail.wwpdb.org

A user guide is available at

<https://www.wwpdb.org/validation/2017/XrayValidationReportHelp>

with specific help available everywhere you see the ⓘ symbol.

The types of validation reports are described at

<http://www.wwpdb.org/validation/2017/FAQs#types>.

The following versions of software and data (see [references ⓘ](#)) were used in the production of this report:

MolProbity : 4.02b-467
Mogul : 1.8.5 (274361), CSD as541be (2020)
Xtriage (Phenix) : 1.13
EDS : 2.35
buster-report : 1.1.7 (2018)
Percentile statistics : 20191225.v01 (using entries in the PDB archive December 25th 2019)
Refmac : 5.8.0158
CCP4 : 7.0.044 (Gargrove)
Ideal geometry (proteins) : Engh & Huber (2001)
Ideal geometry (DNA, RNA) : Parkinson et al. (1996)
Validation Pipeline (wwPDB-VP) : 2.35

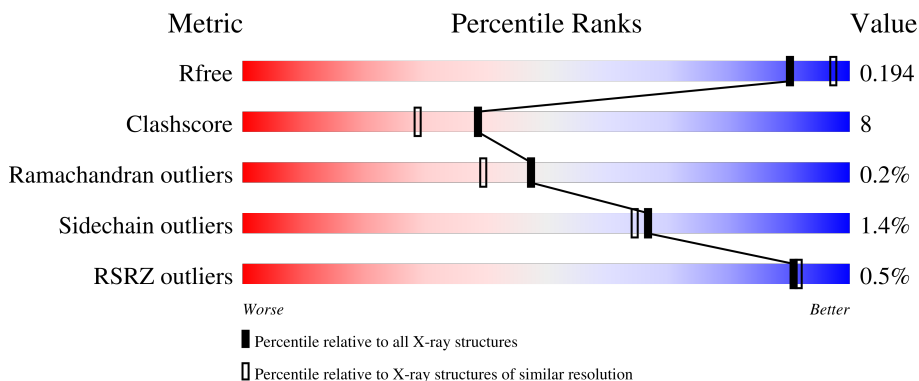
1 Overall quality at a glance

The following experimental techniques were used to determine the structure:

X-RAY DIFFRACTION

The reported resolution of this entry is 2.05 Å.

Percentile scores (ranging between 0-100) for global validation metrics of the entry are shown in the following graphic. The table shows the number of entries on which the scores are based.



Metric	Whole archive (#Entries)	Similar resolution (#Entries, resolution range(Å))
R_{free}	130704	2684 (2.08-2.04)
Clashscore	141614	2801 (2.08-2.04)
Ramachandran outliers	138981	2768 (2.08-2.04)
Sidechain outliers	138945	2768 (2.08-2.04)
RSRZ outliers	127900	2646 (2.08-2.04)

The table below summarises the geometric issues observed across the polymeric chains and their fit to the electron density. The red, orange, yellow and green segments of the lower bar indicate the fraction of residues that contain outliers for ≥ 3 , 2, 1 and 0 types of geometric quality criteria respectively. A grey segment represents the fraction of residues that are not modelled. The numeric value for each fraction is indicated below the corresponding segment, with a dot representing fractions $\leq 5\%$. The upper red bar (where present) indicates the fraction of residues that have poor fit to the electron density. The numeric value is given above the bar.

Mol	Chain	Length	Quality of chain
1	A	482	
1	B	482	

2 Entry composition i

There are 4 unique types of molecules in this entry. The entry contains 8106 atoms, of which 0 are hydrogens and 0 are deuteriums.

In the tables below, the ZeroOcc column contains the number of atoms modelled with zero occupancy, the AltConf column contains the number of residues with at least one atom in alternate conformation and the Trace column contains the number of residues modelled with at most 2 atoms.

- Molecule 1 is a protein called Putrescine oxidase.

Mol	Chain	Residues	Atoms					ZeroOcc	AltConf	Trace
			Total	C	N	O	S			
1	A	459	3535	2217	614	692	12	0	3	0
1	B	452	3479	2181	607	679	12	0	0	0

There are 48 discrepancies between the modelled and reference sequences:

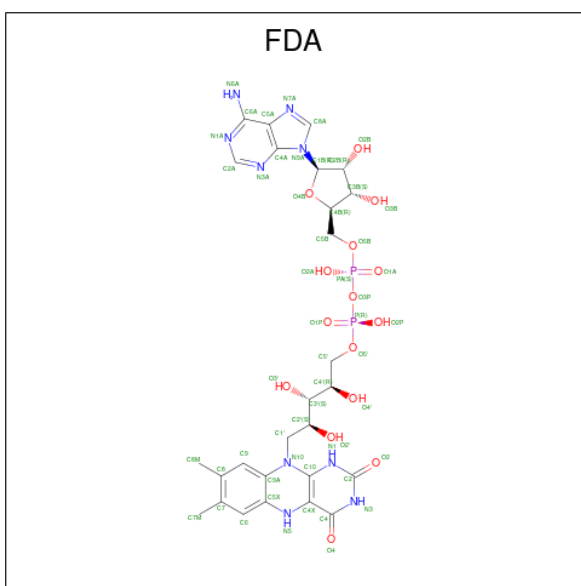
Chain	Residue	Modelled	Actual	Comment	Reference
A	1	MET	-	expression tag	UNP A1R0W1
A	2	VAL	-	expression tag	UNP A1R0W1
A	461	ALA	-	expression tag	UNP A1R0W1
A	462	GLU	-	expression tag	UNP A1R0W1
A	463	ASN	-	expression tag	UNP A1R0W1
A	464	LEU	-	expression tag	UNP A1R0W1
A	465	TYR	-	expression tag	UNP A1R0W1
A	466	PHE	-	expression tag	UNP A1R0W1
A	467	GLN	-	expression tag	UNP A1R0W1
A	468	SER	-	expression tag	UNP A1R0W1
A	469	HIS	-	expression tag	UNP A1R0W1
A	470	HIS	-	expression tag	UNP A1R0W1
A	471	HIS	-	expression tag	UNP A1R0W1
A	472	HIS	-	expression tag	UNP A1R0W1
A	473	HIS	-	expression tag	UNP A1R0W1
A	474	HIS	-	expression tag	UNP A1R0W1
A	475	TRP	-	expression tag	UNP A1R0W1
A	476	SER	-	expression tag	UNP A1R0W1
A	477	HIS	-	expression tag	UNP A1R0W1
A	478	PRO	-	expression tag	UNP A1R0W1
A	479	GLN	-	expression tag	UNP A1R0W1
A	480	PHE	-	expression tag	UNP A1R0W1
A	481	GLU	-	expression tag	UNP A1R0W1
A	482	LYS	-	expression tag	UNP A1R0W1
B	1	MET	-	expression tag	UNP A1R0W1

Continued on next page...

Continued from previous page...

Chain	Residue	Modelled	Actual	Comment	Reference
B	2	VAL	-	expression tag	UNP A1R0W1
B	461	ALA	-	expression tag	UNP A1R0W1
B	462	GLU	-	expression tag	UNP A1R0W1
B	463	ASN	-	expression tag	UNP A1R0W1
B	464	LEU	-	expression tag	UNP A1R0W1
B	465	TYR	-	expression tag	UNP A1R0W1
B	466	PHE	-	expression tag	UNP A1R0W1
B	467	GLN	-	expression tag	UNP A1R0W1
B	468	SER	-	expression tag	UNP A1R0W1
B	469	HIS	-	expression tag	UNP A1R0W1
B	470	HIS	-	expression tag	UNP A1R0W1
B	471	HIS	-	expression tag	UNP A1R0W1
B	472	HIS	-	expression tag	UNP A1R0W1
B	473	HIS	-	expression tag	UNP A1R0W1
B	474	HIS	-	expression tag	UNP A1R0W1
B	475	TRP	-	expression tag	UNP A1R0W1
B	476	SER	-	expression tag	UNP A1R0W1
B	477	HIS	-	expression tag	UNP A1R0W1
B	478	PRO	-	expression tag	UNP A1R0W1
B	479	GLN	-	expression tag	UNP A1R0W1
B	480	PHE	-	expression tag	UNP A1R0W1
B	481	GLU	-	expression tag	UNP A1R0W1
B	482	LYS	-	expression tag	UNP A1R0W1

- Molecule 2 is DIHYDROFLAVINE-ADENINE DINUCLEOTIDE (three-letter code: FDA) (formula: C₂₇H₃₅N₉O₁₅P₂).



Mol	Chain	Residues	Atoms					ZeroOcc	AltConf
2	A	1	Total	C	N	O	P	0	0
			53	27	9	15	2		
2	B	1	Total	C	N	O	P	0	0
			53	27	9	15	2		

- Molecule 3 is GLYCEROL (three-letter code: GOL) (formula: C₃H₈O₃).



Mol	Chain	Residues	Atoms			ZeroOcc	AltConf
3	B	1	Total	C	O	0	0
			6	3	3		

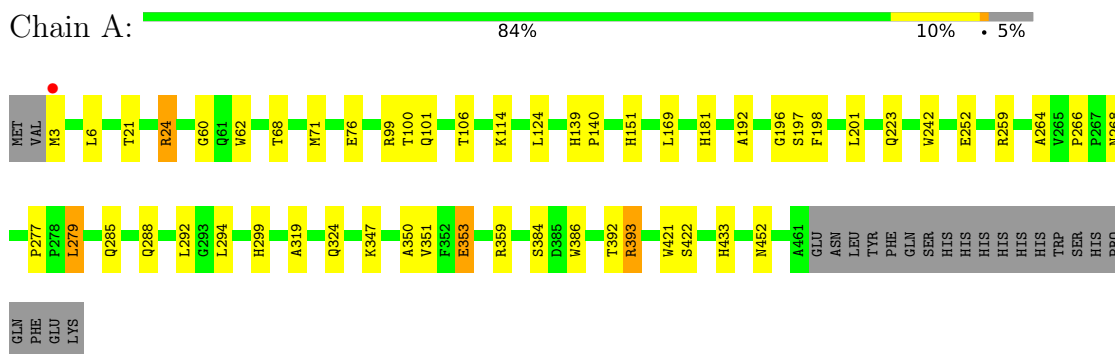
- Molecule 4 is water.

Mol	Chain	Residues	Atoms		ZeroOcc	AltConf
4	A	538	Total	O	0	0
			538	538		
4	B	442	Total	O	0	0
			442	442		

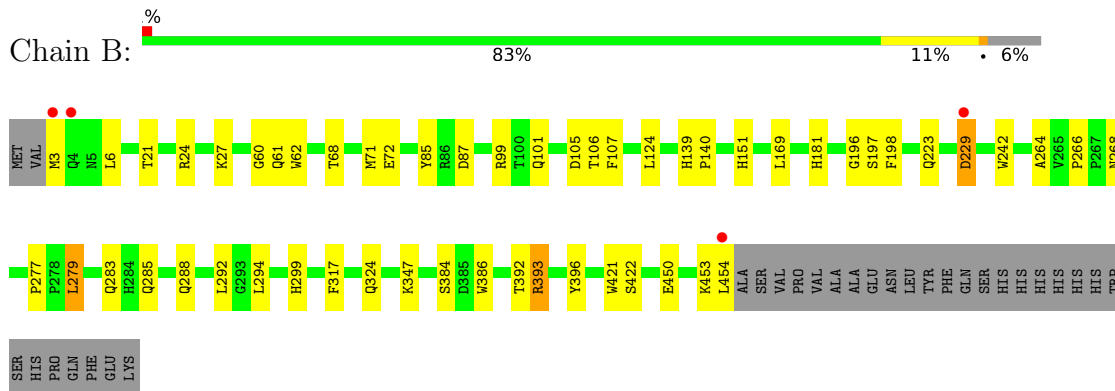
3 Residue-property plots [i](#)

These plots are drawn for all protein, RNA, DNA and oligosaccharide chains in the entry. The first graphic for a chain summarises the proportions of the various outlier classes displayed in the second graphic. The second graphic shows the sequence view annotated by issues in geometry and electron density. Residues are color-coded according to the number of geometric quality criteria for which they contain at least one outlier: green = 0, yellow = 1, orange = 2 and red = 3 or more. A red dot above a residue indicates a poor fit to the electron density ($RSRZ > 2$). Stretches of 2 or more consecutive residues without any outlier are shown as a green connector. Residues present in the sample, but not in the model, are shown in grey.

- Molecule 1: Putrescine oxidase



- Molecule 1: Putrescine oxidase



4 Data and refinement statistics

Property	Value	Source
Space group	P 21 21 21	Depositor
Cell constants a, b, c, α , β , γ	62.64Å 117.91Å 165.86Å 90.00° 90.00° 90.00°	Depositor
Resolution (Å)	49.99 – 2.05 49.99 – 2.05	Depositor EDS
% Data completeness (in resolution range)	96.2 (49.99-2.05) 99.7 (49.99-2.05)	Depositor EDS
R_{merge}	0.11	Depositor
R_{sym}	(Not available)	Depositor
$\langle I/\sigma(I) \rangle$ ¹	2.79 (at 2.05Å)	Xtrriage
Refinement program	PHENIX (phenix.refine)	Depositor
R, R_{free}	0.158 , 0.195 0.159 , 0.194	Depositor DCC
R_{free} test set	3892 reflections (5.03%)	wwPDB-VP
Wilson B-factor (Å ²)	17.0	Xtrriage
Anisotropy	0.631	Xtrriage
Bulk solvent k_{sol} (e/Å ³), B_{sol} (Å ²)	0.37 , 52.9	EDS
L-test for twinning ²	$\langle L \rangle = 0.49$, $\langle L^2 \rangle = 0.32$	Xtrriage
Estimated twinning fraction	No twinning to report.	Xtrriage
F_o, F_c correlation	0.95	EDS
Total number of atoms	8106	wwPDB-VP
Average B, all atoms (Å ²)	18.0	wwPDB-VP

Xtrriage's analysis on translational NCS is as follows: *The largest off-origin peak in the Patterson function is 3.37% of the height of the origin peak. No significant pseudotranslation is detected.*

¹Intensities estimated from amplitudes.

²Theoretical values of $\langle |L| \rangle$, $\langle L^2 \rangle$ for acentric reflections are 0.5, 0.333 respectively for untwinned datasets, and 0.375, 0.2 for perfectly twinned datasets.

5 Model quality [i](#)

5.1 Standard geometry [i](#)

Bond lengths and bond angles in the following residue types are not validated in this section: FDA, GOL

The Z score for a bond length (or angle) is the number of standard deviations the observed value is removed from the expected value. A bond length (or angle) with $|Z| > 5$ is considered an outlier worth inspection. RMSZ is the root-mean-square of all Z scores of the bond lengths (or angles).

Mol	Chain	Bond lengths		Bond angles	
		RMSZ	# Z >5	RMSZ	# Z >5
1	A	0.31	0/3618	0.47	0/4913
1	B	0.29	0/3552	0.47	0/4821
All	All	0.30	0/7170	0.47	0/9734

There are no bond length outliers.

There are no bond angle outliers.

There are no chirality outliers.

There are no planarity outliers.

5.2 Too-close contacts [i](#)

In the following table, the Non-H and H(model) columns list the number of non-hydrogen atoms and hydrogen atoms in the chain respectively. The H(added) column lists the number of hydrogen atoms added and optimized by MolProbity. The Clashes column lists the number of clashes within the asymmetric unit, whereas Symm-Clashes lists symmetry-related clashes.

Mol	Chain	Non-H	H(model)	H(added)	Clashes	Symm-Clashes
1	A	3535	0	3429	57	0
1	B	3479	0	3369	53	0
2	A	53	0	31	10	0
2	B	53	0	31	8	0
3	B	6	0	7	0	0
4	A	538	0	0	10	0
4	B	442	0	0	7	0
All	All	8106	0	6867	105	0

The all-atom clashscore is defined as the number of clashes found per 1000 atoms (including hydrogen atoms). The all-atom clashscore for this structure is 8.

All (105) close contacts within the same asymmetric unit are listed below, sorted by their clash magnitude.

Atom-1	Atom-2	Interatomic distance (Å)	Clash overlap (Å)
1:A:24:ARG:HG3	1:A:24:ARG:HH11	1.41	0.85
1:A:106:THR:HG21	1:A:114:LYS:HD2	1.59	0.83
1:A:259:ARG:HH12	1:A:452:ASN:HD22	1.27	0.83
1:A:24:ARG:HH11	1:A:223:GLN:HE21	1.25	0.81
1:A:68:THR:HA	1:A:71:MET:HE3	1.64	0.78
1:B:24:ARG:HE	1:B:223:GLN:HE21	1.33	0.77
1:B:99:ARG:HH12	1:B:101:GLN:HE21	1.33	0.77
1:A:24:ARG:NH1	1:A:223:GLN:HE21	1.83	0.77
1:A:259:ARG:HH12	1:A:452:ASN:ND2	1.84	0.74
1:B:62:TRP:CD1	2:B:484:FDA:O4	2.41	0.74
1:A:62:TRP:CD1	2:A:483:FDA:O4	2.42	0.73
1:A:24:ARG:HG3	1:A:223:GLN:HE21	1.54	0.71
1:B:68:THR:HA	1:B:71:MET:HE3	1.73	0.70
1:B:169:LEU:HD22	1:B:317:PHE:CE1	2.26	0.70
1:A:24:ARG:HH11	1:A:24:ARG:CG	2.05	0.70
1:A:62:TRP:CH2	4:A:873:HOH:O	2.46	0.68
1:A:106:THR:HG21	1:A:114:LYS:CD	2.24	0.67
1:A:288:GLN:NE2	1:B:292:LEU:H	1.93	0.66
1:B:60:GLY:HA2	2:B:484:FDA:C4X	2.24	0.66
1:B:324:GLN:HE21	1:B:347:LYS:NZ	1.93	0.66
1:A:60:GLY:HA2	2:A:483:FDA:C4X	2.26	0.66
1:A:62:TRP:HH2	4:A:873:HOH:O	1.77	0.66
1:A:350:ALA:O	1:A:353:GLU:HB2	1.97	0.65
1:B:169:LEU:HD22	1:B:317:PHE:HE1	1.62	0.64
1:A:279:LEU:HD11	1:A:421:TRP:CZ2	2.35	0.62
1:A:288:GLN:HE22	1:B:292:LEU:H	1.50	0.59
1:B:62:TRP:CH2	4:B:713:HOH:O	2.52	0.59
1:B:62:TRP:HH2	4:B:713:HOH:O	1.86	0.58
1:A:264:ALA:HA	1:A:422:SER:O	2.03	0.58
1:A:169:LEU:HD12	1:A:319:ALA:HA	1.85	0.58
1:B:3:MET:O	1:B:3:MET:HG3	2.02	0.58
1:B:279:LEU:HD11	1:B:421:TRP:CZ2	2.40	0.57
1:B:279:LEU:HD12	1:B:283:GLN:HB3	1.85	0.57
1:A:99:ARG:HH22	1:A:101:GLN:HE21	1.51	0.57
1:A:24:ARG:NH1	1:A:223:GLN:NE2	2.53	0.56
1:B:229:ASP:HB3	4:B:912:HOH:O	2.06	0.56
1:A:62:TRP:HD1	2:A:483:FDA:O4	1.88	0.55
1:B:105:ASP:HB3	4:B:617:HOH:O	2.06	0.54
1:B:62:TRP:HD1	2:B:484:FDA:O4	1.88	0.54
1:A:324:GLN:HE21	1:A:347:LYS:NZ	2.06	0.53

Continued on next page...

Continued from previous page...

Atom-1	Atom-2	Interatomic distance (Å)	Clash overlap (Å)
1:A:24:ARG:HH11	1:A:223:GLN:NE2	2.03	0.53
1:A:292:LEU:H	1:B:288:GLN:NE2	2.06	0.53
1:A:24:ARG:HG3	1:A:223:GLN:NE2	2.23	0.53
1:A:279:LEU:HD11	1:A:421:TRP:CH2	2.44	0.53
1:B:24:ARG:NE	1:B:223:GLN:HE21	2.05	0.52
1:B:299:HIS:HE1	1:B:384:SER:OG	1.92	0.52
1:B:60:GLY:HA2	2:B:484:FDA:N5	2.24	0.52
1:B:264:ALA:HA	1:B:422:SER:O	2.09	0.52
1:B:324:GLN:HE21	1:B:347:LYS:HZ1	1.59	0.51
1:A:299:HIS:HE1	1:A:384:SER:OG	1.94	0.51
1:B:21:THR:HA	1:B:223:GLN:HE22	1.75	0.50
1:B:139:HIS:CG	1:B:140:PRO:HD2	2.46	0.50
1:A:324:GLN:HE21	1:A:347:LYS:HZ1	1.60	0.50
1:A:433:HIS:HB3	2:A:483:FDA:O2	2.12	0.49
1:A:266:PRO:HB2	1:A:268:ASN:OD1	2.13	0.49
1:B:181:HIS:HD2	4:B:923:HOH:O	1.96	0.49
1:B:279:LEU:HD12	1:B:283:GLN:CB	2.42	0.49
1:B:169:LEU:C	1:B:169:LEU:HD23	2.33	0.48
1:A:21:THR:HA	1:A:223:GLN:HE22	1.77	0.48
2:A:483:FDA:C2	4:A:615:HOH:O	2.61	0.48
1:A:386:TRP:CD1	2:A:483:FDA:HM83	2.49	0.48
1:A:181:HIS:HD2	4:A:565:HOH:O	1.96	0.48
1:A:181:HIS:HE1	4:A:653:HOH:O	1.96	0.48
1:A:292:LEU:H	1:B:288:GLN:HE22	1.62	0.47
1:B:242:TRP:NE1	1:B:277:PRO:HD2	2.29	0.47
1:A:24:ARG:NH1	1:A:24:ARG:CG	2.72	0.47
1:A:386:TRP:CD1	2:A:483:FDA:HM71	2.50	0.47
1:B:151:HIS:HD2	4:B:880:HOH:O	1.95	0.47
1:B:242:TRP:CE2	1:B:277:PRO:HD2	2.50	0.47
1:A:151:HIS:HD2	4:A:750:HOH:O	1.97	0.47
1:A:242:TRP:CE2	1:A:277:PRO:HD2	2.51	0.46
1:A:294:LEU:HB2	1:B:285:GLN:NE2	2.30	0.45
1:B:61:GLN:H	2:B:484:FDA:C4	2.29	0.45
1:A:60:GLY:HA2	2:A:483:FDA:N5	2.30	0.45
1:B:196:GLY:O	1:B:197:SER:HB3	2.17	0.45
1:B:386:TRP:CD1	2:B:484:FDA:HM83	2.51	0.45
1:A:76[A]:GLU:HG3	4:A:706:HOH:O	2.17	0.44
1:A:392:THR:O	1:A:393:ARG:HB2	2.17	0.44
1:A:60:GLY:HA2	2:A:483:FDA:C5X	2.48	0.44
1:B:27:LYS:HE2	1:B:27:LYS:HB3	1.87	0.44
1:B:450:GLU:O	1:B:453:LYS:HG2	2.18	0.43

Continued on next page...

Continued from previous page...

Atom-1	Atom-2	Interatomic distance (Å)	Clash overlap (Å)
1:B:99:ARG:NH1	1:B:101:GLN:HE21	2.07	0.43
1:A:285:GLN:NE2	1:B:294:LEU:HB2	2.33	0.43
1:A:139:HIS:CG	1:A:140:PRO:HD2	2.54	0.43
1:B:279:LEU:HD11	1:B:421:TRP:HZ2	1.84	0.43
4:A:520:HOH:O	1:B:181:HIS:HE1	1.99	0.43
1:B:450:GLU:O	1:B:454:LEU:HD13	2.18	0.43
1:A:196:GLY:O	1:A:197:SER:HB3	2.18	0.42
1:B:85:TYR:CZ	1:B:87:ASP:HB2	2.54	0.42
1:B:279:LEU:CD1	1:B:283:GLN:HG2	2.49	0.42
1:A:259:ARG:NH1	1:A:452:ASN:ND2	2.62	0.42
1:B:396:TYR:HD1	2:B:484:FDA:C7	2.33	0.42
1:A:151:HIS:CD2	4:A:750:HOH:O	2.72	0.41
1:B:266:PRO:HB2	1:B:268:ASN:OD1	2.19	0.41
1:B:106:THR:HG22	1:B:107:PHE:O	2.21	0.41
1:B:124:LEU:HD13	1:B:198:PHE:CE1	2.55	0.41
1:B:392:THR:O	1:B:393:ARG:HB2	2.20	0.41
1:A:351:VAL:HG22	1:A:359:ARG:HG3	2.02	0.41
1:A:279:LEU:HD11	1:A:421:TRP:HZ2	1.84	0.41
1:A:181:HIS:CD2	4:A:565:HOH:O	2.73	0.41
1:B:72:GLU:HG3	4:B:572:HOH:O	2.21	0.41
1:A:124:LEU:HD13	1:A:198:PHE:CE1	2.55	0.40
1:A:192:ALA:HA	1:A:201:LEU:HD11	2.03	0.40
1:A:386:TRP:CE2	2:A:483:FDA:HM82	2.57	0.40
1:B:386:TRP:CD1	2:B:484:FDA:HM71	2.56	0.40

There are no symmetry-related clashes.

5.3 Torsion angles [i](#)

5.3.1 Protein backbone [i](#)

In the following table, the Percentiles column shows the percent Ramachandran outliers of the chain as a percentile score with respect to all X-ray entries followed by that with respect to entries of similar resolution.

The Analysed column shows the number of residues for which the backbone conformation was analysed, and the total number of residues.

Mol	Chain	Analysed	Favoured	Allowed	Outliers	Percentiles
1	A	460/482 (95%)	443 (96%)	16 (4%)	1 (0%)	47 39

Continued on next page...

Continued from previous page...

Mol	Chain	Analysed	Favoured	Allowed	Outliers	Percentiles	
1	B	450/482 (93%)	430 (96%)	19 (4%)	1 (0%)	47	39
All	All	910/964 (94%)	873 (96%)	35 (4%)	2 (0%)	47	39

All (2) Ramachandran outliers are listed below:

Mol	Chain	Res	Type
1	A	393	ARG
1	B	393	ARG

5.3.2 Protein sidechains [i](#)

In the following table, the Percentiles column shows the percent sidechain outliers of the chain as a percentile score with respect to all X-ray entries followed by that with respect to entries of similar resolution.

The Analysed column shows the number of residues for which the sidechain conformation was analysed, and the total number of residues.

Mol	Chain	Analysed	Rotameric	Outliers	Percentiles	
1	A	370/390 (95%)	363 (98%)	7 (2%)	57	53
1	B	363/390 (93%)	360 (99%)	3 (1%)	81	81
All	All	733/780 (94%)	723 (99%)	10 (1%)	67	64

All (10) residues with a non-rotameric sidechain are listed below:

Mol	Chain	Res	Type
1	A	3	MET
1	A	6	LEU
1	A	24	ARG
1	A	100	THR
1	A	252	GLU
1	A	279	LEU
1	A	353	GLU
1	B	6	LEU
1	B	229	ASP
1	B	279	LEU

Sometimes sidechains can be flipped to improve hydrogen bonding and reduce clashes. All (20) such sidechains are listed below:

Mol	Chain	Res	Type
1	A	4	GLN
1	A	101	GLN
1	A	151	HIS
1	A	181	HIS
1	A	218	GLN
1	A	223	GLN
1	A	285	GLN
1	A	288	GLN
1	A	299	HIS
1	A	324	GLN
1	A	452	ASN
1	B	101	GLN
1	B	151	HIS
1	B	181	HIS
1	B	223	GLN
1	B	257	ASN
1	B	285	GLN
1	B	288	GLN
1	B	299	HIS
1	B	324	GLN

5.3.3 RNA [i](#)

There are no RNA molecules in this entry.

5.4 Non-standard residues in protein, DNA, RNA chains [i](#)

There are no non-standard protein/DNA/RNA residues in this entry.

5.5 Carbohydrates [i](#)

There are no monosaccharides in this entry.

5.6 Ligand geometry [i](#)

3 ligands are modelled in this entry.

In the following table, the Counts columns list the number of bonds (or angles) for which Mogul statistics could be retrieved, the number of bonds (or angles) that are observed in the model and the number of bonds (or angles) that are defined in the Chemical Component Dictionary. The Link column lists molecule types, if any, to which the group is linked. The Z score for a bond

length (or angle) is the number of standard deviations the observed value is removed from the expected value. A bond length (or angle) with $|Z| > 2$ is considered an outlier worth inspection. RMSZ is the root-mean-square of all Z scores of the bond lengths (or angles).

Mol	Type	Chain	Res	Link	Bond lengths			Bond angles		
					Counts	RMSZ	# Z > 2	Counts	RMSZ	# Z > 2
3	GOL	B	483	-	5,5,5	2.20	1 (20%)	5,5,5	1.88	1 (20%)
2	FDA	B	484	-	52,58,58	4.46	20 (38%)	60,89,89	2.07	18 (30%)
2	FDA	A	483	-	52,58,58	4.44	21 (40%)	60,89,89	2.11	19 (31%)

In the following table, the Chirals column lists the number of chiral outliers, the number of chiral centers analysed, the number of these observed in the model and the number defined in the Chemical Component Dictionary. Similar counts are reported in the Torsion and Rings columns. '-' means no outliers of that kind were identified.

Mol	Type	Chain	Res	Link	Chirals	Torsions	Rings
3	GOL	B	483	-	-	2/4/4/4	-
2	FDA	B	484	-	-	3/30/50/50	0/6/6/6
2	FDA	A	483	-	-	4/30/50/50	0/6/6/6

All (42) bond length outliers are listed below:

Mol	Chain	Res	Type	Atoms	Z	Observed(Å)	Ideal(Å)
2	B	484	FDA	C9-C8	12.47	1.57	1.39
2	A	483	FDA	C9-C8	12.31	1.57	1.39
2	B	484	FDA	C6-C7	12.27	1.57	1.39
2	A	483	FDA	C6-C7	12.11	1.57	1.39
2	B	484	FDA	O2'-C2'	-11.89	1.18	1.43
2	A	483	FDA	O2'-C2'	-11.69	1.18	1.43
2	A	483	FDA	C5X-C9A	8.90	1.50	1.40
2	B	484	FDA	C5X-C9A	8.80	1.50	1.40
2	B	484	FDA	O4-C4	8.46	1.39	1.23
2	A	483	FDA	C9-C9A	8.39	1.53	1.39
2	B	484	FDA	C9-C9A	8.34	1.53	1.39
2	A	483	FDA	O2-C2	8.26	1.40	1.23
2	B	484	FDA	O2-C2	8.18	1.40	1.23
2	B	484	FDA	C8-C7	8.16	1.61	1.40
2	A	483	FDA	O4-C4	8.15	1.39	1.23
2	A	483	FDA	C8-C7	8.11	1.61	1.40
2	A	483	FDA	C6-C5X	7.51	1.51	1.39
2	B	484	FDA	C6-C5X	7.37	1.51	1.39
2	A	483	FDA	C2A-N3A	5.33	1.40	1.32
2	B	484	FDA	C2A-N3A	5.12	1.40	1.32

Continued on next page...

Continued from previous page...

Mol	Chain	Res	Type	Atoms	Z	Observed(Å)	Ideal(Å)
3	B	483	GOL	C3-C2	-4.76	1.32	1.51
2	A	483	FDA	C8A-N7A	4.57	1.42	1.34
2	B	484	FDA	C8A-N7A	4.56	1.42	1.34
2	B	484	FDA	P-O1P	4.05	1.65	1.50
2	B	484	FDA	PA-O1A	4.03	1.65	1.50
2	A	483	FDA	PA-O1A	3.92	1.64	1.50
2	A	483	FDA	P-O1P	3.82	1.64	1.50
2	A	483	FDA	C10-N1	3.70	1.44	1.37
2	B	484	FDA	C10-N1	3.65	1.43	1.37
2	A	483	FDA	C2B-C1B	-3.13	1.49	1.53
2	B	484	FDA	C6A-N6A	3.04	1.45	1.34
2	B	484	FDA	C2B-C1B	-3.03	1.49	1.53
2	A	483	FDA	C6A-N6A	3.01	1.45	1.34
2	A	483	FDA	C3B-C4B	2.67	1.59	1.53
2	A	483	FDA	C1'-C2'	2.58	1.56	1.52
2	B	484	FDA	C3B-C4B	2.52	1.59	1.53
2	B	484	FDA	C1'-C2'	2.48	1.56	1.52
2	B	484	FDA	C2-N1	2.45	1.41	1.37
2	B	484	FDA	C4X-C4	2.41	1.48	1.42
2	A	483	FDA	C2-N1	2.37	1.41	1.37
2	A	483	FDA	C4X-C4	2.13	1.47	1.42
2	A	483	FDA	C5A-C4A	-2.06	1.35	1.40

All (38) bond angle outliers are listed below:

Mol	Chain	Res	Type	Atoms	Z	Observed(°)	Ideal(°)
2	A	483	FDA	N3A-C2A-N1A	-5.77	119.66	128.68
2	B	484	FDA	N3A-C2A-N1A	-5.71	119.75	128.68
2	A	483	FDA	O2'-C2'-C1'	4.72	121.22	109.80
2	B	484	FDA	O2'-C2'-C1'	4.59	120.89	109.80
2	B	484	FDA	C4-N3-C2	-4.39	120.01	126.34
2	B	484	FDA	O2'-C2'-C3'	4.38	119.76	109.10
2	A	483	FDA	C4-N3-C2	-4.32	120.12	126.34
2	B	484	FDA	C8M-C8-C9	-4.19	111.74	119.49
2	A	483	FDA	O2'-C2'-C3'	4.05	118.95	109.10
2	A	483	FDA	C1B-N9A-C4A	-3.82	119.93	126.64
2	A	483	FDA	C8M-C8-C9	-3.73	112.59	119.49
2	A	483	FDA	P-O3P-PA	-3.55	120.64	132.83
2	B	484	FDA	P-O3P-PA	-3.46	120.96	132.83
2	A	483	FDA	O4-C4-C4X	-3.27	119.75	127.24
2	A	483	FDA	O4B-C1B-C2B	3.22	111.63	106.93
2	B	484	FDA	O4'-C4'-C3'	3.21	116.91	109.10

Continued on next page...

Continued from previous page...

Mol	Chain	Res	Type	Atoms	Z	Observed(°)	Ideal(°)
2	A	483	FDA	C9A-C5X-N5	-3.16	115.33	119.56
2	B	484	FDA	C1B-N9A-C4A	-3.10	121.19	126.64
2	B	484	FDA	C9A-C5X-N5	-3.10	115.41	119.56
2	B	484	FDA	O4-C4-C4X	-3.07	120.20	127.24
2	A	483	FDA	O4'-C4'-C3'	2.81	115.94	109.10
2	B	484	FDA	O4B-C4B-C5B	2.79	118.54	109.37
2	A	483	FDA	O4B-C4B-C5B	2.78	118.51	109.37
2	B	484	FDA	C8M-C8-C7	-2.75	115.11	120.74
2	B	484	FDA	N3-C2-N1	2.72	120.18	115.80
2	A	483	FDA	N3-C2-N1	2.72	120.17	115.80
2	A	483	FDA	C7M-C7-C6	-2.71	114.48	119.49
2	A	483	FDA	C4X-C4-N3	2.64	120.16	112.31
2	B	484	FDA	C4X-C4-N3	2.63	120.13	112.31
2	A	483	FDA	C8M-C8-C7	-2.58	115.45	120.74
2	B	484	FDA	C9-C8-C7	-2.54	116.03	119.67
2	B	484	FDA	O5'-C5'-C4'	2.37	115.70	109.36
2	A	483	FDA	C6-C5X-N5	2.36	124.10	119.84
2	B	484	FDA	O4B-C1B-C2B	2.28	110.25	106.93
2	A	483	FDA	C1'-C2'-C3'	2.21	115.98	109.79
2	A	483	FDA	C5'-C4'-C3'	-2.16	108.03	112.20
2	B	484	FDA	C1'-C2'-C3'	2.16	115.83	109.79
3	B	483	GOL	O2-C2-C3	2.15	118.59	109.12

There are no chirality outliers.

All (9) torsion outliers are listed below:

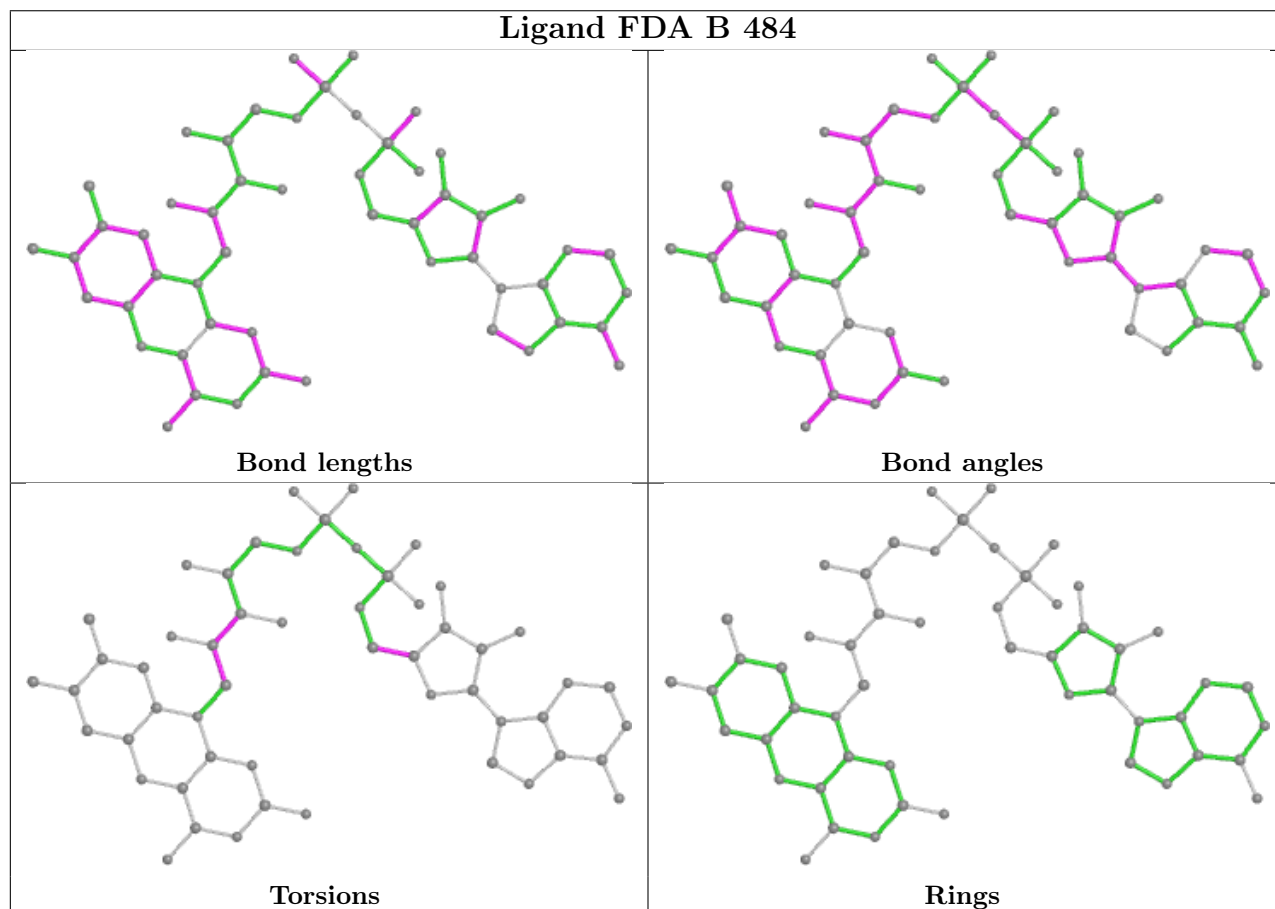
Mol	Chain	Res	Type	Atoms
2	A	483	FDA	N10-C1'-C2'-O2'
2	B	484	FDA	N10-C1'-C2'-O2'
3	B	483	GOL	O2-C2-C3-O3
2	A	483	FDA	O2'-C2'-C3'-C4'
2	B	484	FDA	O2'-C2'-C3'-C4'
3	B	483	GOL	O1-C1-C2-O2
2	A	483	FDA	C5'-O5'-P-O3P
2	A	483	FDA	O4B-C4B-C5B-O5B
2	B	484	FDA	O4B-C4B-C5B-O5B

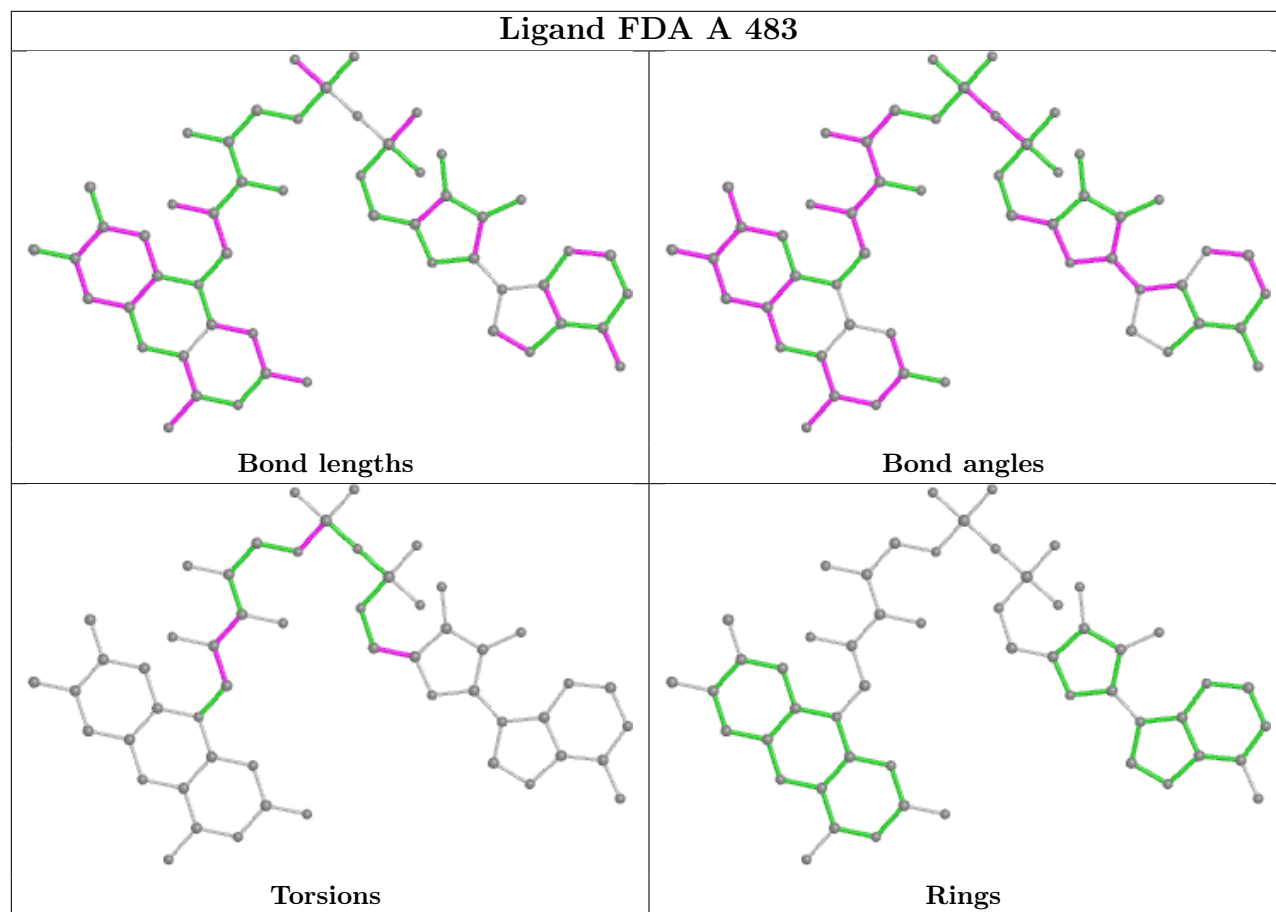
There are no ring outliers.

2 monomers are involved in 18 short contacts:

Mol	Chain	Res	Type	Clashes	Symm-Clashes
2	B	484	FDA	8	0
2	A	483	FDA	10	0

The following is a two-dimensional graphical depiction of Mogul quality analysis of bond lengths, bond angles, torsion angles, and ring geometry for all instances of the Ligand of Interest. In addition, ligands with molecular weight > 250 and outliers as shown on the validation Tables will also be included. For torsion angles, if less than 5% of the Mogul distribution of torsion angles is within 10 degrees of the torsion angle in question, then that torsion angle is considered an outlier. Any bond that is central to one or more torsion angles identified as an outlier by Mogul will be highlighted in the graph. For rings, the root-mean-square deviation (RMSD) between the ring in question and similar rings identified by Mogul is calculated over all ring torsion angles. If the average RMSD is greater than 60 degrees and the minimal RMSD between the ring in question and any Mogul-identified rings is also greater than 60 degrees, then that ring is considered an outlier. The outliers are highlighted in purple. The color gray indicates Mogul did not find sufficient equivalents in the CSD to analyse the geometry.





5.7 Other polymers [i](#)

There are no such residues in this entry.

5.8 Polymer linkage issues [i](#)

There are no chain breaks in this entry.

6 Fit of model and data [i](#)

6.1 Protein, DNA and RNA chains [i](#)

In the following table, the column labelled ‘#RSRZ> 2’ contains the number (and percentage) of RSRZ outliers, followed by percent RSRZ outliers for the chain as percentile scores relative to all X-ray entries and entries of similar resolution. The OWAB column contains the minimum, median, 95th percentile and maximum values of the occupancy-weighted average B-factor per residue. The column labelled ‘Q< 0.9’ lists the number of (and percentage) of residues with an average occupancy less than 0.9.

Mol	Chain	Analysed	<RSRZ>	#RSRZ>2	OWAB(Å ²)	Q<0.9
1	A	459/482 (95%)	-0.28	1 (0%) 95 95	8, 15, 29, 43	0
1	B	452/482 (93%)	-0.18	4 (0%) 84 85	9, 17, 31, 56	0
All	All	911/964 (94%)	-0.23	5 (0%) 91 91	8, 16, 30, 56	0

All (5) RSRZ outliers are listed below:

Mol	Chain	Res	Type	RSRZ
1	B	454	LEU	6.1
1	B	3	MET	3.9
1	A	3	MET	3.6
1	B	4	GLN	3.1
1	B	229	ASP	2.3

6.2 Non-standard residues in protein, DNA, RNA chains [i](#)

There are no non-standard protein/DNA/RNA residues in this entry.

6.3 Carbohydrates [i](#)

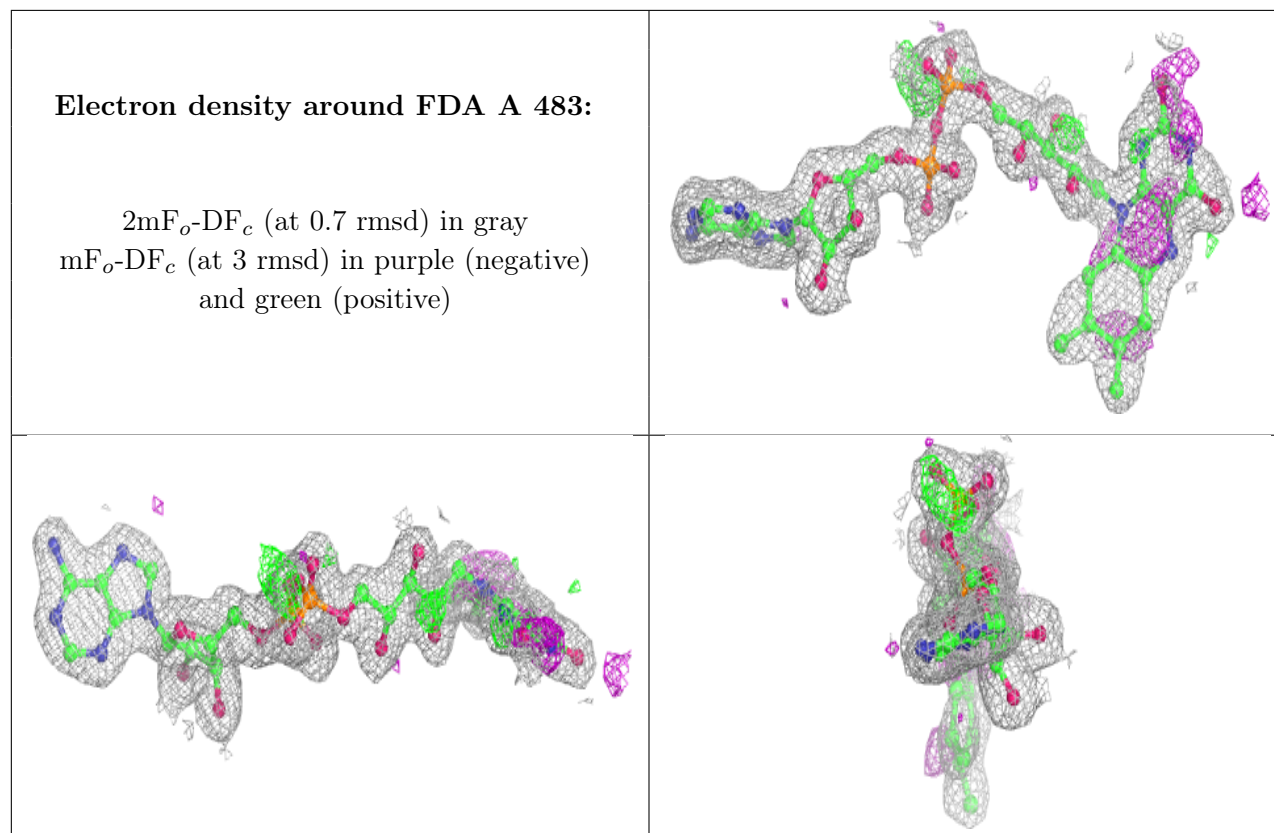
There are no monosaccharides in this entry.

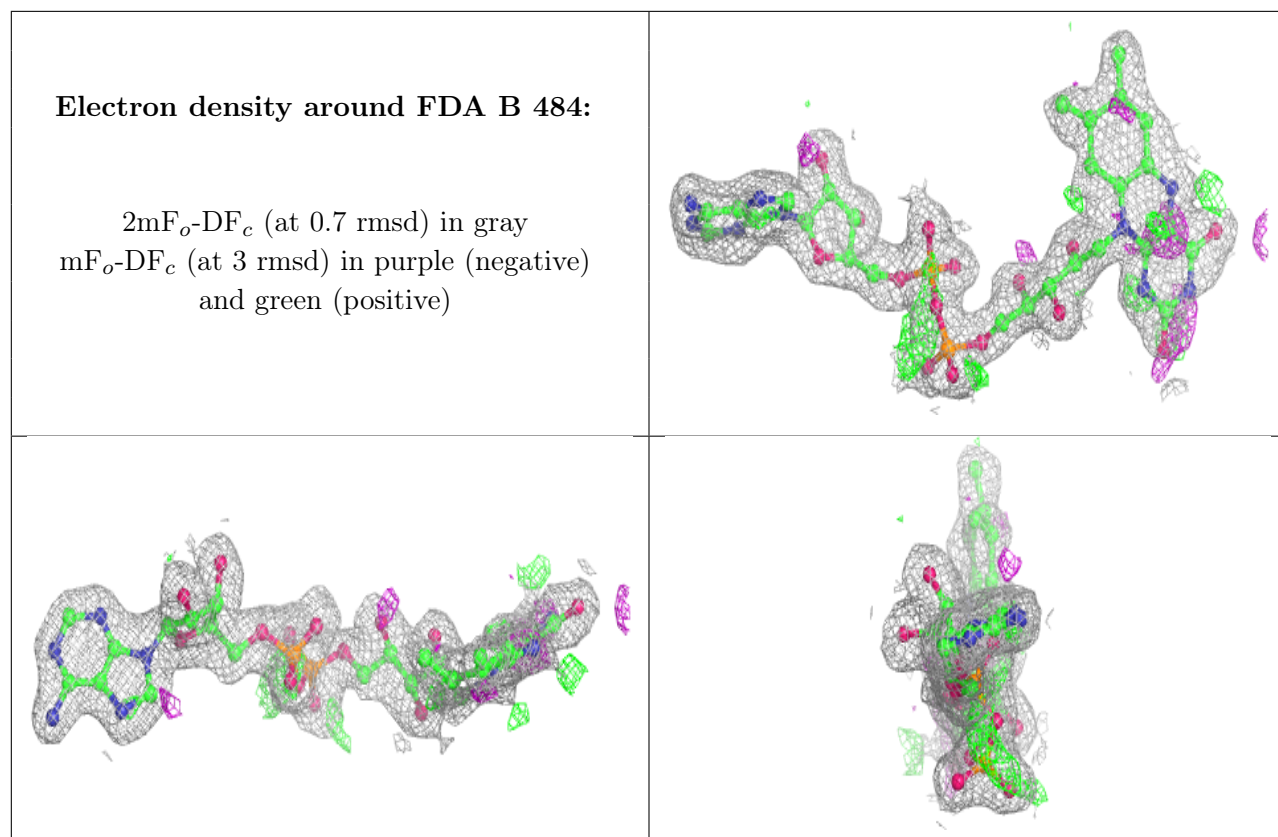
6.4 Ligands [i](#)

In the following table, the Atoms column lists the number of modelled atoms in the group and the number defined in the chemical component dictionary. The B-factors column lists the minimum, median, 95th percentile and maximum values of B factors of atoms in the group. The column labelled ‘Q< 0.9’ lists the number of atoms with occupancy less than 0.9.

Mol	Type	Chain	Res	Atoms	RSCC	RSR	B-factors(\AA^2)	Q<0.9
2	FDA	A	483	53/53	0.96	0.13	7,13,26,31	0
2	FDA	B	484	53/53	0.96	0.14	10,16,28,33	0
3	GOL	B	483	6/6	0.96	0.18	20,21,21,22	0

The following is a graphical depiction of the model fit to experimental electron density of all instances of the Ligand of Interest. In addition, ligands with molecular weight > 250 and outliers as shown on the geometry validation Tables will also be included. Each fit is shown from different orientation to approximate a three-dimensional view.





6.5 Other polymers [i](#)

There are no such residues in this entry.