



Full wwPDB X-ray Structure Validation Report ⓘ

Feb 17, 2024 – 10:12 PM EST

PDB ID : 3UKK
Title : Crystal structure of R182K-UDP-galactopuranose mutase from *Aspergillus fumigatus* in complex with UDPgalp
Authors : Van Straaten, K.E.; Sanders, D.A.R.
Deposited on : 2011-11-09
Resolution : 2.75 Å(reported)

This is a Full wwPDB X-ray Structure Validation Report for a publicly released PDB entry.

We welcome your comments at validation@mail.wwpdb.org

A user guide is available at

<https://www.wwpdb.org/validation/2017/XrayValidationReportHelp>

with specific help available everywhere you see the ⓘ symbol.

The types of validation reports are described at

<http://www.wwpdb.org/validation/2017/FAQs#types>.

The following versions of software and data (see [references ⓘ](#)) were used in the production of this report:

MolProbity : 4.02b-467
Mogul : 1.8.5 (274361), CSD as541be (2020)
Xtriage (Phenix) : 1.13
EDS : 2.36
buster-report : 1.1.7 (2018)
Percentile statistics : 20191225.v01 (using entries in the PDB archive December 25th 2019)
Refmac : 5.8.0158
CCP4 : 7.0.044 (Gargrove)
Ideal geometry (proteins) : Engh & Huber (2001)
Ideal geometry (DNA, RNA) : Parkinson et al. (1996)
Validation Pipeline (wwPDB-VP) : 2.36

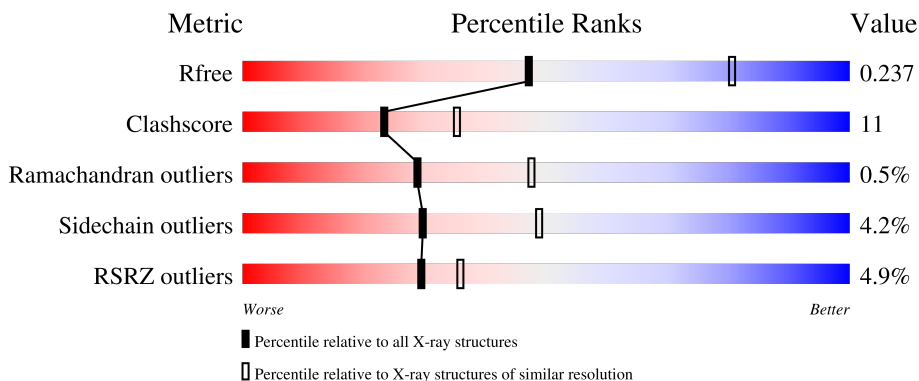
1 Overall quality at a glance

The following experimental techniques were used to determine the structure:

X-RAY DIFFRACTION

The reported resolution of this entry is 2.75 Å.

Percentile scores (ranging between 0-100) for global validation metrics of the entry are shown in the following graphic. The table shows the number of entries on which the scores are based.



Metric	Whole archive (#Entries)	Similar resolution (#Entries, resolution range(Å))
R_{free}	130704	1235 (2.78-2.74)
Clashscore	141614	1277 (2.78-2.74)
Ramachandran outliers	138981	1257 (2.78-2.74)
Sidechain outliers	138945	1257 (2.78-2.74)
RSRZ outliers	127900	1207 (2.78-2.74)

The table below summarises the geometric issues observed across the polymeric chains and their fit to the electron density. The red, orange, yellow and green segments of the lower bar indicate the fraction of residues that contain outliers for ≥ 3 , 2, 1 and 0 types of geometric quality criteria respectively. A grey segment represents the fraction of residues that are not modelled. The numeric value for each fraction is indicated below the corresponding segment, with a dot representing fractions $\leq 5\%$. The upper red bar (where present) indicates the fraction of residues that have poor fit to the electron density. The numeric value is given above the bar.

Mol	Chain	Length	Quality of chain
1	A	517	 4% 78% 21% .
1	B	517	 4% 74% 23% ..
1	C	517	 8% 72% 26% .
1	D	517	 4% 73% 24% ..

2 Entry composition [i](#)

There are 5 unique types of molecules in this entry. The entry contains 16649 atoms, of which 0 are hydrogens and 0 are deuteriums.

In the tables below, the ZeroOcc column contains the number of atoms modelled with zero occupancy, the AltConf column contains the number of residues with at least one atom in alternate conformation and the Trace column contains the number of residues modelled with at most 2 atoms.

- Molecule 1 is a protein called UDP-galactopyranose mutase.

Mol	Chain	Residues	Atoms					ZeroOcc	AltConf	Trace
			Total	C	N	O	S			
1	A	517	4071	2581	704	765	21	0	0	0
1	B	510	4002	2540	685	756	21	0	0	0
1	C	516	4061	2575	701	764	21	0	0	0
1	D	513	4031	2557	692	761	21	0	0	0

There are 36 discrepancies between the modelled and reference sequences:

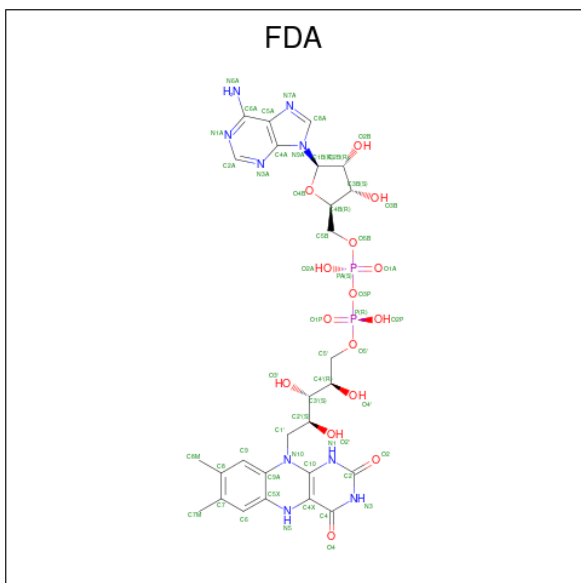
Chain	Residue	Modelled	Actual	Comment	Reference
A	182	LYS	ARG	engineered mutation	UNP Q4W1X2
A	511	LEU	-	expression tag	UNP Q4W1X2
A	512	GLU	-	expression tag	UNP Q4W1X2
A	513	HIS	-	expression tag	UNP Q4W1X2
A	514	HIS	-	expression tag	UNP Q4W1X2
A	515	HIS	-	expression tag	UNP Q4W1X2
A	516	HIS	-	expression tag	UNP Q4W1X2
A	517	HIS	-	expression tag	UNP Q4W1X2
A	518	HIS	-	expression tag	UNP Q4W1X2
B	182	LYS	ARG	engineered mutation	UNP Q4W1X2
B	511	LEU	-	expression tag	UNP Q4W1X2
B	512	GLU	-	expression tag	UNP Q4W1X2
B	513	HIS	-	expression tag	UNP Q4W1X2
B	514	HIS	-	expression tag	UNP Q4W1X2
B	515	HIS	-	expression tag	UNP Q4W1X2
B	516	HIS	-	expression tag	UNP Q4W1X2
B	517	HIS	-	expression tag	UNP Q4W1X2
B	518	HIS	-	expression tag	UNP Q4W1X2
C	182	LYS	ARG	engineered mutation	UNP Q4W1X2
C	511	LEU	-	expression tag	UNP Q4W1X2
C	512	GLU	-	expression tag	UNP Q4W1X2

Continued on next page...

Continued from previous page...

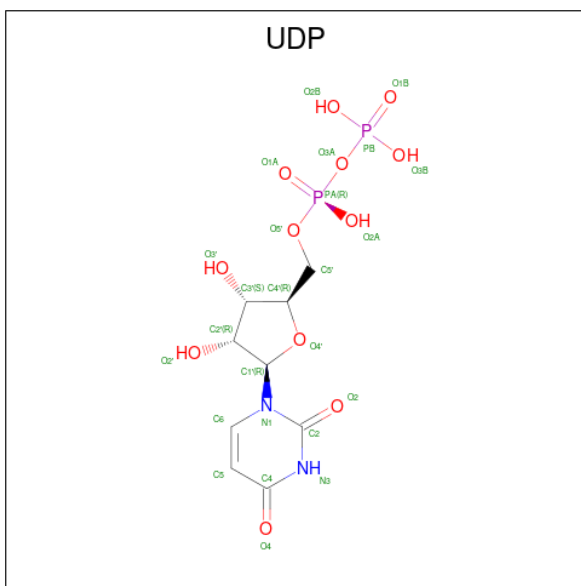
Chain	Residue	Modelled	Actual	Comment	Reference
C	513	HIS	-	expression tag	UNP Q4W1X2
C	514	HIS	-	expression tag	UNP Q4W1X2
C	515	HIS	-	expression tag	UNP Q4W1X2
C	516	HIS	-	expression tag	UNP Q4W1X2
C	517	HIS	-	expression tag	UNP Q4W1X2
C	518	HIS	-	expression tag	UNP Q4W1X2
D	182	LYS	ARG	engineered mutation	UNP Q4W1X2
D	511	LEU	-	expression tag	UNP Q4W1X2
D	512	GLU	-	expression tag	UNP Q4W1X2
D	513	HIS	-	expression tag	UNP Q4W1X2
D	514	HIS	-	expression tag	UNP Q4W1X2
D	515	HIS	-	expression tag	UNP Q4W1X2
D	516	HIS	-	expression tag	UNP Q4W1X2
D	517	HIS	-	expression tag	UNP Q4W1X2
D	518	HIS	-	expression tag	UNP Q4W1X2

- Molecule 2 is DIHYDROFLAVINE-ADENINE DINUCLEOTIDE (three-letter code: FDA) (formula: C₂₇H₃₅N₉O₁₅P₂).



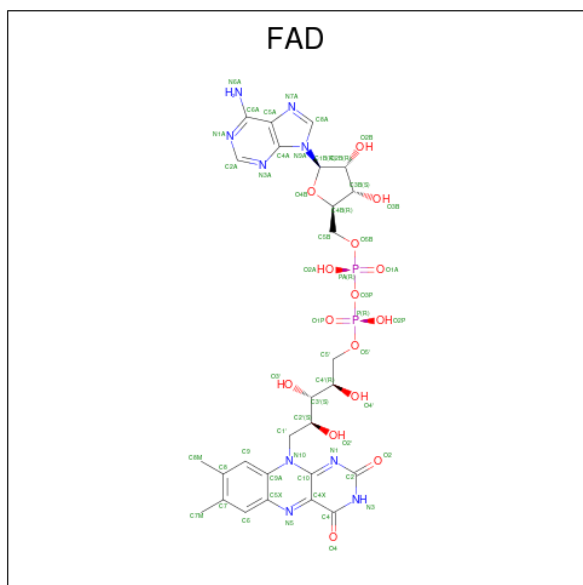
Mol	Chain	Residues	Atoms				ZeroOcc	AltConf	
			Total	C	N	O			P
2	A	1	53	27	9	15	2	0	0
2	B	1	53	27	9	15	2	0	0
2	D	1	53	27	9	15	2	0	0

- Molecule 3 is URIDINE-5'-DIPHOSPHATE (three-letter code: UDP) (formula: $C_9H_{14}N_2O_{12}P_2$).



Mol	Chain	Residues	Atoms					ZeroOcc	AltConf	
			Total	C	N	O	P			
3	A	1	Total	25	9	2	12	2	0	0
3	B	1	Total	25	9	2	12	2	0	0
3	C	1	Total	25	9	2	12	2	0	0
3	D	1	Total	25	9	2	12	2	0	0

- Molecule 4 is FLAVIN-ADENINE DINUCLEOTIDE (three-letter code: FAD) (formula: $C_{27}H_{33}N_9O_{15}P_2$).



Mol	Chain	Residues	Atoms					ZeroOcc	AltConf
			Total	C	N	O	P		
4	C	1	53	27	9	15	2	0	0

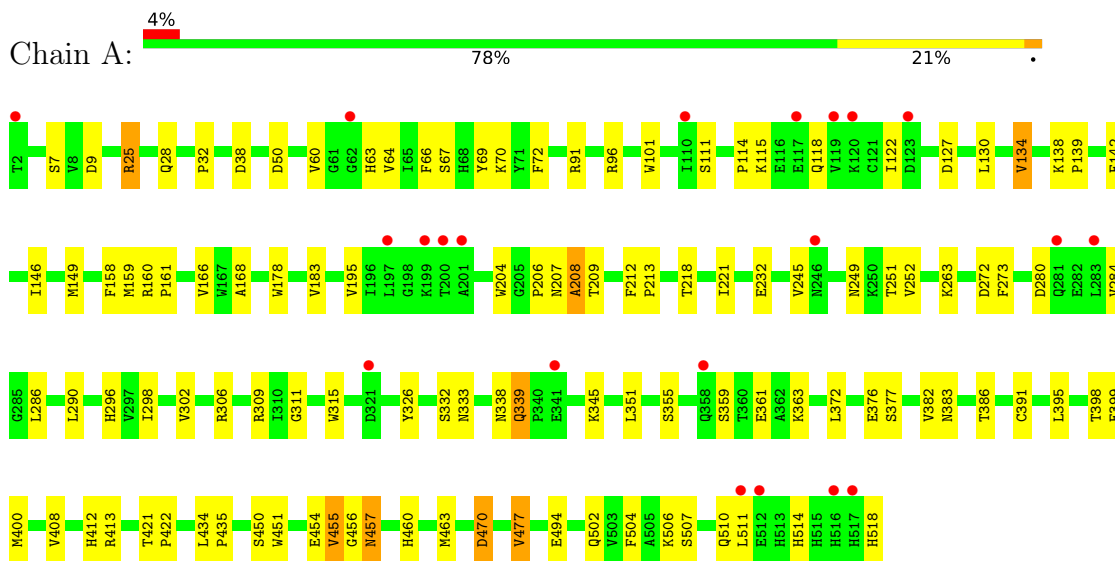
- Molecule 5 is water.

Mol	Chain	Residues	Atoms		ZeroOcc	AltConf
5	A	54	Total	O	0	0
			54	54		
5	B	53	Total	O	0	0
			53	53		
5	C	37	Total	O	0	0
			37	37		
5	D	28	Total	O	0	0
			28	28		

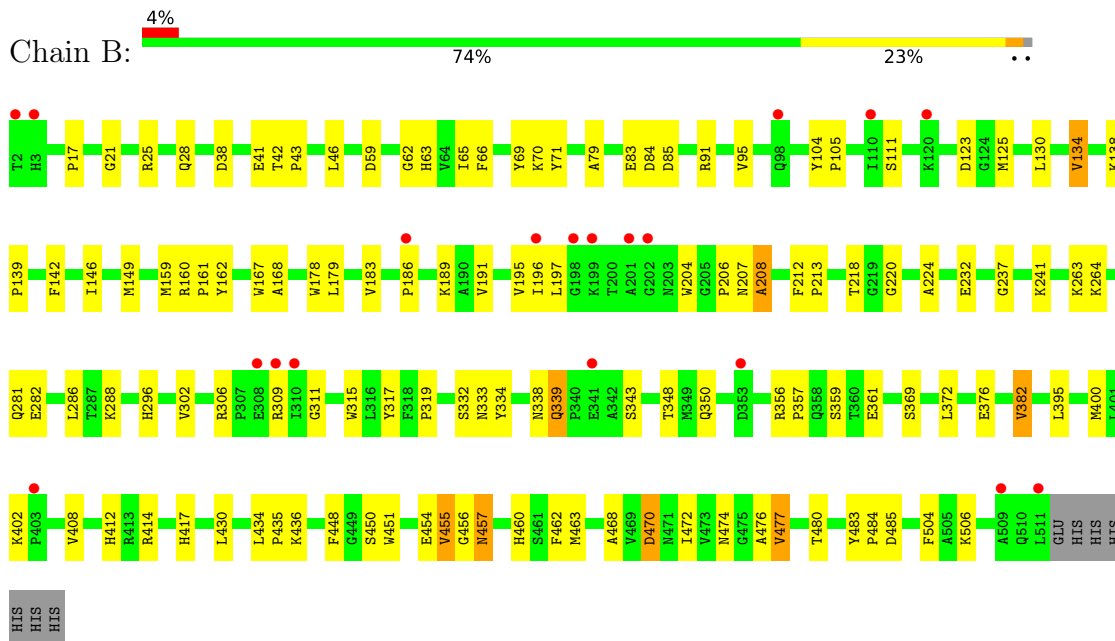
3 Residue-property plots [i](#)

These plots are drawn for all protein, RNA, DNA and oligosaccharide chains in the entry. The first graphic for a chain summarises the proportions of the various outlier classes displayed in the second graphic. The second graphic shows the sequence view annotated by issues in geometry and electron density. Residues are color-coded according to the number of geometric quality criteria for which they contain at least one outlier: green = 0, yellow = 1, orange = 2 and red = 3 or more. A red dot above a residue indicates a poor fit to the electron density ($RSRZ > 2$). Stretches of 2 or more consecutive residues without any outlier are shown as a green connector. Residues present in the sample, but not in the model, are shown in grey.

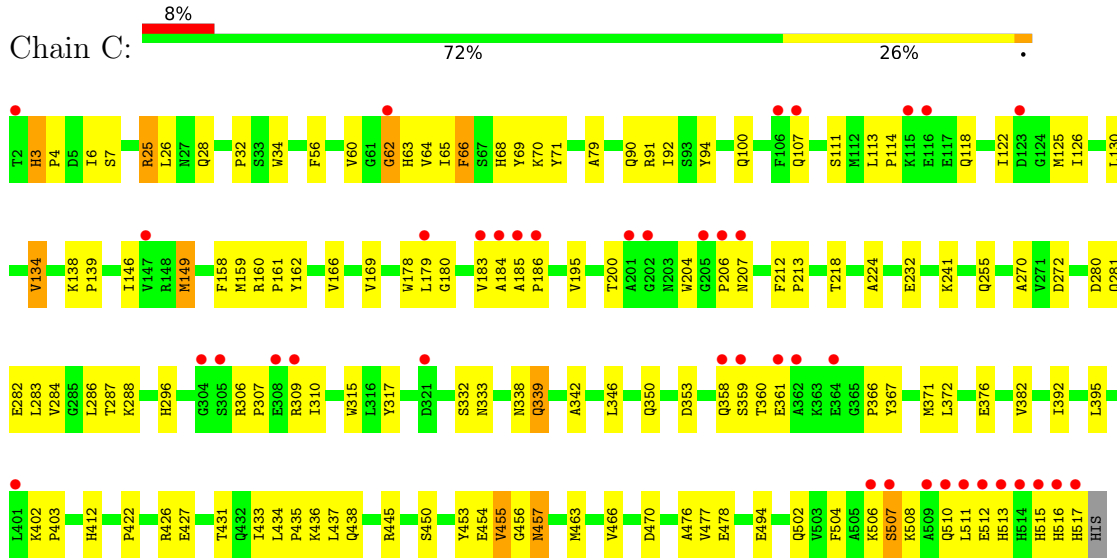
- Molecule 1: UDP-galactopyranose mutase



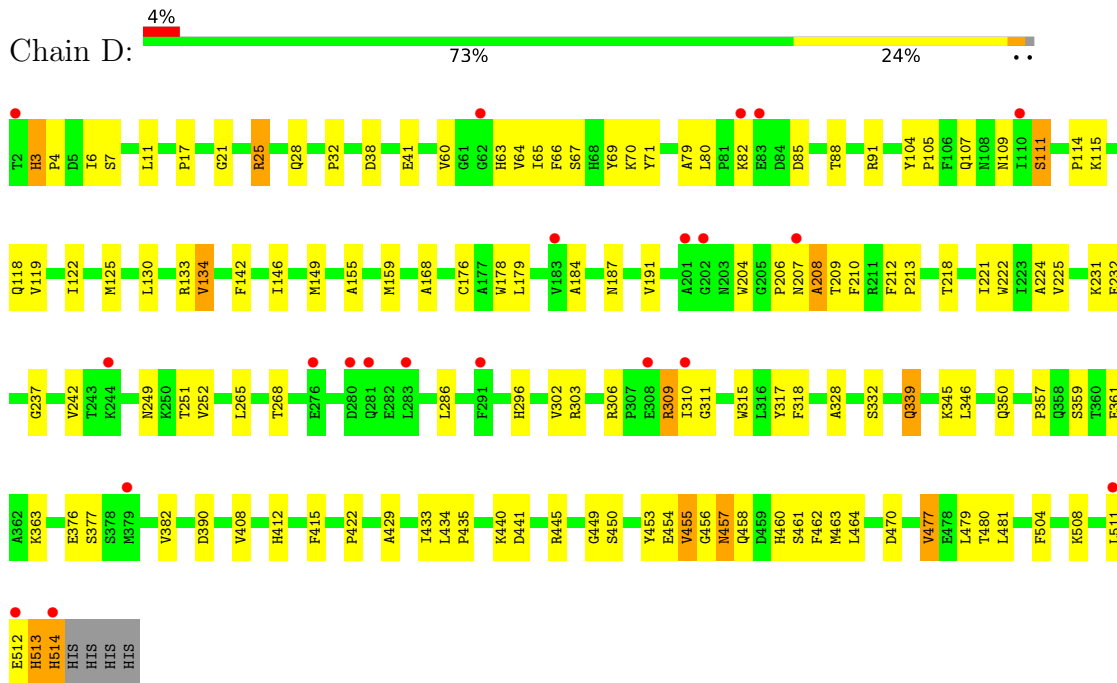
- Molecule 1: UDP-galactopyranose mutase



• Molecule 1: UDP-galactopyranose mutase



• Molecule 1: UDP-galactopyranose mutase



4 Data and refinement statistics

Property	Value	Source
Space group	P 1 21 1	Depositor
Cell constants a, b, c, α , β , γ	70.66Å 123.66Å 156.37Å 90.00° 103.26° 90.00°	Depositor
Resolution (Å)	47.99 – 2.75 47.99 – 2.75	Depositor EDS
% Data completeness (in resolution range)	93.4 (47.99-2.75) 93.5 (47.99-2.75)	Depositor EDS
R_{merge}	0.10	Depositor
R_{sym}	0.10	Depositor
$\langle I/\sigma(I) \rangle$ ¹	2.30 (at 2.77Å)	Xtrriage
Refinement program	PHENIX 1.7.1_743	Depositor
R, R_{free}	0.183 , 0.241 0.180 , 0.237	Depositor DCC
R_{free} test set	3182 reflections (5.00%)	wwPDB-VP
Wilson B-factor (Å ²)	46.5	Xtrriage
Anisotropy	0.034	Xtrriage
Bulk solvent k_{sol} (e/Å ³), B_{sol} (Å ²)	0.35 , 54.3	EDS
L-test for twinning ²	$\langle L \rangle = 0.49$, $\langle L^2 \rangle = 0.32$	Xtrriage
Estimated twinning fraction	0.031 for h,-k,-h-l	Xtrriage
F_o, F_c correlation	0.94	EDS
Total number of atoms	16649	wwPDB-VP
Average B, all atoms (Å ²)	50.0	wwPDB-VP

Xtrriage's analysis on translational NCS is as follows: *The largest off-origin peak in the Patterson function is 4.04% of the height of the origin peak. No significant pseudotranslation is detected.*

¹Intensities estimated from amplitudes.

²Theoretical values of $\langle |L| \rangle$, $\langle L^2 \rangle$ for acentric reflections are 0.5, 0.333 respectively for untwinned datasets, and 0.375, 0.2 for perfectly twinned datasets.

5 Model quality [i](#)

5.1 Standard geometry [i](#)

Bond lengths and bond angles in the following residue types are not validated in this section: FAD, UDP, FDA

The Z score for a bond length (or angle) is the number of standard deviations the observed value is removed from the expected value. A bond length (or angle) with $|Z| > 5$ is considered an outlier worth inspection. RMSZ is the root-mean-square of all Z scores of the bond lengths (or angles).

Mol	Chain	Bond lengths		Bond angles	
		RMSZ	# Z >5	RMSZ	# Z >5
1	A	0.26	0/4176	0.43	0/5675
1	B	0.26	0/4101	0.43	0/5573
1	C	0.27	0/4165	0.44	0/5660
1	D	0.25	0/4132	0.43	0/5615
All	All	0.26	0/16574	0.43	0/22523

There are no bond length outliers.

There are no bond angle outliers.

There are no chirality outliers.

There are no planarity outliers.

5.2 Too-close contacts [i](#)

In the following table, the Non-H and H(model) columns list the number of non-hydrogen atoms and hydrogen atoms in the chain respectively. The H(added) column lists the number of hydrogen atoms added and optimized by MolProbity. The Clashes column lists the number of clashes within the asymmetric unit, whereas Symm-Clashes lists symmetry-related clashes.

Mol	Chain	Non-H	H(model)	H(added)	Clashes	Symm-Clashes
1	A	4071	0	3973	87	0
1	B	4002	0	3925	92	0
1	C	4061	0	3966	104	0
1	D	4031	0	3945	96	0
2	A	53	0	30	2	0
2	B	53	0	30	5	0
2	D	53	0	30	3	0
3	A	25	0	11	1	0
3	B	25	0	11	1	0

Continued on next page...

Continued from previous page...

Mol	Chain	Non-H	H(model)	H(added)	Clashes	Symm-Clashes
3	C	25	0	11	2	0
3	D	25	0	11	2	0
4	C	53	0	30	3	0
5	A	54	0	0	1	0
5	B	53	0	0	6	0
5	C	37	0	0	1	0
5	D	28	0	0	4	0
All	All	16649	0	15973	366	0

The all-atom clashscore is defined as the number of clashes found per 1000 atoms (including hydrogen atoms). The all-atom clashscore for this structure is 11.

All (366) close contacts within the same asymmetric unit are listed below, sorted by their clash magnitude.

Atom-1	Atom-2	Interatomic distance (Å)	Clash overlap (Å)
1:C:66:PHE:CE2	1:C:206:PRO:HB3	2.00	0.95
1:A:456:GLY:O	1:A:457:ASN:HB2	1.71	0.90
1:C:456:GLY:O	1:C:457:ASN:HB2	1.72	0.88
1:D:63:HIS:HB2	1:D:218:THR:HG21	1.54	0.87
1:C:91:ARG:HD3	1:C:207:ASN:HB2	1.55	0.85
1:A:91:ARG:HH11	1:A:207:ASN:HB2	1.43	0.83
1:D:107:GLN:HE21	1:D:184:ALA:HB3	1.45	0.81
1:A:296:HIS:HD2	1:A:412:HIS:HE1	1.29	0.78
1:C:309:ARG:HH21	1:C:402:LYS:HE2	1.49	0.78
1:B:296:HIS:HD2	1:B:412:HIS:HE1	1.30	0.78
1:C:64:VAL:HG21	1:C:315:TRP:CZ3	2.18	0.78
1:C:3:HIS:H	1:C:3:HIS:CD2	1.98	0.77
1:C:66:PHE:CZ	1:C:206:PRO:HB3	2.19	0.76
1:C:513:HIS:HA	1:C:516:HIS:HD1	1.52	0.75
1:B:504:PHE:CD2	1:C:32:PRO:HB3	2.21	0.75
1:C:309:ARG:NH2	1:C:402:LYS:HE2	2.02	0.74
1:C:296:HIS:HD2	1:C:412:HIS:HE1	1.34	0.73
1:D:508:LYS:HA	1:D:511:LEU:HD13	1.70	0.73
1:A:134:VAL:HG22	1:C:134:VAL:HG22	1.69	0.72
1:C:511:LEU:O	1:C:515:HIS:HD2	1.72	0.72
1:A:296:HIS:HD2	1:A:412:HIS:CE1	2.08	0.71
1:B:332:SER:HA	1:B:339:GLN:NE2	2.04	0.71
1:D:508:LYS:HG3	1:D:511:LEU:HD22	1.72	0.70
1:B:63:HIS:HB2	1:B:218:THR:HG21	1.73	0.69
1:A:296:HIS:CD2	1:A:412:HIS:HE1	2.09	0.69
1:A:504:PHE:CD2	1:D:32:PRO:HB3	2.28	0.69

Continued on next page...

Continued from previous page...

Atom-1	Atom-2	Interatomic distance (Å)	Clash overlap (Å)
1:C:66:PHE:HE2	1:C:68:HIS:NE2	1.91	0.69
1:C:296:HIS:HD2	1:C:412:HIS:CE1	2.11	0.68
1:C:296:HIS:CD2	1:C:412:HIS:HE1	2.11	0.68
1:C:111:SER:HB3	1:C:195:VAL:HA	1.77	0.67
1:D:296:HIS:HD2	1:D:412:HIS:HE1	1.41	0.67
1:D:511:LEU:HG	1:D:512:GLU:H	1.59	0.67
1:C:125:MET:HE1	1:C:186:PRO:HB2	1.75	0.67
1:D:67:SER:N	5:D:722:HOH:O	2.27	0.66
1:C:91:ARG:HG3	1:C:315:TRP:CH2	2.30	0.65
1:D:146:ILE:HD13	1:D:159:MET:HB3	1.77	0.65
1:B:306:ARG:HD3	1:B:333:ASN:HD21	1.61	0.65
1:C:3:HIS:CD2	1:C:3:HIS:N	2.63	0.65
1:A:372:LEU:HD21	1:A:395:LEU:HD21	1.77	0.65
1:A:306:ARG:HD3	1:A:333:ASN:HD21	1.60	0.65
1:B:296:HIS:HD2	1:B:412:HIS:CE1	2.15	0.65
1:A:115:LYS:HB3	1:B:197:LEU:HD23	1.79	0.64
1:D:212:PHE:CG	1:D:213:PRO:HD2	2.33	0.64
1:C:502:GLN:O	1:C:506:LYS:HG3	1.97	0.64
1:C:107:GLN:HE21	1:C:184:ALA:HB3	1.62	0.64
1:D:296:HIS:HD2	1:D:412:HIS:CE1	2.16	0.64
1:A:434:LEU:HB2	1:A:435:PRO:HD3	1.80	0.63
1:C:91:ARG:NH2	1:C:204:TRP:O	2.31	0.63
1:C:513:HIS:HA	1:C:516:HIS:ND1	2.14	0.62
1:A:502:GLN:O	1:A:506:LYS:HD3	1.99	0.62
1:C:296:HIS:HE1	1:C:376:GLU:OE2	1.83	0.62
1:B:296:HIS:CD2	1:B:412:HIS:HE1	2.16	0.62
1:C:63:HIS:HB2	1:C:218:THR:HG21	1.82	0.61
1:D:429:ALA:O	1:D:433:ILE:HG13	2.01	0.61
1:C:66:PHE:HE2	1:C:68:HIS:CE1	2.19	0.60
1:A:178:TRP:HB2	1:A:454:GLU:HG3	1.83	0.60
1:C:287:THR:HG22	1:C:433:ILE:HD13	1.83	0.60
1:D:69:TYR:CG	1:D:463:MET:HG3	2.36	0.60
1:C:338:ASN:HB2	1:C:339:GLN:HE21	1.66	0.60
1:B:178:TRP:HB2	1:B:454:GLU:HG3	1.84	0.59
1:B:306:ARG:HD2	1:B:311:GLY:O	2.02	0.59
1:A:91:ARG:NH1	1:A:207:ASN:HB2	2.16	0.59
1:B:69:TYR:CG	1:B:463:MET:HG3	2.38	0.59
1:C:306:ARG:HD3	1:C:333:ASN:HD21	1.67	0.58
1:A:457:ASN:HA	2:A:601:FDA:H1'2	1.86	0.58
1:B:91:ARG:HD3	1:B:207:ASN:CB	2.33	0.58
1:D:511:LEU:O	1:D:512:GLU:HB2	2.02	0.58

Continued on next page...

Continued from previous page...

Atom-1	Atom-2	Interatomic distance (Å)	Clash overlap (Å)
1:B:91:ARG:HD3	1:B:207:ASN:HB2	1.84	0.58
1:C:456:GLY:O	1:C:457:ASN:CB	2.50	0.58
1:D:455:VAL:HG13	1:D:455:VAL:O	2.01	0.58
1:B:91:ARG:HH11	1:B:207:ASN:HB2	1.69	0.58
1:D:38:ASP:OD1	2:D:601:FDA:O3B	2.22	0.58
1:A:25:ARG:HH21	1:A:28:GLN:HE22	1.50	0.58
1:A:456:GLY:O	1:A:457:ASN:CB	2.48	0.57
1:C:332:SER:HA	1:C:339:GLN:NE2	2.18	0.57
1:A:66:PHE:CE1	1:A:206:PRO:HB2	2.40	0.57
1:A:91:ARG:NH2	1:A:204:TRP:O	2.34	0.57
1:C:178:TRP:HB2	1:C:454:GLU:HG3	1.87	0.57
1:A:38:ASP:OD1	2:A:601:FDA:O3B	2.22	0.57
1:C:353:ASP:HB3	1:C:403:PRO:HB3	1.87	0.57
1:D:296:HIS:CD2	1:D:412:HIS:HE1	2.22	0.57
1:C:232:GLU:OE1	1:C:232:GLU:N	2.36	0.56
1:A:298:ILE:HG13	1:A:391:CYS:SG	2.46	0.56
1:D:231:LYS:NZ	5:D:711:HOH:O	2.39	0.56
1:C:504:PHE:O	1:C:508:LYS:HG3	2.05	0.56
1:C:512:GLU:O	1:C:516:HIS:ND1	2.39	0.56
1:C:502:GLN:HB3	1:C:506:LYS:HE2	1.88	0.56
1:A:494:GLU:HG2	1:D:477:VAL:HA	1.88	0.55
1:B:69:TYR:CD1	1:B:463:MET:HG3	2.41	0.55
1:C:453:TYR:OH	3:C:602:UDP:O2B	2.22	0.55
1:A:455:VAL:O	1:A:455:VAL:HG13	2.06	0.55
1:C:338:ASN:HB2	1:C:339:GLN:NE2	2.21	0.55
1:D:21:GLY:HA2	1:D:462:PHE:CE1	2.42	0.55
1:D:60:VAL:HG13	1:D:415:PHE:CE2	2.42	0.55
1:B:146:ILE:HD13	1:B:159:MET:HB3	1.89	0.54
1:C:359:SER:OG	1:C:361:GLU:HG2	2.08	0.54
1:C:427:GLU:O	1:C:431:THR:HG23	2.08	0.54
1:B:296:HIS:HE1	1:B:376:GLU:OE2	1.90	0.54
1:D:350:GLN:HA	1:D:357:PRO:HD3	1.90	0.54
1:C:342:ALA:HB2	1:C:366:PRO:HB3	1.89	0.54
1:D:296:HIS:HE1	1:D:376:GLU:OE2	1.91	0.54
1:C:66:PHE:CD2	1:C:66:PHE:O	2.61	0.54
1:D:332:SER:HA	1:D:339:GLN:NE2	2.23	0.54
1:A:296:HIS:HE1	1:A:376:GLU:OE2	1.91	0.53
1:D:178:TRP:HB2	1:D:454:GLU:HG3	1.89	0.53
1:A:91:ARG:HD3	1:A:207:ASN:HB3	1.90	0.53
1:C:455:VAL:CG1	1:C:455:VAL:O	2.56	0.53
1:D:11:LEU:O	1:D:265:LEU:HD12	2.09	0.53

Continued on next page...

Continued from previous page...

Atom-1	Atom-2	Interatomic distance (Å)	Clash overlap (Å)
1:A:96:ARG:HB2	1:A:101:TRP:CZ3	2.44	0.53
1:B:350:GLN:HA	1:B:357:PRO:HD3	1.90	0.53
3:D:602:UDP:H3'	5:D:724:HOH:O	2.09	0.53
1:B:134:VAL:HG22	1:D:134:VAL:HG22	1.90	0.53
1:C:178:TRP:HA	1:C:454:GLU:HG2	1.91	0.53
1:A:69:TYR:CG	1:A:463:MET:HG3	2.44	0.53
1:A:183:VAL:HG22	3:A:602:UDP:HI'	1.91	0.53
1:A:455:VAL:O	1:A:460:HIS:HB3	2.09	0.53
1:A:332:SER:HA	1:A:339:GLN:NE2	2.24	0.53
1:B:281:GLN:OE1	1:B:281:GLN:HA	2.09	0.53
1:A:178:TRP:HA	1:A:454:GLU:HG2	1.90	0.53
1:A:514:HIS:O	1:A:518:HIS:HB2	2.10	0.53
1:C:114:PRO:O	1:C:118:GLN:HG3	2.09	0.53
1:D:82:LYS:HB2	1:D:85:ASP:OD1	2.08	0.53
1:B:95:VAL:HG22	1:B:317:TYR:HB2	1.91	0.52
1:B:241:LYS:NZ	5:B:708:HOH:O	2.42	0.52
1:B:309:ARG:NH1	1:B:400:MET:O	2.42	0.52
1:C:392:ILE:HA	1:C:395:LEU:HD12	1.92	0.52
1:C:307:PRO:HB2	1:C:310:ILE:HG12	1.92	0.52
1:A:178:TRP:CB	1:A:454:GLU:HG3	2.39	0.52
1:B:359:SER:OG	1:B:361:GLU:HG2	2.10	0.52
1:B:455:VAL:HG21	1:B:480:THR:HG22	1.91	0.52
1:B:372:LEU:HD21	1:B:395:LEU:HD21	1.92	0.52
1:C:66:PHE:CE2	1:C:68:HIS:CE1	2.99	0.51
1:A:345:LYS:HA	1:A:363:LYS:O	2.09	0.51
1:D:345:LYS:HA	1:D:363:LYS:O	2.10	0.51
1:A:134:VAL:HG22	1:C:134:VAL:CG2	2.39	0.51
1:C:434:LEU:HB2	1:C:435:PRO:HD3	1.92	0.51
1:D:434:LEU:HB2	1:D:435:PRO:HD3	1.91	0.51
1:A:66:PHE:CD1	1:A:206:PRO:HB2	2.46	0.51
2:B:601:FDA:H9	2:B:601:FDA:O2'	2.10	0.51
1:D:25:ARG:HH21	1:D:28:GLN:HE22	1.59	0.51
1:A:507:SER:O	1:A:511:LEU:HD13	2.10	0.51
1:B:332:SER:HA	1:B:339:GLN:HE21	1.72	0.51
1:B:456:GLY:O	1:B:457:ASN:HB2	2.10	0.51
1:C:358:GLN:N	5:C:721:HOH:O	2.42	0.51
1:D:309:ARG:HG3	1:D:310:ILE:HD12	1.93	0.51
1:C:62:GLY:N	1:C:371:MET:SD	2.84	0.51
1:B:455:VAL:HG13	1:B:455:VAL:O	2.10	0.51
1:B:232:GLU:OE1	1:B:232:GLU:N	2.36	0.50
1:C:26:LEU:HD13	1:C:34:TRP:CB	2.41	0.50

Continued on next page...

Continued from previous page...

Atom-1	Atom-2	Interatomic distance (Å)	Clash overlap (Å)
1:C:130:LEU:HD23	1:D:130:LEU:HD23	1.93	0.50
1:D:114:PRO:O	1:D:118:GLN:HG3	2.11	0.50
1:C:69:TYR:CG	1:C:463:MET:HG3	2.46	0.50
1:B:408:VAL:HG12	1:B:408:VAL:O	2.10	0.50
1:D:508:LYS:HG3	1:D:511:LEU:CD2	2.40	0.50
1:A:50:ASP:OD2	1:A:413:ARG:NH1	2.42	0.50
1:C:122:ILE:O	1:C:126:ILE:HG13	2.12	0.50
1:A:212:PHE:CG	1:A:213:PRO:HD2	2.47	0.50
1:D:79:ALA:HB1	1:D:224:ALA:HB1	1.93	0.50
1:A:232:GLU:OE1	1:A:232:GLU:N	2.34	0.50
1:A:67:SER:HB2	1:A:72:PHE:HD2	1.77	0.49
1:B:28:GLN:HE22	1:B:71:TYR:HE2	1.60	0.49
1:C:60:VAL:HB	1:C:63:HIS:NE2	2.27	0.49
1:D:25:ARG:HH21	1:D:28:GLN:NE2	2.10	0.49
1:A:249:ASN:O	1:A:251:THR:HG23	2.12	0.49
1:C:91:ARG:HG3	1:C:315:TRP:CZ2	2.48	0.49
1:D:66:PHE:CE1	1:D:206:PRO:HB2	2.47	0.49
1:B:38:ASP:OD1	2:B:601:FDA:O3B	2.31	0.49
1:B:338:ASN:HB2	1:B:339:GLN:NE2	2.27	0.49
1:A:32:PRO:HB3	1:D:504:PHE:CD2	2.48	0.49
1:D:332:SER:HA	1:D:339:GLN:HE21	1.78	0.49
1:A:178:TRP:HA	1:A:454:GLU:CG	2.42	0.48
1:C:506:LYS:O	1:C:510:GLN:HB2	2.13	0.48
1:D:187:ASN:O	1:D:191:VAL:HG23	2.13	0.48
1:C:66:PHE:CD2	1:C:206:PRO:HB3	2.46	0.48
1:B:343:SER:N	5:B:727:HOH:O	2.46	0.48
1:D:232:GLU:H	1:D:232:GLU:CD	2.14	0.48
1:A:359:SER:OG	1:A:361:GLU:HG2	2.14	0.48
1:C:63:HIS:HD1	4:C:601:FAD:C4X	2.26	0.48
1:D:38:ASP:OD1	2:D:601:FDA:H1B	2.14	0.48
1:A:91:ARG:HD3	1:A:207:ASN:CB	2.43	0.48
4:C:601:FAD:H9	4:C:601:FAD:H1'1	1.60	0.48
1:B:178:TRP:HA	1:B:454:GLU:HG2	1.95	0.48
1:B:376:GLU:HG3	1:B:382:VAL:HG13	1.96	0.48
1:D:231:LYS:HA	1:D:231:LYS:HD3	1.74	0.48
1:D:242:VAL:HG13	1:D:252:VAL:HG13	1.96	0.48
1:A:338:ASN:HB2	1:A:339:GLN:NE2	2.29	0.48
1:B:414:ARG:NH1	5:B:731:HOH:O	2.21	0.48
1:D:64:VAL:HG21	1:D:315:TRP:CZ3	2.49	0.48
1:D:453:TYR:OH	3:D:602:UDP:O2B	2.27	0.48
1:B:160:ARG:N	1:B:161:PRO:HD2	2.27	0.48

Continued on next page...

Continued from previous page...

Atom-1	Atom-2	Interatomic distance (Å)	Clash overlap (Å)
1:B:474:ASN:ND2	5:B:753:HOH:O	2.46	0.48
1:A:195:VAL:HG11	1:B:196:ILE:HG12	1.96	0.48
1:B:21:GLY:HA2	1:B:462:PHE:CE1	2.49	0.47
1:C:25:ARG:HB2	1:C:466:VAL:HG13	1.95	0.47
1:C:184:ALA:HB2	1:C:204:TRP:CE2	2.49	0.47
1:C:280:ASP:O	1:C:284:VAL:HG23	2.14	0.47
1:A:309:ARG:NH1	1:A:400:MET:O	2.47	0.47
1:C:149:MET:HG3	1:C:185:ALA:HB1	1.96	0.47
1:B:41:GLU:HG2	1:B:237:GLY:HA2	1.95	0.47
1:B:456:GLY:O	1:B:457:ASN:CB	2.62	0.47
1:C:79:ALA:HB1	1:C:224:ALA:CB	2.44	0.47
1:D:69:TYR:CD1	1:D:463:MET:HG3	2.49	0.47
1:D:91:ARG:HG3	1:D:315:TRP:CH2	2.50	0.47
1:D:445:ARG:NE	1:D:481:LEU:HD22	2.29	0.47
1:B:417:HIS:HB3	1:B:448:PHE:CZ	2.50	0.47
1:C:65:ILE:HG22	1:C:66:PHE:N	2.30	0.47
1:C:113:LEU:HB3	1:C:114:PRO:HD2	1.97	0.47
1:D:41:GLU:HG2	1:D:237:GLY:HA3	1.97	0.47
1:B:83:GLU:C	1:B:85:ASP:H	2.18	0.47
1:C:160:ARG:N	1:C:161:PRO:HD2	2.30	0.47
1:A:63:HIS:HB2	1:A:218:THR:HG21	1.96	0.47
1:C:69:TYR:CD1	1:C:463:MET:HG3	2.50	0.47
1:C:372:LEU:HD21	1:C:395:LEU:HD21	1.96	0.47
1:D:212:PHE:CD2	1:D:213:PRO:HD2	2.50	0.47
1:B:162:TYR:HB2	1:B:319:PRO:HB3	1.97	0.47
1:A:114:PRO:O	1:A:118:GLN:HG3	2.15	0.46
1:B:207:ASN:O	1:B:208:ALA:C	2.54	0.46
1:B:483:TYR:N	1:B:484:PRO:HD3	2.30	0.46
1:D:64:VAL:HG12	1:D:66:PHE:HD2	1.79	0.46
1:A:207:ASN:O	1:A:208:ALA:C	2.53	0.46
1:D:207:ASN:O	1:D:208:ALA:C	2.54	0.46
1:B:434:LEU:HB2	1:B:435:PRO:HD3	1.97	0.46
1:A:64:VAL:HG21	1:A:315:TRP:CZ3	2.51	0.46
1:C:284:VAL:O	1:C:288:LYS:HG2	2.16	0.46
1:D:155:ALA:HA	1:D:159:MET:HB2	1.96	0.46
1:A:245:VAL:HG22	1:A:252:VAL:HG22	1.98	0.46
1:B:191:VAL:O	1:B:195:VAL:HG23	2.16	0.46
1:C:422:PRO:HA	1:C:426:ARG:HD3	1.98	0.46
1:A:333:ASN:ND2	5:A:733:HOH:O	2.48	0.46
1:C:158:PHE:HE2	1:C:159:MET:HE1	1.81	0.46
1:C:392:ILE:O	1:C:395:LEU:HB2	2.15	0.46

Continued on next page...

Continued from previous page...

Atom-1	Atom-2	Interatomic distance (Å)	Clash overlap (Å)
1:A:332:SER:HA	1:A:339:GLN:HE21	1.80	0.46
1:B:455:VAL:HG22	1:B:460:HIS:HB3	1.97	0.46
1:D:455:VAL:HG22	1:D:460:HIS:HB3	1.98	0.46
1:B:70:LYS:HD2	1:B:70:LYS:HA	1.75	0.46
1:C:162:TYR:O	1:C:166:VAL:HG12	2.16	0.45
1:D:79:ALA:HB1	1:D:224:ALA:CB	2.46	0.45
1:B:91:ARG:HG3	1:B:315:TRP:CH2	2.52	0.45
1:C:92:ILE:HG22	1:C:94:TYR:CE2	2.51	0.45
1:D:91:ARG:HH11	1:D:207:ASN:HB2	1.82	0.45
1:A:421:THR:HA	1:A:422:PRO:HD3	1.78	0.45
1:B:220:GLY:HA3	5:B:748:HOH:O	2.15	0.45
1:C:56:PHE:CE1	1:C:339:GLN:HB3	2.52	0.45
1:C:162:TYR:HH	1:C:317:TYR:HD1	1.63	0.45
1:C:306:ARG:CD	1:C:333:ASN:HD21	2.30	0.45
1:A:25:ARG:HD3	1:A:470:ASP:OD1	2.16	0.45
1:C:28:GLN:NE2	1:C:71:TYR:OH	2.49	0.45
1:A:338:ASN:HB2	1:A:339:GLN:HE21	1.82	0.45
1:B:263:LYS:NZ	1:C:507:SER:HB3	2.32	0.45
1:B:348:THR:CG2	1:B:357:PRO:HB3	2.46	0.45
1:C:183:VAL:HG22	3:C:602:UDP:H1'	1.99	0.45
1:C:282:GLU:OE2	1:C:436:LYS:HE2	2.16	0.45
1:B:65:ILE:N	1:B:65:ILE:HD12	2.32	0.45
1:D:318:PHE:HE1	1:D:328:ALA:HB3	1.82	0.45
1:D:508:LYS:CG	1:D:511:LEU:HD22	2.44	0.45
1:B:69:TYR:CD2	1:B:463:MET:HG3	2.52	0.45
1:A:408:VAL:HG12	1:A:408:VAL:O	2.17	0.44
1:D:17:PRO:HG2	2:D:601:FDA:H4'	1.98	0.44
1:D:408:VAL:HG12	1:D:408:VAL:O	2.17	0.44
1:A:168:ALA:HB1	1:A:377:SER:OG	2.17	0.44
1:A:351:LEU:HD12	1:A:355:SER:OG	2.15	0.44
1:C:281:GLN:HA	1:C:281:GLN:OE1	2.17	0.44
1:A:69:TYR:CD2	1:A:463:MET:HG3	2.52	0.44
1:D:41:GLU:HG2	1:D:237:GLY:CA	2.48	0.44
1:B:46:LEU:HD13	2:B:601:FDA:HM81	2.00	0.44
1:B:468:ALA:O	1:B:472:ILE:HG13	2.18	0.44
1:C:346:LEU:HD12	1:C:367:TYR:CZ	2.53	0.44
1:A:280:ASP:O	1:A:284:VAL:HG23	2.18	0.44
1:D:268:THR:HA	1:D:445:ARG:O	2.18	0.44
1:B:59:ASP:HB2	1:B:62:GLY:HA2	2.00	0.44
1:D:184:ALA:HB2	1:D:204:TRP:CE2	2.53	0.44
1:D:508:LYS:HA	1:D:511:LEU:HD22	2.00	0.44

Continued on next page...

Continued from previous page...

Atom-1	Atom-2	Interatomic distance (Å)	Clash overlap (Å)
1:A:290:LEU:HD13	1:A:451:TRP:CD2	2.52	0.44
1:B:212:PHE:CG	1:B:213:PRO:HD2	2.53	0.44
1:B:264:LYS:HG3	1:B:472:ILE:HG23	2.00	0.44
1:A:7:SER:HB2	1:D:514:HIS:HA	2.00	0.43
1:D:249:ASN:OD1	1:D:251:THR:HG23	2.18	0.43
1:B:183:VAL:HG13	3:B:602:UDP:O2	2.19	0.43
1:C:470:ASP:HB3	1:C:476:ALA:HB3	2.00	0.43
1:D:142:PHE:HA	1:D:176:CYS:HB3	2.00	0.43
1:D:168:ALA:HB1	1:D:377:SER:OG	2.18	0.43
1:C:118:GLN:O	1:C:122:ILE:HG12	2.18	0.43
1:D:222:TRP:HE1	1:D:458:GLN:NE2	2.16	0.43
1:A:212:PHE:CD2	1:A:213:PRO:HD2	2.54	0.43
1:C:455:VAL:O	1:C:455:VAL:HG13	2.19	0.43
1:A:398:THR:O	1:A:399:GLU:HB2	2.19	0.43
1:C:4:PRO:HB2	1:C:6:ILE:O	2.19	0.43
1:D:3:HIS:HA	1:D:4:PRO:HD3	1.79	0.43
1:B:125:MET:HE1	1:B:186:PRO:HB2	2.01	0.43
1:D:115:LYS:O	1:D:119:VAL:HG23	2.19	0.43
1:A:146:ILE:HD13	1:A:159:MET:HB3	2.01	0.43
1:B:315:TRP:HE3	1:B:334:TYR:HH	1.65	0.43
1:D:65:ILE:O	1:D:210:PHE:HB2	2.19	0.43
1:D:455:VAL:HG21	1:D:480:THR:CG2	2.49	0.43
1:A:130:LEU:HD23	1:B:130:LEU:HD23	2.00	0.42
1:A:306:ARG:HD2	1:A:311:GLY:O	2.19	0.42
1:B:457:ASN:HA	2:B:601:FDA:H1'2	2.01	0.42
1:D:66:PHE:CD1	1:D:206:PRO:HB2	2.55	0.42
1:A:142:PHE:CZ	1:A:146:ILE:HD11	2.54	0.42
1:D:440:LYS:O	1:D:441:ASP:HB2	2.19	0.42
1:D:315:TRP:HE1	1:D:317:TYR:HH	1.65	0.42
1:D:359:SER:OG	1:D:361:GLU:HG2	2.19	0.42
1:A:69:TYR:CD1	1:A:463:MET:HG3	2.54	0.42
1:A:138:LYS:HG2	1:A:139:PRO:HD2	2.01	0.42
1:C:66:PHE:CE2	1:C:68:HIS:NE2	2.81	0.42
1:B:142:PHE:O	1:B:146:ILE:HG13	2.19	0.42
1:C:270:ALA:HB1	1:C:272:ASP:OD1	2.19	0.42
1:D:125:MET:HE1	1:D:191:VAL:HG21	2.01	0.42
1:D:445:ARG:O	1:D:449:GLY:HA3	2.19	0.42
1:C:70:LYS:HD3	1:C:70:LYS:HA	1.50	0.42
1:B:104:TYR:CD1	1:B:105:PRO:HA	2.55	0.42
1:B:470:ASP:HB3	1:B:476:ALA:HB3	2.01	0.42
1:D:118:GLN:O	1:D:122:ILE:HG12	2.20	0.42

Continued on next page...

Continued from previous page...

Atom-1	Atom-2	Interatomic distance (Å)	Clash overlap (Å)
1:D:306:ARG:HD2	1:D:311:GLY:O	2.20	0.42
1:B:42:THR:HA	1:B:43:PRO:HD2	1.94	0.42
1:B:79:ALA:HB1	1:B:224:ALA:CB	2.50	0.42
1:C:25:ARG:HD3	1:C:470:ASP:OD1	2.20	0.42
1:B:167:TRP:O	1:B:168:ALA:HB3	2.20	0.41
1:B:91:ARG:NH1	1:B:104:TYR:HE2	2.17	0.41
1:D:71:TYR:HB2	5:D:709:HOH:O	2.19	0.41
1:A:166:VAL:HG23	1:A:326:TYR:CZ	2.55	0.41
1:A:477:VAL:HG11	1:D:479:LEU:HD11	2.02	0.41
1:B:477:VAL:HA	1:C:494:GLU:HG2	2.00	0.41
1:D:80:LEU:HB3	1:D:85:ASP:HB3	2.03	0.41
1:D:104:TYR:CD1	1:D:105:PRO:HA	2.55	0.41
1:A:218:THR:O	1:A:221:ILE:HB	2.21	0.41
1:A:272:ASP:OD1	1:A:273:PHE:N	2.54	0.41
1:C:241:LYS:HB3	1:C:255:GLN:HB2	2.02	0.41
1:B:430:LEU:HD11	1:B:451:TRP:HB3	2.02	0.41
1:C:146:ILE:HD13	1:C:159:MET:HB3	2.01	0.41
1:D:133:ARG:O	1:D:133:ARG:HG3	2.19	0.41
1:C:26:LEU:HD13	1:C:34:TRP:HB2	2.03	0.41
1:C:283:LEU:CD1	1:C:437:LEU:HD21	2.51	0.41
1:A:127:ASP:OD1	1:B:189:LYS:HE3	2.21	0.41
1:C:138:LYS:HG2	1:C:139:PRO:HD2	2.02	0.41
1:D:107:GLN:NE2	1:D:184:ALA:HB3	2.24	0.41
1:D:303:ARG:NH2	1:D:346:LEU:O	2.39	0.41
1:A:60:VAL:O	1:A:60:VAL:HG12	2.21	0.41
1:A:70:LYS:HD2	1:A:70:LYS:HA	1.79	0.41
1:A:160:ARG:N	1:A:161:PRO:HD2	2.36	0.41
1:B:315:TRP:HE1	1:B:317:TYR:HH	1.69	0.41
1:B:332:SER:HB3	1:B:369:SER:H	1.85	0.41
1:B:455:VAL:O	1:B:460:HIS:HB3	2.21	0.41
1:C:445:ARG:HH21	1:C:478:GLU:CD	2.24	0.41
4:C:601:FAD:O4'	4:C:601:FAD:O2'	2.35	0.41
1:D:6:ILE:HG22	1:D:7:SER:N	2.36	0.41
1:B:17:PRO:HG2	2:B:601:FDA:H4'	2.03	0.41
1:D:461:SER:O	1:D:464:LEU:HB2	2.21	0.41
1:A:383:ASN:HB3	1:A:386:THR:OG1	2.21	0.40
1:B:66:PHE:CD1	1:B:206:PRO:HB2	2.56	0.40
1:B:282:GLU:OE2	1:B:436:LYS:HE2	2.20	0.40
1:D:109:ASN:C	1:D:111:SER:N	2.74	0.40
1:A:9:ASP:OD2	1:A:263:LYS:NZ	2.51	0.40
1:B:91:ARG:HD3	1:B:207:ASN:HB3	2.02	0.40

Continued on next page...

Continued from previous page...

Atom-1	Atom-2	Interatomic distance (Å)	Clash overlap (Å)
1:B:91:ARG:NH2	1:B:204:TRP:O	2.47	0.40
1:B:485:ASP:OD1	5:B:720:HOH:O	2.21	0.40
1:B:138:LYS:HG2	1:B:139:PRO:HD2	2.04	0.40
1:D:221:ILE:O	1:D:225:VAL:HG23	2.22	0.40
1:D:456:GLY:O	1:D:457:ASN:CB	2.69	0.40
1:A:122:ILE:HG13	1:B:196:ILE:HD11	2.03	0.40
1:A:158:PHE:HE2	1:A:159:MET:HE1	1.86	0.40
1:A:306:ARG:CD	1:A:333:ASN:HD21	2.31	0.40
1:B:21:GLY:HA2	1:B:462:PHE:CZ	2.56	0.40
1:B:309:ARG:HH21	1:B:402:LYS:HE3	1.87	0.40
1:C:212:PHE:CG	1:C:213:PRO:HD2	2.56	0.40
1:D:70:LYS:HD2	1:D:70:LYS:HA	1.85	0.40

There are no symmetry-related clashes.

5.3 Torsion angles [i](#)

5.3.1 Protein backbone [i](#)

In the following table, the Percentiles column shows the percent Ramachandran outliers of the chain as a percentile score with respect to all X-ray entries followed by that with respect to entries of similar resolution.

The Analysed column shows the number of residues for which the backbone conformation was analysed, and the total number of residues.

Mol	Chain	Analysed	Favoured	Allowed	Outliers	Percentiles	
1	A	515/517 (100%)	494 (96%)	19 (4%)	2 (0%)	34	53
1	B	508/517 (98%)	487 (96%)	18 (4%)	3 (1%)	25	42
1	C	514/517 (99%)	486 (95%)	25 (5%)	3 (1%)	25	42
1	D	511/517 (99%)	479 (94%)	29 (6%)	3 (1%)	25	42
All	All	2048/2068 (99%)	1946 (95%)	91 (4%)	11 (0%)	29	47

All (11) Ramachandran outliers are listed below:

Mol	Chain	Res	Type
1	A	457	ASN
1	B	457	ASN
1	C	457	ASN

Continued on next page...

Continued from previous page...

Mol	Chain	Res	Type
1	D	457	ASN
1	B	208	ALA
1	D	208	ALA
1	D	513	HIS
1	A	208	ALA
1	B	84	ASP
1	C	62	GLY
1	C	180	GLY

5.3.2 Protein sidechains [i](#)

In the following table, the Percentiles column shows the percent sidechain outliers of the chain as a percentile score with respect to all X-ray entries followed by that with respect to entries of similar resolution.

The Analysed column shows the number of residues for which the sidechain conformation was analysed, and the total number of residues.

Mol	Chain	Analysed	Rotameric	Outliers	Percentiles
1	A	439/439 (100%)	425 (97%)	14 (3%)	39 59
1	B	432/439 (98%)	415 (96%)	17 (4%)	32 52
1	C	438/439 (100%)	416 (95%)	22 (5%)	24 42
1	D	435/439 (99%)	414 (95%)	21 (5%)	25 44
All	All	1744/1756 (99%)	1670 (96%)	74 (4%)	30 49

All (74) residues with a non-rotameric sidechain are listed below:

Mol	Chain	Res	Type
1	A	25	ARG
1	A	111	SER
1	A	134	VAL
1	A	149	MET
1	A	209	THR
1	A	286	LEU
1	A	302	VAL
1	A	339	GLN
1	A	382	VAL
1	A	450	SER
1	A	455	VAL
1	A	470	ASP
1	A	477	VAL

Continued on next page...

Continued from previous page...

Mol	Chain	Res	Type
1	A	510	GLN
1	B	25	ARG
1	B	111	SER
1	B	123	ASP
1	B	134	VAL
1	B	149	MET
1	B	179	LEU
1	B	286	LEU
1	B	288	LYS
1	B	302	VAL
1	B	339	GLN
1	B	356	ARG
1	B	382	VAL
1	B	450	SER
1	B	455	VAL
1	B	470	ASP
1	B	477	VAL
1	B	506	LYS
1	C	3	HIS
1	C	7	SER
1	C	25	ARG
1	C	66	PHE
1	C	90	GLN
1	C	100	GLN
1	C	134	VAL
1	C	149	MET
1	C	169	VAL
1	C	179	LEU
1	C	200	THR
1	C	286	LEU
1	C	339	GLN
1	C	350	GLN
1	C	360	THR
1	C	382	VAL
1	C	438	GLN
1	C	450	SER
1	C	455	VAL
1	C	477	VAL
1	C	507	SER
1	C	517	HIS
1	D	3	HIS
1	D	25	ARG

Continued on next page...

Continued from previous page...

Mol	Chain	Res	Type
1	D	88	THR
1	D	111	SER
1	D	134	VAL
1	D	149	MET
1	D	179	LEU
1	D	209	THR
1	D	286	LEU
1	D	302	VAL
1	D	309	ARG
1	D	339	GLN
1	D	382	VAL
1	D	390	ASP
1	D	422	PRO
1	D	450	SER
1	D	455	VAL
1	D	470	ASP
1	D	477	VAL
1	D	513	HIS
1	D	514	HIS

Sometimes sidechains can be flipped to improve hydrogen bonding and reduce clashes. All (55) such sidechains are listed below:

Mol	Chain	Res	Type
1	A	28	GLN
1	A	90	GLN
1	A	98	GLN
1	A	118	GLN
1	A	296	HIS
1	A	333	ASN
1	A	338	ASN
1	A	339	GLN
1	A	393	GLN
1	A	397	ASN
1	A	412	HIS
1	A	458	GLN
1	B	28	GLN
1	B	98	GLN
1	B	118	GLN
1	B	248	ASN
1	B	296	HIS
1	B	333	ASN
1	B	338	ASN

Continued on next page...

Continued from previous page...

Mol	Chain	Res	Type
1	B	339	GLN
1	B	383	ASN
1	B	384	GLN
1	B	393	GLN
1	B	397	ASN
1	B	412	HIS
1	B	471	ASN
1	C	3	HIS
1	C	28	GLN
1	C	90	GLN
1	C	98	GLN
1	C	118	GLN
1	C	203	ASN
1	C	296	HIS
1	C	333	ASN
1	C	338	ASN
1	C	339	GLN
1	C	358	GLN
1	C	412	HIS
1	C	417	HIS
1	C	458	GLN
1	C	471	ASN
1	C	515	HIS
1	D	27	ASN
1	D	28	GLN
1	D	98	GLN
1	D	118	GLN
1	D	296	HIS
1	D	333	ASN
1	D	338	ASN
1	D	339	GLN
1	D	384	GLN
1	D	412	HIS
1	D	417	HIS
1	D	458	GLN
1	D	471	ASN

5.3.3 RNA

There are no RNA molecules in this entry.

5.4 Non-standard residues in protein, DNA, RNA chains [i](#)

There are no non-standard protein/DNA/RNA residues in this entry.

5.5 Carbohydrates [i](#)

There are no monosaccharides in this entry.

5.6 Ligand geometry [i](#)

8 ligands are modelled in this entry.

In the following table, the Counts columns list the number of bonds (or angles) for which Mogul statistics could be retrieved, the number of bonds (or angles) that are observed in the model and the number of bonds (or angles) that are defined in the Chemical Component Dictionary. The Link column lists molecule types, if any, to which the group is linked. The Z score for a bond length (or angle) is the number of standard deviations the observed value is removed from the expected value. A bond length (or angle) with $|Z| > 2$ is considered an outlier worth inspection. RMSZ is the root-mean-square of all Z scores of the bond lengths (or angles).

Mol	Type	Chain	Res	Link	Bond lengths			Bond angles		
					Counts	RMSZ	# Z > 2	Counts	RMSZ	# Z > 2
2	FDA	D	601	-	52,58,58	2.17	21 (40%)	60,89,89	1.94	15 (25%)
3	UDP	B	602	-	24,26,26	0.92	1 (4%)	37,40,40	1.53	7 (18%)
2	FDA	B	601	-	52,58,58	2.17	22 (42%)	60,89,89	1.81	15 (25%)
3	UDP	C	602	-	24,26,26	0.92	0	37,40,40	1.52	6 (16%)
2	FDA	A	601	-	52,58,58	2.17	20 (38%)	60,89,89	1.95	14 (23%)
3	UDP	A	602	-	24,26,26	0.94	1 (4%)	37,40,40	1.62	8 (21%)
4	FAD	C	601	-	53,58,58	2.02	13 (24%)	68,89,89	1.61	15 (22%)
3	UDP	D	602	-	24,26,26	0.93	1 (4%)	37,40,40	1.52	6 (16%)

In the following table, the Chirals column lists the number of chiral outliers, the number of chiral centers analysed, the number of these observed in the model and the number defined in the Chemical Component Dictionary. Similar counts are reported in the Torsion and Rings columns. '-' means no outliers of that kind were identified.

Mol	Type	Chain	Res	Link	Chirals	Torsions	Rings
2	FDA	D	601	-	-	4/30/50/50	0/6/6/6
3	UDP	B	602	-	-	7/16/32/32	0/2/2/2
2	FDA	B	601	-	-	5/30/50/50	0/6/6/6
3	UDP	C	602	-	-	7/16/32/32	0/2/2/2

Continued on next page...

Continued from previous page...

Mol	Type	Chain	Res	Link	Chirals	Torsions	Rings
2	FDA	A	601	-	-	6/30/50/50	0/6/6/6
3	UDP	A	602	-	-	4/16/32/32	0/2/2/2
4	FAD	C	601	-	-	7/30/50/50	0/6/6/6
3	UDP	D	602	-	-	3/16/32/32	0/2/2/2

All (79) bond length outliers are listed below:

Mol	Chain	Res	Type	Atoms	Z	Observed(Å)	Ideal(Å)
2	A	601	FDA	P-O1P	-5.70	1.30	1.50
2	B	601	FDA	P-O1P	-5.62	1.31	1.50
2	D	601	FDA	P-O1P	-5.59	1.31	1.50
4	C	601	FAD	C10-N1	5.32	1.44	1.33
4	C	601	FAD	C2B-C3B	-4.94	1.39	1.53
2	D	601	FDA	O4B-C1B	4.55	1.47	1.41
4	C	601	FAD	C1'-C2'	4.55	1.59	1.52
2	B	601	FDA	PA-O1A	-4.31	1.35	1.50
2	A	601	FDA	O4B-C1B	4.30	1.47	1.41
2	D	601	FDA	PA-O1A	-4.14	1.36	1.50
2	A	601	FDA	PA-O1A	-4.13	1.36	1.50
4	C	601	FAD	C7M-C7	4.12	1.59	1.51
2	B	601	FDA	PA-O2A	-3.89	1.37	1.55
2	B	601	FDA	O4B-C1B	3.85	1.46	1.41
2	A	601	FDA	PA-O2A	-3.76	1.37	1.55
2	D	601	FDA	PA-O2A	-3.72	1.37	1.55
2	A	601	FDA	O4'-C4'	-3.64	1.35	1.43
2	B	601	FDA	O4'-C4'	-3.63	1.35	1.43
2	D	601	FDA	O4'-C4'	-3.58	1.35	1.43
2	B	601	FDA	P-O2P	-3.39	1.39	1.55
4	C	601	FAD	C2-N1	3.36	1.44	1.36
4	C	601	FAD	C9A-N10	-3.33	1.35	1.41
2	A	601	FDA	P-O2P	-3.27	1.40	1.55
4	C	601	FAD	C9A-C5X	-3.21	1.35	1.41
2	A	601	FDA	O3B-C3B	-3.20	1.35	1.43
2	D	601	FDA	P-O2P	-3.18	1.40	1.55
2	B	601	FDA	P-O5'	-3.16	1.46	1.59
2	D	601	FDA	O3B-C3B	-3.14	1.35	1.43
2	A	601	FDA	P-O5'	-3.14	1.46	1.59
4	C	601	FAD	O3'-C3'	-3.12	1.35	1.43
2	B	601	FDA	O5B-C5B	-3.03	1.33	1.44
2	D	601	FDA	P-O5'	-3.03	1.47	1.59
2	B	601	FDA	O3B-C3B	-2.99	1.35	1.43

Continued on next page...

Continued from previous page...

Mol	Chain	Res	Type	Atoms	Z	Observed(Å)	Ideal(Å)
2	D	601	FDA	O5B-C5B	-2.98	1.33	1.44
2	A	601	FDA	O5B-C5B	-2.98	1.33	1.44
2	B	601	FDA	C4A-N3A	-2.96	1.31	1.35
4	C	601	FAD	C4X-N5	2.93	1.36	1.30
2	A	601	FDA	C4A-N3A	-2.89	1.31	1.35
4	C	601	FAD	C4'-C3'	-2.81	1.48	1.53
2	B	601	FDA	C8A-N7A	-2.81	1.29	1.34
2	D	601	FDA	C4A-N3A	-2.81	1.31	1.35
4	C	601	FAD	C1'-N10	-2.72	1.41	1.48
2	A	601	FDA	C5A-N7A	-2.69	1.30	1.39
2	A	601	FDA	C8A-N7A	-2.68	1.29	1.34
2	D	601	FDA	C5A-N7A	-2.65	1.30	1.39
2	B	601	FDA	C5A-N7A	-2.64	1.30	1.39
2	D	601	FDA	C8A-N7A	-2.62	1.30	1.34
4	C	601	FAD	P-O1P	2.59	1.60	1.50
4	C	601	FAD	O4'-C4'	2.58	1.48	1.43
2	D	601	FDA	PA-O5B	-2.50	1.49	1.59
2	A	601	FDA	PA-O5B	-2.50	1.49	1.59
2	A	601	FDA	C2A-N1A	-2.45	1.29	1.33
2	B	601	FDA	PA-O5B	-2.40	1.49	1.59
2	B	601	FDA	C2'-C3'	2.38	1.57	1.53
2	A	601	FDA	C2'-C3'	2.36	1.57	1.53
2	A	601	FDA	O5'-C5'	-2.33	1.35	1.44
2	A	601	FDA	O4-C4	-2.32	1.19	1.23
2	D	601	FDA	C2'-C3'	2.32	1.57	1.53
2	D	601	FDA	O5'-C5'	-2.30	1.35	1.44
2	B	601	FDA	O5'-C5'	-2.29	1.36	1.44
2	B	601	FDA	C9A-N10	-2.25	1.37	1.41
2	B	601	FDA	C2A-N1A	-2.24	1.29	1.33
2	D	601	FDA	C2A-N1A	-2.23	1.29	1.33
2	A	601	FDA	C9A-N10	-2.23	1.37	1.41
2	B	601	FDA	O4-C4	-2.22	1.19	1.23
2	A	601	FDA	C10-N10	-2.22	1.34	1.38
2	D	601	FDA	O4-C4	-2.21	1.19	1.23
2	D	601	FDA	O3'-C3'	-2.18	1.37	1.43
2	D	601	FDA	C9A-N10	-2.17	1.37	1.41
2	B	601	FDA	C10-N10	-2.14	1.34	1.38
2	B	601	FDA	O3'-C3'	-2.13	1.38	1.43
2	A	601	FDA	C5A-C4A	-2.11	1.35	1.40
2	B	601	FDA	C5A-C4A	-2.09	1.35	1.40
2	B	601	FDA	O2B-C2B	-2.07	1.38	1.43
2	D	601	FDA	C5A-C4A	-2.06	1.35	1.40

Continued on next page...

Continued from previous page...

Mol	Chain	Res	Type	Atoms	Z	Observed(Å)	Ideal(Å)
3	D	602	UDP	C6-C5	2.05	1.39	1.35
3	B	602	UDP	C6-C5	2.04	1.39	1.35
2	D	601	FDA	C5X-N5	-2.03	1.36	1.39
3	A	602	UDP	C6-C5	2.01	1.39	1.35

All (86) bond angle outliers are listed below:

Mol	Chain	Res	Type	Atoms	Z	Observed(°)	Ideal(°)
2	A	601	FDA	C3B-C2B-C1B	-6.08	91.82	100.98
2	B	601	FDA	C5B-C4B-C3B	5.59	136.13	115.18
2	D	601	FDA	C5B-C4B-C3B	5.53	135.89	115.18
2	D	601	FDA	C3B-C2B-C1B	-5.40	92.85	100.98
2	A	601	FDA	C5B-C4B-C3B	5.40	135.41	115.18
3	A	602	UDP	C4-N3-C2	-5.33	119.55	126.58
2	D	601	FDA	O3B-C3B-C4B	5.22	126.15	111.05
3	B	602	UDP	C4-N3-C2	-5.11	119.83	126.58
3	C	602	UDP	C4-N3-C2	-5.07	119.90	126.58
2	A	601	FDA	O3B-C3B-C4B	5.00	125.50	111.05
3	D	602	UDP	C4-N3-C2	-4.81	120.23	126.58
2	B	601	FDA	O3B-C3B-C4B	4.72	124.71	111.05
4	C	601	FAD	O5B-PA-O1A	-4.70	90.72	109.07
4	C	601	FAD	N3A-C2A-N1A	-4.24	122.06	128.68
3	A	602	UDP	N3-C2-N1	4.18	120.43	114.89
2	B	601	FDA	O2'-C2'-C3'	4.09	119.05	109.10
2	A	601	FDA	O2'-C2'-C3'	4.08	119.02	109.10
3	B	602	UDP	N3-C2-N1	4.02	120.22	114.89
3	C	602	UDP	N3-C2-N1	4.01	120.21	114.89
2	D	601	FDA	O2'-C2'-C3'	4.01	118.84	109.10
3	D	602	UDP	N3-C2-N1	3.83	119.97	114.89
2	D	601	FDA	N3A-C2A-N1A	-3.72	122.86	128.68
2	A	601	FDA	N3A-C2A-N1A	-3.68	122.92	128.68
2	D	601	FDA	O2'-C2'-C1'	3.53	118.34	109.80
2	B	601	FDA	N3A-C2A-N1A	-3.53	123.17	128.68
2	B	601	FDA	C3B-C2B-C1B	-3.46	95.77	100.98
2	A	601	FDA	O4B-C1B-C2B	-3.36	102.02	106.93
4	C	601	FAD	O5'-P-O1P	-3.26	96.33	109.07
3	D	602	UDP	PA-O3A-PB	-3.23	121.73	132.83
4	C	601	FAD	O5B-C5B-C4B	3.18	119.95	108.99
2	B	601	FDA	C4-N3-C2	-3.05	121.94	126.34
4	C	601	FAD	C4-N3-C2	-3.01	120.08	125.64
2	B	601	FDA	C5'-C4'-C3'	-2.95	106.50	112.20
3	C	602	UDP	C5-C4-N3	2.95	119.25	114.84

Continued on next page...

Continued from previous page...

Mol	Chain	Res	Type	Atoms	Z	Observed(°)	Ideal(°)
3	C	602	UDP	PA-O3A-PB	-2.92	122.82	132.83
3	B	602	UDP	C5-C4-N3	2.85	119.10	114.84
2	D	601	FDA	C4-N3-C2	-2.84	122.24	126.34
2	B	601	FDA	O2'-C2'-C1'	2.82	116.62	109.80
3	A	602	UDP	C5-C4-N3	2.77	118.99	114.84
3	D	602	UDP	C5-C4-N3	2.77	118.99	114.84
2	A	601	FDA	C4-N3-C2	-2.76	122.37	126.34
2	A	601	FDA	O3'-C3'-C2'	2.75	115.46	108.81
2	D	601	FDA	O4-C4-C4X	-2.75	120.94	127.24
3	A	602	UDP	O2-C2-N1	-2.74	119.14	122.79
4	C	601	FAD	C3B-C2B-C1B	2.70	105.04	100.98
4	C	601	FAD	C4X-C4-N3	2.68	120.00	113.19
2	D	601	FDA	C5'-C4'-C3'	-2.63	107.12	112.20
4	C	601	FAD	O5'-C5'-C4'	2.59	116.26	109.36
2	B	601	FDA	C4-C4X-N5	2.58	123.68	116.63
2	B	601	FDA	O3'-C3'-C2'	2.54	114.94	108.81
2	A	601	FDA	O4-C4-C4X	-2.53	121.44	127.24
2	B	601	FDA	C4'-C3'-C2'	2.47	118.51	113.36
2	A	601	FDA	O2'-C2'-C1'	2.46	115.74	109.80
2	B	601	FDA	O4-C4-C4X	-2.45	121.62	127.24
3	D	602	UDP	O4-C4-C5	-2.44	120.87	125.16
4	C	601	FAD	C10-C4X-N5	-2.44	119.68	124.86
3	A	602	UDP	PA-O3A-PB	-2.44	124.45	132.83
3	A	602	UDP	C6-N1-C2	-2.43	117.88	120.99
2	A	601	FDA	C4-C4X-N5	2.43	123.26	116.63
4	C	601	FAD	O4-C4-C4X	-2.42	120.19	126.60
2	D	601	FDA	C4'-C3'-C2'	2.41	118.37	113.36
3	B	602	UDP	O2-C2-N1	-2.40	119.60	122.79
2	B	601	FDA	O5B-C5B-C4B	2.37	117.13	108.99
4	C	601	FAD	C2B-C3B-C4B	2.35	107.20	102.64
3	B	602	UDP	PA-O3A-PB	-2.34	124.78	132.83
3	A	602	UDP	O4-C4-C5	-2.34	121.05	125.16
3	C	602	UDP	O4-C4-C5	-2.32	121.08	125.16
2	A	601	FDA	C4X-C4-N3	2.31	119.19	112.31
4	C	601	FAD	O2A-PA-O5B	2.30	118.42	107.75
2	D	601	FDA	O3'-C3'-C2'	2.29	114.34	108.81
2	D	601	FDA	C4X-C4-N3	2.28	119.11	112.31
3	B	602	UDP	O4-C4-C5	-2.26	121.18	125.16
3	B	602	UDP	C5-C6-N1	-2.25	118.04	121.81
2	D	601	FDA	O4B-C4B-C3B	-2.24	100.68	105.11
2	A	601	FDA	P-O3P-PA	-2.22	125.21	132.83
2	B	601	FDA	O4B-C1B-C2B	-2.17	103.75	106.93

Continued on next page...

Continued from previous page...

Mol	Chain	Res	Type	Atoms	Z	Observed(°)	Ideal(°)
2	D	601	FDA	N3-C2-N1	2.16	119.27	115.80
2	D	601	FDA	C2B-C3B-C4B	-2.13	98.49	102.64
4	C	601	FAD	O2P-P-O5'	2.08	117.39	107.75
4	C	601	FAD	C1'-C2'-C3'	2.06	115.53	109.79
2	A	601	FDA	C4'-C3'-C2'	2.03	117.59	113.36
3	C	602	UDP	O2-C2-N1	-2.02	120.10	122.79
2	B	601	FDA	C4X-C4-N3	2.02	118.33	112.31
3	A	602	UDP	C5-C6-N1	-2.02	118.43	121.81
4	C	601	FAD	C9-C9A-N10	-2.01	119.12	121.84
3	D	602	UDP	O2-C2-N1	-2.00	120.12	122.79

There are no chirality outliers.

All (43) torsion outliers are listed below:

Mol	Chain	Res	Type	Atoms
2	A	601	FDA	N10-C1'-C2'-O2'
2	A	601	FDA	PA-O3P-P-O5'
2	D	601	FDA	N10-C1'-C2'-O2'
2	D	601	FDA	C1'-C2'-C3'-O3'
3	A	602	UDP	PA-O3A-PB-O2B
3	A	602	UDP	PA-O3A-PB-O3B
3	B	602	UDP	C5'-O5'-PA-O1A
3	B	602	UDP	C5'-O5'-PA-O3A
3	B	602	UDP	PA-O3A-PB-O2B
3	B	602	UDP	PA-O3A-PB-O3B
3	C	602	UDP	PA-O3A-PB-O3B
3	D	602	UDP	PA-O3A-PB-O3B
4	C	601	FAD	C1'-C2'-C3'-O3'
4	C	601	FAD	C1'-C2'-C3'-C4'
4	C	601	FAD	O2'-C2'-C3'-O3'
4	C	601	FAD	O2'-C2'-C3'-C4'
2	D	601	FDA	O4B-C4B-C5B-O5B
2	A	601	FDA	C2'-C3'-C4'-O4'
2	B	601	FDA	P-O3P-PA-O5B
4	C	601	FAD	PA-O3P-P-O5'
4	C	601	FAD	C5'-O5'-P-O3P
3	B	602	UDP	C5'-O5'-PA-O2A
2	B	601	FDA	N10-C1'-C2'-O2'
3	B	602	UDP	O4'-C4'-C5'-O5'
2	A	601	FDA	O4B-C4B-C5B-O5B
3	A	602	UDP	PA-O3A-PB-O1B
3	C	602	UDP	O4'-C1'-N1-C6

Continued on next page...

Continued from previous page...

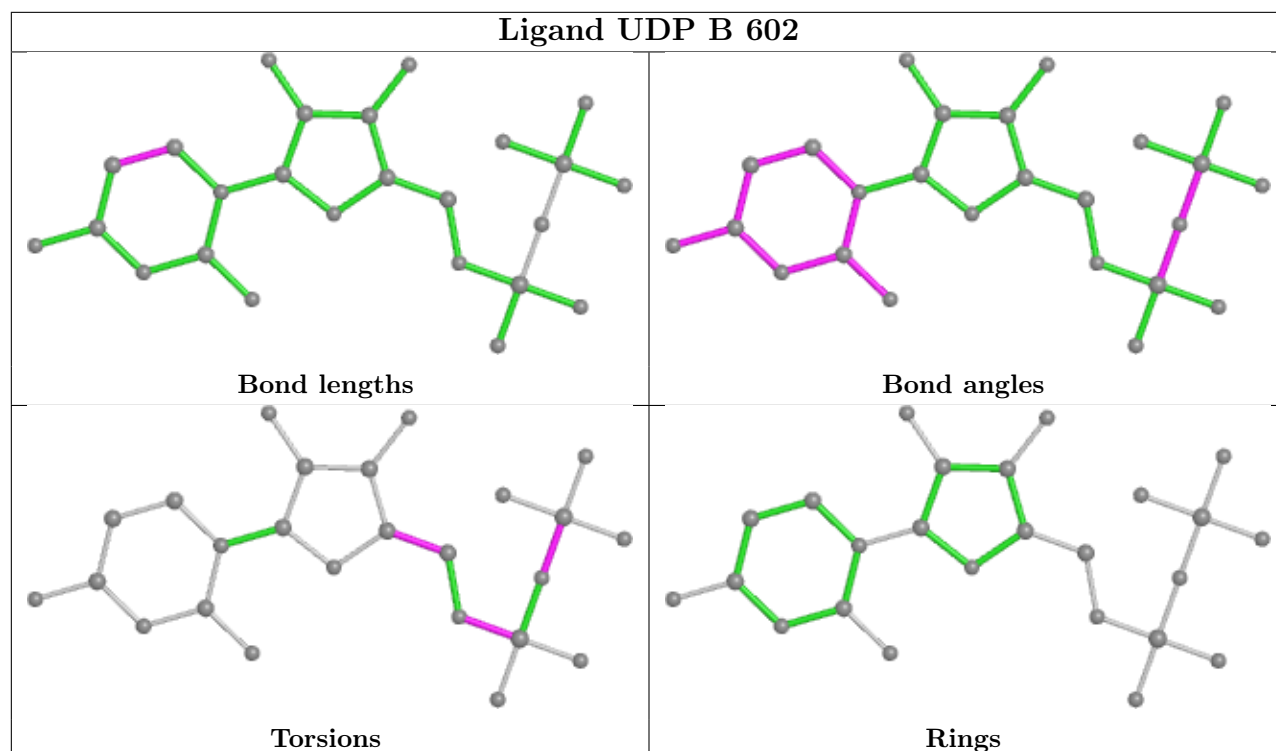
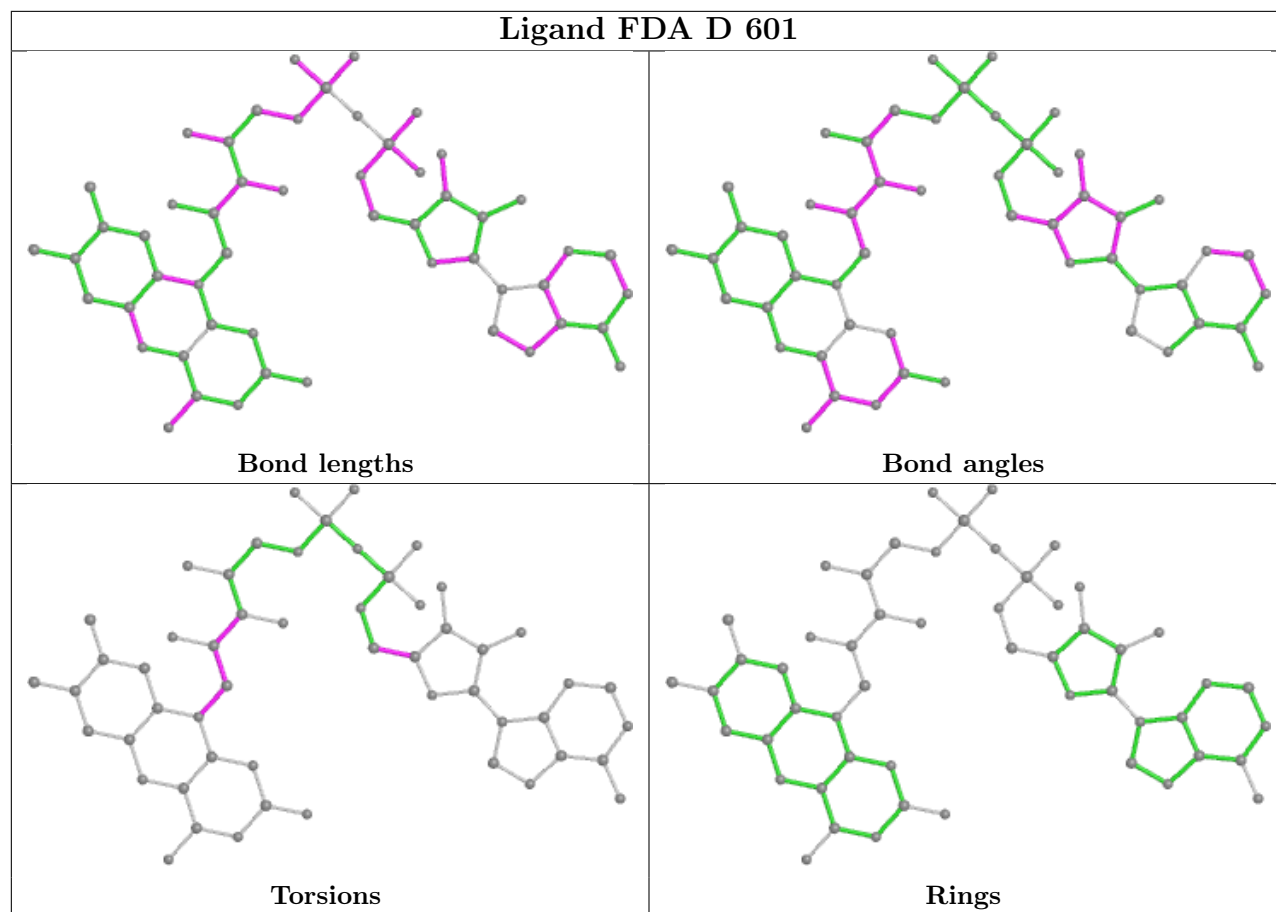
Mol	Chain	Res	Type	Atoms
3	C	602	UDP	PA-O3A-PB-O1B
3	D	602	UDP	PA-O3A-PB-O1B
3	C	602	UDP	C2'-C1'-N1-C6
3	C	602	UDP	O4'-C1'-N1-C2
2	B	601	FDA	C3B-C4B-C5B-O5B
3	C	602	UDP	PA-O3A-PB-O2B
3	D	602	UDP	PA-O3A-PB-O2B
2	D	601	FDA	C2'-C1'-N10-C10
3	B	602	UDP	C3'-C4'-C5'-O5'
2	A	601	FDA	C2'-C3'-C4'-C5'
3	A	602	UDP	C5'-O5'-PA-O1A
2	B	601	FDA	O4B-C4B-C5B-O5B
4	C	601	FAD	O4B-C4B-C5B-O5B
2	A	601	FDA	C1'-C2'-C3'-O3'
2	B	601	FDA	C1'-C2'-C3'-O3'
3	C	602	UDP	C2'-C1'-N1-C2

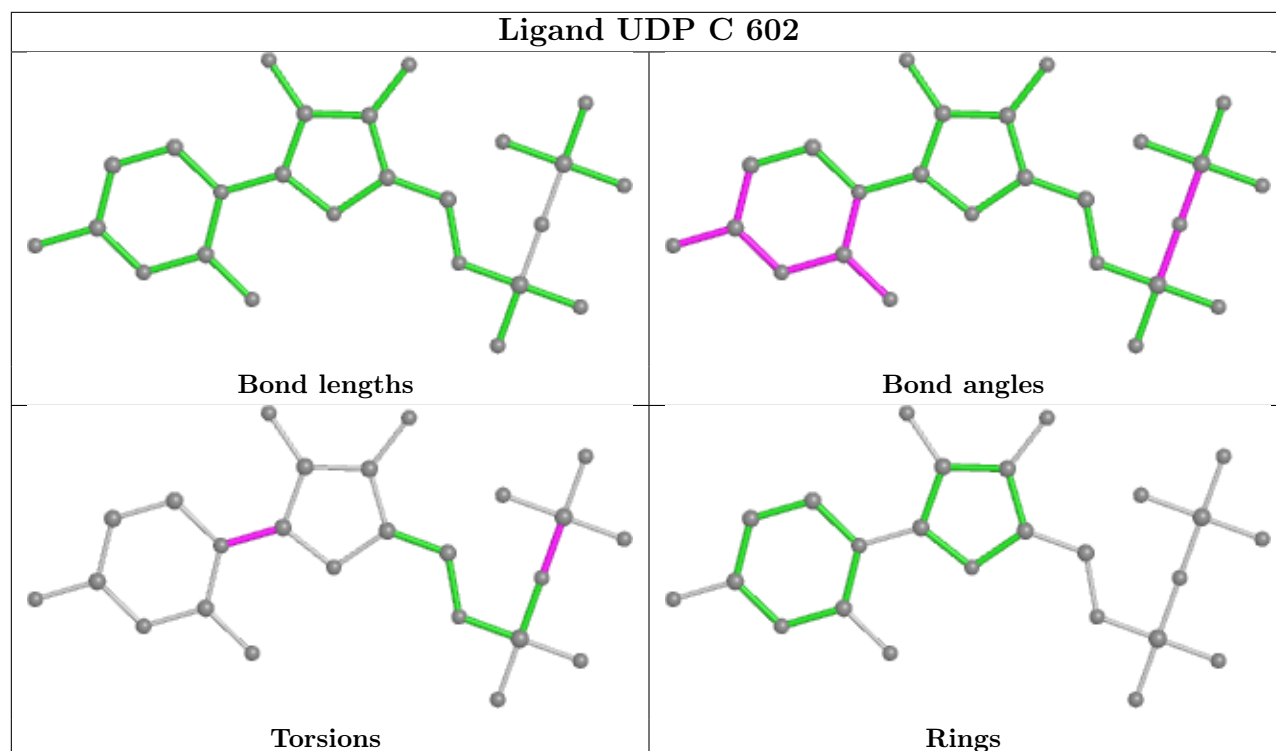
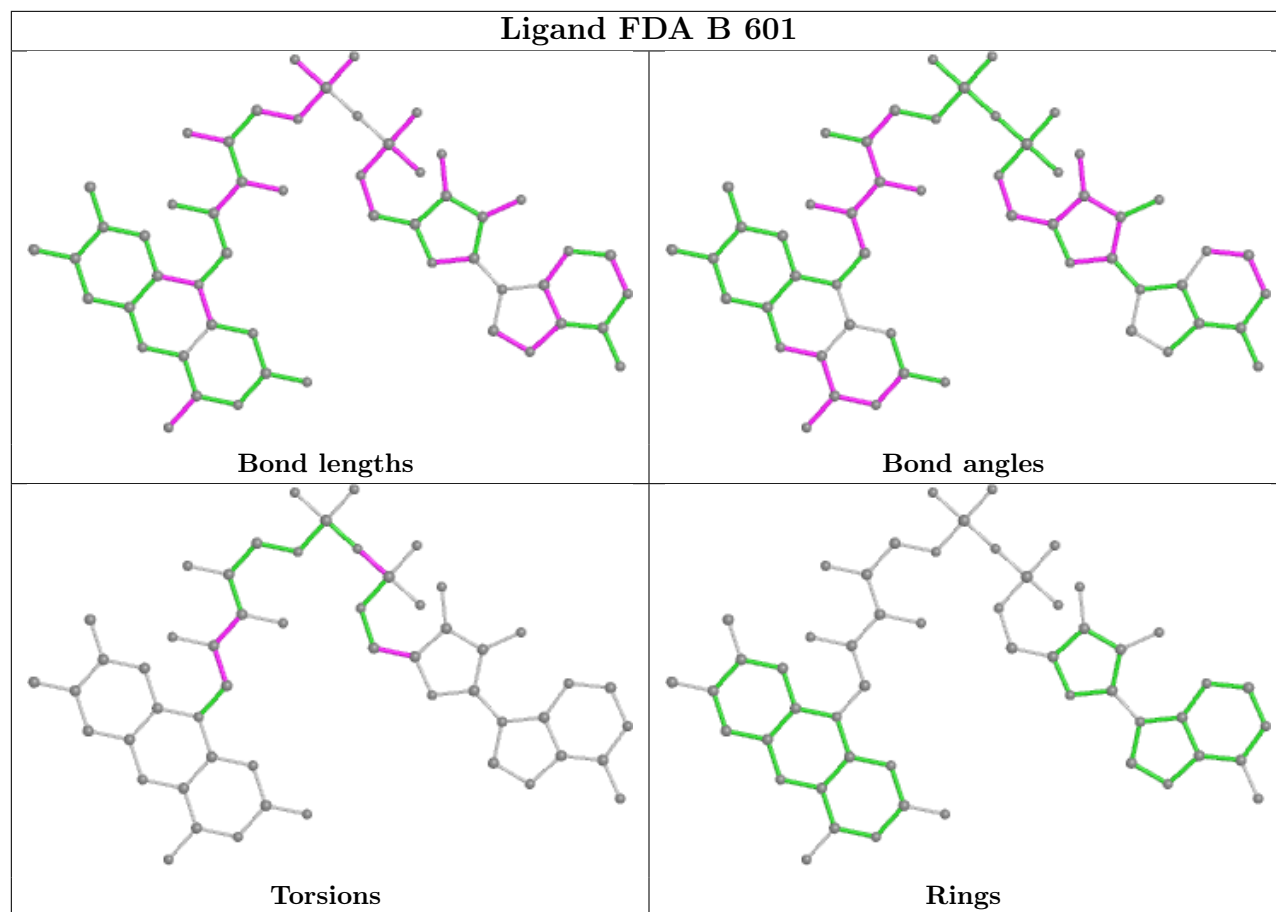
There are no ring outliers.

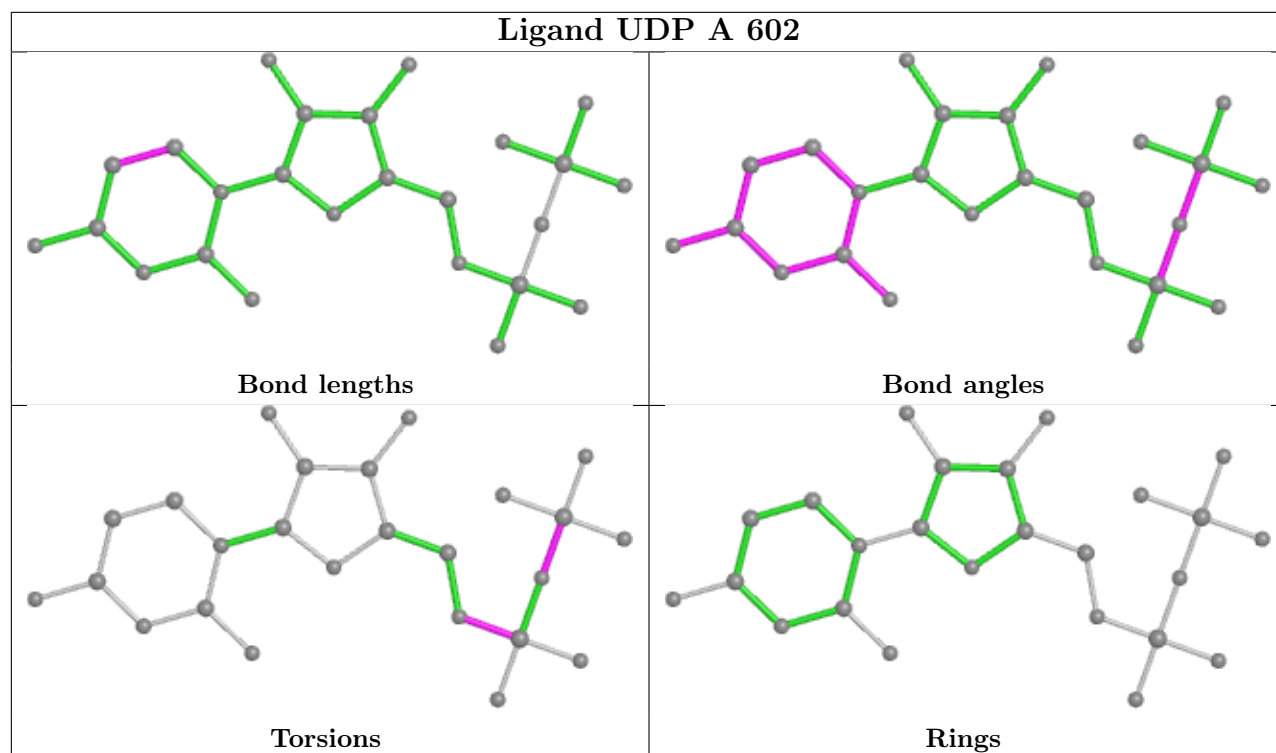
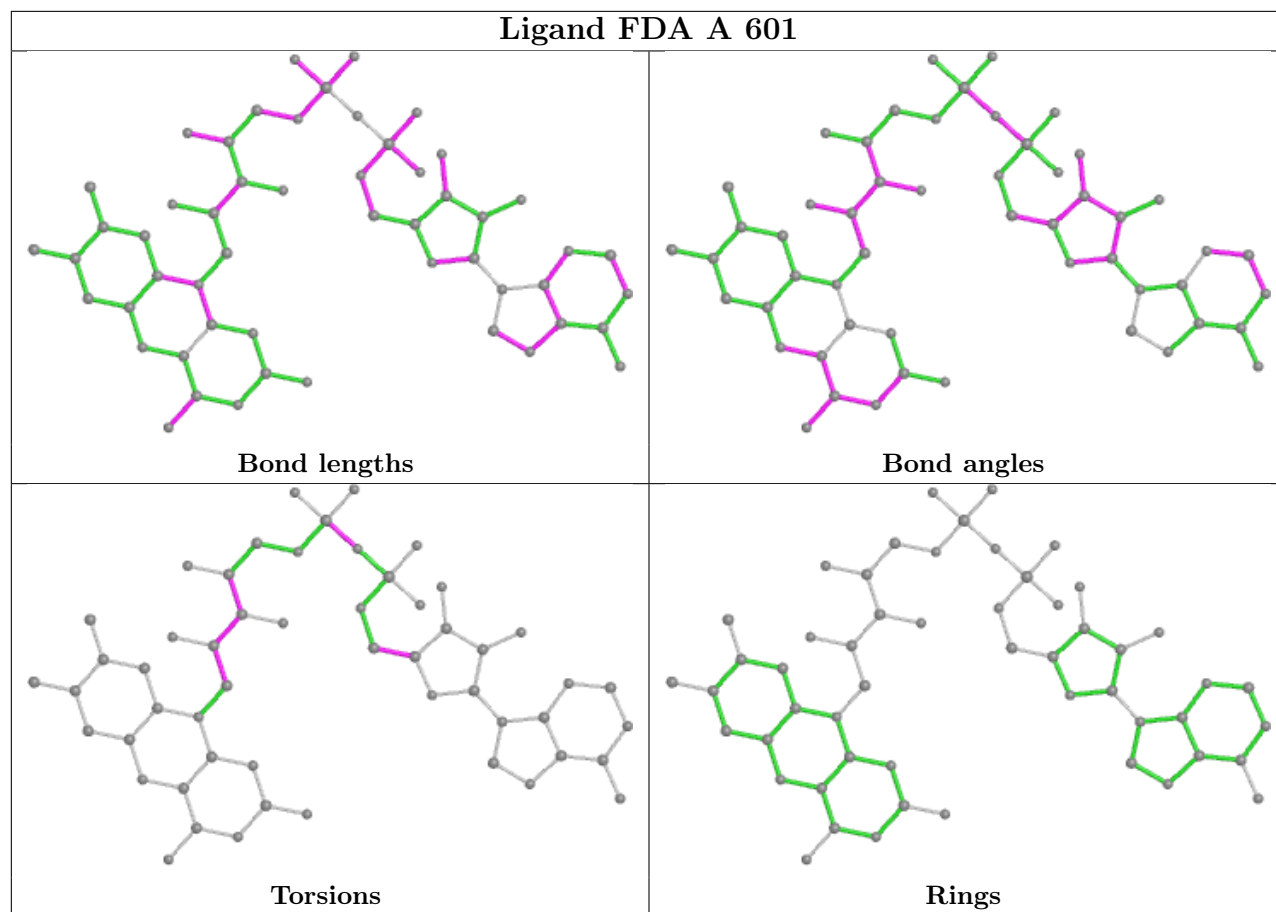
8 monomers are involved in 19 short contacts:

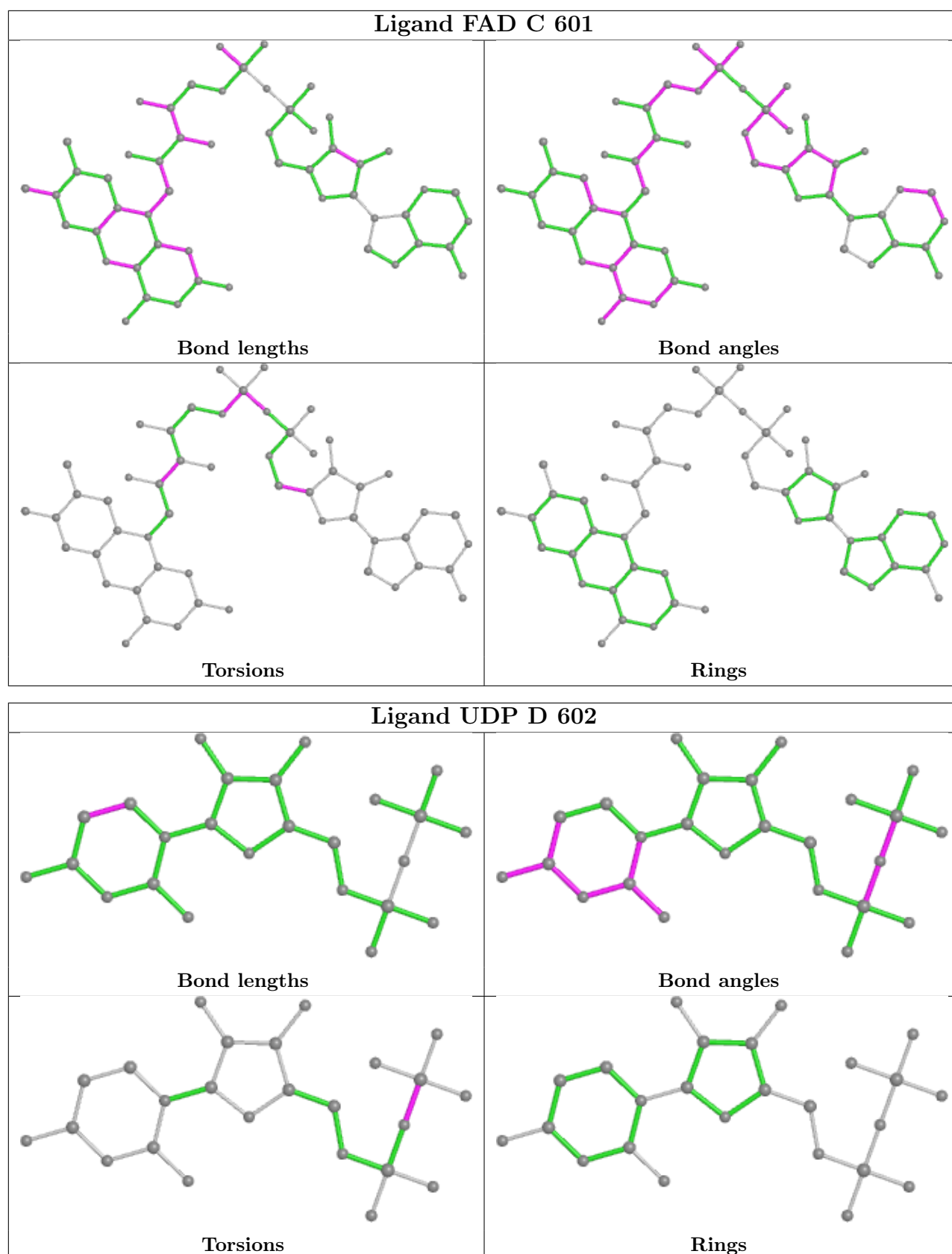
Mol	Chain	Res	Type	Clashes	Symm-Clashes
2	D	601	FDA	3	0
3	B	602	UDP	1	0
2	B	601	FDA	5	0
3	C	602	UDP	2	0
2	A	601	FDA	2	0
3	A	602	UDP	1	0
4	C	601	FAD	3	0
3	D	602	UDP	2	0

The following is a two-dimensional graphical depiction of Mogul quality analysis of bond lengths, bond angles, torsion angles, and ring geometry for all instances of the Ligand of Interest. In addition, ligands with molecular weight > 250 and outliers as shown on the validation Tables will also be included. For torsion angles, if less than 5% of the Mogul distribution of torsion angles is within 10 degrees of the torsion angle in question, then that torsion angle is considered an outlier. Any bond that is central to one or more torsion angles identified as an outlier by Mogul will be highlighted in the graph. For rings, the root-mean-square deviation (RMSD) between the ring in question and similar rings identified by Mogul is calculated over all ring torsion angles. If the average RMSD is greater than 60 degrees and the minimal RMSD between the ring in question and any Mogul-identified rings is also greater than 60 degrees, then that ring is considered an outlier. The outliers are highlighted in purple. The color gray indicates Mogul did not find sufficient equivalents in the CSD to analyse the geometry.









5.7 Other polymers [i](#)

There are no such residues in this entry.

5.8 Polymer linkage issues [i](#)

There are no chain breaks in this entry.

6 Fit of model and data

6.1 Protein, DNA and RNA chains

In the following table, the column labelled ‘#RSRZ > 2’ contains the number (and percentage) of RSRZ outliers, followed by percent RSRZ outliers for the chain as percentile scores relative to all X-ray entries and entries of similar resolution. The OWAB column contains the minimum, median, 95th percentile and maximum values of the occupancy-weighted average B-factor per residue. The column labelled ‘Q < 0.9’ lists the number of (and percentage) of residues with an average occupancy less than 0.9.

Mol	Chain	Analysed	<RSRZ>	#RSRZ>2	OWAB(Å ²)	Q<0.9
1	A	517/517 (100%)	0.29	21 (4%) 37 44	18, 44, 85, 112	0
1	B	510/517 (98%)	0.22	19 (3%) 41 49	17, 43, 83, 112	0
1	C	516/517 (99%)	0.29	40 (7%) 13 15	18, 45, 94, 152	0
1	D	513/517 (99%)	0.25	21 (4%) 37 44	19, 49, 88, 126	0
All	All	2056/2068 (99%)	0.26	101 (4%) 29 36	17, 46, 88, 152	0

All (101) RSRZ outliers are listed below:

Mol	Chain	Res	Type	RSRZ
1	C	507	SER	7.8
1	C	514	HIS	7.4
1	B	511	LEU	6.4
1	C	184	ALA	5.3
1	B	509	ALA	4.3
1	D	280	ASP	4.1
1	D	511	LEU	4.1
1	A	2	THR	4.0
1	C	186	PRO	3.9
1	C	2	THR	3.9
1	C	515	HIS	3.9
1	D	514	HIS	3.8
1	D	310	ILE	3.8
1	A	511	LEU	3.8
1	C	183	VAL	3.8
1	A	358	GLN	3.7
1	B	309	ARG	3.7
1	C	358	GLN	3.7
1	C	511	LEU	3.6
1	C	304	GLY	3.6
1	C	201	ALA	3.5

Continued on next page...

Continued from previous page...

Mol	Chain	Res	Type	RSRZ
1	D	201	ALA	3.5
1	C	202	GLY	3.5
1	C	516	HIS	3.4
1	D	62	GLY	3.4
1	C	107	GLN	3.3
1	A	62	GLY	3.3
1	B	110	ILE	3.2
1	C	207	ASN	3.2
1	C	513	HIS	3.2
1	C	506	LYS	3.2
1	D	83	GLU	3.2
1	D	183	VAL	3.2
1	C	185	ALA	3.1
1	C	106	PHE	3.1
1	C	512	GLU	3.1
1	B	2	THR	3.1
1	C	359	SER	3.1
1	C	309	ARG	3.0
1	B	308	GLU	3.0
1	A	516	HIS	3.0
1	C	179	LEU	3.0
1	C	510	GLN	3.0
1	D	2	THR	3.0
1	D	207	ASN	2.9
1	D	202	GLY	2.8
1	B	196	ILE	2.8
1	D	110	ILE	2.8
1	C	361	GLU	2.8
1	A	283	LEU	2.7
1	B	353	ASP	2.7
1	A	281	GLN	2.7
1	B	198	GLY	2.7
1	C	116	GLU	2.7
1	D	281	GLN	2.6
1	C	115	LYS	2.6
1	C	206	PRO	2.6
1	B	3	HIS	2.6
1	D	276	GLU	2.6
1	C	509	ALA	2.6
1	C	401	LEU	2.6
1	C	62	GLY	2.6
1	B	202	GLY	2.5

Continued on next page...

Continued from previous page...

Mol	Chain	Res	Type	RSRZ
1	C	305	SER	2.5
1	A	120	LYS	2.5
1	A	123	ASP	2.5
1	B	310	ILE	2.4
1	A	119	VAL	2.4
1	D	291	PHE	2.4
1	A	321	ASP	2.4
1	A	201	ALA	2.3
1	B	98	GLN	2.3
1	C	321	ASP	2.3
1	B	341	GLU	2.3
1	D	244	LYS	2.3
1	D	283	LEU	2.3
1	C	517	HIS	2.2
1	B	120	LYS	2.2
1	B	199	LYS	2.2
1	B	403	PRO	2.2
1	B	201	ALA	2.2
1	C	362	ALA	2.2
1	A	200	THR	2.2
1	D	512	GLU	2.2
1	C	205	GLY	2.2
1	C	147	VAL	2.2
1	A	197	LEU	2.2
1	A	110	ILE	2.1
1	C	364	GLU	2.1
1	D	379	MET	2.1
1	A	512	GLU	2.1
1	A	199	LYS	2.1
1	B	186	PRO	2.1
1	A	117	GLU	2.1
1	A	341	GLU	2.1
1	D	308	GLU	2.1
1	A	246	ASN	2.1
1	C	308	GLU	2.1
1	D	82	LYS	2.0
1	C	123	ASP	2.0
1	A	517	HIS	2.0

6.2 Non-standard residues in protein, DNA, RNA chains [i](#)

There are no non-standard protein/DNA/RNA residues in this entry.

6.3 Carbohydrates [i](#)

There are no monosaccharides in this entry.

6.4 Ligands [i](#)

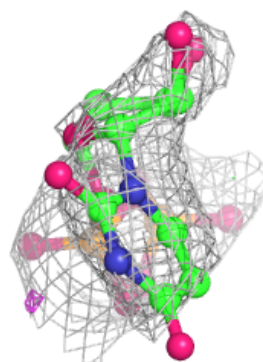
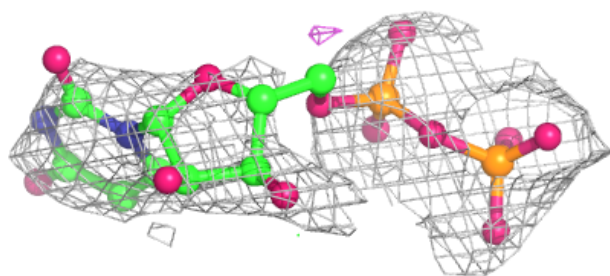
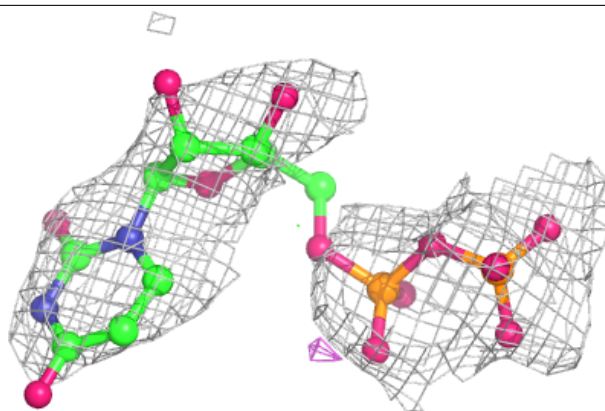
In the following table, the Atoms column lists the number of modelled atoms in the group and the number defined in the chemical component dictionary. The B-factors column lists the minimum, median, 95th percentile and maximum values of B factors of atoms in the group. The column labelled 'Q< 0.9' lists the number of atoms with occupancy less than 0.9.

Mol	Type	Chain	Res	Atoms	RSCC	RSR	B-factors(Å ²)	Q<0.9
3	UDP	C	602	25/25	0.80	0.26	68,99,141,156	0
3	UDP	D	602	25/25	0.91	0.19	55,95,117,134	0
3	UDP	B	602	25/25	0.92	0.18	45,79,109,134	0
3	UDP	A	602	25/25	0.94	0.17	23,66,98,123	0
2	FDA	A	601	53/53	0.97	0.19	17,38,65,71	0
2	FDA	D	601	53/53	0.97	0.16	32,53,78,99	0
2	FDA	B	601	53/53	0.98	0.18	13,33,56,67	0
4	FAD	C	601	53/53	0.98	0.18	16,39,65,74	0

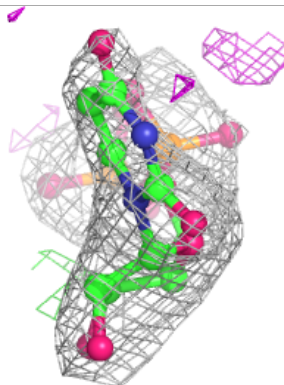
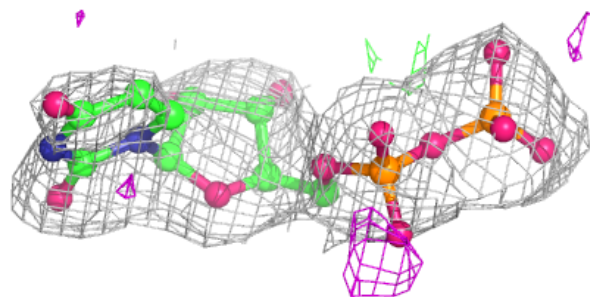
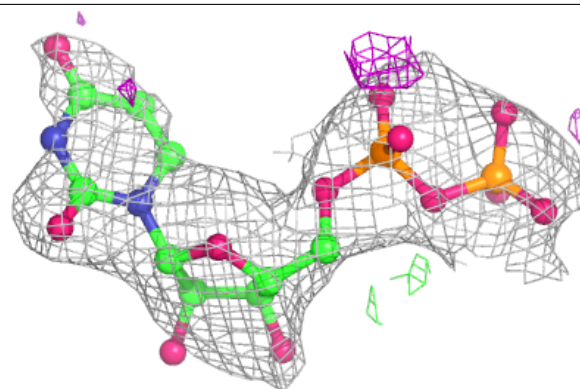
The following is a graphical depiction of the model fit to experimental electron density of all instances of the Ligand of Interest. In addition, ligands with molecular weight > 250 and outliers as shown on the geometry validation Tables will also be included. Each fit is shown from different orientation to approximate a three-dimensional view.

Electron density around UDP C 602:

$2mF_o-DF_c$ (at 0.7 rmsd) in gray
 mF_o-DF_c (at 3 rmsd) in purple (negative)
and green (positive)

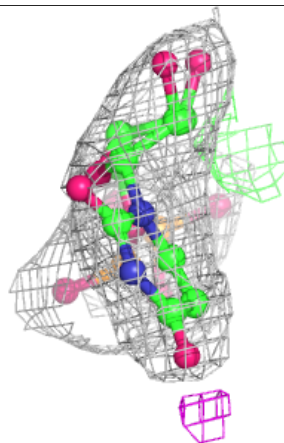
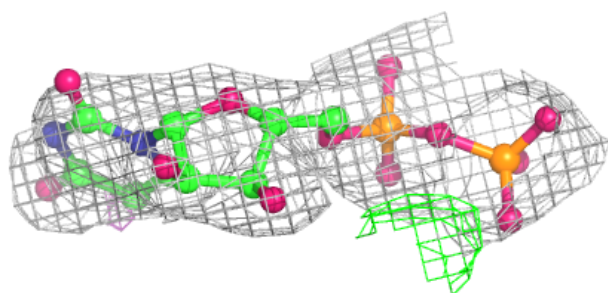
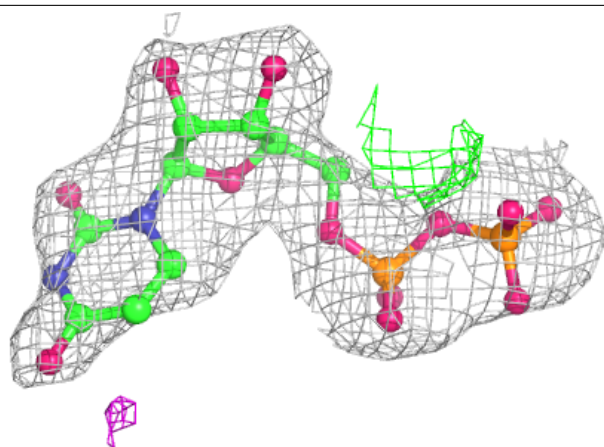
**Electron density around UDP D 602:**

$2mF_o-DF_c$ (at 0.7 rmsd) in gray
 mF_o-DF_c (at 3 rmsd) in purple (negative)
and green (positive)

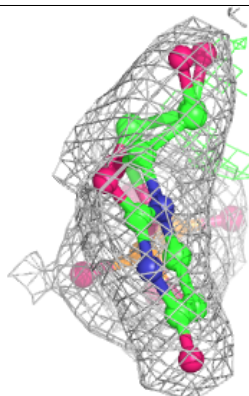
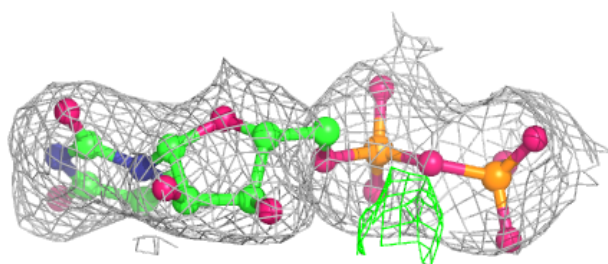
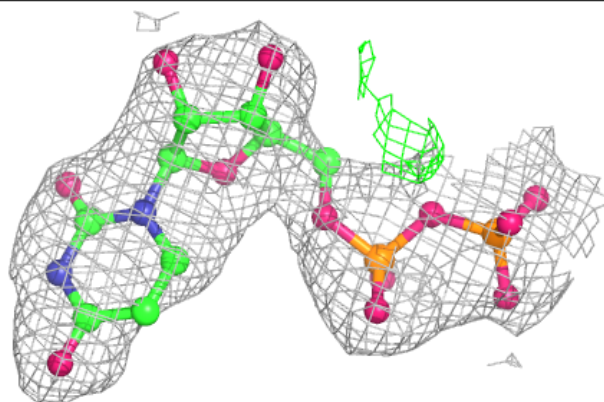


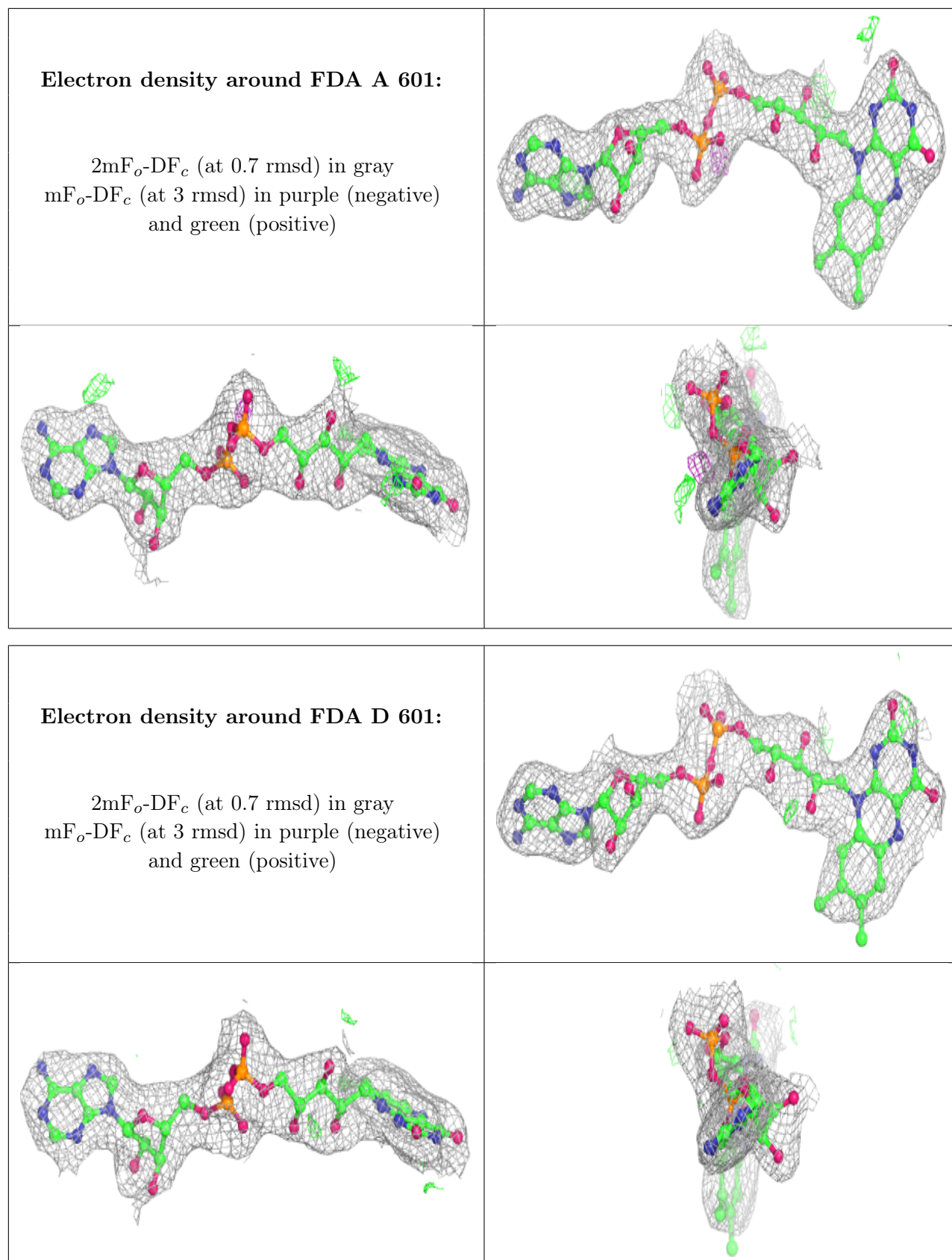
Electron density around UDP B 602:

$2mF_o-DF_c$ (at 0.7 rmsd) in gray
 mF_o-DF_c (at 3 rmsd) in purple (negative)
and green (positive)

**Electron density around UDP A 602:**

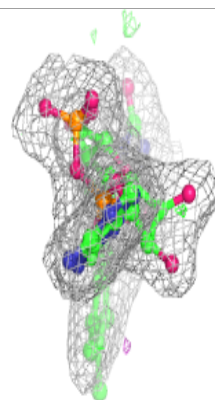
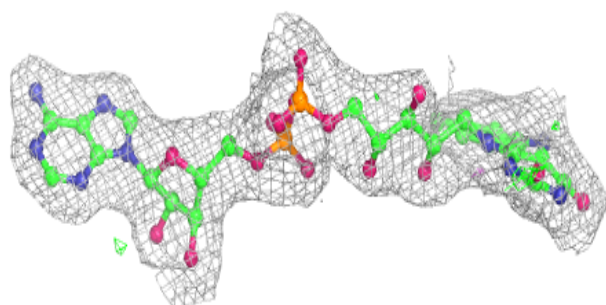
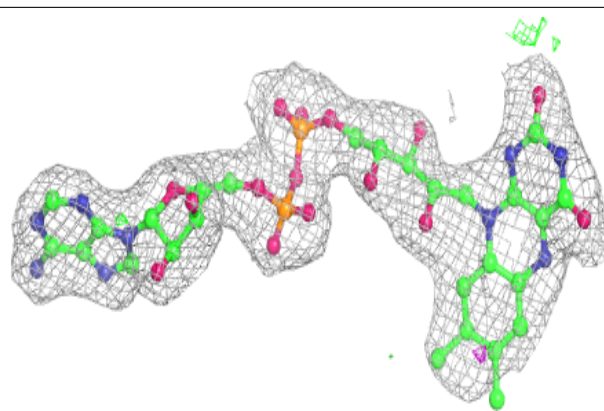
$2mF_o-DF_c$ (at 0.7 rmsd) in gray
 mF_o-DF_c (at 3 rmsd) in purple (negative)
and green (positive)



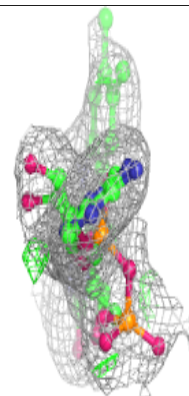
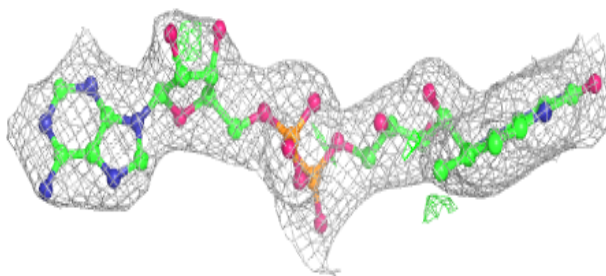
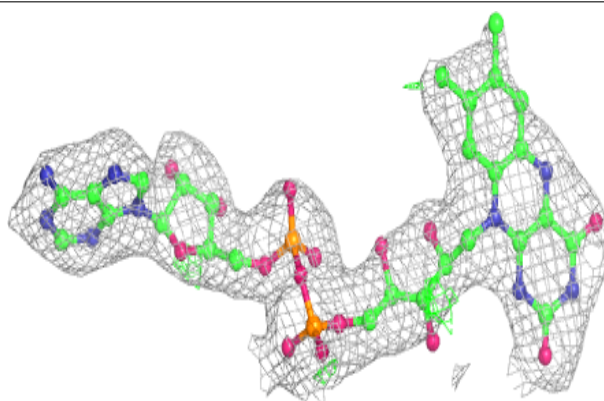


Electron density around FDA B 601:

$2mF_o-DF_c$ (at 0.7 rmsd) in gray
 mF_o-DF_c (at 3 rmsd) in purple (negative)
and green (positive)

**Electron density around FAD C 601:**

$2mF_o-DF_c$ (at 0.7 rmsd) in gray
 mF_o-DF_c (at 3 rmsd) in purple (negative)
and green (positive)



6.5 Other polymers [i](#)

There are no such residues in this entry.