



Full wwPDB X-ray Structure Validation Report ⓘ

Jun 18, 2024 – 10:39 AM EDT

PDB ID : 3VFJ
Title : The structure of monodechloro-teicoplanin in complex with its ligand, using MBP as a ligand carrier
Authors : Economou, N.J.; Weeks, S.D.; Grasty, K.C.; Loll, P.J.
Deposited on : 2012-01-09
Resolution : 2.05 Å (reported)

This is a Full wwPDB X-ray Structure Validation Report for a publicly released PDB entry.

We welcome your comments at validation@mail.wwpdb.org

A user guide is available at

<https://www.wwpdb.org/validation/2017/XrayValidationReportHelp>

with specific help available everywhere you see the ⓘ symbol.

The types of validation reports are described at

<http://www.wwpdb.org/validation/2017/FAQs#types>.

The following versions of software and data (see [references ⓘ](#)) were used in the production of this report:

MolProbity : 4.02b-467
Mogul : 2022.3.0, CSD as543be (2022)
Xtriage (Phenix) : 1.20.1
EDS : 2.37.1
Percentile statistics : 20191225.v01 (using entries in the PDB archive December 25th 2019)
Refmac : 5.8.0158
CCP4 : 7.0.044 (Gargrove)
Ideal geometry (proteins) : Engh & Huber (2001)
Ideal geometry (DNA, RNA) : Parkinson et al. (1996)
Validation Pipeline (wwPDB-VP) : 2.37.1

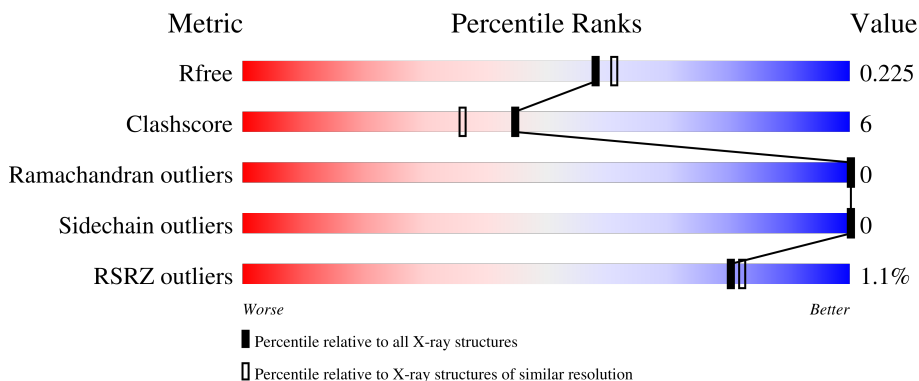
1 Overall quality at a glance

The following experimental techniques were used to determine the structure:

X-RAY DIFFRACTION

The reported resolution of this entry is 2.05 Å.

Percentile scores (ranging between 0-100) for global validation metrics of the entry are shown in the following graphic. The table shows the number of entries on which the scores are based.



Metric	Whole archive (#Entries)	Similar resolution (#Entries, resolution range(Å))
R_{free}	130704	1692 (2.04-2.04)
Clashscore	141614	1773 (2.04-2.04)
Ramachandran outliers	138981	1752 (2.04-2.04)
Sidechain outliers	138945	1752 (2.04-2.04)
RSRZ outliers	127900	1672 (2.04-2.04)

The table below summarises the geometric issues observed across the polymeric chains and their fit to the electron density. The red, orange, yellow and green segments of the lower bar indicate the fraction of residues that contain outliers for ≥ 3 , 2, 1 and 0 types of geometric quality criteria respectively. A grey segment represents the fraction of residues that are not modelled. The numeric value for each fraction is indicated below the corresponding segment, with a dot representing fractions $\leq 5\%$. The upper red bar (where present) indicates the fraction of residues that have poor fit to the electron density. The numeric value is given above the bar.

Mol	Chain	Length	Quality of chain
1	A	378	
2	G	7	

2 Entry composition

There are 10 unique types of molecules in this entry. The entry contains 3222 atoms, of which 0 are hydrogens and 0 are deuteriums.

In the tables below, the ZeroOcc column contains the number of atoms modelled with zero occupancy, the AltConf column contains the number of residues with at least one atom in alternate conformation and the Trace column contains the number of residues modelled with at most 2 atoms.

- Molecule 1 is a protein called Maltose-binding periplasmic protein, C-terminal fused by Cys-Lys-D-Ala-D-Ala.

Mol	Chain	Residues	Atoms					ZeroOcc	AltConf	Trace
			Total	C	N	O	S			
1	A	377	2909	1869	474	559	7	0	0	0

There are 12 discrepancies between the modelled and reference sequences:

Chain	Residue	Modelled	Actual	Comment	Reference
A	0	MET	-	expression tag	UNP P0AEX9
A	367	ASN	-	SEE REMARK 999	UNP P0AEX9
A	368	ALA	-	SEE REMARK 999	UNP P0AEX9
A	369	ALA	-	SEE REMARK 999	UNP P0AEX9
A	370	ALA	-	SEE REMARK 999	UNP P0AEX9
A	371	ALA	-	SEE REMARK 999	UNP P0AEX9
A	372	ALA	-	SEE REMARK 999	UNP P0AEX9
A	373	GLY	-	SEE REMARK 999	UNP P0AEX9
A	374	CCS	-	SEE REMARK 999	UNP P0AEX9
A	375	LYS	-	SEE REMARK 999	UNP P0AEX9
A	376	DAL	-	SEE REMARK 999	UNP P0AEX9
A	377	DAL	-	SEE REMARK 999	UNP P0AEX9

- Molecule 2 is a protein called MonodeChloro- Teicoplanin A2-2.

Mol	Chain	Residues	Atoms					ZeroOcc	AltConf	Trace
			Total	C	Cl	N	O			
2	G	7	84	58	1	7	18	0	0	0

- Molecule 3 is ZINC ION (three-letter code: ZN) (formula: Zn).

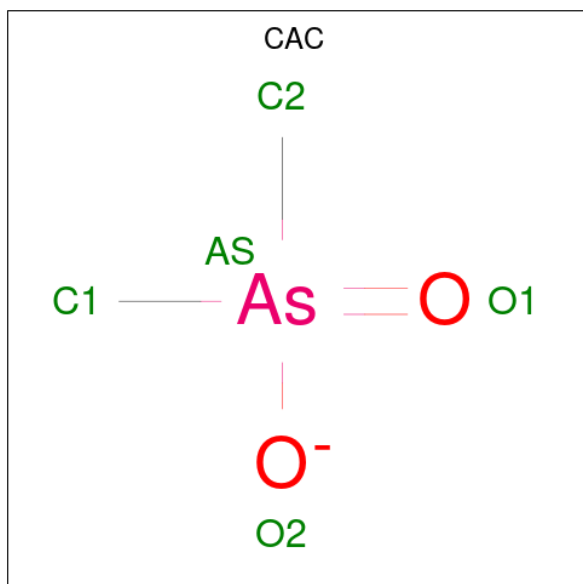
Mol	Chain	Residues	Atoms		ZeroOcc	AltConf
3	A	8	Total	Zn	0	0
			8	8		

- Molecule 4 is ACETATE ION (three-letter code: ACT) (formula: $C_2H_3O_2$).



Mol	Chain	Residues	Atoms			ZeroOcc	AltConf
4	A	1	Total	C	O	0	0
			4	2	2		
4	A	1	Total	C	O	0	0
			4	2	2		

- Molecule 5 is CACODYLATE ION (three-letter code: CAC) (formula: $C_2H_6AsO_2$).



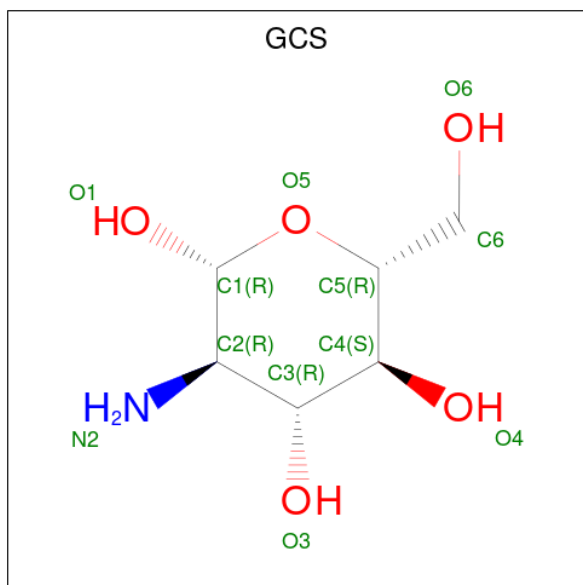
Mol	Chain	Residues	Atoms				ZeroOcc	AltConf
5	A	1	Total	As	C	O	0	0
			5	1	2	2		

Continued on next page...

Continued from previous page...

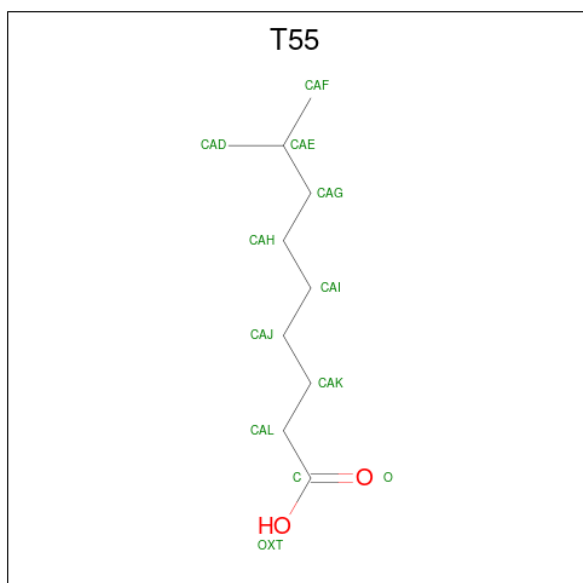
Mol	Chain	Residues	Atoms				ZeroOcc	AltConf
			Total	As	C	O		
5	G	1	5	1	2	2	0	0

- Molecule 6 is 2-amino-2-deoxy-beta-D-glucopyranose (three-letter code: GCS) (formula: $C_6H_{13}NO_5$).



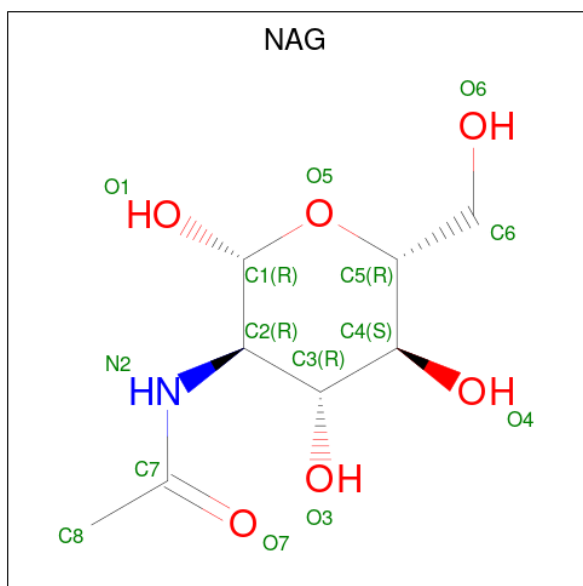
Mol	Chain	Residues	Atoms				ZeroOcc	AltConf
			Total	C	N	O		
6	G	1	11	6	1	4	0	0

- Molecule 7 is 8-METHYLNONANOIC ACID (three-letter code: T55) (formula: $C_{10}H_{20}O_2$).



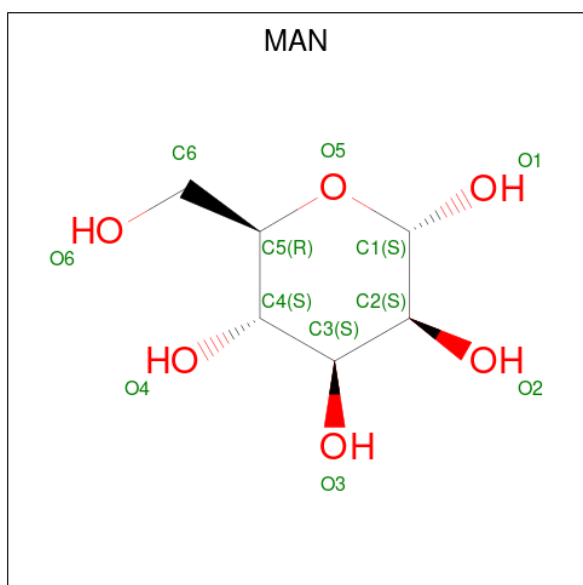
Mol	Chain	Residues	Atoms			ZeroOcc	AltConf
			Total	C	O		
7	G	1	11	10	1	0	0

- Molecule 8 is 2-acetamido-2-deoxy-beta-D-glucopyranose (three-letter code: NAG) (formula: $C_8H_{15}NO_6$).



Mol	Chain	Residues	Atoms				ZeroOcc	AltConf
			Total	C	N	O		
8	G	1	14	8	1	5	0	0

- Molecule 9 is alpha-D-mannopyranose (three-letter code: MAN) (formula: $C_6H_{12}O_6$).



Mol	Chain	Residues	Atoms			ZeroOcc	AltConf
9	G	1	Total	C	O	0	0
			11	6	5		

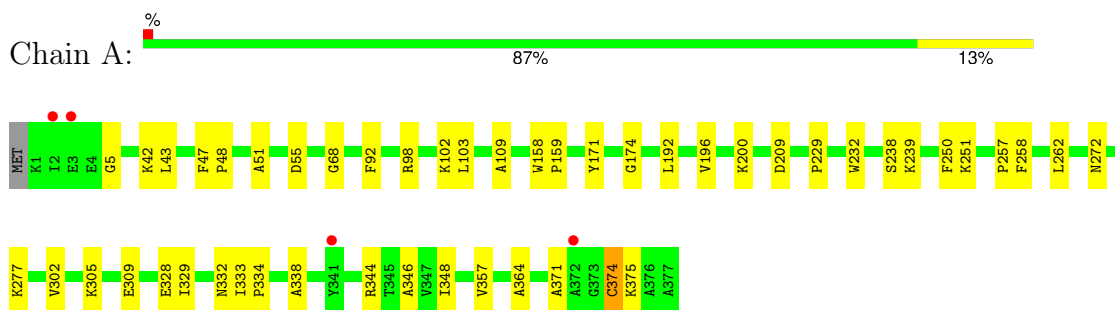
- Molecule 10 is water.

Mol	Chain	Residues	Atoms		ZeroOcc	AltConf
10	A	150	Total	O	0	1
			151	151		
10	G	5	Total	O	0	0
			5	5		

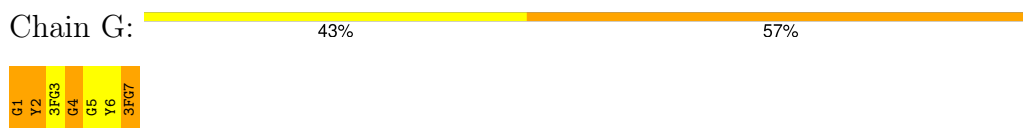
3 Residue-property plots [i](#)

These plots are drawn for all protein, RNA, DNA and oligosaccharide chains in the entry. The first graphic for a chain summarises the proportions of the various outlier classes displayed in the second graphic. The second graphic shows the sequence view annotated by issues in geometry and electron density. Residues are color-coded according to the number of geometric quality criteria for which they contain at least one outlier: green = 0, yellow = 1, orange = 2 and red = 3 or more. A red dot above a residue indicates a poor fit to the electron density ($RSRZ > 2$). Stretches of 2 or more consecutive residues without any outlier are shown as a green connector. Residues present in the sample, but not in the model, are shown in grey.

- Molecule 1: Maltose-binding periplasmic protein, C-terminal fused by Cys-Lys-D-Ala-D-Ala



- Molecule 2: MonodeChloro- Teicoplanin A2-2



4 Data and refinement statistics

Property	Value	Source
Space group	C 2 2 21	Depositor
Cell constants a, b, c, α , β , γ	40.32Å 123.61Å 156.74Å 90.00° 90.00° 90.00°	Depositor
Resolution (Å)	39.89 – 2.05 39.90 – 2.05	Depositor EDS
% Data completeness (in resolution range)	99.9 (39.89-2.05) 100.0 (39.90-2.05)	Depositor EDS
R_{merge}	(Not available)	Depositor
R_{sym}	(Not available)	Depositor
$\langle I/\sigma(I) \rangle$ ¹	3.90 (at 2.05Å)	Xtrriage
Refinement program	PHENIX 1.6.2_432	Depositor
R, R_{free}	0.188 , 0.231 0.186 , 0.225	Depositor DCC
R_{free} test set	1258 reflections (5.00%)	wwPDB-VP
Wilson B-factor (Å ²)	30.0	Xtrriage
Anisotropy	0.277	Xtrriage
Bulk solvent k_{sol} (e/Å ³), B_{sol} (Å ²)	0.40 , 44.8	EDS
L-test for twinning ²	$\langle L \rangle = 0.48$, $\langle L^2 \rangle = 0.31$	Xtrriage
Estimated twinning fraction	No twinning to report.	Xtrriage
F_o, F_c correlation	0.95	EDS
Total number of atoms	3222	wwPDB-VP
Average B, all atoms (Å ²)	31.0	wwPDB-VP

Xtrriage's analysis on translational NCS is as follows: *The largest off-origin peak in the Patterson function is 5.11% of the height of the origin peak. No significant pseudotranslation is detected.*

¹Intensities estimated from amplitudes.

²Theoretical values of $\langle |L| \rangle$, $\langle L^2 \rangle$ for acentric reflections are 0.5, 0.333 respectively for untwinned datasets, and 0.375, 0.2 for perfectly twinned datasets.

5 Model quality [i](#)

5.1 Standard geometry [i](#)

Bond lengths and bond angles in the following residue types are not validated in this section: ACT, OMX, GHP, MAN, 3FG, DAL, CCS, ZN, 3MY, CAC, T55, NAG, GCS

The Z score for a bond length (or angle) is the number of standard deviations the observed value is removed from the expected value. A bond length (or angle) with $|Z| > 5$ is considered an outlier worth inspection. RMSZ is the root-mean-square of all Z scores of the bond lengths (or angles).

Mol	Chain	Bond lengths		Bond angles	
		RMSZ	# Z >5	RMSZ	# Z >5
1	A	0.32	0/2956	0.45	0/4011

There are no bond length outliers.

There are no bond angle outliers.

There are no chirality outliers.

There are no planarity outliers.

5.2 Too-close contacts [i](#)

In the following table, the Non-H and H(model) columns list the number of non-hydrogen atoms and hydrogen atoms in the chain respectively. The H(added) column lists the number of hydrogen atoms added and optimized by MolProbity. The Clashes column lists the number of clashes within the asymmetric unit, whereas Symm-Clashes lists symmetry-related clashes.

Mol	Chain	Non-H	H(model)	H(added)	Clashes	Symm-Clashes
1	A	2909	0	2875	33	0
2	G	84	0	32	6	0
3	A	8	0	0	0	0
4	A	8	0	6	1	0
5	A	5	0	0	2	0
5	G	5	0	0	0	0
6	G	11	0	9	0	0
7	G	11	0	19	1	0
8	G	14	0	13	0	0
9	G	11	0	10	2	0
10	A	151	0	0	2	0
10	G	5	0	0	0	0
All	All	3222	0	2964	39	0

The all-atom clashscore is defined as the number of clashes found per 1000 atoms (including hydrogen atoms). The all-atom clashscore for this structure is 6.

All (39) close contacts within the same asymmetric unit are listed below, sorted by their clash magnitude.

Atom-1	Atom-2	Interatomic distance (Å)	Clash overlap (Å)
1:A:98:ARG:HG2	1:A:103:LEU:HD23	1.77	0.67
1:A:262:LEU:HB2	4:A:410:ACT:H3	1.80	0.62
1:A:68:GLY:HA3	1:A:332:ASN:O	1.99	0.62
1:A:5:GLY:H	1:A:272:ASN:HD21	1.47	0.60
1:A:344:ARG:O	1:A:348:ILE:HG12	2.02	0.59
1:A:42:LYS:HA	1:A:42:LYS:HE2	1.85	0.58
2:G:7:3FG:HZ	9:G:11:MAN:O5	2.04	0.57
1:A:209:ASP:HB2	10:A:551:HOH:O	2.05	0.56
1:A:192:LEU:HD23	1:A:357:VAL:HG13	1.91	0.53
2:G:1:GHP:C6	2:G:3:3FG:HG1	2.40	0.51
1:A:374:CCS:OZ2	5:A:411:CAC:O2	2.29	0.51
1:A:5:GLY:H	1:A:272:ASN:ND2	2.09	0.51
2:G:1:GHP:C6	2:G:3:3FG:CG1	2.89	0.50
2:G:2:3MY:CE2	2:G:4:GHP:HC2	2.42	0.50
1:A:346:ALA:HB2	1:A:364:ALA:HB2	1.94	0.48
1:A:171:TYR:OH	1:A:174:GLY:HA2	2.14	0.48
1:A:338:ALA:CB	1:A:371:ALA:HB3	2.45	0.47
1:A:229:PRO:HA	1:A:232:TRP:CE2	2.49	0.46
1:A:92:PHE:O	1:A:329:ILE:HD11	2.17	0.45
1:A:375:LYS:HG2	2:G:7:3FG:CD2	2.46	0.45
1:A:277:LYS:HB2	10:A:598:HOH:O	2.17	0.45
7:G:9:T55:HAH2	7:G:9:T55:HAK1	1.66	0.43
1:A:238:SER:O	1:A:239:LYS:HB2	2.18	0.43
1:A:333:ILE:HB	1:A:334:PRO:HD2	2.01	0.43
1:A:43:LEU:C	1:A:43:LEU:HD12	2.40	0.43
1:A:196:VAL:O	1:A:200:LYS:HG2	2.19	0.43
1:A:374:CCS:HD3	5:A:411:CAC:C2	2.49	0.43
1:A:98:ARG:HA	1:A:102:LYS:O	2.19	0.42
1:A:338:ALA:HB1	1:A:371:ALA:HB3	2.01	0.42
1:A:305:LYS:O	1:A:309:GLU:HG3	2.19	0.42
1:A:250:PHE:CE2	1:A:251:LYS:HD3	2.55	0.42
2:G:7:3FG:CZ	9:G:11:MAN:O5	2.68	0.42
1:A:158:TRP:N	1:A:159:PRO:CD	2.83	0.41
1:A:159:PRO:HG3	1:A:257:PRO:HA	2.03	0.41
1:A:47:PHE:N	1:A:48:PRO:HD2	2.36	0.41
1:A:51:ALA:HA	1:A:55:ASP:O	2.21	0.41
1:A:109:ALA:HA	1:A:302:VAL:HA	2.01	0.41

Continued on next page...

Continued from previous page...

Atom-1	Atom-2	Interatomic distance (Å)	Clash overlap (Å)
1:A:258:PHE:HA	1:A:328:GLU:O	2.21	0.40
1:A:5:GLY:N	1:A:272:ASN:HD21	2.17	0.40

There are no symmetry-related clashes.

5.3 Torsion angles [i](#)

5.3.1 Protein backbone [i](#)

In the following table, the Percentiles column shows the percent Ramachandran outliers of the chain as a percentile score with respect to all X-ray entries followed by that with respect to entries of similar resolution.

The Analysed column shows the number of residues for which the backbone conformation was analysed, and the total number of residues.

Mol	Chain	Analysed	Favoured	Allowed	Outliers	Percentiles
1	A	373/378 (99%)	369 (99%)	4 (1%)	0	100 100

There are no Ramachandran outliers to report.

5.3.2 Protein sidechains [i](#)

In the following table, the Percentiles column shows the percent sidechain outliers of the chain as a percentile score with respect to all X-ray entries followed by that with respect to entries of similar resolution.

The Analysed column shows the number of residues for which the sidechain conformation was analysed, and the total number of residues.

Mol	Chain	Analysed	Rotameric	Outliers	Percentiles
1	A	295/296 (100%)	295 (100%)	0	100 100

There are no protein residues with a non-rotameric sidechain to report.

Sometimes sidechains can be flipped to improve hydrogen bonding and reduce clashes. All (4) such sidechains are listed below:

Mol	Chain	Res	Type
1	A	49	GLN
1	A	86	GLN

Continued on next page...

Continued from previous page...

Mol	Chain	Res	Type
1	A	272	ASN
1	A	282	ASN

5.3.3 RNA [i](#)

There are no RNA molecules in this entry.

5.4 Non-standard residues in protein, DNA, RNA chains [i](#)

10 non-standard protein/DNA/RNA residues are modelled in this entry.

In the following table, the Counts columns list the number of bonds (or angles) for which Mogul statistics could be retrieved, the number of bonds (or angles) that are observed in the model and the number of bonds (or angles) that are defined in the Chemical Component Dictionary. The Link column lists molecule types, if any, to which the group is linked. The Z score for a bond length (or angle) is the number of standard deviations the observed value is removed from the expected value. A bond length (or angle) with $|Z| > 2$ is considered an outlier worth inspection. RMSZ is the root-mean-square of all Z scores of the bond lengths (or angles).

Mol	Type	Chain	Res	Link	Bond lengths			Bond angles		
					Counts	RMSZ	# Z > 2	Counts	RMSZ	# Z > 2
2	OMX	G	6	2,8	11,13,14	2.46	1 (9%)	15,17,19	2.04	3 (20%)
2	GHP	G	4	2,6	10,11,12	1.06	1 (10%)	11,14,16	0.54	0
2	3FG	G	7	2,9	12,13,13	0.80	0	14,18,18	2.68	3 (21%)
2	GHP	G	1	2	10,11,12	0.93	1 (10%)	11,14,16	1.06	1 (9%)
1	CCS	A	374	1	8,9,10	2.44	1 (12%)	7,10,12	1.45	0
2	GHP	G	5	2	10,11,12	0.71	0	11,14,16	1.16	1 (9%)
2	3MY	G	2	2	12,13,14	1.62	1 (8%)	12,17,19	1.58	4 (33%)
2	3FG	G	3	2	11,12,13	0.74	0	11,16,18	0.69	0

In the following table, the Chirals column lists the number of chiral outliers, the number of chiral centers analysed, the number of these observed in the model and the number defined in the Chemical Component Dictionary. Similar counts are reported in the Torsion and Rings columns. '-' means no outliers of that kind were identified.

Mol	Type	Chain	Res	Link	Chirals	Torsions	Rings
2	OMX	G	6	2,8	-	1/9/10/12	0/1/1/1
2	GHP	G	4	2,6	-	0/4/6/8	0/1/1/1
2	3FG	G	7	2,9	-	3/8/8/8	0/1/1/1
2	GHP	G	1	2	-	0/4/6/8	0/1/1/1

Continued on next page...

Continued from previous page...

Mol	Type	Chain	Res	Link	Chirals	Torsions	Rings
1	CCS	A	374	1	-	2/6/8/10	-
2	GHP	G	5	2	-	0/4/6/8	0/1/1/1
2	3MY	G	2	2	-	0/5/6/8	0/1/1/1
2	3FG	G	3	2	-	1/4/6/8	0/1/1/1

All (5) bond length outliers are listed below:

Mol	Chain	Res	Type	Atoms	Z	Observed(Å)	Ideal(Å)
2	G	6	OMX	CG-CB	-7.91	1.40	1.51
1	A	374	CCS	O-C	6.27	1.43	1.20
2	G	2	3MY	CB-CG	-5.21	1.39	1.51
2	G	1	GHP	CA-C	2.63	1.55	1.51
2	G	4	GHP	C1-CA	2.20	1.54	1.52

All (12) bond angle outliers are listed below:

Mol	Chain	Res	Type	Atoms	Z	Observed(°)	Ideal(°)
2	G	6	OMX	CG-CB-CA	-6.69	102.80	111.58
2	G	7	3FG	CD1-CG1-CB	-6.62	114.38	120.09
2	G	7	3FG	CZ-CD1-CG1	5.84	128.49	120.47
2	G	2	3MY	CE1-CZ-CE2	3.28	121.57	118.49
2	G	7	3FG	CD2-CZ-CD1	-3.11	115.42	119.26
2	G	5	GHP	C1-CA-C	-2.42	105.30	112.09
2	G	6	OMX	OC-CB-CA	-2.27	102.50	107.49
2	G	6	OMX	O-C-CA	-2.21	119.10	124.77
2	G	2	3MY	CD1-CE1-CZ	-2.15	118.35	120.50
2	G	2	3MY	CD2-CE2-CZ	-2.06	119.72	120.92
2	G	1	GHP	C5-C6-C1	-2.05	119.14	121.18
2	G	2	3MY	CE2-CD2-CG	-2.02	119.16	120.46

There are no chirality outliers.

All (7) torsion outliers are listed below:

Mol	Chain	Res	Type	Atoms
2	G	6	OMX	O-C-CA-CB
2	G	7	3FG	C-CA-CB-CG1
2	G	7	3FG	C-CA-CB-CG2
2	G	3	3FG	C-CA-CB-CG2
1	A	374	CCS	SG-CD-CE-OZ1
1	A	374	CCS	SG-CD-CE-OZ2
2	G	7	3FG	OXT-C-CA-N

There are no ring outliers.

6 monomers are involved in 8 short contacts:

Mol	Chain	Res	Type	Clashes	Symm-Clashes
2	G	4	GHP	1	0
2	G	7	3FG	3	0
2	G	1	GHP	2	0
1	A	374	CCS	2	0
2	G	2	3MY	1	0
2	G	3	3FG	2	0

5.5 Carbohydrates [i](#)

There are no monosaccharides in this entry.

5.6 Ligand geometry [i](#)

Of 16 ligands modelled in this entry, 8 are monoatomic - leaving 8 for Mogul analysis.

In the following table, the Counts columns list the number of bonds (or angles) for which Mogul statistics could be retrieved, the number of bonds (or angles) that are observed in the model and the number of bonds (or angles) that are defined in the Chemical Component Dictionary. The Link column lists molecule types, if any, to which the group is linked. The Z score for a bond length (or angle) is the number of standard deviations the observed value is removed from the expected value. A bond length (or angle) with $|Z| > 2$ is considered an outlier worth inspection. RMSZ is the root-mean-square of all Z scores of the bond lengths (or angles).

Mol	Type	Chain	Res	Link	Bond lengths			Bond angles		
					Counts	RMSZ	$\# Z > 2$	Counts	RMSZ	$\# Z > 2$
5	CAC	G	104	-	2,4,4	0.77	0	2,6,6	0.55	0
6	GCS	G	8	2,7	11,11,12	0.70	0	13,15,17	1.74	1 (7%)
9	MAN	G	11	2	11,11,12	0.31	0	15,15,17	0.67	0
8	NAG	G	10	2	14,14,15	0.53	0	17,19,21	1.00	0
4	ACT	A	410	3	3,3,3	0.83	0	3,3,3	0.85	0
5	CAC	A	411	-	2,4,4	0.82	0	2,6,6	0.21	0
4	ACT	A	409	-	3,3,3	0.80	0	3,3,3	1.42	0
7	T55	G	9	6	9,10,11	0.36	0	9,10,12	1.02	1 (11%)

In the following table, the Chirals column lists the number of chiral outliers, the number of chiral centers analysed, the number of these observed in the model and the number defined in the Chemical Component Dictionary. Similar counts are reported in the Torsion and Rings columns. '-' means no outliers of that kind were identified.

Mol	Type	Chain	Res	Link	Chirals	Torsions	Rings
8	NAG	G	10	2	-	2/6/23/26	0/1/1/1
9	MAN	G	11	2	-	1/2/19/22	0/1/1/1
7	T55	G	9	6	-	1/8/8/9	-
6	GCS	G	8	2,7	-	0/2/19/22	0/1/1/1

There are no bond length outliers.

All (2) bond angle outliers are listed below:

Mol	Chain	Res	Type	Atoms	Z	Observed(°)	Ideal(°)
6	G	8	GCS	C1-C2-N2	-5.35	102.21	111.38
7	G	9	T55	CAK-CAJ-CAI	-2.10	103.77	114.37

There are no chirality outliers.

All (4) torsion outliers are listed below:

Mol	Chain	Res	Type	Atoms
7	G	9	T55	O-C-CAL-CAK
8	G	10	NAG	C8-C7-N2-C2
8	G	10	NAG	O7-C7-N2-C2
9	G	11	MAN	O5-C5-C6-O6

There are no ring outliers.

4 monomers are involved in 6 short contacts:

Mol	Chain	Res	Type	Clashes	Symm-Clashes
9	G	11	MAN	2	0
4	A	410	ACT	1	0
5	A	411	CAC	2	0
7	G	9	T55	1	0

5.7 Other polymers [i](#)

There are no such residues in this entry.

5.8 Polymer linkage issues [i](#)

There are no chain breaks in this entry.

6 Fit of model and data [i](#)

6.1 Protein, DNA and RNA chains [i](#)

In the following table, the column labelled ‘#RSRZ> 2’ contains the number (and percentage) of RSRZ outliers, followed by percent RSRZ outliers for the chain as percentile scores relative to all X-ray entries and entries of similar resolution. The OWAB column contains the minimum, median, 95th percentile and maximum values of the occupancy-weighted average B-factor per residue. The column labelled ‘Q< 0.9’ lists the number of (and percentage) of residues with an average occupancy less than 0.9.

Mol	Chain	Analysed	<RSRZ>	#RSRZ>2	OWAB(Å ²)	Q<0.9
1	A	374/378 (98%)	0.04	4 (1%) 80 82	19, 30, 45, 59	0
2	G	0/7	-	-	-	-
All	All	374/385 (97%)	0.04	4 (1%) 80 82	19, 30, 45, 59	0

All (4) RSRZ outliers are listed below:

Mol	Chain	Res	Type	RSRZ
1	A	2	ILE	3.4
1	A	341	TYR	3.3
1	A	3	GLU	3.2
1	A	372	ALA	2.0

6.2 Non-standard residues in protein, DNA, RNA chains [i](#)

In the following table, the Atoms column lists the number of modelled atoms in the group and the number defined in the chemical component dictionary. The B-factors column lists the minimum, median, 95th percentile and maximum values of B factors of atoms in the group. The column labelled ‘Q< 0.9’ lists the number of atoms with occupancy less than 0.9.

Mol	Type	Chain	Res	Atoms	RSCC	RSR	B-factors(Å ²)	Q<0.9
1	CCS	A	374	10/11	0.73	0.18	46,49,52,54	0
2	3MY	G	2	13/14	0.87	0.15	26,28,33,44	0
2	GHP	G	1	11/12	0.92	0.13	29,31,32,35	0
2	3FG	G	7	13/13	0.93	0.12	38,41,47,47	0
2	GHP	G	5	11/12	0.94	0.09	30,36,39,40	0
1	DAL	A	376	5/6	0.94	0.15	29,30,33,33	0
1	DAL	A	377	6/6	0.95	0.14	24,27,28,29	0
2	3FG	G	3	12/13	0.95	0.11	28,32,34,41	0
2	OMX	G	6	13/14	0.96	0.11	28,34,39,41	0
2	GHP	G	4	11/12	0.96	0.14	25,26,28,28	0

6.3 Carbohydrates [i](#)

There are no monosaccharides in this entry.

6.4 Ligands [i](#)

In the following table, the Atoms column lists the number of modelled atoms in the group and the number defined in the chemical component dictionary. The B-factors column lists the minimum, median, 95th percentile and maximum values of B factors of atoms in the group. The column labelled 'Q< 0.9' lists the number of atoms with occupancy less than 0.9.

Mol	Type	Chain	Res	Atoms	RSCC	RSR	B-factors(Å ²)	Q<0.9
7	T55	G	9	11/12	0.88	0.21	28,30,36,38	0
4	ACT	A	409	4/4	0.90	0.34	37,45,45,51	0
9	MAN	G	11	11/12	0.91	0.14	38,41,46,50	0
8	NAG	G	10	14/15	0.92	0.13	30,37,46,49	0
3	ZN	A	404	1/1	0.94	0.04	75,75,75,75	0
4	ACT	A	410	4/4	0.96	0.16	24,26,29,29	0
5	CAC	A	411	5/5	0.96	0.18	40,41,48,53	0
6	GCS	G	8	11/12	0.96	0.14	24,25,29,32	0
3	ZN	A	405	1/1	0.98	0.11	35,35,35,35	0
3	ZN	A	408	1/1	0.98	0.04	74,74,74,74	1
3	ZN	A	402	1/1	0.98	0.07	42,42,42,42	0
3	ZN	A	406	1/1	0.99	0.10	42,42,42,42	0
3	ZN	A	407	1/1	0.99	0.10	38,38,38,38	1
3	ZN	A	403	1/1	0.99	0.05	42,42,42,42	1
5	CAC	G	104	5/5	0.99	0.09	26,30,33,39	0
3	ZN	A	401	1/1	1.00	0.06	29,29,29,29	0

6.5 Other polymers [i](#)

There are no such residues in this entry.