



# Full wwPDB X-ray Structure Validation Report ⓘ

Jun 12, 2024 – 07:36 PM EDT

PDB ID : 3ZC3  
Title : FERREDOXIN-NADP REDUCTASE (MUTATION S80A) COMPLEXED WITH NADP BY COCRYSTALLIZATION  
Authors : Martinez-Julvez, M.; Hurtado-Guerrero, R.; Herguedas, B.; Sanchez-Azqueta, A.; Hervas, M.; Navarro, J.A.; Medina, M.  
Deposited on : 2012-11-15  
Resolution : 2.30 Å(reported)

This is a Full wwPDB X-ray Structure Validation Report for a publicly released PDB entry.

We welcome your comments at [validation@mail.wwpdb.org](mailto:validation@mail.wwpdb.org)

A user guide is available at

<https://www.wwpdb.org/validation/2017/XrayValidationReportHelp>

with specific help available everywhere you see the ⓘ symbol.

The types of validation reports are described at

<http://www.wwpdb.org/validation/2017/FAQs#types>.

---

The following versions of software and data (see [references ⓘ](#)) were used in the production of this report:

MolProbity : 4.02b-467  
Mogul : 2022.3.0, CSD as543be (2022)  
Xtriage (Phenix) : 1.20.1  
EDS : 2.36.2  
buster-report : 1.1.7 (2018)  
Percentile statistics : 20191225.v01 (using entries in the PDB archive December 25th 2019)  
Refmac : 5.8.0158  
CCP4 : 7.0.044 (Gargrove)  
Ideal geometry (proteins) : Engh & Huber (2001)  
Ideal geometry (DNA, RNA) : Parkinson et al. (1996)  
Validation Pipeline (wwPDB-VP) : 2.36.2

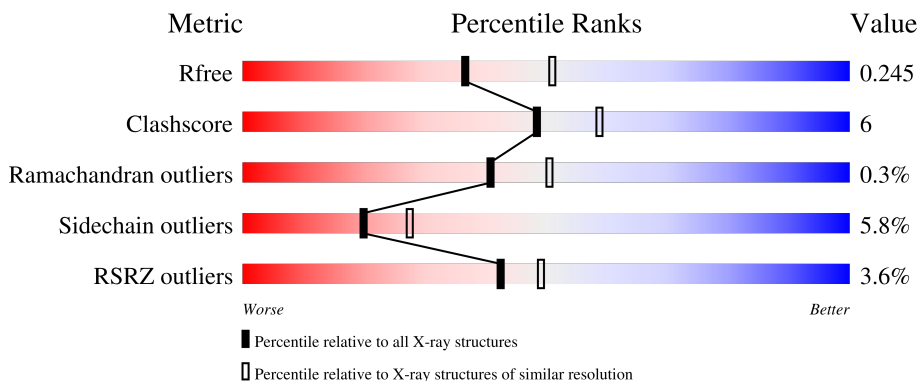
# 1 Overall quality at a glance

The following experimental techniques were used to determine the structure:

*X-RAY DIFFRACTION*

The reported resolution of this entry is 2.30 Å.

Percentile scores (ranging between 0-100) for global validation metrics of the entry are shown in the following graphic. The table shows the number of entries on which the scores are based.



Metric	Whole archive (#Entries)	Similar resolution (#Entries, resolution range(Å))
$R_{free}$	130704	5042 (2.30-2.30)
Clashscore	141614	5643 (2.30-2.30)
Ramachandran outliers	138981	5575 (2.30-2.30)
Sidechain outliers	138945	5575 (2.30-2.30)
RSRZ outliers	127900	4938 (2.30-2.30)

The table below summarises the geometric issues observed across the polymeric chains and their fit to the electron density. The red, orange, yellow and green segments of the lower bar indicate the fraction of residues that contain outliers for  $\geq 3$ , 2, 1 and 0 types of geometric quality criteria respectively. A grey segment represents the fraction of residues that are not modelled. The numeric value for each fraction is indicated below the corresponding segment, with a dot representing fractions  $\leq 5\%$ . The upper red bar (where present) indicates the fraction of residues that have poor fit to the electron density. The numeric value is given above the bar.

Mol	Chain	Length	Quality of chain
1	A	303	
1	B	303	

## 2 Entry composition i

There are 5 unique types of molecules in this entry. The entry contains 5053 atoms, of which 0 are hydrogens and 0 are deuteriums.

In the tables below, the ZeroOcc column contains the number of atoms modelled with zero occupancy, the AltConf column contains the number of residues with at least one atom in alternate conformation and the Trace column contains the number of residues modelled with at most 2 atoms.

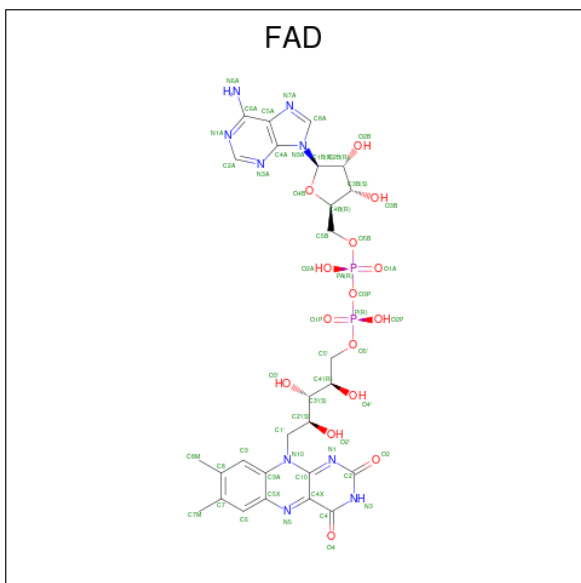
- Molecule 1 is a protein called FERREDOXIN-NADP REDUCTASE.

Mol	Chain	Residues	Atoms					ZeroOcc	AltConf	Trace
			Total	C	N	O	S			
1	A	295	2337	1488	397	443	9	0	0	0
1	B	295	2337	1488	397	443	9	0	0	0

There are 4 discrepancies between the modelled and reference sequences:

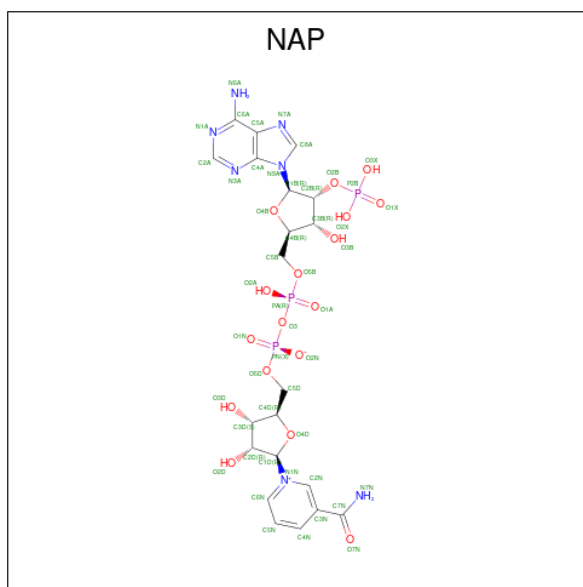
Chain	Residue	Modelled	Actual	Comment	Reference
A	80	ALA	SER	engineered mutation	UNP P21890
A	254	GLU	GLN	conflict	UNP P21890
B	80	ALA	SER	engineered mutation	UNP P21890
B	254	GLU	GLN	conflict	UNP P21890

- Molecule 2 is FLAVIN-ADENINE DINUCLEOTIDE (three-letter code: FAD) (formula:  $C_{27}H_{33}N_9O_{15}P_2$ ).



Mol	Chain	Residues	Atoms					ZeroOcc	AltConf
2	A	1	Total	C	N	O	P	0	0
			53	27	9	15	2		
2	B	1	Total	C	N	O	P	0	0
			53	27	9	15	2		

- Molecule 3 is NADP NICOTINAMIDE-ADENINE-DINUCLEOTIDE PHOSPHATE (three-letter code: NAP) (formula:  $C_{21}H_{28}N_7O_{17}P_3$ ).



Mol	Chain	Residues	Atoms					ZeroOcc	AltConf
3	A	1	Total	C	N	O	P	0	0
			48	21	7	17	3		
3	B	1	Total	C	N	O	P	0	0
			48	21	7	17	3		

- Molecule 4 is GLYCEROL (three-letter code: GOL) (formula:  $C_3H_8O_3$ ).



Mol	Chain	Residues	Atoms	ZeroOcc	AltConf
4	A	1	Total C O 6 3 3	0	0

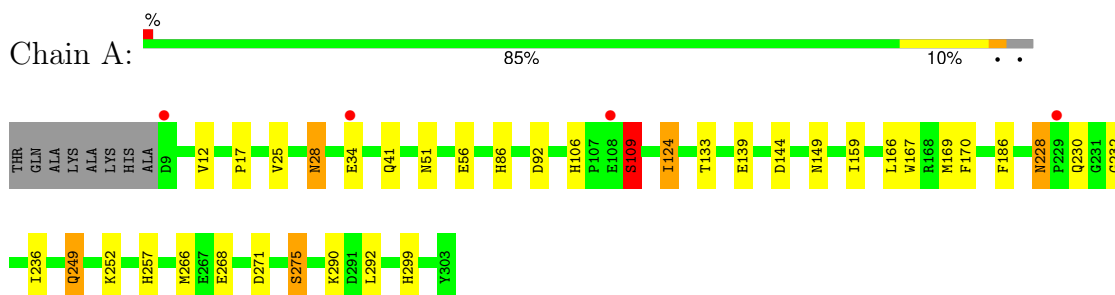
- Molecule 5 is water.

Mol	Chain	Residues	Atoms	ZeroOcc	AltConf
5	A	114	Total O 114 114	0	0
5	B	57	Total O 57 57	0	0

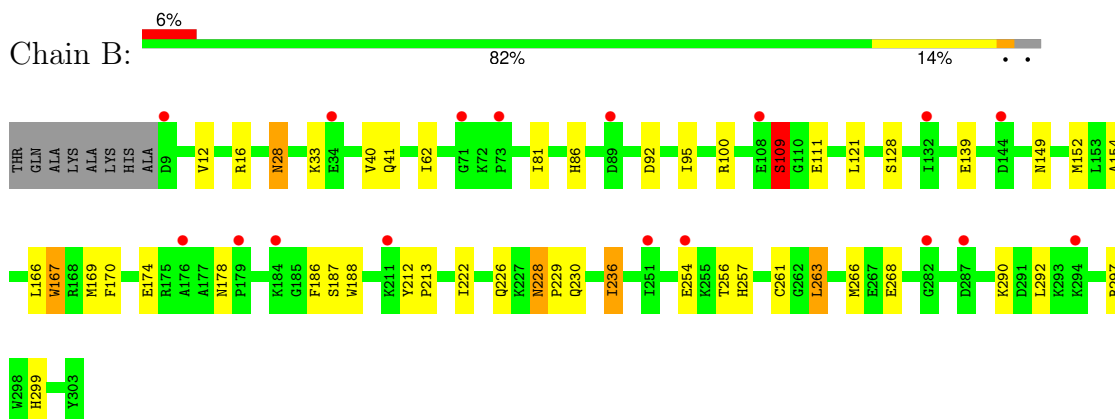
### 3 Residue-property plots [i](#)

These plots are drawn for all protein, RNA, DNA and oligosaccharide chains in the entry. The first graphic for a chain summarises the proportions of the various outlier classes displayed in the second graphic. The second graphic shows the sequence view annotated by issues in geometry and electron density. Residues are color-coded according to the number of geometric quality criteria for which they contain at least one outlier: green = 0, yellow = 1, orange = 2 and red = 3 or more. A red dot above a residue indicates a poor fit to the electron density ( $RSRZ > 2$ ). Stretches of 2 or more consecutive residues without any outlier are shown as a green connector. Residues present in the sample, but not in the model, are shown in grey.

- Molecule 1: FERREDOXIN-NADP REDUCTASE



- Molecule 1: FERREDOXIN-NADP REDUCTASE



## 4 Data and refinement statistics i

Property	Value	Source
Space group	I 4	Depositor
Cell constants a, b, c, $\alpha$ , $\beta$ , $\gamma$	222.54Å 222.54Å 37.33Å 90.00° 90.00° 90.00°	Depositor
Resolution (Å)	157.36 – 2.30 19.94 – 2.30	Depositor EDS
% Data completeness (in resolution range)	98.6 (157.36-2.30) 98.8 (19.94-2.30)	Depositor EDS
$R_{merge}$	0.10	Depositor
$R_{sym}$	(Not available)	Depositor
$\langle I/\sigma(I) \rangle$ <sup>1</sup>	2.57 (at 2.30Å)	Xtrriage
Refinement program	REFMAC 5.6.0117	Depositor
R, $R_{free}$	0.199 , 0.246 0.198 , 0.245	Depositor DCC
$R_{free}$ test set	2062 reflections (5.01%)	wwPDB-VP
Wilson B-factor (Å <sup>2</sup> )	30.8	Xtrriage
Anisotropy	0.901	Xtrriage
Bulk solvent $k_{sol}$ (e/Å <sup>3</sup> ), $B_{sol}$ (Å <sup>2</sup> )	0.34 , 32.1	EDS
L-test for twinning <sup>2</sup>	$\langle  L  \rangle = 0.47$ , $\langle L^2 \rangle = 0.31$	Xtrriage
Estimated twinning fraction	0.018 for -k,-h,-l	Xtrriage
$F_o, F_c$ correlation	0.94	EDS
Total number of atoms	5053	wwPDB-VP
Average B, all atoms (Å <sup>2</sup> )	36.0	wwPDB-VP

Xtrriage's analysis on translational NCS is as follows: *The largest off-origin peak in the Patterson function is 3.54% of the height of the origin peak. No significant pseudotranslation is detected.*

<sup>1</sup>Intensities estimated from amplitudes.

<sup>2</sup>Theoretical values of  $\langle |L| \rangle$ ,  $\langle L^2 \rangle$  for acentric reflections are 0.5, 0.333 respectively for untwinned datasets, and 0.375, 0.2 for perfectly twinned datasets.

## 5 Model quality [i](#)

### 5.1 Standard geometry [i](#)

Bond lengths and bond angles in the following residue types are not validated in this section: FAD, NAP, GOL

The Z score for a bond length (or angle) is the number of standard deviations the observed value is removed from the expected value. A bond length (or angle) with  $|Z| > 5$  is considered an outlier worth inspection. RMSZ is the root-mean-square of all Z scores of the bond lengths (or angles).

Mol	Chain	Bond lengths		Bond angles	
		RMSZ	# Z  >5	RMSZ	# Z  >5
1	A	0.61	0/2393	0.67	0/3242
1	B	0.57	2/2393 (0.1%)	0.65	1/3242 (0.0%)
All	All	0.59	2/4786 (0.0%)	0.66	1/6484 (0.0%)

All (2) bond length outliers are listed below:

Mol	Chain	Res	Type	Atoms	Z	Observed(Å)	Ideal(Å)
1	B	167	TRP	CD2-CE2	5.35	1.47	1.41
1	B	188	TRP	CD2-CE2	5.08	1.47	1.41

All (1) bond angle outliers are listed below:

Mol	Chain	Res	Type	Atoms	Z	Observed(°)	Ideal(°)
1	B	263	LEU	CA-CB-CG	5.11	127.06	115.30

There are no chirality outliers.

There are no planarity outliers.

### 5.2 Too-close contacts [i](#)

In the following table, the Non-H and H(model) columns list the number of non-hydrogen atoms and hydrogen atoms in the chain respectively. The H(added) column lists the number of hydrogen atoms added and optimized by MolProbity. The Clashes column lists the number of clashes within the asymmetric unit, whereas Symm-Clashes lists symmetry-related clashes.

Mol	Chain	Non-H	H(model)	H(added)	Clashes	Symm-Clashes
1	A	2337	0	2310	28	0
1	B	2337	0	2310	29	0
2	A	53	0	31	0	0

*Continued on next page...*



*Continued from previous page...*

Mol	Chain	Non-H	H(model)	H(added)	Clashes	Symm-Clashes
2	B	53	0	31	0	0
3	A	48	0	25	0	0
3	B	48	0	25	1	0
4	A	6	0	8	1	0
5	A	114	0	0	0	0
5	B	57	0	0	0	0
All	All	5053	0	4740	58	0

The all-atom clashscore is defined as the number of clashes found per 1000 atoms (including hydrogen atoms). The all-atom clashscore for this structure is 6.

All (58) close contacts within the same asymmetric unit are listed below, sorted by their clash magnitude.

Atom-1	Atom-2	Interatomic distance (Å)	Clash overlap (Å)
1:B:109:SER:HB3	1:B:111:GLU:OE1	1.58	1.03
1:A:257:HIS:HD2	1:A:299:HIS:HE1	1.12	0.94
1:B:257:HIS:HD2	1:B:299:HIS:HE1	1.00	0.92
1:A:249:GLN:HE22	1:A:252:LYS:HZ1	1.19	0.90
1:A:249:GLN:HE22	1:A:252:LYS:NZ	1.71	0.88
1:B:257:HIS:CD2	1:B:299:HIS:HE1	1.93	0.85
1:B:257:HIS:HD2	1:B:299:HIS:CE1	1.93	0.81
1:B:169:MET:HE2	1:B:170:PHE:CE2	2.19	0.76
1:A:51:ASN:HA	4:A:1305:GOL:H12	1.66	0.75
1:A:257:HIS:CD2	1:A:299:HIS:HE1	2.02	0.70
1:B:149:ASN:HD22	1:B:186:PHE:H	1.38	0.70
1:B:28:ASN:ND2	1:B:41:GLN:HE21	1.92	0.67
1:A:149:ASN:HD22	1:A:186:PHE:H	1.42	0.65
1:A:257:HIS:HD2	1:A:299:HIS:CE1	2.04	0.65
1:A:228:ASN:C	1:A:228:ASN:HD22	2.01	0.65
1:B:228:ASN:C	1:B:228:ASN:HD22	2.04	0.61
1:A:249:GLN:NE2	1:A:252:LYS:NZ	2.45	0.60
1:A:249:GLN:NE2	1:A:252:LYS:HZ1	1.95	0.60
1:B:257:HIS:CD2	1:B:297:ARG:HA	2.37	0.60
1:A:236:ILE:HG21	1:A:266:MET:CE	2.34	0.57
1:A:28:ASN:ND2	1:A:41:GLN:HE21	2.04	0.56
1:A:166:LEU:HD23	1:A:169:MET:HE1	1.86	0.56
1:A:169:MET:HE2	1:A:170:PHE:CE2	2.40	0.55
1:B:28:ASN:HD21	1:B:41:GLN:HB3	1.72	0.54
1:B:236:ILE:HG21	1:B:266:MET:CE	2.37	0.54
1:B:40:VAL:HG22	1:B:100:ARG:HB2	1.90	0.53
1:B:28:ASN:ND2	1:B:41:GLN:HB3	2.25	0.52

*Continued on next page...*

Continued from previous page...

Atom-1	Atom-2	Interatomic distance (Å)	Clash overlap (Å)
1:B:222:ILE:H	1:B:226:GLN:NE2	2.10	0.50
1:B:236:ILE:HG21	1:B:266:MET:HE2	1.94	0.50
1:A:106:HIS:CD2	1:A:109:SER:HB3	2.47	0.49
1:B:152:MET:HE3	1:B:166:LEU:HD11	1.94	0.49
1:A:25:VAL:HG21	1:A:124:ILE:HG12	1.95	0.48
1:A:271:ASP:O	1:A:275:SER:HB2	2.13	0.48
1:B:174:GLU:O	1:B:178:ASN:ND2	2.47	0.47
1:A:169:MET:CE	1:A:170:PHE:CE2	2.97	0.47
1:A:139:GLU:O	1:A:299:HIS:HD2	1.97	0.47
1:B:62:ILE:HG21	1:B:121:LEU:HD21	1.97	0.47
1:A:28:ASN:HD21	1:A:41:GLN:HB3	1.81	0.46
1:A:228:ASN:HD21	1:A:232:GLY:H	1.63	0.46
1:B:28:ASN:HD21	1:B:41:GLN:HE21	1.60	0.46
1:A:236:ILE:HG21	1:A:266:MET:HE2	1.97	0.46
1:A:17:PRO:HA	1:A:133:THR:HG21	1.98	0.45
1:A:28:ASN:HD21	1:A:41:GLN:HE21	1.65	0.45
1:B:149:ASN:HB2	1:B:256:THR:OG1	2.17	0.44
1:B:28:ASN:C	1:B:28:ASN:HD22	2.19	0.44
1:B:254:GLU:HA	1:B:297:ARG:NH2	2.32	0.44
1:B:81:ILE:HG12	1:B:95:ILE:HD11	1.99	0.44
1:A:86:HIS:HA	1:A:92:ASP:OD1	2.17	0.44
1:B:86:HIS:HA	1:B:92:ASP:OD1	2.18	0.44
1:A:56:GLU:H	1:A:56:GLU:CD	2.22	0.43
3:B:1304:NAP:O5D	3:B:1304:NAP:H2N	2.20	0.42
1:B:212:TYR:N	1:B:213:PRO:HD3	2.35	0.41
1:B:154:ALA:HA	1:B:261:CYS:O	2.20	0.41
1:A:28:ASN:ND2	1:A:41:GLN:HB3	2.35	0.41
1:A:159:ILE:O	1:A:159:ILE:HG13	2.20	0.41
1:B:139:GLU:O	1:B:299:HIS:HD2	2.04	0.40
1:B:236:ILE:HG21	1:B:266:MET:HE3	2.02	0.40
1:B:228:ASN:HB2	1:B:229:PRO:HD2	2.04	0.40

There are no symmetry-related clashes.

## 5.3 Torsion angles

### 5.3.1 Protein backbone

In the following table, the Percentiles column shows the percent Ramachandran outliers of the chain as a percentile score with respect to all X-ray entries followed by that with respect to entries of similar resolution.

The Analysed column shows the number of residues for which the backbone conformation was analysed, and the total number of residues.

Mol	Chain	Analysed	Favoured	Allowed	Outliers	Percentiles	
1	A	293/303 (97%)	284 (97%)	8 (3%)	1 (0%)	41	50
1	B	293/303 (97%)	284 (97%)	8 (3%)	1 (0%)	41	50
All	All	586/606 (97%)	568 (97%)	16 (3%)	2 (0%)	41	50

All (2) Ramachandran outliers are listed below:

Mol	Chain	Res	Type
1	A	109	SER
1	B	109	SER

### 5.3.2 Protein sidechains [i](#)

In the following table, the Percentiles column shows the percent sidechain outliers of the chain as a percentile score with respect to all X-ray entries followed by that with respect to entries of similar resolution.

The Analysed column shows the number of residues for which the sidechain conformation was analysed, and the total number of residues.

Mol	Chain	Analysed	Rotameric	Outliers	Percentiles	
1	A	249/254 (98%)	235 (94%)	14 (6%)	21	29
1	B	249/254 (98%)	234 (94%)	15 (6%)	19	26
All	All	498/508 (98%)	469 (94%)	29 (6%)	20	27

All (29) residues with a non-rotameric sidechain are listed below:

Mol	Chain	Res	Type
1	A	12	VAL
1	A	28	ASN
1	A	34	GLU
1	A	109	SER
1	A	124	ILE
1	A	144	ASP
1	A	167	TRP
1	A	228	ASN
1	A	230	GLN
1	A	249	GLN
1	A	268	GLU

*Continued on next page...*

*Continued from previous page...*

<b>Mol</b>	<b>Chain</b>	<b>Res</b>	<b>Type</b>
1	A	275	SER
1	A	290	LYS
1	A	292	LEU
1	B	12	VAL
1	B	16	ARG
1	B	28	ASN
1	B	33	LYS
1	B	109	SER
1	B	128	SER
1	B	167	TRP
1	B	187	SER
1	B	228	ASN
1	B	230	GLN
1	B	236	ILE
1	B	263	LEU
1	B	268	GLU
1	B	290	LYS
1	B	292	LEU

Sometimes sidechains can be flipped to improve hydrogen bonding and reduce clashes. All (22) such sidechains are listed below:

<b>Mol</b>	<b>Chain</b>	<b>Res</b>	<b>Type</b>
1	A	28	ASN
1	A	101	GLN
1	A	106	HIS
1	A	149	ASN
1	A	182	GLN
1	A	226	GLN
1	A	228	ASN
1	A	249	GLN
1	A	257	HIS
1	A	299	HIS
1	B	28	ASN
1	B	70	ASN
1	B	101	GLN
1	B	106	HIS
1	B	149	ASN
1	B	182	GLN
1	B	226	GLN
1	B	228	ASN
1	B	230	GLN
1	B	249	GLN

*Continued on next page...*

Continued from previous page...

Mol	Chain	Res	Type
1	B	257	HIS
1	B	299	HIS

### 5.3.3 RNA [i](#)

There are no RNA molecules in this entry.

### 5.4 Non-standard residues in protein, DNA, RNA chains [i](#)

There are no non-standard protein/DNA/RNA residues in this entry.

### 5.5 Carbohydrates [i](#)

There are no monosaccharides in this entry.

### 5.6 Ligand geometry [i](#)

5 ligands are modelled in this entry.

In the following table, the Counts columns list the number of bonds (or angles) for which Mogul statistics could be retrieved, the number of bonds (or angles) that are observed in the model and the number of bonds (or angles) that are defined in the Chemical Component Dictionary. The Link column lists molecule types, if any, to which the group is linked. The Z score for a bond length (or angle) is the number of standard deviations the observed value is removed from the expected value. A bond length (or angle) with  $|Z| > 2$  is considered an outlier worth inspection. RMSZ is the root-mean-square of all Z scores of the bond lengths (or angles).

Mol	Type	Chain	Res	Link	Bond lengths			Bond angles		
					Counts	RMSZ	# Z  > 2	Counts	RMSZ	# Z  > 2
4	GOL	A	1305	-	5,5,5	0.22	0	5,5,5	0.56	0
3	NAP	A	1304	-	46,52,52	2.33	11 (23%)	61,80,80	2.20	14 (22%)
3	NAP	B	1304	-	46,52,52	2.53	8 (17%)	61,80,80	2.36	15 (24%)
2	FAD	B	304	-	54,58,58	1.90	12 (22%)	71,89,89	1.67	12 (16%)
2	FAD	A	304	-	54,58,58	1.67	9 (16%)	71,89,89	1.79	11 (15%)

In the following table, the Chirals column lists the number of chiral outliers, the number of chiral centers analysed, the number of these observed in the model and the number defined in the Chemical Component Dictionary. Similar counts are reported in the Torsion and Rings columns. '·' means no outliers of that kind were identified.

Mol	Type	Chain	Res	Link	Chirals	Torsions	Rings
4	GOL	A	1305	-	-	4/4/4/4	-
3	NAP	A	1304	-	-	3/31/67/67	0/5/5/5
3	NAP	B	1304	-	-	2/31/67/67	0/5/5/5
2	FAD	B	304	-	-	1/30/50/50	0/6/6/6
2	FAD	A	304	-	-	2/30/50/50	0/6/6/6

All (40) bond length outliers are listed below:

Mol	Chain	Res	Type	Atoms	Z	Observed(Å)	Ideal(Å)
3	B	1304	NAP	PA-O3	9.75	1.70	1.59
3	A	1304	NAP	PA-O3	8.00	1.68	1.59
3	A	1304	NAP	PN-O3	7.07	1.67	1.59
3	B	1304	NAP	O7N-C7N	6.76	1.36	1.24
3	A	1304	NAP	O7N-C7N	6.48	1.36	1.24
3	B	1304	NAP	PN-O3	6.33	1.66	1.59
3	B	1304	NAP	O4D-C1D	5.45	1.48	1.40
3	B	1304	NAP	C2N-N1N	5.42	1.40	1.35
2	A	304	FAD	C2A-N1A	5.39	1.43	1.33
2	B	304	FAD	C2A-N3A	5.18	1.40	1.32
2	A	304	FAD	C2A-N3A	4.81	1.39	1.32
3	A	1304	NAP	C2N-N1N	4.72	1.40	1.35
2	B	304	FAD	C7M-C7	-4.52	1.42	1.51
2	B	304	FAD	C10-N1	4.41	1.42	1.33
2	B	304	FAD	C8M-C8	-4.18	1.43	1.51
2	B	304	FAD	C2A-N1A	4.06	1.41	1.33
2	A	304	FAD	C7M-C7	-3.97	1.43	1.51
2	A	304	FAD	C4X-N5	3.92	1.39	1.30
2	B	304	FAD	C4X-N5	3.84	1.39	1.30
2	B	304	FAD	P-O3P	3.80	1.63	1.59
2	A	304	FAD	C8M-C8	-3.62	1.44	1.51
3	B	1304	NAP	P2B-O1X	3.58	1.61	1.50
3	B	1304	NAP	P2B-O2B	3.45	1.65	1.59
3	A	1304	NAP	C6N-N1N	3.14	1.42	1.35
3	A	1304	NAP	P2B-O1X	3.09	1.60	1.50
2	B	304	FAD	O4B-C1B	2.92	1.44	1.40
3	A	1304	NAP	O4D-C1D	2.57	1.44	1.40
3	B	1304	NAP	C6N-N1N	2.43	1.40	1.35
2	B	304	FAD	C2-N1	2.40	1.42	1.36
2	A	304	FAD	C9A-N10	-2.39	1.37	1.41
2	A	304	FAD	C10-N1	2.35	1.38	1.33
2	A	304	FAD	C6A-C5A	-2.30	1.34	1.43
2	A	304	FAD	O4B-C1B	2.23	1.43	1.40

*Continued on next page...*

*Continued from previous page...*

Mol	Chain	Res	Type	Atoms	Z	Observed(Å)	Ideal(Å)
3	A	1304	NAP	P2B-O2X	2.22	1.63	1.54
2	B	304	FAD	C1'-C2'	2.19	1.55	1.52
2	B	304	FAD	C6A-C5A	-2.17	1.35	1.43
3	A	1304	NAP	P2B-O3X	-2.14	1.46	1.54
3	A	1304	NAP	C3N-C7N	2.10	1.53	1.50
2	B	304	FAD	C5'-C4'	2.05	1.54	1.51
3	A	1304	NAP	P2B-O2B	2.05	1.63	1.59

All (52) bond angle outliers are listed below:

Mol	Chain	Res	Type	Atoms	Z	Observed(°)	Ideal(°)
2	A	304	FAD	N3A-C2A-N1A	-8.78	116.75	128.67
2	B	304	FAD	N3A-C2A-N1A	-8.27	117.44	128.67
3	B	1304	NAP	O4B-C1B-N9A	7.48	118.67	108.75
3	B	1304	NAP	O3-PN-O1N	-7.20	89.05	110.70
3	B	1304	NAP	O5B-PA-O1A	-7.11	80.77	108.94
3	A	1304	NAP	O3-PN-O1N	-6.61	90.82	110.70
3	A	1304	NAP	O2N-PN-O3	-6.51	89.68	107.27
3	B	1304	NAP	O2N-PN-O3	-6.20	90.51	107.27
3	A	1304	NAP	O5B-PA-O1A	-6.19	84.42	108.94
3	A	1304	NAP	N3A-C2A-N1A	-5.45	121.27	128.67
3	B	1304	NAP	N3A-C2A-N1A	-5.31	121.47	128.67
2	A	304	FAD	C1B-N9A-C4A	-5.14	117.61	126.64
3	A	1304	NAP	C4B-O4B-C1B	-4.54	105.77	109.92
3	A	1304	NAP	O3-PA-O1A	4.34	123.76	110.70
3	A	1304	NAP	O2A-PA-O5B	-4.04	89.24	107.57
2	A	304	FAD	C4-N3-C2	-3.81	118.87	125.64
2	B	304	FAD	C4-N3-C2	-3.49	119.45	125.64
3	A	1304	NAP	O4B-C1B-C2B	-3.46	100.71	106.61
2	A	304	FAD	C4X-C10-N10	3.36	121.30	116.48
3	B	1304	NAP	O2A-PA-O5B	-3.32	92.51	107.57
3	A	1304	NAP	O2N-PN-O5D	3.11	121.66	107.57
2	B	304	FAD	C4X-C10-N10	3.11	120.93	116.48
3	B	1304	NAP	C4B-O4B-C1B	-3.07	107.11	109.92
3	B	1304	NAP	O3-PA-O1A	3.06	119.92	110.70
3	B	1304	NAP	C5D-C4D-C3D	-3.05	104.24	115.21
2	A	304	FAD	C4X-C4-N3	3.00	120.89	113.25
2	B	304	FAD	C4X-C4-N3	2.99	120.86	113.25
3	B	1304	NAP	O2A-PA-O1A	2.79	125.42	112.44
2	A	304	FAD	C5A-C6A-N6A	-2.76	116.11	120.31
3	B	1304	NAP	C4D-O4D-C1D	-2.73	107.43	109.92
2	B	304	FAD	C4X-C10-N1	-2.71	117.95	124.59

*Continued on next page...*

Continued from previous page...

Mol	Chain	Res	Type	Atoms	Z	Observed(°)	Ideal(°)
3	B	1304	NAP	O2N-PN-O5D	2.70	119.79	107.57
2	A	304	FAD	C5X-C9A-N10	2.62	120.34	117.97
3	B	1304	NAP	O2A-PA-O3	2.53	114.10	107.27
3	A	1304	NAP	O2A-PA-O3	2.45	113.90	107.27
2	B	304	FAD	C4-C4X-C10	2.44	121.11	116.93
2	B	304	FAD	C10-C4X-N5	-2.43	119.84	124.81
2	B	304	FAD	C1B-N9A-C4A	-2.37	122.47	126.64
2	B	304	FAD	C4B-O4B-C1B	-2.33	107.79	109.92
2	B	304	FAD	C9A-C5X-N5	-2.31	120.00	122.45
3	A	1304	NAP	O2N-PN-O1N	2.31	123.20	112.44
2	A	304	FAD	C4X-C10-N1	-2.29	118.96	124.59
2	A	304	FAD	C1'-C2'-C3'	2.26	115.77	109.66
3	A	1304	NAP	O3X-P2B-O1X	2.24	119.58	110.83
2	A	304	FAD	C10-C4X-N5	-2.24	120.23	124.81
3	A	1304	NAP	O2X-P2B-O1X	-2.23	102.15	110.83
2	A	304	FAD	C4B-O4B-C1B	-2.22	107.89	109.92
3	B	1304	NAP	O5D-PN-O1N	2.22	117.72	108.94
2	B	304	FAD	O4'-C4'-C5'	-2.10	105.37	109.99
2	B	304	FAD	C5X-C9A-N10	2.08	119.85	117.97
3	B	1304	NAP	O2N-PN-O1N	2.08	122.11	112.44
3	A	1304	NAP	C6N-N1N-C2N	-2.01	120.17	121.88

There are no chirality outliers.

All (12) torsion outliers are listed below:

Mol	Chain	Res	Type	Atoms
3	A	1304	NAP	C5D-O5D-PN-O3
3	A	1304	NAP	C5D-O5D-PN-O2N
3	B	1304	NAP	C5D-O5D-PN-O3
4	A	1305	GOL	O1-C1-C2-C3
3	B	1304	NAP	O4D-C4D-C5D-O5D
4	A	1305	GOL	C1-C2-C3-O3
4	A	1305	GOL	O1-C1-C2-O2
4	A	1305	GOL	O2-C2-C3-O3
3	A	1304	NAP	C2B-O2B-P2B-O1X
2	A	304	FAD	PA-O3P-P-O1P
2	A	304	FAD	PA-O3P-P-O2P
2	B	304	FAD	PA-O3P-P-O2P

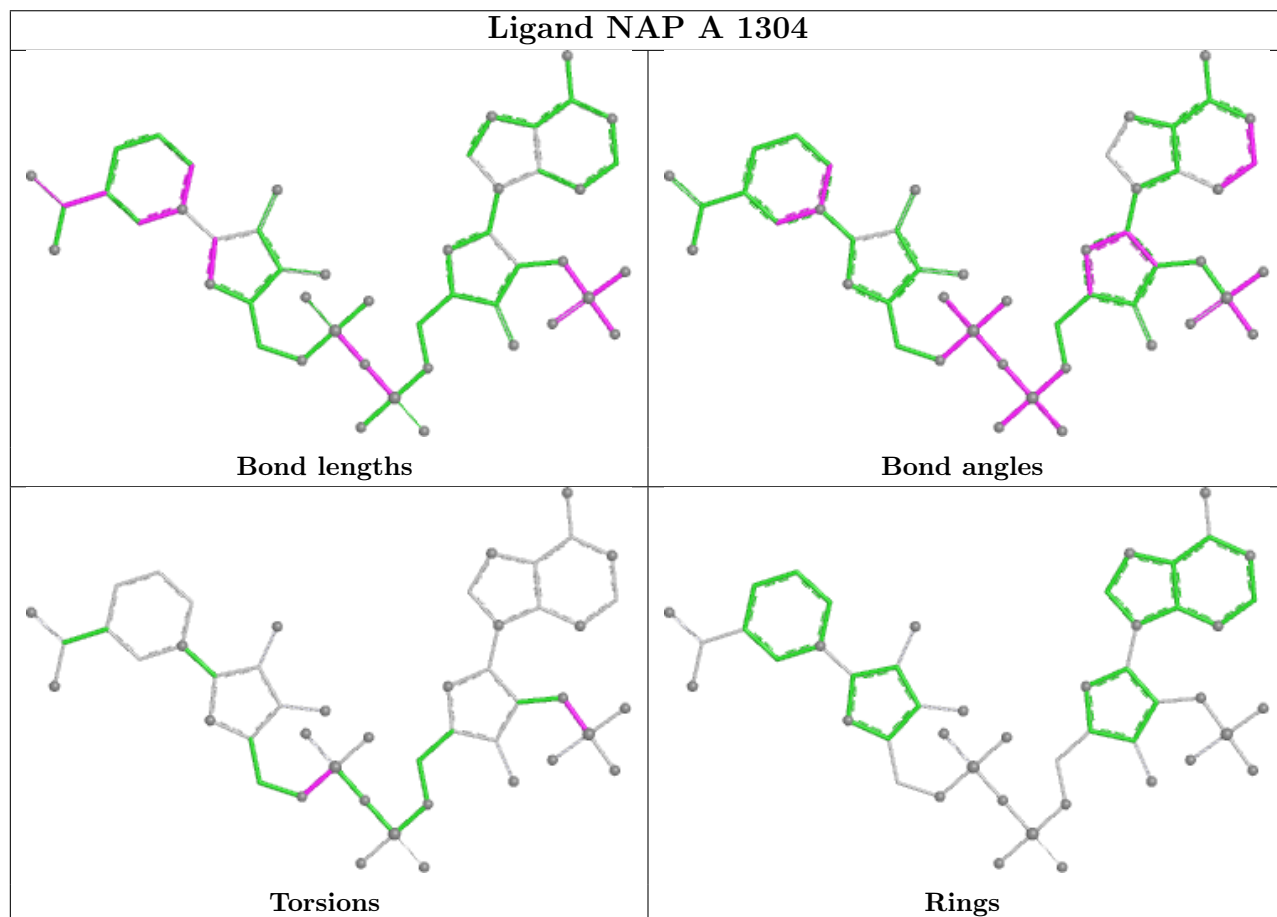
There are no ring outliers.

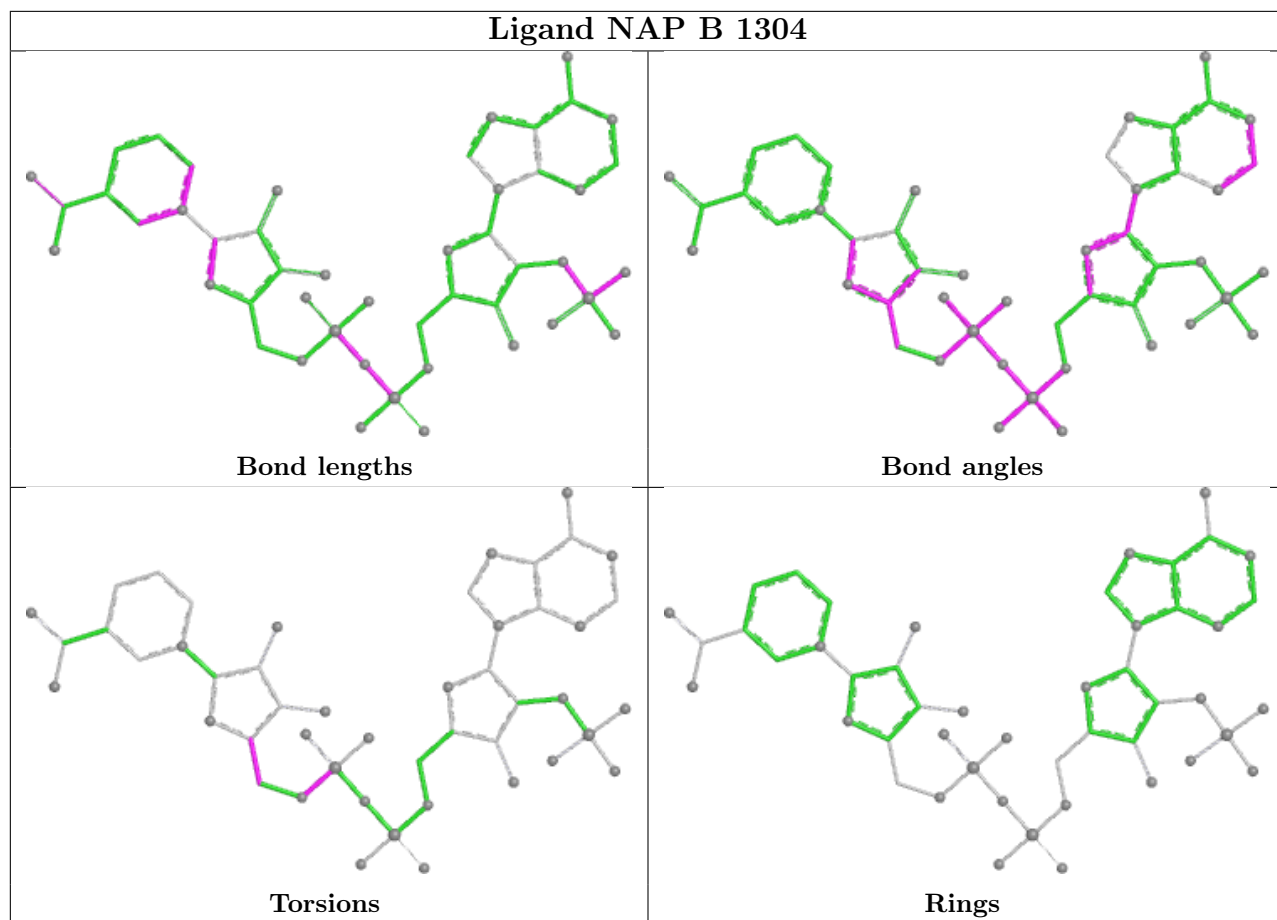
2 monomers are involved in 2 short contacts:

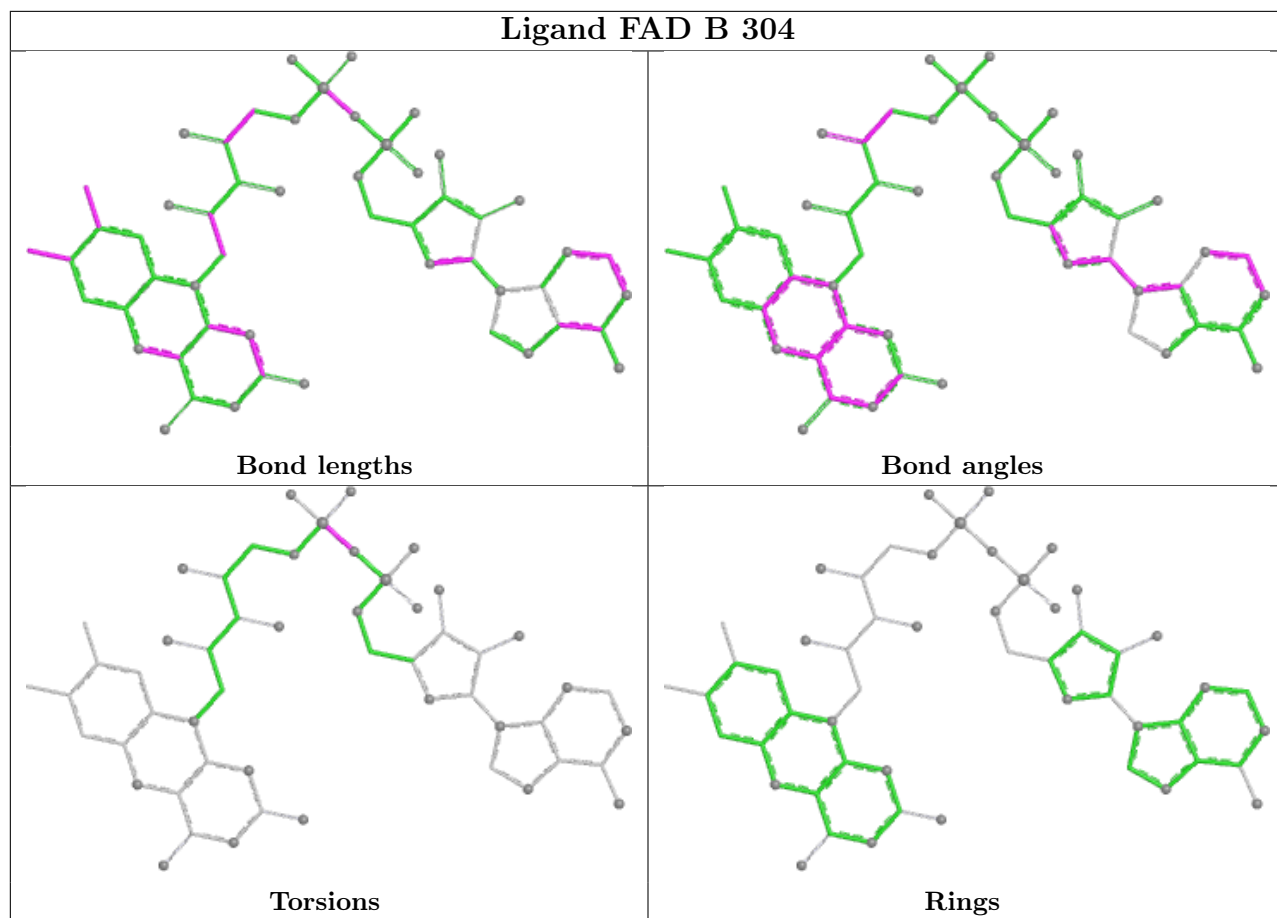


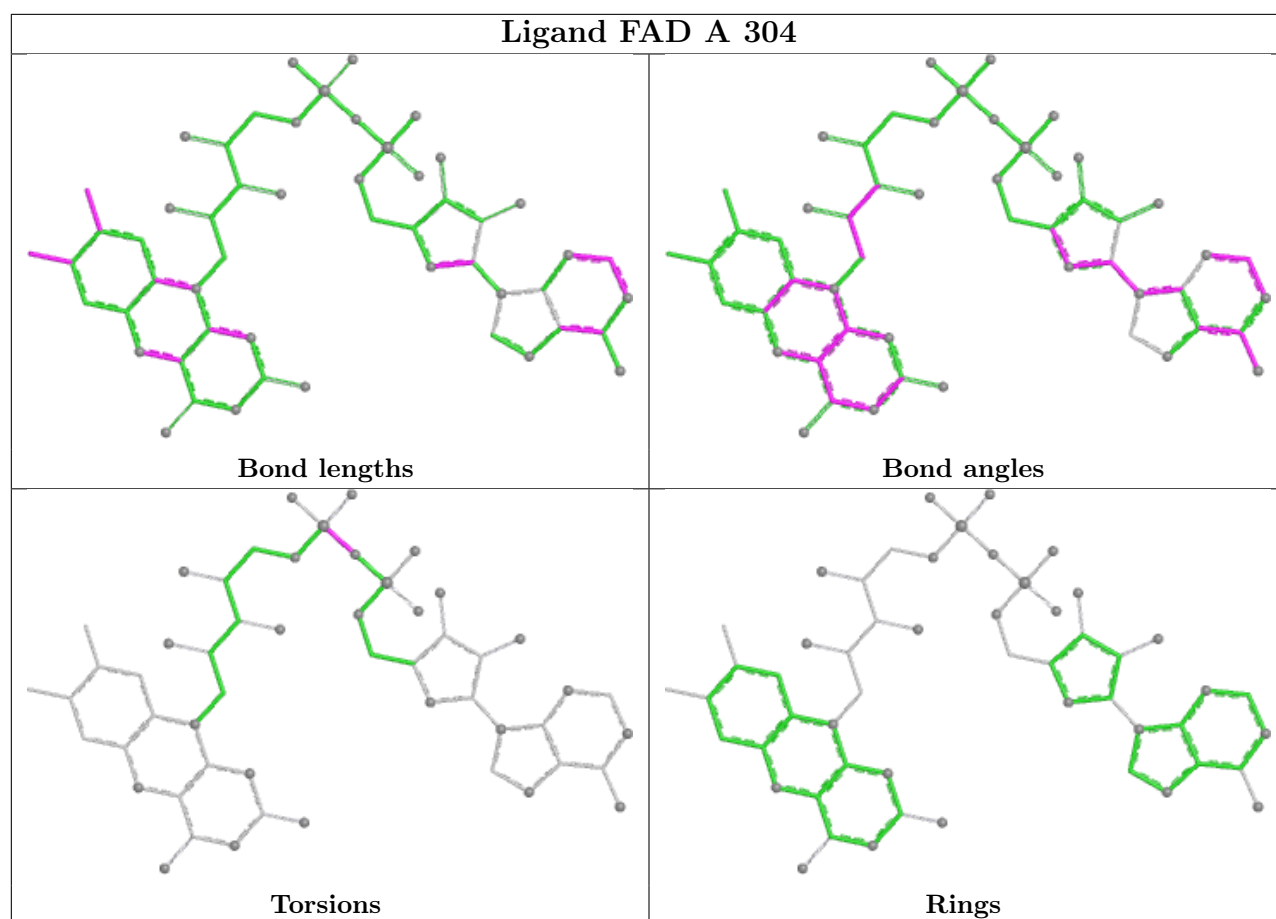
Mol	Chain	Res	Type	Clashes	Symm-Clashes
4	A	1305	GOL	1	0
3	B	1304	NAP	1	0

The following is a two-dimensional graphical depiction of Mogul quality analysis of bond lengths, bond angles, torsion angles, and ring geometry for all instances of the Ligand of Interest. In addition, ligands with molecular weight > 250 and outliers as shown on the validation Tables will also be included. For torsion angles, if less than 5% of the Mogul distribution of torsion angles is within 10 degrees of the torsion angle in question, then that torsion angle is considered an outlier. Any bond that is central to one or more torsion angles identified as an outlier by Mogul will be highlighted in the graph. For rings, the root-mean-square deviation (RMSD) between the ring in question and similar rings identified by Mogul is calculated over all ring torsion angles. If the average RMSD is greater than 60 degrees and the minimal RMSD between the ring in question and any Mogul-identified rings is also greater than 60 degrees, then that ring is considered an outlier. The outliers are highlighted in purple. The color gray indicates Mogul did not find sufficient equivalents in the CSD to analyse the geometry.









## 5.7 Other polymers [i](#)

There are no such residues in this entry.

## 5.8 Polymer linkage issues [i](#)

There are no chain breaks in this entry.

## 6 Fit of model and data [i](#)

### 6.1 Protein, DNA and RNA chains [i](#)

In the following table, the column labelled ‘#RSRZ > 2’ contains the number (and percentage) of RSRZ outliers, followed by percent RSRZ outliers for the chain as percentile scores relative to all X-ray entries and entries of similar resolution. The OWAB column contains the minimum, median, 95<sup>th</sup> percentile and maximum values of the occupancy-weighted average B-factor per residue. The column labelled ‘Q < 0.9’ lists the number of (and percentage) of residues with an average occupancy less than 0.9.

Mol	Chain	Analysed	<RSRZ>	#RSRZ>2	OWAB(Å <sup>2</sup> )	Q<0.9
1	A	295/303 (97%)	-0.11	4 (1%) 75 80	15, 30, 50, 77	0
1	B	295/303 (97%)	0.17	17 (5%) 23 29	20, 39, 67, 83	0
All	All	590/606 (97%)	0.03	21 (3%) 42 49	15, 34, 64, 83	0

All (21) RSRZ outliers are listed below:

Mol	Chain	Res	Type	RSRZ
1	A	9	ASP	5.0
1	A	108	GLU	3.4
1	B	251	ILE	3.0
1	B	9	ASP	3.0
1	B	108	GLU	2.8
1	B	179	PRO	2.8
1	B	282	GLY	2.6
1	B	294	LYS	2.6
1	B	287	ASP	2.4
1	B	254	GLU	2.4
1	B	144	ASP	2.4
1	B	211	LYS	2.4
1	A	34	GLU	2.4
1	B	71	GLY	2.2
1	B	89	ASP	2.2
1	B	132	ILE	2.2
1	B	176	ALA	2.1
1	A	229	PRO	2.1
1	B	73	PRO	2.1
1	B	184	LYS	2.1
1	B	34	GLU	2.0

## 6.2 Non-standard residues in protein, DNA, RNA chains [i](#)

There are no non-standard protein/DNA/RNA residues in this entry.

## 6.3 Carbohydrates [i](#)

There are no monosaccharides in this entry.

## 6.4 Ligands [i](#)

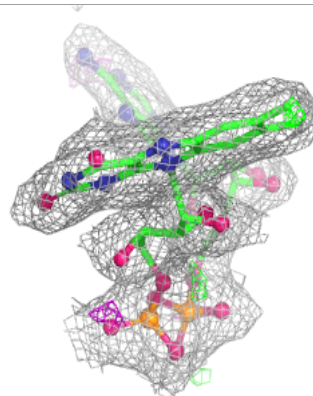
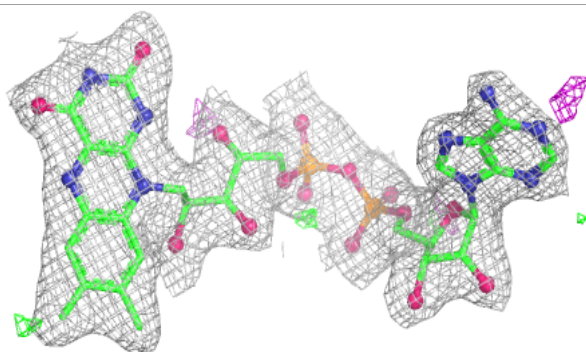
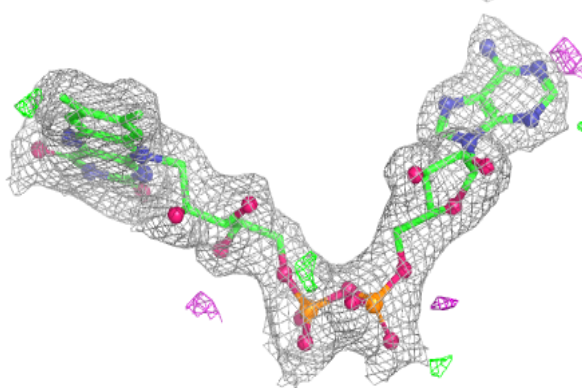
In the following table, the Atoms column lists the number of modelled atoms in the group and the number defined in the chemical component dictionary. The B-factors column lists the minimum, median, 95<sup>th</sup> percentile and maximum values of B factors of atoms in the group. The column labelled 'Q< 0.9' lists the number of atoms with occupancy less than 0.9.

Mol	Type	Chain	Res	Atoms	RSCC	RSR	B-factors( $\text{\AA}^2$ )	Q<0.9
4	GOL	A	1305	6/6	0.82	0.25	48,58,59,59	0
2	FAD	B	304	53/53	0.96	0.11	21,26,43,45	0
2	FAD	A	304	53/53	0.97	0.10	14,18,35,41	0
3	NAP	B	1304	48/48	0.98	0.11	18,23,33,36	0
3	NAP	A	1304	48/48	0.98	0.13	23,27,32,33	0

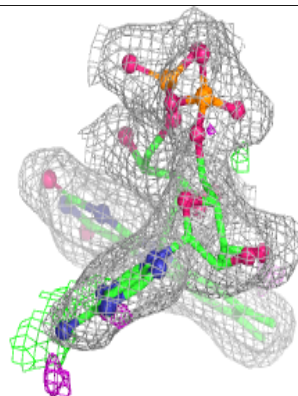
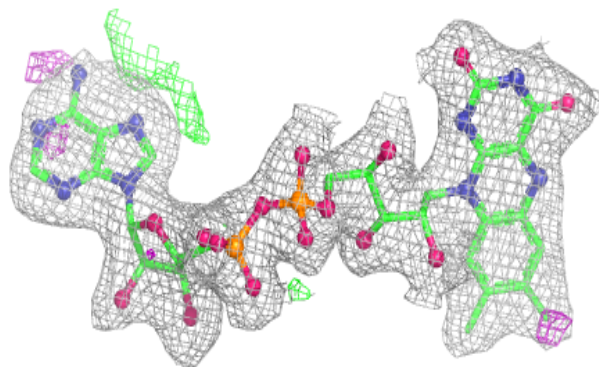
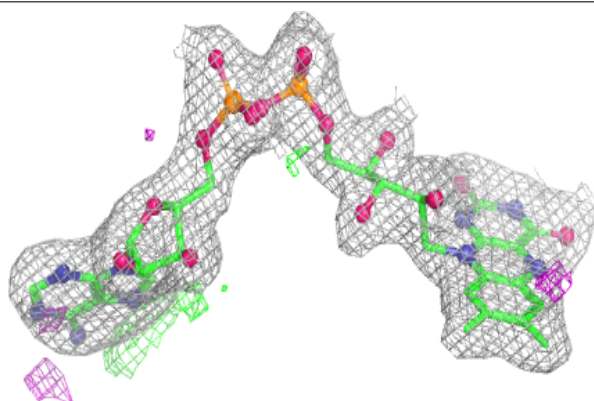
The following is a graphical depiction of the model fit to experimental electron density of all instances of the Ligand of Interest. In addition, ligands with molecular weight > 250 and outliers as shown on the geometry validation Tables will also be included. Each fit is shown from different orientation to approximate a three-dimensional view.

**Electron density around FAD B 304:**

$2mF_o-DF_c$  (at 0.7 rmsd) in gray  
 $mF_o-DF_c$  (at 3 rmsd) in purple (negative)  
and green (positive)

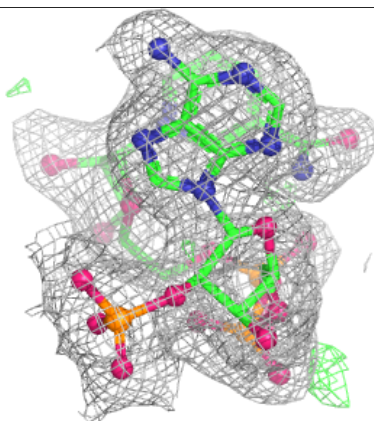
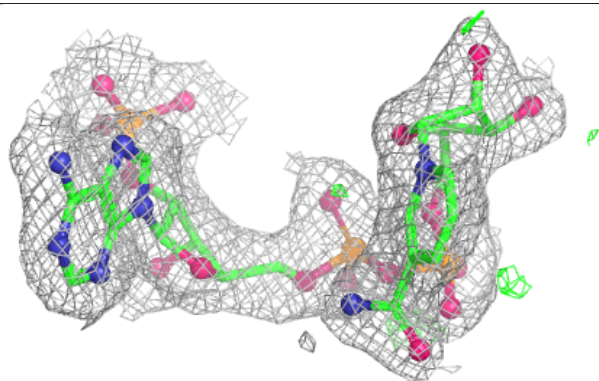
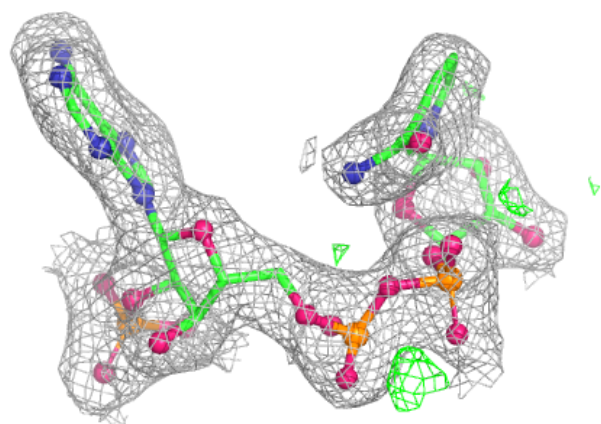
**Electron density around FAD A 304:**

$2mF_o-DF_c$  (at 0.7 rmsd) in gray  
 $mF_o-DF_c$  (at 3 rmsd) in purple (negative)  
and green (positive)

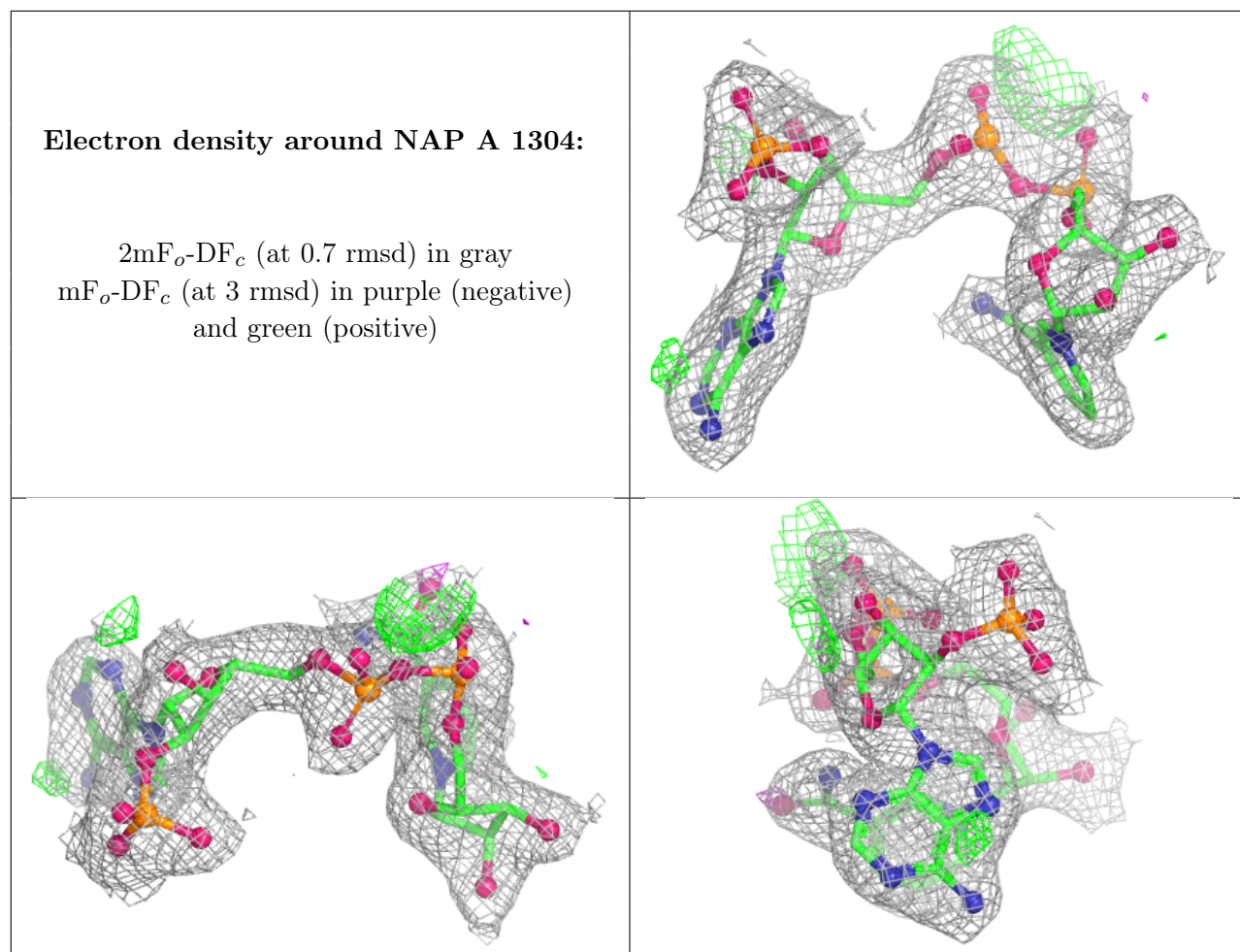


**Electron density around NAP B 1304:**

$2mF_o-DF_c$  (at 0.7 rmsd) in gray  
 $mF_o-DF_c$  (at 3 rmsd) in purple (negative)  
and green (positive)







## 6.5 Other polymers [i](#)

There are no such residues in this entry.