



Full wwPDB EM Validation Report ⓘ

Apr 29, 2024 – 06:32 am BST

PDB ID : 4CK5
EMDB ID : EMD-2537
Title : Pseudo-atomic model of microtubule-bound human kinesin-5 motor domain in the ADP state, based on cryo-electron microscopy experiment.
Authors : Goulet, A.; Major, J.; Jun, Y.; Gross, S.; Rosenfeld, S.; Moores, C.
Deposited on : 2013-12-30
Resolution : 10.00 Å (reported)
Based on initial models : 1JFF, 3HQD

This is a Full wwPDB EM Validation Report for a publicly released PDB entry.

We welcome your comments at validation@mail.wwpdb.org

A user guide is available at

<https://www.wwpdb.org/validation/2017/EMValidationReportHelp>

with specific help available everywhere you see the ⓘ symbol.

The types of validation reports are described at

<http://www.wwpdb.org/validation/2017/FAQs#types>.

The following versions of software and data (see [references ⓘ](#)) were used in the production of this report:

EMDB validation analysis : 0.0.1.dev92
Mogul : 1.8.4, CSD as541be (2020)
MolProbity : 4.02b-467
buster-report : 1.1.7 (2018)
Percentile statistics : 20191225.v01 (using entries in the PDB archive December 25th 2019)
MapQ : 1.9.13
Ideal geometry (proteins) : Engh & Huber (2001)
Ideal geometry (DNA, RNA) : Parkinson et al. (1996)
Validation Pipeline (wwPDB-VP) : 2.36.2

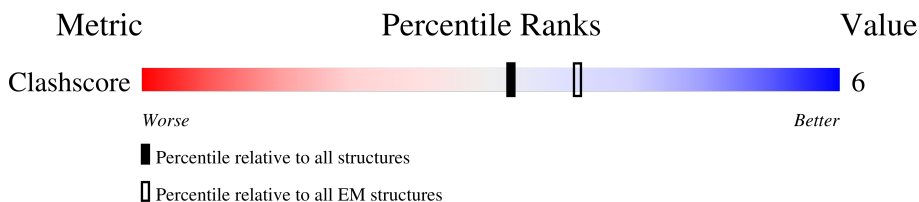
1 Overall quality at a glance

The following experimental techniques were used to determine the structure:

ELECTRON MICROSCOPY

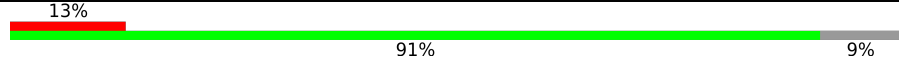
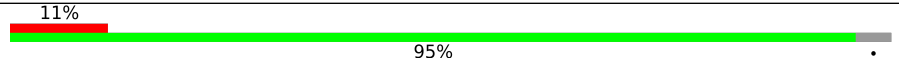
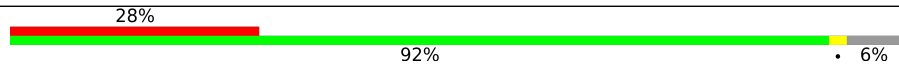
The reported resolution of this entry is 10.00 Å.

Percentile scores (ranging between 0-100) for global validation metrics of the entry are shown in the following graphic. The table shows the number of entries on which the scores are based.



Metric	Whole archive (#Entries)	EM structures (#Entries)
Clashscore	158937	4297

The table below summarises the geometric issues observed across the polymeric chains and their fit to the map. The red, orange, yellow and green segments of the bar indicate the fraction of residues that contain outliers for ≥ 3 , 2, 1 and 0 types of geometric quality criteria respectively. A grey segment represents the fraction of residues that are not modelled. The numeric value for each fraction is indicated below the corresponding segment, with a dot representing fractions $\leq 5\%$. The upper red bar (where present) indicates the fraction of residues that have poor fit to the EM map (all-atom inclusion $< 40\%$). The numeric value is given above the bar.

Mol	Chain	Length	Quality of chain
1	A	452	 13% 91% 9%
2	B	445	 11% 95% .
3	C	373	 28% 92% . 6%

2 Entry composition

There are 8 unique types of molecules in this entry. The entry contains 1338 atoms, of which 0 are hydrogens and 0 are deuteriums.

In the tables below, the AltConf column contains the number of residues with at least one atom in alternate conformation and the Trace column contains the number of residues modelled with at most 2 atoms.

- Molecule 1 is a protein called TUBULIN ALPHA-1D CHAIN.

Mol	Chain	Residues	Atoms	AltConf	Trace
1	A	412	Total C 412 412	0	412

There are 6 discrepancies between the modelled and reference sequences:

Chain	Residue	Modelled	Actual	Comment	Reference
A	7	ILE	VAL	conflict	UNP Q2HJ86
A	114	ILE	LEU	conflict	UNP Q2HJ86
A	136	SER	LEU	conflict	UNP Q2HJ86
A	137	VAL	ILE	conflict	UNP Q2HJ86
A	358	GLU	ASP	conflict	UNP Q2HJ86
A	437	VAL	MET	conflict	UNP Q2HJ86

- Molecule 2 is a protein called TUBULIN BETA-2B CHAIN.

Mol	Chain	Residues	Atoms	AltConf	Trace
2	B	426	Total C 426 426	0	426

There are 4 discrepancies between the modelled and reference sequences:

Chain	Residue	Modelled	Actual	Comment	Reference
B	55	ALA	THR	conflict	UNP Q6B856
B	170	VAL	MET	conflict	UNP Q6B856
B	296	ALA	SER	conflict	UNP Q6B856
B	316	VAL	ILE	conflict	UNP Q6B856

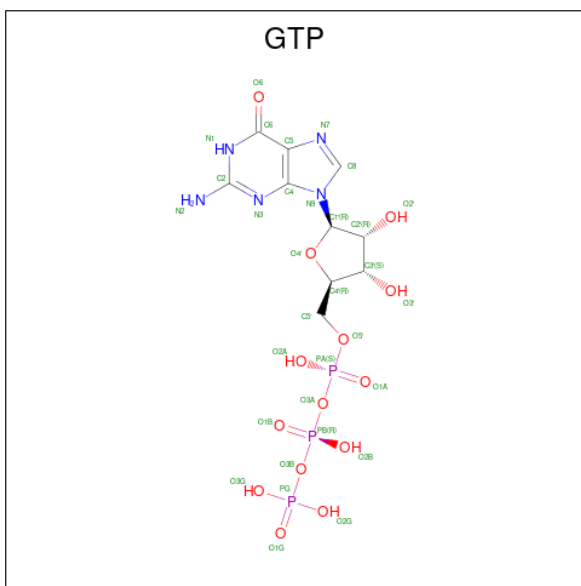
- Molecule 3 is a protein called KINESIN-LIKE PROTEIN KIF11.

Mol	Chain	Residues	Atoms	AltConf	Trace
3	C	350	Total C 350 350	0	350

There are 10 discrepancies between the modelled and reference sequences:

Chain	Residue	Modelled	Actual	Comment	Reference
C	43	SER	CYS	engineered mutation	UNP P52732
C	87	ALA	CYS	engineered mutation	UNP P52732
C	99	ALA	CYS	engineered mutation	UNP P52732
C	126	CYS	THR	engineered mutation	UNP P52732
C	361	HIS	-	expression tag	UNP P52732
C	362	HIS	-	expression tag	UNP P52732
C	363	HIS	-	expression tag	UNP P52732
C	364	HIS	-	expression tag	UNP P52732
C	365	HIS	-	expression tag	UNP P52732
C	366	HIS	-	expression tag	UNP P52732

- Molecule 4 is GUANOSINE-5'-TRIPHOSPHATE (three-letter code: GTP) (formula: $C_{10}H_{16}N_5O_{14}P_3$).



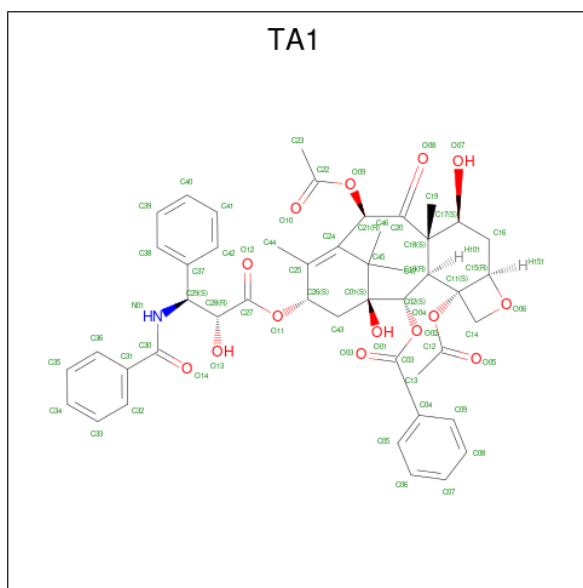
Mol	Chain	Residues	Atoms				AltConf	
			Total	C	N	O		P
4	A	1	32	10	5	14	3	0

- Molecule 5 is GUANOSINE-5'-DIPHOSPHATE (three-letter code: GDP) (formula: $C_{10}H_{15}N_5O_{11}P_2$).



Mol	Chain	Residues	Atoms					AltConf
			Total	C	N	O	P	
5	B	1	28	10	5	11	2	0

- Molecule 6 is TAXOL (three-letter code: TA1) (formula: $C_{47}H_{51}NO_{14}$).

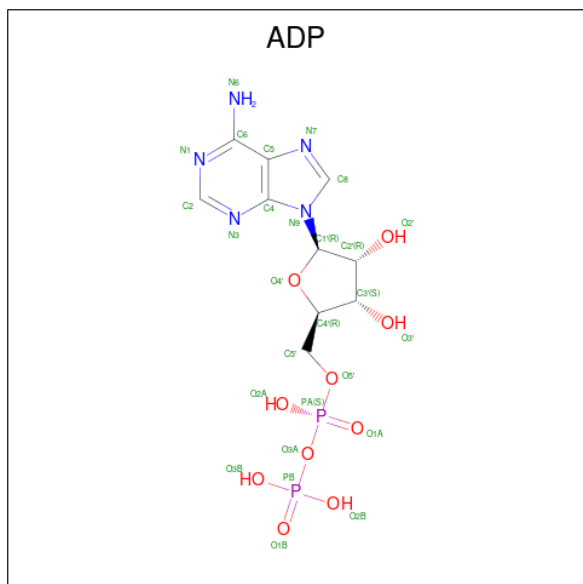


Mol	Chain	Residues	Atoms					AltConf
			Total	C	N	O		
6	B	1	62	47	1	14		0

- Molecule 7 is MAGNESIUM ION (three-letter code: MG) (formula: Mg).

Mol	Chain	Residues	Atoms		AltConf
7	C	1	Total	Mg	0
			1	1	

- Molecule 8 is ADENOSINE-5'-DIPHOSPHATE (three-letter code: ADP) (formula: $C_{10}H_{15}N_5O_{10}P_2$).

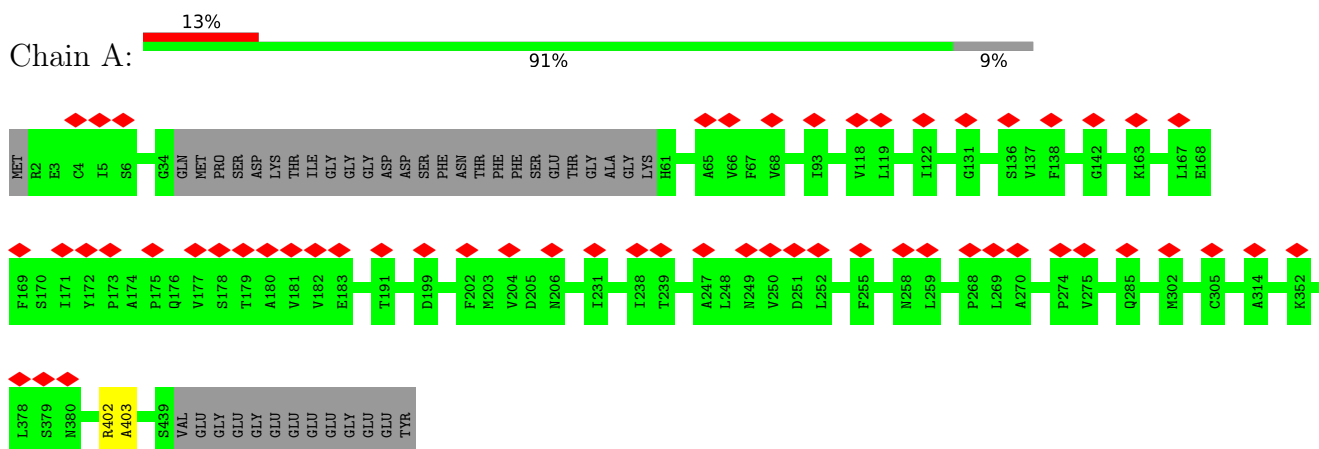


Mol	Chain	Residues	Atoms					AltConf
			Total	C	N	O	P	
8	C	1	27	10	5	10	2	0

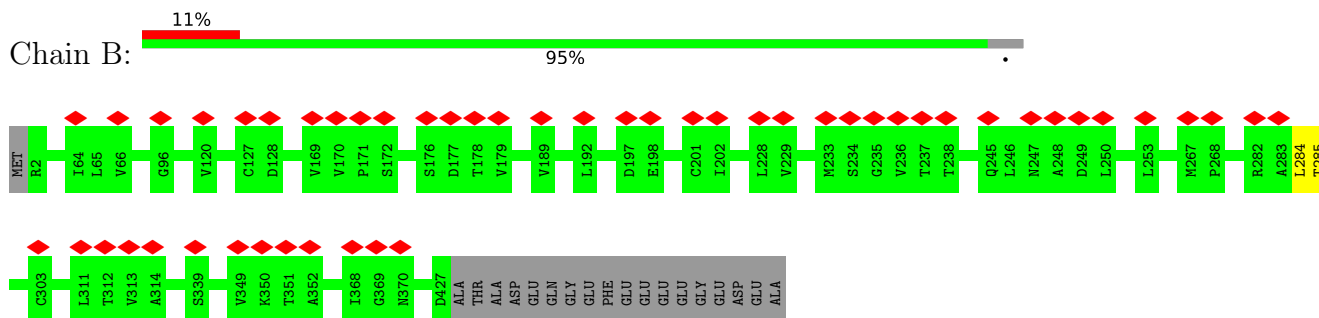
3 Residue-property plots [i](#)

These plots are drawn for all protein, RNA, DNA and oligosaccharide chains in the entry. The first graphic for a chain summarises the proportions of the various outlier classes displayed in the second graphic. The second graphic shows the sequence view annotated by issues in geometry and atom inclusion in map density. Residues are color-coded according to the number of geometric quality criteria for which they contain at least one outlier: green = 0, yellow = 1, orange = 2 and red = 3 or more. A red diamond above a residue indicates a poor fit to the EM map for this residue (all-atom inclusion < 40%). Stretches of 2 or more consecutive residues without any outlier are shown as a green connector. Residues present in the sample, but not in the model, are shown in grey.

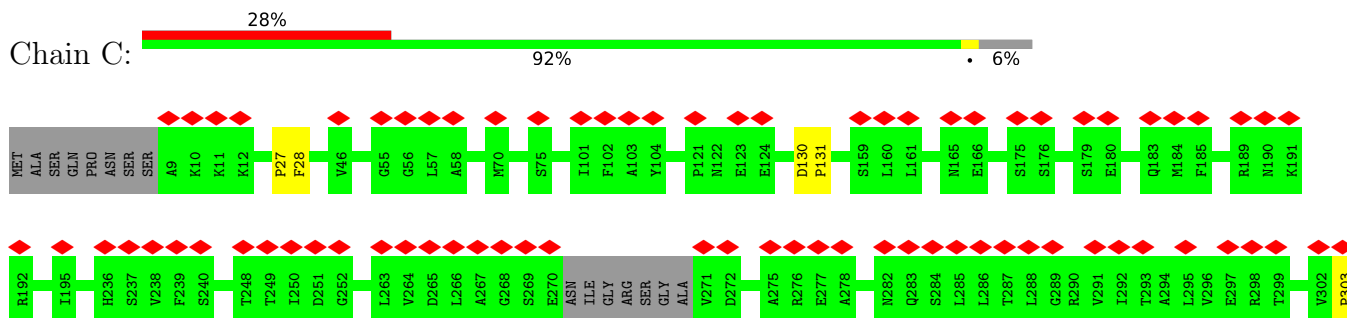
- Molecule 1: TUBULIN ALPHA-1D CHAIN



- Molecule 2: TUBULIN BETA-2B CHAIN



- Molecule 3: KINESIN-LIKE PROTEIN KIF11



Y304	R305	E306	S307	K308	L309	T310	I326	I329	L336	E337	E338	T339	L340	S341	T342	L343	E344	Y345	A346	H347	R348	A349	K350	N351	I352	L353	N354	E357	V358	ASN	GLN	HIS	HIS	HIS	HIS	HIS	HIS
------	------	------	------	------	------	------	------	------	------	------	------	------	------	------	------	------	------	------	------	------	------	------	------	------	------	------	------	------	------	-----	-----	-----	-----	-----	-----	-----	-----

4 Experimental information

Property	Value	Source
EM reconstruction method	SINGLE PARTICLE	Depositor
Imposed symmetry	POINT, C1	Depositor
Number of particles used	9615	Depositor
Resolution determination method	Not provided	
CTF correction method	FREALIGN	Depositor
Microscope	FEI TECNAI F20	Depositor
Voltage (kV)	200	Depositor
Electron dose ($e^-/\text{\AA}^2$)	18	Depositor
Minimum defocus (nm)	700	Depositor
Maximum defocus (nm)	2400	Depositor
Magnification	68000	Depositor
Image detector	GATAN ULTRASCAN 4000 (4k x 4k)	Depositor
Maximum map value	7.653	Depositor
Minimum map value	-5.130	Depositor
Average map value	0.475	Depositor
Map value standard deviation	1.742	Depositor
Recommended contour level	1.5	Depositor
Map size (\AA)	110.0, 110.0, 110.0	wwPDB
Map dimensions	50, 50, 50	wwPDB
Map angles ($^\circ$)	90.0, 90.0, 90.0	wwPDB
Pixel spacing (\AA)	2.2, 2.2, 2.2	Depositor

5 Model quality

5.1 Standard geometry

Bond lengths and bond angles in the following residue types are not validated in this section: TA1, GTP, MG, GDP, ADP

The Z score for a bond length (or angle) is the number of standard deviations the observed value is removed from the expected value. A bond length (or angle) with $|Z| > 5$ is considered an outlier worth inspection. RMSZ is the root-mean-square of all Z scores of the bond lengths (or angles).

There are no protein, RNA or DNA chains available to summarize Z scores of covalent bonds and angles.

There are no bond length outliers.

There are no bond angle outliers.

There are no chirality outliers.

There are no planarity outliers.

5.2 Too-close contacts

In the following table, the Non-H and H(model) columns list the number of non-hydrogen atoms and hydrogen atoms in the chain respectively. The H(added) column lists the number of hydrogen atoms added and optimized by MolProbity. The Clashes column lists the number of clashes within the asymmetric unit, whereas Symm-Clashes lists symmetry-related clashes.

Mol	Chain	Non-H	H(model)	H(added)	Clashes	Symm-Clashes
1	A	412	0	0	1	0
2	B	426	0	0	1	0
3	C	350	0	0	3	0
4	A	32	0	12	0	0
5	B	28	0	12	0	0
6	B	62	0	51	3	0
7	C	1	0	0	0	0
8	C	27	0	12	0	0
All	All	1338	0	87	8	0

The all-atom clashscore is defined as the number of clashes found per 1000 atoms (including hydrogen atoms). The all-atom clashscore for this structure is 6.

All (8) close contacts within the same asymmetric unit are listed below, sorted by their clash magnitude.

Atom-1	Atom-2	Interatomic distance (Å)	Clash overlap (Å)
1:A:402:ARG:CA	1:A:403:ALA:CA	2.54	0.85
3:C:27:PRO:CA	3:C:28:PHE:CA	2.65	0.74
6:B:1187:TA1:H261	6:B:1187:TA1:H463	1.80	0.63
3:C:303:PRO:CA	3:C:304:TYR:CA	2.81	0.58
2:B:284:LEU:CA	2:B:285:THR:CA	2.86	0.53
3:C:130:ASP:CA	3:C:131:PRO:CA	2.92	0.47
6:B:1187:TA1:H463	6:B:1187:TA1:C26	2.46	0.46
6:B:1187:TA1:C25	6:B:1187:TA1:H101	2.52	0.40

There are no symmetry-related clashes.

5.3 Torsion angles [i](#)

5.3.1 Protein backbone [i](#)

There are no protein backbone outliers to report in this entry.

5.3.2 Protein sidechains [i](#)

There are no protein residues with a non-rotameric sidechain to report in this entry.

5.3.3 RNA [i](#)

There are no RNA molecules in this entry.

5.4 Non-standard residues in protein, DNA, RNA chains [i](#)

There are no non-standard protein/DNA/RNA residues in this entry.

5.5 Carbohydrates [i](#)

There are no monosaccharides in this entry.

5.6 Ligand geometry [i](#)

Of 5 ligands modelled in this entry, 1 is monoatomic - leaving 4 for Mogul analysis.

In the following table, the Counts columns list the number of bonds (or angles) for which Mogul statistics could be retrieved, the number of bonds (or angles) that are observed in the model and

the number of bonds (or angles) that are defined in the Chemical Component Dictionary. The Link column lists molecule types, if any, to which the group is linked. The Z score for a bond length (or angle) is the number of standard deviations the observed value is removed from the expected value. A bond length (or angle) with $|Z| > 2$ is considered an outlier worth inspection. RMSZ is the root-mean-square of all Z scores of the bond lengths (or angles).

Mol	Type	Chain	Res	Link	Bond lengths			Bond angles		
					Counts	RMSZ	# Z > 2	Counts	RMSZ	# Z > 2
4	GTP	A	1185	-	26,34,34	1.31	4 (15%)	32,54,54	1.11	3 (9%)
5	GDP	B	1186	-	24,30,30	2.58	9 (37%)	30,47,47	2.94	8 (26%)
8	ADP	C	1184	7	24,29,29	1.25	2 (8%)	29,45,45	1.41	5 (17%)
6	TA1	B	1187	-	68,68,68	1.99	19 (27%)	105,105,105	1.38	11 (10%)

In the following table, the Chirals column lists the number of chiral outliers, the number of chiral centers analysed, the number of these observed in the model and the number defined in the Chemical Component Dictionary. Similar counts are reported in the Torsion and Rings columns. '-' means no outliers of that kind were identified.

Mol	Type	Chain	Res	Link	Chirals	Torsions	Rings
4	GTP	A	1185	-	-	3/18/38/38	0/3/3/3
5	GDP	B	1186	-	-	4/12/32/32	0/3/3/3
8	ADP	C	1184	7	-	3/12/32/32	0/3/3/3
6	TA1	B	1187	-	-	9/41/127/127	0/7/7/7

All (34) bond length outliers are listed below:

Mol	Chain	Res	Type	Atoms	Z	Observed(Å)	Ideal(Å)
5	B	1186	GDP	O4'-C1'	6.18	1.49	1.41
5	B	1186	GDP	O6-C6	5.65	1.34	1.23
6	B	1187	TA1	C06-C05	5.17	1.49	1.38
6	B	1187	TA1	C18-C10	4.94	1.68	1.57
5	B	1186	GDP	C2-N1	4.61	1.49	1.37
6	B	1187	TA1	C08-C07	-4.50	1.26	1.38
6	B	1187	TA1	C05-C04	4.43	1.46	1.39
6	B	1187	TA1	C45-C24	4.05	1.61	1.54
4	A	1185	GTP	C5-C6	-3.75	1.39	1.47
5	B	1186	GDP	PB-O2B	-3.74	1.40	1.54
5	B	1186	GDP	C8-N7	3.56	1.41	1.35
6	B	1187	TA1	O02-C03	3.55	1.41	1.34
8	C	1184	ADP	C8-N7	-3.54	1.28	1.34
6	B	1187	TA1	C25-C24	3.43	1.39	1.34
6	B	1187	TA1	C36-C31	3.27	1.44	1.39
6	B	1187	TA1	C11-C10	3.08	1.61	1.54

Continued on next page...

Continued from previous page...

Mol	Chain	Res	Type	Atoms	Z	Observed(Å)	Ideal(Å)
6	B	1187	TA1	C46-C45	3.01	1.59	1.53
6	B	1187	TA1	C43-C01	3.00	1.60	1.54
5	B	1186	GDP	C5-C6	-2.90	1.41	1.47
6	B	1187	TA1	C43-C26	2.82	1.58	1.52
4	A	1185	GTP	C6-N1	2.58	1.41	1.37
8	C	1184	ADP	C2'-C3'	2.51	1.60	1.53
6	B	1187	TA1	C18-C20	2.51	1.62	1.55
6	B	1187	TA1	C01-C45	2.44	1.66	1.56
6	B	1187	TA1	C04-C03	-2.44	1.44	1.50
4	A	1185	GTP	C8-N7	-2.43	1.30	1.35
5	B	1186	GDP	C2-N3	-2.38	1.27	1.33
6	B	1187	TA1	C26-C25	2.36	1.56	1.51
5	B	1186	GDP	PB-O3B	2.35	1.63	1.54
4	A	1185	GTP	O4'-C1'	2.27	1.44	1.41
6	B	1187	TA1	C16-C15	2.26	1.56	1.52
5	B	1186	GDP	O3'-C3'	2.12	1.48	1.43
6	B	1187	TA1	C10-C02	2.08	1.62	1.57
6	B	1187	TA1	C37-C29	2.06	1.54	1.52

All (27) bond angle outliers are listed below:

Mol	Chain	Res	Type	Atoms	Z	Observed(°)	Ideal(°)
5	B	1186	GDP	C8-N7-C5	9.37	120.84	102.99
5	B	1186	GDP	N2-C2-N3	6.28	131.96	119.74
5	B	1186	GDP	C5-C6-N1	6.11	124.74	113.95
6	B	1187	TA1	C06-C05-C04	-4.73	114.75	120.34
6	B	1187	TA1	C07-C08-C09	4.66	127.30	120.19
8	C	1184	ADP	O2A-PA-O1A	4.55	134.72	112.24
5	B	1186	GDP	O6-C6-C5	-4.32	115.94	124.37
5	B	1186	GDP	N2-C2-N1	-4.22	107.72	116.71
6	B	1187	TA1	C05-C04-C03	-3.92	111.56	120.40
5	B	1186	GDP	C2-N1-C6	-3.72	118.25	125.10
6	B	1187	TA1	C09-C04-C03	3.57	128.45	120.40
5	B	1186	GDP	C2'-C3'-C4'	3.37	109.19	102.64
6	B	1187	TA1	C17-C18-C20	3.11	109.77	102.59
6	B	1187	TA1	C45-C01-C02	3.03	115.23	111.91
6	B	1187	TA1	O04-C11-C14	-2.91	101.73	108.09
4	A	1185	GTP	O2G-PG-O3B	2.67	113.60	104.64
6	B	1187	TA1	O01-C01-C43	2.52	113.33	107.03
8	C	1184	ADP	C3'-C2'-C1'	2.29	104.42	100.98
5	B	1186	GDP	O2'-C2'-C3'	2.26	119.14	111.82
8	C	1184	ADP	O5'-C5'-C4'	2.21	116.60	108.99

Continued on next page...

Continued from previous page...

Mol	Chain	Res	Type	Atoms	Z	Observed(°)	Ideal(°)
6	B	1187	TA1	O06-C15-C11	2.21	93.06	90.58
6	B	1187	TA1	C14-C11-C15	-2.17	83.10	85.40
6	B	1187	TA1	C10-C18-C17	-2.13	102.40	106.54
8	C	1184	ADP	PA-O3A-PB	2.10	140.02	132.83
4	A	1185	GTP	O5'-C5'-C4'	2.06	116.08	108.99
4	A	1185	GTP	O3G-PG-O3B	2.02	111.41	104.64
8	C	1184	ADP	C2'-C3'-C4'	2.01	106.54	102.64

There are no chirality outliers.

All (19) torsion outliers are listed below:

Mol	Chain	Res	Type	Atoms
5	B	1186	GDP	PA-O3A-PB-O2B
5	B	1186	GDP	C5'-O5'-PA-O3A
5	B	1186	GDP	C5'-O5'-PA-O1A
6	B	1187	TA1	O02-C03-C04-C05
6	B	1187	TA1	O02-C03-C04-C09
6	B	1187	TA1	O03-C03-C04-C09
6	B	1187	TA1	O03-C03-C04-C05
6	B	1187	TA1	N01-C30-C31-C36
6	B	1187	TA1	O14-C30-C31-C36
6	B	1187	TA1	N01-C30-C31-C32
6	B	1187	TA1	O14-C30-C31-C32
4	A	1185	GTP	C3'-C4'-C5'-O5'
8	C	1184	ADP	C4'-C5'-O5'-PA
8	C	1184	ADP	C5'-O5'-PA-O3A
4	A	1185	GTP	O4'-C4'-C5'-O5'
5	B	1186	GDP	PA-O3A-PB-O3B
6	B	1187	TA1	C15-C11-O04-C12
4	A	1185	GTP	C5'-O5'-PA-O1A
8	C	1184	ADP	C5'-O5'-PA-O2A

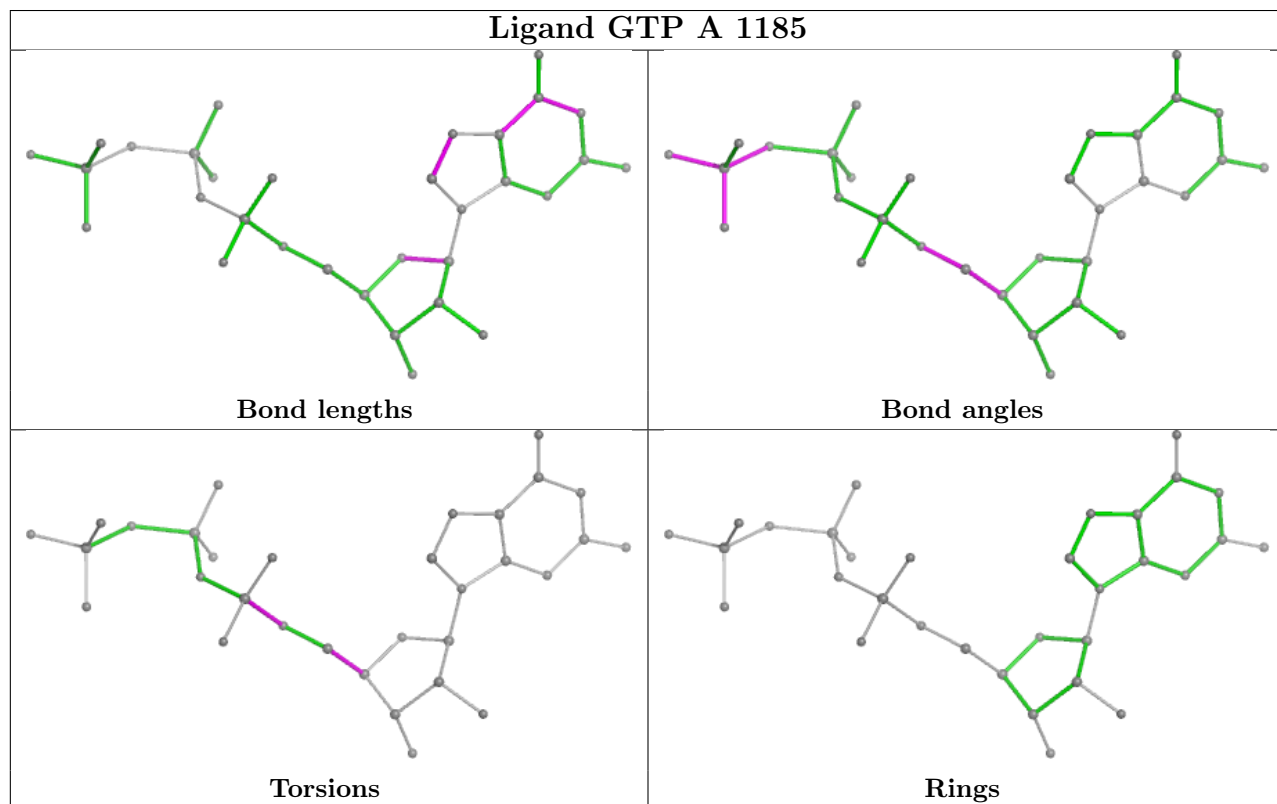
There are no ring outliers.

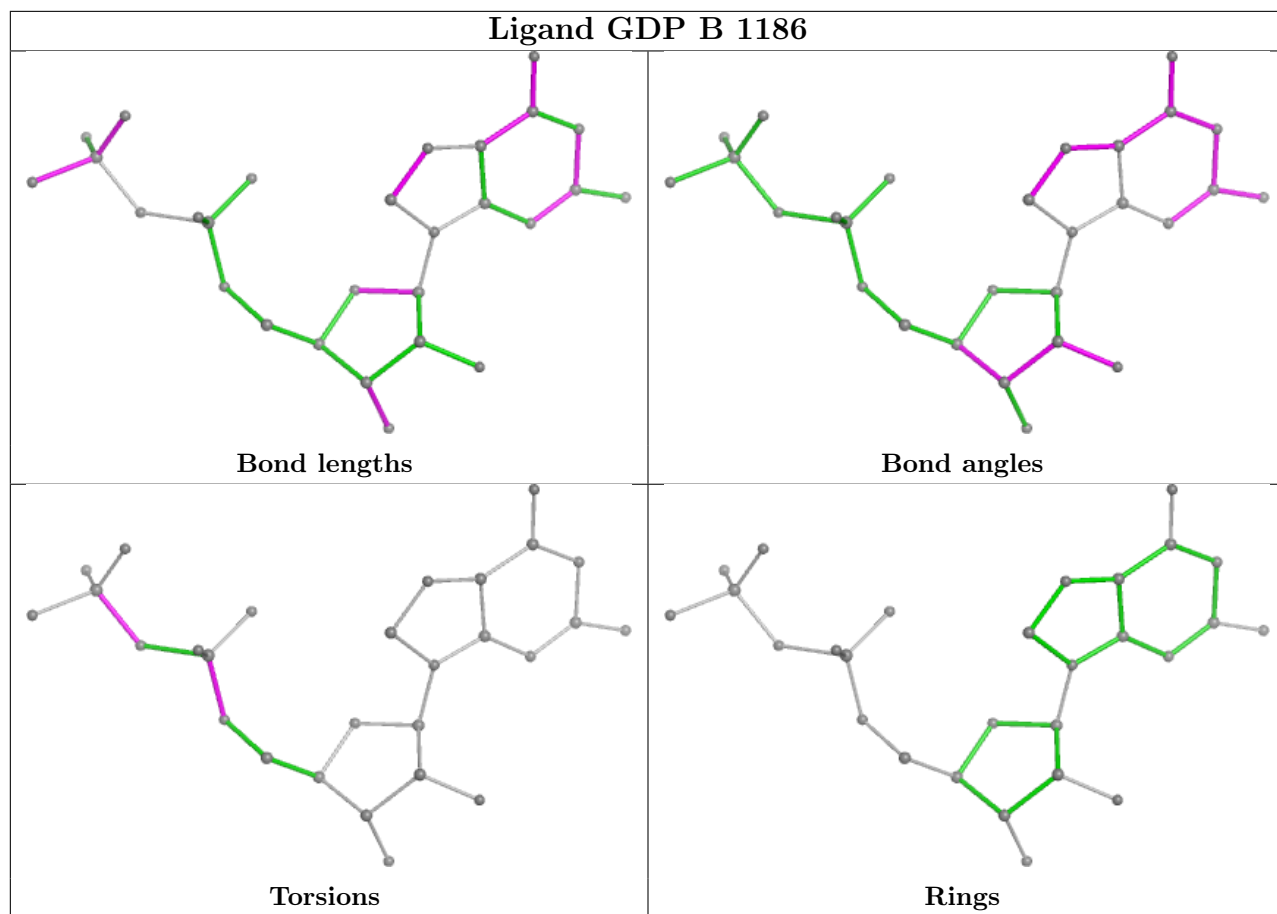
1 monomer is involved in 3 short contacts:

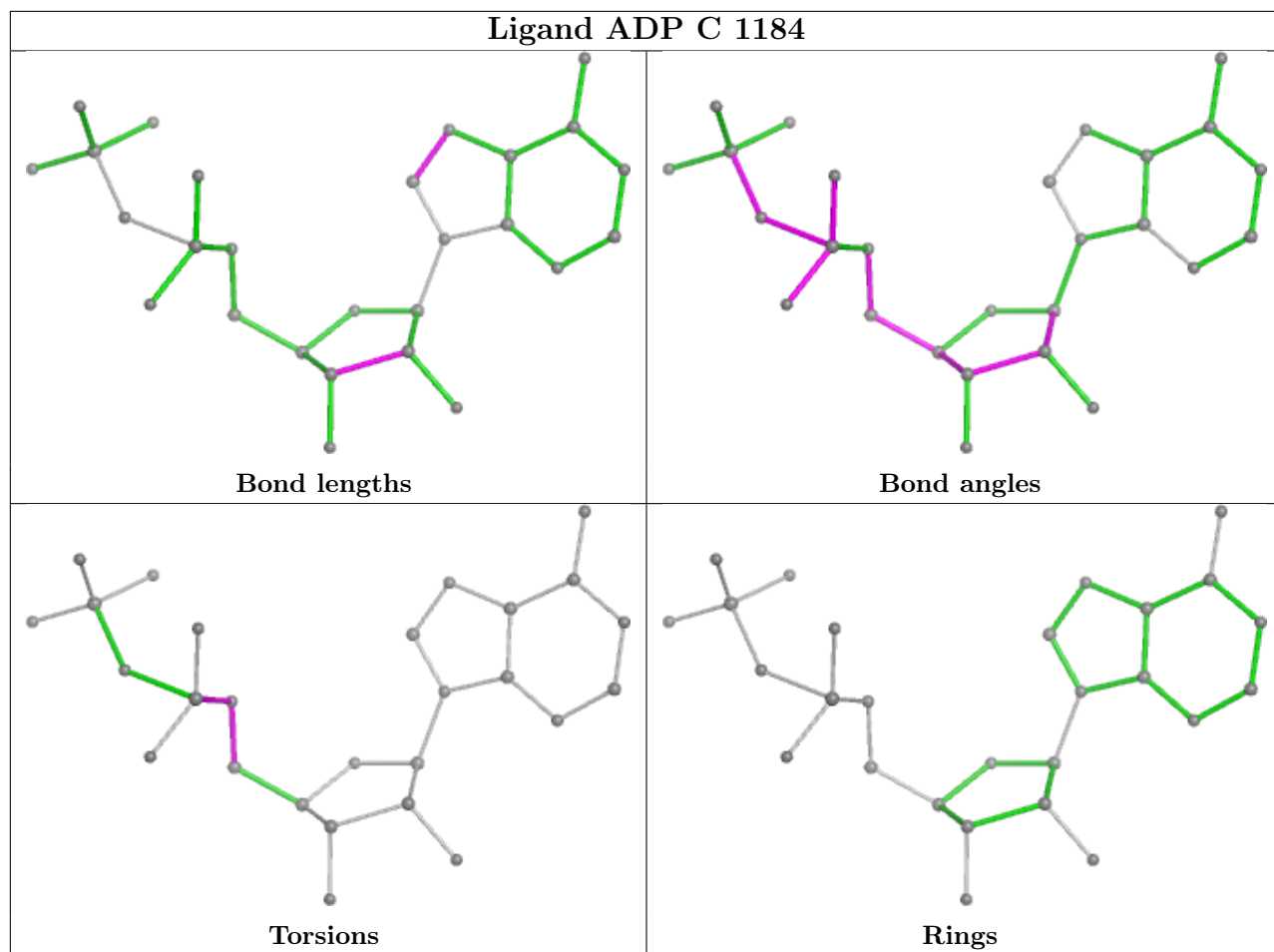
Mol	Chain	Res	Type	Clashes	Symm-Clashes
6	B	1187	TA1	3	0

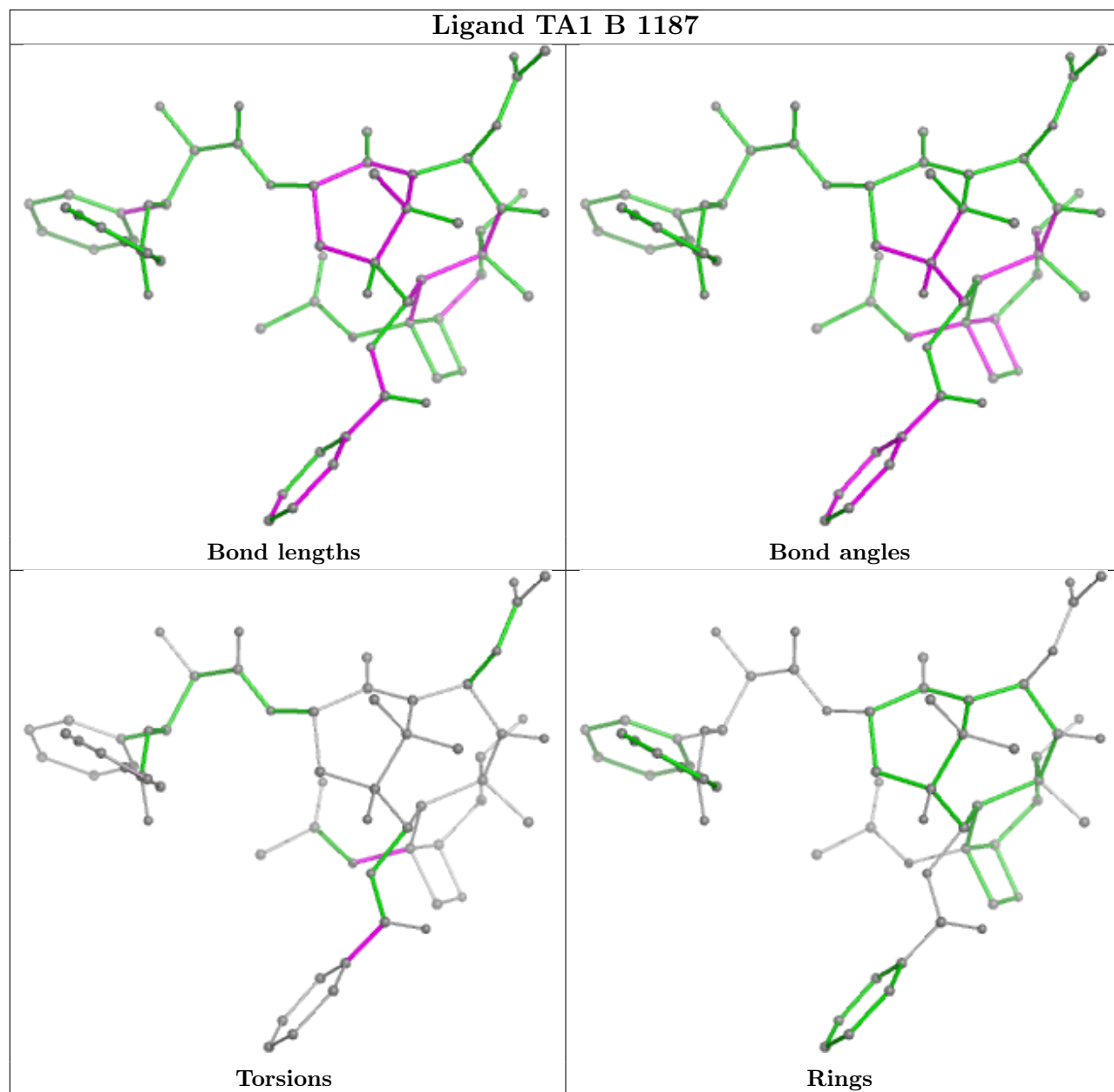
The following is a two-dimensional graphical depiction of Mogul quality analysis of bond lengths, bond angles, torsion angles, and ring geometry for all instances of the Ligand of Interest. In addition, ligands with molecular weight > 250 and outliers as shown on the validation Tables will

also be included. For torsion angles, if less than 5% of the Mogul distribution of torsion angles is within 10 degrees of the torsion angle in question, then that torsion angle is considered an outlier. Any bond that is central to one or more torsion angles identified as an outlier by Mogul will be highlighted in the graph. For rings, the root-mean-square deviation (RMSD) between the ring in question and similar rings identified by Mogul is calculated over all ring torsion angles. If the average RMSD is greater than 60 degrees and the minimal RMSD between the ring in question and any Mogul-identified rings is also greater than 60 degrees, then that ring is considered an outlier. The outliers are highlighted in purple. The color gray indicates Mogul did not find sufficient equivalents in the CSD to analyse the geometry.









5.7 Other polymers [i](#)

There are no such residues in this entry.

5.8 Polymer linkage issues [i](#)

There are no chain breaks in this entry.

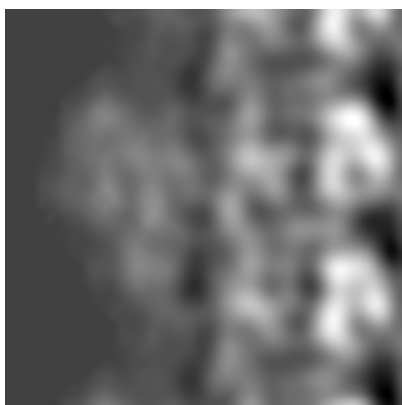
6 Map visualisation [i](#)

This section contains visualisations of the EMDB entry EMD-2537. These allow visual inspection of the internal detail of the map and identification of artifacts.

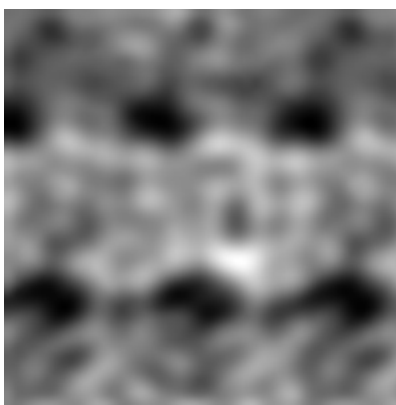
No raw map or half-maps were deposited for this entry and therefore no images, graphs, etc. pertaining to the raw map can be shown.

6.1 Orthogonal projections [i](#)

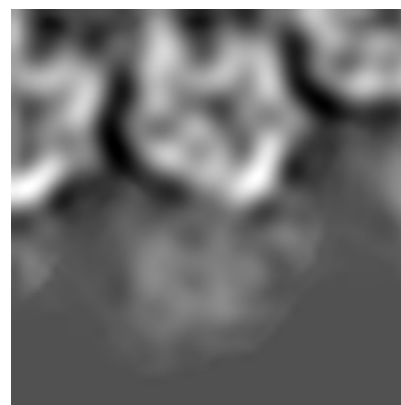
6.1.1 Primary map



X



Y



Z

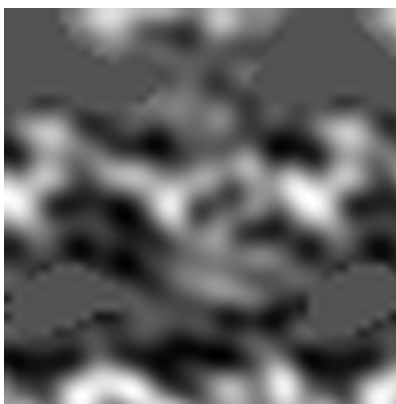
The images above show the map projected in three orthogonal directions.

6.2 Central slices [i](#)

6.2.1 Primary map



X Index: 25



Y Index: 25



Z Index: 25

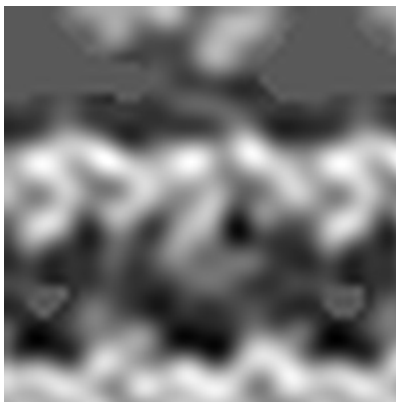
The images above show central slices of the map in three orthogonal directions.

6.3 Largest variance slices [i](#)

6.3.1 Primary map



X Index: 18



Y Index: 28

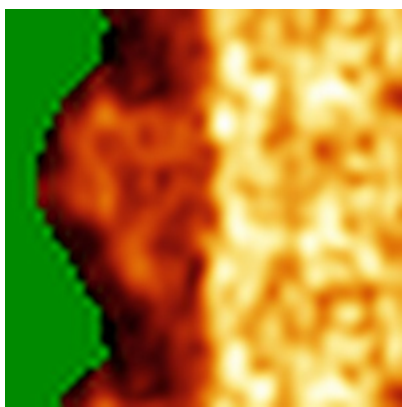


Z Index: 36

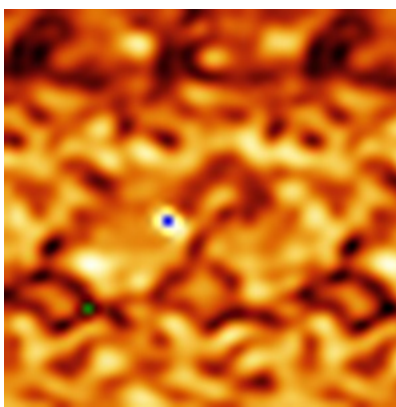
The images above show the largest variance slices of the map in three orthogonal directions.

6.4 Orthogonal standard-deviation projections (False-color) [i](#)

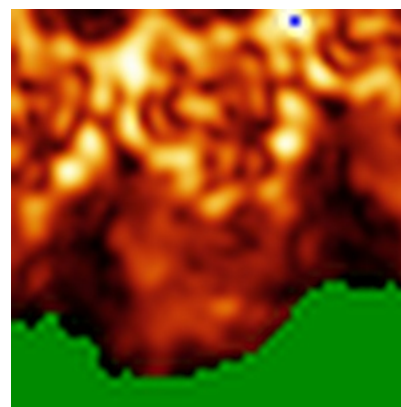
6.4.1 Primary map



X



Y

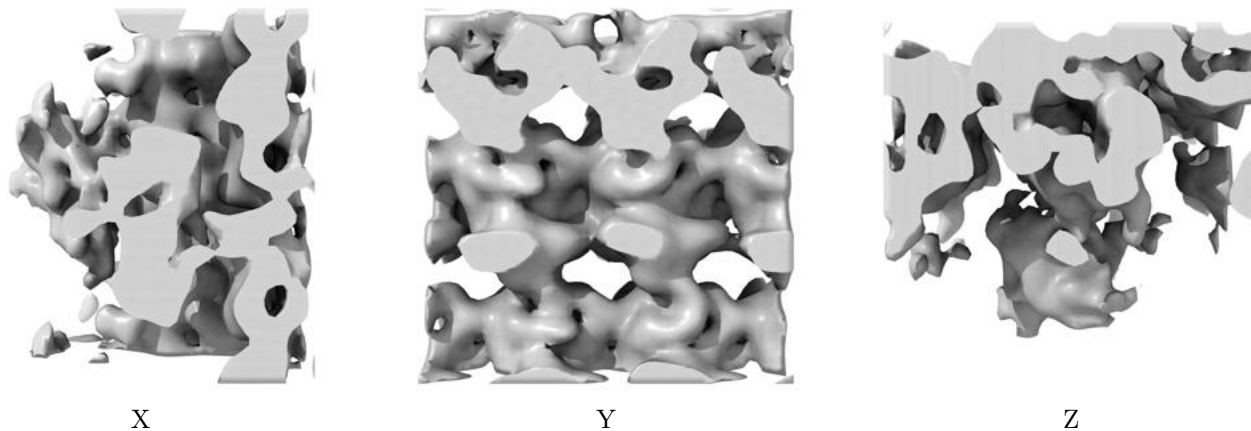


Z

The images above show the map standard deviation projections with false color in three orthogonal directions. Minimum values are shown in green, max in blue, and dark to light orange shades represent small to large values respectively.

6.5 Orthogonal surface views [i](#)

6.5.1 Primary map



The images above show the 3D surface view of the map at the recommended contour level 1.5. These images, in conjunction with the slice images, may facilitate assessment of whether an appropriate contour level has been provided.

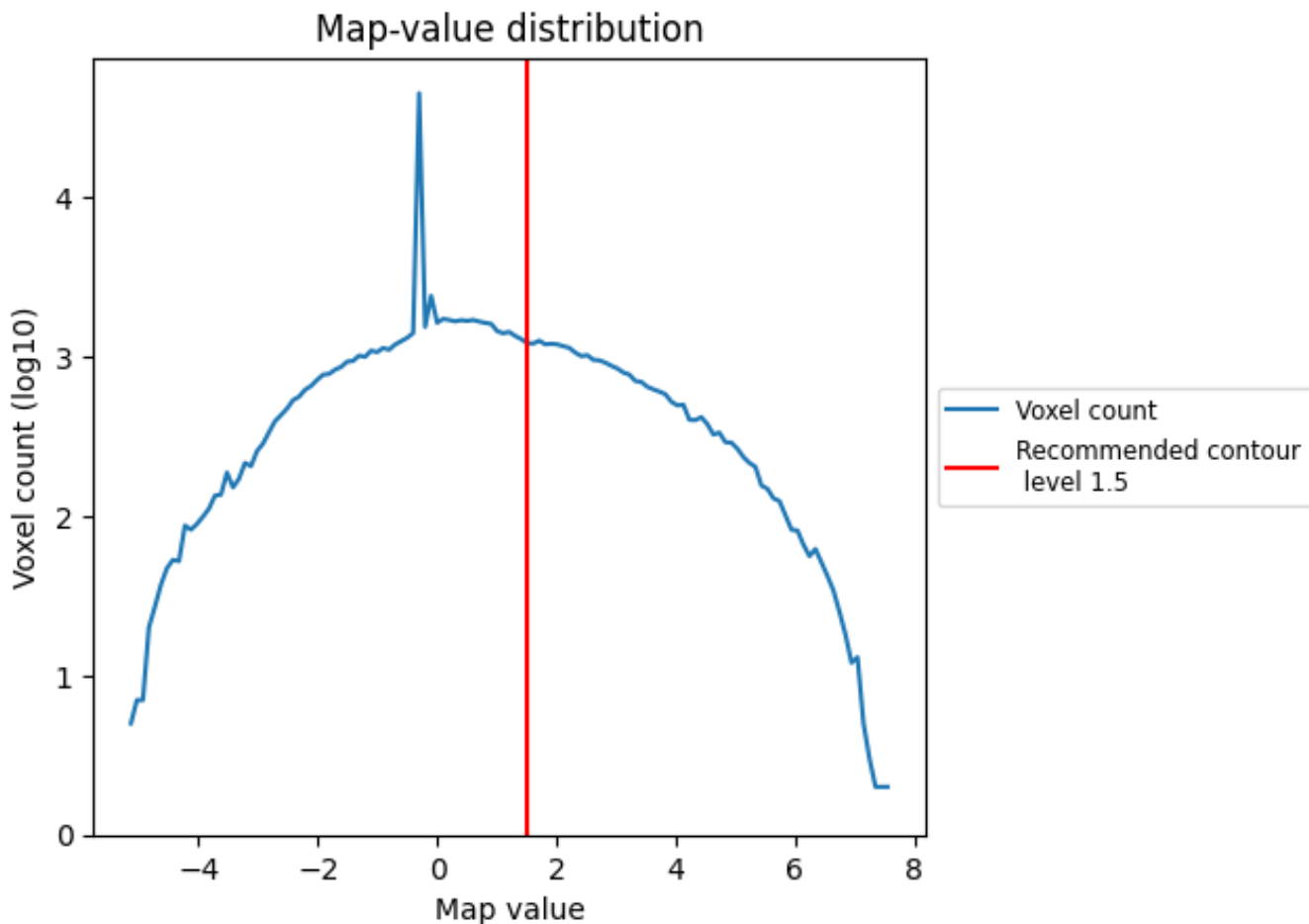
6.6 Mask visualisation [i](#)

This section was not generated. No masks/segmentation were deposited.

7 Map analysis [i](#)

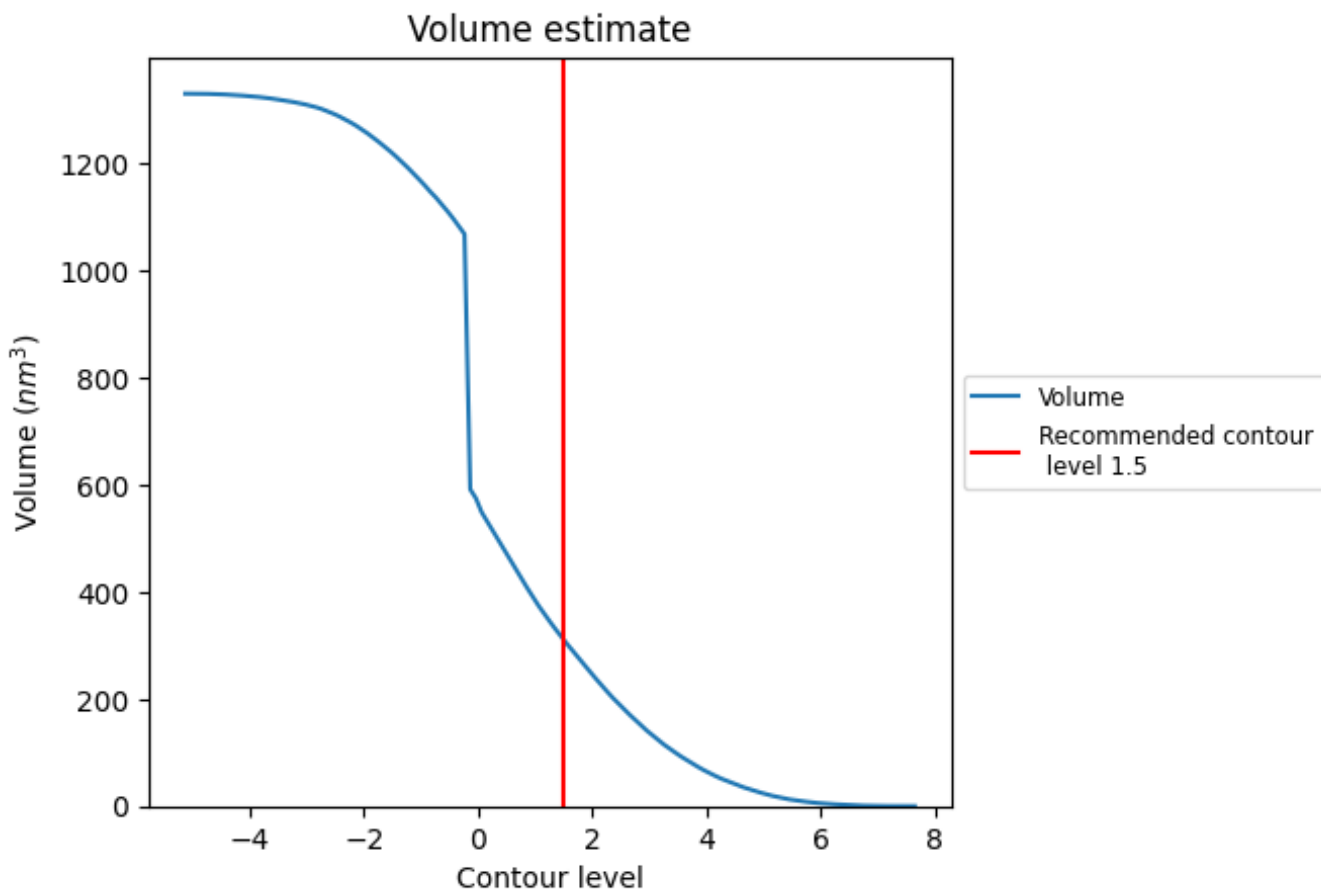
This section contains the results of statistical analysis of the map.

7.1 Map-value distribution [i](#)



The map-value distribution is plotted in 128 intervals along the x-axis. The y-axis is logarithmic. A spike in this graph at zero usually indicates that the volume has been masked.

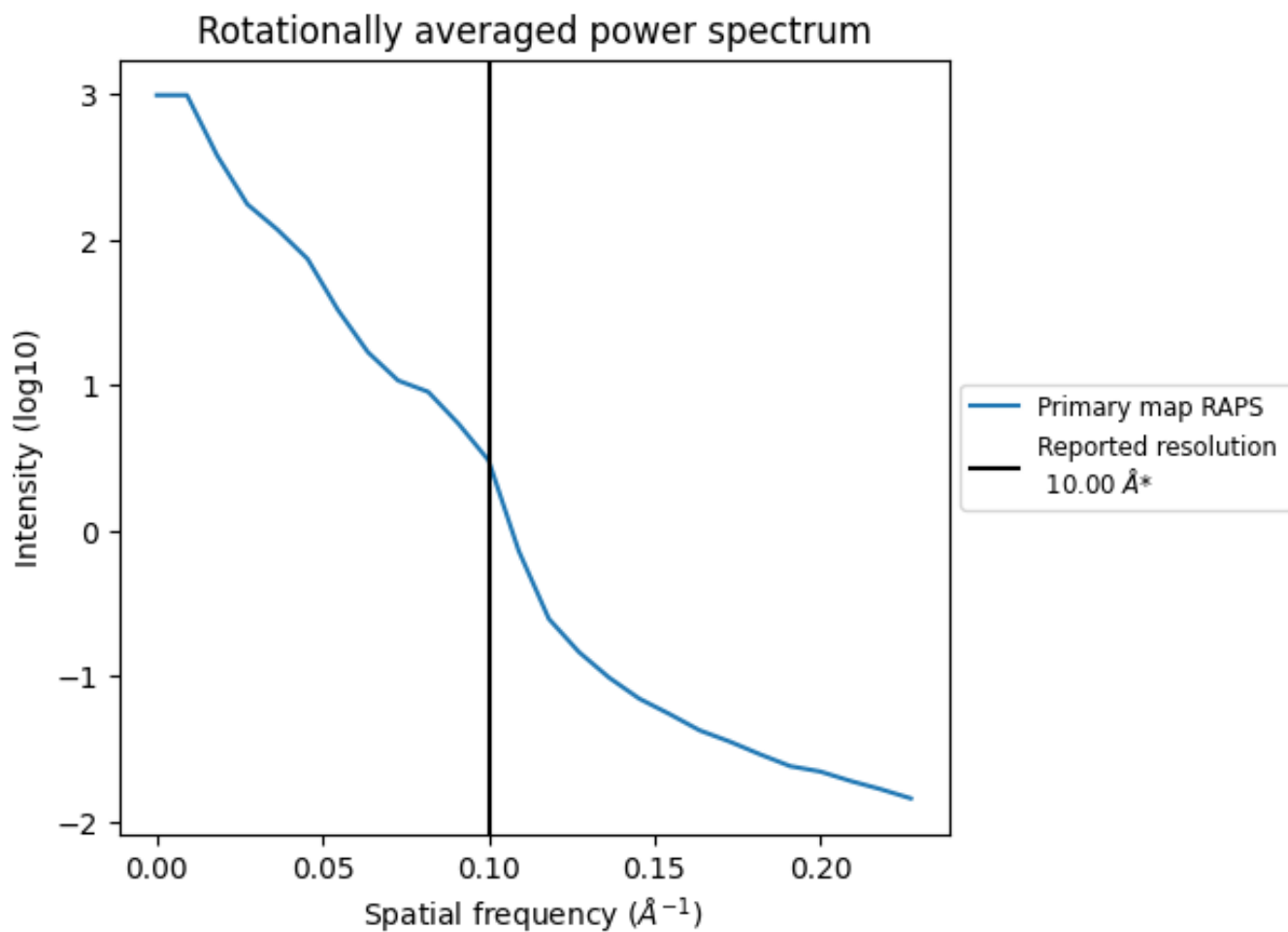
7.2 Volume estimate [\(i\)](#)



The volume at the recommended contour level is 311 nm^3 ; this corresponds to an approximate mass of 281 kDa.

The volume estimate graph shows how the enclosed volume varies with the contour level. The recommended contour level is shown as a vertical line and the intersection between the line and the curve gives the volume of the enclosed surface at the given level.

7.3 Rotationally averaged power spectrum [i](#)



*Reported resolution corresponds to spatial frequency of 0.100 Å⁻¹

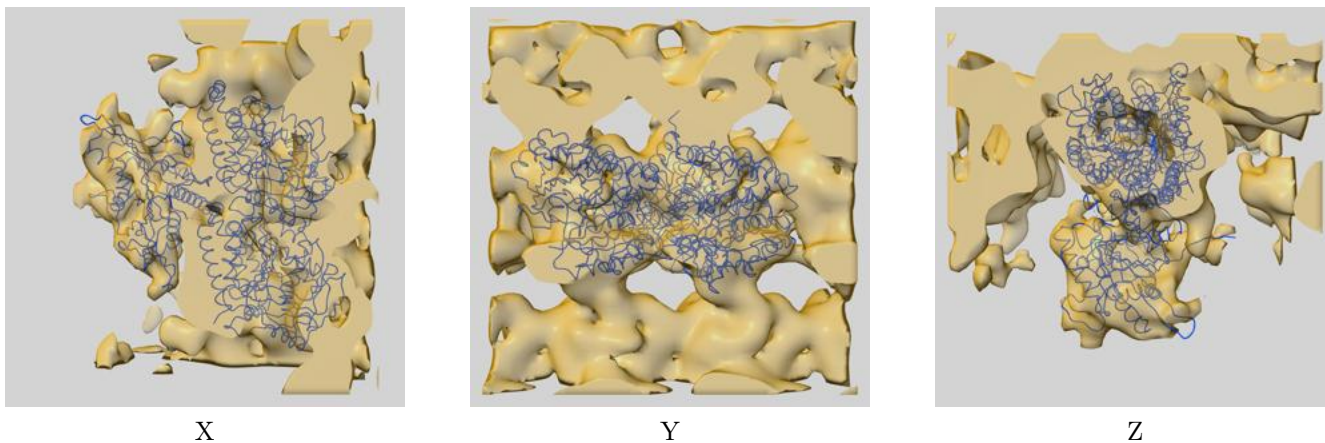
8 Fourier-Shell correlation

This section was not generated. No FSC curve or half-maps provided.

9 Map-model fit [i](#)

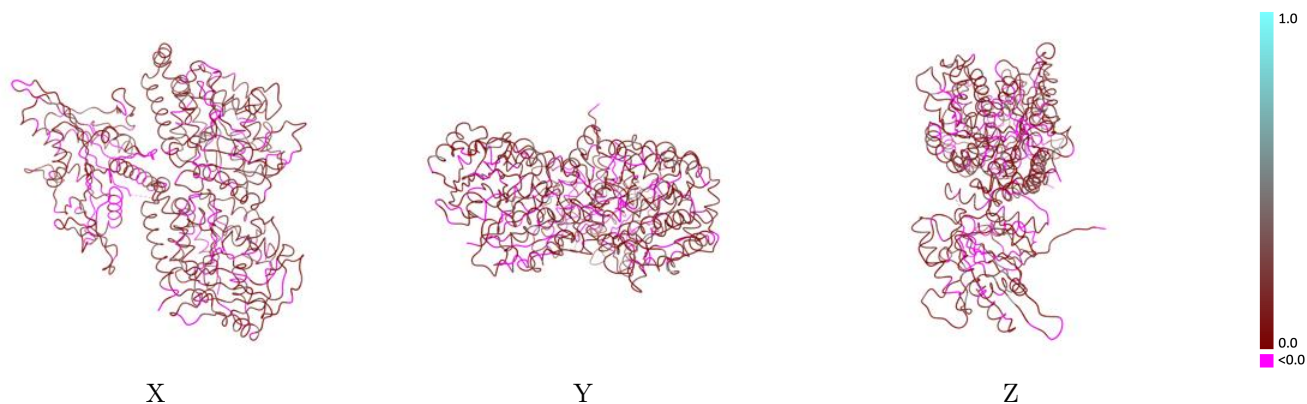
This section contains information regarding the fit between EMDB map EMD-2537 and PDB model 4CK5. Per-residue inclusion information can be found in section 3 on page 7.

9.1 Map-model overlay [i](#)



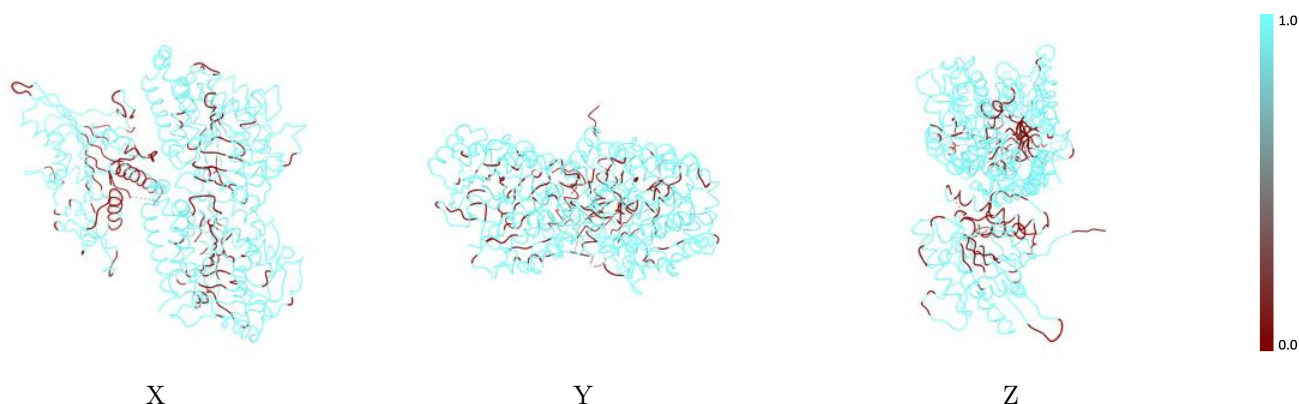
The images above show the 3D surface view of the map at the recommended contour level 1.5 at 50% transparency in yellow overlaid with a ribbon representation of the model coloured in blue. These images allow for the visual assessment of the quality of fit between the atomic model and the map.

9.2 Q-score mapped to coordinate model [i](#)



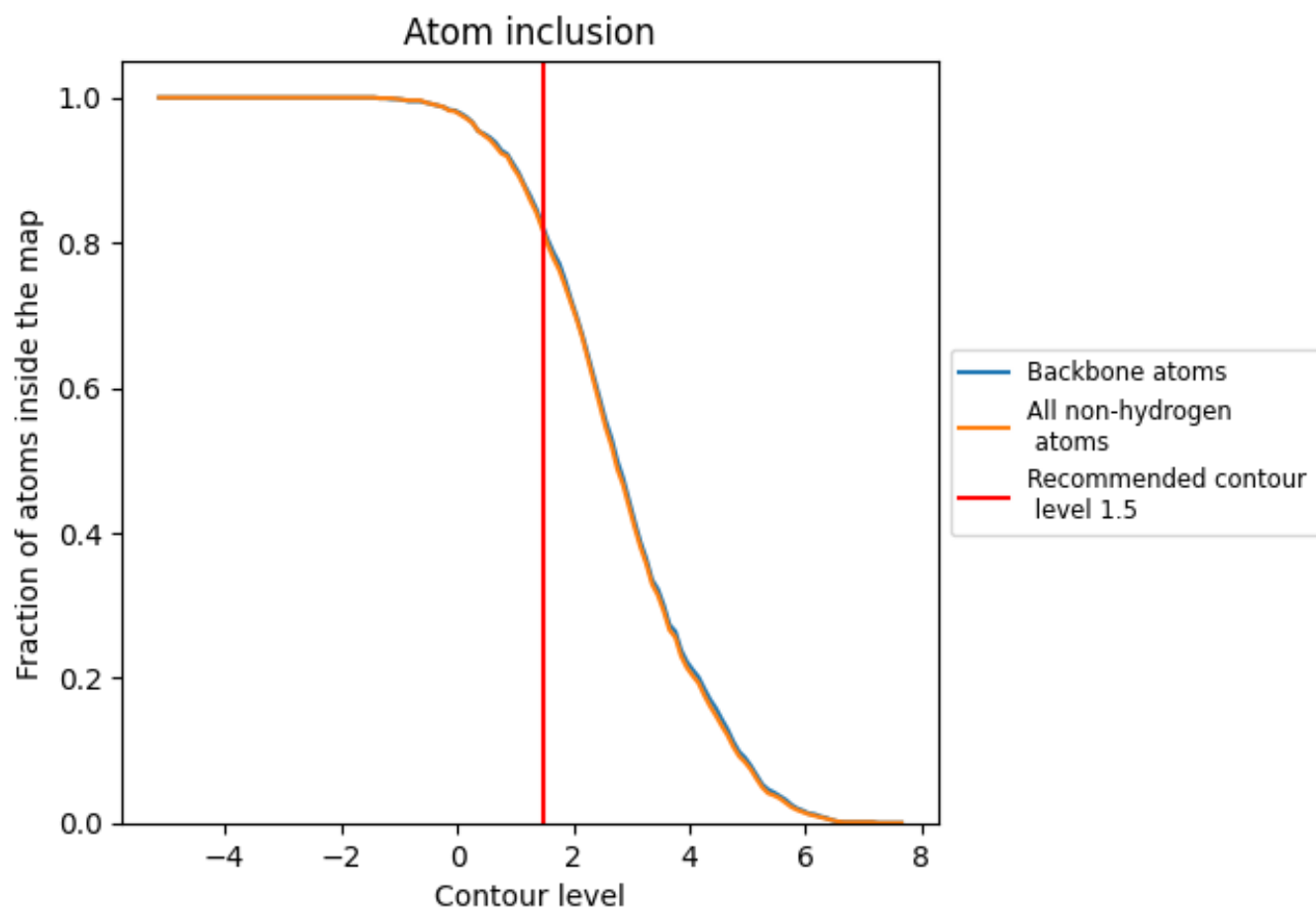
The images above show the model with each residue coloured according to its Q-score. This shows their resolvability in the map with higher Q-score values reflecting better resolvability. Please note: Q-score is calculating the resolvability of atoms, and thus high values are only expected at resolutions at which atoms can be resolved. Low Q-score values may therefore be expected for many entries.

9.3 Atom inclusion mapped to coordinate model [i](#)



The images above show the model with each residue coloured according to its atom inclusion. This shows to what extent they are inside the map at the recommended contour level (1.5).









9.4 Atom inclusion [i](#)



At the recommended contour level, 82% of all backbone atoms, 81% of all non-hydrogen atoms, are inside the map.

9.5 Map-model fit summary [i](#)

The table lists the average atom inclusion at the recommended contour level (1.5) and Q-score for the entire model and for each chain.

Chain	Atom inclusion	Q-score
All	 0.8120	 0.0960
A	 0.8400	 0.1020
B	 0.8510	 0.1030
C	 0.7250	 0.0770

