



# Full wwPDB X-ray Structure Validation Report ⓘ

Jun 18, 2024 – 09:37 AM EDT

PDB ID : 4EQW  
Title : Crystal Structure of the Y361F, Y419F Mutant of Staphylococcus aureus CoADR  
Authors : Edwards, J.S.; Wallace, B.D.; Wallen, J.R.; Claiborne, A.; Redinbo, M.R.  
Deposited on : 2012-04-19  
Resolution : 1.50 Å(reported)

This is a Full wwPDB X-ray Structure Validation Report for a publicly released PDB entry.

We welcome your comments at [validation@mail.wwpdb.org](mailto:validation@mail.wwpdb.org)

A user guide is available at

<https://www.wwpdb.org/validation/2017/XrayValidationReportHelp>

with specific help available everywhere you see the ⓘ symbol.

The types of validation reports are described at

<http://www.wwpdb.org/validation/2017/FAQs#types>.

---

The following versions of software and data (see [references ⓘ](#)) were used in the production of this report:

MolProbity : 4.02b-467  
Mogul : 2022.3.0, CSD as543be (2022)  
Xtriage (Phenix) : 1.20.1  
EDS : 2.37.1  
buster-report : 1.1.7 (2018)  
Percentile statistics : 20191225.v01 (using entries in the PDB archive December 25th 2019)  
Refmac : 5.8.0158  
CCP4 : 7.0.044 (Gargrove)  
Ideal geometry (proteins) : Engh & Huber (2001)  
Ideal geometry (DNA, RNA) : Parkinson et al. (1996)  
Validation Pipeline (wwPDB-VP) : 2.37.1

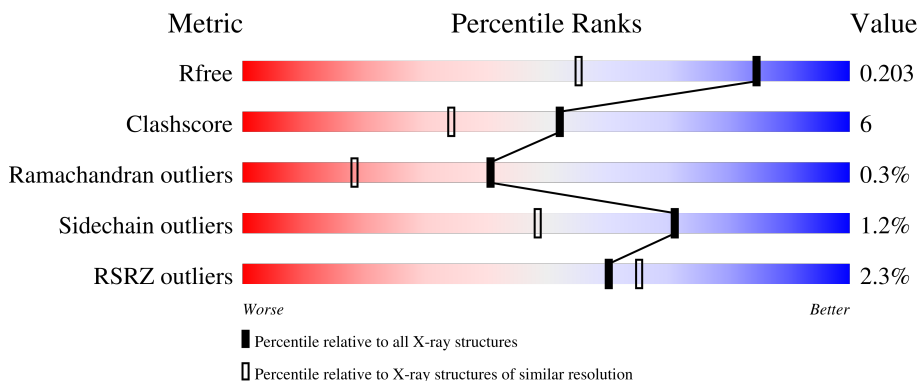
# 1 Overall quality at a glance

The following experimental techniques were used to determine the structure:

*X-RAY DIFFRACTION*

The reported resolution of this entry is 1.50 Å.

Percentile scores (ranging between 0-100) for global validation metrics of the entry are shown in the following graphic. The table shows the number of entries on which the scores are based.



Metric	Whole archive (#Entries)	Similar resolution (#Entries, resolution range(Å))
$R_{free}$	130704	2936 (1.50-1.50)
Clashscore	141614	3144 (1.50-1.50)
Ramachandran outliers	138981	3066 (1.50-1.50)
Sidechain outliers	138945	3064 (1.50-1.50)
RSRZ outliers	127900	2884 (1.50-1.50)

The table below summarises the geometric issues observed across the polymeric chains and their fit to the electron density. The red, orange, yellow and green segments of the lower bar indicate the fraction of residues that contain outliers for  $\geq 3$ , 2, 1 and 0 types of geometric quality criteria respectively. A grey segment represents the fraction of residues that are not modelled. The numeric value for each fraction is indicated below the corresponding segment, with a dot representing fractions  $\leq 5\%$ . The upper red bar (where present) indicates the fraction of residues that have poor fit to the electron density. The numeric value is given above the bar.

Mol	Chain	Length	Quality of chain
1	A	437	
1	B	437	

## 2 Entry composition [i](#)

There are 6 unique types of molecules in this entry. The entry contains 8499 atoms, of which 0 are hydrogens and 0 are deuteriums.

In the tables below, the ZeroOcc column contains the number of atoms modelled with zero occupancy, the AltConf column contains the number of residues with at least one atom in alternate conformation and the Trace column contains the number of residues modelled with at most 2 atoms.

- Molecule 1 is a protein called Coenzyme A disulfide reductase.

Mol	Chain	Residues	Atoms					ZeroOcc	AltConf	Trace
			Total	C	N	O	S			
1	A	437	3498	2222	591	672	13	0	9	0
1	B	437	3505	2228	593	671	13	0	10	0

There are 4 discrepancies between the modelled and reference sequences:

Chain	Residue	Modelled	Actual	Comment	Reference
A	361	PHE	TYR	engineered mutation	UNP Q2FIA5
A	419	PHE	TYR	engineered mutation	UNP Q2FIA5
B	361	PHE	TYR	engineered mutation	UNP Q2FIA5
B	419	PHE	TYR	engineered mutation	UNP Q2FIA5

- Molecule 2 is MAGNESIUM ION (three-letter code: MG) (formula: Mg).

Mol	Chain	Residues	Atoms		ZeroOcc	AltConf
2	A	1	Total 1	Mg 1	0	0
2	B	2	Total 2	Mg 2	0	0

- Molecule 3 is CHLORIDE ION (three-letter code: CL) (formula: Cl).

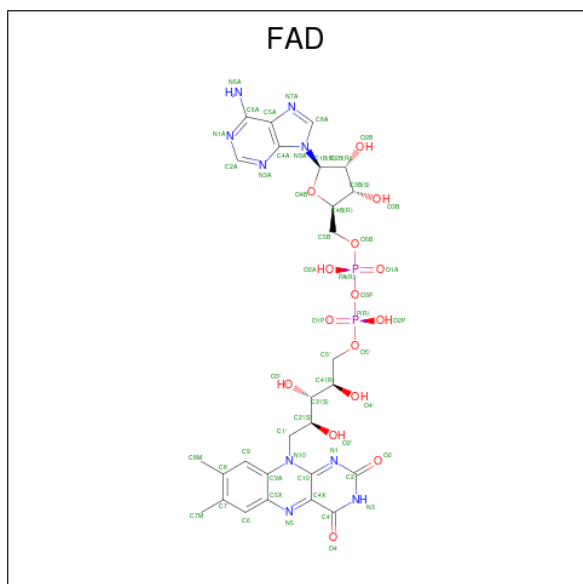
Mol	Chain	Residues	Atoms		ZeroOcc	AltConf
3	A	3	Total 3	Cl 3	0	0
3	B	3	Total 3	Cl 3	0	0

- Molecule 4 is COENZYME A (three-letter code: COA) (formula: C<sub>21</sub>H<sub>36</sub>N<sub>7</sub>O<sub>16</sub>P<sub>3</sub>S).



Mol	Chain	Residues	Atoms					ZeroOcc	AltConf	
			Total	C	N	O	P			S
4	A	1	48	21	7	16	3	1	0	0
4	B	1	48	21	7	16	3	1	0	0

- Molecule 5 is FLAVIN-ADENINE DINUCLEOTIDE (three-letter code: FAD) (formula:  $C_{27}H_{33}N_9O_{15}P_2$ ).



Mol	Chain	Residues	Atoms					ZeroOcc	AltConf
			Total	C	N	O	P		
5	A	1	53	27	9	15	2	0	0

*Continued on next page...*

*Continued from previous page...*

Mol	Chain	Residues	Atoms					ZeroOcc	AltConf
			Total	C	N	O	P		
5	B	1	53	27	9	15	2	0	0

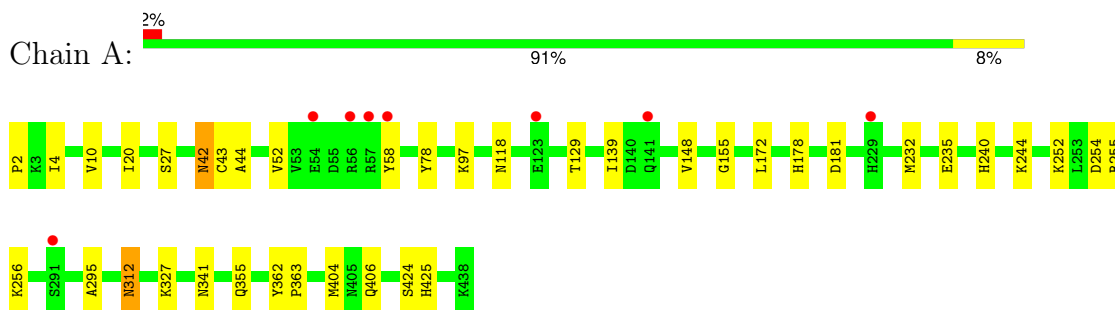
- Molecule 6 is water.

Mol	Chain	Residues	Atoms		ZeroOcc	AltConf
6	A	678	Total	O	0	0
			678	678		
6	B	607	Total	O	0	0
			607	607		

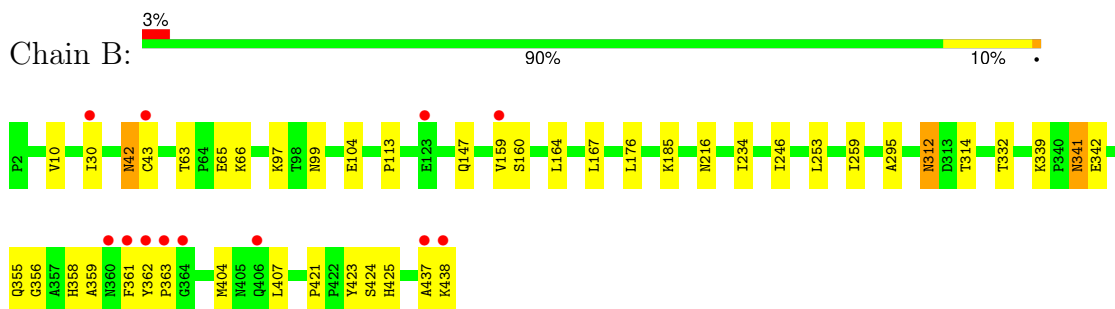
### 3 Residue-property plots [i](#)

These plots are drawn for all protein, RNA, DNA and oligosaccharide chains in the entry. The first graphic for a chain summarises the proportions of the various outlier classes displayed in the second graphic. The second graphic shows the sequence view annotated by issues in geometry and electron density. Residues are color-coded according to the number of geometric quality criteria for which they contain at least one outlier: green = 0, yellow = 1, orange = 2 and red = 3 or more. A red dot above a residue indicates a poor fit to the electron density ( $RSRZ > 2$ ). Stretches of 2 or more consecutive residues without any outlier are shown as a green connector. Residues present in the sample, but not in the model, are shown in grey.

- Molecule 1: Coenzyme A disulfide reductase



- Molecule 1: Coenzyme A disulfide reductase



## 4 Data and refinement statistics

Property	Value	Source
Space group	P 1 21 1	Depositor
Cell constants a, b, c, $\alpha$ , $\beta$ , $\gamma$	76.20Å 65.52Å 94.71Å 90.00° 104.78° 90.00°	Depositor
Resolution (Å)	33.12 – 1.50 53.29 – 1.50	Depositor EDS
% Data completeness (in resolution range)	96.6 (33.12-1.50) 97.1 (53.29-1.50)	Depositor EDS
$R_{merge}$	0.06	Depositor
$R_{sym}$	(Not available)	Depositor
$\langle I/\sigma(I) \rangle$ <sup>1</sup>	4.39 (at 1.50Å)	Xtrriage
Refinement program	PHENIX ?	Depositor
R, $R_{free}$	0.180 , 0.207 0.177 , 0.203	Depositor DCC
$R_{free}$ test set	13455 reflections (9.60%)	wwPDB-VP
Wilson B-factor (Å <sup>2</sup> )	17.1	Xtrriage
Anisotropy	0.420	Xtrriage
Bulk solvent $k_{sol}$ (e/Å <sup>3</sup> ), $B_{sol}$ (Å <sup>2</sup> )	0.38 , 45.7	EDS
L-test for twinning <sup>2</sup>	$\langle  L  \rangle = 0.50$ , $\langle L^2 \rangle = 0.33$	Xtrriage
Estimated twinning fraction	No twinning to report.	Xtrriage
$F_o, F_c$ correlation	0.96	EDS
Total number of atoms	8499	wwPDB-VP
Average B, all atoms (Å <sup>2</sup> )	21.0	wwPDB-VP

Xtrriage's analysis on translational NCS is as follows: *The largest off-origin peak in the Patterson function is 5.22% of the height of the origin peak. No significant pseudotranslation is detected.*

<sup>1</sup>Intensities estimated from amplitudes.

<sup>2</sup>Theoretical values of  $\langle |L| \rangle$ ,  $\langle L^2 \rangle$  for acentric reflections are 0.5, 0.333 respectively for untwinned datasets, and 0.375, 0.2 for perfectly twinned datasets.

## 5 Model quality [i](#)

### 5.1 Standard geometry [i](#)

Bond lengths and bond angles in the following residue types are not validated in this section: COA, MG, CL, FAD

The Z score for a bond length (or angle) is the number of standard deviations the observed value is removed from the expected value. A bond length (or angle) with  $|Z| > 5$  is considered an outlier worth inspection. RMSZ is the root-mean-square of all Z scores of the bond lengths (or angles).

Mol	Chain	Bond lengths		Bond angles	
		RMSZ	# Z  >5	RMSZ	# Z  >5
1	A	0.30	0/3603	0.49	0/4877
1	B	0.29	0/3614	0.48	0/4892
All	All	0.29	0/7217	0.49	0/9769

There are no bond length outliers.

There are no bond angle outliers.

There are no chirality outliers.

There are no planarity outliers.

### 5.2 Too-close contacts [i](#)

In the following table, the Non-H and H(model) columns list the number of non-hydrogen atoms and hydrogen atoms in the chain respectively. The H(added) column lists the number of hydrogen atoms added and optimized by MolProbity. The Clashes column lists the number of clashes within the asymmetric unit, whereas Symm-Clashes lists symmetry-related clashes.

Mol	Chain	Non-H	H(model)	H(added)	Clashes	Symm-Clashes
1	A	3498	0	3456	37	0
1	B	3505	0	3468	45	0
2	A	1	0	0	0	0
2	B	2	0	0	0	0
3	A	3	0	0	1	0
3	B	3	0	0	1	0
4	A	48	0	32	7	0
4	B	48	0	32	4	0
5	A	53	0	31	1	0
5	B	53	0	31	2	0
6	A	678	0	0	6	0

*Continued on next page...*



*Continued from previous page...*

Mol	Chain	Non-H	H(model)	H(added)	Clashes	Symm-Clashes
6	B	607	0	0	8	0
All	All	8499	0	7050	77	0

The all-atom clashscore is defined as the number of clashes found per 1000 atoms (including hydrogen atoms). The all-atom clashscore for this structure is 6.

All (77) close contacts within the same asymmetric unit are listed below, sorted by their clash magnitude.

Atom-1	Atom-2	Interatomic distance (Å)	Clash overlap (Å)
1:A:43[B]:CYS:SG	3:A:502:CL:CL	2.33	1.22
1:B:43[B]:CYS:SG	3:B:3001:CL:CL	2.56	1.01
1:B:30[A]:ILE:HD11	1:B:104:GLU:HG2	1.67	0.74
1:B:356:GLY:O	1:B:425[B]:HIS:HE1	1.71	0.74
1:A:129:THR:HG22	1:A:235[A]:GLU:HG3	1.70	0.74
1:A:2:PRO:N	1:A:27:SER:HG	1.92	0.67
1:B:147:GLN:HG3	6:B:3705:HOH:O	1.97	0.64
1:B:42:ASN:ND2	1:B:42:ASN:H	1.96	0.64
1:B:65[A]:GLU:HG3	6:B:3152:HOH:O	1.98	0.62
1:B:355:GLN:HG3	6:B:3363:HOH:O	1.99	0.62
1:A:43[B]:CYS:HB3	4:A:505:COA:HS1	1.65	0.62
1:B:30[A]:ILE:CD1	1:B:104:GLU:HG2	2.29	0.62
1:B:97:LYS:HG3	6:B:3381:HOH:O	2.01	0.60
1:B:159:VAL:HG22	6:B:3172:HOH:O	2.01	0.60
1:A:118:ASN:OD1	1:A:240:HIS:HD2	1.85	0.60
1:B:295:ALA:CB	4:B:3006:COA:H22	2.32	0.59
1:A:43[A]:CYS:SG	5:A:506:FAD:C4X	2.90	0.59
1:A:240:HIS:HE1	6:A:854:HOH:O	1.86	0.58
1:B:43[A]:CYS:SG	5:B:3007:FAD:C4X	2.91	0.58
1:B:42:ASN:H	1:B:42:ASN:HD22	1.48	0.58
1:B:312:ASN:C	1:B:312:ASN:HD22	2.10	0.55
1:A:424:SER:O	1:A:425[B]:HIS:HD2	1.90	0.54
1:A:252:LYS:HZ3	1:A:254:ASP:HA	1.73	0.54
1:B:159:VAL:HG23	1:B:160:SER:N	2.23	0.54
1:B:424:SER:O	1:B:425[A]:HIS:HD2	1.93	0.52
1:B:312:ASN:ND2	1:B:314:THR:H	2.08	0.52
1:A:355:GLN:HG3	6:A:731:HOH:O	2.09	0.52
1:A:4[A]:ILE:HD13	1:A:20:ILE:HD13	1.93	0.51
1:B:42:ASN:ND2	4:B:3006:COA:H61	2.26	0.50
1:A:252:LYS:C	1:A:252:LYS:HD3	2.33	0.49
1:A:312:ASN:HD22	1:A:312:ASN:C	2.16	0.49
1:A:406:GLN:HG3	6:A:922:HOH:O	2.12	0.49

*Continued on next page...*

Continued from previous page...

Atom-1	Atom-2	Interatomic distance (Å)	Clash overlap (Å)
1:A:129:THR:CG2	1:A:235[A]:GLU:HG3	2.42	0.48
1:B:312:ASN:HD22	1:B:314:THR:H	1.61	0.48
1:A:58:TYR:CD2	1:B:361:PHE:HA	2.49	0.48
1:A:244:LYS:HG2	6:A:1185:HOH:O	2.14	0.48
4:A:505:COA:O1A	4:A:505:COA:H121	2.13	0.47
1:B:253:LEU:HD23	1:B:259:ILE:HG12	1.97	0.47
1:A:295:ALA:CB	4:A:505:COA:H22	2.45	0.46
1:B:159:VAL:HG23	1:B:160:SER:H	1.80	0.46
1:A:43[A]:CYS:HG	4:A:505:COA:HS1	0.48	0.46
6:A:831:HOH:O	1:B:404:MET:HG3	2.15	0.46
1:B:332:THR:HG21	6:B:3666:HOH:O	2.15	0.46
1:A:58:TYR:HB3	1:B:361:PHE:HB2	1.97	0.46
1:A:43[A]:CYS:SG	4:A:505:COA:C2P	3.04	0.45
1:B:43[A]:CYS:SG	4:B:3006:COA:C2P	3.05	0.45
1:A:155:GLY:HA2	1:A:178:HIS:HD2	1.82	0.45
1:A:42:ASN:HB2	4:A:505:COA:S1P	2.56	0.45
1:B:438:LYS:HB2	6:B:3698:HOH:O	2.16	0.45
1:B:339:LYS:HB2	1:B:341:ASN:ND2	2.31	0.45
1:B:167:LEU:HD11	1:B:234[A]:ILE:HD12	1.98	0.45
1:B:63:THR:H	1:B:66:LYS:HE3	1.81	0.45
1:B:359:ALA:HB3	1:B:362:TYR:HB2	1.98	0.44
1:A:355:GLN:HE21	1:A:425[B]:HIS:CE1	2.34	0.44
1:B:113:PRO:O	5:B:3007:FAD:H8A	2.17	0.44
1:B:341:ASN:ND2	1:B:342:GLU:HG3	2.33	0.44
1:A:44:ALA:HB2	1:B:361:PHE:CZ	2.53	0.44
1:A:404:MET:HE2	1:B:407:LEU:HD11	2.00	0.43
1:B:362:TYR:HA	1:B:363:PRO:HD3	1.78	0.43
1:A:327:LYS:HB2	1:B:423:TYR:OH	2.19	0.43
1:B:164:LEU:CD1	1:B:176:LEU:HB2	2.48	0.43
1:B:295:ALA:HB2	4:B:3006:COA:H22	2.00	0.43
1:A:252:LYS:NZ	1:A:254:ASP:HA	2.34	0.43
1:A:148:VAL:O	1:A:172:LEU:HD22	2.19	0.43
1:B:185:LYS:HG2	6:B:3285:HOH:O	2.18	0.42
1:A:52:VAL:HG13	1:B:363:PRO:HG2	2.01	0.42
1:A:78:TYR:CD1	1:A:97:LYS:HE3	2.54	0.42
1:A:178:HIS:HE1	6:A:802:HOH:O	2.03	0.42
1:A:255:ARG:NH1	1:A:256:LYS:HE3	2.36	0.41
1:A:362:TYR:HA	1:A:363:PRO:HD3	1.88	0.41
1:A:139:ILE:HG23	1:A:232[B]:MET:HE1	2.03	0.41
1:B:246:ILE:HD13	1:B:259:ILE:HD11	2.02	0.41
1:A:255:ARG:HH12	1:A:256:LYS:HE3	1.86	0.41

Continued on next page...

*Continued from previous page...*

Atom-1	Atom-2	Interatomic distance (Å)	Clash overlap (Å)
1:A:295:ALA:HB2	4:A:505:COA:H22	2.03	0.40
1:B:164:LEU:C	1:B:164:LEU:HD23	2.41	0.40
1:B:358:HIS:HB2	1:B:421:PRO:O	2.21	0.40

There are no symmetry-related clashes.

## 5.3 Torsion angles [i](#)

### 5.3.1 Protein backbone [i](#)

In the following table, the Percentiles column shows the percent Ramachandran outliers of the chain as a percentile score with respect to all X-ray entries followed by that with respect to entries of similar resolution.

The Analysed column shows the number of residues for which the backbone conformation was analysed, and the total number of residues.

Mol	Chain	Analysed	Favoured	Allowed	Outliers	Percentiles
1	A	444/437 (102%)	432 (97%)	11 (2%)	1 (0%)	47 23
1	B	445/437 (102%)	435 (98%)	8 (2%)	2 (0%)	34 13
All	All	889/874 (102%)	867 (98%)	19 (2%)	3 (0%)	41 18

All (3) Ramachandran outliers are listed below:

Mol	Chain	Res	Type
1	B	437	ALA
1	A	10	VAL
1	B	10	VAL

### 5.3.2 Protein sidechains [i](#)

In the following table, the Percentiles column shows the percent sidechain outliers of the chain as a percentile score with respect to all X-ray entries followed by that with respect to entries of similar resolution.

The Analysed column shows the number of residues for which the sidechain conformation was analysed, and the total number of residues.

*Continued on next page...*

*Continued from previous page...*

Mol	Chain	Analysed	Rotameric	Outliers	Percentiles	
1	A	385/376 (102%)	381 (99%)	4 (1%)	76	57
1	B	386/376 (103%)	381 (99%)	5 (1%)	69	44
All	All	771/752 (102%)	762 (99%)	9 (1%)	71	48

All (9) residues with a non-rotameric sidechain are listed below:

Mol	Chain	Res	Type
1	A	42	ASN
1	A	181	ASP
1	A	312	ASN
1	A	341	ASN
1	B	42	ASN
1	B	99	ASN
1	B	216	ASN
1	B	312	ASN
1	B	341	ASN

Sometimes sidechains can be flipped to improve hydrogen bonding and reduce clashes. All (13) such sidechains are listed below:

Mol	Chain	Res	Type
1	A	178	HIS
1	A	240	HIS
1	A	312	ASN
1	A	341	ASN
1	A	355	GLN
1	B	42	ASN
1	B	89	GLN
1	B	99	ASN
1	B	209	ASN
1	B	216	ASN
1	B	242	ASN
1	B	312	ASN
1	B	341	ASN

### 5.3.3 RNA

There are no RNA molecules in this entry.

## 5.4 Non-standard residues in protein, DNA, RNA chains [i](#)

There are no non-standard protein/DNA/RNA residues in this entry.

## 5.5 Carbohydrates [i](#)

There are no monosaccharides in this entry.

## 5.6 Ligand geometry [i](#)

Of 13 ligands modelled in this entry, 9 are monoatomic - leaving 4 for Mogul analysis.

In the following table, the Counts columns list the number of bonds (or angles) for which Mogul statistics could be retrieved, the number of bonds (or angles) that are observed in the model and the number of bonds (or angles) that are defined in the Chemical Component Dictionary. The Link column lists molecule types, if any, to which the group is linked. The Z score for a bond length (or angle) is the number of standard deviations the observed value is removed from the expected value. A bond length (or angle) with  $|Z| > 2$  is considered an outlier worth inspection. RMSZ is the root-mean-square of all Z scores of the bond lengths (or angles).

Mol	Type	Chain	Res	Link	Bond lengths			Bond angles		
					Counts	RMSZ	# Z  > 2	Counts	RMSZ	# Z  > 2
4	COA	B	3006	1	43,50,50	3.25	21 (48%)	56,75,75	1.49	7 (12%)
4	COA	A	505	1	43,50,50	3.22	22 (51%)	56,75,75	1.48	8 (14%)
5	FAD	B	3007	-	54,58,58	3.14	19 (35%)	71,89,89	1.61	14 (19%)
5	FAD	A	506	-	54,58,58	3.12	21 (38%)	71,89,89	1.54	9 (12%)

In the following table, the Chirals column lists the number of chiral outliers, the number of chiral centers analysed, the number of these observed in the model and the number defined in the Chemical Component Dictionary. Similar counts are reported in the Torsion and Rings columns. '-' means no outliers of that kind were identified.

Mol	Type	Chain	Res	Link	Chirals	Torsions	Rings
4	COA	B	3006	1	-	13/44/64/64	0/3/3/3
4	COA	A	505	1	-	7/44/64/64	0/3/3/3
5	FAD	B	3007	-	-	2/30/50/50	0/6/6/6
5	FAD	A	506	-	-	2/30/50/50	0/6/6/6

All (83) bond length outliers are listed below:

Mol	Chain	Res	Type	Atoms	Z	Observed(Å)	Ideal(Å)
5	A	506	FAD	O4-C4	8.57	1.39	1.23

*Continued on next page...*

*Continued from previous page...*

Mol	Chain	Res	Type	Atoms	Z	Observed(Å)	Ideal(Å)
5	B	3007	FAD	O4-C4	8.48	1.39	1.23
5	B	3007	FAD	C2A-N3A	8.32	1.45	1.32
4	A	505	COA	P2A-O3A	8.08	1.68	1.59
5	A	506	FAD	C2A-N3A	7.99	1.44	1.32
4	B	3006	COA	P2A-O3A	7.91	1.68	1.59
4	B	3006	COA	P1A-O3A	7.80	1.67	1.59
4	A	505	COA	P1A-O3A	7.63	1.67	1.59
5	A	506	FAD	C8A-N7A	7.12	1.47	1.34
5	B	3007	FAD	C9-C8	6.80	1.48	1.39
5	A	506	FAD	C9-C8	6.60	1.48	1.39
5	B	3007	FAD	C8A-N7A	6.55	1.46	1.34
4	A	505	COA	C9P-N8P	6.22	1.48	1.33
4	B	3006	COA	C2A-N3A	6.16	1.41	1.32
4	B	3006	COA	C9P-N8P	6.06	1.47	1.33
4	A	505	COA	C2A-N3A	5.84	1.41	1.32
5	A	506	FAD	PA-O3P	5.68	1.65	1.59
5	B	3007	FAD	P-O3P	5.67	1.65	1.59
5	B	3007	FAD	C6-C5X	5.62	1.48	1.40
5	B	3007	FAD	PA-O3P	5.56	1.65	1.59
4	B	3006	COA	C4A-N3A	5.51	1.43	1.35
5	A	506	FAD	C6-C5X	5.47	1.48	1.40
4	B	3006	COA	C8A-N7A	5.34	1.44	1.34
4	A	505	COA	C8A-N7A	5.31	1.44	1.34
4	A	505	COA	C4A-N3A	5.25	1.42	1.35
4	B	3006	COA	C5P-N4P	5.15	1.45	1.33
5	A	506	FAD	P-O3P	5.13	1.65	1.59
4	A	505	COA	C5P-N4P	4.86	1.44	1.33
4	B	3006	COA	P3B-O7A	4.82	1.65	1.50
4	A	505	COA	P3B-O7A	4.78	1.65	1.50
5	A	506	FAD	C4A-N3A	4.76	1.42	1.35
5	B	3007	FAD	C10-N1	4.62	1.42	1.33
5	A	506	FAD	C10-N1	4.47	1.42	1.33
5	B	3007	FAD	C2A-N1A	4.38	1.41	1.33
4	A	505	COA	O4B-C1B	4.36	1.46	1.40
5	B	3007	FAD	C4A-N3A	4.29	1.41	1.35
4	B	3006	COA	P2A-O4A	4.27	1.65	1.50
4	B	3006	COA	O4B-C1B	4.26	1.46	1.40
4	B	3006	COA	P1A-O1A	4.20	1.65	1.50
4	A	505	COA	P1A-O1A	4.18	1.65	1.50
4	A	505	COA	P2A-O4A	4.16	1.65	1.50
5	A	506	FAD	C2A-N1A	4.01	1.41	1.33
5	B	3007	FAD	C4X-N5	3.90	1.39	1.30

*Continued on next page...*

*Continued from previous page...*

Mol	Chain	Res	Type	Atoms	Z	Observed(Å)	Ideal(Å)
5	A	506	FAD	C9-C9A	3.84	1.45	1.39
5	B	3007	FAD	C6-C7	3.84	1.44	1.39
5	B	3007	FAD	C9-C9A	3.81	1.45	1.39
5	A	506	FAD	C6-C7	3.77	1.44	1.39
5	A	506	FAD	C4X-N5	3.76	1.38	1.30
4	B	3006	COA	P3B-O3B	3.73	1.66	1.59
5	B	3007	FAD	PA-O1A	3.68	1.63	1.50
5	B	3007	FAD	C6A-N6A	3.64	1.47	1.34
5	A	506	FAD	C6A-N6A	3.61	1.47	1.34
4	A	505	COA	P3B-O3B	3.48	1.65	1.59
5	A	506	FAD	PA-O1A	3.46	1.62	1.50
5	A	506	FAD	P-O1P	3.36	1.62	1.50
4	B	3006	COA	C6A-N6A	3.33	1.46	1.34
5	B	3007	FAD	P-O1P	3.33	1.62	1.50
4	A	505	COA	C6A-N6A	3.29	1.45	1.34
4	A	505	COA	P3B-O8A	3.11	1.66	1.54
4	B	3006	COA	P3B-O8A	3.06	1.66	1.54
5	A	506	FAD	C2-N1	2.87	1.43	1.36
5	B	3007	FAD	C2-N1	2.77	1.42	1.36
5	A	506	FAD	O2-C2	-2.69	1.19	1.24
5	B	3007	FAD	O2-C2	-2.65	1.19	1.24
4	B	3006	COA	O4B-C4B	2.63	1.50	1.45
4	A	505	COA	O4B-C4B	2.54	1.50	1.45
5	A	506	FAD	C5'-C4'	2.30	1.54	1.51
4	A	505	COA	P3B-O9A	-2.29	1.46	1.54
4	B	3006	COA	P3B-O9A	-2.28	1.46	1.54
4	A	505	COA	C2B-C3B	-2.26	1.48	1.53
4	B	3006	COA	P2A-O6A	2.23	1.68	1.59
4	A	505	COA	P2A-O6A	2.22	1.68	1.59
4	B	3006	COA	CCP-CBP	2.17	1.56	1.52
4	A	505	COA	O5P-C5P	-2.17	1.19	1.23
5	A	506	FAD	C9A-N10	-2.17	1.37	1.41
5	B	3007	FAD	C7M-C7	2.13	1.55	1.51
4	B	3006	COA	O9P-C9P	-2.10	1.19	1.23
4	B	3006	COA	O5P-C5P	-2.10	1.19	1.23
4	A	505	COA	CCP-CBP	2.09	1.56	1.52
4	A	505	COA	O9P-C9P	-2.09	1.19	1.23
4	B	3006	COA	C2B-C3B	-2.02	1.48	1.53
5	A	506	FAD	P-O2P	-2.01	1.46	1.55
4	A	505	COA	P1A-O5B	2.01	1.67	1.59

All (38) bond angle outliers are listed below:

Mol	Chain	Res	Type	Atoms	Z	Observed(°)	Ideal(°)
5	A	506	FAD	N3A-C2A-N1A	-6.99	119.19	128.67
4	B	3006	COA	N3A-C2A-N1A	-6.34	120.07	128.67
4	A	505	COA	N3A-C2A-N1A	-6.28	120.14	128.67
5	B	3007	FAD	N3A-C2A-N1A	-6.16	120.31	128.67
5	B	3007	FAD	C4B-O4B-C1B	-5.43	104.95	109.92
5	A	506	FAD	C4B-O4B-C1B	-4.44	105.86	109.92
4	B	3006	COA	O6A-CCP-CBP	3.87	116.77	110.55
5	B	3007	FAD	O4B-C1B-N9A	-3.20	104.50	108.75
4	B	3006	COA	C3B-C2B-C1B	3.09	106.69	99.89
4	A	505	COA	C4B-O4B-C1B	-3.09	107.10	109.92
5	B	3007	FAD	C5X-C9A-N10	2.97	120.65	117.97
4	A	505	COA	O6A-CCP-CBP	2.75	114.97	110.55
4	A	505	COA	P3B-O3B-C3B	-2.61	116.46	123.43
5	A	506	FAD	C4X-C10-N10	2.60	120.21	116.48
5	B	3007	FAD	C1B-N9A-C4A	-2.60	122.08	126.64
5	B	3007	FAD	O4-C4-C4X	-2.59	119.70	126.53
4	A	505	COA	C3P-N4P-C5P	-2.58	118.02	122.82
5	A	506	FAD	O3'-C3'-C4'	2.57	114.76	108.93
5	B	3007	FAD	C4X-C4-N3	2.54	119.72	113.25
4	B	3006	COA	O2B-C2B-C3B	2.46	118.08	111.19
5	B	3007	FAD	C4-N3-C2	-2.44	121.31	125.64
4	A	505	COA	O5P-C5P-N4P	-2.42	118.28	123.03
5	B	3007	FAD	C9A-C5X-N5	-2.35	119.97	122.45
5	A	506	FAD	O4-C4-C4X	-2.33	120.38	126.53
5	B	3007	FAD	O2'-C2'-C3'	2.31	114.65	109.25
4	A	505	COA	C7P-C6P-C5P	2.29	116.21	112.39
4	B	3006	COA	O5B-C5B-C4B	2.28	116.75	108.99
5	A	506	FAD	C4-N3-C2	-2.27	121.60	125.64
4	B	3006	COA	C4B-O4B-C1B	-2.27	107.84	109.92
5	A	506	FAD	C4X-C4-N3	2.25	118.98	113.25
5	B	3007	FAD	C4X-C10-N10	2.19	119.62	116.48
5	B	3007	FAD	O3'-C3'-C2'	2.15	113.82	108.93
5	B	3007	FAD	O3'-C3'-C4'	2.14	113.78	108.93
5	A	506	FAD	C10-C4X-N5	-2.11	120.49	124.81
5	B	3007	FAD	O2A-PA-O3P	2.02	112.74	107.27
4	B	3006	COA	C7P-C6P-C5P	2.02	115.75	112.39
5	A	506	FAD	O4B-C1B-N9A	-2.01	106.08	108.75
4	A	505	COA	O2B-C2B-C3B	2.01	116.81	111.19

There are no chirality outliers.

All (24) torsion outliers are listed below:



Mol	Chain	Res	Type	Atoms
4	A	505	COA	P1A-O3A-P2A-O6A
4	A	505	COA	CCP-O6A-P2A-O4A
4	A	505	COA	C5P-C6P-C7P-N8P
4	A	505	COA	S1P-C2P-C3P-N4P
4	B	3006	COA	C2B-C3B-O3B-P3B
4	B	3006	COA	CDP-CBP-CCP-O6A
4	B	3006	COA	CEP-CBP-CCP-O6A
4	B	3006	COA	CAP-CBP-CCP-O6A
4	B	3006	COA	S1P-C2P-C3P-N4P
4	B	3006	COA	C4B-C3B-O3B-P3B
4	B	3006	COA	C5P-C6P-C7P-N8P
4	A	505	COA	O5P-C5P-N4P-C3P
4	A	505	COA	CCP-O6A-P2A-O3A
4	B	3006	COA	C5B-O5B-P1A-O1A
4	B	3006	COA	C5B-O5B-P1A-O2A
4	B	3006	COA	C5B-O5B-P1A-O3A
5	A	506	FAD	C5B-O5B-PA-O1A
5	B	3007	FAD	C5B-O5B-PA-O1A
4	B	3006	COA	P2A-O3A-P1A-O2A
5	A	506	FAD	O4B-C4B-C5B-O5B
5	B	3007	FAD	O4B-C4B-C5B-O5B
4	B	3006	COA	P2A-O3A-P1A-O1A
4	A	505	COA	C3B-O3B-P3B-O8A
4	B	3006	COA	CBP-CCP-O6A-P2A

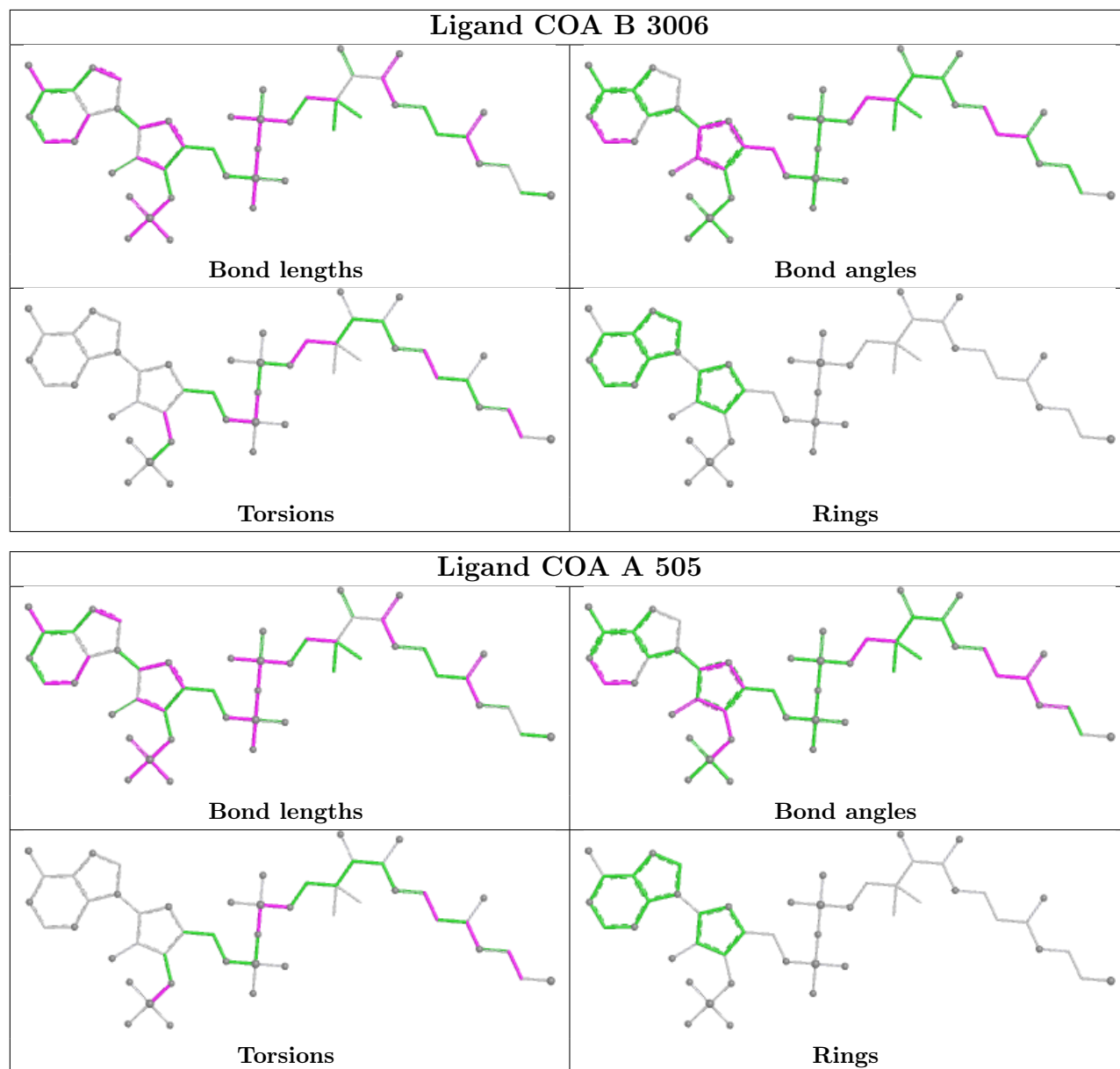
There are no ring outliers.

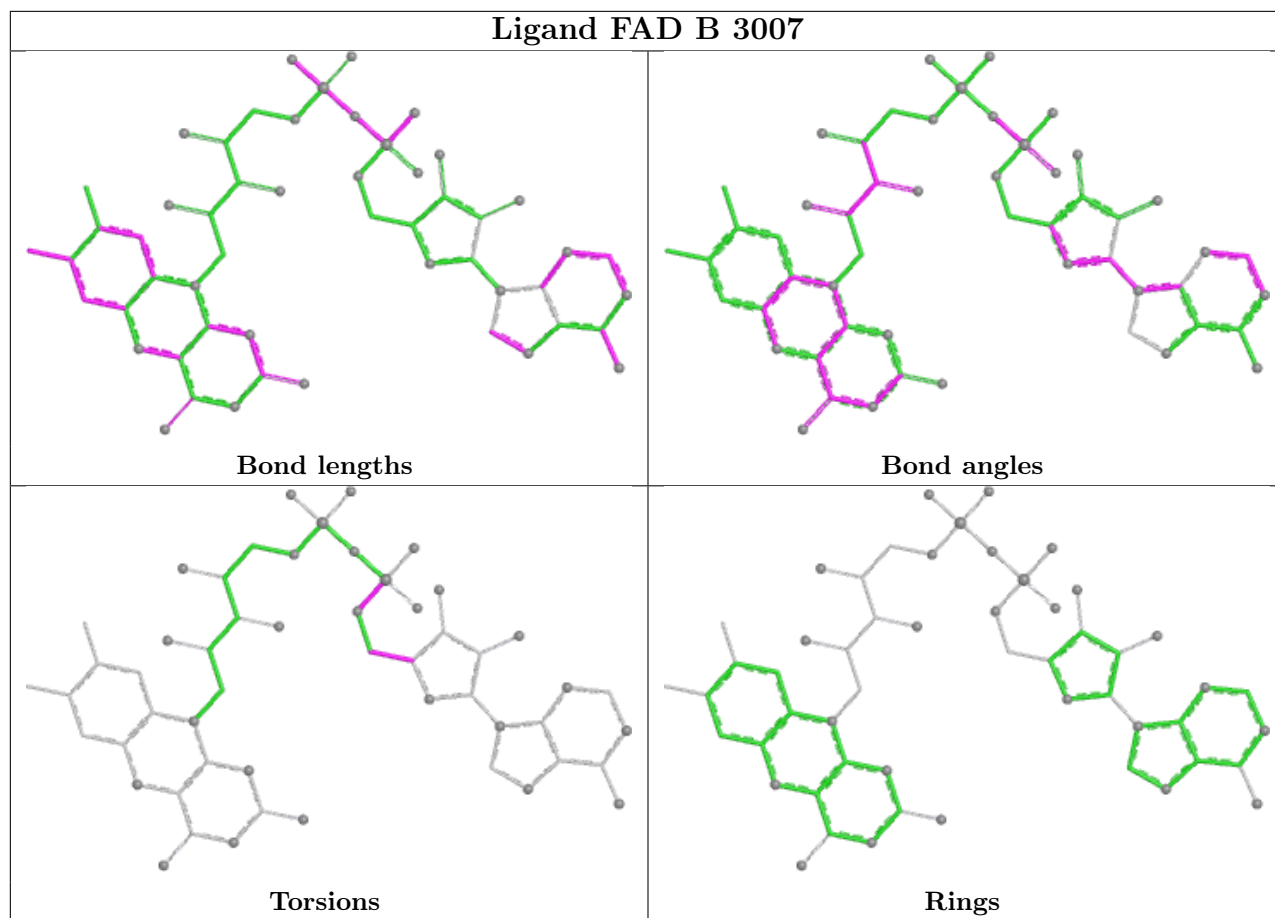
4 monomers are involved in 14 short contacts:

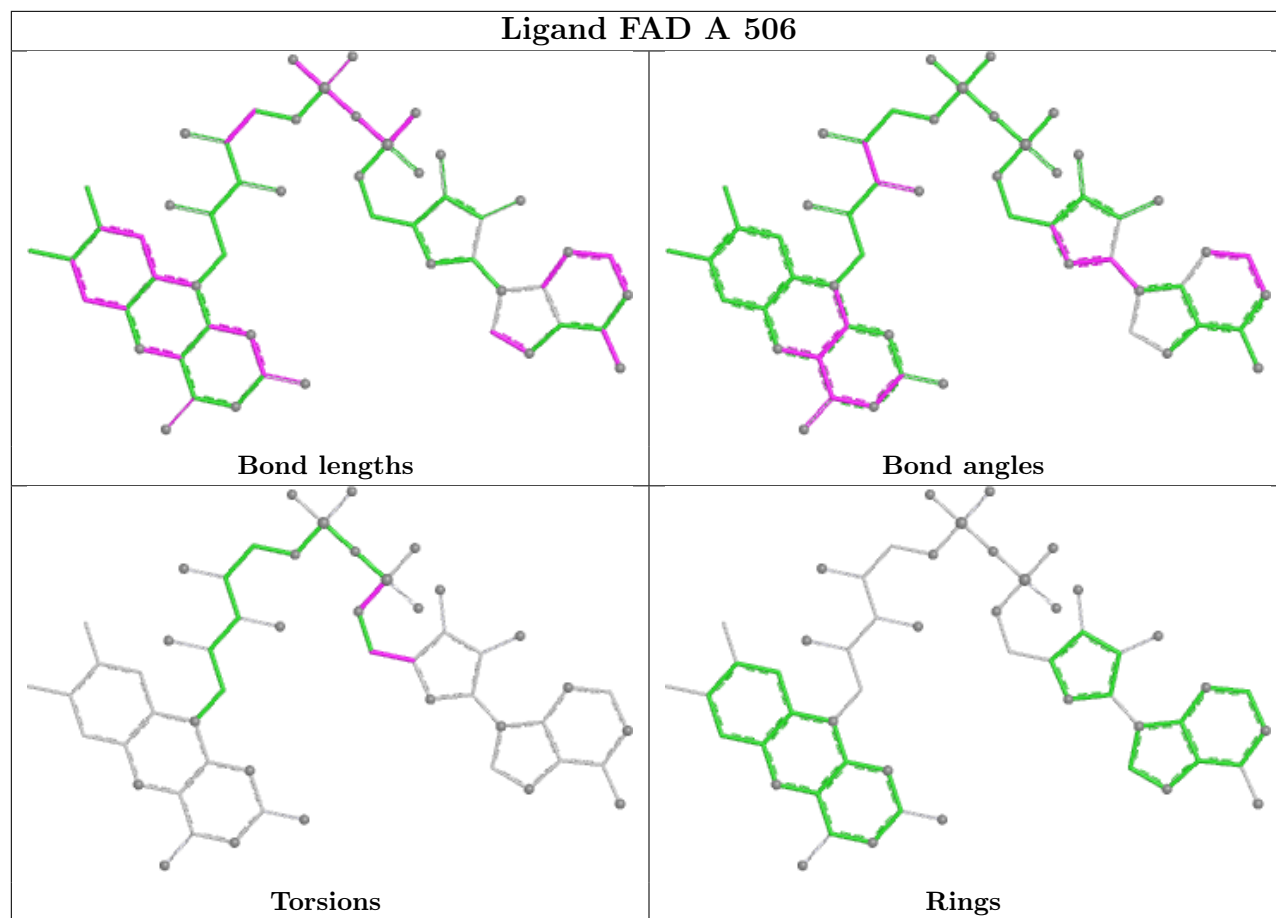
Mol	Chain	Res	Type	Clashes	Symm-Clashes
4	B	3006	COA	4	0
4	A	505	COA	7	0
5	B	3007	FAD	2	0
5	A	506	FAD	1	0

The following is a two-dimensional graphical depiction of Mogul quality analysis of bond lengths, bond angles, torsion angles, and ring geometry for all instances of the Ligand of Interest. In addition, ligands with molecular weight > 250 and outliers as shown on the validation Tables will also be included. For torsion angles, if less than 5% of the Mogul distribution of torsion angles is within 10 degrees of the torsion angle in question, then that torsion angle is considered an outlier. Any bond that is central to one or more torsion angles identified as an outlier by Mogul will be highlighted in the graph. For rings, the root-mean-square deviation (RMSD) between the ring in question and similar rings identified by Mogul is calculated over all ring torsion angles. If the average RMSD is greater than 60 degrees and the minimal RMSD between the ring in question and

any Mogul-identified rings is also greater than 60 degrees, then that ring is considered an outlier. The outliers are highlighted in purple. The color gray indicates Mogul did not find sufficient equivalents in the CSD to analyse the geometry.







## 5.7 Other polymers [i](#)

There are no such residues in this entry.

## 5.8 Polymer linkage issues [i](#)

There are no chain breaks in this entry.

## 6 Fit of model and data

### 6.1 Protein, DNA and RNA chains

In the following table, the column labelled ‘#RSRZ > 2’ contains the number (and percentage) of RSRZ outliers, followed by percent RSRZ outliers for the chain as percentile scores relative to all X-ray entries and entries of similar resolution. The OWAB column contains the minimum, median, 95<sup>th</sup> percentile and maximum values of the occupancy-weighted average B-factor per residue. The column labelled ‘Q < 0.9’ lists the number of (and percentage) of residues with an average occupancy less than 0.9.

Mol	Chain	Analysed	<RSRZ>	#RSRZ>2	OWAB(Å <sup>2</sup> )	Q<0.9
1	A	437/437 (100%)	0.15	8 (1%) 68 73	11, 17, 31, 53	0
1	B	437/437 (100%)	0.16	12 (2%) 54 59	11, 19, 30, 53	0
All	All	874/874 (100%)	0.16	20 (2%) 60 65	11, 18, 31, 53	0

All (20) RSRZ outliers are listed below:

Mol	Chain	Res	Type	RSRZ
1	B	363	PRO	6.9
1	B	361	PHE	5.9
1	B	360	ASN	5.0
1	A	58	TYR	4.6
1	B	438	LYS	4.2
1	B	123	GLU	4.2
1	B	362	TYR	3.8
1	A	54	GLU	3.6
1	A	57	ARG	3.1
1	B	437	ALA	2.9
1	A	123	GLU	2.7
1	B	364	GLY	2.6
1	A	56	ARG	2.5
1	A	141	GLN	2.5
1	B	159	VAL	2.5
1	B	43[A]	CYS	2.2
1	B	406	GLN	2.1
1	A	229	HIS	2.1
1	A	291[A]	SER	2.1
1	B	30[A]	ILE	2.0

## 6.2 Non-standard residues in protein, DNA, RNA chains [i](#)

There are no non-standard protein/DNA/RNA residues in this entry.

## 6.3 Carbohydrates [i](#)

There are no monosaccharides in this entry.

## 6.4 Ligands [i](#)

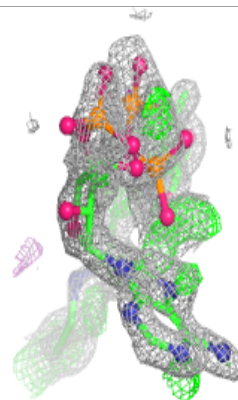
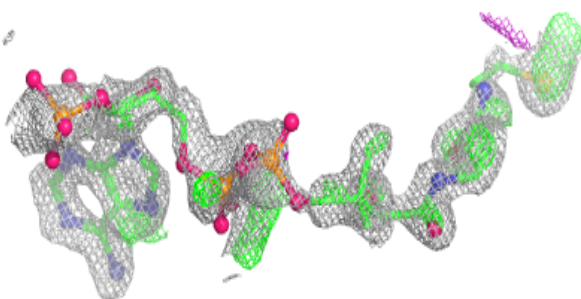
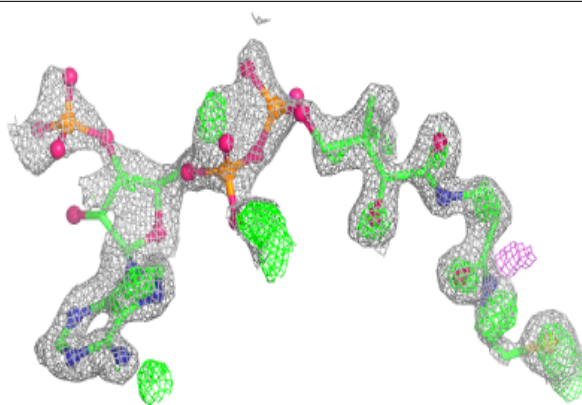
In the following table, the Atoms column lists the number of modelled atoms in the group and the number defined in the chemical component dictionary. The B-factors column lists the minimum, median, 95<sup>th</sup> percentile and maximum values of B factors of atoms in the group. The column labelled 'Q< 0.9' lists the number of atoms with occupancy less than 0.9.

Mol	Type	Chain	Res	Atoms	RSCC	RSR	B-factors( $\text{\AA}^2$ )	Q<0.9
2	MG	B	3003	1/1	0.72	0.16	34,34,34,34	0
4	COA	B	3006	48/48	0.75	0.33	21,39,52,58	48
3	CL	A	503	1/1	0.85	0.30	52,52,52,52	0
4	COA	A	505	48/48	0.88	0.37	21,29,45,52	48
2	MG	A	501	1/1	0.92	0.07	42,42,42,42	0
2	MG	B	3002	1/1	0.97	0.05	20,20,20,20	0
3	CL	B	3005	1/1	0.97	0.09	28,28,28,28	0
5	FAD	A	506	53/53	0.97	0.08	9,12,14,17	0
5	FAD	B	3007	53/53	0.97	0.09	10,13,15,18	0
3	CL	B	3001	1/1	0.98	0.19	27,27,27,27	0
3	CL	A	502	1/1	0.98	0.26	38,38,38,38	0
3	CL	B	3004	1/1	0.99	0.05	28,28,28,28	0
3	CL	A	504	1/1	0.99	0.06	23,23,23,23	0

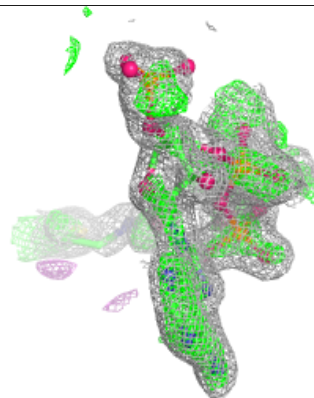
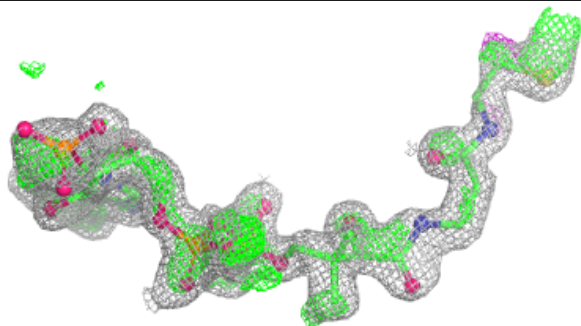
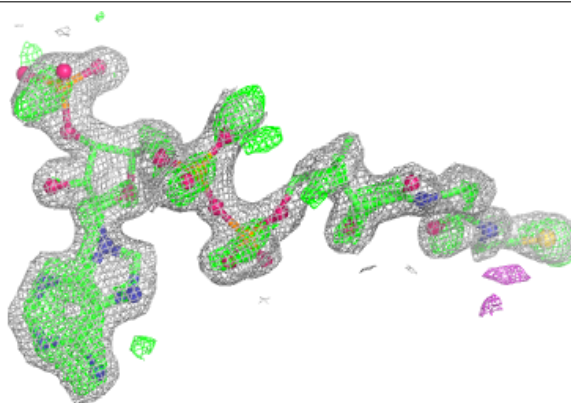
The following is a graphical depiction of the model fit to experimental electron density of all instances of the Ligand of Interest. In addition, ligands with molecular weight > 250 and outliers as shown on the geometry validation Tables will also be included. Each fit is shown from different orientation to approximate a three-dimensional view.

**Electron density around COA B 3006:**

$2mF_o-DF_c$  (at 0.7 rmsd) in gray  
 $mF_o-DF_c$  (at 3 rmsd) in purple (negative)  
and green (positive)

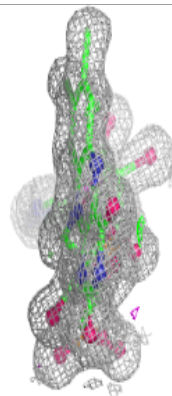
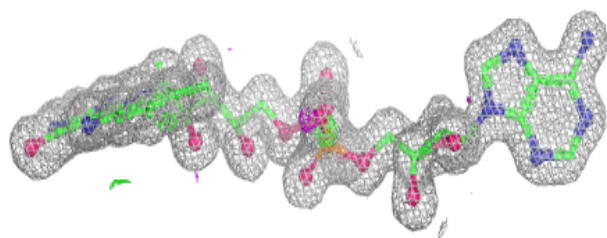
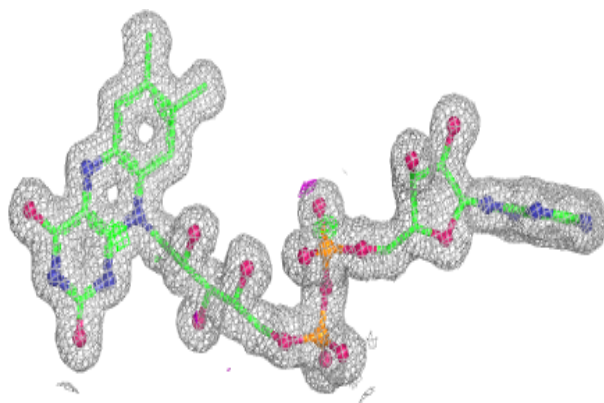
**Electron density around COA A 505:**

$2mF_o-DF_c$  (at 0.7 rmsd) in gray  
 $mF_o-DF_c$  (at 3 rmsd) in purple (negative)  
and green (positive)

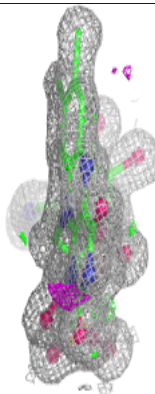
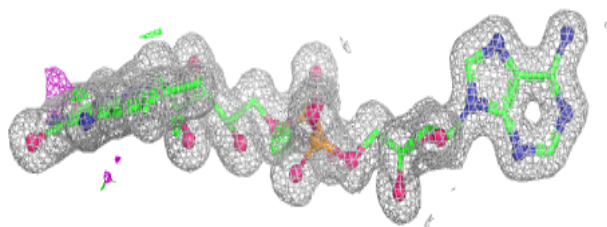
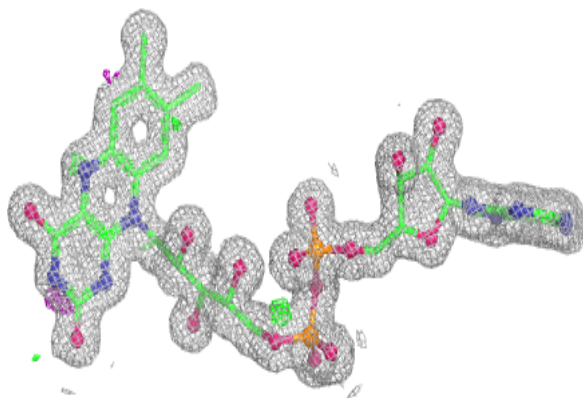


**Electron density around FAD A 506:**

$2mF_o-DF_c$  (at 0.7 rmsd) in gray  
 $mF_o-DF_c$  (at 3 rmsd) in purple (negative)  
and green (positive)

**Electron density around FAD B 3007:**

$2mF_o-DF_c$  (at 0.7 rmsd) in gray  
 $mF_o-DF_c$  (at 3 rmsd) in purple (negative)  
and green (positive)





## 6.5 Other polymers [i](#)

There are no such residues in this entry.