



# Full wwPDB X-ray Structure Validation Report ⓘ

Jun 18, 2024 – 07:44 PM EDT

PDB ID : 4GVH  
Title : Crystal structure of Salmonella typhimurium family 3 glycoside hydrolase (NagZ) covalently bound to 5-fluoro-GlcNAc.  
Authors : Bacik, J.P.; Mark, B.L.  
Deposited on : 2012-08-30  
Resolution : 1.45 Å(reported)

This is a Full wwPDB X-ray Structure Validation Report for a publicly released PDB entry.

We welcome your comments at [validation@mail.wwpdb.org](mailto:validation@mail.wwpdb.org)

A user guide is available at

<https://www.wwpdb.org/validation/2017/XrayValidationReportHelp>

with specific help available everywhere you see the ⓘ symbol.

The types of validation reports are described at

<http://www.wwpdb.org/validation/2017/FAQs#types>.

---

The following versions of software and data (see [references ⓘ](#)) were used in the production of this report:

MolProbity : 4.02b-467  
Mogul : 2022.3.0, CSD as543be (2022)  
Xtriage (Phenix) : 1.20.1  
EDS : 2.37.1  
Percentile statistics : 20191225.v01 (using entries in the PDB archive December 25th 2019)  
Refmac : 5.8.0158  
CCP4 : 7.0.044 (Gargrove)  
Ideal geometry (proteins) : Engh & Huber (2001)  
Ideal geometry (DNA, RNA) : Parkinson et al. (1996)  
Validation Pipeline (wwPDB-VP) : 2.37.1

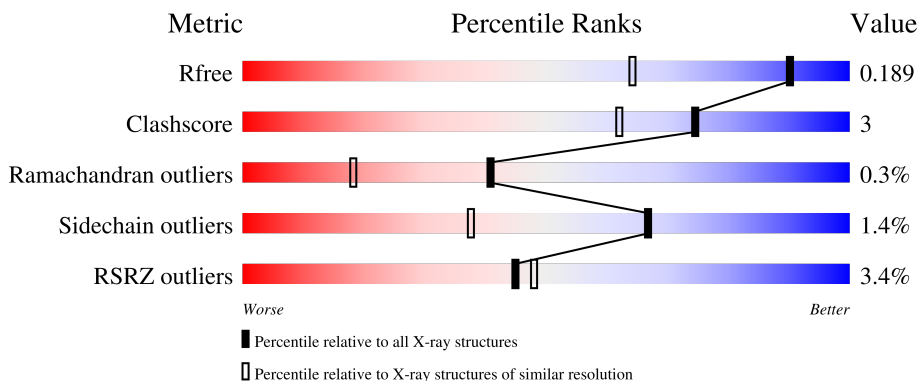
# 1 Overall quality at a glance

The following experimental techniques were used to determine the structure:

*X-RAY DIFFRACTION*

The reported resolution of this entry is 1.45 Å.

Percentile scores (ranging between 0-100) for global validation metrics of the entry are shown in the following graphic. The table shows the number of entries on which the scores are based.



Metric	Whole archive (#Entries)	Similar resolution (#Entries, resolution range(Å))
$R_{free}$	130704	1156 (1.46-1.46)
Clashscore	141614	1202 (1.46-1.46)
Ramachandran outliers	138981	1178 (1.46-1.46)
Sidechain outliers	138945	1178 (1.46-1.46)
RSRZ outliers	127900	1139 (1.46-1.46)

The table below summarises the geometric issues observed across the polymeric chains and their fit to the electron density. The red, orange, yellow and green segments of the lower bar indicate the fraction of residues that contain outliers for  $\geq 3$ , 2, 1 and 0 types of geometric quality criteria respectively. A grey segment represents the fraction of residues that are not modelled. The numeric value for each fraction is indicated below the corresponding segment, with a dot representing fractions  $\leq 5\%$ . The upper red bar (where present) indicates the fraction of residues that have poor fit to the electron density. The numeric value is given above the bar.

Mol	Chain	Length	Quality of chain
1	A	349	 5% 92% 6%
1	B	349	 % 86% 7% 6%

## 2 Entry composition i

There are 4 unique types of molecules in this entry. The entry contains 6055 atoms, of which 0 are hydrogens and 0 are deuteriums.

In the tables below, the ZeroOcc column contains the number of atoms modelled with zero occupancy, the AltConf column contains the number of residues with at least one atom in alternate conformation and the Trace column contains the number of residues modelled with at most 2 atoms.

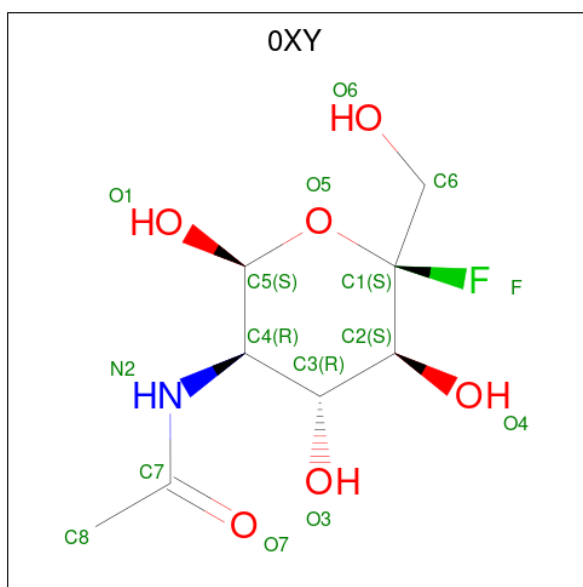
- Molecule 1 is a protein called Beta-hexosaminidase.

Mol	Chain	Residues	Atoms					ZeroOcc	AltConf	Trace
			Total	C	N	O	S			
1	A	341	2631	1643	482	489	17	0	7	0
1	B	328	2538	1589	457	475	17	0	6	0

There are 16 discrepancies between the modelled and reference sequences:

Chain	Residue	Modelled	Actual	Comment	Reference
A	342	GLY	-	expression tag	UNP Q8ZQ06
A	343	SER	-	expression tag	UNP Q8ZQ06
A	344	HIS	-	expression tag	UNP Q8ZQ06
A	345	HIS	-	expression tag	UNP Q8ZQ06
A	346	HIS	-	expression tag	UNP Q8ZQ06
A	347	HIS	-	expression tag	UNP Q8ZQ06
A	348	HIS	-	expression tag	UNP Q8ZQ06
A	349	HIS	-	expression tag	UNP Q8ZQ06
B	342	GLY	-	expression tag	UNP Q8ZQ06
B	343	SER	-	expression tag	UNP Q8ZQ06
B	344	HIS	-	expression tag	UNP Q8ZQ06
B	345	HIS	-	expression tag	UNP Q8ZQ06
B	346	HIS	-	expression tag	UNP Q8ZQ06
B	347	HIS	-	expression tag	UNP Q8ZQ06
B	348	HIS	-	expression tag	UNP Q8ZQ06
B	349	HIS	-	expression tag	UNP Q8ZQ06

- Molecule 2 is 5-fluoro-N-acetyl-alpha-D-glucosamine (three-letter code: 0XY) (formula: C<sub>8</sub>H<sub>14</sub>FNO<sub>6</sub>).



Mol	Chain	Residues	Atoms				ZeroOcc	AltConf	
			Total	C	F	N			O
2	A	1	Total	C	F	N	O	0	0
			15	8	1	1	5		
2	B	1	Total	C	F	N	O	0	0
			15	8	1	1	5		

- Molecule 3 is 2-(N-MORPHOLINO)-ETHANESULFONIC ACID (three-letter code: MES) (formula: C<sub>6</sub>H<sub>13</sub>NO<sub>4</sub>S).



Mol	Chain	Residues	Atoms					ZeroOcc	AltConf
			Total	C	N	O	S		
3	A	1	Total	C	N	O	S	0	0
			12	6	1	4	1		

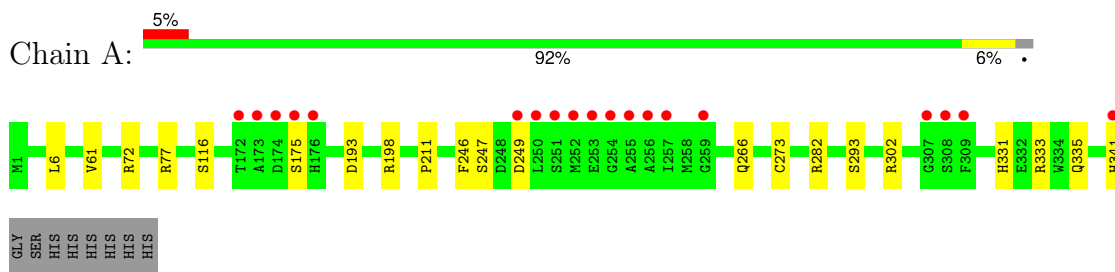
- Molecule 4 is water.

Mol	Chain	Residues	Atoms		ZeroOcc	AltConf
4	A	426	Total 426	O 426	0	0
4	B	418	Total 418	O 418	0	0

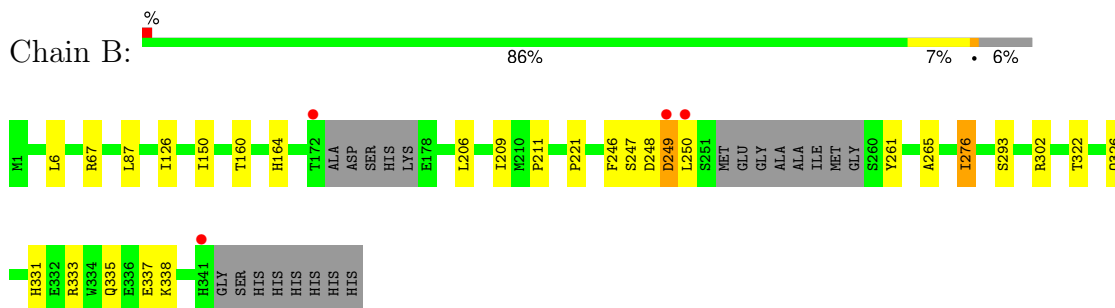
### 3 Residue-property plots [i](#)

These plots are drawn for all protein, RNA, DNA and oligosaccharide chains in the entry. The first graphic for a chain summarises the proportions of the various outlier classes displayed in the second graphic. The second graphic shows the sequence view annotated by issues in geometry and electron density. Residues are color-coded according to the number of geometric quality criteria for which they contain at least one outlier: green = 0, yellow = 1, orange = 2 and red = 3 or more. A red dot above a residue indicates a poor fit to the electron density ( $RSRZ > 2$ ). Stretches of 2 or more consecutive residues without any outlier are shown as a green connector. Residues present in the sample, but not in the model, are shown in grey.

- Molecule 1: Beta-hexosaminidase



- Molecule 1: Beta-hexosaminidase



## 4 Data and refinement statistics

Property	Value	Source
Space group	P 1 21 1	Depositor
Cell constants a, b, c, $\alpha$ , $\beta$ , $\gamma$	49.26Å 65.92Å 94.72Å 90.00° 99.28° 90.00°	Depositor
Resolution (Å)	48.62 – 1.45 48.62 – 1.45	Depositor EDS
% Data completeness (in resolution range)	99.5 (48.62-1.45) 96.9 (48.62-1.45)	Depositor EDS
$R_{merge}$	0.06	Depositor
$R_{sym}$	0.07	Depositor
$\langle I/\sigma(I) \rangle$ <sup>1</sup>	2.88 (at 1.45Å)	Xtrriage
Refinement program	PHENIX (phenix.refine: 1.7.2_869)	Depositor
R, $R_{free}$	0.165 , 0.195 0.161 , 0.189	Depositor DCC
$R_{free}$ test set	3154 reflections (2.99%)	wwPDB-VP
Wilson B-factor (Å <sup>2</sup> )	9.3	Xtrriage
Anisotropy	0.675	Xtrriage
Bulk solvent $k_{sol}$ (e/Å <sup>3</sup> ), $B_{sol}$ (Å <sup>2</sup> )	0.35 , 44.6	EDS
L-test for twinning <sup>2</sup>	$\langle  L  \rangle = 0.47$ , $\langle L^2 \rangle = 0.30$	Xtrriage
Estimated twinning fraction	No twinning to report.	Xtrriage
$F_o, F_c$ correlation	0.97	EDS
Total number of atoms	6055	wwPDB-VP
Average B, all atoms (Å <sup>2</sup> )	13.0	wwPDB-VP

Xtrriage's analysis on translational NCS is as follows: *The analyses of the Patterson function reveals a significant off-origin peak that is 52.57 % of the origin peak, indicating pseudo-translational symmetry. The chance of finding a peak of this or larger height randomly in a structure without pseudo-translational symmetry is equal to 4.7709e-05. The detected translational NCS is most likely also responsible for the elevated intensity ratio.*

<sup>1</sup>Intensities estimated from amplitudes.

<sup>2</sup>Theoretical values of  $\langle |L| \rangle$ ,  $\langle L^2 \rangle$  for acentric reflections are 0.5, 0.333 respectively for untwinned datasets, and 0.375, 0.2 for perfectly twinned datasets.

## 5 Model quality

### 5.1 Standard geometry

Bond lengths and bond angles in the following residue types are not validated in this section: MES, OXY

The Z score for a bond length (or angle) is the number of standard deviations the observed value is removed from the expected value. A bond length (or angle) with  $|Z| > 5$  is considered an outlier worth inspection. RMSZ is the root-mean-square of all Z scores of the bond lengths (or angles).

Mol	Chain	Bond lengths		Bond angles	
		RMSZ	# Z  >5	RMSZ	# Z  >5
1	A	0.29	0/2706	0.51	0/3659
1	B	0.31	0/2607	0.52	0/3526
All	All	0.30	0/5313	0.52	0/7185

There are no bond length outliers.

There are no bond angle outliers.

There are no chirality outliers.

There are no planarity outliers.

### 5.2 Too-close contacts

In the following table, the Non-H and H(model) columns list the number of non-hydrogen atoms and hydrogen atoms in the chain respectively. The H(added) column lists the number of hydrogen atoms added and optimized by MolProbity. The Clashes column lists the number of clashes within the asymmetric unit, whereas Symm-Clashes lists symmetry-related clashes.

Mol	Chain	Non-H	H(model)	H(added)	Clashes	Symm-Clashes
1	A	2631	0	2565	14	0
1	B	2538	0	2475	19	0
2	A	15	0	8	0	0
2	B	15	0	8	0	0
3	A	12	0	12	1	0
4	A	426	0	0	7	0
4	B	418	0	0	6	0
All	All	6055	0	5068	33	0

The all-atom clashscore is defined as the number of clashes found per 1000 atoms (including hydrogen atoms). The all-atom clashscore for this structure is 3.



All (33) close contacts within the same asymmetric unit are listed below, sorted by their clash magnitude.

Atom-1	Atom-2	Interatomic distance (Å)	Clash overlap (Å)
1:B:326:GLN:NE2	4:B:698:HOH:O	2.24	0.70
1:B:265:ALA:HB1	1:B:276:ILE:HD12	1.74	0.68
1:B:322:THR:HG22	1:B:326:GLN:NE2	2.15	0.61
1:B:248:ASP:OD1	1:B:249:ASP:N	2.36	0.58
1:A:302:ARG:HD2	4:A:918:HOH:O	2.05	0.55
1:B:333:ARG:O	1:B:337[A]:GLU:HG2	2.06	0.55
1:A:282[B]:ARG:NH2	4:A:908:HOH:O	2.28	0.54
1:A:77:ARG:NH1	4:A:878:HOH:O	2.35	0.54
1:A:333:ARG:NE	4:A:711:HOH:O	2.40	0.54
1:B:333:ARG:NH2	4:B:855:HOH:O	2.41	0.54
1:A:211:PRO:HD2	1:A:246:PHE:O	2.08	0.53
1:B:331:HIS:O	1:B:335:GLN:HG2	2.09	0.53
1:A:331:HIS:O	1:A:335:GLN:HG2	2.10	0.52
1:B:211:PRO:HD2	1:B:246:PHE:O	2.09	0.52
1:B:302:ARG:HD2	4:B:914:HOH:O	2.12	0.49
1:B:87:LEU:HD21	1:B:337[A]:GLU:HG3	1.95	0.47
1:B:126:ILE:HG12	4:B:627:HOH:O	2.17	0.45
1:B:338:LYS:HE3	4:B:917:HOH:O	2.15	0.45
1:B:67:ARG:NH1	4:B:868:HOH:O	2.48	0.43
1:A:198:ARG:NH2	4:A:646:HOH:O	2.46	0.42
1:A:198:ARG:NH1	4:A:848:HOH:O	2.52	0.42
1:B:250:LEU:HG	1:B:261:TYR:CD2	2.54	0.42
1:A:72:ARG:NH1	4:A:923:HOH:O	2.52	0.42
1:A:247[A]:SER:HB2	1:A:273:CYS:SG	2.59	0.41
1:A:341:HIS:O	1:A:341:HIS:ND1	2.53	0.41
1:B:150:ILE:HG23	1:B:160:THR:HG21	2.01	0.41
1:A:61:VAL:O	1:A:116:SER:HA	2.21	0.41
1:B:206:LEU:HD13	1:B:209:ILE:HD11	2.02	0.41
1:A:266:GLN:HB2	1:B:221:PRO:HG2	2.03	0.41
3:A:402:MES:H81	3:A:402:MES:H32	1.55	0.40

There are no symmetry-related clashes.

## 5.3 Torsion angles [i](#)

### 5.3.1 Protein backbone [i](#)

In the following table, the Percentiles column shows the percent Ramachandran outliers of the chain as a percentile score with respect to all X-ray entries followed by that with respect to entries of similar resolution.

The Analysed column shows the number of residues for which the backbone conformation was analysed, and the total number of residues.

Mol	Chain	Analysed	Favoured	Allowed	Outliers	Percentiles	
1	A	346/349 (99%)	338 (98%)	7 (2%)	1 (0%)	41	18
1	B	328/349 (94%)	317 (97%)	10 (3%)	1 (0%)	41	18
All	All	674/698 (97%)	655 (97%)	17 (2%)	2 (0%)	41	18

All (2) Ramachandran outliers are listed below:

Mol	Chain	Res	Type
1	A	249	ASP
1	B	249	ASP

### 5.3.2 Protein sidechains [i](#)

In the following table, the Percentiles column shows the percent sidechain outliers of the chain as a percentile score with respect to all X-ray entries followed by that with respect to entries of similar resolution.

The Analysed column shows the number of residues for which the sidechain conformation was analysed, and the total number of residues.

Mol	Chain	Analysed	Rotameric	Outliers	Percentiles	
1	A	268/281 (95%)	264 (98%)	4 (2%)	65	35
1	B	263/281 (94%)	260 (99%)	3 (1%)	73	48
All	All	531/562 (94%)	524 (99%)	7 (1%)	67	40

All (7) residues with a non-rotameric sidechain are listed below:

Mol	Chain	Res	Type
1	A	6	LEU
1	A	175	SER
1	A	193	ASP
1	A	293	SER
1	B	6	LEU
1	B	276	ILE
1	B	293	SER

Sometimes sidechains can be flipped to improve hydrogen bonding and reduce clashes. There are no such sidechains identified.

### 5.3.3 RNA [i](#)

There are no RNA molecules in this entry.

## 5.4 Non-standard residues in protein, DNA, RNA chains [i](#)

There are no non-standard protein/DNA/RNA residues in this entry.

## 5.5 Carbohydrates [i](#)

There are no monosaccharides in this entry.

## 5.6 Ligand geometry [i](#)

3 ligands are modelled in this entry.

In the following table, the Counts columns list the number of bonds (or angles) for which Mogul statistics could be retrieved, the number of bonds (or angles) that are observed in the model and the number of bonds (or angles) that are defined in the Chemical Component Dictionary. The Link column lists molecule types, if any, to which the group is linked. The Z score for a bond length (or angle) is the number of standard deviations the observed value is removed from the expected value. A bond length (or angle) with  $|Z| > 2$  is considered an outlier worth inspection. RMSZ is the root-mean-square of all Z scores of the bond lengths (or angles).

Mol	Type	Chain	Res	Link	Bond lengths			Bond angles		
					Counts	RMSZ	# Z  > 2	Counts	RMSZ	# Z  > 2
3	MES	A	402	-	12,12,12	2.28	1 (8%)	15,16,16	2.18	4 (26%)
2	OXY	A	401	1	12,15,16	2.66	4 (33%)	16,22,24	1.02	1 (6%)
2	OXY	B	401	1	12,15,16	2.62	4 (33%)	16,22,24	1.11	2 (12%)

In the following table, the Chirals column lists the number of chiral outliers, the number of chiral centers analysed, the number of these observed in the model and the number defined in the Chemical Component Dictionary. Similar counts are reported in the Torsion and Rings columns. '-' means no outliers of that kind were identified.

Mol	Type	Chain	Res	Link	Chirals	Torsions	Rings
3	MES	A	402	-	-	4/6/14/14	0/1/1/1
2	OXY	A	401	1	-	0/6/27/30	0/1/1/1
2	OXY	B	401	1	-	0/6/27/30	0/1/1/1

All (9) bond length outliers are listed below:

Mol	Chain	Res	Type	Atoms	Z	Observed(Å)	Ideal(Å)
3	A	402	MES	C8-S	-7.63	1.66	1.77
2	A	401	0XY	C3-C2	-5.88	1.43	1.53
2	B	401	0XY	C3-C2	-5.59	1.43	1.53
2	A	401	0XY	O5-C1	5.18	1.47	1.37
2	B	401	0XY	O5-C1	4.80	1.47	1.37
2	B	401	0XY	C7-N2	3.32	1.45	1.34
2	A	401	0XY	C7-N2	3.09	1.44	1.34
2	B	401	0XY	O5-C5	-2.44	1.40	1.43
2	A	401	0XY	O5-C5	-2.10	1.40	1.43

All (7) bond angle outliers are listed below:

Mol	Chain	Res	Type	Atoms	Z	Observed(°)	Ideal(°)
3	A	402	MES	O1S-S-C8	4.56	113.62	106.73
3	A	402	MES	C5-N4-C3	4.08	117.63	108.84
3	A	402	MES	C2-C3-N4	-2.83	105.81	110.12
3	A	402	MES	C7-N4-C3	2.75	118.56	111.24
2	A	401	0XY	C5-C4-N2	-2.40	106.66	110.43
2	B	401	0XY	C5-C4-N2	-2.05	107.20	110.43
2	B	401	0XY	C4-N2-C7	-2.03	120.18	122.90

There are no chirality outliers.

All (4) torsion outliers are listed below:

Mol	Chain	Res	Type	Atoms
3	A	402	MES	C8-C7-N4-C3
3	A	402	MES	C7-C8-S-O3S
3	A	402	MES	C7-C8-S-O1S
3	A	402	MES	C7-C8-S-O2S

There are no ring outliers.

1 monomer is involved in 1 short contact:

Mol	Chain	Res	Type	Clashes	Symm-Clashes
3	A	402	MES	1	0

## 5.7 Other polymers [\(i\)](#)

There are no such residues in this entry.

## 5.8 Polymer linkage issues

There are no chain breaks in this entry.

## 6 Fit of model and data

### 6.1 Protein, DNA and RNA chains

In the following table, the column labelled ‘#RSRZ > 2’ contains the number (and percentage) of RSRZ outliers, followed by percent RSRZ outliers for the chain as percentile scores relative to all X-ray entries and entries of similar resolution. The OWAB column contains the minimum, median, 95<sup>th</sup> percentile and maximum values of the occupancy-weighted average B-factor per residue. The column labelled ‘Q < 0.9’ lists the number of (and percentage) of residues with an average occupancy less than 0.9.

Mol	Chain	Analysed	<RSRZ>	#RSRZ>2	OWAB(Å <sup>2</sup> )	Q<0.9
1	A	341/349 (97%)	-0.02	19 (5%) 24 26	4, 10, 28, 43	0
1	B	328/349 (93%)	-0.19	4 (1%) 79 80	4, 9, 23, 37	0
All	All	669/698 (95%)	-0.10	23 (3%) 45 48	4, 10, 26, 43	0

All (23) RSRZ outliers are listed below:

Mol	Chain	Res	Type	RSRZ
1	A	255	ALA	7.8
1	A	254	GLY	7.2
1	A	175	SER	6.1
1	A	257	ILE	6.0
1	A	174	ASP	4.9
1	A	253	GLU	4.8
1	A	173	ALA	4.6
1	B	250	LEU	4.5
1	A	252	MET	4.0
1	A	250	LEU	3.9
1	A	172	THR	3.5
1	A	256	ALA	3.4
1	B	249	ASP	3.2
1	A	249	ASP	3.1
1	A	251	SER	2.6
1	A	309	PHE	2.5
1	A	341	HIS	2.4
1	A	259	GLY	2.3
1	B	341	HIS	2.3
1	A	176	HIS	2.2
1	A	308	SER	2.2
1	B	172	THR	2.1
1	A	307	GLY	2.1

## 6.2 Non-standard residues in protein, DNA, RNA chains [i](#)

There are no non-standard protein/DNA/RNA residues in this entry.

## 6.3 Carbohydrates [i](#)

There are no monosaccharides in this entry.

## 6.4 Ligands [i](#)

In the following table, the Atoms column lists the number of modelled atoms in the group and the number defined in the chemical component dictionary. The B-factors column lists the minimum, median, 95<sup>th</sup> percentile and maximum values of B factors of atoms in the group. The column labelled 'Q< 0.9' lists the number of atoms with occupancy less than 0.9.

Mol	Type	Chain	Res	Atoms	RSCC	RSR	B-factors(Å <sup>2</sup> )	Q<0.9
2	OXY	B	401	15/16	0.95	0.10	7,10,13,13	0
3	MES	A	402	12/12	0.95	0.12	12,19,25,26	12
2	OXY	A	401	15/16	0.96	0.08	7,9,12,12	0

## 6.5 Other polymers [i](#)

There are no such residues in this entry.