



# Full wwPDB X-ray Structure Validation Report ⓘ

Sep 9, 2023 – 05:50 PM EDT

PDB ID : 4HGH  
Title : Crystal structure of P450 BM3 5F5 heme domain variant complexed with styrene (dataset I)  
Authors : Shehzad, A.; Panneerselvam, S.; Bocola, M.; Mueller-Dieckmann, J.; Wilmanns, M.; Schwaneberg, U.  
Deposited on : 2012-10-08  
Resolution : 1.40 Å(reported)

This is a Full wwPDB X-ray Structure Validation Report for a publicly released PDB entry.

We welcome your comments at [validation@mail.wwpdb.org](mailto:validation@mail.wwpdb.org)

A user guide is available at

<https://www.wwpdb.org/validation/2017/XrayValidationReportHelp>

with specific help available everywhere you see the ⓘ symbol.

The types of validation reports are described at

<http://www.wwpdb.org/validation/2017/FAQs#types>.

---

The following versions of software and data (see [references ⓘ](#)) were used in the production of this report:

MolProbity : 4.02b-467  
Mogul : 1.8.5 (274361), CSD as541be (2020)  
Xtrriage (Phenix) : 1.13  
EDS : 2.35.1  
buster-report : 1.1.7 (2018)  
Percentile statistics : 20191225.v01 (using entries in the PDB archive December 25th 2019)  
Refmac : 5.8.0158  
CCP4 : 7.0.044 (Gargrove)  
Ideal geometry (proteins) : Engh & Huber (2001)  
Ideal geometry (DNA, RNA) : Parkinson et al. (1996)  
Validation Pipeline (wwPDB-VP) : 2.35.1

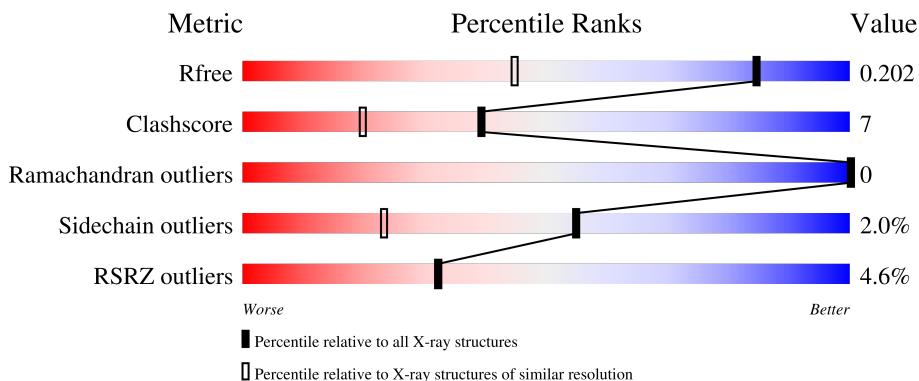
# 1 Overall quality at a glance

The following experimental techniques were used to determine the structure:

*X-RAY DIFFRACTION*

The reported resolution of this entry is 1.40 Å.

Percentile scores (ranging between 0-100) for global validation metrics of the entry are shown in the following graphic. The table shows the number of entries on which the scores are based.



Metric	Whole archive (#Entries)	Similar resolution (#Entries, resolution range(Å))
$R_{free}$	130704	1714 (1.40-1.40)
Clashscore	141614	1812 (1.40-1.40)
Ramachandran outliers	138981	1763 (1.40-1.40)
Sidechain outliers	138945	1762 (1.40-1.40)
RSRZ outliers	127900	1674 (1.40-1.40)

The table below summarises the geometric issues observed across the polymeric chains and their fit to the electron density. The red, orange, yellow and green segments of the lower bar indicate the fraction of residues that contain outliers for  $\geq 3$ , 2, 1 and 0 types of geometric quality criteria respectively. A grey segment represents the fraction of residues that are not modelled. The numeric value for each fraction is indicated below the corresponding segment, with a dot representing fractions  $\leq 5\%$ . The upper red bar (where present) indicates the fraction of residues that have poor fit to the electron density. The numeric value is given above the bar.

Mol	Chain	Length	Quality of chain
1	A	455	
1	B	455	

The following table lists non-polymeric compounds, carbohydrate monomers and non-standard residues in protein, DNA, RNA chains that are outliers for geometric or electron-density-fit criteria:

Mol	Type	Chain	Res	Chirality	Geometry	Clashes	Electron density
3	SYN	B	502	-	X	-	-
6	PEG	A	505	-	-	X	-

## 2 Entry composition [i](#)

There are 7 unique types of molecules in this entry. The entry contains 8824 atoms, of which 0 are hydrogens and 0 are deuteriums.

In the tables below, the ZeroOcc column contains the number of atoms modelled with zero occupancy, the AltConf column contains the number of residues with at least one atom in alternate conformation and the Trace column contains the number of residues modelled with at most 2 atoms.

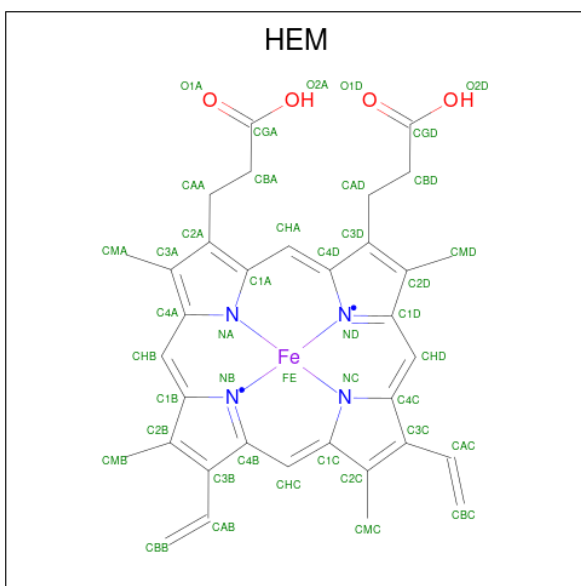
- Molecule 1 is a protein called Bifunctional P-450/NADPH-P450 reductase.

Mol	Chain	Residues	Atoms					ZeroOcc	AltConf	Trace
			Total	C	N	O	S			
1	A	455	3817	2458	636	704	19	0	28	0
1	B	455	3851	2480	642	710	19	0	33	0

There are 4 discrepancies between the modelled and reference sequences:

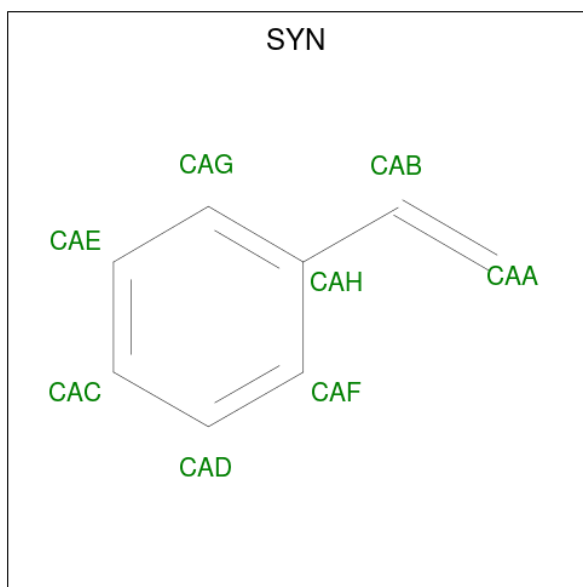
Chain	Residue	Modelled	Actual	Comment	Reference
A	87	ALA	PHE	engineered mutation	UNP P14779
A	235	ALA	THR	engineered mutation	UNP P14779
B	87	ALA	PHE	engineered mutation	UNP P14779
B	235	ALA	THR	engineered mutation	UNP P14779

- Molecule 2 is PROTOPORPHYRIN IX CONTAINING FE (three-letter code: HEM) (formula:  $C_{34}H_{32}FeN_4O_4$ ).



Mol	Chain	Residues	Atoms				ZeroOcc	AltConf	
2	A	1	Total	C	Fe	N	O	0	0
			43	34	1	4	4		
2	B	1	Total	C	Fe	N	O	0	0
			43	34	1	4	4		

- Molecule 3 is ethenylbenzene (three-letter code: SYN) (formula: C<sub>8</sub>H<sub>8</sub>).



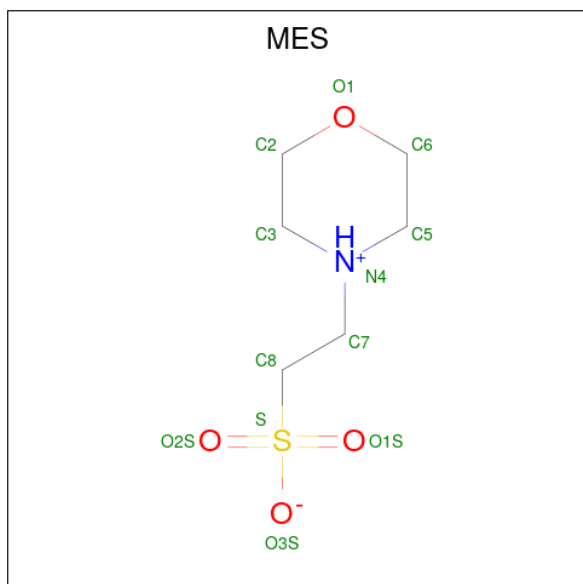
Mol	Chain	Residues	Atoms		ZeroOcc	AltConf
3	A	1	Total	C	0	0
			8	8		
3	B	1	Total	C	0	0
			8	8		

- Molecule 4 is GLYCEROL (three-letter code: GOL) (formula: C<sub>3</sub>H<sub>8</sub>O<sub>3</sub>).



Mol	Chain	Residues	Atoms			ZeroOcc	AltConf
4	A	1	Total	C	O	0	0
			6	3	3		
4	A	1	Total	C	O	0	0
			6	3	3		

- Molecule 5 is 2-(N-MORPHOLINO)-ETHANESULFONIC ACID (three-letter code: MES) (formula: C<sub>6</sub>H<sub>13</sub>NO<sub>4</sub>S).



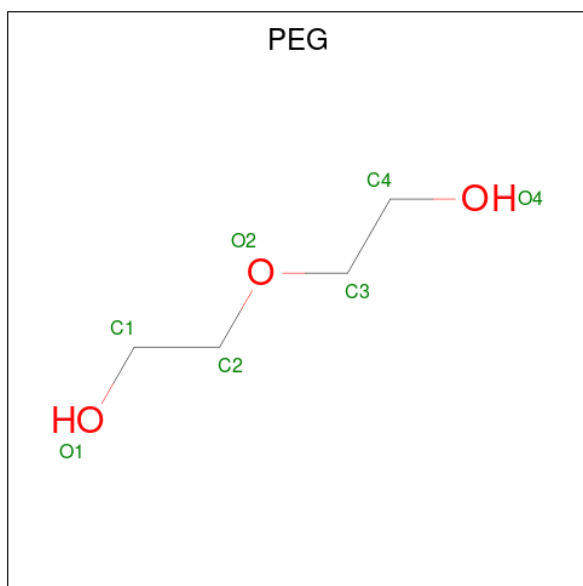
Mol	Chain	Residues	Atoms					ZeroOcc	AltConf
5	A	1	Total	C	N	O	S	0	0
			12	6	1	4	1		

*Continued on next page...*

Continued from previous page...

Mol	Chain	Residues	Atoms					ZeroOcc	AltConf
			Total	C	N	O	S		
5	B	1	12	6	1	4	1	0	0

- Molecule 6 is DI(HYDROXYETHYL)ETHER (three-letter code: PEG) (formula: C<sub>4</sub>H<sub>10</sub>O<sub>3</sub>).



Mol	Chain	Residues	Atoms			ZeroOcc	AltConf
			Total	C	O		
6	A	1	7	4	3	0	0

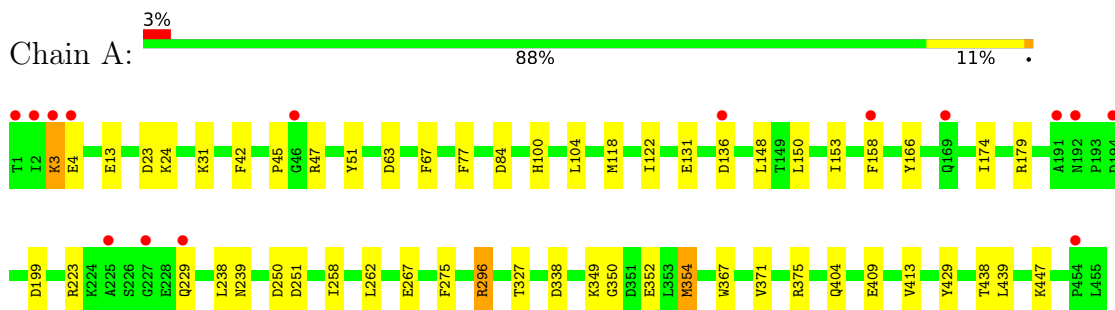
- Molecule 7 is water.

Mol	Chain	Residues	Atoms		ZeroOcc	AltConf
			Total	O		
7	A	536	536	536	0	0
7	B	475	475	475	0	0

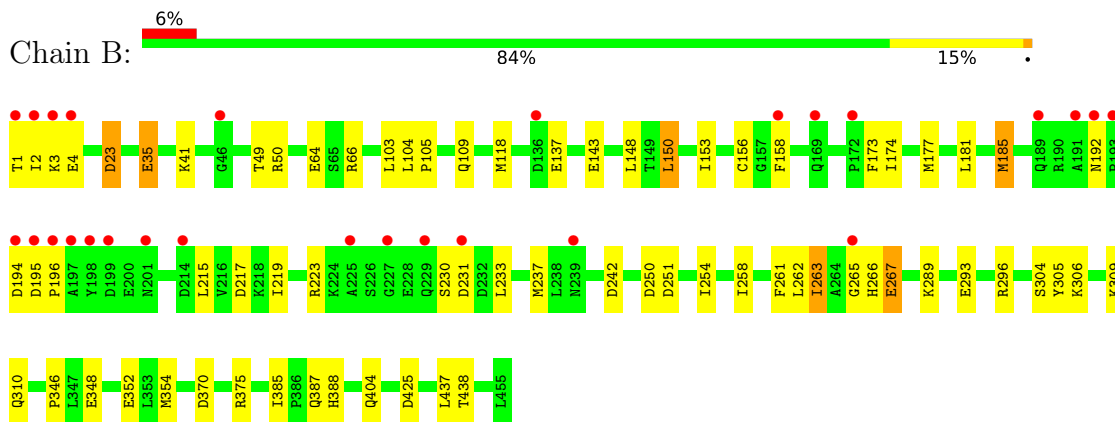
### 3 Residue-property plots [i](#)

These plots are drawn for all protein, RNA, DNA and oligosaccharide chains in the entry. The first graphic for a chain summarises the proportions of the various outlier classes displayed in the second graphic. The second graphic shows the sequence view annotated by issues in geometry and electron density. Residues are color-coded according to the number of geometric quality criteria for which they contain at least one outlier: green = 0, yellow = 1, orange = 2 and red = 3 or more. A red dot above a residue indicates a poor fit to the electron density ( $RSRZ > 2$ ). Stretches of 2 or more consecutive residues without any outlier are shown as a green connector. Residues present in the sample, but not in the model, are shown in grey.

- Molecule 1: Bifunctional P-450/NADPH-P450 reductase



- Molecule 1: Bifunctional P-450/NADPH-P450 reductase





## 4 Data and refinement statistics

Property	Value	Source
Space group	P 1 21 1	Depositor
Cell constants a, b, c, $\alpha$ , $\beta$ , $\gamma$	59.09Å 149.27Å 65.16Å 90.00° 98.38° 90.00°	Depositor
Resolution (Å)	19.87 – 1.40 19.87 – 1.40	Depositor EDS
% Data completeness (in resolution range)	96.3 (19.87-1.40) 96.4 (19.87-1.40)	Depositor EDS
$R_{merge}$	(Not available)	Depositor
$R_{sym}$	(Not available)	Depositor
$\langle I/\sigma(I) \rangle$ <sup>1</sup>	2.54 (at 1.40Å)	Xtrriage
Refinement program	REFMAC 5.6.0117	Depositor
R, $R_{free}$	0.190 , 0.204 0.188 , 0.202	Depositor DCC
$R_{free}$ test set	792 reflections (0.38%)	wwPDB-VP
Wilson B-factor (Å <sup>2</sup> )	12.3	Xtrriage
Anisotropy	0.035	Xtrriage
Bulk solvent $k_{sol}$ (e/Å <sup>3</sup> ), $B_{sol}$ (Å <sup>2</sup> )	0.39 , 56.3	EDS
L-test for twinning <sup>2</sup>	$\langle  L  \rangle = 0.48$ , $\langle L^2 \rangle = 0.32$	Xtrriage
Estimated twinning fraction	No twinning to report.	Xtrriage
$F_o, F_c$ correlation	0.96	EDS
Total number of atoms	8824	wwPDB-VP
Average B, all atoms (Å <sup>2</sup> )	19.0	wwPDB-VP

Xtrriage's analysis on translational NCS is as follows: *The largest off-origin peak in the Patterson function is 4.54% of the height of the origin peak. No significant pseudotranslation is detected.*

<sup>1</sup>Intensities estimated from amplitudes.

<sup>2</sup>Theoretical values of  $\langle |L| \rangle$ ,  $\langle L^2 \rangle$  for acentric reflections are 0.5, 0.333 respectively for untwinned datasets, and 0.375, 0.2 for perfectly twinned datasets.

## 5 Model quality i

### 5.1 Standard geometry i

Bond lengths and bond angles in the following residue types are not validated in this section: PEG, GOL, HEM, SYN, MES

The Z score for a bond length (or angle) is the number of standard deviations the observed value is removed from the expected value. A bond length (or angle) with  $|Z| > 5$  is considered an outlier worth inspection. RMSZ is the root-mean-square of all Z scores of the bond lengths (or angles).

Mol	Chain	Bond lengths		Bond angles	
		RMSZ	# $ Z  > 5$	RMSZ	# $ Z  > 5$
1	A	1.29	8/3978 (0.2%)	1.17	22/5373 (0.4%)
1	B	1.29	13/4016 (0.3%)	1.13	14/5425 (0.3%)
All	All	1.29	21/7994 (0.3%)	1.15	36/10798 (0.3%)

All (21) bond length outliers are listed below:

Mol	Chain	Res	Type	Atoms	Z	Observed(Å)	Ideal(Å)
1	B	64	GLU	CD-OE2	-8.58	1.16	1.25
1	A	409[A]	GLU	CG-CD	-8.32	1.39	1.51
1	A	409[B]	GLU	CG-CD	-8.32	1.39	1.51
1	B	137	GLU	CD-OE1	-6.99	1.18	1.25
1	B	143	GLU	CD-OE2	-6.11	1.19	1.25
1	B	35	GLU	CG-CD	5.92	1.60	1.51
1	B	137	GLU	CD-OE2	-5.86	1.19	1.25
1	B	293	GLU	CD-OE1	-5.84	1.19	1.25
1	B	348	GLU	CD-OE2	-5.75	1.19	1.25
1	A	352	GLU	CD-OE2	5.72	1.31	1.25
1	B	156	CYS	C-O	5.54	1.33	1.23
1	B	143	GLU	CD-OE1	-5.53	1.19	1.25
1	A	375	ARG	CZ-NH1	5.47	1.40	1.33
1	B	352	GLU	CG-CD	-5.41	1.43	1.51
1	A	166	TYR	CG-CD2	5.37	1.46	1.39
1	A	131	GLU	CD-OE2	5.30	1.31	1.25
1	A	429	TYR	CG-CD1	5.18	1.45	1.39
1	A	275	PHE	CG-CD2	5.03	1.46	1.38
1	B	304	SER	CB-OG	5.02	1.48	1.42
1	B	310[A]	GLN	CG-CD	5.00	1.62	1.51
1	B	310[B]	GLN	CG-CD	5.00	1.62	1.51

All (36) bond angle outliers are listed below:

Mol	Chain	Res	Type	Atoms	Z	Observed(°)	Ideal(°)
1	A	296[A]	ARG	NE-CZ-NH1	7.47	124.03	120.30
1	A	296[B]	ARG	NE-CZ-NH1	7.47	124.03	120.30
1	A	84	ASP	CB-CG-OD2	-6.72	112.25	118.30
1	B	251	ASP	CB-CG-OD2	6.35	124.02	118.30
1	B	50	ARG	NE-CZ-NH2	-5.95	117.32	120.30
1	B	296	ARG	NE-CZ-NH1	5.93	123.26	120.30
1	B	263[A]	ILE	CB-CA-C	-5.91	99.77	111.60
1	B	263[B]	ILE	CB-CA-C	-5.91	99.77	111.60
1	B	23	ASP	CB-CG-OD1	5.86	123.57	118.30
1	A	223	ARG	NE-CZ-NH1	5.79	123.19	120.30
1	A	354[A]	MET	CG-SD-CE	5.78	109.45	100.20
1	A	354[B]	MET	CG-SD-CE	5.78	109.45	100.20
1	A	250	ASP	CB-CG-OD1	5.77	123.49	118.30
1	A	179	ARG	NE-CZ-NH2	-5.71	117.45	120.30
1	B	217	ASP	CB-CG-OD1	5.69	123.42	118.30
1	B	223	ARG	NE-CZ-NH1	5.67	123.14	120.30
1	A	77	PHE	CB-CG-CD2	-5.64	116.85	120.80
1	A	199	ASP	CB-CG-OD1	5.63	123.37	118.30
1	A	63	ASP	CB-CG-OD2	-5.62	113.24	118.30
1	A	338	ASP	CB-CG-OD1	5.56	123.30	118.30
1	A	239	ASN	CB-CA-C	-5.53	99.33	110.40
1	B	425	ASP	CB-CG-OD2	-5.49	113.36	118.30
1	A	375	ARG	NE-CZ-NH2	-5.49	117.56	120.30
1	B	237	MET	CG-SD-CE	5.44	108.90	100.20
1	B	23	ASP	CB-CG-OD2	-5.44	113.41	118.30
1	B	242	ASP	CB-CG-OD2	-5.27	113.56	118.30
1	A	250	ASP	CB-CG-OD2	-5.20	113.62	118.30
1	A	63	ASP	CB-CG-OD1	5.19	122.97	118.30
1	B	66	ARG	NE-CZ-NH2	-5.19	117.71	120.30
1	A	199	ASP	CB-CG-OD2	-5.18	113.64	118.30
1	A	47	ARG	NE-CZ-NH2	5.17	122.89	120.30
1	A	251	ASP	CB-CG-OD1	5.16	122.95	118.30
1	A	42	PHE	CB-CG-CD2	-5.15	117.19	120.80
1	A	67	PHE	CB-CG-CD1	-5.10	117.23	120.80
1	A	238	LEU	CB-CG-CD2	5.09	119.66	111.00
1	B	305	TYR	CB-CG-CD1	-5.04	117.97	121.00

There are no chirality outliers.

There are no planarity outliers.

## 5.2 Too-close contacts

In the following table, the Non-H and H(model) columns list the number of non-hydrogen atoms and hydrogen atoms in the chain respectively. The H(added) column lists the number of hydrogen atoms added and optimized by MolProbity. The Clashes column lists the number of clashes within the asymmetric unit, whereas Symm-Clashes lists symmetry-related clashes.

Mol	Chain	Non-H	H(model)	H(added)	Clashes	Symm-Clashes
1	A	3817	0	3879	31	0
1	B	3851	0	3919	81	0
2	A	43	0	30	2	0
2	B	43	0	30	2	0
3	A	8	0	8	0	0
3	B	8	0	8	0	0
4	A	12	0	16	1	0
5	A	12	0	12	0	0
5	B	12	0	12	1	0
6	A	7	0	10	4	0
7	A	536	0	0	11	0
7	B	475	0	0	13	0
All	All	8824	0	7924	117	0

The all-atom clashscore is defined as the number of clashes found per 1000 atoms (including hydrogen atoms). The all-atom clashscore for this structure is 7.

All (117) close contacts within the same asymmetric unit are listed below, sorted by their clash magnitude.

Atom-1	Atom-2	Interatomic distance (Å)	Clash overlap (Å)
1:B:150[A]:LEU:HD11	1:B:174:ILE:CD1	1.30	1.58
1:B:150[A]:LEU:CD1	1:B:174:ILE:CD1	1.99	1.39
1:B:150[A]:LEU:CD1	1:B:174:ILE:HD13	1.56	1.35
1:B:309[A]:LYS:NZ	7:B:968:HOH:O	1.61	1.33
1:B:158[A]:PHE:CE1	1:B:258:ILE:HG12	1.78	1.17
1:B:150[A]:LEU:CD1	1:B:174:ILE:HD11	1.75	1.14
1:B:375[B]:ARG:NH2	5:B:503:MES:O2S	1.84	1.09
1:B:261:PHE:O	1:B:265[B]:GLY:N	1.87	1.07
1:B:150[A]:LEU:HD11	1:B:174:ILE:HD11	1.25	1.06
1:B:158[B]:PHE:CE2	1:B:262[B]:LEU:HD21	1.91	1.04
1:B:158[B]:PHE:HE2	1:B:262[B]:LEU:HD21	1.21	1.03
1:B:150[A]:LEU:HD12	1:B:174:ILE:HD13	1.46	0.98
1:B:150[A]:LEU:HD11	1:B:174:ILE:CG1	1.94	0.98
1:B:150[B]:LEU:HD13	1:B:266[B]:HIS:CE1	1.98	0.98
1:B:267[B]:GLU:CG	1:B:438[B]:THR:HG21	1.95	0.97

*Continued on next page...*

Continued from previous page...

Atom-1	Atom-2	Interatomic distance (Å)	Clash overlap (Å)
1:B:267[B]:GLU:HG2	1:B:438[B]:THR:HG21	1.50	0.93
1:B:150[A]:LEU:HD11	1:B:174:ILE:HD13	1.18	0.93
1:B:150[B]:LEU:CD1	1:B:266[B]:HIS:CE1	2.53	0.92
1:B:158[A]:PHE:HE1	1:B:258:ILE:HG12	1.31	0.88
1:B:150[B]:LEU:HD13	1:B:266[B]:HIS:CG	2.08	0.87
1:A:267[B]:GLU:OE2	7:A:1021:HOH:O	1.95	0.85
1:B:370:ASP:OD2	1:B:375[A]:ARG:NH1	2.10	0.84
1:B:150[B]:LEU:HD13	1:B:266[B]:HIS:ND1	1.91	0.84
1:B:150[A]:LEU:HD13	1:B:174:ILE:HD11	1.62	0.81
1:B:233[B]:LEU:HD21	1:B:261:PHE:CD2	2.15	0.80
1:A:118[B]:MET:SD	7:A:866:HOH:O	2.40	0.79
1:A:3:LYS:HE2	7:A:1004:HOH:O	1.81	0.79
1:A:327:THR:O	1:A:438[B]:THR:HG23	1.87	0.75
1:A:438[B]:THR:HG22	1:A:439:LEU:N	2.01	0.75
1:B:185:MET:HE1	1:B:437:LEU:HD23	1.69	0.74
1:B:150[B]:LEU:HD13	1:B:266[B]:HIS:CD2	2.22	0.74
1:B:118[A]:MET:SD	7:B:802:HOH:O	2.46	0.73
1:B:375[A]:ARG:NE	7:B:877:HOH:O	2.13	0.73
1:A:136:ASP:O	1:A:447:LYS:NZ	2.24	0.71
1:B:261:PHE:O	1:B:265[B]:GLY:CA	2.39	0.69
1:B:267[B]:GLU:HG2	1:B:438[B]:THR:CG2	2.21	0.69
1:B:158[B]:PHE:HE2	1:B:262[B]:LEU:CD2	2.01	0.68
1:B:150[B]:LEU:HD11	1:B:266[B]:HIS:CE1	2.29	0.67
1:B:177:MET:SD	1:B:263[B]:ILE:HG12	2.35	0.67
1:A:3:LYS:CE	7:A:1004:HOH:O	2.41	0.66
1:B:233[B]:LEU:HD21	1:B:261:PHE:CE2	2.32	0.65
1:B:153[A]:ILE:HG13	7:B:812:HOH:O	1.97	0.64
1:B:2:ILE:HD13	1:B:346[A]:PRO:HG3	1.81	0.62
1:B:150[A]:LEU:HD11	1:B:174:ILE:HG12	1.80	0.62
1:B:267[B]:GLU:HG3	1:B:438[B]:THR:HG21	1.77	0.61
1:A:349:LYS:HE2	6:A:505:PEG:H32	1.83	0.60
1:B:266[A]:HIS:CE1	1:B:267[A]:GLU:OE2	2.54	0.59
1:A:23[A]:ASP:OD2	7:A:1061:HOH:O	2.15	0.59
1:B:150[B]:LEU:HD13	1:B:266[B]:HIS:NE2	2.18	0.59
1:A:153[A]:ILE:HG13	7:A:978:HOH:O	2.03	0.58
1:A:350:GLY:HA2	6:A:505:PEG:H41	1.84	0.58
1:A:158[B]:PHE:CE1	1:A:258:ILE:HG12	2.39	0.57
6:A:505:PEG:H11	7:A:768:HOH:O	2.03	0.56
1:B:109:GLN:NE2	1:B:404[B]:GLN:HG3	2.20	0.56
1:A:438[B]:THR:HG22	1:A:439:LEU:H	1.68	0.56
1:B:177:MET:CE	1:B:266[B]:HIS:HE1	2.19	0.56

Continued on next page...

*Continued from previous page...*

Atom-1	Atom-2	Interatomic distance (Å)	Clash overlap (Å)
1:B:261:PHE:O	1:B:265[B]:GLY:HA3	2.05	0.56
1:B:375[A]:ARG:CG	7:B:877:HOH:O	2.54	0.55
1:B:49[A]:THR:CG2	1:B:354[A]:MET:HG2	2.36	0.55
1:B:385:ILE:HD12	7:B:957:HOH:O	2.07	0.55
1:A:150[A]:LEU:HD13	1:A:174:ILE:HD13	1.89	0.55
1:B:103:LEU:HD22	1:B:233[B]:LEU:CD1	2.37	0.55
1:B:158[B]:PHE:CZ	1:B:262[B]:LEU:HD21	2.39	0.54
1:B:185:MET:CE	1:B:437:LEU:HD23	2.37	0.54
1:B:23:ASP:OD2	7:B:1004:HOH:O	2.19	0.52
1:A:350:GLY:CA	6:A:505:PEG:H41	2.39	0.52
1:B:375[A]:ARG:HG2	7:B:877:HOH:O	2.09	0.52
1:A:438[B]:THR:CG2	1:A:439:LEU:H	2.22	0.52
1:B:150[B]:LEU:CD1	1:B:266[B]:HIS:ND1	2.68	0.52
1:B:387:GLN:HG2	1:B:388:HIS:CD2	2.47	0.50
1:A:438[B]:THR:CG2	1:A:439:LEU:N	2.67	0.50
1:B:181:LEU:HD11	1:B:263[B]:ILE:HG23	1.92	0.50
1:B:185:MET:HE2	1:B:437:LEU:HA	1.94	0.49
1:B:267[A]:GLU:HG3	7:B:963:HOH:O	2.11	0.49
1:A:148[B]:LEU:HD11	1:A:413:VAL:HG21	1.94	0.49
1:A:296[A]:ARG:NH1	7:A:995:HOH:O	2.40	0.49
1:B:263[A]:ILE:O	1:B:263[A]:ILE:HG22	2.11	0.49
1:B:375[A]:ARG:CD	7:B:877:HOH:O	2.60	0.49
1:B:262[B]:LEU:O	1:B:266[B]:HIS:ND1	2.39	0.48
1:B:177:MET:HE1	1:B:266[B]:HIS:HE1	1.78	0.48
1:A:100:HIS:HE1	4:A:506:GOL:O2	1.96	0.48
1:A:51:TYR:CE2	1:A:354[B]:MET:HG2	2.49	0.47
1:B:258:ILE:O	1:B:262[B]:LEU:HG	2.14	0.47
1:A:31[A]:LYS:HE2	7:A:746:HOH:O	2.15	0.47
1:B:173:PHE:CE2	1:B:262[B]:LEU:HD13	2.50	0.47
2:A:501:HEM:HMC2	2:A:501:HEM:HBC2	1.97	0.46
2:B:501:HEM:HBC2	2:B:501:HEM:HMC2	1.96	0.46
1:A:153[B]:ILE:HG23	1:A:262:LEU:HD23	1.96	0.46
1:B:195:ASP:HA	1:B:196:PRO:HD3	1.83	0.45
1:B:103:LEU:HD22	1:B:233[B]:LEU:HD11	1.98	0.45
2:A:501:HEM:HBC2	2:A:501:HEM:CMC	2.47	0.45
1:B:173:PHE:HB2	1:B:215:LEU:HD22	1.98	0.44
1:B:250:ASP:O	1:B:254:ILE:HG13	2.17	0.44
1:B:309[B]:LYS:HA	1:B:309[B]:LYS:HD2	1.74	0.44
1:A:150[B]:LEU:HG	1:A:174:ILE:HD13	1.99	0.44
1:A:23[B]:ASP:HB3	1:A:24:LYS:HG3	1.99	0.44
1:B:1:THR:HG22	1:B:2:ILE:N	2.32	0.44

*Continued on next page...*

Continued from previous page...

Atom-1	Atom-2	Interatomic distance (Å)	Clash overlap (Å)
1:B:233[B]:LEU:HD11	1:B:261:PHE:CE2	2.53	0.44
1:B:35:GLU:HG3	7:B:1030:HOH:O	2.17	0.44
2:B:501:HEM:HBC2	2:B:501:HEM:CMC	2.48	0.43
1:B:306:LYS:HB2	1:B:306:LYS:HE2	1.76	0.43
1:B:177:MET:SD	1:B:263[B]:ILE:CG1	3.05	0.43
1:B:267[A]:GLU:HG3	7:B:1074:HOH:O	2.18	0.43
1:A:404[B]:GLN:NE2	7:A:981:HOH:O	2.50	0.43
1:B:289[A]:LYS:HG3	7:B:824:HOH:O	2.18	0.43
1:A:31[A]:LYS:HG3	7:A:746:HOH:O	2.19	0.42
1:B:266[A]:HIS:CE1	1:B:267[A]:GLU:HG2	2.54	0.42
1:B:354[B]:MET:HE3	1:B:354[B]:MET:HB2	1.65	0.42
1:B:2:ILE:HD13	1:B:346[B]:PRO:HG2	2.02	0.42
1:B:103:LEU:CD2	1:B:233[B]:LEU:HD12	2.50	0.42
1:B:266[A]:HIS:HE1	1:B:267[A]:GLU:OE2	2.03	0.41
1:B:104:LEU:HB3	1:B:105:PRO:HD3	2.03	0.41
1:A:150[B]:LEU:HG	1:A:174:ILE:CD1	2.51	0.41
1:A:367:TRP:HB2	1:A:371:VAL:HG12	2.02	0.41
1:A:104[B]:LEU:HA	1:A:104[B]:LEU:HD23	1.78	0.41
1:B:215:LEU:O	1:B:219:ILE:HG12	2.21	0.41
1:A:122:ILE:HG22	1:A:148[B]:LEU:HD23	2.03	0.41

There are no symmetry-related clashes.

## 5.3 Torsion angles [i](#)

### 5.3.1 Protein backbone [i](#)

In the following table, the Percentiles column shows the percent Ramachandran outliers of the chain as a percentile score with respect to all X-ray entries followed by that with respect to entries of similar resolution.

The Analysed column shows the number of residues for which the backbone conformation was analysed, and the total number of residues.

Mol	Chain	Analysed	Favoured	Allowed	Outliers	Percentiles	
1	A	481/455 (106%)	466 (97%)	15 (3%)	0	100	100
1	B	486/455 (107%)	468 (96%)	18 (4%)	0	100	100
All	All	967/910 (106%)	934 (97%)	33 (3%)	0	100	100

There are no Ramachandran outliers to report.

### 5.3.2 Protein sidechains [i](#)

In the following table, the Percentiles column shows the percent sidechain outliers of the chain as a percentile score with respect to all X-ray entries followed by that with respect to entries of similar resolution.

The Analysed column shows the number of residues for which the sidechain conformation was analysed, and the total number of residues.

Mol	Chain	Analysed	Rotameric	Outliers	Percentiles	
1	A	424/397 (107%)	419 (99%)	5 (1%)	71	47
1	B	428/397 (108%)	415 (97%)	13 (3%)	41	10
All	All	852/794 (107%)	834 (98%)	18 (2%)	55	21

All (18) residues with a non-rotameric sidechain are listed below:

Mol	Chain	Res	Type
1	A	3	LYS
1	A	4	GLU
1	A	13	GLU
1	A	45	PRO
1	A	229	GLN
1	B	3	LYS
1	B	4	GLU
1	B	41	LYS
1	B	148	LEU
1	B	150[A]	LEU
1	B	150[B]	LEU
1	B	185	MET
1	B	192	ASN
1	B	194	ASP
1	B	230	SER
1	B	231	ASP
1	B	267[A]	GLU
1	B	267[B]	GLU

Sometimes sidechains can be flipped to improve hydrogen bonding and reduce clashes. All (4) such sidechains are listed below:

Mol	Chain	Res	Type
1	A	169	GLN
1	A	239	ASN
1	A	403	GLN
1	B	169	GLN



### 5.3.3 RNA [i](#)

There are no RNA molecules in this entry.

## 5.4 Non-standard residues in protein, DNA, RNA chains [i](#)

There are no non-standard protein/DNA/RNA residues in this entry.

## 5.5 Carbohydrates [i](#)

There are no monosaccharides in this entry.

## 5.6 Ligand geometry [i](#)

9 ligands are modelled in this entry.

In the following table, the Counts columns list the number of bonds (or angles) for which Mogul statistics could be retrieved, the number of bonds (or angles) that are observed in the model and the number of bonds (or angles) that are defined in the Chemical Component Dictionary. The Link column lists molecule types, if any, to which the group is linked. The Z score for a bond length (or angle) is the number of standard deviations the observed value is removed from the expected value. A bond length (or angle) with  $|Z| > 2$  is considered an outlier worth inspection. RMSZ is the root-mean-square of all Z scores of the bond lengths (or angles).

Mol	Type	Chain	Res	Link	Bond lengths			Bond angles		
					Counts	RMSZ	# Z  > 2	Counts	RMSZ	# Z  > 2
2	HEM	B	501	1,7	41,50,50	1.86	9 (21%)	45,82,82	2.62	14 (31%)
6	PEG	A	505	-	6,6,6	1.04	0	5,5,5	1.85	2 (40%)
2	HEM	A	501	1,7	41,50,50	1.89	9 (21%)	45,82,82	2.11	14 (31%)
5	MES	A	504	-	12,12,12	1.57	1 (8%)	14,16,16	2.24	5 (35%)
3	SYN	A	502	-	8,8,8	1.69	2 (25%)	9,9,9	0.84	0
5	MES	B	503	-	12,12,12	1.92	1 (8%)	14,16,16	2.72	6 (42%)
3	SYN	B	502	-	8,8,8	1.73	3 (37%)	9,9,9	2.33	3 (33%)
4	GOL	A	503	-	5,5,5	0.50	0	5,5,5	1.33	1 (20%)
4	GOL	A	506	-	5,5,5	0.57	0	5,5,5	1.02	0

In the following table, the Chirals column lists the number of chiral outliers, the number of chiral centers analysed, the number of these observed in the model and the number defined in the Chemical Component Dictionary. Similar counts are reported in the Torsion and Rings columns. '-' means no outliers of that kind were identified.

Mol	Type	Chain	Res	Link	Chirals	Torsions	Rings
2	HEM	B	501	1,7	-	2/12/54/54	-
6	PEG	A	505	-	-	2/4/4/4	-
2	HEM	A	501	1,7	-	2/12/54/54	-
5	MES	A	504	-	-	4/6/14/14	0/1/1/1
3	SYN	A	502	-	-	0/2/2/2	0/1/1/1
5	MES	B	503	-	-	3/6/14/14	0/1/1/1
3	SYN	B	502	-	-	2/2/2/2	0/1/1/1
4	GOL	A	503	-	-	3/4/4/4	-
4	GOL	A	506	-	-	0/4/4/4	-

All (25) bond length outliers are listed below:

Mol	Chain	Res	Type	Atoms	Z	Observed(Å)	Ideal(Å)
5	B	503	MES	C8-S	-6.06	1.68	1.77
2	B	501	HEM	C3D-C2D	5.47	1.48	1.36
2	A	501	HEM	C3D-C2D	4.94	1.47	1.36
5	A	504	MES	C8-S	-4.91	1.70	1.77
2	A	501	HEM	C3C-C2C	-4.44	1.34	1.40
2	B	501	HEM	C3C-C2C	-4.11	1.34	1.40
2	B	501	HEM	O2A-CGA	-3.83	1.17	1.30
2	A	501	HEM	CAA-C2A	3.82	1.57	1.52
3	A	502	SYN	CAA-CAB	3.54	1.52	1.29
2	B	501	HEM	FE-ND	3.39	2.13	1.96
2	A	501	HEM	O2D-CGD	-3.22	1.19	1.30
2	B	501	HEM	FE-NB	3.18	2.12	1.96
2	B	501	HEM	CAA-C2A	3.15	1.56	1.52
2	A	501	HEM	FE-ND	3.04	2.11	1.96
2	A	501	HEM	O2A-CGA	-3.00	1.20	1.30
3	B	502	SYN	CAA-CAB	2.77	1.47	1.29
2	A	501	HEM	C3B-C2B	-2.59	1.32	1.37
2	A	501	HEM	CAB-C3B	2.55	1.54	1.47
2	B	501	HEM	C3C-CAC	2.41	1.52	1.47
3	B	502	SYN	CAG-CAH	2.39	1.44	1.39
2	B	501	HEM	CHB-C1B	2.37	1.41	1.35
3	A	502	SYN	CAF-CAH	2.27	1.43	1.39
3	B	502	SYN	CAE-CAG	2.16	1.43	1.38
2	B	501	HEM	C4D-C3D	-2.14	1.41	1.45
2	A	501	HEM	CHB-C1B	2.13	1.40	1.35

All (45) bond angle outliers are listed below:

Mol	Chain	Res	Type	Atoms	Z	Observed(°)	Ideal(°)
2	B	501	HEM	C4C-CHD-C1D	6.83	131.57	122.56
2	B	501	HEM	C4D-ND-C1D	6.68	111.97	105.07
2	B	501	HEM	C1B-NB-C4B	6.31	111.59	105.07
2	A	501	HEM	C4B-CHC-C1C	6.18	130.72	122.56
5	B	503	MES	C5-N4-C3	6.10	122.57	108.83
2	B	501	HEM	C4B-CHC-C1C	6.01	130.49	122.56
5	B	503	MES	O1S-S-C8	5.70	113.78	106.92
2	A	501	HEM	C4C-CHD-C1D	5.57	129.91	122.56
5	A	504	MES	C7-N4-C5	4.86	123.67	111.23
3	B	502	SYN	CAC-CAD-CAF	4.81	127.52	120.19
2	A	501	HEM	CMA-C3A-C4A	-4.77	121.13	128.46
5	A	504	MES	C5-N4-C3	4.60	119.19	108.83
2	B	501	HEM	CMC-C2C-C3C	3.98	132.12	124.68
2	A	501	HEM	C4D-ND-C1D	3.96	109.16	105.07
5	B	503	MES	C7-N4-C3	3.68	120.64	111.23
2	B	501	HEM	C2B-C1B-NB	-3.61	105.56	109.84
2	B	501	HEM	C4B-C3B-C2B	3.47	109.87	107.11
2	B	501	HEM	CMA-C3A-C4A	-3.42	123.21	128.46
2	A	501	HEM	C4A-C3A-C2A	3.35	109.33	107.00
2	B	501	HEM	C4A-C3A-C2A	3.34	109.32	107.00
3	B	502	SYN	CAD-CAF-CAH	-3.29	116.67	120.65
5	A	504	MES	C2-C3-N4	3.07	114.75	110.10
2	A	501	HEM	CHC-C4B-C3B	3.07	129.26	124.57
6	A	505	PEG	O2-C2-C1	2.78	122.26	110.07
2	B	501	HEM	CMB-C2B-C1B	-2.73	120.87	125.04
2	A	501	HEM	CHD-C1D-ND	2.69	127.36	124.43
2	A	501	HEM	C3B-C2B-C1B	2.62	108.43	106.49
2	B	501	HEM	C3D-C4D-ND	-2.61	107.26	110.17
2	B	501	HEM	O1A-CGA-CBA	-2.60	114.72	123.08
2	A	501	HEM	CMC-C2C-C3C	2.59	129.53	124.68
2	A	501	HEM	C1B-NB-C4B	2.56	107.72	105.07
6	A	505	PEG	O2-C3-C4	2.56	121.32	110.07
2	B	501	HEM	CHC-C4B-C3B	2.48	128.36	124.57
5	B	503	MES	O1-C6-C5	-2.47	106.36	111.80
4	A	503	GOL	C3-C2-C1	-2.47	102.11	111.70
2	A	501	HEM	CMA-C3A-C2A	2.43	129.53	124.94
2	A	501	HEM	CMD-C2D-C1D	2.40	128.70	125.04
2	B	501	HEM	O1D-CGD-CBD	-2.32	115.63	123.08
5	A	504	MES	C7-N4-C3	2.31	117.14	111.23
5	B	503	MES	C7-N4-C5	2.17	116.79	111.23
5	A	504	MES	O1-C2-C3	-2.12	107.13	111.80
3	B	502	SYN	CAE-CAG-CAH	2.11	123.20	120.65
2	A	501	HEM	C4B-C3B-C2B	2.08	108.76	107.11

*Continued on next page...*

*Continued from previous page...*

Mol	Chain	Res	Type	Atoms	Z	Observed(°)	Ideal(°)
2	A	501	HEM	C2C-C3C-C4C	2.03	108.32	106.90
5	B	503	MES	O3S-S-O2S	-2.01	106.35	111.27

There are no chirality outliers.

All (18) torsion outliers are listed below:

Mol	Chain	Res	Type	Atoms
5	A	504	MES	C8-C7-N4-C5
5	A	504	MES	C7-C8-S-O2S
5	A	504	MES	C7-C8-S-O3S
3	B	502	SYN	CAA-CAB-CAH-CAF
3	B	502	SYN	CAA-CAB-CAH-CAG
6	A	505	PEG	O2-C3-C4-O4
4	A	503	GOL	C1-C2-C3-O3
6	A	505	PEG	O1-C1-C2-O2
4	A	503	GOL	O2-C2-C3-O3
5	B	503	MES	N4-C7-C8-S
5	B	503	MES	C8-C7-N4-C5
4	A	503	GOL	O1-C1-C2-O2
5	A	504	MES	C7-C8-S-O1S
5	B	503	MES	C7-C8-S-O2S
2	A	501	HEM	CAD-CBD-CGD-O1D
2	A	501	HEM	CAD-CBD-CGD-O2D
2	B	501	HEM	CAD-CBD-CGD-O2D
2	B	501	HEM	CAD-CBD-CGD-O1D

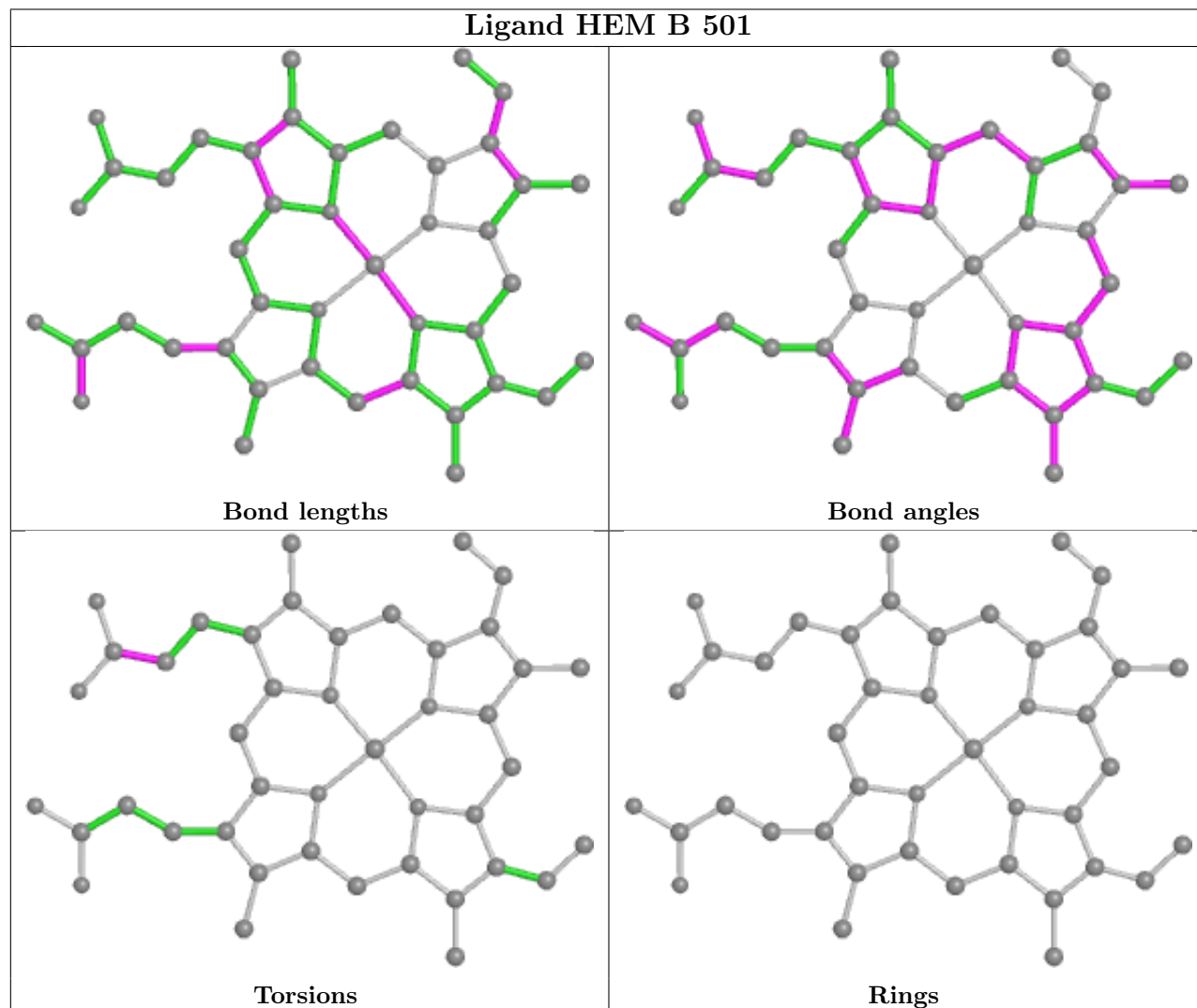
There are no ring outliers.

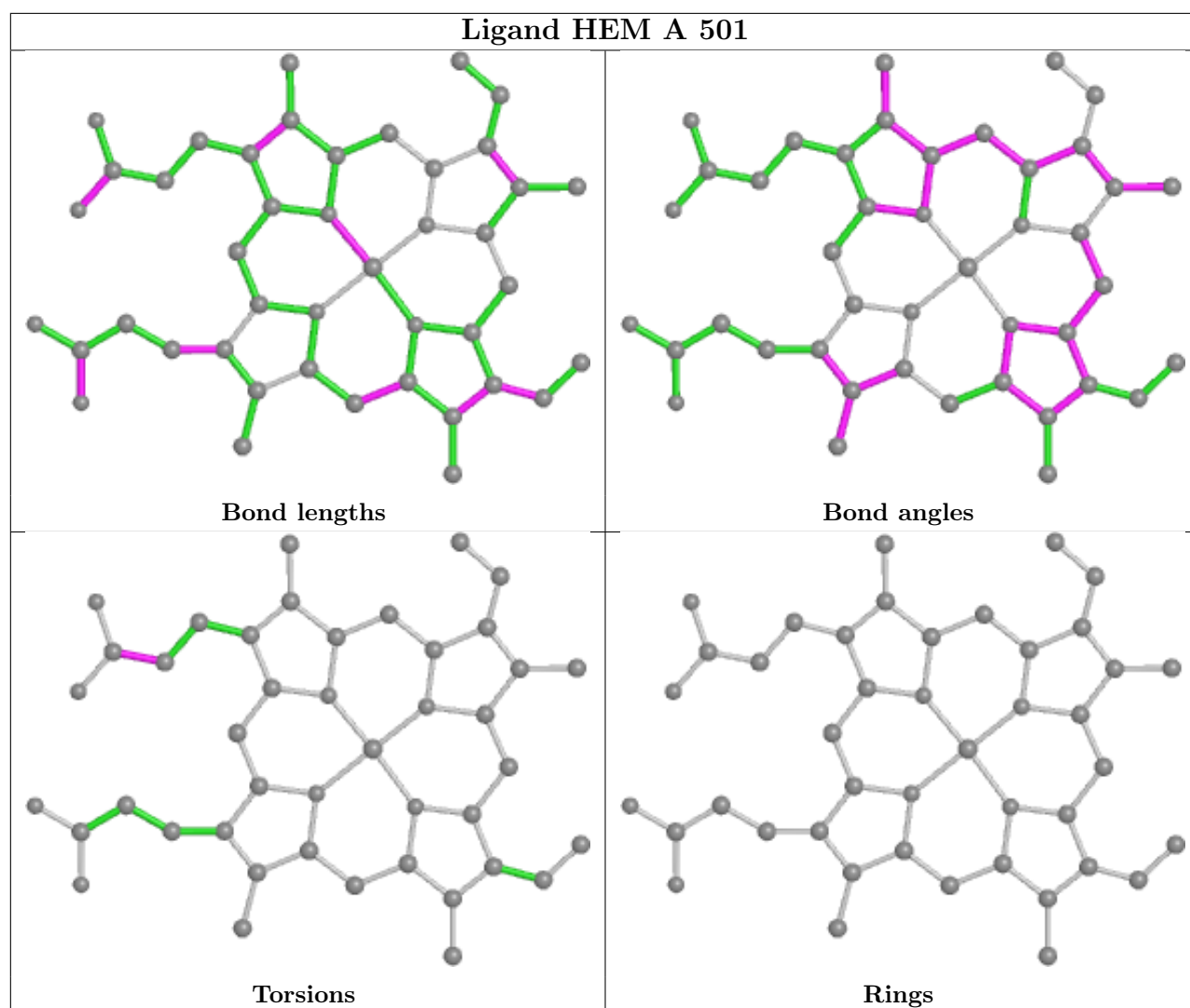
5 monomers are involved in 10 short contacts:

Mol	Chain	Res	Type	Clashes	Symm-Clashes
2	B	501	HEM	2	0
6	A	505	PEG	4	0
2	A	501	HEM	2	0
5	B	503	MES	1	0
4	A	506	GOL	1	0

The following is a two-dimensional graphical depiction of Mogul quality analysis of bond lengths, bond angles, torsion angles, and ring geometry for all instances of the Ligand of Interest. In addition, ligands with molecular weight > 250 and outliers as shown on the validation Tables will also be included. For torsion angles, if less than 5% of the Mogul distribution of torsion angles is within 10 degrees of the torsion angle in question, then that torsion angle is considered an outlier. Any bond that is central to one or more torsion angles identified as an outlier by Mogul will be

highlighted in the graph. For rings, the root-mean-square deviation (RMSD) between the ring in question and similar rings identified by Mogul is calculated over all ring torsion angles. If the average RMSD is greater than 60 degrees and the minimal RMSD between the ring in question and any Mogul-identified rings is also greater than 60 degrees, then that ring is considered an outlier. The outliers are highlighted in purple. The color gray indicates Mogul did not find sufficient equivalents in the CSD to analyse the geometry.





## 5.7 Other polymers [i](#)

There are no such residues in this entry.

## 5.8 Polymer linkage issues [i](#)

There are no chain breaks in this entry.

## 6 Fit of model and data

### 6.1 Protein, DNA and RNA chains

In the following table, the column labelled ‘#RSRZ > 2’ contains the number (and percentage) of RSRZ outliers, followed by percent RSRZ outliers for the chain as percentile scores relative to all X-ray entries and entries of similar resolution. The OWAB column contains the minimum, median, 95<sup>th</sup> percentile and maximum values of the occupancy-weighted average B-factor per residue. The column labelled ‘Q < 0.9’ lists the number of (and percentage) of residues with an average occupancy less than 0.9.

Mol	Chain	Analysed	<RSRZ>	#RSRZ>2	OWAB(Å <sup>2</sup> )	Q<0.9
1	A	455/455 (100%)	-0.12	15 (3%) 46 46	7, 13, 29, 107	0
1	B	455/455 (100%)	0.17	27 (5%) 22 20	7, 14, 51, 142	0
All	All	910/910 (100%)	0.02	42 (4%) 32 32	7, 14, 41, 142	0

All (42) RSRZ outliers are listed below:

Mol	Chain	Res	Type	RSRZ
1	B	191	ALA	9.7
1	A	1	THR	8.1
1	B	1	THR	7.5
1	B	2	ILE	6.1
1	B	193	PRO	5.3
1	B	192	ASN	5.2
1	B	198	TYR	5.1
1	B	196	PRO	4.9
1	B	194	ASP	4.6
1	B	199	ASP	4.6
1	B	136	ASP	4.6
1	A	2	ILE	4.5
1	B	3	LYS	4.5
1	A	191	ALA	4.3
1	B	195	ASP	4.2
1	B	4	GLU	4.1
1	B	197	ALA	3.9
1	B	201	ASN	3.7
1	B	225	ALA	3.6
1	B	229	GLN	3.4
1	B	265[A]	GLY	3.4
1	B	169	GLN	3.4
1	B	231	ASP	3.3
1	B	227	GLY	3.2

*Continued on next page...*

*Continued from previous page...*

Mol	Chain	Res	Type	RSRZ
1	A	4	GLU	3.0
1	A	225	ALA	2.9
1	A	3	LYS	2.9
1	B	158[A]	PHE	2.8
1	B	239	ASN	2.6
1	A	136	ASP	2.6
1	A	46	GLY	2.5
1	A	229	GLN	2.5
1	A	454	PRO	2.4
1	B	214	ASP	2.4
1	A	169	GLN	2.3
1	B	46	GLY	2.3
1	B	172	PRO	2.3
1	B	189	GLN	2.3
1	A	194	ASP	2.2
1	A	227	GLY	2.2
1	A	158[A]	PHE	2.1
1	A	192	ASN	2.1

## 6.2 Non-standard residues in protein, DNA, RNA chains [i](#)

There are no non-standard protein/DNA/RNA residues in this entry.

## 6.3 Carbohydrates [i](#)

There are no monosaccharides in this entry.

## 6.4 Ligands [i](#)

In the following table, the Atoms column lists the number of modelled atoms in the group and the number defined in the chemical component dictionary. The B-factors column lists the minimum, median, 95<sup>th</sup> percentile and maximum values of B factors of atoms in the group. The column labelled 'Q< 0.9' lists the number of atoms with occupancy less than 0.9.

Mol	Type	Chain	Res	Atoms	RSCC	RSR	B-factors(Å <sup>2</sup> )	Q<0.9
5	MES	A	504	12/12	0.43	0.26	30,43,80,123	0
5	MES	B	503	12/12	0.72	0.15	34,45,71,80	0
4	GOL	A	506	6/6	0.82	0.15	26,28,30,41	0
6	PEG	A	505	7/7	0.83	0.17	29,32,38,41	0
3	SYN	A	502	8/8	0.84	0.10	23,26,29,30	0

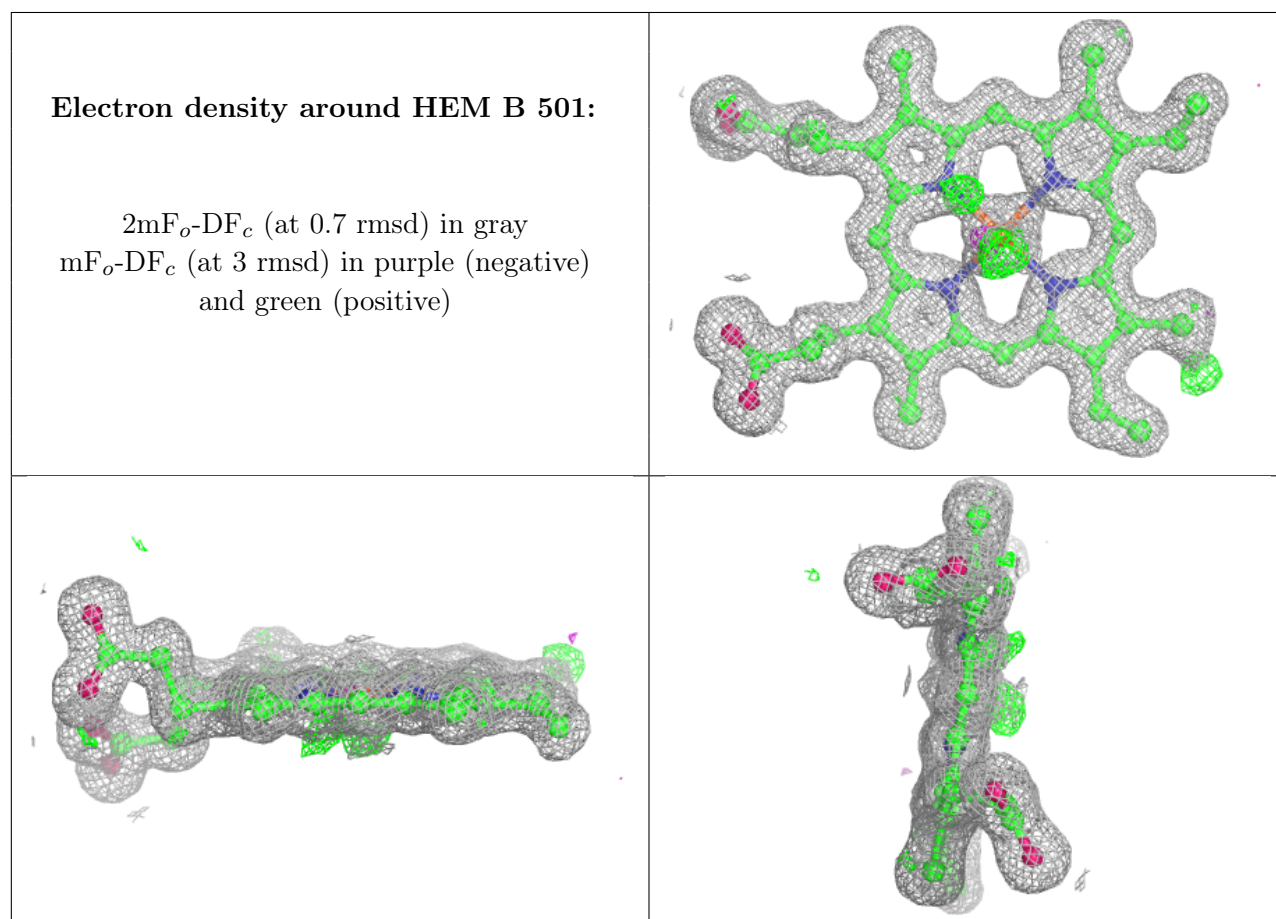
*Continued on next page...*

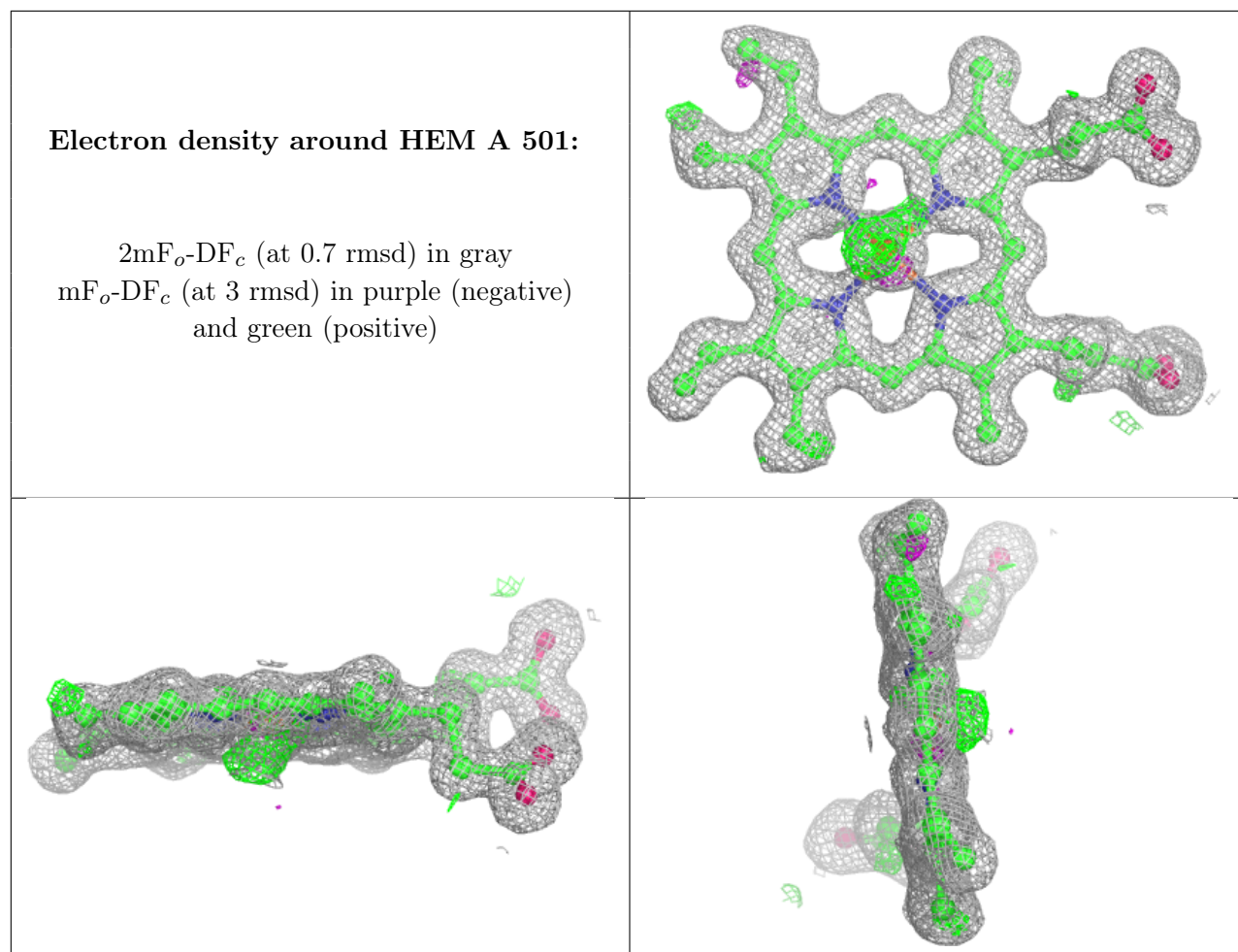


Continued from previous page...

Mol	Type	Chain	Res	Atoms	RSCC	RSR	B-factors( $\text{\AA}^2$ )	Q<0.9
3	SYN	B	502	8/8	0.87	0.12	26,31,41,43	0
4	GOL	A	503	6/6	0.94	0.15	21,34,45,47	0
2	HEM	B	501	43/43	0.98	0.07	6,8,10,22	0
2	HEM	A	501	43/43	0.99	0.06	5,7,10,17	0

The following is a graphical depiction of the model fit to experimental electron density of all instances of the Ligand of Interest. In addition, ligands with molecular weight > 250 and outliers as shown on the geometry validation Tables will also be included. Each fit is shown from different orientation to approximate a three-dimensional view.





## 6.5 Other polymers [i](#)

There are no such residues in this entry.