



Full wwPDB X-ray Structure Validation Report ⓘ

Sep 9, 2023 – 07:14 PM EDT

PDB ID : 4IJV
Title : Crystal structure of 11b-HSD1 double mutant (L262R, F278E) in complex with 3-[1-(4-chlorophenyl)cyclopropyl]-8-(2-fluorophenoxy)[1,2,4]triazolo[4,3-a]pyridine
Authors : Sheriff, S.
Deposited on : 2012-12-23
Resolution : 2.35 Å(reported)

This is a Full wwPDB X-ray Structure Validation Report for a publicly released PDB entry.

We welcome your comments at validation@mail.wwpdb.org

A user guide is available at

<https://www.wwpdb.org/validation/2017/XrayValidationReportHelp>

with specific help available everywhere you see the ⓘ symbol.

The types of validation reports are described at

<http://www.wwpdb.org/validation/2017/FAQs#types>.

The following versions of software and data (see [references ⓘ](#)) were used in the production of this report:

MolProbity : 4.02b-467
Mogul : 1.8.5 (274361), CSD as541be (2020)
Xtrriage (Phenix) : 1.13
EDS : 2.35.1
buster-report : 1.1.7 (2018)
Percentile statistics : 20191225.v01 (using entries in the PDB archive December 25th 2019)
Refmac : 5.8.0158
CCP4 : 7.0.044 (Gargrove)
Ideal geometry (proteins) : Engh & Huber (2001)
Ideal geometry (DNA, RNA) : Parkinson et al. (1996)
Validation Pipeline (wwPDB-VP) : 2.35.1

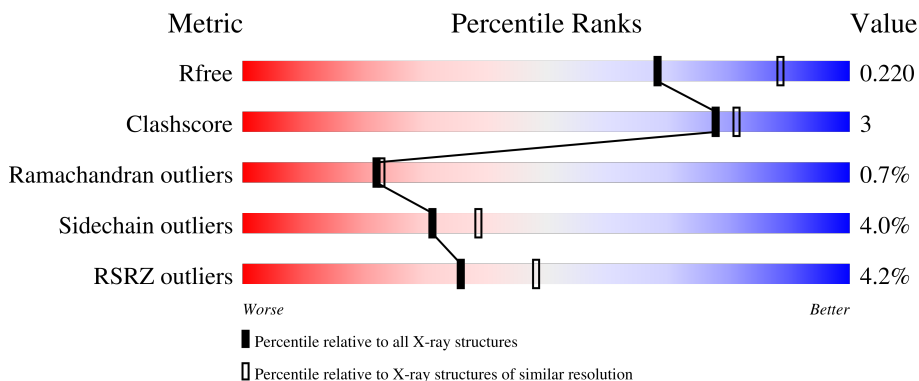
1 Overall quality at a glance i

The following experimental techniques were used to determine the structure:

X-RAY DIFFRACTION

The reported resolution of this entry is 2.35 Å.

Percentile scores (ranging between 0-100) for global validation metrics of the entry are shown in the following graphic. The table shows the number of entries on which the scores are based.



Metric	Whole archive (#Entries)	Similar resolution (#Entries, resolution range(Å))
R_{free}	130704	1164 (2.36-2.36)
Clashscore	141614	1232 (2.36-2.36)
Ramachandran outliers	138981	1211 (2.36-2.36)
Sidechain outliers	138945	1212 (2.36-2.36)
RSRZ outliers	127900	1150 (2.36-2.36)

The table below summarises the geometric issues observed across the polymeric chains and their fit to the electron density. The red, orange, yellow and green segments of the lower bar indicate the fraction of residues that contain outliers for ≥ 3 , 2, 1 and 0 types of geometric quality criteria respectively. A grey segment represents the fraction of residues that are not modelled. The numeric value for each fraction is indicated below the corresponding segment, with a dot representing fractions $\leq 5\%$. The upper red bar (where present) indicates the fraction of residues that have poor fit to the electron density. The numeric value is given above the bar.

Mol	Chain	Length	Quality of chain
1	A	286	 3% 84% 8% • 7%
1	B	286	 4% 89% 8% ••
1	D	286	 5% 88% 8% •
1	E	286	 4% 82% 10% • 8%

2 Entry composition i

There are 4 unique types of molecules in this entry. The entry contains 8918 atoms, of which 0 are hydrogens and 0 are deuteriums.

In the tables below, the ZeroOcc column contains the number of atoms modelled with zero occupancy, the AltConf column contains the number of residues with at least one atom in alternate conformation and the Trace column contains the number of residues modelled with at most 2 atoms.

- Molecule 1 is a protein called Corticosteroid 11-beta-dehydrogenase isozyme 1.

Mol	Chain	Residues	Atoms					ZeroOcc	AltConf	Trace
			Total	C	N	O	S			
1	A	266	Total 2055	C 1307	N 352	O 379	S 17	0	1	0
1	B	281	Total 2133	C 1351	N 365	O 397	S 20	0	0	0
1	D	275	Total 2089	C 1324	N 358	O 388	S 19	0	1	0
1	E	264	Total 2029	C 1290	N 346	O 376	S 17	0	0	0

There are 72 discrepancies between the modelled and reference sequences:

Chain	Residue	Modelled	Actual	Comment	Reference
A	7	GLY	-	expression tag	UNP P28845
A	8	SER	-	expression tag	UNP P28845
A	9	HIS	-	expression tag	UNP P28845
A	10	MET	-	expression tag	UNP P28845
A	12	SER	-	expression tag	UNP P28845
A	13	MET	-	expression tag	UNP P28845
A	14	THR	-	expression tag	UNP P28845
A	15	GLY	-	expression tag	UNP P28845
A	16	GLY	-	expression tag	UNP P28845
A	17	GLN	-	expression tag	UNP P28845
A	18	GLN	-	expression tag	UNP P28845
A	19	MET	-	expression tag	UNP P28845
A	20	GLY	-	expression tag	UNP P28845
A	21	ARG	-	expression tag	UNP P28845
A	22	GLY	-	expression tag	UNP P28845
A	23	SER	-	expression tag	UNP P28845
A	262	ARG	LEU	engineered mutation	UNP P28845
A	278	GLU	PHE	engineered mutation	UNP P28845
B	7	GLY	-	expression tag	UNP P28845
B	8	SER	-	expression tag	UNP P28845
B	9	HIS	-	expression tag	UNP P28845

Continued on next page...

Continued from previous page...

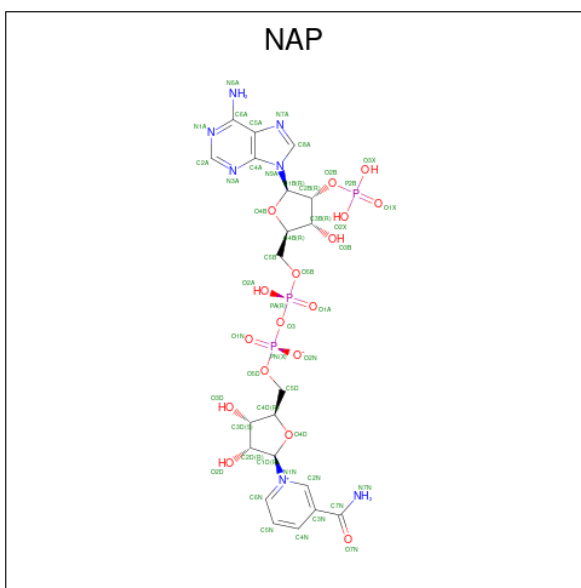
Chain	Residue	Modelled	Actual	Comment	Reference
B	10	MET	-	expression tag	UNP P28845
B	12	SER	-	expression tag	UNP P28845
B	13	MET	-	expression tag	UNP P28845
B	14	THR	-	expression tag	UNP P28845
B	15	GLY	-	expression tag	UNP P28845
B	16	GLY	-	expression tag	UNP P28845
B	17	GLN	-	expression tag	UNP P28845
B	18	GLN	-	expression tag	UNP P28845
B	19	MET	-	expression tag	UNP P28845
B	20	GLY	-	expression tag	UNP P28845
B	21	ARG	-	expression tag	UNP P28845
B	22	GLY	-	expression tag	UNP P28845
B	23	SER	-	expression tag	UNP P28845
B	262	ARG	LEU	engineered mutation	UNP P28845
B	278	GLU	PHE	engineered mutation	UNP P28845
D	7	GLY	-	expression tag	UNP P28845
D	8	SER	-	expression tag	UNP P28845
D	9	HIS	-	expression tag	UNP P28845
D	10	MET	-	expression tag	UNP P28845
D	12	SER	-	expression tag	UNP P28845
D	13	MET	-	expression tag	UNP P28845
D	14	THR	-	expression tag	UNP P28845
D	15	GLY	-	expression tag	UNP P28845
D	16	GLY	-	expression tag	UNP P28845
D	17	GLN	-	expression tag	UNP P28845
D	18	GLN	-	expression tag	UNP P28845
D	19	MET	-	expression tag	UNP P28845
D	20	GLY	-	expression tag	UNP P28845
D	21	ARG	-	expression tag	UNP P28845
D	22	GLY	-	expression tag	UNP P28845
D	23	SER	-	expression tag	UNP P28845
D	262	ARG	LEU	engineered mutation	UNP P28845
D	278	GLU	PHE	engineered mutation	UNP P28845
E	7	GLY	-	expression tag	UNP P28845
E	8	SER	-	expression tag	UNP P28845
E	9	HIS	-	expression tag	UNP P28845
E	10	MET	-	expression tag	UNP P28845
E	12	SER	-	expression tag	UNP P28845
E	13	MET	-	expression tag	UNP P28845
E	14	THR	-	expression tag	UNP P28845
E	15	GLY	-	expression tag	UNP P28845
E	16	GLY	-	expression tag	UNP P28845

Continued on next page...

Continued from previous page...

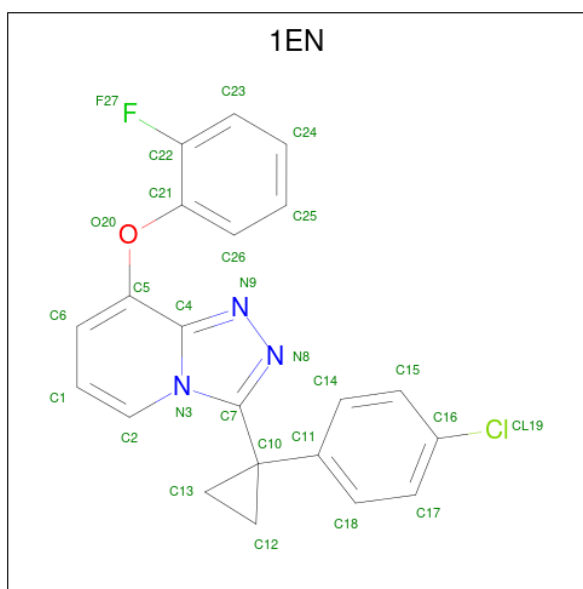
Chain	Residue	Modelled	Actual	Comment	Reference
E	17	GLN	-	expression tag	UNP P28845
E	18	GLN	-	expression tag	UNP P28845
E	19	MET	-	expression tag	UNP P28845
E	20	GLY	-	expression tag	UNP P28845
E	21	ARG	-	expression tag	UNP P28845
E	22	GLY	-	expression tag	UNP P28845
E	23	SER	-	expression tag	UNP P28845
E	262	ARG	LEU	engineered mutation	UNP P28845
E	278	GLU	PHE	engineered mutation	UNP P28845

- Molecule 2 is NADP NICOTINAMIDE-ADENINE-DINUCLEOTIDE PHOSPHATE (three-letter code: NAP) (formula: C₂₁H₂₈N₇O₁₇P₃).



Mol	Chain	Residues	Atoms				ZeroOcc	AltConf	
			Total	C	N	O			P
2	A	1	Total	C	N	O	P	0	0
			48	21	7	17	3		
2	B	1	Total	C	N	O	P	0	0
			48	21	7	17	3		
2	D	1	Total	C	N	O	P	0	0
			48	21	7	17	3		
2	E	1	Total	C	N	O	P	0	0
			48	21	7	17	3		

- Molecule 3 is 3-[1-(4-chlorophenyl)cyclopropyl]-8-(2-fluorophenoxy)[1,2,4]triazolo[4,3-a]pyridine (three-letter code: 1EN) (formula: C₂₁H₁₅ClFN₃O).



Mol	Chain	Residues	Atoms					ZeroOcc	AltConf	
			Total	C	Cl	F	N			O
3	A	1	Total 27	C 21	Cl 1	F 1	N 3	O 1	0	0
3	B	1	Total 27	C 21	Cl 1	F 1	N 3	O 1	0	0
3	D	1	Total 27	C 21	Cl 1	F 1	N 3	O 1	0	0
3	E	1	Total 27	C 21	Cl 1	F 1	N 3	O 1	0	0

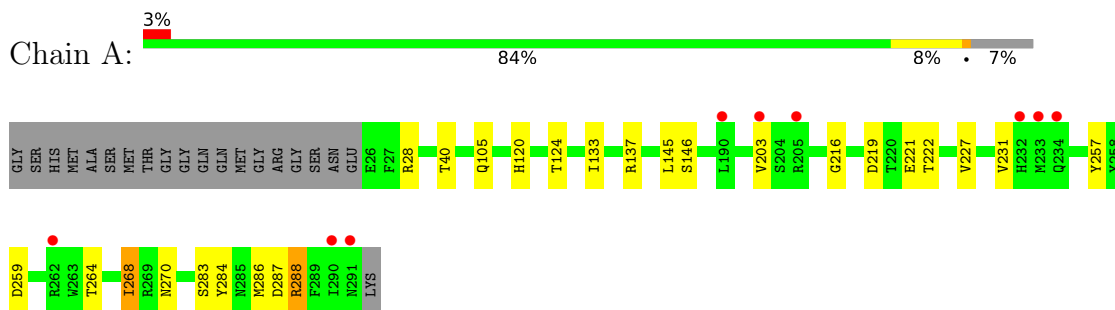
- Molecule 4 is water.

Mol	Chain	Residues	Atoms		ZeroOcc	AltConf
4	A	74	Total 74	O 74	0	0
4	B	75	Total 75	O 75	0	0
4	D	97	Total 97	O 97	0	0
4	E	66	Total 66	O 66	0	0

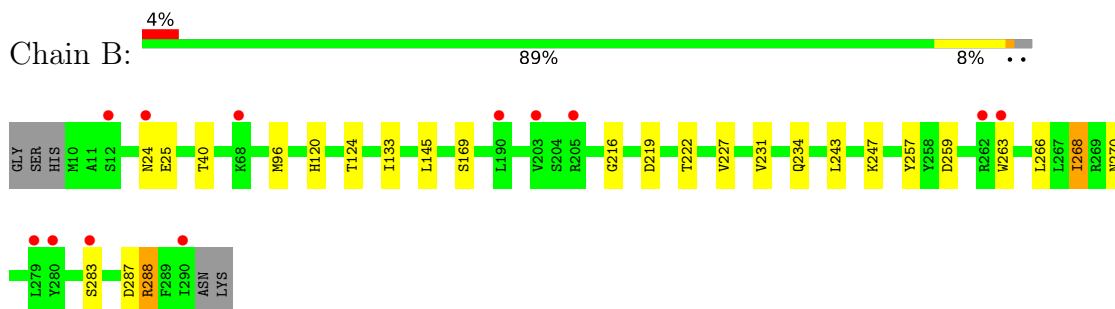
3 Residue-property plots [i](#)

These plots are drawn for all protein, RNA, DNA and oligosaccharide chains in the entry. The first graphic for a chain summarises the proportions of the various outlier classes displayed in the second graphic. The second graphic shows the sequence view annotated by issues in geometry and electron density. Residues are color-coded according to the number of geometric quality criteria for which they contain at least one outlier: green = 0, yellow = 1, orange = 2 and red = 3 or more. A red dot above a residue indicates a poor fit to the electron density ($RSRZ > 2$). Stretches of 2 or more consecutive residues without any outlier are shown as a green connector. Residues present in the sample, but not in the model, are shown in grey.

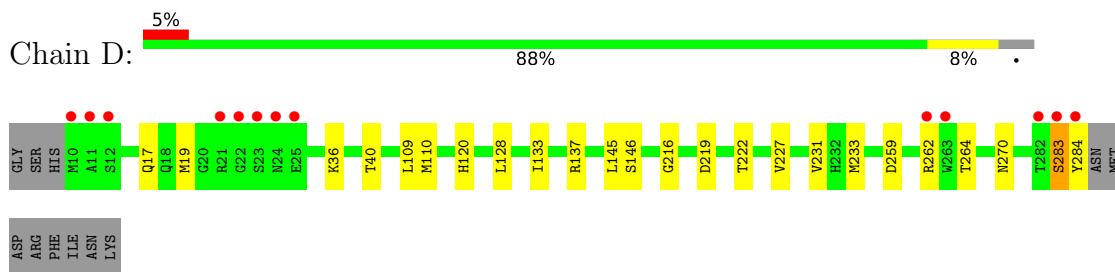
- Molecule 1: Corticosteroid 11-beta-dehydrogenase isozyme 1



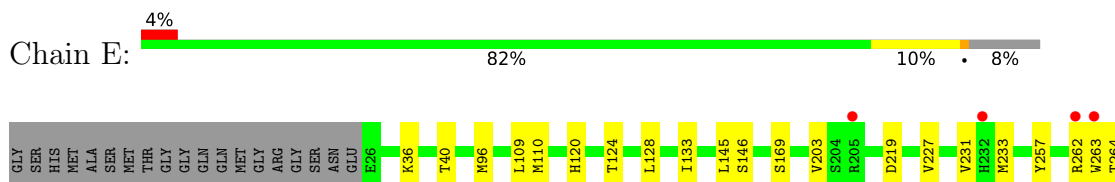
- Molecule 1: Corticosteroid 11-beta-dehydrogenase isozyme 1



- Molecule 1: Corticosteroid 11-beta-dehydrogenase isozyme 1



- Molecule 1: Corticosteroid 11-beta-dehydrogenase isozyme 1





4 Data and refinement statistics

Property	Value	Source
Space group	P 21 21 21	Depositor
Cell constants a, b, c, α , β , γ	74.40Å 94.00Å 167.80Å 90.00° 90.00° 90.00°	Depositor
Resolution (Å)	35.98 – 2.35 35.98 – 2.35	Depositor EDS
% Data completeness (in resolution range)	98.4 (35.98-2.35) 98.4 (35.98-2.35)	Depositor EDS
R_{merge}	0.04	Depositor
R_{sym}	(Not available)	Depositor
$\langle I/\sigma(I) \rangle$ ¹	11.11 (at 2.34Å)	Xtrriage
Refinement program	BUSTER-TNT BUSTER 2.11.2, BUSTER 2.11.2	Depositor
R, R_{free}	0.189 , 0.213 0.191 , 0.220	Depositor DCC
R_{free} test set	1046 reflections (2.14%)	wwPDB-VP
Wilson B-factor (Å ²)	24.1	Xtrriage
Anisotropy	0.235	Xtrriage
Bulk solvent k_{sol} (e/Å ³), B_{sol} (Å ²)	0.32 , 39.7	EDS
L-test for twinning ²	$\langle L \rangle = 0.48$, $\langle L^2 \rangle = 0.31$	Xtrriage
Estimated twinning fraction	No twinning to report.	Xtrriage
F_o, F_c correlation	0.94	EDS
Total number of atoms	8918	wwPDB-VP
Average B, all atoms (Å ²)	27.0	wwPDB-VP

Xtrriage's analysis on translational NCS is as follows: *The largest off-origin peak in the Patterson function is 3.25% of the height of the origin peak. No significant pseudotranslation is detected.*

¹Intensities estimated from amplitudes.

²Theoretical values of $\langle |L| \rangle$, $\langle L^2 \rangle$ for acentric reflections are 0.5, 0.333 respectively for untwinned datasets, and 0.375, 0.2 for perfectly twinned datasets.

5 Model quality [i](#)

5.1 Standard geometry [i](#)

Bond lengths and bond angles in the following residue types are not validated in this section: NAP, 1EN

The Z score for a bond length (or angle) is the number of standard deviations the observed value is removed from the expected value. A bond length (or angle) with $|Z| > 5$ is considered an outlier worth inspection. RMSZ is the root-mean-square of all Z scores of the bond lengths (or angles).

Mol	Chain	Bond lengths		Bond angles	
		RMSZ	# Z >5	RMSZ	# Z >5
1	A	0.45	0/2093	0.67	0/2824
1	B	0.46	0/2167	0.70	1/2921 (0.0%)
1	D	0.47	0/2126	0.67	0/2867
1	E	0.47	0/2063	0.69	0/2784
All	All	0.46	0/8449	0.68	1/11396 (0.0%)

There are no bond length outliers.

All (1) bond angle outliers are listed below:

Mol	Chain	Res	Type	Atoms	Z	Observed(°)	Ideal(°)
1	B	24	ASN	C-N-CA	8.13	142.02	121.70

There are no chirality outliers.

There are no planarity outliers.

5.2 Too-close contacts [i](#)

In the following table, the Non-H and H(model) columns list the number of non-hydrogen atoms and hydrogen atoms in the chain respectively. The H(added) column lists the number of hydrogen atoms added and optimized by MolProbity. The Clashes column lists the number of clashes within the asymmetric unit, whereas Symm-Clashes lists symmetry-related clashes.

Mol	Chain	Non-H	H(model)	H(added)	Clashes	Symm-Clashes
1	A	2055	0	2098	12	0
1	B	2133	0	2162	12	0
1	D	2089	0	2120	17	0
1	E	2029	0	2065	19	0
2	A	48	0	25	0	0
2	B	48	0	25	1	0

Continued on next page...

Continued from previous page...

Mol	Chain	Non-H	H(model)	H(added)	Clashes	Symm-Clashes
2	D	48	0	25	0	0
2	E	48	0	25	1	0
3	A	27	0	15	3	0
3	B	27	0	15	3	0
3	D	27	0	15	1	0
3	E	27	0	15	1	0
4	A	74	0	0	0	0
4	B	75	0	0	0	0
4	D	97	0	0	0	0
4	E	66	0	0	0	0
All	All	8918	0	8605	49	0

The all-atom clashscore is defined as the number of clashes found per 1000 atoms (including hydrogen atoms). The all-atom clashscore for this structure is 3.

All (49) close contacts within the same asymmetric unit are listed below, sorted by their clash magnitude.

Atom-1	Atom-2	Interatomic distance (Å)	Clash overlap (Å)
1:E:227:VAL:HB	1:E:231:VAL:HB	1.61	0.82
1:B:227:VAL:HB	1:B:231:VAL:HB	1.77	0.67
1:D:283:SER:HB3	1:E:233:MET:HG2	1.79	0.65
1:D:222:THR:HG22	3:D:302:1EN:H13	1.82	0.60
1:B:222:THR:HG22	3:B:302:1EN:H12	1.89	0.55
1:E:124:THR:O	3:E:302:1EN:H14	2.07	0.54
1:B:124:THR:O	3:B:302:1EN:H14	2.07	0.54
1:B:263:TRP:HH2	1:E:278:GLU:HG2	1.73	0.54
1:E:264:THR:O	1:E:268:ILE:HG13	2.09	0.52
1:E:203:VAL:HG21	1:E:286:MET:SD	2.50	0.52
1:D:40:THR:OG1	1:D:120:HIS:HD2	1.93	0.52
1:D:284:TYR:HB3	1:E:231:VAL:HG22	1.92	0.51
1:D:231:VAL:HG12	1:D:233:MET:HG2	1.92	0.51
1:E:40:THR:OG1	1:E:120:HIS:HD2	1.94	0.51
1:D:227:VAL:HB	1:D:231:VAL:HB	1.93	0.51
1:D:283:SER:HB3	1:E:233:MET:CG	2.41	0.51
1:A:40:THR:OG1	1:A:120:HIS:HD2	1.94	0.50
1:A:120:HIS:HE1	1:A:146:SER:OG	1.96	0.49
1:E:120:HIS:HE1	1:E:146:SER:OG	1.96	0.49
1:A:203:VAL:HG11	1:A:286:MET:HE3	1.96	0.48
1:D:264:THR:HG23	1:E:280:TYR:OH	2.12	0.48
1:B:40:THR:OG1	1:B:120:HIS:HD2	1.96	0.47
1:B:222:THR:HG22	3:B:302:1EN:C23	2.44	0.47

Continued on next page...

Continued from previous page...

Atom-1	Atom-2	Interatomic distance (Å)	Clash overlap (Å)
1:E:36:LYS:HG2	1:E:110:MET:HB3	1.96	0.47
1:D:128:LEU:HD21	1:E:286:MET:CE	2.45	0.47
1:D:264:THR:HA	1:E:276:LEU:HD21	1.97	0.47
1:B:257:TYR:CD1	1:B:268:ILE:HD13	2.50	0.47
1:E:257:TYR:CD1	1:E:268:ILE:HD13	2.51	0.45
1:D:231:VAL:CG1	1:D:233:MET:HG2	2.46	0.45
1:A:227:VAL:HB	1:A:231:VAL:HB	1.99	0.45
1:B:169:SER:O	2:B:301:NAP:H6N	2.17	0.45
1:D:36:LYS:HG2	1:D:110:MET:HB3	1.99	0.45
1:A:264:THR:O	1:A:268:ILE:HG13	2.18	0.44
1:A:137:ARG:HH22	1:B:96:MET:HG3	1.83	0.44
1:D:216:GLY:HA3	1:D:259:ASP:OD1	2.18	0.43
1:D:128:LEU:HD21	1:E:286:MET:HE2	2.01	0.43
1:B:216:GLY:HA3	1:B:259:ASP:OD1	2.20	0.42
1:A:284:TYR:CE1	1:A:286:MET:HE2	2.54	0.42
1:B:263:TRP:CH2	1:E:278:GLU:HG2	2.52	0.42
1:D:17:GLN:HE21	1:D:19:MET:HB2	1.85	0.42
1:A:216:GLY:HA3	1:A:259:ASP:OD1	2.19	0.42
1:A:222:THR:HG22	3:A:302:1EN:H12	2.02	0.41
1:E:169:SER:O	2:E:301:NAP:H6N	2.21	0.41
1:D:137:ARG:HH22	1:E:96:MET:HG3	1.84	0.41
1:A:124:THR:HG23	3:A:302:1EN:C25	2.49	0.41
1:B:243:LEU:HG	1:B:247:LYS:HE3	2.03	0.40
1:A:257:TYR:CD1	1:A:268:ILE:HD13	2.57	0.40
1:D:120:HIS:HE1	1:D:146:SER:OG	2.05	0.40
1:A:124:THR:O	3:A:302:1EN:H14	2.22	0.40

There are no symmetry-related clashes.

5.3 Torsion angles [i](#)

5.3.1 Protein backbone [i](#)

In the following table, the Percentiles column shows the percent Ramachandran outliers of the chain as a percentile score with respect to all X-ray entries followed by that with respect to entries of similar resolution.

The Analysed column shows the number of residues for which the backbone conformation was analysed, and the total number of residues.

Mol	Chain	Analysed	Favoured	Allowed	Outliers	Percentiles	
1	A	265/286 (93%)	256 (97%)	7 (3%)	2 (1%)	19	20
1	B	279/286 (98%)	265 (95%)	11 (4%)	3 (1%)	14	13
1	D	274/286 (96%)	265 (97%)	8 (3%)	1 (0%)	34	38
1	E	262/286 (92%)	252 (96%)	8 (3%)	2 (1%)	19	20
All	All	1080/1144 (94%)	1038 (96%)	34 (3%)	8 (1%)	22	23

All (8) Ramachandran outliers are listed below:

Mol	Chain	Res	Type
1	B	25	GLU
1	B	288	ARG
1	E	288	ARG
1	A	288	ARG
1	A	219	ASP
1	B	219	ASP
1	D	219	ASP
1	E	219	ASP

5.3.2 Protein sidechains [i](#)

In the following table, the Percentiles column shows the percent sidechain outliers of the chain as a percentile score with respect to all X-ray entries followed by that with respect to entries of similar resolution.

The Analysed column shows the number of residues for which the sidechain conformation was analysed, and the total number of residues.

Mol	Chain	Analysed	Rotameric	Outliers	Percentiles	
1	A	224/237 (94%)	214 (96%)	10 (4%)	27	33
1	B	229/237 (97%)	220 (96%)	9 (4%)	32	40
1	D	224/237 (94%)	218 (97%)	6 (3%)	44	55
1	E	220/237 (93%)	209 (95%)	11 (5%)	24	28
All	All	897/948 (95%)	861 (96%)	36 (4%)	31	39

All (36) residues with a non-rotameric sidechain are listed below:

Mol	Chain	Res	Type
1	A	28	ARG
1	A	105	GLN
1	A	133	ILE

Continued on next page...

Continued from previous page...

Mol	Chain	Res	Type
1	A	145	LEU
1	A	221	GLU
1	A	268	ILE
1	A	270	ASN
1	A	283	SER
1	A	287	ASP
1	A	288	ARG
1	B	133	ILE
1	B	145	LEU
1	B	234	GLN
1	B	266	LEU
1	B	268	ILE
1	B	270	ASN
1	B	283	SER
1	B	287	ASP
1	B	288	ARG
1	D	109	LEU
1	D	133	ILE
1	D	145	LEU
1	D	262	ARG
1	D	270	ASN
1	D	283	SER
1	E	109	LEU
1	E	128	LEU
1	E	133	ILE
1	E	145	LEU
1	E	262	ARG
1	E	263	TRP
1	E	266	LEU
1	E	268	ILE
1	E	270	ASN
1	E	287	ASP
1	E	288	ARG

Sometimes sidechains can be flipped to improve hydrogen bonding and reduce clashes. All (10) such sidechains are listed below:

Mol	Chain	Res	Type
1	A	119	ASN
1	A	120	HIS
1	B	119	ASN
1	B	120	HIS
1	B	285	ASN

Continued on next page...

Continued from previous page...

Mol	Chain	Res	Type
1	D	17	GLN
1	D	119	ASN
1	D	120	HIS
1	E	119	ASN
1	E	120	HIS

5.3.3 RNA [i](#)

There are no RNA molecules in this entry.

5.4 Non-standard residues in protein, DNA, RNA chains [i](#)

There are no non-standard protein/DNA/RNA residues in this entry.

5.5 Carbohydrates [i](#)

There are no monosaccharides in this entry.

5.6 Ligand geometry [i](#)

8 ligands are modelled in this entry.

In the following table, the Counts columns list the number of bonds (or angles) for which Mogul statistics could be retrieved, the number of bonds (or angles) that are observed in the model and the number of bonds (or angles) that are defined in the Chemical Component Dictionary. The Link column lists molecule types, if any, to which the group is linked. The Z score for a bond length (or angle) is the number of standard deviations the observed value is removed from the expected value. A bond length (or angle) with $|Z| > 2$ is considered an outlier worth inspection. RMSZ is the root-mean-square of all Z scores of the bond lengths (or angles).

Mol	Type	Chain	Res	Link	Bond lengths			Bond angles		
					Counts	RMSZ	# Z > 2	Counts	RMSZ	# Z > 2
3	1EN	A	302	-	29,31,31	1.78	6 (20%)	33,46,46	0.96	2 (6%)
3	1EN	D	302	-	29,31,31	1.69	5 (17%)	33,46,46	0.91	0
2	NAP	A	301	-	45,52,52	1.02	1 (2%)	56,80,80	0.82	2 (3%)
2	NAP	E	301	-	45,52,52	1.02	1 (2%)	56,80,80	0.87	3 (5%)
3	1EN	B	302	-	29,31,31	1.73	4 (13%)	33,46,46	0.91	2 (6%)
2	NAP	D	301	-	45,52,52	1.13	2 (4%)	56,80,80	0.84	2 (3%)
3	1EN	E	302	-	29,31,31	1.69	5 (17%)	33,46,46	0.82	0

Mol	Type	Chain	Res	Link	Bond lengths			Bond angles		
					Counts	RMSZ	# Z > 2	Counts	RMSZ	# Z > 2
2	NAP	B	301	-	45,52,52	0.89	1 (2%)	56,80,80	0.85	2 (3%)

In the following table, the Chirals column lists the number of chiral outliers, the number of chiral centers analysed, the number of these observed in the model and the number defined in the Chemical Component Dictionary. Similar counts are reported in the Torsion and Rings columns. '-' means no outliers of that kind were identified.

Mol	Type	Chain	Res	Link	Chirals	Torsions	Rings
3	1EN	A	302	-	-	3/10/20/20	0/5/5/5
3	1EN	D	302	-	-	1/10/20/20	0/5/5/5
2	NAP	A	301	-	-	1/31/67/67	0/5/5/5
2	NAP	E	301	-	-	6/31/67/67	0/5/5/5
3	1EN	B	302	-	-	0/10/20/20	0/5/5/5
2	NAP	D	301	-	-	2/31/67/67	0/5/5/5
3	1EN	E	302	-	-	2/10/20/20	0/5/5/5
2	NAP	B	301	-	-	5/31/67/67	0/5/5/5

All (25) bond length outliers are listed below:

Mol	Chain	Res	Type	Atoms	Z	Observed(Å)	Ideal(Å)
2	D	301	NAP	C2N-N1N	6.32	1.42	1.35
2	E	301	NAP	C2N-N1N	5.77	1.42	1.35
2	A	301	NAP	C2N-N1N	5.48	1.41	1.35
3	B	302	1EN	C1-C6	4.75	1.48	1.38
3	E	302	1EN	C1-C6	4.67	1.48	1.38
3	A	302	1EN	C1-C6	4.59	1.48	1.38
2	B	301	NAP	C2N-N1N	4.41	1.40	1.35
3	A	302	1EN	C5-C4	4.31	1.47	1.42
3	D	302	1EN	C1-C6	4.25	1.47	1.38
3	B	302	1EN	C5-C4	3.99	1.47	1.42
3	D	302	1EN	C5-C4	3.75	1.47	1.42
3	A	302	1EN	N9-N8	3.68	1.44	1.37
3	D	302	1EN	N9-N8	3.30	1.44	1.37
3	B	302	1EN	N9-N8	3.19	1.43	1.37
3	E	302	1EN	C5-C4	2.90	1.46	1.42
3	E	302	1EN	N9-N8	2.83	1.43	1.37
3	D	302	1EN	C4-N9	-2.58	1.30	1.33
3	D	302	1EN	C10-C11	-2.48	1.50	1.54
3	E	302	1EN	C12-C10	-2.44	1.48	1.52
3	A	302	1EN	C12-C10	-2.16	1.49	1.52
3	B	302	1EN	C10-C11	-2.12	1.51	1.54

Continued on next page...

Continued from previous page...

Mol	Chain	Res	Type	Atoms	Z	Observed(Å)	Ideal(Å)
3	E	302	1EN	C10-C11	-2.08	1.51	1.54
3	A	302	1EN	C4-N9	-2.07	1.31	1.33
3	A	302	1EN	C13-C10	-2.05	1.49	1.52
2	D	301	NAP	C2D-C1D	2.03	1.56	1.53

All (13) bond angle outliers are listed below:

Mol	Chain	Res	Type	Atoms	Z	Observed(°)	Ideal(°)
2	B	301	NAP	O4D-C1D-C2D	-3.66	101.57	106.93
2	E	301	NAP	O4D-C1D-C2D	-3.46	101.87	106.93
2	D	301	NAP	O4D-C1D-C2D	-2.93	102.65	106.93
2	A	301	NAP	O4D-C1D-C2D	-2.62	103.10	106.93
2	E	301	NAP	C5A-C6A-N6A	2.50	124.15	120.35
2	B	301	NAP	C5A-C6A-N6A	2.34	123.92	120.35
3	A	302	1EN	C13-C10-C12	2.34	60.15	58.70
2	E	301	NAP	C6N-N1N-C2N	-2.30	119.87	121.97
2	A	301	NAP	C5A-C6A-N6A	2.27	123.81	120.35
2	D	301	NAP	C5A-C6A-N6A	2.22	123.73	120.35
3	B	302	1EN	C13-C10-C12	2.19	60.06	58.70
3	B	302	1EN	C26-C21-C22	2.15	121.44	118.07
3	A	302	1EN	C26-C21-C22	2.06	121.30	118.07

There are no chirality outliers.

All (20) torsion outliers are listed below:

Mol	Chain	Res	Type	Atoms
2	B	301	NAP	C5D-O5D-PN-O1N
2	E	301	NAP	C2B-O2B-P2B-O1X
2	E	301	NAP	C2B-O2B-P2B-O2X
2	E	301	NAP	C5D-O5D-PN-O1N
2	B	301	NAP	C5D-O5D-PN-O3
2	E	301	NAP	C5D-O5D-PN-O3
3	A	302	1EN	C13-C10-C11-C14
3	A	302	1EN	C13-C10-C11-C18
3	D	302	1EN	C13-C10-C11-C18
3	E	302	1EN	C13-C10-C11-C14
3	E	302	1EN	C13-C10-C11-C18
2	E	301	NAP	O4B-C4B-C5B-O5B
2	D	301	NAP	O4B-C4B-C5B-O5B
2	D	301	NAP	C2B-O2B-P2B-O2X
2	B	301	NAP	PN-O3-PA-O2A
3	A	302	1EN	C7-C10-C11-C18

Continued on next page...

Continued from previous page...

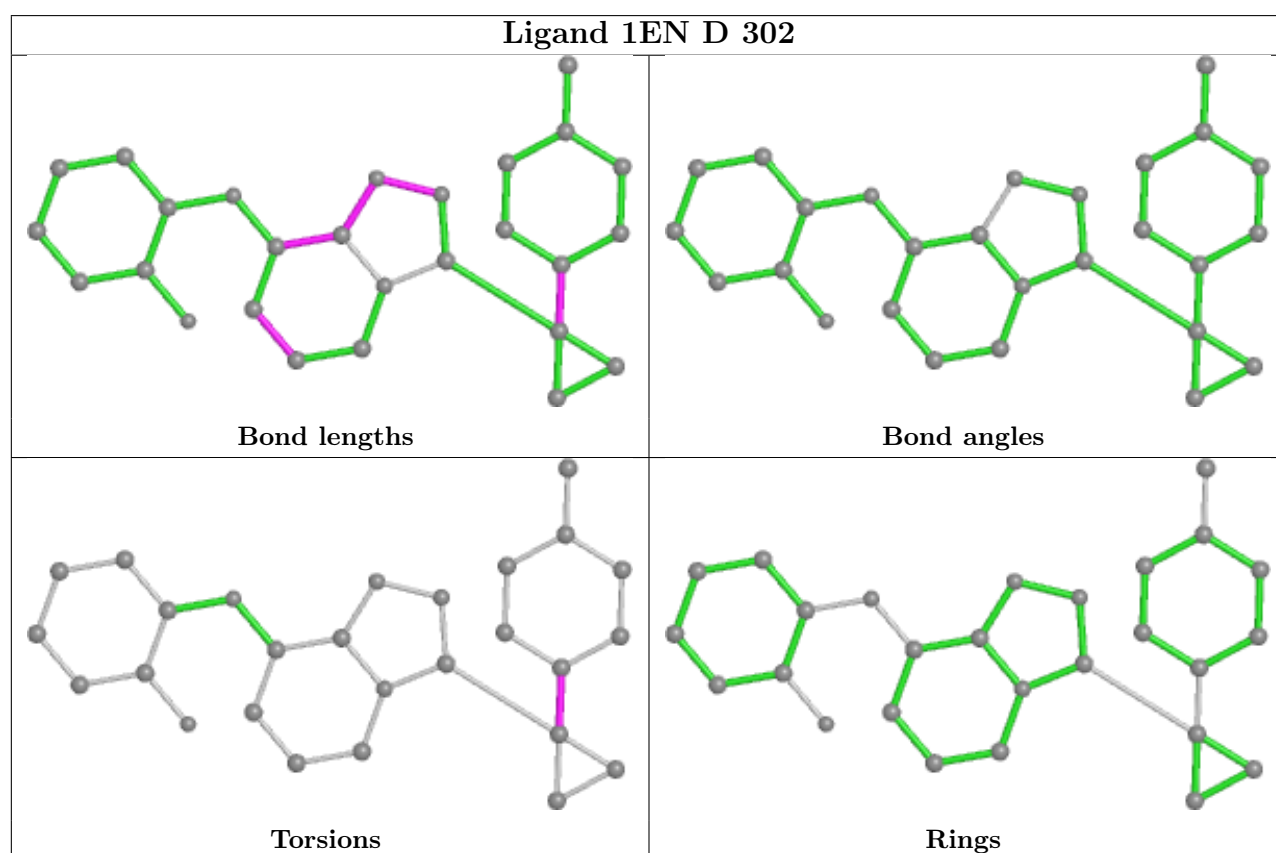
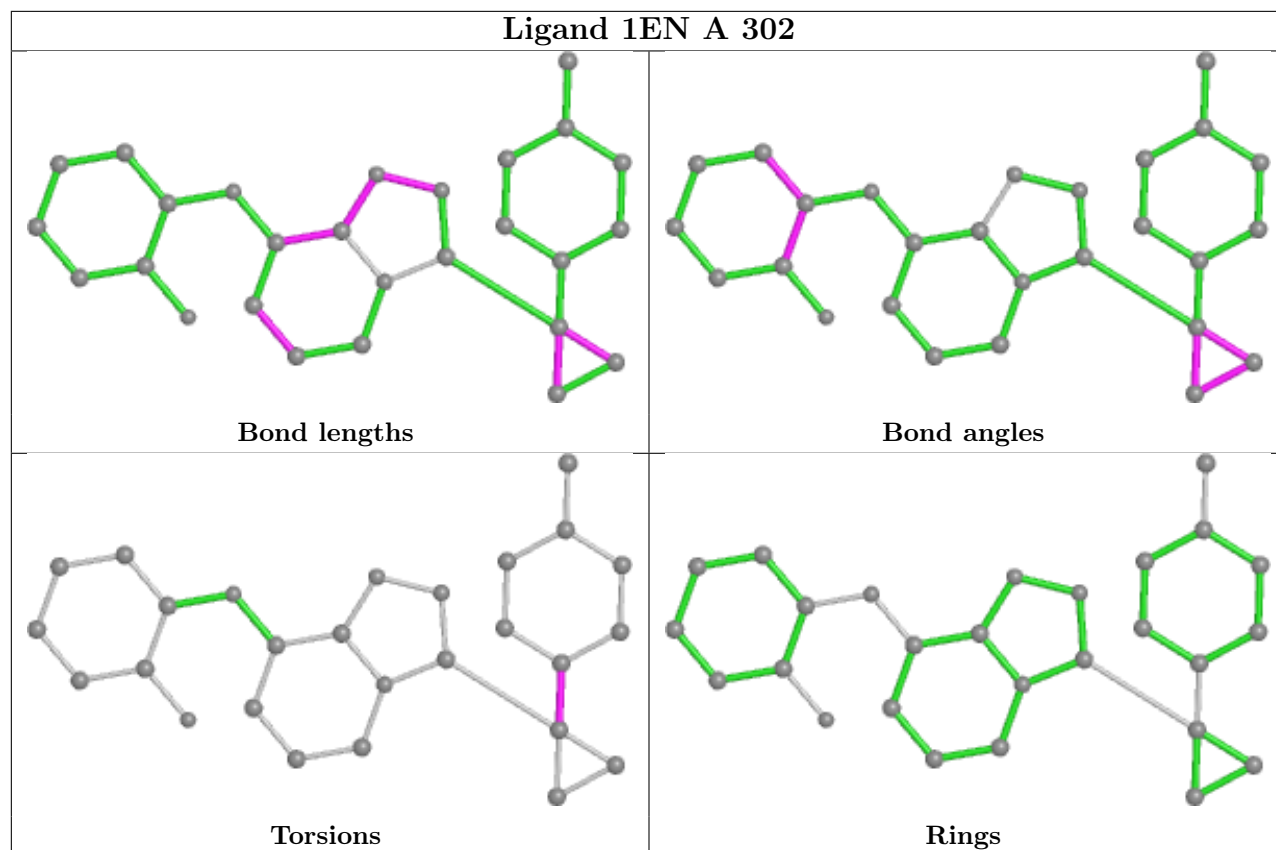
Mol	Chain	Res	Type	Atoms
2	B	301	NAP	C3B-C2B-O2B-P2B
2	E	301	NAP	C5D-O5D-PN-O2N
2	A	301	NAP	O4B-C4B-C5B-O5B
2	B	301	NAP	O4B-C4B-C5B-O5B

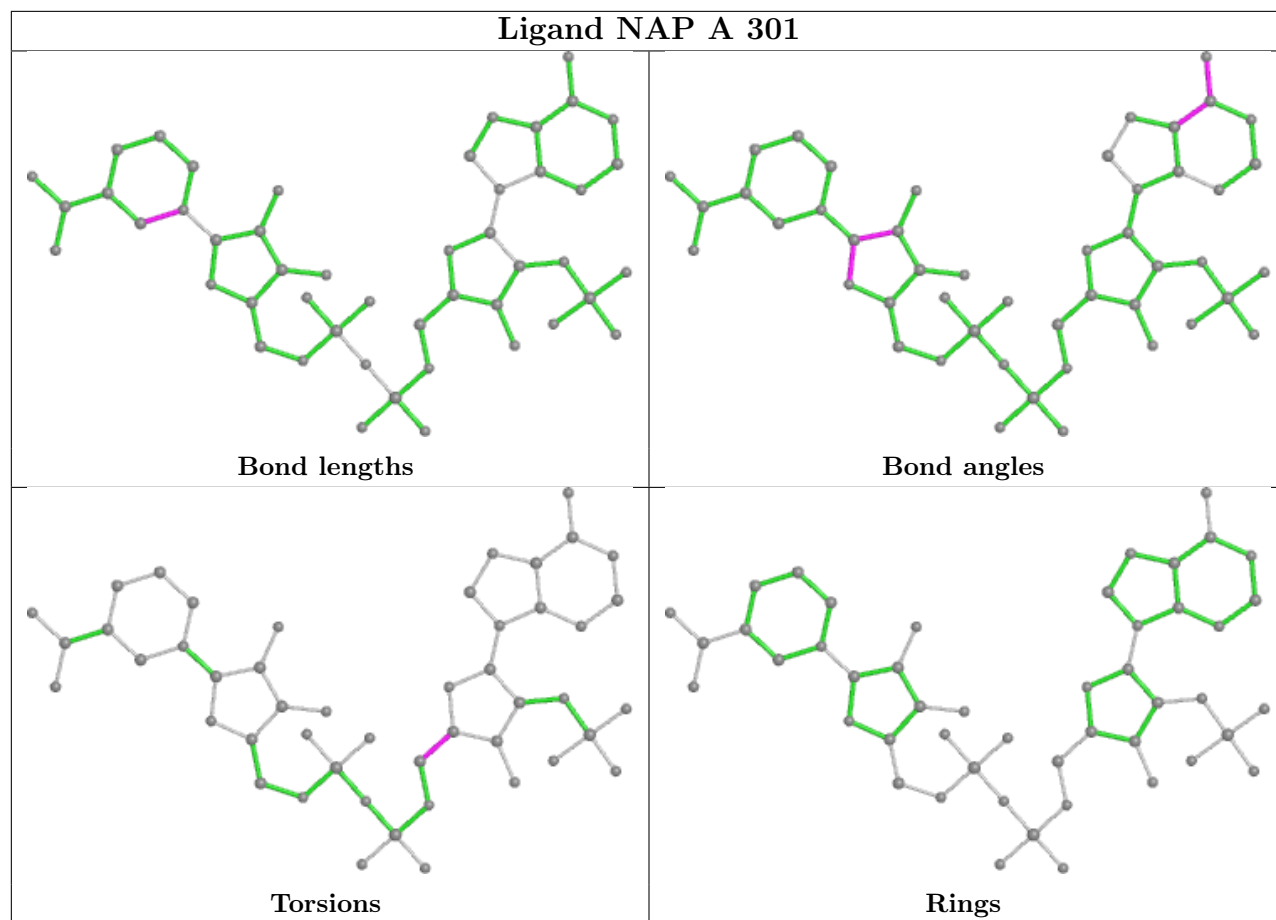
There are no ring outliers.

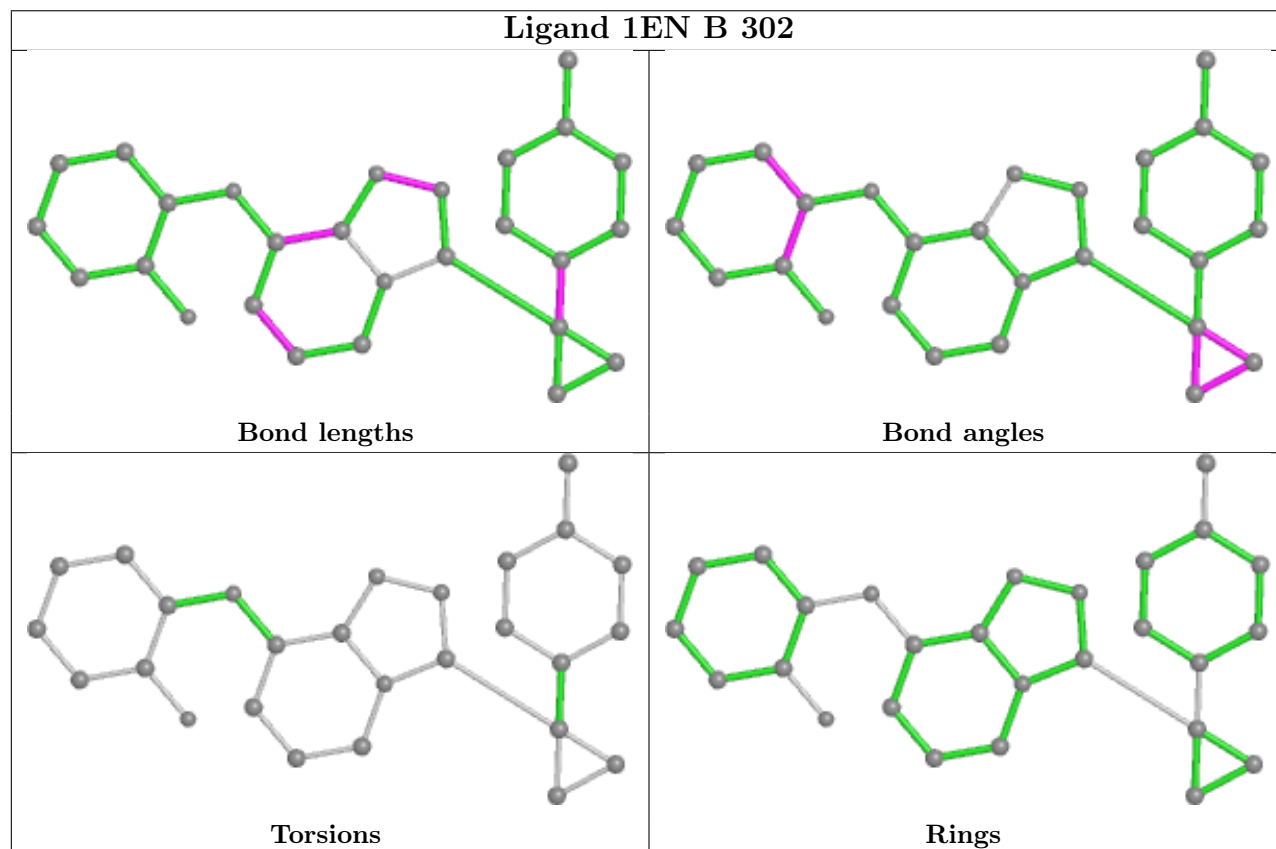
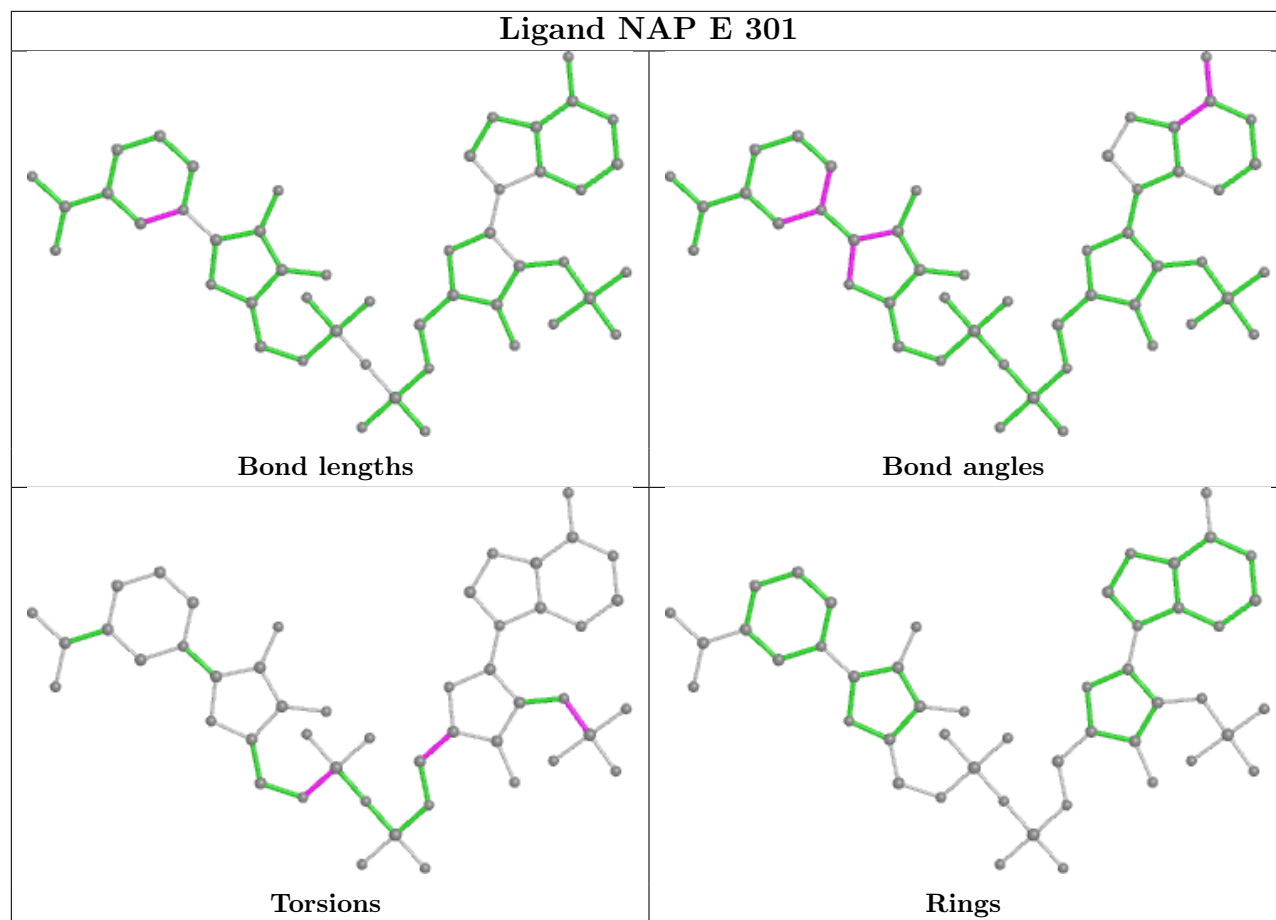
6 monomers are involved in 10 short contacts:

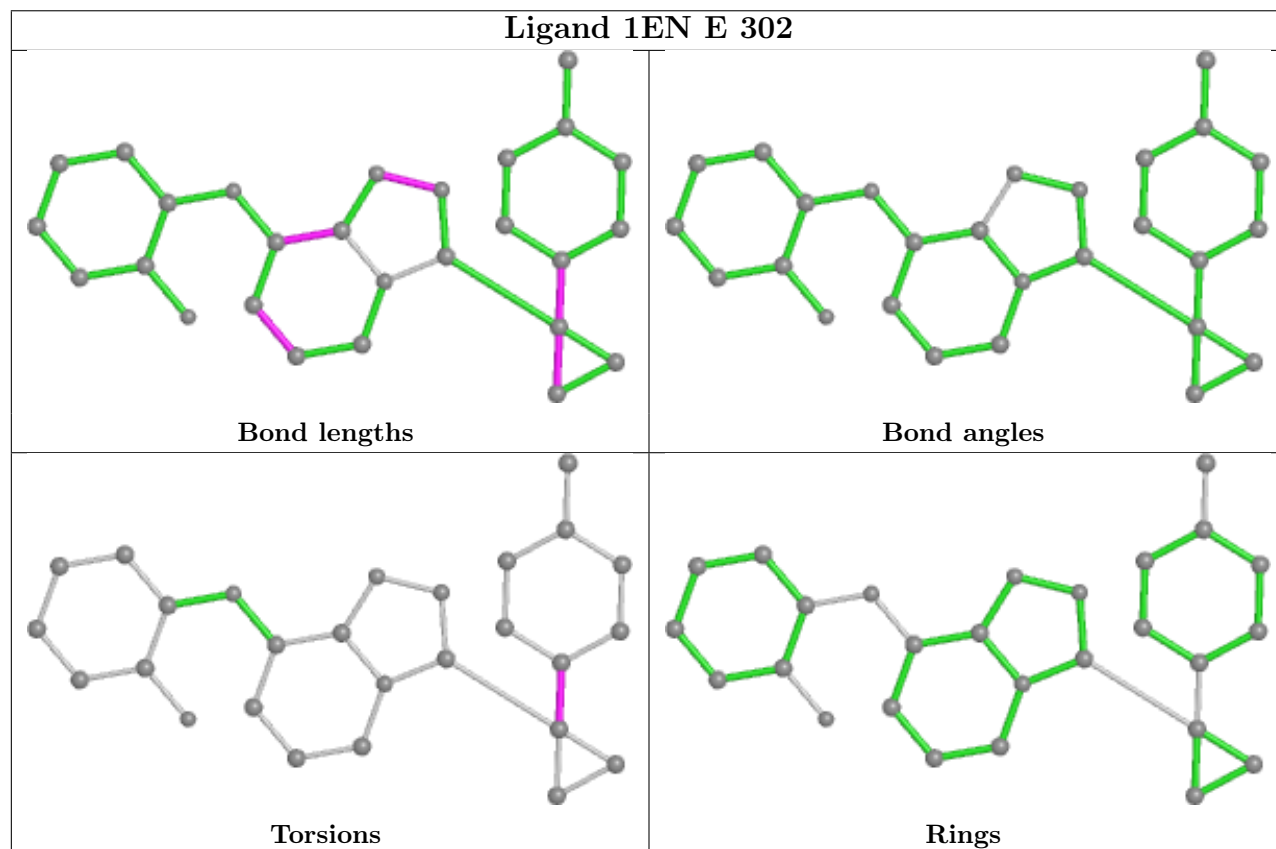
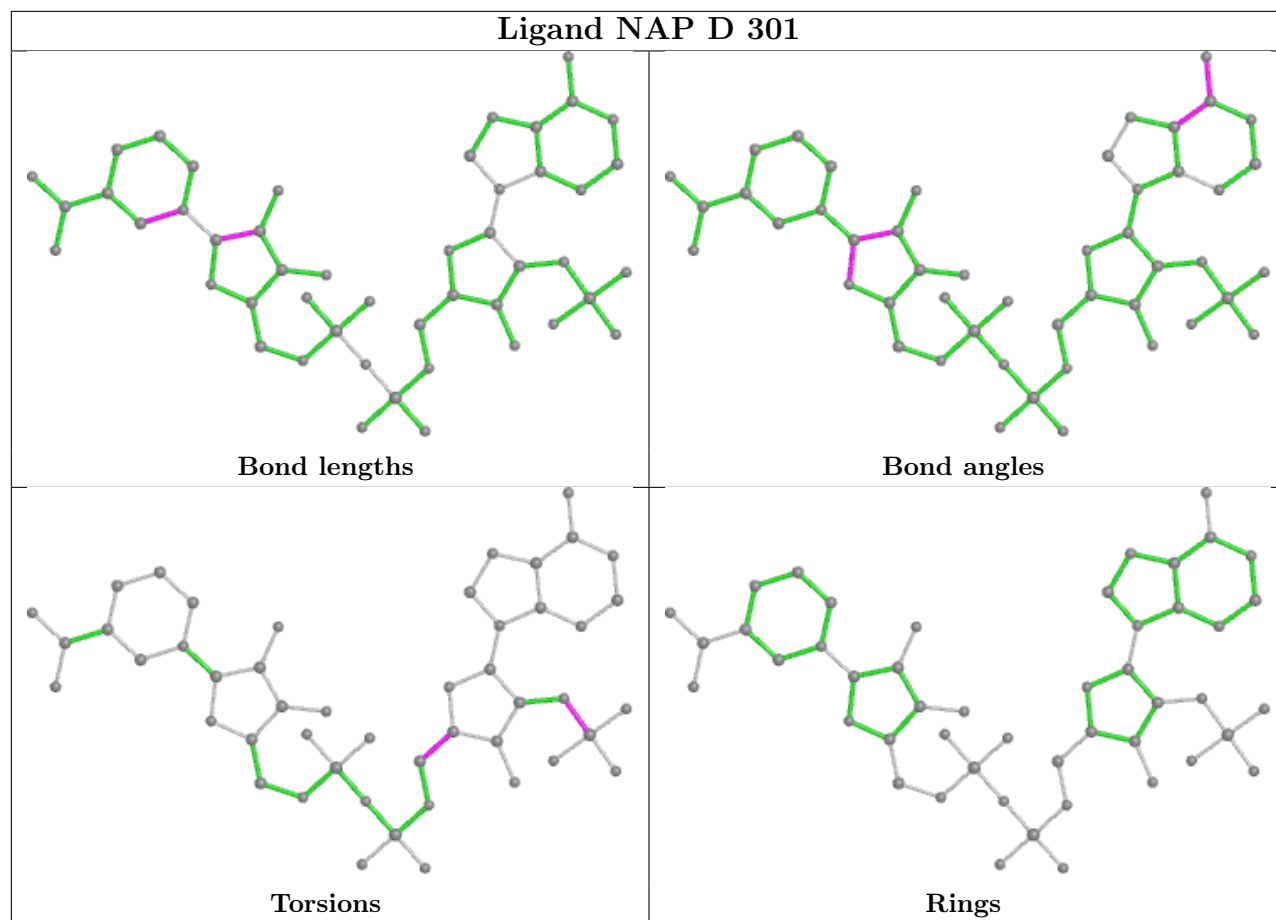
Mol	Chain	Res	Type	Clashes	Symm-Clashes
3	A	302	1EN	3	0
3	D	302	1EN	1	0
2	E	301	NAP	1	0
3	B	302	1EN	3	0
3	E	302	1EN	1	0
2	B	301	NAP	1	0

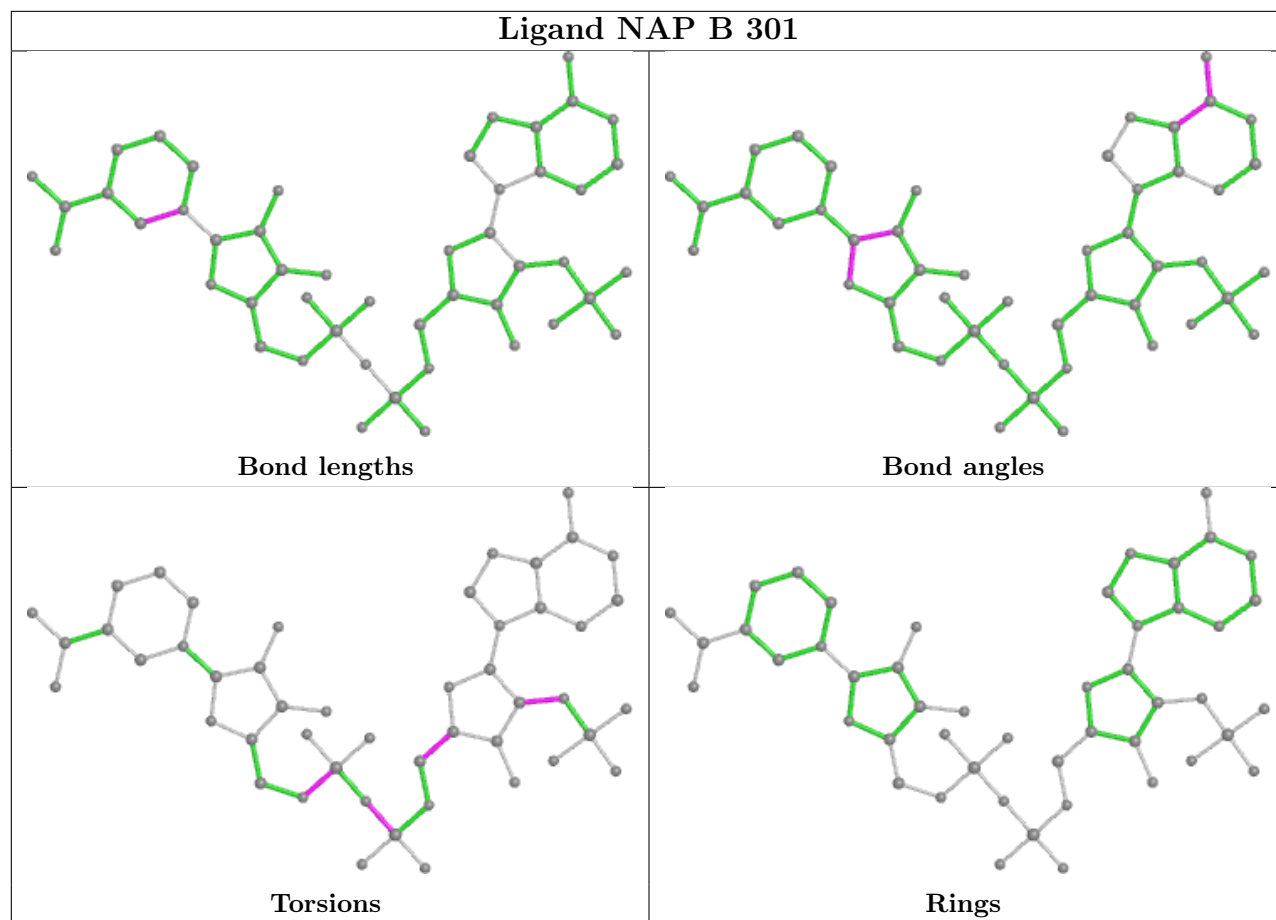
The following is a two-dimensional graphical depiction of Mogul quality analysis of bond lengths, bond angles, torsion angles, and ring geometry for all instances of the Ligand of Interest. In addition, ligands with molecular weight > 250 and outliers as shown on the validation Tables will also be included. For torsion angles, if less than 5% of the Mogul distribution of torsion angles is within 10 degrees of the torsion angle in question, then that torsion angle is considered an outlier. Any bond that is central to one or more torsion angles identified as an outlier by Mogul will be highlighted in the graph. For rings, the root-mean-square deviation (RMSD) between the ring in question and similar rings identified by Mogul is calculated over all ring torsion angles. If the average RMSD is greater than 60 degrees and the minimal RMSD between the ring in question and any Mogul-identified rings is also greater than 60 degrees, then that ring is considered an outlier. The outliers are highlighted in purple. The color gray indicates Mogul did not find sufficient equivalents in the CSD to analyse the geometry.











5.7 Other polymers [\(i\)](#)

There are no such residues in this entry.

5.8 Polymer linkage issues [\(i\)](#)

There are no chain breaks in this entry.

6 Fit of model and data

6.1 Protein, DNA and RNA chains

In the following table, the column labelled ‘#RSRZ > 2’ contains the number (and percentage) of RSRZ outliers, followed by percent RSRZ outliers for the chain as percentile scores relative to all X-ray entries and entries of similar resolution. The OWAB column contains the minimum, median, 95th percentile and maximum values of the occupancy-weighted average B-factor per residue. The column labelled ‘Q < 0.9’ lists the number of (and percentage) of residues with an average occupancy less than 0.9.

Mol	Chain	Analysed	<RSRZ>	#RSRZ>2	OWAB(Å ²)	Q<0.9
1	A	266/286 (93%)	-0.11	9 (3%) 45 57	13, 24, 48, 105	0
1	B	281/286 (98%)	-0.05	12 (4%) 35 47	13, 27, 54, 85	0
1	D	275/286 (96%)	-0.20	13 (4%) 31 44	10, 21, 53, 71	0
1	E	264/286 (92%)	-0.10	12 (4%) 33 46	11, 26, 61, 81	0
All	All	1086/1144 (94%)	-0.11	46 (4%) 36 48	10, 25, 54, 105	0

All (46) RSRZ outliers are listed below:

Mol	Chain	Res	Type	RSRZ
1	E	282	THR	5.8
1	E	263	TRP	5.1
1	D	282	THR	4.7
1	D	11	ALA	4.5
1	D	10	MET	4.2
1	A	291	ASN	4.1
1	D	263	TRP	4.1
1	B	262	ARG	4.1
1	B	290	ILE	4.0
1	E	280	TYR	4.0
1	B	280	TYR	3.9
1	A	290	ILE	3.7
1	D	24	ASN	3.7
1	E	205	ARG	3.4
1	A	233	MET	3.4
1	B	283	SER	3.3
1	E	283	SER	3.3
1	B	205	ARG	3.2
1	D	22	GLY	3.1
1	D	23	SER	3.0
1	E	262	ARG	3.0

Continued on next page...

Continued from previous page...

Mol	Chain	Res	Type	RSRZ
1	B	263	TRP	3.0
1	B	279	LEU	3.0
1	D	262	ARG	3.0
1	B	12	SER	2.9
1	A	234	GLN	2.9
1	A	205	ARG	2.8
1	A	262	ARG	2.8
1	D	12	SER	2.6
1	E	287	ASP	2.6
1	E	289	PHE	2.5
1	E	279	LEU	2.5
1	D	25	GLU	2.4
1	B	68	LYS	2.4
1	E	232	HIS	2.4
1	B	24	ASN	2.4
1	A	232	HIS	2.3
1	B	203	VAL	2.3
1	D	21	ARG	2.3
1	D	284	TYR	2.2
1	A	203	VAL	2.1
1	E	284	TYR	2.1
1	B	190	LEU	2.1
1	A	190	LEU	2.1
1	D	283	SER	2.1
1	E	281	SER	2.0

6.2 Non-standard residues in protein, DNA, RNA chains [i](#)

There are no non-standard protein/DNA/RNA residues in this entry.

6.3 Carbohydrates [i](#)

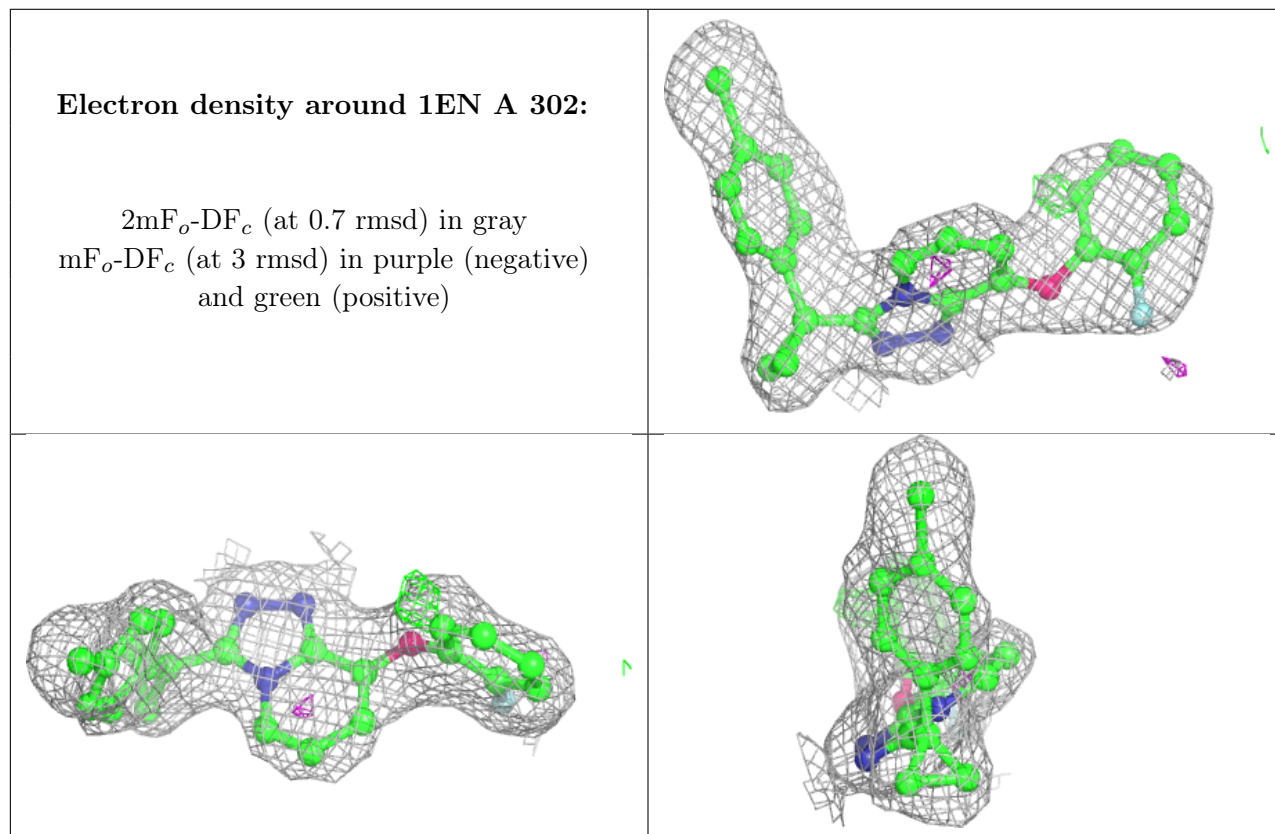
There are no monosaccharides in this entry.

6.4 Ligands [i](#)

In the following table, the Atoms column lists the number of modelled atoms in the group and the number defined in the chemical component dictionary. The B-factors column lists the minimum, median, 95th percentile and maximum values of B factors of atoms in the group. The column labelled 'Q< 0.9' lists the number of atoms with occupancy less than 0.9.

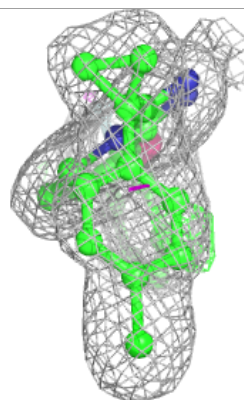
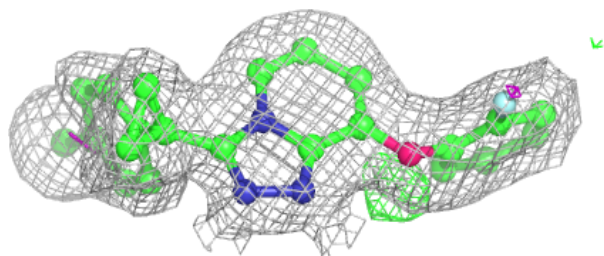
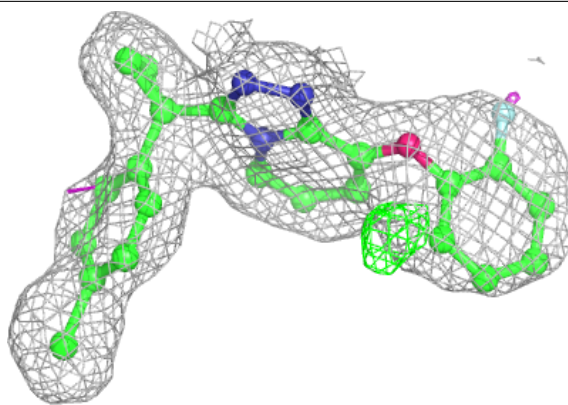
Mol	Type	Chain	Res	Atoms	RSCC	RSR	B-factors(\AA^2)	Q<0.9
3	1EN	A	302	27/27	0.93	0.15	25,28,37,41	0
3	1EN	B	302	27/27	0.93	0.13	18,23,34,41	0
3	1EN	D	302	27/27	0.96	0.11	15,17,22,38	0
3	1EN	E	302	27/27	0.96	0.10	16,22,28,38	0
2	NAP	A	301	48/48	0.98	0.08	9,19,23,29	0
2	NAP	B	301	48/48	0.98	0.08	12,19,25,32	0
2	NAP	D	301	48/48	0.98	0.08	10,15,22,25	0
2	NAP	E	301	48/48	0.98	0.08	10,18,25,30	0

The following is a graphical depiction of the model fit to experimental electron density of all instances of the Ligand of Interest. In addition, ligands with molecular weight > 250 and outliers as shown on the geometry validation Tables will also be included. Each fit is shown from different orientation to approximate a three-dimensional view.

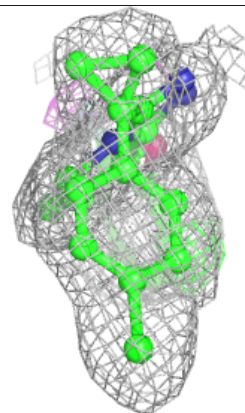
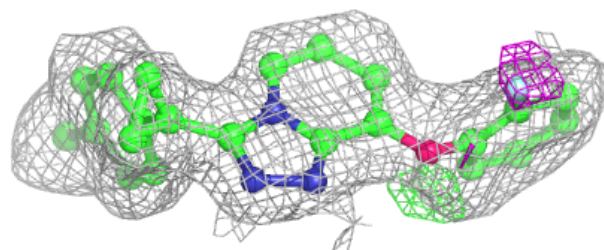
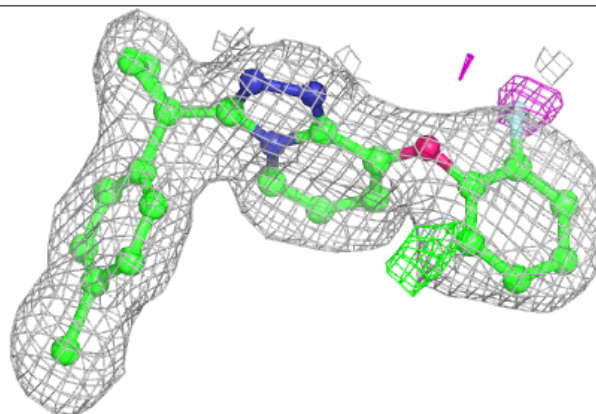


Electron density around 1EN B 302:

$2mF_o-DF_c$ (at 0.7 rmsd) in gray
 mF_o-DF_c (at 3 rmsd) in purple (negative)
and green (positive)

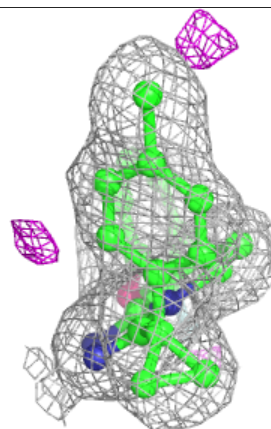
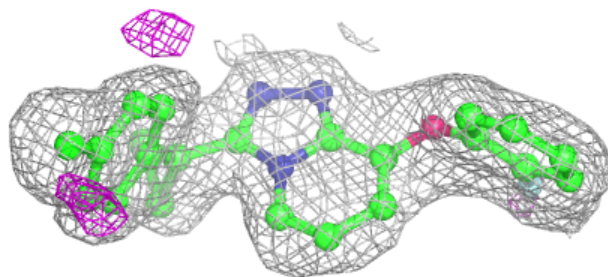
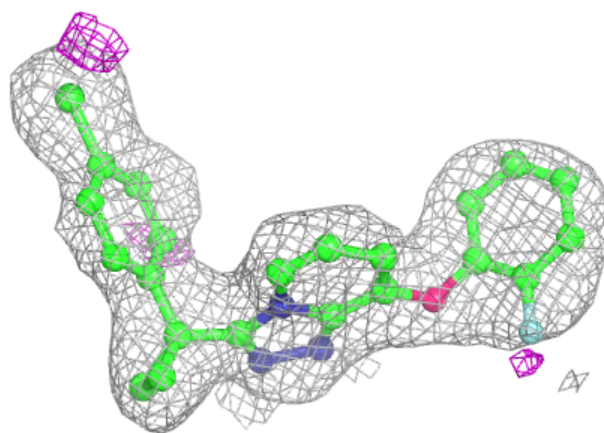
**Electron density around 1EN D 302:**

$2mF_o-DF_c$ (at 0.7 rmsd) in gray
 mF_o-DF_c (at 3 rmsd) in purple (negative)
and green (positive)

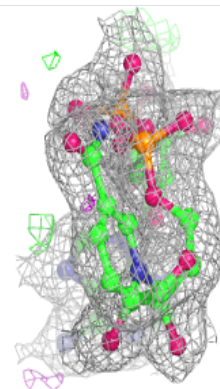
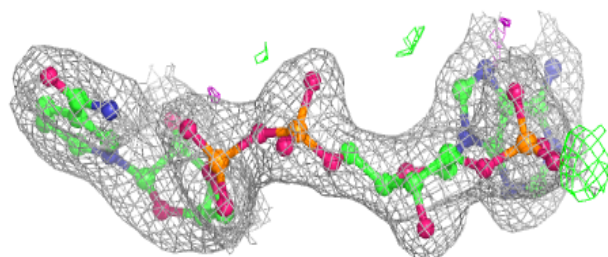
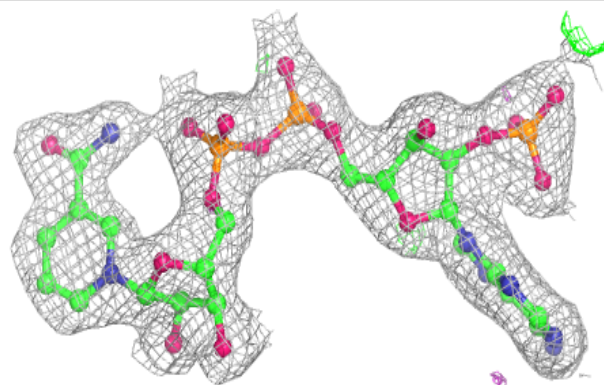


Electron density around 1EN E 302:

$2mF_o-DF_c$ (at 0.7 rmsd) in gray
 mF_o-DF_c (at 3 rmsd) in purple (negative)
and green (positive)

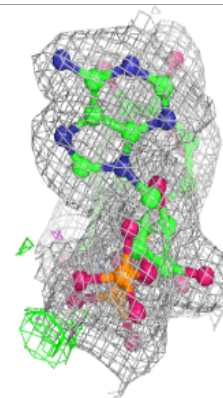
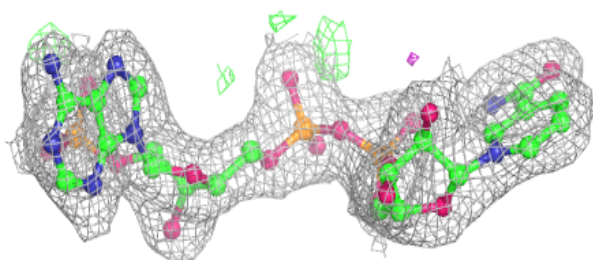
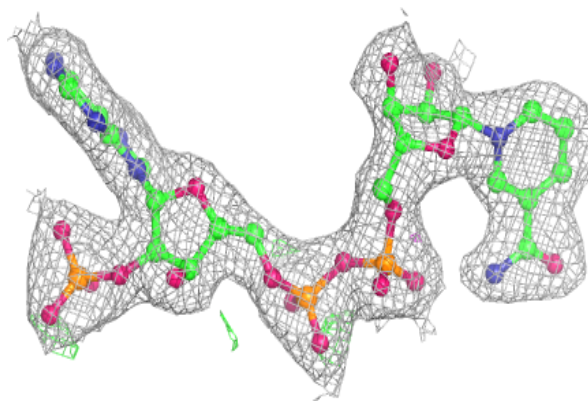
**Electron density around NAP A 301:**

$2mF_o-DF_c$ (at 0.7 rmsd) in gray
 mF_o-DF_c (at 3 rmsd) in purple (negative)
and green (positive)

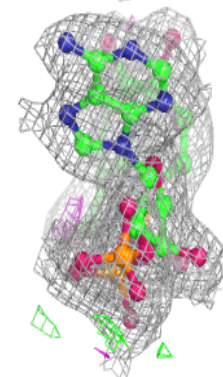
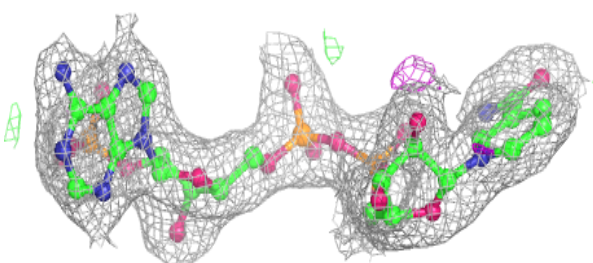
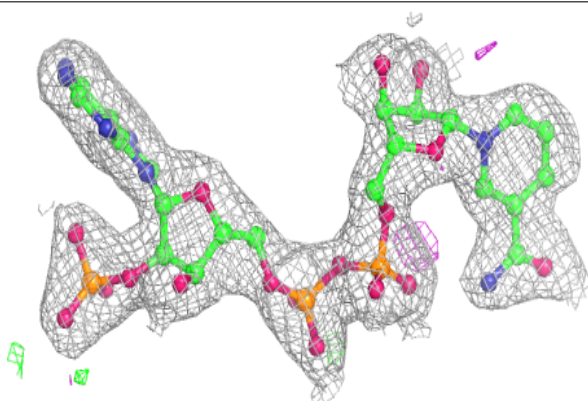


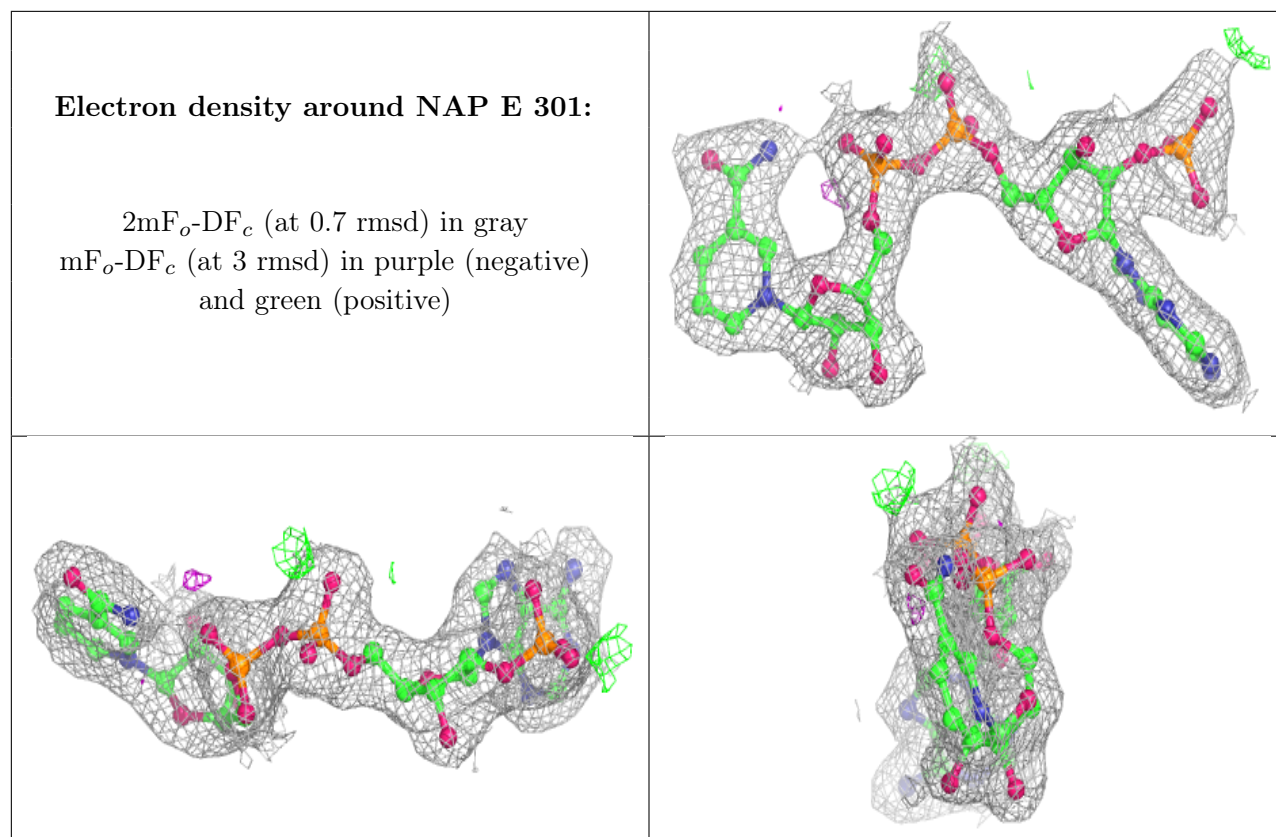
Electron density around NAP B 301:

$2mF_o-DF_c$ (at 0.7 rmsd) in gray
 mF_o-DF_c (at 3 rmsd) in purple (negative)
and green (positive)

**Electron density around NAP D 301:**

$2mF_o-DF_c$ (at 0.7 rmsd) in gray
 mF_o-DF_c (at 3 rmsd) in purple (negative)
and green (positive)





6.5 Other polymers [i](#)

There are no such residues in this entry.