



Full wwPDB X-ray Structure Validation Report ⓘ

Jun 16, 2024 – 02:45 PM EDT

PDB ID : 4XSD
Title : Complex structure of thymidylate synthase from varicella zoster virus with a dUMP
Authors : Hew, K.
Deposited on : 2015-01-22
Resolution : 2.90 Å(reported)

This is a Full wwPDB X-ray Structure Validation Report for a publicly released PDB entry.

We welcome your comments at validation@mail.wwpdb.org

A user guide is available at

<https://www.wwpdb.org/validation/2017/XrayValidationReportHelp>

with specific help available everywhere you see the ⓘ symbol.

The types of validation reports are described at

<http://www.wwpdb.org/validation/2017/FAQs#types>.

The following versions of software and data (see [references ⓘ](#)) were used in the production of this report:

MolProbity : 4.02b-467
Mogul : 1.8.5 (274361), CSD as541be (2020)
Xtriage (Phenix) : 1.13
EDS : 2.37.1
buster-report : 1.1.7 (2018)
Percentile statistics : 20191225.v01 (using entries in the PDB archive December 25th 2019)
Refmac : 5.8.0158
CCP4 : 7.0.044 (Gargrove)
Ideal geometry (proteins) : Engh & Huber (2001)
Ideal geometry (DNA, RNA) : Parkinson et al. (1996)
Validation Pipeline (wwPDB-VP) : 2.37.1

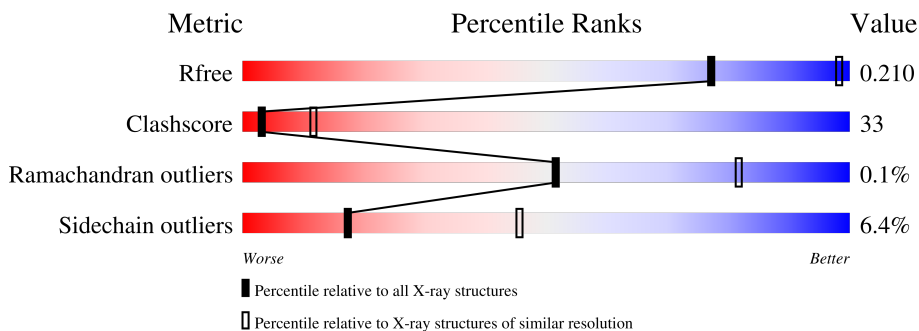
1 Overall quality at a glance

The following experimental techniques were used to determine the structure:

X-RAY DIFFRACTION

The reported resolution of this entry is 2.90 Å.

Percentile scores (ranging between 0-100) for global validation metrics of the entry are shown in the following graphic. The table shows the number of entries on which the scores are based.



Metric	Whole archive (#Entries)	Similar resolution (#Entries, resolution range(Å))
R_{free}	130704	1957 (2.90-2.90)
Clashscore	141614	2172 (2.90-2.90)
Ramachandran outliers	138981	2115 (2.90-2.90)
Sidechain outliers	138945	2117 (2.90-2.90)

The table below summarises the geometric issues observed across the polymeric chains and their fit to the electron density. The red, orange, yellow and green segments of the lower bar indicate the fraction of residues that contain outliers for ≥ 3 , 2, 1 and 0 types of geometric quality criteria respectively. A grey segment represents the fraction of residues that are not modelled. The numeric value for each fraction is indicated below the corresponding segment, with a dot representing fractions $\leq 5\%$.

Mol	Chain	Length	Quality of chain
1	A	311	34% (green), 48% (yellow), 16% (grey), 0% (orange), 0% (red)
1	B	311	41% (green), 44% (yellow), 11% (grey), 0% (orange), 0% (red)
1	C	311	32% (green), 49% (yellow), 16% (grey), 0% (orange), 0% (red)
1	D	311	43% (green), 44% (yellow), 10% (grey), 0% (orange), 0% (red)

The following table lists non-polymeric compounds, carbohydrate monomers and non-standard residues in protein, DNA, RNA chains that are outliers for geometric or electron-density-fit criteria:

Mol	Type	Chain	Res	Chirality	Geometry	Clashes	Electron density
2	UMP	A	1001	-	-	X	-
2	UMP	C	1001	-	-	X	-
2	UMP	D	1001	-	-	X	-

2 Entry composition [i](#)

There are 3 unique types of molecules in this entry. The entry contains 8850 atoms, of which 0 are hydrogens and 0 are deuteriums.

In the tables below, the ZeroOcc column contains the number of atoms modelled with zero occupancy, the AltConf column contains the number of residues with at least one atom in alternate conformation and the Trace column contains the number of residues modelled with at most 2 atoms.

- Molecule 1 is a protein called Thymidylate synthase.

Mol	Chain	Residues	Atoms					ZeroOcc	AltConf	Trace
			Total	C	N	O	S			
1	A	262	2120	1365	367	378	10	0	0	0
1	B	277	2247	1448	392	398	9	0	0	0
1	C	262	2124	1367	367	380	10	0	0	0
1	D	280	2270	1460	396	404	10	0	0	0

There are 92 discrepancies between the modelled and reference sequences:

Chain	Residue	Modelled	Actual	Comment	Reference
A	-15	MET	-	initiating methionine	UNP Q4JQW2
A	-14	HIS	-	expression tag	UNP Q4JQW2
A	-13	HIS	-	expression tag	UNP Q4JQW2
A	-12	HIS	-	expression tag	UNP Q4JQW2
A	-11	HIS	-	expression tag	UNP Q4JQW2
A	-10	HIS	-	expression tag	UNP Q4JQW2
A	-9	HIS	-	expression tag	UNP Q4JQW2
A	-8	SER	-	expression tag	UNP Q4JQW2
A	-7	SER	-	expression tag	UNP Q4JQW2
A	-6	GLY	-	expression tag	UNP Q4JQW2
A	-5	VAL	-	expression tag	UNP Q4JQW2
A	-4	ASP	-	expression tag	UNP Q4JQW2
A	-3	LEU	-	expression tag	UNP Q4JQW2
A	-2	GLY	-	expression tag	UNP Q4JQW2
A	-1	THR	-	expression tag	UNP Q4JQW2
A	0	GLU	-	expression tag	UNP Q4JQW2
A	1	ASN	-	expression tag	UNP Q4JQW2
A	2	LEU	-	expression tag	UNP Q4JQW2
A	3	TYR	-	expression tag	UNP Q4JQW2
A	4	PHE	-	expression tag	UNP Q4JQW2
A	5	GLN	-	expression tag	UNP Q4JQW2

Continued on next page...

Continued from previous page...

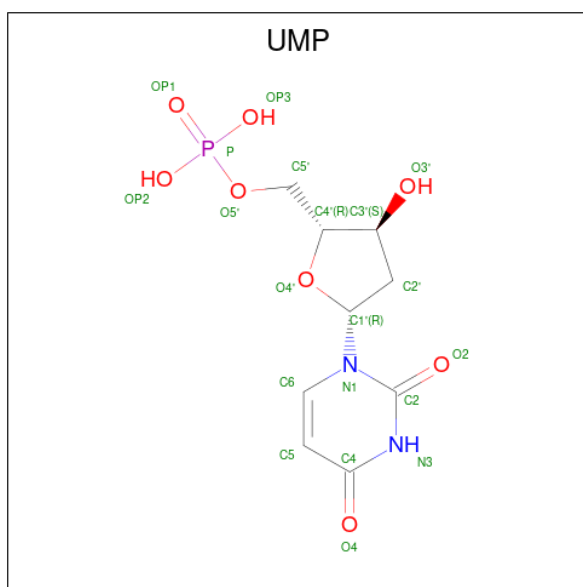
Chain	Residue	Modelled	Actual	Comment	Reference
A	6	SER	-	expression tag	UNP Q4JQW2
A	7	MET	-	expression tag	UNP Q4JQW2
B	-15	MET	-	initiating methionine	UNP Q4JQW2
B	-14	HIS	-	expression tag	UNP Q4JQW2
B	-13	HIS	-	expression tag	UNP Q4JQW2
B	-12	HIS	-	expression tag	UNP Q4JQW2
B	-11	HIS	-	expression tag	UNP Q4JQW2
B	-10	HIS	-	expression tag	UNP Q4JQW2
B	-9	HIS	-	expression tag	UNP Q4JQW2
B	-8	SER	-	expression tag	UNP Q4JQW2
B	-7	SER	-	expression tag	UNP Q4JQW2
B	-6	GLY	-	expression tag	UNP Q4JQW2
B	-5	VAL	-	expression tag	UNP Q4JQW2
B	-4	ASP	-	expression tag	UNP Q4JQW2
B	-3	LEU	-	expression tag	UNP Q4JQW2
B	-2	GLY	-	expression tag	UNP Q4JQW2
B	-1	THR	-	expression tag	UNP Q4JQW2
B	0	GLU	-	expression tag	UNP Q4JQW2
B	1	ASN	-	expression tag	UNP Q4JQW2
B	2	LEU	-	expression tag	UNP Q4JQW2
B	3	TYR	-	expression tag	UNP Q4JQW2
B	4	PHE	-	expression tag	UNP Q4JQW2
B	5	GLN	-	expression tag	UNP Q4JQW2
B	6	SER	-	expression tag	UNP Q4JQW2
B	7	MET	-	expression tag	UNP Q4JQW2
C	-15	MET	-	initiating methionine	UNP Q4JQW2
C	-14	HIS	-	expression tag	UNP Q4JQW2
C	-13	HIS	-	expression tag	UNP Q4JQW2
C	-12	HIS	-	expression tag	UNP Q4JQW2
C	-11	HIS	-	expression tag	UNP Q4JQW2
C	-10	HIS	-	expression tag	UNP Q4JQW2
C	-9	HIS	-	expression tag	UNP Q4JQW2
C	-8	SER	-	expression tag	UNP Q4JQW2
C	-7	SER	-	expression tag	UNP Q4JQW2
C	-6	GLY	-	expression tag	UNP Q4JQW2
C	-5	VAL	-	expression tag	UNP Q4JQW2
C	-4	ASP	-	expression tag	UNP Q4JQW2
C	-3	LEU	-	expression tag	UNP Q4JQW2
C	-2	GLY	-	expression tag	UNP Q4JQW2
C	-1	THR	-	expression tag	UNP Q4JQW2
C	0	GLU	-	expression tag	UNP Q4JQW2
C	1	ASN	-	expression tag	UNP Q4JQW2

Continued on next page...

Continued from previous page...

Chain	Residue	Modelled	Actual	Comment	Reference
C	2	LEU	-	expression tag	UNP Q4JQW2
C	3	TYR	-	expression tag	UNP Q4JQW2
C	4	PHE	-	expression tag	UNP Q4JQW2
C	5	GLN	-	expression tag	UNP Q4JQW2
C	6	SER	-	expression tag	UNP Q4JQW2
C	7	MET	-	expression tag	UNP Q4JQW2
D	-15	MET	-	initiating methionine	UNP Q4JQW2
D	-14	HIS	-	expression tag	UNP Q4JQW2
D	-13	HIS	-	expression tag	UNP Q4JQW2
D	-12	HIS	-	expression tag	UNP Q4JQW2
D	-11	HIS	-	expression tag	UNP Q4JQW2
D	-10	HIS	-	expression tag	UNP Q4JQW2
D	-9	HIS	-	expression tag	UNP Q4JQW2
D	-8	SER	-	expression tag	UNP Q4JQW2
D	-7	SER	-	expression tag	UNP Q4JQW2
D	-6	GLY	-	expression tag	UNP Q4JQW2
D	-5	VAL	-	expression tag	UNP Q4JQW2
D	-4	ASP	-	expression tag	UNP Q4JQW2
D	-3	LEU	-	expression tag	UNP Q4JQW2
D	-2	GLY	-	expression tag	UNP Q4JQW2
D	-1	THR	-	expression tag	UNP Q4JQW2
D	0	GLU	-	expression tag	UNP Q4JQW2
D	1	ASN	-	expression tag	UNP Q4JQW2
D	2	LEU	-	expression tag	UNP Q4JQW2
D	3	TYR	-	expression tag	UNP Q4JQW2
D	4	PHE	-	expression tag	UNP Q4JQW2
D	5	GLN	-	expression tag	UNP Q4JQW2
D	6	SER	-	expression tag	UNP Q4JQW2
D	7	MET	-	expression tag	UNP Q4JQW2

- Molecule 2 is 2'-DEOXYURIDINE 5'-MONOPHOSPHATE (three-letter code: UMP) (formula: C₉H₁₃N₂O₈P).



Mol	Chain	Residues	Atoms					ZeroOcc	AltConf
			Total	C	N	O	P		
2	A	1	Total	C	N	O	P	0	0
			20	9	2	8	1		
2	B	1	Total	C	N	O	P	0	0
			20	9	2	8	1		
2	C	1	Total	C	N	O	P	0	0
			20	9	2	8	1		
2	D	1	Total	C	N	O	P	0	0
			20	9	2	8	1		

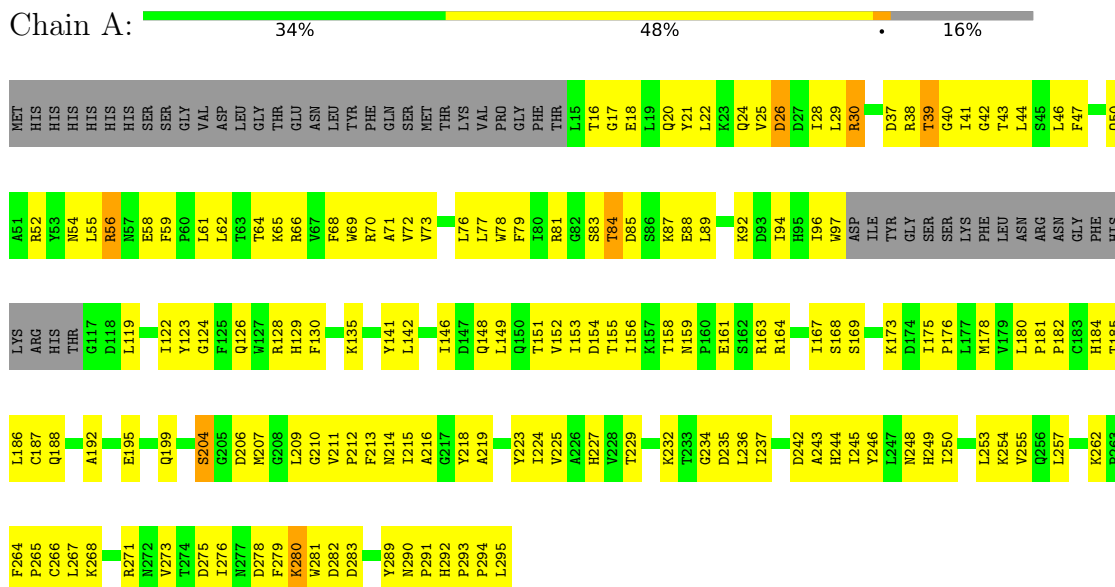
- Molecule 3 is water.

Mol	Chain	Residues	Atoms		ZeroOcc	AltConf
3	A	2	Total	O	0	0
			2	2		
3	B	4	Total	O	0	0
			4	4		
3	C	2	Total	O	0	0
			2	2		
3	D	1	Total	O	0	0
			1	1		

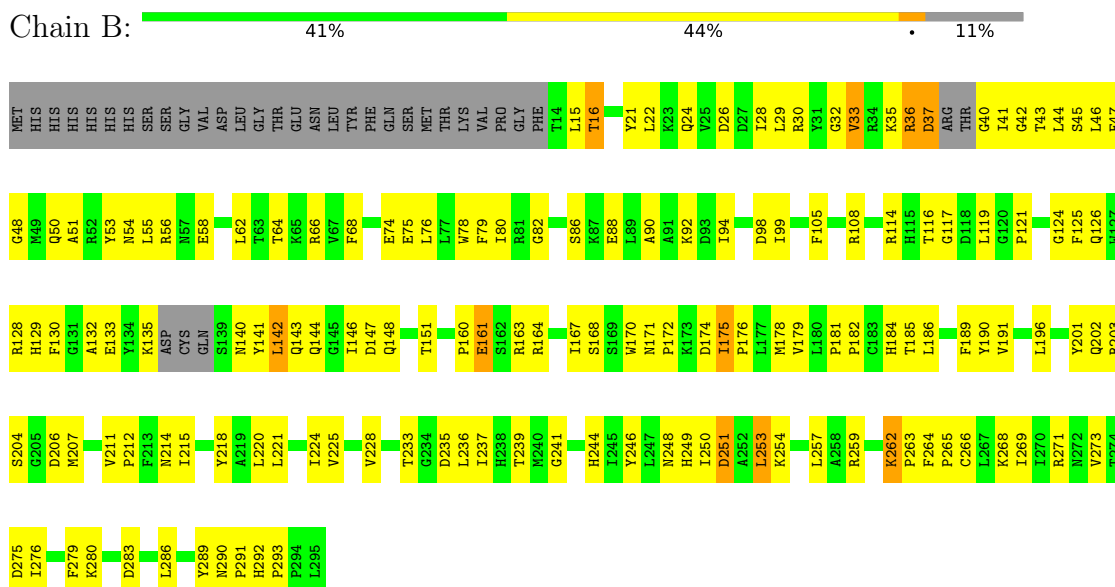
3 Residue-property plots [i](#)

These plots are drawn for all protein, RNA, DNA and oligosaccharide chains in the entry. The first graphic for a chain summarises the proportions of the various outlier classes displayed in the second graphic. The second graphic shows the sequence view annotated by issues in geometry. Residues are color-coded according to the number of geometric quality criteria for which they contain at least one outlier: green = 0, yellow = 1, orange = 2 and red = 3 or more. Stretches of 2 or more consecutive residues without any outlier are shown as a green connector. Residues present in the sample, but not in the model, are shown in grey.

- Molecule 1: Thymidylate synthase

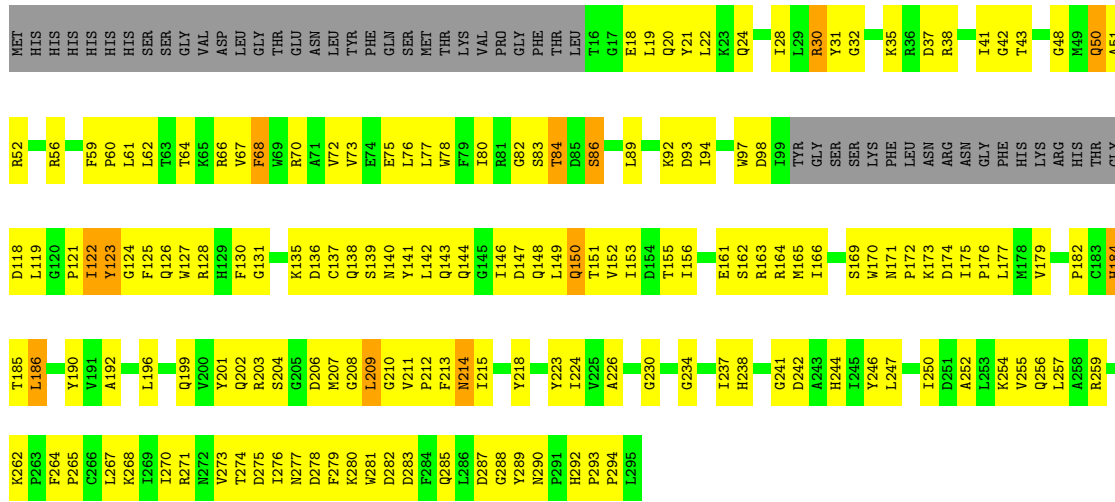


- Molecule 1: Thymidylate synthase



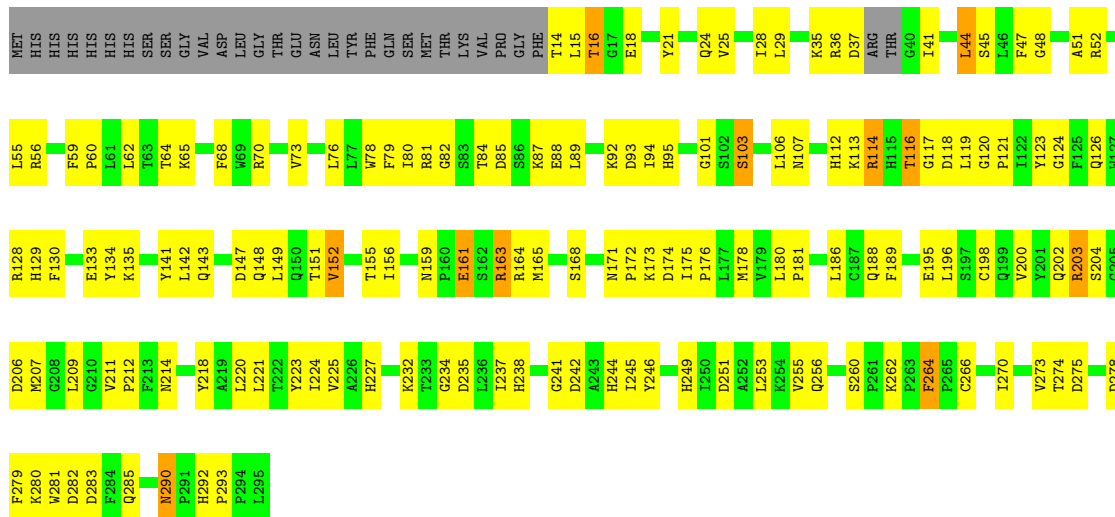
- Molecule 1: Thymidylate synthase

Chain C: 32% 49% 16%



- Molecule 1: Thymidylate synthase

Chain D: 43% 44% 10%



4 Data and refinement statistics

Property	Value	Source
Space group	P 32	Depositor
Cell constants a, b, c, α , β , γ	150.17Å 150.17Å 89.16Å 90.00° 90.00° 120.00°	Depositor
Resolution (Å)	29.84 – 2.90 29.84 – 2.90	Depositor EDS
% Data completeness (in resolution range)	96.8 (29.84-2.90) 96.7 (29.84-2.90)	Depositor EDS
R_{merge}	0.07	Depositor
R_{sym}	(Not available)	Depositor
$\langle I/\sigma(I) \rangle$ ¹	2.54 (at 2.90Å)	Xtriage
Refinement program	PHENIX 1.9_1692	Depositor
R, R_{free}	0.240 , 0.280 0.181 , 0.210	Depositor DCC
R_{free} test set	2342 reflections (4.86%)	wwPDB-VP
Wilson B-factor (Å ²)	48.6	Xtriage
Anisotropy	0.455	Xtriage
Bulk solvent k_{sol} (e/Å ³), B_{sol} (Å ²)	0.32 , 23.4	EDS
L-test for twinning ²	$\langle L \rangle = 0.38$, $\langle L^2 \rangle = 0.20$	Xtriage
Estimated twinning fraction	0.457 for -h,-k,l 0.138 for h,-h-k,-l 0.138 for -k,-h,-l	Xtriage
F_o, F_c correlation	0.92	EDS
Total number of atoms	8850	wwPDB-VP
Average B, all atoms (Å ²)	47.0	wwPDB-VP

Xtriage's analysis on translational NCS is as follows: *The largest off-origin peak in the Patterson function is 3.01% of the height of the origin peak. No significant pseudotranslation is detected.*

¹Intensities estimated from amplitudes.

²Theoretical values of $\langle |L| \rangle$, $\langle L^2 \rangle$ for acentric reflections are 0.5, 0.333 respectively for untwinned datasets, and 0.375, 0.2 for perfectly twinned datasets.

5 Model quality [i](#)

5.1 Standard geometry [i](#)

Bond lengths and bond angles in the following residue types are not validated in this section: UMP

The Z score for a bond length (or angle) is the number of standard deviations the observed value is removed from the expected value. A bond length (or angle) with $|Z| > 5$ is considered an outlier worth inspection. RMSZ is the root-mean-square of all Z scores of the bond lengths (or angles).

Mol	Chain	Bond lengths		Bond angles	
		RMSZ	# Z >5	RMSZ	# Z >5
1	A	0.28	0/2175	0.47	0/2953
1	B	0.28	0/2306	0.48	0/3126
1	C	0.29	0/2179	0.48	0/2959
1	D	0.28	0/2330	0.48	0/3160
All	All	0.28	0/8990	0.48	0/12198

There are no bond length outliers.

There are no bond angle outliers.

There are no chirality outliers.

There are no planarity outliers.

5.2 Too-close contacts [i](#)

In the following table, the Non-H and H(model) columns list the number of non-hydrogen atoms and hydrogen atoms in the chain respectively. The H(added) column lists the number of hydrogen atoms added and optimized by MolProbity. The Clashes column lists the number of clashes within the asymmetric unit, whereas Symm-Clashes lists symmetry-related clashes.

Mol	Chain	Non-H	H(model)	H(added)	Clashes	Symm-Clashes
1	A	2120	0	2106	162	0
1	B	2247	0	2229	158	0
1	C	2124	0	2107	170	0
1	D	2270	0	2247	141	0
2	A	20	0	11	7	0
2	B	20	0	11	5	0
2	C	20	0	11	10	0
2	D	20	0	11	7	0
3	A	2	0	0	0	0

Continued on next page...

Continued from previous page...

Mol	Chain	Non-H	H(model)	H(added)	Clashes	Symm-Clashes
3	B	4	0	0	0	0
3	C	2	0	0	0	0
3	D	1	0	0	0	0
All	All	8850	0	8733	588	0

The all-atom clashscore is defined as the number of clashes found per 1000 atoms (including hydrogen atoms). The all-atom clashscore for this structure is 33.

All (588) close contacts within the same asymmetric unit are listed below, sorted by their clash magnitude.

Atom-1	Atom-2	Interatomic distance (Å)	Clash overlap (Å)
1:D:62:LEU:HD12	1:D:212:PRO:HB3	1.41	1.03
1:A:62:LEU:HD22	1:A:212:PRO:HB3	1.44	0.98
1:A:192:ALA:HB1	1:B:33:VAL:HG11	1.46	0.94
1:B:142:LEU:HD12	1:B:143:GLN:HG3	1.52	0.91
1:B:43:THR:HG22	1:B:246:TYR:HA	1.53	0.90
1:D:292:HIS:HB3	1:D:293:PRO:HD2	1.53	0.90
1:B:271:ARG:HH22	1:B:280:LYS:HD2	1.38	0.86
1:C:163:ARG:HD3	1:D:204:SER:HB2	1.57	0.86
1:C:275:ASP:HB3	1:C:278:ASP:HB2	1.59	0.84
1:A:28:ILE:HG12	1:A:46:LEU:HD12	1.57	0.83
1:C:214:ASN:ND2	2:C:1001:UMP:O4	2.09	0.83
1:A:211:VAL:HG22	1:A:212:PRO:HD3	1.60	0.83
1:D:28:ILE:HD12	1:D:207:MET:HG3	1.63	0.81
1:D:214:ASN:ND2	2:D:1001:UMP:O4	2.13	0.80
1:D:65:LYS:HE2	1:D:209:LEU:HD21	1.64	0.79
1:B:121:PRO:O	1:B:178:MET:HG2	1.85	0.77
1:C:135:LYS:HG3	1:C:136:ASP:H	1.50	0.77
1:C:164:ARG:NE	2:D:1001:UMP:OP1	2.18	0.77
1:A:135:LYS:N	1:A:141:TYR:OH	2.14	0.77
1:A:16:THR:O	1:A:20:GLN:NE2	2.19	0.76
1:A:204:SER:HB2	1:B:163:ARG:HD3	1.68	0.76
1:B:114:ARG:NH2	1:B:119:LEU:O	2.20	0.75
1:A:22:LEU:HD22	1:A:257:LEU:HD22	1.69	0.75
2:A:1001:UMP:OP2	1:B:163:ARG:NH1	2.19	0.74
1:A:55:LEU:HD11	1:A:236:LEU:HB2	1.70	0.73
1:A:126:GLN:O	1:A:148:GLN:NE2	2.20	0.73
1:D:128:ARG:HH11	1:D:149:LEU:HB3	1.53	0.72
1:C:52:ARG:NH2	1:D:47:PHE:O	2.22	0.72
1:A:214:ASN:ND2	2:A:1001:UMP:O4	2.23	0.72
1:A:84:THR:HB	1:A:122:ILE:HG13	1.70	0.72

Continued on next page...

Continued from previous page...

Atom-1	Atom-2	Interatomic distance (Å)	Clash overlap (Å)
1:C:204:SER:HB2	1:D:163:ARG:HG2	1.72	0.72
1:D:114:ARG:HG2	1:D:118:ASP:HB3	1.71	0.72
1:B:140:ASN:HD21	1:B:142:LEU:HD23	1.54	0.72
1:C:21:TYR:OH	1:C:207:MET:O	2.08	0.72
1:C:24:GLN:O	1:C:28:ILE:HG13	1.89	0.71
1:A:164:ARG:NH1	2:B:1001:UMP:OP2	2.24	0.71
1:D:151:THR:O	1:D:155:THR:HG23	1.91	0.71
1:D:21:TYR:OH	1:D:207:MET:O	2.09	0.71
1:B:251:ASP:HA	1:B:254:LYS:HE2	1.71	0.70
1:A:210:GLY:O	1:A:214:ASN:ND2	2.24	0.70
1:A:128:ARG:HH11	1:A:149:LEU:HD23	1.56	0.70
1:C:149:LEU:O	1:C:153:ILE:HG13	1.92	0.70
1:A:219:ALA:HB2	1:A:236:LEU:HD22	1.73	0.69
1:A:85:ASP:OD2	1:A:87:LYS:N	2.25	0.69
1:D:81:ARG:NH1	1:D:88:GLU:OE1	2.25	0.69
1:A:289:TYR:CE1	1:A:291:PRO:HG3	2.28	0.69
1:C:262:LYS:HE3	1:C:292:HIS:CD2	2.28	0.68
1:B:211:VAL:HB	1:B:212:PRO:HD3	1.76	0.68
1:D:203:ARG:NH2	2:D:1001:UMP:OP1	2.26	0.68
1:B:271:ARG:NH2	1:B:280:LYS:HD2	2.07	0.68
1:C:163:ARG:O	1:D:203:ARG:HG3	1.93	0.68
1:C:247:LEU:HA	1:C:250:ILE:HG13	1.75	0.68
1:A:273:VAL:HG11	1:A:278:ASP:HB3	1.76	0.68
1:B:54:ASN:OD1	1:B:56:ARG:NH1	2.26	0.68
1:D:35:LYS:HE2	1:D:45:SER:HB3	1.75	0.68
1:B:56:ARG:NH2	1:B:235:ASP:OD1	2.27	0.68
1:D:147:ASP:O	1:D:151:THR:HG23	1.93	0.68
1:C:38:ARG:NH2	2:C:1001:UMP:O5'	2.25	0.67
1:A:21:TYR:OH	1:A:207:MET:O	2.13	0.67
2:A:1001:UMP:OP2	1:B:163:ARG:HD2	1.95	0.67
1:C:128:ARG:HH22	1:C:276:ILE:HG21	1.57	0.67
1:B:202:GLN:O	1:B:241:GLY:N	2.27	0.67
1:D:24:GLN:NE2	1:D:51:ALA:HB2	2.10	0.67
1:C:175:ILE:HB	1:C:176:PRO:HD3	1.76	0.66
1:B:21:TYR:OH	1:B:207:MET:O	2.13	0.66
1:C:276:ILE:HD12	1:C:277:ASN:HB2	1.76	0.66
1:D:200:VAL:HG21	1:D:218:TYR:CG	2.30	0.66
1:C:50:GLN:HG3	1:C:51:ALA:N	2.10	0.66
1:A:59:PHE:N	1:A:265:PRO:O	2.28	0.66
1:D:211:VAL:HB	1:D:212:PRO:HD3	1.78	0.66
1:B:108:ARG:NH2	1:C:140:ASN:OD1	2.29	0.66

Continued on next page...

Continued from previous page...

Atom-1	Atom-2	Interatomic distance (Å)	Clash overlap (Å)
1:A:52:ARG:NH2	1:B:47:PHE:O	2.29	0.65
1:B:37:ASP:OD1	1:B:41:ILE:N	2.29	0.65
1:D:262:LYS:HD2	1:D:290:ASN:O	1.96	0.65
1:A:211:VAL:CG2	1:A:212:PRO:HD3	2.26	0.65
1:A:279:PHE:C	1:A:280:LYS:HD2	2.17	0.65
1:B:24:GLN:NE2	1:B:51:ALA:HB2	2.11	0.65
1:B:259:ARG:NH1	1:B:293:PRO:O	2.19	0.65
1:B:41:ILE:HG13	1:B:246:TYR:HD2	1.60	0.65
1:C:75:GLU:OE2	1:C:97:TRP:NE1	2.20	0.65
1:C:163:ARG:CD	1:D:204:SER:HB2	2.25	0.65
1:A:22:LEU:HD22	1:A:257:LEU:CD2	2.27	0.65
1:A:78:TRP:HB2	1:A:89:LEU:HD21	1.76	0.65
1:A:26:ASP:O	1:A:30:ARG:HG3	1.98	0.64
1:D:56:ARG:NH1	1:D:234:GLY:O	2.30	0.64
1:D:203:ARG:HG2	1:D:204:SER:N	2.12	0.64
1:A:148:GLN:O	1:A:152:VAL:HG23	1.96	0.64
1:A:210:GLY:HA3	2:A:1001:UMP:N3	2.12	0.64
1:A:25:VAL:HG12	1:A:29:LEU:HD12	1.79	0.64
1:B:74:GLU:HG3	1:B:94:ILE:HD11	1.79	0.64
1:B:135:LYS:N	1:B:141:TYR:OH	2.21	0.64
1:A:54:ASN:OD1	1:A:56:ARG:HG3	1.98	0.63
1:C:271:ARG:CZ	1:C:273:VAL:HG22	2.28	0.63
1:D:155:THR:O	1:D:159:ASN:N	2.24	0.63
1:C:152:VAL:O	1:C:156:ILE:HG13	1.98	0.63
1:B:116:THR:OG1	1:C:278:ASP:OD2	2.17	0.63
1:D:45:SER:OG	1:D:242:ASP:OD1	2.16	0.63
1:D:181:PRO:HB2	1:D:203:ARG:NH1	2.13	0.62
1:D:36:ARG:HG2	1:D:37:ASP:N	2.14	0.62
1:D:209:LEU:O	1:D:212:PRO:HD2	1.99	0.62
1:D:135:LYS:N	1:D:141:TYR:OH	2.24	0.62
1:A:267:LEU:HD12	1:A:268:LYS:H	1.64	0.62
1:B:189:PHE:HD1	1:B:196:LEU:HD11	1.65	0.61
1:C:211:VAL:HB	1:C:212:PRO:HD3	1.81	0.61
1:A:180:LEU:HD12	1:B:164:ARG:HH21	1.65	0.61
1:A:206:ASP:OD2	1:A:209:LEU:N	2.27	0.61
1:B:171:ASN:ND2	1:B:174:ASP:OD2	2.34	0.61
1:C:56:ARG:NH1	1:C:234:GLY:O	2.34	0.61
1:A:273:VAL:CG1	1:A:278:ASP:HB3	2.30	0.61
1:D:103:SER:O	1:D:107:ASN:ND2	2.26	0.61
1:B:246:TYR:HH	2:B:1001:UMP:HO3'	1.48	0.60
1:B:259:ARG:HB3	1:B:292:HIS:ND1	2.16	0.60

Continued on next page...

Continued from previous page...

Atom-1	Atom-2	Interatomic distance (Å)	Clash overlap (Å)
1:C:122:ILE:HD12	1:C:124:GLY:H	1.65	0.60
1:A:242:ASP:HB2	1:B:190:TYR:CD1	2.36	0.60
1:A:61:LEU:HD12	1:A:216:ALA:HB2	1.81	0.60
1:C:259:ARG:NH1	1:C:293:PRO:O	2.33	0.60
1:D:112:HIS:CD2	1:D:113:LYS:HE2	2.36	0.60
1:C:207:MET:SD	1:C:211:VAL:HG21	2.42	0.60
1:B:37:ASP:OD1	1:B:40:GLY:N	2.35	0.60
1:B:80:ILE:O	1:B:128:ARG:NH2	2.29	0.60
1:C:204:SER:HB2	1:D:163:ARG:HB3	1.84	0.60
1:C:211:VAL:O	1:C:215:ILE:HG13	2.02	0.60
1:C:262:LYS:HE3	1:C:292:HIS:HD2	1.65	0.60
1:C:61:LEU:HG	1:C:67:VAL:HG11	1.84	0.59
1:A:152:VAL:O	1:A:156:ILE:HG13	2.01	0.59
1:B:262:LYS:HB3	1:B:263:PRO:HD2	1.84	0.59
1:C:204:SER:HB2	1:D:163:ARG:CG	2.31	0.59
1:A:130:PHE:HB2	1:A:148:GLN:NE2	2.17	0.59
1:B:133:GLU:N	1:B:133:GLU:OE1	2.35	0.59
1:B:224:ILE:O	1:B:228:VAL:HG23	2.01	0.59
1:B:265:PRO:HB2	1:B:286:LEU:HD22	1.84	0.59
1:C:30:ARG:HG3	1:C:31:TYR:CG	2.38	0.59
1:C:268:LYS:HZ2	1:C:287:ASP:HB2	1.67	0.58
1:D:28:ILE:CD1	1:D:207:MET:HG3	2.31	0.58
1:A:37:ASP:OD1	1:B:163:ARG:NH2	2.24	0.58
1:B:105:PHE:HE2	1:B:179:VAL:HG22	1.67	0.58
1:A:180:LEU:CD1	1:B:164:ARG:HH21	2.15	0.58
1:C:201:TYR:OH	1:D:188:GLN:OE1	2.15	0.58
1:D:92:LYS:HB2	1:D:94:ILE:HD12	1.86	0.58
1:C:276:ILE:HD12	1:C:277:ASN:H	1.68	0.58
1:A:47:PHE:CE1	1:B:190:TYR:HB2	2.39	0.58
1:A:77:LEU:HD22	1:A:279:PHE:O	2.04	0.58
1:D:76:LEU:O	1:D:80:ILE:HG13	2.04	0.58
1:A:37:ASP:OD2	1:A:39:THR:OG1	2.22	0.58
1:A:151:THR:O	1:A:155:THR:OG1	2.17	0.58
1:C:206:ASP:N	2:C:1001:UMP:O2	2.36	0.58
1:B:265:PRO:HB3	1:B:289:TYR:HB2	1.86	0.57
1:D:70:ARG:HA	1:D:281:TRP:CZ3	2.39	0.57
1:A:76:LEU:HD21	1:A:224:ILE:HD12	1.86	0.57
1:B:259:ARG:HB3	1:B:292:HIS:CE1	2.39	0.57
1:D:206:ASP:N	1:D:211:VAL:HG23	2.19	0.57
1:D:251:ASP:O	1:D:255:VAL:HG23	2.05	0.57
1:D:24:GLN:O	1:D:28:ILE:HG13	2.04	0.57

Continued on next page...

Continued from previous page...

Atom-1	Atom-2	Interatomic distance (Å)	Clash overlap (Å)
1:D:152:VAL:O	1:D:156:ILE:HG13	2.04	0.57
1:A:180:LEU:HD12	1:A:181:PRO:HD2	1.86	0.57
1:C:18:GLU:HB2	1:C:264:PHE:HZ	1.69	0.57
1:A:212:PRO:HA	1:A:215:ILE:HD12	1.86	0.57
1:C:169:SER:N	1:C:185:THR:O	2.30	0.57
1:A:122:ILE:HD12	1:A:124:GLY:H	1.69	0.57
1:A:130:PHE:HB2	1:A:148:GLN:HE21	1.70	0.57
1:A:38:ARG:NE	2:A:1001:UMP:OP1	2.27	0.57
1:C:202:GLN:O	1:C:241:GLY:N	2.34	0.56
1:C:131:GLY:HA2	1:C:173:LYS:HE3	1.87	0.56
1:C:147:ASP:OD2	1:C:150:GLN:HB2	2.05	0.56
1:D:126:GLN:NE2	1:D:174:ASP:OD2	2.33	0.56
1:B:75:GLU:HG3	1:B:76:LEU:N	2.20	0.56
1:C:70:ARG:HA	1:C:281:TRP:CZ3	2.40	0.56
1:C:135:LYS:HD2	1:C:139:SER:OG	2.05	0.56
1:C:164:ARG:HD3	1:D:181:PRO:HG2	1.86	0.56
1:D:280:LYS:N	1:D:283:ASP:OD2	2.36	0.56
1:B:178:MET:SD	1:B:182:PRO:HD3	2.45	0.56
1:C:92:LYS:O	1:C:93:ASP:HB2	2.05	0.56
1:C:214:ASN:O	1:C:218:TYR:N	2.31	0.56
1:D:148:GLN:O	1:D:152:VAL:HG13	2.04	0.56
1:C:276:ILE:HD12	1:C:277:ASN:N	2.20	0.56
1:D:93:ASP:HA	1:D:95:HIS:NE2	2.20	0.56
1:A:79:PHE:CE1	1:A:123:TYR:HB2	2.40	0.56
1:C:59:PHE:O	1:C:264:PHE:HB3	2.05	0.56
1:C:141:TYR:O	1:C:144:GLN:HB2	2.06	0.56
2:C:1001:UMP:OP1	1:D:164:ARG:NE	2.37	0.56
1:A:246:TYR:OH	2:A:1001:UMP:O3'	2.23	0.56
1:B:148:GLN:OE1	1:B:168:SER:N	2.36	0.56
1:C:59:PHE:CE1	1:C:267:LEU:HD22	2.41	0.56
1:A:65:LYS:HE2	1:A:295:LEU:H	1.71	0.55
1:A:271:ARG:NH1	1:A:278:ASP:OD2	2.39	0.55
1:A:70:ARG:HG3	1:A:281:TRP:HE1	1.70	0.55
1:A:175:ILE:HB	1:A:176:PRO:HD3	1.87	0.55
1:B:271:ARG:NH2	1:B:283:ASP:OD2	2.38	0.55
1:A:164:ARG:CD	1:B:181:PRO:HG2	2.36	0.55
1:A:163:ARG:O	1:A:188:GLN:NE2	2.38	0.55
1:C:242:ASP:OD1	1:C:244:HIS:ND1	2.38	0.55
1:D:106:LEU:HD13	1:D:114:ARG:HB3	1.87	0.55
1:A:70:ARG:CG	1:A:281:TRP:HE1	2.20	0.55
1:B:171:ASN:O	1:B:174:ASP:N	2.38	0.55

Continued on next page...

Continued from previous page...

Atom-1	Atom-2	Interatomic distance (Å)	Clash overlap (Å)
1:C:35:LYS:O	1:C:43:THR:N	2.31	0.55
1:D:60:PRO:HA	1:D:264:PHE:CD2	2.41	0.55
1:D:84:THR:CG2	1:D:119:LEU:HB2	2.37	0.55
1:A:25:VAL:HB	1:A:257:LEU:HD11	1.89	0.55
1:A:50:GLN:OE1	1:B:50:GLN:HB2	2.06	0.55
1:D:59:PHE:O	1:D:264:PHE:HB3	2.06	0.55
1:D:270:ILE:HD11	1:D:285:GLN:HB2	1.88	0.55
1:C:128:ARG:HH12	1:C:276:ILE:HB	1.72	0.55
1:C:182:PRO:O	1:C:203:ARG:NH1	2.39	0.55
1:D:155:THR:OG1	1:D:165:MET:SD	2.63	0.55
1:B:135:LYS:H	1:B:141:TYR:HH	1.51	0.55
1:C:135:LYS:HG3	1:C:136:ASP:N	2.19	0.55
1:A:204:SER:CB	1:B:163:ARG:HD3	2.36	0.55
1:A:69:TRP:O	1:A:73:VAL:HG23	2.06	0.54
1:C:60:PRO:HA	1:C:264:PHE:CD2	2.42	0.54
1:C:204:SER:HB2	1:D:163:ARG:CB	2.37	0.54
1:D:260:SER:O	1:D:292:HIS:NE2	2.40	0.54
1:C:41:ILE:HD12	1:C:42:GLY:H	1.73	0.54
1:B:15:LEU:O	1:B:16:THR:HG22	2.06	0.54
1:B:74:GLU:HG3	1:B:94:ILE:CD1	2.38	0.54
1:B:140:ASN:ND2	1:B:142:LEU:HD23	2.23	0.54
1:C:142:LEU:O	1:C:143:GLN:HB2	2.08	0.54
1:D:64:THR:OG1	1:D:256:GLN:NE2	2.30	0.54
1:A:184:HIS:CD2	1:A:218:TYR:HE2	2.26	0.54
1:A:242:ASP:HB2	1:B:190:TYR:HD1	1.72	0.54
1:B:74:GLU:HB2	1:B:94:ILE:HD12	1.90	0.54
1:B:121:PRO:HB2	1:B:126:GLN:NE2	2.22	0.54
1:D:70:ARG:HG3	1:D:281:TRP:CZ3	2.43	0.54
1:A:128:ARG:NH1	1:A:149:LEU:HD23	2.23	0.54
1:B:249:HIS:O	1:B:253:LEU:HB2	2.06	0.54
1:A:210:GLY:HA3	2:A:1001:UMP:HN3	1.72	0.54
1:A:250:ILE:HG23	1:A:254:LYS:HE3	1.89	0.54
1:D:246:TYR:OH	2:D:1001:UMP:O3'	2.22	0.54
1:A:129:HIS:NE2	1:A:142:LEU:HA	2.22	0.54
1:B:75:GLU:O	1:B:79:PHE:N	2.40	0.54
1:A:22:LEU:HD11	1:A:64:THR:HG21	1.89	0.53
1:A:78:TRP:NE1	1:A:83:SER:O	2.41	0.53
1:C:84:THR:HB	1:C:122:ILE:HG13	1.89	0.53
1:B:160:PRO:O	1:B:191:VAL:HB	2.08	0.53
1:B:212:PRO:HA	1:B:215:ILE:HD12	1.91	0.53
1:B:80:ILE:HD13	1:B:276:ILE:HG12	1.90	0.53

Continued on next page...

Continued from previous page...

Atom-1	Atom-2	Interatomic distance (Å)	Clash overlap (Å)
1:C:268:LYS:NZ	1:C:287:ASP:HB2	2.23	0.53
1:A:58:GLU:O	1:A:223:TYR:OH	2.26	0.53
1:B:41:ILE:HG13	1:B:246:TYR:CD2	2.41	0.53
1:B:76:LEU:O	1:B:80:ILE:HG13	2.09	0.53
1:B:76:LEU:O	1:B:80:ILE:N	2.36	0.53
1:B:142:LEU:HD12	1:B:143:GLN:CG	2.33	0.53
1:C:123:TYR:CD2	1:C:123:TYR:N	2.77	0.53
1:C:127:TRP:O	1:C:148:GLN:HG3	2.08	0.53
1:D:70:ARG:HG3	1:D:281:TRP:CE3	2.44	0.53
1:A:81:ARG:NE	1:A:88:GLU:OE2	2.41	0.53
1:B:171:ASN:C	1:B:175:ILE:HD13	2.29	0.53
1:B:88:GLU:O	1:B:92:LYS:NZ	2.41	0.53
1:C:265:PRO:HB3	1:C:288:GLY:C	2.30	0.53
1:D:101:GLY:HA3	1:D:117:GLY:HA2	1.90	0.52
1:A:24:GLN:O	1:A:28:ILE:HG13	2.08	0.52
1:B:125:PHE:CZ	1:B:132:ALA:HB3	2.44	0.52
1:A:169:SER:O	1:A:182:PRO:HG3	2.10	0.52
1:C:20:GLN:O	1:C:24:GLN:HG3	2.09	0.52
1:D:73:VAL:HG22	1:D:220:LEU:CD2	2.40	0.52
1:D:202:GLN:OE1	1:D:238:HIS:NE2	2.34	0.52
1:B:185:THR:O	1:B:186:LEU:HB3	2.10	0.52
1:B:237:ILE:HD12	1:B:237:ILE:N	2.25	0.52
1:C:237:ILE:N	1:C:237:ILE:HD12	2.25	0.52
1:D:189:PHE:CD1	1:D:196:LEU:HD11	2.45	0.52
1:D:121:PRO:HG3	1:D:134:TYR:CG	2.45	0.52
1:B:142:LEU:O	1:B:143:GLN:HB2	2.10	0.52
1:B:268:LYS:HG2	1:B:269:ILE:N	2.25	0.52
1:C:163:ARG:HH11	2:D:1001:UMP:P	2.33	0.52
1:D:128:ARG:NH1	1:D:149:LEU:HB3	2.24	0.52
1:B:246:TYR:HB3	1:B:248:ASN:OD1	2.11	0.51
1:C:84:THR:HB	1:C:122:ILE:CG1	2.40	0.51
1:B:28:ILE:O	1:B:32:GLY:N	2.43	0.51
1:A:154:ASP:O	1:A:158:THR:HG23	2.10	0.51
1:B:108:ARG:NH2	1:C:138:GLN:O	2.44	0.51
1:D:55:LEU:HD22	1:D:223:TYR:HE1	1.75	0.51
1:B:24:GLN:O	1:B:28:ILE:HG13	2.11	0.51
1:C:224:ILE:HG23	1:C:279:PHE:CZ	2.45	0.51
1:D:35:LYS:HE2	1:D:45:SER:CB	2.41	0.51
1:B:168:SER:HA	1:B:186:LEU:HB3	1.93	0.51
1:C:122:ILE:HD12	1:C:124:GLY:N	2.25	0.51
1:C:59:PHE:N	1:C:265:PRO:O	2.39	0.51

Continued on next page...

Continued from previous page...

Atom-1	Atom-2	Interatomic distance (Å)	Clash overlap (Å)
1:C:224:ILE:HG23	1:C:279:PHE:CE2	2.45	0.51
1:A:185:THR:HG21	1:B:186:LEU:HD21	1.93	0.51
1:B:262:LYS:NZ	1:B:290:ASN:HB3	2.26	0.51
1:C:37:ASP:HB2	1:C:43:THR:CG2	2.40	0.51
1:A:289:TYR:CZ	1:A:291:PRO:HG3	2.45	0.51
1:D:249:HIS:O	1:D:253:LEU:HG	2.10	0.51
1:C:274:THR:O	1:C:275:ASP:HB2	2.11	0.51
1:B:36:ARG:HA	1:B:42:GLY:HA2	1.93	0.50
1:C:19:LEU:HD23	1:C:22:LEU:HD12	1.92	0.50
1:D:148:GLN:OE1	1:D:168:SER:N	2.30	0.50
1:A:158:THR:OG1	1:A:159:ASN:N	2.42	0.50
1:B:140:ASN:HD21	1:B:142:LEU:CD2	2.24	0.50
1:C:247:LEU:CD2	1:C:250:ILE:HD11	2.42	0.50
1:A:164:ARG:NH1	1:B:181:PRO:HD2	2.26	0.50
1:A:225:VAL:O	1:A:229:THR:OG1	2.23	0.50
1:C:208:GLY:O	1:C:209:LEU:HD13	2.12	0.50
1:B:259:ARG:HD2	1:B:292:HIS:ND1	2.26	0.50
1:C:163:ARG:HD2	2:D:1001:UMP:OP2	2.11	0.50
1:A:66:ARG:HB3	1:A:294:PRO:HG3	1.93	0.50
1:A:149:LEU:O	1:A:153:ILE:HG13	2.12	0.50
1:A:167:ILE:HB	1:A:187:CYS:SG	2.52	0.50
1:A:168:SER:HA	1:A:186:LEU:HB3	1.94	0.50
1:A:275:ASP:OD1	1:A:276:ILE:N	2.45	0.50
1:B:129:HIS:HB3	1:B:144:GLN:O	2.12	0.50
1:C:123:TYR:H	1:C:123:TYR:HD2	1.60	0.50
1:C:271:ARG:HD3	1:C:273:VAL:HG22	1.94	0.50
1:D:224:ILE:HG23	1:D:279:PHE:CZ	2.47	0.50
1:A:56:ARG:NH2	1:A:235:ASP:OD1	2.45	0.49
1:B:43:THR:HG22	1:B:246:TYR:CA	2.35	0.49
1:C:118:ASP:N	1:C:137:CYS:HG	2.10	0.49
1:D:189:PHE:HD1	1:D:196:LEU:HD11	1.77	0.49
1:B:268:LYS:HG2	1:B:269:ILE:H	1.77	0.49
1:C:62:LEU:HD12	1:C:212:PRO:HB3	1.93	0.49
1:A:204:SER:HB2	1:B:163:ARG:CD	2.40	0.49
1:C:204:SER:CB	1:D:163:ARG:HG2	2.40	0.49
1:C:84:THR:O	1:C:84:THR:OG1	2.30	0.49
1:C:185:THR:OG1	1:C:186:LEU:HG	2.12	0.49
1:B:74:GLU:CB	1:B:94:ILE:HD12	2.43	0.49
1:B:148:GLN:CB	1:B:167:ILE:HG23	2.42	0.49
1:B:211:VAL:CB	1:B:212:PRO:HD3	2.43	0.49
1:A:43:THR:HB	1:A:244:HIS:HB2	1.94	0.49

Continued on next page...

Continued from previous page...

Atom-1	Atom-2	Interatomic distance (Å)	Clash overlap (Å)
1:B:184:HIS:H	1:B:184:HIS:CD2	2.31	0.49
1:B:119:LEU:O	1:B:179:VAL:HB	2.12	0.49
1:C:123:TYR:N	1:C:123:TYR:HD2	2.09	0.49
1:D:18:GLU:HG3	1:D:62:LEU:HD22	1.95	0.49
1:A:39:THR:OG1	1:A:41:ILE:HG22	2.12	0.49
1:B:66:ARG:NH2	1:B:291:PRO:HD2	2.28	0.49
1:C:76:LEU:O	1:C:80:ILE:HG13	2.11	0.49
1:A:245:ILE:HD13	1:A:253:LEU:HD13	1.95	0.49
1:A:290:ASN:N	1:A:291:PRO:HD3	2.28	0.49
1:C:61:LEU:CG	1:C:67:VAL:HG11	2.43	0.48
1:C:68:PHE:O	1:C:72:VAL:HG23	2.12	0.48
1:D:292:HIS:HB3	1:D:293:PRO:CD	2.32	0.48
1:A:20:GLN:O	1:A:24:GLN:HG3	2.12	0.48
1:A:289:TYR:C	1:A:291:PRO:HD3	2.33	0.48
1:B:262:LYS:HB3	1:B:263:PRO:CD	2.42	0.48
1:C:18:GLU:HB2	1:C:264:PHE:CZ	2.46	0.48
1:C:146:ILE:HD12	1:C:146:ILE:N	2.29	0.48
1:D:15:LEU:O	1:D:16:THR:HG22	2.13	0.48
1:D:273:VAL:HG12	1:D:275:ASP:O	2.12	0.48
1:A:185:THR:HG21	1:B:186:LEU:CD2	2.43	0.48
1:D:36:ARG:HG2	1:D:37:ASP:O	2.13	0.48
1:D:180:LEU:HG	1:D:181:PRO:HD2	1.94	0.48
1:B:186:LEU:C	1:B:186:LEU:HD12	2.33	0.48
1:C:128:ARG:NH1	1:C:276:ILE:HD13	2.28	0.48
1:D:70:ARG:CZ	1:D:94:ILE:HD11	2.44	0.48
1:A:96:ILE:HG13	1:A:97:TRP:CD1	2.48	0.48
1:B:148:GLN:HB3	1:B:167:ILE:HG23	1.96	0.48
1:C:30:ARG:HG3	1:C:31:TYR:CD1	2.49	0.48
1:D:87:LYS:NZ	1:D:116:THR:O	2.31	0.48
1:D:202:GLN:HG2	1:D:204:SER:O	2.14	0.48
1:A:199:GLN:HA	1:A:237:ILE:O	2.14	0.48
1:D:29:LEU:HA	1:D:44:LEU:HD12	1.96	0.48
1:A:92:LYS:HD3	1:A:92:LYS:N	2.29	0.48
1:C:199:GLN:HG3	1:C:237:ILE:HB	1.96	0.48
1:D:85:ASP:OD1	1:D:87:LYS:HG3	2.14	0.48
1:A:122:ILE:CD1	1:A:124:GLY:H	2.27	0.48
1:C:190:TYR:O	1:C:196:LEU:HD12	2.14	0.48
1:D:84:THR:HG23	1:D:119:LEU:HB2	1.95	0.48
1:B:50:GLN:HG3	1:B:239:THR:OG1	2.14	0.47
1:D:62:LEU:HD12	1:D:212:PRO:CB	2.28	0.47
1:D:237:ILE:N	1:D:237:ILE:HD12	2.29	0.47

Continued on next page...

Continued from previous page...

Atom-1	Atom-2	Interatomic distance (Å)	Clash overlap (Å)
1:C:130:PHE:H	1:C:146:ILE:H	1.61	0.47
1:C:172:PRO:HA	1:C:175:ILE:HG12	1.96	0.47
1:D:126:GLN:O	1:D:148:GLN:NE2	2.41	0.47
1:D:200:VAL:HG11	1:D:218:TYR:CE2	2.50	0.47
1:B:82:GLY:HA2	1:B:124:GLY:O	2.15	0.47
1:B:168:SER:HA	1:B:186:LEU:CB	2.44	0.47
1:B:250:ILE:O	1:B:254:LYS:HG3	2.14	0.47
1:C:68:PHE:HE2	1:C:70:ARG:HB3	1.79	0.47
1:A:44:LEU:O	1:A:244:HIS:HA	2.14	0.47
1:A:61:LEU:HD12	1:A:216:ALA:CB	2.44	0.47
1:B:44:LEU:O	1:B:244:HIS:HA	2.13	0.47
1:B:206:ASP:N	2:B:1001:UMP:O2	2.48	0.47
1:C:80:ILE:O	1:C:128:ARG:HD2	2.15	0.47
1:A:195:GLU:HG2	1:A:232:LYS:HE3	1.96	0.47
1:C:118:ASP:N	1:C:137:CYS:SG	2.88	0.47
1:C:89:LEU:HD22	1:C:94:ILE:CD1	2.45	0.47
1:C:131:GLY:HA2	1:C:173:LYS:CE	2.45	0.47
1:C:162:SER:HB3	1:C:165:MET:HG3	1.97	0.46
1:A:84:THR:HB	1:A:122:ILE:CG1	2.40	0.46
1:A:281:TRP:HE3	1:A:282:ASP:HA	1.80	0.46
1:C:128:ARG:HH22	1:C:276:ILE:CG2	2.23	0.46
1:D:56:ARG:HH12	1:D:235:ASP:CG	2.19	0.46
1:D:101:GLY:CA	1:D:117:GLY:HA2	2.45	0.46
1:C:171:ASN:O	1:C:175:ILE:HG12	2.15	0.46
1:C:271:ARG:NE	1:C:273:VAL:HG22	2.30	0.46
1:A:271:ARG:NH1	1:A:273:VAL:HG22	2.29	0.46
1:C:226:ALA:O	1:C:230:GLY:N	2.49	0.46
1:C:270:ILE:HD11	1:C:285:GLN:OE1	2.16	0.46
1:B:86:SER:OG	1:B:117:GLY:HA2	2.15	0.46
1:C:48:GLY:HA3	1:D:237:ILE:HG12	1.96	0.46
1:B:249:HIS:HB3	1:B:253:LEU:HD23	1.98	0.46
1:B:268:LYS:NZ	1:B:269:ILE:O	2.49	0.46
1:D:173:LYS:O	1:D:176:PRO:HD2	2.16	0.46
1:A:20:GLN:NE2	1:A:52:ARG:O	2.25	0.46
1:A:173:LYS:HE3	1:B:130:PHE:O	2.16	0.46
1:B:224:ILE:HG23	1:B:279:PHE:CE2	2.51	0.46
1:A:37:ASP:HB2	1:A:43:THR:HG23	1.97	0.46
1:A:267:LEU:HD12	1:A:268:LYS:N	2.29	0.46
1:A:289:TYR:CD1	1:A:291:PRO:HG3	2.50	0.46
1:B:24:GLN:HE22	1:B:51:ALA:HB2	1.80	0.46
1:B:203:ARG:HG3	1:B:204:SER:N	2.30	0.46

Continued on next page...

Continued from previous page...

Atom-1	Atom-2	Interatomic distance (Å)	Clash overlap (Å)
1:A:69:TRP:HD1	1:A:70:ARG:CZ	2.28	0.46
1:A:280:LYS:HB3	1:A:280:LYS:HE3	1.77	0.46
1:B:124:GLY:O	1:B:128:ARG:HG2	2.15	0.46
1:B:130:PHE:H	1:B:146:ILE:H	1.63	0.46
1:B:189:PHE:CD1	1:B:196:LEU:HD11	2.48	0.46
1:B:203:ARG:NH1	2:B:1001:UMP:OP1	2.35	0.46
1:C:59:PHE:HD2	1:C:61:LEU:HB2	1.81	0.46
1:A:84:THR:O	1:A:84:THR:OG1	2.31	0.45
1:C:172:PRO:HD2	1:D:130:PHE:CE1	2.51	0.45
1:D:188:GLN:O	1:D:198:CYS:HA	2.16	0.45
1:A:130:PHE:CE1	1:B:172:PRO:HD2	2.51	0.45
1:C:70:ARG:HG3	1:C:281:TRP:CZ2	2.51	0.45
1:D:78:TRP:HE1	1:D:85:ASP:H	1.64	0.45
1:D:84:THR:HG23	1:D:119:LEU:HD23	1.98	0.45
1:D:220:LEU:O	1:D:224:ILE:HG13	2.16	0.45
1:A:37:ASP:O	1:A:40:GLY:N	2.45	0.45
1:A:163:ARG:NH1	2:B:1001:UMP:O5'	2.49	0.45
1:C:119:LEU:HD22	1:C:179:VAL:HG11	1.96	0.45
1:C:262:LYS:NZ	1:C:290:ASN:O	2.32	0.45
1:D:60:PRO:HA	1:D:264:PHE:CE2	2.52	0.45
1:A:204:SER:HB2	1:B:163:ARG:HB3	1.98	0.45
1:B:128:ARG:N	1:B:128:ARG:HD2	2.32	0.45
1:B:147:ASP:O	1:B:151:THR:HB	2.17	0.45
1:C:276:ILE:CD1	1:C:277:ASN:H	2.30	0.45
1:D:21:TYR:O	1:D:25:VAL:HG23	2.16	0.45
1:A:61:LEU:HD23	1:A:289:TYR:CZ	2.51	0.45
1:B:62:LEU:HD12	1:B:212:PRO:HB3	1.98	0.45
1:C:199:GLN:OE1	1:D:48:GLY:HA2	2.16	0.45
1:A:41:ILE:HG12	1:A:42:GLY:N	2.32	0.45
1:A:279:PHE:O	1:A:280:LYS:HD2	2.17	0.45
1:B:248:ASN:OD1	1:B:248:ASN:N	2.42	0.45
1:C:48:GLY:O	1:D:52:ARG:NH2	2.50	0.45
1:C:121:PRO:HG2	1:C:174:ASP:HB3	1.99	0.45
1:C:151:THR:O	1:C:155:THR:OG1	2.29	0.45
1:A:76:LEU:O	1:A:79:PHE:N	2.47	0.45
1:B:170:TRP:NE1	1:B:172:PRO:HG3	2.31	0.45
1:C:128:ARG:HA	1:C:147:ASP:OD1	2.17	0.45
1:A:161:GLU:OE1	1:B:35:LYS:HD2	2.17	0.45
1:D:171:ASN:O	1:D:175:ILE:HG12	2.17	0.45
1:C:86:SER:HB2	1:C:98:ASP:OD1	2.17	0.45
1:A:281:TRP:CE3	1:A:282:ASP:HA	2.52	0.44

Continued on next page...

Continued from previous page...

Atom-1	Atom-2	Interatomic distance (Å)	Clash overlap (Å)
1:B:29:LEU:HD23	1:B:29:LEU:HA	1.81	0.44
1:C:170:TRP:CE3	1:C:182:PRO:HG2	2.52	0.44
1:D:142:LEU:HD12	1:D:142:LEU:O	2.17	0.44
1:A:271:ARG:HH12	1:A:278:ASP:CG	2.21	0.44
1:C:210:GLY:HA3	2:C:1001:UMP:N3	2.32	0.44
1:D:118:ASP:OD1	1:D:134:TYR:OH	2.26	0.44
1:A:175:ILE:HD13	1:A:178:MET:HE3	1.99	0.44
1:C:173:LYS:HG3	1:C:174:ASP:N	2.32	0.44
1:A:37:ASP:HB2	1:A:43:THR:CG2	2.47	0.44
1:A:262:LYS:HG2	1:A:292:HIS:HE1	1.81	0.44
1:B:21:TYR:HB2	1:B:53:TYR:OH	2.18	0.44
1:C:135:LYS:HD2	1:C:139:SER:CB	2.47	0.44
1:C:255:VAL:O	1:C:259:ARG:HG3	2.17	0.44
1:A:28:ILE:HD13	1:A:243:ALA:O	2.18	0.44
1:B:126:GLN:O	1:B:148:GLN:NE2	2.50	0.44
1:C:262:LYS:HD2	1:C:290:ASN:O	2.18	0.44
1:D:73:VAL:HG22	1:D:220:LEU:HD21	1.99	0.44
1:D:82:GLY:HA2	1:D:124:GLY:O	2.18	0.44
1:A:122:ILE:HD12	1:A:124:GLY:N	2.31	0.44
1:B:105:PHE:CE2	1:B:179:VAL:HG22	2.51	0.44
1:C:271:ARG:HD3	1:C:273:VAL:CG2	2.47	0.44
1:D:161:GLU:H	1:D:161:GLU:HG2	1.44	0.44
1:A:227:HIS:HD2	1:A:279:PHE:HZ	1.65	0.44
1:B:43:THR:HG22	1:B:246:TYR:CG	2.52	0.44
1:C:237:ILE:HD12	1:C:237:ILE:H	1.83	0.44
1:B:202:GLN:NE2	1:B:214:ASN:OD1	2.51	0.43
1:C:119:LEU:O	1:C:122:ILE:HG23	2.18	0.43
1:C:255:VAL:HG13	1:C:256:GLN:N	2.32	0.43
1:D:64:THR:CB	1:D:256:GLN:HE21	2.30	0.43
1:C:190:TYR:CE2	1:C:192:ALA:HB2	2.53	0.43
1:C:67:VAL:HG12	1:C:289:TYR:OH	2.18	0.43
1:C:206:ASP:N	1:C:211:VAL:HG23	2.33	0.43
1:D:64:THR:HB	1:D:256:GLN:CG	2.48	0.43
1:A:71:ALA:HA	1:A:94:ILE:HD13	1.99	0.43
1:A:293:PRO:HA	1:A:294:PRO:HD3	1.88	0.43
1:C:202:GLN:HG2	1:C:204:SER:O	2.19	0.43
1:A:211:VAL:N	1:A:212:PRO:CD	2.81	0.43
1:C:78:TRP:O	1:C:83:SER:OG	2.34	0.43
1:D:273:VAL:HG13	1:D:278:ASP:HB3	2.00	0.43
1:A:18:GLU:HB2	1:A:264:PHE:CZ	2.53	0.43
1:A:69:TRP:HD1	1:A:70:ARG:NE	2.16	0.43

Continued on next page...

Continued from previous page...

Atom-1	Atom-2	Interatomic distance (Å)	Clash overlap (Å)
1:B:221:LEU:O	1:B:225:VAL:HG23	2.18	0.43
1:C:121:PRO:HG2	1:C:177:LEU:HB2	2.01	0.43
1:A:195:GLU:HG2	1:A:232:LYS:HB2	2.01	0.43
1:D:221:LEU:O	1:D:225:VAL:HG23	2.19	0.43
1:A:180:LEU:HA	1:A:181:PRO:HD3	1.91	0.43
1:B:220:LEU:O	1:B:224:ILE:HG13	2.19	0.43
1:C:66:ARG:HB3	1:C:294:PRO:HG3	2.00	0.43
1:C:182:PRO:HB2	1:C:184:HIS:O	2.19	0.43
1:D:120:GLY:HA2	1:D:134:TYR:CE2	2.54	0.43
1:A:17:GLY:O	1:A:20:GLN:HG3	2.19	0.43
1:A:271:ARG:HD2	1:A:273:VAL:HG22	2.01	0.43
1:C:121:PRO:O	1:C:126:GLN:NE2	2.49	0.43
1:D:44:LEU:O	1:D:244:HIS:HA	2.19	0.43
1:A:20:GLN:OE1	1:A:52:ARG:N	2.48	0.43
1:B:56:ARG:HG2	1:B:233:THR:O	2.19	0.43
1:C:237:ILE:HD13	1:D:47:PHE:CD2	2.54	0.43
1:B:218:TYR:HB3	1:B:236:LEU:HD11	2.01	0.42
1:B:271:ARG:HD2	1:B:273:VAL:HG22	2.00	0.42
1:A:68:PHE:HB3	1:A:213:PHE:HE2	1.84	0.42
1:D:172:PRO:HA	1:D:175:ILE:CG1	2.49	0.42
1:C:38:ARG:HE	2:C:1001:UMP:P	2.41	0.42
1:D:195:GLU:HG2	1:D:232:LYS:HB2	2.01	0.42
1:D:203:ARG:O	1:D:241:GLY:HA3	2.20	0.42
1:D:224:ILE:O	1:D:227:HIS:HB3	2.19	0.42
1:B:254:LYS:O	1:B:257:LEU:HB2	2.20	0.42
1:D:79:PHE:CE1	1:D:123:TYR:HB2	2.54	0.42
1:D:180:LEU:HA	1:D:181:PRO:HD3	1.85	0.42
1:A:123:TYR:H	1:A:123:TYR:HD2	1.64	0.42
1:C:89:LEU:HD12	1:C:97:TRP:HB2	2.01	0.42
1:C:247:LEU:HD22	1:C:250:ILE:HD11	2.02	0.42
1:D:28:ILE:CG2	1:D:245:ILE:HD12	2.49	0.42
1:A:50:GLN:HB2	1:B:50:GLN:OE1	2.20	0.42
1:A:188:GLN:OE1	1:B:201:TYR:OH	2.30	0.42
1:C:30:ARG:HG3	1:C:31:TYR:N	2.34	0.42
1:A:184:HIS:ND1	1:A:184:HIS:N	2.67	0.42
1:B:90:ALA:HB2	1:B:98:ASP:OD1	2.20	0.42
1:C:64:THR:O	1:C:292:HIS:HB2	2.20	0.42
1:D:21:TYR:CE1	1:D:212:PRO:HG3	2.55	0.42
1:D:186:LEU:C	1:D:186:LEU:HD12	2.40	0.42
1:C:73:VAL:O	1:C:77:LEU:HG	2.19	0.42
1:C:121:PRO:CG	1:C:177:LEU:HB2	2.50	0.42

Continued on next page...

Continued from previous page...

Atom-1	Atom-2	Interatomic distance (Å)	Clash overlap (Å)
1:B:161:GLU:O	1:B:161:GLU:HG2	2.19	0.42
1:C:246:TYR:OH	2:C:1001:UMP:O3'	2.33	0.42
1:C:271:ARG:CD	1:C:273:VAL:HG22	2.49	0.42
1:D:172:PRO:HA	1:D:175:ILE:HG12	2.00	0.42
1:A:25:VAL:HG13	1:A:245:ILE:HD11	2.02	0.42
1:A:206:ASP:HB2	1:A:246:TYR:HE1	1.85	0.42
1:B:55:LEU:O	1:B:233:THR:OG1	2.38	0.42
1:B:58:GLU:HB2	1:B:264:PHE:HB2	2.01	0.42
1:D:135:LYS:HB3	1:D:135:LYS:HE2	1.82	0.42
1:A:65:LYS:CE	1:A:295:LEU:H	2.33	0.41
1:A:130:PHE:H	1:A:146:ILE:H	1.67	0.41
1:A:211:VAL:O	1:A:215:ILE:HG13	2.20	0.41
1:B:41:ILE:HG23	1:B:41:ILE:O	2.19	0.41
1:B:148:GLN:O	1:B:151:THR:HG22	2.20	0.41
2:C:1001:UMP:OP1	1:D:164:ARG:NH2	2.51	0.41
1:D:103:SER:HA	1:D:106:LEU:HB2	2.02	0.41
1:D:200:VAL:HG21	1:D:218:TYR:CD2	2.55	0.41
1:B:273:VAL:HG12	1:B:275:ASP:O	2.19	0.41
1:C:271:ARG:NH1	1:C:273:VAL:HG22	2.34	0.41
1:A:56:ARG:NH1	1:A:234:GLY:HA2	2.35	0.41
1:B:26:ASP:O	1:B:30:ARG:HG3	2.21	0.41
1:C:70:ARG:HG3	1:C:281:TRP:CE2	2.56	0.41
1:C:250:ILE:CG2	1:C:254:LYS:HE3	2.50	0.41
1:D:113:LYS:HA	1:D:113:LYS:HD3	1.91	0.41
1:D:211:VAL:CB	1:D:212:PRO:HD3	2.48	0.41
1:B:55:LEU:HD11	1:B:236:LEU:HB2	2.02	0.41
1:D:175:ILE:HD13	1:D:178:MET:HE3	2.02	0.41
1:A:68:PHE:O	1:A:72:VAL:HG23	2.21	0.41
1:A:122:ILE:HG13	1:A:122:ILE:H	1.76	0.41
1:B:254:LYS:HB2	1:B:254:LYS:HE3	1.77	0.41
1:C:128:ARG:HA	1:C:147:ASP:HA	2.03	0.41
1:A:250:ILE:CG2	1:A:254:LYS:HE3	2.49	0.41
1:B:262:LYS:HZ2	1:B:290:ASN:HB3	1.85	0.41
1:C:121:PRO:HB3	1:C:125:PHE:CD2	2.55	0.41
1:C:206:ASP:HB3	2:C:1001:UMP:O2	2.20	0.41
1:A:21:TYR:O	1:A:24:GLN:HB2	2.20	0.41
1:B:175:ILE:HG22	1:B:176:PRO:CD	2.51	0.41
1:C:280:LYS:N	1:C:283:ASP:OD2	2.47	0.41
1:B:141:TYR:O	1:B:144:GLN:HB2	2.21	0.41
1:C:50:GLN:HA	1:C:238:HIS:O	2.21	0.41
1:D:14:THR:O	1:D:15:LEU:HD23	2.20	0.41

Continued on next page...

Continued from previous page...

Atom-1	Atom-2	Interatomic distance (Å)	Clash overlap (Å)
1:A:58:GLU:HA	1:A:266:CYS:HA	2.02	0.41
1:A:97:TRP:CE3	1:A:119:LEU:HD13	2.55	0.41
1:A:195:GLU:HG2	1:A:232:LYS:CE	2.51	0.41
1:A:237:ILE:HG12	1:B:48:GLY:HA3	2.03	0.41
1:B:16:THR:O	1:B:16:THR:HG23	2.21	0.41
1:B:22:LEU:HD11	1:B:64:THR:HG21	2.01	0.41
1:B:43:THR:HG22	1:B:246:TYR:CD2	2.56	0.41
1:C:166:ILE:HD11	1:D:203:ARG:HB2	2.01	0.41
2:C:1001:UMP:OP2	1:D:163:ARG:HD3	2.20	0.41
1:D:181:PRO:C	1:D:203:ARG:HH12	2.24	0.41
1:D:209:LEU:HD23	1:D:209:LEU:HA	1.85	0.41
1:A:273:VAL:HG12	1:A:275:ASP:H	1.85	0.41
1:C:252:ALA:O	1:C:255:VAL:HG12	2.20	0.41
1:B:133:GLU:O	1:B:135:LYS:NZ	2.53	0.40
1:C:67:VAL:HG23	1:C:213:PHE:CE1	2.55	0.40
1:A:175:ILE:CD1	1:A:182:PRO:HD2	2.51	0.40
1:D:64:THR:HB	1:D:256:GLN:HG2	2.03	0.40
1:B:75:GLU:O	1:B:78:TRP:HB3	2.21	0.40
1:C:30:ARG:HG3	1:C:31:TYR:CD2	2.56	0.40
1:C:82:GLY:HA2	1:C:124:GLY:O	2.20	0.40
1:D:25:VAL:HG13	1:D:245:ILE:HD11	2.03	0.40
1:C:28:ILE:O	1:C:32:GLY:HA3	2.22	0.40
1:C:172:PRO:HA	1:C:175:ILE:CG1	2.50	0.40
1:C:276:ILE:CG1	1:C:277:ASN:H	2.34	0.40
1:D:203:ARG:HH21	2:D:1001:UMP:P	2.44	0.40

There are no symmetry-related clashes.

5.3 Torsion angles [i](#)

5.3.1 Protein backbone [i](#)

In the following table, the Percentiles column shows the percent Ramachandran outliers of the chain as a percentile score with respect to all X-ray entries followed by that with respect to entries of similar resolution.

The Analysed column shows the number of residues for which the backbone conformation was analysed, and the total number of residues.

Mol	Chain	Analysed	Favoured	Allowed	Outliers	Percentiles
1	A	258/311 (83%)	245 (95%)	13 (5%)	0	100 100

Continued on next page...

Continued from previous page...

Mol	Chain	Analysed	Favoured	Allowed	Outliers	Percentiles	
1	B	271/311 (87%)	258 (95%)	13 (5%)	0	100	100
1	C	258/311 (83%)	245 (95%)	12 (5%)	1 (0%)	34	66
1	D	276/311 (89%)	265 (96%)	11 (4%)	0	100	100
All	All	1063/1244 (86%)	1013 (95%)	49 (5%)	1 (0%)	51	82

All (1) Ramachandran outliers are listed below:

Mol	Chain	Res	Type
1	C	122	ILE

5.3.2 Protein sidechains [i](#)

In the following table, the Percentiles column shows the percent sidechain outliers of the chain as a percentile score with respect to all X-ray entries followed by that with respect to entries of similar resolution.

The Analysed column shows the number of residues for which the sidechain conformation was analysed, and the total number of residues.

Mol	Chain	Analysed	Rotameric	Outliers	Percentiles	
1	A	230/274 (84%)	219 (95%)	11 (5%)	25	58
1	B	243/274 (89%)	228 (94%)	15 (6%)	18	47
1	C	231/274 (84%)	216 (94%)	15 (6%)	17	45
1	D	246/274 (90%)	226 (92%)	20 (8%)	11	33
All	All	950/1096 (87%)	889 (94%)	61 (6%)	17	45

All (61) residues with a non-rotameric sidechain are listed below:

Mol	Chain	Res	Type
1	A	26	ASP
1	A	30	ARG
1	A	39	THR
1	A	56	ARG
1	A	84	THR
1	A	204	SER
1	A	248	ASN
1	A	249	HIS
1	A	255	VAL
1	A	280	LYS

Continued on next page...

Continued from previous page...

Mol	Chain	Res	Type
1	A	283	ASP
1	B	16	THR
1	B	33	VAL
1	B	36	ARG
1	B	37	ASP
1	B	45	SER
1	B	46	LEU
1	B	68	PHE
1	B	99	ILE
1	B	142	LEU
1	B	161	GLU
1	B	175	ILE
1	B	251	ASP
1	B	253	LEU
1	B	262	LYS
1	B	266	CYS
1	C	30	ARG
1	C	50	GLN
1	C	68	PHE
1	C	84	THR
1	C	86	SER
1	C	123	TYR
1	C	150	GLN
1	C	161	GLU
1	C	184	HIS
1	C	186	LEU
1	C	209	LEU
1	C	214	ASN
1	C	223	TYR
1	C	257	LEU
1	C	282	ASP
1	D	16	THR
1	D	41	ILE
1	D	44	LEU
1	D	68	PHE
1	D	89	LEU
1	D	103	SER
1	D	114	ARG
1	D	116	THR
1	D	129	HIS
1	D	133	GLU
1	D	143	GLN

Continued on next page...

Continued from previous page...

Mol	Chain	Res	Type
1	D	152	VAL
1	D	161	GLU
1	D	163	ARG
1	D	203	ARG
1	D	264	PHE
1	D	266	CYS
1	D	274	THR
1	D	282	ASP
1	D	290	ASN

Sometimes sidechains can be flipped to improve hydrogen bonding and reduce clashes. All (1) such sidechains are listed below:

Mol	Chain	Res	Type
1	D	256	GLN

5.3.3 RNA [i](#)

There are no RNA molecules in this entry.

5.4 Non-standard residues in protein, DNA, RNA chains [i](#)

There are no non-standard protein/DNA/RNA residues in this entry.

5.5 Carbohydrates [i](#)

There are no monosaccharides in this entry.

5.6 Ligand geometry [i](#)

4 ligands are modelled in this entry.

In the following table, the Counts columns list the number of bonds (or angles) for which Mogul statistics could be retrieved, the number of bonds (or angles) that are observed in the model and the number of bonds (or angles) that are defined in the Chemical Component Dictionary. The Link column lists molecule types, if any, to which the group is linked. The Z score for a bond length (or angle) is the number of standard deviations the observed value is removed from the expected value. A bond length (or angle) with $|Z| > 2$ is considered an outlier worth inspection. RMSZ is the root-mean-square of all Z scores of the bond lengths (or angles).

Mol	Type	Chain	Res	Link	Bond lengths			Bond angles		
					Counts	RMSZ	# Z > 2	Counts	RMSZ	# Z > 2
2	UMP	A	1001	-	21,21,21	3.59	8 (38%)	31,31,31	1.61	5 (16%)
2	UMP	B	1001	-	21,21,21	3.62	9 (42%)	31,31,31	1.61	6 (19%)
2	UMP	D	1001	-	21,21,21	3.62	9 (42%)	31,31,31	1.55	5 (16%)
2	UMP	C	1001	-	21,21,21	3.62	8 (38%)	31,31,31	1.71	5 (16%)

In the following table, the Chirals column lists the number of chiral outliers, the number of chiral centers analysed, the number of these observed in the model and the number defined in the Chemical Component Dictionary. Similar counts are reported in the Torsion and Rings columns. '-' means no outliers of that kind were identified.

Mol	Type	Chain	Res	Link	Chirals	Torsions	Rings
2	UMP	A	1001	-	-	4/10/22/22	0/2/2/2
2	UMP	B	1001	-	-	3/10/22/22	0/2/2/2
2	UMP	D	1001	-	-	7/10/22/22	0/2/2/2
2	UMP	C	1001	-	-	7/10/22/22	0/2/2/2

All (34) bond length outliers are listed below:

Mol	Chain	Res	Type	Atoms	Z	Observed(Å)	Ideal(Å)
2	D	1001	UMP	O4'-C4'	7.33	1.61	1.45
2	C	1001	UMP	O4'-C4'	7.24	1.61	1.45
2	A	1001	UMP	O4'-C4'	7.23	1.61	1.45
2	B	1001	UMP	O4'-C4'	7.14	1.60	1.45
2	D	1001	UMP	C3'-C4'	-6.85	1.34	1.53
2	B	1001	UMP	C3'-C4'	-6.85	1.34	1.53
2	A	1001	UMP	C3'-C4'	-6.78	1.34	1.53
2	C	1001	UMP	C3'-C4'	-6.73	1.34	1.53
2	B	1001	UMP	C2-N1	6.52	1.48	1.38
2	A	1001	UMP	O4'-C1'	-6.48	1.27	1.42
2	C	1001	UMP	C2-N1	6.38	1.48	1.38
2	B	1001	UMP	O4'-C1'	-6.35	1.28	1.42
2	C	1001	UMP	O4'-C1'	-6.32	1.28	1.42
2	D	1001	UMP	C2-N1	6.16	1.48	1.38
2	D	1001	UMP	O4'-C1'	-6.16	1.28	1.42
2	A	1001	UMP	C2-N1	6.15	1.48	1.38
2	D	1001	UMP	C2-N3	5.80	1.48	1.38
2	B	1001	UMP	C2-N3	5.76	1.48	1.38
2	A	1001	UMP	C2-N3	5.72	1.48	1.38
2	C	1001	UMP	C2-N3	5.67	1.48	1.38
2	D	1001	UMP	C6-C5	5.30	1.47	1.35

Continued on next page...

Continued from previous page...

Mol	Chain	Res	Type	Atoms	Z	Observed(Å)	Ideal(Å)
2	B	1001	UMP	C6-C5	5.26	1.47	1.35
2	C	1001	UMP	C6-C5	5.26	1.47	1.35
2	A	1001	UMP	C6-C5	5.12	1.46	1.35
2	C	1001	UMP	O3'-C3'	3.44	1.50	1.43
2	D	1001	UMP	O3'-C3'	3.40	1.50	1.43
2	A	1001	UMP	O3'-C3'	3.38	1.50	1.43
2	B	1001	UMP	O3'-C3'	3.20	1.50	1.43
2	B	1001	UMP	C4-N3	2.87	1.43	1.38
2	A	1001	UMP	C4-N3	2.80	1.43	1.38
2	D	1001	UMP	C4-N3	2.69	1.43	1.38
2	C	1001	UMP	C4-N3	2.68	1.43	1.38
2	D	1001	UMP	C2'-C1'	2.09	1.58	1.52
2	B	1001	UMP	C2'-C1'	2.07	1.58	1.52

All (21) bond angle outliers are listed below:

Mol	Chain	Res	Type	Atoms	Z	Observed(°)	Ideal(°)
2	C	1001	UMP	C4-N3-C2	-4.97	120.02	126.58
2	D	1001	UMP	C4-N3-C2	-4.60	120.51	126.58
2	A	1001	UMP	C4-N3-C2	-4.54	120.60	126.58
2	B	1001	UMP	C4-N3-C2	-4.34	120.86	126.58
2	C	1001	UMP	N3-C2-N1	3.78	119.91	114.89
2	D	1001	UMP	N3-C2-N1	3.66	119.74	114.89
2	B	1001	UMP	N3-C2-N1	3.52	119.56	114.89
2	C	1001	UMP	C5-C4-N3	3.50	120.07	114.84
2	A	1001	UMP	O4-C4-C5	-3.36	119.24	125.16
2	A	1001	UMP	C5-C4-N3	3.25	119.70	114.84
2	A	1001	UMP	N3-C2-N1	3.23	119.18	114.89
2	B	1001	UMP	O4-C4-C5	-3.15	119.62	125.16
2	C	1001	UMP	O4-C4-C5	-3.06	119.78	125.16
2	B	1001	UMP	C1'-N1-C2	2.98	123.51	117.64
2	D	1001	UMP	C5-C4-N3	2.96	119.28	114.84
2	B	1001	UMP	C5-C4-N3	2.87	119.13	114.84
2	C	1001	UMP	C1'-N1-C2	2.79	123.14	117.64
2	D	1001	UMP	O4-C4-C5	-2.79	120.25	125.16
2	A	1001	UMP	C1'-N1-C2	2.72	122.99	117.64
2	D	1001	UMP	C1'-N1-C2	2.37	122.31	117.64
2	B	1001	UMP	O2-C2-N3	-2.19	117.42	121.50

There are no chirality outliers.

All (21) torsion outliers are listed below:

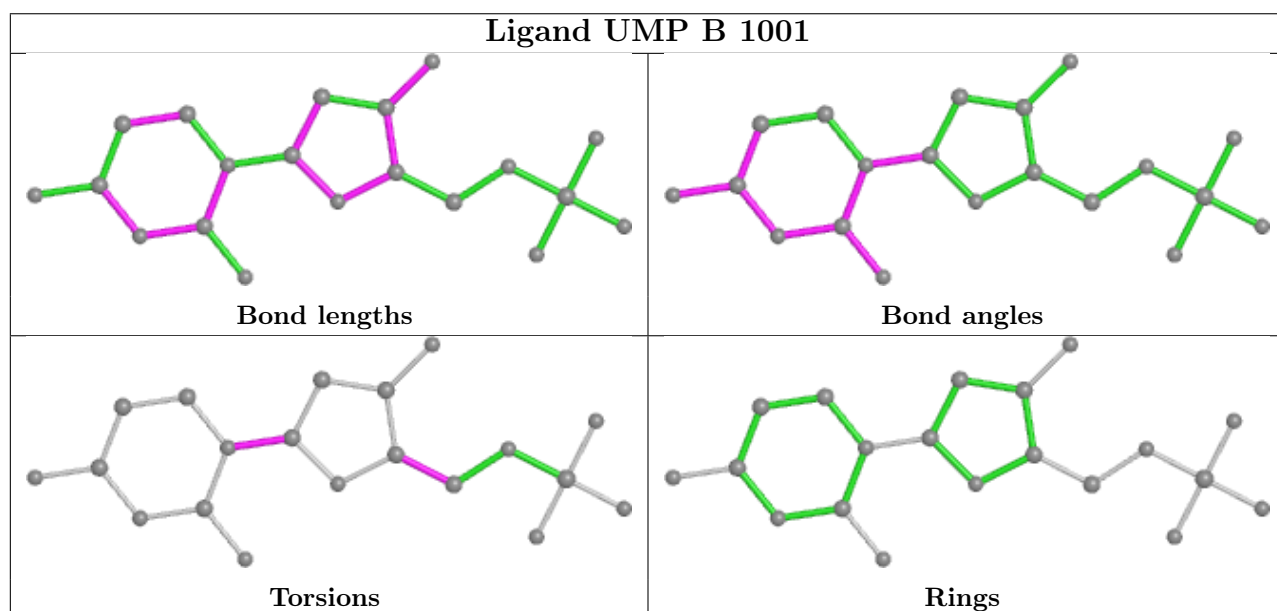
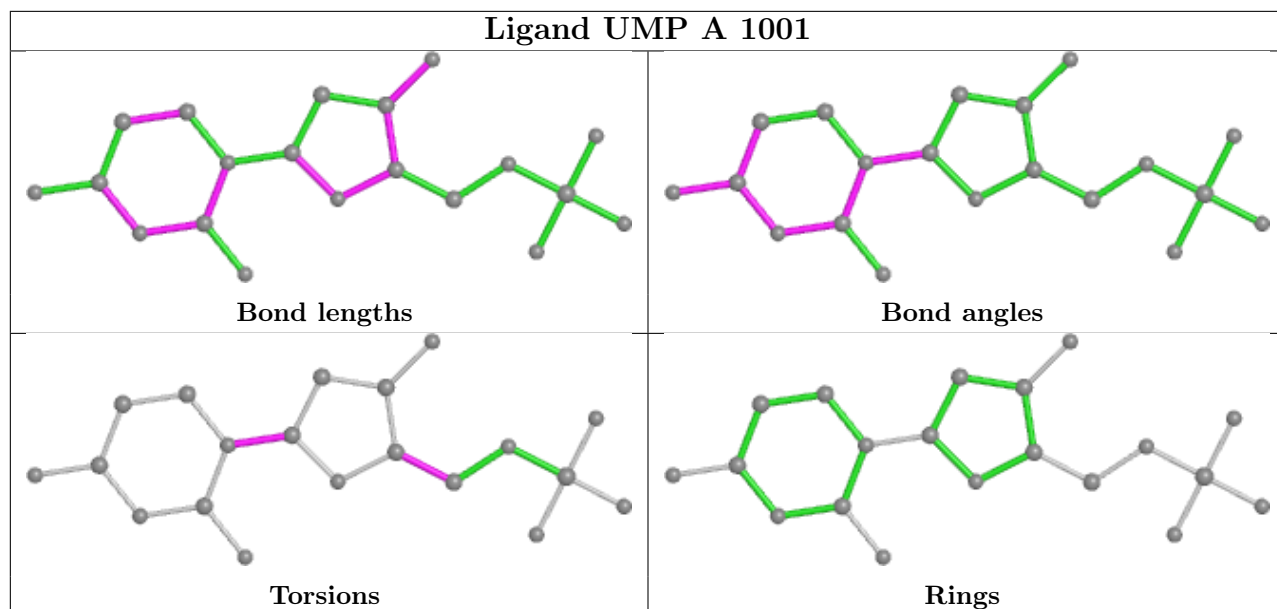
Mol	Chain	Res	Type	Atoms
2	A	1001	UMP	C3'-C4'-C5'-O5'
2	C	1001	UMP	C5'-O5'-P-OP2
2	C	1001	UMP	C5'-O5'-P-OP3
2	D	1001	UMP	C3'-C4'-C5'-O5'
2	D	1001	UMP	C5'-O5'-P-OP1
2	D	1001	UMP	C5'-O5'-P-OP2
2	D	1001	UMP	C5'-O5'-P-OP3
2	A	1001	UMP	O4'-C4'-C5'-O5'
2	C	1001	UMP	C3'-C4'-C5'-O5'
2	C	1001	UMP	O4'-C4'-C5'-O5'
2	A	1001	UMP	C2'-C1'-N1-C2
2	B	1001	UMP	C2'-C1'-N1-C2
2	C	1001	UMP	C2'-C1'-N1-C2
2	C	1001	UMP	C2'-C1'-N1-C6
2	D	1001	UMP	C2'-C1'-N1-C2
2	A	1001	UMP	C2'-C1'-N1-C6
2	B	1001	UMP	C2'-C1'-N1-C6
2	D	1001	UMP	C2'-C1'-N1-C6
2	D	1001	UMP	O4'-C4'-C5'-O5'
2	C	1001	UMP	C5'-O5'-P-OP1
2	B	1001	UMP	O4'-C4'-C5'-O5'

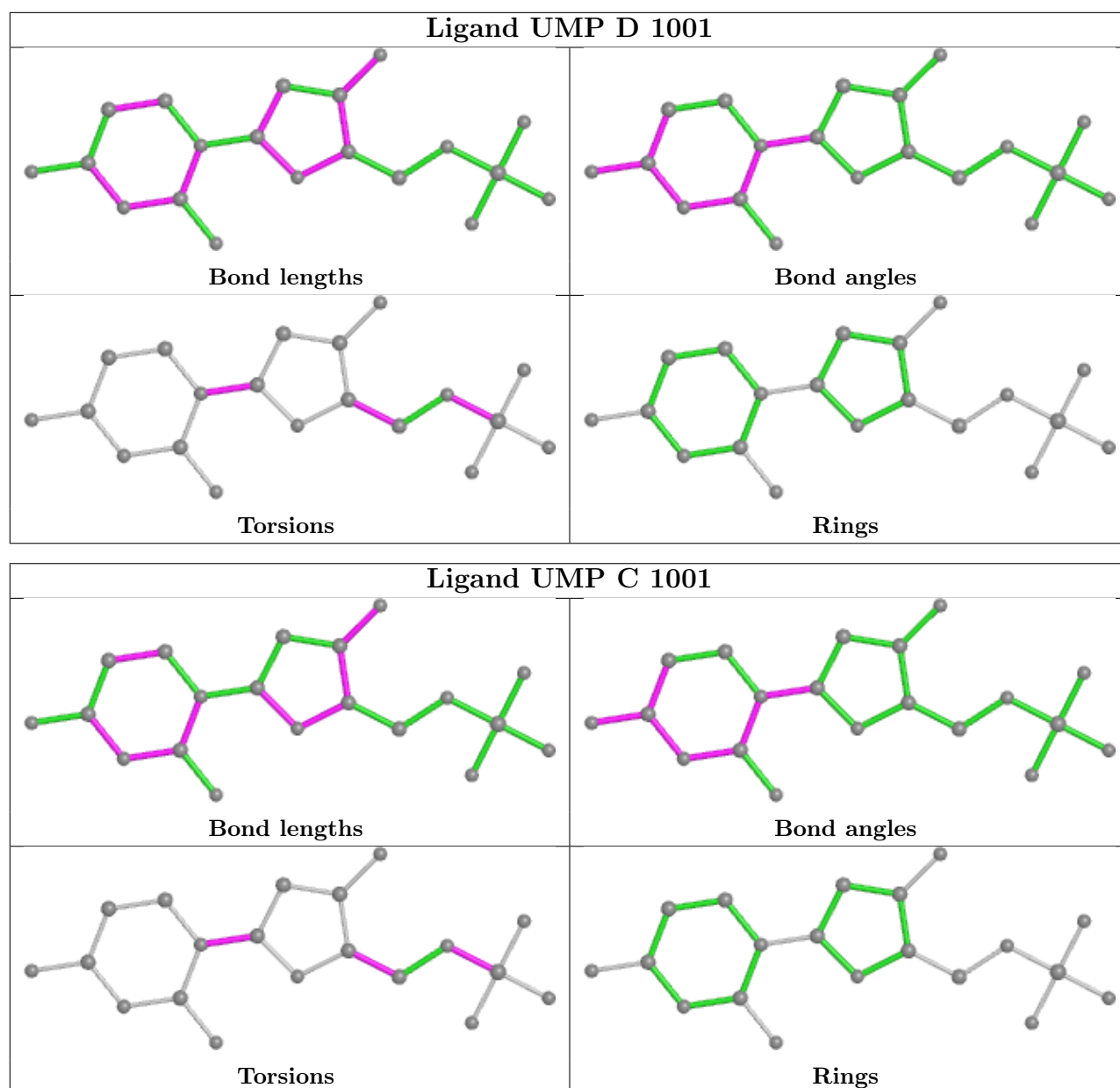
There are no ring outliers.

4 monomers are involved in 29 short contacts:

Mol	Chain	Res	Type	Clashes	Symm-Clashes
2	A	1001	UMP	7	0
2	B	1001	UMP	5	0
2	D	1001	UMP	7	0
2	C	1001	UMP	10	0

The following is a two-dimensional graphical depiction of Mogul quality analysis of bond lengths, bond angles, torsion angles, and ring geometry for all instances of the Ligand of Interest. In addition, ligands with molecular weight > 250 and outliers as shown on the validation Tables will also be included. For torsion angles, if less than 5% of the Mogul distribution of torsion angles is within 10 degrees of the torsion angle in question, then that torsion angle is considered an outlier. Any bond that is central to one or more torsion angles identified as an outlier by Mogul will be highlighted in the graph. For rings, the root-mean-square deviation (RMSD) between the ring in question and similar rings identified by Mogul is calculated over all ring torsion angles. If the average RMSD is greater than 60 degrees and the minimal RMSD between the ring in question and any Mogul-identified rings is also greater than 60 degrees, then that ring is considered an outlier. The outliers are highlighted in purple. The color gray indicates Mogul did not find sufficient equivalents in the CSD to analyse the geometry.





5.7 Other polymers [\(i\)](#)

There are no such residues in this entry.

5.8 Polymer linkage issues [\(i\)](#)

There are no chain breaks in this entry.

6 Fit of model and data [i](#)

6.1 Protein, DNA and RNA chains [i](#)

Unable to reproduce the depositors R factor - this section is therefore empty.

6.2 Non-standard residues in protein, DNA, RNA chains [i](#)

Unable to reproduce the depositors R factor - this section is therefore empty.

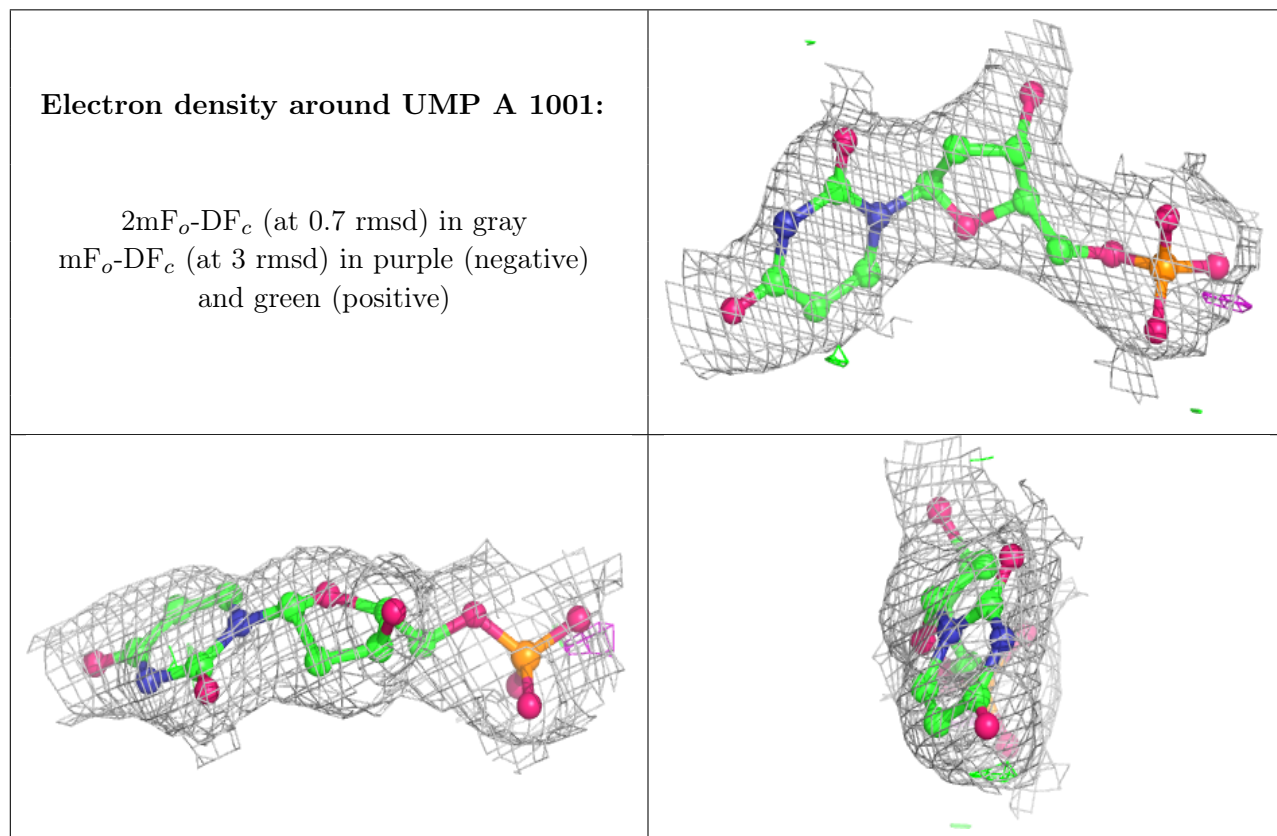
6.3 Carbohydrates [i](#)

Unable to reproduce the depositors R factor - this section is therefore empty.

6.4 Ligands [i](#)

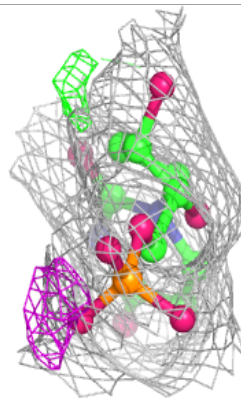
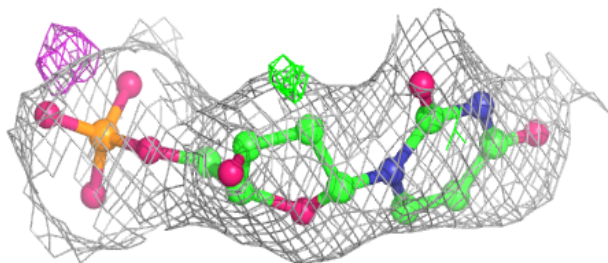
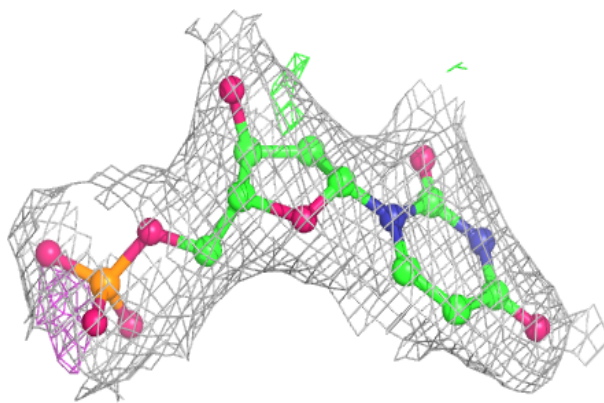
Unable to reproduce the depositors R factor - this section is therefore empty.

The following is a graphical depiction of the model fit to experimental electron density of all instances of the Ligand of Interest. In addition, ligands with molecular weight > 250 and outliers as shown on the geometry validation Tables will also be included. Each fit is shown from different orientation to approximate a three-dimensional view.

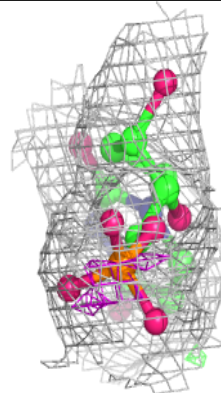
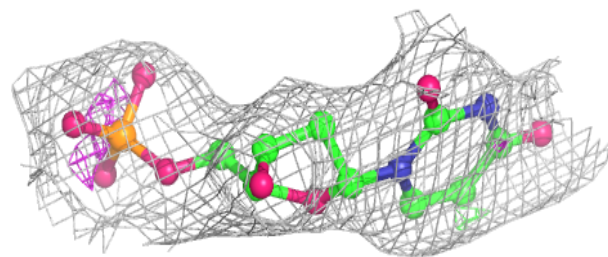
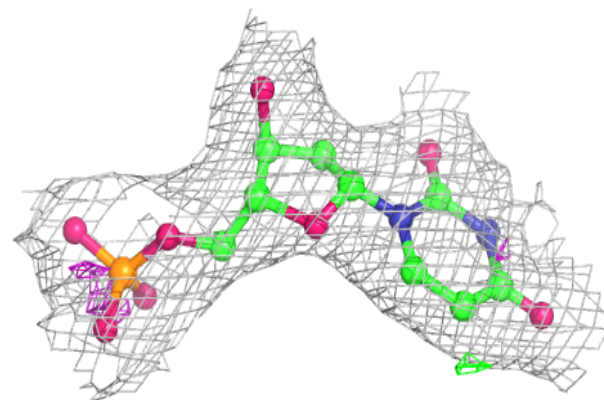


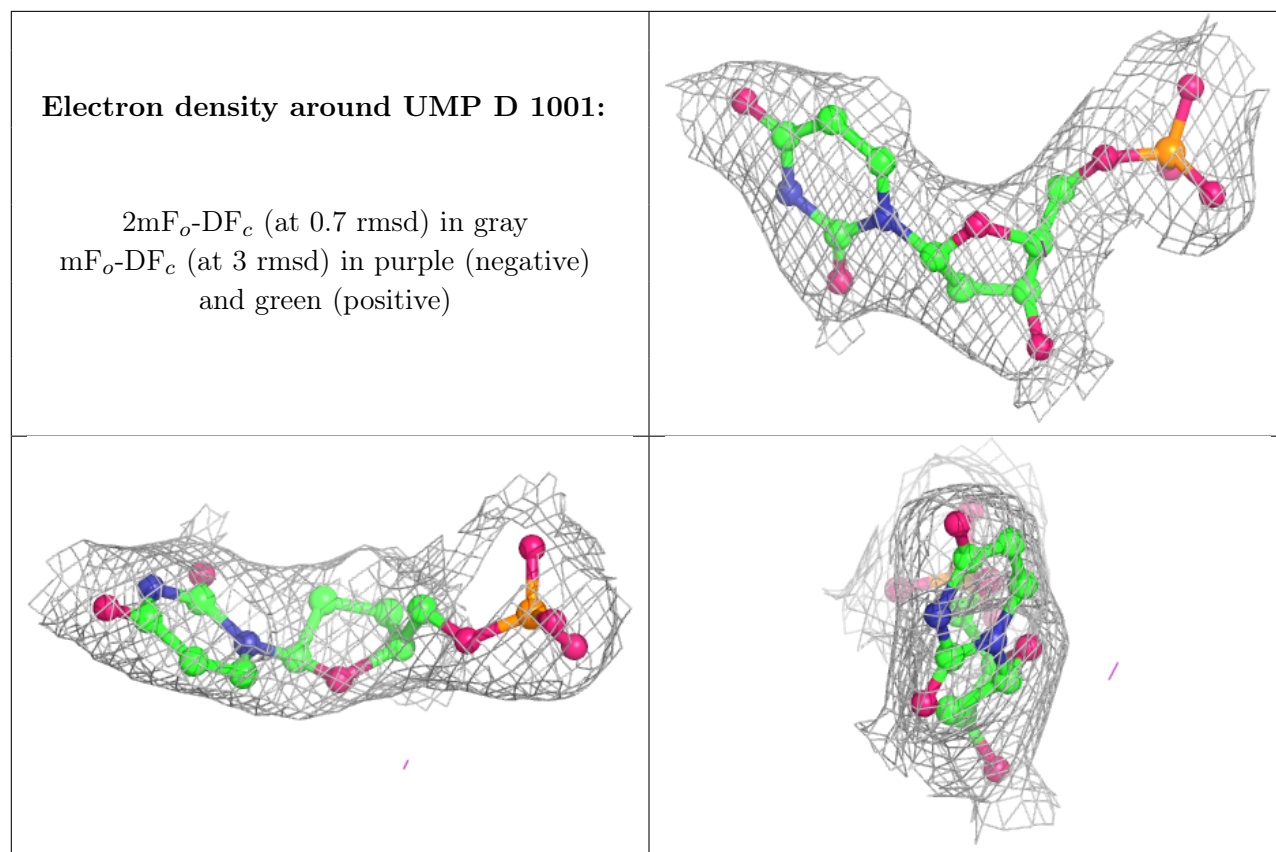
Electron density around UMP B 1001:

$2mF_o-DF_c$ (at 0.7 rmsd) in gray
 mF_o-DF_c (at 3 rmsd) in purple (negative)
and green (positive)

**Electron density around UMP C 1001:**

$2mF_o-DF_c$ (at 0.7 rmsd) in gray
 mF_o-DF_c (at 3 rmsd) in purple (negative)
and green (positive)





6.5 Other polymers [i](#)

Unable to reproduce the depositor's R factor - this section is therefore empty.