



Full wwPDB X-ray Structure Validation Report ⓘ

Apr 28, 2024 – 03:17 pm BST

PDB ID : 5FVR
Title : Structure of rat neuronal nitric oxide synthase heme domain in complex with 4-METHYL-6-(2-(5-(1-METHYLPIPERIDIN-4-YL)PYRIDIN-3-YL) ETHYL)PYRIDIN-2-AMINE
Authors : Li, H.; Poulos, T.L.
Deposited on : 2016-02-10
Resolution : 1.84 Å(reported)

This is a Full wwPDB X-ray Structure Validation Report for a publicly released PDB entry.

We welcome your comments at validation@mail.wwpdb.org

A user guide is available at

<https://www.wwpdb.org/validation/2017/XrayValidationReportHelp>

with specific help available everywhere you see the ⓘ symbol.

The types of validation reports are described at

<http://www.wwpdb.org/validation/2017/FAQs#types>.

The following versions of software and data (see [references ⓘ](#)) were used in the production of this report:

MolProbity : 4.02b-467
Mogul : 1.8.4, CSD as541be (2020)
Xtriage (Phenix) : 1.13
EDS : 2.36.2
buster-report : 1.1.7 (2018)
Percentile statistics : 20191225.v01 (using entries in the PDB archive December 25th 2019)
Refmac : 5.8.0158
CCP4 : 7.0.044 (Gargrove)
Ideal geometry (proteins) : Engh & Huber (2001)
Ideal geometry (DNA, RNA) : Parkinson et al. (1996)
Validation Pipeline (wwPDB-VP) : 2.36.2

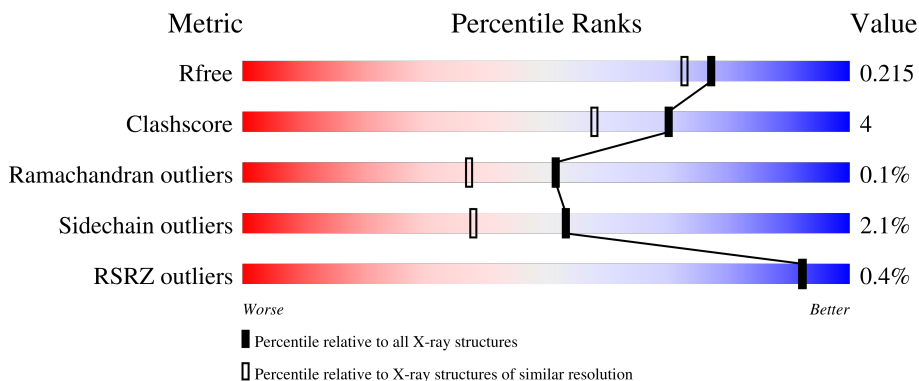
1 Overall quality at a glance

The following experimental techniques were used to determine the structure:

X-RAY DIFFRACTION

The reported resolution of this entry is 1.84 Å.

Percentile scores (ranging between 0-100) for global validation metrics of the entry are shown in the following graphic. The table shows the number of entries on which the scores are based.



Metric	Whole archive (#Entries)	Similar resolution (#Entries, resolution range(Å))
R_{free}	130704	4003 (1.86-1.82)
Clashscore	141614	4233 (1.86-1.82)
Ramachandran outliers	138981	4185 (1.86-1.82)
Sidechain outliers	138945	4186 (1.86-1.82)
RSRZ outliers	127900	3957 (1.86-1.82)

The table below summarises the geometric issues observed across the polymeric chains and their fit to the electron density. The red, orange, yellow and green segments of the lower bar indicate the fraction of residues that contain outliers for ≥ 3 , 2, 1 and 0 types of geometric quality criteria respectively. A grey segment represents the fraction of residues that are not modelled. The numeric value for each fraction is indicated below the corresponding segment, with a dot representing fractions $\leq 5\%$. The upper red bar (where present) indicates the fraction of residues that have poor fit to the electron density. The numeric value is given above the bar.

Mol	Chain	Length	Quality of chain
1	A	422	87% 9% .
1	B	422	90% 7% .

2 Entry composition [i](#)

There are 7 unique types of molecules in this entry. The entry contains 7459 atoms, of which 0 are hydrogens and 0 are deuteriums.

In the tables below, the ZeroOcc column contains the number of atoms modelled with zero occupancy, the AltConf column contains the number of residues with at least one atom in alternate conformation and the Trace column contains the number of residues modelled with at most 2 atoms.

- Molecule 1 is a protein called NITRIC OXIDE SYNTHASE, BRAIN.

Mol	Chain	Residues	Atoms					ZeroOcc	AltConf	Trace
			Total	C	N	O	S			
1	A	408	Total	C	N	O	S	0	3	1
			3330	2131	568	609	22			
1	B	411	Total	C	N	O	S	0	4	0
			3363	2151	575	615	22			

- Molecule 2 is PROTOPORPHYRIN IX CONTAINING FE (three-letter code: HEM) (formula: $C_{34}H_{32}FeN_4O_4$).



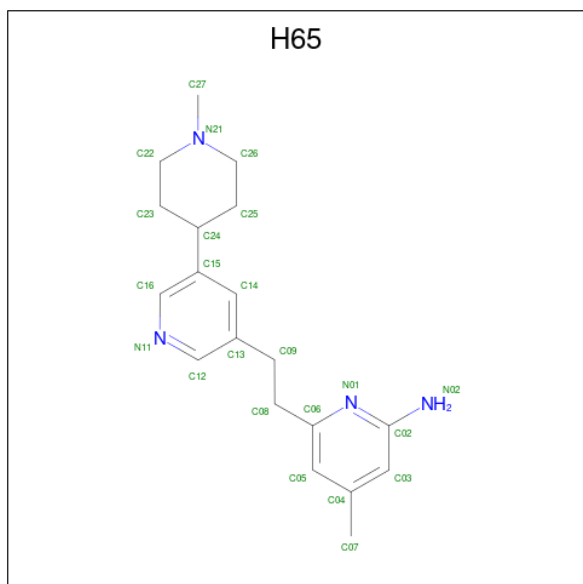
Mol	Chain	Residues	Atoms					ZeroOcc	AltConf
			Total	C	Fe	N	O		
2	A	1	Total	C	Fe	N	O	0	0
			43	34	1	4	4		
2	B	1	Total	C	Fe	N	O	0	0
			43	34	1	4	4		

- Molecule 3 is 5,6,7,8-TETRAHYDROBIOPTERIN (three-letter code: H4B) (formula: $C_9H_{15}N_5O_3$).



Mol	Chain	Residues	Atoms				ZeroOcc	AltConf
3	A	1	Total	C	N	O	0	0
			17	9	5	3		
3	B	1	Total	C	N	O	0	0
			17	9	5	3		

- Molecule 4 is 4-methyl-6-(2-(5-(1-methylpiperidin-4-yl)pyridin-3-yl)ethyl)pyridin-2-amine (three-letter code: H65) (formula: C₁₉H₂₆N₄).



Mol	Chain	Residues	Atoms			ZeroOcc	AltConf
4	A	1	Total	C	N	0	0
			23	19	4		

Continued on next page...

Continued from previous page...

Mol	Chain	Residues	Atoms			ZeroOcc	AltConf
4	B	1	Total	C	N	0	0
			23	19	4		

- Molecule 5 is ACETATE ION (three-letter code: ACT) (formula: C₂H₃O₂).



Mol	Chain	Residues	Atoms			ZeroOcc	AltConf
5	A	1	Total	C	O	0	0
			4	2	2		
5	B	1	Total	C	O	0	0
			4	2	2		

- Molecule 6 is ZINC ION (three-letter code: ZN) (formula: Zn).

Mol	Chain	Residues	Atoms		ZeroOcc	AltConf
6	A	1	Total	Zn	0	0
			1	1		


- Molecule 7 is water.

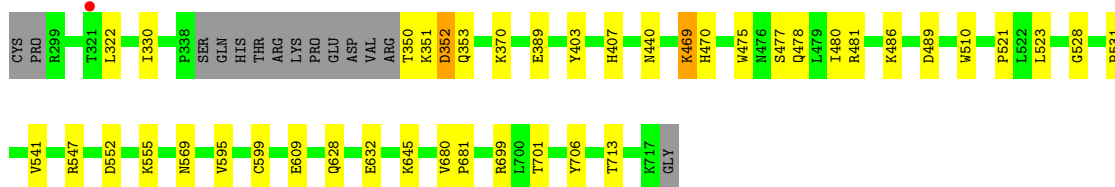
Mol	Chain	Residues	Atoms		ZeroOcc	AltConf
7	A	278	Total	O	0	0
			278	278		
7	B	313	Total	O	0	0
			313	313		

3 Residue-property plots [i](#)


These plots are drawn for all protein, RNA, DNA and oligosaccharide chains in the entry. The first graphic for a chain summarises the proportions of the various outlier classes displayed in the second graphic. The second graphic shows the sequence view annotated by issues in geometry and electron density. Residues are color-coded according to the number of geometric quality criteria for which they contain at least one outlier: green = 0, yellow = 1, orange = 2 and red = 3 or more. A red dot above a residue indicates a poor fit to the electron density ($RSRZ > 2$). Stretches of 2 or more consecutive residues without any outlier are shown as a green connector. Residues present in the sample, but not in the model, are shown in grey.

- Molecule 1: NITRIC OXIDE SYNTHASE, BRAIN

Chain A:  87% 9%



- Molecule 1: NITRIC OXIDE SYNTHASE, BRAIN

Chain B:  90% 7%



4 Data and refinement statistics i

Property	Value	Source
Space group	P 21 21 21	Depositor
Cell constants a, b, c, α , β , γ	52.09Å 110.58Å 163.91Å 90.00° 90.00° 90.00°	Depositor
Resolution (Å)	55.29 – 1.84 65.84 – 0.66	Depositor EDS
% Data completeness (in resolution range)	99.5 (55.29-1.84) 4.8 (65.84-0.66)	Depositor EDS
R_{merge}	0.10	Depositor
R_{sym}	(Not available)	Depositor
$\langle I/\sigma(I) \rangle$	-	Xtrriage
Refinement program	PHENIX (PHENIX.REFINE)	Depositor
R, R_{free}	0.182 , 0.218 0.178 , 0.215	Depositor DCC
R_{free} test set	4066 reflections (4.94%)	wwPDB-VP
Wilson B-factor (Å ²)	(Not available)	Xtrriage
Anisotropy	(Not available)	Xtrriage
Bulk solvent k_{sol} (e/Å ³), B_{sol} (Å ²)	0.37 , 51.7	EDS
L-test for twinning ¹	$\langle L \rangle =$ (Not available), $\langle L^2 \rangle =$ (Not available)	Xtrriage
Estimated twinning fraction	No twinning to report.	Xtrriage
F_o, F_c correlation	0.96	EDS
Total number of atoms	7459	wwPDB-VP
Average B, all atoms (Å ²)	36.0	wwPDB-VP

Xtrriage's analysis on translational NCS is as follows: *(Not available)*

¹Theoretical values of $\langle |L| \rangle$, $\langle L^2 \rangle$ for acentric reflections are 0.5, 0.333 respectively for untwinned datasets, and 0.375, 0.2 for perfectly twinned datasets.

5 Model quality [i](#)

5.1 Standard geometry [i](#)

Bond lengths and bond angles in the following residue types are not validated in this section: HEM, H65, ACT, ZN, H4B

The Z score for a bond length (or angle) is the number of standard deviations the observed value is removed from the expected value. A bond length (or angle) with $|Z| > 5$ is considered an outlier worth inspection. RMSZ is the root-mean-square of all Z scores of the bond lengths (or angles).

Mol	Chain	Bond lengths		Bond angles	
		RMSZ	# Z >5	RMSZ	# Z >5
1	A	0.38	0/3429	0.51	0/4654
1	B	0.38	0/3465	0.51	0/4697
All	All	0.38	0/6894	0.51	0/9351

There are no bond length outliers.

There are no bond angle outliers.

There are no chirality outliers.

There are no planarity outliers.

5.2 Too-close contacts [i](#)

In the following table, the Non-H and H(model) columns list the number of non-hydrogen atoms and hydrogen atoms in the chain respectively. The H(added) column lists the number of hydrogen atoms added and optimized by MolProbity. The Clashes column lists the number of clashes within the asymmetric unit, whereas Symm-Clashes lists symmetry-related clashes.

Mol	Chain	Non-H	H(model)	H(added)	Clashes	Symm-Clashes
1	A	3330	0	3239	28	0
1	B	3363	0	3279	21	0
2	A	43	0	30	3	0
2	B	43	0	30	2	0
3	A	17	0	15	0	0
3	B	17	0	15	0	0
4	A	23	0	0	0	0
4	B	23	0	0	1	0
5	A	4	0	3	0	0
5	B	4	0	3	1	0
6	A	1	0	0	0	0

Continued on next page...

Continued from previous page...

Mol	Chain	Non-H	H(model)	H(added)	Clashes	Symm-Clashes
7	A	278	0	0	4	1
7	B	313	0	0	4	1
All	All	7459	0	6614	49	1

The all-atom clashscore is defined as the number of clashes found per 1000 atoms (including hydrogen atoms). The all-atom clashscore for this structure is 4.

All (49) close contacts within the same asymmetric unit are listed below, sorted by their clash magnitude.

Atom-1	Atom-2	Interatomic distance (Å)	Clash overlap (Å)
1:B:349:ARG:HG2	1:B:353:GLN:HG3	1.71	0.72
1:B:668[B]:CYS:SG	7:B:2287:HOH:O	2.48	0.70
1:A:523:LEU:HD22	1:A:531:PRO:HB2	1.75	0.67
1:B:478:GLN:OE1	1:B:481:ARG:HD2	1.95	0.67
1:A:552:ASP:OD1	1:A:555:LYS:NZ	2.29	0.66
1:A:352:ASP:OD1	1:A:352:ASP:N	2.31	0.63
2:A:750:HEM:HBB2	2:A:750:HEM:HHC	1.81	0.63
2:A:750:HEM:HMC2	2:A:750:HEM:HBC2	1.80	0.62
1:A:480:ILE:HD13	1:A:541:VAL:HG13	1.83	0.60
2:B:750:HEM:HHC	2:B:750:HEM:HBB2	1.84	0.60
1:A:478:GLN:OE1	1:A:481:ARG:HD2	2.04	0.57
1:A:632:GLU:OE2	1:B:628:GLN:NE2	2.40	0.55
1:B:667:ARG:NH2	7:B:2281:HOH:O	2.43	0.51
2:B:750:HEM:HMB3	5:B:860:ACT:H2	1.93	0.51
1:B:614:MET:HE2	1:B:616:LEU:HD21	1.94	0.49
1:A:469:LYS:HE3	1:A:469:LYS:HA	1.94	0.49
1:A:330:ILE:HD11	1:B:696:LEU:HB3	1.94	0.48
1:A:370:LYS:HB2	1:A:370:LYS:HE3	1.70	0.47
1:A:628:GLN:HG3	1:B:631:VAL:HG11	1.97	0.47
1:A:330:ILE:HD11	1:B:696:LEU:HD22	1.97	0.47
1:A:477:SER:HA	1:A:569:ASN:HB3	1.97	0.46
1:A:706:TYR:OH	2:A:750:HEM:O2D	2.20	0.46
1:B:355:PHE:CE1	1:B:385:ASN:HB2	2.50	0.46
1:A:486:LYS:NZ	7:A:2151:HOH:O	2.42	0.46
1:B:403:TYR:CE1	1:B:407:HIS:CE1	3.04	0.45
1:A:350:THR:N	1:A:353:GLN:OE1	2.50	0.45
1:B:322:LEU:HD12	1:B:699:ARG:HB3	1.98	0.45
1:B:478:GLN:NE2	7:B:2166:HOH:O	2.47	0.45
1:A:403:TYR:CE2	1:A:407:HIS:CE1	3.05	0.45
1:A:322:LEU:HB2	1:A:699:ARG:HB2	1.99	0.44
1:B:510:TRP:CE2	1:B:521:PRO:HD3	2.52	0.44

Continued on next page...

Continued from previous page...

Atom-1	Atom-2	Interatomic distance (Å)	Clash overlap (Å)
1:B:516:ARG:HD2	7:B:2184:HOH:O	2.17	0.44
1:A:351:LYS:NZ	1:A:389:GLU:O	2.29	0.44
1:A:475:TRP:HB2	1:A:523:LEU:HB3	1.99	0.44
1:A:470:HIS:HA	1:A:528:GLY:HA3	2.00	0.43
1:B:477:SER:HA	1:B:569:ASN:HB3	2.00	0.43
1:A:478:GLN:HB2	1:A:481:ARG:HG3	2.01	0.43
1:A:609:GLU:HG3	7:A:2217:HOH:O	2.17	0.43
1:A:701[A]:THR:HG23	7:A:2031:HOH:O	2.19	0.42
1:B:353:GLN:H	1:B:353:GLN:HG2	1.58	0.42
1:A:680:VAL:HA	1:A:681:PRO:HD3	1.90	0.42
1:A:510:TRP:CE2	1:A:521:PRO:HD3	2.55	0.42
1:B:478:GLN:HG2	4:B:800:H65:N11	2.34	0.41
1:A:440:ASN:ND2	7:A:2098:HOH:O	2.38	0.41
1:B:353:GLN:HE21	1:B:353:GLN:HB3	1.68	0.41
1:A:595:VAL:O	1:A:599:CYS:HB2	2.20	0.41
1:B:595:VAL:O	1:B:599:CYS:HB2	2.21	0.41
1:A:510:TRP:CD1	1:A:521:PRO:HG3	2.55	0.41
1:B:699:ARG:NH2	1:B:705:GLU:OE1	2.54	0.41

All (1) symmetry-related close contacts are listed below. The label for Atom-2 includes the symmetry operator and encoded unit-cell translations to be applied.

Atom-1	Atom-2	Interatomic distance (Å)	Clash overlap (Å)
7:A:2121:HOH:O	7:B:2140:HOH:O[2_554]	2.19	0.01

5.3 Torsion angles [i](#)

5.3.1 Protein backbone [i](#)

In the following table, the Percentiles column shows the percent Ramachandran outliers of the chain as a percentile score with respect to all X-ray entries followed by that with respect to entries of similar resolution.

The Analysed column shows the number of residues for which the backbone conformation was analysed, and the total number of residues.

Mol	Chain	Analysed	Favoured	Allowed	Outliers	Percentiles
1	A	407/422 (96%)	396 (97%)	10 (2%)	1 (0%)	47 33
1	B	411/422 (97%)	406 (99%)	5 (1%)	0	100 100

Continued on next page...

Continued from previous page...

Mol	Chain	Analysed	Favoured	Allowed	Outliers	Percentiles
All	All	818/844 (97%)	802 (98%)	15 (2%)	1 (0%)	51 37

All (1) Ramachandran outliers are listed below:

Mol	Chain	Res	Type
1	A	489	ASP

5.3.2 Protein sidechains [i](#)

In the following table, the Percentiles column shows the percent sidechain outliers of the chain as a percentile score with respect to all X-ray entries followed by that with respect to entries of similar resolution.

The Analysed column shows the number of residues for which the sidechain conformation was analysed, and the total number of residues.

Mol	Chain	Analysed	Rotameric	Outliers	Percentiles
1	A	366/377 (97%)	361 (99%)	5 (1%)	67 55
1	B	370/377 (98%)	360 (97%)	10 (3%)	44 28
All	All	736/754 (98%)	721 (98%)	15 (2%)	53 40

All (15) residues with a non-rotameric sidechain are listed below:

Mol	Chain	Res	Type
1	A	352	ASP
1	A	469	LYS
1	A	547	ARG
1	A	645	LYS
1	A	713	THR
1	B	351	LYS
1	B	353	GLN
1	B	382	GLU
1	B	392	SER
1	B	423	LYS
1	B	516	ARG
1	B	540	LEU
1	B	547	ARG
1	B	619	ARG
1	B	686	SER

Sometimes sidechains can be flipped to improve hydrogen bonding and reduce clashes. All (2) such

sidechains are listed below:

Mol	Chain	Res	Type
1	A	353	GLN
1	A	425	GLN

5.3.3 RNA [i](#)

There are no RNA molecules in this entry.

5.4 Non-standard residues in protein, DNA, RNA chains [i](#)

There are no non-standard protein/DNA/RNA residues in this entry.

5.5 Carbohydrates [i](#)

There are no monosaccharides in this entry.

5.6 Ligand geometry [i](#)

Of 9 ligands modelled in this entry, 1 is monoatomic - leaving 8 for Mogul analysis.

In the following table, the Counts columns list the number of bonds (or angles) for which Mogul statistics could be retrieved, the number of bonds (or angles) that are observed in the model and the number of bonds (or angles) that are defined in the Chemical Component Dictionary. The Link column lists molecule types, if any, to which the group is linked. The Z score for a bond length (or angle) is the number of standard deviations the observed value is removed from the expected value. A bond length (or angle) with $|Z| > 2$ is considered an outlier worth inspection. RMSZ is the root-mean-square of all Z scores of the bond lengths (or angles).

Mol	Type	Chain	Res	Link	Bond lengths			Bond angles		
					Counts	RMSZ	# Z > 2	Counts	RMSZ	# Z > 2
4	H65	B	800	-	25,25,25	0.58	0	34,34,34	2.05	7 (20%)
5	ACT	A	860	-	3,3,3	0.78	0	3,3,3	0.68	0
5	ACT	B	860	-	3,3,3	0.74	0	3,3,3	0.84	0
4	H65	A	800	-	25,25,25	0.54	0	34,34,34	2.34	11 (32%)
2	HEM	B	750	1	41,50,50	1.95	8 (19%)	45,82,82	1.85	6 (13%)
2	HEM	A	750	1	41,50,50	1.97	8 (19%)	45,82,82	1.94	9 (20%)
3	H4B	B	760	-	16,18,18	0.96	0	11,26,26	2.40	4 (36%)
3	H4B	A	760	-	16,18,18	0.85	0	11,26,26	2.58	6 (54%)

In the following table, the Chirals column lists the number of chiral outliers, the number of chiral

centers analysed, the number of these observed in the model and the number defined in the Chemical Component Dictionary. Similar counts are reported in the Torsion and Rings columns. '2' means no outliers of that kind were identified.

Mol	Type	Chain	Res	Link	Chirals	Torsions	Rings
4	H65	B	800	-	-	2/9/19/19	0/3/3/3
4	H65	A	800	-	-	2/9/19/19	0/3/3/3
2	HEM	B	750	1	-	1/12/54/54	-
2	HEM	A	750	1	-	1/12/54/54	-
3	H4B	B	760	-	-	0/8/17/17	0/2/2/2
3	H4B	A	760	-	-	0/8/17/17	0/2/2/2

All (16) bond length outliers are listed below:

Mol	Chain	Res	Type	Atoms	Z	Observed(Å)	Ideal(Å)
2	A	750	HEM	C3D-C2D	7.83	1.53	1.36
2	B	750	HEM	C3D-C2D	7.61	1.52	1.36
2	A	750	HEM	C3C-CAC	3.98	1.56	1.47
2	B	750	HEM	C3C-C2C	-3.96	1.34	1.40
2	B	750	HEM	C3C-CAC	3.92	1.55	1.47
2	A	750	HEM	C3C-C2C	-3.65	1.35	1.40
2	A	750	HEM	FE-NB	3.03	2.11	1.96
2	A	750	HEM	CAB-C3B	3.03	1.55	1.47
2	B	750	HEM	CAB-C3B	2.90	1.55	1.47
2	A	750	HEM	FE-ND	2.53	2.09	1.96
2	B	750	HEM	FE-ND	2.46	2.09	1.96
2	B	750	HEM	FE-NB	2.45	2.09	1.96
2	B	750	HEM	CMD-C2D	2.31	1.55	1.50
2	A	750	HEM	CMD-C2D	2.18	1.55	1.50
2	B	750	HEM	CMB-C2B	2.16	1.55	1.50
2	A	750	HEM	CMB-C2B	2.11	1.55	1.50

All (43) bond angle outliers are listed below:

Mol	Chain	Res	Type	Atoms	Z	Observed(°)	Ideal(°)
4	A	800	H65	C09-C08-C06	-7.51	96.15	112.99
4	B	800	H65	C09-C08-C06	-6.55	98.30	112.99
2	B	750	HEM	CBA-CAA-C2A	-6.17	102.09	112.62
2	A	750	HEM	CBA-CAA-C2A	-5.98	102.42	112.62
2	A	750	HEM	C4D-ND-C1D	5.87	111.14	105.07
4	A	800	H65	C02-N01-C06	5.77	122.47	118.10
3	B	760	H4B	C8A-C4A-C4	5.35	119.32	114.57
2	B	750	HEM	C4D-ND-C1D	5.14	110.39	105.07
4	B	800	H65	C02-N01-C06	4.64	121.61	118.10

Continued on next page...

Continued from previous page...

Mol	Chain	Res	Type	Atoms	Z	Observed(°)	Ideal(°)
4	B	800	H65	C14-C15-C16	4.58	120.50	117.44
3	A	760	H4B	C8A-C4A-C4	4.57	118.63	114.57
4	A	800	H65	C14-C15-C16	4.53	120.46	117.44
2	A	750	HEM	CBD-CAD-C3D	-4.20	100.97	112.63
2	B	750	HEM	C4B-CHC-C1C	4.01	127.86	122.56
2	B	750	HEM	CBD-CAD-C3D	-3.68	102.41	112.63
3	A	760	H4B	C4-C4A-N5	3.39	121.97	119.12
3	A	760	H4B	N1-C2-N3	-3.27	120.29	125.42
4	B	800	H65	C05-C06-N01	-3.20	119.51	122.90
4	A	800	H65	C05-C06-N01	-3.14	119.57	122.90
2	A	750	HEM	C4B-CHC-C1C	3.11	126.66	122.56
3	A	760	H4B	C2-N1-C8A	3.10	121.48	114.54
3	B	760	H4B	N1-C2-N3	-2.93	120.83	125.42
2	A	750	HEM	CMD-C2D-C1D	2.84	129.37	125.04
4	B	800	H65	C08-C06-N01	2.77	120.08	115.95
3	B	760	H4B	C2-N1-C8A	2.73	120.65	114.54
3	B	760	H4B	C2-N3-C4	2.70	120.22	115.93
4	A	800	H65	C26-C25-C24	-2.64	107.91	111.04
4	A	800	H65	C08-C06-N01	2.63	119.87	115.95
3	A	760	H4B	C2-N3-C4	2.62	120.09	115.93
3	A	760	H4B	N2-C2-N3	2.59	121.28	117.25
4	A	800	H65	C09-C13-C12	-2.54	117.74	121.83
4	A	800	H65	C08-C09-C13	2.47	121.95	113.28
2	A	750	HEM	CHC-C4B-C3B	2.36	128.18	124.57
4	A	800	H65	C15-C16-N11	-2.35	120.45	124.14
2	A	750	HEM	CMC-C2C-C3C	2.34	129.06	124.68
4	B	800	H65	C15-C16-N11	-2.28	120.56	124.14
2	B	750	HEM	CMD-C2D-C1D	2.24	128.44	125.04
2	A	750	HEM	C1D-C2D-C3D	-2.21	104.64	106.96
2	A	750	HEM	C4C-CHD-C1D	2.12	125.36	122.56
4	A	800	H65	C22-C23-C24	-2.07	108.59	111.04
4	B	800	H65	C14-C13-C12	2.06	118.70	116.71
4	A	800	H65	C15-C14-C13	-2.04	118.11	120.94
2	B	750	HEM	CAD-C3D-C4D	2.01	128.18	124.66

There are no chirality outliers.

All (6) torsion outliers are listed below:

Mol	Chain	Res	Type	Atoms
4	B	800	H65	C08-C09-C13-C12
2	A	750	HEM	C4B-C3B-CAB-CBB
4	A	800	H65	C08-C09-C13-C12

Continued on next page...

Continued from previous page...

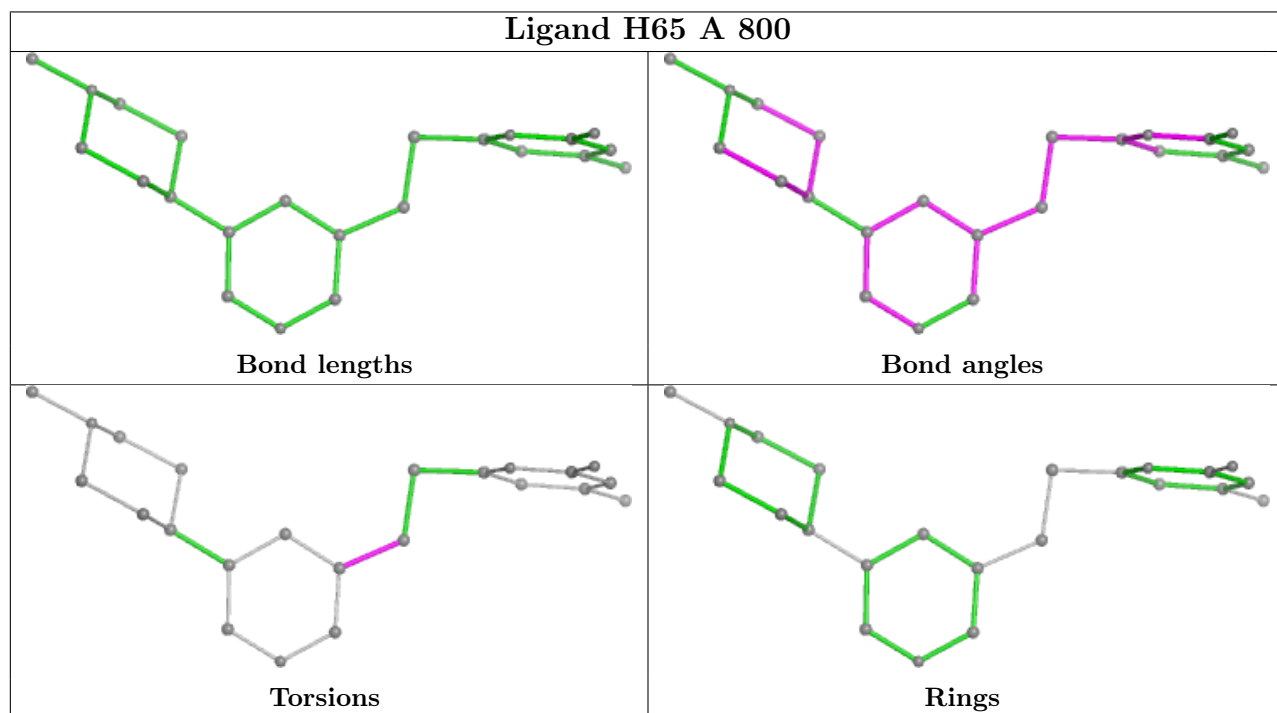
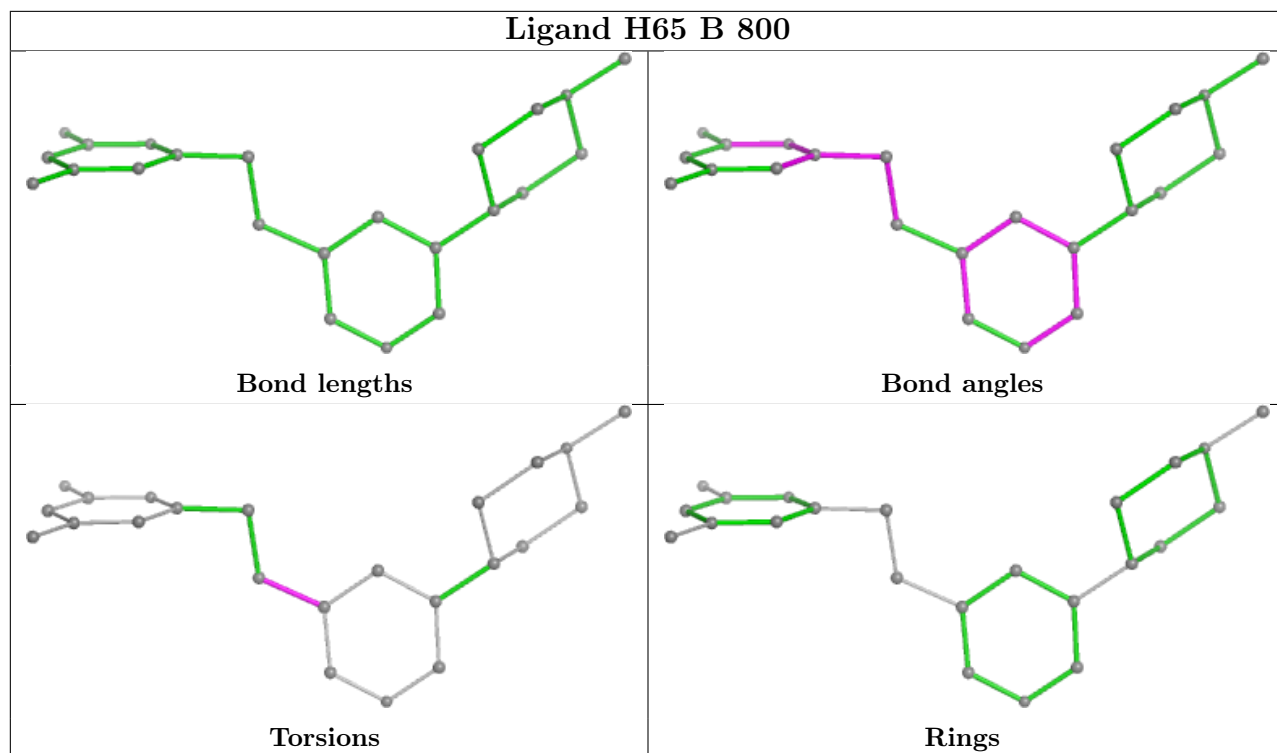
Mol	Chain	Res	Type	Atoms
4	B	800	H65	C08-C09-C13-C14
2	B	750	HEM	C4B-C3B-CAB-CBB
4	A	800	H65	C08-C09-C13-C14

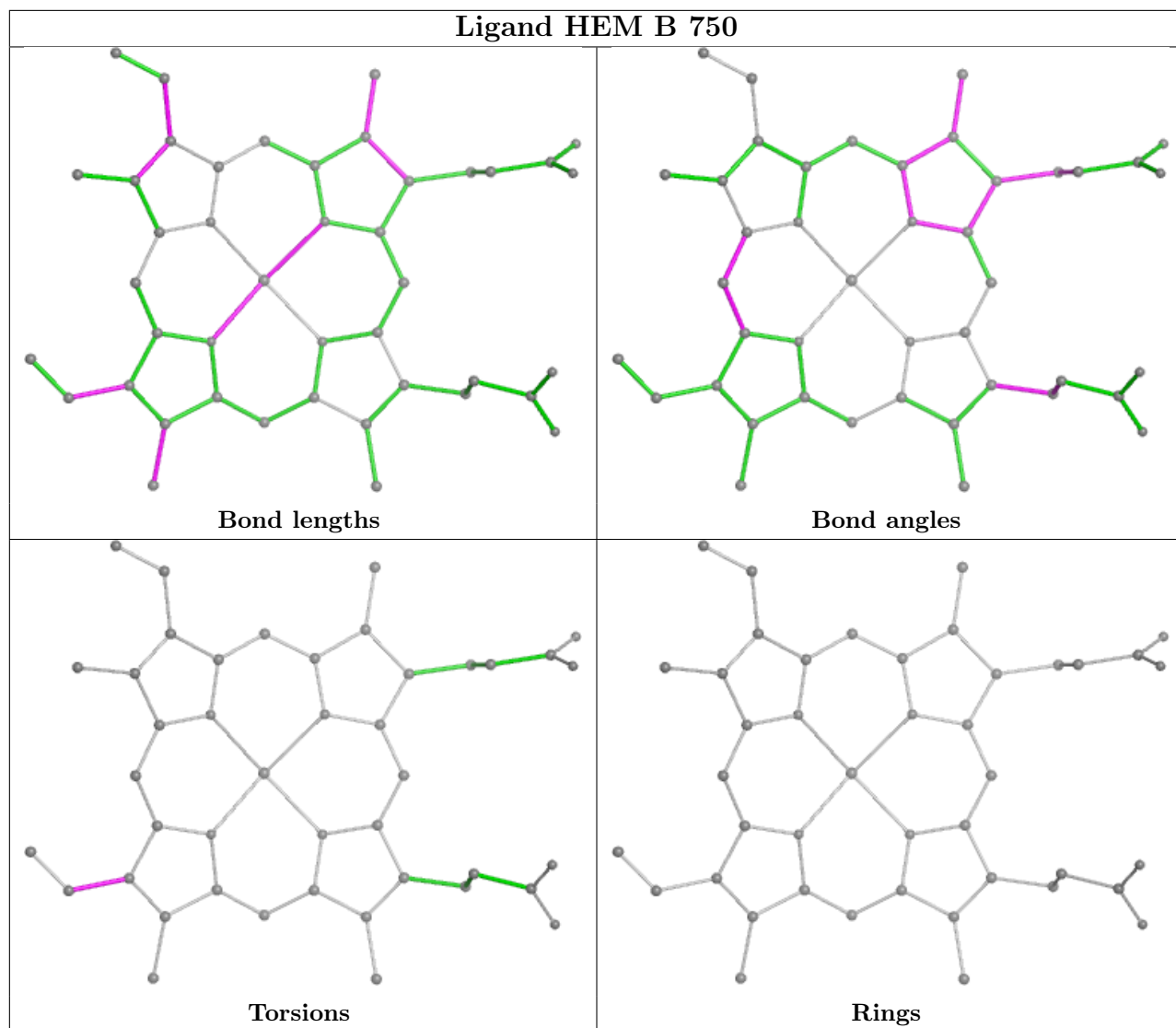
There are no ring outliers.

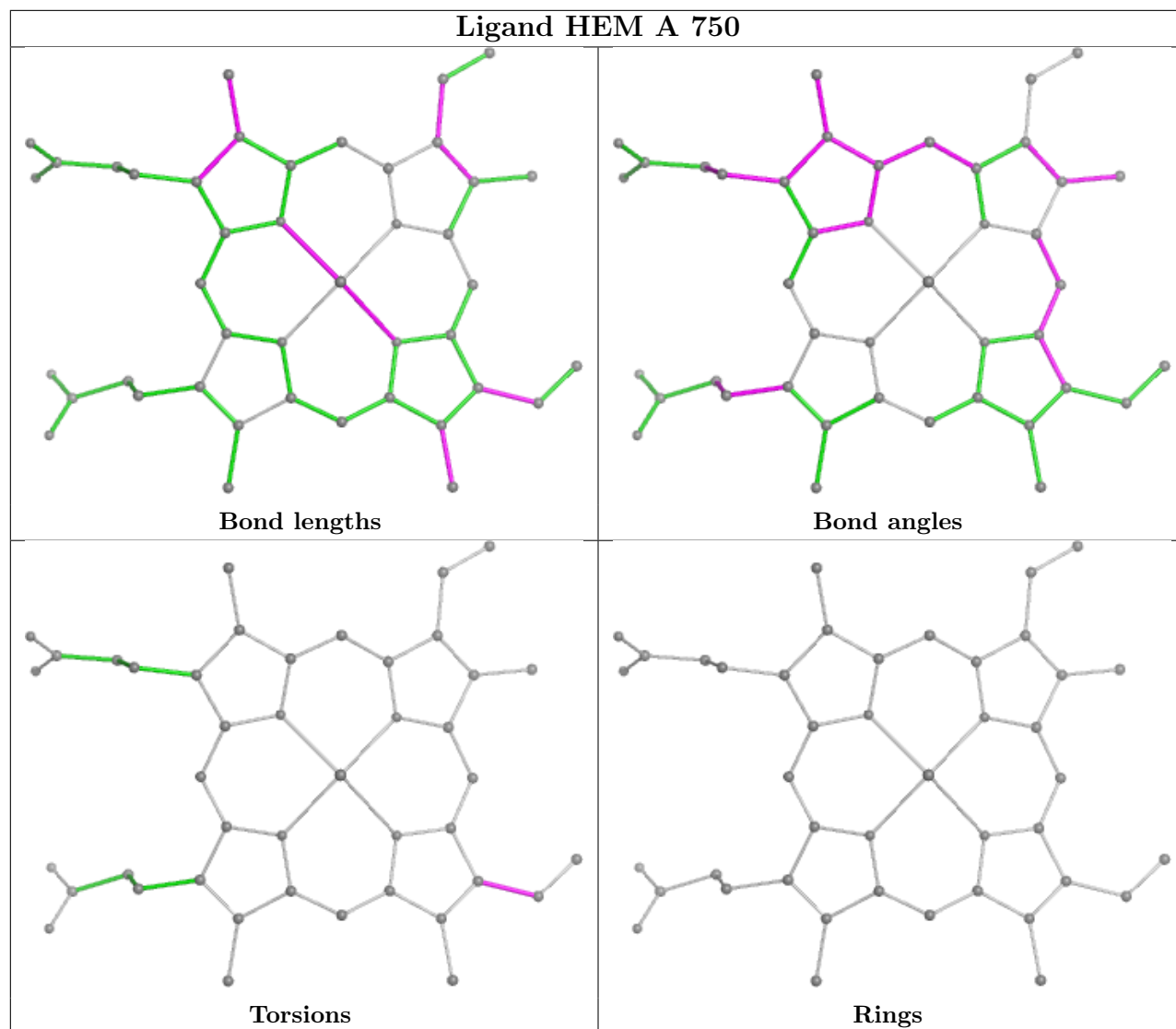
4 monomers are involved in 6 short contacts:

Mol	Chain	Res	Type	Clashes	Symm-Clashes
4	B	800	H65	1	0
5	B	860	ACT	1	0
2	B	750	HEM	2	0
2	A	750	HEM	3	0

The following is a two-dimensional graphical depiction of Mogul quality analysis of bond lengths, bond angles, torsion angles, and ring geometry for all instances of the Ligand of Interest. In addition, ligands with molecular weight > 250 and outliers as shown on the validation Tables will also be included. For torsion angles, if less than 5% of the Mogul distribution of torsion angles is within 10 degrees of the torsion angle in question, then that torsion angle is considered an outlier. Any bond that is central to one or more torsion angles identified as an outlier by Mogul will be highlighted in the graph. For rings, the root-mean-square deviation (RMSD) between the ring in question and similar rings identified by Mogul is calculated over all ring torsion angles. If the average RMSD is greater than 60 degrees and the minimal RMSD between the ring in question and any Mogul-identified rings is also greater than 60 degrees, then that ring is considered an outlier. The outliers are highlighted in purple. The color gray indicates Mogul did not find sufficient equivalents in the CSD to analyse the geometry.







5.7 Other polymers [i](#)

There are no such residues in this entry.

5.8 Polymer linkage issues [i](#)

There are no chain breaks in this entry.

6 Fit of model and data [i](#)

6.1 Protein, DNA and RNA chains [i](#)

In the following table, the column labelled '#RSRZ > 2' contains the number (and percentage) of RSRZ outliers, followed by percent RSRZ outliers for the chain as percentile scores relative to all X-ray entries and entries of similar resolution. The OWAB column contains the minimum, median, 95th percentile and maximum values of the occupancy-weighted average B-factor per residue. The column labelled 'Q < 0.9' lists the number of (and percentage) of residues with an average occupancy less than 0.9.

Mol	Chain	Analysed	<RSRZ>	#RSRZ>2	OWAB(Å ²)	Q<0.9
1	A	408/422 (96%)	-0.89	1 (0%) 95 94	19, 37, 71, 103	0
1	B	411/422 (97%)	-1.08	2 (0%) 91 91	17, 29, 55, 79	0
All	All	819/844 (97%)	-0.98	3 (0%) 92 92	17, 32, 66, 103	0

All (3) RSRZ outliers are listed below:

Mol	Chain	Res	Type	RSRZ
1	B	352	ASP	2.9
1	B	321	THR	2.1
1	A	321	THR	2.0

6.2 Non-standard residues in protein, DNA, RNA chains [i](#)

There are no non-standard protein/DNA/RNA residues in this entry.

6.3 Carbohydrates [i](#)

There are no monosaccharides in this entry.

6.4 Ligands [i](#)

In the following table, the Atoms column lists the number of modelled atoms in the group and the number defined in the chemical component dictionary. The B-factors column lists the minimum, median, 95th percentile and maximum values of B factors of atoms in the group. The column labelled 'Q < 0.9' lists the number of atoms with occupancy less than 0.9.

Mol	Type	Chain	Res	Atoms	RSCC	RSR	B-factors(Å ²)	Q<0.9
3	H4B	B	760	17/17	0.84	0.06	22,25,30,31	0
3	H4B	A	760	17/17	0.88	0.06	23,28,33,35	0

Continued on next page...

Continued from previous page...

Mol	Type	Chain	Res	Atoms	RSCC	RSR	B-factors(\AA^2)	Q<0.9
4	H65	A	800	23/23	0.92	0.10	17,42,52,55	0
4	H65	B	800	23/23	0.93	0.08	14,42,50,51	0
5	ACT	B	860	4/4	0.97	0.04	32,34,38,42	0
5	ACT	A	860	4/4	0.98	0.08	45,52,53,56	0
2	HEM	A	750	43/43	0.98	0.05	18,24,33,37	0
2	HEM	B	750	43/43	0.99	0.05	16,21,34,39	0
6	ZN	A	1717	1/1	1.00	0.02	26,26,26,26	0

6.5 Other polymers [\(i\)](#)

There are no such residues in this entry.