



Full wwPDB X-ray Structure Validation Report ⓘ

Sep 20, 2023 – 12:11 PM EDT

PDB ID : 5JQ2
Title : Crystal structure of the Ru(bpy)₂PhenA functionalized P450 BM3 L407C heme domain mutant in complex with N-palmitoylglycine
Authors : Kloos, M.
Deposited on : 2016-05-04
Resolution : 2.00 Å(reported)

This is a Full wwPDB X-ray Structure Validation Report for a publicly released PDB entry.

We welcome your comments at validation@mail.wwpdb.org

A user guide is available at

<https://www.wwpdb.org/validation/2017/XrayValidationReportHelp>

with specific help available everywhere you see the ⓘ symbol.

The types of validation reports are described at

<http://www.wwpdb.org/validation/2017/FAQs#types>.

The following versions of software and data (see [references ⓘ](#)) were used in the production of this report:

MolProbity : 4.02b-467
Mogul : 1.8.5 (274361), CSD as541be (2020)
Xtriage (Phenix) : 1.13
EDS : 2.35.1
buster-report : 1.1.7 (2018)
Percentile statistics : 20191225.v01 (using entries in the PDB archive December 25th 2019)
Refmac : 5.8.0158
CCP4 : 7.0.044 (Gargrove)
Ideal geometry (proteins) : Engh & Huber (2001)
Ideal geometry (DNA, RNA) : Parkinson et al. (1996)
Validation Pipeline (wwPDB-VP) : 2.35.1

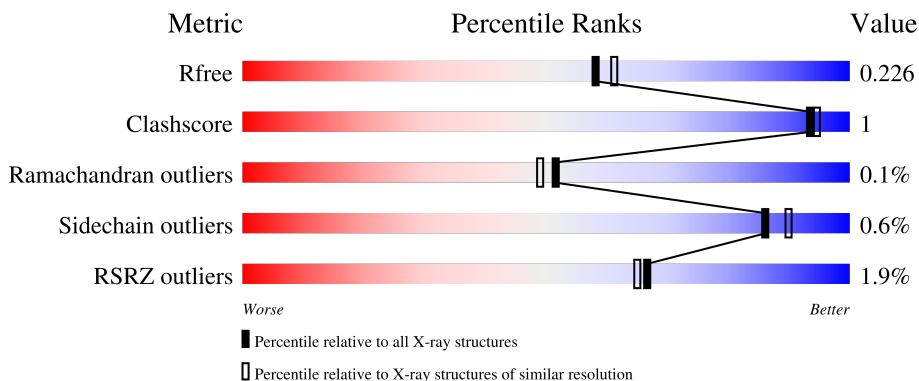
1 Overall quality at a glance

The following experimental techniques were used to determine the structure:

X-RAY DIFFRACTION

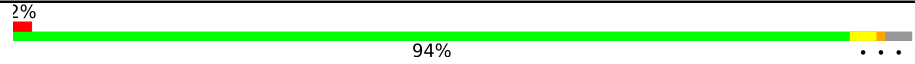
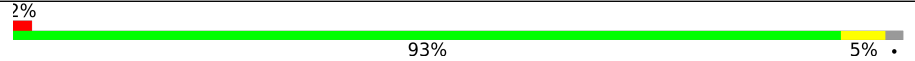
The reported resolution of this entry is 2.00 Å.

Percentile scores (ranging between 0-100) for global validation metrics of the entry are shown in the following graphic. The table shows the number of entries on which the scores are based.



Metric	Whole archive (#Entries)	Similar resolution (#Entries, resolution range(Å))
R_{free}	130704	8085 (2.00-2.00)
Clashscore	141614	9178 (2.00-2.00)
Ramachandran outliers	138981	9054 (2.00-2.00)
Sidechain outliers	138945	9053 (2.00-2.00)
RSRZ outliers	127900	7900 (2.00-2.00)

The table below summarises the geometric issues observed across the polymeric chains and their fit to the electron density. The red, orange, yellow and green segments of the lower bar indicate the fraction of residues that contain outliers for ≥ 3 , 2, 1 and 0 types of geometric quality criteria respectively. A grey segment represents the fraction of residues that are not modelled. The numeric value for each fraction is indicated below the corresponding segment, with a dot representing fractions $\leq 5\%$. The upper red bar (where present) indicates the fraction of residues that have poor fit to the electron density. The numeric value is given above the bar.

Mol	Chain	Length	Quality of chain
1	A	469	 2% 94% 2% 2% 2%
1	B	469	 2% 93% 5% 2% 2%

2 Entry composition [i](#)

There are 5 unique types of molecules in this entry. The entry contains 8085 atoms, of which 0 are hydrogens and 0 are deuteriums.

In the tables below, the ZeroOcc column contains the number of atoms modelled with zero occupancy, the AltConf column contains the number of residues with at least one atom in alternate conformation and the Trace column contains the number of residues modelled with at most 2 atoms.

- Molecule 1 is a protein called P450 BM3 L407C heme domain mutant.

Mol	Chain	Residues	Atoms					ZeroOcc	AltConf	Trace
			Total	C	N	O	S			
1	A	457	3687	2352	629	688	18	0	1	0
1	B	459	3691	2357	627	689	18	0	0	0

There are 14 discrepancies between the modelled and reference sequences:

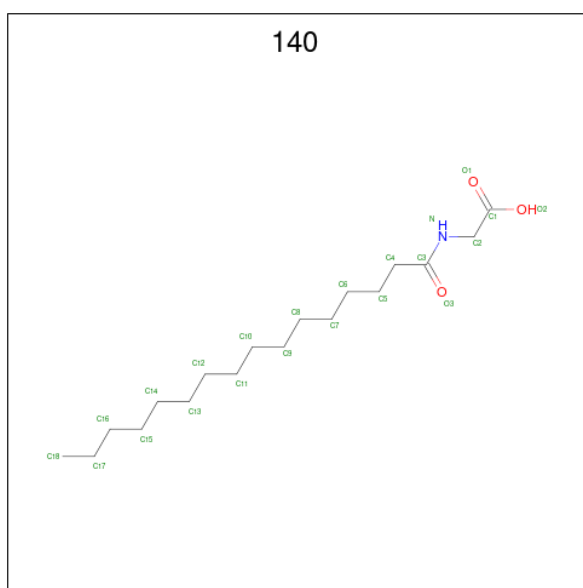
Chain	Residue	Modelled	Actual	Comment	Reference
A	407	CYS	LEU	engineered mutation	UNP P14779
A	464	HIS	-	expression tag	UNP P14779
A	465	HIS	-	expression tag	UNP P14779
A	466	HIS	-	expression tag	UNP P14779
A	467	HIS	-	expression tag	UNP P14779
A	468	HIS	-	expression tag	UNP P14779
A	469	HIS	-	expression tag	UNP P14779
B	407	CYS	LEU	engineered mutation	UNP P14779
B	464	HIS	-	expression tag	UNP P14779
B	465	HIS	-	expression tag	UNP P14779
B	466	HIS	-	expression tag	UNP P14779
B	467	HIS	-	expression tag	UNP P14779
B	468	HIS	-	expression tag	UNP P14779
B	469	HIS	-	expression tag	UNP P14779

- Molecule 2 is PROTOPORPHYRIN IX CONTAINING FE (three-letter code: HEM) (formula: C₃₄H₃₂FeN₄O₄).



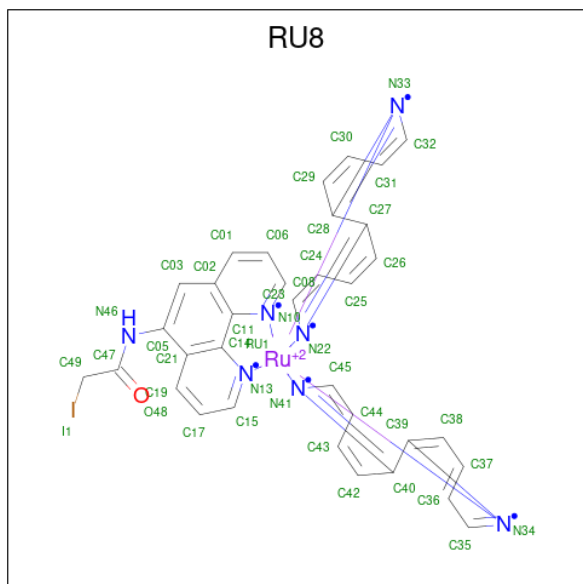
Mol	Chain	Residues	Atoms				ZeroOcc	AltConf	
2	A	1	Total	C	Fe	N	O	0	0
			43	34	1	4	4		
2	B	1	Total	C	Fe	N	O	0	0
			43	34	1	4	4		

- Molecule 3 is N-PALMITOYLGLYCINE (three-letter code: 140) (formula: $C_{18}H_{35}NO_3$).



Mol	Chain	Residues	Atoms				ZeroOcc	AltConf
3	A	1	Total	C	N	O	0	0
			22	18	1	3		
3	B	1	Total	C	N	O	0	0
			22	18	1	3		

- Molecule 4 is bis(2,2'-bipyridine-kappa 2 N 1 ,N 1') [2-iodo-N-(1,10-phenanthrolin-5-yl-kappa 2 N 1 ,N 10)acetamide]ruthenium(2+) (three-letter code: RU8) (formula: C₃₄H₂₆IN₇ORu).



Mol	Chain	Residues	Atoms				ZeroOcc	AltConf	
4	A	1	Total	C	N	O	Ru	0	0
			43	34	7	1	1		
4	B	1	Total	C	N	O	Ru	0	0
			43	34	7	1	1		

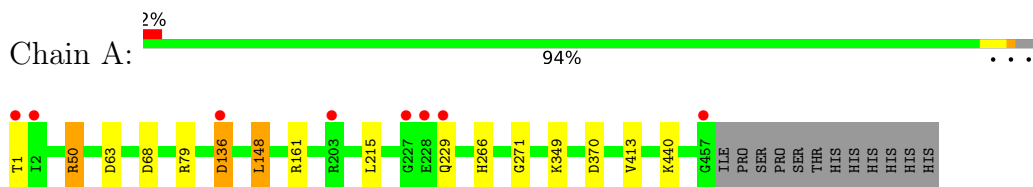
- Molecule 5 is water.

Mol	Chain	Residues	Atoms		ZeroOcc	AltConf
5	A	248	Total	O	0	0
			248	248		
5	B	243	Total	O	0	0
			243	243		

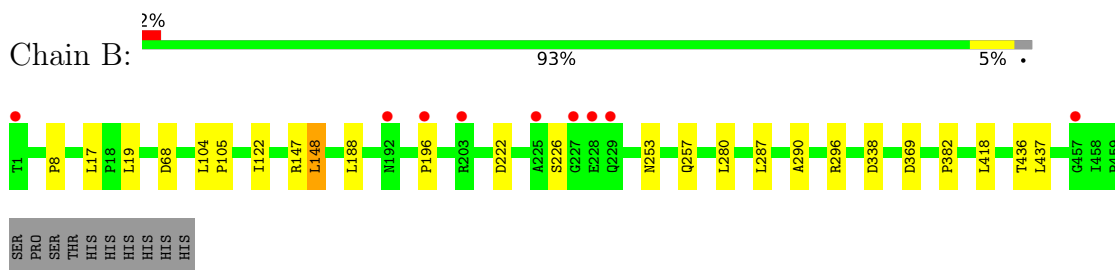
3 Residue-property plots [i](#)

These plots are drawn for all protein, RNA, DNA and oligosaccharide chains in the entry. The first graphic for a chain summarises the proportions of the various outlier classes displayed in the second graphic. The second graphic shows the sequence view annotated by issues in geometry and electron density. Residues are color-coded according to the number of geometric quality criteria for which they contain at least one outlier: green = 0, yellow = 1, orange = 2 and red = 3 or more. A red dot above a residue indicates a poor fit to the electron density ($RSRZ > 2$). Stretches of 2 or more consecutive residues without any outlier are shown as a green connector. Residues present in the sample, but not in the model, are shown in grey.

- Molecule 1: P450 BM3 L407C heme domain mutant



- Molecule 1: P450 BM3 L407C heme domain mutant



4 Data and refinement statistics

Property	Value	Source
Space group	P 21 21 21	Depositor
Cell constants a, b, c, α , β , γ	59.88Å 112.54Å 156.36Å 90.00° 90.00° 90.00°	Depositor
Resolution (Å)	47.54 – 2.00 47.54 – 1.90	Depositor EDS
% Data completeness (in resolution range)	99.1 (47.54-2.00) 99.2 (47.54-1.90)	Depositor EDS
R_{merge}	0.13	Depositor
R_{sym}	(Not available)	Depositor
$\langle I/\sigma(I) \rangle$ ¹	1.47 (at 1.90Å)	Xtrriage
Refinement program	REFMAC	Depositor
R, R_{free}	0.174 , 0.218 0.183 , 0.226	Depositor DCC
R_{free} test set	4172 reflections (5.00%)	wwPDB-VP
Wilson B-factor (Å ²)	24.7	Xtrriage
Anisotropy	0.220	Xtrriage
Bulk solvent k_{sol} (e/Å ³), B_{sol} (Å ²)	0.37 , 50.0	EDS
L-test for twinning ²	$\langle L \rangle = 0.49$, $\langle L^2 \rangle = 0.32$	Xtrriage
Estimated twinning fraction	No twinning to report.	Xtrriage
F_o, F_c correlation	0.96	EDS
Total number of atoms	8085	wwPDB-VP
Average B, all atoms (Å ²)	29.0	wwPDB-VP

Xtrriage's analysis on translational NCS is as follows: *The largest off-origin peak in the Patterson function is 4.65% of the height of the origin peak. No significant pseudotranslation is detected.*

¹Intensities estimated from amplitudes.

²Theoretical values of $\langle |L| \rangle$, $\langle L^2 \rangle$ for acentric reflections are 0.5, 0.333 respectively for untwinned datasets, and 0.375, 0.2 for perfectly twinned datasets.

5 Model quality [i](#)

5.1 Standard geometry [i](#)

Bond lengths and bond angles in the following residue types are not validated in this section: HEM, 140, RU8

The Z score for a bond length (or angle) is the number of standard deviations the observed value is removed from the expected value. A bond length (or angle) with $|Z| > 5$ is considered an outlier worth inspection. RMSZ is the root-mean-square of all Z scores of the bond lengths (or angles).

Mol	Chain	Bond lengths		Bond angles	
		RMSZ	# Z >5	RMSZ	# Z >5
1	A	0.73	0/3772	0.87	8/5098 (0.2%)
1	B	0.73	0/3777	0.87	6/5107 (0.1%)
All	All	0.73	0/7549	0.87	14/10205 (0.1%)

Chiral center outliers are detected by calculating the chiral volume of a chiral center and verifying if the center is modelled as a planar moiety or with the opposite hand. A planarity outlier is detected by checking planarity of atoms in a peptide group, atoms in a mainchain group or atoms of a sidechain that are expected to be planar.

Mol	Chain	#Chirality outliers	#Planarity outliers
1	A	0	2

There are no bond length outliers.

All (14) bond angle outliers are listed below:

Mol	Chain	Res	Type	Atoms	Z	Observed(°)	Ideal(°)
1	B	68	ASP	CB-CG-OD2	-7.21	111.81	118.30
1	A	79	ARG	NE-CZ-NH1	6.64	123.62	120.30
1	A	161	ARG	NE-CZ-NH2	-6.64	116.98	120.30
1	B	296	ARG	NE-CZ-NH2	-6.50	117.05	120.30
1	A	148	LEU	CA-CB-CG	6.24	129.66	115.30
1	A	50[A]	ARG	NE-CZ-NH2	-5.97	117.31	120.30
1	A	50[B]	ARG	NE-CZ-NH2	-5.97	117.31	120.30
1	A	161	ARG	NE-CZ-NH1	5.58	123.09	120.30
1	B	147	ARG	NE-CZ-NH2	-5.38	117.61	120.30
1	A	79	ARG	NE-CZ-NH2	-5.33	117.64	120.30
1	A	63	ASP	CB-CG-OD1	5.24	123.02	118.30
1	B	68	ASP	CB-CG-OD1	5.12	122.91	118.30
1	B	148	LEU	CA-CB-CG	5.08	127.00	115.30
1	B	338	ASP	CB-CG-OD1	5.02	122.82	118.30

There are no chirality outliers.

All (2) planarity outliers are listed below:

Mol	Chain	Res	Type	Group
1	A	136	ASP	Peptide
1	A	229	GLN	Peptide

5.2 Too-close contacts [i](#)

In the following table, the Non-H and H(model) columns list the number of non-hydrogen atoms and hydrogen atoms in the chain respectively. The H(added) column lists the number of hydrogen atoms added and optimized by MolProbity. The Clashes column lists the number of clashes within the asymmetric unit, whereas Symm-Clashes lists symmetry-related clashes.

Mol	Chain	Non-H	H(model)	H(added)	Clashes	Symm-Clashes
1	A	3687	0	3656	6	0
1	B	3691	0	3662	11	0
2	A	43	0	30	4	0
2	B	43	0	30	0	0
3	A	22	0	34	0	0
3	B	22	0	34	0	0
4	A	43	0	24	0	0
4	B	43	0	24	2	0
5	A	248	0	0	2	0
5	B	243	0	0	1	0
All	All	8085	0	7494	21	0

The all-atom clashscore is defined as the number of clashes found per 1000 atoms (including hydrogen atoms). The all-atom clashscore for this structure is 1.

All (21) close contacts within the same asymmetric unit are listed below, sorted by their clash magnitude.

Atom-1	Atom-2	Interatomic distance (Å)	Clash overlap (Å)
1:A:50[B]:ARG:NH1	5:A:601:HOH:O	2.07	0.78
1:A:136:ASP:HB2	5:B:706:HOH:O	1.92	0.69
2:A:501:HEM:HBB2	2:A:501:HEM:HMB2	1.84	0.59
1:A:148:LEU:HD11	1:A:413:VAL:HG21	1.85	0.59
1:B:382:PRO:HG2	4:B:503:RU8:H32	1.88	0.56
1:A:349:LYS:NZ	5:A:602:HOH:O	2.35	0.52
1:B:8:PRO:HB2	1:B:19:LEU:HD21	1.91	0.52
1:B:382:PRO:HB2	4:B:503:RU8:H31	1.92	0.52
2:A:501:HEM:HMC2	2:A:501:HEM:HBC2	1.93	0.51

Continued on next page...

Continued from previous page...

Atom-1	Atom-2	Interatomic distance (Å)	Clash overlap (Å)
2:A:501:HEM:HBB2	2:A:501:HEM:CMB	2.45	0.46
1:B:17:LEU:HD11	1:B:188:LEU:O	2.15	0.46
1:A:271:GLY:HA2	1:A:440:LYS:HG3	1.98	0.45
1:B:222:ASP:O	1:B:226:SER:HB3	2.16	0.45
1:B:290:ALA:HB1	1:B:418:LEU:HD13	2.01	0.42
1:B:122:ILE:HG22	1:B:148:LEU:HD22	2.01	0.42
2:A:501:HEM:HBC2	2:A:501:HEM:CMC	2.50	0.41
1:B:104:LEU:N	1:B:105:PRO:CD	2.84	0.41
1:B:436:THR:O	1:B:437:LEU:HB2	2.21	0.41
1:A:1:THR:O	1:A:1:THR:HG23	2.22	0.40
1:B:280:LEU:HD22	1:B:287:LEU:HA	2.02	0.40
1:B:253:ASN:O	1:B:257:GLN:HG2	2.21	0.40

There are no symmetry-related clashes.

5.3 Torsion angles [i](#)

5.3.1 Protein backbone [i](#)

In the following table, the Percentiles column shows the percent Ramachandran outliers of the chain as a percentile score with respect to all X-ray entries followed by that with respect to entries of similar resolution.

The Analysed column shows the number of residues for which the backbone conformation was analysed, and the total number of residues.

Mol	Chain	Analysed	Favoured	Allowed	Outliers	Percentiles	
1	A	456/469 (97%)	442 (97%)	14 (3%)	0	100	100
1	B	457/469 (97%)	436 (95%)	20 (4%)	1 (0%)	47	44
All	All	913/938 (97%)	878 (96%)	34 (4%)	1 (0%)	51	49

All (1) Ramachandran outliers are listed below:

Mol	Chain	Res	Type
1	B	196	PRO

5.3.2 Protein sidechains [i](#)

In the following table, the Percentiles column shows the percent sidechain outliers of the chain as a percentile score with respect to all X-ray entries followed by that with respect to entries of similar resolution.

The Analysed column shows the number of residues for which the sidechain conformation was analysed, and the total number of residues.

Mol	Chain	Analysed	Rotameric	Outliers	Percentiles	
1	A	400/411 (97%)	396 (99%)	4 (1%)	76	81
1	B	401/411 (98%)	400 (100%)	1 (0%)	93	95
All	All	801/822 (97%)	796 (99%)	5 (1%)	86	90

All (5) residues with a non-rotameric sidechain are listed below:

Mol	Chain	Res	Type
1	A	68	ASP
1	A	215	LEU
1	A	266	HIS
1	A	370	ASP
1	B	369	ASP

Sometimes sidechains can be flipped to improve hydrogen bonding and reduce clashes. All (6) such sidechains are listed below:

Mol	Chain	Res	Type
1	A	169	GLN
1	A	236	HIS
1	A	239	ASN
1	B	73	GLN
1	B	110	GLN
1	B	229	GLN

5.3.3 RNA [i](#)

There are no RNA molecules in this entry.

5.4 Non-standard residues in protein, DNA, RNA chains [i](#)

There are no non-standard protein/DNA/RNA residues in this entry.

5.5 Carbohydrates [i](#)

There are no monosaccharides in this entry.

5.6 Ligand geometry [i](#)

6 ligands are modelled in this entry.

In the following table, the Counts columns list the number of bonds (or angles) for which Mogul statistics could be retrieved, the number of bonds (or angles) that are observed in the model and the number of bonds (or angles) that are defined in the Chemical Component Dictionary. The Link column lists molecule types, if any, to which the group is linked. The Z score for a bond length (or angle) is the number of standard deviations the observed value is removed from the expected value. A bond length (or angle) with $|Z| > 2$ is considered an outlier worth inspection. RMSZ is the root-mean-square of all Z scores of the bond lengths (or angles).

Mol	Type	Chain	Res	Link	Bond lengths			Bond angles		
					Counts	RMSZ	# Z > 2	Counts	RMSZ	# Z > 2
2	HEM	B	501	1	41,50,50	1.44	7 (17%)	45,82,82	2.03	15 (33%)
4	RU8	B	503	1	52,52,53	1.79	9 (17%)	55,87,88	1.56	13 (23%)
3	140	A	502	-	21,21,21	0.57	0	22,22,22	1.17	1 (4%)
3	140	B	502	-	21,21,21	0.60	0	22,22,22	0.89	1 (4%)
4	RU8	A	503	1	52,52,53	1.89	12 (23%)	55,87,88	1.64	12 (21%)
2	HEM	A	501	1	41,50,50	1.39	7 (17%)	45,82,82	1.80	13 (28%)

In the following table, the Chirals column lists the number of chiral outliers, the number of chiral centers analysed, the number of these observed in the model and the number defined in the Chemical Component Dictionary. Similar counts are reported in the Torsion and Rings columns. '-' means no outliers of that kind were identified.

Mol	Type	Chain	Res	Link	Chirals	Torsions	Rings
2	HEM	B	501	1	-	3/12/54/54	-
4	RU8	B	503	1	-	0/4/116/118	0/10/10/10
3	140	A	502	-	-	8/20/20/20	-
3	140	B	502	-	-	1/20/20/20	-
4	RU8	A	503	1	-	0/4/116/118	0/10/10/10
2	HEM	A	501	1	-	2/12/54/54	-

All (35) bond length outliers are listed below:

Mol	Chain	Res	Type	Atoms	Z	Observed(Å)	Ideal(Å)
4	A	503	RU8	C03-C05	5.31	1.42	1.36

Continued on next page...

Continued from previous page...

Mol	Chain	Res	Type	Atoms	Z	Observed(Å)	Ideal(Å)
4	B	503	RU8	C03-C05	5.14	1.42	1.36
4	A	503	RU8	C02-C11	5.10	1.50	1.41
4	B	503	RU8	C28-C27	4.67	1.51	1.39
4	A	503	RU8	C28-C27	4.50	1.51	1.39
4	B	503	RU8	C40-C39	4.33	1.51	1.39
4	A	503	RU8	C40-C39	4.01	1.50	1.39
4	A	503	RU8	C39-N34	3.73	1.41	1.37
4	B	503	RU8	C02-C11	3.73	1.47	1.41
2	B	501	HEM	C1B-NB	-3.60	1.34	1.40
4	B	503	RU8	C21-C14	3.47	1.47	1.41
2	A	501	HEM	CHB-C1B	3.37	1.43	1.35
4	B	503	RU8	C05-C21	3.31	1.49	1.43
4	A	503	RU8	C05-C21	3.31	1.49	1.43
4	B	503	RU8	C39-N34	3.30	1.41	1.37
2	B	501	HEM	C4B-NB	-3.04	1.32	1.38
4	B	503	RU8	C11-N10	2.97	1.43	1.37
4	A	503	RU8	C47-N46	-2.83	1.30	1.36
4	A	503	RU8	C21-C14	2.82	1.46	1.41
2	B	501	HEM	FE-NB	2.82	2.10	1.96
2	A	501	HEM	C3B-C4B	2.73	1.50	1.44
2	A	501	HEM	C1B-NB	-2.48	1.36	1.40
4	A	503	RU8	C11-N10	2.45	1.42	1.37
2	B	501	HEM	C4D-C3D	2.40	1.49	1.45
2	B	501	HEM	CHA-C4D	2.40	1.41	1.35
2	A	501	HEM	O2D-CGD	-2.38	1.22	1.30
2	A	501	HEM	CMA-C3A	2.37	1.56	1.51
4	A	503	RU8	C14-C11	2.34	1.48	1.43
2	B	501	HEM	CHB-C1B	2.33	1.40	1.35
2	B	501	HEM	C4D-ND	-2.30	1.36	1.40
2	A	501	HEM	FE-NB	2.30	2.08	1.96
4	A	503	RU8	C06-C01	2.29	1.41	1.36
4	A	503	RU8	O48-C47	-2.11	1.18	1.23
4	B	503	RU8	C14-C11	2.08	1.48	1.43
2	A	501	HEM	CHA-C4D	2.07	1.40	1.35

All (55) bond angle outliers are listed below:

Mol	Chain	Res	Type	Atoms	Z	Observed(°)	Ideal(°)
2	B	501	HEM	C1B-NB-C4B	5.83	111.09	105.07
2	A	501	HEM	C1B-NB-C4B	4.28	109.50	105.07
2	A	501	HEM	C2C-C3C-C4C	4.19	109.82	106.90
4	A	503	RU8	C23-N22-C27	3.90	123.59	118.00

Continued on next page...

Continued from previous page...

Mol	Chain	Res	Type	Atoms	Z	Observed(°)	Ideal(°)
2	A	501	HEM	CHC-C4B-NB	3.77	128.53	124.43
2	B	501	HEM	C2C-C3C-C4C	3.75	109.52	106.90
4	A	503	RU8	C21-C05-N46	-3.70	112.10	118.36
4	B	503	RU8	C23-N22-C27	3.54	123.07	118.00
2	B	501	HEM	CHC-C4B-NB	3.44	128.17	124.43
4	A	503	RU8	C49-C47-N46	3.29	119.81	114.98
2	B	501	HEM	C4B-CHC-C1C	3.22	126.81	122.56
2	B	501	HEM	C3B-C2B-C1B	-3.05	104.23	106.49
2	A	501	HEM	CHA-C4D-ND	3.04	128.14	124.38
4	B	503	RU8	C29-C28-C27	-3.02	120.79	129.75
2	B	501	HEM	O2A-CGA-CBA	2.95	123.52	114.03
4	A	503	RU8	C29-C28-C27	-2.95	121.01	129.75
2	B	501	HEM	CHD-C1D-C2D	-2.86	120.51	124.98
4	A	503	RU8	C42-C40-C39	-2.83	121.37	129.75
2	B	501	HEM	C3C-C4C-NC	-2.78	105.70	110.94
4	B	503	RU8	C08-C06-C01	2.74	123.24	119.39
2	A	501	HEM	CHD-C1D-ND	2.61	127.26	124.43
2	B	501	HEM	CHA-C4D-C3D	-2.59	120.47	125.33
4	A	503	RU8	O48-C47-C49	-2.59	117.25	122.06
4	B	503	RU8	C45-N41-C40	2.56	121.67	118.00
2	A	501	HEM	O2A-CGA-CBA	2.56	122.24	114.03
4	B	503	RU8	C35-N34-C39	2.54	121.64	118.00
2	A	501	HEM	CMC-C2C-C3C	2.53	129.41	124.68
4	B	503	RU8	C42-C40-C39	-2.50	122.33	129.75
4	A	503	RU8	C35-N34-C39	2.48	121.56	118.00
4	B	503	RU8	C32-N33-C28	2.48	121.55	118.00
4	A	503	RU8	C01-C02-C03	2.47	126.38	122.02
3	B	502	140	O3-C3-C4	-2.42	117.60	122.02
3	A	502	140	C4-C3-N	2.38	120.44	116.42
2	A	501	HEM	CHA-C4D-C3D	-2.36	120.90	125.33
2	B	501	HEM	CHA-C4D-ND	2.34	127.28	124.38
4	A	503	RU8	C15-N13-C14	2.34	122.64	117.51
4	A	503	RU8	C32-N33-C28	2.32	121.33	118.00
2	A	501	HEM	CMB-C2B-C1B	2.31	128.55	125.04
4	A	503	RU8	C05-C03-C02	2.29	123.75	121.32
2	B	501	HEM	C2D-C1D-ND	2.27	112.60	109.88
2	A	501	HEM	CHD-C1D-C2D	-2.25	121.47	124.98
2	A	501	HEM	C3C-C4C-NC	-2.24	106.72	110.94
4	B	503	RU8	C03-C05-C21	-2.23	118.94	120.50
2	B	501	HEM	CMC-C2C-C3C	2.21	128.81	124.68
2	B	501	HEM	O2D-CGD-CBD	2.21	121.12	114.03
2	A	501	HEM	CAD-C3D-C4D	2.21	128.51	124.66

Continued on next page...

Continued from previous page...

Mol	Chain	Res	Type	Atoms	Z	Observed(°)	Ideal(°)
2	B	501	HEM	CAD-C3D-C4D	2.19	128.48	124.66
2	A	501	HEM	O2A-CGA-O1A	-2.14	117.96	123.30
4	B	503	RU8	C38-C39-C40	-2.12	123.47	129.75
4	B	503	RU8	C36-C35-N34	-2.11	118.44	122.71
4	A	503	RU8	C19-C21-C05	2.07	126.30	123.00
4	B	503	RU8	C05-C03-C02	2.06	123.52	121.32
4	B	503	RU8	C14-C11-N10	2.06	119.34	116.56
4	B	503	RU8	C49-C47-N46	2.04	117.98	114.98
2	B	501	HEM	CHB-C1B-NB	2.04	126.90	124.38

There are no chirality outliers.

All (14) torsion outliers are listed below:

Mol	Chain	Res	Type	Atoms
3	A	502	140	O3-C3-C4-C5
3	B	502	140	C15-C16-C17-C18
3	A	502	140	N-C3-C4-C5
3	A	502	140	C7-C8-C9-C10
3	A	502	140	C11-C12-C13-C14
3	A	502	140	C15-C16-C17-C18
3	A	502	140	C12-C13-C14-C15
2	B	501	HEM	CAD-CBD-CGD-O1D
2	A	501	HEM	CAD-CBD-CGD-O1D
2	B	501	HEM	CAD-CBD-CGD-O2D
2	A	501	HEM	CAD-CBD-CGD-O2D
3	A	502	140	C13-C14-C15-C16
2	B	501	HEM	CAA-CBA-CGA-O2A
3	A	502	140	C10-C11-C12-C13

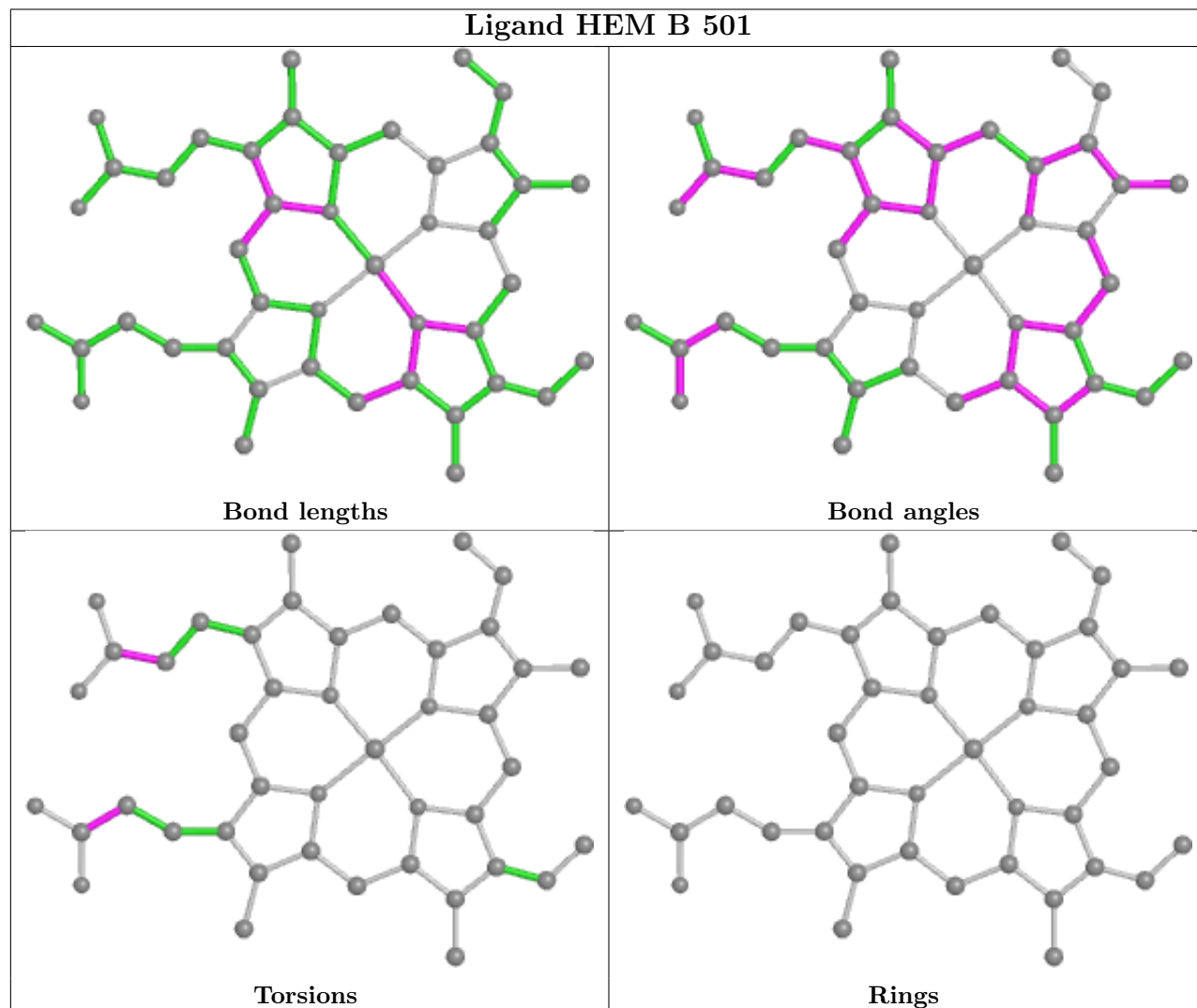
There are no ring outliers.

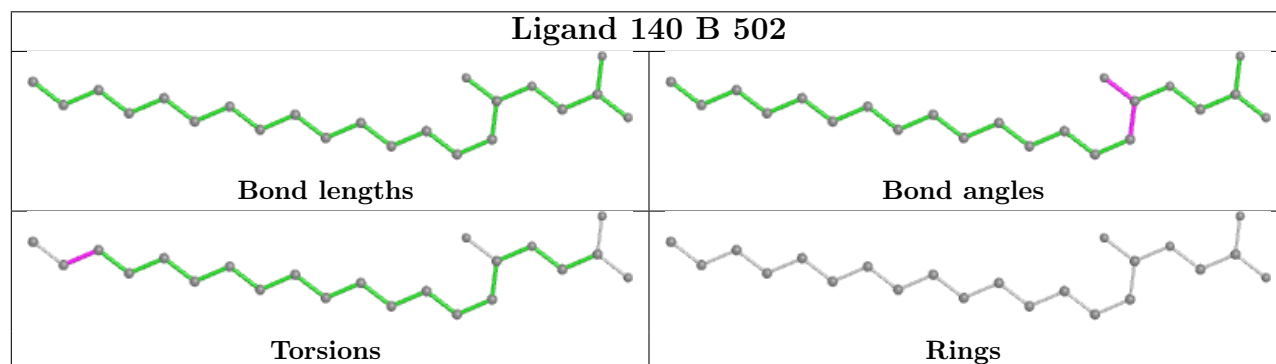
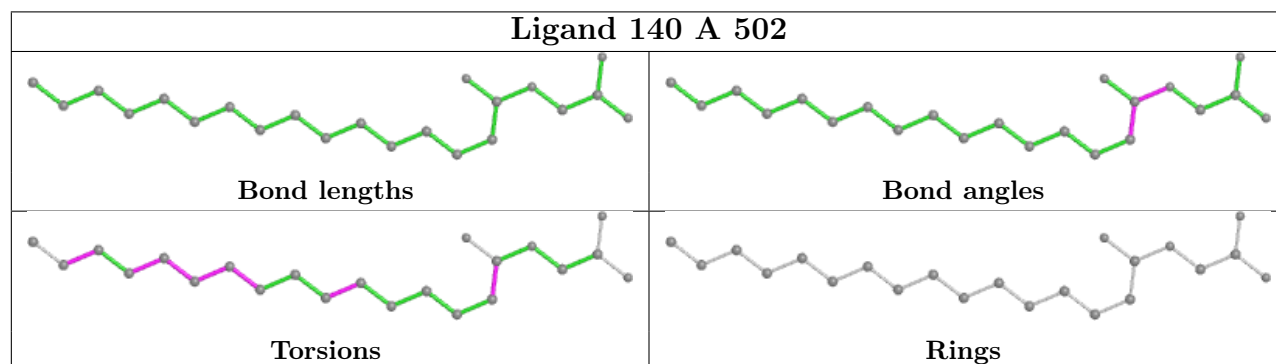
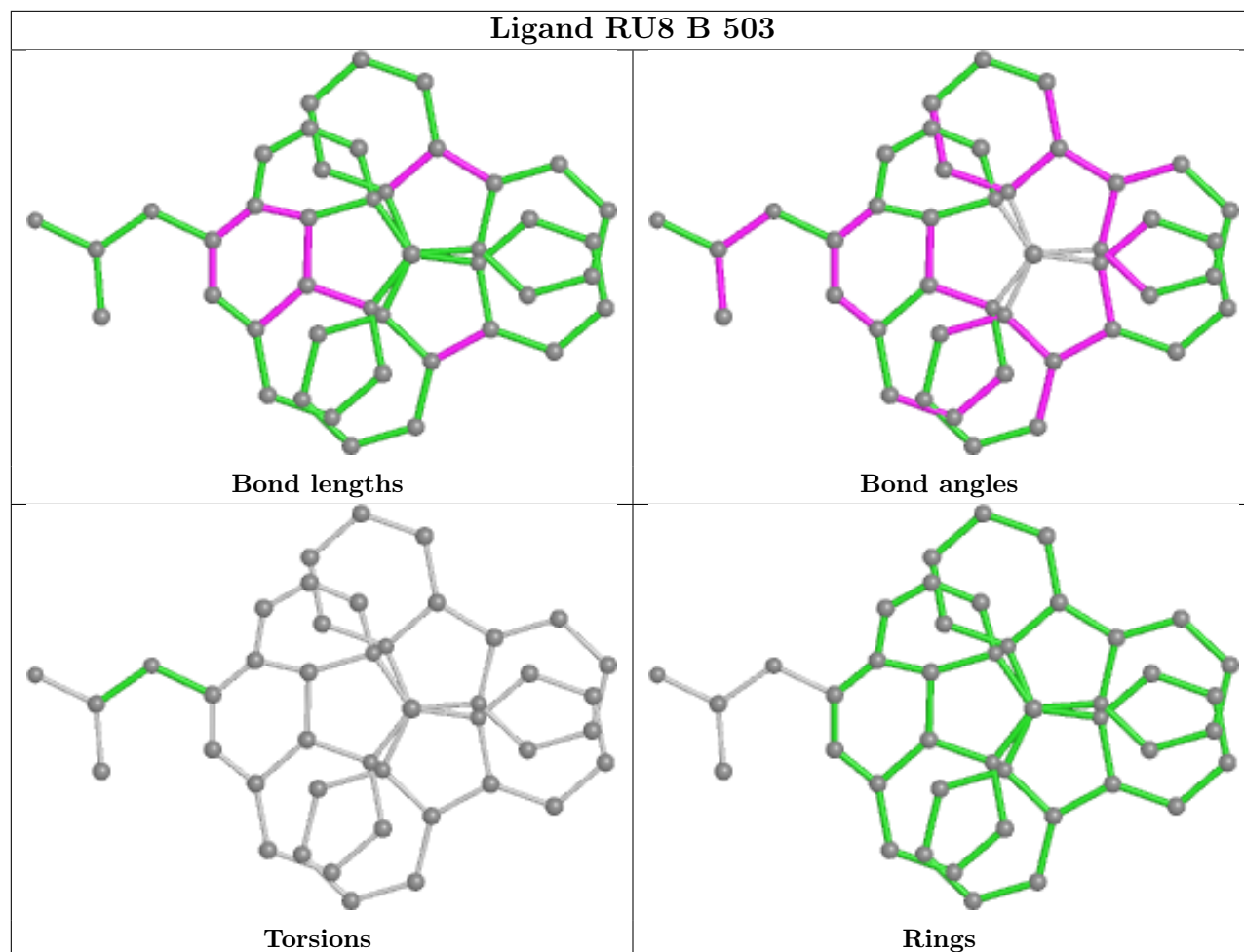
2 monomers are involved in 6 short contacts:

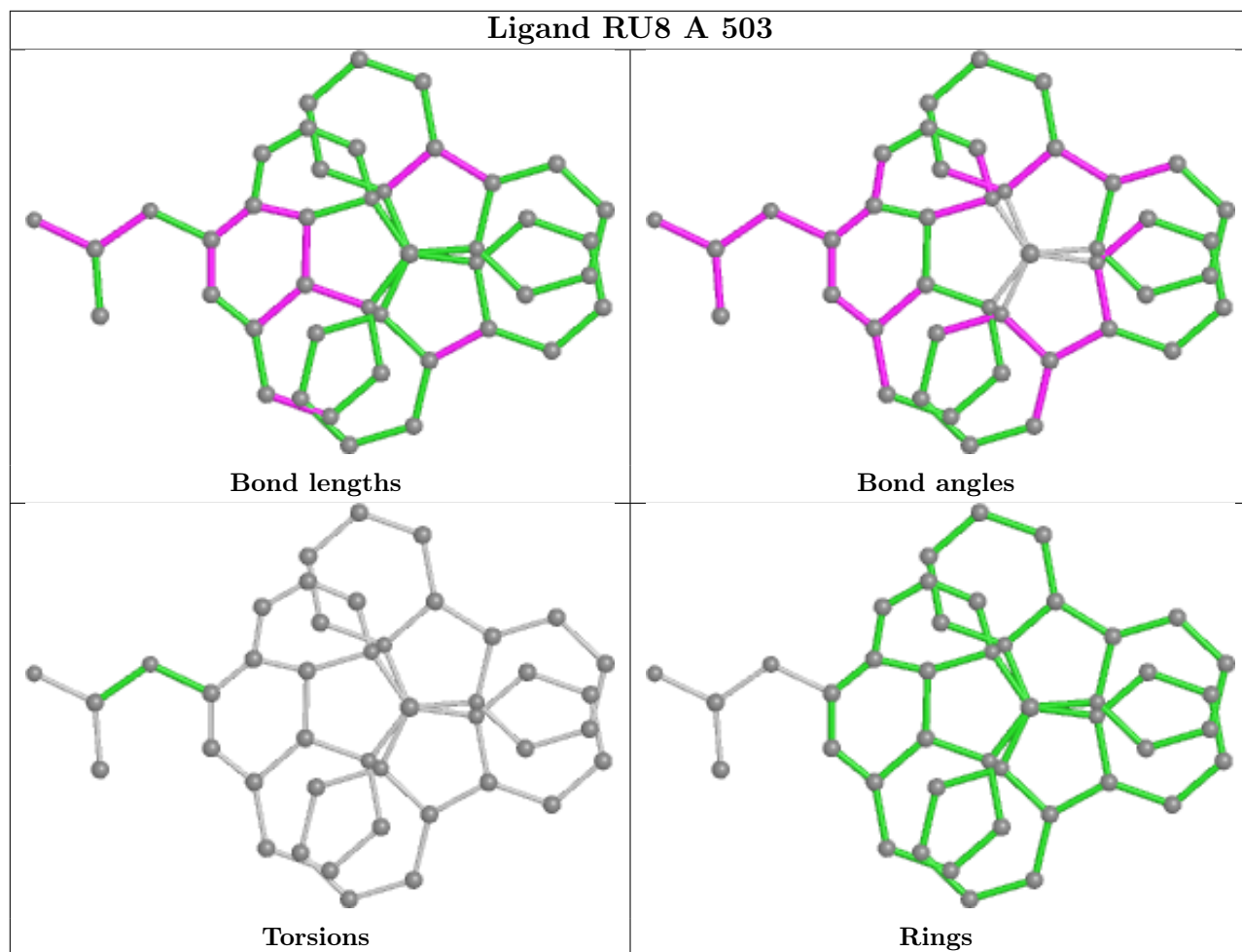
Mol	Chain	Res	Type	Clashes	Symm-Clashes
4	B	503	RU8	2	0
2	A	501	HEM	4	0

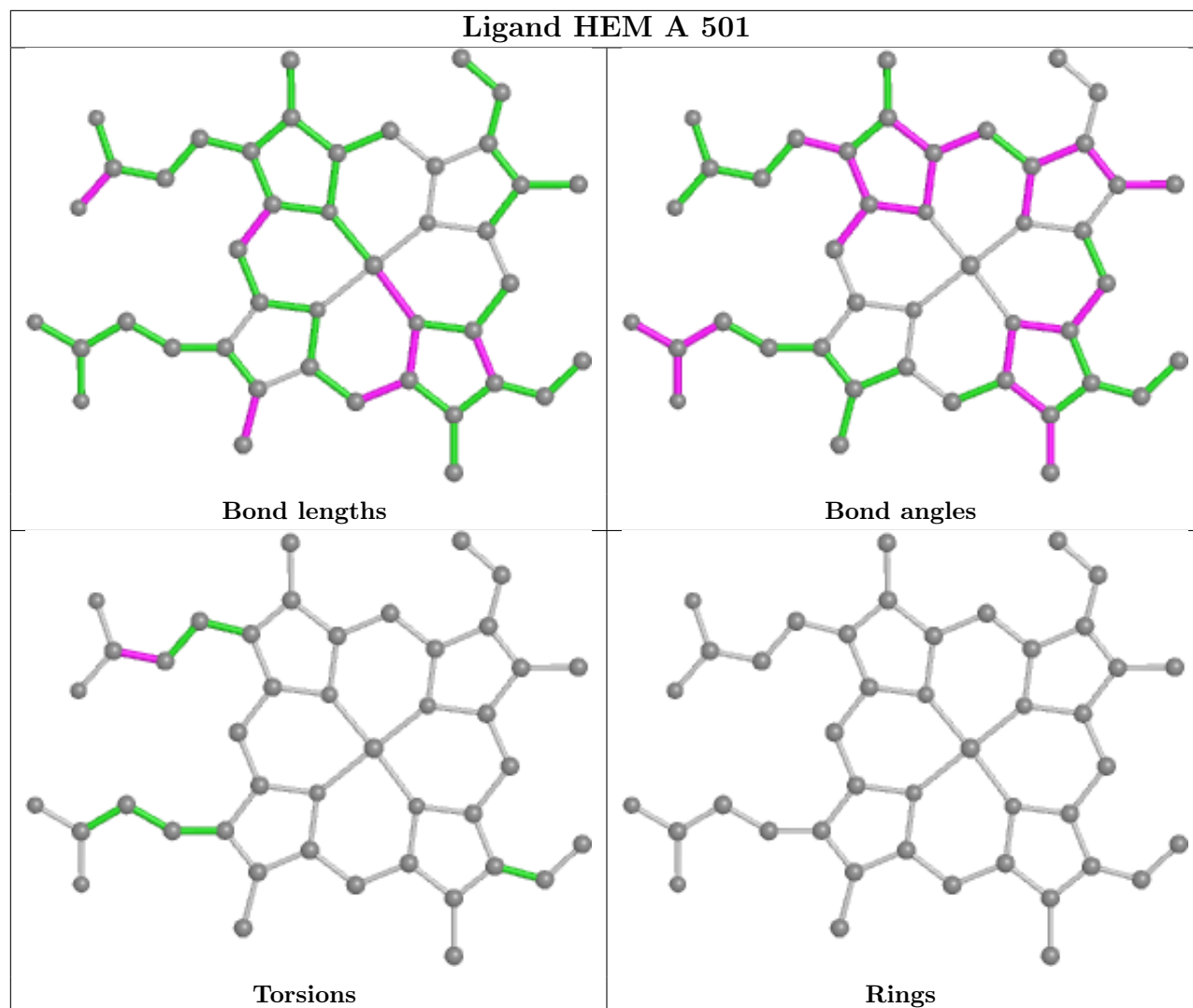
The following is a two-dimensional graphical depiction of Mogul quality analysis of bond lengths, bond angles, torsion angles, and ring geometry for all instances of the Ligand of Interest. In addition, ligands with molecular weight > 250 and outliers as shown on the validation Tables will also be included. For torsion angles, if less than 5% of the Mogul distribution of torsion angles is within 10 degrees of the torsion angle in question, then that torsion angle is considered an outlier. Any bond that is central to one or more torsion angles identified as an outlier by Mogul will be

highlighted in the graph. For rings, the root-mean-square deviation (RMSD) between the ring in question and similar rings identified by Mogul is calculated over all ring torsion angles. If the average RMSD is greater than 60 degrees and the minimal RMSD between the ring in question and any Mogul-identified rings is also greater than 60 degrees, then that ring is considered an outlier. The outliers are highlighted in purple. The color gray indicates Mogul did not find sufficient equivalents in the CSD to analyse the geometry.









5.7 Other polymers [i](#)

There are no such residues in this entry.

5.8 Polymer linkage issues [i](#)

There are no chain breaks in this entry.

6 Fit of model and data [i](#)

6.1 Protein, DNA and RNA chains [i](#)

In the following table, the column labelled ‘#RSRZ > 2’ contains the number (and percentage) of RSRZ outliers, followed by percent RSRZ outliers for the chain as percentile scores relative to all X-ray entries and entries of similar resolution. The OWAB column contains the minimum, median, 95th percentile and maximum values of the occupancy-weighted average B-factor per residue. The column labelled ‘Q < 0.9’ lists the number of (and percentage) of residues with an average occupancy less than 0.9.

Mol	Chain	Analysed	<RSRZ>	#RSRZ>2	OWAB(Å ²)	Q<0.9
1	A	457/469 (97%)	-0.42	8 (1%) 68 66	16, 25, 48, 94	0
1	B	459/469 (97%)	-0.37	9 (1%) 65 63	17, 26, 54, 103	0
All	All	916/938 (97%)	-0.40	17 (1%) 66 65	16, 26, 51, 103	0

All (17) RSRZ outliers are listed below:

Mol	Chain	Res	Type	RSRZ
1	B	227	GLY	7.4
1	B	228	GLU	5.5
1	A	229	GLN	4.5
1	A	1	THR	3.5
1	B	196	PRO	3.4
1	A	2	ILE	3.2
1	A	457	GLY	3.2
1	A	228	GLU	3.1
1	A	136	ASP	2.8
1	B	229	GLN	2.8
1	B	192	ASN	2.8
1	B	225	ALA	2.7
1	B	457	GLY	2.6
1	B	1	THR	2.6
1	B	203	ARG	2.4
1	A	227	GLY	2.4
1	A	203	ARG	2.3

6.2 Non-standard residues in protein, DNA, RNA chains [i](#)

There are no non-standard protein/DNA/RNA residues in this entry.

6.3 Carbohydrates [i](#)

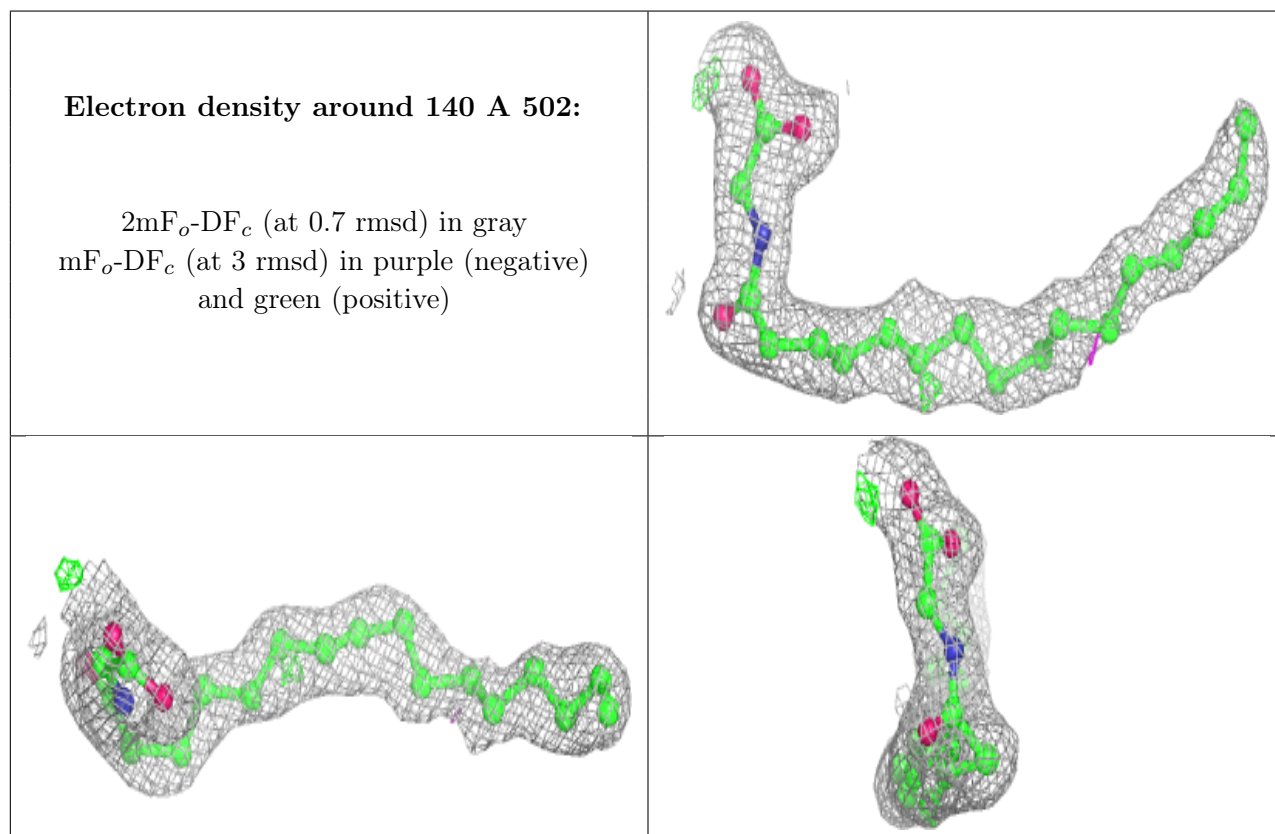
There are no monosaccharides in this entry.

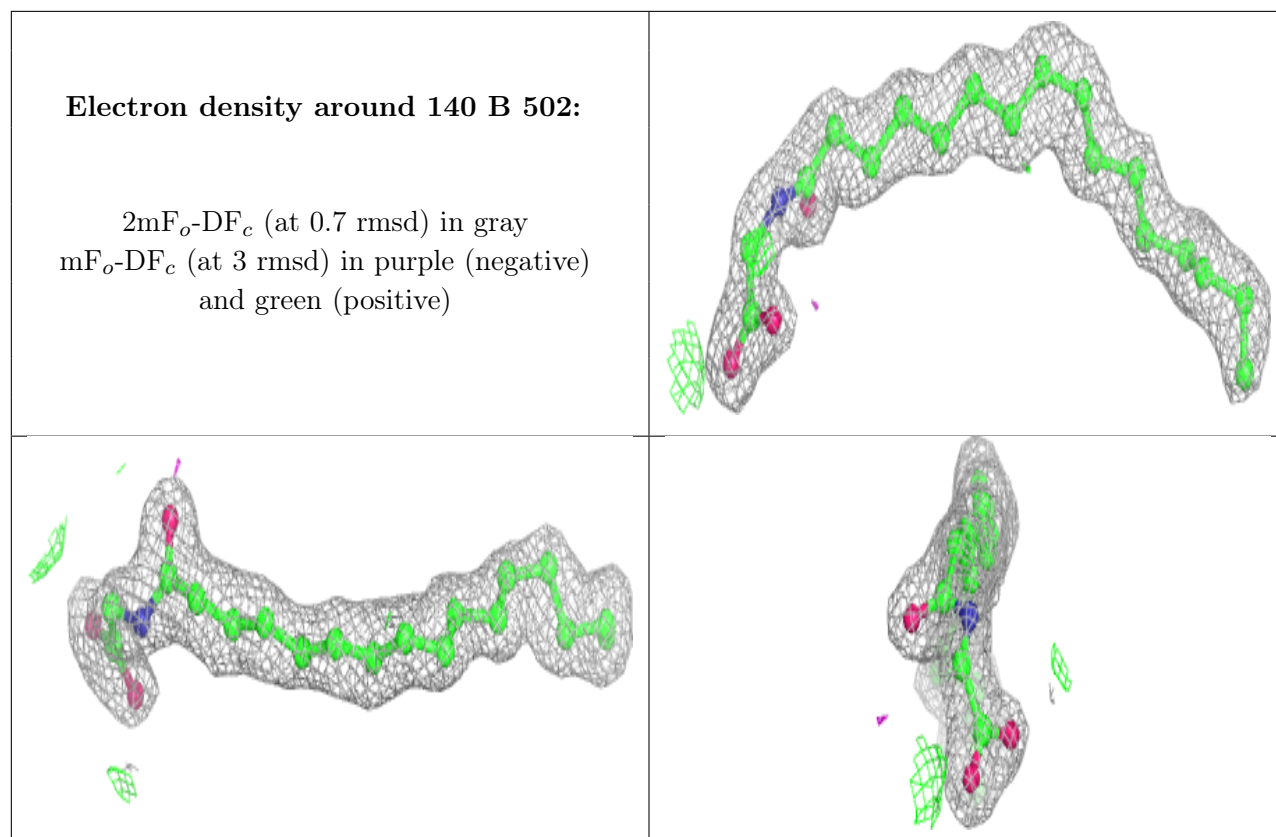
6.4 Ligands [i](#)

In the following table, the Atoms column lists the number of modelled atoms in the group and the number defined in the chemical component dictionary. The B-factors column lists the minimum, median, 95th percentile and maximum values of B factors of atoms in the group. The column labelled 'Q< 0.9' lists the number of atoms with occupancy less than 0.9.

Mol	Type	Chain	Res	Atoms	RSCC	RSR	B-factors(Å ²)	Q<0.9
3	140	A	502	22/22	0.91	0.14	29,33,38,39	0
3	140	B	502	22/22	0.91	0.14	22,27,37,43	0
2	HEM	B	501	43/43	0.97	0.10	15,18,19,22	0
4	RU8	B	503	43/44	0.97	0.14	24,27,29,31	43
4	RU8	A	503	43/44	0.98	0.10	23,30,35,43	43
2	HEM	A	501	43/43	0.98	0.10	15,17,19,26	0

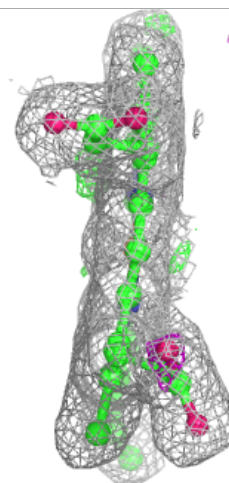
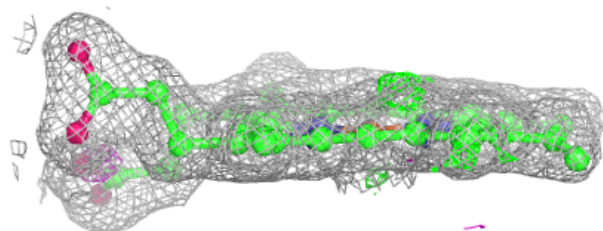
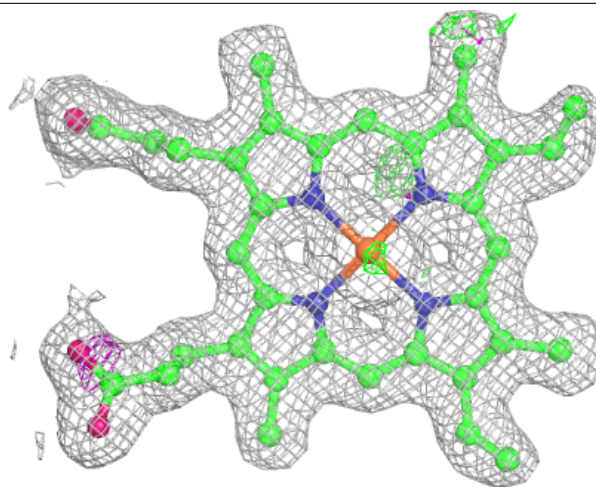
The following is a graphical depiction of the model fit to experimental electron density of all instances of the Ligand of Interest. In addition, ligands with molecular weight > 250 and outliers as shown on the geometry validation Tables will also be included. Each fit is shown from different orientation to approximate a three-dimensional view.





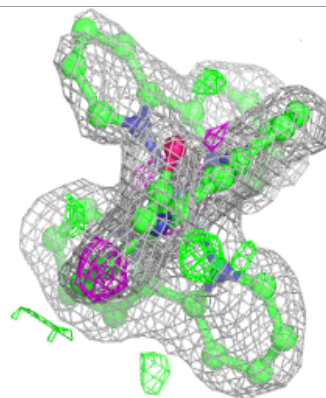
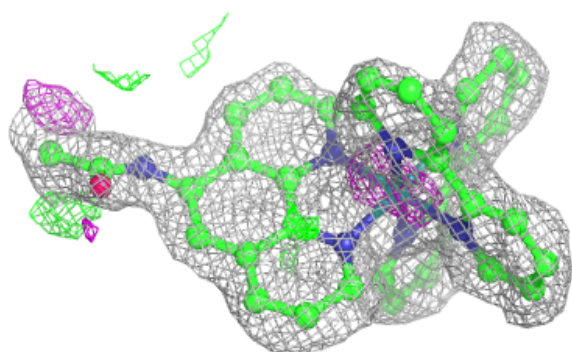
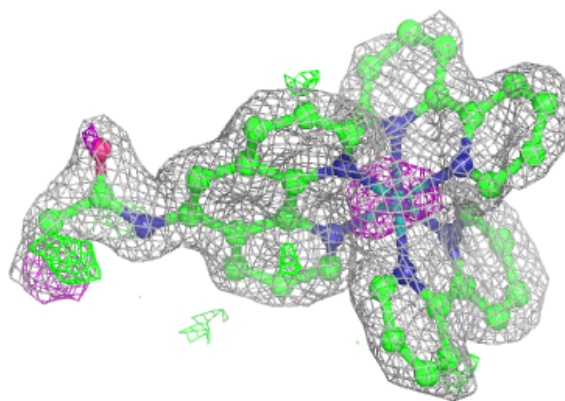
Electron density around HEM B 501:

$2mF_o-DF_c$ (at 0.7 rmsd) in gray
 mF_o-DF_c (at 3 rmsd) in purple (negative)
and green (positive)

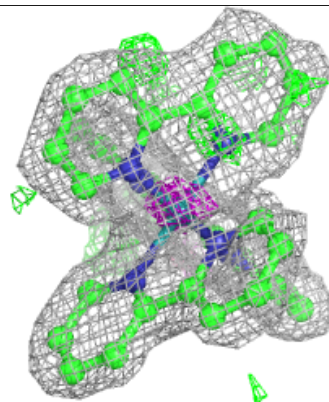
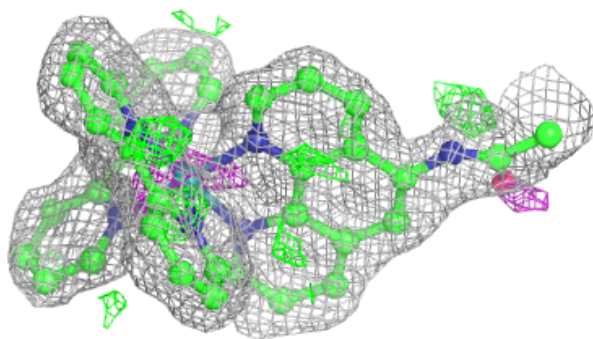
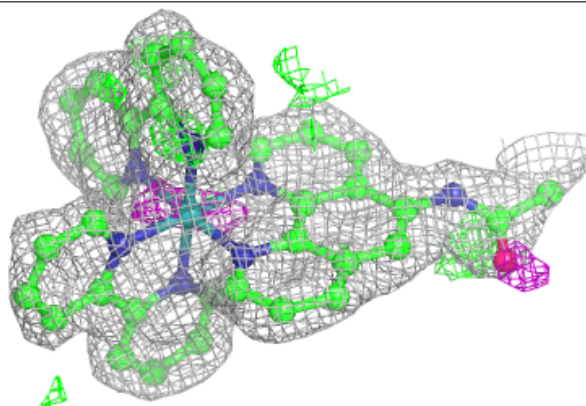


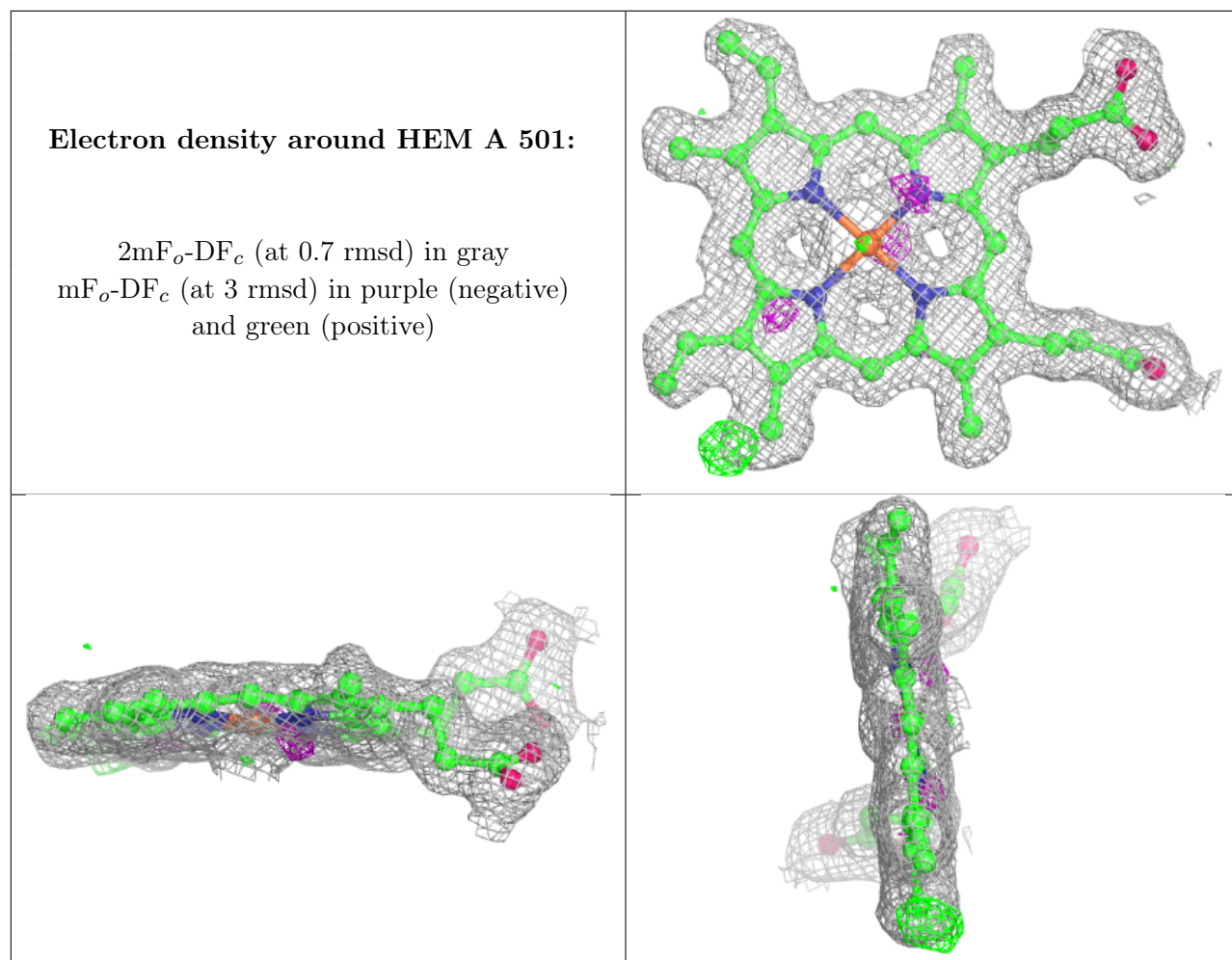
Electron density around RU8 B 503:

$2mF_o-DF_c$ (at 0.7 rmsd) in gray
 mF_o-DF_c (at 3 rmsd) in purple (negative)
and green (positive)

**Electron density around RU8 A 503:**

$2mF_o-DF_c$ (at 0.7 rmsd) in gray
 mF_o-DF_c (at 3 rmsd) in purple (negative)
and green (positive)





6.5 Other polymers [i](#)

There are no such residues in this entry.