



# Full wwPDB X-ray Structure Validation Report ⓘ

Jan 8, 2024 – 04:36 am GMT

PDB ID : 5N6P  
Title : AMPA receptor NTD mutant  
Authors : Rossmann, M.; Krieger, J.M.  
Deposited on : 2017-02-15  
Resolution : 2.80 Å(reported)

This is a Full wwPDB X-ray Structure Validation Report for a publicly released PDB entry.

We welcome your comments at [validation@mail.wwpdb.org](mailto:validation@mail.wwpdb.org)

A user guide is available at

<https://www.wwpdb.org/validation/2017/XrayValidationReportHelp>

with specific help available everywhere you see the ⓘ symbol.

The types of validation reports are described at

<http://www.wwpdb.org/validation/2017/FAQs#types>.

---

The following versions of software and data (see [references ⓘ](#)) were used in the production of this report:

MolProbity : 4.02b-467  
Mogul : 1.8.4, CSD as541be (2020)  
Xtrriage (Phenix) : 1.13  
EDS : 2.36  
Percentile statistics : 20191225.v01 (using entries in the PDB archive December 25th 2019)  
Refmac : 5.8.0158  
CCP4 : 7.0.044 (Gargrove)  
Ideal geometry (proteins) : Engh & Huber (2001)  
Ideal geometry (DNA, RNA) : Parkinson et al. (1996)  
Validation Pipeline (wwPDB-VP) : 2.36

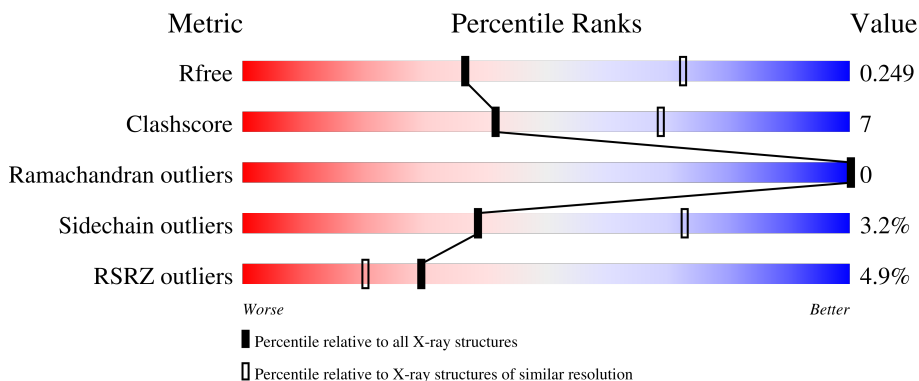
# 1 Overall quality at a glance

The following experimental techniques were used to determine the structure:

*X-RAY DIFFRACTION*

The reported resolution of this entry is 2.80 Å.

Percentile scores (ranging between 0-100) for global validation metrics of the entry are shown in the following graphic. The table shows the number of entries on which the scores are based.



Metric	Whole archive (#Entries)	Similar resolution (#Entries, resolution range(Å))
$R_{free}$	130704	3140 (2.80-2.80)
Clashscore	141614	3569 (2.80-2.80)
Ramachandran outliers	138981	3498 (2.80-2.80)
Sidechain outliers	138945	3500 (2.80-2.80)
RSRZ outliers	127900	3078 (2.80-2.80)

The table below summarises the geometric issues observed across the polymeric chains and their fit to the electron density. The red, orange, yellow and green segments of the lower bar indicate the fraction of residues that contain outliers for  $\geq 3$ , 2, 1 and 0 types of geometric quality criteria respectively. A grey segment represents the fraction of residues that are not modelled. The numeric value for each fraction is indicated below the corresponding segment, with a dot representing fractions  $\leq 5\%$ . The upper red bar (where present) indicates the fraction of residues that have poor fit to the electron density. The numeric value is given above the bar.

Mol	Chain	Length	Quality of chain
1	A	416	 4% 75% 13% 11%

## 2 Entry composition [i](#)

There are 3 unique types of molecules in this entry. The entry contains 2936 atoms, of which 0 are hydrogens and 0 are deuteriums.

In the tables below, the ZeroOcc column contains the number of atoms modelled with zero occupancy, the AltConf column contains the number of residues with at least one atom in alternate conformation and the Trace column contains the number of residues modelled with at most 2 atoms.

- Molecule 1 is a protein called Glutamate receptor 2.

Mol	Chain	Residues	Atoms					ZeroOcc	AltConf	Trace
			Total	C	N	O	S			
1	A	369	2905	1851	488	555	11	0	0	0

There are 42 discrepancies between the modelled and reference sequences:

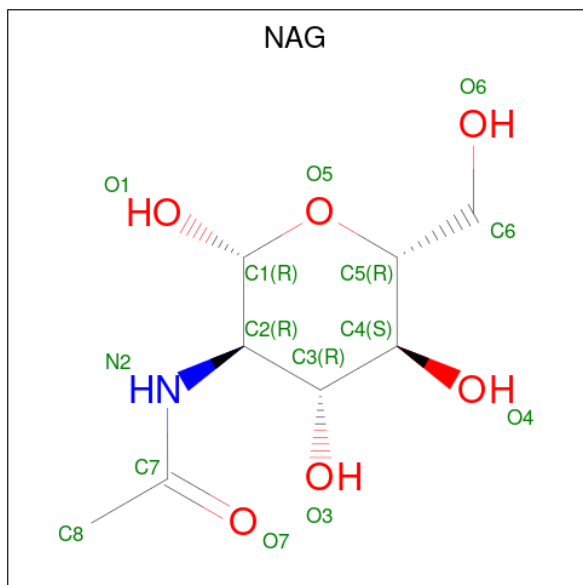
Chain	Residue	Modelled	Actual	Comment	Reference
A	-27	MET	-	initiating methionine	UNP P19491
A	-26	GLY	-	expression tag	UNP P19491
A	-25	ILE	-	expression tag	UNP P19491
A	-24	LEU	-	expression tag	UNP P19491
A	-23	PRO	-	expression tag	UNP P19491
A	-22	SER	-	expression tag	UNP P19491
A	-21	PRO	-	expression tag	UNP P19491
A	-20	GLY	-	expression tag	UNP P19491
A	-19	MET	-	expression tag	UNP P19491
A	-18	PRO	-	expression tag	UNP P19491
A	-17	ALA	-	expression tag	UNP P19491
A	-16	LEU	-	expression tag	UNP P19491
A	-15	LEU	-	expression tag	UNP P19491
A	-14	SER	-	expression tag	UNP P19491
A	-13	LEU	-	expression tag	UNP P19491
A	-12	VAL	-	expression tag	UNP P19491
A	-11	SER	-	expression tag	UNP P19491
A	-10	LEU	-	expression tag	UNP P19491
A	-9	LEU	-	expression tag	UNP P19491
A	-8	SER	-	expression tag	UNP P19491
A	-7	VAL	-	expression tag	UNP P19491
A	-6	LEU	-	expression tag	UNP P19491
A	-5	LEU	-	expression tag	UNP P19491
A	-4	MET	-	expression tag	UNP P19491
A	-3	GLY	-	expression tag	UNP P19491
A	-2	CYS	-	expression tag	UNP P19491
A	-1	VAL	-	expression tag	UNP P19491

*Continued on next page...*

Continued from previous page...

Chain	Residue	Modelled	Actual	Comment	Reference
A	0	ALA	-	expression tag	UNP P19491
A	1	GLU	-	expression tag	UNP P19491
A	2	THR	-	expression tag	UNP P19491
A	3	GLY	-	expression tag	UNP P19491
A	73	CYS	LYS	engineered mutation	UNP P19491
A	134	CYS	ASP	engineered mutation	UNP P19491
A	380	ARG	-	expression tag	UNP P19491
A	381	THR	-	expression tag	UNP P19491
A	382	LYS	-	expression tag	UNP P19491
A	383	HIS	-	expression tag	UNP P19491
A	384	HIS	-	expression tag	UNP P19491
A	385	HIS	-	expression tag	UNP P19491
A	386	HIS	-	expression tag	UNP P19491
A	387	HIS	-	expression tag	UNP P19491
A	388	HIS	-	expression tag	UNP P19491

- Molecule 2 is 2-acetamido-2-deoxy-beta-D-glucopyranose (three-letter code: NAG) (formula:  $C_8H_{15}NO_6$ ).



Mol	Chain	Residues	Atoms				ZeroOcc	AltConf
2	A	1	Total	C	N	O	14	0
			14	8	1	5		
2	A	1	Total	C	N	O	14	0
			14	8	1	5		

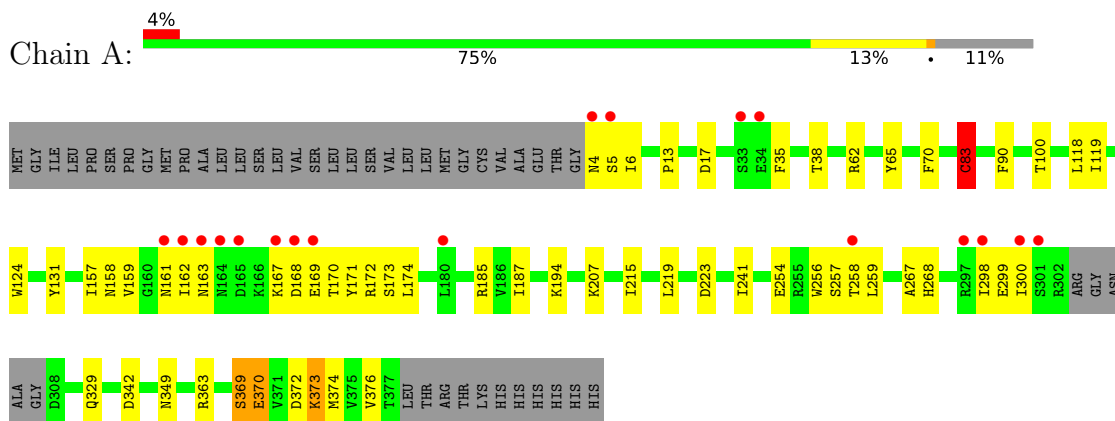
- Molecule 3 is water.

<b>Mol</b>	<b>Chain</b>	<b>Residues</b>	<b>Atoms</b>	<b>ZeroOcc</b>	<b>AltConf</b>
3	A	3	Total O 3 3	0	0

### 3 Residue-property plots [i](#)

These plots are drawn for all protein, RNA, DNA and oligosaccharide chains in the entry. The first graphic for a chain summarises the proportions of the various outlier classes displayed in the second graphic. The second graphic shows the sequence view annotated by issues in geometry and electron density. Residues are color-coded according to the number of geometric quality criteria for which they contain at least one outlier: green = 0, yellow = 1, orange = 2 and red = 3 or more. A red dot above a residue indicates a poor fit to the electron density ( $RSRZ > 2$ ). Stretches of 2 or more consecutive residues without any outlier are shown as a green connector. Residues present in the sample, but not in the model, are shown in grey.

- Molecule 1: Glutamate receptor 2



## 4 Data and refinement statistics

Property	Value	Source
Space group	P 41 21 2	Depositor
Cell constants a, b, c, $\alpha$ , $\beta$ , $\gamma$	94.50Å 94.50Å 160.57Å 90.00° 90.00° 90.00°	Depositor
Resolution (Å)	32.71 – 2.80 30.91 – 2.80	Depositor EDS
% Data completeness (in resolution range)	99.3 (32.71-2.80) 99.4 (30.91-2.80)	Depositor EDS
$R_{merge}$	0.12	Depositor
$R_{sym}$	(Not available)	Depositor
$\langle I/\sigma(I) \rangle$ <sup>1</sup>	1.94 (at 2.81Å)	Xtrriage
Refinement program	REFMAC 5.8.0158	Depositor
R, $R_{free}$	0.206 , 0.249 0.211 , 0.249	Depositor DCC
$R_{free}$ test set	916 reflections (4.96%)	wwPDB-VP
Wilson B-factor (Å <sup>2</sup> )	55.8	Xtrriage
Anisotropy	0.097	Xtrriage
Bulk solvent $k_{sol}$ (e/Å <sup>3</sup> ), $B_{sol}$ (Å <sup>2</sup> )	0.31 , 40.0	EDS
L-test for twinning <sup>2</sup>	$\langle  L  \rangle = 0.48$ , $\langle L^2 \rangle = 0.32$	Xtrriage
Estimated twinning fraction	No twinning to report.	Xtrriage
$F_o, F_c$ correlation	0.93	EDS
Total number of atoms	2936	wwPDB-VP
Average B, all atoms (Å <sup>2</sup> )	62.0	wwPDB-VP

Xtrriage's analysis on translational NCS is as follows: *The largest off-origin peak in the Patterson function is 5.07% of the height of the origin peak. No significant pseudotranslation is detected.*

<sup>1</sup>Intensities estimated from amplitudes.

<sup>2</sup>Theoretical values of  $\langle |L| \rangle$ ,  $\langle L^2 \rangle$  for acentric reflections are 0.5, 0.333 respectively for untwinned datasets, and 0.375, 0.2 for perfectly twinned datasets.

## 5 Model quality [i](#)

### 5.1 Standard geometry [i](#)

Bond lengths and bond angles in the following residue types are not validated in this section: NAG

The Z score for a bond length (or angle) is the number of standard deviations the observed value is removed from the expected value. A bond length (or angle) with  $|Z| > 5$  is considered an outlier worth inspection. RMSZ is the root-mean-square of all Z scores of the bond lengths (or angles).

Mol	Chain	Bond lengths		Bond angles	
		RMSZ	# $ Z  > 5$	RMSZ	# $ Z  > 5$
1	A	0.81	1/2966 (0.0%)	0.91	3/4023 (0.1%)

All (1) bond length outliers are listed below:

Mol	Chain	Res	Type	Atoms	Z	Observed(Å)	Ideal(Å)
1	A	83	CYS	CB-SG	-5.46	1.73	1.81

All (3) bond angle outliers are listed below:

Mol	Chain	Res	Type	Atoms	Z	Observed(°)	Ideal(°)
1	A	62	ARG	NE-CZ-NH1	5.71	123.16	120.30
1	A	363	ARG	NE-CZ-NH1	5.46	123.03	120.30
1	A	223	ASP	CB-CG-OD1	5.42	123.17	118.30

There are no chirality outliers.

There are no planarity outliers.

### 5.2 Too-close contacts [i](#)

In the following table, the Non-H and H(model) columns list the number of non-hydrogen atoms and hydrogen atoms in the chain respectively. The H(added) column lists the number of hydrogen atoms added and optimized by MolProbity. The Clashes column lists the number of clashes within the asymmetric unit, whereas Symm-Clashes lists symmetry-related clashes.

Mol	Chain	Non-H	H(model)	H(added)	Clashes	Symm-Clashes
1	A	2905	0	2802	40	0
2	A	28	0	26	0	0
3	A	3	0	0	0	0
All	All	2936	0	2828	40	0



The all-atom clashscore is defined as the number of clashes found per 1000 atoms (including hydrogen atoms). The all-atom clashscore for this structure is 7.

All (40) close contacts within the same asymmetric unit are listed below, sorted by their clash magnitude.

Atom-1	Atom-2	Interatomic distance (Å)	Clash overlap (Å)
1:A:257:SER:O	1:A:268:HIS:ND1	2.03	0.90
1:A:369:SER:O	1:A:372:ASP:O	1.92	0.86
1:A:158:ASN:OD1	1:A:161:ASN:HB2	1.87	0.74
1:A:6:ILE:HG23	1:A:65:TYR:CD2	2.24	0.72
1:A:299:GLU:CB	1:A:300:ILE:HA	2.18	0.70
1:A:5:SER:HB2	1:A:38:THR:HG23	1.83	0.59
1:A:257:SER:HA	1:A:268:HIS:HA	1.84	0.59
1:A:4:ASN:O	1:A:35:PHE:HB2	2.02	0.58
1:A:157:ILE:HD13	1:A:174:LEU:HD12	1.86	0.57
1:A:131:TYR:O	1:A:159:VAL:HG22	2.04	0.57
1:A:167:LYS:O	1:A:171:TYR:N	2.39	0.52
1:A:342:ASP:OD1	1:A:342:ASP:C	2.49	0.50
1:A:118:LEU:HA	1:A:374:MET:HE1	1.94	0.50
1:A:118:LEU:HD23	1:A:215:ILE:HD13	1.94	0.49
1:A:256:TRP:HA	1:A:259:LEU:CD1	2.42	0.49
1:A:169:GLU:O	1:A:173:SER:CB	2.61	0.48
1:A:299:GLU:CB	1:A:300:ILE:CA	2.90	0.47
1:A:157:ILE:HD13	1:A:174:LEU:CD1	2.45	0.47
1:A:256:TRP:HA	1:A:259:LEU:HD12	1.97	0.47
1:A:13:PRO:HD3	1:A:70:PHE:CD1	2.50	0.46
1:A:169:GLU:O	1:A:173:SER:HB2	2.14	0.46
1:A:373:LYS:N	1:A:373:LYS:HE3	2.31	0.46
1:A:157:ILE:HG21	1:A:174:LEU:HD13	1.98	0.45
1:A:267:ALA:O	1:A:268:HIS:HB3	2.16	0.45
1:A:369:SER:OG	1:A:372:ASP:N	2.40	0.45
1:A:171:TYR:OH	1:A:194:LYS:HE3	2.15	0.45
1:A:219:LEU:HB3	1:A:241:ILE:HG12	1.99	0.45
1:A:254:GLU:O	1:A:258:THR:HG23	2.17	0.45
1:A:83:CYS:SG	1:A:90:PHE:HB2	2.58	0.44
1:A:298:ILE:HG22	1:A:299:GLU:N	2.34	0.43
1:A:349:ASN:N	1:A:370:GLU:OE1	2.38	0.43
1:A:124:TRP:CE2	1:A:185:ARG:CG	3.02	0.42
1:A:119:ILE:HD11	1:A:187:ILE:CD1	2.49	0.42
1:A:168:ASP:O	1:A:172:ARG:HB3	2.19	0.42
1:A:158:ASN:OD1	1:A:161:ASN:N	2.44	0.42
1:A:157:ILE:HG21	1:A:174:LEU:CD1	2.50	0.41
1:A:373:LYS:N	1:A:373:LYS:CE	2.83	0.41

*Continued on next page...*

*Continued from previous page...*

Atom-1	Atom-2	Interatomic distance (Å)	Clash overlap (Å)
1:A:158:ASN:OD1	1:A:161:ASN:CB	2.65	0.41
1:A:162:ILE:CD1	1:A:170:THR:HG21	2.51	0.40
1:A:162:ILE:HG12	1:A:170:THR:HG21	2.02	0.40

There are no symmetry-related clashes.

### 5.3 Torsion angles [i](#)

#### 5.3.1 Protein backbone [i](#)

In the following table, the Percentiles column shows the percent Ramachandran outliers of the chain as a percentile score with respect to all X-ray entries followed by that with respect to entries of similar resolution.

The Analysed column shows the number of residues for which the backbone conformation was analysed, and the total number of residues.

Mol	Chain	Analysed	Favoured	Allowed	Outliers	Percentiles
1	A	365/416 (88%)	345 (94%)	20 (6%)	0	100 100

There are no Ramachandran outliers to report.

#### 5.3.2 Protein sidechains [i](#)

In the following table, the Percentiles column shows the percent sidechain outliers of the chain as a percentile score with respect to all X-ray entries followed by that with respect to entries of similar resolution.

The Analysed column shows the number of residues for which the sidechain conformation was analysed, and the total number of residues.

Mol	Chain	Analysed	Rotameric	Outliers	Percentiles
1	A	312/359 (87%)	302 (97%)	10 (3%)	39 73

All (10) residues with a non-rotameric sidechain are listed below:

Mol	Chain	Res	Type
1	A	17	ASP
1	A	83	CYS
1	A	100	THR

*Continued on next page...*

*Continued from previous page...*

Mol	Chain	Res	Type
1	A	163	ASN
1	A	207	LYS
1	A	329	GLN
1	A	369	SER
1	A	370	GLU
1	A	373	LYS
1	A	376	VAL

Sometimes sidechains can be flipped to improve hydrogen bonding and reduce clashes. There are no such sidechains identified.

### 5.3.3 RNA [i](#)

There are no RNA molecules in this entry.

### 5.4 Non-standard residues in protein, DNA, RNA chains [i](#)

There are no non-standard protein/DNA/RNA residues in this entry.

### 5.5 Carbohydrates [i](#)

There are no monosaccharides in this entry.

### 5.6 Ligand geometry [i](#)

2 ligands are modelled in this entry.

In the following table, the Counts columns list the number of bonds (or angles) for which Mogul statistics could be retrieved, the number of bonds (or angles) that are observed in the model and the number of bonds (or angles) that are defined in the Chemical Component Dictionary. The Link column lists molecule types, if any, to which the group is linked. The Z score for a bond length (or angle) is the number of standard deviations the observed value is removed from the expected value. A bond length (or angle) with  $|Z| > 2$  is considered an outlier worth inspection. RMSZ is the root-mean-square of all Z scores of the bond lengths (or angles).

Mol	Type	Chain	Res	Link	Bond lengths			Bond angles		
					Counts	RMSZ	$\# Z  > 2$	Counts	RMSZ	$\# Z  > 2$
2	NAG	A	402	1	14,14,15	0.31	0	17,19,21	0.43	0
2	NAG	A	401	1	14,14,15	0.32	0	17,19,21	0.64	0

In the following table, the Chirals column lists the number of chiral outliers, the number of chiral centers analysed, the number of these observed in the model and the number defined in the Chemical Component Dictionary. Similar counts are reported in the Torsion and Rings columns. '-' means no outliers of that kind were identified.

Mol	Type	Chain	Res	Link	Chirals	Torsions	Rings
2	NAG	A	402	1	-	2/6/23/26	0/1/1/1
2	NAG	A	401	1	-	2/6/23/26	0/1/1/1

There are no bond length outliers.

There are no bond angle outliers.

There are no chirality outliers.

All (4) torsion outliers are listed below:

Mol	Chain	Res	Type	Atoms
2	A	402	NAG	C4-C5-C6-O6
2	A	401	NAG	O5-C5-C6-O6
2	A	401	NAG	C4-C5-C6-O6
2	A	402	NAG	O5-C5-C6-O6

There are no ring outliers.

No monomer is involved in short contacts.

## 5.7 Other polymers [i](#)

There are no such residues in this entry.

## 5.8 Polymer linkage issues [i](#)

There are no chain breaks in this entry.

## 6 Fit of model and data [i](#)

### 6.1 Protein, DNA and RNA chains [i](#)

In the following table, the column labelled ‘#RSRZ > 2’ contains the number (and percentage) of RSRZ outliers, followed by percent RSRZ outliers for the chain as percentile scores relative to all X-ray entries and entries of similar resolution. The OWAB column contains the minimum, median, 95<sup>th</sup> percentile and maximum values of the occupancy-weighted average B-factor per residue. The column labelled ‘Q < 0.9’ lists the number of (and percentage) of residues with an average occupancy less than 0.9.

Mol	Chain	Analysed	<RSRZ>	#RSRZ>2	OWAB(Å <sup>2</sup> )	Q<0.9
1	A	369/416 (88%)	-0.17	18 (4%) 29 20	26, 54, 116, 166	0

All (18) RSRZ outliers are listed below:

Mol	Chain	Res	Type	RSRZ
1	A	163	ASN	6.6
1	A	168	ASP	5.2
1	A	164	ASN	4.3
1	A	169	GLU	4.2
1	A	161	ASN	3.8
1	A	4	ASN	3.8
1	A	300	ILE	3.7
1	A	165	ASP	3.5
1	A	33	SER	3.3
1	A	297	ARG	3.2
1	A	180	LEU	3.0
1	A	298	ILE	2.6
1	A	301	SER	2.5
1	A	162	ILE	2.5
1	A	5	SER	2.2
1	A	258	THR	2.1
1	A	167	LYS	2.1
1	A	34	GLU	2.0

### 6.2 Non-standard residues in protein, DNA, RNA chains [i](#)

There are no non-standard protein/DNA/RNA residues in this entry.

### 6.3 Carbohydrates [i](#)

There are no monosaccharides in this entry.

### 6.4 Ligands [i](#)

LIGAND-RSR INFOmissingINFO

### 6.5 Other polymers [i](#)

There are no such residues in this entry.