



Full wwPDB X-ray Structure Validation Report ⓘ

Jun 24, 2024 – 11:32 PM EDT

PDB ID : 5O5T
Title : X-ray structure of human glutamate carboxypeptidase II (GCPII) in complex with a urea based inhibitor PSMA 1007
Authors : Barinka, C.; Novakova, Z.; Motlova, L.
Deposited on : 2017-06-02
Resolution : 1.43 Å(reported)

This is a Full wwPDB X-ray Structure Validation Report for a publicly released PDB entry.

We welcome your comments at validation@mail.wwpdb.org

A user guide is available at

<https://www.wwpdb.org/validation/2017/XrayValidationReportHelp>

with specific help available everywhere you see the ⓘ symbol.

The types of validation reports are described at

<http://www.wwpdb.org/validation/2017/FAQs#types>.

The following versions of software and data (see [references ⓘ](#)) were used in the production of this report:

MolProbity : 4.02b-467
Mogul : 1.8.5 (274361), CSD as541be (2020)
Xtriage (Phenix) : 1.13
EDS : 2.37.1
buster-report : 1.1.7 (2018)
Percentile statistics : 20191225.v01 (using entries in the PDB archive December 25th 2019)
Refmac : 5.8.0158
CCP4 : 7.0.044 (Gargrove)
Ideal geometry (proteins) : Engh & Huber (2001)
Ideal geometry (DNA, RNA) : Parkinson et al. (1996)
Validation Pipeline (wwPDB-VP) : 2.37.1

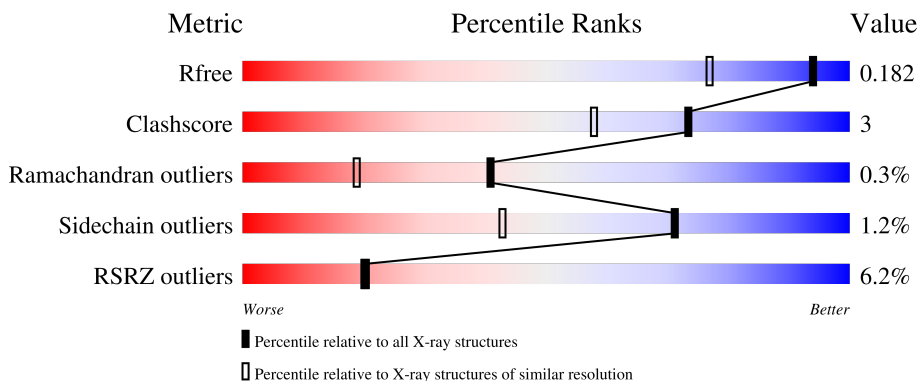
1 Overall quality at a glance i

The following experimental techniques were used to determine the structure:

X-RAY DIFFRACTION

The reported resolution of this entry is 1.43 Å.

Percentile scores (ranging between 0-100) for global validation metrics of the entry are shown in the following graphic. The table shows the number of entries on which the scores are based.



Metric	Whole archive (#Entries)	Similar resolution (#Entries, resolution range(Å))
R_{free}	130704	2021 (1.46-1.42)
Clashscore	141614	2086 (1.46-1.42)
Ramachandran outliers	138981	2047 (1.46-1.42)
Sidechain outliers	138945	2047 (1.46-1.42)
RSRZ outliers	127900	1993 (1.46-1.42)

The table below summarises the geometric issues observed across the polymeric chains and their fit to the electron density. The red, orange, yellow and green segments of the lower bar indicate the fraction of residues that contain outliers for ≥ 3 , 2, 1 and 0 types of geometric quality criteria respectively. A grey segment represents the fraction of residues that are not modelled. The numeric value for each fraction is indicated below the corresponding segment, with a dot representing fractions $\leq 5\%$. The upper red bar (where present) indicates the fraction of residues that have poor fit to the electron density. The numeric value is given above the bar.

Mol	Chain	Length	Quality of chain
1	A	707	<div style="display: flex; align-items: center;"> <div style="width: 6%; height: 10px; background-color: red; margin-right: 5px;"></div> <div style="width: 90%; height: 10px; background-color: green; margin-right: 5px;"></div> <div style="width: 8%; height: 10px; background-color: orange; margin-right: 5px;"></div> <div style="width: 2%; height: 10px; background-color: grey;"></div> </div> <p style="text-align: center;">6% 90% 8% .</p>
2	B	2	<div style="width: 100%; height: 10px; background-color: yellow;"></div> <p style="text-align: center;">100%</p>
3	C	3	<div style="width: 100%; height: 10px; background-color: yellow;"></div> <p style="text-align: center;">100%</p>
4	D	5	<div style="display: flex; align-items: center;"> <div style="width: 20%; height: 10px; background-color: green; margin-right: 5px;"></div> <div style="width: 60%; height: 10px; background-color: yellow; margin-right: 5px;"></div> <div style="width: 20%; height: 10px; background-color: orange;"></div> </div> <p style="text-align: center;">20% 60% 20%</p>

The following table lists non-polymeric compounds, carbohydrate monomers and non-standard

residues in protein, DNA, RNA chains that are outliers for geometric or electron-density-fit criteria:

Mol	Type	Chain	Res	Chirality	Geometry	Clashes	Electron density
3	BMA	C	3	-	-	-	X

2 Entry composition [i](#)

There are 10 unique types of molecules in this entry. The entry contains 6676 atoms, of which 0 are hydrogens and 0 are deuteriums.

In the tables below, the ZeroOcc column contains the number of atoms modelled with zero occupancy, the AltConf column contains the number of residues with at least one atom in alternate conformation and the Trace column contains the number of residues modelled with at most 2 atoms.

- Molecule 1 is a protein called Glutamate carboxypeptidase 2.

Mol	Chain	Residues	Atoms					ZeroOcc	AltConf	Trace
			Total	C	N	O	S			
1	A	696	5810	3726	976	1087	21	0	45	0

- Molecule 2 is an oligosaccharide called 2-acetamido-2-deoxy-beta-D-glucopyranose-(1-4)-2-acetamido-2-deoxy-beta-D-glucopyranose.



Mol	Chain	Residues	Atoms				ZeroOcc	AltConf	Trace
			Total	C	N	O			
2	B	2	28	16	2	10	0	0	0

- Molecule 3 is an oligosaccharide called beta-D-mannopyranose-(1-4)-2-acetamido-2-deoxy-beta-D-glucopyranose-(1-4)-2-acetamido-2-deoxy-beta-D-glucopyranose.



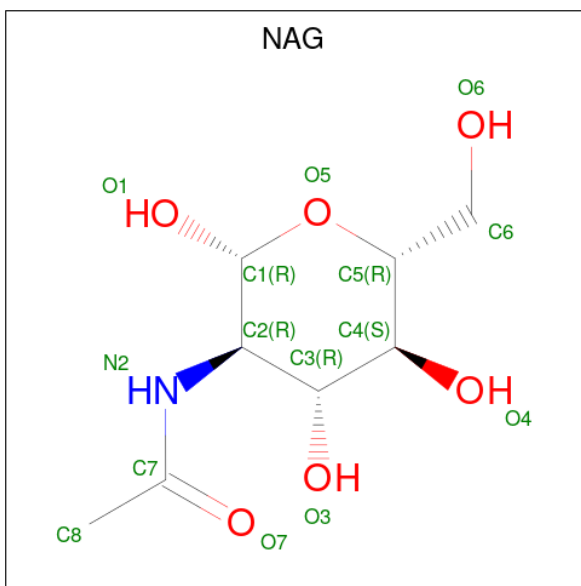
Mol	Chain	Residues	Atoms				ZeroOcc	AltConf	Trace
			Total	C	N	O			
3	C	3	39	22	2	15	0	0	0

- Molecule 4 is an oligosaccharide called alpha-D-mannopyranose-(1-3)-[alpha-D-mannopyranose-(1-6)]beta-D-mannopyranose-(1-4)-2-acetamido-2-deoxy-beta-D-glucopyranose-(1-4)-2-acetamido-2-deoxy-beta-D-glucopyranose.



Mol	Chain	Residues	Atoms				ZeroOcc	AltConf	Trace
			Total	C	N	O			
4	D	5	61	34	2	25	0	0	0

- Molecule 5 is 2-acetamido-2-deoxy-beta-D-glucopyranose (three-letter code: NAG) (formula: $C_8H_{15}NO_6$).



Mol	Chain	Residues	Atoms				ZeroOcc	AltConf
			Total	C	N	O		
5	A	1	14	8	1	5	0	0
5	A	1	14	8	1	5	0	0
5	A	1	14	8	1	5	0	0
5	A	1	14	8	1	5	0	0

- Molecule 6 is ZINC ION (three-letter code: ZN) (formula: Zn).

Mol	Chain	Residues	Atoms		ZeroOcc	AltConf
			Total	Zn		
6	A	2	2	2	0	0

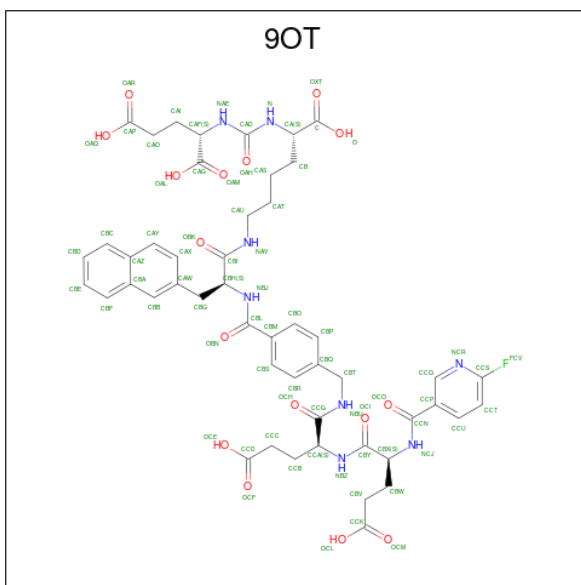
- Molecule 7 is CALCIUM ION (three-letter code: CA) (formula: Ca).

Mol	Chain	Residues	Atoms	ZeroOcc	AltConf
7	A	1	Total Ca 1 1	0	0

- Molecule 8 is CHLORIDE ION (three-letter code: CL) (formula: Cl).

Mol	Chain	Residues	Atoms	ZeroOcc	AltConf
8	A	1	Total Cl 1 1	0	0

- Molecule 9 is (2 {S})-2-[[[(2 {S})-6-[[[(2 {S})-2-[[4-[[[(2 {S})-2-[[[(2 {S})-2-[(6-fluoranylpyridin-3-yl)carbonylamino]-5-oxidanyl-5-oxidanylidene-pentanoyl]amino]-5-oxidanyl-5-oxidanylidene-pentanoyl]amino]methyl]phenyl]carbonylamino]-3-naphthalen-2-yl-propanoyl]amino]-1-oxidanyl-1-oxidanylidene-hexan-2-yl]carbonylamino]pentanedioic acid (three-letter code: 9OT) (formula: C₄₉H₅₅FN₈O₁₆).



Mol	Chain	Residues	Atoms	ZeroOcc	AltConf
9	A	1	Total C F N O 74 49 1 8 16	0	0

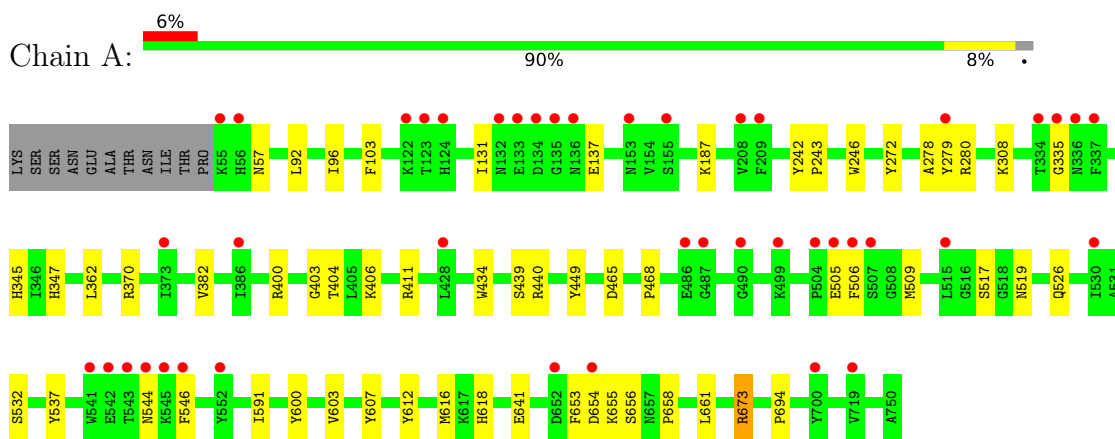
- Molecule 10 is water.

Mol	Chain	Residues	Atoms	ZeroOcc	AltConf
10	A	603	Total O 604 604	0	4

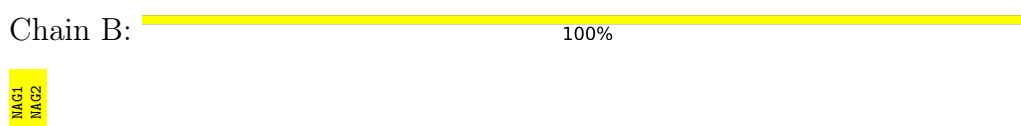
3 Residue-property plots [i](#)

These plots are drawn for all protein, RNA, DNA and oligosaccharide chains in the entry. The first graphic for a chain summarises the proportions of the various outlier classes displayed in the second graphic. The second graphic shows the sequence view annotated by issues in geometry and electron density. Residues are color-coded according to the number of geometric quality criteria for which they contain at least one outlier: green = 0, yellow = 1, orange = 2 and red = 3 or more. A red dot above a residue indicates a poor fit to the electron density ($RSRZ > 2$). Stretches of 2 or more consecutive residues without any outlier are shown as a green connector. Residues present in the sample, but not in the model, are shown in grey.

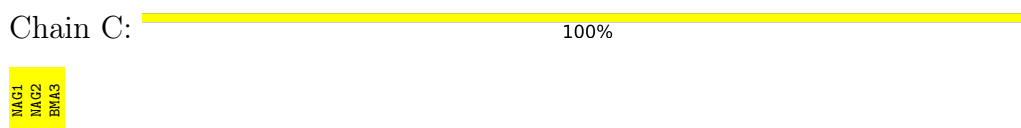
- Molecule 1: Glutamate carboxypeptidase 2



- Molecule 2: 2-acetamido-2-deoxy-beta-D-glucopyranose-(1-4)-2-acetamido-2-deoxy-beta-D-glucopyranose



- Molecule 3: beta-D-mannopyranose-(1-4)-2-acetamido-2-deoxy-beta-D-glucopyranose-(1-4)-2-acetamido-2-deoxy-beta-D-glucopyranose



- Molecule 4: alpha-D-mannopyranose-(1-3)-[alpha-D-mannopyranose-(1-6)]beta-D-mannopyranose-(1-4)-2-acetamido-2-deoxy-beta-D-glucopyranose-(1-4)-2-acetamido-2-deoxy-beta-D-glucopyranose



4 Data and refinement statistics

Property	Value	Source
Space group	I 2 2 2	Depositor
Cell constants a, b, c, α , β , γ	101.66Å 130.16Å 159.16Å 90.00° 90.00° 90.00°	Depositor
Resolution (Å)	45.38 – 1.43 38.12 – 1.43	Depositor EDS
% Data completeness (in resolution range)	94.7 (45.38-1.43) 94.8 (38.12-1.43)	Depositor EDS
R_{merge}	0.03	Depositor
R_{sym}	(Not available)	Depositor
$\langle I/\sigma(I) \rangle$ ¹	1.75 (at 1.43Å)	Xtrriage
Refinement program	REFMAC 5.8.0135	Depositor
R, R_{free}	0.138 , 0.173 0.147 , 0.182	Depositor DCC
R_{free} test set	5602 reflections (3.06%)	wwPDB-VP
Wilson B-factor (Å ²)	18.8	Xtrriage
Anisotropy	0.675	Xtrriage
Bulk solvent k_{sol} (e/Å ³), B_{sol} (Å ²)	0.35 , 51.1	EDS
L-test for twinning ²	$\langle L \rangle = 0.48$, $\langle L^2 \rangle = 0.32$	Xtrriage
Estimated twinning fraction	No twinning to report.	Xtrriage
F_o, F_c correlation	0.98	EDS
Total number of atoms	6676	wwPDB-VP
Average B, all atoms (Å ²)	32.0	wwPDB-VP

Xtrriage's analysis on translational NCS is as follows: *The largest off-origin peak in the Patterson function is 3.59% of the height of the origin peak. No significant pseudotranslation is detected.*

¹Intensities estimated from amplitudes.

²Theoretical values of $\langle |L| \rangle$, $\langle L^2 \rangle$ for acentric reflections are 0.5, 0.333 respectively for untwinned datasets, and 0.375, 0.2 for perfectly twinned datasets.

5 Model quality [i](#)

5.1 Standard geometry [i](#)

Bond lengths and bond angles in the following residue types are not validated in this section: MAN, CL, CA, 9OT, BMA, ZN, NAG

The Z score for a bond length (or angle) is the number of standard deviations the observed value is removed from the expected value. A bond length (or angle) with $|Z| > 5$ is considered an outlier worth inspection. RMSZ is the root-mean-square of all Z scores of the bond lengths (or angles).

Mol	Chain	Bond lengths		Bond angles	
		RMSZ	# Z >5	RMSZ	# Z >5
1	A	0.97	4/6061 (0.1%)	0.91	5/8208 (0.1%)

All (4) bond length outliers are listed below:

Mol	Chain	Res	Type	Atoms	Z	Observed(Å)	Ideal(Å)
1	A	272	TYR	CE1-CZ	8.21	1.49	1.38
1	A	439	SER	CA-CB	5.39	1.61	1.52
1	A	434	TRP	CE3-CZ3	5.32	1.47	1.38
1	A	370	ARG	NE-CZ	5.03	1.39	1.33

All (5) bond angle outliers are listed below:

Mol	Chain	Res	Type	Atoms	Z	Observed(°)	Ideal(°)
1	A	673	ARG	NE-CZ-NH2	-12.68	113.96	120.30
1	A	673	ARG	NE-CZ-NH1	9.34	124.97	120.30
1	A	440	ARG	NE-CZ-NH2	-8.99	115.81	120.30
1	A	411	ARG	NE-CZ-NH2	-6.75	116.92	120.30
1	A	465	ASP	CB-CG-OD1	5.80	123.52	118.30

There are no chirality outliers.

There are no planarity outliers.

5.2 Too-close contacts [i](#)

In the following table, the Non-H and H(model) columns list the number of non-hydrogen atoms and hydrogen atoms in the chain respectively. The H(added) column lists the number of hydrogen atoms added and optimized by MolProbity. The Clashes column lists the number of clashes within the asymmetric unit, whereas Symm-Clashes lists symmetry-related clashes.

Mol	Chain	Non-H	H(model)	H(added)	Clashes	Symm-Clashes
1	A	5810	0	5664	39	0
2	B	28	0	25	0	0
3	C	39	0	34	0	0
4	D	61	0	52	0	1
5	A	56	0	52	1	0
6	A	2	0	0	0	0
7	A	1	0	0	0	0
8	A	1	0	0	0	0
9	A	74	0	0	0	0
10	A	604	0	0	6	2
All	All	6676	0	5827	39	2

The all-atom clashscore is defined as the number of clashes found per 1000 atoms (including hydrogen atoms). The all-atom clashscore for this structure is 3.

All (39) close contacts within the same asymmetric unit are listed below, sorted by their clash magnitude.

Atom-1	Atom-2	Interatomic distance (Å)	Clash overlap (Å)
1:A:591:ILE:HG21	1:A:655[B]:LYS:HD3	1.56	0.87
1:A:603[B]:VAL:HG13	1:A:607:TYR:CZ	2.24	0.72
1:A:603[B]:VAL:HG13	1:A:607:TYR:CE2	2.25	0.71
1:A:653[B]:PHE:CD2	1:A:654[B]:ASP:N	2.62	0.67
1:A:655[B]:LYS:O	1:A:656[B]:SER:HB2	1.96	0.65
1:A:400:ARG:O	1:A:404[B]:THR:HG23	1.97	0.64
1:A:279[B]:TYR:C	1:A:279[B]:TYR:CD1	2.71	0.62
1:A:131:ILE:HG22	1:A:137:GLU:HG2	1.81	0.62
1:A:603[B]:VAL:CG1	1:A:607:TYR:CE2	2.84	0.60
1:A:131:ILE:CG2	1:A:137:GLU:HG2	2.32	0.60
1:A:347:HIS:HE1	10:A:1392:HOH:O	1.91	0.51
1:A:544:ASN:HB3	1:A:546:PHE:CE2	2.46	0.51
1:A:618:HIS:HD2	10:A:1353:HOH:O	1.92	0.51
1:A:653[B]:PHE:CG	1:A:654[B]:ASP:N	2.79	0.51
1:A:278:ALA:HB3	1:A:280[B]:ARG:CZ	2.42	0.50
1:A:92:LEU:O	1:A:96[B]:ILE:HG12	2.12	0.48
1:A:279[B]:TYR:CD1	1:A:279[B]:TYR:O	2.67	0.48
1:A:661[B]:LEU:HD23	10:A:1296:HOH:O	2.13	0.47
1:A:653[B]:PHE:O	1:A:654[B]:ASP:HB2	2.15	0.46
1:A:278:ALA:HB3	1:A:280[B]:ARG:NH1	2.30	0.46
1:A:137:GLU:OE2	1:A:345:HIS:CE1	2.70	0.45
1:A:279[B]:TYR:O	1:A:279[B]:TYR:HD1	2.00	0.45
1:A:347:HIS:CE1	10:A:1392:HOH:O	2.66	0.45
1:A:242:TYR:CG	1:A:243:PRO:HA	2.52	0.45

Continued on next page...

Continued from previous page...

Atom-1	Atom-2	Interatomic distance (Å)	Clash overlap (Å)
1:A:468:PRO:CG	1:A:603[A]:VAL:HG21	2.46	0.45
1:A:655[B]:LYS:HB2	1:A:656[B]:SER:H	1.39	0.44
1:A:506:PHE:HB2	1:A:509:MET:HG3	1.98	0.44
1:A:517:SER:HB2	1:A:694:PRO:HG3	1.98	0.44
1:A:641:GLU:HG3	10:A:1160:HOH:O	2.18	0.43
1:A:505[B]:GLU:HB3	1:A:506:PHE:CD2	2.53	0.43
1:A:653[B]:PHE:CD2	1:A:654[B]:ASP:CA	3.02	0.42
1:A:612:TYR:CZ	1:A:616:MET:HG3	2.54	0.42
1:A:656[B]:SER:O	1:A:658[B]:PRO:HD3	2.20	0.42
1:A:603[B]:VAL:CG1	1:A:607:TYR:CZ	3.01	0.42
1:A:362:LEU:HD11	1:A:406:LYS:HG3	2.01	0.41
1:A:449:TYR:O	1:A:532:SER:HA	2.20	0.41
1:A:103:PHE:O	1:A:403:GLY:HA3	2.20	0.41
1:A:246:TRP:CD1	5:A:806:NAG:H83	2.56	0.41
1:A:308:LYS:HB2	10:A:946:HOH:O	2.22	0.40

All (2) symmetry-related close contacts are listed below. The label for Atom-2 includes the symmetry operator and encoded unit-cell translations to be applied.

Atom-1	Atom-2	Interatomic distance (Å)	Clash overlap (Å)
4:D:5:MAN:O6	10:A:1090:HOH:O[2_565]	1.03	1.17
10:A:1352:HOH:O	10:A:1357:HOH:O[2_565]	2.01	0.19

5.3 Torsion angles [i](#)

5.3.1 Protein backbone [i](#)

In the following table, the Percentiles column shows the percent Ramachandran outliers of the chain as a percentile score with respect to all X-ray entries followed by that with respect to entries of similar resolution.

The Analysed column shows the number of residues for which the backbone conformation was analysed, and the total number of residues.

Mol	Chain	Analysed	Favoured	Allowed	Outliers	Percentiles
1	A	739/707 (104%)	718 (97%)	19 (3%)	2 (0%)	41 19

All (2) Ramachandran outliers are listed below:

Mol	Chain	Res	Type
1	A	382	VAL
1	A	335	GLY

5.3.2 Protein sidechains [i](#)

In the following table, the Percentiles column shows the percent sidechain outliers of the chain as a percentile score with respect to all X-ray entries followed by that with respect to entries of similar resolution.

The Analysed column shows the number of residues for which the sidechain conformation was analysed, and the total number of residues.

Mol	Chain	Analysed	Rotameric	Outliers	Percentiles
1	A	638/603 (106%)	630 (99%)	8 (1%)	69 39

All (8) residues with a non-rotameric sidechain are listed below:

Mol	Chain	Res	Type
1	A	57	ASN
1	A	187	LYS
1	A	519	ASN
1	A	526[A]	GLN
1	A	526[B]	GLN
1	A	537	TYR
1	A	600	TYR
1	A	673	ARG

Sometimes sidechains can be flipped to improve hydrogen bonding and reduce clashes. All (7) such sidechains are listed below:

Mol	Chain	Res	Type
1	A	57	ASN
1	A	124	HIS
1	A	216	ASN
1	A	303	GLN
1	A	345	HIS
1	A	347	HIS
1	A	618	HIS

5.3.3 RNA [i](#)

There are no RNA molecules in this entry.

5.4 Non-standard residues in protein, DNA, RNA chains [i](#)

There are no non-standard protein/DNA/RNA residues in this entry.

5.5 Carbohydrates [i](#)

10 monosaccharides are modelled in this entry.

In the following table, the Counts columns list the number of bonds (or angles) for which Mogul statistics could be retrieved, the number of bonds (or angles) that are observed in the model and the number of bonds (or angles) that are defined in the Chemical Component Dictionary. The Link column lists molecule types, if any, to which the group is linked. The Z score for a bond length (or angle) is the number of standard deviations the observed value is removed from the expected value. A bond length (or angle) with $|Z| > 2$ is considered an outlier worth inspection. RMSZ is the root-mean-square of all Z scores of the bond lengths (or angles).

Mol	Type	Chain	Res	Link	Bond lengths			Bond angles		
					Counts	RMSZ	# Z > 2	Counts	RMSZ	# Z > 2
2	NAG	B	1	2,1	14,14,15	0.43	0	17,19,21	1.02	1 (5%)
2	NAG	B	2	2	14,14,15	0.66	0	17,19,21	1.19	2 (11%)
3	NAG	C	1	3,1	14,14,15	1.06	1 (7%)	17,19,21	1.39	3 (17%)
3	NAG	C	2	3	14,14,15	0.42	0	17,19,21	0.92	1 (5%)
3	BMA	C	3	3	11,11,12	0.63	0	15,15,17	1.06	1 (6%)
4	NAG	D	1	4,1	14,14,15	0.54	0	17,19,21	1.91	4 (23%)
4	NAG	D	2	4	14,14,15	0.54	0	17,19,21	1.22	2 (11%)
4	BMA	D	3	4	11,11,12	0.41	0	15,15,17	0.82	0
4	MAN	D	4	4	11,11,12	0.80	0	15,15,17	1.10	2 (13%)
4	MAN	D	5	4	11,11,12	0.58	0	15,15,17	1.14	1 (6%)

In the following table, the Chirals column lists the number of chiral outliers, the number of chiral centers analysed, the number of these observed in the model and the number defined in the Chemical Component Dictionary. Similar counts are reported in the Torsion and Rings columns. '-' means no outliers of that kind were identified.

Mol	Type	Chain	Res	Link	Chirals	Torsions	Rings
2	NAG	B	1	2,1	-	0/6/23/26	0/1/1/1
2	NAG	B	2	2	-	1/6/23/26	0/1/1/1
3	NAG	C	1	3,1	-	2/6/23/26	0/1/1/1
3	NAG	C	2	3	-	2/6/23/26	0/1/1/1
3	BMA	C	3	3	-	2/2/19/22	0/1/1/1
4	NAG	D	1	4,1	-	0/6/23/26	0/1/1/1
4	NAG	D	2	4	-	2/6/23/26	0/1/1/1

Continued on next page...

Continued from previous page...

Mol	Type	Chain	Res	Link	Chirals	Torsions	Rings
4	BMA	D	3	4	-	0/2/19/22	0/1/1/1
4	MAN	D	4	4	-	0/2/19/22	0/1/1/1
4	MAN	D	5	4	-	0/2/19/22	0/1/1/1

All (1) bond length outliers are listed below:

Mol	Chain	Res	Type	Atoms	Z	Observed(Å)	Ideal(Å)
3	C	1	NAG	O7-C7	2.50	1.28	1.23

All (17) bond angle outliers are listed below:

Mol	Chain	Res	Type	Atoms	Z	Observed(°)	Ideal(°)
4	D	1	NAG	O5-C5-C6	3.94	113.38	107.20
4	D	1	NAG	O5-C1-C2	-3.88	105.16	111.29
4	D	1	NAG	C1-O5-C5	3.70	117.20	112.19
4	D	5	MAN	O5-C5-C6	3.20	112.22	107.20
4	D	2	NAG	C1-O5-C5	2.92	116.14	112.19
3	C	1	NAG	O4-C4-C3	-2.66	104.19	110.35
2	B	2	NAG	C1-O5-C5	2.65	115.78	112.19
2	B	2	NAG	C2-N2-C7	2.58	126.57	122.90
3	C	1	NAG	O5-C5-C4	-2.48	104.78	110.83
4	D	1	NAG	C6-C5-C4	-2.41	107.35	113.00
3	C	3	BMA	O5-C5-C6	2.39	110.95	107.20
4	D	4	MAN	O5-C5-C6	2.36	110.91	107.20
4	D	4	MAN	C1-O5-C5	2.34	115.37	112.19
3	C	1	NAG	C2-N2-C7	2.32	126.20	122.90
4	D	2	NAG	O4-C4-C5	-2.16	103.93	109.30
3	C	2	NAG	C8-C7-N2	2.15	119.75	116.10
2	B	1	NAG	O5-C1-C2	-2.10	107.97	111.29

There are no chirality outliers.

All (9) torsion outliers are listed below:

Mol	Chain	Res	Type	Atoms
3	C	3	BMA	O5-C5-C6-O6
3	C	3	BMA	C4-C5-C6-O6
3	C	1	NAG	C8-C7-N2-C2
3	C	1	NAG	O7-C7-N2-C2
3	C	2	NAG	C8-C7-N2-C2
3	C	2	NAG	O7-C7-N2-C2
4	D	2	NAG	C8-C7-N2-C2

Continued on next page...

Continued from previous page...

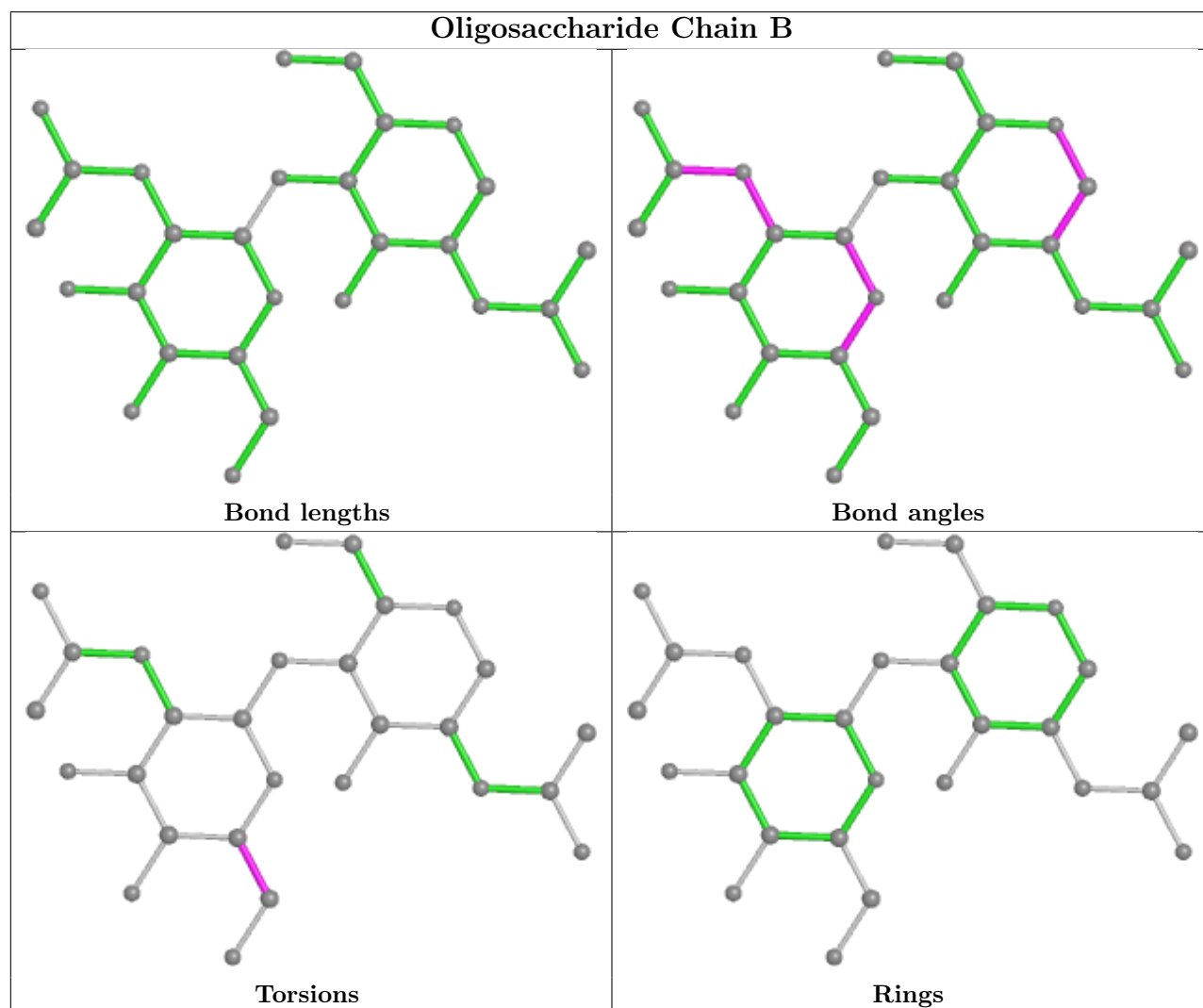
Mol	Chain	Res	Type	Atoms
4	D	2	NAG	O7-C7-N2-C2
2	B	2	NAG	C4-C5-C6-O6

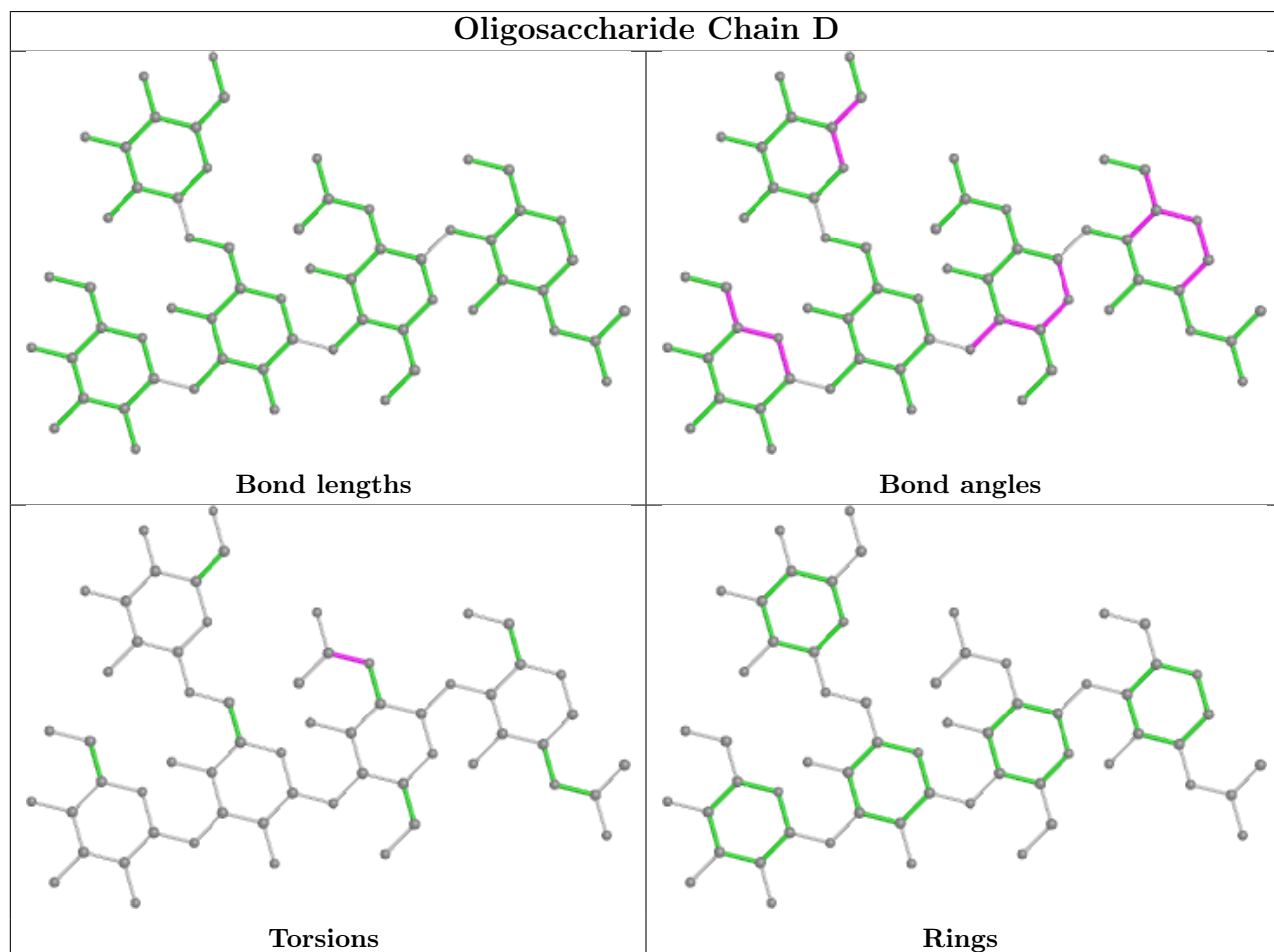
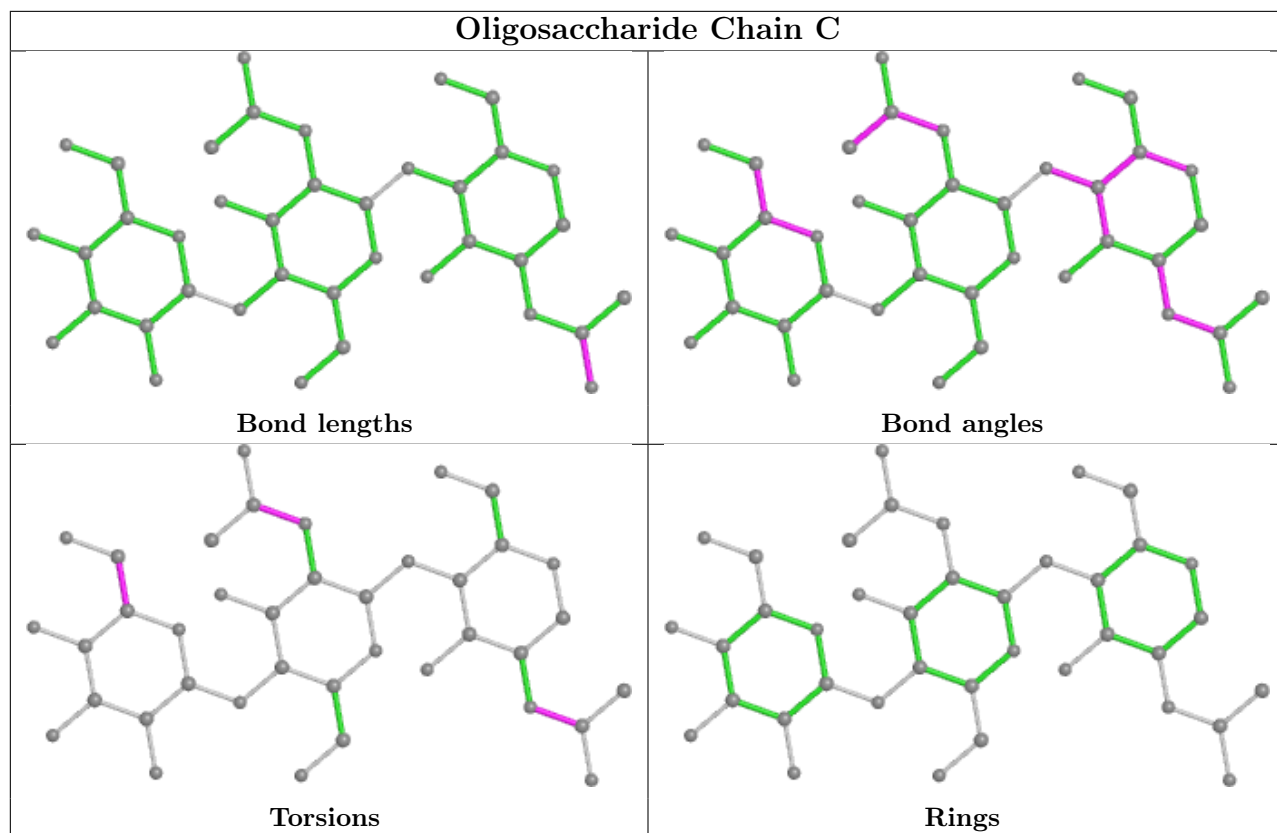
There are no ring outliers.

1 monomer is involved in 1 short contact:

Mol	Chain	Res	Type	Clashes	Symm-Clashes
4	D	5	MAN	0	1

The following is a two-dimensional graphical depiction of Mogul quality analysis of bond lengths, bond angles, torsion angles, and ring geometry for oligosaccharide.





5.6 Ligand geometry

Of 9 ligands modelled in this entry, 4 are monoatomic - leaving 5 for Mogul analysis.

In the following table, the Counts columns list the number of bonds (or angles) for which Mogul statistics could be retrieved, the number of bonds (or angles) that are observed in the model and the number of bonds (or angles) that are defined in the Chemical Component Dictionary. The Link column lists molecule types, if any, to which the group is linked. The Z score for a bond length (or angle) is the number of standard deviations the observed value is removed from the expected value. A bond length (or angle) with $|Z| > 2$ is considered an outlier worth inspection. RMSZ is the root-mean-square of all Z scores of the bond lengths (or angles).

Mol	Type	Chain	Res	Link	Bond lengths			Bond angles		
					Counts	RMSZ	# Z > 2	Counts	RMSZ	# Z > 2
5	NAG	A	805	1	14,14,15	0.64	0	17,19,21	2.79	4 (23%)
5	NAG	A	804	1	14,14,15	0.60	0	17,19,21	1.15	1 (5%)
5	NAG	A	806	1	14,14,15	0.64	0	17,19,21	0.83	1 (5%)
5	NAG	A	803	1	14,14,15	0.71	0	17,19,21	1.69	3 (17%)
9	9OT	A	819	6	77,77,77	2.02	18 (23%)	103,103,103	1.92	27 (26%)

In the following table, the Chirals column lists the number of chiral outliers, the number of chiral centers analysed, the number of these observed in the model and the number defined in the Chemical Component Dictionary. Similar counts are reported in the Torsion and Rings columns. '-' means no outliers of that kind were identified.

Mol	Type	Chain	Res	Link	Chirals	Torsions	Rings
5	NAG	A	805	1	-	3/6/23/26	0/1/1/1
5	NAG	A	804	1	-	0/6/23/26	0/1/1/1
5	NAG	A	806	1	-	1/6/23/26	0/1/1/1
5	NAG	A	803	1	-	2/6/23/26	0/1/1/1
9	9OT	A	819	6	-	6/80/80/80	0/4/4/4

All (18) bond length outliers are listed below:

Mol	Chain	Res	Type	Atoms	Z	Observed(Å)	Ideal(Å)
9	A	819	9OT	FCV-CCS	-9.04	1.20	1.35
9	A	819	9OT	CCP-CCN	-5.20	1.39	1.50
9	A	819	9OT	CBT-CBQ	-4.63	1.41	1.51
9	A	819	9OT	CBM-CBL	-4.33	1.41	1.50
9	A	819	9OT	CBG-CAW	-3.37	1.43	1.51
9	A	819	9OT	CAX-CAW	3.08	1.45	1.38
9	A	819	9OT	OBN-CBL	3.08	1.29	1.23
9	A	819	9OT	CCC-CCD	2.92	1.57	1.50

Continued on next page...

Continued from previous page...

Mol	Chain	Res	Type	Atoms	Z	Observed(Å)	Ideal(Å)
9	A	819	9OT	CAF-NAE	2.81	1.51	1.45
9	A	819	9OT	CCQ-NCR	2.78	1.40	1.34
9	A	819	9OT	CBY-NBZ	-2.66	1.28	1.34
9	A	819	9OT	OCH-CCG	2.51	1.28	1.23
9	A	819	9OT	CBS-CBM	2.40	1.43	1.39
9	A	819	9OT	CCG-NBU	2.39	1.38	1.33
9	A	819	9OT	CCT-CCS	2.39	1.40	1.37
9	A	819	9OT	CBB-CAW	2.35	1.42	1.37
9	A	819	9OT	CAO-CAP	2.23	1.55	1.50
9	A	819	9OT	OAQ-CAP	-2.15	1.23	1.30

All (36) bond angle outliers are listed below:

Mol	Chain	Res	Type	Atoms	Z	Observed(°)	Ideal(°)
9	A	819	9OT	CCQ-NCR-CCS	9.91	118.98	115.75
5	A	805	NAG	C1-O5-C5	9.43	124.97	112.19
9	A	819	9OT	CCA-CCG-NBU	-4.83	106.80	116.54
9	A	819	9OT	CCB-CCA-NBZ	4.36	119.70	110.88
9	A	819	9OT	CCB-CCA-CCG	4.32	120.29	110.20
9	A	819	9OT	CCP-CCQ-NCR	-4.00	118.08	123.67
5	A	803	NAG	O5-C5-C6	3.73	113.05	107.20
5	A	805	NAG	C8-C7-N2	3.55	122.12	116.10
5	A	805	NAG	C2-N2-C7	3.52	127.92	122.90
5	A	804	NAG	C1-O5-C5	3.34	116.72	112.19
9	A	819	9OT	FCV-CCS-CCT	-3.31	116.33	118.71
5	A	803	NAG	C1-C2-N2	-3.12	105.15	110.49
5	A	803	NAG	C8-C7-N2	2.74	120.73	116.10
9	A	819	9OT	FCV-CCS-NCR	2.73	116.73	114.95
9	A	819	9OT	OCF-CCD-CCC	-2.66	114.55	123.08
9	A	819	9OT	O-C-OXT	2.63	130.06	124.09
9	A	819	9OT	CBY-CBX-NCJ	-2.55	104.21	111.16
9	A	819	9OT	CBT-CBQ-CBP	-2.54	115.64	120.91
9	A	819	9OT	OAM-CAG-CAF	-2.51	114.01	122.26
9	A	819	9OT	CAG-CAF-NAE	-2.50	104.62	110.55
9	A	819	9OT	CBE-CBD-CBC	-2.49	116.95	120.44
9	A	819	9OT	CCA-NBZ-CBY	2.44	126.90	121.67
9	A	819	9OT	CBP-CBQ-CBR	2.42	121.96	118.17
9	A	819	9OT	CCC-CCB-CCA	-2.37	108.73	113.16
9	A	819	9OT	OCI-CBY-CBX	2.34	125.37	120.45
9	A	819	9OT	CCG-CCA-NBZ	2.29	117.38	111.16
9	A	819	9OT	OCH-CCG-NBU	2.27	127.87	122.99
9	A	819	9OT	CCU-CCT-CCS	-2.27	114.66	116.35

Continued on next page...

Continued from previous page...

Mol	Chain	Res	Type	Atoms	Z	Observed(°)	Ideal(°)
5	A	806	NAG	O5-C5-C6	2.25	110.73	107.20
9	A	819	9OT	OCM-CCK-CBV	-2.25	115.86	123.08
5	A	805	NAG	O5-C5-C4	2.17	116.11	110.83
9	A	819	9OT	OAL-CAG-CAF	2.15	120.56	113.40
9	A	819	9OT	OCH-CCG-CCA	2.09	124.86	120.45
9	A	819	9OT	CBS-CBR-CBQ	-2.05	118.21	121.03
9	A	819	9OT	CBQ-CBT-NBU	2.04	117.41	113.05
9	A	819	9OT	CBD-CBC-CAZ	2.01	123.58	120.44

There are no chirality outliers.

All (12) torsion outliers are listed below:

Mol	Chain	Res	Type	Atoms
9	A	819	9OT	NBZ-CCA-CCB-CCC
5	A	803	NAG	C8-C7-N2-C2
5	A	803	NAG	O7-C7-N2-C2
5	A	805	NAG	C8-C7-N2-C2
5	A	805	NAG	O7-C7-N2-C2
5	A	805	NAG	C4-C5-C6-O6
9	A	819	9OT	CCG-CCA-NBZ-CBY
9	A	819	9OT	CAT-CAS-CB-CA
9	A	819	9OT	CCB-CCC-CCD-OCF
9	A	819	9OT	CCB-CCC-CCD-OCE
9	A	819	9OT	NBZ-CCA-CCG-OCH
5	A	806	NAG	C4-C5-C6-O6

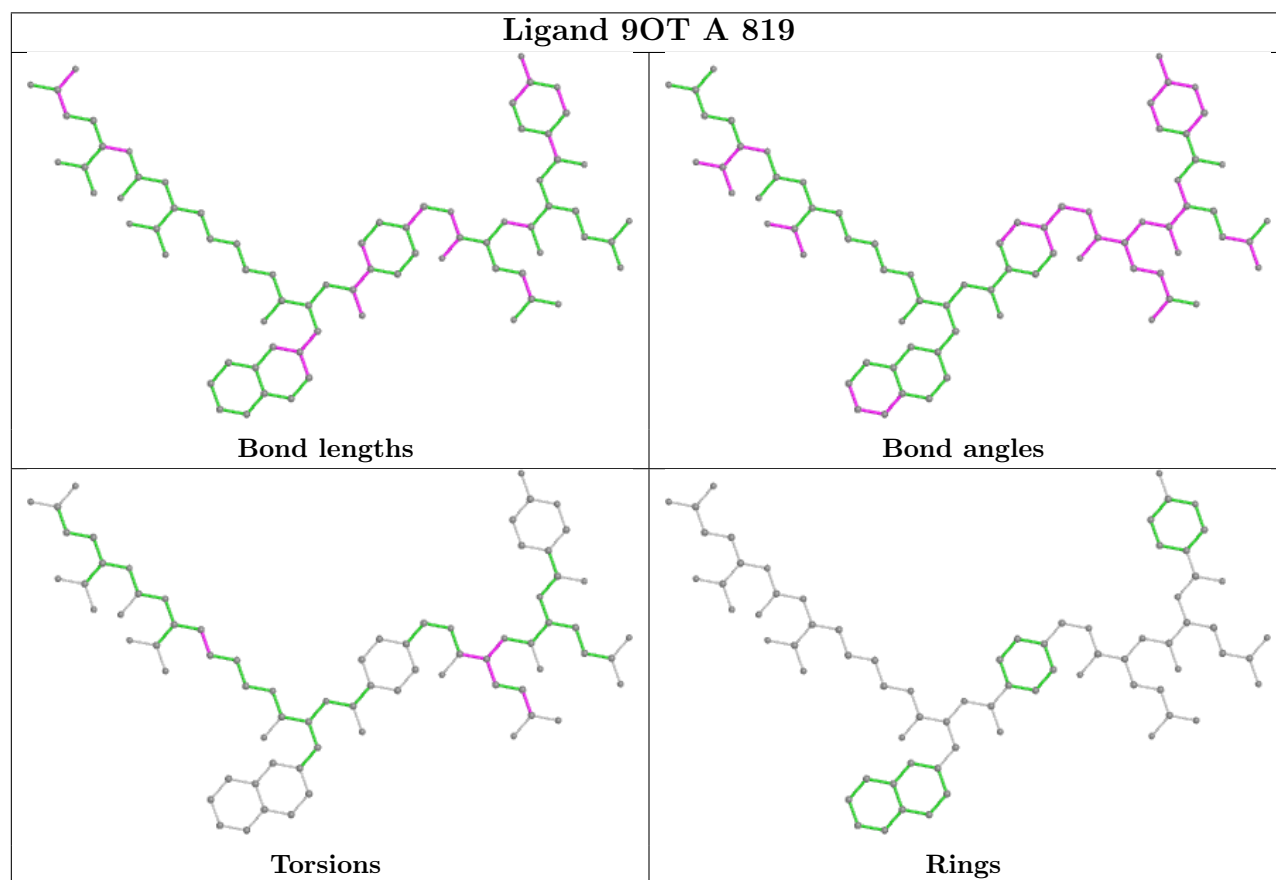
There are no ring outliers.

1 monomer is involved in 1 short contact:

Mol	Chain	Res	Type	Clashes	Symm-Clashes
5	A	806	NAG	1	0

The following is a two-dimensional graphical depiction of Mogul quality analysis of bond lengths, bond angles, torsion angles, and ring geometry for all instances of the Ligand of Interest. In addition, ligands with molecular weight > 250 and outliers as shown on the validation Tables will also be included. For torsion angles, if less than 5% of the Mogul distribution of torsion angles is within 10 degrees of the torsion angle in question, then that torsion angle is considered an outlier. Any bond that is central to one or more torsion angles identified as an outlier by Mogul will be highlighted in the graph. For rings, the root-mean-square deviation (RMSD) between the ring in question and similar rings identified by Mogul is calculated over all ring torsion angles. If the average RMSD is greater than 60 degrees and the minimal RMSD between the ring in question and any Mogul-identified rings is also greater than 60 degrees, then that ring is considered an outlier.

The outliers are highlighted in purple. The color gray indicates Mogul did not find sufficient equivalents in the CSD to analyse the geometry.



5.7 Other polymers [i](#)

There are no such residues in this entry.

5.8 Polymer linkage issues [i](#)

There are no chain breaks in this entry.

6 Fit of model and data

6.1 Protein, DNA and RNA chains

In the following table, the column labelled ‘#RSRZ> 2’ contains the number (and percentage) of RSRZ outliers, followed by percent RSRZ outliers for the chain as percentile scores relative to all X-ray entries and entries of similar resolution. The OWAB column contains the minimum, median, 95th percentile and maximum values of the occupancy-weighted average B-factor per residue. The column labelled ‘Q< 0.9’ lists the number of (and percentage) of residues with an average occupancy less than 0.9.

Mol	Chain	Analysed	<RSRZ>	#RSRZ>2	OWAB(Å ²)	Q<0.9
1	A	696/707 (98%)	0.30	43 (6%) 20 20	18, 29, 50, 70	0

All (43) RSRZ outliers are listed below:

Mol	Chain	Res	Type	RSRZ
1	A	55	LYS	5.3
1	A	135	GLY	5.1
1	A	719	VAL	4.9
1	A	544	ASN	4.8
1	A	507	SER	4.8
1	A	542	GLU	4.4
1	A	506	PHE	4.3
1	A	543	THR	4.3
1	A	545	LYS	4.3
1	A	134	ASP	4.0
1	A	136	ASN	3.8
1	A	336	ASN	3.7
1	A	133	GLU	3.3
1	A	155[A]	SER	3.3
1	A	279[A]	TYR	3.2
1	A	386	ILE	3.2
1	A	505[A]	GLU	3.2
1	A	123	THR	3.1
1	A	56	HIS	3.1
1	A	546	PHE	3.0
1	A	335	GLY	3.0
1	A	337	PHE	2.8
1	A	654[A]	ASP	2.7
1	A	541	TRP	2.7
1	A	490	GLY	2.7
1	A	652	ASP	2.7
1	A	515	LEU	2.7

Continued on next page...

Continued from previous page...

Mol	Chain	Res	Type	RSRZ
1	A	122	LYS	2.6
1	A	552	TYR	2.5
1	A	124	HIS	2.5
1	A	700	TYR	2.5
1	A	208	VAL	2.5
1	A	499	LYS	2.4
1	A	487	GLY	2.4
1	A	132	ASN	2.3
1	A	153	ASN	2.3
1	A	334	THR	2.3
1	A	373	ILE	2.3
1	A	486	GLU	2.2
1	A	209	PHE	2.1
1	A	504	PRO	2.1
1	A	428	LEU	2.1
1	A	530	ILE	2.1

6.2 Non-standard residues in protein, DNA, RNA chains [i](#)

There are no non-standard protein/DNA/RNA residues in this entry.

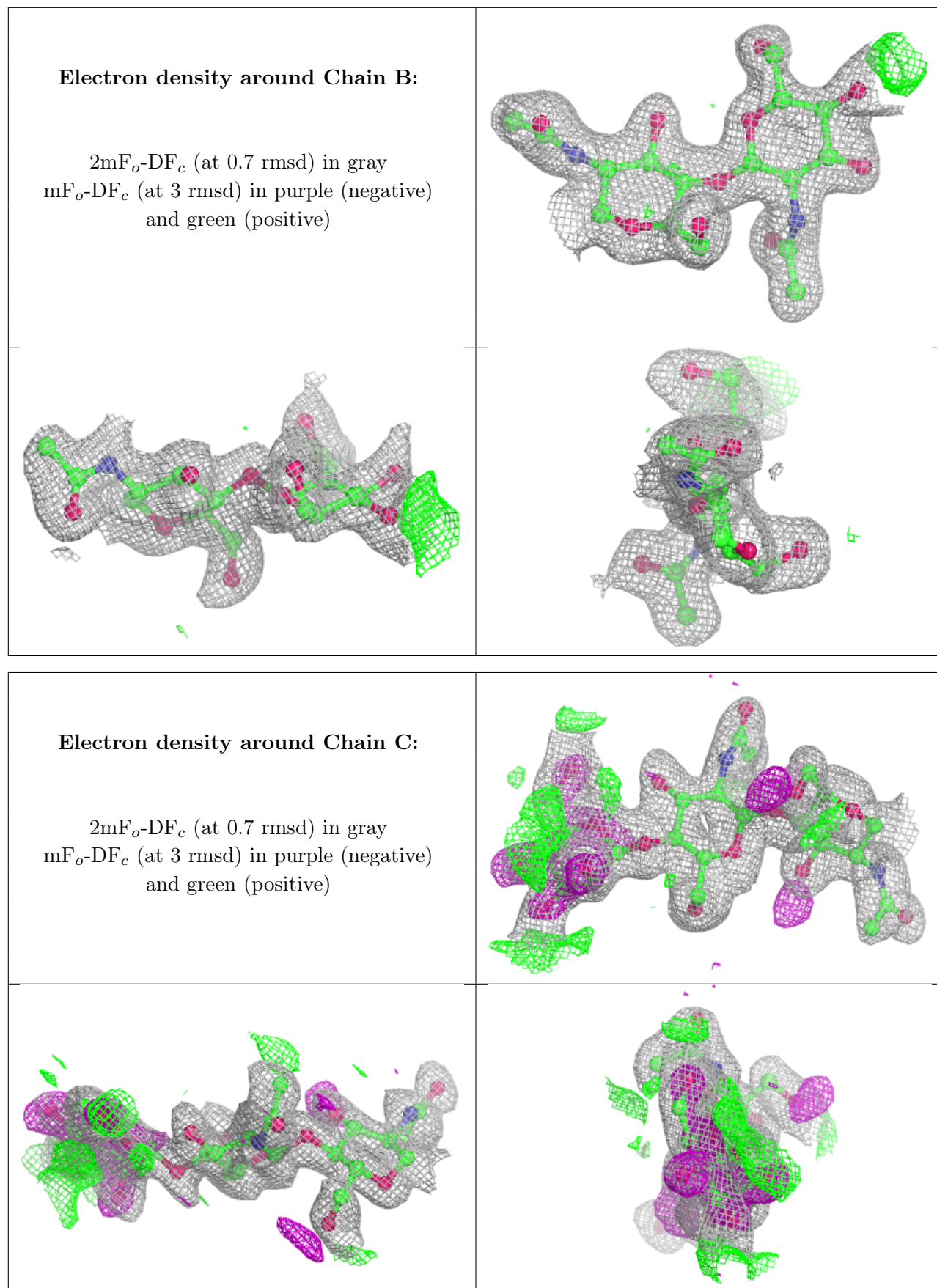
6.3 Carbohydrates [i](#)

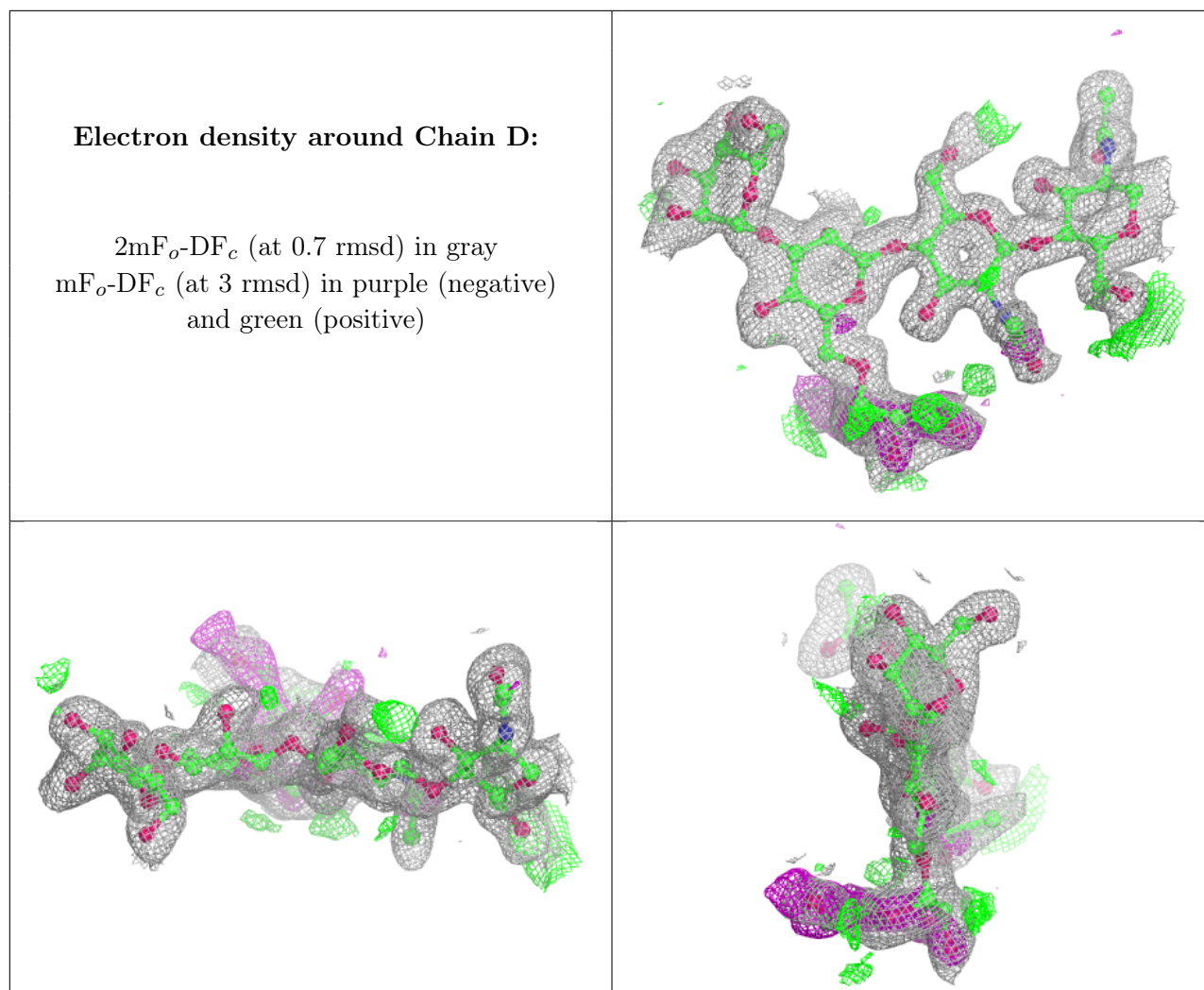
In the following table, the Atoms column lists the number of modelled atoms in the group and the number defined in the chemical component dictionary. The B-factors column lists the minimum, median, 95th percentile and maximum values of B factors of atoms in the group. The column labelled 'Q< 0.9' lists the number of atoms with occupancy less than 0.9.

Mol	Type	Chain	Res	Atoms	RSCC	RSR	B-factors(Å ²)	Q<0.9
3	BMA	C	3	11/12	0.74	0.40	34,35,39,40	0
2	NAG	B	2	14/15	0.79	0.24	42,53,67,69	0
4	MAN	D	5	11/12	0.84	0.36	34,37,40,40	0
4	NAG	D	2	14/15	0.87	0.16	38,42,61,65	0
4	MAN	D	4	11/12	0.88	0.14	43,51,53,53	0
4	BMA	D	3	11/12	0.88	0.13	36,41,45,48	0
3	NAG	C	2	14/15	0.92	0.15	36,44,57,60	0
3	NAG	C	1	14/15	0.94	0.14	31,34,44,47	0
4	NAG	D	1	14/15	0.95	0.08	26,31,44,55	0
2	NAG	B	1	14/15	0.96	0.11	34,43,52,56	0

The following is a graphical depiction of the model fit to experimental electron density for oligosac-

charide. Each fit is shown from different orientation to approximate a three-dimensional view.



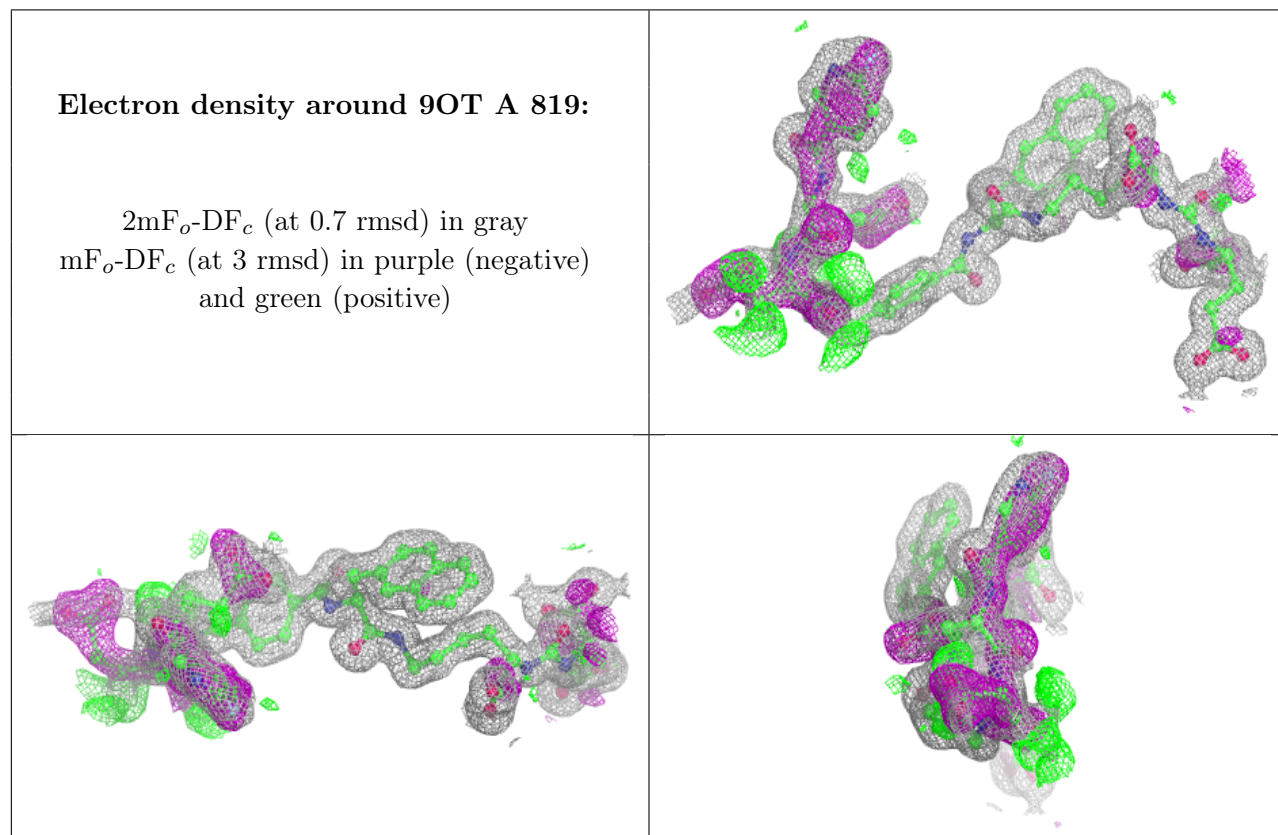


6.4 Ligands [i](#)

In the following table, the Atoms column lists the number of modelled atoms in the group and the number defined in the chemical component dictionary. The B-factors column lists the minimum, median, 95th percentile and maximum values of B factors of atoms in the group. The column labelled 'Q< 0.9' lists the number of atoms with occupancy less than 0.9.

Mol	Type	Chain	Res	Atoms	RSCC	RSR	B-factors(Å ²)	Q<0.9
9	9OT	A	819	74/74	0.74	0.18	21,24,35,39	0
5	NAG	A	805	14/15	0.84	0.26	59,71,90,90	0
5	NAG	A	803	14/15	0.90	0.28	46,57,71,78	0
5	NAG	A	804	14/15	0.90	0.14	44,47,53,54	0
5	NAG	A	806	14/15	0.92	0.12	33,51,72,82	0
6	ZN	A	816	1/1	1.00	0.09	21,21,21,21	0
7	CA	A	817	1/1	1.00	0.09	19,19,19,19	0
8	CL	A	818	1/1	1.00	0.14	24,24,24,24	0
6	ZN	A	815	1/1	1.00	0.07	20,20,20,20	0

The following is a graphical depiction of the model fit to experimental electron density of all instances of the Ligand of Interest. In addition, ligands with molecular weight > 250 and outliers as shown on the geometry validation Tables will also be included. Each fit is shown from different orientation to approximate a three-dimensional view.



6.5 Other polymers [i](#)

There are no such residues in this entry.