



# Full wwPDB X-ray Structure Validation Report ⓘ

Feb 29, 2024 – 10:05 AM EST

PDB ID : 5UWP  
Title : Crystal Structure of mDia2 NES Peptide in complex with CRM1-Ran-RanBP1  
Authors : Fung, H.Y.J.; Chook, Y.M.  
Deposited on : 2017-02-21  
Resolution : 2.05 Å(reported)

This is a Full wwPDB X-ray Structure Validation Report for a publicly released PDB entry.

We welcome your comments at [validation@mail.wwpdb.org](mailto:validation@mail.wwpdb.org)

A user guide is available at

<https://www.wwpdb.org/validation/2017/XrayValidationReportHelp>

with specific help available everywhere you see the ⓘ symbol.

The types of validation reports are described at

<http://www.wwpdb.org/validation/2017/FAQs#types>.

---

The following versions of software and data (see [references ⓘ](#)) were used in the production of this report:

MolProbity : 4.02b-467  
Mogul : 1.8.5 (274361), CSD as541be (2020)  
Xtriage (Phenix) : 1.13  
EDS : 2.36  
buster-report : 1.1.7 (2018)  
Percentile statistics : 20191225.v01 (using entries in the PDB archive December 25th 2019)  
Refmac : 5.8.0158  
CCP4 : 7.0.044 (Gargrove)  
Ideal geometry (proteins) : Engh & Huber (2001)  
Ideal geometry (DNA, RNA) : Parkinson et al. (1996)  
Validation Pipeline (wwPDB-VP) : 2.36

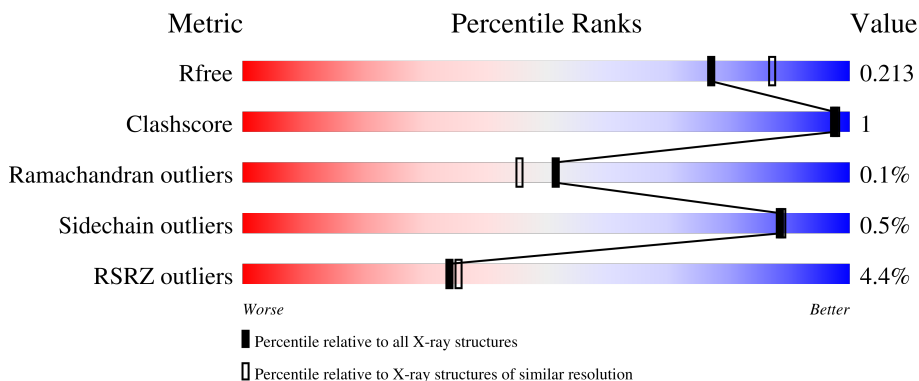
# 1 Overall quality at a glance

The following experimental techniques were used to determine the structure:

*X-RAY DIFFRACTION*

The reported resolution of this entry is 2.05 Å.

Percentile scores (ranging between 0-100) for global validation metrics of the entry are shown in the following graphic. The table shows the number of entries on which the scores are based.



Metric	Whole archive (#Entries)	Similar resolution (#Entries, resolution range(Å))
$R_{free}$	130704	2684 (2.08-2.04)
Clashscore	141614	2801 (2.08-2.04)
Ramachandran outliers	138981	2768 (2.08-2.04)
Sidechain outliers	138945	2768 (2.08-2.04)
RSRZ outliers	127900	2646 (2.08-2.04)

The table below summarises the geometric issues observed across the polymeric chains and their fit to the electron density. The red, orange, yellow and green segments of the lower bar indicate the fraction of residues that contain outliers for  $\geq 3$ , 2, 1 and 0 types of geometric quality criteria respectively. A grey segment represents the fraction of residues that are not modelled. The numeric value for each fraction is indicated below the corresponding segment, with a dot representing fractions  $\leq 5\%$ . The upper red bar (where present) indicates the fraction of residues that have poor fit to the electron density. The numeric value is given above the bar.

Mol	Chain	Length	Quality of chain
1	A	237	
2	B	143	
3	C	1024	
4	D	19	

## 2 Entry composition

There are 8 unique types of molecules in this entry. The entry contains 23072 atoms, of which 11136 are hydrogens and 0 are deuteriums.

In the tables below, the ZeroOcc column contains the number of atoms modelled with zero occupancy, the AltConf column contains the number of residues with at least one atom in alternate conformation and the Trace column contains the number of residues modelled with at most 2 atoms.

- Molecule 1 is a protein called GTP-binding nuclear protein Ran.

Mol	Chain	Residues	Atoms					ZeroOcc	AltConf	Trace	
			Total	C	H	N	O				S
1	A	209	3403	1095	1704	291	306	7	0	6	0

There are 21 discrepancies between the modelled and reference sequences:

Chain	Residue	Modelled	Actual	Comment	Reference
A	-20	MET	-	expression tag	UNP P62826
A	-19	GLU	-	expression tag	UNP P62826
A	-18	THR	-	expression tag	UNP P62826
A	-17	GLY	-	expression tag	UNP P62826
A	-16	SER	-	expression tag	UNP P62826
A	-15	SER	-	expression tag	UNP P62826
A	-14	HIS	-	expression tag	UNP P62826
A	-13	HIS	-	expression tag	UNP P62826
A	-12	HIS	-	expression tag	UNP P62826
A	-11	HIS	-	expression tag	UNP P62826
A	-10	HIS	-	expression tag	UNP P62826
A	-9	HIS	-	expression tag	UNP P62826
A	-8	SER	-	expression tag	UNP P62826
A	-7	SER	-	expression tag	UNP P62826
A	-6	GLY	-	expression tag	UNP P62826
A	-5	LEU	-	expression tag	UNP P62826
A	-4	PRO	-	expression tag	UNP P62826
A	-3	ARG	-	expression tag	UNP P62826
A	-2	GLY	-	expression tag	UNP P62826
A	-1	SER	-	expression tag	UNP P62826
A	0	HIS	-	expression tag	UNP P62826

- Molecule 2 is a protein called Ran-specific GTPase-activating protein 1.

Mol	Chain	Residues	Atoms					ZeroOcc	AltConf	Trace	
			Total	C	H	N	O				S
2	B	128	2096	667	1045	183	196	5	0	0	0

There are 3 discrepancies between the modelled and reference sequences:

Chain	Residue	Modelled	Actual	Comment	Reference
B	59	GLY	-	expression tag	UNP P41920
B	60	GLY	-	expression tag	UNP P41920
B	61	SER	-	expression tag	UNP P41920

- Molecule 3 is a protein called Exportin-1.

Mol	Chain	Residues	Atoms					ZeroOcc	AltConf	Trace	
			Total	C	H	N	O				S
3	C	996	16415	5237	8255	1345	1536	42	0	28	0

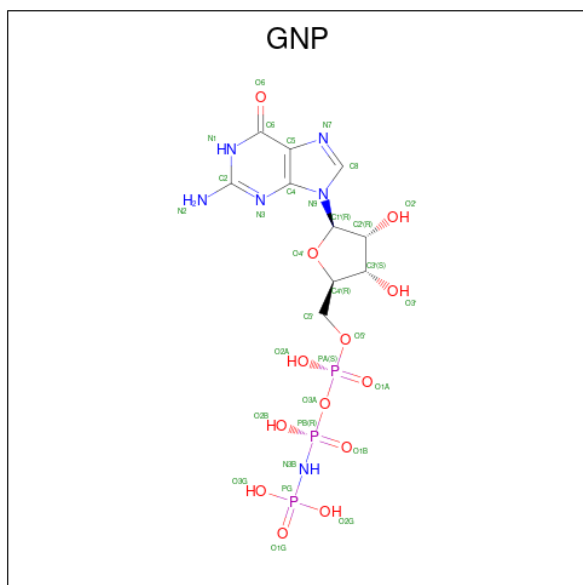
There are 9 discrepancies between the modelled and reference sequences:

Chain	Residue	Modelled	Actual	Comment	Reference
C	-2	GLY	-	expression tag	UNP P30822
C	-1	GLY	-	expression tag	UNP P30822
C	0	SER	-	expression tag	UNP P30822
C	441	ASP	VAL	conflict	UNP P30822
C	537	GLY	ASP	conflict	UNP P30822
C	539	CYS	THR	conflict	UNP P30822
C	540	GLU	VAL	conflict	UNP P30822
C	541	GLN	LYS	conflict	UNP P30822
C	1022	CYS	TYR	conflict	UNP P30822

- Molecule 4 is a protein called Protein diaphanous homolog 3.

Mol	Chain	Residues	Atoms					ZeroOcc	AltConf	Trace
			Total	C	H	N	O			
4	D	11	185	55	99	17	14	0	0	0

- Molecule 5 is PHOSPHOAMINOPHOSPHONIC ACID-GUANYLATE ESTER (three-letter code: GNP) (formula: C<sub>10</sub>H<sub>17</sub>N<sub>6</sub>O<sub>13</sub>P<sub>3</sub>).



Mol	Chain	Residues	Atoms					ZeroOcc	AltConf	
			Total	C	H	N	O			P
5	A	1	44	10	12	6	13	3	0	0

- Molecule 6 is MAGNESIUM ION (three-letter code: MG) (formula: Mg).

Mol	Chain	Residues	Atoms		ZeroOcc	AltConf
			Total	Mg		
6	A	1	1	1	0	0

- Molecule 7 is GLYCEROL (three-letter code: GOL) (formula: C<sub>3</sub>H<sub>8</sub>O<sub>3</sub>).



Mol	Chain	Residues	Atoms				ZeroOcc	AltConf
7	A	1	Total	C	H	O	0	0
			11	3	5	3		
7	C	1	Total	C	H	O	0	0
			14	3	8	3		
7	C	1	Total	C	H	O	0	0
			14	3	8	3		

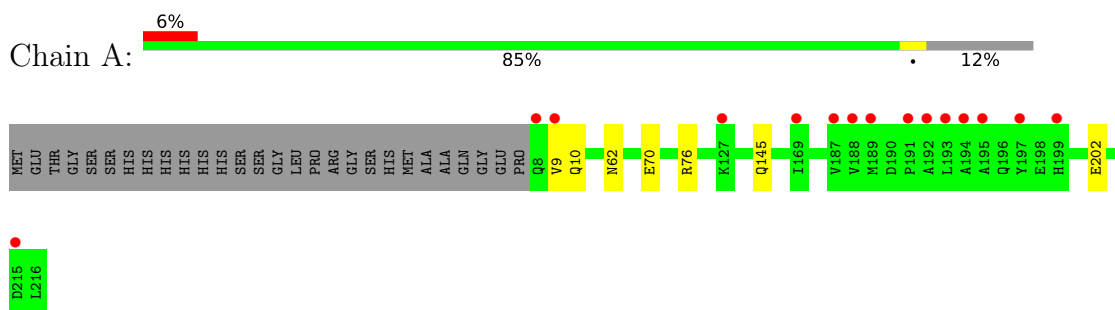
- Molecule 8 is water.

Mol	Chain	Residues	Atoms		ZeroOcc	AltConf
8	A	165	Total	O	0	0
			165	165		
8	B	30	Total	O	0	0
			30	30		
8	C	694	Total	O	0	0
			694	694		

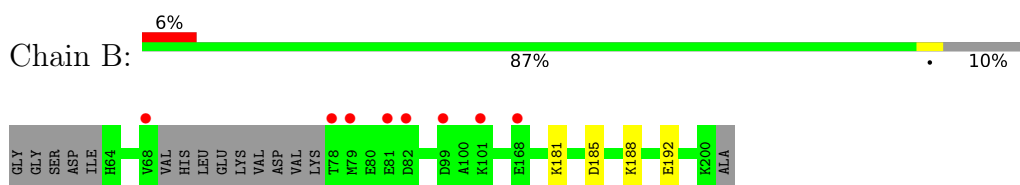
### 3 Residue-property plots [i](#)

These plots are drawn for all protein, RNA, DNA and oligosaccharide chains in the entry. The first graphic for a chain summarises the proportions of the various outlier classes displayed in the second graphic. The second graphic shows the sequence view annotated by issues in geometry and electron density. Residues are color-coded according to the number of geometric quality criteria for which they contain at least one outlier: green = 0, yellow = 1, orange = 2 and red = 3 or more. A red dot above a residue indicates a poor fit to the electron density ( $RSRZ > 2$ ). Stretches of 2 or more consecutive residues without any outlier are shown as a green connector. Residues present in the sample, but not in the model, are shown in grey.

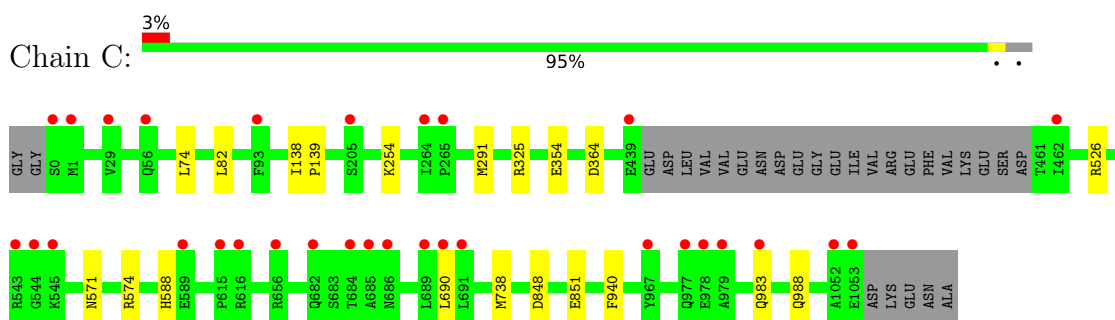
- Molecule 1: GTP-binding nuclear protein Ran



- Molecule 2: Ran-specific GTPase-activating protein 1



- Molecule 3: Exportin-1



- Molecule 4: Protein diaphanous homolog 3



## 4 Data and refinement statistics

Property	Value	Source
Space group	P 43 21 2	Depositor
Cell constants a, b, c, $\alpha$ , $\beta$ , $\gamma$	106.18Å 106.18Å 303.32Å 90.00° 90.00° 90.00°	Depositor
Resolution (Å)	36.44 – 2.05 36.44 – 2.05	Depositor EDS
% Data completeness (in resolution range)	97.2 (36.44-2.05) 97.2 (36.44-2.05)	Depositor EDS
$R_{merge}$	0.08	Depositor
$R_{sym}$	(Not available)	Depositor
$\langle I/\sigma(I) \rangle$ <sup>1</sup>	3.66 (at 2.05Å)	Xtrriage
Refinement program	PHENIX (1.11.1_2575: ???)	Depositor
R, $R_{free}$	0.178 , 0.213 0.178 , 0.213	Depositor DCC
$R_{free}$ test set	2000 reflections (1.89%)	wwPDB-VP
Wilson B-factor (Å <sup>2</sup> )	25.5	Xtrriage
Anisotropy	0.071	Xtrriage
Bulk solvent $k_{sol}$ (e/Å <sup>3</sup> ), $B_{sol}$ (Å <sup>2</sup> )	0.39 , 48.1	EDS
L-test for twinning <sup>2</sup>	$\langle  L  \rangle = 0.49$ , $\langle L^2 \rangle = 0.32$	Xtrriage
Estimated twinning fraction	No twinning to report.	Xtrriage
$F_o, F_c$ correlation	0.96	EDS
Total number of atoms	23072	wwPDB-VP
Average B, all atoms (Å <sup>2</sup> )	41.0	wwPDB-VP

Xtrriage's analysis on translational NCS is as follows: *The largest off-origin peak in the Patterson function is 3.09% of the height of the origin peak. No significant pseudotranslation is detected.*

<sup>1</sup>Intensities estimated from amplitudes.

<sup>2</sup>Theoretical values of  $\langle |L| \rangle$ ,  $\langle L^2 \rangle$  for acentric reflections are 0.5, 0.333 respectively for untwinned datasets, and 0.375, 0.2 for perfectly twinned datasets.



## 5 Model quality [i](#)

### 5.1 Standard geometry [i](#)

Bond lengths and bond angles in the following residue types are not validated in this section: MG, GOL, GNP

The Z score for a bond length (or angle) is the number of standard deviations the observed value is removed from the expected value. A bond length (or angle) with  $|Z| > 5$  is considered an outlier worth inspection. RMSZ is the root-mean-square of all Z scores of the bond lengths (or angles).

Mol	Chain	Bond lengths		Bond angles	
		RMSZ	# Z  >5	RMSZ	# Z  >5
1	A	0.28	0/1767	0.48	0/2397
2	B	0.26	0/1070	0.45	0/1429
3	C	0.26	0/8414	0.42	0/11397
4	D	0.22	0/85	0.42	0/112
All	All	0.26	0/11336	0.43	0/15335

There are no bond length outliers.

There are no bond angle outliers.

There are no chirality outliers.

There are no planarity outliers.

### 5.2 Too-close contacts [i](#)

In the following table, the Non-H and H(model) columns list the number of non-hydrogen atoms and hydrogen atoms in the chain respectively. The H(added) column lists the number of hydrogen atoms added and optimized by MolProbity. The Clashes column lists the number of clashes within the asymmetric unit, whereas Symm-Clashes lists symmetry-related clashes.

Mol	Chain	Non-H	H(model)	H(added)	Clashes	Symm-Clashes
1	A	1699	1704	1672	4	0
2	B	1051	1045	1045	2	0
3	C	8160	8255	8142	12	0
4	D	86	99	99	0	0
5	A	32	12	12	0	0
6	A	1	0	0	0	0
7	A	6	5	8	0	0
7	C	12	16	16	1	0
8	A	165	0	0	2	0

*Continued on next page...*

*Continued from previous page...*

Mol	Chain	Non-H	H(model)	H(added)	Clashes	Symm-Clashes
8	B	30	0	0	0	0
8	C	694	0	0	6	1
All	All	11936	11136	10994	18	1

The all-atom clashscore is defined as the number of clashes found per 1000 atoms (including hydrogen atoms). The all-atom clashscore for this structure is 1.

All (18) close contacts within the same asymmetric unit are listed below, sorted by their clash magnitude.

Atom-1	Atom-2	Interatomic distance (Å)	Clash overlap (Å)
3:C:325:ARG:NH2	8:C:1203:HOH:O	2.17	0.78
3:C:571:ASN:OD1	3:C:574:ARG:NH1	2.23	0.72
1:A:62[A]:ASN:ND2	8:A:403:HOH:O	2.24	0.69
3:C:851:GLU:OE2	8:C:1201:HOH:O	2.11	0.69
2:B:188:LYS:NZ	2:B:192:GLU:OE1	2.29	0.65
1:A:70:GLU:O	1:A:76:ARG:NH2	2.29	0.65
3:C:254:LYS:NZ	8:C:1206:HOH:O	2.26	0.58
3:C:848:ASP:OD2	8:C:1202:HOH:O	2.17	0.57
3:C:354[B]:GLU:OE2	7:C:1101:GOL:O3	2.22	0.55
3:C:526:ARG:NH2	8:C:1222:HOH:O	2.40	0.54
1:A:10:GLN:OE1	1:A:62[B]:ASN:ND2	2.34	0.52
3:C:983:GLN:N	3:C:983:GLN:OE1	2.44	0.49
3:C:74:LEU:HD11	3:C:82:LEU:HD11	1.95	0.48
3:C:364[B]:ASP:OD2	8:C:1204:HOH:O	2.21	0.44
3:C:690:LEU:HB2	3:C:738:MET:SD	2.59	0.42
3:C:138:ILE:HB	3:C:139:PRO:HD3	2.01	0.41
2:B:181:LYS:NZ	2:B:185:ASP:OD2	2.53	0.41
1:A:145:GLN:NE2	8:A:414:HOH:O	2.54	0.40

All (1) symmetry-related close contacts are listed below. The label for Atom-2 includes the symmetry operator and encoded unit-cell translations to be applied.

Atom-1	Atom-2	Interatomic distance (Å)	Clash overlap (Å)
8:C:1692:HOH:O	8:C:1722:HOH:O[6_455]	2.17	0.03

## 5.3 Torsion angles [i](#)

### 5.3.1 Protein backbone [i](#)

In the following table, the Percentiles column shows the percent Ramachandran outliers of the chain as a percentile score with respect to all X-ray entries followed by that with respect to entries of similar resolution.

The Analysed column shows the number of residues for which the backbone conformation was analysed, and the total number of residues.

Mol	Chain	Analysed	Favoured	Allowed	Outliers	Percentiles	
1	A	213/237 (90%)	206 (97%)	6 (3%)	1 (0%)	29	19
2	B	124/143 (87%)	118 (95%)	6 (5%)	0	100	100
3	C	1020/1024 (100%)	1004 (98%)	16 (2%)	0	100	100
4	D	9/19 (47%)	9 (100%)	0	0	100	100
All	All	1366/1423 (96%)	1337 (98%)	28 (2%)	1 (0%)	51	45

All (1) Ramachandran outliers are listed below:

Mol	Chain	Res	Type
1	A	9	VAL

### 5.3.2 Protein sidechains [i](#)

In the following table, the Percentiles column shows the percent sidechain outliers of the chain as a percentile score with respect to all X-ray entries followed by that with respect to entries of similar resolution.

The Analysed column shows the number of residues for which the sidechain conformation was analysed, and the total number of residues.

Mol	Chain	Analysed	Rotameric	Outliers	Percentiles	
1	A	187/203 (92%)	186 (100%)	1 (0%)	88	89
2	B	110/122 (90%)	110 (100%)	0	100	100
3	C	937/933 (100%)	933 (100%)	4 (0%)	91	91
4	D	8/14 (57%)	7 (88%)	1 (12%)	4	1
All	All	1242/1272 (98%)	1236 (100%)	6 (0%)	88	89

All (6) residues with a non-rotameric sidechain are listed below:

Mol	Chain	Res	Type
1	A	202	GLU
3	C	291	MET
3	C	588	HIS
3	C	940	PHE
3	C	988	GLN
4	D	1190	LEU

Sometimes sidechains can be flipped to improve hydrogen bonding and reduce clashes. All (4) such sidechains are listed below:

Mol	Chain	Res	Type
3	C	9	ASN
3	C	303	ASN
3	C	969	ASN
3	C	988	GLN

### 5.3.3 RNA [i](#)

There are no RNA molecules in this entry.

## 5.4 Non-standard residues in protein, DNA, RNA chains [i](#)

There are no non-standard protein/DNA/RNA residues in this entry.

## 5.5 Carbohydrates [i](#)

There are no monosaccharides in this entry.

## 5.6 Ligand geometry [i](#)

Of 5 ligands modelled in this entry, 1 is monoatomic - leaving 4 for Mogul analysis.

In the following table, the Counts columns list the number of bonds (or angles) for which Mogul statistics could be retrieved, the number of bonds (or angles) that are observed in the model and the number of bonds (or angles) that are defined in the Chemical Component Dictionary. The Link column lists molecule types, if any, to which the group is linked. The Z score for a bond length (or angle) is the number of standard deviations the observed value is removed from the expected value. A bond length (or angle) with  $|Z| > 2$  is considered an outlier worth inspection. RMSZ is the root-mean-square of all Z scores of the bond lengths (or angles).

Mol	Type	Chain	Res	Link	Bond lengths			Bond angles		
					Counts	RMSZ	# Z  > 2	Counts	RMSZ	# Z  > 2
7	GOL	A	303	-	5,5,5	0.38	0	5,5,5	0.24	0
7	GOL	C	1102	-	5,5,5	0.36	0	5,5,5	0.23	0
5	GNP	A	301	6	29,34,34	4.86	15 (51%)	33,54,54	1.73	9 (27%)
7	GOL	C	1101	-	5,5,5	0.46	0	5,5,5	0.15	0

In the following table, the Chirals column lists the number of chiral outliers, the number of chiral centers analysed, the number of these observed in the model and the number defined in the Chemical Component Dictionary. Similar counts are reported in the Torsion and Rings columns. '-' means no outliers of that kind were identified.

Mol	Type	Chain	Res	Link	Chirals	Torsions	Rings
7	GOL	A	303	-	-	0/4/4/4	-
7	GOL	C	1102	-	-	0/4/4/4	-
5	GNP	A	301	6	-	3/14/38/38	0/3/3/3
7	GOL	C	1101	-	-	3/4/4/4	-

All (15) bond length outliers are listed below:

Mol	Chain	Res	Type	Atoms	Z	Observed(Å)	Ideal(Å)
5	A	301	GNP	O4'-C1'	14.55	1.61	1.41
5	A	301	GNP	C2'-C1'	-14.08	1.32	1.53
5	A	301	GNP	C2-N2	9.97	1.53	1.33
5	A	301	GNP	PB-O1B	5.78	1.55	1.46
5	A	301	GNP	PB-O3A	5.61	1.66	1.59
5	A	301	GNP	O4'-C4'	-5.31	1.33	1.45
5	A	301	GNP	O2'-C2'	4.09	1.52	1.43
5	A	301	GNP	PG-O1G	3.99	1.52	1.46
5	A	301	GNP	O3'-C3'	-2.85	1.36	1.43
5	A	301	GNP	PB-N3B	2.60	1.70	1.63
5	A	301	GNP	C5-C4	-2.55	1.34	1.40
5	A	301	GNP	PA-O5'	2.22	1.68	1.59
5	A	301	GNP	PG-N3B	2.18	1.69	1.63
5	A	301	GNP	O6-C6	-2.11	1.19	1.24
5	A	301	GNP	PB-O2B	-2.11	1.51	1.56

All (9) bond angle outliers are listed below:

Mol	Chain	Res	Type	Atoms	Z	Observed(°)	Ideal(°)
5	A	301	GNP	N3-C2-N1	-4.67	121.00	127.22
5	A	301	GNP	C2-N3-C4	3.64	119.51	115.36
5	A	301	GNP	C1'-N9-C4	-2.95	121.46	126.64

*Continued on next page...*

*Continued from previous page...*

Mol	Chain	Res	Type	Atoms	Z	Observed(°)	Ideal(°)
5	A	301	GNP	C5-C6-N1	-2.89	119.47	123.43
5	A	301	GNP	N2-C2-N3	2.66	122.12	117.79
5	A	301	GNP	C2-N1-C6	2.45	119.82	115.93
5	A	301	GNP	O1G-PG-N3B	-2.26	108.44	111.77
5	A	301	GNP	C3'-C2'-C1'	2.19	104.28	100.98
5	A	301	GNP	PB-O3A-PA	-2.17	124.98	132.62

There are no chirality outliers.

All (6) torsion outliers are listed below:

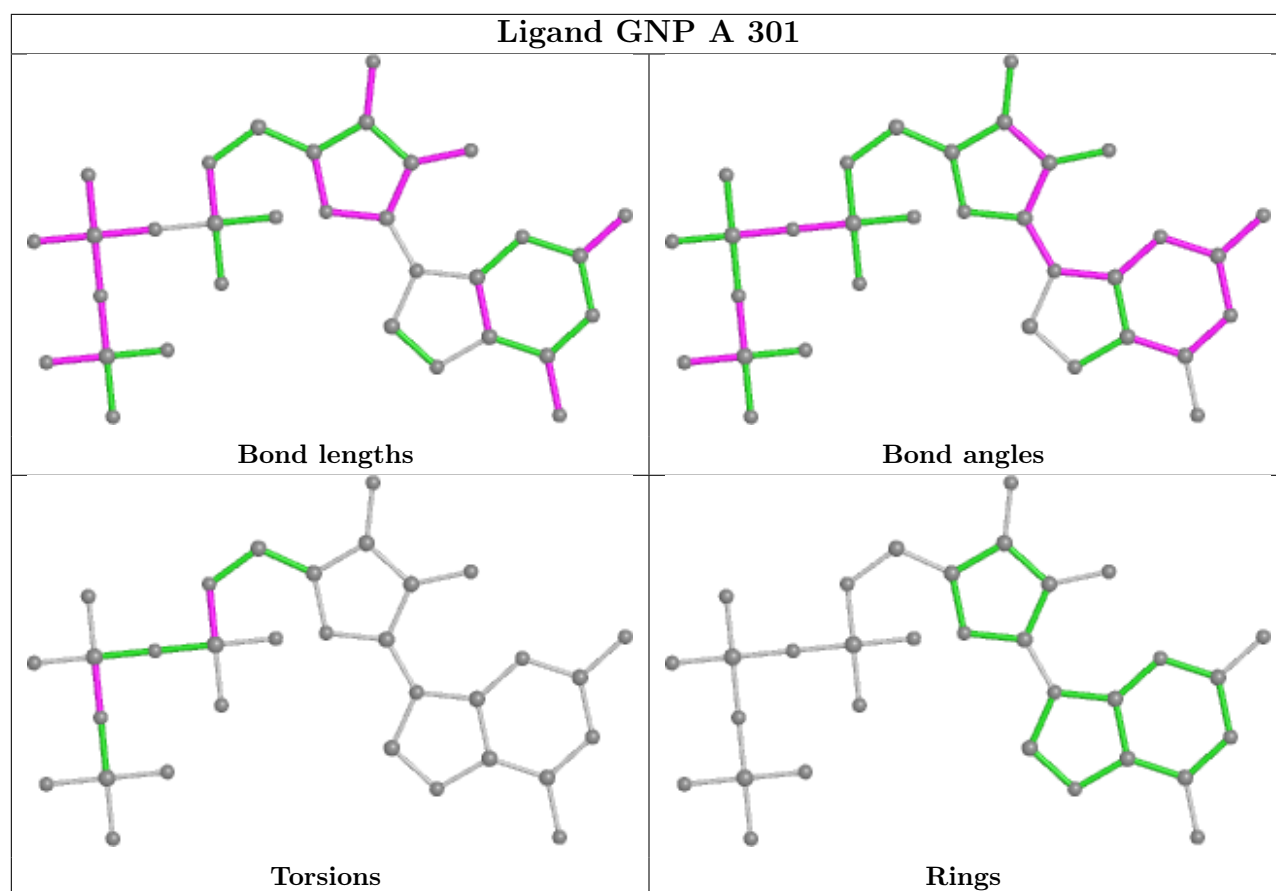
Mol	Chain	Res	Type	Atoms
5	A	301	GNP	PG-N3B-PB-O1B
7	C	1101	GOL	O1-C1-C2-C3
7	C	1101	GOL	O1-C1-C2-O2
7	C	1101	GOL	C1-C2-C3-O3
5	A	301	GNP	C5'-O5'-PA-O1A
5	A	301	GNP	PG-N3B-PB-O3A

There are no ring outliers.

1 monomer is involved in 1 short contact:

Mol	Chain	Res	Type	Clashes	Symm-Clashes
7	C	1101	GOL	1	0

The following is a two-dimensional graphical depiction of Mogul quality analysis of bond lengths, bond angles, torsion angles, and ring geometry for all instances of the Ligand of Interest. In addition, ligands with molecular weight > 250 and outliers as shown on the validation Tables will also be included. For torsion angles, if less than 5% of the Mogul distribution of torsion angles is within 10 degrees of the torsion angle in question, then that torsion angle is considered an outlier. Any bond that is central to one or more torsion angles identified as an outlier by Mogul will be highlighted in the graph. For rings, the root-mean-square deviation (RMSD) between the ring in question and similar rings identified by Mogul is calculated over all ring torsion angles. If the average RMSD is greater than 60 degrees and the minimal RMSD between the ring in question and any Mogul-identified rings is also greater than 60 degrees, then that ring is considered an outlier. The outliers are highlighted in purple. The color gray indicates Mogul did not find sufficient equivalents in the CSD to analyse the geometry.



## 5.7 Other polymers [\(i\)](#)

There are no such residues in this entry.

## 5.8 Polymer linkage issues [\(i\)](#)

There are no chain breaks in this entry.

## 6 Fit of model and data

### 6.1 Protein, DNA and RNA chains

In the following table, the column labelled ‘#RSRZ > 2’ contains the number (and percentage) of RSRZ outliers, followed by percent RSRZ outliers for the chain as percentile scores relative to all X-ray entries and entries of similar resolution. The OWAB column contains the minimum, median, 95<sup>th</sup> percentile and maximum values of the occupancy-weighted average B-factor per residue. The column labelled ‘Q < 0.9’ lists the number of (and percentage) of residues with an average occupancy less than 0.9.

Mol	Chain	Analysed	<RSRZ>	#RSRZ>2	OWAB(Å <sup>2</sup> )	Q<0.9
1	A	209/237 (88%)	0.19	15 (7%) 15 16	14, 29, 71, 110	0
2	B	128/143 (89%)	0.24	8 (6%) 20 20	29, 45, 81, 118	0
3	C	996/1024 (97%)	0.02	31 (3%) 49 52	12, 32, 68, 115	0
4	D	11/19 (57%)	1.52	5 (45%) 0 0	77, 83, 95, 97	0
All	All	1344/1423 (94%)	0.08	59 (4%) 34 35	12, 33, 73, 118	0

All (59) RSRZ outliers are listed below:

Mol	Chain	Res	Type	RSRZ
3	C	691	LEU	6.0
3	C	978	GLU	5.5
3	C	689	LEU	4.8
2	B	68	VAL	4.7
3	C	264	ILE	4.2
1	A	188	VAL	4.2
1	A	197	TYR	4.2
1	A	187	VAL	4.2
1	A	194	ALA	3.9
3	C	1052	ALA	3.9
1	A	189	MET	3.9
1	A	8	GLN	3.7
1	A	9	VAL	3.7
1	A	195	ALA	3.4
3	C	1053	GLU	3.4
3	C	616	ARG	3.3
3	C	983	GLN	3.2
3	C	544	GLY	3.2
3	C	686	ASN	3.1
3	C	967	TYR	3.1
3	C	545	LYS	3.1

*Continued on next page...*



*Continued from previous page...*

Mol	Chain	Res	Type	RSRZ
2	B	81	GLU	3.1
3	C	684	THR	3.1
1	A	127	LYS	3.0
3	C	685	ALA	3.0
2	B	168	GLU	3.0
3	C	543	ARG	2.9
2	B	101	LYS	2.8
3	C	979	ALA	2.7
4	D	1193	LEU	2.7
1	A	192	ALA	2.7
4	D	1188	ALA	2.6
1	A	191	PRO	2.6
3	C	205	SER	2.6
2	B	82	ASP	2.5
3	C	0	SER	2.5
4	D	1184	GLU	2.5
4	D	1185	ALA	2.5
1	A	215	ASP	2.5
1	A	199	HIS	2.4
3	C	93	PHE	2.4
2	B	79	MET	2.4
3	C	977	GLN	2.4
3	C	439	GLU	2.4
3	C	265	PRO	2.3
3	C	462	ILE	2.3
3	C	56	GLN	2.3
2	B	99	ASP	2.2
1	A	169	ILE	2.2
2	B	78	THR	2.2
3	C	615	PRO	2.2
3	C	1	MET	2.1
3	C	656	ARG	2.1
3	C	690	LEU	2.1
3	C	682	GLN	2.1
3	C	589	GLU	2.1
1	A	193	LEU	2.1
3	C	29	VAL	2.1
4	D	1183	VAL	2.0

## 6.2 Non-standard residues in protein, DNA, RNA chains

There are no non-standard protein/DNA/RNA residues in this entry.

### 6.3 Carbohydrates [i](#)

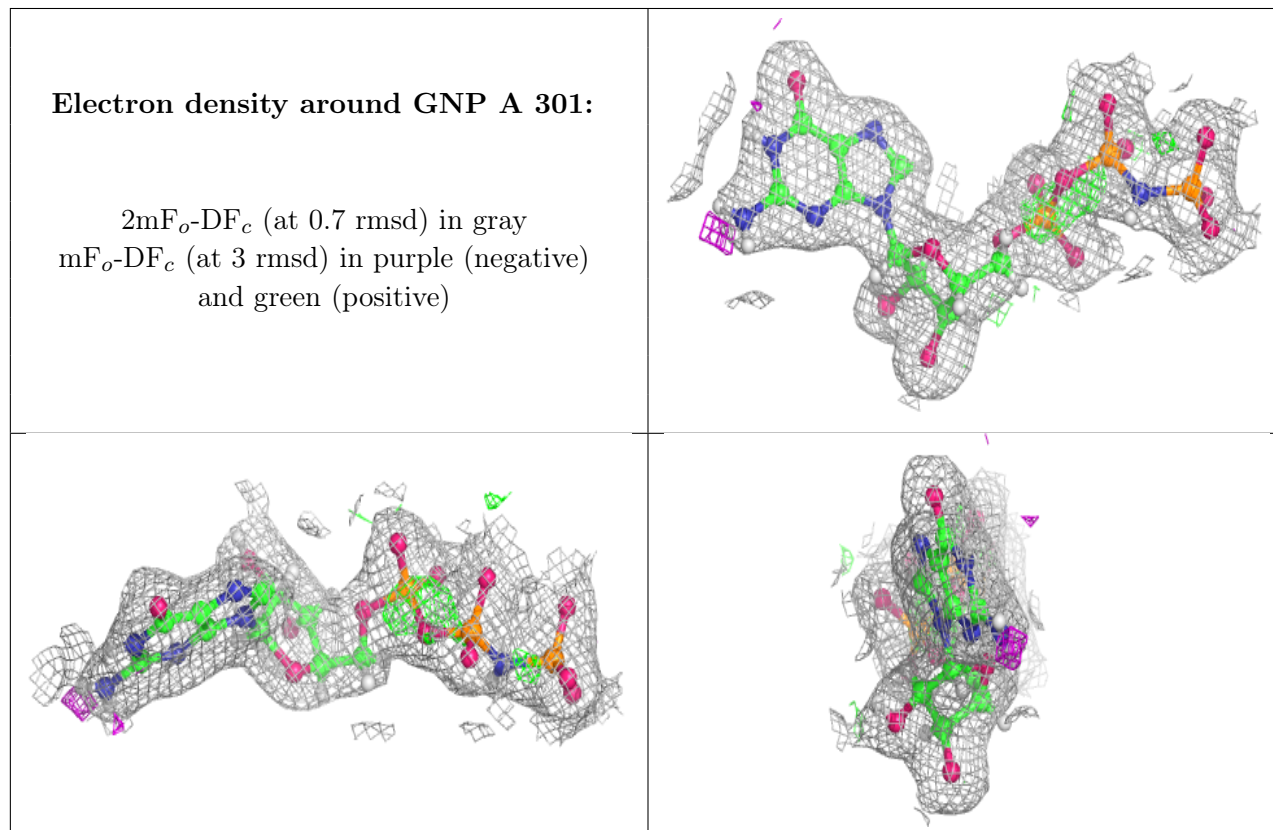
There are no monosaccharides in this entry.

### 6.4 Ligands [i](#)

In the following table, the Atoms column lists the number of modelled atoms in the group and the number defined in the chemical component dictionary. The B-factors column lists the minimum, median, 95<sup>th</sup> percentile and maximum values of B factors of atoms in the group. The column labelled 'Q< 0.9' lists the number of atoms with occupancy less than 0.9.

Mol	Type	Chain	Res	Atoms	RSCC	RSR	B-factors( $\text{\AA}^2$ )	Q<0.9
7	GOL	A	303	6/6	0.89	0.19	44,49,59,64	0
7	GOL	C	1101	6/6	0.91	0.26	36,51,60,64	0
7	GOL	C	1102	6/6	0.91	0.36	62,75,80,82	0
5	GNP	A	301	32/32	0.97	0.10	18,23,28,31	0
6	MG	A	302	1/1	0.99	0.06	20,20,20,20	0

The following is a graphical depiction of the model fit to experimental electron density of all instances of the Ligand of Interest. In addition, ligands with molecular weight > 250 and outliers as shown on the geometry validation Tables will also be included. Each fit is shown from different orientation to approximate a three-dimensional view.



## 6.5 Other polymers [i](#)

There are no such residues in this entry.