



Full wwPDB X-ray Structure Validation Report ⓘ

Nov 13, 2023 – 10:51 PM JST

PDB ID : 5YEI
Title : Mechanistic insight into the regulation of *Pseudomonas aeruginosa* aspartate kinase
Authors : Li, C.; Yang, M.; Liu, L.; Peng, C.; Li, T.; He, L.; Song, Y.; Zhu, Y.; Bao, R.
Deposited on : 2017-09-17
Resolution : 2.30 Å (reported)

This is a Full wwPDB X-ray Structure Validation Report for a publicly released PDB entry.

We welcome your comments at validation@mail.wwpdb.org

A user guide is available at

<https://www.wwpdb.org/validation/2017/XrayValidationReportHelp>

with specific help available everywhere you see the ⓘ symbol.

The types of validation reports are described at

<http://www.wwpdb.org/validation/2017/FAQs#types>.

The following versions of software and data (see [references ⓘ](#)) were used in the production of this report:

MolProbity : 4.02b-467
Mogul : 1.8.5 (274361), CSD as541be (2020)
Xtriage (Phenix) : 1.13
EDS : 2.36
Percentile statistics : 20191225.v01 (using entries in the PDB archive December 25th 2019)
Refmac : 5.8.0158
CCP4 : 7.0.044 (Gargrove)
Ideal geometry (proteins) : Engh & Huber (2001)
Ideal geometry (DNA, RNA) : Parkinson et al. (1996)
Validation Pipeline (wwPDB-VP) : 2.36

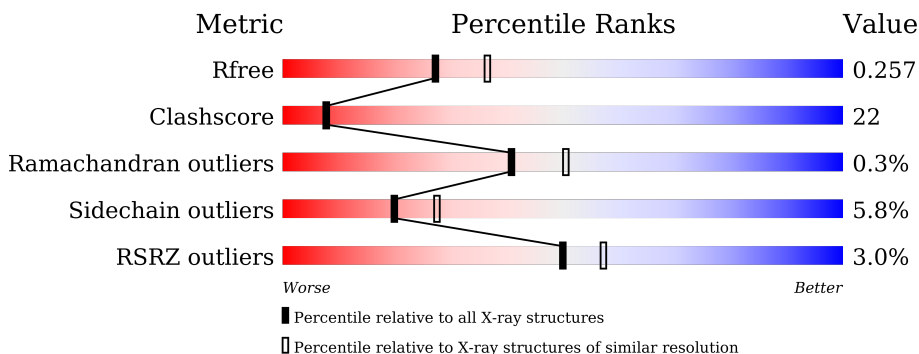
1 Overall quality at a glance

The following experimental techniques were used to determine the structure:

X-RAY DIFFRACTION

The reported resolution of this entry is 2.30 Å.

Percentile scores (ranging between 0-100) for global validation metrics of the entry are shown in the following graphic. The table shows the number of entries on which the scores are based.



Metric	Whole archive (#Entries)	Similar resolution (#Entries, resolution range(Å))
R_{free}	130704	5042 (2.30-2.30)
Clashscore	141614	5643 (2.30-2.30)
Ramachandran outliers	138981	5575 (2.30-2.30)
Sidechain outliers	138945	5575 (2.30-2.30)
RSRZ outliers	127900	4938 (2.30-2.30)

The table below summarises the geometric issues observed across the polymeric chains and their fit to the electron density. The red, orange, yellow and green segments of the lower bar indicate the fraction of residues that contain outliers for ≥ 3 , 2, 1 and 0 types of geometric quality criteria respectively. A grey segment represents the fraction of residues that are not modelled. The numeric value for each fraction is indicated below the corresponding segment, with a dot representing fractions $\leq 5\%$. The upper red bar (where present) indicates the fraction of residues that have poor fit to the electron density. The numeric value is given above the bar.

Mol	Chain	Length	Quality of chain
1	B	164	 71% 22% 5%
1	D	164	 70% 21% 5%
1	F	164	 60% 27% 5% 8%
1	H	164	 60% 30% 5% 5%
2	A	412	 67% 27% 2% 2%
2	C	412	 72% 22% 2% 2%

Continued on next page...

Continued from previous page...

Mol	Chain	Length	Quality of chain
2	E	412	<p>4% 67% 26%</p>
2	G	412	<p>4% 63% 30%</p>

The following table lists non-polymeric compounds, carbohydrate monomers and non-standard residues in protein, DNA, RNA chains that are outliers for geometric or electron-density-fit criteria:

Mol	Type	Chain	Res	Chirality	Geometry	Clashes	Electron density
3	THR	F	501	-	-	X	-
3	THR	G	503	-	-	X	-
4	LYS	C	502	-	-	X	-
4	LYS	G	502	-	-	X	-

2 Entry composition [i](#)

There are 6 unique types of molecules in this entry. The entry contains 16949 atoms, of which 0 are hydrogens and 0 are deuteriums.

In the tables below, the ZeroOcc column contains the number of atoms modelled with zero occupancy, the AltConf column contains the number of residues with at least one atom in alternate conformation and the Trace column contains the number of residues modelled with at most 2 atoms.

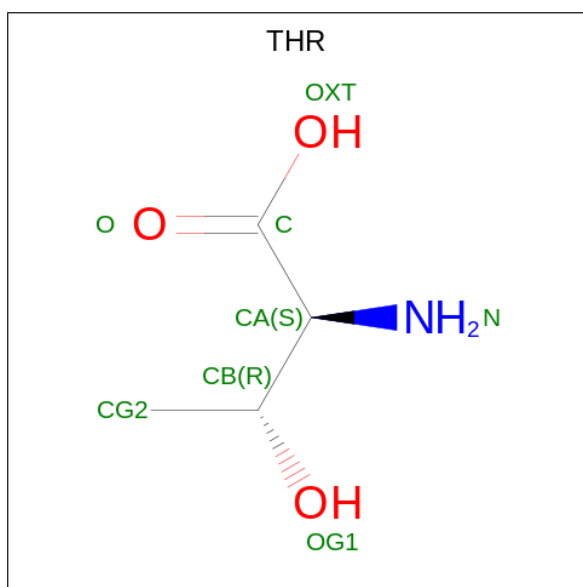
- Molecule 1 is a protein called Aspartokinase.

Mol	Chain	Residues	Atoms					ZeroOcc	AltConf	Trace
			Total	C	N	O	S			
1	D	156	1178	743	204	227	4	0	0	0
1	B	156	1178	743	204	227	4	0	0	0
1	F	151	1145	722	199	220	4	0	0	0
1	H	156	1178	743	204	227	4	0	0	0

- Molecule 2 is a protein called Aspartokinase.

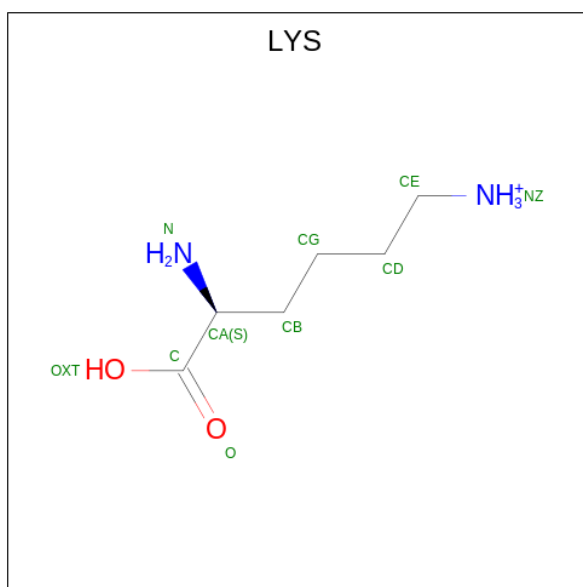
Mol	Chain	Residues	Atoms					ZeroOcc	AltConf	Trace
			Total	C	N	O	S			
2	C	397	2993	1879	526	577	11	0	0	0
2	G	397	2993	1879	526	577	11	0	0	0
2	A	397	2993	1879	526	577	11	0	0	0
2	E	397	2993	1879	526	577	11	0	0	0

- Molecule 3 is THREONINE (three-letter code: THR) (formula: C₄H₉NO₃).



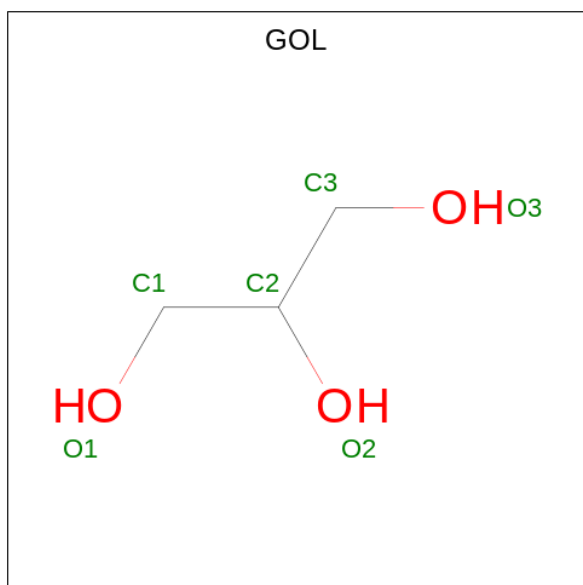
Mol	Chain	Residues	Atoms				ZeroOcc	AltConf
			Total	C	N	O		
3	D	1	8	4	1	3	0	0
3	B	1	8	4	1	3	0	0
3	F	1	8	4	1	3	0	0
3	F	1	8	4	1	3	0	0
3	C	1	8	4	1	3	0	0
3	H	1	8	4	1	3	0	0
3	G	1	8	4	1	3	0	0
3	A	1	8	4	1	3	0	0

- Molecule 4 is LYSINE (three-letter code: LYS) (formula: C₆H₁₅N₂O₂).



Mol	Chain	Residues	Atoms				ZeroOcc	AltConf
			Total	C	N	O		
4	C	1	Total 10	C 6	N 2	O 2	0	0
4	G	1	Total 10	C 6	N 2	O 2	0	0
4	A	1	Total 10	C 6	N 2	O 2	0	0
4	E	1	Total 10	C 6	N 2	O 2	0	0

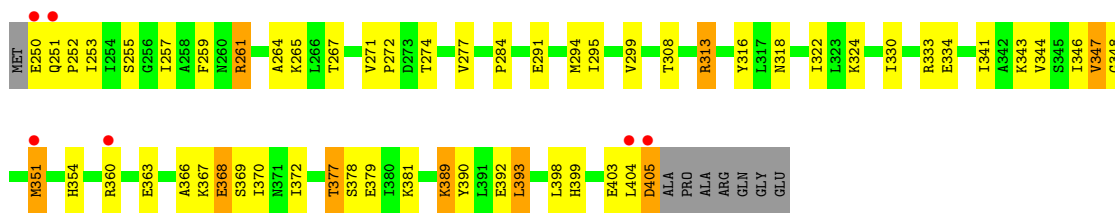
- Molecule 5 is GLYCEROL (three-letter code: GOL) (formula: C₃H₈O₃).



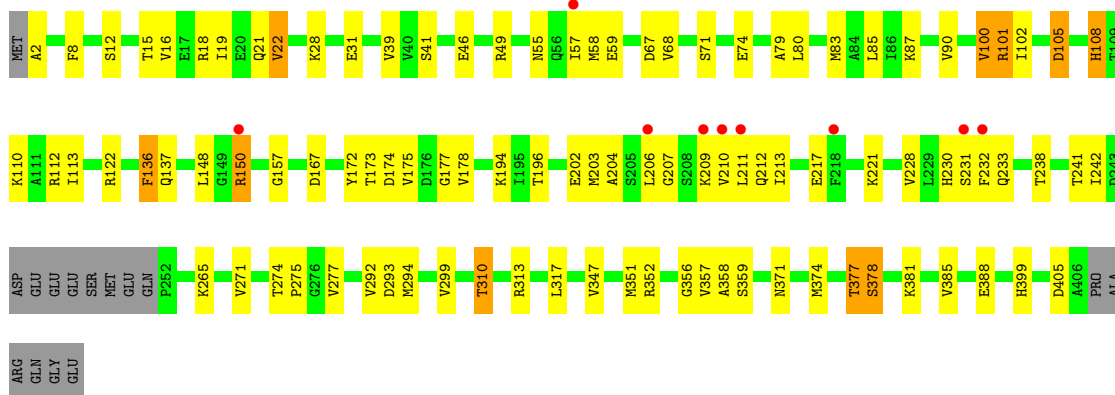
Mol	Chain	Residues	Atoms			ZeroOcc	AltConf
5	G	1	Total	C	O	0	0
			6	3	3		
5	E	1	Total	C	O	0	0
			6	3	3		
5	E	1	Total	C	O	0	0
			6	3	3		

- Molecule 6 is water.

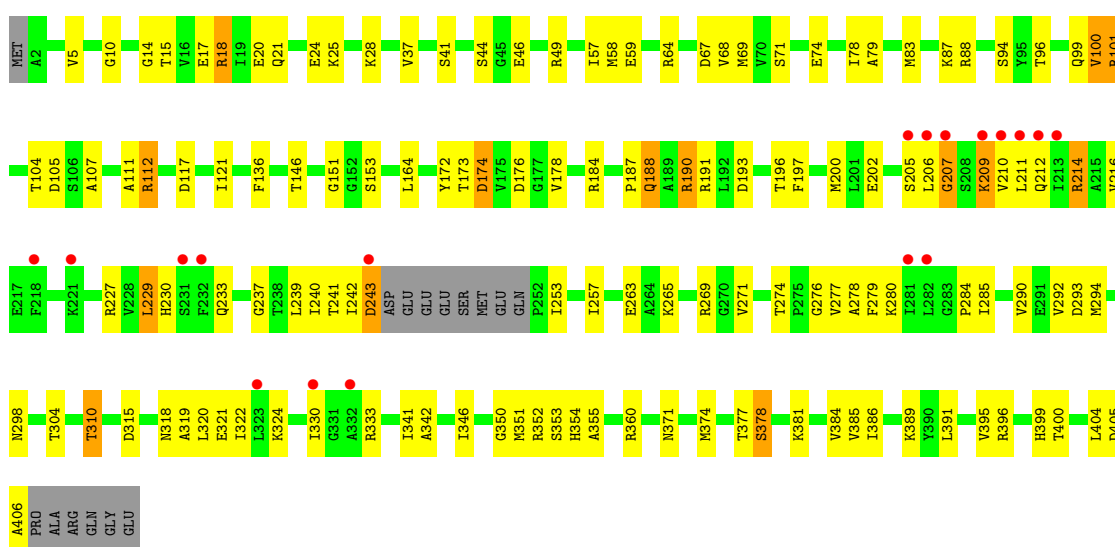
Mol	Chain	Residues	Atoms		ZeroOcc	AltConf
6	D	13	Total	O	0	0
			13	13		
6	B	13	Total	O	0	0
			13	13		
6	F	7	Total	O	0	0
			7	7		
6	C	36	Total	O	0	0
			36	36		
6	H	10	Total	O	0	0
			10	10		
6	G	34	Total	O	0	0
			34	34		
6	A	42	Total	O	0	0
			42	42		
6	E	21	Total	O	0	0
			21	21		



• Molecule 2: Aspartokinase

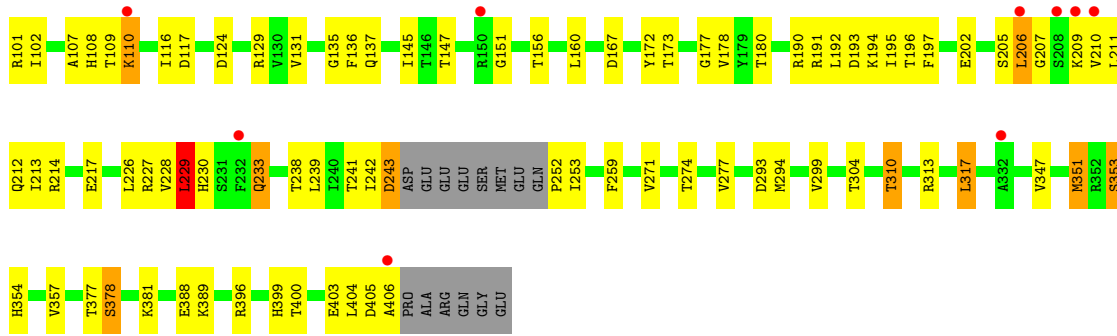


• Molecule 2: Aspartokinase

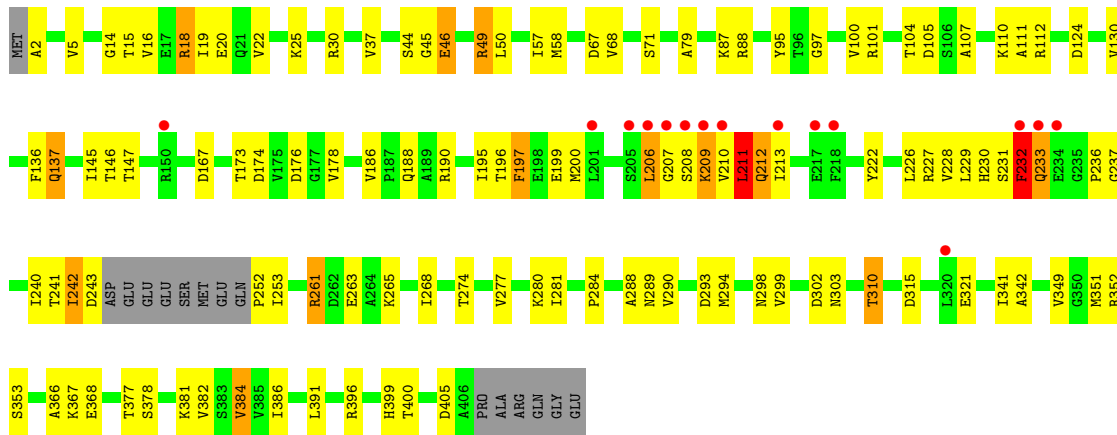


• Molecule 2: Aspartokinase





• Molecule 2: Aspartokinase



4 Data and refinement statistics

Property	Value	Source
Space group	P 1 21 1	Depositor
Cell constants a, b, c, α , β , γ	82.46Å 171.79Å 88.93Å 90.00° 90.29° 90.00°	Depositor
Resolution (Å)	40.09 – 2.30 40.09 – 2.30	Depositor EDS
% Data completeness (in resolution range)	97.7 (40.09-2.30) 96.8 (40.09-2.30)	Depositor EDS
R_{merge}	(Not available)	Depositor
R_{sym}	0.08	Depositor
$\langle I/\sigma(I) \rangle$ ¹	2.89 (at 2.29Å)	Xtrriage
Refinement program	PHENIX 1.10.1-2155_1692	Depositor
R, R_{free}	0.222 , 0.257 0.222 , 0.257	Depositor DCC
R_{free} test set	5272 reflections (4.93%)	wwPDB-VP
Wilson B-factor (Å ²)	37.5	Xtrriage
Anisotropy	0.420	Xtrriage
Bulk solvent k_{sol} (e/Å ³), B_{sol} (Å ²)	0.33 , 31.1	EDS
L-test for twinning ²	$\langle L \rangle = 0.46$, $\langle L^2 \rangle = 0.28$	Xtrriage
Estimated twinning fraction	0.267 for h,-k,-l	Xtrriage
F_o, F_c correlation	0.94	EDS
Total number of atoms	16949	wwPDB-VP
Average B, all atoms (Å ²)	52.0	wwPDB-VP

Xtrriage's analysis on translational NCS is as follows: *The largest off-origin peak in the Patterson function is 2.99% of the height of the origin peak. No significant pseudotranslation is detected.*

¹Intensities estimated from amplitudes.

²Theoretical values of $\langle |L| \rangle$, $\langle L^2 \rangle$ for acentric reflections are 0.5, 0.333 respectively for untwinned datasets, and 0.375, 0.2 for perfectly twinned datasets.

5 Model quality [i](#)

5.1 Standard geometry [i](#)

Bond lengths and bond angles in the following residue types are not validated in this section: GOL

The Z score for a bond length (or angle) is the number of standard deviations the observed value is removed from the expected value. A bond length (or angle) with $|Z| > 5$ is considered an outlier worth inspection. RMSZ is the root-mean-square of all Z scores of the bond lengths (or angles).

Mol	Chain	Bond lengths		Bond angles	
		RMSZ	# Z >5	RMSZ	# Z >5
1	B	0.79	0/1193	0.81	0/1618
1	D	0.73	0/1193	0.86	2/1618 (0.1%)
1	F	0.80	0/1159	0.88	3/1570 (0.2%)
1	H	0.89	0/1193	0.93	3/1618 (0.2%)
2	A	0.85	0/3028	0.87	2/4102 (0.0%)
2	C	0.77	0/3028	0.83	3/4102 (0.1%)
2	E	0.83	1/3028 (0.0%)	0.87	3/4102 (0.1%)
2	G	0.87	1/3028 (0.0%)	0.86	3/4102 (0.1%)
All	All	0.82	2/16850 (0.0%)	0.86	19/22832 (0.1%)

All (2) bond length outliers are listed below:

Mol	Chain	Res	Type	Atoms	Z	Observed(Å)	Ideal(Å)
2	E	197	PHE	CE1-CZ	-5.37	1.27	1.37
2	G	350	GLY	C-O	-5.08	1.15	1.23

All (19) bond angle outliers are listed below:

Mol	Chain	Res	Type	Atoms	Z	Observed(°)	Ideal(°)
1	H	405	ASP	CB-CG-OD2	-12.62	106.94	118.30
1	H	368	GLU	N-CA-C	-7.10	91.84	111.00
2	E	367	LYS	CD-CE-NZ	-6.99	95.62	111.70
1	H	405	ASP	CB-CG-OD1	6.88	124.49	118.30
1	F	350	GLY	N-CA-C	-6.55	96.72	113.10
1	D	368	GLU	N-CA-C	-6.53	93.36	111.00
2	C	108	HIS	N-CA-C	6.48	128.49	111.00
2	C	136	PHE	CB-CA-C	6.14	122.67	110.40
2	G	101	ARG	N-CA-CB	5.94	121.30	110.60
2	G	207	GLY	N-CA-C	-5.91	98.32	113.10
1	F	317	LEU	CB-CG-CD1	-5.88	101.00	111.00

Continued on next page...

Continued from previous page...

Mol	Chain	Res	Type	Atoms	Z	Observed(°)	Ideal(°)
2	A	317	LEU	CA-CB-CG	-5.76	102.05	115.30
2	E	211	LEU	N-CA-C	-5.74	95.51	111.00
2	A	229	LEU	CA-CB-CG	5.68	128.37	115.30
2	E	232	PHE	N-CA-C	5.45	125.71	111.00
1	D	381	LYS	CD-CE-NZ	5.22	123.72	111.70
1	F	396	ARG	NE-CZ-NH2	-5.22	117.69	120.30
2	C	100	VAL	C-N-CA	5.17	134.62	121.70
2	G	274	THR	C-N-CD	5.02	138.94	128.40

There are no chirality outliers.

There are no planarity outliers.

5.2 Too-close contacts [i](#)

In the following table, the Non-H and H(model) columns list the number of non-hydrogen atoms and hydrogen atoms in the chain respectively. The H(added) column lists the number of hydrogen atoms added and optimized by MolProbity. The Clashes column lists the number of clashes within the asymmetric unit, whereas Symm-Clashes lists symmetry-related clashes.

Mol	Chain	Non-H	H(model)	H(added)	Clashes	Symm-Clashes
1	B	1178	0	1194	44	0
1	D	1178	0	1194	36	0
1	F	1145	0	1168	66	0
1	H	1178	0	1194	74	0
2	A	2993	0	3069	118	0
2	C	2993	0	3067	137	0
2	E	2993	0	3069	146	0
2	G	2993	0	3068	190	0
3	A	8	0	6	1	0
3	B	8	0	6	0	0
3	C	8	0	6	1	0
3	D	8	0	6	3	0
3	F	16	0	12	4	0
3	G	8	0	6	11	0
3	H	8	0	6	2	0
4	A	10	0	12	4	0
4	C	10	0	12	38	0
4	E	10	0	12	4	0
4	G	10	0	12	7	0
5	E	12	0	16	0	0
5	G	6	0	8	1	0

Continued on next page...

Continued from previous page...

Mol	Chain	Non-H	H(model)	H(added)	Clashes	Symm-Clashes
6	A	42	0	0	4	0
6	B	13	0	0	4	0
6	C	36	0	0	2	0
6	D	13	0	0	2	0
6	E	21	0	0	3	0
6	F	7	0	0	3	0
6	G	34	0	0	5	0
6	H	10	0	0	1	0
All	All	16949	0	17143	738	0

The all-atom clashscore is defined as the number of clashes found per 1000 atoms (including hydrogen atoms). The all-atom clashscore for this structure is 22.

All (738) close contacts within the same asymmetric unit are listed below, sorted by their clash magnitude.

Atom-1	Atom-2	Interatomic distance (Å)	Clash overlap (Å)
2:G:277:VAL:CG1	3:G:503:THR:HG23	1.10	1.58
2:C:358:ALA:N	4:C:502:LYS:HG3	1.18	1.45
2:C:358:ALA:H	4:C:502:LYS:CG	1.27	1.44
2:G:277:VAL:CG1	3:G:503:THR:CG2	1.97	1.41
2:C:87:LYS:NZ	2:A:57:ILE:O	1.59	1.33
2:G:188:GLN:CG	2:G:406:ALA:O	1.80	1.29
2:G:277:VAL:HG13	3:G:503:THR:CG2	1.60	1.28
2:A:2:ALA:HB1	2:A:167:ASP:OD2	1.24	1.28
1:H:253:ILE:CD1	1:H:405:ASP:OD2	1.82	1.26
6:B:605:HOH:O	1:F:261:ARG:HD3	1.37	1.24
2:G:277:VAL:HG12	3:G:503:THR:CG2	1.64	1.23
2:C:357:VAL:N	4:C:502:LYS:HG2	1.55	1.20
1:F:253:ILE:CD1	1:F:403:GLU:HG2	1.69	1.19
2:C:46:GLU:OE1	2:C:49:ARG:NH1	1.77	1.16
2:C:357:VAL:H	4:C:502:LYS:CB	1.58	1.16
1:B:261:ARG:H	1:F:261:ARG:NH2	1.42	1.15
1:F:253:ILE:HD13	1:F:403:GLU:HG2	1.25	1.15
2:E:197:PHE:CD2	2:E:242:ILE:HG12	1.83	1.14
2:C:356:GLY:C	4:C:502:LYS:HG2	1.69	1.12
2:G:351:MET:CE	4:G:502:LYS:HE3	1.80	1.11
2:G:57:ILE:HD11	2:E:16:VAL:HG13	1.19	1.09
2:G:188:GLN:HG3	2:G:406:ALA:O	0.93	1.09
2:C:357:VAL:N	4:C:502:LYS:CG	2.16	1.08
2:A:351:MET:CE	4:A:501:LYS:HE3	1.83	1.08
2:E:15:THR:HG22	2:E:18:ARG:HB2	1.34	1.08

Continued on next page...

Continued from previous page...

Atom-1	Atom-2	Interatomic distance (Å)	Clash overlap (Å)
2:G:278:ALA:N	3:G:503:THR:HG22	1.68	1.07
2:E:229:LEU:CD2	2:E:237:GLY:HA3	1.86	1.06
2:C:399:HIS:HD2	2:C:405:ASP:OD1	1.36	1.06
2:C:358:ALA:N	4:C:502:LYS:CG	1.95	1.05
2:C:357:VAL:N	4:C:502:LYS:CB	2.20	1.04
1:B:351:MET:HG2	1:B:379:GLU:HG3	1.36	1.04
1:H:253:ILE:HD11	1:H:405:ASP:OD2	0.85	1.03
2:G:57:ILE:CD1	2:E:16:VAL:HG13	1.88	1.03
2:E:351:MET:CE	4:E:503:LYS:HE3	1.89	1.03
2:E:229:LEU:HD23	2:E:237:GLY:HA3	1.37	1.02
1:H:253:ILE:HD11	1:H:405:ASP:CG	1.80	1.01
2:E:197:PHE:HD2	2:E:242:ILE:HG12	1.21	1.01
2:G:214:ARG:H	2:G:214:ARG:HD3	1.27	1.00
2:G:277:VAL:HG13	3:G:503:THR:HG23	1.19	1.00
2:E:15:THR:HG23	2:E:18:ARG:H	1.27	0.99
2:E:261:ARG:HG2	6:E:608:HOH:O	1.61	0.99
1:F:253:ILE:HD12	1:F:254:ILE:H	1.29	0.98
1:H:377:THR:HG21	2:G:294:MET:HA	1.45	0.98
2:E:178:VAL:HG13	2:E:206:LEU:CD1	1.94	0.97
2:A:136:PHE:CZ	2:A:147:THR:OG1	2.16	0.97
2:G:57:ILE:O	2:E:87:LYS:NZ	1.97	0.96
2:G:212:GLN:HB3	2:G:214:ARG:CZ	1.96	0.96
2:C:357:VAL:H	4:C:502:LYS:HB2	1.29	0.95
2:G:351:MET:HE1	4:G:502:LYS:HE3	1.48	0.95
2:G:278:ALA:H	3:G:503:THR:HG22	1.26	0.95
2:G:211:LEU:HD21	2:G:216:VAL:CG2	1.96	0.95
2:C:2:ALA:HB1	2:C:167:ASP:OD2	1.68	0.94
2:C:359:SER:H	4:C:502:LYS:HE3	1.31	0.93
1:B:261:ARG:H	1:F:261:ARG:HH22	0.96	0.93
2:G:321:GLU:OE2	2:G:324:LYS:HE2	1.69	0.92
2:G:227:ARG:CD	2:G:229:LEU:HD21	1.99	0.92
2:C:356:GLY:HA2	4:C:502:LYS:HE2	1.49	0.92
2:G:277:VAL:HG13	3:G:503:THR:HG21	1.51	0.91
2:E:178:VAL:HG13	2:E:206:LEU:HD12	1.49	0.90
2:G:284:PRO:HB2	2:G:322:ILE:HD11	1.52	0.89
2:G:64:ARG:HG2	6:G:617:HOH:O	1.74	0.87
1:F:253:ILE:HD12	1:F:403:GLU:HG2	1.55	0.87
2:C:67:ASP:OD2	2:C:108:HIS:O	1.93	0.87
2:G:351:MET:HE3	4:G:502:LYS:HE3	1.55	0.87
1:F:377:THR:HG21	2:E:294:MET:HA	1.57	0.86
2:C:19:ILE:O	2:C:22:VAL:HG23	1.75	0.86

Continued on next page...

Continued from previous page...

Atom-1	Atom-2	Interatomic distance (Å)	Clash overlap (Å)
2:C:359:SER:N	4:C:502:LYS:HE3	1.91	0.86
2:G:58:MET:HG2	2:E:87:LYS:HZ3	1.38	0.86
2:E:351:MET:HE2	4:E:503:LYS:HE3	1.58	0.86
1:D:250:GLU:N	1:D:360:ARG:HH21	1.72	0.85
1:F:253:ILE:HD12	1:F:254:ILE:N	1.91	0.85
2:A:294:MET:H	2:A:310:THR:HG22	1.41	0.85
1:B:377:THR:HG21	2:A:294:MET:HA	1.59	0.85
2:A:190:ARG:NH2	2:A:404:LEU:O	2.10	0.85
2:E:208:SER:O	2:E:211:LEU:O	1.95	0.84
2:G:41:SER:HA	2:G:74:GLU:HG3	1.59	0.83
1:B:261:ARG:N	1:F:261:ARG:NH2	2.27	0.82
2:G:212:GLN:HE21	2:G:214:ARG:HH12	1.27	0.82
2:C:28:LYS:O	2:C:31:GLU:HG2	1.80	0.82
1:H:252:PRO:O	1:H:403:GLU:CD	2.18	0.82
1:D:260:ASN:ND2	1:H:261:ARG:NH2	2.27	0.82
2:C:359:SER:H	4:C:502:LYS:CE	1.92	0.82
2:E:197:PHE:CE2	2:E:242:ILE:HG12	2.15	0.82
2:C:357:VAL:HB	4:C:502:LYS:HB3	1.61	0.81
2:G:211:LEU:HD21	2:G:216:VAL:HG23	1.61	0.81
2:A:351:MET:HE2	4:A:501:LYS:HE3	1.59	0.81
2:C:274:THR:CG2	2:C:275:PRO:HD2	2.11	0.81
1:H:284:PRO:HB2	1:H:322:ILE:HD11	1.63	0.80
2:G:321:GLU:OE2	2:G:324:LYS:CE	2.29	0.80
1:F:253:ILE:HD13	1:F:403:GLU:CG	2.11	0.80
2:C:399:HIS:CD2	2:C:405:ASP:OD1	2.29	0.80
1:H:267:THR:HG23	1:H:308:THR:HG22	1.62	0.80
1:B:261:ARG:N	1:F:261:ARG:HH22	1.78	0.80
2:G:196:THR:HA	2:G:241:THR:O	1.81	0.80
2:G:214:ARG:HD3	2:G:214:ARG:N	1.97	0.79
2:E:49:ARG:HD2	2:E:49:ARG:C	2.02	0.78
2:C:358:ALA:CA	4:C:502:LYS:HG3	2.13	0.78
6:B:605:HOH:O	1:F:261:ARG:CD	2.08	0.78
2:A:57:ILE:HG22	2:A:58:MET:HG3	1.65	0.78
1:D:403:GLU:OE1	1:D:403:GLU:HA	1.83	0.77
2:G:173:THR:OG1	2:G:210:VAL:HG21	1.84	0.77
2:C:19:ILE:HA	2:C:22:VAL:CG2	2.14	0.77
2:E:229:LEU:CD2	2:E:237:GLY:CA	2.62	0.77
1:D:351:MET:HG2	1:D:379:GLU:HG3	1.65	0.77
2:G:277:VAL:HG12	3:G:503:THR:HG23	0.78	0.77
2:A:209:LYS:O	2:A:212:GLN:OE1	2.03	0.77
2:G:68:VAL:CG2	2:E:79:ALA:HB2	2.14	0.77

Continued on next page...

Continued from previous page...

Atom-1	Atom-2	Interatomic distance (Å)	Clash overlap (Å)
2:C:293:ASP:HB3	2:C:310:THR:HG22	1.67	0.76
2:G:187:PRO:HG2	6:G:618:HOH:O	1.85	0.76
2:G:57:ILE:CD1	2:E:16:VAL:CG1	2.63	0.76
2:E:231:SER:HB2	2:E:232:PHE:CE1	2.21	0.76
2:E:15:THR:CG2	2:E:18:ARG:H	1.99	0.76
2:G:104:THR:HG21	2:G:146:THR:OG1	1.85	0.76
2:C:274:THR:O	3:C:501:THR:HA	1.86	0.75
2:A:151:GLY:HA3	2:A:212:GLN:HG3	1.68	0.75
1:F:254:ILE:O	1:F:254:ILE:HD12	1.86	0.75
2:C:87:LYS:NZ	2:A:58:MET:HG2	2.01	0.75
2:C:68:VAL:HG22	2:A:79:ALA:HB2	1.68	0.74
2:E:104:THR:HG21	2:E:146:THR:OG1	1.87	0.74
2:G:399:HIS:ND1	2:G:405:ASP:OD1	2.19	0.74
1:B:250:GLU:HA	1:B:401:ALA:O	1.88	0.74
2:G:351:MET:HE3	4:G:502:LYS:HB2	1.67	0.74
2:A:274:THR:O	3:A:502:THR:HA	1.87	0.74
2:E:197:PHE:CE2	2:E:242:ILE:CG1	2.71	0.74
2:C:178:VAL:HG23	2:C:206:LEU:HG	1.71	0.73
2:G:212:GLN:HE21	2:G:212:GLN:HA	1.53	0.73
2:E:212:GLN:HA	2:E:212:GLN:OE1	1.88	0.73
2:E:178:VAL:CG1	2:E:206:LEU:HD12	2.18	0.73
2:G:173:THR:OG1	2:G:210:VAL:CG2	2.37	0.73
1:D:271:VAL:CG1	1:D:277:VAL:HG11	2.19	0.73
2:G:278:ALA:N	3:G:503:THR:CG2	2.49	0.72
2:E:261:ARG:CG	6:E:608:HOH:O	2.27	0.72
2:C:196:THR:HA	2:C:241:THR:O	1.89	0.72
2:E:15:THR:CG2	2:E:18:ARG:HB2	2.17	0.72
1:F:295:ILE:H	2:E:377:THR:HG21	1.54	0.72
2:C:274:THR:HG23	2:C:275:PRO:HD2	1.71	0.72
1:B:379:GLU:HB2	2:A:202:GLU:OE2	1.88	0.72
1:D:262:ASP:OD1	1:D:313:ARG:HB2	1.90	0.72
2:G:87:LYS:HE3	2:E:57:ILE:CD1	2.20	0.72
2:G:212:GLN:HE21	2:G:214:ARG:NH1	1.87	0.71
1:F:324:LYS:HE2	1:F:335:ALA:O	1.89	0.71
2:E:173:THR:OG1	2:E:210:VAL:HG21	1.91	0.71
2:E:49:ARG:HD2	2:E:49:ARG:O	1.89	0.71
1:D:349:VAL:HG13	1:D:357:VAL:HG21	1.71	0.71
3:D:501:THR:O	6:D:601:HOH:O	2.08	0.70
2:G:284:PRO:CB	2:G:322:ILE:HD11	2.19	0.70
2:A:136:PHE:CE1	2:A:147:THR:OG1	2.40	0.70
2:E:15:THR:HG22	2:E:18:ARG:CB	2.18	0.70

Continued on next page...

Continued from previous page...

Atom-1	Atom-2	Interatomic distance (Å)	Clash overlap (Å)
2:G:79:ALA:HB2	2:E:68:VAL:CG2	2.21	0.70
2:G:211:LEU:C	2:G:211:LEU:HD23	2.13	0.69
2:A:252:PRO:HA	6:A:620:HOH:O	1.90	0.69
2:C:194:LYS:HZ1	2:C:241:THR:HG23	1.57	0.69
2:G:294:MET:H	2:G:310:THR:HG22	1.57	0.69
2:G:87:LYS:NZ	2:E:58:MET:HA	2.07	0.69
2:E:173:THR:OG1	2:E:174:ASP:N	2.23	0.69
1:B:269:ARG:HH22	1:B:333:ARG:HH21	1.40	0.69
2:G:242:ILE:HD12	2:G:242:ILE:H	1.57	0.69
2:E:15:THR:CG2	2:E:18:ARG:HD3	2.22	0.68
2:C:16:VAL:HG13	2:A:57:ILE:HD11	1.75	0.68
2:C:357:VAL:H	4:C:502:LYS:HB3	1.52	0.68
2:A:19:ILE:O	2:A:22:VAL:HG22	1.93	0.68
1:F:350:GLY:HA3	1:F:352:ARG:NH1	2.08	0.68
1:H:295:ILE:H	2:G:377:THR:HG21	1.57	0.68
2:G:197:PHE:CE2	2:G:242:ILE:HG13	2.29	0.68
2:A:25:LYS:NZ	2:A:233:GLN:HB2	2.09	0.68
2:A:59:GLU:HG2	2:A:60:GLN:N	2.08	0.68
2:E:196:THR:HA	2:E:241:THR:O	1.92	0.68
2:E:342:ALA:HB1	2:E:391:LEU:HD12	1.76	0.68
1:F:294:MET:HA	2:E:377:THR:HG21	1.76	0.68
1:H:291:GLU:OE2	2:G:353:SER:O	2.12	0.68
2:G:87:LYS:HE3	2:E:57:ILE:HD11	1.76	0.68
2:G:197:PHE:HE2	2:G:242:ILE:HG13	1.58	0.68
2:G:293:ASP:HB3	2:G:310:THR:HG22	1.75	0.67
1:H:274:THR:O	3:H:501:THR:HA	1.94	0.67
2:G:209:LYS:HG3	2:G:210:VAL:N	2.07	0.67
2:E:293:ASP:HB3	2:E:310:THR:HG22	1.76	0.67
2:C:358:ALA:N	4:C:502:LYS:HG2	2.02	0.67
2:G:227:ARG:HD3	2:G:229:LEU:HD21	1.76	0.67
2:A:207:GLY:HA3	2:A:213:ILE:HD11	1.76	0.67
2:E:293:ASP:HB3	2:E:310:THR:CG2	2.25	0.67
2:G:96:THR:HG23	2:G:99:GLN:H	1.58	0.67
2:G:151:GLY:HA3	2:G:212:GLN:HG3	1.76	0.66
2:G:293:ASP:HB3	2:G:310:THR:CG2	2.24	0.66
2:E:399:HIS:ND1	2:E:405:ASP:OD1	2.24	0.66
1:D:254:ILE:HD13	1:D:346:ILE:HG23	1.75	0.66
2:G:212:GLN:NE2	2:G:214:ARG:HH22	1.93	0.66
2:E:95:TYR:OH	2:E:124:ASP:OD2	2.07	0.66
2:E:263:GLU:OE1	2:E:310:THR:HG21	1.94	0.66
1:B:295:ILE:H	2:A:377:THR:HG21	1.61	0.66

Continued on next page...

Continued from previous page...

Atom-1	Atom-2	Interatomic distance (Å)	Clash overlap (Å)
2:C:274:THR:CG2	2:C:275:PRO:CD	2.72	0.66
2:E:25:LYS:NZ	2:E:233:GLN:HB3	2.09	0.66
2:E:277:VAL:O	2:E:281:ILE:HG13	1.95	0.66
2:G:212:GLN:NE2	2:G:214:ARG:HH12	1.94	0.66
1:H:399:HIS:HD2	1:H:404:LEU:HD13	1.61	0.66
1:B:378:SER:OG	2:A:202:GLU:OE1	2.14	0.65
1:D:379:GLU:HB2	2:C:202:GLU:OE2	1.96	0.65
2:C:274:THR:HG22	2:C:275:PRO:HD2	1.77	0.65
2:E:229:LEU:HD21	2:E:237:GLY:HA3	1.78	0.65
1:F:298:ASN:OD1	1:F:299:VAL:N	2.26	0.65
2:G:227:ARG:CG	2:G:229:LEU:HD21	2.26	0.65
1:F:348:GLY:HA2	6:F:603:HOH:O	1.95	0.65
2:G:57:ILE:HD11	2:E:16:VAL:CG1	2.11	0.65
2:A:241:THR:OG1	2:A:242:ILE:N	2.29	0.65
1:F:292:VAL:O	4:E:503:LYS:HG2	1.97	0.65
1:D:377:THR:HG21	2:C:294:MET:HA	1.79	0.65
2:G:214:ARG:H	2:G:214:ARG:CD	2.08	0.65
2:A:68:VAL:HG22	2:A:145:ILE:HD12	1.78	0.65
2:A:293:ASP:HB3	2:A:310:THR:CG2	2.28	0.64
2:A:25:LYS:HE3	2:A:29:PHE:HE1	1.62	0.64
2:E:136:PHE:CZ	2:E:147:THR:HB	2.33	0.64
2:C:173:THR:OG1	2:C:174:ASP:N	2.29	0.64
2:C:194:LYS:NZ	2:C:241:THR:HG23	2.12	0.64
2:C:207:GLY:HA3	2:C:213:ILE:HD11	1.80	0.64
2:C:79:ALA:CB	2:A:69:MET:HG3	2.28	0.64
2:E:5:VAL:HG22	2:E:37:VAL:HB	1.80	0.64
2:E:105:ASP:HB2	2:E:112:ARG:H	1.61	0.64
2:E:242:ILE:O	2:E:243:ASP:HB2	1.97	0.64
2:A:210:VAL:HG13	2:A:211:LEU:N	2.11	0.64
1:D:392:GLU:CD	1:D:392:GLU:H	2.01	0.63
2:A:351:MET:HE3	4:A:501:LYS:HE3	1.75	0.63
2:E:15:THR:HG22	2:E:18:ARG:HD3	1.79	0.63
2:E:25:LYS:HZ3	2:E:233:GLN:HB3	1.62	0.63
1:B:392:GLU:CD	1:B:392:GLU:H	2.00	0.63
2:C:2:ALA:CB	2:C:167:ASP:OD2	2.44	0.63
2:C:71:SER:O	2:C:137:GLN:NE2	2.31	0.63
1:H:253:ILE:HG23	1:H:253:ILE:O	1.99	0.63
1:H:404:LEU:HD12	1:H:404:LEU:N	2.13	0.62
2:E:197:PHE:CD2	2:E:242:ILE:CG1	2.73	0.62
1:B:259:PHE:CD2	1:B:391:LEU:HD21	2.35	0.62
1:B:294:MET:HA	2:A:377:THR:HG21	1.81	0.62

Continued on next page...

Continued from previous page...

Atom-1	Atom-2	Interatomic distance (Å)	Clash overlap (Å)
1:H:252:PRO:HG3	1:H:360:ARG:HD3	1.82	0.62
2:G:212:GLN:HA	2:G:212:GLN:NE2	2.13	0.62
2:G:320:LEU:O	2:G:324:LYS:HG3	2.00	0.61
2:A:110:LYS:HD2	6:A:630:HOH:O	2.00	0.61
1:B:259:PHE:HD2	1:B:391:LEU:HD21	1.64	0.61
2:E:288:ALA:O	2:E:289:ASN:HB2	2.00	0.61
2:A:67:ASP:OD1	2:A:147:THR:HG22	1.99	0.61
2:A:213:ILE:O	2:A:217:GLU:HG3	2.01	0.61
2:E:229:LEU:HD23	2:E:237:GLY:CA	2.22	0.61
2:G:87:LYS:NZ	2:E:58:MET:CG	2.64	0.61
2:A:59:GLU:CD	2:A:59:GLU:H	2.03	0.61
2:E:263:GLU:OE1	2:E:310:THR:CG2	2.49	0.61
2:C:173:THR:OG1	2:C:210:VAL:HG21	2.00	0.61
1:H:378:SER:OG	2:G:202:GLU:OE1	2.19	0.61
2:E:197:PHE:HE2	2:E:242:ILE:CG1	2.14	0.61
2:A:67:ASP:OD2	2:A:108:HIS:O	2.19	0.60
1:H:252:PRO:HB3	1:H:360:ARG:NH1	2.16	0.60
2:A:227:ARG:HG2	2:A:229:LEU:CD1	2.32	0.60
2:C:79:ALA:HB3	2:A:69:MET:CG	2.30	0.60
1:H:252:PRO:O	1:H:403:GLU:OE2	2.20	0.60
1:D:378:SER:OG	2:C:202:GLU:OE1	2.19	0.60
2:A:46:GLU:OE1	2:A:49:ARG:NH1	2.34	0.60
2:A:242:ILE:O	2:A:243:ASP:HB2	2.01	0.60
1:F:348:GLY:CA	6:F:603:HOH:O	2.48	0.60
2:C:46:GLU:CD	2:C:49:ARG:HH11	2.05	0.60
2:E:197:PHE:HE2	2:E:242:ILE:HG13	1.67	0.60
2:C:357:VAL:CB	4:C:502:LYS:HB3	2.32	0.60
2:G:227:ARG:HG2	2:G:229:LEU:CD2	2.31	0.60
2:G:351:MET:HE1	4:G:502:LYS:CE	2.29	0.60
2:A:178:VAL:CG1	2:A:238:THR:HG21	2.32	0.60
1:H:252:PRO:HG3	1:H:360:ARG:CD	2.31	0.59
2:G:104:THR:OG1	2:G:111:ALA:HB1	2.02	0.59
1:H:250:GLU:CB	1:H:403:GLU:HB3	2.31	0.59
2:C:174:ASP:O	2:C:230:HIS:ND1	2.34	0.59
1:H:251:GLN:C	1:H:403:GLU:OE2	2.41	0.59
2:C:274:THR:HG22	2:C:275:PRO:CD	2.33	0.59
2:A:197:PHE:CD2	2:A:242:ILE:HG23	2.38	0.59
2:G:285:ILE:HD13	2:G:322:ILE:HD13	1.84	0.59
1:H:403:GLU:O	1:H:403:GLU:HG2	2.01	0.59
2:E:207:GLY:HA3	2:E:213:ILE:HD11	1.84	0.59
1:D:250:GLU:N	1:D:360:ARG:NH2	2.49	0.58

Continued on next page...

Continued from previous page...

Atom-1	Atom-2	Interatomic distance (Å)	Clash overlap (Å)
2:E:104:THR:OG1	2:E:111:ALA:HB1	2.03	0.58
1:F:261:ARG:H	1:F:261:ARG:NE	2.01	0.58
2:A:190:ARG:NH2	2:A:406:ALA:HB3	2.17	0.58
1:B:261:ARG:HD3	1:F:262:ASP:OD2	2.03	0.58
2:G:227:ARG:HG2	2:G:229:LEU:HD21	1.84	0.58
2:C:19:ILE:HA	2:C:22:VAL:HG23	1.85	0.58
2:A:59:GLU:HG2	2:A:60:GLN:H	1.68	0.58
2:G:68:VAL:HG23	2:E:79:ALA:HB2	1.86	0.58
2:C:105:ASP:HB2	2:C:112:ARG:H	1.68	0.58
1:H:351:MET:HE1	1:H:379:GLU:CG	2.34	0.58
2:G:20:GLU:CD	2:E:57:ILE:HD13	2.24	0.57
2:G:200:MET:HE2	2:G:240:ILE:HD11	1.84	0.57
1:D:265:LYS:HE3	2:C:299:VAL:HG11	1.85	0.57
1:D:405:ASP:OD2	2:C:221:LYS:HE2	2.04	0.57
2:C:79:ALA:HB3	2:A:69:MET:HG3	1.86	0.57
2:G:59:GLU:CD	2:G:59:GLU:H	2.07	0.57
2:G:212:GLN:CD	2:G:214:ARG:HH22	2.08	0.57
2:E:294:MET:H	2:E:310:THR:HG22	1.69	0.57
2:G:87:LYS:NZ	2:E:58:MET:HG2	2.19	0.57
2:A:173:THR:HG21	2:A:210:VAL:HG21	1.85	0.57
2:G:191:ARG:NH2	2:G:193:ASP:OD1	2.37	0.57
2:C:178:VAL:CG1	2:C:238:THR:HG21	2.34	0.57
2:C:113:ILE:HD11	2:C:148:LEU:CD1	2.35	0.56
1:F:305:THR:HG23	1:F:306:ASP:O	2.04	0.56
2:G:242:ILE:O	2:G:243:ASP:HB2	2.04	0.56
2:A:15:THR:O	2:A:19:ILE:HG13	2.05	0.56
1:H:389:LYS:HG3	1:H:390:TYR:CD1	2.40	0.56
1:H:389:LYS:HG3	1:H:390:TYR:CE1	2.40	0.56
2:G:351:MET:CE	4:G:502:LYS:CE	2.70	0.56
6:B:605:HOH:O	1:F:261:ARG:HG2	2.06	0.56
2:G:174:ASP:O	2:G:230:HIS:ND1	2.38	0.56
2:E:200:MET:HE2	2:E:240:ILE:HD11	1.88	0.56
2:G:58:MET:CG	2:E:87:LYS:HZ3	2.15	0.56
2:G:200:MET:CE	2:G:240:ILE:HD11	2.36	0.56
1:F:347:VAL:HG12	1:F:348:GLY:N	2.21	0.56
1:F:352:ARG:HG3	1:F:353:SER:OG	2.06	0.56
2:E:15:THR:HG22	2:E:18:ARG:CD	2.35	0.56
2:A:37:VAL:HG22	2:A:131:VAL:HG22	1.88	0.56
1:H:318:ASN:O	1:H:322:ILE:HG22	2.06	0.56
2:G:321:GLU:OE2	2:G:321:GLU:HA	2.06	0.56
2:A:313:ARG:HH12	2:A:388:GLU:CD	2.09	0.56

Continued on next page...

Continued from previous page...

Atom-1	Atom-2	Interatomic distance (Å)	Clash overlap (Å)
1:B:262:ASP:O	1:B:263:GLU:HG2	2.06	0.55
1:H:252:PRO:O	1:H:403:GLU:CG	2.53	0.55
1:H:252:PRO:HD3	1:H:360:ARG:NE	2.21	0.55
2:G:284:PRO:C	2:G:322:ILE:HD11	2.27	0.55
3:F:501:THR:HA	2:E:274:THR:O	2.07	0.55
2:C:358:ALA:HB3	4:C:502:LYS:HD2	1.87	0.55
1:D:251:GLN:H	1:D:252:PRO:CD	2.19	0.55
2:G:58:MET:HA	2:E:87:LYS:NZ	2.20	0.55
2:A:16:VAL:O	2:A:20:GLU:HG3	2.07	0.55
1:H:351:MET:CE	1:H:379:GLU:HG3	2.37	0.55
2:E:290:VAL:HG13	2:E:315:ASP:HB3	1.89	0.55
2:C:293:ASP:HB3	2:C:310:THR:CG2	2.37	0.55
2:E:378:SER:HB3	2:E:381:LYS:HB3	1.88	0.55
2:G:405:ASP:O	2:G:406:ALA:HB2	2.05	0.55
2:A:293:ASP:HB3	2:A:310:THR:HG22	1.88	0.55
2:A:191:ARG:NH2	2:A:193:ASP:OD1	2.40	0.55
1:H:372:ILE:O	3:G:503:THR:N	2.39	0.55
2:G:276:GLY:O	2:G:280:LYS:HG3	2.06	0.55
1:B:269:ARG:HH22	1:B:333:ARG:NH2	2.05	0.54
2:C:19:ILE:C	2:C:22:VAL:HG23	2.26	0.54
1:H:366:ALA:O	1:H:368:GLU:O	2.24	0.54
2:G:104:THR:HG23	2:G:105:ASP:O	2.07	0.54
1:B:265:LYS:HE3	2:A:299:VAL:HG11	1.89	0.54
2:G:57:ILE:HD13	2:E:16:VAL:CG1	2.37	0.54
2:A:180:THR:HG21	2:A:404:LEU:HB3	1.88	0.54
1:D:271:VAL:HG11	1:D:277:VAL:HG11	1.90	0.54
1:B:349:VAL:HG13	1:B:357:VAL:HG21	1.89	0.54
2:G:374:MET:HB2	2:G:385:VAL:HB	1.89	0.54
1:D:352:ARG:H	1:D:352:ARG:CD	2.18	0.54
2:E:274:THR:O	2:E:277:VAL:HG13	2.07	0.54
1:H:399:HIS:CD2	1:H:404:LEU:HD13	2.41	0.54
2:C:356:GLY:N	4:C:502:LYS:HB2	2.22	0.54
2:A:2:ALA:CB	2:A:167:ASP:OD2	2.21	0.54
2:C:113:ILE:HD11	2:C:148:LEU:HD11	1.90	0.53
2:C:357:VAL:N	4:C:502:LYS:HB3	2.11	0.53
1:H:265:LYS:HB2	1:H:341:ILE:HD13	1.90	0.53
2:G:20:GLU:OE1	2:G:88:ARG:NH1	2.25	0.53
2:C:358:ALA:H	4:C:502:LYS:HG3	0.41	0.53
2:G:105:ASP:HB2	2:G:112:ARG:H	1.73	0.53
1:D:286:SER:HB2	4:C:502:LYS:NZ	2.22	0.53
1:D:352:ARG:H	1:D:352:ARG:HD3	1.73	0.53

Continued on next page...

Continued from previous page...

Atom-1	Atom-2	Interatomic distance (Å)	Clash overlap (Å)
2:C:233:GLN:O	2:C:233:GLN:NE2	2.40	0.53
2:C:242:ILE:O	2:C:242:ILE:HG23	2.08	0.53
1:H:368:GLU:OE2	1:H:368:GLU:HA	2.08	0.53
2:A:210:VAL:CG1	2:A:211:LEU:N	2.72	0.53
2:E:45:GLY:O	2:E:49:ARG:HB2	2.08	0.53
2:C:274:THR:HG23	2:C:275:PRO:CD	2.36	0.53
1:H:308:THR:HG23	2:G:298:ASN:HD21	1.74	0.53
2:C:357:VAL:CA	4:C:502:LYS:HG2	2.38	0.53
2:A:271:VAL:HG13	2:A:277:VAL:HG11	1.89	0.53
1:D:286:SER:HB2	4:C:502:LYS:HZ3	1.74	0.53
2:C:18:ARG:O	2:C:22:VAL:HG22	2.09	0.53
1:F:372:ILE:N	3:F:501:THR:O	2.29	0.52
2:A:173:THR:OG1	2:A:210:VAL:HG23	2.09	0.52
1:F:265:LYS:HB2	1:F:341:ILE:HD13	1.92	0.52
1:F:350:GLY:CA	1:F:352:ARG:NH1	2.73	0.52
1:F:374:MET:HB2	1:F:385:VAL:HB	1.92	0.52
2:C:16:VAL:HG23	6:C:608:HOH:O	2.09	0.52
2:G:212:GLN:HB3	2:G:214:ARG:NH1	2.24	0.52
2:E:104:THR:HG23	2:E:105:ASP:O	2.08	0.52
2:A:100:VAL:HG13	2:A:102:ILE:HG13	1.90	0.52
2:E:396:ARG:O	2:E:400:THR:HG23	2.10	0.52
2:C:351:MET:O	4:C:502:LYS:OXT	2.28	0.52
2:C:357:VAL:CA	4:C:502:LYS:CG	2.87	0.52
2:E:15:THR:HG21	2:E:18:ARG:HD3	1.91	0.52
2:E:174:ASP:O	2:E:230:HIS:CD2	2.63	0.52
1:B:389:LYS:HE3	1:B:390:TYR:CZ	2.43	0.52
3:H:501:THR:N	2:G:371:ASN:OD1	2.43	0.52
1:D:349:VAL:CG1	1:D:357:VAL:HG21	2.40	0.52
2:A:173:THR:OG1	2:A:210:VAL:CG2	2.57	0.52
2:A:357:VAL:N	4:A:501:LYS:OXT	2.43	0.52
1:D:253:ILE:HG23	1:D:253:ILE:O	2.10	0.52
1:H:294:MET:HA	2:G:377:THR:HG21	1.92	0.52
2:G:206:LEU:O	2:G:207:GLY:C	2.45	0.52
1:H:252:PRO:O	1:H:403:GLU:HG2	2.10	0.52
2:G:78:ILE:HD12	2:G:94:SER:HB2	1.92	0.52
2:G:227:ARG:HD2	2:G:229:LEU:HD21	1.88	0.52
2:E:174:ASP:C	2:E:230:HIS:CD2	2.82	0.52
1:H:253:ILE:CD1	1:H:405:ASP:CG	2.57	0.51
1:H:368:GLU:HB3	1:H:393:LEU:HD11	1.91	0.51
2:G:227:ARG:CG	2:G:229:LEU:CD2	2.88	0.51
6:B:605:HOH:O	1:F:261:ARG:CG	2.50	0.51

Continued on next page...

Continued from previous page...

Atom-1	Atom-2	Interatomic distance (Å)	Clash overlap (Å)
2:C:203:MET:HG3	2:C:347:VAL:HG21	1.91	0.51
2:C:209:LYS:O	2:C:212:GLN:NE2	2.42	0.51
2:C:358:ALA:CB	4:C:502:LYS:HG3	2.41	0.51
2:G:151:GLY:HA3	2:G:212:GLN:CG	2.41	0.51
2:E:105:ASP:HB3	2:E:107:ALA:H	1.74	0.51
2:E:351:MET:HE1	2:E:382:VAL:HG23	1.93	0.51
2:A:194:LYS:HG2	2:A:239:LEU:HB3	1.91	0.51
1:F:354:HIS:CE1	1:F:378:SER:O	2.63	0.51
3:F:501:THR:HB	2:E:277:VAL:HG22	1.91	0.51
2:G:79:ALA:HB2	2:E:68:VAL:HG23	1.92	0.51
2:C:67:ASP:O	2:C:71:SER:HB3	2.10	0.51
2:G:41:SER:HB3	2:G:153:SER:OG	2.11	0.51
2:E:232:PHE:O	2:E:233:GLN:HG3	2.10	0.51
2:A:107:ALA:HB1	2:A:110:LYS:HE2	1.92	0.51
1:F:368:GLU:HA	1:F:368:GLU:OE2	2.12	0.50
2:G:79:ALA:O	2:G:83:MET:HG3	2.10	0.50
2:G:227:ARG:NH2	2:G:239:LEU:HD13	2.25	0.50
2:C:357:VAL:N	4:C:502:LYS:HB2	2.04	0.50
2:E:351:MET:CE	2:E:382:VAL:HG23	2.41	0.50
1:B:381:LYS:HE3	1:B:383:SER:OG	2.11	0.50
1:F:305:THR:CG2	1:F:306:ASP:N	2.74	0.50
2:C:357:VAL:C	4:C:502:LYS:CG	2.73	0.50
1:H:291:GLU:HG3	2:G:355:ALA:HB2	1.94	0.50
2:G:24:GLU:O	2:G:28:LYS:HG3	2.11	0.50
2:E:2:ALA:HB3	2:E:167:ASP:OD2	2.10	0.50
1:D:347:VAL:HG12	1:D:381:LYS:HG2	1.92	0.50
2:C:57:ILE:HG22	2:C:58:MET:HG2	1.94	0.50
2:C:274:THR:HG22	2:C:275:PRO:N	2.26	0.50
2:C:313:ARG:HH22	2:C:388:GLU:CD	2.15	0.50
1:H:251:GLN:N	1:H:252:PRO:HD2	2.27	0.50
2:G:319:ALA:O	2:G:322:ILE:HG23	2.12	0.50
2:E:199:GLU:HG3	2:E:349:VAL:HG13	1.94	0.50
2:C:67:ASP:CG	2:C:108:HIS:O	2.50	0.50
2:C:68:VAL:CG2	2:A:79:ALA:HB2	2.40	0.50
2:A:192:LEU:HD13	2:A:195:ILE:HG21	1.93	0.50
2:E:231:SER:C	2:E:232:PHE:CG	2.85	0.50
1:B:271:VAL:HG12	1:B:305:THR:HG22	1.92	0.50
2:C:19:ILE:CA	2:C:22:VAL:HG23	2.40	0.50
2:C:356:GLY:CA	4:C:502:LYS:HE2	2.33	0.50
1:F:350:GLY:CA	1:F:352:ARG:CZ	2.90	0.49
2:G:319:ALA:HA	2:G:322:ILE:CG2	2.42	0.49

Continued on next page...

Continued from previous page...

Atom-1	Atom-2	Interatomic distance (Å)	Clash overlap (Å)
2:C:347:VAL:HG12	2:C:381:LYS:HG3	1.93	0.49
1:H:370:ILE:HD11	1:H:393:LEU:HD12	1.95	0.49
1:H:399:HIS:HD2	1:H:404:LEU:CD1	2.24	0.49
2:G:378:SER:HB3	2:G:381:LYS:HB3	1.93	0.49
2:C:87:LYS:NZ	2:A:57:ILE:C	2.56	0.49
2:G:46:GLU:OE1	2:G:49:ARG:NH1	2.45	0.49
1:H:271:VAL:HG22	1:H:272:PRO:HD2	1.95	0.49
2:E:252:PRO:HG3	6:E:619:HOH:O	2.12	0.49
2:C:59:GLU:CD	2:C:59:GLU:H	2.16	0.49
2:A:197:PHE:CE2	2:A:242:ILE:HG23	2.48	0.49
1:B:259:PHE:HA	1:B:343:LYS:O	2.13	0.49
2:C:55:ASN:HA	2:C:58:MET:O	2.12	0.49
1:H:389:LYS:CG	1:H:390:TYR:CE1	2.96	0.49
2:G:200:MET:CE	2:G:240:ILE:CD1	2.90	0.49
2:G:389:LYS:HB3	6:G:604:HOH:O	2.13	0.49
2:G:271:VAL:O	2:G:304:THR:HA	2.13	0.49
2:G:396:ARG:O	2:G:400:THR:HG23	2.12	0.49
1:F:361:MET:HG3	1:F:398:LEU:HD21	1.94	0.49
1:F:347:VAL:CG1	1:F:348:GLY:N	2.76	0.48
1:B:378:SER:HB2	2:A:378:SER:HB2	1.94	0.48
2:G:190:ARG:HD2	2:G:406:ALA:HB3	1.95	0.48
2:A:64:ARG:HG2	6:A:619:HOH:O	2.14	0.48
1:B:350:GLY:CA	1:B:352:ARG:HH11	2.27	0.48
1:F:350:GLY:HA2	1:F:352:ARG:NH2	2.29	0.48
2:G:100:VAL:O	2:G:117:ASP:HB2	2.12	0.48
2:E:241:THR:OG1	2:E:242:ILE:N	2.46	0.48
2:E:366:ALA:O	2:E:368:GLU:O	2.31	0.48
2:A:59:GLU:CG	2:A:60:GLN:N	2.76	0.48
2:A:378:SER:HB3	2:A:381:LYS:HB3	1.95	0.48
2:C:194:LYS:NZ	2:C:241:THR:CG2	2.76	0.48
2:G:212:GLN:NE2	2:G:214:ARG:NH2	2.60	0.48
2:A:80:LEU:HA	2:A:83:MET:HE2	1.95	0.48
2:C:172:TYR:HD2	2:C:231:SER:HA	1.79	0.48
2:C:177:GLY:HA2	2:C:228:VAL:HG23	1.94	0.48
2:E:200:MET:HE2	2:E:240:ILE:CD1	2.44	0.48
2:G:200:MET:HE2	2:G:240:ILE:CD1	2.43	0.48
2:G:172:TYR:CE2	2:G:229:LEU:HD12	2.48	0.48
1:B:294:MET:CE	1:B:343:LYS:CD	2.92	0.48
2:C:39:VAL:HG21	2:C:157:GLY:HA2	1.96	0.48
1:H:333:ARG:O	1:H:334:GLU:HB3	2.14	0.48
2:G:227:ARG:HD3	2:G:229:LEU:CD2	2.44	0.48

Continued on next page...

Continued from previous page...

Atom-1	Atom-2	Interatomic distance (Å)	Clash overlap (Å)
2:A:135:GLY:HA2	2:A:156:THR:HG21	1.95	0.48
2:C:204:ALA:O	2:C:207:GLY:N	2.47	0.48
2:G:178:VAL:HG21	2:G:200:MET:CE	2.44	0.48
2:G:333:ARG:NH1	6:G:603:HOH:O	2.43	0.48
2:A:347:VAL:HG12	2:A:381:LYS:HG3	1.95	0.48
2:E:57:ILE:HD12	2:E:57:ILE:O	2.14	0.48
1:H:392:GLU:H	1:H:392:GLU:CD	2.12	0.47
2:G:96:THR:HG22	2:G:99:GLN:HG3	1.96	0.47
2:G:121:ILE:HG21	2:G:164:LEU:HD21	1.96	0.47
2:G:211:LEU:CD2	2:G:216:VAL:CG2	2.82	0.47
1:F:300:ALA:HB2	1:F:305:THR:OG1	2.14	0.47
2:C:377:THR:HG23	2:C:378:SER:N	2.28	0.47
2:E:229:LEU:HD21	2:E:236:PRO:O	2.13	0.47
2:C:378:SER:HB3	2:C:381:LYS:HB3	1.96	0.47
2:G:212:GLN:CG	2:G:214:ARG:NH2	2.77	0.47
2:A:253:ILE:HD12	2:A:253:ILE:HA	1.79	0.47
1:D:299:VAL:HG11	2:C:265:LYS:HE3	1.97	0.47
1:F:368:GLU:HB2	1:F:370:ILE:HG13	1.96	0.47
2:G:17:GLU:OE2	2:G:17:GLU:HA	2.14	0.47
2:G:68:VAL:HG22	2:E:79:ALA:HB2	1.96	0.47
2:A:173:THR:O	2:A:230:HIS:HA	2.13	0.47
2:A:192:LEU:HD13	2:A:195:ILE:CG2	2.44	0.47
2:G:173:THR:OG1	2:G:174:ASP:N	2.47	0.47
3:D:501:THR:N	2:C:371:ASN:OD1	2.47	0.47
2:C:313:ARG:HH12	2:C:388:GLU:CD	2.18	0.47
1:H:259:PHE:HA	1:H:343:LYS:O	2.15	0.47
2:G:41:SER:HA	2:G:74:GLU:CG	2.37	0.47
2:A:227:ARG:HG2	2:A:229:LEU:HD11	1.96	0.47
2:G:176:ASP:O	2:G:237:GLY:HA2	2.15	0.47
2:A:177:GLY:HA2	2:A:228:VAL:HG23	1.96	0.47
1:F:297:GLN:CG	1:F:305:THR:HG21	2.45	0.47
1:H:251:GLN:N	1:H:252:PRO:CD	2.78	0.47
2:E:16:VAL:O	2:E:20:GLU:HG3	2.15	0.47
1:F:254:ILE:HD12	1:F:254:ILE:C	2.35	0.47
2:C:57:ILE:HG22	2:C:58:MET:CG	2.45	0.47
1:B:294:MET:CE	1:B:343:LYS:HD3	2.46	0.46
1:H:347:VAL:HG23	1:H:381:LYS:HG2	1.97	0.46
2:E:107:ALA:HB1	2:E:110:LYS:HG3	1.97	0.46
1:B:261:ARG:H	1:F:261:ARG:HH21	1.51	0.46
2:A:178:VAL:HG23	2:A:206:LEU:HG	1.97	0.46
2:E:222:TYR:CD1	2:E:222:TYR:N	2.83	0.46

Continued on next page...

Continued from previous page...

Atom-1	Atom-2	Interatomic distance (Å)	Clash overlap (Å)
2:C:80:LEU:HA	2:C:83:MET:HE2	1.98	0.46
2:G:265:LYS:HB3	2:G:341:ILE:HD13	1.97	0.46
2:A:259:PHE:CD1	2:A:259:PHE:C	2.89	0.46
2:E:302:ASP:O	2:E:303:ASN:HB2	2.15	0.46
1:D:321:GLU:O	1:D:325:GLN:HG2	2.15	0.46
1:H:284:PRO:C	1:H:322:ILE:HD11	2.35	0.46
1:H:404:LEU:N	1:H:404:LEU:CD1	2.79	0.46
2:A:20:GLU:HB3	2:A:88:ARG:HH22	1.80	0.46
2:A:25:LYS:HZ3	2:A:233:GLN:HB2	1.79	0.46
2:A:353:SER:HB2	2:A:354:HIS:ND1	2.31	0.46
2:E:68:VAL:HG12	2:E:145:ILE:HB	1.98	0.46
2:E:107:ALA:O	2:E:111:ALA:N	2.48	0.46
2:E:351:MET:HE3	4:E:503:LYS:HE3	1.91	0.46
2:E:15:THR:HG23	2:E:18:ARG:N	2.11	0.46
2:E:46:GLU:O	2:E:50:LEU:HG	2.15	0.46
2:E:227:ARG:NH1	2:E:236:PRO:O	2.44	0.46
1:B:352:ARG:HG2	1:B:353:SER:OG	2.15	0.46
2:G:263:GLU:OE1	2:G:310:THR:HG21	2.16	0.46
2:C:79:ALA:HB3	2:A:69:MET:HG2	1.97	0.45
2:G:20:GLU:HB3	2:G:88:ARG:NH2	2.31	0.45
2:A:136:PHE:CE2	2:A:147:THR:OG1	2.64	0.45
2:E:195:ILE:O	2:E:240:ILE:HA	2.15	0.45
1:B:362:PHE:CZ	1:B:375:ILE:HD13	2.51	0.45
1:F:305:THR:HG23	1:F:306:ASP:N	2.32	0.45
2:G:212:GLN:HE21	2:G:212:GLN:CA	2.20	0.45
2:G:212:GLN:NE2	2:G:212:GLN:CA	2.73	0.45
1:F:373:GLN:HG3	1:F:385:VAL:HG12	1.98	0.45
2:G:190:ARG:NH2	2:G:404:LEU:HA	2.31	0.45
2:E:228:VAL:HG23	2:E:228:VAL:O	2.15	0.45
2:A:78:ILE:HD12	2:A:94:SER:HB2	1.97	0.45
2:A:196:THR:HA	2:A:241:THR:O	2.16	0.45
1:B:377:THR:CG2	2:A:294:MET:HA	2.36	0.45
2:C:122:ARG:HE	2:C:122:ARG:HB3	1.58	0.45
2:G:342:ALA:HB1	2:G:391:LEU:HD12	1.99	0.45
1:F:348:GLY:C	6:F:603:HOH:O	2.55	0.45
2:G:178:VAL:HG21	2:G:200:MET:HE2	1.99	0.45
2:G:210:VAL:HG13	2:G:211:LEU:N	2.32	0.45
2:G:253:ILE:HD12	2:G:253:ILE:HA	1.76	0.45
2:G:271:VAL:HG13	2:G:277:VAL:HG21	1.99	0.45
1:F:378:SER:HB3	1:F:381:LYS:HG3	1.97	0.45
2:C:377:THR:CG2	2:C:378:SER:N	2.79	0.45

Continued on next page...

Continued from previous page...

Atom-1	Atom-2	Interatomic distance (Å)	Clash overlap (Å)
2:G:67:ASP:O	2:G:71:SER:HB3	2.16	0.45
2:C:150:ARG:HD2	2:C:150:ARG:HA	1.70	0.45
2:G:188:GLN:CD	2:G:406:ALA:O	2.51	0.45
2:G:242:ILE:HG22	2:G:243:ASP:N	2.32	0.45
2:E:226:LEU:O	2:E:240:ILE:N	2.34	0.45
2:E:231:SER:O	2:E:232:PHE:CD2	2.70	0.45
2:G:290:VAL:HG13	2:G:315:ASP:HB3	1.99	0.45
2:E:288:ALA:HB3	2:E:290:VAL:HG23	1.99	0.45
1:F:261:ARG:H	1:F:261:ARG:HE	1.63	0.45
1:F:262:ASP:OD1	1:F:313:ARG:HB2	2.17	0.45
1:F:392:GLU:H	1:F:392:GLU:CD	2.19	0.45
2:G:351:MET:CE	4:G:502:LYS:HB2	2.42	0.45
2:E:265:LYS:HB3	2:E:341:ILE:HD13	1.99	0.45
2:E:280:LYS:O	2:E:284:PRO:HD2	2.17	0.45
1:B:294:MET:HE1	1:B:343:LYS:CD	2.47	0.44
1:F:257:ILE:HD11	1:F:398:LEU:HB3	1.99	0.44
2:C:359:SER:HB2	4:C:502:LYS:HE2	1.98	0.44
1:H:351:MET:HB3	1:H:351:MET:HE2	1.74	0.44
1:F:350:GLY:HA2	1:F:352:ARG:CZ	2.48	0.44
2:E:268:ILE:HG21	2:E:281:ILE:HD13	1.99	0.44
1:D:274:THR:O	3:D:501:THR:HA	2.18	0.44
1:D:377:THR:CG2	2:C:294:MET:HA	2.48	0.44
2:G:212:GLN:HB3	2:G:214:ARG:NH2	2.30	0.44
1:F:349:VAL:HG11	1:F:354:HIS:CD2	2.53	0.44
2:C:100:VAL:HG13	2:C:102:ILE:HG13	2.00	0.44
2:A:57:ILE:HG22	2:A:58:MET:CG	2.43	0.44
2:E:209:LYS:HA	2:E:212:GLN:OE1	2.17	0.44
2:E:229:LEU:HD21	2:E:236:PRO:C	2.38	0.44
1:D:251:GLN:H	1:D:252:PRO:HD3	1.83	0.44
2:A:271:VAL:O	2:A:304:THR:HA	2.18	0.44
2:G:15:THR:OG1	2:G:18:ARG:CG	2.66	0.44
1:F:297:GLN:HG3	1:F:305:THR:CG2	2.48	0.44
2:A:59:GLU:CD	2:A:59:GLU:N	2.71	0.44
1:D:354:HIS:HB2	2:C:292:VAL:O	2.17	0.44
1:B:282:LEU:HD12	1:B:282:LEU:HA	1.80	0.44
1:F:253:ILE:CD1	1:F:254:ILE:N	2.73	0.44
1:F:264:ALA:HB1	1:F:316:TYR:CD1	2.53	0.44
2:C:174:ASP:OD1	2:C:175:VAL:N	2.51	0.44
2:E:67:ASP:OD2	2:E:146:THR:HA	2.18	0.44
2:E:67:ASP:OD1	2:E:147:THR:OG1	2.23	0.44
1:B:392:GLU:CD	1:B:392:GLU:N	2.69	0.43

Continued on next page...

Continued from previous page...

Atom-1	Atom-2	Interatomic distance (Å)	Clash overlap (Å)
2:C:356:GLY:CA	4:C:502:LYS:HG2	2.44	0.43
2:E:342:ALA:CB	2:E:391:LEU:HD12	2.45	0.43
2:C:41:SER:HA	2:C:74:GLU:HG3	2.00	0.43
2:C:374:MET:HB2	2:C:385:VAL:HB	2.00	0.43
1:H:368:GLU:HG3	1:H:393:LEU:HD13	2.00	0.43
2:G:389:LYS:N	6:G:604:HOH:O	2.48	0.43
1:F:297:GLN:HG3	1:F:305:THR:HG21	2.01	0.43
2:C:85:LEU:HB3	2:C:90:VAL:HG13	2.00	0.43
1:H:389:LYS:CG	1:H:390:TYR:CD1	3.01	0.43
2:G:15:THR:OG1	2:G:18:ARG:HG2	2.18	0.43
2:A:136:PHE:CG	2:A:136:PHE:O	2.71	0.43
2:E:298:ASN:OD1	2:E:299:VAL:N	2.47	0.43
2:G:87:LYS:NZ	2:E:58:MET:CA	2.81	0.43
2:A:22:VAL:HG23	2:A:23:ALA:N	2.32	0.43
2:E:14:GLY:HA2	2:E:44:SER:H	1.84	0.43
1:H:367:LYS:C	1:H:368:GLU:O	2.53	0.43
2:G:211:LEU:C	2:G:211:LEU:CD2	2.85	0.43
2:A:59:GLU:CG	2:A:60:GLN:H	2.31	0.43
2:A:197:PHE:HD2	2:A:242:ILE:HG23	1.82	0.43
2:E:253:ILE:HD12	2:E:253:ILE:HA	1.80	0.43
2:C:12:SER:O	2:C:18:ARG:HB3	2.18	0.43
1:H:272:PRO:O	1:H:277:VAL:HG21	2.17	0.43
2:G:227:ARG:CD	2:G:229:LEU:CD2	2.86	0.43
2:G:253:ILE:HD13	2:G:354:HIS:ND1	2.33	0.43
2:A:100:VAL:O	2:A:117:ASP:HB2	2.19	0.43
1:D:262:ASP:O	1:D:263:GLU:HG2	2.18	0.43
1:H:255:SER:HB3	1:H:348:GLY:HA3	1.99	0.43
2:E:30:ARG:HD3	2:E:130:VAL:CG2	2.48	0.43
2:E:49:ARG:HG3	2:E:49:ARG:NH1	2.33	0.43
2:C:357:VAL:C	4:C:502:LYS:HG2	2.37	0.43
2:G:330:ILE:O	2:G:330:ILE:HG13	2.19	0.43
1:B:366:ALA:O	1:B:368:GLU:O	2.35	0.43
1:F:268:ILE:HG12	1:F:271:VAL:CG1	2.49	0.43
2:A:74:GLU:O	2:A:78:ILE:HG23	2.19	0.43
1:H:257:ILE:HD13	1:H:398:LEU:HB3	2.01	0.43
1:H:313:ARG:O	1:H:313:ARG:HD3	2.19	0.43
2:G:69:MET:HG3	2:E:79:ALA:CB	2.49	0.43
2:G:319:ALA:O	2:G:322:ILE:CG2	2.67	0.43
2:C:19:ILE:CA	2:C:22:VAL:CG2	2.92	0.42
2:C:213:ILE:O	2:C:217:GLU:HG3	2.19	0.42
1:H:346:ILE:HD13	1:H:346:ILE:HA	1.85	0.42

Continued on next page...

Continued from previous page...

Atom-1	Atom-2	Interatomic distance (Å)	Clash overlap (Å)
2:G:173:THR:OG1	2:G:210:VAL:HG23	2.14	0.42
1:F:341:ILE:HG22	1:F:373:GLN:HE22	1.84	0.42
1:F:368:GLU:HG3	1:F:397:ALA:HB2	2.01	0.42
2:A:28:LYS:O	2:A:31:GLU:HG2	2.20	0.42
2:C:28:LYS:HA	2:C:31:GLU:HG2	2.01	0.42
1:H:351:MET:HE2	1:H:379:GLU:HG3	2.02	0.42
2:G:257:ILE:HG12	2:G:346:ILE:HG22	2.01	0.42
2:G:319:ALA:HA	2:G:322:ILE:HG22	2.00	0.42
2:A:25:LYS:HE2	2:A:172:TYR:OH	2.20	0.42
1:B:365:LEU:HA	1:B:365:LEU:HD23	1.85	0.42
1:H:252:PRO:HB3	1:H:360:ARG:CZ	2.50	0.42
2:E:186:VAL:HG11	2:E:399:HIS:CG	2.54	0.42
1:F:371:ASN:OD1	3:F:501:THR:N	2.53	0.42
2:C:113:ILE:HD11	2:C:148:LEU:HD13	2.02	0.42
1:H:299:VAL:HG11	2:G:265:LYS:HE3	2.01	0.42
2:G:212:GLN:CD	2:G:214:ARG:NH2	2.72	0.42
2:G:229:LEU:HD23	2:G:237:GLY:HA3	2.01	0.42
2:A:39:VAL:HG11	2:A:160:LEU:HD12	2.01	0.42
1:H:368:GLU:HB2	1:H:370:ILE:HG13	2.01	0.42
2:G:269:ARG:HH11	2:G:269:ARG:HD2	1.71	0.42
2:G:318:ASN:O	2:G:322:ILE:HG22	2.20	0.42
2:C:173:THR:O	2:C:230:HIS:HA	2.20	0.42
2:C:232:PHE:CD1	2:C:232:PHE:N	2.83	0.42
2:G:87:LYS:NZ	2:E:58:MET:HG3	2.35	0.42
2:C:15:THR:OG1	2:C:18:ARG:HG2	2.20	0.42
2:C:194:LYS:HZ3	2:C:241:THR:CG2	2.32	0.42
1:H:363:GLU:HB2	2:G:279:PHE:CD1	2.55	0.42
2:G:69:MET:CG	2:E:79:ALA:HB3	2.50	0.42
1:D:282:LEU:HD12	1:D:282:LEU:HA	1.87	0.41
2:A:22:VAL:O	2:A:26:VAL:HG23	2.19	0.41
1:D:282:LEU:HG	4:C:502:LYS:NZ	2.35	0.41
1:B:261:ARG:NH2	1:B:392:GLU:OE2	2.48	0.41
1:B:294:MET:HE2	1:B:343:LYS:HD3	2.01	0.41
1:H:250:GLU:C	1:H:252:PRO:HD2	2.40	0.41
1:H:377:THR:CG2	2:G:294:MET:HA	2.33	0.41
2:A:136:PHE:O	2:A:136:PHE:CD1	2.72	0.41
2:E:19:ILE:O	2:E:22:VAL:HG22	2.20	0.41
2:C:317:LEU:HD23	2:C:317:LEU:O	2.20	0.41
2:A:31:GLU:HG2	2:A:32:ALA:N	2.34	0.41
2:E:25:LYS:CE	2:E:233:GLN:HB3	2.50	0.41
2:C:87:LYS:CE	2:A:57:ILE:O	2.57	0.41

Continued on next page...

Continued from previous page...

Atom-1	Atom-2	Interatomic distance (Å)	Clash overlap (Å)
2:G:188:GLN:CG	2:G:406:ALA:H	2.33	0.41
2:C:101:ARG:HD3	2:C:101:ARG:HA	1.89	0.41
1:H:324:LYS:HD3	6:H:603:HOH:O	2.21	0.41
1:H:370:ILE:HD11	1:H:393:LEU:CD1	2.50	0.41
2:G:14:GLY:HA2	2:G:44:SER:H	1.86	0.41
2:G:20:GLU:HB3	2:G:88:ARG:HH22	1.86	0.41
2:A:178:VAL:HG12	2:A:238:THR:CB	2.50	0.41
2:A:399:HIS:ND1	2:A:405:ASP:OD1	2.46	0.41
2:E:178:VAL:CG1	2:E:206:LEU:CD1	2.79	0.41
2:A:124:ASP:OD1	2:A:129:ARG:NH2	2.43	0.41
1:B:294:MET:HE2	1:B:343:LYS:CD	2.51	0.41
2:C:79:ALA:HB2	2:A:68:VAL:HG12	2.02	0.41
4:C:502:LYS:HD3	6:C:601:HOH:O	2.21	0.41
2:A:226:LEU:HD23	2:A:226:LEU:HA	1.84	0.41
1:B:259:PHE:N	1:B:259:PHE:CD1	2.89	0.41
2:A:389:LYS:HB3	6:A:606:HOH:O	2.20	0.41
2:E:384:VAL:HG13	2:E:386:ILE:HG23	2.02	0.41
1:D:318:ASN:HB2	6:D:607:HOH:O	2.20	0.41
1:B:389:LYS:HE3	1:B:390:TYR:OH	2.21	0.41
1:F:262:ASP:C	1:F:263:GLU:HG2	2.41	0.41
1:F:387:GLU:HB2	1:F:390:TYR:CD2	2.55	0.41
2:C:8:PHE:CE1	2:C:22:VAL:HG12	2.56	0.41
2:G:10:GLY:N	5:G:501:GOL:O2	2.52	0.41
2:G:190:ARG:HG2	2:G:404:LEU:O	2.21	0.41
2:E:67:ASP:O	2:E:71:SER:HB3	2.20	0.41
2:E:242:ILE:HG22	2:E:243:ASP:H	1.86	0.41
1:B:295:ILE:N	2:A:377:THR:HG21	2.34	0.41
1:F:295:ILE:N	2:E:377:THR:HG21	2.29	0.41
2:C:28:LYS:HA	2:C:31:GLU:CD	2.42	0.41
2:C:210:VAL:HG13	2:C:211:LEU:N	2.35	0.41
2:G:5:VAL:HG22	2:G:37:VAL:HB	2.02	0.41
2:G:107:ALA:O	2:G:111:ALA:N	2.53	0.41
2:A:39:VAL:CG1	2:A:160:LEU:HD12	2.51	0.41
2:A:116:ILE:HD13	2:A:160:LEU:HD23	2.03	0.41
2:A:214:ARG:HG3	2:A:214:ARG:NH1	2.36	0.41
1:D:266:LEU:HB3	1:D:323:LEU:HD22	2.03	0.40
1:D:282:LEU:HG	4:C:502:LYS:HZ2	1.85	0.40
2:C:233:GLN:O	2:C:233:GLN:CG	2.69	0.40
2:E:229:LEU:CD2	2:E:237:GLY:N	2.84	0.40
1:B:368:GLU:HB3	1:B:393:LEU:HD21	2.01	0.40
2:C:357:VAL:CA	4:C:502:LYS:HB3	2.51	0.40

Continued on next page...

Continued from previous page...

Atom-1	Atom-2	Interatomic distance (Å)	Clash overlap (Å)
1:H:264:ALA:HB1	1:H:316:TYR:CD1	2.56	0.40
1:H:354:HIS:HB2	2:G:292:VAL:O	2.21	0.40
2:E:97:GLY:H	2:E:137:GLN:NE2	2.19	0.40
1:H:351:MET:HE1	1:H:379:GLU:HG2	2.03	0.40
2:G:384:VAL:HG12	2:G:386:ILE:HG23	2.03	0.40
2:A:396:ARG:O	2:A:400:THR:HG23	2.21	0.40
2:E:20:GLU:OE1	2:E:88:ARG:NH1	2.36	0.40
2:E:176:ASP:O	2:E:237:GLY:HA2	2.21	0.40
2:G:67:ASP:OD2	2:G:146:THR:HA	2.21	0.40
2:C:271:VAL:CG1	2:C:277:VAL:HG11	2.51	0.40
1:H:259:PHE:CD1	1:H:259:PHE:N	2.89	0.40
2:G:25:LYS:HE2	2:G:233:GLN:HB2	2.04	0.40
2:G:57:ILE:HG22	2:G:58:MET:HG3	2.03	0.40
2:G:391:LEU:O	2:G:395:VAL:HG23	2.22	0.40
2:G:404:LEU:HA	2:G:404:LEU:HD23	1.86	0.40
2:A:85:LEU:HB3	2:A:90:VAL:HG13	2.04	0.40

There are no symmetry-related clashes.

5.3 Torsion angles [i](#)

5.3.1 Protein backbone [i](#)

In the following table, the Percentiles column shows the percent Ramachandran outliers of the chain as a percentile score with respect to all X-ray entries followed by that with respect to entries of similar resolution.

The Analysed column shows the number of residues for which the backbone conformation was analysed, and the total number of residues.

Mol	Chain	Analysed	Favoured	Allowed	Outliers	Percentiles	
1	B	154/164 (94%)	152 (99%)	2 (1%)	0	100	100
1	D	154/164 (94%)	150 (97%)	3 (2%)	1 (1%)	25	31
1	F	149/164 (91%)	147 (99%)	2 (1%)	0	100	100
1	H	154/164 (94%)	151 (98%)	3 (2%)	0	100	100
2	A	393/412 (95%)	388 (99%)	4 (1%)	1 (0%)	41	50
2	C	393/412 (95%)	387 (98%)	4 (1%)	2 (0%)	29	35
2	E	393/412 (95%)	384 (98%)	8 (2%)	1 (0%)	41	50

Continued on next page...

Continued from previous page...

Mol	Chain	Analysed	Favoured	Allowed	Outliers	Percentiles	
2	G	393/412 (95%)	385 (98%)	7 (2%)	1 (0%)	41	50
All	All	2183/2304 (95%)	2144 (98%)	33 (2%)	6 (0%)	41	50

All (6) Ramachandran outliers are listed below:

Mol	Chain	Res	Type
2	C	101	ARG
2	G	101	ARG
2	E	101	ARG
2	A	101	ARG
1	D	251	GLN
2	C	105	ASP

5.3.2 Protein sidechains [i](#)

In the following table, the Percentiles column shows the percent sidechain outliers of the chain as a percentile score with respect to all X-ray entries followed by that with respect to entries of similar resolution.

The Analysed column shows the number of residues for which the sidechain conformation was analysed, and the total number of residues.

Mol	Chain	Analysed	Rotameric	Outliers	Percentiles	
1	B	126/133 (95%)	118 (94%)	8 (6%)	18	24
1	D	126/133 (95%)	117 (93%)	9 (7%)	14	19
1	F	123/133 (92%)	112 (91%)	11 (9%)	9	11
1	H	126/133 (95%)	116 (92%)	10 (8%)	12	15
2	A	323/336 (96%)	306 (95%)	17 (5%)	22	31
2	C	323/336 (96%)	314 (97%)	9 (3%)	43	60
2	E	323/336 (96%)	303 (94%)	20 (6%)	18	25
2	G	323/336 (96%)	305 (94%)	18 (6%)	21	29
All	All	1793/1876 (96%)	1691 (94%)	102 (6%)	20	28

All (102) residues with a non-rotameric sidechain are listed below:

Mol	Chain	Res	Type
1	D	313	ARG
1	D	333	ARG

Continued on next page...

Continued from previous page...

Mol	Chain	Res	Type
1	D	339	THR
1	D	344	VAL
1	D	352	ARG
1	D	373	GLN
1	D	377	THR
1	D	403	GLU
1	D	405	ASP
1	B	271	VAL
1	B	313	ARG
1	B	339	THR
1	B	344	VAL
1	B	352	ARG
1	B	353	SER
1	B	377	THR
1	B	399	HIS
1	F	253	ILE
1	F	261	ARG
1	F	313	ARG
1	F	321	GLU
1	F	333	ARG
1	F	352	ARG
1	F	353	SER
1	F	369	SER
1	F	377	THR
1	F	396	ARG
1	F	403	GLU
2	C	21	GLN
2	C	22	VAL
2	C	110	LYS
2	C	136	PHE
2	C	150	ARG
2	C	310	THR
2	C	352	ARG
2	C	377	THR
2	C	378	SER
1	H	261	ARG
1	H	313	ARG
1	H	330	ILE
1	H	344	VAL
1	H	347	VAL
1	H	351	MET
1	H	369	SER

Continued on next page...

Continued from previous page...

Mol	Chain	Res	Type
1	H	377	THR
1	H	389	LYS
1	H	393	LEU
2	G	18	ARG
2	G	21	GLN
2	G	100	VAL
2	G	112	ARG
2	G	136	PHE
2	G	174	ASP
2	G	184	ARG
2	G	188	GLN
2	G	190	ARG
2	G	205	SER
2	G	209	LYS
2	G	214	ARG
2	G	229	LEU
2	G	243	ASP
2	G	310	THR
2	G	352	ARG
2	G	360	ARG
2	G	378	SER
2	A	11	THR
2	A	87	LYS
2	A	100	VAL
2	A	109	THR
2	A	110	LYS
2	A	137	GLN
2	A	205	SER
2	A	206	LEU
2	A	229	LEU
2	A	233	GLN
2	A	243	ASP
2	A	310	THR
2	A	317	LEU
2	A	351	MET
2	A	353	SER
2	A	378	SER
2	A	403	GLU
2	E	18	ARG
2	E	46	GLU
2	E	49	ARG
2	E	100	VAL

Continued on next page...

Continued from previous page...

Mol	Chain	Res	Type
2	E	137	GLN
2	E	188	GLN
2	E	190	ARG
2	E	206	LEU
2	E	209	LYS
2	E	211	LEU
2	E	212	GLN
2	E	232	PHE
2	E	233	GLN
2	E	242	ILE
2	E	261	ARG
2	E	310	THR
2	E	321	GLU
2	E	352	ARG
2	E	353	SER
2	E	384	VAL

Sometimes sidechains can be flipped to improve hydrogen bonding and reduce clashes. All (13) such sidechains are listed below:

Mol	Chain	Res	Type
1	B	340	ASN
1	B	373	GLN
2	C	21	GLN
2	C	318	ASN
2	C	399	HIS
1	H	301	HIS
1	H	399	HIS
2	G	188	GLN
2	G	212	GLN
2	A	99	GLN
2	A	233	GLN
2	E	137	GLN
2	E	325	GLN

5.3.3 RNA [i](#)

There are no RNA molecules in this entry.

5.4 Non-standard residues in protein, DNA, RNA chains [i](#)

There are no non-standard protein/DNA/RNA residues in this entry.

5.5 Carbohydrates [i](#)

There are no monosaccharides in this entry.

5.6 Ligand geometry [i](#)

15 ligands are modelled in this entry.

In the following table, the Counts columns list the number of bonds (or angles) for which Mogul statistics could be retrieved, the number of bonds (or angles) that are observed in the model and the number of bonds (or angles) that are defined in the Chemical Component Dictionary. The Link column lists molecule types, if any, to which the group is linked. The Z score for a bond length (or angle) is the number of standard deviations the observed value is removed from the expected value. A bond length (or angle) with $|Z| > 2$ is considered an outlier worth inspection. RMSZ is the root-mean-square of all Z scores of the bond lengths (or angles).

Mol	Type	Chain	Res	Link	Bond lengths			Bond angles		
					Counts	RMSZ	# Z > 2	Counts	RMSZ	# Z > 2
5	GOL	G	501	-	5,5,5	0.28	0	5,5,5	0.89	0
3	THR	B	501	-	6,7,7	1.72	2 (33%)	7,9,9	0.83	0
3	THR	H	501	-	6,7,7	2.21	2 (33%)	7,9,9	1.31	1 (14%)
4	LYS	E	503	-	8,9,9	1.00	0	9,10,10	0.87	0
3	THR	D	501	-	6,7,7	2.15	1 (16%)	7,9,9	1.20	0
4	LYS	G	502	-	8,9,9	0.83	0	9,10,10	1.15	1 (11%)
3	THR	F	501	-	6,7,7	1.23	0	7,9,9	0.81	0
4	LYS	C	502	-	8,9,9	0.98	0	9,10,10	1.29	1 (11%)
3	THR	G	503	-	6,7,7	1.34	1 (16%)	7,9,9	0.89	0
5	GOL	E	502	-	5,5,5	0.20	0	5,5,5	0.40	0
5	GOL	E	501	-	5,5,5	0.20	0	5,5,5	0.45	0
3	THR	F	502	-	6,7,7	1.75	1 (16%)	7,9,9	0.70	0
3	THR	A	502	-	6,7,7	1.45	1 (16%)	7,9,9	0.52	0
4	LYS	A	501	-	8,9,9	1.03	0	9,10,10	0.77	0
3	THR	C	501	-	6,7,7	1.38	2 (33%)	7,9,9	1.04	0

In the following table, the Chirals column lists the number of chiral outliers, the number of chiral centers analysed, the number of these observed in the model and the number defined in the Chemical Component Dictionary. Similar counts are reported in the Torsion and Rings columns. '-' means no outliers of that kind were identified.

Mol	Type	Chain	Res	Link	Chirals	Torsions	Rings
5	GOL	G	501	-	-	2/4/4/4	-
3	THR	B	501	-	-	2/8/8/8	-
3	THR	H	501	-	-	0/8/8/8	-
4	LYS	E	503	-	-	1/9/9/9	-
3	THR	D	501	-	-	0/8/8/8	-
4	LYS	G	502	-	-	3/9/9/9	-
3	THR	F	501	-	-	0/8/8/8	-
4	LYS	C	502	-	-	4/9/9/9	-
3	THR	G	503	-	-	2/8/8/8	-
5	GOL	E	502	-	-	0/4/4/4	-
5	GOL	E	501	-	-	2/4/4/4	-
3	THR	F	502	-	-	1/8/8/8	-
3	THR	A	502	-	-	0/8/8/8	-
4	LYS	A	501	-	-	1/9/9/9	-
3	THR	C	501	-	-	2/8/8/8	-

All (10) bond length outliers are listed below:

Mol	Chain	Res	Type	Atoms	Z	Observed(Å)	Ideal(Å)
3	H	501	THR	CG2-CB	-4.34	1.39	1.51
3	D	501	THR	CG2-CB	-4.17	1.39	1.51
3	F	502	THR	CG2-CB	-3.02	1.42	1.51
3	B	501	THR	CG2-CB	-2.62	1.44	1.51
3	H	501	THR	OXT-C	-2.35	1.22	1.30
3	B	501	THR	CA-N	-2.16	1.41	1.47
3	C	501	THR	CA-N	-2.11	1.41	1.47
3	C	501	THR	CG2-CB	-2.09	1.45	1.51
3	A	502	THR	OXT-C	-2.08	1.23	1.30
3	G	503	THR	CG2-CB	-2.08	1.45	1.51

All (3) bond angle outliers are listed below:

Mol	Chain	Res	Type	Atoms	Z	Observed(°)	Ideal(°)
4	G	502	LYS	CB-CA-C	2.55	116.37	110.30
4	C	502	LYS	O-C-CA	-2.55	113.15	122.14
3	H	501	THR	OXT-C-O	2.27	129.24	124.09

There are no chirality outliers.

All (20) torsion outliers are listed below:

Mol	Chain	Res	Type	Atoms
4	C	502	LYS	C-CA-CB-CG
4	G	502	LYS	N-CA-CB-CG
4	G	502	LYS	C-CA-CB-CG
5	G	501	GOL	C1-C2-C3-O3
5	E	501	GOL	O1-C1-C2-C3
5	E	501	GOL	O1-C1-C2-O2
4	C	502	LYS	CA-CB-CG-CD
5	G	501	GOL	O2-C2-C3-O3
4	C	502	LYS	CE-CD-CG-CB
3	B	501	THR	O-C-CA-CB
3	C	501	THR	O-C-CA-CB
3	G	503	THR	O-C-CA-CB
3	G	503	THR	OXT-C-CA-CB
4	G	502	LYS	CG-CD-CE-NZ
4	C	502	LYS	N-CA-CB-CG
4	A	501	LYS	CG-CD-CE-NZ
4	E	503	LYS	CG-CD-CE-NZ
3	B	501	THR	OXT-C-CA-CB
3	C	501	THR	OXT-C-CA-CB
3	F	502	THR	OXT-C-CA-N

There are no ring outliers.

11 monomers are involved in 76 short contacts:

Mol	Chain	Res	Type	Clashes	Symm-Clashes
5	G	501	GOL	1	0
3	H	501	THR	2	0
4	E	503	LYS	4	0
3	D	501	THR	3	0
4	G	502	LYS	7	0
3	F	501	THR	4	0
4	C	502	LYS	38	0
3	G	503	THR	11	0
3	A	502	THR	1	0
4	A	501	LYS	4	0
3	C	501	THR	1	0

5.7 Other polymers [i](#)

There are no such residues in this entry.

5.8 Polymer linkage issues

There are no chain breaks in this entry.

6 Fit of model and data

6.1 Protein, DNA and RNA chains

In the following table, the column labelled ‘#RSRZ > 2’ contains the number (and percentage) of RSRZ outliers, followed by percent RSRZ outliers for the chain as percentile scores relative to all X-ray entries and entries of similar resolution. The OWAB column contains the minimum, median, 95th percentile and maximum values of the occupancy-weighted average B-factor per residue. The column labelled ‘Q < 0.9’ lists the number of (and percentage) of residues with an average occupancy less than 0.9.

Mol	Chain	Analysed	<RSRZ>	#RSRZ>2	OWAB(Å ²)	Q<0.9
1	B	156/164 (95%)	0.13	1 (0%) 89 92	25, 40, 73, 104	0
1	D	156/164 (95%)	0.20	2 (1%) 77 81	23, 41, 91, 141	0
1	F	151/164 (92%)	0.22	5 (3%) 46 53	30, 52, 86, 122	0
1	H	156/164 (95%)	0.24	6 (3%) 40 47	27, 53, 112, 195	0
2	A	397/412 (96%)	0.19	10 (2%) 57 64	22, 46, 79, 167	0
2	C	397/412 (96%)	0.21	9 (2%) 60 67	23, 46, 81, 136	0
2	E	397/412 (96%)	0.30	15 (3%) 40 47	28, 52, 94, 153	0
2	G	397/412 (96%)	0.31	18 (4%) 33 40	27, 49, 93, 154	0
All	All	2207/2304 (95%)	0.24	66 (2%) 50 57	22, 48, 89, 195	0

All (66) RSRZ outliers are listed below:

Mol	Chain	Res	Type	RSRZ
2	G	210	VAL	15.0
2	E	210	VAL	10.1
2	A	210	VAL	9.7
2	G	206	LEU	9.6
2	E	207	GLY	9.6
2	E	206	LEU	8.6
2	G	207	GLY	7.3
1	H	404	LEU	7.0
2	C	232	PHE	6.7
2	A	206	LEU	6.3
2	G	209	LYS	6.2
2	A	209	LYS	5.4
1	H	405	ASP	5.1
2	E	209	LYS	5.0
2	C	210	VAL	4.9
2	A	406	ALA	4.6

Continued on next page...

Continued from previous page...

Mol	Chain	Res	Type	RSRZ
2	C	231	SER	4.1
2	E	213	ILE	3.9
2	E	150	ARG	3.8
2	C	209	LYS	3.8
1	F	403	GLU	3.7
2	C	150	ARG	3.6
2	G	205	SER	3.5
1	H	250	GLU	3.4
1	F	351	MET	3.4
2	E	234	GLU	3.4
2	C	206	LEU	3.4
2	C	211	LEU	3.4
2	G	232	PHE	3.3
2	A	150	ARG	3.2
2	G	221	LYS	3.2
2	G	281	ILE	3.2
2	E	232	PHE	3.1
1	F	390	TYR	3.1
2	E	208	SER	3.1
1	D	351	MET	3.1
2	G	211	LEU	3.0
1	H	351	MET	2.9
2	E	217	GLU	2.8
2	C	57	ILE	2.8
2	G	323	LEU	2.7
2	E	233	GLN	2.7
2	G	282	LEU	2.6
2	E	201	LEU	2.5
1	F	349	VAL	2.5
1	H	251	GLN	2.4
2	A	208	SER	2.4
2	G	332	ALA	2.4
2	G	213	ILE	2.3
2	G	212	GLN	2.3
2	G	231	SER	2.3
2	E	320	LEU	2.3
2	E	218	PHE	2.3
2	A	232	PHE	2.2
1	H	360	ARG	2.2
2	C	218	PHE	2.2
1	D	405	ASP	2.2
1	B	351	MET	2.2

Continued on next page...

Continued from previous page...

Mol	Chain	Res	Type	RSRZ
2	E	205	SER	2.2
1	F	387	GLU	2.1
2	G	218	PHE	2.1
2	A	332	ALA	2.1
2	G	243	ASP	2.1
2	A	110	LYS	2.1
2	A	59	GLU	2.0
2	G	330	ILE	2.0

6.2 Non-standard residues in protein, DNA, RNA chains [i](#)

There are no non-standard protein/DNA/RNA residues in this entry.

6.3 Carbohydrates [i](#)

There are no monosaccharides in this entry.

6.4 Ligands [i](#)

In the following table, the Atoms column lists the number of modelled atoms in the group and the number defined in the chemical component dictionary. The B-factors column lists the minimum, median, 95th percentile and maximum values of B factors of atoms in the group. The column labelled 'Q<0.9' lists the number of atoms with occupancy less than 0.9.

Mol	Type	Chain	Res	Atoms	RSCC	RSR	B-factors(Å ²)	Q<0.9
5	GOL	E	501	6/6	0.79	0.17	60,63,66,67	0
5	GOL	G	501	6/6	0.81	0.14	62,63,64,65	0
5	GOL	E	502	6/6	0.87	0.12	60,63,64,66	0
4	LYS	C	502	10/10	0.90	0.17	35,48,51,51	0
3	THR	F	501	8/8	0.91	0.18	51,58,62,63	0
3	THR	G	503	8/8	0.93	0.17	49,60,66,73	0
3	THR	C	501	8/8	0.94	0.16	43,48,51,59	0
3	THR	B	501	8/8	0.95	0.14	38,43,49,53	0
3	THR	H	501	8/8	0.96	0.13	34,36,42,43	0
4	LYS	E	503	10/10	0.97	0.15	33,41,46,49	0
3	THR	A	502	8/8	0.97	0.12	30,47,48,49	0
3	THR	F	502	8/8	0.97	0.11	33,38,40,43	0
4	LYS	G	502	10/10	0.97	0.12	32,39,43,44	0
3	THR	D	501	8/8	0.98	0.11	31,33,36,41	0
4	LYS	A	501	10/10	0.98	0.11	24,28,36,39	0

6.5 Other polymers [i](#)

There are no such residues in this entry.