



Full wwPDB EM Validation Report ⓘ

Nov 8, 2022 – 09:15 AM JST

PDB ID : 5ZAM
EMDB ID : EMD-6906
Title : Cryo-EM structure of human Dicer and its complexes with a pre-miRNA substrate
Authors : Liu, Z.; Wang, J.; Cheng, H.; Ke, X.; Sun, L.; Zhang, Q.C.; Wang, H.-W.
Deposited on : 2018-02-07
Resolution : 5.70 Å(reported)

This is a Full wwPDB EM Validation Report for a publicly released PDB entry.

We welcome your comments at validation@mail.wwpdb.org

A user guide is available at

<https://www.wwpdb.org/validation/2017/EMValidationReportHelp>

with specific help available everywhere you see the ⓘ symbol.

The types of validation reports are described at

<http://www.wwpdb.org/validation/2017/FAQs#types>.

The following versions of software and data (see [references ⓘ](#)) were used in the production of this report:

EMDB validation analysis : 0.0.1.dev43
MolProbity : 4.02b-467
Percentile statistics : 20191225.v01 (using entries in the PDB archive December 25th 2019)
MapQ : 1.9.9
Ideal geometry (proteins) : Engh & Huber (2001)
Ideal geometry (DNA, RNA) : Parkinson et al. (1996)
Validation Pipeline (wwPDB-VP) : 2.31.2

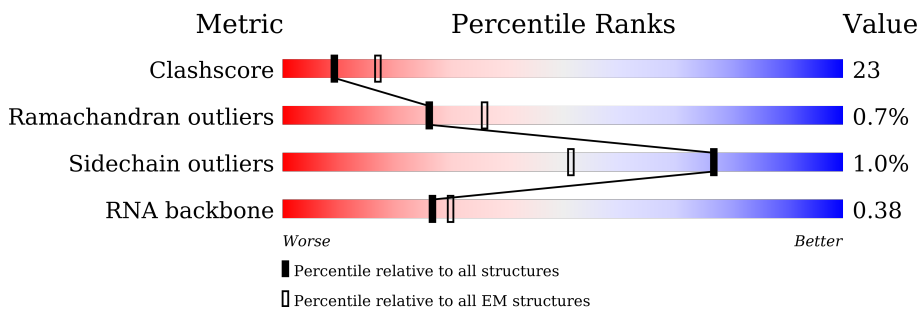
1 Overall quality at a glance

The following experimental techniques were used to determine the structure:

ELECTRON MICROSCOPY

The reported resolution of this entry is 5.70 Å.

Percentile scores (ranging between 0-100) for global validation metrics of the entry are shown in the following graphic. The table shows the number of entries on which the scores are based.



Metric	Whole archive (#Entries)	EM structures (#Entries)
Clashscore	158937	4297
Ramachandran outliers	154571	4023
Sidechain outliers	154315	3826
RNA backbone	4643	859

The table below summarises the geometric issues observed across the polymeric chains and their fit to the map. The red, orange, yellow and green segments of the bar indicate the fraction of residues that contain outliers for ≥ 3 , 2, 1 and 0 types of geometric quality criteria respectively. A grey segment represents the fraction of residues that are not modelled. The numeric value for each fraction is indicated below the corresponding segment, with a dot representing fractions $\leq 5\%$. The upper red bar (where present) indicates the fraction of residues that have poor fit to the EM map (all-atom inclusion $< 40\%$). The numeric value is given above the bar.

Mol	Chain	Length	Quality of chain
1	A	1922	
2	B	366	
3	C	73	

2 Entry composition

There are 3 unique types of molecules in this entry. The entry contains 12045 atoms, of which 0 are hydrogens and 0 are deuteriums.

In the tables below, the AltConf column contains the number of residues with at least one atom in alternate conformation and the Trace column contains the number of residues modelled with at most 2 atoms.

- Molecule 1 is a protein called Endoribonuclease Dicer.

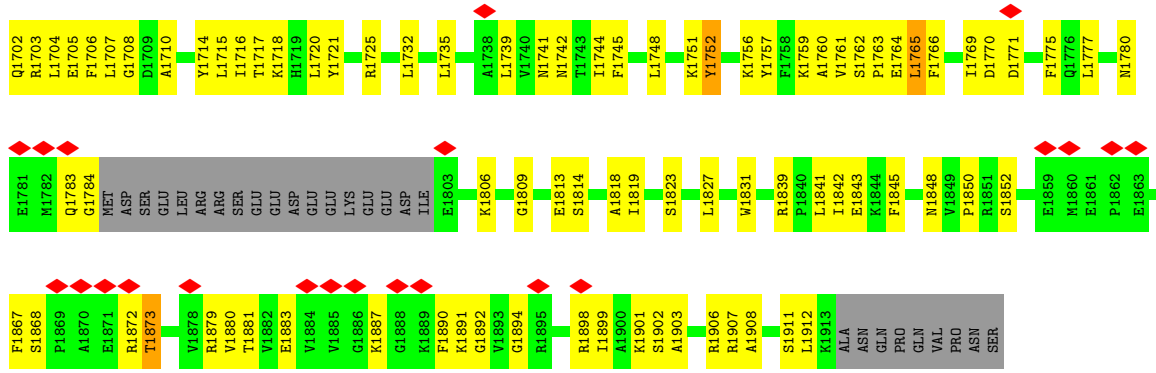
Mol	Chain	Residues	Atoms					AltConf	Trace
			Total	C	N	O	S		
1	A	1314	10552	6742	1807	1943	60	0	0

- Molecule 2 is a protein called RISC-loading complex subunit TARBP2.

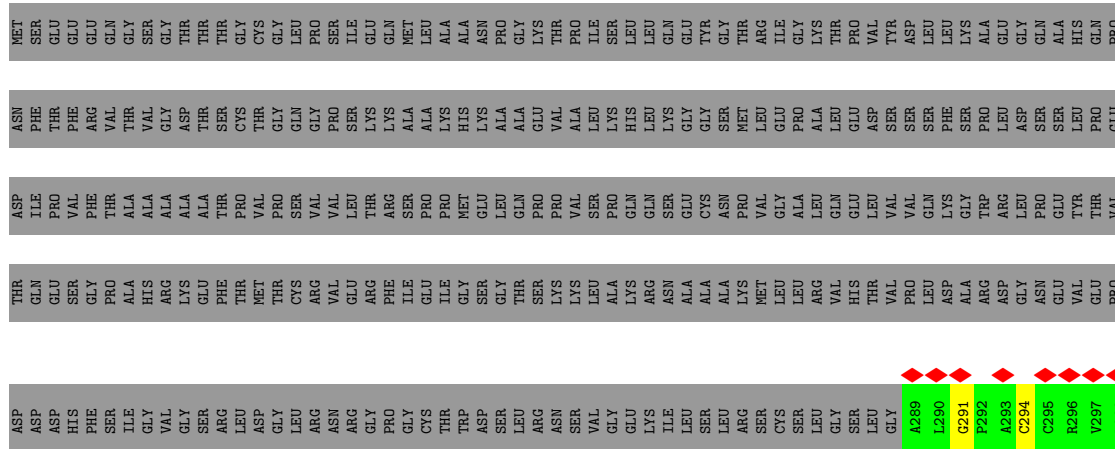
Mol	Chain	Residues	Atoms					AltConf	Trace
			Total	C	N	O	S		
2	B	75	560	345	99	110	6	0	0

- Molecule 3 is a RNA chain called RNA (73-mer).

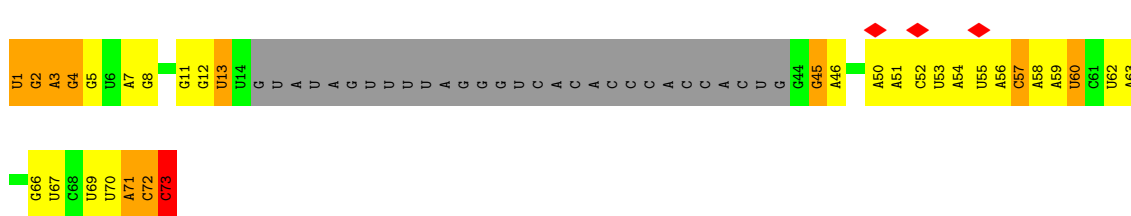
Mol	Chain	Residues	Atoms					AltConf	Trace
			Total	C	N	O	P		
3	C	44	933	419	164	307	43	0	0



• Molecule 2: RISC-loading complex subunit TARBP2



• Molecule 3: RNA (73-mer)



4 Experimental information

Property	Value	Source
EM reconstruction method	SINGLE PARTICLE	Depositor
Imposed symmetry	POINT, C1	Depositor
Number of particles used	60000	Depositor
Resolution determination method	FSC 0.143 CUT-OFF	Depositor
CTF correction method	PHASE FLIPPING AND AMPLITUDE CORRECTION	Depositor
Microscope	FEI TITAN KRIOS	Depositor
Voltage (kV)	300	Depositor
Electron dose ($e^-/\text{\AA}^2$)	50	Depositor
Minimum defocus (nm)	2500	Depositor
Maximum defocus (nm)	3500	Depositor
Magnification	36496	Depositor
Image detector	GATAN K2 SUMMIT (4k x 4k)	Depositor
Maximum map value	0.162	Depositor
Minimum map value	-0.062	Depositor
Average map value	0.001	Depositor
Map value standard deviation	0.007	Depositor
Recommended contour level	0.04	Depositor
Map size (Å)	246.6, 246.6, 246.6	wwPDB
Map dimensions	180, 180, 180	wwPDB
Map angles (°)	90.0, 90.0, 90.0	wwPDB
Pixel spacing (Å)	1.37, 1.37, 1.37	Depositor

5 Model quality [i](#)

5.1 Standard geometry [i](#)

The Z score for a bond length (or angle) is the number of standard deviations the observed value is removed from the expected value. A bond length (or angle) with $|Z| > 5$ is considered an outlier worth inspection. RMSZ is the root-mean-square of all Z scores of the bond lengths (or angles).

Mol	Chain	Bond lengths		Bond angles	
		RMSZ	# $ Z > 5$	RMSZ	# $ Z > 5$
1	A	0.51	1/10766 (0.0%)	0.83	23/14558 (0.2%)
2	B	0.44	0/566	0.65	0/765
3	C	0.70	0/1042	1.56	19/1619 (1.2%)
All	All	0.52	1/12374 (0.0%)	0.92	42/16942 (0.2%)

Chiral center outliers are detected by calculating the chiral volume of a chiral center and verifying if the center is modelled as a planar moiety or with the opposite hand. A planarity outlier is detected by checking planarity of atoms in a peptide group, atoms in a mainchain group or atoms of a sidechain that are expected to be planar.

Mol	Chain	#Chirality outliers	#Planarity outliers
1	A	0	39
2	B	0	1
All	All	0	40

All (1) bond length outliers are listed below:

Mol	Chain	Res	Type	Atoms	Z	Observed(Å)	Ideal(Å)
1	A	1048	TRP	CB-CG	-5.26	1.40	1.50

All (42) bond angle outliers are listed below:

Mol	Chain	Res	Type	Atoms	Z	Observed(°)	Ideal(°)
3	C	72	C	C2-N1-C1'	13.47	133.62	118.80
3	C	72	C	N1-C2-O2	12.00	126.10	118.90
3	C	4	G	N7-C8-N9	11.57	118.89	113.10
3	C	72	C	N3-C2-O2	-9.79	115.05	121.90
3	C	72	C	C6-N1-C1'	-9.50	109.40	120.80
3	C	4	G	C5-N7-C8	-8.90	99.85	104.30
3	C	72	C	C6-N1-C2	-8.45	116.92	120.30
3	C	1	U	N3-C2-O2	-7.93	116.65	122.20
3	C	4	G	C8-N9-C4	-7.65	103.34	106.40
3	C	73	C	N1-C2-O2	7.20	123.22	118.90

Continued on next page...

Continued from previous page...

Mol	Chain	Res	Type	Atoms	Z	Observed(°)	Ideal(°)
1	A	243	LEU	CA-CB-CG	7.05	131.52	115.30
3	C	72	C	C5-C6-N1	6.72	124.36	121.00
1	A	1591	LEU	CA-CB-CG	6.63	130.54	115.30
1	A	460	LEU	CA-CB-CG	6.51	130.27	115.30
1	A	649	LEU	CA-CB-CG	6.50	130.25	115.30
1	A	1064	LEU	CA-CB-CG	6.46	130.15	115.30
1	A	99	LEU	CA-CB-CG	6.28	129.74	115.30
3	C	73	C	N3-C2-O2	-6.19	117.56	121.90
1	A	649	LEU	C-N-CA	6.19	137.17	121.70
3	C	3	A	N1-C6-N6	6.11	122.27	118.60
3	C	57	C	N1-C2-O2	6.11	122.56	118.90
3	C	60	U	C5-C6-N1	5.98	125.69	122.70
1	A	849	LEU	CA-CB-CG	-5.92	101.70	115.30
1	A	166	LEU	CA-CB-CG	5.90	128.87	115.30
1	A	368	LEU	CA-CB-CG	5.87	128.81	115.30
1	A	190	MET	CB-CG-SD	-5.80	94.99	112.40
1	A	134	THR	C-N-CA	5.61	135.71	121.70
3	C	4	G	C4-C5-N7	5.56	113.02	110.80
1	A	471	LEU	CA-CB-CG	5.53	128.03	115.30
3	C	4	G	C6-C5-N7	-5.47	127.11	130.40
1	A	195	ASN	N-CA-C	5.46	125.75	111.00
1	A	563	LEU	CA-CB-CG	5.43	127.79	115.30
1	A	219	LEU	CA-CB-CG	5.42	127.76	115.30
1	A	1567	LEU	CA-CB-CG	-5.29	103.12	115.30
1	A	1551	GLU	C-N-CA	5.26	134.85	121.70
1	A	119	LEU	CA-CB-CG	5.18	127.22	115.30
1	A	209	ILE	CG1-CB-CG2	-5.14	100.08	111.40
3	C	57	C	C5-C6-N1	5.09	123.55	121.00
1	A	368	LEU	CB-CA-C	5.07	119.83	110.20
1	A	128	GLU	C-N-CA	5.04	134.29	121.70
3	C	13	U	C5-C6-N1	5.02	125.21	122.70
1	A	374	THR	C-N-CD	-5.01	109.58	120.60

There are no chirality outliers.

All (40) planarity outliers are listed below:

Mol	Chain	Res	Type	Group
1	A	116	HIS	Peptide
1	A	124	TYR	Peptide
1	A	126	ASN	Peptide
1	A	128	GLU	Peptide
1	A	1312	LEU	Peptide

Continued on next page...

Continued from previous page...

Mol	Chain	Res	Type	Group
1	A	1333	CYS	Peptide
1	A	134	THR	Peptide
1	A	1375	ASP	Peptide
1	A	1376	PRO	Peptide
1	A	142	PHE	Peptide
1	A	150	MET	Peptide
1	A	1603	LEU	Peptide
1	A	1605	PRO	Peptide
1	A	164	LEU	Peptide
1	A	167	SER	Peptide
1	A	1687	PHE	Peptide
1	A	1698	THR	Peptide
1	A	1752	TYR	Peptide
1	A	1848	ASN	Peptide
1	A	1873	THR	Peptide
1	A	207	ALA	Peptide
1	A	211	ASN	Peptide
1	A	217	GLU	Peptide
1	A	236	THR	Peptide
1	A	238	THR	Peptide
1	A	256	ASP	Peptide
1	A	367	SER	Peptide
1	A	441	ILE	Peptide
1	A	442	LEU	Peptide
1	A	476	SER	Peptide
1	A	478	PHE	Peptide
1	A	493	GLN	Peptide
1	A	542	GLU	Peptide
1	A	661	GLY	Peptide
1	A	671	ILE	Peptide
1	A	675	LEU	Peptide
1	A	713	MET	Peptide
1	A	865	LEU	Peptide
1	A	93	GLY	Peptide
2	B	311	TYR	Peptide

5.2 Too-close contacts

In the following table, the Non-H and H(model) columns list the number of non-hydrogen atoms and hydrogen atoms in the chain respectively. The H(added) column lists the number of hydrogen atoms added and optimized by MolProbity. The Clashes column lists the number of clashes within the asymmetric unit, whereas Symm-Clashes lists symmetry-related clashes.

Mol	Chain	Non-H	H(model)	H(added)	Clashes	Symm-Clashes
1	A	10552	0	10711	496	0
2	B	560	0	559	26	0
3	C	933	0	473	32	0
All	All	12045	0	11743	536	0

The all-atom clashscore is defined as the number of clashes found per 1000 atoms (including hydrogen atoms). The all-atom clashscore for this structure is 23.

All (536) close contacts within the same asymmetric unit are listed below, sorted by their clash magnitude.

Atom-1	Atom-2	Interatomic distance (Å)	Clash overlap (Å)
1:A:641:LEU:HD21	1:A:670:PRO:CG	1.41	1.46
1:A:641:LEU:CD2	1:A:670:PRO:HG3	1.55	1.37
1:A:295:SER:OG	1:A:344:PHE:HD2	1.03	1.28
1:A:286:ILE:HD11	2:B:315:GLU:CD	1.64	1.17
3:C:2:G:O6	3:C:70:U:C4	2.00	1.13
1:A:641:LEU:CD2	1:A:670:PRO:CG	2.15	1.12
1:A:640:ARG:O	1:A:712:LEU:HD22	1.51	1.08
1:A:641:LEU:HD23	1:A:643:SER:HB2	1.10	1.08
1:A:641:LEU:HD23	1:A:643:SER:CB	1.84	1.07
1:A:109:GLN:O	1:A:113:VAL:HB	1.62	0.99
1:A:641:LEU:HB3	1:A:643:SER:N	1.80	0.96
1:A:294:ASP:O	1:A:296:THR:N	2.01	0.93
1:A:641:LEU:HA	1:A:672:ASN:HD21	1.36	0.89
1:A:1020:ARG:O	1:A:1024:TRP:HB3	1.73	0.89
1:A:295:SER:OG	1:A:344:PHE:CD2	1.86	0.88
1:A:633:HIS:O	1:A:636:ARG:HB3	1.72	0.87
1:A:1659:LEU:O	1:A:1662:LEU:HB2	1.74	0.87
1:A:933:ILE:O	1:A:1038:CYS:HA	1.76	0.86
1:A:641:LEU:CD2	1:A:643:SER:HB2	2.02	0.85
1:A:572:PHE:O	1:A:576:LEU:HB2	1.79	0.83
1:A:295:SER:HB3	1:A:341:HIS:CD2	2.13	0.82
1:A:641:LEU:HD21	1:A:670:PRO:CB	2.08	0.82
3:C:12:G:H1	3:C:60:U:H3	0.84	0.82
1:A:294:ASP:C	1:A:296:THR:H	1.80	0.82
1:A:457:LEU:O	1:A:461:ILE:HB	1.80	0.82
1:A:641:LEU:HB3	1:A:642:PRO:C	2.02	0.79
2:B:329:LEU:HB2	2:B:335:THR:O	1.84	0.78
3:C:2:G:N1	3:C:70:U:C2	2.52	0.77
1:A:641:LEU:CA	1:A:672:ASN:HD21	1.98	0.75
1:A:641:LEU:CD2	1:A:670:PRO:HG2	2.16	0.75
1:A:571:SER:HA	1:A:574:GLU:HB3	1.68	0.75

Continued on next page...

Continued from previous page...

Atom-1	Atom-2	Interatomic distance (Å)	Clash overlap (Å)
1:A:1656:ASP:O	1:A:1659:LEU:HB2	1.85	0.75
1:A:286:ILE:HD11	2:B:315:GLU:OE2	1.85	0.75
1:A:136:GLU:HB3	1:A:139:ASN:H	1.52	0.74
1:A:946:TYR:HB2	1:A:991:ASP:HB3	1.70	0.74
1:A:1702:GLN:O	1:A:1705:GLU:HB3	1.86	0.74
3:C:2:G:C6	3:C:70:U:C4	2.75	0.74
1:A:1701:TYR:O	1:A:1704:LEU:HB2	1.87	0.74
1:A:257:CYS:HA	1:A:565:ASP:HA	1.70	0.74
1:A:136:GLU:H	1:A:138:TRP:HD1	1.35	0.73
3:C:2:G:C6	3:C:70:U:N3	2.57	0.73
1:A:295:SER:CB	1:A:344:PHE:HD2	2.01	0.73
1:A:65:ASN:HD21	1:A:544:ARG:HD2	1.53	0.72
1:A:806:THR:HG22	1:A:876:TYR:HB2	1.71	0.72
1:A:641:LEU:HA	1:A:642:PRO:O	1.89	0.72
1:A:1350:LYS:HA	1:A:1355:ASN:HD22	1.55	0.72
1:A:565:ASP:HB3	1:A:568:LYS:HB2	1.72	0.71
1:A:769:TYR:HA	1:A:834:SER:HA	1.73	0.70
1:A:770:LEU:HB3	1:A:833:LYS:H	1.53	0.70
1:A:286:ILE:HD11	2:B:315:GLU:OE1	1.91	0.70
1:A:1369:MET:SD	1:A:1551:GLU:N	2.63	0.70
1:A:443:CYS:SG	1:A:444:GLY:N	2.65	0.70
1:A:1583:LEU:O	1:A:1587:GLY:N	2.25	0.70
3:C:5:G:N2	3:C:67:U:O2	2.25	0.69
1:A:948:ALA:HB2	1:A:991:ASP:HB2	1.75	0.68
1:A:972:TYR:HB3	1:A:978:LEU:HB2	1.74	0.68
1:A:1762:SER:HB3	1:A:1765:LEU:HD23	1.75	0.68
1:A:1689:HIS:HB3	1:A:1760:ALA:HB2	1.75	0.67
1:A:641:LEU:HD21	1:A:670:PRO:HG3	0.69	0.67
1:A:1339:HIS:HB2	1:A:1342:ARG:HB3	1.76	0.67
1:A:649:LEU:HB2	1:A:1691:SER:HB3	1.77	0.67
1:A:458:ASN:HA	1:A:469:PRO:HB2	1.76	0.66
1:A:641:LEU:CG	1:A:670:PRO:HG3	2.24	0.66
1:A:329:LEU:HD11	1:A:345:LEU:HD22	1.77	0.66
1:A:640:ARG:O	1:A:712:LEU:CD2	2.37	0.66
3:C:2:G:O6	3:C:70:U:C5	2.49	0.66
1:A:641:LEU:CB	1:A:642:PRO:C	2.64	0.66
1:A:1703:ARG:O	1:A:1706:PHE:HB3	1.96	0.66
1:A:932:ILE:HA	1:A:1039:ALA:O	1.96	0.65
1:A:1742:ASN:ND2	1:A:1806:LYS:O	2.29	0.65
1:A:1365:LEU:HA	1:A:1368:ARG:HD3	1.78	0.65
1:A:61:ILE:H	1:A:234:ALA:HA	1.61	0.65

Continued on next page...

Continued from previous page...

Atom-1	Atom-2	Interatomic distance (Å)	Clash overlap (Å)
1:A:1742:ASN:HA	1:A:1745:PHE:HB2	1.78	0.65
3:C:5:G:N1	3:C:67:U:N3	2.45	0.64
1:A:906:ARG:HG3	1:A:907:ILE:HG12	1.80	0.64
1:A:1002:PRO:O	1:A:1006:ASN:N	2.31	0.64
1:A:881:LEU:HB3	1:A:890:LEU:HB3	1.80	0.63
1:A:641:LEU:CA	1:A:642:PRO:C	2.65	0.63
1:A:294:ASP:O	1:A:296:THR:HG23	1.98	0.63
1:A:489:PRO:HB3	1:A:495:GLU:HA	1.80	0.63
1:A:773:ILE:H	1:A:803:GLY:HA2	1.64	0.63
1:A:1656:ASP:HA	1:A:1659:LEU:HD13	1.81	0.63
1:A:475:SER:HB2	1:A:497:GLU:H	1.63	0.62
1:A:631:ILE:O	1:A:635:ASN:N	2.32	0.62
1:A:1867:PHE:HA	1:A:1883:GLU:H	1.64	0.62
1:A:1688:THR:O	1:A:1695:ASN:ND2	2.33	0.62
1:A:339:GLU:HG3	2:B:312:LEU:HD12	1.81	0.62
1:A:513:THR:HA	1:A:516:LEU:HB2	1.81	0.62
1:A:772:VAL:HB	1:A:830:GLU:H	1.64	0.62
1:A:1887:LYS:HD2	1:A:1912:LEU:HA	1.79	0.62
1:A:1707:LEU:O	1:A:1710:ALA:HB3	2.00	0.62
1:A:318:ALA:O	1:A:322:ALA:HB2	2.00	0.61
1:A:879:LEU:HD13	1:A:892:ILE:HG12	1.82	0.61
3:C:3:A:H2'	3:C:4:G:C8	2.35	0.61
1:A:641:LEU:HA	1:A:642:PRO:C	2.21	0.61
1:A:1692:TYR:HA	1:A:1761:VAL:HG23	1.82	0.61
3:C:12:G:O6	3:C:60:U:O4	2.19	0.61
1:A:771:TYR:HA	1:A:831:LEU:HA	1.82	0.61
1:A:241:VAL:HB	1:A:587:ARG:HG2	1.82	0.61
1:A:374:THR:OG1	1:A:379:LYS:N	2.33	0.61
1:A:1657:LYS:O	1:A:1660:ASN:HB2	2.00	0.61
1:A:1688:THR:HG22	1:A:1695:ASN:HB2	1.83	0.61
1:A:137:ARG:HB2	1:A:141:GLU:HG2	1.82	0.61
1:A:238:THR:HB	1:A:548:GLN:HE22	1.66	0.61
1:A:1028:GLN:NE2	3:C:71:A:OP1	2.33	0.61
1:A:1332:PHE:HE1	1:A:1703:ARG:HB3	1.66	0.61
1:A:1684:LEU:O	1:A:1688:THR:OG1	2.14	0.60
1:A:257:CYS:HB3	1:A:567:ASP:HB3	1.83	0.60
1:A:1339:HIS:H	1:A:1343:LEU:HD13	1.66	0.60
1:A:948:ALA:HB3	1:A:989:ASP:O	2.01	0.60
1:A:945:PHE:HD1	1:A:992:HIS:HA	1.66	0.60
1:A:143:THR:OG1	1:A:144:LYS:N	2.34	0.60
1:A:1067:ALA:HB2	1:A:1298:LEU:HD12	1.84	0.60

Continued on next page...

Continued from previous page...

Atom-1	Atom-2	Interatomic distance (Å)	Clash overlap (Å)
1:A:1880:VAL:HG11	1:A:1901:LYS:HE2	1.84	0.60
1:A:932:ILE:HG13	1:A:945:PHE:HB2	1.84	0.59
1:A:376:LYS:HG3	1:A:377:VAL:HG23	1.83	0.59
1:A:484:ILE:HG21	1:A:494:MET:HB2	1.84	0.59
1:A:677:ALA:H	1:A:1617:LEU:HD23	1.68	0.59
1:A:226:LEU:HA	1:A:229:ILE:HD12	1.84	0.59
3:C:5:G:N1	3:C:67:U:C2	2.70	0.59
1:A:351:PHE:HA	1:A:354:LYS:HE2	1.84	0.59
1:A:635:ASN:HA	1:A:638:CYS:HB3	1.84	0.59
1:A:1777:LEU:H	1:A:1780:ASN:HD21	1.51	0.59
1:A:586:LEU:O	1:A:590:CYS:HB2	2.02	0.59
1:A:1340:GLU:O	1:A:1344:SER:HB3	2.03	0.59
1:A:630:ALA:O	1:A:633:HIS:ND1	2.36	0.59
3:C:2:G:N1	3:C:70:U:N3	2.51	0.59
1:A:84:GLN:HG2	1:A:85:ILE:HD12	1.84	0.58
1:A:853:ILE:HA	1:A:857:ILE:HD12	1.85	0.58
1:A:1614:GLN:O	1:A:1618:SER:OG	2.17	0.58
1:A:1771:ASP:O	1:A:1775:PHE:HB2	2.03	0.58
1:A:294:ASP:C	1:A:296:THR:N	2.49	0.58
1:A:536:ARG:HH22	1:A:541:THR:HG22	1.68	0.58
1:A:884:VAL:O	1:A:888:SER:N	2.35	0.58
3:C:55:U:H3'	3:C:56:A:H8	1.68	0.58
1:A:641:LEU:CD2	1:A:670:PRO:CB	2.75	0.58
1:A:94:LYS:HG2	1:A:96:THR:HG23	1.85	0.58
1:A:89:PHE:H	1:A:146:GLN:HE22	1.51	0.58
1:A:95:ARG:NH1	1:A:168:ASP:O	2.30	0.57
1:A:230:LEU:HD13	1:A:232:SER:HB3	1.87	0.57
1:A:322:ALA:HA	1:A:352:LEU:HD22	1.85	0.57
1:A:782:PRO:O	1:A:786:ASN:N	2.37	0.57
1:A:640:ARG:HH12	1:A:702:LEU:HD11	1.69	0.57
1:A:956:PRO:HG3	1:A:987:LEU:HD21	1.85	0.57
1:A:1069:GLU:O	1:A:1073:GLN:NE2	2.35	0.57
1:A:376:LYS:HA	1:A:380:LEU:HD22	1.86	0.57
1:A:1612:SER:O	1:A:1616:ASN:ND2	2.38	0.57
1:A:376:LYS:HD3	1:A:441:ILE:HG13	1.86	0.57
1:A:633:HIS:O	1:A:636:ARG:CB	2.51	0.57
1:A:1611:ASN:O	1:A:1615:LYS:NZ	2.33	0.57
1:A:541:THR:OG1	1:A:542:GLU:N	2.38	0.57
1:A:1682:TYR:HB3	1:A:1818:ALA:HB1	1.85	0.57
1:A:181:ILE:O	1:A:187:ARG:NH1	2.32	0.57
1:A:769:TYR:HE2	1:A:809:PRO:HG3	1.68	0.57

Continued on next page...

Continued from previous page...

Atom-1	Atom-2	Interatomic distance (Å)	Clash overlap (Å)
1:A:931:VAL:O	1:A:1040:ILE:HA	2.04	0.57
1:A:1688:THR:HA	1:A:1759:LYS:HB2	1.87	0.57
1:A:474:ILE:HG23	1:A:483:GLY:HA2	1.86	0.56
1:A:1660:ASN:HA	1:A:1663:ILE:HG12	1.86	0.56
1:A:579:TYR:HA	1:A:582:ILE:HD12	1.85	0.56
1:A:377:VAL:O	1:A:381:LEU:HB2	2.05	0.56
1:A:447:PHE:HB2	1:A:536:ARG:HA	1.86	0.56
1:A:572:PHE:O	1:A:576:LEU:CB	2.51	0.56
1:A:1908:ALA:O	1:A:1912:LEU:HB2	2.06	0.56
1:A:116:HIS:NE2	1:A:1770:ASP:OD1	2.35	0.56
3:C:5:G:C2	3:C:67:U:O2	2.58	0.56
1:A:274:LEU:HG	1:A:303:LEU:HD22	1.86	0.56
1:A:295:SER:OG	1:A:344:PHE:CE2	2.52	0.56
1:A:1819:ILE:O	1:A:1823:SER:N	2.39	0.56
1:A:89:PHE:HB3	1:A:143:THR:HA	1.87	0.56
1:A:178:HIS:ND1	1:A:206:THR:OG1	2.32	0.56
1:A:1607:ARG:NH2	1:A:1682:TYR:OH	2.39	0.56
1:A:251:CYS:H	1:A:559:ASN:HA	1.71	0.56
1:A:294:ASP:OD1	1:A:297:LEU:HB3	2.06	0.55
1:A:582:ILE:HA	1:A:585:ILE:HD12	1.89	0.55
1:A:768:CYS:HB2	1:A:805:LEU:HG	1.88	0.55
1:A:946:TYR:HD1	1:A:1045:ALA:HB1	1.71	0.55
1:A:1744:ILE:HD12	1:A:1841:LEU:HD21	1.88	0.55
1:A:165:SER:N	1:A:168:ASP:OD2	2.39	0.55
1:A:294:ASP:OD1	1:A:297:LEU:CB	2.54	0.55
1:A:88:ASP:HB3	1:A:92:ASN:HD22	1.72	0.55
1:A:319:ASP:O	1:A:356:HIS:ND1	2.38	0.55
3:C:5:G:C6	3:C:67:U:N3	2.75	0.55
1:A:126:ASN:OD1	1:A:131:ALA:N	2.31	0.55
1:A:446:ILE:HA	1:A:535:VAL:HB	1.87	0.55
1:A:641:LEU:CB	1:A:642:PRO:CA	2.83	0.55
1:A:486:LYS:HG2	1:A:522:VAL:HG22	1.89	0.55
2:B:358:TYR:HA	2:B:361:ILE:HD12	1.88	0.55
1:A:126:ASN:HB3	1:A:129:VAL:HG13	1.87	0.55
1:A:312:VAL:HG12	1:A:313:LEU:HG	1.89	0.55
1:A:1020:ARG:HE	3:C:3:A:H1'	1.72	0.55
1:A:648:HIS:O	1:A:1689:HIS:NE2	2.32	0.55
1:A:168:ASP:N	1:A:198:SER:O	2.36	0.54
1:A:243:LEU:O	1:A:554:ARG:NH1	2.40	0.54
1:A:283:ASP:OD2	2:B:318:SER:OG	2.24	0.54
1:A:658:LEU:H	1:A:663:PHE:HA	1.73	0.54

Continued on next page...

Continued from previous page...

Atom-1	Atom-2	Interatomic distance (Å)	Clash overlap (Å)
1:A:305:ASP:OD2	1:A:450:ARG:NH1	2.39	0.54
1:A:1354:CYS:HA	1:A:1357:TYR:HB3	1.90	0.54
1:A:315:PRO:HD2	1:A:388:LYS:HD3	1.89	0.54
1:A:443:CYS:HB3	1:A:531:CYS:HA	1.89	0.54
2:B:291:GLY:HA2	2:B:294:CYS:H	1.71	0.54
1:A:636:ARG:HH22	1:A:702:LEU:HD22	1.72	0.54
1:A:1016:SER:OG	3:C:3:A:O2'	2.22	0.54
1:A:59:ASN:N	1:A:59:ASN:OD1	2.40	0.54
1:A:320:LYS:HE2	1:A:460:LEU:HB2	1.89	0.54
1:A:369:ASP:HB3	1:A:370:LEU:HB3	1.90	0.54
1:A:1741:ASN:HB3	1:A:1744:ILE:HG12	1.89	0.54
1:A:74:ALA:HA	1:A:77:LEU:HD12	1.90	0.54
1:A:170:ASN:HA	1:A:199:CYS:HA	1.89	0.54
1:A:641:LEU:CG	1:A:670:PRO:CG	2.84	0.54
1:A:998:ASN:HD22	1:A:1373:ILE:HA	1.71	0.54
1:A:190:MET:O	1:A:194:GLU:N	2.41	0.54
1:A:1748:LEU:O	1:A:1752:TYR:N	2.41	0.53
1:A:1879:ARG:HG2	1:A:1891:LYS:HB3	1.91	0.53
1:A:59:ASN:O	1:A:233:ASN:N	2.41	0.53
3:C:1:U:O4	3:C:73:C:N4	2.41	0.53
1:A:374:THR:HG21	1:A:378:ILE:H	1.72	0.53
1:A:632:GLY:O	1:A:635:ASN:HB3	2.09	0.53
1:A:1009:GLY:HA2	1:A:1013:PRO:HG2	1.89	0.53
1:A:1352:SER:OG	1:A:1353:ASN:N	2.41	0.53
1:A:1771:ASP:O	1:A:1775:PHE:CB	2.57	0.53
1:A:66:THR:HG22	1:A:69:GLY:H	1.73	0.53
1:A:679:ILE:HG13	1:A:1617:LEU:HD11	1.91	0.53
1:A:864:ALA:HA	1:A:873:ASP:HB2	1.90	0.53
1:A:468:ASP:HA	1:A:516:LEU:HD23	1.91	0.53
1:A:862:LYS:HA	1:A:869:PRO:HA	1.91	0.53
1:A:1757:TYR:O	1:A:1759:LYS:NZ	2.33	0.53
1:A:655:THR:HG22	1:A:667:LEU:HD21	1.91	0.52
1:A:784:GLU:HG2	1:A:785:LEU:HG	1.91	0.52
1:A:218:GLU:HB2	1:A:221:GLU:HB3	1.91	0.52
1:A:1611:ASN:HB2	1:A:1679:ASN:HD22	1.75	0.52
1:A:246:TYR:HB3	1:A:554:ARG:HH22	1.73	0.52
1:A:643:SER:OG	1:A:672:ASN:N	2.42	0.52
1:A:299:SER:OG	1:A:348:THR:OG1	2.28	0.52
1:A:1852:SER:HG	1:A:1898:ARG:HH21	1.55	0.52
1:A:244:ASP:OD1	1:A:247:THR:OG1	2.22	0.52
1:A:960:PHE:HB2	1:A:965:TYR:HB2	1.91	0.52

Continued on next page...

Continued from previous page...

Atom-1	Atom-2	Interatomic distance (Å)	Clash overlap (Å)
1:A:450:ARG:HA	1:A:521:ILE:HD13	1.91	0.52
1:A:264:SER:HB3	1:A:267:TYR:HB3	1.92	0.52
1:A:1715:LEU:O	1:A:1718:LYS:HB3	2.10	0.52
1:A:343:LYS:HG3	2:B:312:LEU:HD13	1.92	0.51
1:A:724:GLU:HG2	1:A:727:ASP:HB2	1.92	0.51
1:A:791:LYS:O	1:A:1049:ARG:NH2	2.32	0.51
1:A:935:ARG:NE	1:A:1036:GLU:O	2.35	0.51
1:A:279:ASN:O	1:A:283:ASP:HB2	2.09	0.51
1:A:792:LEU:HD13	1:A:822:SER:HA	1.92	0.51
1:A:239:ASP:HB3	1:A:551:GLY:HA3	1.91	0.51
1:A:283:ASP:OD2	2:B:324:GLN:NE2	2.43	0.51
1:A:442:LEU:HA	1:A:515:LEU:HD13	1.92	0.51
1:A:949:ASP:O	1:A:989:ASP:N	2.44	0.51
1:A:1313:GLU:HA	1:A:1316:GLU:HB3	1.93	0.51
1:A:1894:GLY:HA3	1:A:1899:ILE:HG22	1.93	0.51
1:A:284:CYS:O	1:A:285:ASN:HB3	2.10	0.51
1:A:1595:LYS:HG3	1:A:1598:ASP:HB2	1.92	0.51
1:A:631:ILE:HA	1:A:634:ILE:HB	1.93	0.51
1:A:1044:PRO:HD2	1:A:1047:LEU:HD23	1.92	0.51
1:A:1669:PHE:HZ	1:A:1756:LYS:HB2	1.75	0.51
1:A:929:ASP:OD1	1:A:1046:SER:N	2.36	0.51
1:A:959:LYS:HG3	1:A:966:GLU:HA	1.92	0.51
1:A:1034:VAL:HG12	1:A:1036:GLU:H	1.76	0.51
1:A:973:LYS:HA	1:A:978:LEU:H	1.75	0.50
1:A:48:GLN:HA	1:A:51:LEU:HD12	1.92	0.50
1:A:548:GLN:O	1:A:552:ARG:NH2	2.37	0.50
1:A:1659:LEU:HG	1:A:1662:LEU:HD12	1.93	0.50
1:A:174:PHE:HB2	1:A:204:GLY:HA2	1.92	0.50
1:A:116:HIS:H	1:A:117:SER:HB3	1.76	0.50
1:A:126:ASN:O	1:A:130:ASN:N	2.44	0.50
1:A:174:PHE:N	1:A:203:LEU:O	2.43	0.50
1:A:710:ASP:HB2	1:A:1342:ARG:HH21	1.77	0.50
3:C:12:G:N2	3:C:60:U:O2	2.35	0.50
1:A:227:GLU:O	1:A:231:LYS:N	2.40	0.50
1:A:636:ARG:HH12	1:A:702:LEU:HD13	1.76	0.50
1:A:98:PHE:HA	1:A:173:VAL:O	2.12	0.50
1:A:447:PHE:N	1:A:535:VAL:O	2.27	0.50
1:A:1902:SER:OG	1:A:1906:ARG:NH2	2.45	0.50
2:B:331:THR:OG1	2:B:333:PRO:O	2.28	0.50
1:A:285:ASN:HD22	2:B:319:LEU:HD21	1.77	0.49
1:A:286:ILE:O	1:A:287:SER:HB2	2.12	0.49

Continued on next page...

Continued from previous page...

Atom-1	Atom-2	Interatomic distance (Å)	Clash overlap (Å)
2:B:310:SER:N	2:B:328:GLU:O	2.39	0.49
1:A:504:VAL:HA	1:A:507:LYS:HD3	1.95	0.49
1:A:894:PHE:HA	1:A:897:MET:HE2	1.93	0.49
1:A:992:HIS:HB3	1:A:1029:ASN:HD21	1.77	0.49
1:A:449:GLU:HG2	1:A:450:ARG:HG3	1.95	0.49
1:A:1342:ARG:HG3	1:A:1343:LEU:HD12	1.94	0.49
1:A:165:SER:OG	1:A:168:ASP:OD1	2.31	0.49
1:A:309:VAL:HA	1:A:312:VAL:HB	1.94	0.49
1:A:640:ARG:HG3	1:A:672:ASN:ND2	2.27	0.49
1:A:1335:TYR:HD2	1:A:1343:LEU:HD11	1.77	0.49
1:A:935:ARG:HD3	1:A:1039:ALA:HB2	1.94	0.49
2:B:328:GLU:HA	2:B:336:VAL:HG12	1.94	0.49
1:A:46:LYS:HD2	1:A:654:ARG:HD2	1.95	0.49
1:A:475:SER:HA	1:A:500:LYS:HB2	1.94	0.49
1:A:318:ALA:O	1:A:322:ALA:CB	2.61	0.49
1:A:466:LYS:HG2	1:A:468:ASP:H	1.78	0.49
1:A:1016:SER:HG	3:C:3:A:HO2'	1.59	0.49
1:A:240:LEU:HA	1:A:243:LEU:HG	1.95	0.48
1:A:1839:ARG:HA	1:A:1842:ILE:HD12	1.95	0.48
2:B:359:LEU:O	2:B:363:ALA:N	2.46	0.48
1:A:90:SER:OG	1:A:91:ARG:NH1	2.46	0.48
1:A:770:LEU:O	1:A:832:LYS:N	2.39	0.48
1:A:840:LEU:HD12	1:A:843:LEU:HB2	1.95	0.48
1:A:373:VAL:HG23	1:A:466:LYS:HE2	1.94	0.48
1:A:535:VAL:HA	1:A:561:ILE:O	2.14	0.48
1:A:667:LEU:N	1:A:678:SER:OG	2.46	0.48
1:A:118:ASP:HB2	1:A:1756:LYS:HD3	1.95	0.48
1:A:589:LYS:O	1:A:593:SER:HB3	2.13	0.48
1:A:641:LEU:HD23	1:A:670:PRO:CG	2.30	0.48
1:A:59:ASN:ND2	1:A:202:ILE:O	2.36	0.48
1:A:959:LYS:HG2	1:A:960:PHE:H	1.78	0.48
1:A:1044:PRO:O	1:A:1048:TRP:N	2.42	0.48
1:A:1868:SER:HB3	1:A:1881:THR:HB	1.94	0.48
1:A:278:LEU:O	1:A:282:ASN:ND2	2.47	0.48
1:A:380:LEU:O	1:A:384:LEU:HB2	2.14	0.48
1:A:972:TYR:O	1:A:978:LEU:N	2.45	0.48
1:A:1340:GLU:O	1:A:1344:SER:CB	2.62	0.48
1:A:73:ILE:HA	1:A:76:LEU:HD12	1.96	0.48
1:A:316:TRP:CZ2	1:A:460:LEU:HB3	2.49	0.48
1:A:768:CYS:O	1:A:835:GLY:N	2.46	0.48
1:A:1025:GLU:O	1:A:1029:ASN:ND2	2.47	0.48

Continued on next page...

Continued from previous page...

Atom-1	Atom-2	Interatomic distance (Å)	Clash overlap (Å)
1:A:124:TYR:HE2	1:A:148:LEU:HD13	1.79	0.48
1:A:327:ARG:NH2	3:C:45:G:O6	2.46	0.48
1:A:644:ASP:HB2	1:A:671:ILE:HD11	1.96	0.48
1:A:1655:ALA:O	1:A:1658:THR:OG1	2.22	0.48
1:A:1739:LEU:HD13	1:A:1842:ILE:HG12	1.96	0.48
1:A:286:ILE:HG12	1:A:340:LEU:HD21	1.96	0.47
1:A:583:GLU:O	1:A:587:ARG:HG3	2.14	0.47
1:A:1618:SER:HA	1:A:1697:ILE:HG21	1.96	0.47
2:B:318:SER:OG	2:B:324:GLN:NE2	2.46	0.47
1:A:51:LEU:HD22	1:A:62:VAL:HG22	1.95	0.47
1:A:636:ARG:HD3	1:A:637:TYR:CZ	2.49	0.47
1:A:1762:SER:OG	1:A:1764:GLU:OE2	2.31	0.47
1:A:92:ASN:O	1:A:95:ARG:NH2	2.45	0.47
1:A:235:GLU:OE1	1:A:593:SER:OG	2.33	0.47
1:A:271:LEU:HD11	1:A:307:ARG:HG3	1.97	0.47
1:A:278:LEU:HA	1:A:281:ILE:HG22	1.95	0.47
1:A:445:ILE:H	1:A:534:VAL:HA	1.79	0.47
1:A:508:PHE:HD1	1:A:513:THR:HG22	1.79	0.47
1:A:1872:ARG:HA	1:A:1879:ARG:H	1.80	0.47
1:A:932:ILE:HB	1:A:1038:CYS:HB3	1.96	0.47
1:A:1911:SER:O	3:C:13:U:O2'	2.28	0.47
1:A:380:LEU:HD23	1:A:533:LEU:HD22	1.96	0.47
1:A:443:CYS:HB2	1:A:514:ASN:HB3	1.96	0.47
1:A:321:VAL:HA	1:A:324:MET:HB2	1.97	0.47
1:A:1321:SER:HB2	1:A:1714:TYR:HA	1.96	0.47
1:A:1600:GLU:HA	1:A:1601:LYS:HA	1.62	0.47
1:A:151:THR:H	1:A:154:VAL:HB	1.80	0.47
1:A:641:LEU:CA	1:A:672:ASN:ND2	2.74	0.47
1:A:771:TYR:N	1:A:804:ILE:O	2.48	0.47
1:A:1716:ILE:O	1:A:1720:LEU:N	2.42	0.47
1:A:120:LYS:HZ2	1:A:146:GLN:HG2	1.80	0.47
1:A:244:ASP:HA	1:A:554:ARG:HH11	1.79	0.47
1:A:863:PRO:HD2	1:A:870:THR:H	1.80	0.47
1:A:512:GLU:O	1:A:516:LEU:N	2.29	0.46
1:A:85:ILE:O	1:A:94:LYS:HB2	2.15	0.46
1:A:225:LYS:HA	1:A:228:LYS:HE3	1.96	0.46
1:A:820:THR:OG1	1:A:823:GLY:N	2.39	0.46
1:A:877:CYS:HB3	1:A:879:LEU:HD23	1.97	0.46
1:A:932:ILE:O	1:A:945:PHE:N	2.48	0.46
1:A:244:ASP:OD1	1:A:248:SER:N	2.48	0.46
1:A:640:ARG:HG2	1:A:669:LEU:HD13	1.97	0.46

Continued on next page...

Continued from previous page...

Atom-1	Atom-2	Interatomic distance (Å)	Clash overlap (Å)
1:A:996:ARG:NH1	1:A:1001:THR:OG1	2.48	0.46
1:A:319:ASP:OD2	1:A:320:LYS:NZ	2.31	0.46
1:A:488:GLN:HB3	1:A:490:ARG:HG2	1.96	0.46
1:A:946:TYR:HH	1:A:1048:TRP:HD1	1.63	0.46
1:A:1766:PHE:HD1	1:A:1769:ILE:HD12	1.81	0.46
3:C:59:A:H2'	3:C:60:U:C6	2.51	0.46
1:A:999:LEU:H	1:A:1056:SER:HG	1.63	0.46
1:A:236:THR:HG21	1:A:586:LEU:HD11	1.97	0.46
1:A:342:ARG:NH1	2:B:328:GLU:OE2	2.37	0.46
1:A:472:ALA:HB3	1:A:485:GLY:HA2	1.96	0.46
1:A:1374:PHE:CG	1:A:1375:ASP:HA	2.51	0.46
1:A:128:GLU:H	1:A:130:ASN:H	1.64	0.46
1:A:1704:LEU:HB3	1:A:1814:SER:HA	1.98	0.46
1:A:1732:LEU:HD23	1:A:1735:LEU:HD12	1.97	0.46
1:A:124:TYR:OH	1:A:141:GLU:OE2	2.33	0.46
1:A:724:GLU:HA	1:A:727:ASP:H	1.81	0.46
1:A:1725:ARG:NH2	1:A:1843:GLU:OE1	2.49	0.46
1:A:353:ARG:HH12	2:B:333:PRO:HG2	1.81	0.45
1:A:949:ASP:HB3	1:A:989:ASP:HB3	1.98	0.45
1:A:1880:VAL:HG21	1:A:1901:LYS:HB2	1.97	0.45
1:A:89:PHE:HA	1:A:95:ARG:HE	1.81	0.45
1:A:99:LEU:HD11	1:A:186:TYR:HE1	1.80	0.45
1:A:1892:GLY:HA3	1:A:1903:ALA:HB3	1.98	0.45
1:A:111:SER:O	1:A:115:THR:OG1	2.29	0.45
1:A:994:SER:OG	1:A:1025:GLU:OE2	2.34	0.45
1:A:208:SER:OG	1:A:209:ILE:N	2.49	0.45
1:A:1668:ASN:O	1:A:1671:LYS:HB2	2.16	0.45
1:A:86:ARG:HG2	1:A:94:LYS:HE2	1.99	0.45
1:A:166:LEU:HD11	1:A:197:PRO:HG2	1.99	0.45
1:A:343:LYS:HD2	2:B:336:VAL:HG11	1.98	0.45
1:A:765:ASP:HB2	1:A:840:LEU:HD13	1.99	0.45
1:A:1601:LYS:HG2	1:A:1605:PRO:HG3	1.98	0.45
1:A:371:LYS:HB3	1:A:373:VAL:HG13	1.99	0.45
1:A:634:ILE:HA	1:A:637:TYR:HD2	1.81	0.45
1:A:920:PHE:HB3	1:A:982:ASN:HB2	1.99	0.45
1:A:1325:HIS:HA	1:A:1710:ALA:HB1	1.98	0.45
1:A:121:VAL:HG12	1:A:147:VAL:HB	1.99	0.45
1:A:508:PHE:HA	1:A:513:THR:HB	1.99	0.45
1:A:851:GLN:O	1:A:855:SER:N	2.41	0.45
1:A:1890:PHE:HB3	1:A:1907:ARG:HH11	1.81	0.45
1:A:137:ARG:HB3	1:A:140:GLN:H	1.82	0.44

Continued on next page...

Continued from previous page...

Atom-1	Atom-2	Interatomic distance (Å)	Clash overlap (Å)
1:A:169:ILE:HB	1:A:172:LEU:HD23	1.99	0.44
1:A:686:CYS:HB2	1:A:689:LEU:HB2	2.00	0.44
1:A:865:LEU:HD21	1:A:1058:LEU:HD13	1.99	0.44
1:A:113:VAL:O	1:A:117:SER:OG	2.23	0.44
1:A:154:VAL:HA	1:A:157:ASN:HD22	1.82	0.44
1:A:368:LEU:HG	1:A:460:LEU:HD21	1.99	0.44
1:A:494:MET:HB3	1:A:495:GLU:H	1.55	0.44
1:A:536:ARG:HD2	1:A:549:SER:HB2	1.98	0.44
1:A:1661:HIS:O	1:A:1664:SER:HB2	2.18	0.44
1:A:236:THR:OG1	1:A:590:CYS:SG	2.71	0.44
1:A:786:ASN:O	1:A:789:ARG:NH1	2.50	0.44
1:A:1020:ARG:O	1:A:1024:TRP:CB	2.55	0.44
1:A:1324:LYS:O	1:A:1328:THR:OG1	2.23	0.44
1:A:85:ILE:HA	1:A:1661:HIS:CE1	2.52	0.44
1:A:1708:GLY:HA3	1:A:1813:GLU:O	2.17	0.44
1:A:1714:TYR:O	1:A:1718:LYS:N	2.39	0.44
3:C:7:A:H2'	3:C:8:G:H8	1.82	0.44
1:A:141:GLU:HA	1:A:144:LYS:HB2	1.98	0.44
1:A:165:SER:OG	1:A:165:SER:O	2.33	0.44
1:A:641:LEU:CD2	1:A:643:SER:CB	2.76	0.44
1:A:240:LEU:HD22	1:A:550:LYS:HB3	2.00	0.44
1:A:376:LYS:HB3	1:A:441:ILE:HB	2.00	0.44
1:A:577:LYS:HA	1:A:580:LYS:HE2	2.00	0.44
1:A:214:CYS:SG	1:A:218:GLU:HG3	2.58	0.43
1:A:626:THR:HG23	1:A:688:ARG:HD2	2.00	0.43
1:A:1314:ARG:HH21	1:A:1721:TYR:HA	1.83	0.43
1:A:1599:ARG:O	1:A:1603:LEU:N	2.45	0.43
1:A:219:LEU:O	1:A:223:ILE:HG12	2.18	0.43
1:A:371:LYS:HB2	1:A:371:LYS:HZ2	1.84	0.43
1:A:1336:PRO:O	1:A:1703:ARG:NH1	2.47	0.43
1:A:1692:TYR:HB2	1:A:1760:ALA:HA	2.01	0.43
1:A:45:ARG:O	1:A:49:VAL:N	2.42	0.43
1:A:253:ILE:HD12	1:A:561:ILE:HG12	2.00	0.43
1:A:338:GLU:HB3	1:A:341:HIS:HB2	2.00	0.43
1:A:949:ASP:OD1	1:A:950:VAL:N	2.48	0.43
1:A:133:TRP:O	1:A:163:TYR:OH	2.24	0.43
1:A:1873:THR:OG1	1:A:1879:ARG:NE	2.52	0.43
1:A:89:PHE:N	1:A:146:GLN:HE22	2.14	0.43
1:A:1330:TYR:HA	1:A:1601:LYS:HZ1	1.84	0.43
2:B:313:ASP:HB3	2:B:344:ARG:NH1	2.34	0.43
1:A:72:PHE:O	1:A:76:LEU:HG	2.19	0.43

Continued on next page...

Continued from previous page...

Atom-1	Atom-2	Interatomic distance (Å)	Clash overlap (Å)
1:A:698:CYS:O	1:A:702:LEU:HB2	2.19	0.43
1:A:866:GLU:H	1:A:1374:PHE:HE1	1.67	0.43
1:A:1689:HIS:N	1:A:1759:LYS:O	2.47	0.43
1:A:1748:LEU:HD23	1:A:1751:LYS:HD3	2.01	0.43
1:A:94:LYS:HE3	1:A:94:LYS:HB3	1.75	0.42
1:A:535:VAL:HG22	1:A:561:ILE:HB	2.01	0.42
1:A:952:THR:HG22	1:A:986:PRO:HB3	2.00	0.42
1:A:1845:PHE:HB3	1:A:1850:PRO:HG3	2.00	0.42
1:A:167:SER:HB2	1:A:169:ILE:HG12	2.01	0.42
1:A:1570:TYR:HD1	1:A:1570:TYR:HA	1.69	0.42
2:B:310:SER:OG	2:B:311:TYR:N	2.52	0.42
1:A:1061:LEU:HA	1:A:1064:LEU:HD12	2.00	0.42
1:A:1330:TYR:HB3	1:A:1588:LEU:HD13	2.02	0.42
3:C:3:A:N6	3:C:69:U:C4	2.87	0.42
1:A:259:PRO:HA	1:A:260:PHE:HA	1.65	0.42
1:A:1763:PRO:HA	1:A:1766:PHE:CD2	2.55	0.42
1:A:95:ARG:HG3	1:A:169:ILE:HA	2.02	0.42
1:A:283:ASP:O	2:B:324:GLN:NE2	2.51	0.42
1:A:294:ASP:HB3	1:A:295:SER:H	1.70	0.42
3:C:62:U:O4	3:C:63:A:N6	2.51	0.42
1:A:800:ARG:NH2	1:A:893:ASP:OD2	2.43	0.42
1:A:885:ASN:HA	1:A:888:SER:HA	2.01	0.42
1:A:990:VAL:HG23	1:A:1029:ASN:HA	2.00	0.42
1:A:1599:ARG:O	1:A:1602:ALA:N	2.52	0.42
1:A:57:ASP:OD1	1:A:58:HIS:ND1	2.44	0.42
1:A:1663:ILE:HA	1:A:1666:PHE:CG	2.54	0.42
3:C:2:G:H2'	3:C:3:A:C8	2.54	0.42
3:C:3:A:H2'	3:C:4:G:H8	1.82	0.42
1:A:372:PHE:HA	1:A:466:LYS:HB2	2.02	0.42
2:B:299:SER:O	2:B:302:SER:OG	2.29	0.42
1:A:81:LEU:HB3	1:A:171:LEU:HD23	2.01	0.42
1:A:916:LYS:HA	1:A:981:THR:HG21	2.02	0.42
1:A:924:LEU:HD12	1:A:927:TYR:HB2	2.02	0.42
1:A:1783:GLN:HA	1:A:1784:GLY:HA3	1.80	0.42
2:B:359:LEU:HD23	2:B:359:LEU:HA	1.82	0.42
1:A:203:LEU:HA	1:A:203:LEU:HD12	1.87	0.41
1:A:1584:CYS:SG	1:A:1589:LYS:N	2.90	0.41
1:A:571:SER:O	1:A:575:ASP:HB2	2.20	0.41
1:A:1294:PRO:HA	1:A:1296:LEU:HG	2.03	0.41
3:C:11:G:H2'	3:C:12:G:C8	2.55	0.41
1:A:239:ASP:HB3	1:A:240:LEU:H	1.52	0.41

Continued on next page...

Continued from previous page...

Atom-1	Atom-2	Interatomic distance (Å)	Clash overlap (Å)
1:A:832:LYS:HD2	1:A:832:LYS:HA	1.91	0.41
1:A:914:TYR:CD1	1:A:920:PHE:HA	2.55	0.41
1:A:1047:LEU:HA	1:A:1050:LYS:HE2	2.02	0.41
1:A:1677:PHE:HD2	1:A:1680:LYS:HG3	1.84	0.41
1:A:1715:LEU:HD11	1:A:1827:LEU:HB3	2.01	0.41
1:A:1850:PRO:O	1:A:1852:SER:N	2.53	0.41
1:A:849:LEU:O	1:A:853:ILE:HG12	2.21	0.41
1:A:1717:THR:O	1:A:1721:TYR:N	2.48	0.41
1:A:543:TYR:HB2	1:A:546:TYR:HD2	1.85	0.41
1:A:640:ARG:HG3	1:A:672:ASN:HD22	1.86	0.41
1:A:1599:ARG:HB3	1:A:1603:LEU:H	1.86	0.41
1:A:1852:SER:OG	1:A:1898:ARG:NH2	2.38	0.41
1:A:1873:THR:OG1	1:A:1879:ARG:HB3	2.21	0.41
3:C:58:A:H2'	3:C:59:A:C8	2.55	0.41
1:A:246:TYR:H	1:A:554:ARG:HH12	1.67	0.41
1:A:648:HIS:HD1	1:A:1689:HIS:HE2	1.69	0.41
1:A:692:ARG:HE	1:A:696:LEU:HD11	1.86	0.41
2:B:291:GLY:H	2:B:353:ARG:HD3	1.84	0.41
2:B:301:LEU:O	2:B:305:GLN:N	2.48	0.41
1:A:184:HIS:HA	1:A:185:PRO:HD3	1.89	0.41
1:A:988:LEU:HG	1:A:1035:PRO:HG3	2.02	0.41
1:A:145:HIS:CG	1:A:148:LEU:HD21	2.56	0.41
1:A:952:THR:HA	1:A:986:PRO:HB3	2.03	0.41
1:A:1715:LEU:HB3	1:A:1831:TRP:CE3	2.56	0.41
1:A:82:SER:O	1:A:86:ARG:N	2.54	0.41
1:A:339:GLU:HA	1:A:342:ARG:HG2	2.01	0.41
1:A:445:ILE:H	1:A:534:VAL:HG23	1.85	0.41
1:A:502:GLU:HA	1:A:505:LEU:HD12	2.02	0.41
1:A:770:LEU:N	1:A:833:LYS:O	2.38	0.41
1:A:1660:ASN:O	1:A:1664:SER:N	2.54	0.41
1:A:247:THR:HG21	1:A:557:ILE:HA	2.02	0.40
1:A:281:ILE:HD11	1:A:296:THR:HA	2.03	0.40
1:A:669:LEU:HA	1:A:669:LEU:HD23	1.94	0.40
1:A:707:GLU:HB3	1:A:1342:ARG:HH12	1.85	0.40
1:A:800:ARG:HA	1:A:882:ASN:HA	2.03	0.40
1:A:78:THR:HA	1:A:81:LEU:HG	2.03	0.40
1:A:298:ILE:HG13	1:A:492:LYS:HZ3	1.87	0.40
3:C:53:U:H2'	3:C:54:A:C8	2.56	0.40
1:A:87:GLY:H	1:A:94:LYS:HB2	1.86	0.40
1:A:286:ILE:HG21	1:A:340:LEU:HD23	2.03	0.40
1:A:791:LYS:HB3	1:A:793:TYR:CE2	2.57	0.40

Continued on next page...

Continued from previous page...

Atom-1	Atom-2	Interatomic distance (Å)	Clash overlap (Å)
1:A:935:ARG:NH2	1:A:1036:GLU:HG2	2.36	0.40
1:A:1742:ASN:OD1	1:A:1809:GLY:N	2.44	0.40
1:A:993:THR:HB	1:A:1048:TRP:HE1	1.85	0.40
1:A:1054:LEU:HD23	1:A:1057:ILE:HD12	2.03	0.40
1:A:1071:ARG:NE	1:A:1294:PRO:HB2	2.37	0.40
1:A:1298:LEU:HA	1:A:1301:LEU:HD12	2.03	0.40
1:A:1343:LEU:HB3	1:A:1706:PHE:CZ	2.56	0.40
1:A:162:GLY:HA3	1:A:163:TYR:HA	1.57	0.40
1:A:179:LEU:HB2	1:A:186:TYR:CE2	2.56	0.40
1:A:800:ARG:HA	1:A:881:LEU:O	2.21	0.40
1:A:804:ILE:HG23	1:A:806:THR:HG23	2.04	0.40
1:A:819:TYR:CG	1:A:1002:PRO:HA	2.56	0.40
1:A:1617:LEU:HD12	1:A:1617:LEU:HA	1.94	0.40

There are no symmetry-related clashes.

5.3 Torsion angles [i](#)

5.3.1 Protein backbone [i](#)

In the following table, the Percentiles column shows the percent Ramachandran outliers of the chain as a percentile score with respect to all PDB entries followed by that with respect to all EM entries.

The Analysed column shows the number of residues for which the backbone conformation was analysed, and the total number of residues.

Mol	Chain	Analysed	Favoured	Allowed	Outliers	Percentiles	
1	A	1296/1922 (67%)	1035 (80%)	252 (19%)	9 (1%)	22	62
2	B	73/366 (20%)	69 (94%)	4 (6%)	0	100	100
All	All	1369/2288 (60%)	1104 (81%)	256 (19%)	9 (1%)	26	62

All (9) Ramachandran outliers are listed below:

Mol	Chain	Res	Type
1	A	239	ASP
1	A	240	LEU
1	A	295	SER
1	A	238	THR
1	A	1593	VAL

Continued on next page...

Continued from previous page...

Mol	Chain	Res	Type
1	A	144	LYS
1	A	642	PRO
1	A	1592	PRO
1	A	529	PRO

5.3.2 Protein sidechains [i](#)

In the following table, the Percentiles column shows the percent sidechain outliers of the chain as a percentile score with respect to all PDB entries followed by that with respect to all EM entries.

The Analysed column shows the number of residues for which the sidechain conformation was analysed, and the total number of residues.

Mol	Chain	Analysed	Rotameric	Outliers	Percentiles	
1	A	1182/1730 (68%)	1169 (99%)	13 (1%)	73	84
2	B	60/301 (20%)	60 (100%)	0	100	100
All	All	1242/2031 (61%)	1229 (99%)	13 (1%)	77	86

All (13) residues with a non-rotameric sidechain are listed below:

Mol	Chain	Res	Type
1	A	86	ARG
1	A	91	ARG
1	A	209	ILE
1	A	230	LEU
1	A	240	LEU
1	A	287	SER
1	A	293	ARG
1	A	371	LYS
1	A	506	ARG
1	A	641	LEU
1	A	1588	LEU
1	A	1590	VAL
1	A	1765	LEU

Sometimes sidechains can be flipped to improve hydrogen bonding and reduce clashes. All (19) such sidechains are listed below:

Mol	Chain	Res	Type
1	A	65	ASN

Continued on next page...

Continued from previous page...

Mol	Chain	Res	Type
1	A	92	ASN
1	A	146	GLN
1	A	157	ASN
1	A	279	ASN
1	A	282	ASN
1	A	285	ASN
1	A	501	GLN
1	A	548	GLN
1	A	559	ASN
1	A	672	ASN
1	A	982	ASN
1	A	992	HIS
1	A	1355	ASN
1	A	1552	GLN
1	A	1661	HIS
1	A	1679	ASN
1	A	1695	ASN
2	B	324	GLN

5.3.3 RNA [i](#)

Mol	Chain	Analysed	Backbone Outliers	Pucker Outliers
3	C	42/73 (57%)	11 (26%)	0

All (11) RNA backbone outliers are listed below:

Mol	Chain	Res	Type
3	C	2	G
3	C	45	G
3	C	46	A
3	C	50	A
3	C	51	A
3	C	52	C
3	C	57	C
3	C	66	G
3	C	71	A
3	C	72	C
3	C	73	C

There are no RNA pucker outliers to report.

5.4 Non-standard residues in protein, DNA, RNA chains [i](#)

There are no non-standard protein/DNA/RNA residues in this entry.

5.5 Carbohydrates [i](#)

There are no monosaccharides in this entry.

5.6 Ligand geometry [i](#)

There are no ligands in this entry.

5.7 Other polymers [i](#)

There are no such residues in this entry.

5.8 Polymer linkage issues [i](#)

There are no chain breaks in this entry.

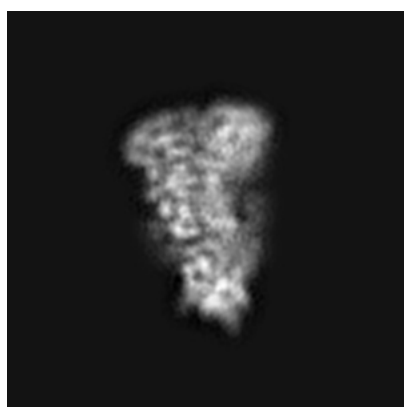
6 Map visualisation [i](#)

This section contains visualisations of the EMDB entry EMD-6906. These allow visual inspection of the internal detail of the map and identification of artifacts.

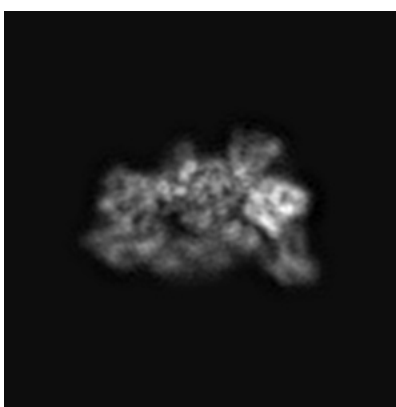
No raw map or half-maps were deposited for this entry and therefore no images, graphs, etc. pertaining to the raw map can be shown.

6.1 Orthogonal projections [i](#)

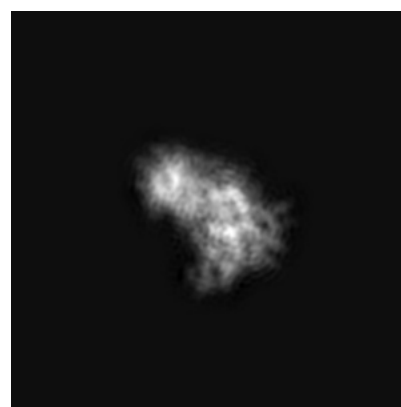
6.1.1 Primary map



X



Y

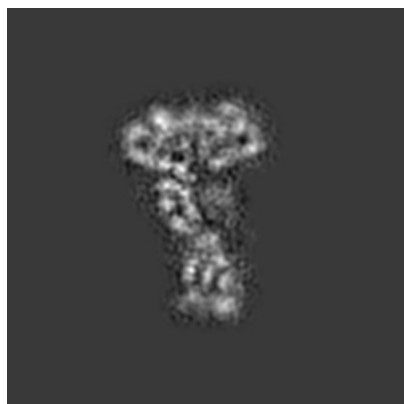


Z

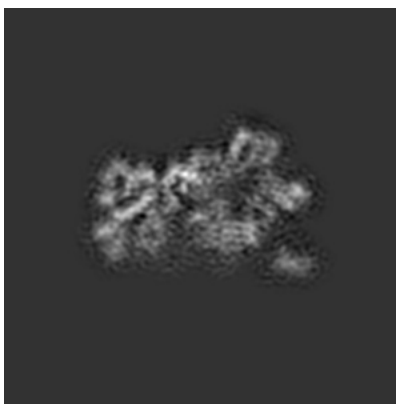
The images above show the map projected in three orthogonal directions.

6.2 Central slices [i](#)

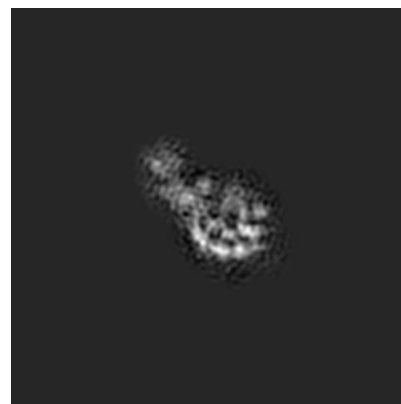
6.2.1 Primary map



X Index: 90



Y Index: 90



Z Index: 90

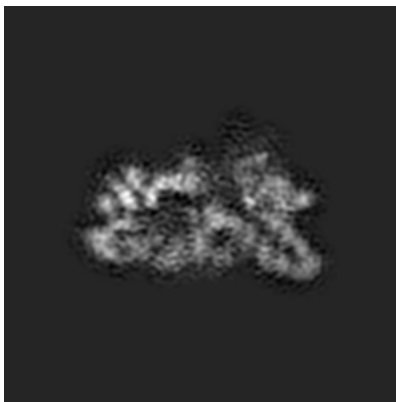
The images above show central slices of the map in three orthogonal directions.

6.3 Largest variance slices [i](#)

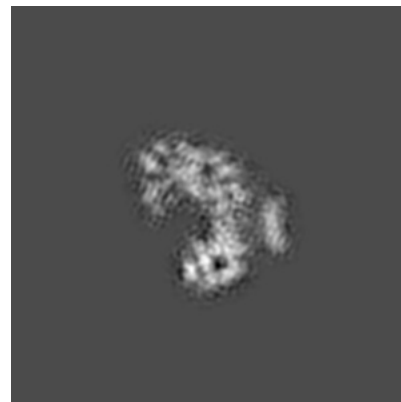
6.3.1 Primary map



X Index: 98



Y Index: 97



Z Index: 122

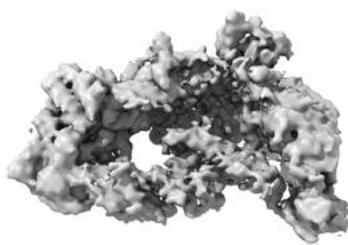
The images above show the largest variance slices of the map in three orthogonal directions.

6.4 Orthogonal surface views [i](#)

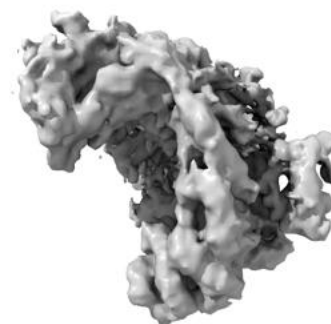
6.4.1 Primary map



X



Y



Z

The images above show the 3D surface view of the map at the recommended contour level 0.04. These images, in conjunction with the slice images, may facilitate assessment of whether an appropriate contour level has been provided.

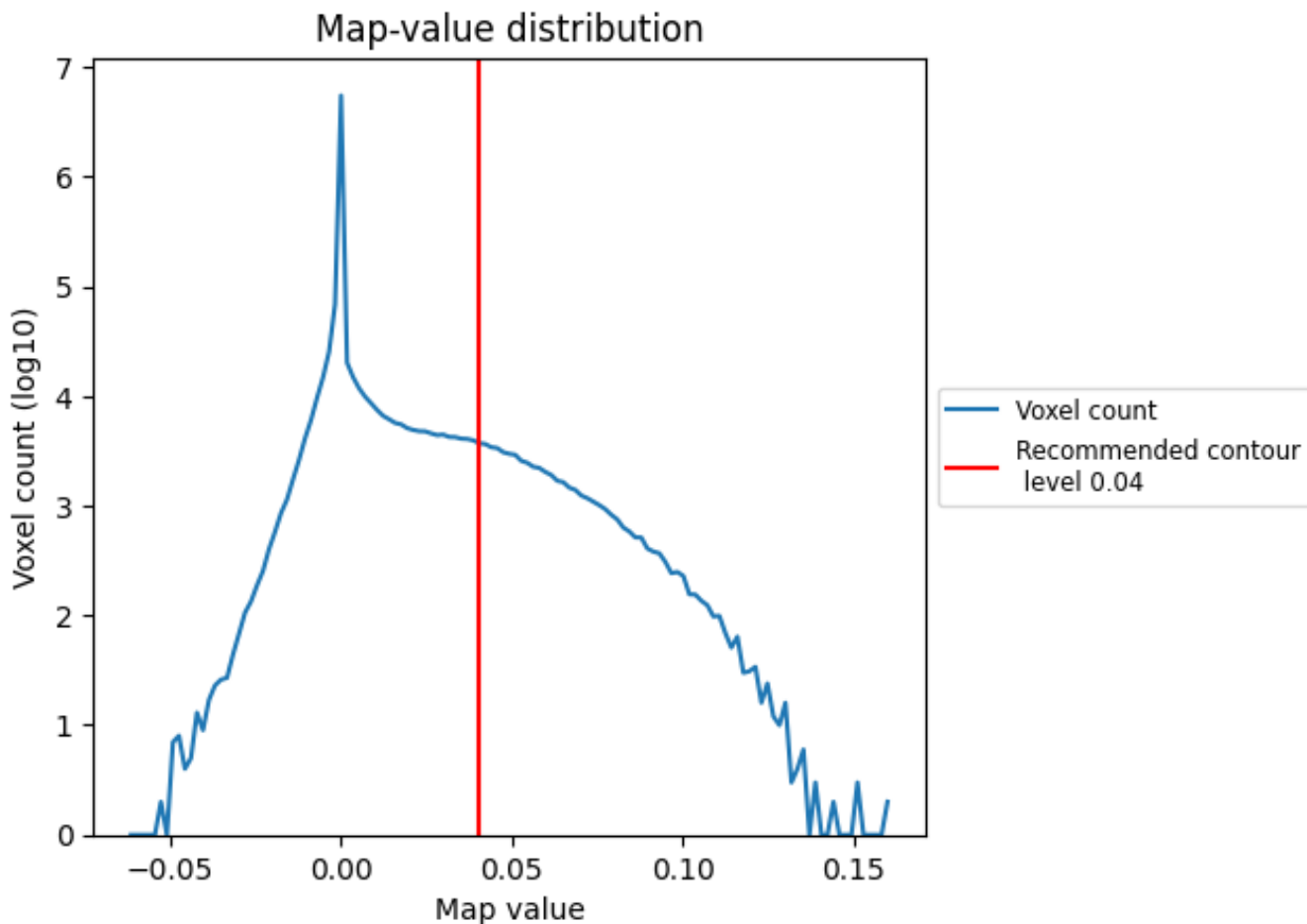
6.5 Mask visualisation

This section was not generated. No masks/segmentation were deposited.

7 Map analysis [i](#)

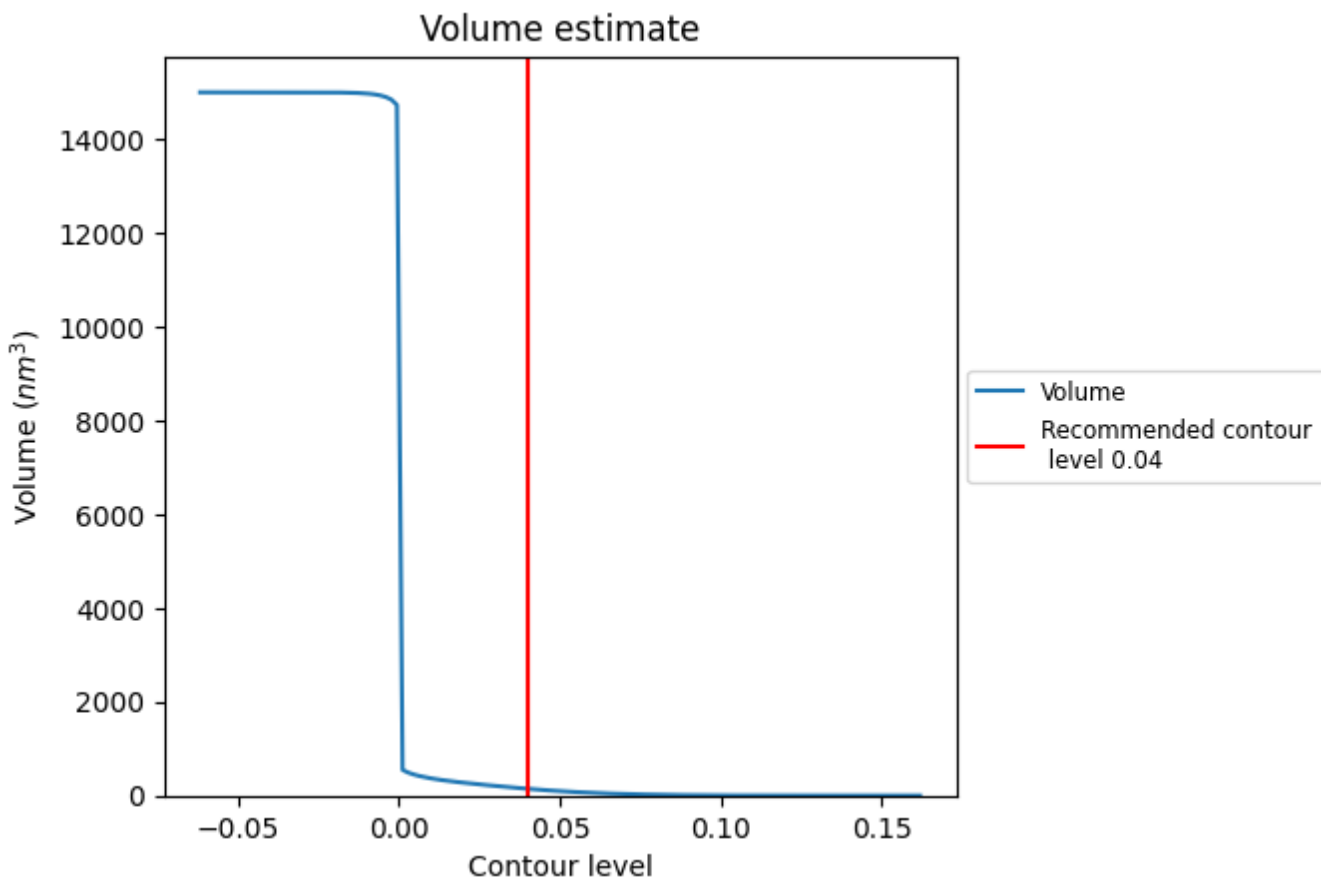
This section contains the results of statistical analysis of the map.

7.1 Map-value distribution [i](#)



The map-value distribution is plotted in 128 intervals along the x-axis. The y-axis is logarithmic. A spike in this graph at zero usually indicates that the volume has been masked.

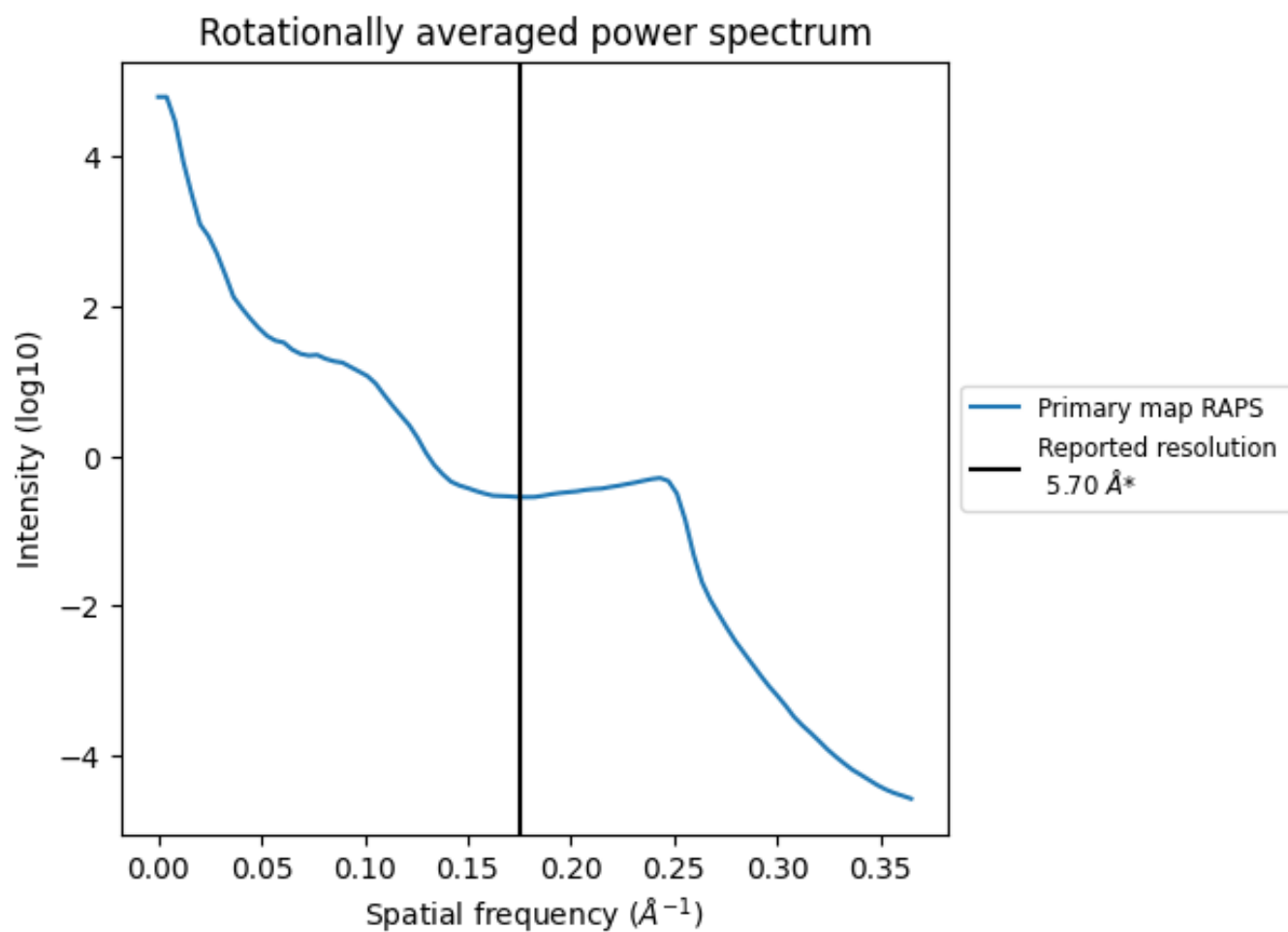
7.2 Volume estimate [i](#)



The volume at the recommended contour level is 145 nm³; this corresponds to an approximate mass of 131 kDa.

The volume estimate graph shows how the enclosed volume varies with the contour level. The recommended contour level is shown as a vertical line and the intersection between the line and the curve gives the volume of the enclosed surface at the given level.

7.3 Rotationally averaged power spectrum [\(i\)](#)



*Reported resolution corresponds to spatial frequency of 0.175\AA^{-1}

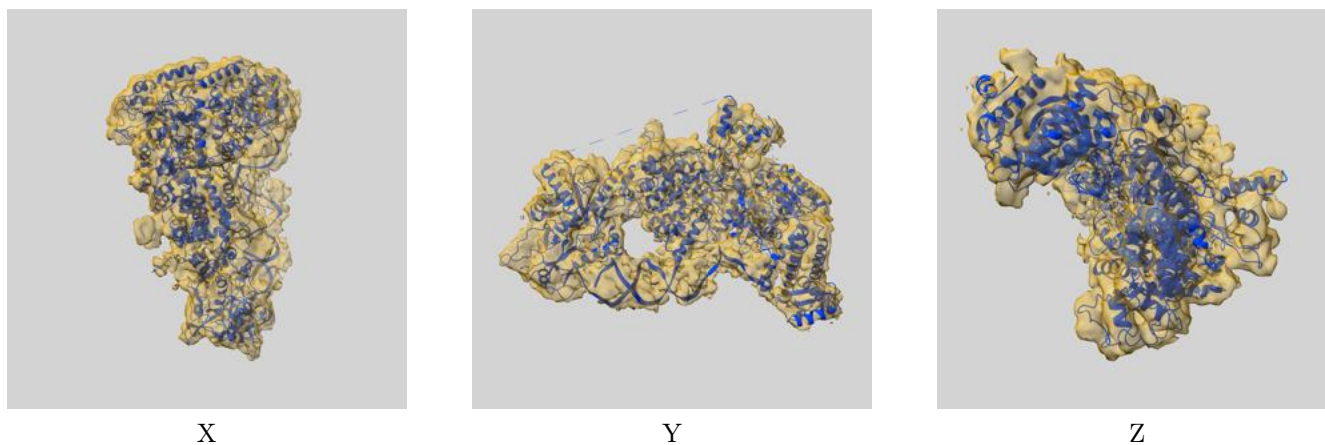
8 Fourier-Shell correlation

This section was not generated. No FSC curve or half-maps provided.

9 Map-model fit [i](#)

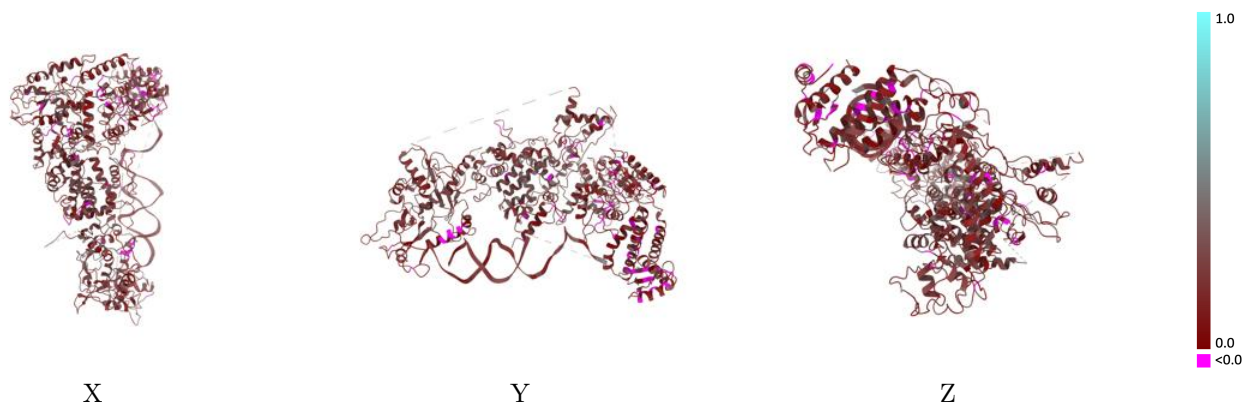
This section contains information regarding the fit between EMDB map EMD-6906 and PDB model 5ZAM. Per-residue inclusion information can be found in section [3](#) on page [4](#).

9.1 Map-model overlay [i](#)



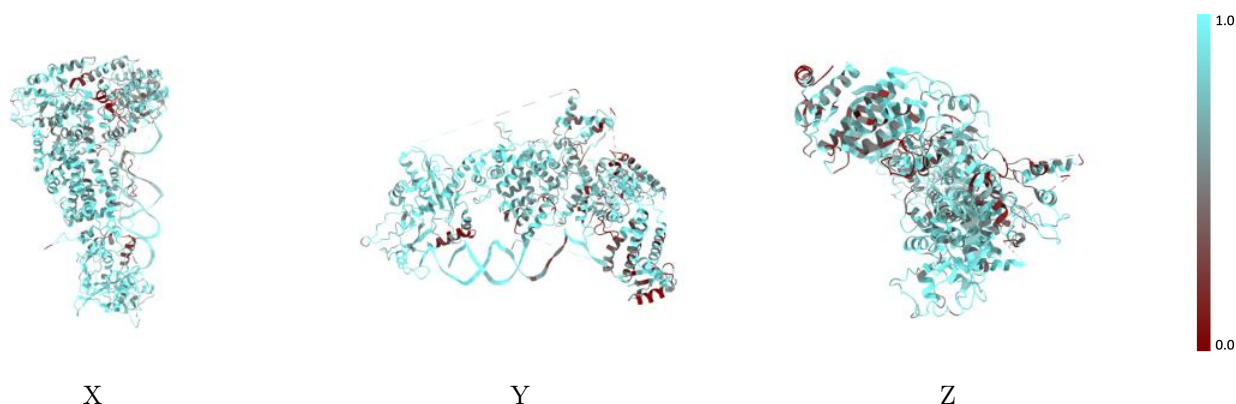
The images above show the 3D surface view of the map at the recommended contour level 0.04 at 50% transparency in yellow overlaid with a ribbon representation of the model coloured in blue. These images allow for the visual assessment of the quality of fit between the atomic model and the map.

9.2 Q-score mapped to coordinate model [\(i\)](#)



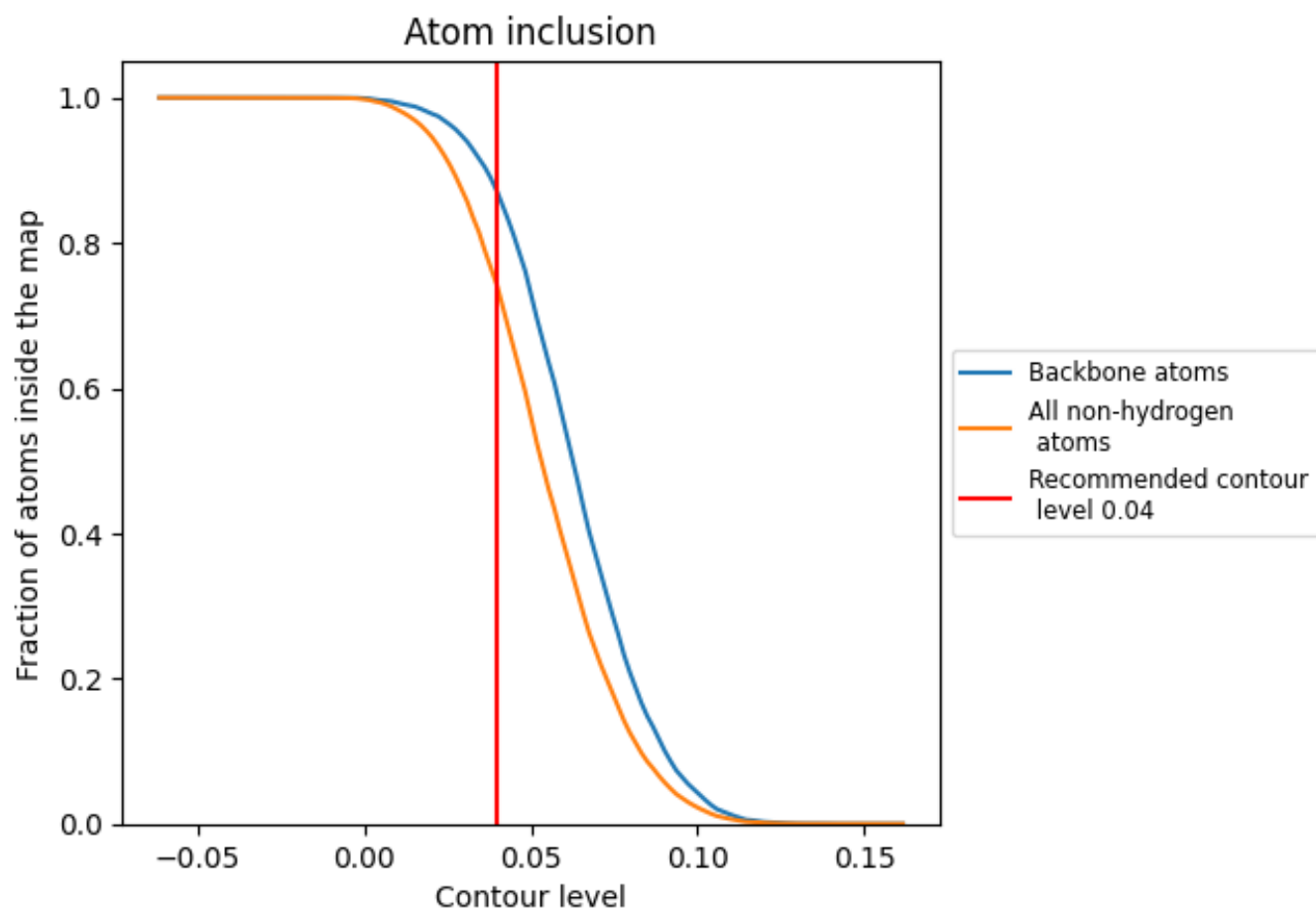
The images above show the model with each residue coloured according to its Q-score. This shows their resolvability in the map with higher Q-score values reflecting better resolvability. Please note: Q-score is calculating the resolvability of atoms, and thus high values are only expected at resolutions at which atoms can be resolved. Low Q-score values may therefore be expected for many entries.

9.3 Atom inclusion mapped to coordinate model [\(i\)](#)



The images above show the model with each residue coloured according to its atom inclusion. This shows to what extent they are inside the map at the recommended contour level (0.04).









9.4 Atom inclusion [i](#)



At the recommended contour level, 87% of all backbone atoms, 74% of all non-hydrogen atoms, are inside the map.

9.5 Map-model fit summary

The table lists the average atom inclusion at the recommended contour level (0.04) and Q-score for the entire model and for each chain.

Chain	Atom inclusion	Q-score
All	 0.7389	 0.2150
A	 0.7431	 0.2180
B	 0.5730	 0.1620
C	 0.7889	 0.2160

