



# Full wwPDB X-ray Structure Validation Report ⓘ

Oct 7, 2023 – 02:41 PM EDT

PDB ID : 6DHA  
Title : Crystal Structure of Human PPARgamma Ligand Binding Domain in Complex with Hydroxy Pioglitazone (M-IV)  
Authors : Shang, J.; Mosure, S.A.; Kojetin, D.J.  
Deposited on : 2018-05-18  
Resolution : 1.88 Å(reported)

This is a Full wwPDB X-ray Structure Validation Report for a publicly released PDB entry.

We welcome your comments at [validation@mail.wwpdb.org](mailto:validation@mail.wwpdb.org)

A user guide is available at

<https://www.wwpdb.org/validation/2017/XrayValidationReportHelp>

with specific help available everywhere you see the ⓘ symbol.

The types of validation reports are described at

<http://www.wwpdb.org/validation/2017/FAQs#types>.

---

The following versions of software and data (see [references ⓘ](#)) were used in the production of this report:

MolProbity : 4.02b-467  
Mogul : 1.8.5 (274361), CSD as541be (2020)  
Xtriage (Phenix) : 1.13  
EDS : 2.35.1  
buster-report : 1.1.7 (2018)  
Percentile statistics : 20191225.v01 (using entries in the PDB archive December 25th 2019)  
Refmac : 5.8.0158  
CCP4 : 7.0.044 (Gargrove)  
Ideal geometry (proteins) : Engh & Huber (2001)  
Ideal geometry (DNA, RNA) : Parkinson et al. (1996)  
Validation Pipeline (wwPDB-VP) : 2.35.1

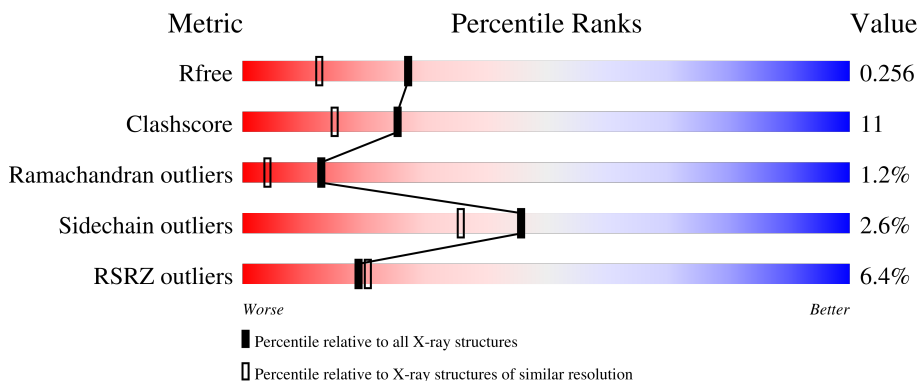
# 1 Overall quality at a glance

The following experimental techniques were used to determine the structure:

*X-RAY DIFFRACTION*

The reported resolution of this entry is 1.88 Å.

Percentile scores (ranging between 0-100) for global validation metrics of the entry are shown in the following graphic. The table shows the number of entries on which the scores are based.



Metric	Whole archive (#Entries)	Similar resolution (#Entries, resolution range(Å))
$R_{free}$	130704	9470 (1.90-1.86)
Clashscore	141614	10282 (1.90-1.86)
Ramachandran outliers	138981	10152 (1.90-1.86)
Sidechain outliers	138945	10152 (1.90-1.86)
RSRZ outliers	127900	9303 (1.90-1.86)

The table below summarises the geometric issues observed across the polymeric chains and their fit to the electron density. The red, orange, yellow and green segments of the lower bar indicate the fraction of residues that contain outliers for  $\geq 3$ , 2, 1 and 0 types of geometric quality criteria respectively. A grey segment represents the fraction of residues that are not modelled. The numeric value for each fraction is indicated below the corresponding segment, with a dot representing fractions  $\leq 5\%$ . The upper red bar (where present) indicates the fraction of residues that have poor fit to the electron density. The numeric value is given above the bar.

Mol	Chain	Length	Quality of chain
1	A	271	 3% 78% 15% 6%
1	B	271	 9% 77% 17% . .

The following table lists non-polymeric compounds, carbohydrate monomers and non-standard residues in protein, DNA, RNA chains that are outliers for geometric or electron-density-fit criteria:

Mol	Type	Chain	Res	Chirality	Geometry	Clashes	Electron density
3	KNA	A	502	-	-	X	-

## 2 Entry composition [i](#)

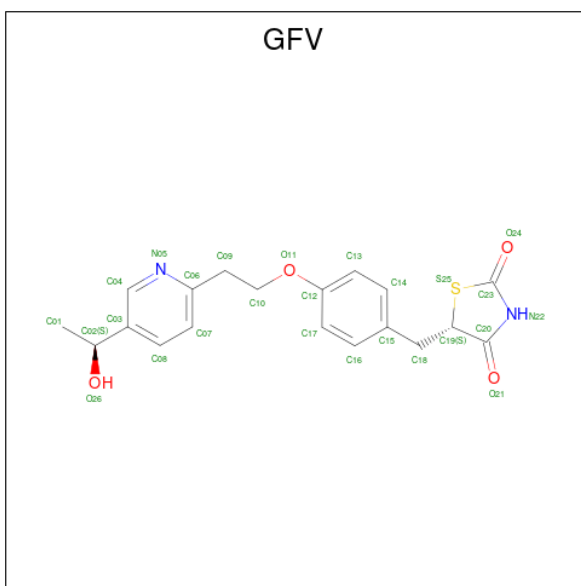
There are 4 unique types of molecules in this entry. The entry contains 4463 atoms, of which 0 are hydrogens and 0 are deuteriums.

In the tables below, the ZeroOcc column contains the number of atoms modelled with zero occupancy, the AltConf column contains the number of residues with at least one atom in alternate conformation and the Trace column contains the number of residues modelled with at most 2 atoms.

- Molecule 1 is a protein called Peroxisome proliferator-activated receptor gamma.

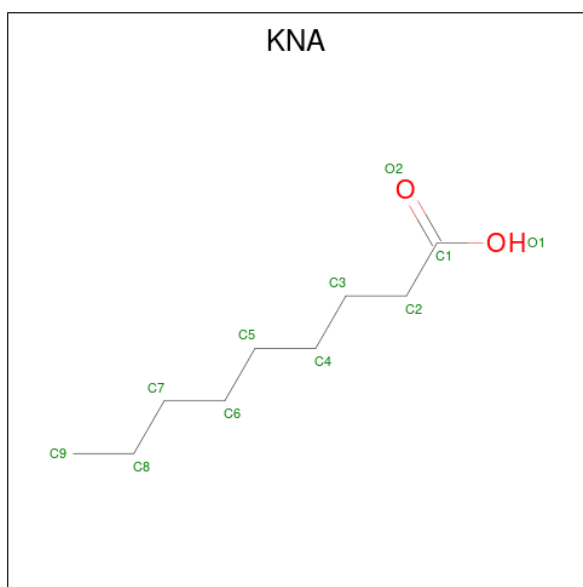
Mol	Chain	Residues	Atoms					ZeroOcc	AltConf	Trace
			Total	C	N	O	S			
1	A	255	Total 2037	C 1313	N 331	O 383	S 10	0	0	0
1	B	263	Total 2108	C 1362	N 344	O 392	S 10	0	0	0

- Molecule 2 is Hydroxy Pioglitazone (M-IV) (three-letter code: GFV) (formula: C<sub>19</sub>H<sub>20</sub>N<sub>2</sub>O<sub>4</sub>S).



Mol	Chain	Residues	Atoms					ZeroOcc	AltConf
			Total	C	N	O	S		
2	A	1	Total 26	C 19	N 2	O 4	S 1	0	0
2	B	1	Total 26	C 19	N 2	O 4	S 1	0	0

- Molecule 3 is nonanoic acid (three-letter code: KNA) (formula: C<sub>9</sub>H<sub>18</sub>O<sub>2</sub>).



Mol	Chain	Residues	Atoms	ZeroOcc	AltConf
3	A	1	Total C O 11 9 2	0	0
3	A	1	Total C O 11 9 2	0	0

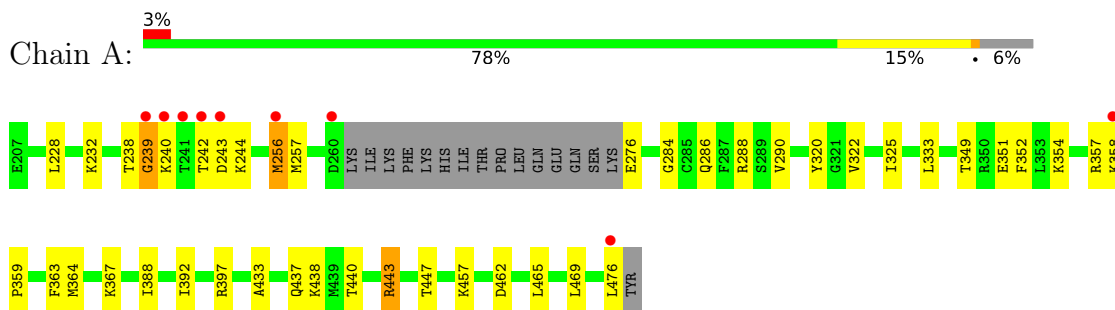
- Molecule 4 is water.

Mol	Chain	Residues	Atoms	ZeroOcc	AltConf
4	A	127	Total O 127 127	0	0
4	B	117	Total O 117 117	0	0

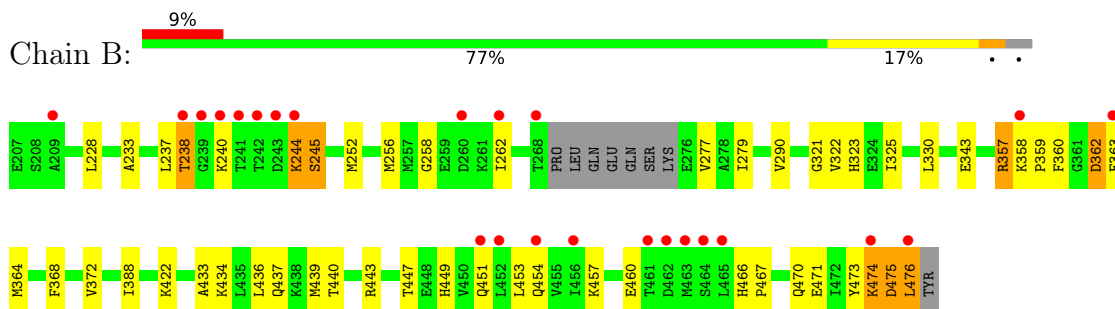
### 3 Residue-property plots

These plots are drawn for all protein, RNA, DNA and oligosaccharide chains in the entry. The first graphic for a chain summarises the proportions of the various outlier classes displayed in the second graphic. The second graphic shows the sequence view annotated by issues in geometry and electron density. Residues are color-coded according to the number of geometric quality criteria for which they contain at least one outlier: green = 0, yellow = 1, orange = 2 and red = 3 or more. A red dot above a residue indicates a poor fit to the electron density ( $RSRZ > 2$ ). Stretches of 2 or more consecutive residues without any outlier are shown as a green connector. Residues present in the sample, but not in the model, are shown in grey.

- Molecule 1: Peroxisome proliferator-activated receptor gamma



- Molecule 1: Peroxisome proliferator-activated receptor gamma



## 4 Data and refinement statistics

Property	Value	Source
Space group	C 1 2 1	Depositor
Cell constants a, b, c, $\alpha$ , $\beta$ , $\gamma$	93.08Å 61.85Å 119.67Å 90.00° 102.73° 90.00°	Depositor
Resolution (Å)	51.12 – 1.88 51.12 – 1.88	Depositor EDS
% Data completeness (in resolution range)	97.3 (51.12-1.88) 97.3 (51.12-1.88)	Depositor EDS
$R_{merge}$	0.06	Depositor
$R_{sym}$	(Not available)	Depositor
$\langle I/\sigma(I) \rangle$ <sup>1</sup>	1.20 (at 1.88Å)	Xtrriage
Refinement program	PHENIX 1.11.1_2575	Depositor
R, $R_{free}$	0.220 , 0.255 0.224 , 0.256	Depositor DCC
$R_{free}$ test set	1981 reflections (3.76%)	wwPDB-VP
Wilson B-factor (Å <sup>2</sup> )	34.2	Xtrriage
Anisotropy	0.111	Xtrriage
Bulk solvent $k_{sol}$ (e/Å <sup>3</sup> ), $B_{sol}$ (Å <sup>2</sup> )	0.34 , 44.9	EDS
L-test for twinning <sup>2</sup>	$\langle  L  \rangle = 0.48$ , $\langle L^2 \rangle = 0.32$	Xtrriage
Estimated twinning fraction	No twinning to report.	Xtrriage
$F_o, F_c$ correlation	0.95	EDS
Total number of atoms	4463	wwPDB-VP
Average B, all atoms (Å <sup>2</sup> )	46.0	wwPDB-VP

Xtrriage's analysis on translational NCS is as follows: *The largest off-origin peak in the Patterson function is 5.41% of the height of the origin peak. No significant pseudotranslation is detected.*

<sup>1</sup>Intensities estimated from amplitudes.

<sup>2</sup>Theoretical values of  $\langle |L| \rangle$ ,  $\langle L^2 \rangle$  for acentric reflections are 0.5, 0.333 respectively for untwinned datasets, and 0.375, 0.2 for perfectly twinned datasets.

## 5 Model quality [i](#)

### 5.1 Standard geometry [i](#)

Bond lengths and bond angles in the following residue types are not validated in this section: KNA, GFV

The Z score for a bond length (or angle) is the number of standard deviations the observed value is removed from the expected value. A bond length (or angle) with  $|Z| > 5$  is considered an outlier worth inspection. RMSZ is the root-mean-square of all Z scores of the bond lengths (or angles).

Mol	Chain	Bond lengths		Bond angles	
		RMSZ	# Z  >5	RMSZ	# Z  >5
1	A	0.40	0/2070	0.56	0/2790
1	B	0.38	0/2143	0.57	0/2886
All	All	0.39	0/4213	0.56	0/5676

There are no bond length outliers.

There are no bond angle outliers.

There are no chirality outliers.

There are no planarity outliers.

### 5.2 Too-close contacts [i](#)

In the following table, the Non-H and H(model) columns list the number of non-hydrogen atoms and hydrogen atoms in the chain respectively. The H(added) column lists the number of hydrogen atoms added and optimized by MolProbity. The Clashes column lists the number of clashes within the asymmetric unit, whereas Symm-Clashes lists symmetry-related clashes.

Mol	Chain	Non-H	H(model)	H(added)	Clashes	Symm-Clashes
1	A	2037	0	2089	35	0
1	B	2108	0	2173	52	0
2	A	26	0	0	1	0
2	B	26	0	0	0	0
3	A	22	0	34	10	0
4	A	127	0	0	8	0
4	B	117	0	0	7	0
All	All	4463	0	4296	90	0

The all-atom clashscore is defined as the number of clashes found per 1000 atoms (including hydrogen atoms). The all-atom clashscore for this structure is 11.



All (90) close contacts within the same asymmetric unit are listed below, sorted by their clash magnitude.

Atom-1	Atom-2	Interatomic distance (Å)	Clash overlap (Å)
1:B:357:ARG:NH1	1:B:359:PRO:HG2	1.68	1.08
1:B:357:ARG:HH12	1:B:359:PRO:HG2	1.08	1.07
1:B:357:ARG:NH2	1:B:360:PHE:HE2	1.72	0.86
1:A:239:GLY:O	1:A:242:THR:HG23	1.82	0.80
1:B:258:GLY:O	1:B:262:ILE:HG22	1.82	0.79
1:A:284:GLY:HA3	2:A:501:GFV:C01	2.16	0.76
1:A:357:ARG:HD2	1:A:359:PRO:HD2	1.69	0.75
1:B:357:ARG:NH1	1:B:359:PRO:CG	2.49	0.75
1:B:325:ILE:HG23	1:B:388:ILE:HD12	1.72	0.72
1:B:238:THR:HB	4:B:645:HOH:O	1.89	0.71
1:B:325:ILE:HD12	1:B:388:ILE:HG23	1.74	0.70
1:A:288:ARG:CZ	3:A:502:KNA:H4A	2.22	0.70
1:A:288:ARG:NH1	3:A:502:KNA:H4A	2.07	0.69
1:A:440:THR:HG21	1:B:443:ARG:HD2	1.74	0.69
1:B:357:ARG:HG2	1:B:359:PRO:HD2	1.77	0.67
1:A:232:LYS:NZ	4:A:606:HOH:O	2.27	0.67
1:B:363:PHE:HE1	1:B:449:HIS:HE1	1.41	0.65
1:B:252:MET:HE1	1:B:277:VAL:HG21	1.83	0.60
1:B:475:ASP:CG	1:B:476:LEU:HD23	2.22	0.59
1:A:357:ARG:CD	1:A:359:PRO:HD2	2.33	0.58
1:B:434:LYS:HG2	4:B:607:HOH:O	2.03	0.58
1:A:276:GLU:OE2	1:A:357:ARG:NH2	2.38	0.57
1:A:228:LEU:HD23	3:A:502:KNA:H2A	1.87	0.56
3:A:502:KNA:H7A	4:A:624:HOH:O	2.06	0.55
1:A:443:ARG:NH1	4:A:616:HOH:O	2.40	0.55
1:B:457:LYS:HD2	1:B:457:LYS:N	2.22	0.55
3:A:502:KNA:H2A	4:A:622:HOH:O	2.07	0.54
1:A:320:TYR:CE2	1:A:476:LEU:HD12	2.42	0.53
1:A:238:THR:O	1:A:240:LYS:N	2.41	0.53
1:B:466:HIS:N	1:B:467:PRO:HD3	2.23	0.53
1:A:349:THR:HG22	1:A:351:GLU:H	1.74	0.53
1:B:322:VAL:HG21	1:B:476:LEU:HD12	1.91	0.52
1:B:437:GLN:NE2	4:B:607:HOH:O	2.42	0.52
1:B:228:LEU:HD21	1:B:233:ALA:HB2	1.93	0.51
1:B:466:HIS:HB3	1:B:470:GLN:CG	2.41	0.51
1:B:343:GLU:O	1:B:343:GLU:HG3	2.11	0.50
1:A:397:ARG:HH11	1:A:443:ARG:NH2	2.08	0.50
1:A:349:THR:HG22	1:A:351:GLU:N	2.27	0.49
1:A:358:LYS:HB2	1:A:359:PRO:HD3	1.95	0.49
1:B:368:PHE:O	1:B:372:VAL:HG22	2.12	0.48

*Continued on next page...*

*Continued from previous page...*

Atom-1	Atom-2	Interatomic distance (Å)	Clash overlap (Å)
1:B:322:VAL:CG2	1:B:476:LEU:HD12	2.43	0.48
1:B:358:LYS:NZ	1:B:362:ASP:OD1	2.46	0.48
1:A:367:LYS:NZ	4:A:618:HOH:O	2.45	0.48
1:B:357:ARG:NH2	1:B:360:PHE:CE2	2.65	0.48
1:B:363:PHE:CE1	1:B:449:HIS:HE1	2.28	0.47
1:A:256:MET:C	1:A:256:MET:SD	2.93	0.47
1:B:357:ARG:NH1	1:B:359:PRO:CD	2.78	0.47
1:A:333:LEU:HD11	3:A:502:KNA:H8	1.97	0.47
1:A:433:ALA:O	1:A:437:GLN:HG3	2.14	0.47
1:B:451:GLN:O	1:B:454:GLN:HB3	2.13	0.47
1:B:323:HIS:HB2	4:B:615:HOH:O	2.14	0.47
1:B:228:LEU:CD2	1:B:233:ALA:HB2	2.44	0.46
1:A:325:ILE:HG23	1:A:388:ILE:HD12	1.97	0.46
1:B:357:ARG:HH11	1:B:359:PRO:HD2	1.81	0.46
1:B:422:LYS:HA	1:B:422:LYS:HD3	1.71	0.46
1:B:358:LYS:NZ	1:B:362:ASP:OD2	2.49	0.46
1:B:321:GLY:O	1:B:325:ILE:HG12	2.16	0.46
1:B:357:ARG:NH2	1:B:460:GLU:OE1	2.49	0.46
1:B:252:MET:O	1:B:256:MET:HG3	2.17	0.45
1:B:330:LEU:HD21	1:B:364:MET:HE1	1.99	0.44
1:A:325:ILE:HD11	1:A:392:ILE:CG1	2.48	0.44
1:B:474:LYS:HD2	1:B:474:LYS:H	1.82	0.44
1:B:471:GLU:O	1:B:474:LYS:NZ	2.45	0.44
1:A:290:VAL:HG22	1:A:469:LEU:HD13	2.00	0.44
1:A:256:MET:SD	1:A:257:MET:N	2.91	0.44
1:A:443:ARG:O	1:A:447:THR:HG23	2.18	0.43
1:B:434:LYS:HA	1:B:437:GLN:HE21	1.83	0.43
1:B:357:ARG:HH11	1:B:359:PRO:CD	2.31	0.43
3:A:502:KNA:C1	4:A:622:HOH:O	2.65	0.43
1:B:357:ARG:CG	1:B:359:PRO:HD2	2.46	0.43
1:A:363:PHE:CZ	1:A:364:MET:HG2	2.54	0.43
1:A:440:THR:OG1	1:B:440:THR:HG22	2.19	0.43
1:B:357:ARG:NH1	1:B:359:PRO:HD2	2.33	0.42
1:B:433:ALA:O	1:B:437:GLN:HG2	2.18	0.42
1:A:286:GLN:OE1	1:A:465:LEU:HD12	2.18	0.42
1:A:438:LYS:HD3	1:A:438:LYS:HA	1.87	0.42
3:A:503:KNA:H5	3:A:503:KNA:H8A	1.74	0.42
1:B:290:VAL:HG21	1:B:473:TYR:CE1	2.56	0.41
1:B:436:LEU:O	1:B:439:MET:HB2	2.19	0.41
1:A:228:LEU:CD2	3:A:502:KNA:H2A	2.50	0.41
1:A:462:ASP:OD2	4:A:601:HOH:O	2.22	0.41

*Continued on next page...*

Continued from previous page...

Atom-1	Atom-2	Interatomic distance (Å)	Clash overlap (Å)
1:B:244:LYS:HG3	4:B:619:HOH:O	2.20	0.41
1:A:349:THR:HG22	1:A:352:PHE:H	1.84	0.41
1:B:245:SER:HA	4:B:619:HOH:O	2.19	0.41
1:B:453:LEU:HA	1:B:453:LEU:HD12	1.85	0.41
1:A:238:THR:C	1:A:240:LYS:H	2.25	0.41
3:A:502:KNA:H8	3:A:502:KNA:H5	1.59	0.41
1:B:447:THR:HG23	4:B:658:HOH:O	2.21	0.41
1:A:357:ARG:NH1	4:A:621:HOH:O	2.52	0.40
1:B:279:ILE:H	1:B:279:ILE:HG13	1.67	0.40

There are no symmetry-related clashes.

## 5.3 Torsion angles [i](#)

### 5.3.1 Protein backbone [i](#)

In the following table, the Percentiles column shows the percent Ramachandran outliers of the chain as a percentile score with respect to all X-ray entries followed by that with respect to entries of similar resolution.

The Analysed column shows the number of residues for which the backbone conformation was analysed, and the total number of residues.

Mol	Chain	Analysed	Favoured	Allowed	Outliers	Percentiles
1	A	251/271 (93%)	245 (98%)	5 (2%)	1 (0%)	34 22
1	B	259/271 (96%)	246 (95%)	8 (3%)	5 (2%)	8 1
All	All	510/542 (94%)	491 (96%)	13 (2%)	6 (1%)	13 4

All (6) Ramachandran outliers are listed below:

Mol	Chain	Res	Type
1	A	239	GLY
1	B	237	LEU
1	B	244	LYS
1	B	475	ASP
1	B	240	LYS
1	B	238	THR

### 5.3.2 Protein sidechains [i](#)

In the following table, the Percentiles column shows the percent sidechain outliers of the chain as a percentile score with respect to all X-ray entries followed by that with respect to entries of similar resolution.

The Analysed column shows the number of residues for which the sidechain conformation was analysed, and the total number of residues.

Mol	Chain	Analysed	Rotameric	Outliers	Percentiles	
1	A	228/244 (93%)	221 (97%)	7 (3%)	40	29
1	B	236/244 (97%)	231 (98%)	5 (2%)	53	45
All	All	464/488 (95%)	452 (97%)	12 (3%)	46	36

All (12) residues with a non-rotameric sidechain are listed below:

Mol	Chain	Res	Type
1	A	243	ASP
1	A	244	LYS
1	A	256	MET
1	A	322	VAL
1	A	354	LYS
1	A	443	ARG
1	A	457	LYS
1	B	245	SER
1	B	357	ARG
1	B	362	ASP
1	B	474	LYS
1	B	476	LEU

Sometimes sidechains can be flipped to improve hydrogen bonding and reduce clashes. All (1) such sidechains are listed below:

Mol	Chain	Res	Type
1	B	470	GLN

### 5.3.3 RNA [i](#)

There are no RNA molecules in this entry.

## 5.4 Non-standard residues in protein, DNA, RNA chains [i](#)

There are no non-standard protein/DNA/RNA residues in this entry.

## 5.5 Carbohydrates [i](#)

There are no monosaccharides in this entry.

## 5.6 Ligand geometry [i](#)

4 ligands are modelled in this entry.

In the following table, the Counts columns list the number of bonds (or angles) for which Mogul statistics could be retrieved, the number of bonds (or angles) that are observed in the model and the number of bonds (or angles) that are defined in the Chemical Component Dictionary. The Link column lists molecule types, if any, to which the group is linked. The Z score for a bond length (or angle) is the number of standard deviations the observed value is removed from the expected value. A bond length (or angle) with  $|Z| > 2$  is considered an outlier worth inspection. RMSZ is the root-mean-square of all Z scores of the bond lengths (or angles).

Mol	Type	Chain	Res	Link	Bond lengths			Bond angles		
					Counts	RMSZ	# Z  > 2	Counts	RMSZ	# Z  > 2
3	KNA	A	502	-	10,10,10	0.47	0	10,10,10	1.53	3 (30%)
2	GFV	B	501	-	28,28,28	5.70	13 (46%)	36,38,38	4.52	11 (30%)
2	GFV	A	501	-	28,28,28	5.67	13 (46%)	36,38,38	4.85	11 (30%)
3	KNA	A	503	-	10,10,10	0.75	0	10,10,10	1.15	0

In the following table, the Chirals column lists the number of chiral outliers, the number of chiral centers analysed, the number of these observed in the model and the number defined in the Chemical Component Dictionary. Similar counts are reported in the Torsion and Rings columns. '-' means no outliers of that kind were identified.

Mol	Type	Chain	Res	Link	Chirals	Torsions	Rings
3	KNA	A	502	-	-	5/8/8/8	-
2	GFV	B	501	-	-	4/14/26/26	0/3/3/3
2	GFV	A	501	-	-	0/14/26/26	0/3/3/3
3	KNA	A	503	-	-	7/8/8/8	-

All (26) bond length outliers are listed below:

Mol	Chain	Res	Type	Atoms	Z	Observed(Å)	Ideal(Å)
2	A	501	GFV	C20-N22	20.78	1.64	1.37
2	B	501	GFV	C20-N22	20.75	1.64	1.37
2	A	501	GFV	C23-N22	11.90	1.51	1.36
2	B	501	GFV	C23-N22	11.78	1.51	1.36
2	B	501	GFV	C19-S25	-10.83	1.62	1.82
2	A	501	GFV	C19-S25	-10.64	1.62	1.82

*Continued on next page...*

*Continued from previous page...*

Mol	Chain	Res	Type	Atoms	Z	Observed(Å)	Ideal(Å)
2	A	501	GFV	C23-S25	-7.59	1.70	1.76
2	B	501	GFV	C19-C20	7.48	1.57	1.52
2	B	501	GFV	C23-S25	-7.46	1.70	1.76
2	A	501	GFV	C19-C20	7.02	1.57	1.52
2	B	501	GFV	O24-C23	-5.64	1.13	1.22
2	A	501	GFV	O24-C23	-5.58	1.13	1.22
2	B	501	GFV	C04-C03	4.84	1.46	1.39
2	A	501	GFV	C04-C03	4.72	1.45	1.39
2	B	501	GFV	C09-C10	4.13	1.64	1.50
2	A	501	GFV	C09-C10	4.02	1.64	1.50
2	B	501	GFV	O11-C12	3.13	1.44	1.37
2	A	501	GFV	O11-C12	3.11	1.44	1.37
2	B	501	GFV	C18-C15	2.52	1.57	1.51
2	A	501	GFV	C08-C07	2.42	1.43	1.38
2	B	501	GFV	C08-C07	2.36	1.43	1.38
2	A	501	GFV	C18-C15	2.34	1.56	1.51
2	B	501	GFV	O21-C20	-2.18	1.19	1.23
2	A	501	GFV	O21-C20	-2.18	1.19	1.23
2	A	501	GFV	O11-C10	-2.18	1.36	1.43
2	B	501	GFV	O11-C10	-2.15	1.36	1.43

All (25) bond angle outliers are listed below:

Mol	Chain	Res	Type	Atoms	Z	Observed(°)	Ideal(°)
2	A	501	GFV	C19-S25-C23	23.67	105.59	92.86
2	B	501	GFV	C19-S25-C23	19.85	103.53	92.86
2	B	501	GFV	C20-N22-C23	-15.29	107.90	118.24
2	A	501	GFV	C20-N22-C23	-13.64	109.02	118.24
2	B	501	GFV	S25-C23-N22	-5.42	106.59	110.40
2	A	501	GFV	S25-C23-N22	-4.16	107.48	110.40
2	B	501	GFV	C19-C20-N22	-3.88	108.64	112.01
2	A	501	GFV	C03-C04-N05	-3.46	120.21	124.63
2	A	501	GFV	C19-C20-N22	-3.41	109.05	112.01
2	B	501	GFV	C03-C04-N05	-3.16	120.59	124.63
2	A	501	GFV	C15-C18-C19	-3.08	108.91	113.32
2	A	501	GFV	C04-N05-C06	2.98	121.64	117.82
2	B	501	GFV	C07-C08-C03	-2.90	118.28	121.20
3	A	502	KNA	O1-C1-C2	2.86	123.20	114.03
2	B	501	GFV	C04-N05-C06	2.70	121.28	117.82
2	A	501	GFV	C07-C08-C03	-2.68	118.50	121.20
2	B	501	GFV	O21-C20-C19	2.66	125.88	123.11
2	A	501	GFV	C08-C03-C04	2.62	119.67	116.88

*Continued on next page...*

Continued from previous page...

Mol	Chain	Res	Type	Atoms	Z	Observed(°)	Ideal(°)
2	B	501	GFV	C08-C03-C04	2.50	119.54	116.88
2	B	501	GFV	O24-C23-S25	2.47	126.94	124.62
2	A	501	GFV	C18-C19-S25	-2.28	110.68	113.04
2	A	501	GFV	O21-C20-C19	2.27	125.48	123.11
3	A	502	KNA	C3-C2-C1	-2.07	109.25	114.47
3	A	502	KNA	O2-C1-C2	-2.07	116.44	123.08
2	B	501	GFV	C18-C19-C20	-2.00	108.28	111.21

There are no chirality outliers.

All (16) torsion outliers are listed below:

Mol	Chain	Res	Type	Atoms
3	A	503	KNA	C1-C2-C3-C4
3	A	502	KNA	C1-C2-C3-C4
3	A	502	KNA	C4-C5-C6-C7
3	A	503	KNA	C2-C3-C4-C5
3	A	502	KNA	C5-C6-C7-C8
2	B	501	GFV	C17-C12-O11-C10
2	B	501	GFV	C13-C12-O11-C10
3	A	503	KNA	C4-C5-C6-C7
2	B	501	GFV	C09-C10-O11-C12
3	A	502	KNA	C6-C7-C8-C9
3	A	503	KNA	C5-C6-C7-C8
2	B	501	GFV	C06-C09-C10-O11
3	A	502	KNA	C3-C4-C5-C6
3	A	503	KNA	C3-C4-C5-C6
3	A	503	KNA	O2-C1-C2-C3
3	A	503	KNA	O1-C1-C2-C3

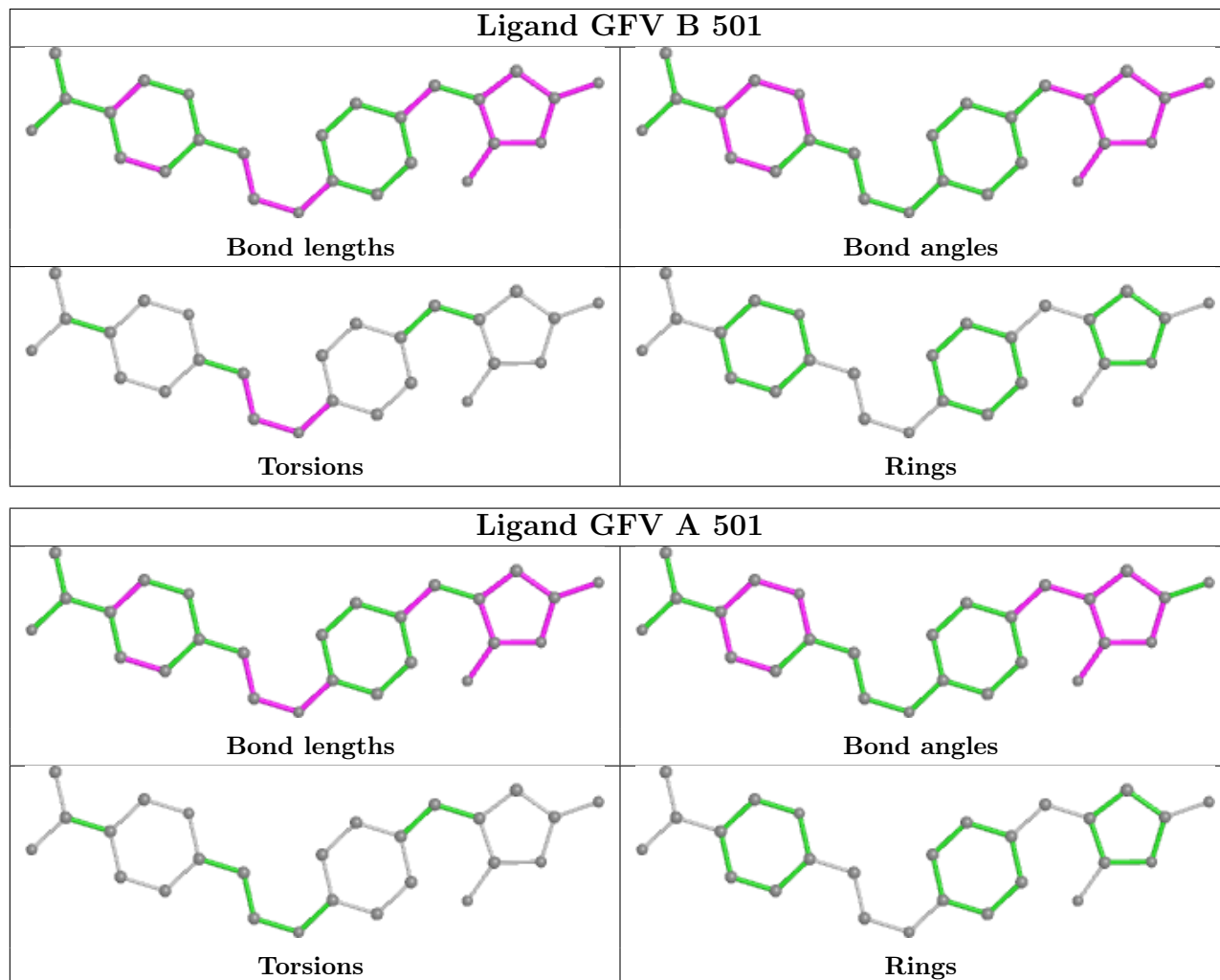
There are no ring outliers.

3 monomers are involved in 11 short contacts:

Mol	Chain	Res	Type	Clashes	Symm-Clashes
3	A	502	KNA	9	0
2	A	501	GFV	1	0
3	A	503	KNA	1	0

The following is a two-dimensional graphical depiction of Mogul quality analysis of bond lengths, bond angles, torsion angles, and ring geometry for all instances of the Ligand of Interest. In addition, ligands with molecular weight > 250 and outliers as shown on the validation Tables will also be included. For torsion angles, if less than 5% of the Mogul distribution of torsion angles is within 10 degrees of the torsion angle in question, then that torsion angle is considered an outlier.

Any bond that is central to one or more torsion angles identified as an outlier by Mogul will be highlighted in the graph. For rings, the root-mean-square deviation (RMSD) between the ring in question and similar rings identified by Mogul is calculated over all ring torsion angles. If the average RMSD is greater than 60 degrees and the minimal RMSD between the ring in question and any Mogul-identified rings is also greater than 60 degrees, then that ring is considered an outlier. The outliers are highlighted in purple. The color gray indicates Mogul did not find sufficient equivalents in the CSD to analyse the geometry.



## 5.7 Other polymers [i](#)

There are no such residues in this entry.

## 5.8 Polymer linkage issues [i](#)

There are no chain breaks in this entry.



## 6 Fit of model and data

### 6.1 Protein, DNA and RNA chains

In the following table, the column labelled ‘#RSRZ > 2’ contains the number (and percentage) of RSRZ outliers, followed by percent RSRZ outliers for the chain as percentile scores relative to all X-ray entries and entries of similar resolution. The OWAB column contains the minimum, median, 95<sup>th</sup> percentile and maximum values of the occupancy-weighted average B-factor per residue. The column labelled ‘Q < 0.9’ lists the number of (and percentage) of residues with an average occupancy less than 0.9.

Mol	Chain	Analysed	<RSRZ>	#RSRZ>2	OWAB(Å <sup>2</sup> )	Q<0.9
1	A	255/271 (94%)	0.09	9 (3%) 44 45	24, 39, 77, 105	0
1	B	263/271 (97%)	0.56	24 (9%) 9 10	24, 41, 94, 133	0
All	All	518/542 (95%)	0.33	33 (6%) 19 20	24, 40, 89, 133	0

All (33) RSRZ outliers are listed below:

Mol	Chain	Res	Type	RSRZ
1	B	465	LEU	13.1
1	B	476	LEU	12.3
1	B	238	THR	9.8
1	B	464	SER	9.3
1	B	242	THR	8.2
1	A	241	THR	6.9
1	A	240	LYS	6.2
1	B	243	ASP	6.1
1	B	461	THR	5.8
1	B	244	LYS	5.2
1	B	240	LYS	4.9
1	B	241	THR	4.8
1	B	456	ILE	4.6
1	B	463	MET	4.5
1	B	462	ASP	4.5
1	B	239	GLY	3.5
1	B	452	LEU	3.4
1	A	476	LEU	3.3
1	A	243	ASP	3.1
1	B	358	LYS	2.9
1	A	242	THR	2.8
1	A	239	GLY	2.7
1	B	262	ILE	2.6
1	B	474	LYS	2.6

*Continued on next page...*

*Continued from previous page...*

Mol	Chain	Res	Type	RSRZ
1	B	363	PHE	2.5
1	B	454	GLN	2.4
1	B	268	THR	2.4
1	B	209	ALA	2.4
1	A	260	ASP	2.4
1	A	256	MET	2.2
1	B	260	ASP	2.2
1	B	451	GLN	2.0
1	A	358	LYS	2.0

## 6.2 Non-standard residues in protein, DNA, RNA chains [\(i\)](#)

There are no non-standard protein/DNA/RNA residues in this entry.

## 6.3 Carbohydrates [\(i\)](#)

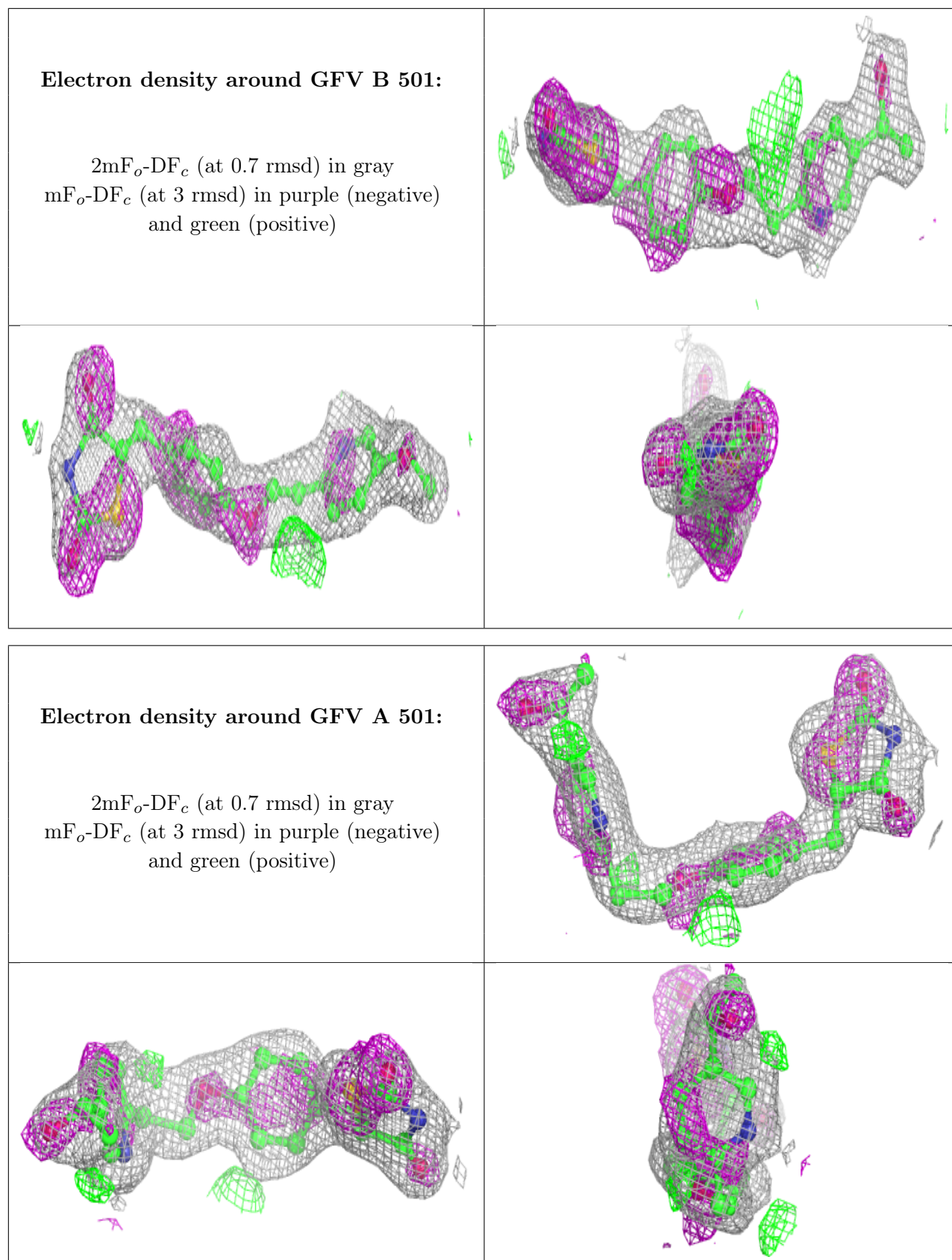
There are no monosaccharides in this entry.

## 6.4 Ligands [\(i\)](#)

In the following table, the Atoms column lists the number of modelled atoms in the group and the number defined in the chemical component dictionary. The B-factors column lists the minimum, median, 95<sup>th</sup> percentile and maximum values of B factors of atoms in the group. The column labelled 'Q< 0.9' lists the number of atoms with occupancy less than 0.9.

Mol	Type	Chain	Res	Atoms	RSCC	RSR	B-factors( $\text{\AA}^2$ )	Q<0.9
3	KNA	A	503	11/11	0.74	0.16	62,65,75,77	0
3	KNA	A	502	11/11	0.77	0.33	39,51,69,75	0
2	GFV	B	501	26/26	0.80	0.26	30,30,30,30	0
2	GFV	A	501	26/26	0.89	0.20	30,30,30,30	0

The following is a graphical depiction of the model fit to experimental electron density of all instances of the Ligand of Interest. In addition, ligands with molecular weight > 250 and outliers as shown on the geometry validation Tables will also be included. Each fit is shown from different orientation to approximate a three-dimensional view.



## 6.5 Other polymers [i](#)

There are no such residues in this entry.