



wwPDB X-ray Structure Validation Summary Report ⓘ

Jun 22, 2024 – 05:03 PM EDT

PDB ID : 6ELG
Title : Tryptophan Repressor TrpR from E.coli variant M42F T44L T81I S88Y with Indole-3-acetonitrile
Authors : Stiel, A.C.; Shanmugaratnam, S.; Herud-Sikimic, O.; Juergens, G.; Hocker, B.
Deposited on : 2017-09-28
Resolution : 1.38 Å (reported)

This is a wwPDB X-ray Structure Validation Summary Report for a publicly released PDB entry.

We welcome your comments at validation@mail.wwpdb.org

A user guide is available at

<https://www.wwpdb.org/validation/2017/XrayValidationReportHelp>

with specific help available everywhere you see the ⓘ symbol.

The types of validation reports are described at

<http://www.wwpdb.org/validation/2017/FAQs#types>.

The following versions of software and data (see [references ⓘ](#)) were used in the production of this report:

MolProbity : 4.02b-467
Mogul : 2022.3.0, CSD as543be (2022)
Xtriage (Phenix) : 1.20.1
EDS : 2.37.1
Percentile statistics : 20191225.v01 (using entries in the PDB archive December 25th 2019)
Refmac : 5.8.0158
CCP4 : 7.0.044 (Gargrove)
Ideal geometry (proteins) : Engh & Huber (2001)
Ideal geometry (DNA, RNA) : Parkinson et al. (1996)
Validation Pipeline (wwPDB-VP) : 2.37.1

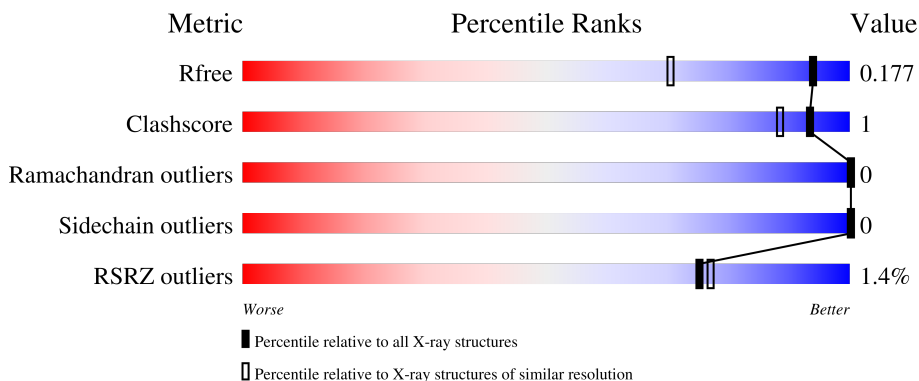
1 Overall quality at a glance

The following experimental techniques were used to determine the structure:

X-RAY DIFFRACTION


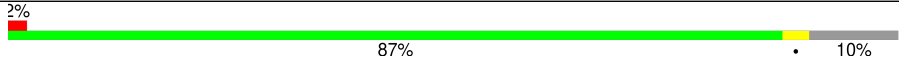
The reported resolution of this entry is 1.38 Å.

Percentile scores (ranging between 0-100) for global validation metrics of the entry are shown in the following graphic. The table shows the number of entries on which the scores are based.



Metric	Whole archive (#Entries)	Similar resolution (#Entries, resolution range(Å))
R_{free}	130704	2907 (1.40-1.36)
Clashscore	141614	3037 (1.40-1.36)
Ramachandran outliers	138981	2970 (1.40-1.36)
Sidechain outliers	138945	2969 (1.40-1.36)
RSRZ outliers	127900	2846 (1.40-1.36)

The table below summarises the geometric issues observed across the polymeric chains and their fit to the electron density. The red, orange, yellow and green segments of the lower bar indicate the fraction of residues that contain outliers for ≥ 3 , 2, 1 and 0 types of geometric quality criteria respectively. A grey segment represents the fraction of residues that are not modelled. The numeric value for each fraction is indicated below the corresponding segment, with a dot representing fractions $\leq 5\%$. The upper red bar (where present) indicates the fraction of residues that have poor fit to the electron density. The numeric value is given above the bar.

Mol	Chain	Length	Quality of chain
1	A	116	
1	B	116	

2 Entry composition [i](#)

There are 3 unique types of molecules in this entry. The entry contains 4051 atoms, of which 1859 are hydrogens and 0 are deuteriums.

In the tables below, the ZeroOcc column contains the number of atoms modelled with zero occupancy, the AltConf column contains the number of residues with at least one atom in alternate conformation and the Trace column contains the number of residues modelled with at most 2 atoms.

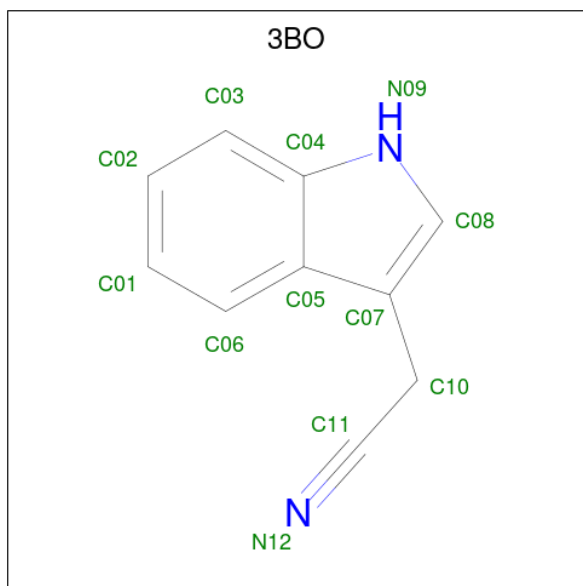
- Molecule 1 is a protein called Trp operon repressor.

Mol	Chain	Residues	Atoms					ZeroOcc	AltConf	Trace	
			Total	C	H	N	O				S
1	A	105	1808	566	917	160	163	2	0	10	0
1	B	104	1825	571	926	160	165	3	0	13	0

There are 24 discrepancies between the modelled and reference sequences:

Chain	Residue	Modelled	Actual	Comment	Reference
A	42	PHE	MET	engineered mutation	UNP P0A881
A	44	LEU	THR	engineered mutation	UNP P0A881
A	81	ILE	THR	engineered mutation	UNP P0A881
A	88	TYR	SER	engineered mutation	UNP P0A881
A	109	LEU	-	expression tag	UNP P0A881
A	110	GLU	-	expression tag	UNP P0A881
A	111	HIS	-	expression tag	UNP P0A881
A	112	HIS	-	expression tag	UNP P0A881
A	113	HIS	-	expression tag	UNP P0A881
A	114	HIS	-	expression tag	UNP P0A881
A	115	HIS	-	expression tag	UNP P0A881
A	116	HIS	-	expression tag	UNP P0A881
B	42	PHE	MET	engineered mutation	UNP P0A881
B	44	LEU	THR	engineered mutation	UNP P0A881
B	81	ILE	THR	engineered mutation	UNP P0A881
B	88	TYR	SER	engineered mutation	UNP P0A881
B	109	LEU	-	expression tag	UNP P0A881
B	110	GLU	-	expression tag	UNP P0A881
B	111	HIS	-	expression tag	UNP P0A881
B	112	HIS	-	expression tag	UNP P0A881
B	113	HIS	-	expression tag	UNP P0A881
B	114	HIS	-	expression tag	UNP P0A881
B	115	HIS	-	expression tag	UNP P0A881
B	116	HIS	-	expression tag	UNP P0A881

- Molecule 2 is 1H-indol-3-ylacetonitrile (three-letter code: 3BO) (formula: C₁₀H₈N₂).



Mol	Chain	Residues	Atoms				ZeroOcc	AltConf
			Total	C	H	N		
2	A	1	20	10	8	2	0	0
2	B	1	20	10	8	2	0	0

- Molecule 3 is water.

Mol	Chain	Residues	Atoms		ZeroOcc	AltConf
			Total	O		
3	A	190	190	190	0	0
3	B	188	188	188	0	0

4 Data and refinement statistics

Property	Value	Source
Space group	P 21 21 21	Depositor
Cell constants a, b, c, α , β , γ	55.01Å 63.47Å 65.36Å 90.00° 90.00° 90.00°	Depositor
Resolution (Å)	42.09 – 1.38 42.09 – 1.38	Depositor EDS
% Data completeness (in resolution range)	99.5 (42.09-1.38) 99.6 (42.09-1.38)	Depositor EDS
R_{merge}	0.06	Depositor
R_{sym}	(Not available)	Depositor
$\langle I/\sigma(I) \rangle$ ¹	1.07 (at 1.38Å)	Xtrriage
Refinement program	PHENIX	Depositor
R, R_{free}	0.143 , 0.176 0.144 , 0.177	Depositor DCC
R_{free} test set	2396 reflections (5.00%)	wwPDB-VP
Wilson B-factor (Å ²)	13.4	Xtrriage
Anisotropy	0.132	Xtrriage
Bulk solvent k_{sol} (e/Å ³), B_{sol} (Å ²)	0.36 , 39.6	EDS
L-test for twinning ²	$\langle L \rangle = 0.49$, $\langle L^2 \rangle = 0.32$	Xtrriage
Estimated twinning fraction	0.018 for -h,l,k	Xtrriage
F_o, F_c correlation	0.98	EDS
Total number of atoms	4051	wwPDB-VP
Average B, all atoms (Å ²)	19.0	wwPDB-VP

Xtrriage's analysis on translational NCS is as follows: *The analyses of the Patterson function reveals a significant off-origin peak that is 23.09 % of the origin peak, indicating pseudo-translational symmetry. The chance of finding a peak of this or larger height randomly in a structure without pseudo-translational symmetry is equal to 4.9955e-03. The detected translational NCS is most likely also responsible for the elevated intensity ratio.*

¹Intensities estimated from amplitudes.

²Theoretical values of $\langle |L| \rangle$, $\langle L^2 \rangle$ for acentric reflections are 0.5, 0.333 respectively for untwinned datasets, and 0.375, 0.2 for perfectly twinned datasets.

5 Model quality

5.1 Standard geometry

Bond lengths and bond angles in the following residue types are not validated in this section: 3BO

The Z score for a bond length (or angle) is the number of standard deviations the observed value is removed from the expected value. A bond length (or angle) with $|Z| > 5$ is considered an outlier worth inspection. RMSZ is the root-mean-square of all Z scores of the bond lengths (or angles).

Mol	Chain	Bond lengths		Bond angles	
		RMSZ	# Z >5	RMSZ	# Z >5
1	A	0.47	0/950	0.64	0/1284
1	B	0.48	0/964	0.61	0/1302
All	All	0.47	0/1914	0.63	0/2586

There are no bond length outliers.

There are no bond angle outliers.

There are no chirality outliers.

There are no planarity outliers.

5.2 Too-close contacts

In the following table, the Non-H and H(model) columns list the number of non-hydrogen atoms and hydrogen atoms in the chain respectively. The H(added) column lists the number of hydrogen atoms added and optimized by MolProbity. The Clashes column lists the number of clashes within the asymmetric unit, whereas Symm-Clashes lists symmetry-related clashes.

Mol	Chain	Non-H	H(model)	H(added)	Clashes	Symm-Clashes
1	A	891	917	867	3	0
1	B	899	926	877	2	0
2	A	12	8	0	0	0
2	B	12	8	0	0	0
3	A	190	0	0	1	0
3	B	188	0	0	1	0
All	All	2192	1859	1744	5	0

The all-atom clashscore is defined as the number of clashes found per 1000 atoms (including hydrogen atoms). The all-atom clashscore for this structure is 1.

All (5) close contacts within the same asymmetric unit are listed below, sorted by their clash

magnitude.

Atom-1	Atom-2	Interatomic distance (Å)	Clash overlap (Å)
1:A:73[B]:ASN:ND2	3:A:301:HOH:O	2.30	0.64
1:B:32:ASN:ND2	3:B:306:HOH:O	2.44	0.49
1:A:105:LEU:O	1:A:106:LYS:CG	2.67	0.42
1:B:77:ALA:HA	1:B:81[A]:ILE:HG21	2.00	0.42
1:A:105:LEU:O	1:A:106:LYS:HG2	2.19	0.42

There are no symmetry-related clashes.

5.3 Torsion angles [i](#)

5.3.1 Protein backbone [i](#)

In the following table, the Percentiles column shows the percent Ramachandran outliers of the chain as a percentile score with respect to all X-ray entries followed by that with respect to entries of similar resolution.

The Analysed column shows the number of residues for which the backbone conformation was analysed, and the total number of residues.

Mol	Chain	Analysed	Favoured	Allowed	Outliers	Percentiles	
1	A	113/116 (97%)	113 (100%)	0	0	100	100
1	B	114/116 (98%)	114 (100%)	0	0	100	100
All	All	227/232 (98%)	227 (100%)	0	0	100	100

There are no Ramachandran outliers to report.

5.3.2 Protein sidechains [i](#)

In the following table, the Percentiles column shows the percent sidechain outliers of the chain as a percentile score with respect to all X-ray entries followed by that with respect to entries of similar resolution.

The Analysed column shows the number of residues for which the sidechain conformation was analysed, and the total number of residues.

Mol	Chain	Analysed	Rotameric	Outliers	Percentiles	
1	A	100/101 (99%)	100 (100%)	0	100	100
1	B	102/101 (101%)	102 (100%)	0	100	100

Continued on next page...

Continued from previous page...

Mol	Chain	Analysed	Rotameric	Outliers	Percentiles	
All	All	202/202 (100%)	202 (100%)	0	100	100

There are no protein residues with a non-rotameric sidechain to report.

Sometimes sidechains can be flipped to improve hydrogen bonding and reduce clashes. All (2) such sidechains are listed below:

Mol	Chain	Res	Type
1	A	68	GLN
1	B	32	ASN

5.3.3 RNA [i](#)

There are no RNA molecules in this entry.

5.4 Non-standard residues in protein, DNA, RNA chains [i](#)

There are no non-standard protein/DNA/RNA residues in this entry.

5.5 Carbohydrates [i](#)

There are no monosaccharides in this entry.

5.6 Ligand geometry [i](#)

2 ligands are modelled in this entry.

In the following table, the Counts columns list the number of bonds (or angles) for which Mogul statistics could be retrieved, the number of bonds (or angles) that are observed in the model and the number of bonds (or angles) that are defined in the Chemical Component Dictionary. The Link column lists molecule types, if any, to which the group is linked. The Z score for a bond length (or angle) is the number of standard deviations the observed value is removed from the expected value. A bond length (or angle) with $|Z| > 2$ is considered an outlier worth inspection. RMSZ is the root-mean-square of all Z scores of the bond lengths (or angles).

Mol	Type	Chain	Res	Link	Bond lengths			Bond angles		
					Counts	RMSZ	$\# Z > 2$	Counts	RMSZ	$\# Z > 2$
2	3BO	B	201	-	12,13,13	0.56	0	12,17,17	1.51	2 (16%)
2	3BO	A	201	-	12,13,13	0.93	0	12,17,17	1.03	2 (16%)

In the following table, the Chirals column lists the number of chiral outliers, the number of chiral centers analysed, the number of these observed in the model and the number defined in the Chemical Component Dictionary. Similar counts are reported in the Torsion and Rings columns. '-' means no outliers of that kind were identified.

Mol	Type	Chain	Res	Link	Chirals	Torsions	Rings
2	3BO	B	201	-	-	0/0/3/3	0/2/2/2
2	3BO	A	201	-	-	0/0/3/3	0/2/2/2

There are no bond length outliers.

All (4) bond angle outliers are listed below:

Mol	Chain	Res	Type	Atoms	Z	Observed(°)	Ideal(°)
2	B	201	3BO	C07-C10-C11	-3.00	110.41	113.55
2	B	201	3BO	C02-C03-C04	-2.55	116.60	120.09
2	A	201	3BO	C07-C10-C11	-2.31	111.13	113.55
2	A	201	3BO	C02-C03-C04	-2.02	117.32	120.09

There are no chirality outliers.

There are no torsion outliers.

There are no ring outliers.

No monomer is involved in short contacts.

5.7 Other polymers [i](#)

There are no such residues in this entry.

5.8 Polymer linkage issues [i](#)

There are no chain breaks in this entry.

6 Fit of model and data [i](#)

6.1 Protein, DNA and RNA chains [i](#)

In the following table, the column labelled ‘#RSRZ > 2’ contains the number (and percentage) of RSRZ outliers, followed by percent RSRZ outliers for the chain as percentile scores relative to all X-ray entries and entries of similar resolution. The OWAB column contains the minimum, median, 95th percentile and maximum values of the occupancy-weighted average B-factor per residue. The column labelled ‘Q < 0.9’ lists the number of (and percentage) of residues with an average occupancy less than 0.9.

Mol	Chain	Analysed	<RSRZ>	#RSRZ>2	OWAB(Å ²)	Q<0.9
1	A	105/116 (90%)	-0.49	1 (0%) 82 83	9, 14, 25, 75	0
1	B	104/116 (89%)	-0.42	2 (1%) 66 69	9, 14, 31, 75	0
All	All	209/232 (90%)	-0.45	3 (1%) 75 77	9, 14, 30, 75	0

All (3) RSRZ outliers are listed below:

Mol	Chain	Res	Type	RSRZ
1	B	106	LYS	3.5
1	B	3[A]	GLN	2.4
1	A	106	LYS	2.1

6.2 Non-standard residues in protein, DNA, RNA chains [i](#)

There are no non-standard protein/DNA/RNA residues in this entry.

6.3 Carbohydrates [i](#)

There are no monosaccharides in this entry.

6.4 Ligands [i](#)

In the following table, the Atoms column lists the number of modelled atoms in the group and the number defined in the chemical component dictionary. The B-factors column lists the minimum, median, 95th percentile and maximum values of B factors of atoms in the group. The column labelled ‘Q < 0.9’ lists the number of atoms with occupancy less than 0.9.

Mol	Type	Chain	Res	Atoms	RSCC	RSR	B-factors(Å ²)	Q<0.9
2	3BO	A	201	12/12	0.98	0.05	10,13,18,20	0
2	3BO	B	201	12/12	0.98	0.05	10,12,17,17	0

6.5 Other polymers [i](#)

There are no such residues in this entry.