



Full wwPDB X-ray Structure Validation Report ⓘ

Jun 22, 2024 – 03:41 PM EDT

PDB ID : 6IL3
Title : Crystal structure of the FLT3 kinase bound to a small molecule inhibitor
Authors : Thomas, C.J.
Deposited on : 2018-10-16
Resolution : 2.50 Å(reported)

This is a Full wwPDB X-ray Structure Validation Report for a publicly released PDB entry.

We welcome your comments at validation@mail.wwpdb.org

A user guide is available at

<https://www.wwpdb.org/validation/2017/XrayValidationReportHelp>

with specific help available everywhere you see the ⓘ symbol.

The types of validation reports are described at

<http://www.wwpdb.org/validation/2017/FAQs#types>.

The following versions of software and data (see [references ⓘ](#)) were used in the production of this report:

MolProbity : 4.02b-467
Mogul : 2022.3.0, CSD as543be (2022)
Xtriage (Phenix) : 1.20.1
EDS : 2.37.1
buster-report : 1.1.7 (2018)
Percentile statistics : 20191225.v01 (using entries in the PDB archive December 25th 2019)
Refmac : 5.8.0158
CCP4 : 7.0.044 (Gargrove)
Ideal geometry (proteins) : Engh & Huber (2001)
Ideal geometry (DNA, RNA) : Parkinson et al. (1996)
Validation Pipeline (wwPDB-VP) : 2.37.1

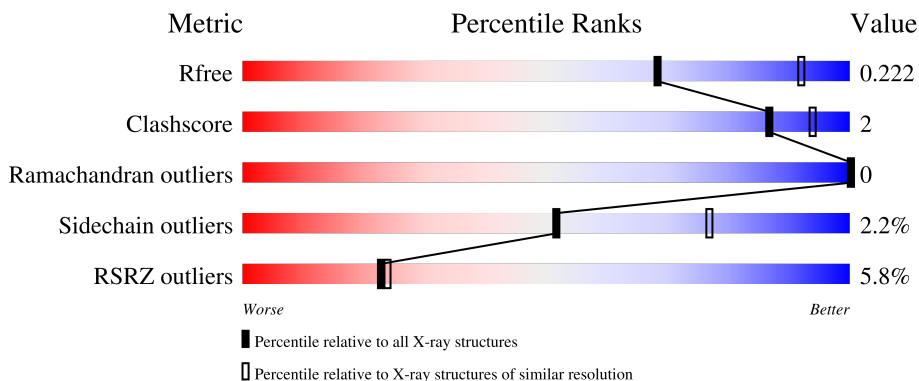
1 Overall quality at a glance

The following experimental techniques were used to determine the structure:

X-RAY DIFFRACTION

The reported resolution of this entry is 2.50 Å.

Percentile scores (ranging between 0-100) for global validation metrics of the entry are shown in the following graphic. The table shows the number of entries on which the scores are based.



Metric	Whole archive (#Entries)	Similar resolution (#Entries, resolution range(Å))
R_{free}	130704	4661 (2.50-2.50)
Clashscore	141614	5346 (2.50-2.50)
Ramachandran outliers	138981	5231 (2.50-2.50)
Sidechain outliers	138945	5233 (2.50-2.50)
RSRZ outliers	127900	4559 (2.50-2.50)

The table below summarises the geometric issues observed across the polymeric chains and their fit to the electron density. The red, orange, yellow and green segments of the lower bar indicate the fraction of residues that contain outliers for ≥ 3 , 2, 1 and 0 types of geometric quality criteria respectively. A grey segment represents the fraction of residues that are not modelled. The numeric value for each fraction is indicated below the corresponding segment, with a dot representing fractions $\leq 5\%$. The upper red bar (where present) indicates the fraction of residues that have poor fit to the electron density. The numeric value is given above the bar.

Mol	Chain	Length	Quality of chain
1	A	370	

The following table lists non-polymeric compounds, carbohydrate monomers and non-standard residues in protein, DNA, RNA chains that are outliers for geometric or electron-density-fit criteria:

Mol	Type	Chain	Res	Chirality	Geometry	Clashes	Electron density
3	PO4	A	1005	-	-	-	X

2 Entry composition

There are 7 unique types of molecules in this entry. The entry contains 2708 atoms, of which 0 are hydrogens and 0 are deuteriums.

In the tables below, the ZeroOcc column contains the number of atoms modelled with zero occupancy, the AltConf column contains the number of residues with at least one atom in alternate conformation and the Trace column contains the number of residues modelled with at most 2 atoms.

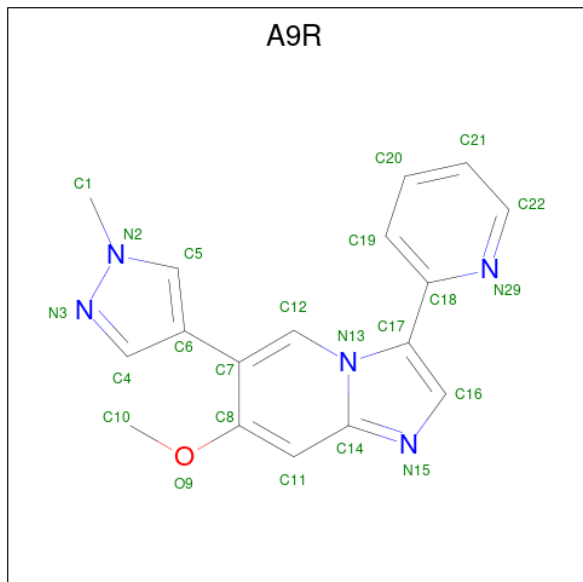
- Molecule 1 is a protein called Receptor-type tyrosine-protein kinase FLT3.

Mol	Chain	Residues	Atoms					ZeroOcc	AltConf	Trace
			Total	C	N	O	S			
1	A	310	2518	1628	409	462	19	0	2	0

There are 26 discrepancies between the modelled and reference sequences:

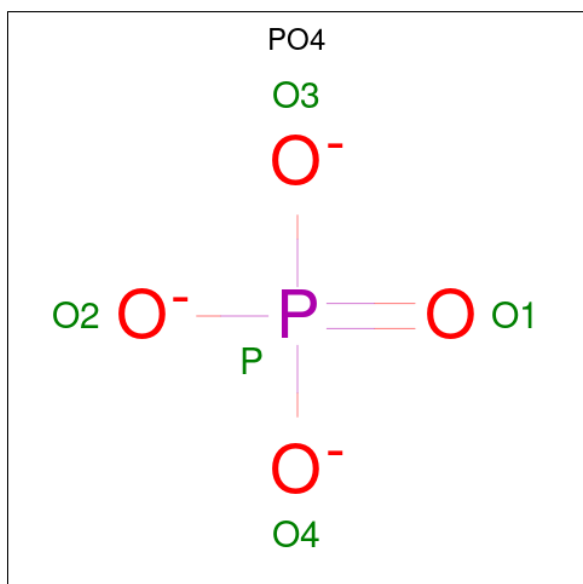
Chain	Residue	Modelled	Actual	Comment	Reference
A	538	MET	-	expression tag	UNP P36888
A	539	SER	-	expression tag	UNP P36888
A	540	TYR	-	expression tag	UNP P36888
A	541	TYR	-	expression tag	UNP P36888
A	542	HIS	-	expression tag	UNP P36888
A	543	HIS	-	expression tag	UNP P36888
A	544	HIS	-	expression tag	UNP P36888
A	545	HIS	-	expression tag	UNP P36888
A	546	HIS	-	expression tag	UNP P36888
A	547	HIS	-	expression tag	UNP P36888
A	548	ASP	-	expression tag	UNP P36888
A	549	TYR	-	expression tag	UNP P36888
A	550	ASP	-	expression tag	UNP P36888
A	551	ILE	-	expression tag	UNP P36888
A	552	PRO	-	expression tag	UNP P36888
A	553	THR	-	expression tag	UNP P36888
A	554	THR	-	expression tag	UNP P36888
A	555	GLU	-	expression tag	UNP P36888
A	556	ASN	-	expression tag	UNP P36888
A	557	LEU	-	expression tag	UNP P36888
A	558	TYR	-	expression tag	UNP P36888
A	559	PHE	-	expression tag	UNP P36888
A	560	GLN	-	expression tag	UNP P36888
A	561	SER	-	expression tag	UNP P36888
A	562	ILE	-	expression tag	UNP P36888
A	563	ALA	-	expression tag	UNP P36888

- Molecule 2 is 7-methoxy-6-(1-methyl-1H-pyrazol-4-yl)-3-(pyridin-2-yl)imidazo[1,2-a]pyridine (three-letter code: A9R) (formula: $C_{17}H_{15}N_5O$).



Mol	Chain	Residues	Atoms				ZeroOcc	AltConf
			Total	C	N	O		
2	A	1	46	34	10	2	0	1

- Molecule 3 is PHOSPHATE ION (three-letter code: PO4) (formula: O_4P).



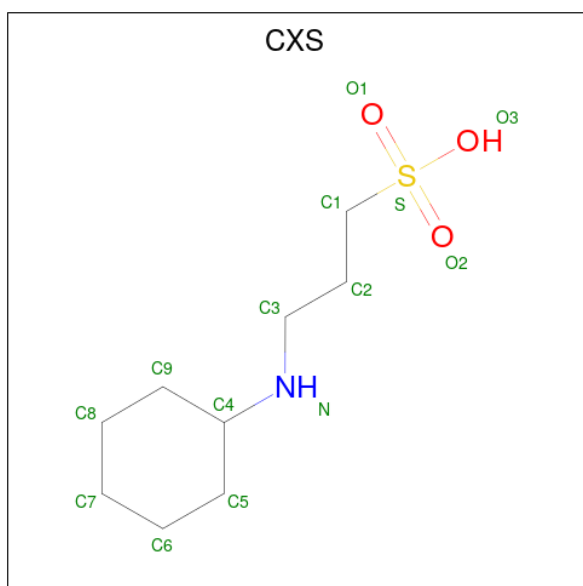
Mol	Chain	Residues	Atoms			ZeroOcc	AltConf
			Total	O	P		
3	A	1	5	4	1	0	0

Continued on next page...

Continued from previous page...

Mol	Chain	Residues	Atoms			ZeroOcc	AltConf
3	A	1	Total	O	P	0	0
			5	4	1		
3	A	1	Total	O	P	0	0
			5	4	1		
3	A	1	Total	O	P	0	0
			5	4	1		

- Molecule 4 is 3-CYCLOHEXYL-1-PROPYLSULFONIC ACID (three-letter code: CXS) (formula: $C_9H_{19}NO_3S$).



Mol	Chain	Residues	Atoms					ZeroOcc	AltConf
4	A	1	Total	C	N	O	S	0	0
			14	9	1	3	1		
4	A	1	Total	C	N	O	S	0	0
			14	9	1	3	1		

- Molecule 5 is GLYCEROL (three-letter code: GOL) (formula: $C_3H_8O_3$).



Mol	Chain	Residues	Atoms	ZeroOcc	AltConf
5	A	1	Total C O 6 3 3	0	0
5	A	1	Total C O 6 3 3	0	0
5	A	1	Total C O 6 3 3	0	0
5	A	1	Total C O 6 3 3	0	0
5	A	1	Total C O 6 3 3	0	0
5	A	1	Total C O 6 3 3	0	0
5	A	1	Total C O 6 3 3	0	0
5	A	1	Total C O 6 3 3	0	0
5	A	1	Total C O 6 3 3	0	0
5	A	1	Total C O 6 3 3	0	0

- Molecule 6 is CHLORIDE ION (three-letter code: CL) (formula: Cl).

Mol	Chain	Residues	Atoms	ZeroOcc	AltConf
6	A	3	Total Cl 3 3	0	0

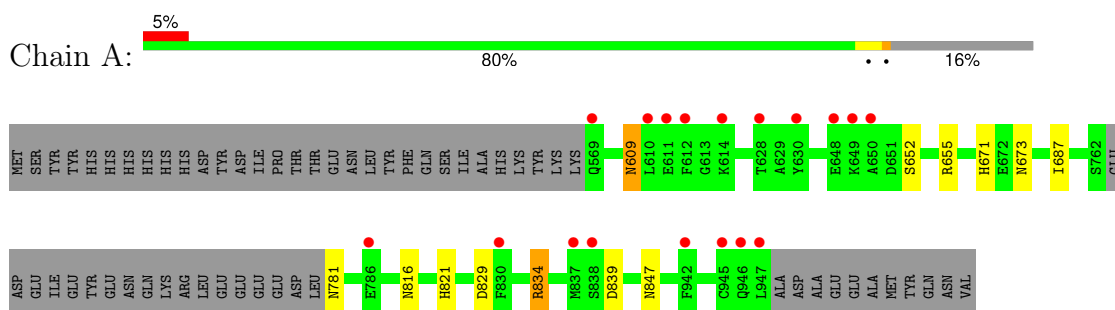
- Molecule 7 is water.

Mol	Chain	Residues	Atoms		ZeroOcc	AltConf
7	A	33	Total 33	O 33	0	0

3 Residue-property plots [i](#)

These plots are drawn for all protein, RNA, DNA and oligosaccharide chains in the entry. The first graphic for a chain summarises the proportions of the various outlier classes displayed in the second graphic. The second graphic shows the sequence view annotated by issues in geometry and electron density. Residues are color-coded according to the number of geometric quality criteria for which they contain at least one outlier: green = 0, yellow = 1, orange = 2 and red = 3 or more. A red dot above a residue indicates a poor fit to the electron density ($RSRZ > 2$). Stretches of 2 or more consecutive residues without any outlier are shown as a green connector. Residues present in the sample, but not in the model, are shown in grey.

- Molecule 1: Receptor-type tyrosine-protein kinase FLT3



4 Data and refinement statistics

Property	Value	Source
Space group	P 43 21 2	Depositor
Cell constants a, b, c, α , β , γ	81.64Å 81.64Å 147.84Å 90.00° 90.00° 90.00°	Depositor
Resolution (Å)	45.50 – 2.50 45.50 – 2.50	Depositor EDS
% Data completeness (in resolution range)	100.0 (45.50-2.50) 100.0 (45.50-2.50)	Depositor EDS
R_{merge}	0.15	Depositor
R_{sym}	(Not available)	Depositor
$\langle I/\sigma(I) \rangle$ ¹	2.20 (at 2.51Å)	Xtrriage
Refinement program	REFMAC 5.8.0232	Depositor
R, R_{free}	0.183 , 0.219 0.189 , 0.222	Depositor DCC
R_{free} test set	946 reflections (5.26%)	wwPDB-VP
Wilson B-factor (Å ²)	59.4	Xtrriage
Anisotropy	0.021	Xtrriage
Bulk solvent k_{sol} (e/Å ³), B_{sol} (Å ²)	0.36 , 44.2	EDS
L-test for twinning ²	$\langle L \rangle = 0.49$, $\langle L^2 \rangle = 0.33$	Xtrriage
Estimated twinning fraction	No twinning to report.	Xtrriage
F_o, F_c correlation	0.95	EDS
Total number of atoms	2708	wwPDB-VP
Average B, all atoms (Å ²)	65.0	wwPDB-VP

Xtrriage's analysis on translational NCS is as follows: *The largest off-origin peak in the Patterson function is 4.66% of the height of the origin peak. No significant pseudotranslation is detected.*

¹Intensities estimated from amplitudes.

²Theoretical values of $\langle |L| \rangle$, $\langle L^2 \rangle$ for acentric reflections are 0.5, 0.333 respectively for untwinned datasets, and 0.375, 0.2 for perfectly twinned datasets.

5 Model quality [i](#)

5.1 Standard geometry [i](#)

Bond lengths and bond angles in the following residue types are not validated in this section: PO4, CL, A9R, GOL, CXS

The Z score for a bond length (or angle) is the number of standard deviations the observed value is removed from the expected value. A bond length (or angle) with $|Z| > 5$ is considered an outlier worth inspection. RMSZ is the root-mean-square of all Z scores of the bond lengths (or angles).

Mol	Chain	Bond lengths		Bond angles	
		RMSZ	# Z >5	RMSZ	# Z >5
1	A	0.52	0/2578	0.69	0/3478

There are no bond length outliers.

There are no bond angle outliers.

There are no chirality outliers.

There are no planarity outliers.

5.2 Too-close contacts [i](#)

In the following table, the Non-H and H(model) columns list the number of non-hydrogen atoms and hydrogen atoms in the chain respectively. The H(added) column lists the number of hydrogen atoms added and optimized by MolProbity. The Clashes column lists the number of clashes within the asymmetric unit, whereas Symm-Clashes lists symmetry-related clashes.

Mol	Chain	Non-H	H(model)	H(added)	Clashes	Symm-Clashes
1	A	2518	0	2474	10	0
2	A	46	0	0	1	0
3	A	20	0	0	0	0
4	A	28	0	37	0	0
5	A	60	0	80	1	0
6	A	3	0	0	2	0
7	A	33	0	0	0	0
All	All	2708	0	2591	11	0

The all-atom clashscore is defined as the number of clashes found per 1000 atoms (including hydrogen atoms). The all-atom clashscore for this structure is 2.

All (11) close contacts within the same asymmetric unit are listed below, sorted by their clash magnitude.

Atom-1	Atom-2	Interatomic distance (Å)	Clash overlap (Å)
1:A:834[B]:ARG:NH2	6:A:1020:CL:CL	2.63	0.69
1:A:609:ASN:N	1:A:609:ASN:HD22	2.05	0.55
1:A:821:HIS:NE2	5:A:1008:GOL:O2	2.39	0.53
1:A:816:ASN:HD21	1:A:834[B]:ARG:NH1	2.08	0.51
1:A:829:ASP:OD1	6:A:1018:CL:CL	2.66	0.50
1:A:816:ASN:ND2	1:A:834[B]:ARG:NH1	2.63	0.47
1:A:816:ASN:ND2	1:A:834[A]:ARG:HH12	2.13	0.47
1:A:655:ARG:HG3	1:A:687:ILE:HD12	1.99	0.45
2:A:1001[A]:A9R:C19	2:A:1001[A]:A9R:C12	2.96	0.44
1:A:816:ASN:ND2	1:A:834[B]:ARG:HH12	2.16	0.44
1:A:671:HIS:CD2	1:A:673:ASN:H	2.37	0.42

There are no symmetry-related clashes.

5.3 Torsion angles [i](#)

5.3.1 Protein backbone [i](#)

In the following table, the Percentiles column shows the percent Ramachandran outliers of the chain as a percentile score with respect to all X-ray entries followed by that with respect to entries of similar resolution.

The Analysed column shows the number of residues for which the backbone conformation was analysed, and the total number of residues.

Mol	Chain	Analysed	Favoured	Allowed	Outliers	Percentiles
1	A	308/370 (83%)	301 (98%)	7 (2%)	0	100 100

There are no Ramachandran outliers to report.

5.3.2 Protein sidechains [i](#)

In the following table, the Percentiles column shows the percent sidechain outliers of the chain as a percentile score with respect to all X-ray entries followed by that with respect to entries of similar resolution.

The Analysed column shows the number of residues for which the sidechain conformation was analysed, and the total number of residues.

Mol	Chain	Analysed	Rotameric	Outliers	Percentiles
1	A	274/328 (84%)	267 (97%)	7 (3%)	46 72

All (7) residues with a non-rotameric sidechain are listed below:

Mol	Chain	Res	Type
1	A	609	ASN
1	A	652	SER
1	A	781	ASN
1	A	834[A]	ARG
1	A	834[B]	ARG
1	A	839	ASP
1	A	847	ASN

Sometimes sidechains can be flipped to improve hydrogen bonding and reduce clashes. All (3) such sidechains are listed below:

Mol	Chain	Res	Type
1	A	609	ASN
1	A	816	ASN
1	A	910	GLN

5.3.3 RNA [i](#)

There are no RNA molecules in this entry.

5.4 Non-standard residues in protein, DNA, RNA chains [i](#)

There are no non-standard protein/DNA/RNA residues in this entry.

5.5 Carbohydrates [i](#)

There are no monosaccharides in this entry.

5.6 Ligand geometry [i](#)

Of 21 ligands modelled in this entry, 3 are monoatomic - leaving 18 for Mogul analysis.

In the following table, the Counts columns list the number of bonds (or angles) for which Mogul statistics could be retrieved, the number of bonds (or angles) that are observed in the model and the number of bonds (or angles) that are defined in the Chemical Component Dictionary. The Link column lists molecule types, if any, to which the group is linked. The Z score for a bond length (or angle) is the number of standard deviations the observed value is removed from the expected value. A bond length (or angle) with $|Z| > 2$ is considered an outlier worth inspection. RMSZ is the root-mean-square of all Z scores of the bond lengths (or angles).

Mol	Type	Chain	Res	Link	Bond lengths			Bond angles		
					Counts	RMSZ	# Z > 2	Counts	RMSZ	# Z > 2
5	GOL	A	1014	-	5,5,5	0.40	0	5,5,5	0.26	0
3	PO4	A	1004	-	4,4,4	0.93	0	6,6,6	0.96	0
5	GOL	A	1009	-	5,5,5	0.40	0	5,5,5	0.21	0
5	GOL	A	1016	-	5,5,5	0.43	0	5,5,5	0.21	0
2	A9R	A	1001[B]	-	21,26,26	1.27	2 (9%)	20,37,37	1.56	4 (20%)
3	PO4	A	1003	-	4,4,4	1.12	0	6,6,6	0.91	0
5	GOL	A	1017	-	5,5,5	0.48	0	5,5,5	0.48	0
2	A9R	A	1001[A]	-	21,26,26	1.31	3 (14%)	20,37,37	1.67	5 (25%)
5	GOL	A	1010	-	5,5,5	0.53	0	5,5,5	0.50	0
5	GOL	A	1013	-	5,5,5	0.40	0	5,5,5	0.16	0
5	GOL	A	1015	-	5,5,5	0.41	0	5,5,5	0.24	0
5	GOL	A	1008	-	5,5,5	0.37	0	5,5,5	0.30	0
5	GOL	A	1012	-	5,5,5	0.48	0	5,5,5	0.23	0
3	PO4	A	1002	-	4,4,4	1.06	0	6,6,6	0.58	0
3	PO4	A	1005	-	4,4,4	0.69	0	6,6,6	0.98	0
5	GOL	A	1011	-	5,5,5	0.45	0	5,5,5	0.53	0
4	CXS	A	1007	-	14,14,14	2.60	2 (14%)	18,18,18	1.47	3 (16%)
4	CXS	A	1006	-	14,14,14	2.84	2 (14%)	18,18,18	1.67	4 (22%)

In the following table, the Chirals column lists the number of chiral outliers, the number of chiral centers analysed, the number of these observed in the model and the number defined in the Chemical Component Dictionary. Similar counts are reported in the Torsion and Rings columns. '2' means no outliers of that kind were identified.

Mol	Type	Chain	Res	Link	Chirals	Torsions	Rings
5	GOL	A	1014	-	-	0/4/4/4	-
5	GOL	A	1009	-	-	2/4/4/4	-
5	GOL	A	1016	-	-	3/4/4/4	-
2	A9R	A	1001[B]	-	-	4/10/10/10	0/4/4/4
5	GOL	A	1017	-	-	4/4/4/4	-
2	A9R	A	1001[A]	-	-	8/10/10/10	0/4/4/4
5	GOL	A	1010	-	-	4/4/4/4	-
5	GOL	A	1013	-	-	4/4/4/4	-
5	GOL	A	1015	-	-	2/4/4/4	-
5	GOL	A	1008	-	-	0/4/4/4	-
5	GOL	A	1012	-	-	4/4/4/4	-
5	GOL	A	1011	-	-	2/4/4/4	-
4	CXS	A	1007	-	-	5/8/16/16	0/1/1/1
4	CXS	A	1006	-	-	3/8/16/16	0/1/1/1

All (9) bond length outliers are listed below:

Mol	Chain	Res	Type	Atoms	Z	Observed(Å)	Ideal(Å)
4	A	1006	CXS	C1-S	-8.46	1.65	1.77
4	A	1007	CXS	C1-S	-8.24	1.66	1.77
4	A	1006	CXS	O1-S	6.27	1.62	1.45
4	A	1007	CXS	O3-S	4.69	1.64	1.47
2	A	1001[A]	A9R	C12-C7	-2.85	1.34	1.39
2	A	1001[B]	A9R	C12-C7	-2.75	1.34	1.39
2	A	1001[A]	A9R	C1-N2	-2.38	1.45	1.47
2	A	1001[B]	A9R	C16-N15	-2.15	1.32	1.36
2	A	1001[A]	A9R	C16-N15	-2.14	1.32	1.36

All (16) bond angle outliers are listed below:

Mol	Chain	Res	Type	Atoms	Z	Observed(°)	Ideal(°)
4	A	1006	CXS	O2-S-C1	4.37	113.33	106.73
4	A	1007	CXS	C2-C1-S	-3.64	107.67	113.25
2	A	1001[A]	A9R	C4-N3-N2	3.33	107.70	104.23
4	A	1006	CXS	O3-S-C1	3.21	112.29	106.00
2	A	1001[B]	A9R	C4-N3-N2	3.19	107.56	104.23
4	A	1006	CXS	C3-N-C4	2.88	119.72	114.18
2	A	1001[A]	A9R	C22-N29-C18	2.88	121.26	117.24
4	A	1007	CXS	C3-N-C4	2.82	119.62	114.18
2	A	1001[A]	A9R	C5-N2-N3	-2.71	109.20	111.56
4	A	1007	CXS	O3-S-C1	2.66	111.20	106.00
2	A	1001[B]	A9R	C5-N2-N3	-2.50	109.38	111.56
4	A	1006	CXS	O2-S-O1	-2.50	105.70	113.82
2	A	1001[A]	A9R	C6-C7-C8	-2.46	117.45	122.42
2	A	1001[B]	A9R	C22-N29-C18	2.42	120.62	117.24
2	A	1001[A]	A9R	C12-C7-C6	2.16	121.88	119.16
2	A	1001[B]	A9R	C6-C7-C8	-2.11	118.15	122.42

There are no chirality outliers.

All (45) torsion outliers are listed below:

Mol	Chain	Res	Type	Atoms
2	A	1001[A]	A9R	C4-C6-C7-C12
2	A	1001[A]	A9R	C5-C6-C7-C12
2	A	1001[A]	A9R	N13-C17-C18-C19
2	A	1001[A]	A9R	N13-C17-C18-N29
2	A	1001[A]	A9R	C16-C17-C18-C19
2	A	1001[A]	A9R	C16-C17-C18-N29
2	A	1001[B]	A9R	C4-C6-C7-C12

Continued on next page...

Continued from previous page...

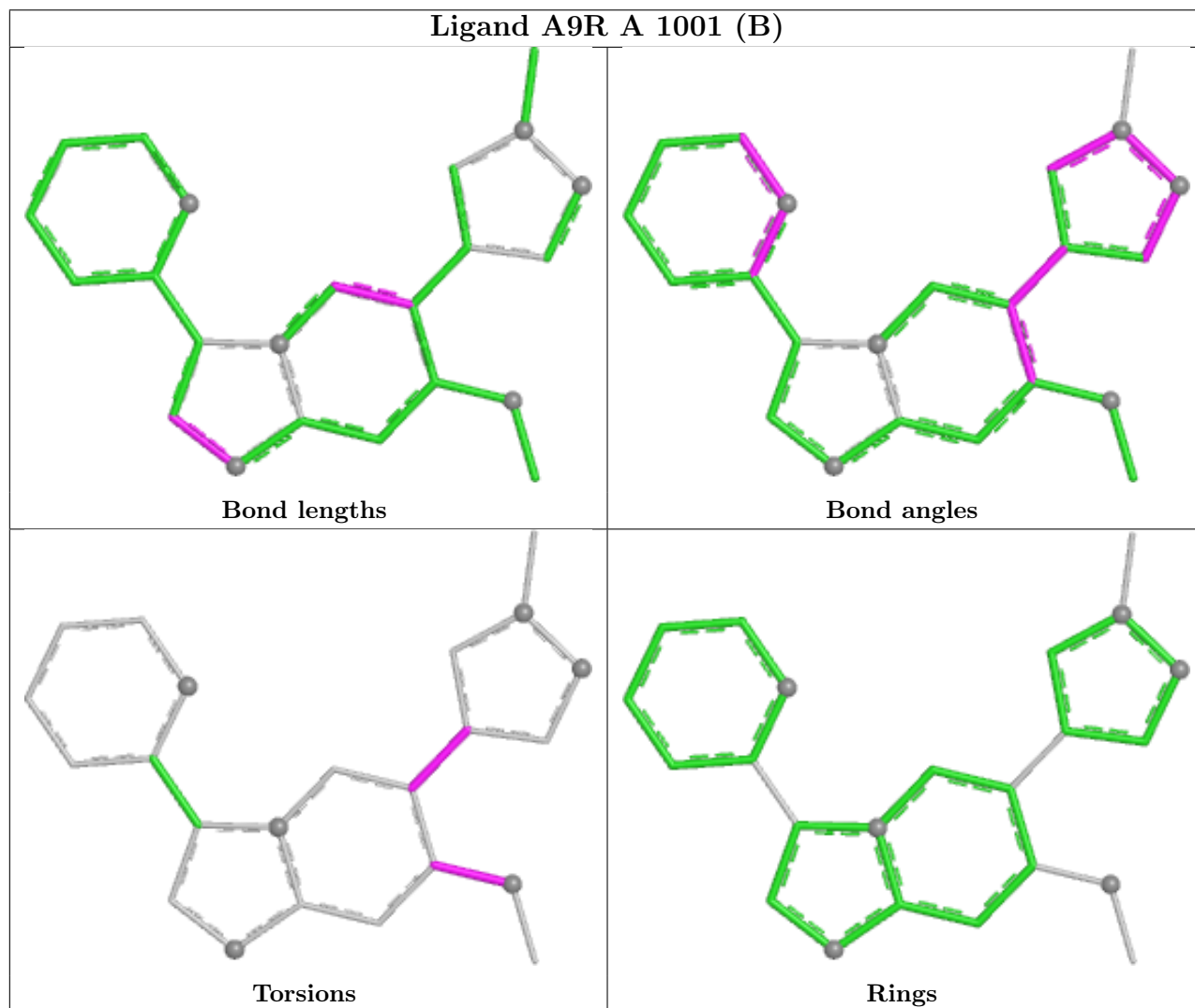
Mol	Chain	Res	Type	Atoms
2	A	1001[B]	A9R	C5-C6-C7-C12
4	A	1006	CXS	C2-C1-S-O1
5	A	1009	GOL	O1-C1-C2-C3
5	A	1012	GOL	O1-C1-C2-C3
5	A	1012	GOL	C1-C2-C3-O3
5	A	1012	GOL	O2-C2-C3-O3
5	A	1013	GOL	O1-C1-C2-C3
5	A	1013	GOL	C1-C2-C3-O3
5	A	1013	GOL	O2-C2-C3-O3
5	A	1015	GOL	O1-C1-C2-C3
5	A	1017	GOL	O1-C1-C2-C3
5	A	1017	GOL	C1-C2-C3-O3
4	A	1006	CXS	C2-C1-S-O3
5	A	1010	GOL	O1-C1-C2-O2
5	A	1011	GOL	O2-C2-C3-O3
5	A	1012	GOL	O1-C1-C2-O2
5	A	1010	GOL	O1-C1-C2-C3
5	A	1010	GOL	C1-C2-C3-O3
5	A	1011	GOL	C1-C2-C3-O3
5	A	1016	GOL	O1-C1-C2-C3
5	A	1016	GOL	C1-C2-C3-O3
5	A	1009	GOL	O1-C1-C2-O2
5	A	1010	GOL	O2-C2-C3-O3
5	A	1013	GOL	O1-C1-C2-O2
5	A	1015	GOL	O1-C1-C2-O2
5	A	1016	GOL	O2-C2-C3-O3
5	A	1017	GOL	O1-C1-C2-O2
5	A	1017	GOL	O2-C2-C3-O3
4	A	1007	CXS	C2-C1-S-O3
4	A	1006	CXS	C2-C1-S-O2
4	A	1007	CXS	C2-C1-S-O1
4	A	1007	CXS	C2-C1-S-O2
4	A	1007	CXS	C2-C3-N-C4
2	A	1001[B]	A9R	C11-C8-O9-C10
2	A	1001[B]	A9R	C7-C8-O9-C10
2	A	1001[A]	A9R	C11-C8-O9-C10
2	A	1001[A]	A9R	C7-C8-O9-C10
4	A	1007	CXS	C1-C2-C3-N

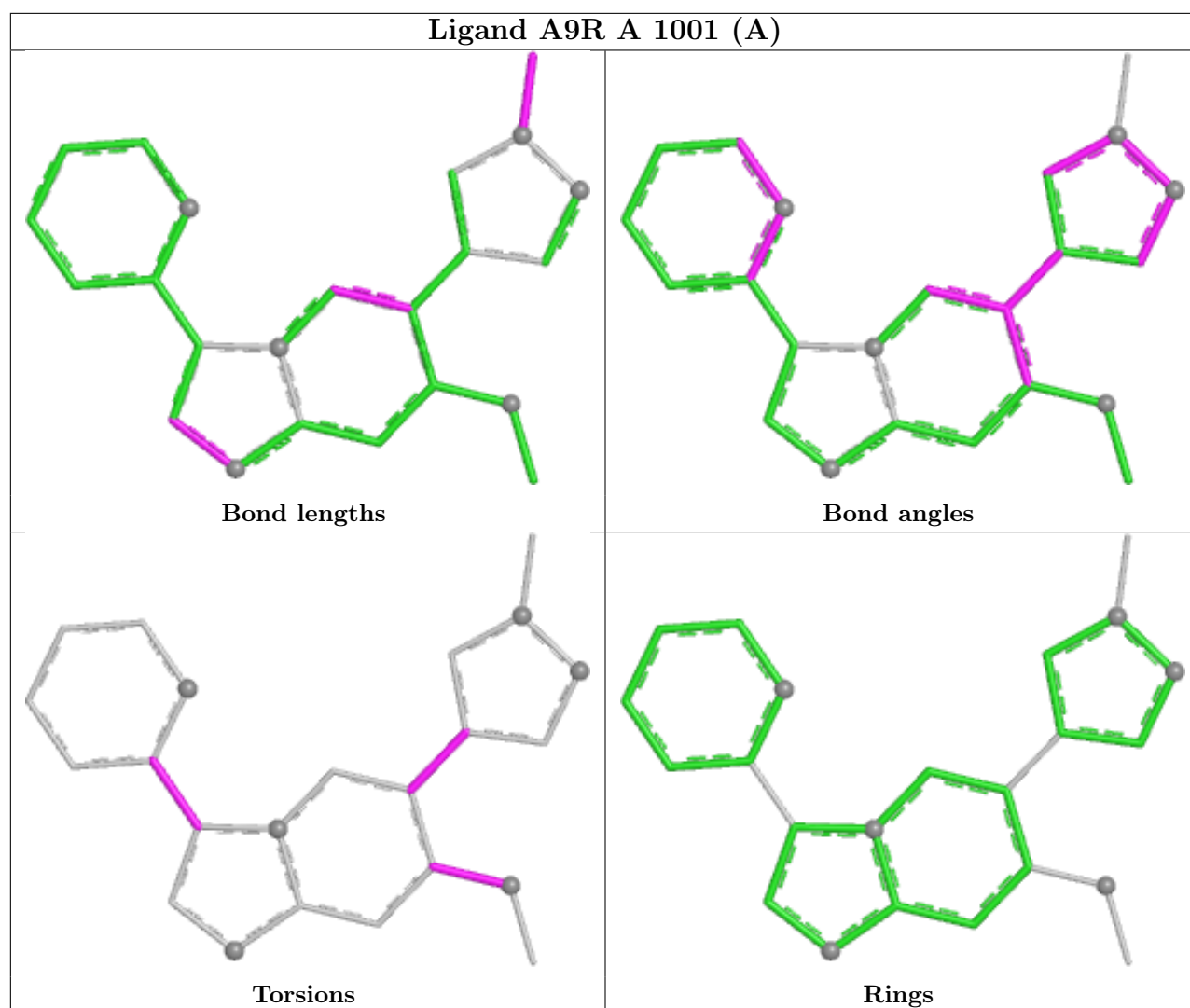
There are no ring outliers.

2 monomers are involved in 2 short contacts:

Mol	Chain	Res	Type	Clashes	Symm-Clashes
2	A	1001[A]	A9R	1	0
5	A	1008	GOL	1	0

The following is a two-dimensional graphical depiction of Mogul quality analysis of bond lengths, bond angles, torsion angles, and ring geometry for all instances of the Ligand of Interest. In addition, ligands with molecular weight > 250 and outliers as shown on the validation Tables will also be included. For torsion angles, if less than 5% of the Mogul distribution of torsion angles is within 10 degrees of the torsion angle in question, then that torsion angle is considered an outlier. Any bond that is central to one or more torsion angles identified as an outlier by Mogul will be highlighted in the graph. For rings, the root-mean-square deviation (RMSD) between the ring in question and similar rings identified by Mogul is calculated over all ring torsion angles. If the average RMSD is greater than 60 degrees and the minimal RMSD between the ring in question and any Mogul-identified rings is also greater than 60 degrees, then that ring is considered an outlier. The outliers are highlighted in purple. The color gray indicates Mogul did not find sufficient equivalents in the CSD to analyse the geometry.





5.7 Other polymers [i](#)

There are no such residues in this entry.

5.8 Polymer linkage issues [i](#)

There are no chain breaks in this entry.

6 Fit of model and data [i](#)

6.1 Protein, DNA and RNA chains [i](#)

In the following table, the column labelled ‘#RSRZ > 2’ contains the number (and percentage) of RSRZ outliers, followed by percent RSRZ outliers for the chain as percentile scores relative to all X-ray entries and entries of similar resolution. The OWAB column contains the minimum, median, 95th percentile and maximum values of the occupancy-weighted average B-factor per residue. The column labelled ‘Q < 0.9’ lists the number of (and percentage) of residues with an average occupancy less than 0.9.

Mol	Chain	Analysed	<RSRZ>	#RSRZ>2	OWAB(Å ²)	Q<0.9
1	A	310/370 (83%)	0.21	18 (5%) 23 24	39, 60, 101, 128	0

All (18) RSRZ outliers are listed below:

Mol	Chain	Res	Type	RSRZ
1	A	650	ALA	4.6
1	A	945	CYS	4.5
1	A	612	PHE	4.0
1	A	630	TYR	3.9
1	A	946	GLN	3.8
1	A	942	PHE	3.5
1	A	611	GLU	3.3
1	A	649	LYS	3.1
1	A	648	GLU	3.0
1	A	569	GLN	2.6
1	A	786	GLU	2.6
1	A	610	LEU	2.6
1	A	838	SER	2.5
1	A	830	PHE	2.3
1	A	837	MET	2.2
1	A	628	THR	2.2
1	A	614	LYS	2.1
1	A	947	LEU	2.0

6.2 Non-standard residues in protein, DNA, RNA chains [i](#)

There are no non-standard protein/DNA/RNA residues in this entry.

6.3 Carbohydrates [i](#)

There are no monosaccharides in this entry.

6.4 Ligands [i](#)

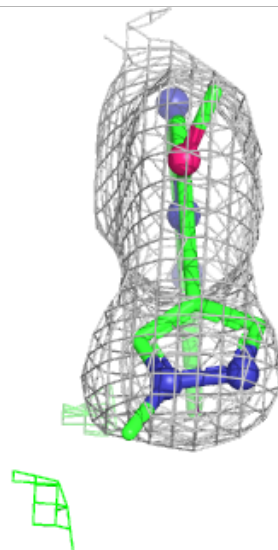
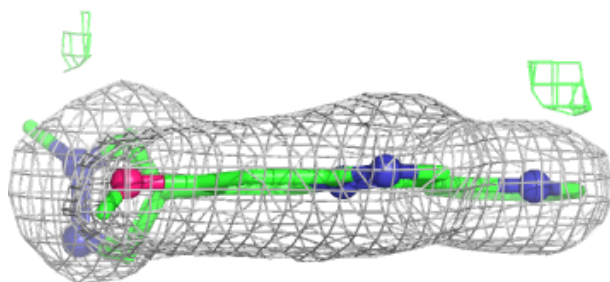
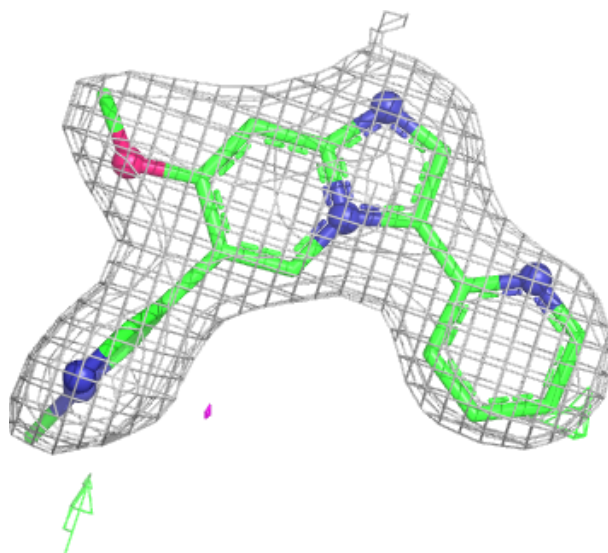
In the following table, the Atoms column lists the number of modelled atoms in the group and the number defined in the chemical component dictionary. The B-factors column lists the minimum, median, 95th percentile and maximum values of B factors of atoms in the group. The column labelled 'Q< 0.9' lists the number of atoms with occupancy less than 0.9.

Mol	Type	Chain	Res	Atoms	RSCC	RSR	B-factors(Å ²)	Q<0.9
3	PO4	A	1005	5/5	0.73	0.51	105,108,120,123	0
5	GOL	A	1015	6/6	0.74	0.28	95,98,99,100	0
5	GOL	A	1014	6/6	0.77	0.34	80,89,92,95	0
5	GOL	A	1008	6/6	0.79	0.37	85,90,91,94	0
5	GOL	A	1017	6/6	0.81	0.30	97,102,104,105	0
5	GOL	A	1011	6/6	0.82	0.28	73,84,87,90	0
5	GOL	A	1010	6/6	0.83	0.28	80,88,95,99	0
6	CL	A	1018	1/1	0.83	0.10	88,88,88,88	0
5	GOL	A	1013	6/6	0.84	0.17	85,94,97,98	0
6	CL	A	1020	1/1	0.86	0.13	104,104,104,104	0
5	GOL	A	1016	6/6	0.87	0.46	89,94,99,101	0
5	GOL	A	1012	6/6	0.88	0.36	75,88,90,91	0
4	CXS	A	1007	14/14	0.90	0.17	84,89,107,110	0
5	GOL	A	1009	6/6	0.92	0.22	70,76,77,78	0
6	CL	A	1019	1/1	0.94	0.13	92,92,92,92	0
3	PO4	A	1004	5/5	0.95	0.18	80,83,90,92	0
2	A9R	A	1001[A]	23/23	0.96	0.16	64,67,78,79	23
2	A9R	A	1001[B]	23/23	0.96	0.16	64,66,73,74	23
3	PO4	A	1002	5/5	0.97	0.13	72,77,79,88	0
4	CXS	A	1006	14/14	0.98	0.17	53,59,72,73	0
3	PO4	A	1003	5/5	1.00	0.12	57,60,61,61	0

The following is a graphical depiction of the model fit to experimental electron density of all instances of the Ligand of Interest. In addition, ligands with molecular weight > 250 and outliers as shown on the geometry validation Tables will also be included. Each fit is shown from different orientation to approximate a three-dimensional view.

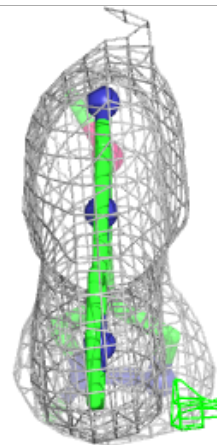
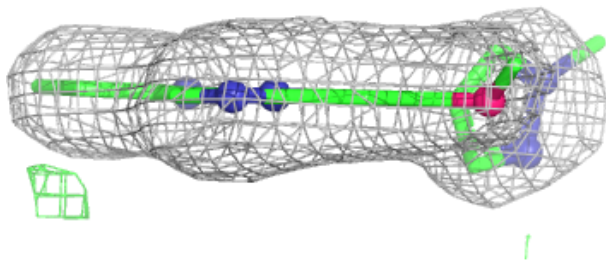
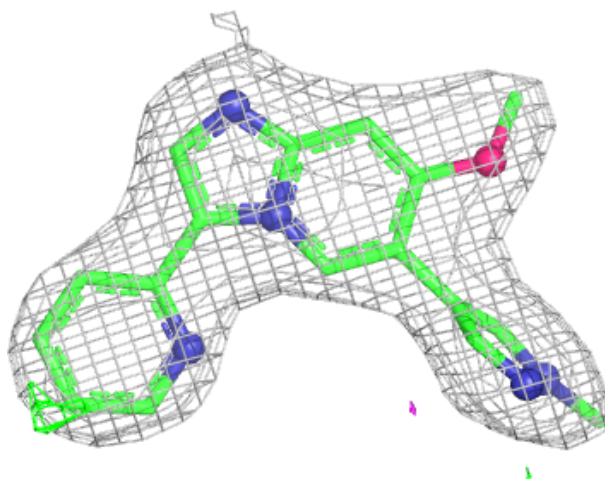
Electron density around A9R A 1001 (A):

$2mF_o-DF_c$ (at 0.7 rmsd) in gray
 mF_o-DF_c (at 3 rmsd) in purple (negative)
and green (positive)



Electron density around A9R A 1001 (B):

$2mF_o-DF_c$ (at 0.7 rmsd) in gray
 mF_o-DF_c (at 3 rmsd) in purple (negative)
and green (positive)



6.5 Other polymers [\(i\)](#)

There are no such residues in this entry.