



Full wwPDB EM Validation Report ⓘ

Jul 3, 2024 – 03:52 am BST

PDB ID : 6S2E
EMDB ID : EMD-10088
Title : Cryo-EM structure of Ctf18-1-8 in complex with the catalytic domain of DNA polymerase epsilon
Authors : Grabarczyk, D.B.; Song, B.
Deposited on : 2019-06-20
Resolution : 4.20 Å (reported)
Based on initial models : 5OKC, 4M8O

This is a Full wwPDB EM Validation Report for a publicly released PDB entry.

We welcome your comments at validation@mail.wwpdb.org

A user guide is available at

<https://www.wwpdb.org/validation/2017/EMValidationReportHelp>

with specific help available everywhere you see the ⓘ symbol.

The types of validation reports are described at

<http://www.wwpdb.org/validation/2017/FAQs#types>.

The following versions of software and data (see [references ⓘ](#)) were used in the production of this report:

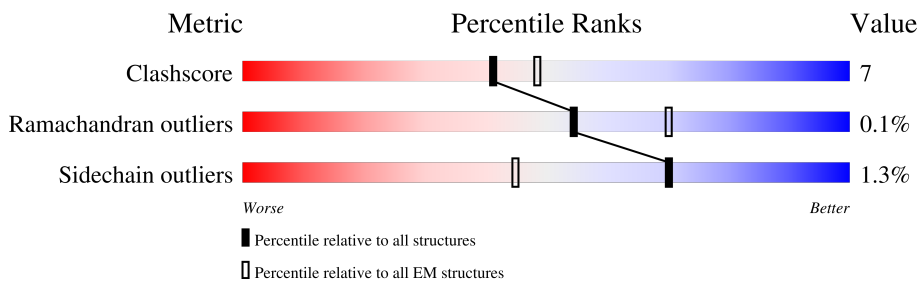
EMDB validation analysis : 0.0.1.dev92
Mogul : 1.8.4, CSD as541be (2020)
MolProbity : 4.02b-467
Percentile statistics : 20191225.v01 (using entries in the PDB archive December 25th 2019)
MapQ : 1.9.13
Ideal geometry (proteins) : Engh & Huber (2001)
Ideal geometry (DNA, RNA) : Parkinson et al. (1996)
Validation Pipeline (wwPDB-VP) : 2.37.1

1 Overall quality at a glance

The following experimental techniques were used to determine the structure:
ELECTRON MICROSCOPY

The reported resolution of this entry is 4.20 Å.

Percentile scores (ranging between 0-100) for global validation metrics of the entry are shown in the following graphic. The table shows the number of entries on which the scores are based.



Metric	Whole archive (#Entries)	EM structures (#Entries)
Clashscore	158937	4297
Ramachandran outliers	154571	4023
Sidechain outliers	154315	3826

The table below summarises the geometric issues observed across the polymeric chains and their fit to the map. The red, orange, yellow and green segments of the bar indicate the fraction of residues that contain outliers for ≥ 3 , 2, 1 and 0 types of geometric quality criteria respectively. A grey segment represents the fraction of residues that are not modelled. The numeric value for each fraction is indicated below the corresponding segment, with a dot representing fractions $\leq 5\%$. The upper red bar (where present) indicates the fraction of residues that have poor fit to the EM map (all-atom inclusion $< 40\%$). The numeric value is given above the bar.

Mol	Chain	Length	Quality of chain
1	A	1213	
2	D	133	
3	E	33	
4	B	380	

2 Entry composition

There are 5 unique types of molecules in this entry. The entry contains 12459 atoms, of which 0 are hydrogens and 0 are deuteriums.

In the tables below, the AltConf column contains the number of residues with at least one atom in alternate conformation and the Trace column contains the number of residues modelled with at most 2 atoms.

- Molecule 1 is a protein called DNA polymerase epsilon catalytic subunit A.

Mol	Chain	Residues	Atoms					AltConf	Trace
			Total	C	N	O	S		
1	A	1006	8154	5224	1358	1529	43	0	0

There are 29 discrepancies between the modelled and reference sequences:

Chain	Residue	Modelled	Actual	Comment	Reference
A	-26	MET	-	initiating methionine	UNP P21951
A	-25	LYS	-	expression tag	UNP P21951
A	-24	HIS	-	expression tag	UNP P21951
A	-23	HIS	-	expression tag	UNP P21951
A	-22	HIS	-	expression tag	UNP P21951
A	-21	HIS	-	expression tag	UNP P21951
A	-20	HIS	-	expression tag	UNP P21951
A	-19	HIS	-	expression tag	UNP P21951
A	-18	SER	-	expression tag	UNP P21951
A	-17	ALA	-	expression tag	UNP P21951
A	-16	GLY	-	expression tag	UNP P21951
A	-15	LEU	-	expression tag	UNP P21951
A	-14	GLU	-	expression tag	UNP P21951
A	-13	VAL	-	expression tag	UNP P21951
A	-12	LEU	-	expression tag	UNP P21951
A	-11	PHE	-	expression tag	UNP P21951
A	-10	GLN	-	expression tag	UNP P21951
A	-9	GLY	-	expression tag	UNP P21951
A	-8	PRO	-	expression tag	UNP P21951
A	-7	GLY	-	expression tag	UNP P21951
A	-6	THR	-	expression tag	UNP P21951
A	-5	GLY	-	expression tag	UNP P21951
A	-4	SER	-	expression tag	UNP P21951
A	-3	GLU	-	expression tag	UNP P21951
A	-2	PHE	-	expression tag	UNP P21951
A	-1	GLU	-	expression tag	UNP P21951
A	0	LEU	-	expression tag	UNP P21951
A	290	ALA	ASP	engineered mutation	UNP P21951

Continued on next page...

Continued from previous page...

Chain	Residue	Modelled	Actual	Comment	Reference
A	292	ALA	GLU	engineered mutation	UNP P21951

- Molecule 2 is a protein called Chromosome transmission fidelity protein 8.

Mol	Chain	Residues	Atoms					AltConf	Trace
			Total	C	N	O	S		
2	D	132	1031	653	176	195	7	0	0

- Molecule 3 is a protein called Chromosome transmission fidelity protein 18.

Mol	Chain	Residues	Atoms				AltConf	Trace
			Total	C	N	O		
3	E	26	225	148	40	37	0	0

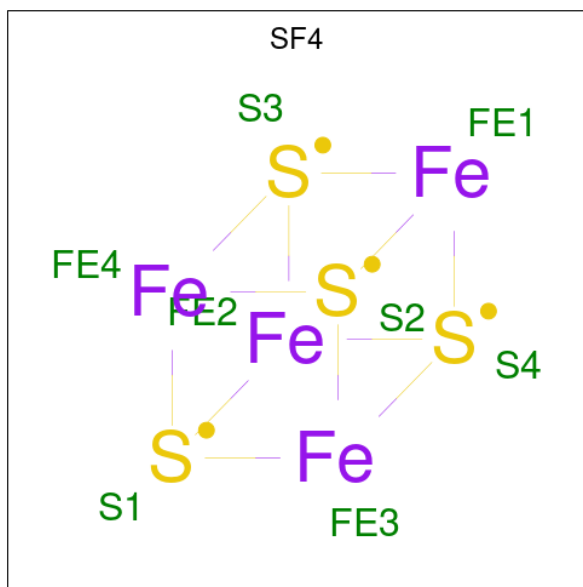
There are 4 discrepancies between the modelled and reference sequences:

Chain	Residue	Modelled	Actual	Comment	Reference
E	709	GLY	-	expression tag	UNP P49956
E	710	ALA	-	expression tag	UNP P49956
E	711	MET	-	expression tag	UNP P49956
E	712	GLY	-	expression tag	UNP P49956

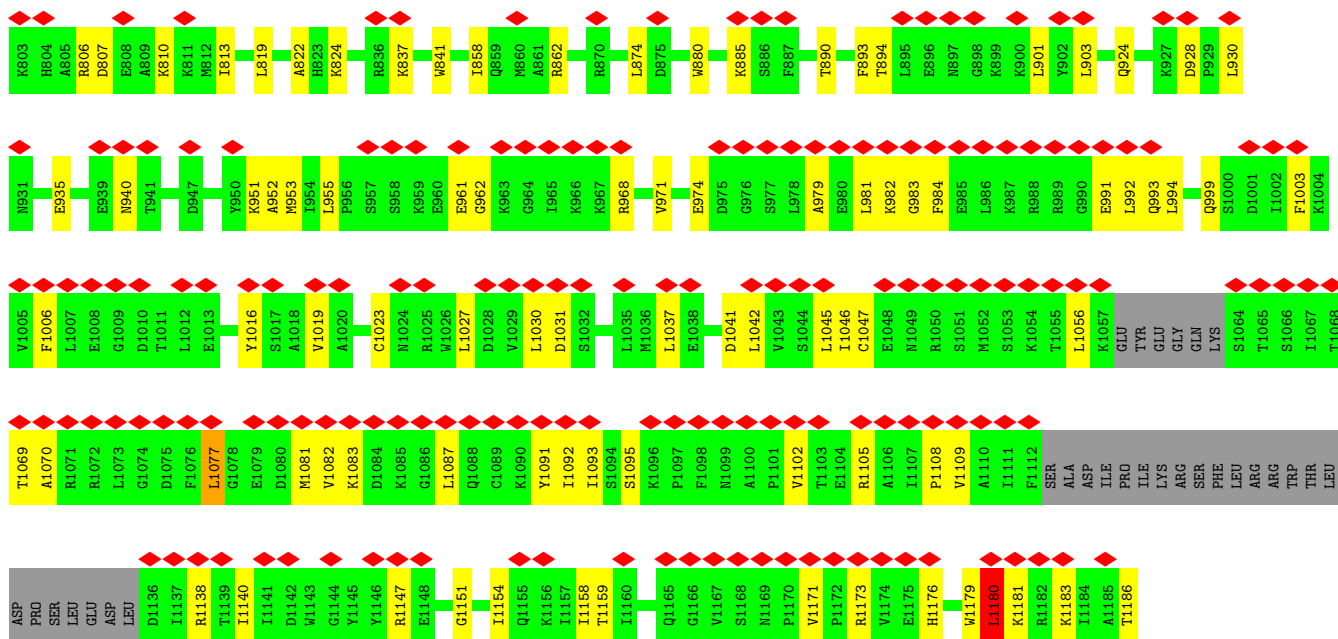
- Molecule 4 is a protein called Sister chromatid cohesion protein DCC1.

Mol	Chain	Residues	Atoms					AltConf	Trace
			Total	C	N	O	S		
4	B	375	3041	1959	505	563	14	0	0

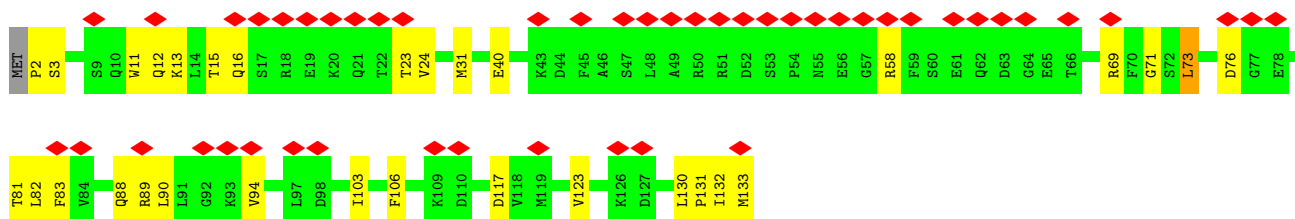
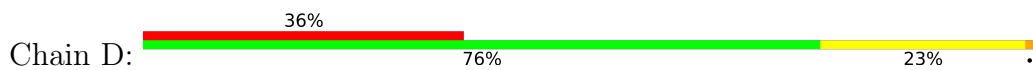
- Molecule 5 is IRON/SULFUR CLUSTER (three-letter code: SF4) (formula: Fe₄S₄).



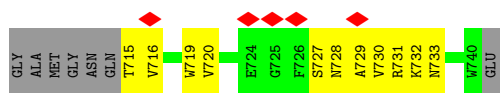
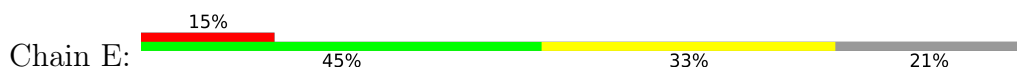
Mol	Chain	Residues	Atoms			AltConf
			Total	Fe	S	
5	A	1	8	4	4	0



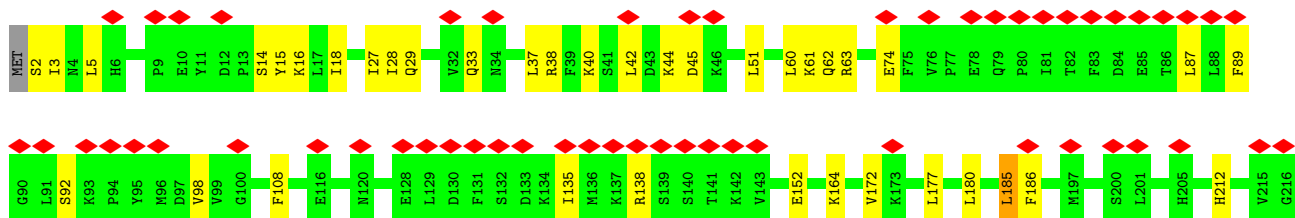
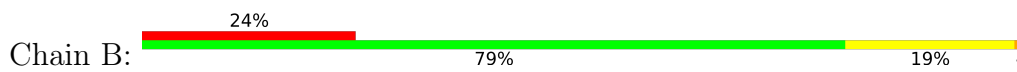
• Molecule 2: Chromosome transmission fidelity protein 8

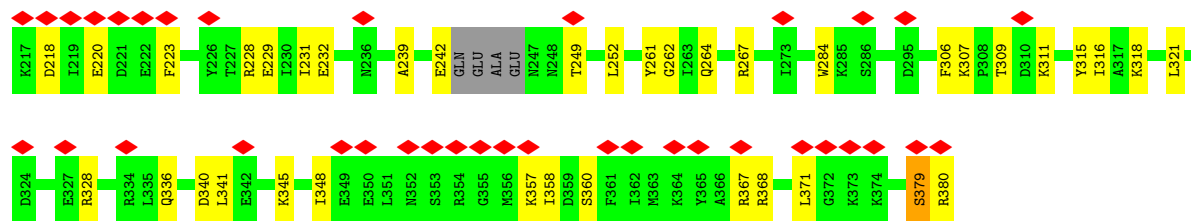


• Molecule 3: Chromosome transmission fidelity protein 18



• Molecule 4: Sister chromatid cohesion protein DCC1





4 Experimental information

Property	Value	Source
EM reconstruction method	SINGLE PARTICLE	Depositor
Imposed symmetry	POINT, C1	Depositor
Number of particles used	93191	Depositor
Resolution determination method	FSC 0.143 CUT-OFF	Depositor
CTF correction method	NONE	Depositor
Microscope	FEI TITAN KRIOS	Depositor
Voltage (kV)	300	Depositor
Electron dose ($e^-/\text{\AA}^2$)	60	Depositor
Minimum defocus (nm)	1400	Depositor
Maximum defocus (nm)	2600	Depositor
Magnification	Not provided	
Image detector	FEI FALCON III (4k x 4k)	Depositor
Maximum map value	0.326	Depositor
Minimum map value	-0.140	Depositor
Average map value	-0.000	Depositor
Map value standard deviation	0.008	Depositor
Recommended contour level	0.07	Depositor
Map size (\AA)	308.415, 308.415, 308.415	wwPDB
Map dimensions	290, 290, 290	wwPDB
Map angles ($^\circ$)	90.0, 90.0, 90.0	wwPDB
Pixel spacing (\AA)	1.0635, 1.0635, 1.0635	Depositor

5 Model quality [i](#)

5.1 Standard geometry [i](#)

Bond lengths and bond angles in the following residue types are not validated in this section: SF4

The Z score for a bond length (or angle) is the number of standard deviations the observed value is removed from the expected value. A bond length (or angle) with $|Z| > 5$ is considered an outlier worth inspection. RMSZ is the root-mean-square of all Z scores of the bond lengths (or angles).

Mol	Chain	Bond lengths		Bond angles	
		RMSZ	# Z >5	RMSZ	# Z >5
1	A	0.43	0/8338	0.82	21/11267 (0.2%)
2	D	0.36	0/1047	0.76	1/1407 (0.1%)
3	E	0.43	0/232	0.61	0/316
4	B	0.41	0/3110	0.73	5/4204 (0.1%)
All	All	0.42	0/12727	0.79	27/17194 (0.2%)

Chiral center outliers are detected by calculating the chiral volume of a chiral center and verifying if the center is modelled as a planar moiety or with the opposite hand. A planarity outlier is detected by checking planarity of atoms in a peptide group, atoms in a mainchain group or atoms of a sidechain that are expected to be planar.

Mol	Chain	#Chirality outliers	#Planarity outliers
4	B	0	1

There are no bond length outliers.

All (27) bond angle outliers are listed below:

Mol	Chain	Res	Type	Atoms	Z	Observed(°)	Ideal(°)
1	A	1045	LEU	CA-CB-CG	10.61	139.70	115.30
4	B	87	LEU	CA-CB-CG	9.01	136.03	115.30
4	B	185	LEU	CA-CB-CG	8.66	135.22	115.30
1	A	454	LEU	CA-CB-CG	7.34	132.19	115.30
2	D	73	LEU	CA-CB-CG	7.26	132.00	115.30
1	A	1180	LEU	CA-CB-CG	7.14	131.71	115.30
1	A	930	LEU	CA-CB-CG	7.13	131.70	115.30
1	A	623	GLU	CA-CB-CG	6.99	128.77	113.40
1	A	577	ASP	CB-CG-OD1	6.88	124.49	118.30
1	A	191	LEU	CA-CB-CG	6.72	130.75	115.30
1	A	1027	LEU	CA-CB-CG	6.32	129.84	115.30
4	B	42	LEU	CA-CB-CG	6.11	129.36	115.30

Continued on next page...

Continued from previous page...

Mol	Chain	Res	Type	Atoms	Z	Observed(°)	Ideal(°)
1	A	1077	LEU	C-N-CA	5.95	134.80	122.30
1	A	664	ASP	CB-CG-OD1	5.94	123.65	118.30
1	A	65	ASP	CB-CG-OD1	5.87	123.58	118.30
4	B	37	LEU	CA-CB-CG	5.86	128.77	115.30
1	A	407	ASP	CB-CG-OD1	5.67	123.40	118.30
4	B	371	LEU	CA-CB-CG	5.66	128.31	115.30
1	A	585	LEU	CA-CB-CG	5.55	128.07	115.30
1	A	531	LEU	CA-CB-CG	5.51	127.98	115.30
1	A	1041	ASP	CB-CG-OD1	5.46	123.22	118.30
1	A	874	LEU	CA-CB-CG	5.36	127.63	115.30
1	A	1087	LEU	CA-CB-CG	5.22	127.31	115.30
1	A	1042	LEU	CA-CB-CG	5.19	127.23	115.30
1	A	928	ASP	CB-CG-OD1	5.09	122.88	118.30
1	A	531	LEU	CB-CG-CD1	5.07	119.62	111.00
1	A	455	ASP	CB-CG-OD1	5.02	122.81	118.30

There are no chirality outliers.

All (1) planarity outliers are listed below:

Mol	Chain	Res	Type	Group
4	B	379	SER	Peptide

5.2 Too-close contacts

In the following table, the Non-H and H(model) columns list the number of non-hydrogen atoms and hydrogen atoms in the chain respectively. The H(added) column lists the number of hydrogen atoms added and optimized by MolProbity. The Clashes column lists the number of clashes within the asymmetric unit, whereas Symm-Clashes lists symmetry-related clashes.

Mol	Chain	Non-H	H(model)	H(added)	Clashes	Symm-Clashes
1	A	8154	0	8067	116	0
2	D	1031	0	1044	26	0
3	E	225	0	220	10	0
4	B	3041	0	3052	53	0
5	A	8	0	0	1	0
All	All	12459	0	12383	184	0

The all-atom clashscore is defined as the number of clashes found per 1000 atoms (including hydrogen atoms). The all-atom clashscore for this structure is 7.

All (184) close contacts within the same asymmetric unit are listed below, sorted by their clash magnitude.

Atom-1	Atom-2	Interatomic distance (Å)	Clash overlap (Å)
4:B:2:SER:N	4:B:92:SER:HG	1.79	0.80
1:A:880:TRP:HB3	1:A:953:MET:HE1	1.69	0.72
4:B:306:PHE:HB2	4:B:336:GLN:HE21	1.53	0.71
2:D:103:ILE:HD11	4:B:15:TYR:HB3	1.75	0.68
1:A:338:THR:HG22	1:A:345:GLY:H	1.62	0.65
1:A:656:PRO:HG2	1:A:841:TRP:HB3	1.80	0.64
1:A:968:ARG:HA	1:A:982:LYS:O	1.98	0.64
3:E:728:ASN:HD21	4:B:63:ARG:HD3	1.63	0.63
1:A:968:ARG:HG2	1:A:983:GLY:HA3	1.81	0.63
1:A:1147:ARG:O	1:A:1151:GLY:N	2.30	0.63
1:A:440:LYS:NZ	1:A:451:PRO:O	2.32	0.62
2:D:88:GLN:HE22	3:E:720:VAL:H	1.48	0.62
1:A:1030:LEU:HD12	1:A:1147:ARG:HH11	1.64	0.62
2:D:15:THR:HG21	4:B:29:GLN:HE22	1.64	0.61
1:A:807:ASP:HA	1:A:810:LYS:HD2	1.82	0.61
1:A:1102:VAL:HG13	1:A:1105:ARG:HE	1.66	0.61
4:B:321:LEU:HB3	4:B:328:ARG:HD2	1.81	0.61
1:A:1037:LEU:O	1:A:1138:ARG:NH2	2.34	0.60
1:A:802:ASP:OD1	1:A:810:LYS:NZ	2.31	0.60
1:A:773:THR:O	1:A:777:PHE:HB2	2.02	0.60
1:A:1154:ILE:HG21	1:A:1171:VAL:HG21	1.82	0.60
2:D:12:GLN:NE2	4:B:28:ILE:O	2.36	0.59
1:A:407:ASP:OD2	1:A:413:LYS:NZ	2.34	0.58
4:B:262:GLY:HA2	4:B:284:TRP:HE1	1.69	0.58
2:D:89:ARG:NH1	2:D:131:PRO:O	2.36	0.58
3:E:715:THR:HG23	3:E:716:VAL:HG23	1.86	0.57
1:A:1092:ILE:HG22	1:A:1109:VAL:HG11	1.85	0.57
1:A:452:ILE:HG22	3:E:727:SER:HB3	1.86	0.57
1:A:123:ASP:OD1	1:A:127:GLY:N	2.34	0.56
1:A:563:ALA:HA	1:A:955:LEU:HB2	1.88	0.56
1:A:609:ASN:HD21	1:A:893:PHE:HA	1.70	0.56
4:B:328:ARG:HH21	4:B:348:ILE:HA	1.70	0.56
3:E:731:ARG:HH21	4:B:61:LYS:HG3	1.69	0.56
3:E:729:ALA:O	4:B:63:ARG:NH1	2.38	0.55
4:B:40:LYS:NZ	4:B:152:GLU:O	2.40	0.55
1:A:65:ASP:OD2	1:A:67:LYS:NZ	2.39	0.55
1:A:247:VAL:HG11	1:A:252:ARG:HH21	1.71	0.55
4:B:367:ARG:HD2	4:B:380:ARG:HG2	1.90	0.54
1:A:971:VAL:HG23	1:A:979:ALA:HB3	1.89	0.54
1:A:1070:ALA:HB1	1:A:1082:VAL:HG11	1.89	0.54
1:A:567:ARG:NH1	1:A:1006:PHE:O	2.39	0.54
1:A:893:PHE:HB2	1:A:901:LEU:HG	1.89	0.54

Continued on next page...

Continued from previous page...

Atom-1	Atom-2	Interatomic distance (Å)	Clash overlap (Å)
2:D:89:ARG:NH1	2:D:133:MET:OXT	2.40	0.54
1:A:135:TYR:O	1:A:249:TYR:OH	2.26	0.54
1:A:781:ARG:HE	1:A:824:LYS:HB2	1.73	0.54
1:A:332:ILE:HD11	1:A:467:PRO:HB2	1.90	0.54
1:A:653:ARG:NH1	1:A:764:GLN:O	2.41	0.53
1:A:64:PHE:HB2	1:A:270:GLN:HG2	1.90	0.53
1:A:125:GLU:HA	4:B:368:ARG:HE	1.74	0.53
1:A:1031:ASP:OD1	1:A:1173:ARG:NH1	2.41	0.53
1:A:802:ASP:HA	1:A:806:ARG:HE	1.74	0.53
1:A:164:LEU:HD21	1:A:167:LEU:HG	1.90	0.53
2:D:89:ARG:N	2:D:130:LEU:O	2.41	0.52
4:B:27:ILE:HG23	4:B:33:GLN:HE22	1.73	0.52
1:A:595:SER:O	1:A:600:ASN:ND2	2.38	0.52
1:A:669:ASP:OD1	1:A:669:ASP:N	2.38	0.52
1:A:678:ALA:HB1	1:A:761:ILE:HB	1.92	0.52
1:A:951:LYS:HB2	1:A:974:GLU:HA	1.90	0.52
1:A:962:GLY:HA2	1:A:1183:LYS:HZ3	1.75	0.51
4:B:2:SER:N	4:B:92:SER:OG	2.43	0.51
4:B:218:ASP:OD1	4:B:218:ASP:N	2.44	0.51
4:B:309:THR:HG23	4:B:311:LYS:H	1.75	0.51
1:A:810:LYS:HA	1:A:813:ILE:HD12	1.93	0.51
1:A:981:LEU:HD21	1:A:984:PHE:HB2	1.93	0.51
1:A:434:GLN:HA	1:A:437:GLN:HG2	1.93	0.51
2:D:23:THR:OG1	2:D:24:VAL:N	2.43	0.51
2:D:106:PHE:N	4:B:14:SER:OG	2.45	0.50
1:A:154:GLU:O	1:A:157:LYS:HB2	2.10	0.50
2:D:2:PRO:HG3	4:B:44:LYS:HG2	1.94	0.50
1:A:1093:ILE:HD12	1:A:1105:ARG:HB3	1.94	0.49
1:A:1016:TYR:HA	1:A:1019:VAL:HG12	1.94	0.49
1:A:1069:THR:HG23	1:A:1108:PRO:HD3	1.93	0.49
1:A:323:THR:HB	1:A:328:ILE:HG21	1.94	0.49
1:A:70:ASP:OD1	1:A:70:ASP:N	2.42	0.49
1:A:286:VAL:HA	1:A:373:VAL:HG23	1.93	0.49
1:A:799:ASP:OD1	1:A:799:ASP:N	2.38	0.49
1:A:890:THR:HA	1:A:903:LEU:O	2.13	0.49
1:A:444:GLN:HG2	1:A:450:ASN:HD22	1.77	0.49
4:B:307:LYS:HZ1	4:B:340:ASP:H	1.58	0.49
2:D:71:GLY:CA	2:D:83:PHE:O	2.61	0.49
2:D:3:SER:HB2	4:B:38:ARG:HE	1.78	0.48
4:B:18:ILE:HG22	4:B:108:PHE:HB2	1.95	0.48
1:A:664:ASP:HB2	5:A:1401:SF4:S1	2.53	0.48

Continued on next page...

Continued from previous page...

Atom-1	Atom-2	Interatomic distance (Å)	Clash overlap (Å)
1:A:32:LEU:HG	1:A:35:GLN:HB3	1.96	0.48
4:B:307:LYS:H	4:B:336:GLN:NE2	2.12	0.48
1:A:355:GLU:OE1	1:A:394:HIS:NE2	2.41	0.47
1:A:651:THR:HG22	1:A:940:ASN:HA	1.96	0.47
1:A:660:LYS:HD2	1:A:761:ILE:HD11	1.95	0.47
1:A:777:PHE:HA	1:A:780:ARG:HG2	1.96	0.47
2:D:106:PHE:HE2	4:B:16:LYS:HD2	1.76	0.47
1:A:1181:LYS:O	1:A:1186:THR:OG1	2.33	0.47
1:A:309:MET:HG3	1:A:310:MET:HG3	1.95	0.47
2:D:40:GLU:N	3:E:719:TRP:O	2.45	0.47
4:B:239:ALA:HB2	4:B:252:LEU:HD23	1.95	0.47
1:A:35:GLN:HE21	1:A:39:ASN:HD21	1.62	0.47
1:A:455:ASP:HB3	1:A:458:LEU:HD13	1.97	0.47
1:A:539:ILE:HD11	1:A:837:LYS:HD3	1.96	0.46
1:A:620:LYS:HA	1:A:623:GLU:HG3	1.96	0.46
1:A:992:LEU:HG	1:A:994:LEU:HB3	1.98	0.46
1:A:1046:ILE:HB	1:A:1092:ILE:HD13	1.96	0.46
1:A:1077:LEU:HB3	1:A:1081:MET:HG3	1.97	0.46
2:D:13:LYS:O	2:D:16:GLN:NE2	2.41	0.46
3:E:733:ASN:OD1	4:B:61:LYS:NZ	2.34	0.46
4:B:212:HIS:HB2	4:B:231:ILE:HG13	1.98	0.46
4:B:186:PHE:CG	4:B:264:GLN:HG3	2.51	0.46
1:A:496:LEU:HD13	1:A:822:ALA:HB1	1.98	0.46
2:D:11:TRP:NE1	2:D:117:ASP:OD1	2.42	0.46
1:A:792:LYS:HA	1:A:795:LEU:HD23	1.98	0.45
1:A:35:GLN:HE21	1:A:39:ASN:ND2	2.15	0.45
1:A:578:PRO:HG3	1:A:628:ASN:HD22	1.82	0.45
1:A:1091:TYR:HA	1:A:1109:VAL:HG22	1.97	0.45
1:A:673:PRO:HG2	1:A:677:CYS:HA	1.97	0.45
1:A:806:ARG:HG3	1:A:810:LYS:HZ1	1.82	0.45
2:D:73:LEU:HB3	4:B:5:LEU:HD11	1.98	0.45
1:A:313:TYR:OH	1:A:365:HIS:ND1	2.36	0.44
1:A:665:CYS:SG	1:A:676:THR:OG1	2.73	0.44
1:A:566:PHE:O	1:A:952:ALA:HA	2.17	0.44
1:A:167:LEU:HD23	1:A:191:LEU:HA	1.99	0.44
1:A:608:THR:HB	1:A:894:THR:HG23	2.00	0.44
4:B:180:LEU:HA	4:B:180:LEU:HD13	1.75	0.44
1:A:1176:HIS:HB3	1:A:1180:LEU:HD11	1.99	0.44
2:D:73:LEU:HD23	4:B:5:LEU:HD21	1.98	0.44
4:B:220:GLU:HG3	4:B:223:PHE:HB2	2.00	0.44
1:A:337:TYR:HB2	3:E:730:VAL:HG12	1.99	0.44

Continued on next page...

Continued from previous page...

Atom-1	Atom-2	Interatomic distance (Å)	Clash overlap (Å)
1:A:807:ASP:OD1	1:A:810:LYS:NZ	2.50	0.44
4:B:261:TYR:OH	4:B:284:TRP:O	2.22	0.44
1:A:141:ILE:HG22	1:A:189:ILE:HB	1.99	0.43
1:A:581:ILE:HG21	1:A:625:LYS:HG3	2.01	0.43
2:D:89:ARG:HB2	2:D:132:ILE:HA	2.00	0.43
4:B:164:LYS:HA	4:B:164:LYS:HD2	1.76	0.43
1:A:999:GLN:HE21	1:A:1003:PHE:HE2	1.66	0.43
2:D:31:MET:HE2	2:D:123:VAL:HG22	1.99	0.43
1:A:581:ILE:HD11	1:A:621:LEU:HB2	2.01	0.43
1:A:794:ASN:HA	1:A:797:LYS:HG2	2.01	0.43
1:A:1095:SER:N	1:A:1140:ILE:O	2.38	0.43
2:D:94:VAL:HG22	2:D:123:VAL:HG12	2.00	0.43
4:B:242:GLU:N	4:B:249:THR:O	2.46	0.43
4:B:316:ILE:HD11	4:B:321:LEU:HD21	2.01	0.43
1:A:174:ASP:OD1	1:A:174:ASP:N	2.51	0.43
1:A:672:ARG:HH12	1:A:765:ARG:HD2	1.84	0.43
2:D:133:MET:HA	4:B:89:PHE:HE2	1.81	0.43
4:B:318:LYS:HE3	4:B:318:LYS:HB2	1.87	0.43
1:A:593:LYS:HG3	1:A:604:VAL:HG11	2.00	0.42
2:D:58:ARG:HA	2:D:69:ARG:HE	1.85	0.42
1:A:329:SER:OG	1:A:464:PHE:O	2.33	0.42
1:A:858:ILE:HD12	1:A:858:ILE:HA	1.80	0.42
1:A:668:CYS:HB2	1:A:765:ARG:HH12	1.85	0.42
4:B:345:LYS:HG2	4:B:358:ILE:HG21	2.01	0.42
1:A:993:GLN:HE22	1:A:1047:CYS:HB2	1.85	0.42
2:D:73:LEU:HD11	4:B:3:ILE:HD12	2.01	0.42
3:E:732:LYS:HB2	4:B:62:GLN:HG3	2.00	0.42
1:A:160:LEU:HD12	1:A:163:CYS:HB3	2.01	0.42
1:A:313:TYR:HH	1:A:365:HIS:HD1	1.45	0.42
1:A:138:TYR:CG	1:A:190:LYS:HE3	2.55	0.42
1:A:668:CYS:HB2	1:A:765:ARG:NH1	2.35	0.42
1:A:991:GLU:N	1:A:991:GLU:OE2	2.53	0.42
1:A:1154:ILE:HG22	1:A:1159:THR:HG23	2.02	0.42
4:B:357:LYS:O	4:B:360:SER:OG	2.25	0.42
1:A:581:ILE:HD12	1:A:581:ILE:HA	1.94	0.41
1:A:1154:ILE:HG23	1:A:1158:ILE:HB	2.01	0.41
1:A:862:ARG:HH11	1:A:862:ARG:HD3	1.70	0.41
2:D:82:LEU:HD23	2:D:90:LEU:HD12	2.02	0.41
1:A:797:LYS:HB3	1:A:797:LYS:HE2	1.82	0.41
4:B:45:ASP:OD1	4:B:45:ASP:N	2.54	0.41
4:B:74:GLU:HA	4:B:98:VAL:HG12	2.01	0.41

Continued on next page...

Continued from previous page...

Atom-1	Atom-2	Interatomic distance (Å)	Clash overlap (Å)
1:A:72:ILE:HA	1:A:73:PRO:HD3	1.97	0.41
4:B:51:LEU:HB2	4:B:60:LEU:HD11	2.02	0.41
1:A:83:HIS:NE2	1:A:415:SER:O	2.53	0.41
1:A:1083:LYS:HA	1:A:1083:LYS:HD3	1.91	0.41
1:A:641:VAL:H	1:A:641:VAL:HG12	1.60	0.41
1:A:1056:LEU:HD13	1:A:1070:ALA:HB3	2.02	0.41
4:B:135:ILE:HD12	4:B:138:ARG:HH11	1.85	0.41
1:A:500:ILE:HD13	1:A:515:LEU:HD23	2.02	0.41
4:B:228:ARG:O	4:B:232:GLU:HG3	2.20	0.41
4:B:267:ARG:HG2	4:B:315:TYR:CZ	2.56	0.41
4:B:311:LYS:HE3	4:B:311:LYS:HB2	1.91	0.41
4:B:341:LEU:HG	4:B:345:LYS:HE2	2.03	0.41
1:A:324:ASN:HB2	1:A:358:LEU:HD13	2.01	0.40
1:A:924:GLN:HA	1:A:935:GLU:O	2.22	0.40
2:D:11:TRP:CD1	2:D:117:ASP:HA	2.56	0.40
4:B:172:VAL:HG13	4:B:229:GLU:HG2	2.02	0.40
4:B:341:LEU:HD12	4:B:341:LEU:HA	1.86	0.40
1:A:961:GLU:HA	1:A:1179:TRP:CE3	2.56	0.40
1:A:993:GLN:NE2	1:A:1047:CYS:O	2.55	0.40

There are no symmetry-related clashes.

5.3 Torsion angles [i](#)

5.3.1 Protein backbone [i](#)

In the following table, the Percentiles column shows the percent Ramachandran outliers of the chain as a percentile score with respect to all PDB entries followed by that with respect to all EM entries.

The Analysed column shows the number of residues for which the backbone conformation was analysed, and the total number of residues.

Mol	Chain	Analysed	Favoured	Allowed	Outliers	Percentiles
1	A	992/1213 (82%)	943 (95%)	48 (5%)	1 (0%)	51 85
2	D	130/133 (98%)	127 (98%)	3 (2%)	0	100 100
3	E	24/33 (73%)	22 (92%)	2 (8%)	0	100 100
4	B	371/380 (98%)	352 (95%)	18 (5%)	1 (0%)	41 76
All	All	1517/1759 (86%)	1444 (95%)	71 (5%)	2 (0%)	54 85

All (2) Ramachandran outliers are listed below:

Mol	Chain	Res	Type
4	B	379	SER
1	A	798	ILE

5.3.2 Protein sidechains [i](#)

In the following table, the Percentiles column shows the percent sidechain outliers of the chain as a percentile score with respect to all PDB entries followed by that with respect to all EM entries.

The Analysed column shows the number of residues for which the sidechain conformation was analysed, and the total number of residues.

Mol	Chain	Analysed	Rotameric	Outliers	Percentiles	
1	A	903/1084 (83%)	889 (98%)	14 (2%)	62	79
2	D	114/120 (95%)	112 (98%)	2 (2%)	59	76
3	E	24/28 (86%)	24 (100%)	0	100	100
4	B	343/352 (97%)	341 (99%)	2 (1%)	86	92
All	All	1384/1584 (87%)	1366 (99%)	18 (1%)	70	82

All (18) residues with a non-rotameric sidechain are listed below:

Mol	Chain	Res	Type
1	A	38	LEU
1	A	41	SER
1	A	314	MET
1	A	393	ILE
1	A	496	LEU
1	A	531	LEU
1	A	623	GLU
1	A	641	VAL
1	A	644	MET
1	A	795	LEU
1	A	819	LEU
1	A	885	LYS
1	A	1023	CYS
1	A	1180	LEU
2	D	76	ASP
2	D	81	THR
4	B	177	LEU
4	B	185	LEU

Sometimes sidechains can be flipped to improve hydrogen bonding and reduce clashes. All (10) such sidechains are listed below:

Mol	Chain	Res	Type
1	A	35	GLN
1	A	437	GLN
1	A	450	ASN
1	A	794	ASN
1	A	973	ASN
1	A	993	GLN
1	A	997	ASN
1	A	999	GLN
2	D	88	GLN
4	B	29	GLN

5.3.3 RNA [i](#)

There are no RNA molecules in this entry.

5.4 Non-standard residues in protein, DNA, RNA chains [i](#)

There are no non-standard protein/DNA/RNA residues in this entry.

5.5 Carbohydrates [i](#)

There are no monosaccharides in this entry.

5.6 Ligand geometry [i](#)

1 ligand is modelled in this entry.

In the following table, the Counts columns list the number of bonds (or angles) for which Mogul statistics could be retrieved, the number of bonds (or angles) that are observed in the model and the number of bonds (or angles) that are defined in the Chemical Component Dictionary. The Link column lists molecule types, if any, to which the group is linked. The Z score for a bond length (or angle) is the number of standard deviations the observed value is removed from the expected value. A bond length (or angle) with $|Z| > 2$ is considered an outlier worth inspection. RMSZ is the root-mean-square of all Z scores of the bond lengths (or angles).

Mol	Type	Chain	Res	Link	Bond lengths			Bond angles		
					Counts	RMSZ	$\# Z > 2$	Counts	RMSZ	$\# Z > 2$
5	SF4	A	1401	1	0,12,12	-	-	-		

In the following table, the Chirals column lists the number of chiral outliers, the number of chiral centers analysed, the number of these observed in the model and the number defined in the Chemical Component Dictionary. Similar counts are reported in the Torsion and Rings columns. '-' means no outliers of that kind were identified.

Mol	Type	Chain	Res	Link	Chirals	Torsions	Rings
5	SF4	A	1401	1	-	-	0/6/5/5

There are no bond length outliers.

There are no bond angle outliers.

There are no chirality outliers.

There are no torsion outliers.

There are no ring outliers.

1 monomer is involved in 1 short contact:

Mol	Chain	Res	Type	Clashes	Symm-Clashes
5	A	1401	SF4	1	0

5.7 Other polymers [i](#)

There are no such residues in this entry.

5.8 Polymer linkage issues [i](#)

There are no chain breaks in this entry.

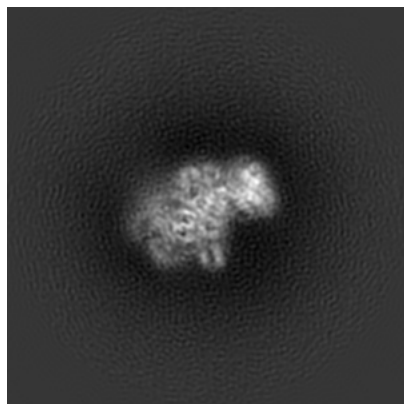
6 Map visualisation [i](#)

This section contains visualisations of the EMDB entry EMD-10088. These allow visual inspection of the internal detail of the map and identification of artifacts.

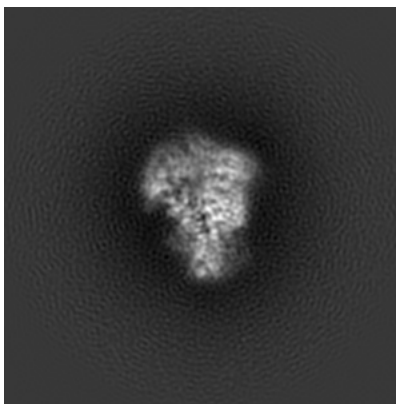
Images derived from a raw map, generated by summing the deposited half-maps, are presented below the corresponding image components of the primary map to allow further visual inspection and comparison with those of the primary map.

6.1 Orthogonal projections [i](#)

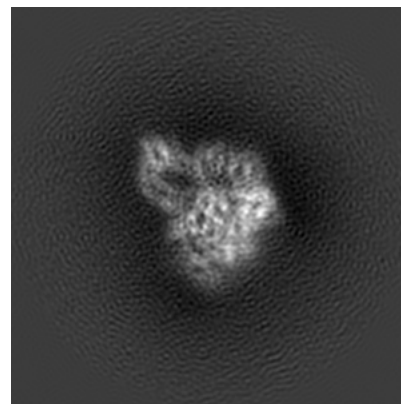
6.1.1 Primary map



X

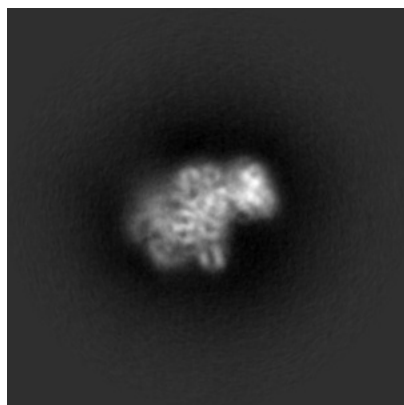


Y

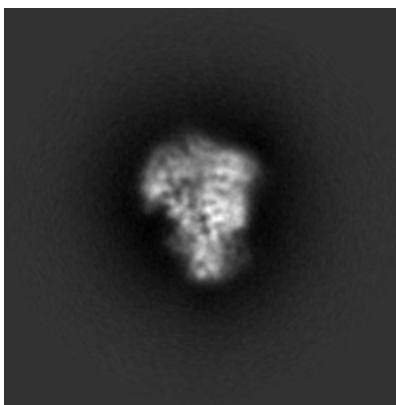


Z

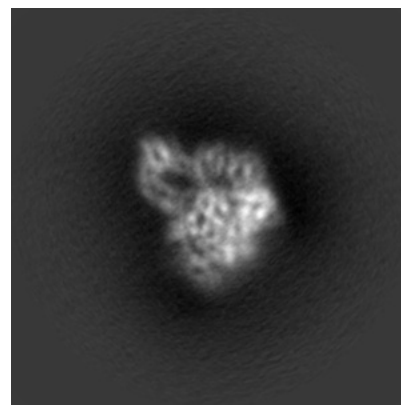
6.1.2 Raw map



X



Y

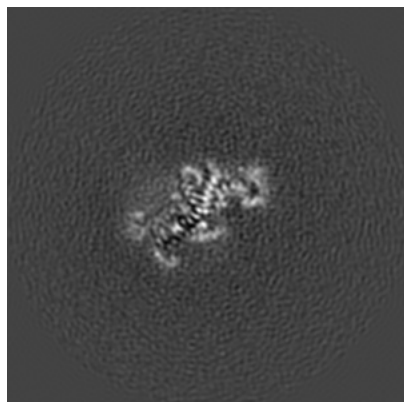


Z

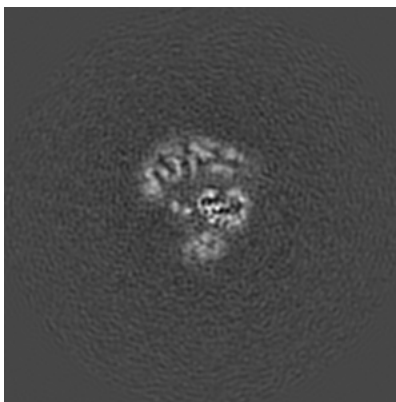
The images above show the map projected in three orthogonal directions.

6.2 Central slices [i](#)

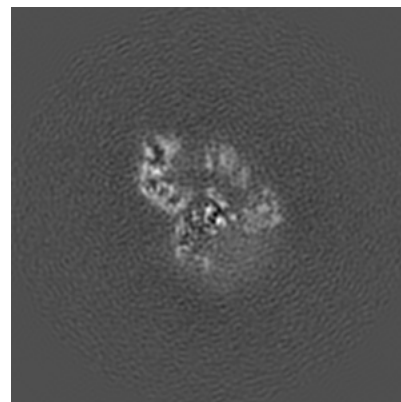
6.2.1 Primary map



X Index: 145

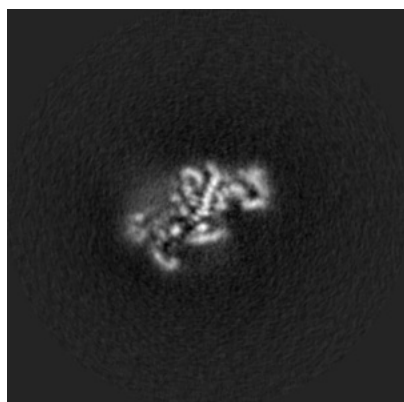


Y Index: 145

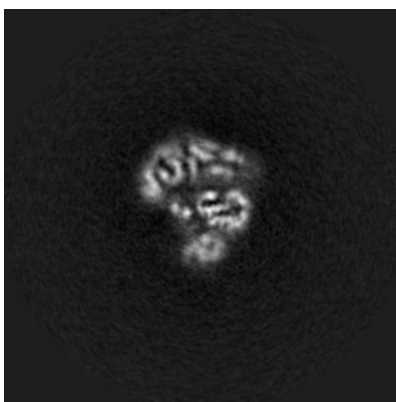


Z Index: 145

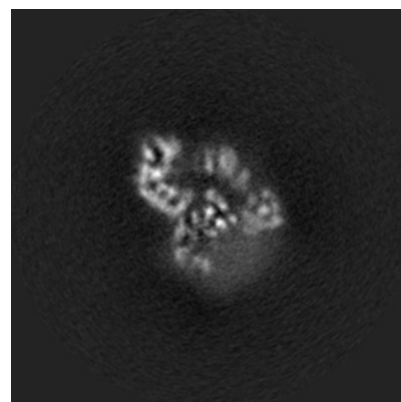
6.2.2 Raw map



X Index: 145



Y Index: 145

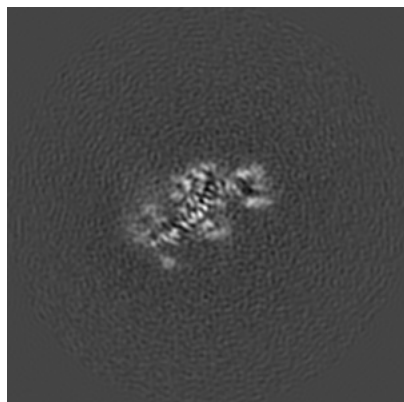


Z Index: 145

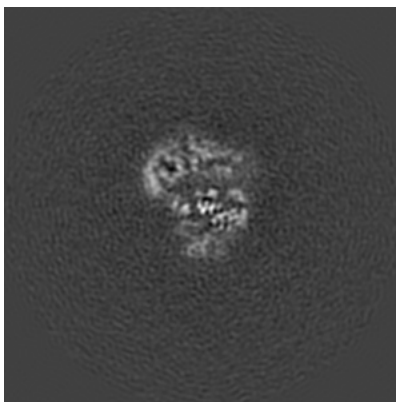
The images above show central slices of the map in three orthogonal directions.

6.3 Largest variance slices [i](#)

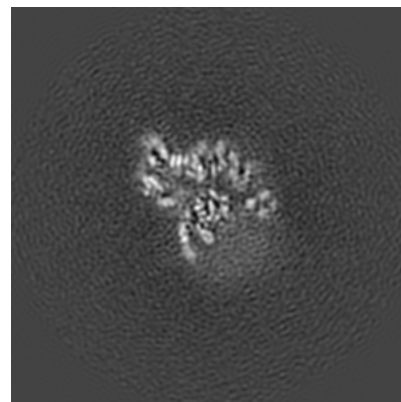
6.3.1 Primary map



X Index: 142

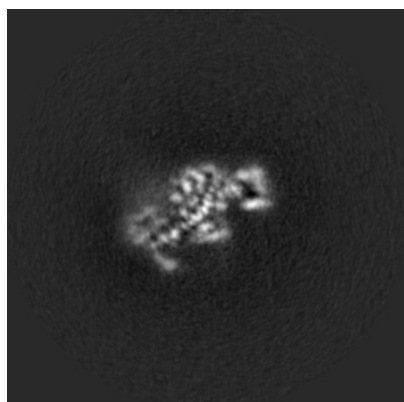


Y Index: 143

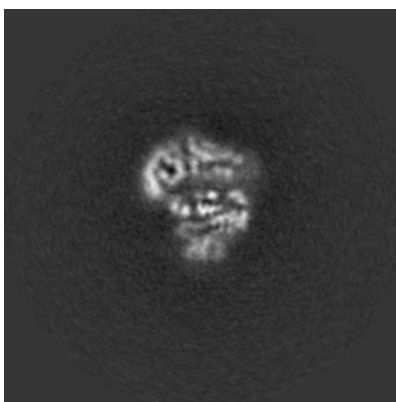


Z Index: 152

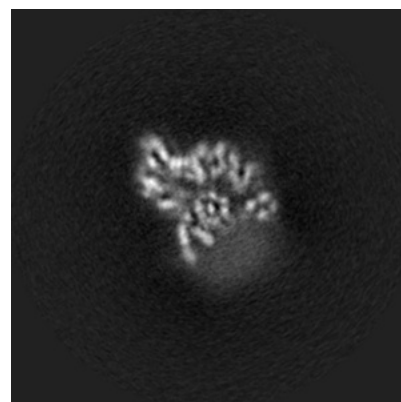
6.3.2 Raw map



X Index: 143



Y Index: 143

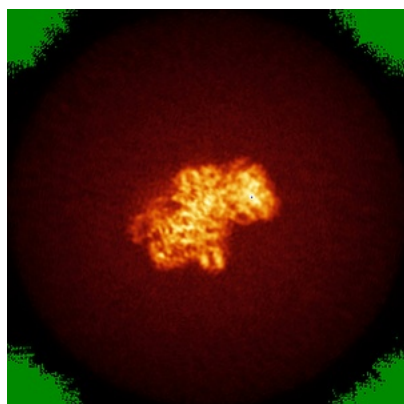


Z Index: 152

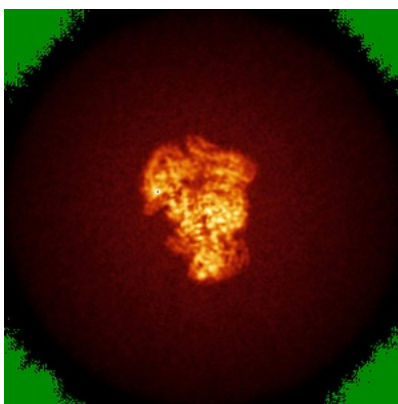
The images above show the largest variance slices of the map in three orthogonal directions.

6.4 Orthogonal standard-deviation projections (False-color) [i](#)

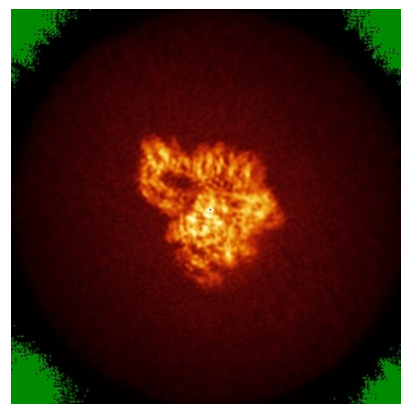
6.4.1 Primary map



X



Y



Z

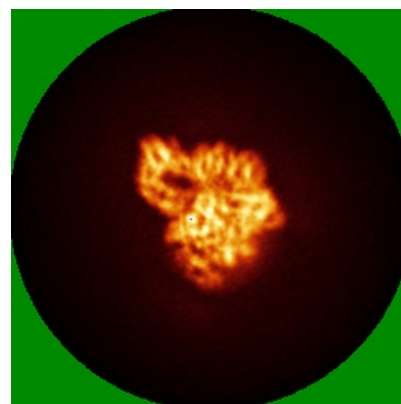
6.4.2 Raw map



X



Y



Z

The images above show the map standard deviation projections with false color in three orthogonal directions. Minimum values are shown in green, max in blue, and dark to light orange shades represent small to large values respectively.

6.5 Orthogonal surface views [i](#)

6.5.1 Primary map



The images above show the 3D surface view of the map at the recommended contour level 0.07. These images, in conjunction with the slice images, may facilitate assessment of whether an appropriate contour level has been provided.

6.5.2 Raw map



These images show the 3D surface of the raw map. The raw map's contour level was selected so that its surface encloses the same volume as the primary map does at its recommended contour level.

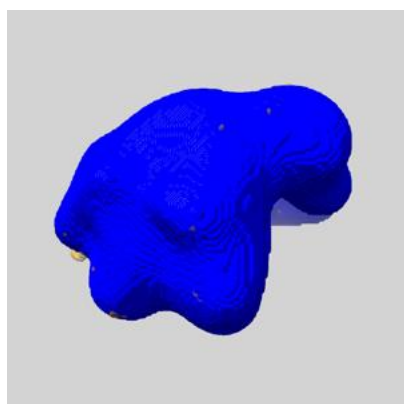
6.6 Mask visualisation [i](#)

This section shows the 3D surface view of the primary map at 50% transparency overlaid with the specified mask at 0% transparency

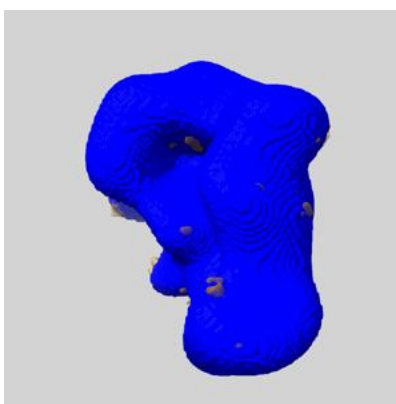
A mask typically either:

- Encompasses the whole structure
- Separates out a domain, a functional unit, a monomer or an area of interest from a larger structure

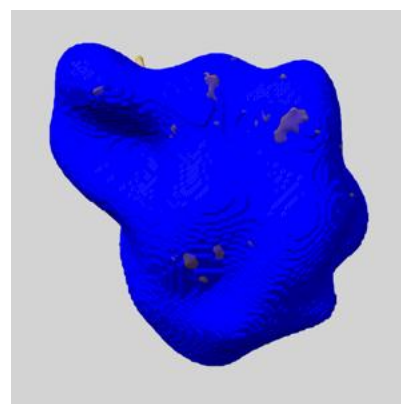
6.6.1 emd_10088_msk_1.map [i](#)



X



Y

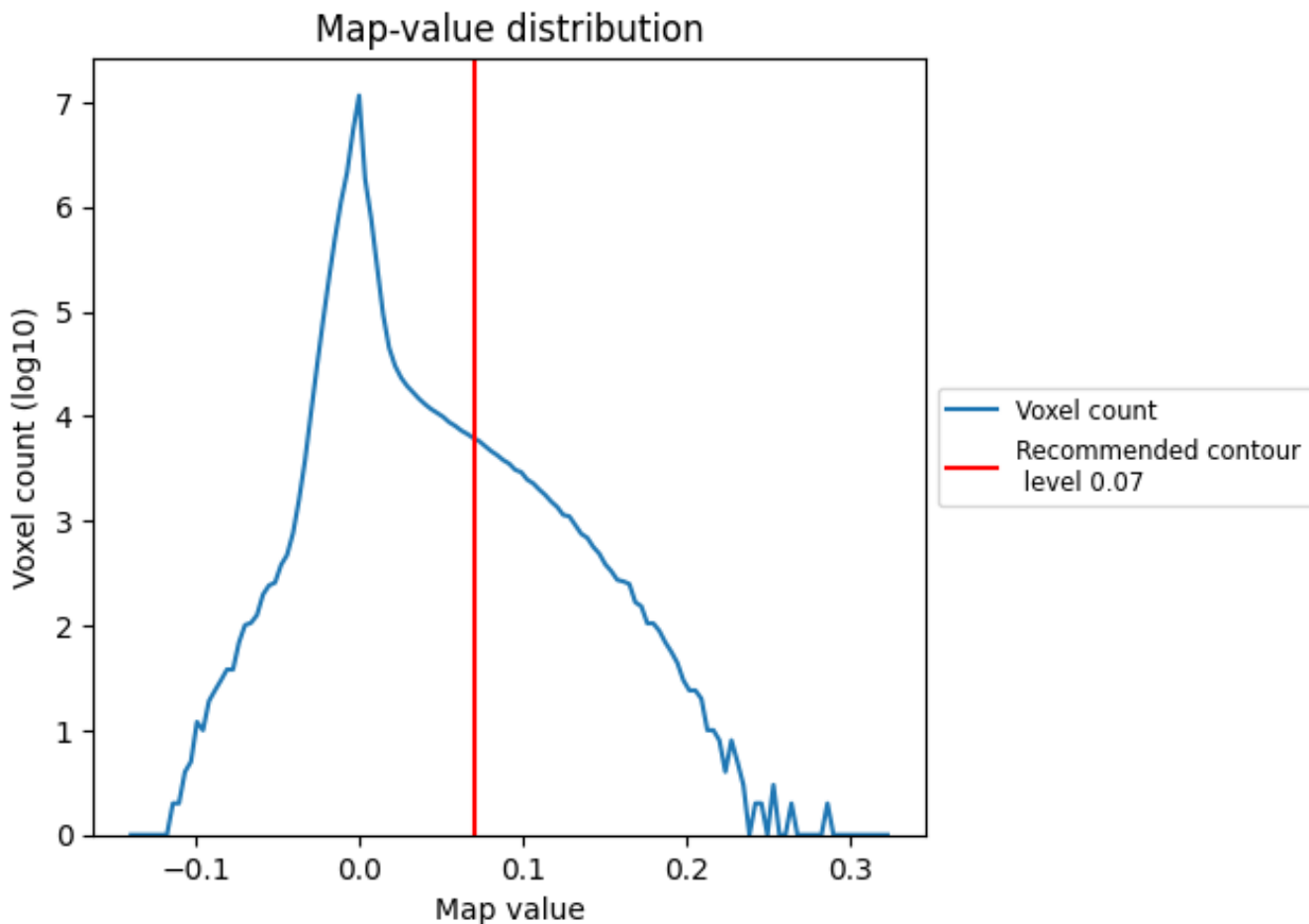


Z

7 Map analysis [i](#)

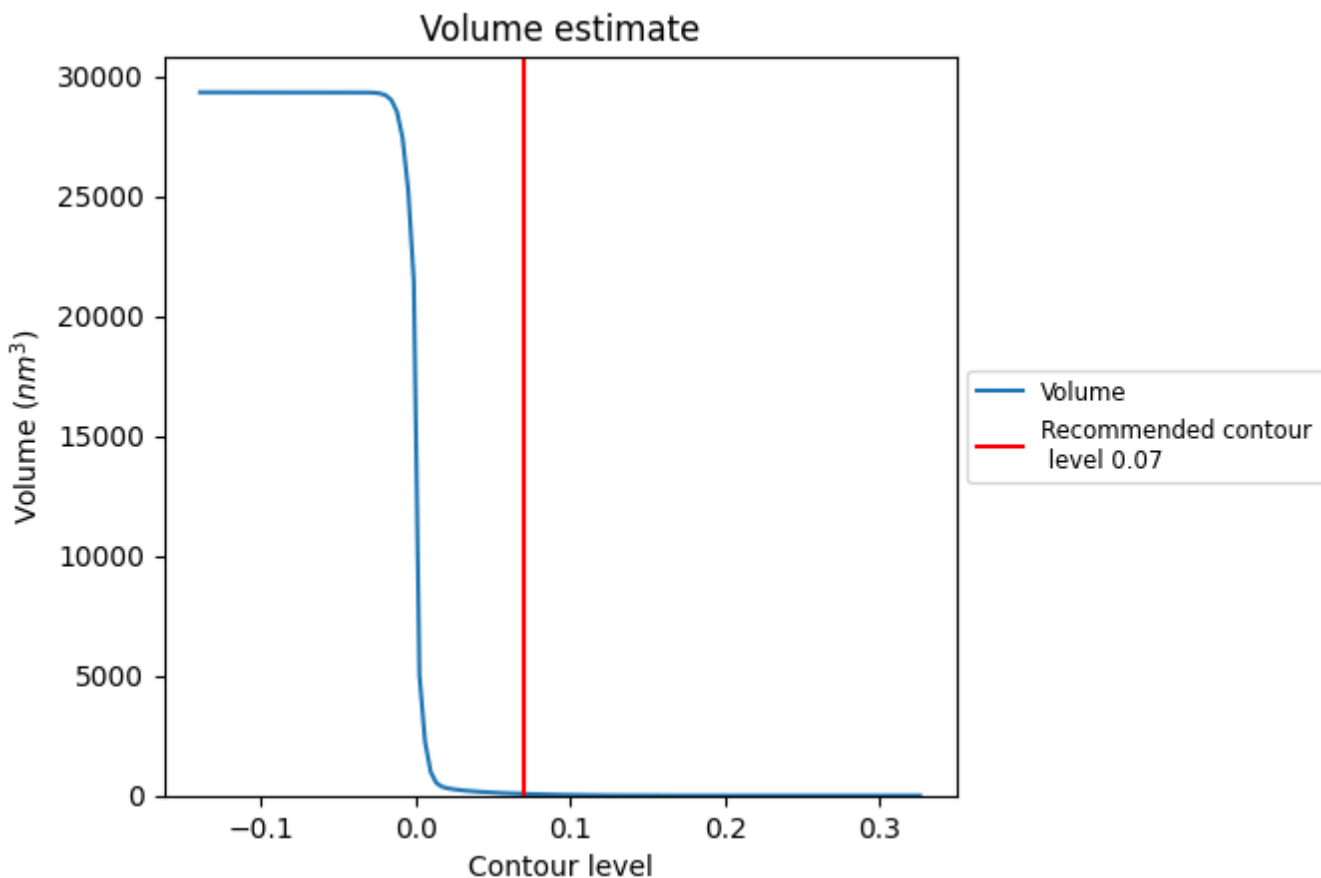
This section contains the results of statistical analysis of the map.

7.1 Map-value distribution [i](#)



The map-value distribution is plotted in 128 intervals along the x-axis. The y-axis is logarithmic. A spike in this graph at zero usually indicates that the volume has been masked.

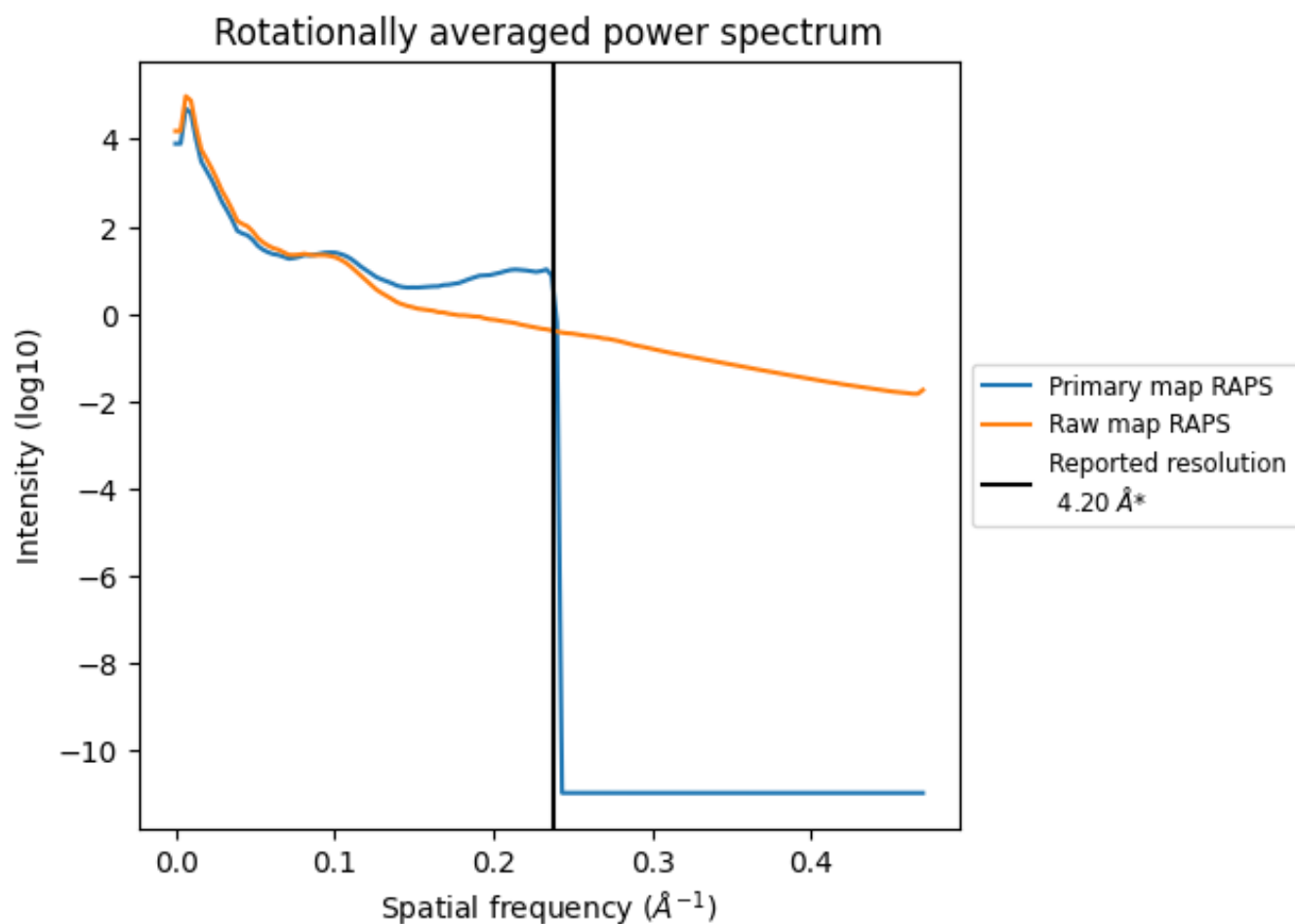
7.2 Volume estimate [\(i\)](#)



The volume at the recommended contour level is 70 nm³; this corresponds to an approximate mass of 63 kDa.

The volume estimate graph shows how the enclosed volume varies with the contour level. The recommended contour level is shown as a vertical line and the intersection between the line and the curve gives the volume of the enclosed surface at the given level.

7.3 Rotationally averaged power spectrum [i](#)

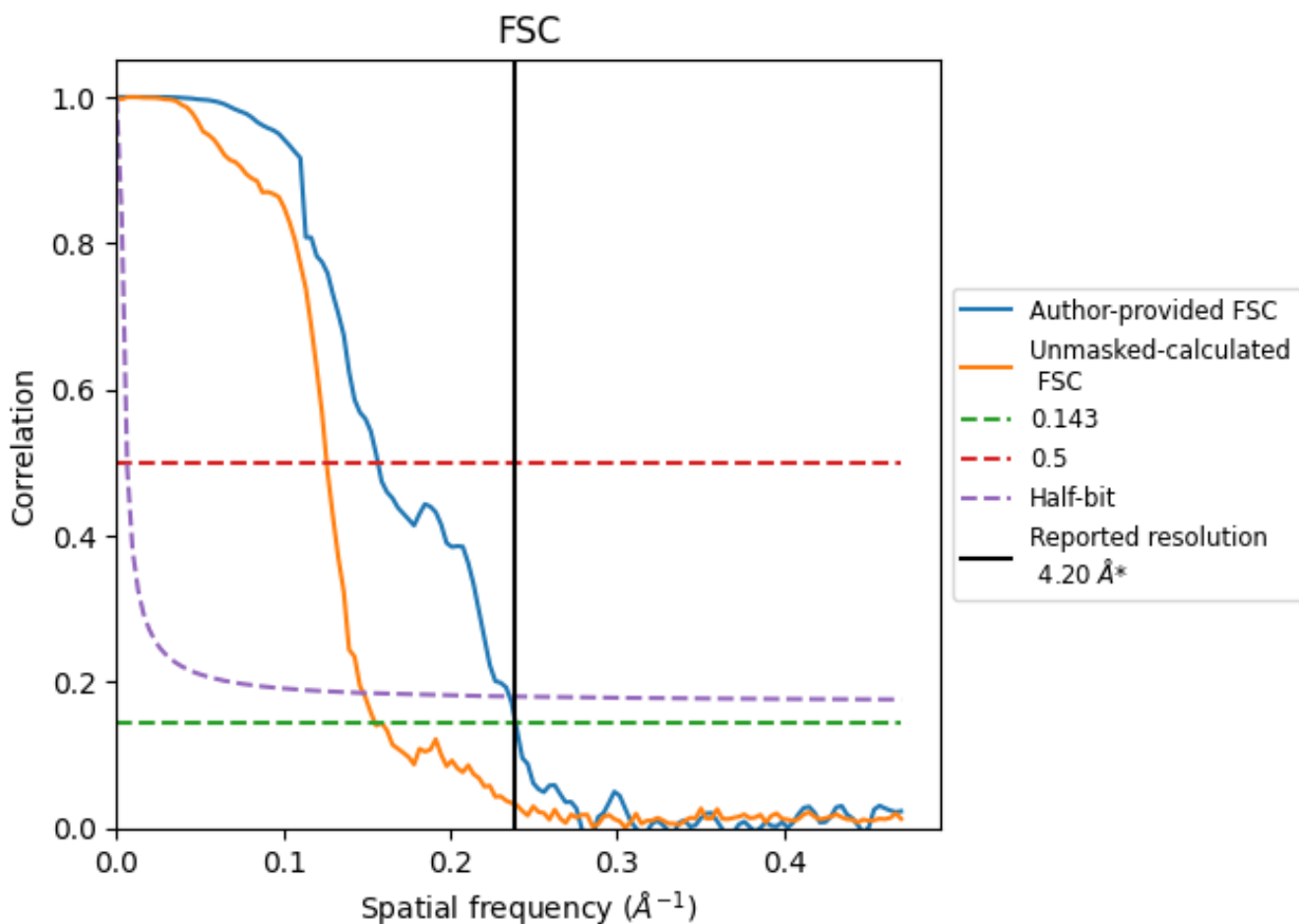


*Reported resolution corresponds to spatial frequency of 0.238 Å⁻¹

8 Fourier-Shell correlation [i](#)

Fourier-Shell Correlation (FSC) is the most commonly used method to estimate the resolution of single-particle and subtomogram-averaged maps. The shape of the curve depends on the imposed symmetry, mask and whether or not the two 3D reconstructions used were processed from a common reference. The reported resolution is shown as a black line. A curve is displayed for the half-bit criterion in addition to lines showing the 0.143 gold standard cut-off and 0.5 cut-off.

8.1 FSC [i](#)



*Reported resolution corresponds to spatial frequency of 0.238 \AA^{-1}

8.2 Resolution estimates [i](#)

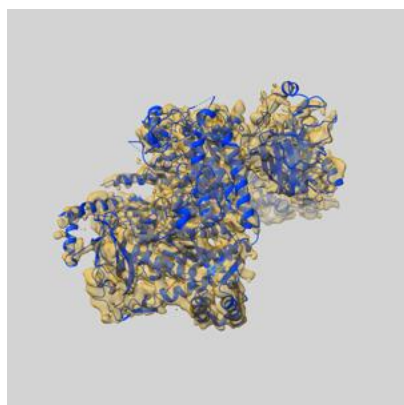
Resolution estimate (Å)	Estimation criterion (FSC cut-off)		
	0.143	0.5	Half-bit
Reported by author	4.20	-	-
Author-provided FSC curve	4.18	6.39	4.25
Unmasked-calculated*	6.45	7.94	6.76

*Resolution estimate based on FSC curve calculated by comparison of deposited half-maps. The value from deposited half-maps intersecting FSC 0.143 CUT-OFF 6.45 differs from the reported value 4.2 by more than 10 %

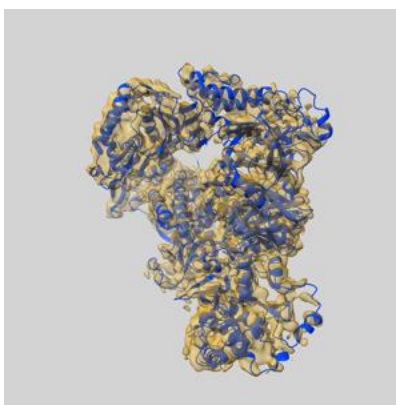
9 Map-model fit [i](#)

This section contains information regarding the fit between EMDB map EMD-10088 and PDB model 6S2E. Per-residue inclusion information can be found in section 3 on page 6.

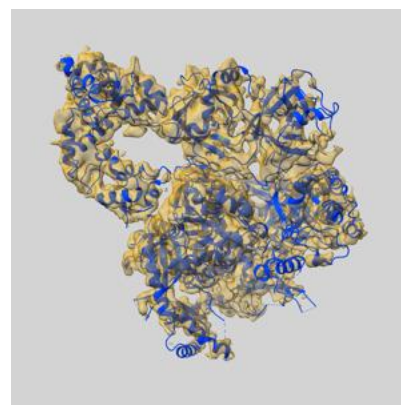
9.1 Map-model overlay [i](#)



X



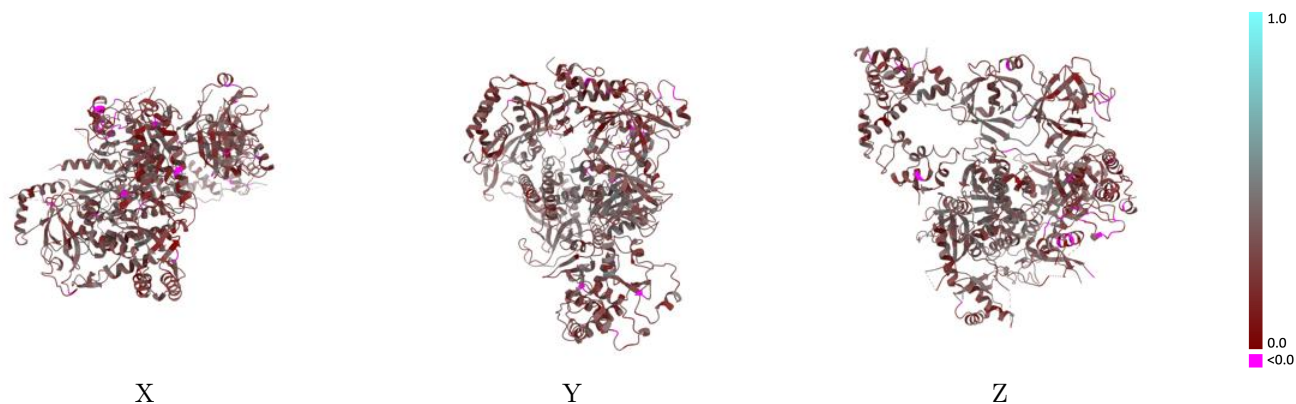
Y



Z

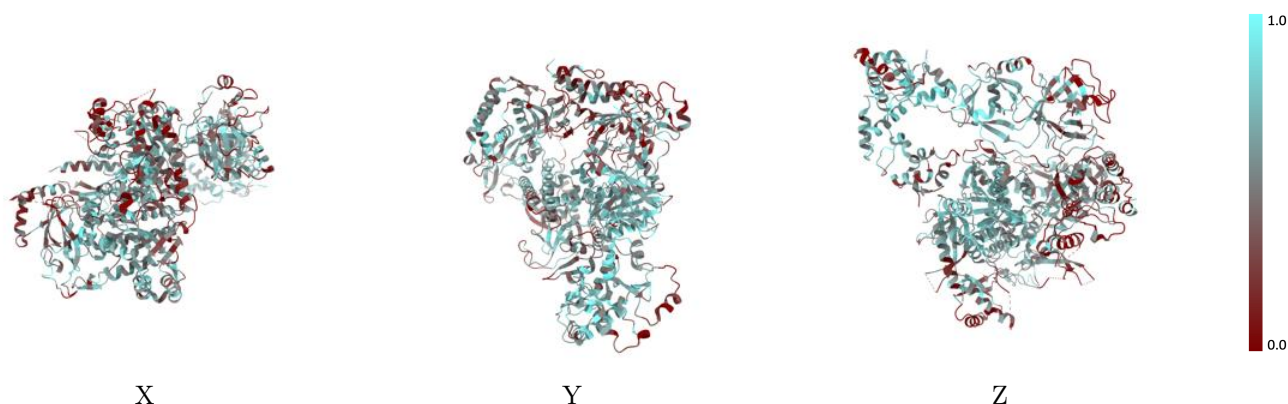
The images above show the 3D surface view of the map at the recommended contour level 0.07 at 50% transparency in yellow overlaid with a ribbon representation of the model coloured in blue. These images allow for the visual assessment of the quality of fit between the atomic model and the map.

9.2 Q-score mapped to coordinate model [i](#)



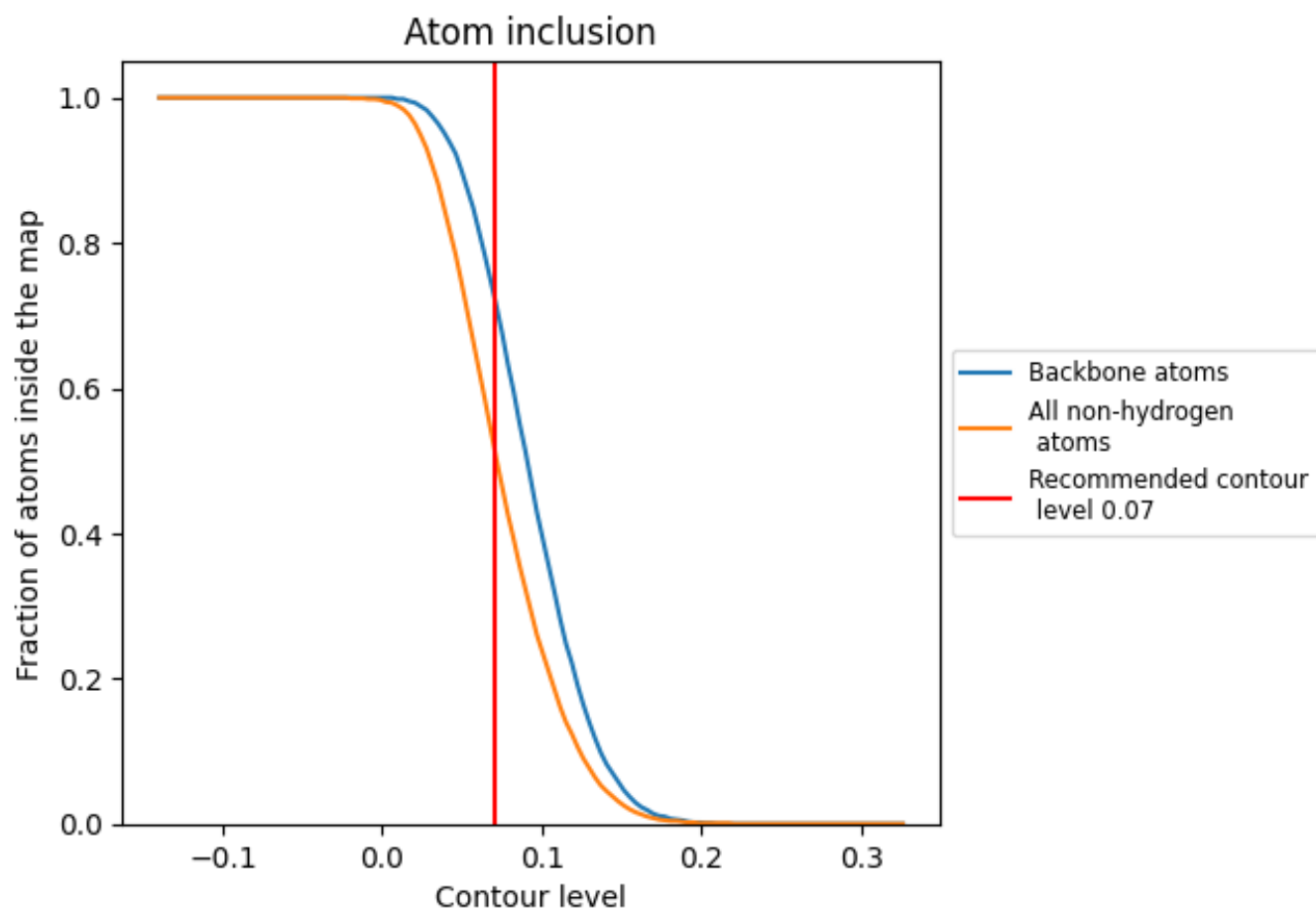
The images above show the model with each residue coloured according to its Q-score. This shows their resolvability in the map with higher Q-score values reflecting better resolvability. Please note: Q-score is calculating the resolvability of atoms, and thus high values are only expected at resolutions at which atoms can be resolved. Low Q-score values may therefore be expected for many entries.

9.3 Atom inclusion mapped to coordinate model [i](#)



The images above show the model with each residue coloured according to its atom inclusion. This shows to what extent they are inside the map at the recommended contour level (0.07).











9.4 Atom inclusion [i](#)



At the recommended contour level, 73% of all backbone atoms, 52% of all non-hydrogen atoms, are inside the map.

9.5 Map-model fit summary

The table lists the average atom inclusion at the recommended contour level (0.07) and Q-score for the entire model and for each chain.

Chain	Atom inclusion	Q-score
All	 0.5190	 0.3010
A	 0.5060	 0.2990
B	 0.5550	 0.3080
D	 0.4910	 0.2900
E	 0.6440	 0.3400

