



# Full wwPDB X-ray Structure Validation Report ⓘ

Oct 3, 2023 – 05:02 AM EDT

PDB ID : 6U8L  
Title : Discovery and optimization of salicylic acid-derived sulfonamide inhibitors of the WDR5:MYC protein-protein interaction  
Authors : Zhao, B.; Wang, F.  
Deposited on : 2019-09-05  
Resolution : 1.57 Å(reported)

This is a Full wwPDB X-ray Structure Validation Report for a publicly released PDB entry.

We welcome your comments at [validation@mail.wwpdb.org](mailto:validation@mail.wwpdb.org)

A user guide is available at

<https://www.wwpdb.org/validation/2017/XrayValidationReportHelp>

with specific help available everywhere you see the ⓘ symbol.

The types of validation reports are described at

<http://www.wwpdb.org/validation/2017/FAQs#types>.

---

The following versions of software and data (see [references ⓘ](#)) were used in the production of this report:

MolProbity : **FAILED**  
Mogul : 1.8.5 (274361), CSD as541be (2020)  
Xtrriage (Phenix) : 1.13  
EDS : **FAILED**  
buster-report : 1.1.7 (2018)  
Percentile statistics : 20191225.v01 (using entries in the PDB archive December 25th 2019)  
Ideal geometry (proteins) : Engh & Huber (2001)  
Ideal geometry (DNA, RNA) : Parkinson et al. (1996)  
Validation Pipeline (wwPDB-VP) : 2.35.1

## 1 Overall quality at a glance

The following experimental techniques were used to determine the structure:

*X-RAY DIFFRACTION*

The reported resolution of this entry is 1.57 Å.

There are no overall percentile quality scores available for this entry.

MolProbity and EDS failed to run properly - the sequence quality summary graphics cannot be shown.

## 2 Entry composition [i](#)

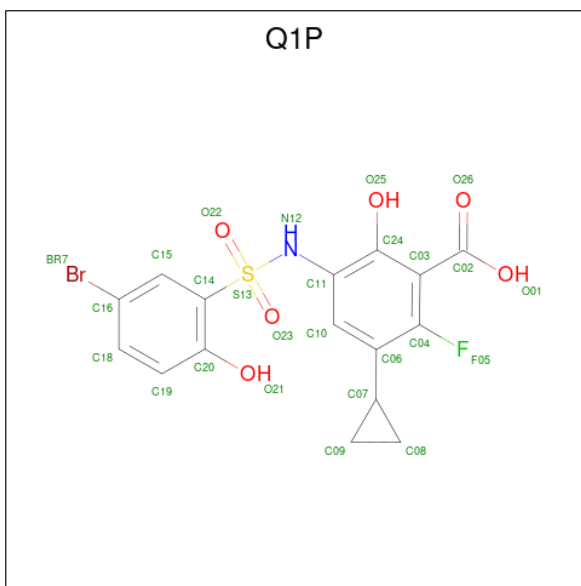
There are 4 unique types of molecules in this entry. The entry contains 5589 atoms, of which 0 are hydrogens and 0 are deuteriums.

In the tables below, the ZeroOcc column contains the number of atoms modelled with zero occupancy, the AltConf column contains the number of residues with at least one atom in alternate conformation and the Trace column contains the number of residues modelled with at most 2 atoms.

- Molecule 1 is a protein called WD repeat-containing protein 5.

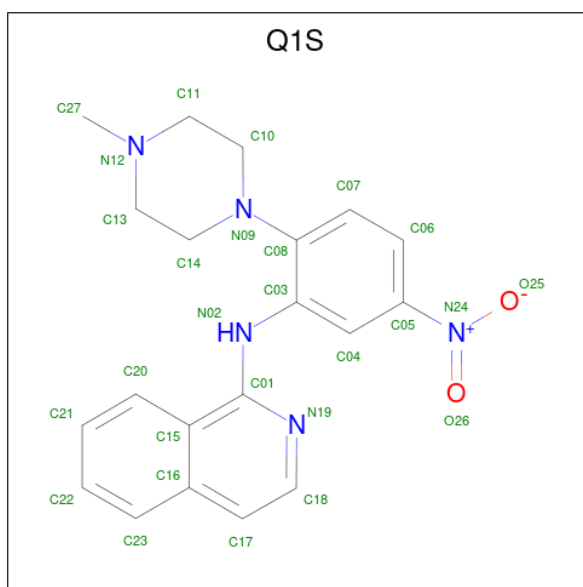
Mol	Chain	Residues	Atoms					ZeroOcc	AltConf	Trace
			Total	C	N	O	S			
1	A	304	Total 2430	C 1548	N 407	O 464	S 11	0	13	0
1	B	304	Total 2375	C 1515	N 394	O 456	S 10	0	6	0

- Molecule 2 is 3-[[5-bromo-2-hydroxyphenyl)sulfonyl]amino}-5-cyclopropyl-6-fluoro-2-hydroxybenzoic acid (three-letter code: Q1P) (formula: C<sub>16</sub>H<sub>13</sub>BrFNO<sub>6</sub>S) (labeled as "Ligand of Interest" by depositor).



Mol	Chain	Residues	Atoms						ZeroOcc	AltConf	
			Total	Br	C	F	N	O			S
2	A	1	Total 26	Br 1	C 16	F 1	N 1	O 6	S 1	0	0
2	B	1	Total 26	Br 1	C 16	F 1	N 1	O 6	S 1	0	0

- Molecule 3 is N-[2-(4-methylpiperazin-1-yl)-5-nitrophenyl]isoquinolin-1-amine (three-letter code: Q1S) (formula: C<sub>20</sub>H<sub>21</sub>N<sub>5</sub>O<sub>2</sub>) (labeled as "Ligand of Interest" by depositor).



Mol	Chain	Residues	Atoms			ZeroOcc	AltConf	
			Total	C	N			O
3	A	1	27	20	5	2	0	0
3	B	1	27	20	5	2	0	0

- Molecule 4 is water.

Mol	Chain	Residues	Atoms		ZeroOcc	AltConf
			Total	O		
4	A	375	375	375	0	0
4	B	303	303	303	0	0

MolProbity and EDS failed to run properly - this section is therefore empty.

### 3 Data and refinement statistics

EDS failed to run properly - this section is therefore incomplete.

Property	Value	Source
Space group	C 1 2 1	Depositor
Cell constants a, b, c, $\alpha$ , $\beta$ , $\gamma$	134.65Å 47.08Å 113.05Å 90.00° 117.91° 90.00°	Depositor
Resolution (Å)	26.51 – 1.57	Depositor
% Data completeness (in resolution range)	98.3 (26.51-1.57)	Depositor
$R_{merge}$	0.07	Depositor
$R_{sym}$	0.09	Depositor
$\langle I/\sigma(I) \rangle$ <sup>1</sup>	2.70 (at 1.57Å)	Xtrriage
Refinement program	PHENIX 1.10_2155	Depositor
R, $R_{free}$	0.151 , 0.176	Depositor
Wilson B-factor (Å <sup>2</sup> )	17.3	Xtrriage
Anisotropy	0.202	Xtrriage
L-test for twinning <sup>2</sup>	$\langle  L  \rangle = 0.50$ , $\langle L^2 \rangle = 0.33$	Xtrriage
Estimated twinning fraction	No twinning to report.	Xtrriage
Total number of atoms	5589	wwPDB-VP
Average B, all atoms (Å <sup>2</sup> )	25.0	wwPDB-VP

Xtrriage's analysis on translational NCS is as follows: *The analyses of the Patterson function reveals a significant off-origin peak that is 35.88 % of the origin peak, indicating pseudo-translational symmetry. The chance of finding a peak of this or larger height randomly in a structure without pseudo-translational symmetry is equal to 5.4504e-04. The detected translational NCS is most likely also responsible for the elevated intensity ratio.*

<sup>1</sup>Intensities estimated from amplitudes.

<sup>2</sup>Theoretical values of  $\langle |L| \rangle$ ,  $\langle L^2 \rangle$  for acentric reflections are 0.5, 0.333 respectively for untwinned datasets, and 0.375, 0.2 for perfectly twinned datasets.

## 4 Model quality [i](#)

### 4.1 Standard geometry [i](#)

MolProbity failed to run properly - this section is therefore empty.

### 4.2 Too-close contacts [i](#)

MolProbity failed to run properly - this section is therefore empty.

### 4.3 Torsion angles [i](#)

#### 4.3.1 Protein backbone [i](#)

MolProbity failed to run properly - this section is therefore empty.

#### 4.3.2 Protein sidechains [i](#)

MolProbity failed to run properly - this section is therefore empty.

#### 4.3.3 RNA [i](#)

MolProbity failed to run properly - this section is therefore empty.

### 4.4 Non-standard residues in protein, DNA, RNA chains [i](#)

There are no non-standard protein/DNA/RNA residues in this entry.

### 4.5 Carbohydrates [i](#)

There are no monosaccharides in this entry.

### 4.6 Ligand geometry [i](#)

4 ligands are modelled in this entry.

In the following table, the Counts columns list the number of bonds (or angles) for which Mogul statistics could be retrieved, the number of bonds (or angles) that are observed in the model and the number of bonds (or angles) that are defined in the Chemical Component Dictionary. The Link column lists molecule types, if any, to which the group is linked. The Z score for a bond

length (or angle) is the number of standard deviations the observed value is removed from the expected value. A bond length (or angle) with  $|Z| > 2$  is considered an outlier worth inspection. RMSZ is the root-mean-square of all Z scores of the bond lengths (or angles).

Mol	Type	Chain	Res	Link	Bond lengths			Bond angles		
					Counts	RMSZ	# Z  > 2	Counts	RMSZ	# Z  > 2
2	Q1P	B	401	-	28,28,28	1.02	3 (10%)	41,43,43	1.12	3 (7%)
2	Q1P	A	401	-	28,28,28	0.98	1 (3%)	41,43,43	1.20	3 (7%)
3	Q1S	A	402	-	29,30,30	1.01	2 (6%)	39,42,42	1.12	2 (5%)
3	Q1S	B	402	-	29,30,30	1.02	2 (6%)	39,42,42	1.13	3 (7%)

In the following table, the Chirals column lists the number of chiral outliers, the number of chiral centers analysed, the number of these observed in the model and the number defined in the Chemical Component Dictionary. Similar counts are reported in the Torsion and Rings columns. '-' means no outliers of that kind were identified.

Mol	Type	Chain	Res	Link	Chirals	Torsions	Rings
2	Q1P	B	401	-	-	0/19/21/21	0/3/3/3
2	Q1P	A	401	-	-	2/19/21/21	0/3/3/3
3	Q1S	A	402	-	-	1/10/22/22	0/4/4/4
3	Q1S	B	402	-	-	1/10/22/22	0/4/4/4

All (8) bond length outliers are listed below:

Mol	Chain	Res	Type	Atoms	Z	Observed(Å)	Ideal(Å)
3	B	402	Q1S	C01-N02	2.70	1.40	1.36
3	A	402	Q1S	C01-N02	2.34	1.39	1.36
2	A	401	Q1P	S13-N12	2.34	1.67	1.63
2	B	401	Q1P	C06-C04	2.34	1.41	1.38
2	B	401	Q1P	S13-N12	2.24	1.67	1.63
3	A	402	Q1S	C01-C15	-2.17	1.42	1.44
3	B	402	Q1S	C01-C15	-2.09	1.42	1.44
2	B	401	Q1P	O23-S13	2.06	1.45	1.43

All (11) bond angle outliers are listed below:

Mol	Chain	Res	Type	Atoms	Z	Observed(°)	Ideal(°)
3	B	402	Q1S	C14-C13-N12	3.88	115.18	110.80
2	A	401	Q1P	C24-C03-C02	3.15	124.23	117.02
3	A	402	Q1S	C14-C13-N12	2.92	114.11	110.80
2	B	401	Q1P	O26-C02-C03	2.77	127.99	121.16
2	A	401	Q1P	C04-C03-C02	-2.69	117.47	121.64
2	A	401	Q1P	O26-C02-C03	2.54	127.43	121.16

*Continued on next page...*

*Continued from previous page...*

Mol	Chain	Res	Type	Atoms	Z	Observed(°)	Ideal(°)
3	A	402	Q1S	N02-C01-N19	-2.36	115.55	118.72
3	B	402	Q1S	C07-C08-N09	-2.30	118.63	122.30
2	B	401	Q1P	C14-S13-N12	-2.23	104.67	107.27
3	B	402	Q1S	C14-N09-C10	2.07	116.09	111.52
2	B	401	Q1P	C24-C03-C02	2.07	121.75	117.02

There are no chirality outliers.

All (4) torsion outliers are listed below:

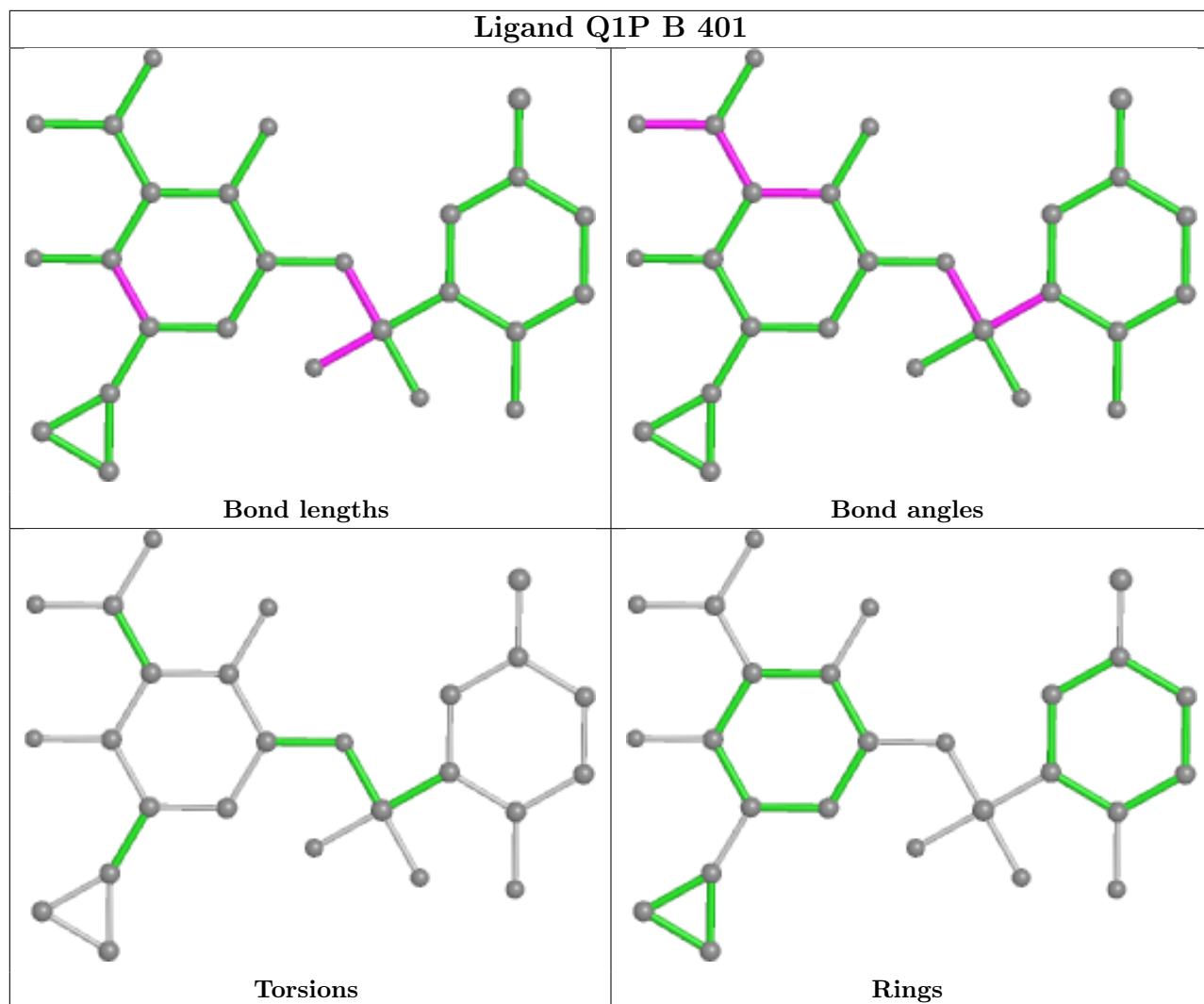
Mol	Chain	Res	Type	Atoms
3	A	402	Q1S	C08-C03-N02-C01
3	B	402	Q1S	C08-C03-N02-C01
2	A	401	Q1P	O01-C02-C03-C04
2	A	401	Q1P	O26-C02-C03-C04

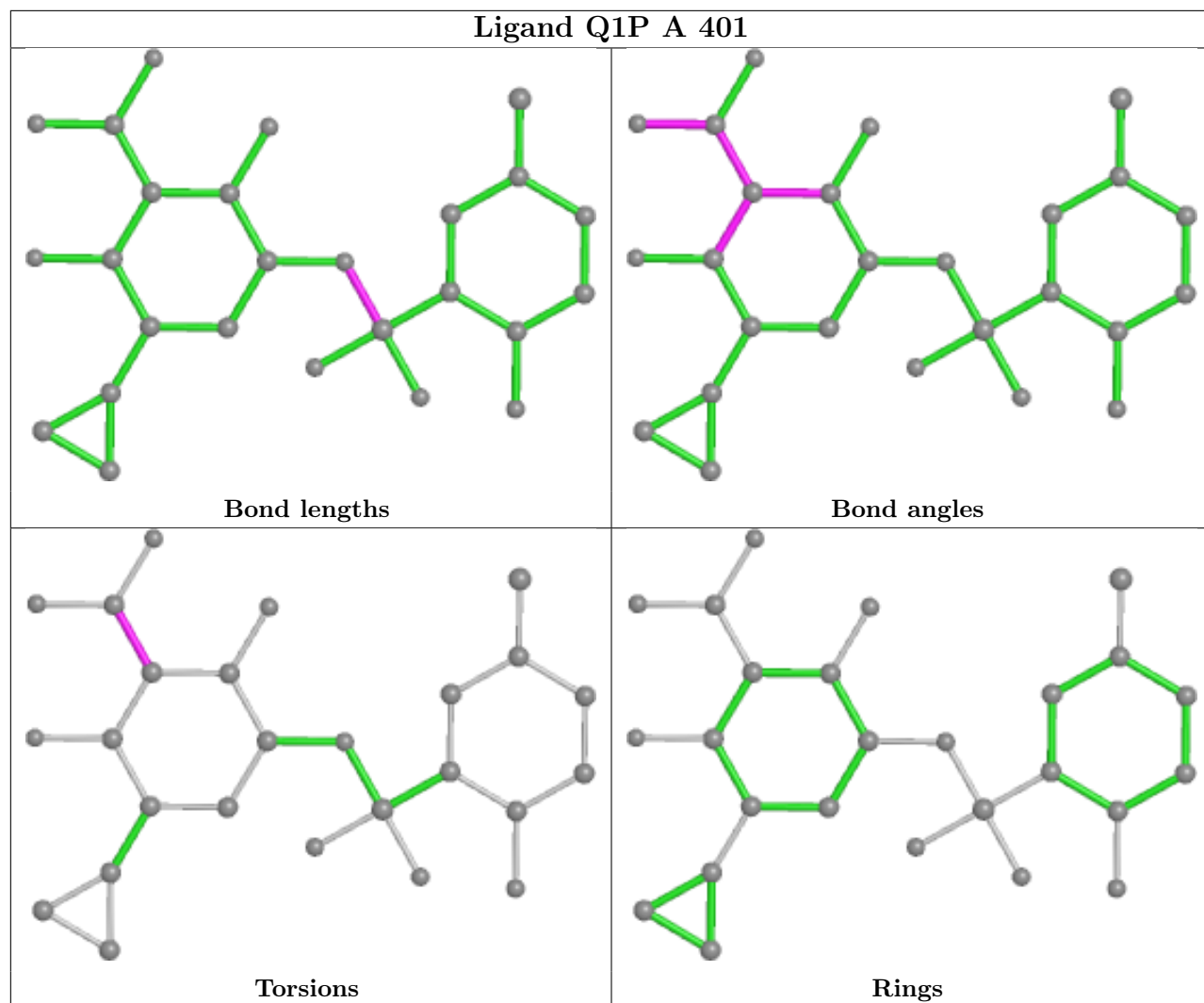
There are no ring outliers.

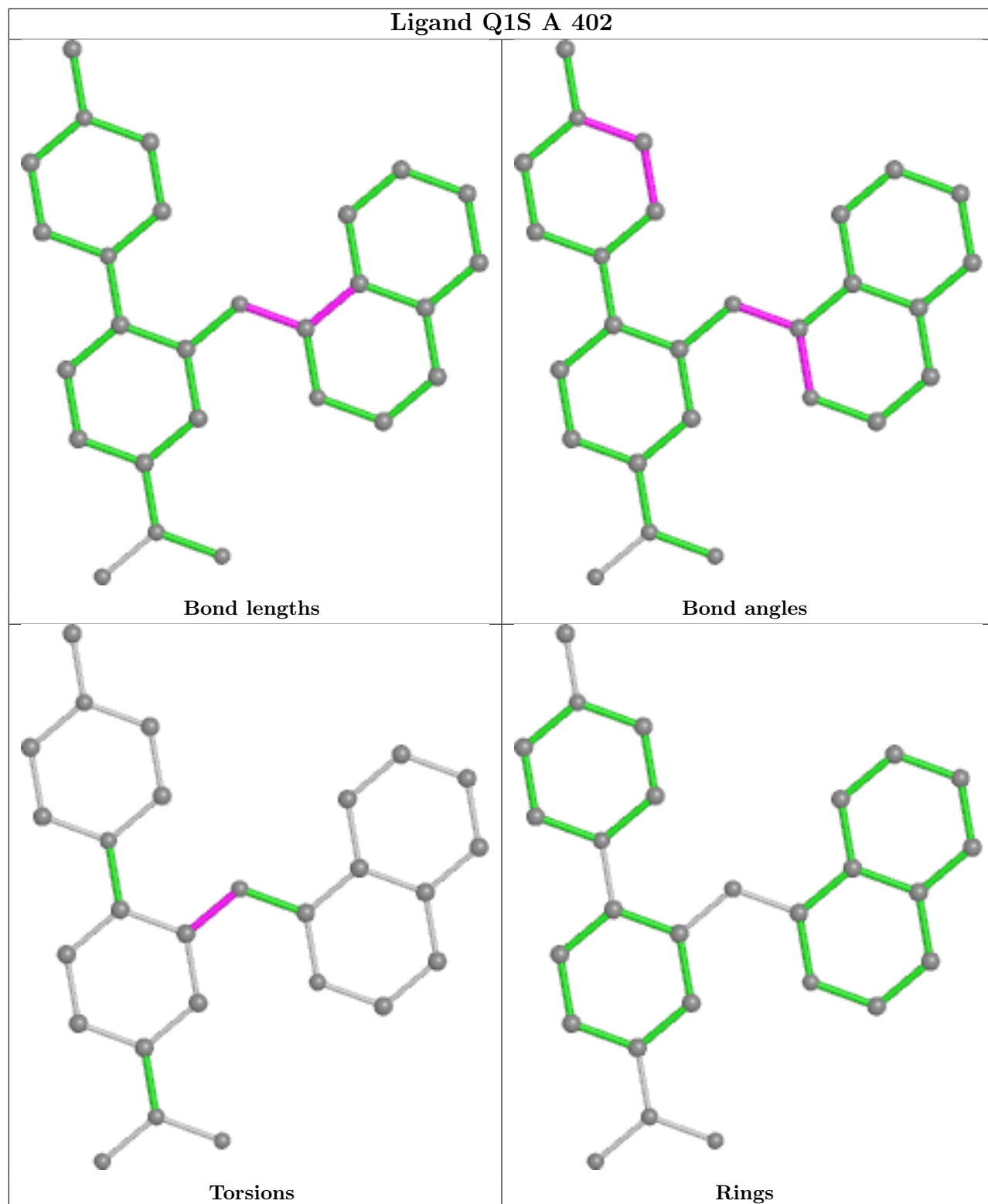
No monomer is involved in short contacts.

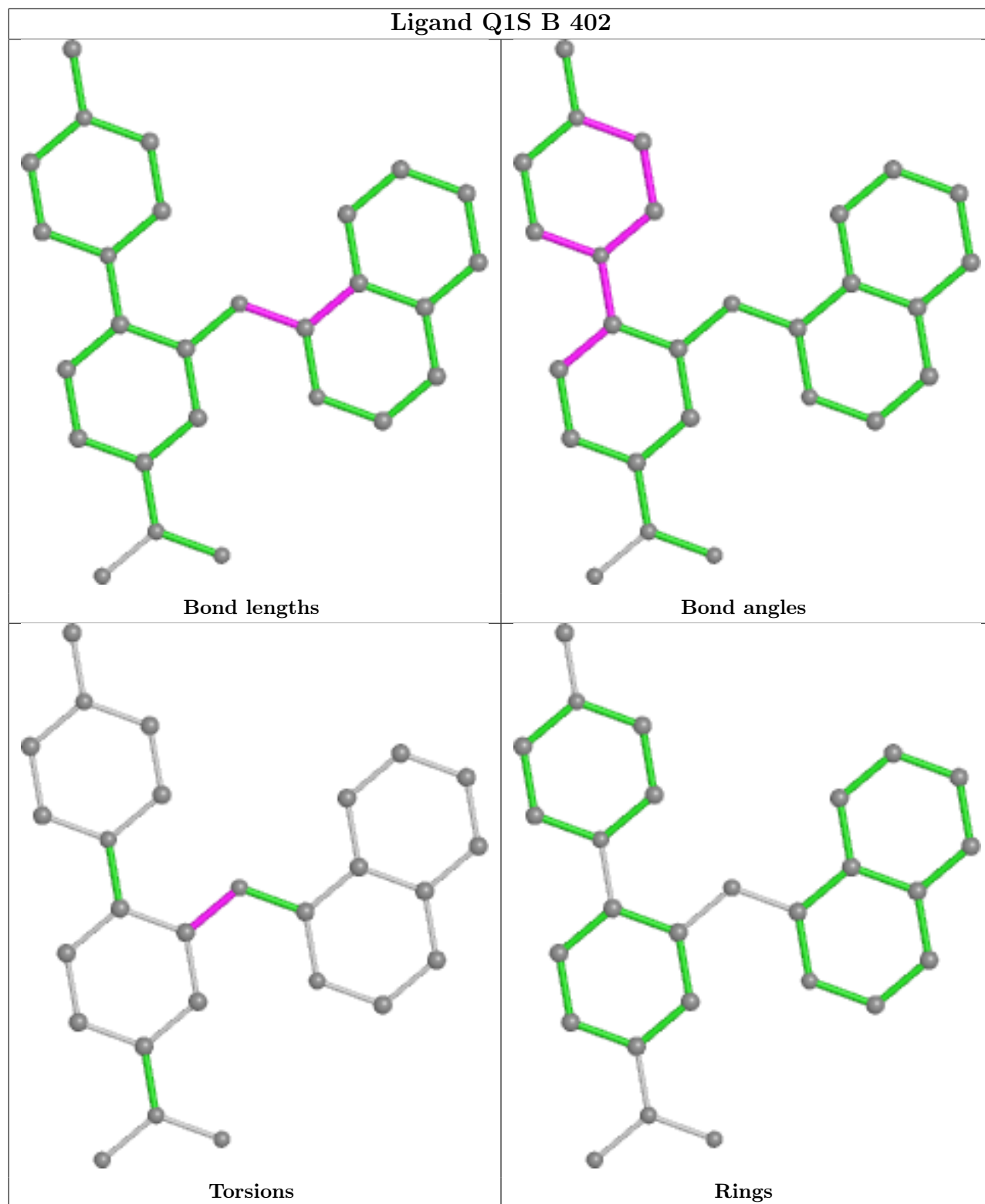
The following is a two-dimensional graphical depiction of Mogul quality analysis of bond lengths, bond angles, torsion angles, and ring geometry for all instances of the Ligand of Interest. In addition, ligands with molecular weight > 250 and outliers as shown on the validation Tables will also be included. For torsion angles, if less than 5% of the Mogul distribution of torsion angles is within 10 degrees of the torsion angle in question, then that torsion angle is considered an outlier. Any bond that is central to one or more torsion angles identified as an outlier by Mogul will be highlighted in the graph. For rings, the root-mean-square deviation (RMSD) between the ring in question and similar rings identified by Mogul is calculated over all ring torsion angles. If the average RMSD is greater than 60 degrees and the minimal RMSD between the ring in question and any Mogul-identified rings is also greater than 60 degrees, then that ring is considered an outlier. The outliers are highlighted in purple. The color gray indicates Mogul did not find sufficient equivalents in the CSD to analyse the geometry.











#### 4.7 Other polymers [\(i\)](#)

There are no such residues in this entry.

## 4.8 Polymer linkage issues

There are no chain breaks in this entry.

## 5 Fit of model and data

### 5.1 Protein, DNA and RNA chains

EDS failed to run properly - this section is therefore empty.

### 5.2 Non-standard residues in protein, DNA, RNA chains

EDS failed to run properly - this section is therefore empty.

### 5.3 Carbohydrates

EDS failed to run properly - this section is therefore empty.

### 5.4 Ligands

EDS failed to run properly - this section is therefore empty.

### 5.5 Other polymers

EDS failed to run properly - this section is therefore empty.