



Full wwPDB X-ray Structure Validation Report ⓘ

Oct 9, 2023 – 01:55 PM EDT

PDB ID : 6WY9
Title : Tcur3481-Tcur3483 steroid ACAD G363A variant
Authors : Kimber, M.S.; Stirling, A.J.; Seah, S.Y.K.
Deposited on : 2020-05-12
Resolution : 2.00 Å(reported)

This is a Full wwPDB X-ray Structure Validation Report for a publicly released PDB entry.

We welcome your comments at validation@mail.wwpdb.org

A user guide is available at

<https://www.wwpdb.org/validation/2017/XrayValidationReportHelp>

with specific help available everywhere you see the ⓘ symbol.

The types of validation reports are described at

<http://www.wwpdb.org/validation/2017/FAQs#types>.

The following versions of software and data (see [references ⓘ](#)) were used in the production of this report:

MolProbity : 4.02b-467
Mogul : 1.8.5 (274361), CSD as541be (2020)
Xtriage (Phenix) : 1.13
EDS : 2.35.1
buster-report : 1.1.7 (2018)
Percentile statistics : 20191225.v01 (using entries in the PDB archive December 25th 2019)
Refmac : 5.8.0158
CCP4 : 7.0.044 (Gargrove)
Ideal geometry (proteins) : Engh & Huber (2001)
Ideal geometry (DNA, RNA) : Parkinson et al. (1996)
Validation Pipeline (wwPDB-VP) : 2.35.1

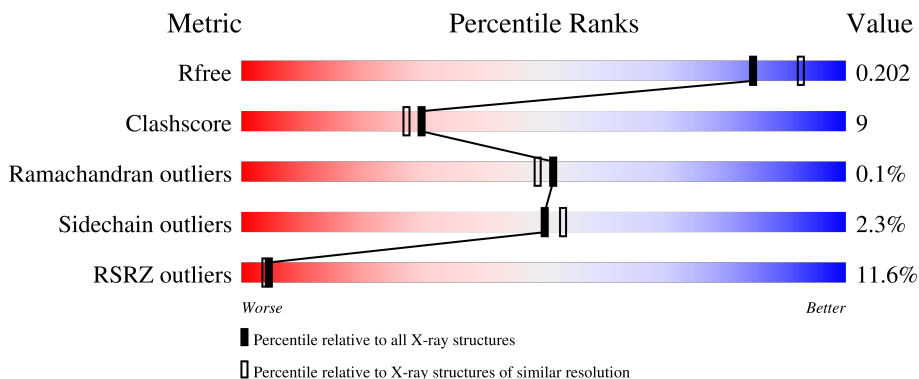
1 Overall quality at a glance

The following experimental techniques were used to determine the structure:

X-RAY DIFFRACTION

The reported resolution of this entry is 2.00 Å.

Percentile scores (ranging between 0-100) for global validation metrics of the entry are shown in the following graphic. The table shows the number of entries on which the scores are based.



Metric	Whole archive (#Entries)	Similar resolution (#Entries, resolution range(Å))
R_{free}	130704	8085 (2.00-2.00)
Clashscore	141614	9178 (2.00-2.00)
Ramachandran outliers	138981	9054 (2.00-2.00)
Sidechain outliers	138945	9053 (2.00-2.00)
RSRZ outliers	127900	7900 (2.00-2.00)

The table below summarises the geometric issues observed across the polymeric chains and their fit to the electron density. The red, orange, yellow and green segments of the lower bar indicate the fraction of residues that contain outliers for ≥ 3 , 2, 1 and 0 types of geometric quality criteria respectively. A grey segment represents the fraction of residues that are not modelled. The numeric value for each fraction is indicated below the corresponding segment, with a dot representing fractions $\leq 5\%$. The upper red bar (where present) indicates the fraction of residues that have poor fit to the electron density. The numeric value is given above the bar.

Mol	Chain	Length	Quality of chain
1	A	407	 15% 71% 20% • 7%
2	B	364	 7% 91% 8% ••

The following table lists non-polymeric compounds, carbohydrate monomers and non-standard residues in protein, DNA, RNA chains that are outliers for geometric or electron-density-fit criteria:

Mol	Type	Chain	Res	Chirality	Geometry	Clashes	Electron density
5	GOL	A	407	-	-	-	X
5	GOL	B	403	-	-	-	X
5	GOL	B	404	-	X	-	-
5	GOL	B	405	-	-	-	X
6	CL	B	406	-	-	-	X

2 Entry composition [i](#)

There are 7 unique types of molecules in this entry. The entry contains 6100 atoms, of which 159 are hydrogens and 0 are deuteriums.

In the tables below, the ZeroOcc column contains the number of atoms modelled with zero occupancy, the AltConf column contains the number of residues with at least one atom in alternate conformation and the Trace column contains the number of residues modelled with at most 2 atoms.

- Molecule 1 is a protein called Acyl-CoA dehydrogenase domain protein Tcur3483.

Mol	Chain	Residues	Atoms					ZeroOcc	AltConf	Trace
			Total	C	N	O	S			
1	A	380	2932	1862	512	549	9	0	3	0

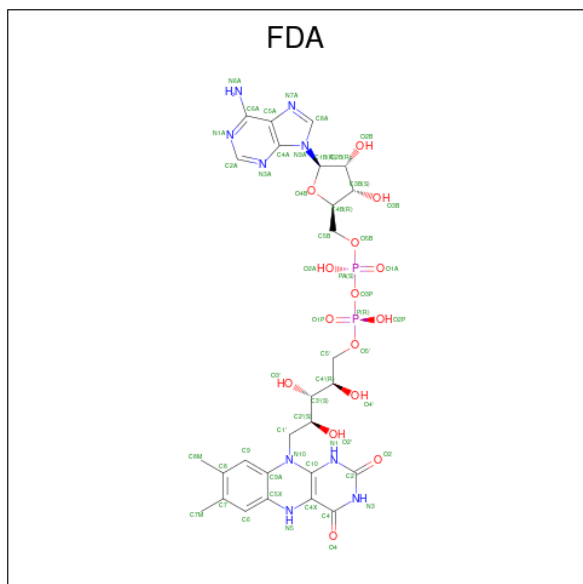
There are 21 discrepancies between the modelled and reference sequences:

Chain	Residue	Modelled	Actual	Comment	Reference
A	-19	MET	-	initiating methionine	UNP D1AB78
A	-18	GLY	-	expression tag	UNP D1AB78
A	-17	SER	-	expression tag	UNP D1AB78
A	-16	SER	-	expression tag	UNP D1AB78
A	-15	HIS	-	expression tag	UNP D1AB78
A	-14	HIS	-	expression tag	UNP D1AB78
A	-13	HIS	-	expression tag	UNP D1AB78
A	-12	HIS	-	expression tag	UNP D1AB78
A	-11	HIS	-	expression tag	UNP D1AB78
A	-10	HIS	-	expression tag	UNP D1AB78
A	-9	SER	-	expression tag	UNP D1AB78
A	-8	SER	-	expression tag	UNP D1AB78
A	-7	GLY	-	expression tag	UNP D1AB78
A	-6	LEU	-	expression tag	UNP D1AB78
A	-5	VAL	-	expression tag	UNP D1AB78
A	-4	PRO	-	expression tag	UNP D1AB78
A	-3	ARG	-	expression tag	UNP D1AB78
A	-2	GLY	-	expression tag	UNP D1AB78
A	-1	SER	-	expression tag	UNP D1AB78
A	0	HIS	-	expression tag	UNP D1AB78
A	363	ALA	GLY	variant	UNP D1AB78

- Molecule 2 is a protein called Acyl-CoA dehydrogenase domain protein Tcur3481.

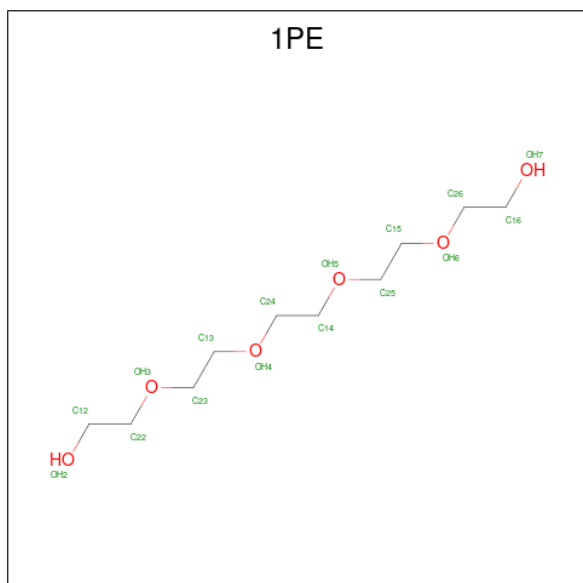
Mol	Chain	Residues	Atoms					ZeroOcc	AltConf	Trace
			Total	C	N	O	S			
2	B	361	2658	1671	473	506	8	0	1	0

- Molecule 3 is DIHYDROFLAVINE-ADENINE DINUCLEOTIDE (three-letter code: FDA) (formula: $C_{27}H_{35}N_9O_{15}P_2$) (labeled as "Ligand of Interest" by depositor).



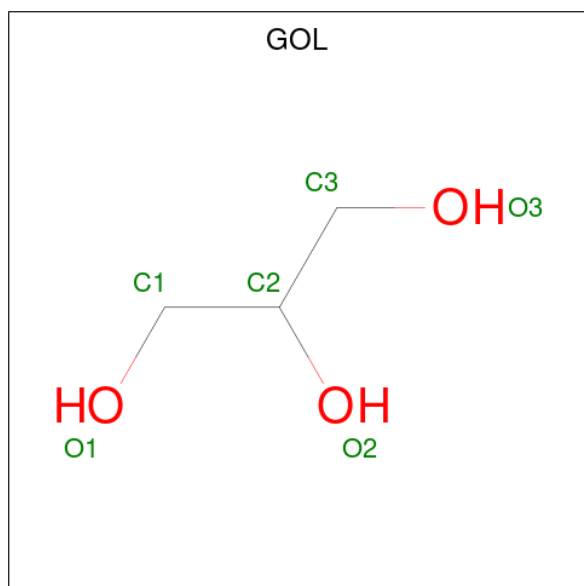
Mol	Chain	Residues	Atoms						ZeroOcc	AltConf
			Total	C	H	N	O	P		
3	A	1	86	27	33	9	15	2	0	0

- Molecule 4 is PENTAETHYLENE GLYCOL (three-letter code: 1PE) (formula: $C_{10}H_{22}O_6$).



Mol	Chain	Residues	Atoms				ZeroOcc	AltConf
			Total	C	H	O		
4	A	1	38	10	22	6	0	0

- Molecule 5 is GLYCEROL (three-letter code: GOL) (formula: $C_3H_8O_3$).



Mol	Chain	Residues	Atoms				ZeroOcc	AltConf
			Total	C	H	O		
5	A	1	14	3	8	3	0	0
5	A	1	14	3	8	3	0	0
5	A	1	14	3	8	3	0	0
5	A	1	14	3	8	3	0	0
5	A	1	14	3	8	3	0	0
5	A	1	14	3	8	3	0	0
5	A	1	14	3	8	3	0	0
5	A	1	14	3	8	3	0	0
5	B	1	14	3	8	3	0	0
5	B	1	14	3	8	3	0	0
5	B	1	14	3	8	3	0	0

Continued on next page...

Continued from previous page...

Mol	Chain	Residues	Atoms				ZeroOcc	AltConf
5	B	1	Total	C	H	O	0	0
			14	3	8	3		
5	B	1	Total	C	H	O	0	0
			14	3	8	3		

- Molecule 6 is CHLORIDE ION (three-letter code: CL) (formula: Cl).

Mol	Chain	Residues	Atoms		ZeroOcc	AltConf
6	A	1	Total	Cl	0	0
			1	1		
6	B	1	Total	Cl	0	0
			1	1		

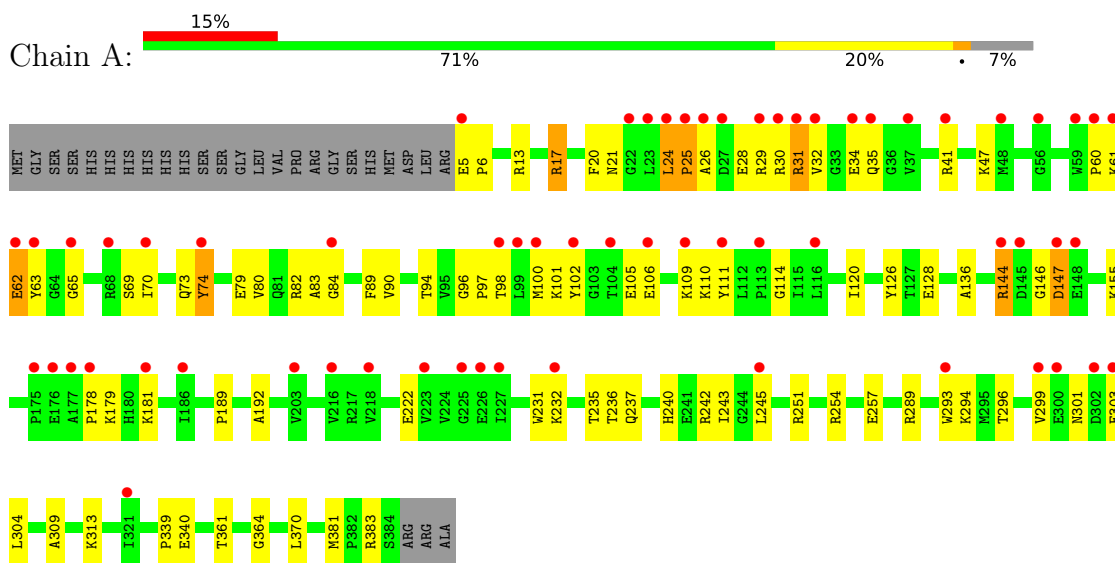
- Molecule 7 is water.

Mol	Chain	Residues	Atoms		ZeroOcc	AltConf
7	A	84	Total	O	0	0
			84	84		
7	B	118	Total	O	0	0
			118	118		

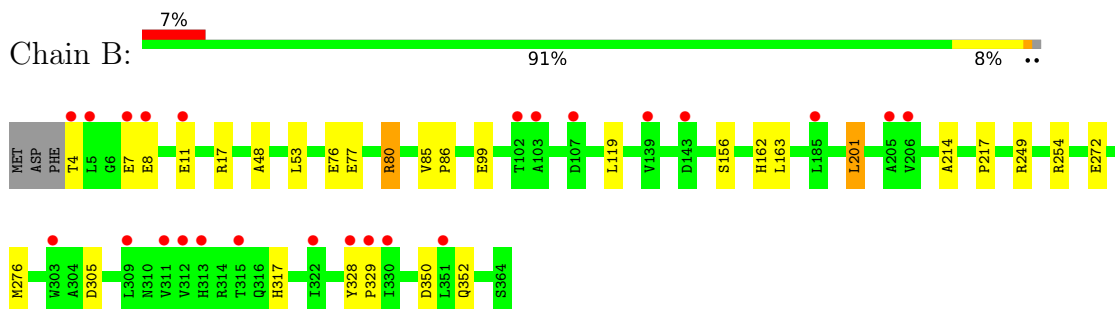
3 Residue-property plots

These plots are drawn for all protein, RNA, DNA and oligosaccharide chains in the entry. The first graphic for a chain summarises the proportions of the various outlier classes displayed in the second graphic. The second graphic shows the sequence view annotated by issues in geometry and electron density. Residues are color-coded according to the number of geometric quality criteria for which they contain at least one outlier: green = 0, yellow = 1, orange = 2 and red = 3 or more. A red dot above a residue indicates a poor fit to the electron density ($RSRZ > 2$). Stretches of 2 or more consecutive residues without any outlier are shown as a green connector. Residues present in the sample, but not in the model, are shown in grey.

- Molecule 1: Acyl-CoA dehydrogenase domain protein Tcur3483



- Molecule 2: Acyl-CoA dehydrogenase domain protein Tcur3481



4 Data and refinement statistics

Property	Value	Source
Space group	I 21 21 21	Depositor
Cell constants a, b, c, α , β , γ	99.50Å 123.20Å 139.21Å 90.00° 90.00° 90.00°	Depositor
Resolution (Å)	49.02 – 2.00 49.02 – 1.84	Depositor EDS
% Data completeness (in resolution range)	100.0 (49.02-2.00) 99.6 (49.02-1.84)	Depositor EDS
R_{merge}	(Not available)	Depositor
R_{sym}	0.07	Depositor
$\langle I/\sigma(I) \rangle$ ¹	1.31 (at 1.84Å)	Xtrriage
Refinement program	PHENIX 1.15.2_3472	Depositor
R, R_{free}	0.170 , 0.202 0.170 , 0.202	Depositor DCC
R_{free} test set	3696 reflections (5.00%)	wwPDB-VP
Wilson B-factor (Å ²)	46.8	Xtrriage
Anisotropy	0.096	Xtrriage
Bulk solvent k_{sol} (e/Å ³), B_{sol} (Å ²)	0.38 , 60.5	EDS
L-test for twinning ²	$\langle L \rangle = 0.50$, $\langle L^2 \rangle = 0.33$	Xtrriage
Estimated twinning fraction	No twinning to report.	Xtrriage
F_o, F_c correlation	0.97	EDS
Total number of atoms	6100	wwPDB-VP
Average B, all atoms (Å ²)	57.0	wwPDB-VP

Xtrriage's analysis on translational NCS is as follows: *The largest off-origin peak in the Patterson function is 3.91% of the height of the origin peak. No significant pseudotranslation is detected.*

¹Intensities estimated from amplitudes.

²Theoretical values of $\langle |L| \rangle$, $\langle L^2 \rangle$ for acentric reflections are 0.5, 0.333 respectively for untwinned datasets, and 0.375, 0.2 for perfectly twinned datasets.

5 Model quality [i](#)

5.1 Standard geometry [i](#)

Bond lengths and bond angles in the following residue types are not validated in this section: 1PE, CL, GOL, FDA

The Z score for a bond length (or angle) is the number of standard deviations the observed value is removed from the expected value. A bond length (or angle) with $|Z| > 5$ is considered an outlier worth inspection. RMSZ is the root-mean-square of all Z scores of the bond lengths (or angles).

Mol	Chain	Bond lengths		Bond angles	
		RMSZ	# Z >5	RMSZ	# Z >5
1	A	0.58	0/3003	0.67	1/4077 (0.0%)
2	B	0.65	0/2715	0.72	0/3707
All	All	0.61	0/5718	0.69	1/7784 (0.0%)

There are no bond length outliers.

All (1) bond angle outliers are listed below:

Mol	Chain	Res	Type	Atoms	Z	Observed(°)	Ideal(°)
1	A	381	MET	CG-SD-CE	-5.40	91.56	100.20

There are no chirality outliers.

There are no planarity outliers.

5.2 Too-close contacts [i](#)

In the following table, the Non-H and H(model) columns list the number of non-hydrogen atoms and hydrogen atoms in the chain respectively. The H(added) column lists the number of hydrogen atoms added and optimized by MolProbity. The Clashes column lists the number of clashes within the asymmetric unit, whereas Symm-Clashes lists symmetry-related clashes.

Mol	Chain	Non-H	H(model)	H(added)	Clashes	Symm-Clashes
1	A	2932	0	2926	83	0
2	B	2658	0	2628	25	0
3	A	53	33	32	0	0
4	A	16	22	22	4	0
5	A	48	64	60	8	0
5	B	30	40	40	1	0
6	A	1	0	0	0	0
6	B	1	0	0	0	0

Continued on next page...

Continued from previous page...

Mol	Chain	Non-H	H(model)	H(added)	Clashes	Symm-Clashes
7	A	84	0	0	1	0
7	B	118	0	0	1	0
All	All	5941	159	5708	108	0

The all-atom clashscore is defined as the number of clashes found per 1000 atoms (including hydrogen atoms). The all-atom clashscore for this structure is 9.

All (108) close contacts within the same asymmetric unit are listed below, sorted by their clash magnitude.

Atom-1	Atom-2	Interatomic distance (Å)	Clash overlap (Å)
1:A:289:ARG:HH22	4:A:402:1PE:H232	1.26	0.98
2:B:4:THR:HG22	2:B:7:GLU:HG3	1.41	0.97
1:A:289:ARG:HH21	4:A:402:1PE:H251	1.32	0.94
1:A:301:ASN:HB3	1:A:303:GLU:OE1	1.71	0.89
1:A:289:ARG:HH12	4:A:402:1PE:H222	1.39	0.87
1:A:89[A]:PHE:HZ	1:A:243:ILE:HB	1.40	0.85
1:A:17:ARG:HD3	1:A:79:GLU:OE1	1.78	0.83
1:A:62:GLU:N	1:A:62:GLU:OE1	2.10	0.83
1:A:28:GLU:OE1	1:A:41:ARG:NH1	2.14	0.80
1:A:243:ILE:HD11	1:A:299:VAL:HG11	1.61	0.80
1:A:20:PHE:CZ	1:A:80:VAL:HG12	2.18	0.79
1:A:304:LEU:HD21	1:A:309:ALA:HB2	1.66	0.78
1:A:245[B]:LEU:HD22	7:A:501:HOH:O	1.84	0.77
1:A:98:THR:HG22	1:A:236:THR:HG22	1.65	0.77
2:B:4:THR:HG22	2:B:7:GLU:CG	2.13	0.75
1:A:89[A]:PHE:CZ	1:A:243:ILE:HB	2.25	0.72
1:A:70:ILE:HG22	1:A:293[B]:TRP:CZ3	2.25	0.71
1:A:69:SER:O	1:A:73:GLN:HG3	1.89	0.71
2:B:4:THR:CG2	2:B:7:GLU:HG3	2.20	0.71
1:A:147:ASP:OD2	1:A:147:ASP:N	2.20	0.70
1:A:29:ARG:HB2	1:A:83:ALA:O	1.91	0.70
1:A:96:GLY:O	1:A:100:MET:HG3	1.93	0.68
1:A:251:ARG:HH22	5:A:410:GOL:H2	1.58	0.68
1:A:25:PRO:HG2	1:A:28:GLU:HB2	1.76	0.68
1:A:21:ASN:HA	1:A:24:LEU:HD22	1.75	0.67
1:A:29:ARG:HB2	1:A:84:GLY:HA3	1.78	0.65
1:A:25:PRO:CD	1:A:28:GLU:HB2	2.26	0.65
1:A:25:PRO:CG	1:A:28:GLU:HB2	2.28	0.64
2:B:4:THR:O	2:B:8:GLU:HG3	1.97	0.64
1:A:257:GLU:OE2	4:A:402:1PE:H131	1.99	0.62
1:A:231:TRP:O	1:A:235:THR:HG23	2.00	0.62

Continued on next page...

Continued from previous page...

Atom-1	Atom-2	Interatomic distance (Å)	Clash overlap (Å)
1:A:29:ARG:HG3	1:A:30:ARG:H	1.65	0.62
1:A:97:PRO:HA	1:A:100:MET:HE2	1.81	0.62
1:A:178:PRO:HB2	1:A:181:LYS:HG3	1.82	0.61
1:A:29:ARG:HG3	1:A:30:ARG:N	2.15	0.61
2:B:7:GLU:O	2:B:11:GLU:HG3	2.00	0.61
1:A:97:PRO:HB2	1:A:240:HIS:CE1	2.35	0.61
1:A:111:TYR:OH	1:A:222:GLU:OE2	2.19	0.61
1:A:90:VAL:O	1:A:94:THR:HB	2.01	0.60
1:A:25:PRO:HG2	1:A:28:GLU:CG	2.30	0.60
1:A:60:PRO:HG2	1:A:63:TYR:HD2	1.66	0.60
2:B:4:THR:HG22	2:B:7:GLU:OE2	2.02	0.59
1:A:364:GLY:H	5:A:405:GOL:H31	1.66	0.59
1:A:20:PHE:HZ	1:A:80:VAL:HG12	1.66	0.59
1:A:26:ALA:O	1:A:29:ARG:HG2	2.03	0.59
1:A:74:TYR:HH	1:A:296:THR:HG1	1.47	0.58
1:A:232:LYS:HE3	1:A:232:LYS:HA	1.85	0.57
1:A:105:GLU:O	1:A:109:LYS:HG2	2.04	0.57
5:A:408:GOL:H32	2:B:352:GLN:NE2	2.20	0.57
5:A:408:GOL:H32	2:B:352:GLN:HE21	1.70	0.57
1:A:126:TYR:HE2	1:A:237:GLN:NE2	2.04	0.55
1:A:101:LYS:HD3	1:A:102:TYR:CE2	2.42	0.55
1:A:361:THR:HG21	5:A:403:GOL:O2	2.05	0.55
2:B:17:ARG:NH2	2:B:77:GLU:OE2	2.41	0.54
1:A:47:LYS:O	1:A:47:LYS:HD2	2.08	0.54
1:A:25:PRO:HG2	1:A:28:GLU:CB	2.38	0.53
1:A:98:THR:HG21	1:A:237:GLN:HB3	1.89	0.53
1:A:304:LEU:CD2	1:A:309:ALA:HB2	2.36	0.52
1:A:28:GLU:O	1:A:32:VAL:HG22	2.10	0.52
1:A:232:LYS:HA	1:A:232:LYS:CE	2.39	0.52
1:A:189:PRO:HG2	1:A:192:ALA:HB2	1.91	0.51
1:A:31:ARG:O	1:A:34:GLU:HG2	2.10	0.50
1:A:21:ASN:HA	1:A:24:LEU:CD2	2.42	0.50
1:A:82:ARG:HA	5:A:409:GOL:H32	1.92	0.50
2:B:119:LEU:CD2	2:B:162:HIS:HB2	2.42	0.49
1:A:97:PRO:HA	1:A:100:MET:CE	2.42	0.49
1:A:106:GLU:H	1:A:106:GLU:CD	2.15	0.49
1:A:30:ARG:O	1:A:30:ARG:NH1	2.45	0.49
1:A:136:ALA:HB3	1:A:179:LYS:HE3	1.95	0.49
2:B:276:MET:HE2	7:B:578:HOH:O	2.12	0.49
5:A:403:GOL:H31	2:B:317:HIS:CG	2.47	0.48
2:B:328:TYR:CD1	2:B:329:PRO:HD2	2.49	0.48

Continued on next page...

Continued from previous page...

Atom-1	Atom-2	Interatomic distance (Å)	Clash overlap (Å)
1:A:304:LEU:HD21	1:A:309:ALA:CB	2.41	0.48
1:A:128:GLU:HG2	1:A:155:LYS:HD3	1.96	0.48
1:A:98:THR:HG22	1:A:236:THR:CG2	2.38	0.47
1:A:126:TYR:CE2	1:A:237:GLN:NE2	2.82	0.47
2:B:305:ASP:OD2	2:B:350:ASP:OD2	2.32	0.47
1:A:5:GLU:HB2	1:A:6:PRO:CD	2.45	0.47
1:A:62:GLU:H	1:A:62:GLU:CD	2.06	0.47
1:A:242:ARG:O	1:A:245[B]:LEU:HD13	2.16	0.46
1:A:110:LYS:HE3	1:A:111:TYR:CZ	2.52	0.45
1:A:294:LYS:HE2	1:A:294:LYS:HB3	1.81	0.45
1:A:110:LYS:HE3	1:A:111:TYR:OH	2.17	0.45
5:A:408:GOL:C3	2:B:352:GLN:HE21	2.30	0.45
2:B:76:GLU:HG2	2:B:80:ARG:NH1	2.32	0.45
2:B:163:LEU:HD22	2:B:201:LEU:HD11	1.99	0.44
2:B:328:TYR:CG	2:B:329:PRO:HD2	2.53	0.44
1:A:13:ARG:NH1	1:A:254:ARG:HH21	2.14	0.44
1:A:339:PRO:C	1:A:340:GLU:HG2	2.38	0.44
1:A:144:ARG:NH2	1:A:146:GLY:O	2.45	0.44
1:A:243:ILE:CD1	1:A:299:VAL:HG11	2.39	0.43
2:B:4:THR:N	2:B:7:GLU:OE2	2.50	0.43
1:A:25:PRO:HG2	1:A:28:GLU:HG3	2.00	0.43
2:B:86:PRO:HB3	2:B:156:SER:CB	2.49	0.43
1:A:242:ARG:O	1:A:245[B]:LEU:CD1	2.67	0.43
2:B:272:GLU:OE2	5:B:402:GOL:O1	2.34	0.43
2:B:99:GLU:O	2:B:99:GLU:HG3	2.18	0.42
1:A:25:PRO:HD2	1:A:28:GLU:HB2	1.99	0.42
1:A:313:LYS:HD2	1:A:370:LEU:CD1	2.50	0.42
1:A:29:ARG:CB	1:A:83:ALA:O	2.64	0.42
1:A:31:ARG:O	1:A:35:GLN:HG3	2.20	0.42
1:A:296:THR:HA	1:A:299:VAL:HG12	2.01	0.41
2:B:48:ALA:HB2	2:B:53:LEU:HD12	2.01	0.41
1:A:114:GLY:HA3	1:A:120:ILE:HD12	2.02	0.41
1:A:61:LYS:HA	1:A:65:GLY:O	2.20	0.41
2:B:214:ALA:O	2:B:217:PRO:HD2	2.19	0.41
2:B:4:THR:HG22	2:B:7:GLU:CD	2.41	0.40
1:A:70:ILE:CG2	1:A:293[B]:TRP:CZ3	3.02	0.40

There are no symmetry-related clashes.

5.3 Torsion angles [i](#)

5.3.1 Protein backbone [i](#)

In the following table, the Percentiles column shows the percent Ramachandran outliers of the chain as a percentile score with respect to all X-ray entries followed by that with respect to entries of similar resolution.

The Analysed column shows the number of residues for which the backbone conformation was analysed, and the total number of residues.

Mol	Chain	Analysed	Favoured	Allowed	Outliers	Percentiles	
1	A	381/407 (94%)	372 (98%)	8 (2%)	1 (0%)	41	37
2	B	360/364 (99%)	356 (99%)	4 (1%)	0	100	100
All	All	741/771 (96%)	728 (98%)	12 (2%)	1 (0%)	51	49

All (1) Ramachandran outliers are listed below:

Mol	Chain	Res	Type
1	A	25	PRO

5.3.2 Protein sidechains [i](#)

In the following table, the Percentiles column shows the percent sidechain outliers of the chain as a percentile score with respect to all X-ray entries followed by that with respect to entries of similar resolution.

The Analysed column shows the number of residues for which the sidechain conformation was analysed, and the total number of residues.

Mol	Chain	Analysed	Rotameric	Outliers	Percentiles	
1	A	301/321 (94%)	293 (97%)	8 (3%)	44	46
2	B	263/265 (99%)	258 (98%)	5 (2%)	57	61
All	All	564/586 (96%)	551 (98%)	13 (2%)	50	53

All (13) residues with a non-rotameric sidechain are listed below:

Mol	Chain	Res	Type
1	A	17	ARG
1	A	24	LEU
1	A	31	ARG
1	A	62	GLU
1	A	74	TYR

Continued on next page...

Continued from previous page...

Mol	Chain	Res	Type
1	A	144	ARG
1	A	147	ASP
1	A	383	ARG
2	B	80	ARG
2	B	85	VAL
2	B	201	LEU
2	B	249	ARG
2	B	254	ARG

Sometimes sidechains can be flipped to improve hydrogen bonding and reduce clashes. There are no such sidechains identified.

5.3.3 RNA [i](#)

There are no RNA molecules in this entry.

5.4 Non-standard residues in protein, DNA, RNA chains [i](#)

There are no non-standard protein/DNA/RNA residues in this entry.

5.5 Carbohydrates [i](#)

There are no monosaccharides in this entry.

5.6 Ligand geometry [i](#)

Of 17 ligands modelled in this entry, 2 are monoatomic - leaving 15 for Mogul analysis.

In the following table, the Counts columns list the number of bonds (or angles) for which Mogul statistics could be retrieved, the number of bonds (or angles) that are observed in the model and the number of bonds (or angles) that are defined in the Chemical Component Dictionary. The Link column lists molecule types, if any, to which the group is linked. The Z score for a bond length (or angle) is the number of standard deviations the observed value is removed from the expected value. A bond length (or angle) with $|Z| > 2$ is considered an outlier worth inspection. RMSZ is the root-mean-square of all Z scores of the bond lengths (or angles).

Mol	Type	Chain	Res	Link	Bond lengths			Bond angles		
					Counts	RMSZ	$\# Z > 2$	Counts	RMSZ	$\# Z > 2$
5	GOL	A	409	-	5,5,5	1.04	0	5,5,5	1.18	1 (20%)
5	GOL	B	405	-	5,5,5	0.98	0	5,5,5	0.84	0

Mol	Type	Chain	Res	Link	Bond lengths			Bond angles		
					Counts	RMSZ	# Z > 2	Counts	RMSZ	# Z > 2
5	GOL	A	408	-	5,5,5	1.07	0	5,5,5	0.46	0
5	GOL	A	407	-	5,5,5	1.01	0	5,5,5	0.91	0
5	GOL	A	410	-	5,5,5	1.50	1 (20%)	5,5,5	1.65	1 (20%)
5	GOL	A	403	-	5,5,5	1.08	0	5,5,5	0.55	0
5	GOL	B	401	-	5,5,5	1.06	0	5,5,5	1.43	1 (20%)
5	GOL	B	404	-	5,5,5	1.23	1 (20%)	5,5,5	1.19	1 (20%)
3	FDA	A	401	-	52,58,58	1.79	14 (26%)	60,89,89	1.28	7 (11%)
5	GOL	B	402	-	5,5,5	0.43	0	5,5,5	1.04	1 (20%)
5	GOL	A	404	-	5,5,5	1.15	1 (20%)	5,5,5	1.32	1 (20%)
5	GOL	A	406	-	5,5,5	1.39	1 (20%)	5,5,5	1.39	1 (20%)
4	1PE	A	402	-	15,15,15	0.57	0	14,14,14	0.29	0
5	GOL	B	403	-	5,5,5	0.93	0	5,5,5	0.93	0
5	GOL	A	405	-	5,5,5	0.89	0	5,5,5	0.65	0

In the following table, the Chirals column lists the number of chiral outliers, the number of chiral centers analysed, the number of these observed in the model and the number defined in the Chemical Component Dictionary. Similar counts are reported in the Torsion and Rings columns. '-' means no outliers of that kind were identified.

Mol	Type	Chain	Res	Link	Chirals	Torsions	Rings
5	GOL	A	409	-	-	2/4/4/4	-
5	GOL	B	405	-	-	3/4/4/4	-
5	GOL	A	408	-	-	2/4/4/4	-
5	GOL	A	407	-	-	2/4/4/4	-
5	GOL	A	410	-	-	3/4/4/4	-
5	GOL	A	403	-	-	0/4/4/4	-
5	GOL	B	401	-	-	2/4/4/4	-
5	GOL	B	404	-	-	4/4/4/4	-
3	FDA	A	401	-	-	0/30/50/50	0/6/6/6
5	GOL	B	402	-	-	0/4/4/4	-
5	GOL	A	404	-	-	2/4/4/4	-
5	GOL	A	406	-	-	2/4/4/4	-
4	1PE	A	402	-	-	8/13/13/13	-
5	GOL	B	403	-	-	2/4/4/4	-
5	GOL	A	405	-	-	0/4/4/4	-

All (18) bond length outliers are listed below:

Mol	Chain	Res	Type	Atoms	Z	Observed(Å)	Ideal(Å)
3	A	401	FDA	C7M-C7	-4.32	1.42	1.51
3	A	401	FDA	O4B-C1B	4.06	1.46	1.41
3	A	401	FDA	O2'-C2'	-3.91	1.35	1.43
3	A	401	FDA	C2'-C3'	3.48	1.60	1.53
3	A	401	FDA	C6-C5X	-2.86	1.35	1.39
3	A	401	FDA	C5'-C4'	2.78	1.55	1.51
3	A	401	FDA	O4B-C4B	2.72	1.51	1.45
5	A	406	GOL	O2-C2	-2.69	1.35	1.43
3	A	401	FDA	PA-O5B	2.61	1.69	1.59
5	A	410	GOL	O2-C2	-2.53	1.35	1.43
3	A	401	FDA	C2A-N3A	2.43	1.36	1.32
3	A	401	FDA	C8-C7	-2.37	1.35	1.40
3	A	401	FDA	C2-N1	2.31	1.41	1.37
3	A	401	FDA	C1'-C2'	2.28	1.55	1.52
3	A	401	FDA	O2B-C2B	2.22	1.48	1.43
5	A	404	GOL	O2-C2	-2.16	1.37	1.43
5	B	404	GOL	O2-C2	-2.10	1.37	1.43
3	A	401	FDA	O4'-C4'	-2.05	1.39	1.43

All (14) bond angle outliers are listed below:

Mol	Chain	Res	Type	Atoms	Z	Observed(°)	Ideal(°)
3	A	401	FDA	P-O3P-PA	-3.28	121.58	132.83
5	A	410	GOL	C3-C2-C1	-3.17	99.40	111.70
5	A	406	GOL	C3-C2-C1	-2.77	100.94	111.70
5	B	401	GOL	C3-C2-C1	-2.55	101.78	111.70
5	A	404	GOL	C3-C2-C1	-2.49	102.01	111.70
3	A	401	FDA	PA-O5B-C5B	-2.41	107.58	121.68
3	A	401	FDA	C2A-N1A-C6A	-2.40	114.65	118.75
5	B	404	GOL	C3-C2-C1	-2.36	102.52	111.70
3	A	401	FDA	C1'-C2'-C3'	-2.22	103.58	109.79
5	A	409	GOL	C3-C2-C1	-2.15	103.36	111.70
3	A	401	FDA	O4'-C4'-C5'	2.14	114.72	109.92
3	A	401	FDA	P-O5'-C5'	-2.12	109.24	121.68
3	A	401	FDA	O4B-C1B-C2B	-2.06	103.92	106.93
5	B	402	GOL	C3-C2-C1	-2.05	103.73	111.70

There are no chirality outliers.

All (32) torsion outliers are listed below:

Mol	Chain	Res	Type	Atoms
5	A	404	GOL	C1-C2-C3-O3

Continued on next page...

Continued from previous page...

Mol	Chain	Res	Type	Atoms
5	A	406	GOL	C1-C2-C3-O3
5	A	407	GOL	O1-C1-C2-C3
5	A	408	GOL	C1-C2-C3-O3
5	A	409	GOL	O1-C1-C2-C3
5	A	410	GOL	C1-C2-C3-O3
5	B	401	GOL	O1-C1-C2-C3
5	A	408	GOL	O2-C2-C3-O3
4	A	402	1PE	OH7-C16-C26-OH6
5	B	403	GOL	O1-C1-C2-C3
5	B	404	GOL	C1-C2-C3-O3
5	B	405	GOL	O1-C1-C2-C3
5	A	406	GOL	O2-C2-C3-O3
5	A	407	GOL	O1-C1-C2-O2
5	A	409	GOL	O1-C1-C2-O2
5	A	410	GOL	O2-C2-C3-O3
4	A	402	1PE	OH2-C12-C22-OH3
5	B	401	GOL	O1-C1-C2-O2
5	A	404	GOL	O2-C2-C3-O3
4	A	402	1PE	C15-C25-OH5-C14
4	A	402	1PE	OH4-C13-C23-OH3
5	B	404	GOL	O1-C1-C2-O2
4	A	402	1PE	C12-C22-OH3-C23
5	B	405	GOL	C1-C2-C3-O3
5	B	405	GOL	O1-C1-C2-O2
4	A	402	1PE	C14-C24-OH4-C13
5	B	404	GOL	O1-C1-C2-C3
4	A	402	1PE	OH6-C15-C25-OH5
5	B	403	GOL	O1-C1-C2-O2
5	A	410	GOL	O1-C1-C2-C3
4	A	402	1PE	C23-C13-OH4-C24
5	B	404	GOL	O2-C2-C3-O3

There are no ring outliers.

7 monomers are involved in 13 short contacts:

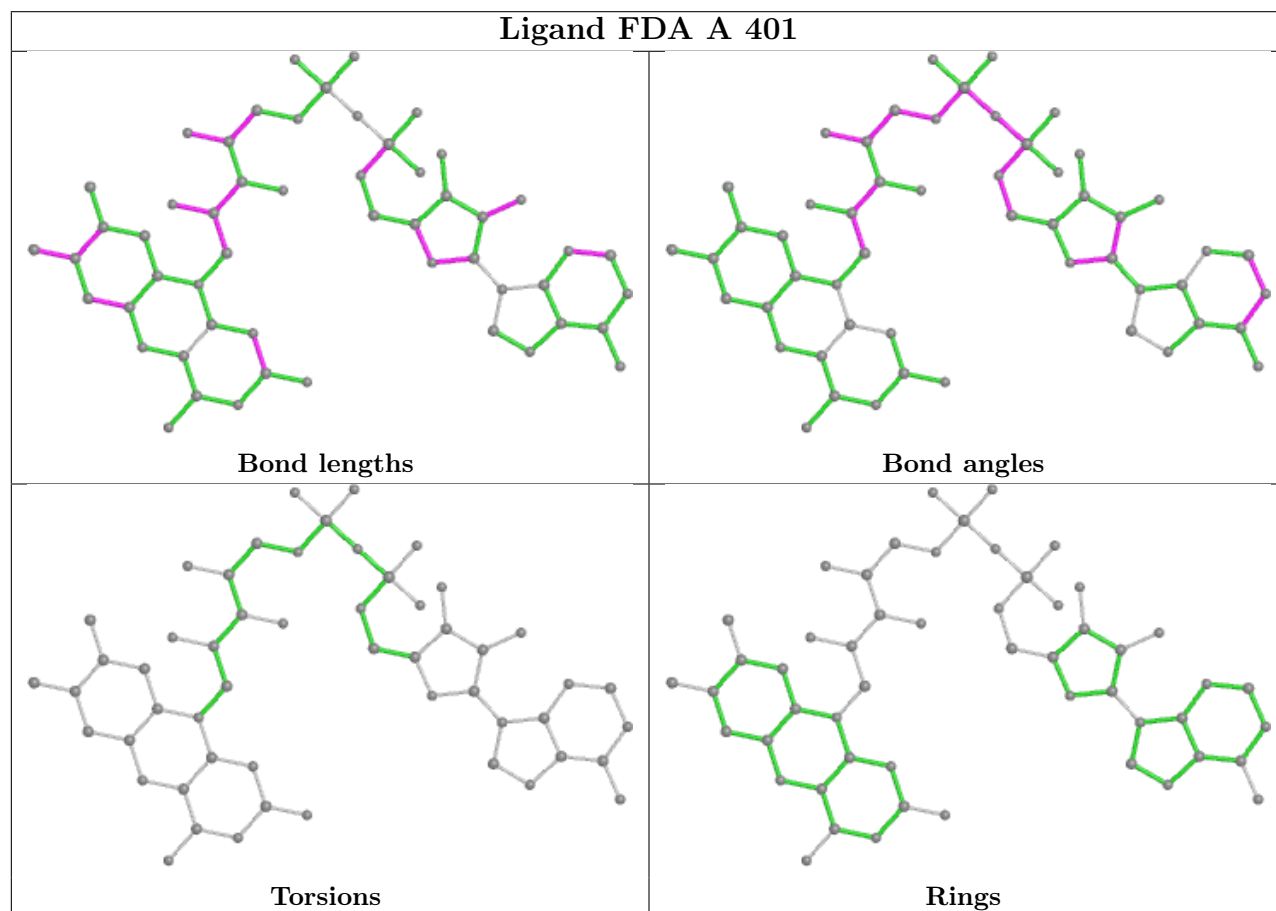
Mol	Chain	Res	Type	Clashes	Symm-Clashes
5	A	409	GOL	1	0
5	A	408	GOL	3	0
5	A	410	GOL	1	0
5	A	403	GOL	2	0
5	B	402	GOL	1	0
4	A	402	1PE	4	0

Continued on next page...

Continued from previous page...

Mol	Chain	Res	Type	Clashes	Symm-Clashes
5	A	405	GOL	1	0

The following is a two-dimensional graphical depiction of Mogul quality analysis of bond lengths, bond angles, torsion angles, and ring geometry for all instances of the Ligand of Interest. In addition, ligands with molecular weight > 250 and outliers as shown on the validation Tables will also be included. For torsion angles, if less than 5% of the Mogul distribution of torsion angles is within 10 degrees of the torsion angle in question, then that torsion angle is considered an outlier. Any bond that is central to one or more torsion angles identified as an outlier by Mogul will be highlighted in the graph. For rings, the root-mean-square deviation (RMSD) between the ring in question and similar rings identified by Mogul is calculated over all ring torsion angles. If the average RMSD is greater than 60 degrees and the minimal RMSD between the ring in question and any Mogul-identified rings is also greater than 60 degrees, then that ring is considered an outlier. The outliers are highlighted in purple. The color gray indicates Mogul did not find sufficient equivalents in the CSD to analyse the geometry.



5.7 Other polymers [i](#)

There are no such residues in this entry.

5.8 Polymer linkage issues

There are no chain breaks in this entry.

6 Fit of model and data [i](#)

6.1 Protein, DNA and RNA chains [i](#)

In the following table, the column labelled '#RSRZ > 2' contains the number (and percentage) of RSRZ outliers, followed by percent RSRZ outliers for the chain as percentile scores relative to all X-ray entries and entries of similar resolution. The OWAB column contains the minimum, median, 95th percentile and maximum values of the occupancy-weighted average B-factor per residue. The column labelled 'Q < 0.9' lists the number of (and percentage) of residues with an average occupancy less than 0.9.

Mol	Chain	Analysed	<RSRZ>	#RSRZ>2	OWAB(Å ²)	Q<0.9
1	A	380/407 (93%)	0.86	62 (16%) 1 1	34, 60, 98, 144	6 (1%)
2	B	361/364 (99%)	0.48	24 (6%) 18 17	34, 46, 77, 111	0
All	All	741/771 (96%)	0.67	86 (11%) 4 4	34, 50, 91, 144	6 (0%)

All (86) RSRZ outliers are listed below:

Mol	Chain	Res	Type	RSRZ
1	A	26	ALA	9.0
1	A	27	ASP	8.3
2	B	4	THR	7.8
1	A	24	LEU	7.8
1	A	25	PRO	6.5
2	B	143	ASP	5.6
1	A	293[A]	TRP	5.4
1	A	32	VAL	5.3
1	A	116	LEU	5.2
1	A	65	GLY	5.1
1	A	60	PRO	4.9
1	A	175	PRO	4.6
1	A	245[A]	LEU	4.1
1	A	59	TRP	3.9
2	B	5	LEU	3.9
1	A	148	GLU	3.7
2	B	7	GLU	3.7
1	A	147	ASP	3.6
1	A	104	THR	3.6
1	A	31	ARG	3.5
1	A	109	LYS	3.5
1	A	302	ASP	3.4
2	B	309	LEU	3.4
1	A	299	VAL	3.4

Continued on next page...

Continued from previous page...

Mol	Chain	Res	Type	RSRZ
1	A	34	GLU	3.3
1	A	177	ALA	3.3
2	B	322	ILE	3.3
1	A	300	GLU	3.2
1	A	48	MET	3.2
1	A	5	GLU	3.2
1	A	70	ILE	3.2
1	A	22	GLY	3.1
2	B	351	LEU	3.1
2	B	311	VAL	3.1
1	A	226	GLU	3.1
1	A	63	TYR	3.1
2	B	102	THR	3.0
2	B	8	GLU	3.0
1	A	30	ARG	3.0
1	A	61	LYS	2.9
1	A	186	ILE	2.9
2	B	206	VAL	2.8
1	A	225	GLY	2.8
1	A	23	LEU	2.7
2	B	330	ILE	2.7
1	A	74	TYR	2.7
2	B	312	VAL	2.6
1	A	98	THR	2.6
1	A	232	LYS	2.5
2	B	205	ALA	2.5
2	B	328	TYR	2.5
1	A	218	VAL	2.4
2	B	103	ALA	2.4
1	A	321	ILE	2.4
1	A	99	LEU	2.3
1	A	106	GLU	2.3
1	A	102	TYR	2.3
1	A	68	ARG	2.3
1	A	113	PRO	2.3
2	B	11	GLU	2.3
1	A	35	GLN	2.3
2	B	185	LEU	2.3
1	A	216	VAL	2.3
1	A	111	TYR	2.2
1	A	181	LYS	2.2
1	A	41	ARG	2.2

Continued on next page...

Continued from previous page...

Mol	Chain	Res	Type	RSRZ
1	A	29	ARG	2.2
1	A	178	PRO	2.2
1	A	203	VAL	2.2
2	B	303	TRP	2.1
2	B	315	THR	2.1
2	B	329	PRO	2.1
1	A	37	VAL	2.1
1	A	303	GLU	2.1
1	A	62	GLU	2.1
1	A	56	GLY	2.1
1	A	176	GLU	2.1
2	B	107	ASP	2.0
1	A	100	MET	2.0
1	A	223	VAL	2.0
2	B	139	VAL	2.0
1	A	144	ARG	2.0
1	A	145	ASP	2.0
2	B	313	HIS	2.0
1	A	227	ILE	2.0
1	A	84	GLY	2.0

6.2 Non-standard residues in protein, DNA, RNA chains [i](#)

There are no non-standard protein/DNA/RNA residues in this entry.

6.3 Carbohydrates [i](#)

There are no monosaccharides in this entry.

6.4 Ligands [i](#)

In the following table, the Atoms column lists the number of modelled atoms in the group and the number defined in the chemical component dictionary. The B-factors column lists the minimum, median, 95th percentile and maximum values of B factors of atoms in the group. The column labelled 'Q< 0.9' lists the number of atoms with occupancy less than 0.9.

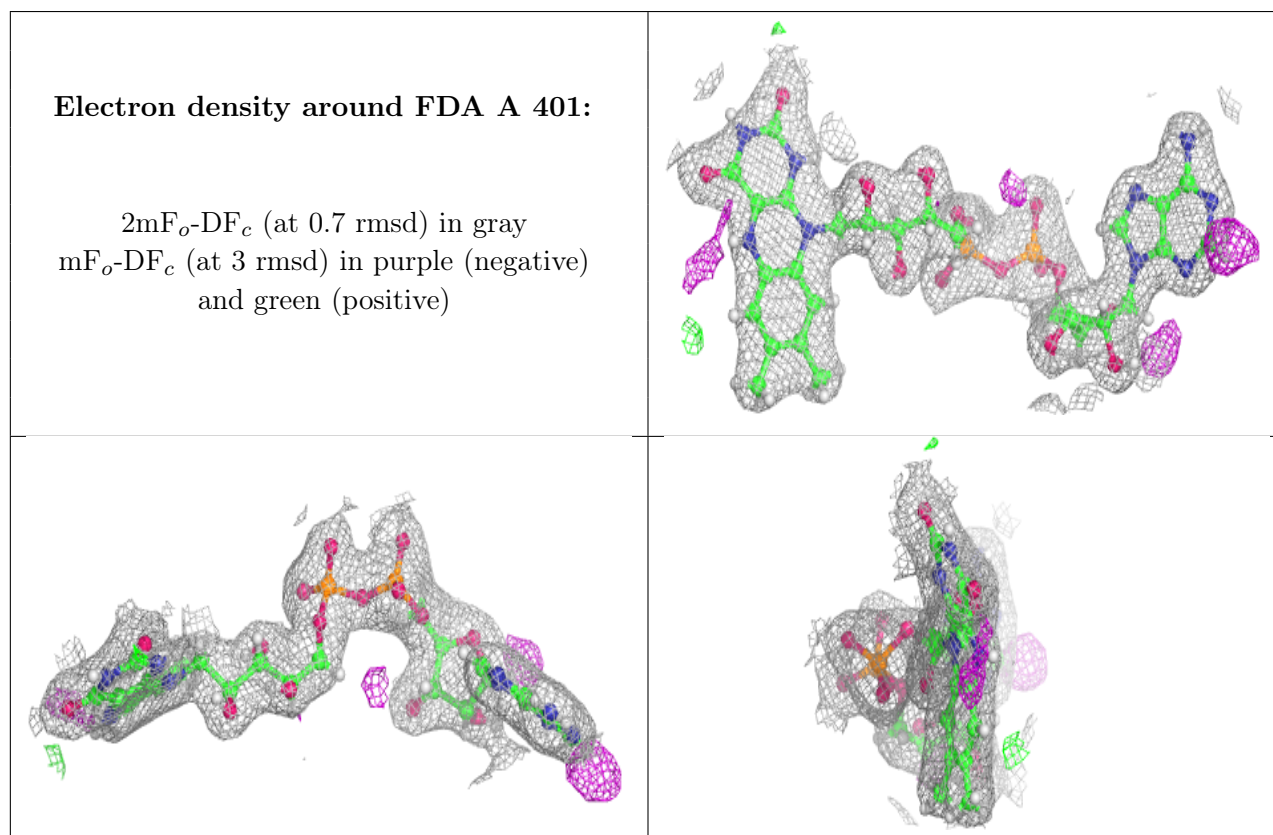
Mol	Type	Chain	Res	Atoms	RSCC	RSR	B-factors(Å ²)	Q<0.9
5	GOL	A	408	6/6	0.25	0.30	81,98,103,104	0
5	GOL	A	409	6/6	0.58	0.17	89,106,123,127	0
5	GOL	A	403	6/6	0.60	0.36	77,93,97,99	0

Continued on next page...

Continued from previous page...

Mol	Type	Chain	Res	Atoms	RSCC	RSR	B-factors(\AA^2)	Q<0.9
5	GOL	A	404	6/6	0.60	0.30	92,111,113,114	0
5	GOL	A	410	6/6	0.62	0.24	96,115,123,124	0
5	GOL	B	405	6/6	0.64	0.50	100,120,124,124	0
5	GOL	B	403	6/6	0.67	0.44	71,85,96,96	0
5	GOL	A	405	6/6	0.71	0.15	74,89,92,94	0
5	GOL	A	407	6/6	0.72	0.43	85,102,105,106	0
5	GOL	B	401	6/6	0.75	0.24	59,71,83,85	0
4	1PE	A	402	16/16	0.78	0.21	72,88,112,112	0
6	CL	B	406	1/1	0.78	0.68	168,168,168,168	0
5	GOL	B	402	6/6	0.79	0.28	61,74,87,89	0
5	GOL	B	404	6/6	0.83	0.24	78,94,104,105	0
5	GOL	A	406	6/6	0.92	0.21	78,94,100,100	0
6	CL	A	411	1/1	0.93	0.13	60,60,60,60	0
3	FDA	A	401	53/53	0.96	0.11	35,41,49,52	0

The following is a graphical depiction of the model fit to experimental electron density of all instances of the Ligand of Interest. In addition, ligands with molecular weight > 250 and outliers as shown on the geometry validation Tables will also be included. Each fit is shown from different orientation to approximate a three-dimensional view.



6.5 Other polymers [i](#)

There are no such residues in this entry.