



Full wwPDB X-ray Structure Validation Report ⓘ

Jun 8, 2022 – 01:16 pm BST

PDB ID : 6YKZ
Title : Crystal structure of YTHDC1 with compound DHU_DC1_234
Authors : Bedi, R.K.; Huang, D.; Wiedmer, L.; Caffisch, A.
Deposited on : 2020-04-06
Resolution : 1.20 Å(reported)

This is a Full wwPDB X-ray Structure Validation Report for a publicly released PDB entry.

We welcome your comments at validation@mail.wwpdb.org

A user guide is available at

<https://www.wwpdb.org/validation/2017/XrayValidationReportHelp>

with specific help available everywhere you see the ⓘ symbol.

The following versions of software and data (see [references ⓘ](#)) were used in the production of this report:

MolProbity : 4.02b-467
Mogul : 1.8.4, CSD as541be (2020)
Xtriage (Phenix) : 1.13
EDS : 2.28.1
buster-report : 1.1.7 (2018)
Percentile statistics : 20191225.v01 (using entries in the PDB archive December 25th 2019)
Refmac : 5.8.0267
CCP4 : 7.1.010 (Gargrove)
Ideal geometry (proteins) : Engh & Huber (2001)
Ideal geometry (DNA, RNA) : Parkinson et al. (1996)
Validation Pipeline (wwPDB-VP) : 2.28.1

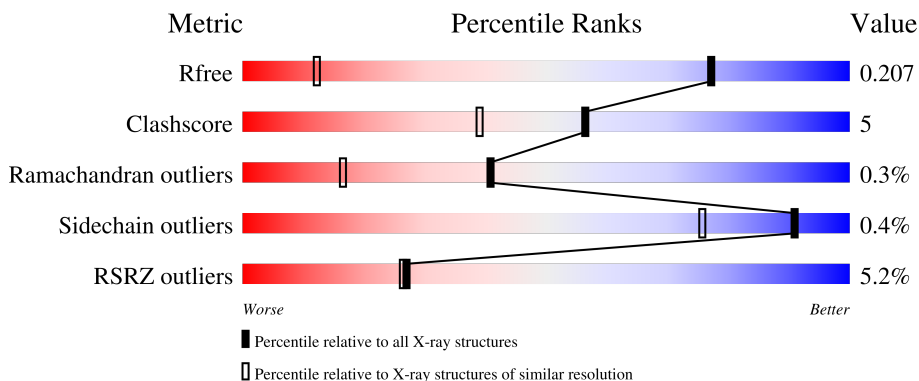
1 Overall quality at a glance

The following experimental techniques were used to determine the structure:

X-RAY DIFFRACTION

The reported resolution of this entry is 1.20 Å.

Percentile scores (ranging between 0-100) for global validation metrics of the entry are shown in the following graphic. The table shows the number of entries on which the scores are based.



Metric	Whole archive (#Entries)	Similar resolution (#Entries, resolution range(Å))
R_{free}	130704	1223 (1.22-1.18)
Clashscore	141614	1286 (1.22-1.18)
Ramachandran outliers	138981	1240 (1.22-1.18)
Sidechain outliers	138945	1239 (1.22-1.18)
RSRZ outliers	127900	1200 (1.22-1.18)

The table below summarises the geometric issues observed across the polymeric chains and their fit to the electron density. The red, orange, yellow and green segments of the lower bar indicate the fraction of residues that contain outliers for ≥ 3 , 2, 1 and 0 types of geometric quality criteria respectively. A grey segment represents the fraction of residues that are not modelled. The numeric value for each fraction is indicated below the corresponding segment, with a dot representing fractions $\leq 5\%$. The upper red bar (where present) indicates the fraction of residues that have poor fit to the electron density. The numeric value is given above the bar.

Mol	Chain	Length	Quality of chain
1	A	183	 5% 82% 8% 10%
1	B	183	 4% 84% 5% 10%

The following table lists non-polymeric compounds, carbohydrate monomers and non-standard residues in protein, DNA, RNA chains that are outliers for geometric or electron-density-fit criteria:

Mol	Type	Chain	Res	Chirality	Geometry	Clashes	Electron density
3	SO4	B	604	-	-	X	-

2 Entry composition i

There are 4 unique types of molecules in this entry. The entry contains 3382 atoms, of which 0 are hydrogens and 0 are deuteriums.

In the tables below, the ZeroOcc column contains the number of atoms modelled with zero occupancy, the AltConf column contains the number of residues with at least one atom in alternate conformation and the Trace column contains the number of residues modelled with at most 2 atoms.

- Molecule 1 is a protein called YTHDC1.

Mol	Chain	Residues	Atoms					ZeroOcc	AltConf	Trace
			Total	C	N	O	S			
1	A	165	1315	856	227	227	5	0	7	0
1	B	164	1327	863	224	234	6	0	10	0

There are 36 discrepancies between the modelled and reference sequences:

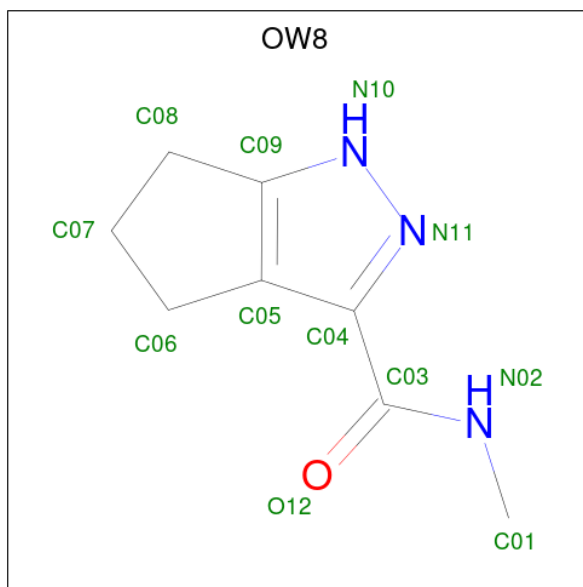
Chain	Residue	Modelled	Actual	Comment	Reference
A	327	MET	-	initiating methionine	UNP Q96MU7
A	328	HIS	-	expression tag	UNP Q96MU7
A	329	HIS	-	expression tag	UNP Q96MU7
A	330	HIS	-	expression tag	UNP Q96MU7
A	331	HIS	-	expression tag	UNP Q96MU7
A	332	HIS	-	expression tag	UNP Q96MU7
A	333	HIS	-	expression tag	UNP Q96MU7
A	334	SER	-	expression tag	UNP Q96MU7
A	335	SER	-	expression tag	UNP Q96MU7
A	336	GLY	-	expression tag	UNP Q96MU7
A	337	ARG	-	expression tag	UNP Q96MU7
A	338	GLU	-	expression tag	UNP Q96MU7
A	339	ASN	-	expression tag	UNP Q96MU7
A	340	LEU	-	expression tag	UNP Q96MU7
A	341	TYR	-	expression tag	UNP Q96MU7
A	342	PHE	-	expression tag	UNP Q96MU7
A	343	GLN	-	expression tag	UNP Q96MU7
A	344	GLY	-	expression tag	UNP Q96MU7
B	327	MET	-	initiating methionine	UNP Q96MU7
B	328	HIS	-	expression tag	UNP Q96MU7
B	329	HIS	-	expression tag	UNP Q96MU7
B	330	HIS	-	expression tag	UNP Q96MU7
B	331	HIS	-	expression tag	UNP Q96MU7
B	332	HIS	-	expression tag	UNP Q96MU7
B	333	HIS	-	expression tag	UNP Q96MU7

Continued on next page...

Continued from previous page...

Chain	Residue	Modelled	Actual	Comment	Reference
B	334	SER	-	expression tag	UNP Q96MU7
B	335	SER	-	expression tag	UNP Q96MU7
B	336	GLY	-	expression tag	UNP Q96MU7
B	337	ARG	-	expression tag	UNP Q96MU7
B	338	GLU	-	expression tag	UNP Q96MU7
B	339	ASN	-	expression tag	UNP Q96MU7
B	340	LEU	-	expression tag	UNP Q96MU7
B	341	TYR	-	expression tag	UNP Q96MU7
B	342	PHE	-	expression tag	UNP Q96MU7
B	343	GLN	-	expression tag	UNP Q96MU7
B	344	GLY	-	expression tag	UNP Q96MU7

- Molecule 2 is {N}-methyl-1,4,5,6-tetrahydrocyclopenta[c]pyrazole-3-carboxamide (three-letter code: OW8) (formula: C₈H₁₁N₃O) (labeled as "Ligand of Interest" by depositor).



Mol	Chain	Residues	Atoms				ZeroOcc	AltConf
2	A	1	Total	C	N	O	0	0
			12	8	3	1		
2	B	1	Total	C	N	O	0	0
			12	8	3	1		

- Molecule 3 is SULFATE ION (three-letter code: SO4) (formula: O₄S).



Mol	Chain	Residues	Atoms			ZeroOcc	AltConf
3	A	1	Total	O	S	0	0
			5	4	1		
3	A	1	Total	O	S	0	0
			5	4	1		
3	A	1	Total	O	S	0	0
			5	4	1		
3	A	1	Total	O	S	0	0
			5	4	1		
3	B	1	Total	O	S	0	0
			5	4	1		
3	B	1	Total	O	S	0	0
			5	4	1		
3	B	1	Total	O	S	0	0
			5	4	1		

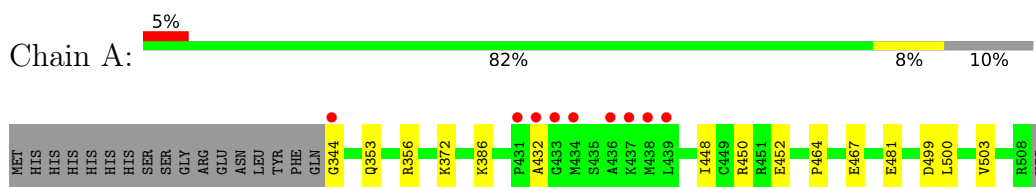
- Molecule 4 is water.

Mol	Chain	Residues	Atoms		ZeroOcc	AltConf
4	A	352	Total	O	0	0
			352	352		
4	B	324	Total	O	0	0
			324	324		

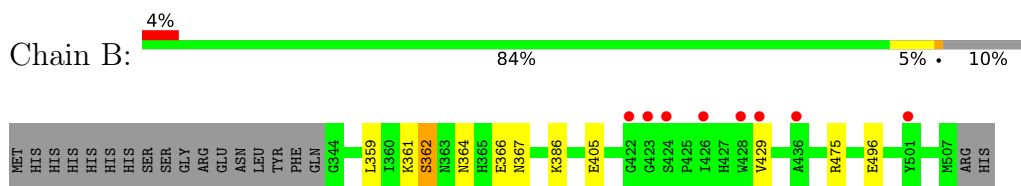
3 Residue-property plots [i](#)

These plots are drawn for all protein, RNA, DNA and oligosaccharide chains in the entry. The first graphic for a chain summarises the proportions of the various outlier classes displayed in the second graphic. The second graphic shows the sequence view annotated by issues in geometry and electron density. Residues are color-coded according to the number of geometric quality criteria for which they contain at least one outlier: green = 0, yellow = 1, orange = 2 and red = 3 or more. A red dot above a residue indicates a poor fit to the electron density ($RSRZ > 2$). Stretches of 2 or more consecutive residues without any outlier are shown as a green connector. Residues present in the sample, but not in the model, are shown in grey.

- Molecule 1: YTHDC1



- Molecule 1: YTHDC1



4 Data and refinement statistics

Property	Value	Source
Space group	P 1 21 1	Depositor
Cell constants a, b, c, α , β , γ	39.75Å 103.61Å 42.31Å 90.00° 105.94° 90.00°	Depositor
Resolution (Å)	40.68 – 1.20 40.68 – 1.20	Depositor EDS
% Data completeness (in resolution range)	99.0 (40.68-1.20) 99.0 (40.68-1.20)	Depositor EDS
R_{merge}	(Not available)	Depositor
R_{sym}	(Not available)	Depositor
$\langle I/\sigma(I) \rangle$ ¹	2.14 (at 1.20Å)	Xtriage
Refinement program	PHENIX 1.17.1_3660	Depositor
R, R_{free}	0.190 , 0.207 0.190 , 0.207	Depositor DCC
R_{free} test set	5043 reflections (5.00%)	wwPDB-VP
Wilson B-factor (Å ²)	12.6	Xtriage
Anisotropy	0.256	Xtriage
Bulk solvent k_{sol} (e/Å ³), B_{sol} (Å ²)	(Not available) , (Not available)	EDS
L-test for twinning ²	$\langle L \rangle = 0.50$, $\langle L^2 \rangle = 0.34$	Xtriage
Estimated twinning fraction	No twinning to report.	Xtriage
F_o, F_c correlation	0.97	EDS
Total number of atoms	3382	wwPDB-VP
Average B, all atoms (Å ²)	18.0	wwPDB-VP

Xtriage's analysis on translational NCS is as follows: *The largest off-origin peak in the Patterson function is 6.31% of the height of the origin peak. No significant pseudotranslation is detected.*

¹Intensities estimated from amplitudes.

²Theoretical values of $\langle |L| \rangle$, $\langle L^2 \rangle$ for acentric reflections are 0.5, 0.333 respectively for untwinned datasets, and 0.375, 0.2 for perfectly twinned datasets.

5 Model quality

5.1 Standard geometry

Bond lengths and bond angles in the following residue types are not validated in this section: OW8, SO4

The Z score for a bond length (or angle) is the number of standard deviations the observed value is removed from the expected value. A bond length (or angle) with $|Z| > 5$ is considered an outlier worth inspection. RMSZ is the root-mean-square of all Z scores of the bond lengths (or angles).

Mol	Chain	Bond lengths		Bond angles	
		RMSZ	# Z >5	RMSZ	# Z >5
1	A	0.33	0/1370	0.53	0/1852
1	B	0.31	0/1392	0.54	0/1878
All	All	0.32	0/2762	0.53	0/3730

There are no bond length outliers.

There are no bond angle outliers.

There are no chirality outliers.

There are no planarity outliers.

5.2 Too-close contacts

In the following table, the Non-H and H(model) columns list the number of non-hydrogen atoms and hydrogen atoms in the chain respectively. The H(added) column lists the number of hydrogen atoms added and optimized by MolProbity. The Clashes column lists the number of clashes within the asymmetric unit, whereas Symm-Clashes lists symmetry-related clashes.

Mol	Chain	Non-H	H(model)	H(added)	Clashes	Symm-Clashes
1	A	1315	0	1321	13	0
1	B	1327	0	1344	14	0
2	A	12	0	0	0	0
2	B	12	0	0	0	0
3	A	20	0	0	0	0
3	B	20	0	0	3	0
4	A	352	0	0	9	7
4	B	324	0	0	10	5
All	All	3382	0	2665	27	7

The all-atom clashscore is defined as the number of clashes found per 1000 atoms (including hydrogen atoms). The all-atom clashscore for this structure is 5.

All (27) close contacts within the same asymmetric unit are listed below, sorted by their clash magnitude.

Atom-1	Atom-2	Interatomic distance (Å)	Clash overlap (Å)
1:A:452[A]:GLU:OE1	4:A:701:HOH:O	1.80	0.98
3:B:604:SO4:O1	4:B:702:HOH:O	2.10	0.69
1:A:386:LYS:NZ	4:A:706:HOH:O	2.30	0.64
1:B:405:GLU:N	3:B:604:SO4:O4	2.33	0.62
1:A:353:GLN:NE2	4:A:708:HOH:O	2.34	0.61
1:A:372:LYS:O	1:A:450[A]:ARG:NH2	2.30	0.58
1:A:499:ASP:O	4:A:703:HOH:O	2.18	0.55
1:B:362:SER:OG	4:B:701:HOH:O	1.93	0.54
1:A:452[A]:GLU:HG3	4:A:935:HOH:O	2.07	0.53
1:A:344:GLY:N	4:A:712:HOH:O	2.44	0.51
1:B:386[B]:LYS:NZ	4:B:711:HOH:O	2.43	0.49
1:A:503:VAL:HG23	4:A:703:HOH:O	2.11	0.48
1:B:359:LEU:HD21	1:B:361[B]:LYS:HD3	1.96	0.48
1:B:362:SER:HB3	4:B:773:HOH:O	2.16	0.46
1:B:496[B]:GLU:HG2	4:B:963:HOH:O	2.16	0.46
1:B:367[B]:ASN:HB2	4:B:701:HOH:O	2.15	0.45
1:A:448[B]:ILE:HG23	1:A:500:LEU:HD21	1.98	0.45
1:A:356:ARG:HD2	4:A:702:HOH:O	2.17	0.45
1:B:496[B]:GLU:HG3	4:B:835:HOH:O	2.18	0.44
1:A:464:PRO:HD2	1:A:481:GLU:HB3	1.99	0.43
1:B:367[B]:ASN:OD1	1:B:429:VAL:HB	2.18	0.42
1:B:475:ARG:HD3	3:B:605:SO4:O4	2.18	0.42
1:B:364:ASN:OD1	4:B:704:HOH:O	2.21	0.42
1:A:450[A]:ARG:HD2	4:A:705:HOH:O	2.19	0.42
1:A:467:GLU:O	1:B:366[B]:GLU:HG3	2.19	0.41
1:B:367[A]:ASN:HB2	4:B:701:HOH:O	2.21	0.41
1:B:361[B]:LYS:NZ	4:B:703:HOH:O	2.26	0.40

All (7) symmetry-related close contacts are listed below. The label for Atom-2 includes the symmetry operator and encoded unit-cell translations to be applied.

Atom-1	Atom-2	Interatomic distance (Å)	Clash overlap (Å)
4:A:907:HOH:O	4:B:706:HOH:O[1_556]	2.09	0.11
4:A:902:HOH:O	4:B:918:HOH:O[1_556]	2.10	0.10
4:A:717:HOH:O	4:B:720:HOH:O[2_545]	2.11	0.09
4:A:880:HOH:O	4:A:904:HOH:O[1_655]	2.13	0.07
4:A:950:HOH:O	4:A:1023:HOH:O[1_655]	2.13	0.07
4:A:1002:HOH:O	4:B:1020:HOH:O[1_556]	2.17	0.03
4:A:894:HOH:O	4:B:754:HOH:O[2_645]	2.19	0.01

5.3 Torsion angles [i](#)

5.3.1 Protein backbone [i](#)

In the following table, the Percentiles column shows the percent Ramachandran outliers of the chain as a percentile score with respect to all X-ray entries followed by that with respect to entries of similar resolution.

The Analysed column shows the number of residues for which the backbone conformation was analysed, and the total number of residues.

Mol	Chain	Analysed	Favoured	Allowed	Outliers	Percentiles	
1	A	170/183 (93%)	168 (99%)	1 (1%)	1 (1%)	25	5
1	B	172/183 (94%)	172 (100%)	0	0	100	100
All	All	342/366 (93%)	340 (99%)	1 (0%)	1 (0%)	41	16

All (1) Ramachandran outliers are listed below:

Mol	Chain	Res	Type
1	A	432	ALA

5.3.2 Protein sidechains [i](#)

In the following table, the Percentiles column shows the percent sidechain outliers of the chain as a percentile score with respect to all X-ray entries followed by that with respect to entries of similar resolution.

The Analysed column shows the number of residues for which the sidechain conformation was analysed, and the total number of residues.

Mol	Chain	Analysed	Rotameric	Outliers	Percentiles	
1	A	139/161 (86%)	139 (100%)	0	100	100
1	B	144/161 (89%)	143 (99%)	1 (1%)	84	59
All	All	283/322 (88%)	282 (100%)	1 (0%)	91	76

All (1) residues with a non-rotameric sidechain are listed below:

Mol	Chain	Res	Type
1	B	362	SER

Sometimes sidechains can be flipped to improve hydrogen bonding and reduce clashes. There are no such sidechains identified.

5.3.3 RNA [i](#)

There are no RNA molecules in this entry.

5.4 Non-standard residues in protein, DNA, RNA chains [i](#)

There are no non-standard protein/DNA/RNA residues in this entry.

5.5 Carbohydrates [i](#)

There are no monosaccharides in this entry.

5.6 Ligand geometry [i](#)

10 ligands are modelled in this entry.

In the following table, the Counts columns list the number of bonds (or angles) for which Mogul statistics could be retrieved, the number of bonds (or angles) that are observed in the model and the number of bonds (or angles) that are defined in the Chemical Component Dictionary. The Link column lists molecule types, if any, to which the group is linked. The Z score for a bond length (or angle) is the number of standard deviations the observed value is removed from the expected value. A bond length (or angle) with $|Z| > 2$ is considered an outlier worth inspection. RMSZ is the root-mean-square of all Z scores of the bond lengths (or angles).

Mol	Type	Chain	Res	Link	Bond lengths			Bond angles		
					Counts	RMSZ	$\# Z > 2$	Counts	RMSZ	$\# Z > 2$
3	SO4	B	604	-	4,4,4	0.17	0	6,6,6	0.15	0
3	SO4	A	604	-	4,4,4	0.16	0	6,6,6	0.11	0
3	SO4	A	603	-	4,4,4	0.14	0	6,6,6	0.21	0
3	SO4	B	605	-	4,4,4	0.21	0	6,6,6	0.17	0
3	SO4	A	602	-	4,4,4	0.15	0	6,6,6	0.36	0
2	OW8	B	601	-	13,13,13	4.69	7 (53%)	11,18,18	2.52	5 (45%)
3	SO4	A	605	-	4,4,4	0.14	0	6,6,6	0.06	0
3	SO4	B	602	-	4,4,4	0.16	0	6,6,6	0.17	0
2	OW8	A	601	-	13,13,13	4.61	7 (53%)	11,18,18	2.51	6 (54%)
3	SO4	B	603	-	4,4,4	0.13	0	6,6,6	0.13	0

In the following table, the Chirals column lists the number of chiral outliers, the number of chiral centers analysed, the number of these observed in the model and the number defined in the Chemical Component Dictionary. Similar counts are reported in the Torsion and Rings columns. '-' means no outliers of that kind were identified.

Mol	Type	Chain	Res	Link	Chirals	Torsions	Rings
2	OW8	A	601	-	-	0/2/12/12	0/2/2/2
2	OW8	B	601	-	-	0/2/12/12	0/2/2/2

All (14) bond length outliers are listed below:

Mol	Chain	Res	Type	Atoms	Z	Observed(Å)	Ideal(Å)
2	B	601	OW8	C08-C09	-11.66	1.41	1.50
2	A	601	OW8	C08-C09	-11.30	1.42	1.50
2	B	601	OW8	C03-N02	8.43	1.44	1.33
2	A	601	OW8	C03-N02	8.28	1.44	1.33
2	B	601	OW8	C06-C05	-5.22	1.41	1.51
2	A	601	OW8	C06-C05	-5.15	1.41	1.51
2	A	601	OW8	C07-C08	-4.28	1.40	1.53
2	B	601	OW8	C07-C08	-4.24	1.40	1.53
2	B	601	OW8	C07-C06	-4.15	1.40	1.53
2	A	601	OW8	C07-C06	-4.07	1.41	1.53
2	B	601	OW8	C04-N11	-2.24	1.31	1.36
2	A	601	OW8	C04-N11	-2.17	1.31	1.36
2	A	601	OW8	N11-N10	-2.15	1.33	1.37
2	B	601	OW8	N11-N10	-2.15	1.33	1.37

All (11) bond angle outliers are listed below:

Mol	Chain	Res	Type	Atoms	Z	Observed(°)	Ideal(°)
2	B	601	OW8	C08-C09-C05	-5.24	107.32	111.09
2	A	601	OW8	C08-C09-C05	-4.56	107.81	111.09
2	B	601	OW8	C07-C08-C09	4.52	107.22	103.93
2	A	601	OW8	C07-C08-C09	4.23	107.01	103.93
2	A	601	OW8	C06-C05-C09	-2.79	107.66	110.96
2	A	601	OW8	C07-C06-C05	2.72	107.11	103.52
2	A	601	OW8	C01-N02-C03	-2.47	119.09	121.89
2	B	601	OW8	C07-C06-C05	2.31	106.57	103.52
2	A	601	OW8	C09-N10-N11	2.16	111.16	106.98
2	B	601	OW8	C06-C05-C09	-2.12	108.45	110.96
2	B	601	OW8	C09-N10-N11	2.08	111.01	106.98

There are no chirality outliers.

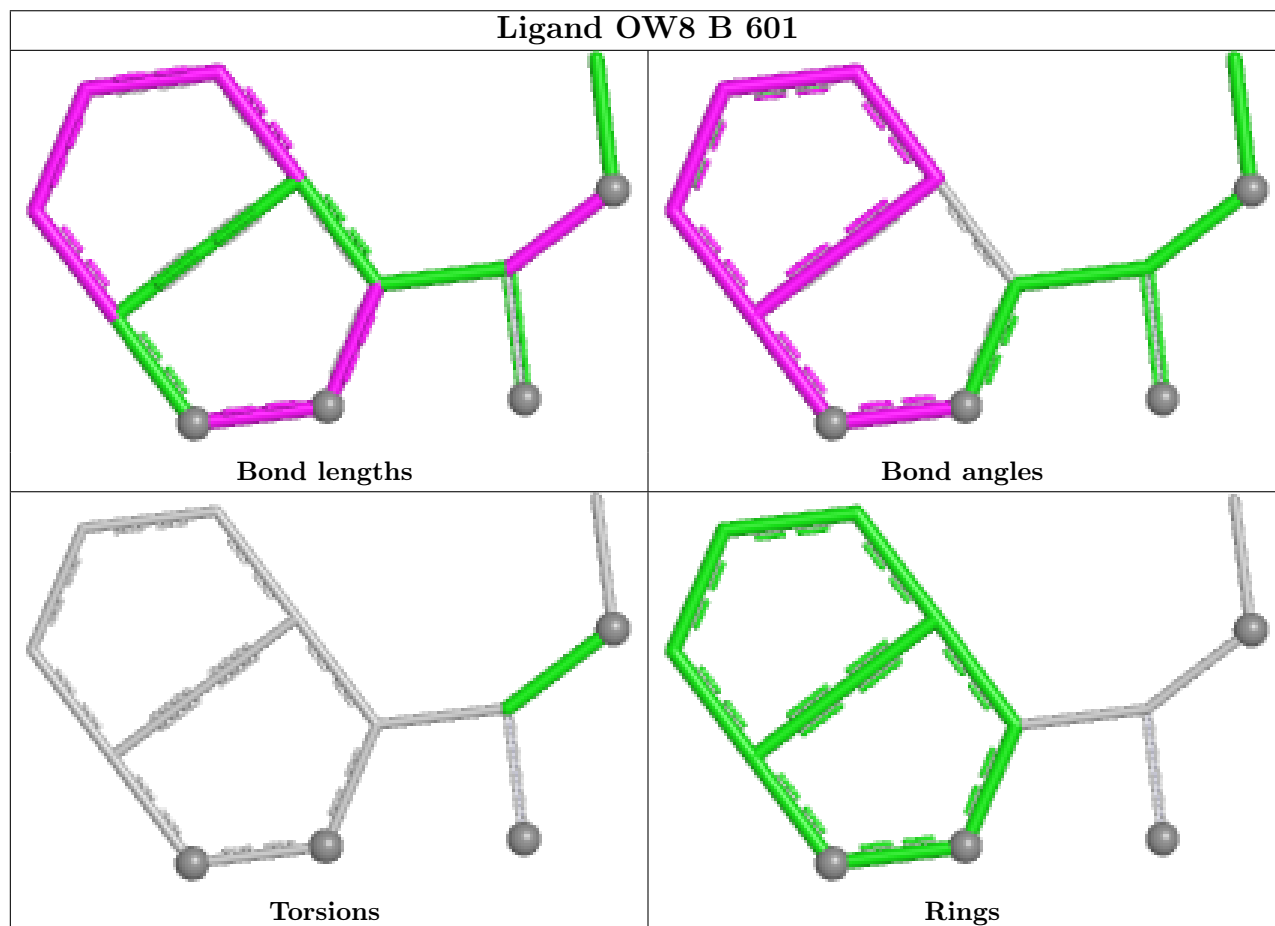
There are no torsion outliers.

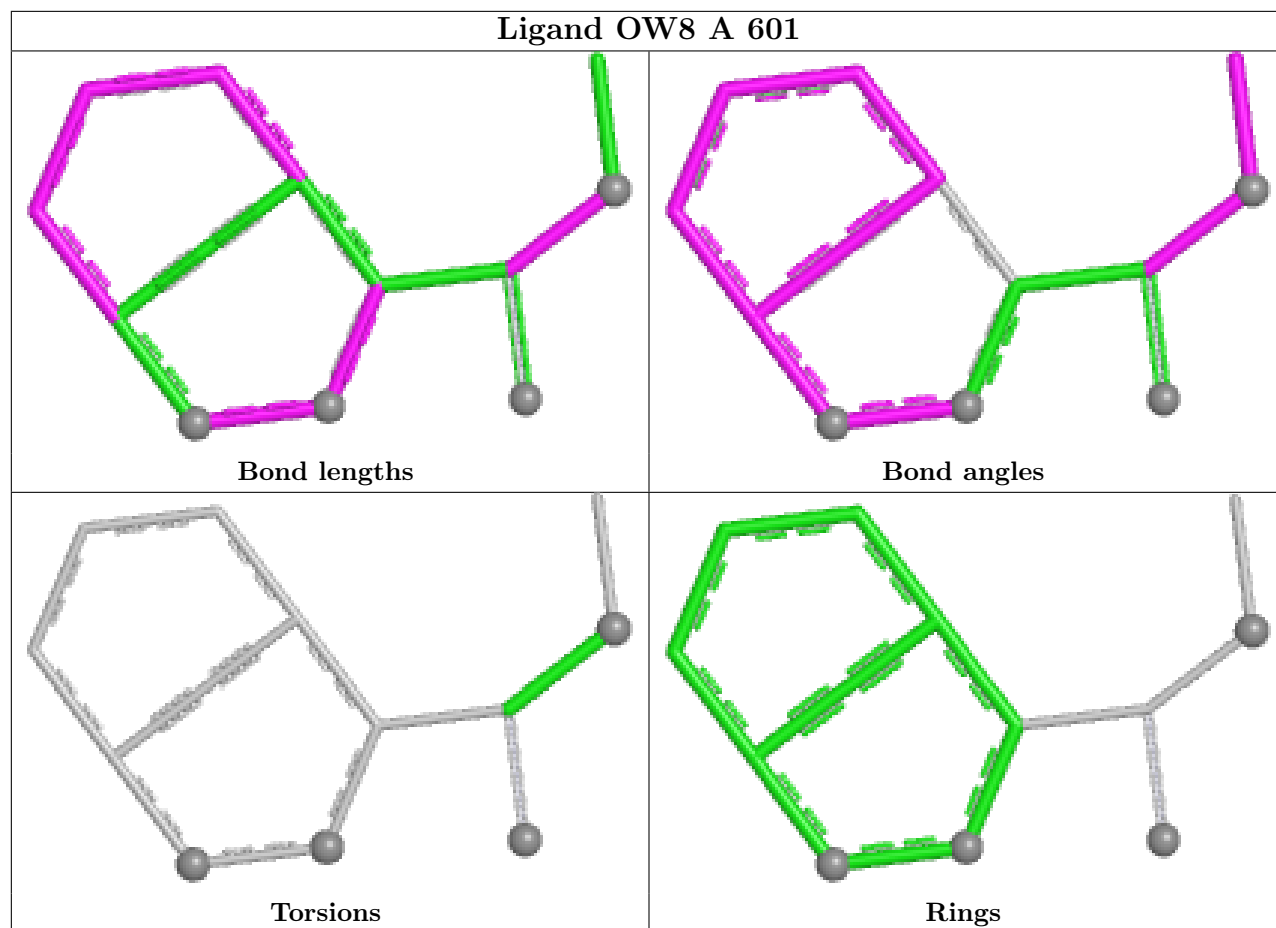
There are no ring outliers.

2 monomers are involved in 3 short contacts:

Mol	Chain	Res	Type	Clashes	Symm-Clashes
3	B	604	SO4	2	0
3	B	605	SO4	1	0

The following is a two-dimensional graphical depiction of Mogul quality analysis of bond lengths, bond angles, torsion angles, and ring geometry for all instances of the Ligand of Interest. In addition, ligands with molecular weight > 250 and outliers as shown on the validation Tables will also be included. For torsion angles, if less than 5% of the Mogul distribution of torsion angles is within 10 degrees of the torsion angle in question, then that torsion angle is considered an outlier. Any bond that is central to one or more torsion angles identified as an outlier by Mogul will be highlighted in the graph. For rings, the root-mean-square deviation (RMSD) between the ring in question and similar rings identified by Mogul is calculated over all ring torsion angles. If the average RMSD is greater than 60 degrees and the minimal RMSD between the ring in question and any Mogul-identified rings is also greater than 60 degrees, then that ring is considered an outlier. The outliers are highlighted in purple. The color gray indicates Mogul did not find sufficient equivalents in the CSD to analyse the geometry.





5.7 Other polymers [i](#)

There are no such residues in this entry.

5.8 Polymer linkage issues [i](#)

There are no chain breaks in this entry.

6 Fit of model and data [i](#)

6.1 Protein, DNA and RNA chains [i](#)

In the following table, the column labelled ‘#RSRZ> 2’ contains the number (and percentage) of RSRZ outliers, followed by percent RSRZ outliers for the chain as percentile scores relative to all X-ray entries and entries of similar resolution. The OWAB column contains the minimum, median, 95th percentile and maximum values of the occupancy-weighted average B-factor per residue. The column labelled ‘Q< 0.9’ lists the number of (and percentage) of residues with an average occupancy less than 0.9.

Mol	Chain	Analysed	<RSRZ>	#RSRZ>2	OWAB(Å ²)	Q<0.9
1	A	165/183 (90%)	0.18	9 (5%) 25 24	10, 15, 31, 46	0
1	B	164/183 (89%)	0.20	8 (4%) 29 29	9, 14, 29, 42	0
All	All	329/366 (89%)	0.19	17 (5%) 27 26	9, 14, 30, 46	0

All (17) RSRZ outliers are listed below:

Mol	Chain	Res	Type	RSRZ
1	A	432	ALA	6.8
1	B	424	SER	3.9
1	A	434	MET	3.8
1	B	501	TYR	3.4
1	A	437	LYS	3.3
1	B	422	GLY	3.3
1	A	433	GLY	3.1
1	A	439	LEU	3.0
1	B	423	GLY	2.9
1	A	344	GLY	2.6
1	B	426	ILE	2.6
1	B	429	VAL	2.5
1	A	436	ALA	2.5
1	A	438	MET	2.4
1	B	428	TRP	2.2
1	B	436	ALA	2.2
1	A	431	PRO	2.1

6.2 Non-standard residues in protein, DNA, RNA chains [i](#)

There are no non-standard protein/DNA/RNA residues in this entry.

6.3 Carbohydrates [i](#)

There are no monosaccharides in this entry.

6.4 Ligands [i](#)

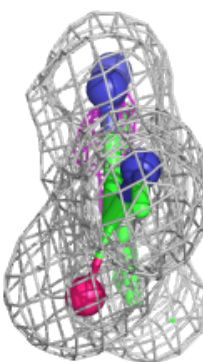
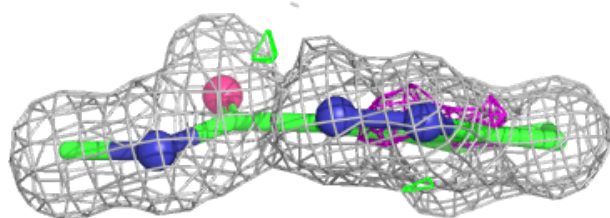
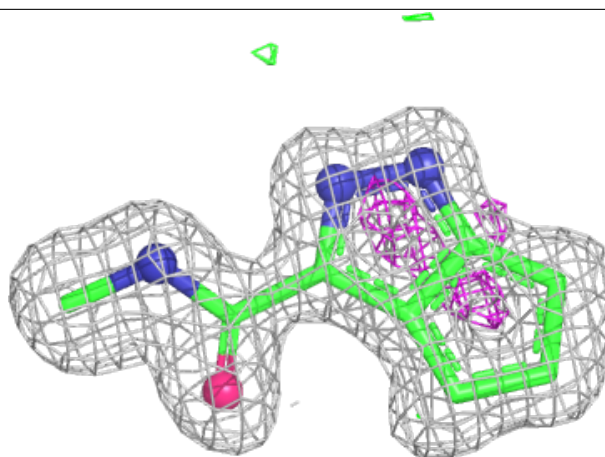
In the following table, the Atoms column lists the number of modelled atoms in the group and the number defined in the chemical component dictionary. The B-factors column lists the minimum, median, 95th percentile and maximum values of B factors of atoms in the group. The column labelled 'Q< 0.9' lists the number of atoms with occupancy less than 0.9.

Mol	Type	Chain	Res	Atoms	RSCC	RSR	B-factors(Å ²)	Q<0.9
3	SO4	B	605	5/5	0.82	0.20	21,35,45,46	0
2	OW8	A	601	12/12	0.86	0.14	13,17,21,21	0
3	SO4	B	604	5/5	0.87	0.31	38,42,43,51	0
3	SO4	A	605	5/5	0.89	0.24	41,46,51,53	0
2	OW8	B	601	12/12	0.90	0.11	15,17,23,25	0
3	SO4	A	604	5/5	0.95	0.19	21,27,31,32	0
3	SO4	B	603	5/5	0.97	0.10	27,29,34,35	0
3	SO4	A	602	5/5	0.97	0.13	14,18,21,22	0
3	SO4	A	603	5/5	0.97	0.16	21,21,28,31	0
3	SO4	B	602	5/5	0.99	0.04	14,16,18,19	0

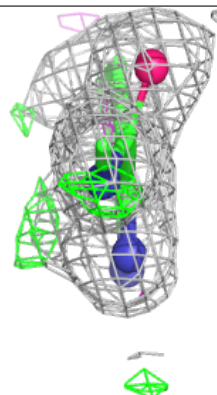
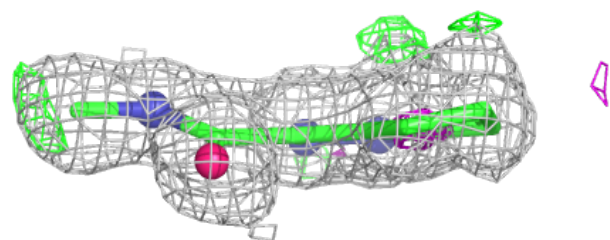
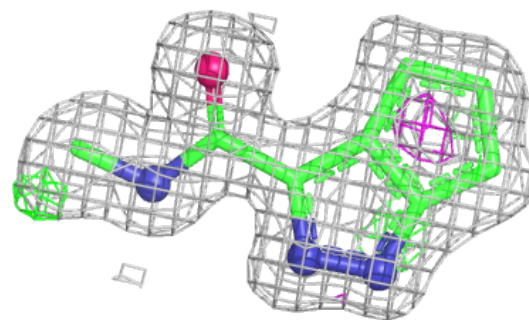
The following is a graphical depiction of the model fit to experimental electron density of all instances of the Ligand of Interest. In addition, ligands with molecular weight > 250 and outliers as shown on the geometry validation Tables will also be included. Each fit is shown from different orientation to approximate a three-dimensional view.

Electron density around OW8 A 601:

$2mF_o-DF_c$ (at 0.7 rmsd) in gray
 mF_o-DF_c (at 3 rmsd) in purple (negative)
and green (positive)

**Electron density around OW8 B 601:**

$2mF_o-DF_c$ (at 0.7 rmsd) in gray
 mF_o-DF_c (at 3 rmsd) in purple (negative)
and green (positive)



6.5 Other polymers [i](#)

There are no such residues in this entry.