



Full wwPDB X-ray Structure Validation Report ⓘ

Sep 29, 2021 – 02:06 pm BST

PDB ID : 7A8Q
Title : Crystal structure of human phosphodiesterase 4D2 catalytic domain with inhibitor NPD-654
Authors : Singh, A.K.; Blaazer, A.R.; Zara, L.; de Esch, I.J.P.; Leurs, R.; Brown, D.G.
Deposited on : 2020-08-30
Resolution : 2.24 Å (reported)

This is a Full wwPDB X-ray Structure Validation Report for a publicly released PDB entry.

We welcome your comments at validation@mail.wwpdb.org

A user guide is available at

<https://www.wwpdb.org/validation/2017/XrayValidationReportHelp>

with specific help available everywhere you see the ⓘ symbol.

The following versions of software and data (see [references ⓘ](#)) were used in the production of this report:

MolProbity : 4.02b-467
Mogul : 1.8.5 (274361), CSD as541be (2020)
Xtrriage (Phenix) : 1.13
EDS : 2.23.2
buster-report : 1.1.7 (2018)
Percentile statistics : 20191225.v01 (using entries in the PDB archive December 25th 2019)
Refmac : 5.8.0267
CCP4 : 7.1.010 (Gargrove)
Ideal geometry (proteins) : Engh & Huber (2001)
Ideal geometry (DNA, RNA) : Parkinson et al. (1996)
Validation Pipeline (wwPDB-VP) : 2.23.2

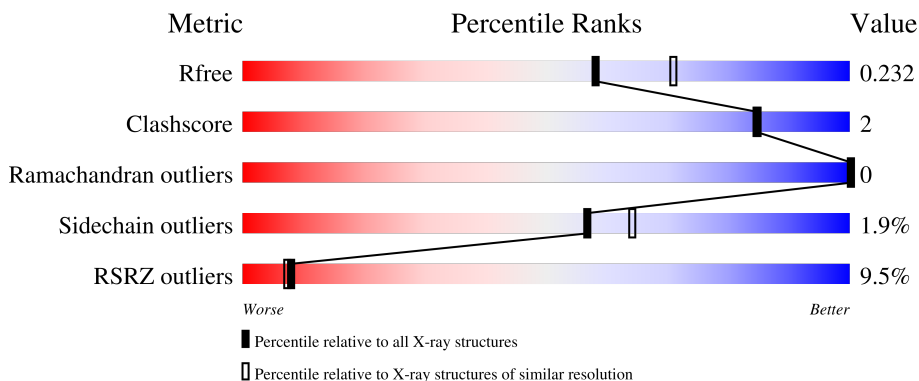
1 Overall quality at a glance

The following experimental techniques were used to determine the structure:

X-RAY DIFFRACTION

The reported resolution of this entry is 2.24 Å.

Percentile scores (ranging between 0-100) for global validation metrics of the entry are shown in the following graphic. The table shows the number of entries on which the scores are based.



Metric	Whole archive (#Entries)	Similar resolution (#Entries, resolution range(Å))
R_{free}	130704	2391 (2.26-2.22)
Clashscore	141614	2539 (2.26-2.22)
Ramachandran outliers	138981	2489 (2.26-2.22)
Sidechain outliers	138945	2490 (2.26-2.22)
RSRZ outliers	127900	2353 (2.26-2.22)

The table below summarises the geometric issues observed across the polymeric chains and their fit to the electron density. The red, orange, yellow and green segments of the lower bar indicate the fraction of residues that contain outliers for ≥ 3 , 2, 1 and 0 types of geometric quality criteria respectively. A grey segment represents the fraction of residues that are not modelled. The numeric value for each fraction is indicated below the corresponding segment, with a dot representing fractions $\leq 5\%$. The upper red bar (where present) indicates the fraction of residues that have poor fit to the electron density. The numeric value is given above the bar.

Mol	Chain	Length	Quality of chain
1	A	364	 8% 84% 6% 10%
1	B	364	 12% 82% 7% 11%
1	C	364	 10% 84% 5% 11%
1	D	364	 4% 84% 11%

The following table lists non-polymeric compounds, carbohydrate monomers and non-standard

residues in protein, DNA, RNA chains that are outliers for geometric or electron-density-fit criteria:

Mol	Type	Chain	Res	Chirality	Geometry	Clashes	Electron density
4	EDO	A	507	-	-	-	X
4	EDO	C	504	-	-	-	X
5	EPE	A	510	-	-	-	X
6	R4H	B	508	X	-	-	-
6	R4H	C	507	X	-	-	-
6	R4H	D	512	X	-	-	X

2 Entry composition i

There are 8 unique types of molecules in this entry. The entry contains 11327 atoms, of which 0 are hydrogens and 0 are deuteriums.

In the tables below, the ZeroOcc column contains the number of atoms modelled with zero occupancy, the AltConf column contains the number of residues with at least one atom in alternate conformation and the Trace column contains the number of residues modelled with at most 2 atoms.

- Molecule 1 is a protein called cAMP-specific 3',5'-cyclic phosphodiesterase 4D.

Mol	Chain	Residues	Atoms					ZeroOcc	AltConf	Trace
			Total	C	N	O	S			
1	A	329	2658	1681	454	509	14	0	0	0
1	B	324	2622	1659	448	501	14	0	0	0
1	C	325	2631	1664	449	504	14	0	0	0
1	D	324	2622	1659	448	501	14	0	0	0

There are 16 discrepancies between the modelled and reference sequences:

Chain	Residue	Modelled	Actual	Comment	Reference
A	75	GLY	-	expression tag	UNP Q08499
A	76	SER	-	expression tag	UNP Q08499
A	77	HIS	-	expression tag	UNP Q08499
A	78	MET	-	expression tag	UNP Q08499
B	75	GLY	-	expression tag	UNP Q08499
B	76	SER	-	expression tag	UNP Q08499
B	77	HIS	-	expression tag	UNP Q08499
B	78	MET	-	expression tag	UNP Q08499
C	75	GLY	-	expression tag	UNP Q08499
C	76	SER	-	expression tag	UNP Q08499
C	77	HIS	-	expression tag	UNP Q08499
C	78	MET	-	expression tag	UNP Q08499
D	75	GLY	-	expression tag	UNP Q08499
D	76	SER	-	expression tag	UNP Q08499
D	77	HIS	-	expression tag	UNP Q08499
D	78	MET	-	expression tag	UNP Q08499

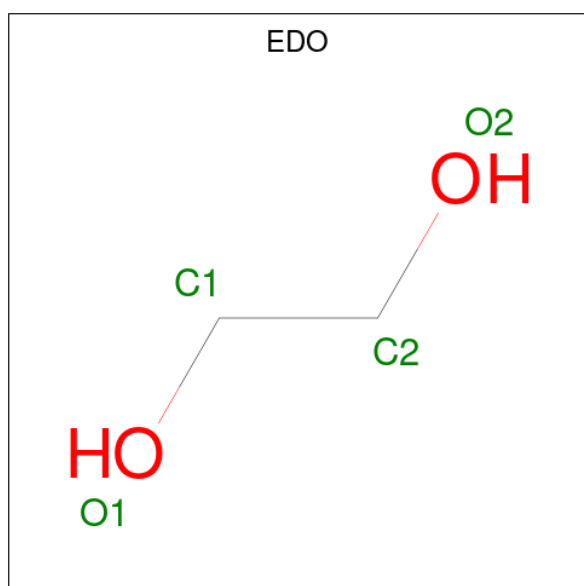
- Molecule 2 is ZINC ION (three-letter code: ZN) (formula: Zn).

Mol	Chain	Residues	Atoms	ZeroOcc	AltConf
2	A	1	Total Zn 1 1	0	0
2	B	1	Total Zn 1 1	0	0
2	C	1	Total Zn 1 1	0	0
2	D	1	Total Zn 1 1	0	0

- Molecule 3 is MAGNESIUM ION (three-letter code: MG) (formula: Mg).

Mol	Chain	Residues	Atoms	ZeroOcc	AltConf
3	A	1	Total Mg 1 1	0	0
3	B	1	Total Mg 1 1	0	0
3	C	1	Total Mg 1 1	0	0
3	D	1	Total Mg 1 1	0	0

- Molecule 4 is 1,2-ETHANEDIOL (three-letter code: EDO) (formula: C₂H₆O₂).



Mol	Chain	Residues	Atoms	ZeroOcc	AltConf
4	A	1	Total C O 4 2 2	0	0
4	A	1	Total C O 4 2 2	0	0

Continued on next page...

Continued from previous page...

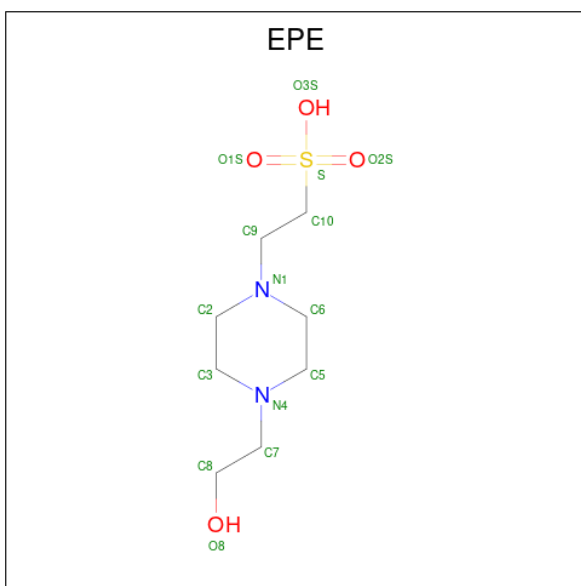
Mol	Chain	Residues	Atoms			ZeroOcc	AltConf
4	A	1	Total	C	O	0	0
			4	2	2		
4	A	1	Total	C	O	0	0
			4	2	2		
4	A	1	Total	C	O	0	0
			4	2	2		
4	A	1	Total	C	O	0	0
			4	2	2		
4	A	1	Total	C	O	0	0
			4	2	2		
4	A	1	Total	C	O	0	0
			4	2	2		
4	B	1	Total	C	O	0	0
			4	2	2		
4	B	1	Total	C	O	0	0
			4	2	2		
4	B	1	Total	C	O	0	0
			4	2	2		
4	B	1	Total	C	O	0	0
			4	2	2		
4	B	1	Total	C	O	0	0
			4	2	2		
4	B	1	Total	C	O	0	0
			4	2	2		
4	C	1	Total	C	O	0	0
			4	2	2		
4	C	1	Total	C	O	0	0
			4	2	2		
4	C	1	Total	C	O	0	0
			4	2	2		
4	C	1	Total	C	O	0	0
			4	2	2		
4	D	1	Total	C	O	0	0
			4	2	2		
4	D	1	Total	C	O	0	0
			4	2	2		
4	D	1	Total	C	O	0	0
			4	2	2		
4	D	1	Total	C	O	0	0
			4	2	2		
4	D	1	Total	C	O	0	0
			4	2	2		

Continued on next page...

Continued from previous page...

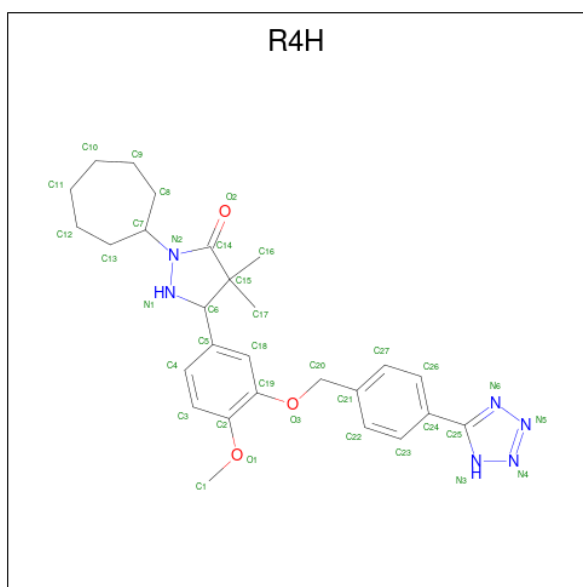
Mol	Chain	Residues	Atoms			ZeroOcc	AltConf
4	D	1	Total	C	O	0	0
			4	2	2		
4	D	1	Total	C	O	0	0
			4	2	2		
4	D	1	Total	C	O	0	0
			4	2	2		
4	D	1	Total	C	O	0	0
			4	2	2		

- Molecule 5 is 4-(2-HYDROXYETHYL)-1-PIPERAZINE ETHANESULFONIC ACID (three-letter code: EPE) (formula: C₈H₁₈N₂O₄S).



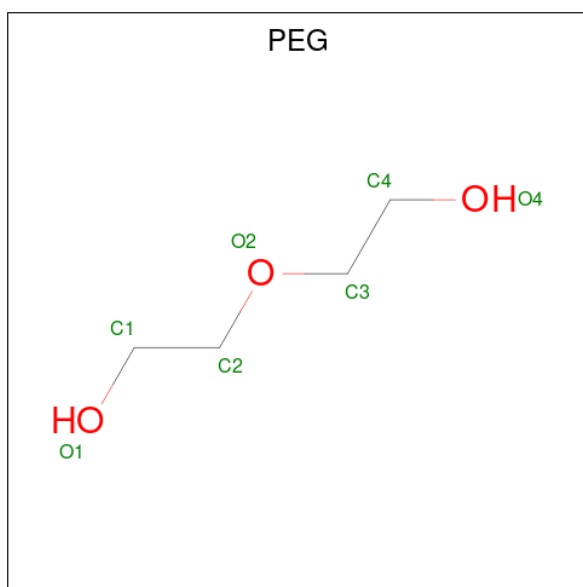
Mol	Chain	Residues	Atoms					ZeroOcc	AltConf
5	A	1	Total	C	N	O	S	0	0
			15	8	2	4	1		
5	B	1	Total	C	N	O	S	0	0
			15	8	2	4	1		
5	B	1	Total	C	N	O	S	0	0
			15	8	2	4	1		
5	C	1	Total	C	N	O	S	0	0
			15	8	2	4	1		
5	D	1	Total	C	N	O	S	0	0
			15	8	2	4	1		

- Molecule 6 is 2-cycloheptyl-5-[4-methoxy-3-[[4-(1 {H}-1,2,3,4-tetrazol-5-yl)phenyl]methoxy]phenyl]-4,4-dimethyl-pyrazolidin-3-one (three-letter code: R4H) (formula: C₂₇H₃₄N₆O₃) (labeled as "Ligand of Interest" by depositor).



Mol	Chain	Residues	Atoms				ZeroOcc	AltConf
			Total	C	N	O		
6	B	1	Total	C	N	O	0	0
			36	27	6	3		
6	C	1	Total	C	N	O	0	0
			36	27	6	3		
6	D	1	Total	C	N	O	0	0
			36	27	6	3		

- Molecule 7 is DI(HYDROXYETHYL)ETHER (three-letter code: PEG) (formula: C₄H₁₀O₃).



Mol	Chain	Residues	Atoms			ZeroOcc	AltConf
			Total	C	O		
7	C	1	Total	C	O	0	0
			7	4	3		

Continued on next page...

Continued from previous page...

Mol	Chain	Residues	Atoms	ZeroOcc	AltConf
7	D	1	Total C O 7 4 3	0	0
7	D	1	Total C O 7 4 3	0	0
7	D	1	Total C O 7 4 3	0	0

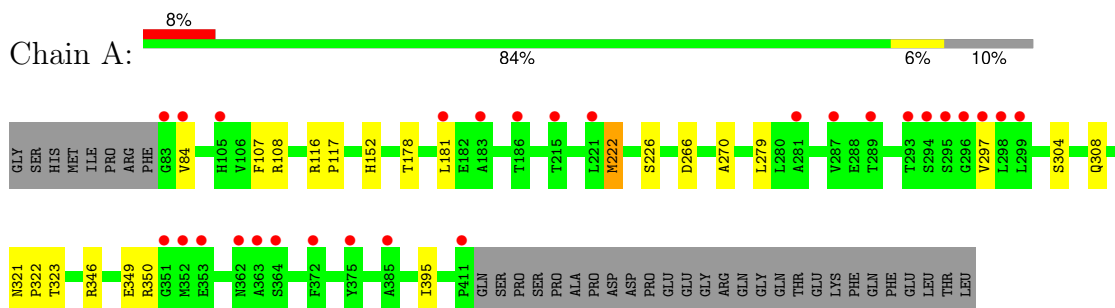
- Molecule 8 is water.

Mol	Chain	Residues	Atoms	ZeroOcc	AltConf
8	A	131	Total O 131 131	0	0
8	B	106	Total O 106 106	0	0
8	C	85	Total O 85 85	0	0
8	D	145	Total O 145 145	0	0

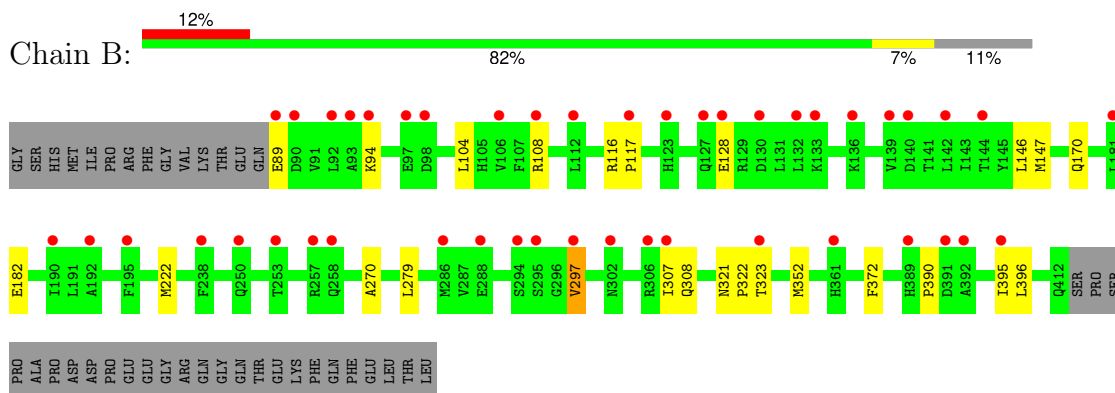
3 Residue-property plots i

These plots are drawn for all protein, RNA, DNA and oligosaccharide chains in the entry. The first graphic for a chain summarises the proportions of the various outlier classes displayed in the second graphic. The second graphic shows the sequence view annotated by issues in geometry and electron density. Residues are color-coded according to the number of geometric quality criteria for which they contain at least one outlier: green = 0, yellow = 1, orange = 2 and red = 3 or more. A red dot above a residue indicates a poor fit to the electron density ($RSRZ > 2$). Stretches of 2 or more consecutive residues without any outlier are shown as a green connector. Residues present in the sample, but not in the model, are shown in grey.

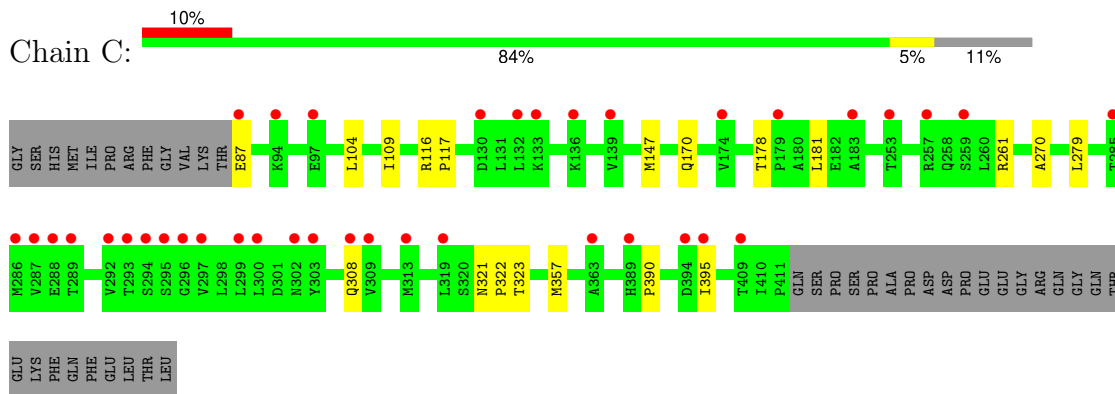
- Molecule 1: cAMP-specific 3',5'-cyclic phosphodiesterase 4D



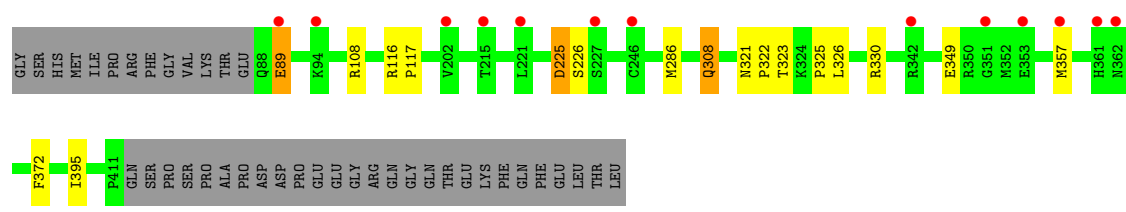
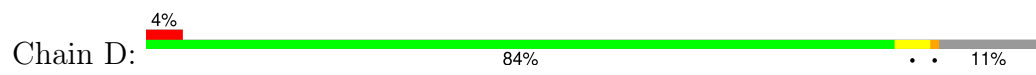
- Molecule 1: cAMP-specific 3',5'-cyclic phosphodiesterase 4D



- Molecule 1: cAMP-specific 3',5'-cyclic phosphodiesterase 4D



- Molecule 1: cAMP-specific 3',5'-cyclic phosphodiesterase 4D



4 Data and refinement statistics

Property	Value	Source
Space group	P 21 21 21	Depositor
Cell constants a, b, c, α , β , γ	99.35Å 111.44Å 160.23Å 90.00° 90.00° 90.00°	Depositor
Resolution (Å)	91.49 – 2.24 91.49 – 2.25	Depositor EDS
% Data completeness (in resolution range)	100.0 (91.49-2.24) 100.0 (91.49-2.25)	Depositor EDS
R_{merge}	0.07	Depositor
R_{sym}	(Not available)	Depositor
$\langle I/\sigma(I) \rangle$ ¹	2.08 (at 2.25Å)	Xtriage
Refinement program	REFMAC 5.8.0258	Depositor
R, R_{free}	0.187 , 0.229 0.193 , 0.232	Depositor DCC
R_{free} test set	4421 reflections (5.17%)	wwPDB-VP
Wilson B-factor (Å ²)	47.4	Xtriage
Anisotropy	0.217	Xtriage
Bulk solvent k_{sol} (e/Å ³), B_{sol} (Å ²)	(Not available) , (Not available)	EDS
L-test for twinning ²	$\langle L \rangle = 0.48$, $\langle L^2 \rangle = 0.32$	Xtriage
Estimated twinning fraction	No twinning to report.	Xtriage
F_o, F_c correlation	0.96	EDS
Total number of atoms	11327	wwPDB-VP
Average B, all atoms (Å ²)	58.0	wwPDB-VP

Xtriage's analysis on translational NCS is as follows: *The largest off-origin peak in the Patterson function is 3.25% of the height of the origin peak. No significant pseudotranslation is detected.*

¹Intensities estimated from amplitudes.

²Theoretical values of $\langle |L| \rangle$, $\langle L^2 \rangle$ for acentric reflections are 0.5, 0.333 respectively for untwinned datasets, and 0.375, 0.2 for perfectly twinned datasets.

5 Model quality [i](#)

5.1 Standard geometry [i](#)

Bond lengths and bond angles in the following residue types are not validated in this section: R4H, ZN, EPE, EDO, PEG, MG

The Z score for a bond length (or angle) is the number of standard deviations the observed value is removed from the expected value. A bond length (or angle) with $|Z| > 5$ is considered an outlier worth inspection. RMSZ is the root-mean-square of all Z scores of the bond lengths (or angles).

Mol	Chain	Bond lengths		Bond angles	
		RMSZ	# Z >5	RMSZ	# Z >5
1	A	0.68	0/2712	0.74	0/3684
1	B	0.69	0/2676	0.73	0/3636
1	C	0.68	0/2685	0.73	0/3648
1	D	0.69	0/2676	0.73	0/3636
All	All	0.68	0/10749	0.73	0/14604

There are no bond length outliers.

There are no bond angle outliers.

There are no chirality outliers.

There are no planarity outliers.

5.2 Too-close contacts [i](#)

In the following table, the Non-H and H(model) columns list the number of non-hydrogen atoms and hydrogen atoms in the chain respectively. The H(added) column lists the number of hydrogen atoms added and optimized by MolProbity. The Clashes column lists the number of clashes within the asymmetric unit, whereas Symm-Clashes lists symmetry-related clashes.

Mol	Chain	Non-H	H(model)	H(added)	Clashes	Symm-Clashes
1	A	2658	0	2616	14	0
1	B	2622	0	2578	13	0
1	C	2631	0	2584	10	0
1	D	2622	0	2578	12	0
2	A	1	0	0	0	0
2	B	1	0	0	0	0
2	C	1	0	0	0	0
2	D	1	0	0	0	0
3	A	1	0	0	0	0

Continued on next page...

Continued from previous page...

Mol	Chain	Non-H	H(model)	H(added)	Clashes	Symm-Clashes
3	B	1	0	0	0	0
3	C	1	0	0	0	0
3	D	1	0	0	0	0
4	A	36	0	54	3	0
4	B	20	0	30	2	0
4	C	16	0	24	0	0
4	D	36	0	54	0	0
5	A	15	0	17	3	0
5	B	30	0	36	2	0
5	C	15	0	18	0	0
5	D	15	0	17	2	0
6	B	36	0	0	1	0
6	C	36	0	0	1	0
6	D	36	0	0	2	0
7	C	7	0	10	0	0
7	D	21	0	30	1	0
8	A	131	0	0	1	0
8	B	106	0	0	0	0
8	C	85	0	0	0	0
8	D	145	0	0	0	0
All	All	11327	0	10646	49	0

The all-atom clashscore is defined as the number of clashes found per 1000 atoms (including hydrogen atoms). The all-atom clashscore for this structure is 2.

All (49) close contacts within the same asymmetric unit are listed below, sorted by their clash magnitude.

Atom-1	Atom-2	Interatomic distance (Å)	Clash overlap (Å)
1:C:261:ARG:NH2	1:D:225:ASP:OD1	2.11	0.83
1:B:182:GLU:O	1:B:297:VAL:HG21	1.78	0.83
5:D:516:EPE:O8	5:D:516:EPE:H52	1.85	0.77
5:A:510:EPE:H62	5:A:510:EPE:O3S	1.89	0.72
1:A:346:ARG:O	1:A:350:ARG:HG3	1.97	0.63
1:D:325:PRO:HA	7:D:515:PEG:H21	1.79	0.63
5:B:509:EPE:N4	5:B:509:EPE:H92	2.19	0.57
1:A:107:PHE:HB3	5:A:510:EPE:H82	1.87	0.56
1:B:352:MET:HE2	4:B:506:EDO:H21	1.92	0.52
1:B:352:MET:HE1	4:B:506:EDO:C1	2.42	0.50
1:D:108:ARG:HB2	5:D:516:EPE:H102	1.94	0.49
1:D:323:THR:HB	1:D:395:ILE:HG23	1.94	0.48
1:A:323:THR:HB	1:A:395:ILE:HG23	1.96	0.48

Continued on next page...

Continued from previous page...

Atom-1	Atom-2	Interatomic distance (Å)	Clash overlap (Å)
1:B:323:THR:HB	1:B:395:ILE:HG23	1.95	0.47
1:A:222:MET:HG2	1:B:222:MET:HE3	1.96	0.47
5:B:509:EPE:N4	5:B:509:EPE:C9	2.76	0.47
1:B:147:MET:SD	1:D:349:GLU:HB3	2.54	0.47
1:A:108:ARG:HB2	5:A:510:EPE:H102	1.97	0.47
1:A:116:ARG:N	1:A:117:PRO:CD	2.79	0.46
1:C:116:ARG:N	1:C:117:PRO:CD	2.79	0.46
1:C:357:MET:SD	6:C:507:R4H:C22	3.03	0.46
1:D:116:ARG:N	1:D:117:PRO:CD	2.79	0.46
1:A:222:MET:O	1:A:222:MET:HG3	2.15	0.45
1:C:321:ASN:HB2	1:C:322:PRO:HD3	1.98	0.45
1:D:372:PHE:HB2	6:D:512:R4H:C23	2.46	0.45
1:B:116:ARG:N	1:B:117:PRO:CD	2.80	0.45
1:C:323:THR:HB	1:C:395:ILE:HG23	1.98	0.45
8:A:633:HOH:O	1:B:222:MET:HE1	2.17	0.45
1:A:178:THR:HG22	1:A:181:LEU:HD12	1.99	0.44
1:D:286:MET:SD	1:D:308:GLN:NE2	2.85	0.44
1:C:178:THR:HG22	1:C:181:LEU:HD12	1.99	0.44
1:C:270:ALA:HB1	1:C:279:LEU:HD11	2.00	0.43
1:A:178:THR:OG1	4:A:511:EDO:H12	2.19	0.43
1:B:372:PHE:HB2	6:B:508:R4H:C23	2.49	0.43
1:D:326:LEU:HG	1:D:330:ARG:HD3	2.00	0.43
1:C:104:LEU:HD22	1:C:170:GLN:HG3	1.99	0.43
1:A:152:HIS:HE1	4:A:512:EDO:H11	1.84	0.42
1:C:104:LEU:HD11	1:C:109:ILE:HD11	2.01	0.42
1:B:321:ASN:HB2	1:B:322:PRO:HD3	2.01	0.42
1:D:89:GLU:H	1:D:89:GLU:HG2	1.62	0.42
1:D:321:ASN:HB2	1:D:322:PRO:HD3	2.01	0.42
1:A:266:ASP:OD1	4:A:509:EDO:O1	2.28	0.42
1:B:104:LEU:HD22	1:B:170:GLN:HG3	2.02	0.41
1:D:357:MET:SD	6:D:512:R4H:C22	3.08	0.41
1:A:270:ALA:HB1	1:A:279:LEU:HD11	2.02	0.41
1:A:321:ASN:HB2	1:A:322:PRO:HD3	2.02	0.41
1:B:270:ALA:HB1	1:B:279:LEU:HD11	2.03	0.41
1:A:349:GLU:HG3	1:C:147:MET:CE	2.50	0.41
1:B:307:ILE:HD12	1:B:307:ILE:HA	1.96	0.41

There are no symmetry-related clashes.

5.3 Torsion angles [i](#)

5.3.1 Protein backbone [i](#)

In the following table, the Percentiles column shows the percent Ramachandran outliers of the chain as a percentile score with respect to all X-ray entries followed by that with respect to entries of similar resolution.

The Analysed column shows the number of residues for which the backbone conformation was analysed, and the total number of residues.

Mol	Chain	Analysed	Favoured	Allowed	Outliers	Percentiles	
1	A	327/364 (90%)	323 (99%)	4 (1%)	0	100	100
1	B	322/364 (88%)	317 (98%)	5 (2%)	0	100	100
1	C	323/364 (89%)	317 (98%)	6 (2%)	0	100	100
1	D	322/364 (88%)	316 (98%)	6 (2%)	0	100	100
All	All	1294/1456 (89%)	1273 (98%)	21 (2%)	0	100	100

There are no Ramachandran outliers to report.

5.3.2 Protein sidechains [i](#)

In the following table, the Percentiles column shows the percent sidechain outliers of the chain as a percentile score with respect to all X-ray entries followed by that with respect to entries of similar resolution.

The Analysed column shows the number of residues for which the sidechain conformation was analysed, and the total number of residues.

Mol	Chain	Analysed	Rotameric	Outliers	Percentiles	
1	A	300/331 (91%)	294 (98%)	6 (2%)	55	62
1	B	296/331 (89%)	287 (97%)	9 (3%)	41	47
1	C	297/331 (90%)	294 (99%)	3 (1%)	76	82
1	D	296/331 (89%)	292 (99%)	4 (1%)	67	74
All	All	1189/1324 (90%)	1167 (98%)	22 (2%)	57	64

All (22) residues with a non-rotameric sidechain are listed below:

Mol	Chain	Res	Type
1	A	84	VAL
1	A	222	MET

Continued on next page...

Continued from previous page...

Mol	Chain	Res	Type
1	A	226	SER
1	A	297	VAL
1	A	304	SER
1	A	308	GLN
1	B	89	GLU
1	B	94	LYS
1	B	108	ARG
1	B	128	GLU
1	B	146	LEU
1	B	297	VAL
1	B	308	GLN
1	B	390	PRO
1	B	396	LEU
1	C	87	GLU
1	C	308	GLN
1	C	390	PRO
1	D	89	GLU
1	D	225	ASP
1	D	226	SER
1	D	308	GLN

Sometimes sidechains can be flipped to improve hydrogen bonding and reduce clashes. All (4) such sidechains are listed below:

Mol	Chain	Res	Type
1	A	258	GLN
1	B	210	GLN
1	B	214	ASN
1	B	231	ASN

5.3.3 RNA [i](#)

There are no RNA molecules in this entry.

5.4 Non-standard residues in protein, DNA, RNA chains [i](#)

There are no non-standard protein/DNA/RNA residues in this entry.

5.5 Carbohydrates [i](#)

There are no monosaccharides in this entry.

5.6 Ligand geometry

Of 47 ligands modelled in this entry, 8 are monoatomic - leaving 39 for Mogul analysis.

In the following table, the Counts columns list the number of bonds (or angles) for which Mogul statistics could be retrieved, the number of bonds (or angles) that are observed in the model and the number of bonds (or angles) that are defined in the Chemical Component Dictionary. The Link column lists molecule types, if any, to which the group is linked. The Z score for a bond length (or angle) is the number of standard deviations the observed value is removed from the expected value. A bond length (or angle) with $|Z| > 2$ is considered an outlier worth inspection. RMSZ is the root-mean-square of all Z scores of the bond lengths (or angles).

Mol	Type	Chain	Res	Link	Bond lengths			Bond angles		
					Counts	RMSZ	# Z > 2	Counts	RMSZ	# Z > 2
4	EDO	A	506	-	3,3,3	0.14	0	2,2,2	0.27	0
6	R4H	C	507	-	37,40,40	0.86	2 (5%)	46,57,57	1.68	7 (15%)
4	EDO	A	504	-	3,3,3	0.31	0	2,2,2	0.41	0
4	EDO	C	509	-	3,3,3	0.26	0	2,2,2	0.50	0
4	EDO	D	510	-	3,3,3	0.42	0	2,2,2	0.47	0
4	EDO	B	504	-	3,3,3	0.25	0	2,2,2	0.19	0
5	EPE	B	509	-	15,15,15	1.74	1 (6%)	18,20,20	2.04	3 (16%)
4	EDO	C	505	-	3,3,3	0.21	0	2,2,2	0.24	0
4	EDO	A	509	-	3,3,3	0.20	0	2,2,2	0.26	0
5	EPE	B	510	-	15,15,15	2.07	1 (6%)	18,20,20	1.28	2 (11%)
4	EDO	A	505	-	3,3,3	0.14	0	2,2,2	0.42	0
5	EPE	A	510	-	15,15,15	2.53	1 (6%)	18,20,20	1.82	5 (27%)
7	PEG	D	514	-	6,6,6	0.49	0	5,5,5	0.45	0
4	EDO	A	508	-	3,3,3	0.25	0	2,2,2	0.18	0
6	R4H	B	508	-	37,40,40	0.89	2 (5%)	46,57,57	1.65	7 (15%)
4	EDO	A	503	-	3,3,3	0.10	0	2,2,2	0.08	0
4	EDO	B	507	-	3,3,3	0.17	0	2,2,2	0.52	0
4	EDO	D	504	-	3,3,3	0.04	0	2,2,2	0.18	0
4	EDO	D	508	-	3,3,3	0.12	0	2,2,2	0.49	0
4	EDO	A	507	-	3,3,3	0.32	0	2,2,2	0.50	0
7	PEG	D	515	-	6,6,6	0.31	0	5,5,5	0.33	0
7	PEG	C	508	-	6,6,6	0.26	0	5,5,5	0.21	0
4	EDO	D	505	-	3,3,3	0.27	0	2,2,2	0.30	0
4	EDO	C	503	-	3,3,3	0.14	0	2,2,2	0.12	0
4	EDO	A	512	-	3,3,3	0.29	0	2,2,2	0.30	0
5	EPE	C	506	-	15,15,15	1.67	1 (6%)	18,20,20	1.59	4 (22%)
4	EDO	D	506	-	3,3,3	0.21	0	2,2,2	0.40	0
4	EDO	D	503	-	3,3,3	0.41	0	2,2,2	0.54	0
4	EDO	D	507	-	3,3,3	0.11	0	2,2,2	0.39	0
4	EDO	A	511	-	3,3,3	0.14	0	2,2,2	0.44	0
4	EDO	C	504	-	3,3,3	0.19	0	2,2,2	0.33	0

Mol	Type	Chain	Res	Link	Bond lengths			Bond angles		
					Counts	RMSZ	# Z > 2	Counts	RMSZ	# Z > 2
5	EPE	D	516	-	15,15,15	2.52	2 (13%)	18,20,20	1.87	5 (27%)
6	R4H	D	512	-	37,40,40	0.86	2 (5%)	46,57,57	1.57	5 (10%)
4	EDO	B	506	-	3,3,3	0.37	0	2,2,2	0.86	0
4	EDO	B	503	-	3,3,3	0.11	0	2,2,2	0.36	0
7	PEG	D	513	-	6,6,6	0.29	0	5,5,5	0.18	0
4	EDO	B	505	-	3,3,3	0.13	0	2,2,2	0.16	0
4	EDO	D	509	-	3,3,3	0.07	0	2,2,2	0.24	0
4	EDO	D	511	-	3,3,3	0.65	0	2,2,2	0.83	0

In the following table, the Chirals column lists the number of chiral outliers, the number of chiral centers analysed, the number of these observed in the model and the number defined in the Chemical Component Dictionary. Similar counts are reported in the Torsion and Rings columns. '-' means no outliers of that kind were identified.

Mol	Type	Chain	Res	Link	Chirals	Torsions	Rings
4	EDO	A	506	-	-	1/1/1/1	-
6	R4H	C	507	-	1/1/5/6	4/15/48/48	0/5/5/5
4	EDO	A	504	-	-	1/1/1/1	-
4	EDO	C	509	-	-	0/1/1/1	-
4	EDO	D	510	-	-	1/1/1/1	-
4	EDO	B	504	-	-	1/1/1/1	-
5	EPE	B	509	-	-	5/9/19/19	0/1/1/1
4	EDO	C	505	-	-	0/1/1/1	-
4	EDO	A	509	-	-	1/1/1/1	-
5	EPE	B	510	-	-	3/9/19/19	0/1/1/1
4	EDO	A	505	-	-	1/1/1/1	-
5	EPE	A	510	-	-	9/9/19/19	0/1/1/1
7	PEG	D	514	-	-	3/4/4/4	-
6	R4H	B	508	-	1/1/5/6	9/15/48/48	0/5/5/5
4	EDO	A	508	-	-	0/1/1/1	-
4	EDO	A	503	-	-	1/1/1/1	-
4	EDO	B	507	-	-	1/1/1/1	-
4	EDO	D	504	-	-	0/1/1/1	-
4	EDO	D	508	-	-	1/1/1/1	-
4	EDO	A	507	-	-	1/1/1/1	-
7	PEG	D	515	-	-	2/4/4/4	-
7	PEG	C	508	-	-	2/4/4/4	-
4	EDO	D	505	-	-	1/1/1/1	-
4	EDO	C	503	-	-	1/1/1/1	-
4	EDO	A	512	-	-	0/1/1/1	-

Continued on next page...

Continued from previous page...

Mol	Type	Chain	Res	Link	Chirals	Torsions	Rings
5	EPE	C	506	-	-	2/9/19/19	0/1/1/1
4	EDO	D	506	-	-	1/1/1/1	-
4	EDO	D	503	-	-	0/1/1/1	-
4	EDO	D	507	-	-	1/1/1/1	-
4	EDO	A	511	-	-	1/1/1/1	-
4	EDO	C	504	-	-	1/1/1/1	-
5	EPE	D	516	-	-	5/9/19/19	0/1/1/1
6	R4H	D	512	-	1/1/5/6	7/15/48/48	0/5/5/5
4	EDO	B	506	-	-	1/1/1/1	-
4	EDO	B	503	-	-	1/1/1/1	-
7	PEG	D	513	-	-	3/4/4/4	-
4	EDO	B	505	-	-	1/1/1/1	-
4	EDO	D	509	-	-	1/1/1/1	-
4	EDO	D	511	-	-	1/1/1/1	-

All (12) bond length outliers are listed below:

Mol	Chain	Res	Type	Atoms	Z	Observed(Å)	Ideal(Å)
5	A	510	EPE	C10-S	-9.41	1.64	1.77
5	D	516	EPE	C10-S	-9.32	1.64	1.77
5	B	510	EPE	C10-S	-7.64	1.66	1.77
5	B	509	EPE	C10-S	-5.73	1.69	1.77
5	C	506	EPE	C10-S	-5.51	1.69	1.77
6	C	507	R4H	C5-C6	-3.78	1.47	1.52
6	B	508	R4H	C5-C6	-3.58	1.47	1.52
6	D	512	R4H	C5-C6	-3.41	1.47	1.52
5	D	516	EPE	O3S-S	-2.56	1.38	1.47
6	B	508	R4H	C7-N2	2.46	1.50	1.48
6	D	512	R4H	C7-N2	2.35	1.50	1.48
6	C	507	R4H	C15-C6	-2.09	1.53	1.57

All (38) bond angle outliers are listed below:

Mol	Chain	Res	Type	Atoms	Z	Observed(°)	Ideal(°)
6	C	507	R4H	C15-C6-C5	7.98	129.72	116.49
6	D	512	R4H	C15-C6-C5	7.61	129.10	116.49
6	B	508	R4H	C15-C6-C5	7.52	128.96	116.49
5	B	509	EPE	O3S-S-C10	6.84	116.83	105.77
5	D	516	EPE	O3S-S-C10	4.65	113.29	105.77
5	C	506	EPE	O3S-S-C10	3.77	111.86	105.77
6	B	508	R4H	N3-N4-N5	-3.72	107.11	109.53

Continued on next page...

Continued from previous page...

Mol	Chain	Res	Type	Atoms	Z	Observed(°)	Ideal(°)
6	C	507	R4H	N3-N4-N5	-3.70	107.12	109.53
5	D	516	EPE	C2-C3-N4	-3.48	103.50	110.64
6	D	512	R4H	N3-N4-N5	-3.36	107.34	109.53
5	A	510	EPE	O1S-S-C10	3.32	110.91	106.92
5	A	510	EPE	C6-C5-N4	-3.14	104.21	110.64
5	A	510	EPE	O2S-S-C10	3.12	110.68	106.92
5	D	516	EPE	O2S-S-O1S	-2.99	103.59	113.95
6	C	507	R4H	C25-N3-N4	2.87	107.43	104.87
6	B	508	R4H	C25-N3-N4	2.74	107.31	104.87
6	B	508	R4H	O2-C14-C15	-2.74	124.97	126.43
6	B	508	R4H	N6-N5-N4	2.73	111.32	109.53
5	C	506	EPE	O3S-S-O2S	-2.71	104.65	111.27
6	D	512	R4H	N6-N5-N4	2.52	111.18	109.53
5	B	509	EPE	O3S-S-O1S	-2.51	105.13	111.27
6	C	507	R4H	N6-C25-N3	-2.51	108.59	111.39
5	A	510	EPE	C9-N1-C6	-2.50	104.83	111.23
5	A	510	EPE	C2-C3-N4	-2.40	105.72	110.64
6	D	512	R4H	C25-N3-N4	2.37	106.98	104.87
5	D	516	EPE	O2S-S-C10	2.37	109.77	106.92
6	C	507	R4H	N6-N5-N4	2.26	111.01	109.53
6	C	507	R4H	C18-C5-C6	-2.23	116.66	120.49
5	B	510	EPE	O3S-S-C10	2.23	109.38	105.77
5	B	509	EPE	O1S-S-C10	2.21	109.57	106.92
5	C	506	EPE	C2-C3-N4	2.18	115.12	110.64
5	B	510	EPE	O1S-S-C10	2.18	109.54	106.92
6	B	508	R4H	O3-C19-C2	2.12	120.11	115.73
6	B	508	R4H	N6-C25-N3	-2.08	109.06	111.39
5	D	516	EPE	C6-C5-N4	2.08	114.90	110.64
6	D	512	R4H	O3-C19-C2	2.07	120.00	115.73
6	C	507	R4H	O3-C19-C2	2.04	119.94	115.73
5	C	506	EPE	C5-N4-C3	2.01	113.36	108.83

All (3) chirality outliers are listed below:

Mol	Chain	Res	Type	Atom
6	B	508	R4H	C6
6	C	507	R4H	C6
6	D	512	R4H	C6

All (75) torsion outliers are listed below:

Mol	Chain	Res	Type	Atoms
5	A	510	EPE	C10-C9-N1-C2
5	A	510	EPE	S-C10-C9-N1
5	A	510	EPE	C9-C10-S-O2S
5	A	510	EPE	C9-C10-S-O3S
5	B	509	EPE	S-C10-C9-N1
5	B	509	EPE	C9-C10-S-O2S
5	B	509	EPE	C9-C10-S-O3S
6	B	508	R4H	C23-C24-C25-N3
6	B	508	R4H	C23-C24-C25-N6
6	B	508	R4H	C26-C24-C25-N3
6	B	508	R4H	C26-C24-C25-N6
6	B	508	R4H	C18-C5-C6-C15
6	B	508	R4H	C4-C5-C6-C15
6	C	507	R4H	C18-C5-C6-C15
6	C	507	R4H	C4-C5-C6-C15
6	D	512	R4H	C18-C5-C6-C15
6	D	512	R4H	C4-C5-C6-C15
7	D	513	PEG	O1-C1-C2-O2
6	D	512	R4H	C19-C2-O1-C1
7	D	513	PEG	O2-C3-C4-O4
4	A	505	EDO	O1-C1-C2-O2
4	A	507	EDO	O1-C1-C2-O2
5	A	510	EPE	N4-C7-C8-O8
5	B	510	EPE	C9-C10-S-O3S
5	D	516	EPE	C9-C10-S-O3S
6	D	512	R4H	C3-C2-O1-C1
7	C	508	PEG	O1-C1-C2-O2
7	C	508	PEG	O2-C3-C4-O4
4	A	511	EDO	O1-C1-C2-O2
4	B	504	EDO	O1-C1-C2-O2
4	B	506	EDO	O1-C1-C2-O2
4	D	506	EDO	O1-C1-C2-O2
4	D	507	EDO	O1-C1-C2-O2
4	D	509	EDO	O1-C1-C2-O2
5	B	509	EPE	N4-C7-C8-O8
6	D	512	R4H	C18-C5-C6-N1
5	A	510	EPE	C10-C9-N1-C6
5	D	516	EPE	C10-C9-N1-C2
6	D	512	R4H	C4-C5-C6-N1
4	A	509	EDO	O1-C1-C2-O2
4	C	503	EDO	O1-C1-C2-O2
4	C	504	EDO	O1-C1-C2-O2
4	D	508	EDO	O1-C1-C2-O2

Continued on next page...

Continued from previous page...

Mol	Chain	Res	Type	Atoms
7	D	515	PEG	C1-C2-O2-C3
7	D	515	PEG	C4-C3-O2-C2
5	C	506	EPE	C9-C10-S-O3S
4	B	505	EDO	O1-C1-C2-O2
6	D	512	R4H	C21-C20-O3-C19
5	A	510	EPE	C9-C10-S-O1S
5	B	509	EPE	C9-C10-S-O1S
5	B	510	EPE	C9-C10-S-O1S
5	B	510	EPE	C9-C10-S-O2S
5	C	506	EPE	C9-C10-S-O1S
5	D	516	EPE	C9-C10-S-O1S
5	D	516	EPE	C9-C10-S-O2S
7	D	513	PEG	C1-C2-O2-C3
5	A	510	EPE	C8-C7-N4-C5
7	D	514	PEG	C4-C3-O2-C2
6	B	508	R4H	C21-C20-O3-C19
4	A	504	EDO	O1-C1-C2-O2
4	B	503	EDO	O1-C1-C2-O2
6	C	507	R4H	C21-C20-O3-C19
5	D	516	EPE	C10-C9-N1-C6
7	D	514	PEG	O2-C3-C4-O4
4	D	511	EDO	O1-C1-C2-O2
5	A	510	EPE	C8-C7-N4-C3
6	B	508	R4H	C18-C5-C6-N1
6	B	508	R4H	C4-C5-C6-N1
4	A	506	EDO	O1-C1-C2-O2
4	B	507	EDO	O1-C1-C2-O2
4	D	510	EDO	O1-C1-C2-O2
7	D	514	PEG	O1-C1-C2-O2
6	C	507	R4H	C18-C5-C6-N1
4	A	503	EDO	O1-C1-C2-O2
4	D	505	EDO	O1-C1-C2-O2

There are no ring outliers.

11 monomers are involved in 17 short contacts:

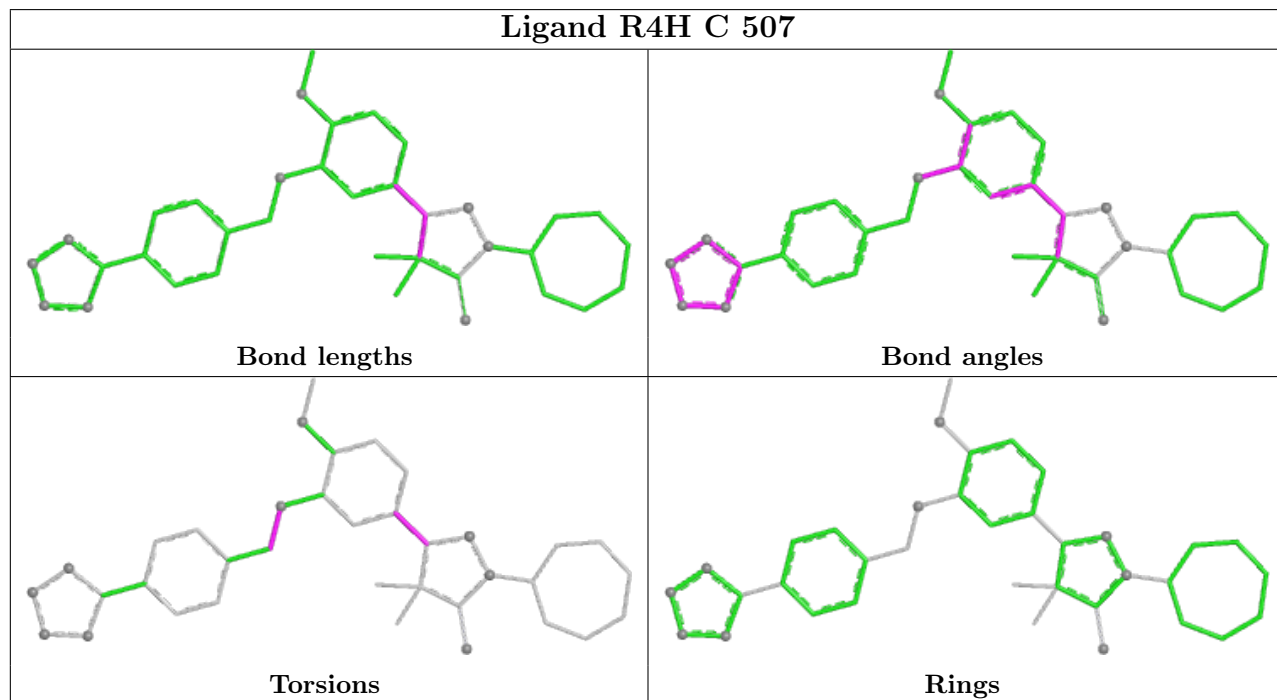
Mol	Chain	Res	Type	Clashes	Symm-Clashes
6	C	507	R4H	1	0
5	B	509	EPE	2	0
4	A	509	EDO	1	0
5	A	510	EPE	3	0
6	B	508	R4H	1	0

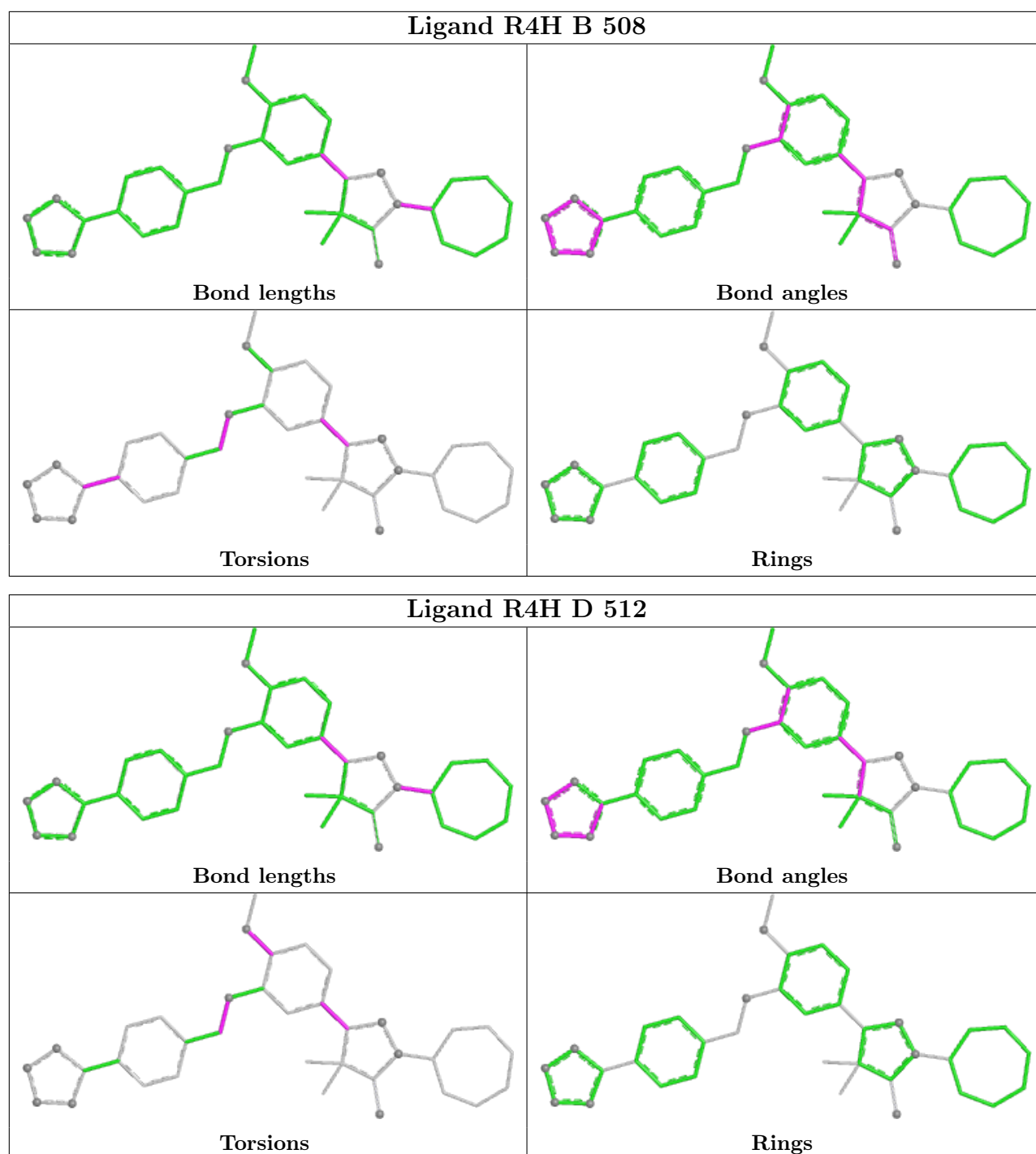
Continued on next page...

Continued from previous page...

Mol	Chain	Res	Type	Clashes	Symm-Clashes
7	D	515	PEG	1	0
4	A	512	EDO	1	0
4	A	511	EDO	1	0
5	D	516	EPE	2	0
6	D	512	R4H	2	0
4	B	506	EDO	2	0

The following is a two-dimensional graphical depiction of Mogul quality analysis of bond lengths, bond angles, torsion angles, and ring geometry for all instances of the Ligand of Interest. In addition, ligands with molecular weight > 250 and outliers as shown on the validation Tables will also be included. For torsion angles, if less than 5% of the Mogul distribution of torsion angles is within 10 degrees of the torsion angle in question, then that torsion angle is considered an outlier. Any bond that is central to one or more torsion angles identified as an outlier by Mogul will be highlighted in the graph. For rings, the root-mean-square deviation (RMSD) between the ring in question and similar rings identified by Mogul is calculated over all ring torsion angles. If the average RMSD is greater than 60 degrees and the minimal RMSD between the ring in question and any Mogul-identified rings is also greater than 60 degrees, then that ring is considered an outlier. The outliers are highlighted in purple. The color gray indicates Mogul did not find sufficient equivalents in the CSD to analyse the geometry.





5.7 Other polymers [\(i\)](#)

There are no such residues in this entry.

5.8 Polymer linkage issues [\(i\)](#)

There are no chain breaks in this entry.

6 Fit of model and data

6.1 Protein, DNA and RNA chains

In the following table, the column labelled ‘#RSRZ > 2’ contains the number (and percentage) of RSRZ outliers, followed by percent RSRZ outliers for the chain as percentile scores relative to all X-ray entries and entries of similar resolution. The OWAB column contains the minimum, median, 95th percentile and maximum values of the occupancy-weighted average B-factor per residue. The column labelled ‘Q < 0.9’ lists the number of (and percentage) of residues with an average occupancy less than 0.9.

Mol	Chain	Analysed	<RSRZ>	#RSRZ>2	OWAB(Å ²)	Q<0.9
1	A	329/364 (90%)	0.87	28 (8%) 10 10	32, 50, 91, 155	0
1	B	324/364 (89%)	1.03	45 (13%) 2 2	34, 64, 95, 127	0
1	C	325/364 (89%)	0.85	38 (11%) 4 3	33, 58, 96, 139	0
1	D	324/364 (89%)	0.68	13 (4%) 38 38	30, 45, 84, 110	0
All	All	1302/1456 (89%)	0.86	124 (9%) 8 7	30, 55, 92, 155	0

All (124) RSRZ outliers are listed below:

Mol	Chain	Res	Type	RSRZ
1	A	294	SER	17.4
1	B	294	SER	8.0
1	A	295	SER	7.5
1	A	362	ASN	7.2
1	C	296	GLY	7.0
1	D	362	ASN	6.4
1	C	295	SER	6.4
1	A	363	ALA	5.9
1	D	357	MET	5.8
1	A	296	GLY	5.6
1	B	93	ALA	5.3
1	A	84	VAL	5.0
1	A	297	VAL	4.9
1	A	293	THR	4.9
1	B	123	HIS	4.6
1	B	108	ARG	4.6
1	C	287	VAL	4.5
1	C	294	SER	4.4
1	A	287	VAL	4.4
1	C	293	THR	4.3
1	A	364	SER	4.1

Continued on next page...

Continued from previous page...

Mol	Chain	Res	Type	RSRZ
1	B	253	THR	4.0
1	A	83	GLY	4.0
1	B	130	ASP	3.9
1	B	295	SER	3.9
1	C	300	LEU	3.9
1	D	215	THR	3.8
1	D	353	GLU	3.8
1	B	395	ILE	3.8
1	A	411	PRO	3.8
1	B	97	GLU	3.8
1	B	195	PHE	3.7
1	D	221	LEU	3.7
1	A	351	GLY	3.7
1	D	342	ARG	3.7
1	C	297	VAL	3.7
1	C	302	ASN	3.5
1	D	227	SER	3.5
1	B	286	MET	3.5
1	C	292	VAL	3.5
1	B	307	ILE	3.4
1	A	352	MET	3.4
1	B	181	LEU	3.4
1	C	183	ALA	3.2
1	B	132	LEU	3.2
1	A	375	TYR	3.2
1	D	351	GLY	3.1
1	B	92	LEU	3.1
1	B	391	ASP	3.1
1	C	289	THR	3.1
1	C	259	SER	3.1
1	D	361	HIS	3.0
1	A	353	GLU	3.0
1	B	389	HIS	3.0
1	A	289	THR	2.9
1	C	87	GLU	2.9
1	B	98	ASP	2.8
1	B	90	ASP	2.8
1	A	372	PHE	2.8
1	B	257	ARG	2.8
1	B	258	GLN	2.8
1	B	190	ILE	2.8
1	C	409	THR	2.7

Continued on next page...

Continued from previous page...

Mol	Chain	Res	Type	RSRZ
1	B	128	GLU	2.7
1	C	139	VAL	2.7
1	C	174	VAL	2.7
1	B	288	GLU	2.7
1	C	132	LEU	2.7
1	C	363	ALA	2.7
1	C	389	HIS	2.7
1	C	130	ASP	2.6
1	C	285	THR	2.6
1	A	181	LEU	2.6
1	B	133	LYS	2.6
1	C	94	LYS	2.6
1	B	192	ALA	2.6
1	C	394	ASP	2.5
1	B	89	GLU	2.5
1	C	133	LYS	2.5
1	B	139	VAL	2.5
1	B	112	LEU	2.4
1	C	313	MET	2.4
1	A	183	ALA	2.4
1	D	246	CYS	2.4
1	C	136	LYS	2.4
1	C	288	GLU	2.4
1	A	186	THR	2.4
1	C	308	GLN	2.4
1	B	117	PRO	2.4
1	A	299	LEU	2.4
1	A	385	ALA	2.4
1	C	97	GLU	2.3
1	B	140	ASP	2.3
1	B	127	GLN	2.3
1	A	281	ALA	2.3
1	B	323	THR	2.3
1	C	299	LEU	2.2
1	B	94	LYS	2.2
1	B	136	LYS	2.2
1	B	238	PHE	2.2
1	C	319	LEU	2.2
1	B	302	ASN	2.2
1	B	297	VAL	2.2
1	D	89	GLU	2.2
1	A	221	LEU	2.2

Continued on next page...

Continued from previous page...

Mol	Chain	Res	Type	RSRZ
1	C	257	ARG	2.2
1	B	106	VAL	2.2
1	A	298	LEU	2.2
1	B	250	GLN	2.2
1	C	253	THR	2.2
1	B	142	LEU	2.2
1	C	179	PRO	2.2
1	B	306	ARG	2.1
1	A	215	THR	2.1
1	B	392	ALA	2.1
1	C	286	MET	2.1
1	B	361	HIS	2.1
1	C	303	TYR	2.1
1	A	105	HIS	2.1
1	D	94	LYS	2.1
1	B	144	THR	2.1
1	C	309	VAL	2.1
1	D	202	VAL	2.1
1	C	395	ILE	2.0

6.2 Non-standard residues in protein, DNA, RNA chains [i](#)

There are no non-standard protein/DNA/RNA residues in this entry.

6.3 Carbohydrates [i](#)

There are no monosaccharides in this entry.

6.4 Ligands [i](#)

In the following table, the Atoms column lists the number of modelled atoms in the group and the number defined in the chemical component dictionary. The B-factors column lists the minimum, median, 95th percentile and maximum values of B factors of atoms in the group. The column labelled 'Q< 0.9' lists the number of atoms with occupancy less than 0.9.

Mol	Type	Chain	Res	Atoms	RSCC	RSR	B-factors(Å ²)	Q<0.9
7	PEG	D	513	7/7	0.49	0.27	73,77,85,87	0
6	R4H	B	508	36/36	0.51	0.37	74,102,155,167	0
4	EDO	D	511	4/4	0.51	0.29	58,61,67,72	0
7	PEG	D	515	7/7	0.52	0.27	81,84,87,93	0

Continued on next page...

Continued from previous page...

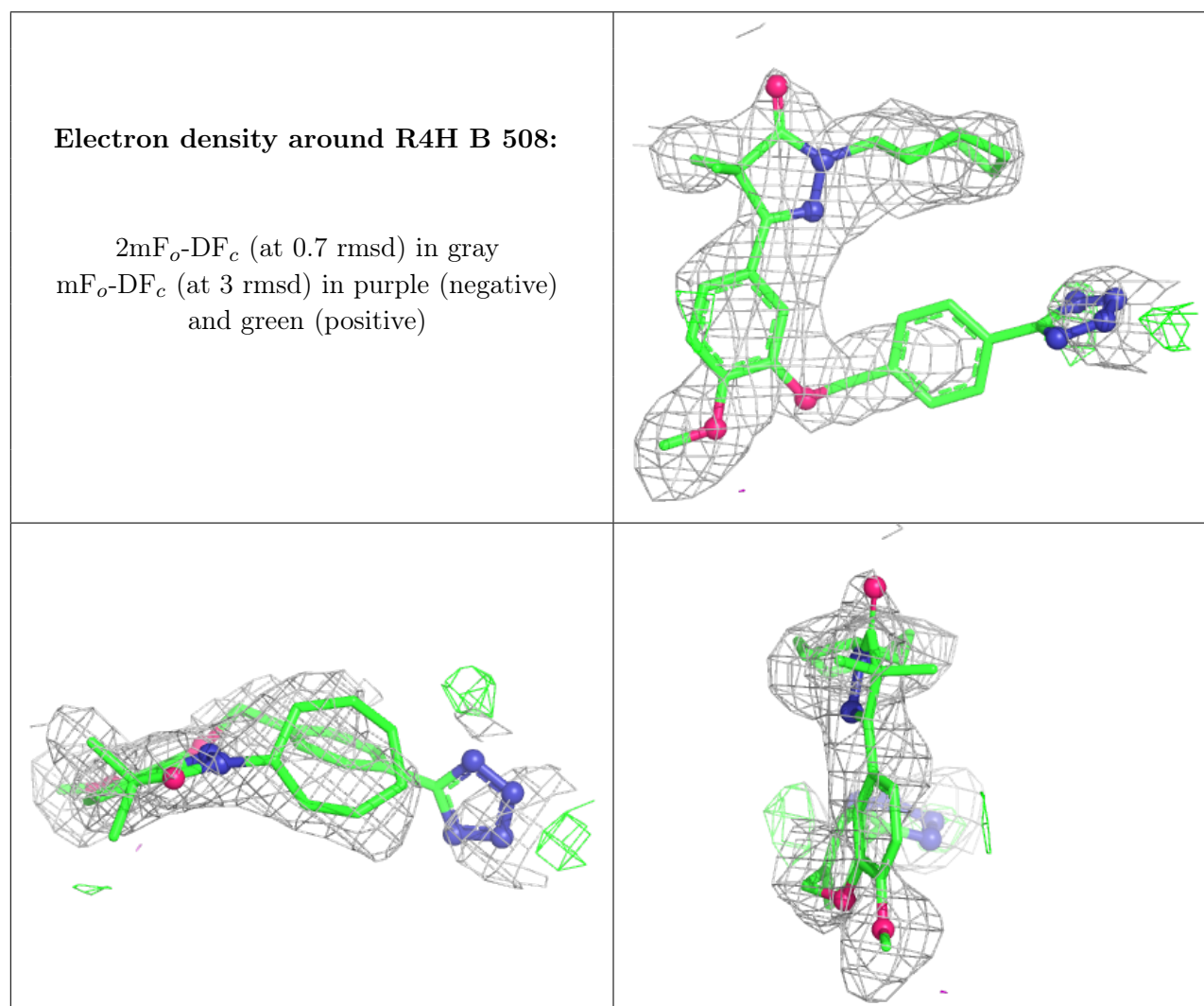
Mol	Type	Chain	Res	Atoms	RSCC	RSR	B-factors(\AA^2)	Q<0.9
6	R4H	D	512	36/36	0.61	0.42	61,105,171,177	0
4	EDO	D	510	4/4	0.63	0.25	59,65,65,74	0
4	EDO	A	504	4/4	0.65	0.24	72,73,77,83	0
4	EDO	C	504	4/4	0.68	0.43	75,80,82,90	0
4	EDO	A	508	4/4	0.70	0.24	59,70,70,71	0
4	EDO	A	503	4/4	0.70	0.32	79,82,83,86	0
4	EDO	D	505	4/4	0.70	0.28	56,60,64,76	0
6	R4H	C	507	36/36	0.71	0.37	62,89,146,160	0
5	EPE	A	510	15/15	0.72	0.55	49,130,157,158	0
4	EDO	A	509	4/4	0.73	0.24	49,52,52,53	0
4	EDO	D	504	4/4	0.74	0.24	86,89,89,98	0
4	EDO	B	504	4/4	0.74	0.22	59,66,69,69	0
4	EDO	A	507	4/4	0.75	0.40	59,61,80,82	0
5	EPE	B	509	15/15	0.76	0.30	68,150,169,170	0
7	PEG	D	514	7/7	0.77	0.20	60,72,77,78	0
5	EPE	D	516	15/15	0.77	0.36	38,117,136,136	0
4	EDO	A	505	4/4	0.78	0.19	82,87,91,93	0
4	EDO	C	505	4/4	0.81	0.23	65,77,77,79	0
7	PEG	C	508	7/7	0.82	0.25	74,75,78,80	0
4	EDO	C	509	4/4	0.82	0.23	72,75,79,84	0
5	EPE	B	510	15/15	0.82	0.23	108,119,124,128	0
4	EDO	B	506	4/4	0.82	0.47	58,63,64,67	0
4	EDO	D	509	4/4	0.83	0.19	51,54,58,65	0
4	EDO	C	503	4/4	0.83	0.26	77,79,81,85	0
4	EDO	B	507	4/4	0.84	0.23	67,71,71,75	0
4	EDO	A	512	4/4	0.85	0.20	55,60,67,68	0
4	EDO	A	511	4/4	0.87	0.22	63,65,68,71	0
4	EDO	D	506	4/4	0.88	0.14	50,56,56,62	0
4	EDO	D	507	4/4	0.88	0.26	69,71,74,74	0
4	EDO	B	503	4/4	0.90	0.22	62,64,70,70	0
5	EPE	C	506	15/15	0.90	0.28	57,96,108,109	0
3	MG	A	502	1/1	0.91	0.12	32,32,32,32	0
4	EDO	B	505	4/4	0.91	0.37	71,75,76,79	0
4	EDO	D	508	4/4	0.91	0.22	52,54,58,61	0
3	MG	C	502	1/1	0.92	0.07	32,32,32,32	0
4	EDO	A	506	4/4	0.93	0.23	60,72,73,75	0
4	EDO	D	503	4/4	0.93	0.19	48,52,52,53	0
3	MG	B	502	1/1	0.95	0.13	33,33,33,33	0
3	MG	D	502	1/1	0.96	0.12	33,33,33,33	0
2	ZN	B	501	1/1	0.98	0.10	52,52,52,52	0
2	ZN	C	501	1/1	0.99	0.11	48,48,48,48	0
2	ZN	D	501	1/1	0.99	0.13	42,42,42,42	0

Continued on next page...

Continued from previous page...

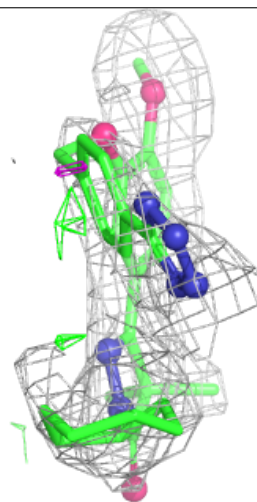
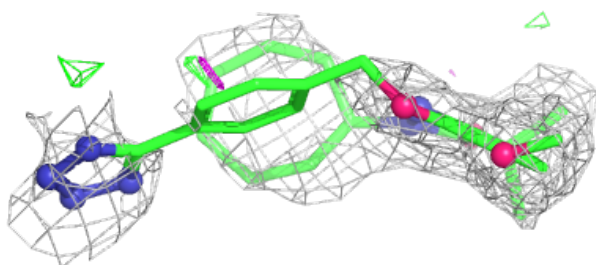
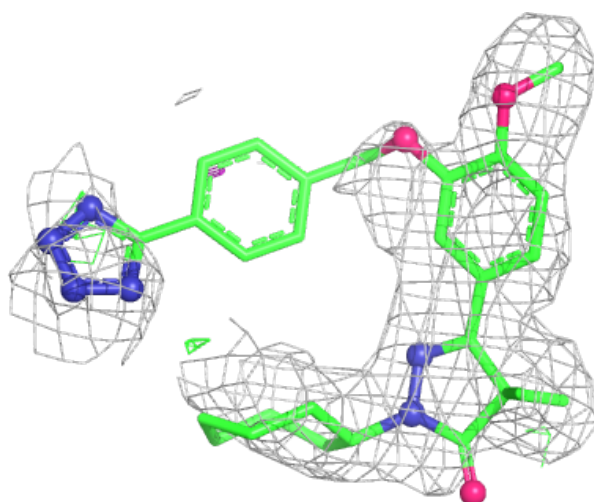
Mol	Type	Chain	Res	Atoms	RSCC	RSR	B-factors(\AA^2)	Q<0.9
2	ZN	A	501	1/1	0.99	0.12	44,44,44,44	0

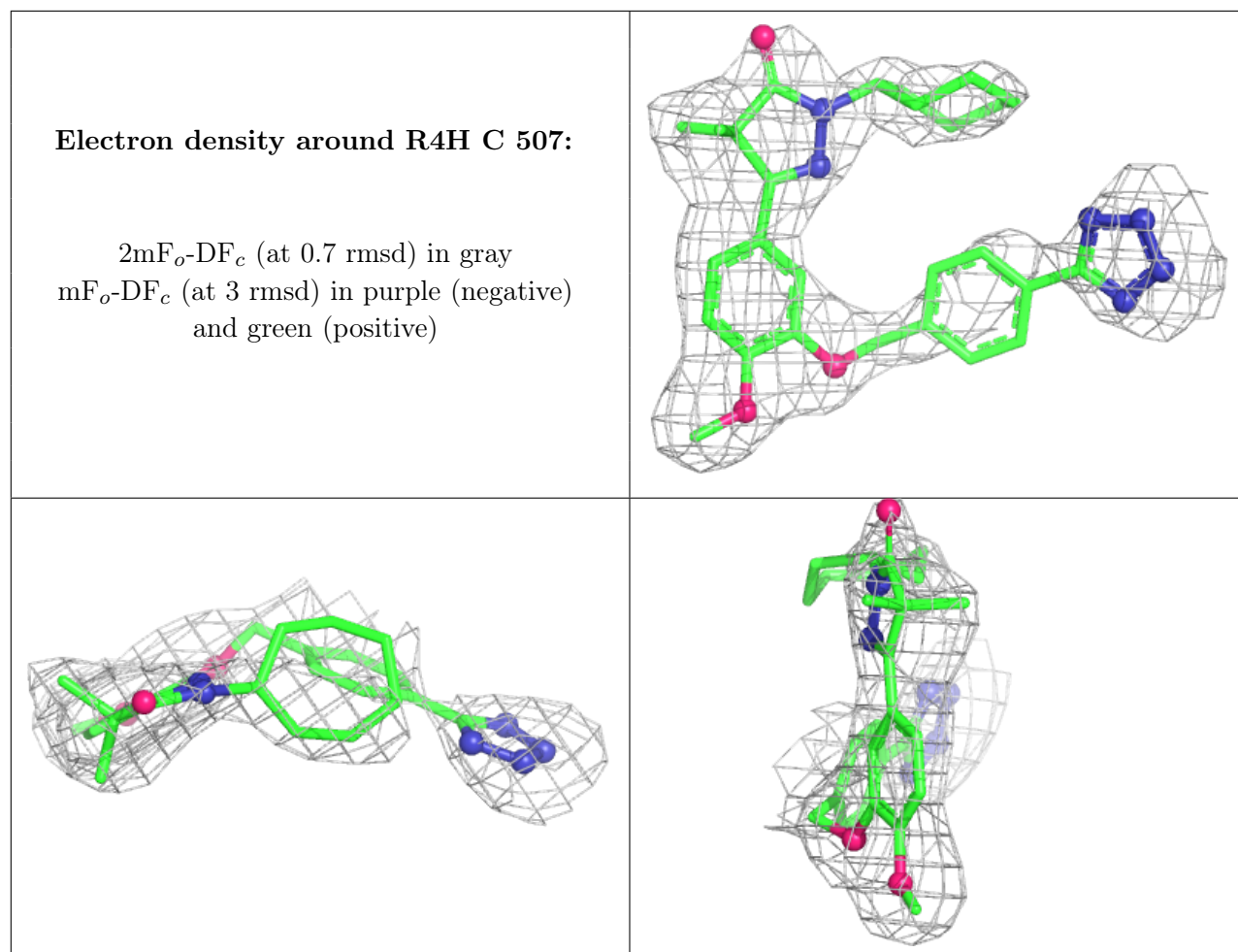
The following is a graphical depiction of the model fit to experimental electron density of all instances of the Ligand of Interest. In addition, ligands with molecular weight > 250 and outliers as shown on the geometry validation Tables will also be included. Each fit is shown from different orientation to approximate a three-dimensional view.



Electron density around R4H D 512:

$2mF_o-DF_c$ (at 0.7 rmsd) in gray
 mF_o-DF_c (at 3 rmsd) in purple (negative)
and green (positive)





6.5 Other polymers [i](#)

There are no such residues in this entry.