



wwPDB EM Validation Summary Report ⓘ

Nov 20, 2022 – 03:09 PM JST

PDB ID : 7BWA
EMDB ID : EMD-30231
Title : Cryo-EM Structure for the Ectodomain of the Full-length Human Insulin Receptor in Complex with 2 Insulin
Authors : Yu, D.; Zhang, X.; Sun, J.; Li, X.; Wu, Z.; Han, X.; Fan, C.; Ma, Y.; Ouyang, Q.; Wang, T.
Deposited on : 2020-04-14
Resolution : 4.90 Å (reported)
Based on initial model : 6PXV

This is a wwPDB EM Validation Summary Report for a publicly released PDB entry.

We welcome your comments at validation@mail.wwpdb.org

A user guide is available at

<https://www.wwpdb.org/validation/2017/EMValidationReportHelp>

with specific help available everywhere you see the ⓘ symbol.

The types of validation reports are described at

<http://www.wwpdb.org/validation/2017/FAQs#types>.

The following versions of software and data (see [references ⓘ](#)) were used in the production of this report:

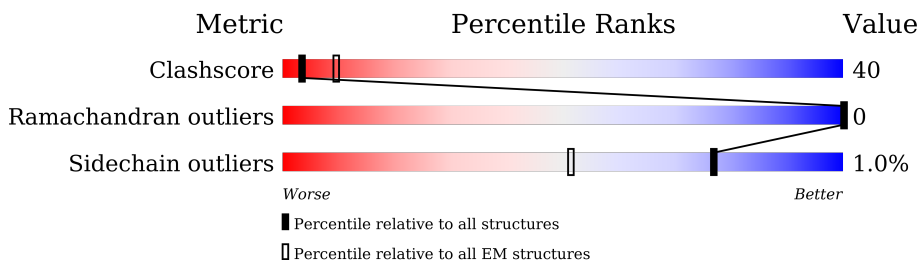
EMDB validation analysis : 0.0.1.dev43
MolProbity : 4.02b-467
Percentile statistics : 20191225.v01 (using entries in the PDB archive December 25th 2019)
MapQ : 1.9.9
Ideal geometry (proteins) : Engh & Huber (2001)
Ideal geometry (DNA, RNA) : Parkinson et al. (1996)
Validation Pipeline (wwPDB-VP) : 2.31.3

1 Overall quality at a glance

The following experimental techniques were used to determine the structure:
ELECTRON MICROSCOPY

The reported resolution of this entry is 4.90 Å.

Percentile scores (ranging between 0-100) for global validation metrics of the entry are shown in the following graphic. The table shows the number of entries on which the scores are based.



Metric	Whole archive (#Entries)	EM structures (#Entries)
Clashscore	158937	4297
Ramachandran outliers	154571	4023
Sidechain outliers	154315	3826

The table below summarises the geometric issues observed across the polymeric chains and their fit to the map. The red, orange, yellow and green segments of the bar indicate the fraction of residues that contain outliers for ≥ 3 , 2, 1 and 0 types of geometric quality criteria respectively. A grey segment represents the fraction of residues that are not modelled. The numeric value for each fraction is indicated below the corresponding segment, with a dot representing fractions $\leq 5\%$. The upper red bar (where present) indicates the fraction of residues that have poor fit to the EM map (all-atom inclusion $< 40\%$). The numeric value is given above the bar.

Mol	Chain	Length	Quality of chain
1	A	1355	
1	C	1355	
2	D	74	
2	E	74	

2 Entry composition

There are 2 unique types of molecules in this entry. The entry contains 11670 atoms, of which 0 are hydrogens and 0 are deuteriums.

In the tables below, the AltConf column contains the number of residues with at least one atom in alternate conformation and the Trace column contains the number of residues modelled with at most 2 atoms.

- Molecule 1 is a protein called Insulin receptor.

Mol	Chain	Residues	Atoms					AltConf	Trace
			Total	C	N	O	S		
1	A	674	Total	C	N	O	S	0	0
			5459	3472	938	1008	41		
1	C	674	Total	C	N	O	S	0	0
			5459	3472	938	1008	41		

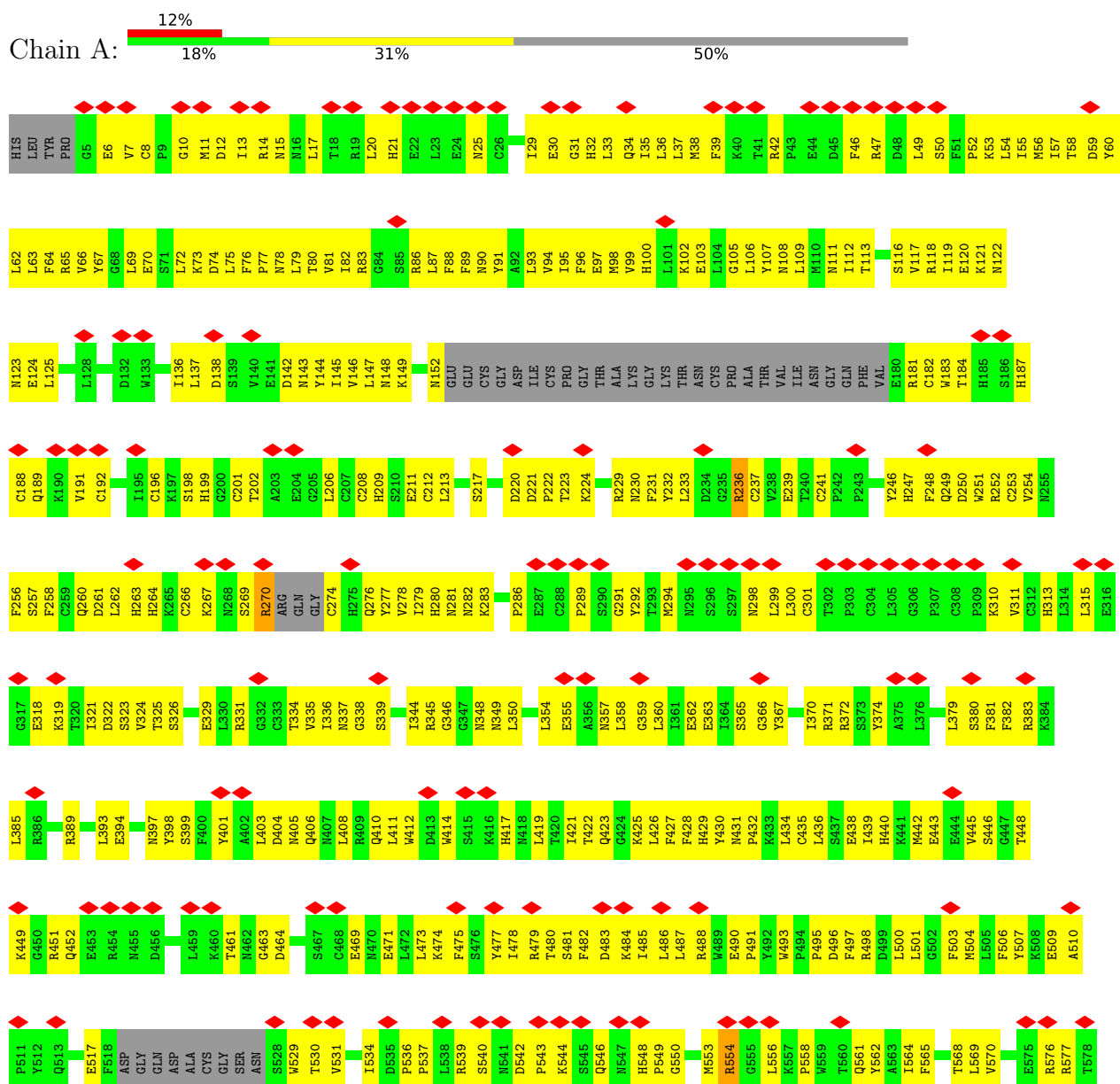
- Molecule 2 is a protein called Insulin fusion.

Mol	Chain	Residues	Atoms					AltConf	Trace
			Total	C	N	O	S		
2	D	48	Total	C	N	O	S	0	0
			376	238	61	71	6		
2	E	48	Total	C	N	O	S	0	0
			376	238	61	71	6		

3 Residue-property plots i

These plots are drawn for all protein, RNA, DNA and oligosaccharide chains in the entry. The first graphic for a chain summarises the proportions of the various outlier classes displayed in the second graphic. The second graphic shows the sequence view annotated by issues in geometry and atom inclusion in map density. Residues are color-coded according to the number of geometric quality criteria for which they contain at least one outlier: green = 0, yellow = 1, orange = 2 and red = 3 or more. A red diamond above a residue indicates a poor fit to the EM map for this residue (all-atom inclusion < 40%). Stretches of 2 or more consecutive residues without any outlier are shown as a green connector. Residues present in the sample, but not in the model, are shown in grey.

- Molecule 1: Insulin receptor



LYS GLY GLN PRO THR LEU VAL MET GLU LEU MET VAL HIS GLY ASP LEU SER LYS SER TYR LEU ARG SER PHE LEU GLY ARG MET LEU LEU VAL CYS GLY VAL MET VAL ALA HIS GLY ASP PHE THR LYS SER VAL SER TYR LEU ILE LEU GLY ASP SER PHE LEU GLY MET GLY ARG PRO GLU GLY SER ASN ALA GLU ASP ILE TYR ASN VAL ASN PRO GLY ARG PHE VAL TYR THR GLY THR VAL PHE GLY MET GLY LEU GLY LEU GLY LEU LEU ILE LEU GLN PRO MET ASP VAL ALA ALA GLU ASP MET GLY GLY THR ASN PHE PRO VAL PHE CYS PRO GLU ASP MET VAL GLU ASN PHE VAL ASP SER SER
THR SER SER ASP MET TRP SER PHE GLY VAL LEU VAL LEU TPP GLU ILE THR SER LYS ASP ALA GLU GLN LEU PRO TYR SER GLY PHE GLN HIS PRO GLY LEU SER ASN PHE GLU HIS MET GLN VAL SER LEU GLY GLY LYS VAL LYS ASN LYS MET PRO GLY GLY TYR SER LEU GLY ASP LEU GLN PRO ASP ASN CYS PRO GLU ASP MET VAL THR ASP LEU MET ASP MET ARG SER TRP GLN
PHE ASN PRO LYS MET ARG PRO THR PHE LEU LEU GLY ILE VAL SER ASN LEU LEU GLY PHE LYS SER ASP LEU HIS TYR SER GLU PRO GLU SER PHE HIS ASN VAL SER LEU GLY GLY LYS ASN VAL LYS ASN ALA PRO GLY SER LEU GLY THR HIS MET ASN GLY GLY LYS ASN VAL LYS ASP GLN PRO SER SER ASN PHE VAL ASP SER ARG SER HIS
CYS GLN ARG GLU GLU ALA GLY GLY ARG LEU GLY GLY SER SER LEU PHE LYS ARG SER TYR GLU GLY ILE PRO TYR THR HIS MET ASN GLY GLY LYS ASN VAL LYS ASN GLY ARG ILE LEU THR LEU PRO ARG SER ASN PHE VAL PRO SER

● Molecule 2: Insulin fusion



PHE V2 L6 C7 G8 H10 L11 V12 E13 A14 L15 Y16 L17 V18 C19 G20 E21 R22 G23 F24 T27 P28	LYS THR ARG GLU ALA GLU ASP LEU GLN GLY SER LEU GLN PRO LEU ALA LEU GLU GLY SER LEU GLN PRO LEU ALA LEU LEU GLY SER LEU GLN LYS ARG	G56 I57 V58 E59 D60 C61 C62 T63 S64 I65
--	---	--

● Molecule 2: Insulin fusion



PHE V2 M3 Q4 H5 L6 C7 G8 L11 V12 E13 A14 L15 Y16 L17 V18 C19 G20 E21 R22 G23 F24 F25 P28	LYS THR ARG GLU ALA GLU ASP LEU GLN GLY SER LEU GLN PRO LEU ALA LEU LEU GLY SER LEU GLN LYS ARG	G56 I57 V58 E59 C62 T63 C66
---	--	---

4 Experimental information

Property	Value	Source
EM reconstruction method	SINGLE PARTICLE	Depositor
Imposed symmetry	POINT, C1	Depositor
Number of particles used	368511	Depositor
Resolution determination method	FSC 0.143 CUT-OFF	Depositor
CTF correction method	PHASE FLIPPING AND AMPLITUDE CORRECTION	Depositor
Microscope	FEI TITAN KRIOS	Depositor
Voltage (kV)	300	Depositor
Electron dose ($e^-/\text{\AA}^2$)	50.0	Depositor
Minimum defocus (nm)	700	Depositor
Maximum defocus (nm)	2700	Depositor
Magnification	43796	Depositor
Image detector	GATAN K2 QUANTUM (4k x 4k)	Depositor
Maximum map value	0.098	Depositor
Minimum map value	-0.070	Depositor
Average map value	0.001	Depositor
Map value standard deviation	0.004	Depositor
Recommended contour level	0.023	Depositor
Map size (Å)	219.2, 219.2, 219.2	wwPDB
Map dimensions	160, 160, 160	wwPDB
Map angles (°)	90.0, 90.0, 90.0	wwPDB
Pixel spacing (Å)	1.37, 1.37, 1.37	Depositor

5 Model quality

5.1 Standard geometry

The Z score for a bond length (or angle) is the number of standard deviations the observed value is removed from the expected value. A bond length (or angle) with $|Z| > 5$ is considered an outlier worth inspection. RMSZ is the root-mean-square of all Z scores of the bond lengths (or angles).

Mol	Chain	Bond lengths		Bond angles	
		RMSZ	# Z >5	RMSZ	# Z >5
1	A	0.30	0/5589	0.50	0/7569
1	C	0.30	0/5589	0.50	0/7569
2	D	0.33	0/383	0.52	0/518
2	E	0.34	0/383	0.52	0/518
All	All	0.31	0/11944	0.50	0/16174

There are no bond length outliers.

There are no bond angle outliers.

There are no chirality outliers.

There are no planarity outliers.

5.2 Too-close contacts

In the following table, the Non-H and H(model) columns list the number of non-hydrogen atoms and hydrogen atoms in the chain respectively. The H(added) column lists the number of hydrogen atoms added and optimized by MolProbity. The Clashes column lists the number of clashes within the asymmetric unit, whereas Symm-Clashes lists symmetry-related clashes.

Mol	Chain	Non-H	H(model)	H(added)	Clashes	Symm-Clashes
1	A	5459	0	5329	454	0
1	C	5459	0	5329	454	0
2	D	376	0	346	25	0
2	E	376	0	346	24	0
All	All	11670	0	11350	924	0

The all-atom clashscore is defined as the number of clashes found per 1000 atoms (including hydrogen atoms). The all-atom clashscore for this structure is 40.

The worst 5 of 924 close contacts within the same asymmetric unit are listed below, sorted by their clash magnitude.

Atom-1	Atom-2	Interatomic distance (Å)	Clash overlap (Å)
1:C:436:LEU:HD21	1:C:577:ARG:CD	1.74	1.16
1:A:576:ARG:HD3	1:A:579:TYR:CE1	1.89	1.08
1:A:484:LYS:HA	1:A:553:MET:O	1.57	1.02
1:C:484:LYS:HA	1:C:553:MET:O	1.57	1.01
1:C:469:GLU:HA	1:C:577:ARG:HH12	1.21	0.99

There are no symmetry-related clashes.

5.3 Torsion angles [i](#)

5.3.1 Protein backbone [i](#)

In the following table, the Percentiles column shows the percent Ramachandran outliers of the chain as a percentile score with respect to all PDB entries followed by that with respect to all EM entries.

The Analysed column shows the number of residues for which the backbone conformation was analysed, and the total number of residues.

Mol	Chain	Analysed	Favoured	Allowed	Outliers	Percentiles	
1	A	660/1355 (49%)	571 (86%)	89 (14%)	0	100	100
1	C	660/1355 (49%)	571 (86%)	89 (14%)	0	100	100
2	D	44/74 (60%)	39 (89%)	5 (11%)	0	100	100
2	E	44/74 (60%)	39 (89%)	5 (11%)	0	100	100
All	All	1408/2858 (49%)	1220 (87%)	188 (13%)	0	100	100

There are no Ramachandran outliers to report.

5.3.2 Protein sidechains [i](#)

In the following table, the Percentiles column shows the percent sidechain outliers of the chain as a percentile score with respect to all PDB entries followed by that with respect to all EM entries.

The Analysed column shows the number of residues for which the sidechain conformation was analysed, and the total number of residues.

Mol	Chain	Analysed	Rotameric	Outliers	Percentiles	
1	A	618/1212 (51%)	613 (99%)	5 (1%)	81	89
1	C	618/1212 (51%)	612 (99%)	6 (1%)	76	86

Continued on next page...

Continued from previous page...

Mol	Chain	Analysed	Rotameric	Outliers	Percentiles	
2	D	43/65 (66%)	42 (98%)	1 (2%)	50	70
2	E	43/65 (66%)	42 (98%)	1 (2%)	50	70
All	All	1322/2554 (52%)	1309 (99%)	13 (1%)	77	86

5 of 13 residues with a non-rotameric sidechain are listed below:

Mol	Chain	Res	Type
1	C	554	ARG
1	C	576	ARG
2	E	22	ARG
1	C	634	ARG
2	D	22	ARG

Sometimes sidechains can be flipped to improve hydrogen bonding and reduce clashes. 5 of 25 such sidechains are listed below:

Mol	Chain	Res	Type
1	C	34	GLN
1	C	282	ASN
1	C	610	GLN
1	C	199	HIS
1	C	337	ASN

5.3.3 RNA [i](#)

There are no RNA molecules in this entry.

5.4 Non-standard residues in protein, DNA, RNA chains [i](#)

There are no non-standard protein/DNA/RNA residues in this entry.

5.5 Carbohydrates [i](#)

There are no monosaccharides in this entry.

5.6 Ligand geometry [i](#)

There are no ligands in this entry.

5.7 Other polymers [i](#)

There are no such residues in this entry.

5.8 Polymer linkage issues [i](#)

There are no chain breaks in this entry.

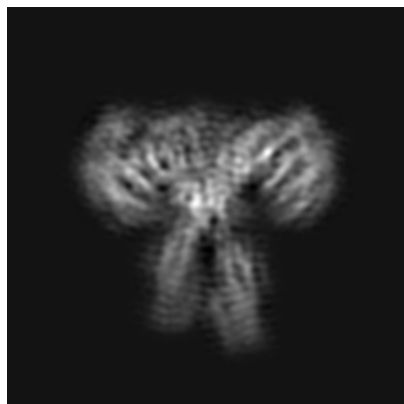
6 Map visualisation [i](#)

This section contains visualisations of the EMDB entry EMD-30231. These allow visual inspection of the internal detail of the map and identification of artifacts.

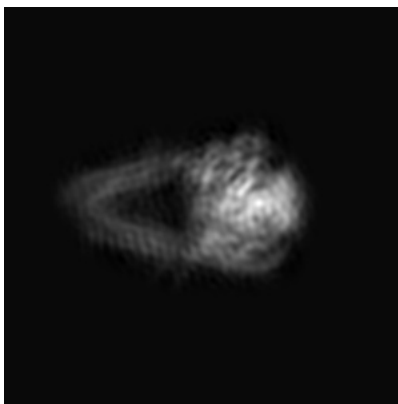
Images derived from a raw map, generated by summing the deposited half-maps, are presented below the corresponding image components of the primary map to allow further visual inspection and comparison with those of the primary map.

6.1 Orthogonal projections [i](#)

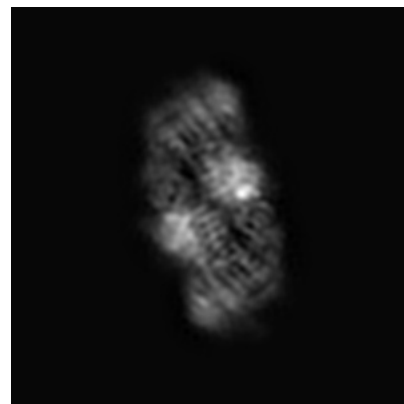
6.1.1 Primary map



X

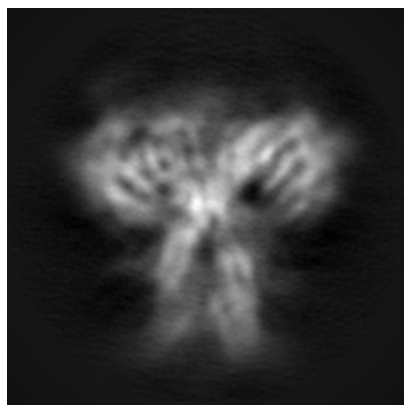


Y

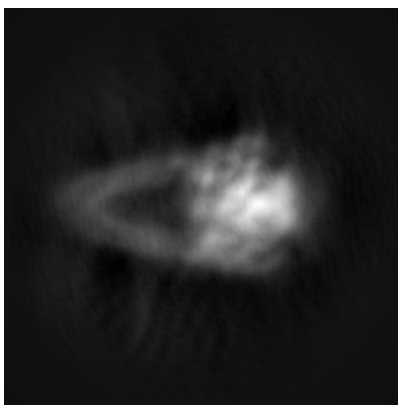


Z

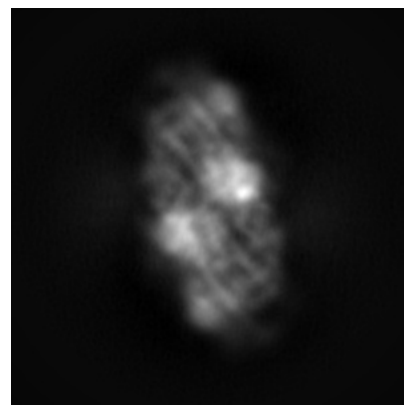
6.1.2 Raw map



X



Y

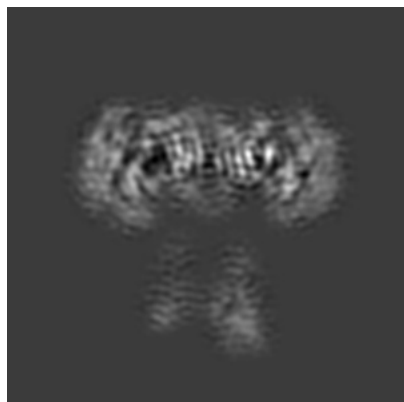


Z

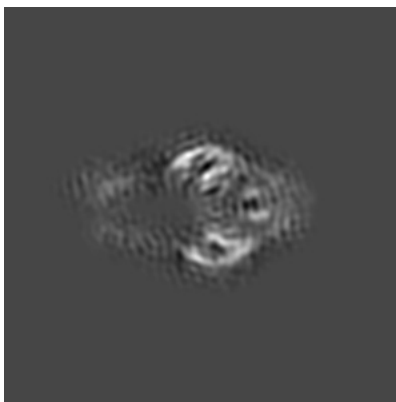
The images above show the map projected in three orthogonal directions.

6.2 Central slices [i](#)

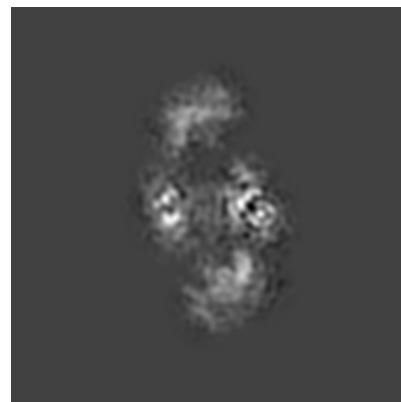
6.2.1 Primary map



X Index: 80

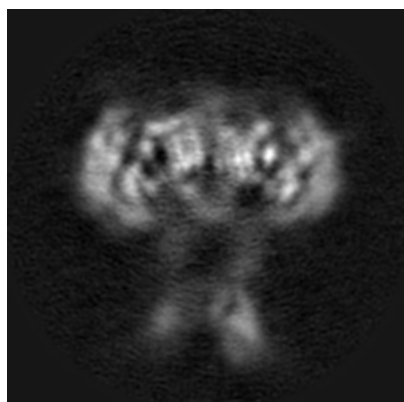


Y Index: 80

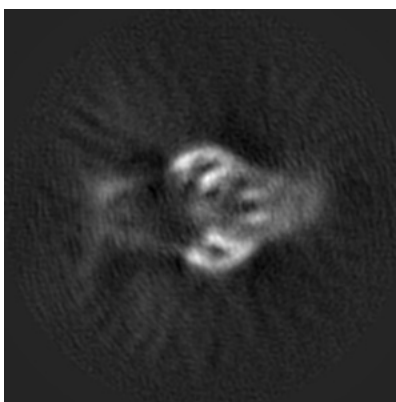


Z Index: 80

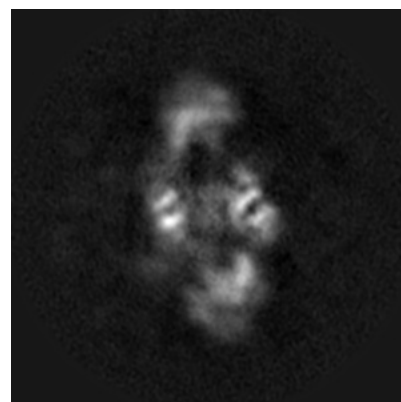
6.2.2 Raw map



X Index: 80



Y Index: 80

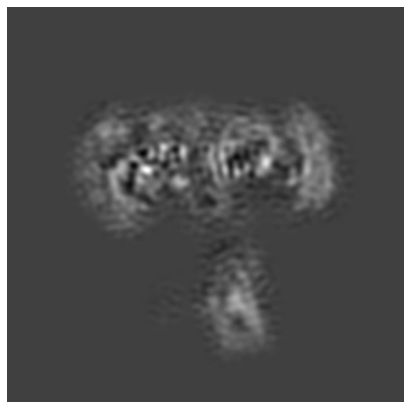


Z Index: 80

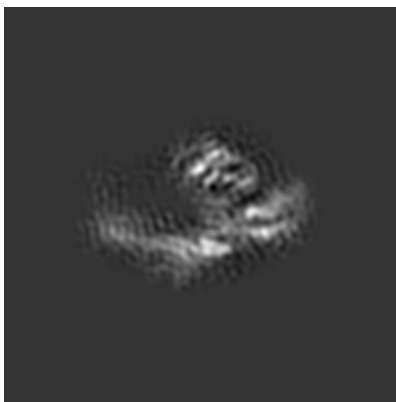
The images above show central slices of the map in three orthogonal directions.

6.3 Largest variance slices [i](#)

6.3.1 Primary map



X Index: 85

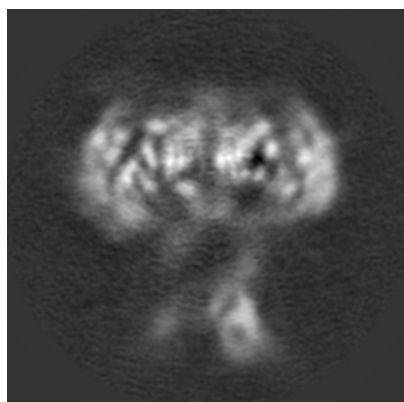


Y Index: 75

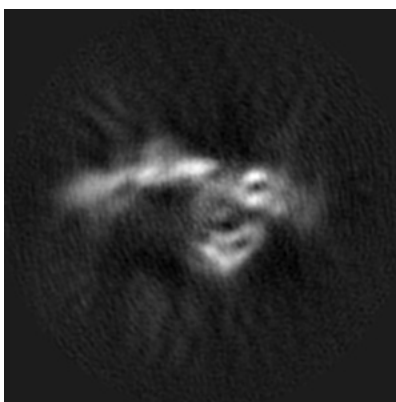


Z Index: 98

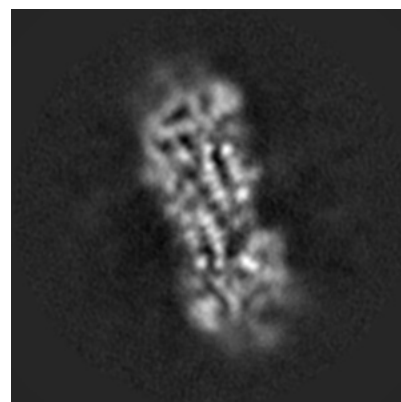
6.3.2 Raw map



X Index: 82



Y Index: 86

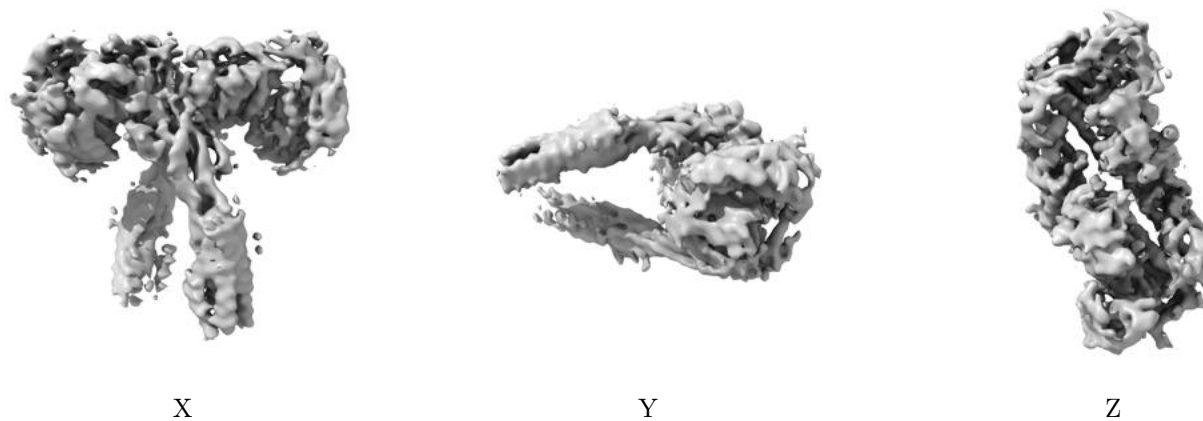


Z Index: 98

The images above show the largest variance slices of the map in three orthogonal directions.

6.4 Orthogonal surface views [i](#)

6.4.1 Primary map



The images above show the 3D surface view of the map at the recommended contour level 0.023. These images, in conjunction with the slice images, may facilitate assessment of whether an appropriate contour level has been provided.

6.4.2 Raw map



These images show the 3D surface of the raw map. The raw map's contour level was selected so that its surface encloses the same volume as the primary map does at its recommended contour level.

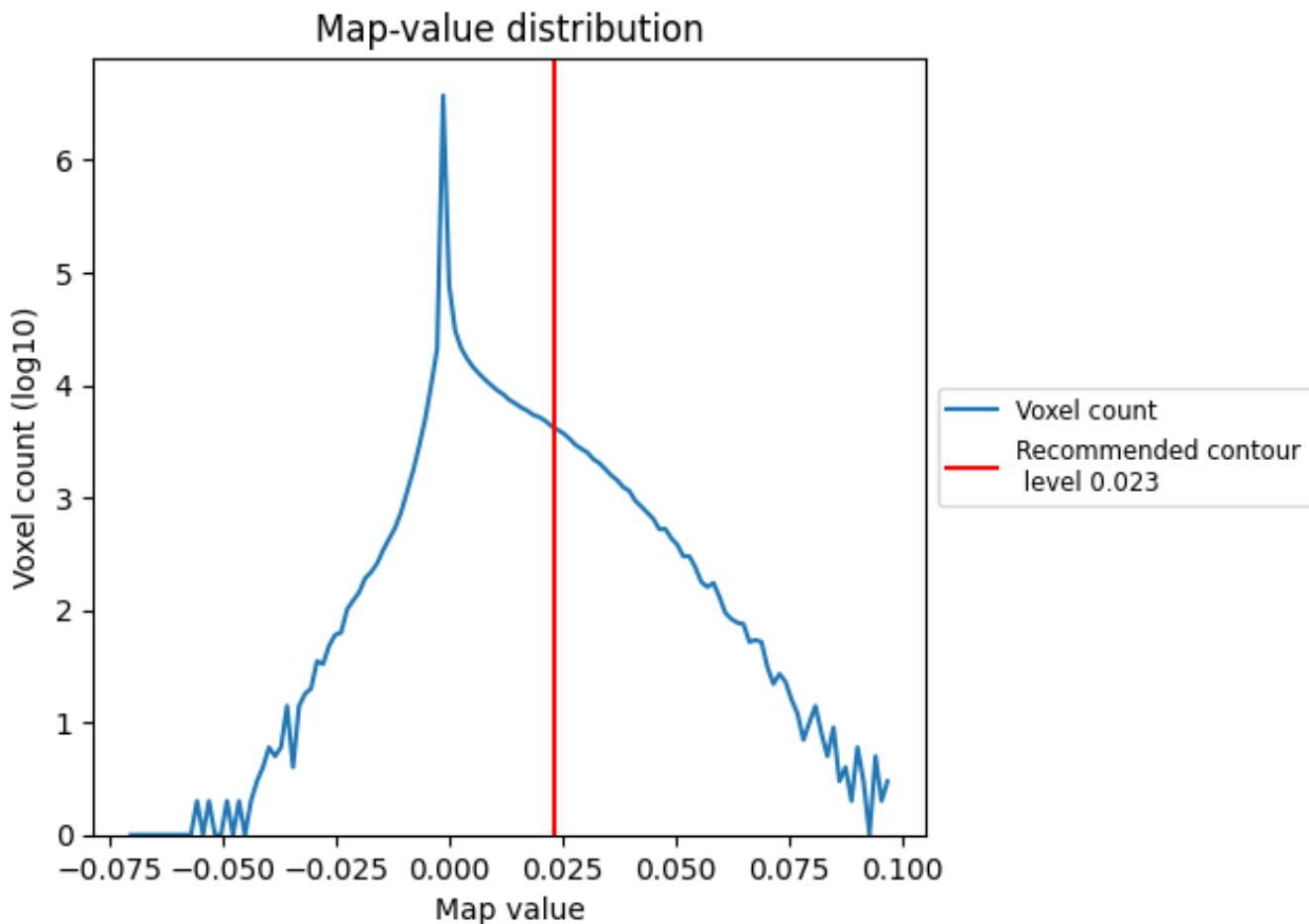
6.5 Mask visualisation [i](#)

This section was not generated. No masks/segmentation were deposited.

7 Map analysis [i](#)

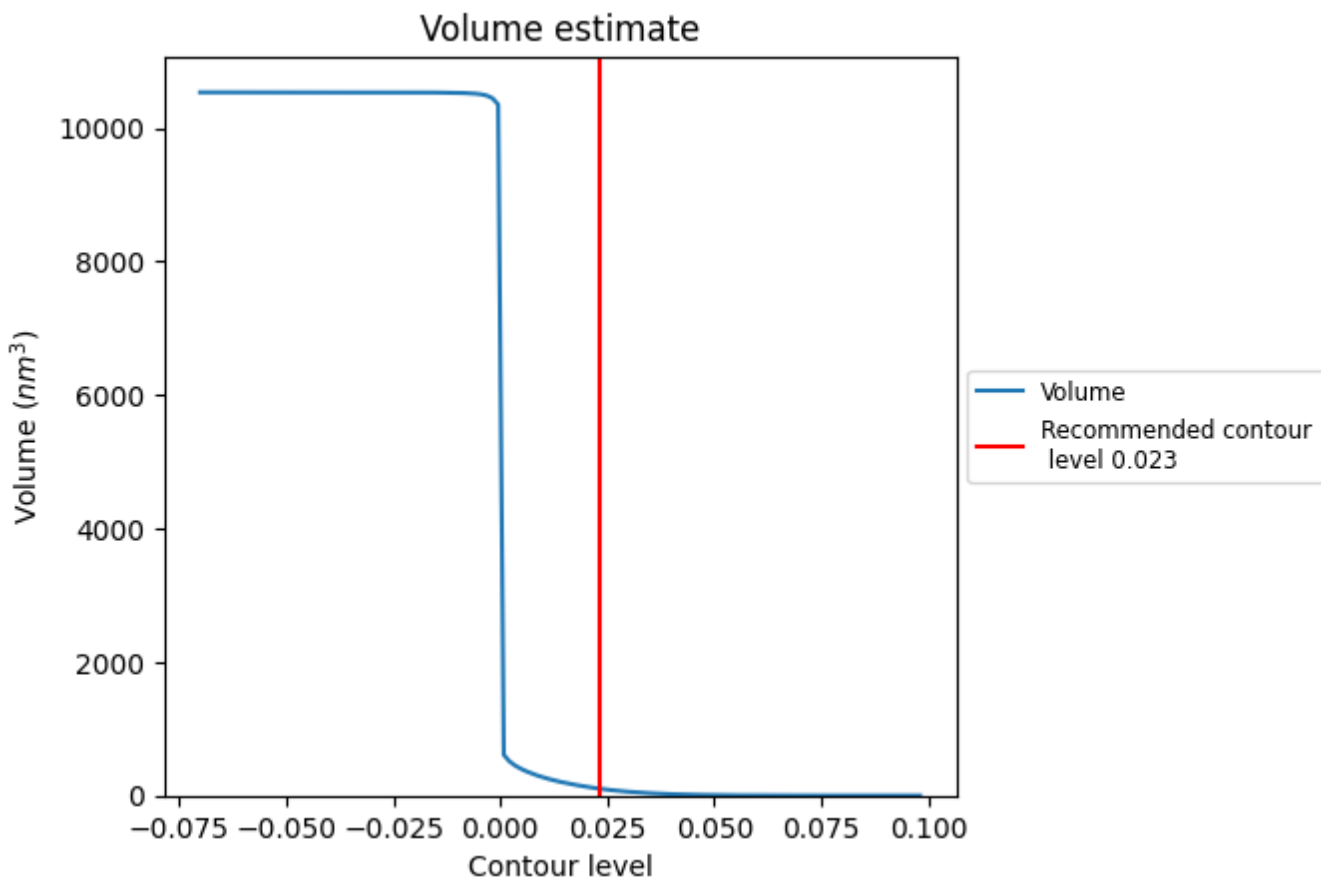
This section contains the results of statistical analysis of the map.

7.1 Map-value distribution [i](#)



The map-value distribution is plotted in 128 intervals along the x-axis. The y-axis is logarithmic. A spike in this graph at zero usually indicates that the volume has been masked.

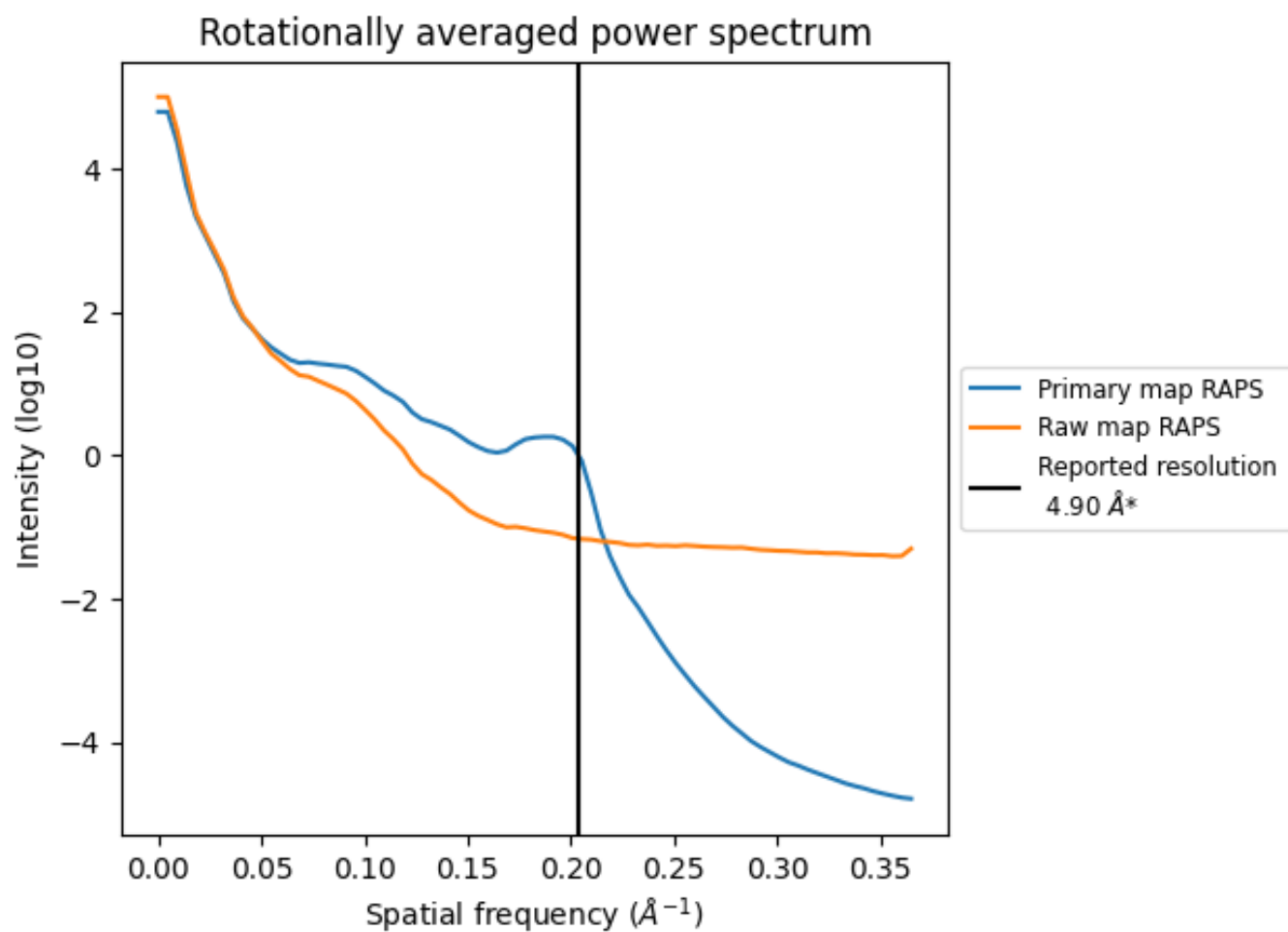
7.2 Volume estimate [i](#)



The volume at the recommended contour level is 105 nm^3 ; this corresponds to an approximate mass of 95 kDa.

The volume estimate graph shows how the enclosed volume varies with the contour level. The recommended contour level is shown as a vertical line and the intersection between the line and the curve gives the volume of the enclosed surface at the given level.

7.3 Rotationally averaged power spectrum i

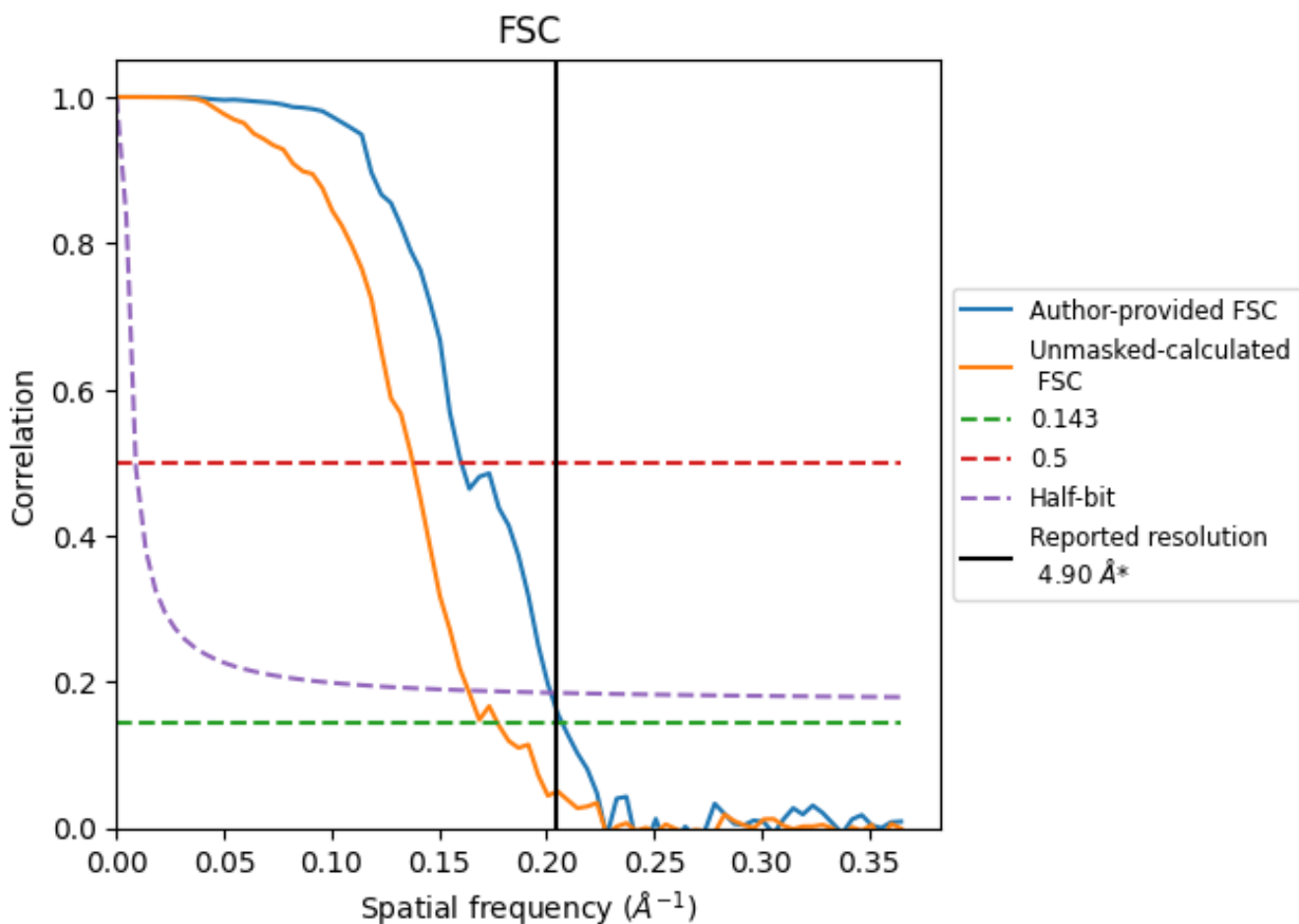


*Reported resolution corresponds to spatial frequency of 0.204 Å⁻¹

8 Fourier-Shell correlation [i](#)

Fourier-Shell Correlation (FSC) is the most commonly used method to estimate the resolution of single-particle and subtomogram-averaged maps. The shape of the curve depends on the imposed symmetry, mask and whether or not the two 3D reconstructions used were processed from a common reference. The reported resolution is shown as a black line. A curve is displayed for the half-bit criterion in addition to lines showing the 0.143 gold standard cut-off and 0.5 cut-off.

8.1 FSC [i](#)



*Reported resolution corresponds to spatial frequency of 0.204 Å⁻¹

8.2 Resolution estimates [i](#)

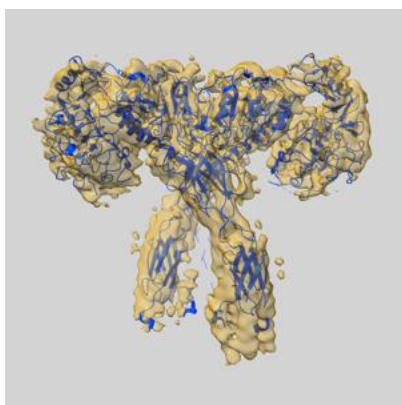
Resolution estimate (Å)	Estimation criterion (FSC cut-off)		
	0.143	0.5	Half-bit
Reported by author	4.90	-	-
Author-provided FSC curve	4.82	6.24	4.95
Unmasked-calculated*	5.64	7.26	6.11

*Resolution estimate based on FSC curve calculated by comparison of deposited half-maps. The value from deposited half-maps intersecting FSC 0.143 CUT-OFF 5.64 differs from the reported value 4.9 by more than 10 %

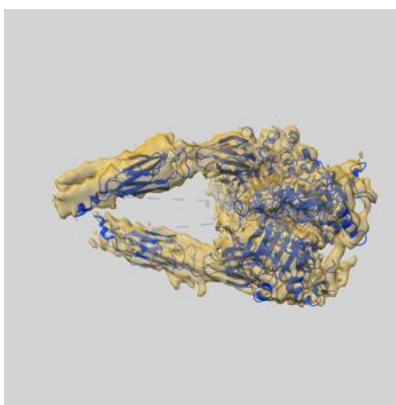
9 Map-model fit [i](#)

This section contains information regarding the fit between EMDB map EMD-30231 and PDB model 7BWA. Per-residue inclusion information can be found in section [3](#) on page [4](#).

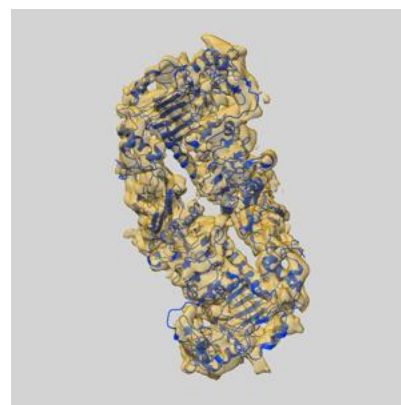
9.1 Map-model overlay [i](#)



X



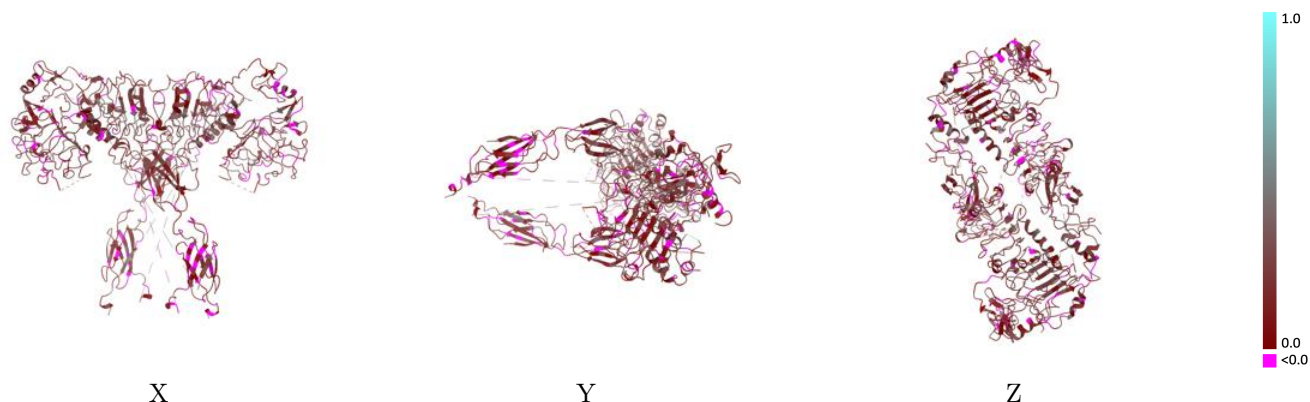
Y



Z

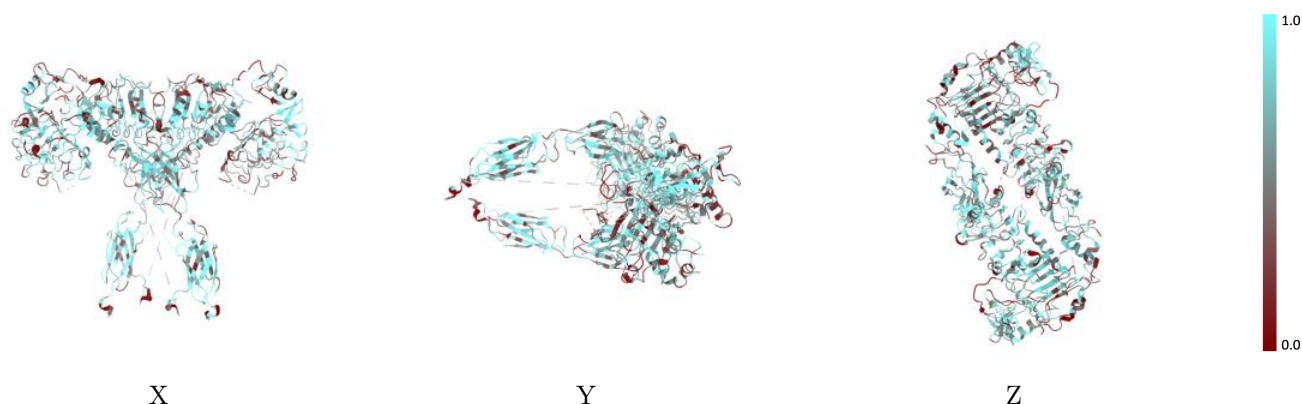
The images above show the 3D surface view of the map at the recommended contour level 0.023 at 50% transparency in yellow overlaid with a ribbon representation of the model coloured in blue. These images allow for the visual assessment of the quality of fit between the atomic model and the map.

9.2 Q-score mapped to coordinate model [i](#)



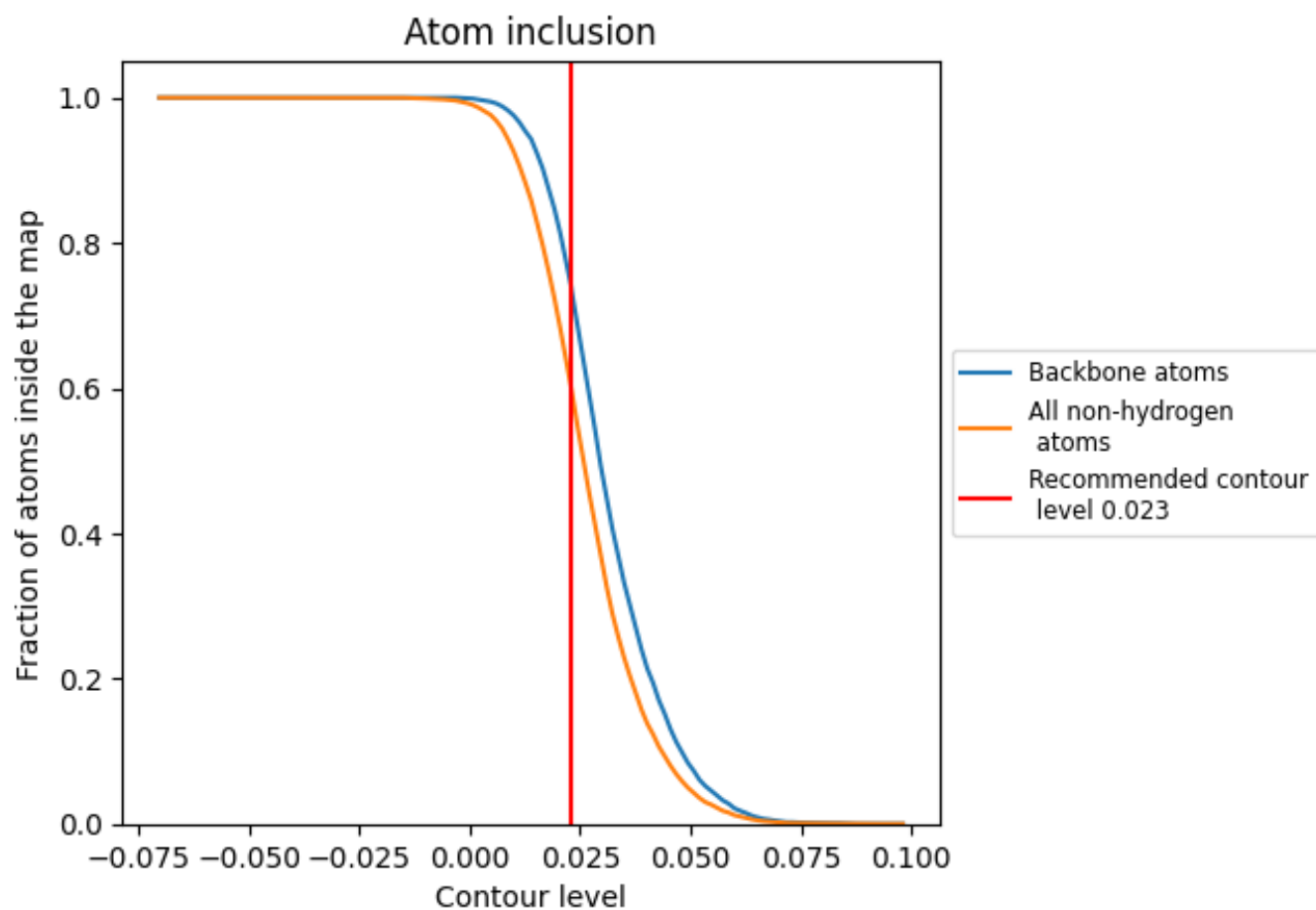
The images above show the model with each residue coloured according its Q-score. This shows their resolvability in the map with higher Q-score values reflecting better resolvability. Please note: Q-score is calculating the resolvability of atoms, and thus high values are only expected at resolutions at which atoms can be resolved. Low Q-score values may therefore be expected for many entries.

9.3 Atom inclusion mapped to coordinate model [i](#)



The images above show the model with each residue coloured according to its atom inclusion. This shows to what extent they are inside the map at the recommended contour level (0.023).











9.4 Atom inclusion [i](#)



At the recommended contour level, 74% of all backbone atoms, 60% of all non-hydrogen atoms, are inside the map.

9.5 Map-model fit summary [i](#)

The table lists the average atom inclusion at the recommended contour level (0.023) and Q-score for the entire model and for each chain.

Chain	Atom inclusion	Q-score
All	 0.6015	 0.1830
A	 0.6177	 0.1890
C	 0.5904	 0.1740
D	 0.6081	 0.2270
E	 0.5216	 0.1820

