



Full wwPDB EM Validation Report ⓘ

Nov 2, 2024 – 03:31 pm GMT

PDB ID : 7PNQ
EMDB ID : EMD-13550
Title : Human coronavirus OC43 spike glycoprotein ectodomain in complex with the 43E6 antibody Fab fragment
Authors : Hurdiss, D.L.
Deposited on : 2021-09-07
Resolution : 3.70 Å (reported)
Based on initial model : 6NZK

This is a Full wwPDB EM Validation Report for a publicly released PDB entry.

We welcome your comments at validation@mail.wwpdb.org

A user guide is available at

<https://www.wwpdb.org/validation/2017/EMValidationReportHelp>

with specific help available everywhere you see the ⓘ symbol.

The types of validation reports are described at

<http://www.wwpdb.org/validation/2017/FAQs#types>.

The following versions of software and data (see [references ⓘ](#)) were used in the production of this report:

EMDB validation analysis : 0.0.1.dev113
Mogul : 1.8.4, CSD as541be (2020)
MolProbity : 4.02b-467
Percentile statistics : 20231227.v01 (using entries in the PDB archive December 27th 2023)
MapQ : 1.9.13
Ideal geometry (proteins) : Engh & Huber (2001)
Ideal geometry (DNA, RNA) : Parkinson et al. (1996)
Validation Pipeline (wwPDB-VP) : 2.39

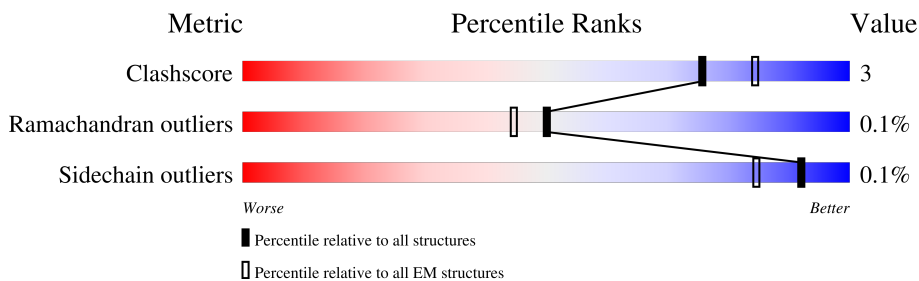
1 Overall quality at a glance i

The following experimental techniques were used to determine the structure:

ELECTRON MICROSCOPY

The reported resolution of this entry is 3.70 Å.

Percentile scores (ranging between 0-100) for global validation metrics of the entry are shown in the following graphic. The table shows the number of entries on which the scores are based.



Metric	Whole archive (#Entries)	EM structures (#Entries)
Clashscore	210492	15764
Ramachandran outliers	207382	16835
Sidechain outliers	206894	16415

The table below summarises the geometric issues observed across the polymeric chains and their fit to the map. The red, orange, yellow and green segments of the bar indicate the fraction of residues that contain outliers for ≥ 3 , 2, 1 and 0 types of geometric quality criteria respectively. A grey segment represents the fraction of residues that are not modelled. The numeric value for each fraction is indicated below the corresponding segment, with a dot representing fractions $\leq 5\%$. The upper red bar (where present) indicates the fraction of residues that have poor fit to the EM map (all-atom inclusion $< 40\%$). The numeric value is given above the bar.

Mol	Chain	Length	Quality of chain
1	D	124	
1	H	124	
1	X	124	
2	F	107	
2	L	107	
2	Y	107	
3	A	1322	
3	B	1322	

Continued on next page...

Continued from previous page...

Mol	Chain	Length	Quality of chain
3	C	1322	 <p>A horizontal bar chart showing the quality distribution of chain C. The bar is divided into four segments: a red segment representing 30%, a green segment representing 82%, a yellow segment representing 7%, and a grey segment representing 11%. The segments are stacked from left to right in the order: red, green, yellow, grey.</p>

2 Entry composition [i](#)

There are 4 unique types of molecules in this entry. The entry contains 32925 atoms, of which 0 are hydrogens and 0 are deuteriums.

In the tables below, the AltConf column contains the number of residues with at least one atom in alternate conformation and the Trace column contains the number of residues modelled with at most 2 atoms.

- Molecule 1 is a protein called 43E6 antibody heavy chain.

Mol	Chain	Residues	Atoms					AltConf	Trace
			Total	C	N	O	S		
1	X	124	953	603	158	189	3	0	0
1	H	124	953	603	158	189	3	0	0
1	D	124	953	603	158	189	3	0	0

- Molecule 2 is a protein called 43E6 antibody light chain.

Mol	Chain	Residues	Atoms					AltConf	Trace
			Total	C	N	O	S		
2	Y	107	802	502	137	160	3	0	0
2	L	107	802	502	137	160	3	0	0
2	F	107	802	502	137	160	3	0	0

- Molecule 3 is a protein called Spike glycoprotein.

Mol	Chain	Residues	Atoms					AltConf	Trace
			Total	C	N	O	S		
3	C	1175	9150	5832	1506	1751	61	0	0
3	A	1175	9150	5832	1506	1751	61	0	0
3	B	1175	9150	5832	1506	1751	61	0	0

There are 228 discrepancies between the modelled and reference sequences:

Chain	Residue	Modelled	Actual	Comment	Reference
C	-9	MET	-	initiating methionine	UNP Q696P8
C	-8	PRO	-	expression tag	UNP Q696P8
C	-7	MET	-	expression tag	UNP Q696P8

Continued on next page...

Continued from previous page...

Chain	Residue	Modelled	Actual	Comment	Reference
C	-6	GLY	-	expression tag	UNP Q696P8
C	-5	SER	-	expression tag	UNP Q696P8
C	-4	LEU	-	expression tag	UNP Q696P8
C	-3	GLN	-	expression tag	UNP Q696P8
C	-2	PRO	-	expression tag	UNP Q696P8
C	-1	LEU	-	expression tag	UNP Q696P8
C	0	ALA	-	expression tag	UNP Q696P8
C	1	THR	-	expression tag	UNP Q696P8
C	2	LEU	-	expression tag	UNP Q696P8
C	3	TYR	-	expression tag	UNP Q696P8
C	4	LEU	-	expression tag	UNP Q696P8
C	5	LEU	-	expression tag	UNP Q696P8
C	6	GLY	-	expression tag	UNP Q696P8
C	7	MET	-	expression tag	UNP Q696P8
C	8	LEU	-	expression tag	UNP Q696P8
C	9	VAL	-	expression tag	UNP Q696P8
C	10	ALA	-	expression tag	UNP Q696P8
C	11	SER	-	expression tag	UNP Q696P8
C	12	VAL	-	expression tag	UNP Q696P8
C	13	LEU	-	expression tag	UNP Q696P8
C	756	GLY	ARG	conflict	UNP Q696P8
C	757	GLY	ARG	conflict	UNP Q696P8
C	759	GLY	ARG	conflict	UNP Q696P8
C	1265	LEU	-	expression tag	UNP Q696P8
C	1266	LEU	-	expression tag	UNP Q696P8
C	1267	ILE	-	expression tag	UNP Q696P8
C	1268	LYS	-	expression tag	UNP Q696P8
C	1269	ARG	-	expression tag	UNP Q696P8
C	1270	MET	-	expression tag	UNP Q696P8
C	1271	LYS	-	expression tag	UNP Q696P8
C	1272	GLN	-	expression tag	UNP Q696P8
C	1273	ILE	-	expression tag	UNP Q696P8
C	1274	GLU	-	expression tag	UNP Q696P8
C	1275	ASP	-	expression tag	UNP Q696P8
C	1276	LYS	-	expression tag	UNP Q696P8
C	1277	ILE	-	expression tag	UNP Q696P8
C	1278	GLU	-	expression tag	UNP Q696P8
C	1279	GLU	-	expression tag	UNP Q696P8
C	1280	ILE	-	expression tag	UNP Q696P8
C	1281	GLU	-	expression tag	UNP Q696P8
C	1282	SER	-	expression tag	UNP Q696P8
C	1283	LYS	-	expression tag	UNP Q696P8

Continued on next page...

Continued from previous page...

Chain	Residue	Modelled	Actual	Comment	Reference
C	1284	GLN	-	expression tag	UNP Q696P8
C	1285	LYS	-	expression tag	UNP Q696P8
C	1286	LYS	-	expression tag	UNP Q696P8
C	1287	ILE	-	expression tag	UNP Q696P8
C	1288	GLU	-	expression tag	UNP Q696P8
C	1289	ASN	-	expression tag	UNP Q696P8
C	1290	GLU	-	expression tag	UNP Q696P8
C	1291	ILE	-	expression tag	UNP Q696P8
C	1292	ALA	-	expression tag	UNP Q696P8
C	1293	ARG	-	expression tag	UNP Q696P8
C	1294	ILE	-	expression tag	UNP Q696P8
C	1295	LYS	-	expression tag	UNP Q696P8
C	1296	LYS	-	expression tag	UNP Q696P8
C	1297	ILE	-	expression tag	UNP Q696P8
C	1298	LYS	-	expression tag	UNP Q696P8
C	1299	LEU	-	expression tag	UNP Q696P8
C	1300	VAL	-	expression tag	UNP Q696P8
C	1301	PRO	-	expression tag	UNP Q696P8
C	1302	ARG	-	expression tag	UNP Q696P8
C	1303	GLY	-	expression tag	UNP Q696P8
C	1304	SER	-	expression tag	UNP Q696P8
C	1305	LEU	-	expression tag	UNP Q696P8
C	1306	GLU	-	expression tag	UNP Q696P8
C	1307	TRP	-	expression tag	UNP Q696P8
C	1308	SER	-	expression tag	UNP Q696P8
C	1309	HIS	-	expression tag	UNP Q696P8
C	1310	PRO	-	expression tag	UNP Q696P8
C	1311	GLN	-	expression tag	UNP Q696P8
C	1312	PHE	-	expression tag	UNP Q696P8
C	1313	GLU	-	expression tag	UNP Q696P8
C	1314	LYS	-	expression tag	UNP Q696P8
A	-9	MET	-	initiating methionine	UNP Q696P8
A	-8	PRO	-	expression tag	UNP Q696P8
A	-7	MET	-	expression tag	UNP Q696P8
A	-6	GLY	-	expression tag	UNP Q696P8
A	-5	SER	-	expression tag	UNP Q696P8
A	-4	LEU	-	expression tag	UNP Q696P8
A	-3	GLN	-	expression tag	UNP Q696P8
A	-2	PRO	-	expression tag	UNP Q696P8
A	-1	LEU	-	expression tag	UNP Q696P8
A	0	ALA	-	expression tag	UNP Q696P8
A	1	THR	-	expression tag	UNP Q696P8

Continued on next page...

Continued from previous page...

Chain	Residue	Modelled	Actual	Comment	Reference
A	2	LEU	-	expression tag	UNP Q696P8
A	3	TYR	-	expression tag	UNP Q696P8
A	4	LEU	-	expression tag	UNP Q696P8
A	5	LEU	-	expression tag	UNP Q696P8
A	6	GLY	-	expression tag	UNP Q696P8
A	7	MET	-	expression tag	UNP Q696P8
A	8	LEU	-	expression tag	UNP Q696P8
A	9	VAL	-	expression tag	UNP Q696P8
A	10	ALA	-	expression tag	UNP Q696P8
A	11	SER	-	expression tag	UNP Q696P8
A	12	VAL	-	expression tag	UNP Q696P8
A	13	LEU	-	expression tag	UNP Q696P8
A	756	GLY	ARG	conflict	UNP Q696P8
A	757	GLY	ARG	conflict	UNP Q696P8
A	759	GLY	ARG	conflict	UNP Q696P8
A	1265	LEU	-	expression tag	UNP Q696P8
A	1266	LEU	-	expression tag	UNP Q696P8
A	1267	ILE	-	expression tag	UNP Q696P8
A	1268	LYS	-	expression tag	UNP Q696P8
A	1269	ARG	-	expression tag	UNP Q696P8
A	1270	MET	-	expression tag	UNP Q696P8
A	1271	LYS	-	expression tag	UNP Q696P8
A	1272	GLN	-	expression tag	UNP Q696P8
A	1273	ILE	-	expression tag	UNP Q696P8
A	1274	GLU	-	expression tag	UNP Q696P8
A	1275	ASP	-	expression tag	UNP Q696P8
A	1276	LYS	-	expression tag	UNP Q696P8
A	1277	ILE	-	expression tag	UNP Q696P8
A	1278	GLU	-	expression tag	UNP Q696P8
A	1279	GLU	-	expression tag	UNP Q696P8
A	1280	ILE	-	expression tag	UNP Q696P8
A	1281	GLU	-	expression tag	UNP Q696P8
A	1282	SER	-	expression tag	UNP Q696P8
A	1283	LYS	-	expression tag	UNP Q696P8
A	1284	GLN	-	expression tag	UNP Q696P8
A	1285	LYS	-	expression tag	UNP Q696P8
A	1286	LYS	-	expression tag	UNP Q696P8
A	1287	ILE	-	expression tag	UNP Q696P8
A	1288	GLU	-	expression tag	UNP Q696P8
A	1289	ASN	-	expression tag	UNP Q696P8
A	1290	GLU	-	expression tag	UNP Q696P8
A	1291	ILE	-	expression tag	UNP Q696P8

Continued on next page...

Continued from previous page...

Chain	Residue	Modelled	Actual	Comment	Reference
A	1292	ALA	-	expression tag	UNP Q696P8
A	1293	ARG	-	expression tag	UNP Q696P8
A	1294	ILE	-	expression tag	UNP Q696P8
A	1295	LYS	-	expression tag	UNP Q696P8
A	1296	LYS	-	expression tag	UNP Q696P8
A	1297	ILE	-	expression tag	UNP Q696P8
A	1298	LYS	-	expression tag	UNP Q696P8
A	1299	LEU	-	expression tag	UNP Q696P8
A	1300	VAL	-	expression tag	UNP Q696P8
A	1301	PRO	-	expression tag	UNP Q696P8
A	1302	ARG	-	expression tag	UNP Q696P8
A	1303	GLY	-	expression tag	UNP Q696P8
A	1304	SER	-	expression tag	UNP Q696P8
A	1305	LEU	-	expression tag	UNP Q696P8
A	1306	GLU	-	expression tag	UNP Q696P8
A	1307	TRP	-	expression tag	UNP Q696P8
A	1308	SER	-	expression tag	UNP Q696P8
A	1309	HIS	-	expression tag	UNP Q696P8
A	1310	PRO	-	expression tag	UNP Q696P8
A	1311	GLN	-	expression tag	UNP Q696P8
A	1312	PHE	-	expression tag	UNP Q696P8
A	1313	GLU	-	expression tag	UNP Q696P8
A	1314	LYS	-	expression tag	UNP Q696P8
B	-9	MET	-	initiating methionine	UNP Q696P8
B	-8	PRO	-	expression tag	UNP Q696P8
B	-7	MET	-	expression tag	UNP Q696P8
B	-6	GLY	-	expression tag	UNP Q696P8
B	-5	SER	-	expression tag	UNP Q696P8
B	-4	LEU	-	expression tag	UNP Q696P8
B	-3	GLN	-	expression tag	UNP Q696P8
B	-2	PRO	-	expression tag	UNP Q696P8
B	-1	LEU	-	expression tag	UNP Q696P8
B	0	ALA	-	expression tag	UNP Q696P8
B	1	THR	-	expression tag	UNP Q696P8
B	2	LEU	-	expression tag	UNP Q696P8
B	3	TYR	-	expression tag	UNP Q696P8
B	4	LEU	-	expression tag	UNP Q696P8
B	5	LEU	-	expression tag	UNP Q696P8
B	6	GLY	-	expression tag	UNP Q696P8
B	7	MET	-	expression tag	UNP Q696P8
B	8	LEU	-	expression tag	UNP Q696P8
B	9	VAL	-	expression tag	UNP Q696P8

Continued on next page...

Continued from previous page...

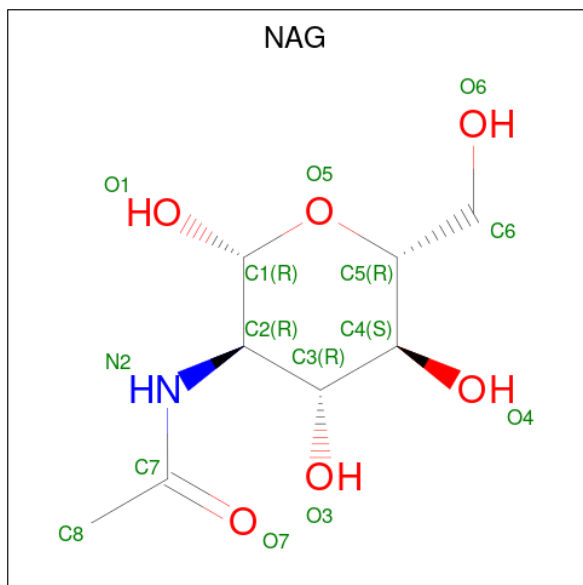
Chain	Residue	Modelled	Actual	Comment	Reference
B	10	ALA	-	expression tag	UNP Q696P8
B	11	SER	-	expression tag	UNP Q696P8
B	12	VAL	-	expression tag	UNP Q696P8
B	13	LEU	-	expression tag	UNP Q696P8
B	756	GLY	ARG	conflict	UNP Q696P8
B	757	GLY	ARG	conflict	UNP Q696P8
B	759	GLY	ARG	conflict	UNP Q696P8
B	1265	LEU	-	expression tag	UNP Q696P8
B	1266	LEU	-	expression tag	UNP Q696P8
B	1267	ILE	-	expression tag	UNP Q696P8
B	1268	LYS	-	expression tag	UNP Q696P8
B	1269	ARG	-	expression tag	UNP Q696P8
B	1270	MET	-	expression tag	UNP Q696P8
B	1271	LYS	-	expression tag	UNP Q696P8
B	1272	GLN	-	expression tag	UNP Q696P8
B	1273	ILE	-	expression tag	UNP Q696P8
B	1274	GLU	-	expression tag	UNP Q696P8
B	1275	ASP	-	expression tag	UNP Q696P8
B	1276	LYS	-	expression tag	UNP Q696P8
B	1277	ILE	-	expression tag	UNP Q696P8
B	1278	GLU	-	expression tag	UNP Q696P8
B	1279	GLU	-	expression tag	UNP Q696P8
B	1280	ILE	-	expression tag	UNP Q696P8
B	1281	GLU	-	expression tag	UNP Q696P8
B	1282	SER	-	expression tag	UNP Q696P8
B	1283	LYS	-	expression tag	UNP Q696P8
B	1284	GLN	-	expression tag	UNP Q696P8
B	1285	LYS	-	expression tag	UNP Q696P8
B	1286	LYS	-	expression tag	UNP Q696P8
B	1287	ILE	-	expression tag	UNP Q696P8
B	1288	GLU	-	expression tag	UNP Q696P8
B	1289	ASN	-	expression tag	UNP Q696P8
B	1290	GLU	-	expression tag	UNP Q696P8
B	1291	ILE	-	expression tag	UNP Q696P8
B	1292	ALA	-	expression tag	UNP Q696P8
B	1293	ARG	-	expression tag	UNP Q696P8
B	1294	ILE	-	expression tag	UNP Q696P8
B	1295	LYS	-	expression tag	UNP Q696P8
B	1296	LYS	-	expression tag	UNP Q696P8
B	1297	ILE	-	expression tag	UNP Q696P8
B	1298	LYS	-	expression tag	UNP Q696P8
B	1299	LEU	-	expression tag	UNP Q696P8

Continued on next page...

Continued from previous page...

Chain	Residue	Modelled	Actual	Comment	Reference
B	1300	VAL	-	expression tag	UNP Q696P8
B	1301	PRO	-	expression tag	UNP Q696P8
B	1302	ARG	-	expression tag	UNP Q696P8
B	1303	GLY	-	expression tag	UNP Q696P8
B	1304	SER	-	expression tag	UNP Q696P8
B	1305	LEU	-	expression tag	UNP Q696P8
B	1306	GLU	-	expression tag	UNP Q696P8
B	1307	TRP	-	expression tag	UNP Q696P8
B	1308	SER	-	expression tag	UNP Q696P8
B	1309	HIS	-	expression tag	UNP Q696P8
B	1310	PRO	-	expression tag	UNP Q696P8
B	1311	GLN	-	expression tag	UNP Q696P8
B	1312	PHE	-	expression tag	UNP Q696P8
B	1313	GLU	-	expression tag	UNP Q696P8
B	1314	LYS	-	expression tag	UNP Q696P8

- Molecule 4 is 2-acetamido-2-deoxy-beta-D-glucopyranose (three-letter code: NAG) (formula: $C_8H_{15}NO_6$).



Mol	Chain	Residues	Atoms				AltConf
4	C	1	Total	C	N	O	0
			14	8	1	5	
4	C	1	Total	C	N	O	0
			14	8	1	5	
4	C	1	Total	C	N	O	0
			14	8	1	5	

Continued on next page...

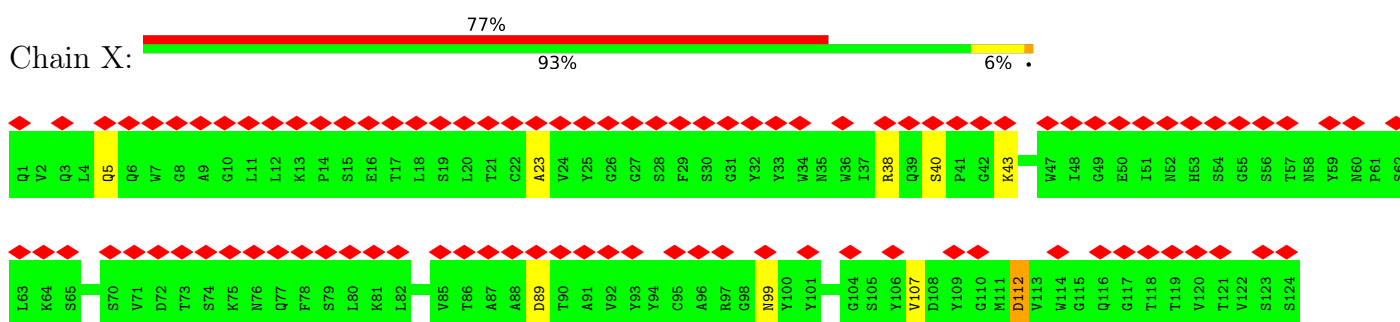
Continued from previous page...

Mol	Chain	Residues	Atoms				AltConf
			Total	C	N	O	
4	C	1	Total 14	8	1	5	0
4	C	1	Total 14	8	1	5	0
4	A	1	Total 14	8	1	5	0
4	A	1	Total 14	8	1	5	0
4	A	1	Total 14	8	1	5	0
4	A	1	Total 14	8	1	5	0
4	A	1	Total 14	8	1	5	0
4	A	1	Total 14	8	1	5	0
4	B	1	Total 14	8	1	5	0
4	B	1	Total 14	8	1	5	0
4	B	1	Total 14	8	1	5	0
4	B	1	Total 14	8	1	5	0
4	B	1	Total 14	8	1	5	0

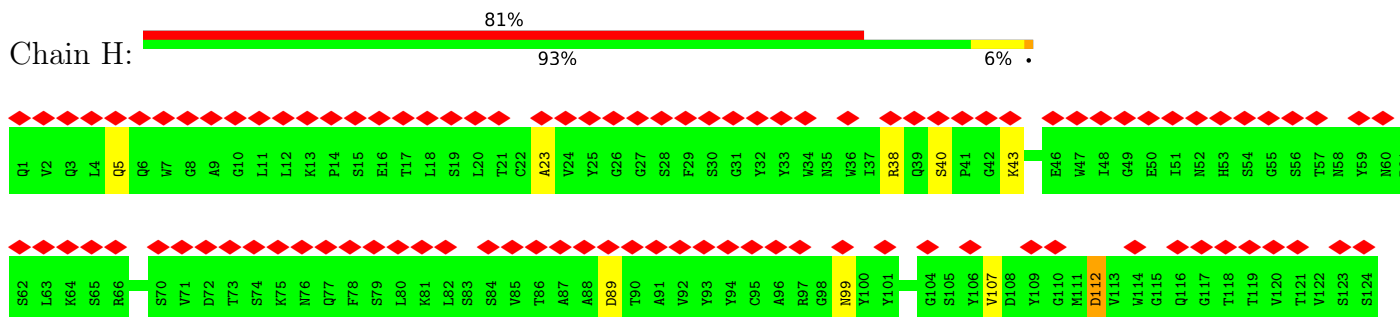
3 Residue-property plots

These plots are drawn for all protein, RNA, DNA and oligosaccharide chains in the entry. The first graphic for a chain summarises the proportions of the various outlier classes displayed in the second graphic. The second graphic shows the sequence view annotated by issues in geometry and atom inclusion in map density. Residues are color-coded according to the number of geometric quality criteria for which they contain at least one outlier: green = 0, yellow = 1, orange = 2 and red = 3 or more. A red diamond above a residue indicates a poor fit to the EM map for this residue (all-atom inclusion < 40%). Stretches of 2 or more consecutive residues without any outlier are shown as a green connector. Residues present in the sample, but not in the model, are shown in grey.

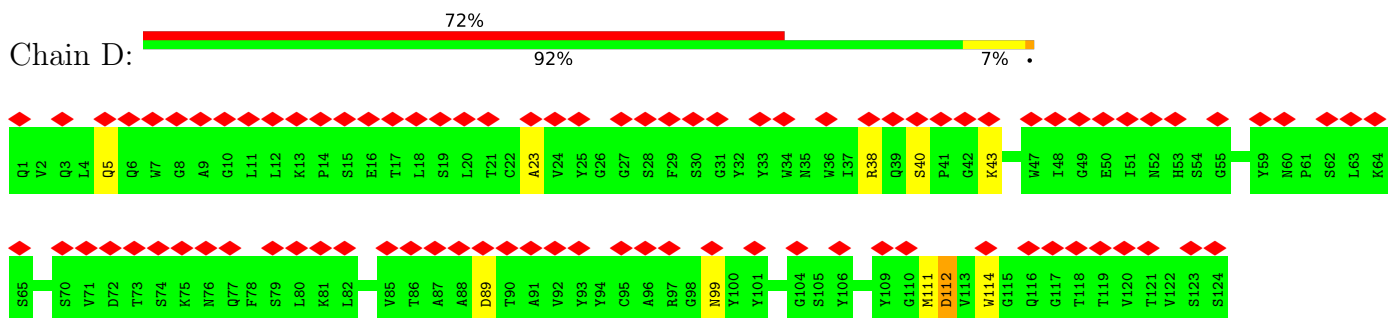
- Molecule 1: 43E6 antibody heavy chain



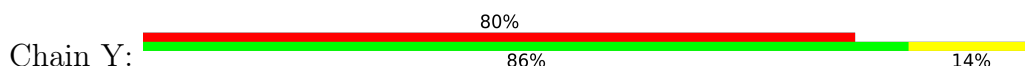
- Molecule 1: 43E6 antibody heavy chain

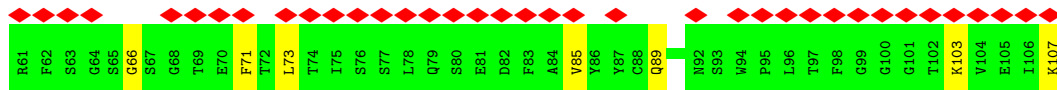
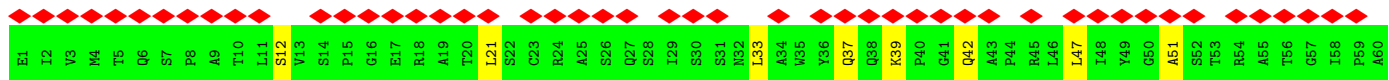


- Molecule 1: 43E6 antibody heavy chain



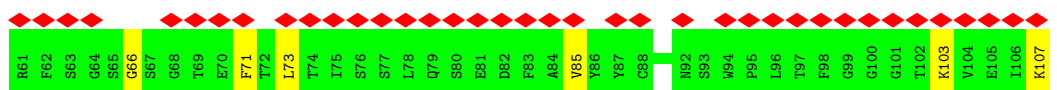
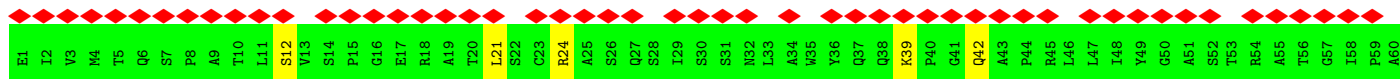
- Molecule 2: 43E6 antibody light chain





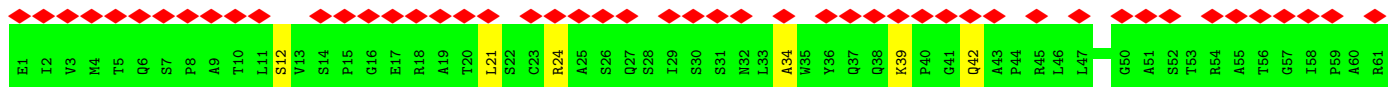
• Molecule 2: 43E6 antibody light chain

Chain L:



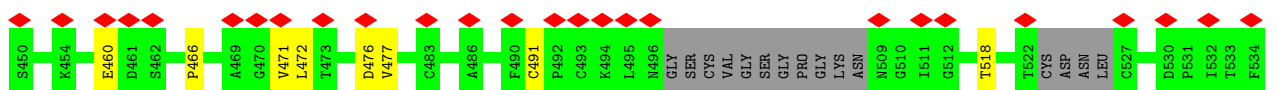
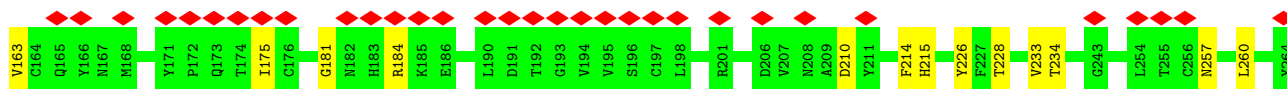
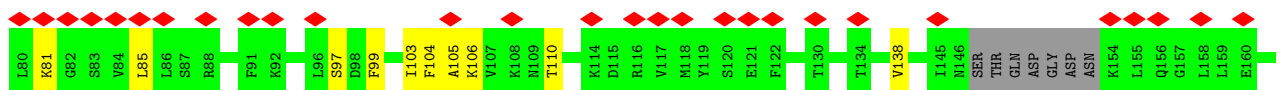
• Molecule 2: 43E6 antibody light chain

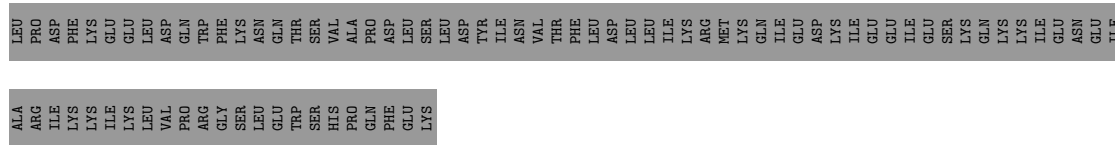
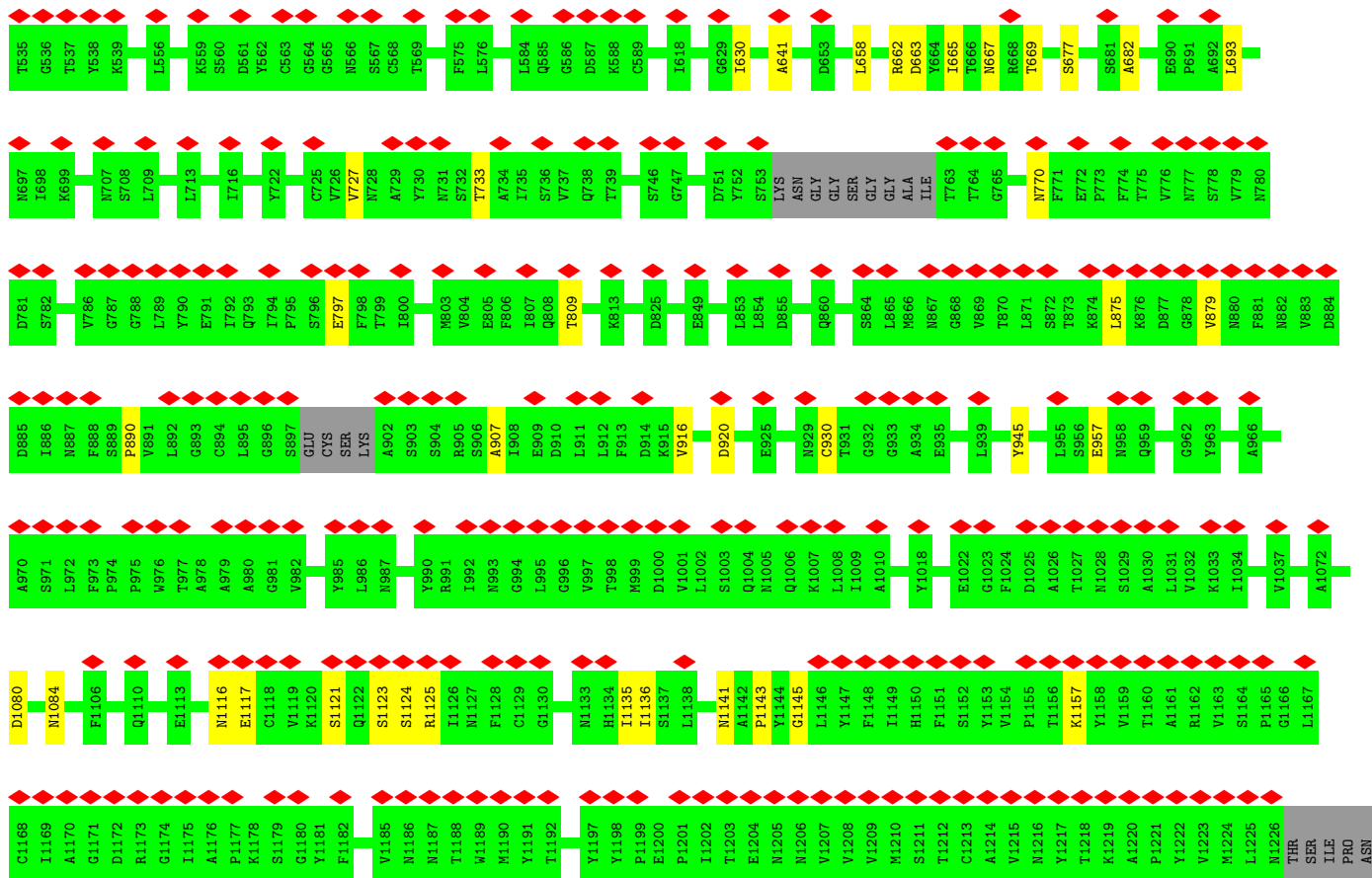
Chain F:



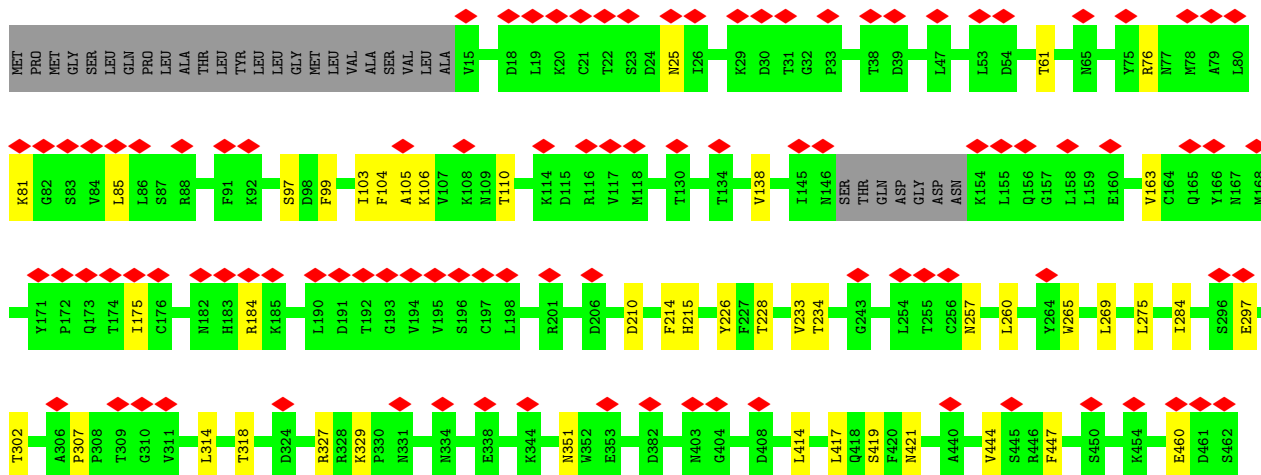
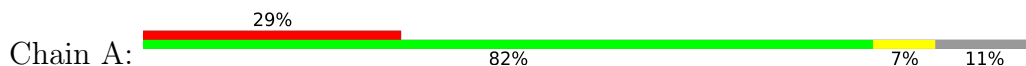
• Molecule 3: Spike glycoprotein

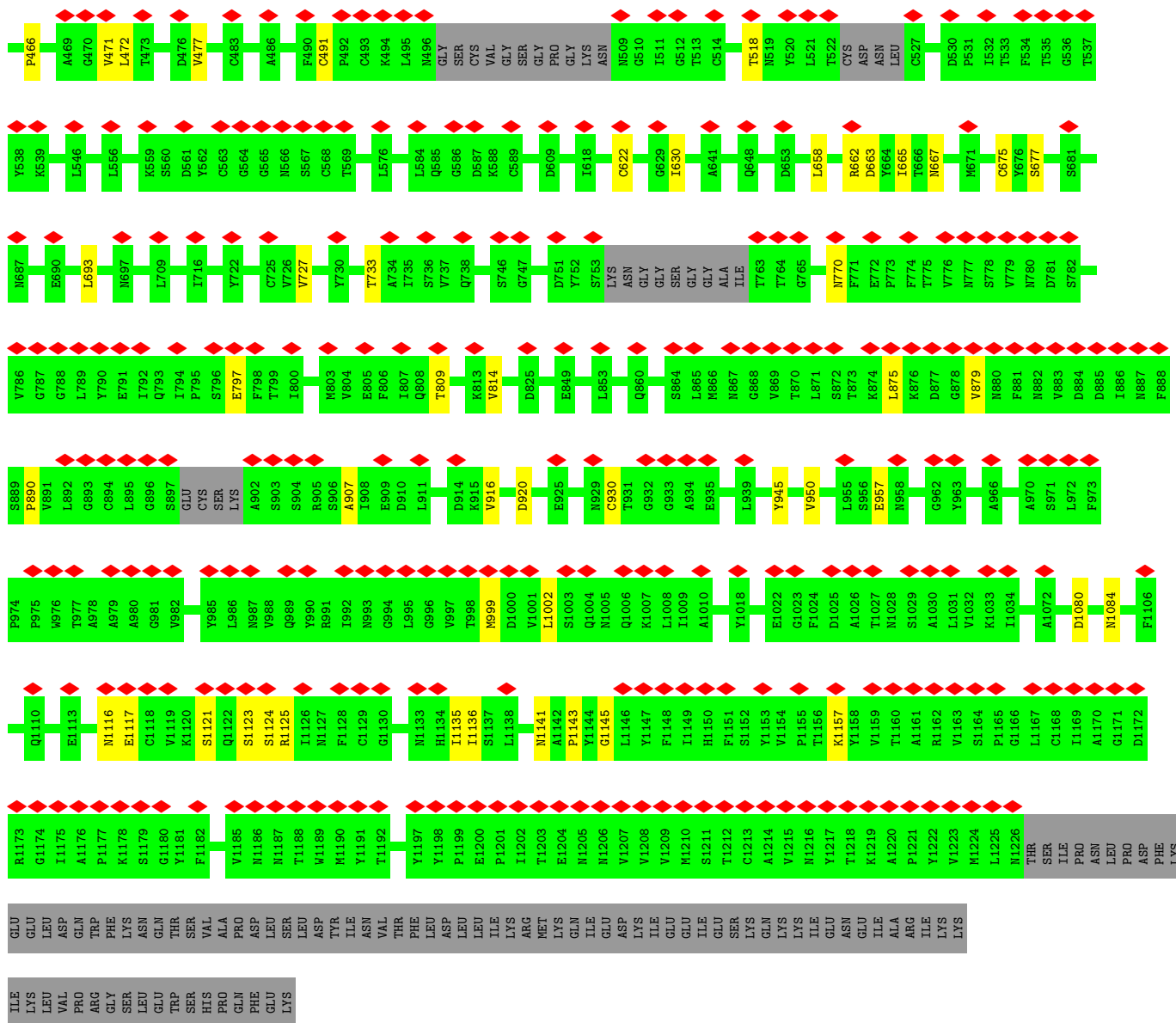
Chain C:



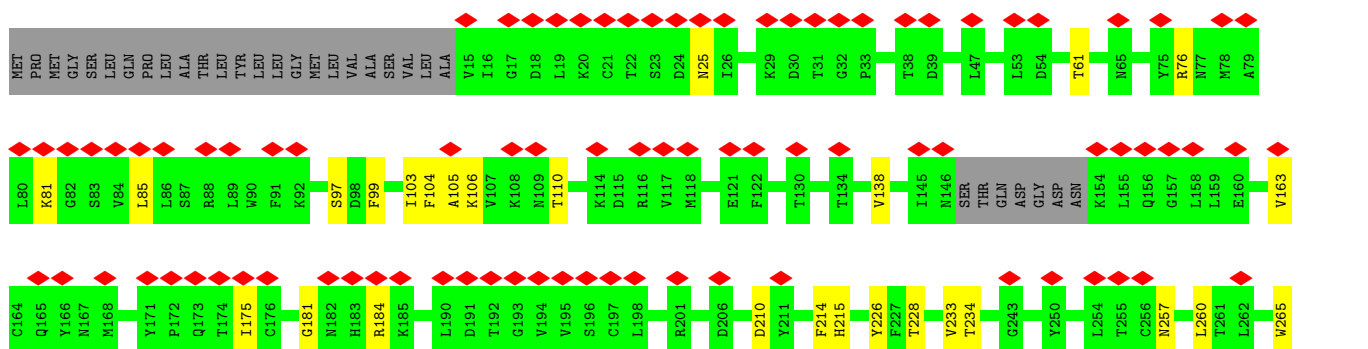
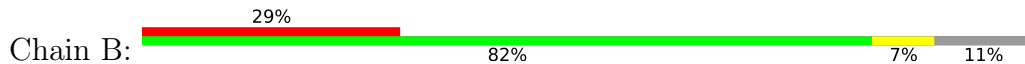


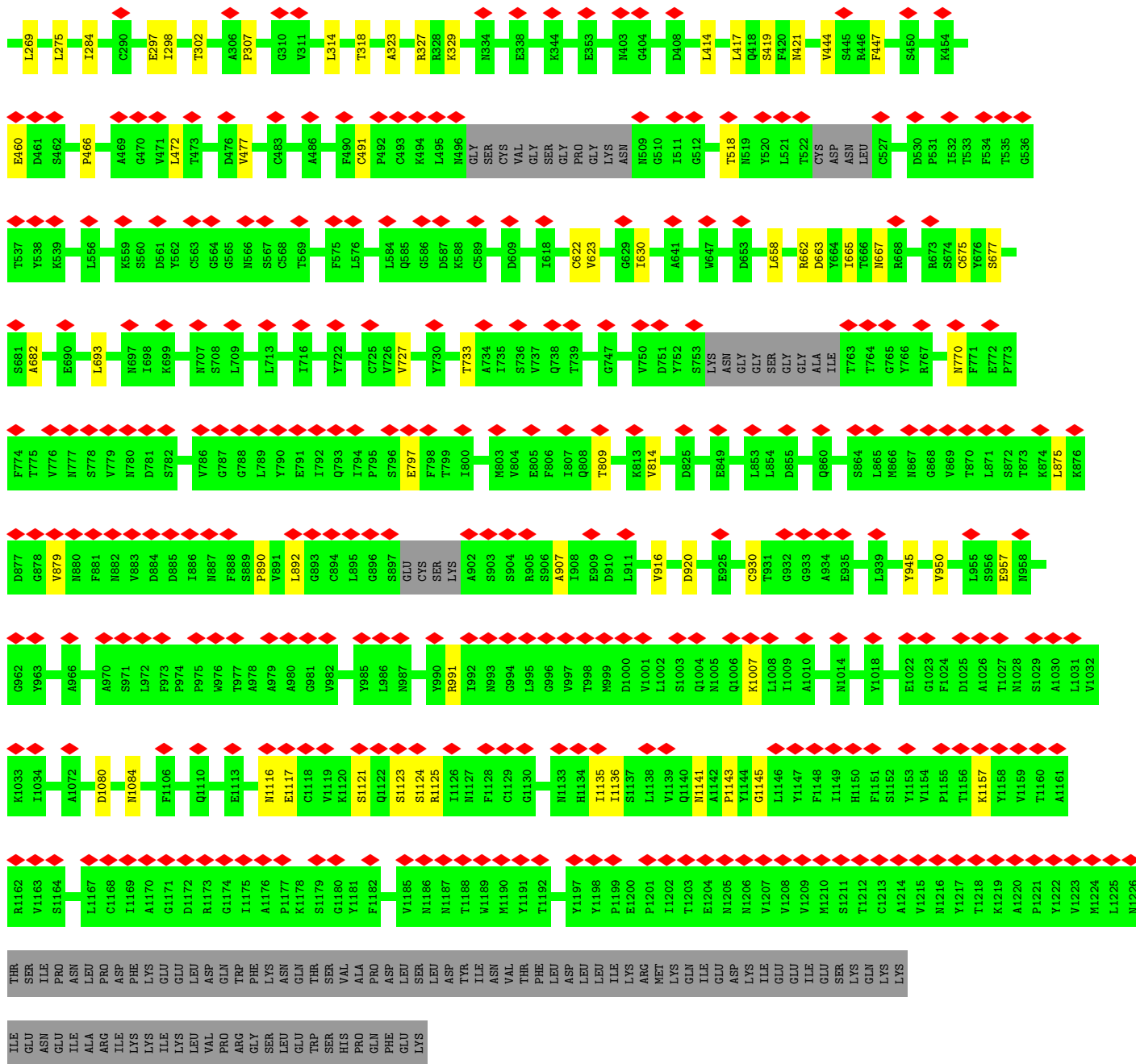
● Molecule 3: Spike glycoprotein





● Molecule 3: Spike glycoprotein





4 Experimental information

Property	Value	Source
EM reconstruction method	SINGLE PARTICLE	Depositor
Imposed symmetry	POINT, C3	Depositor
Number of particles used	53157	Depositor
Resolution determination method	FSC 0.143 CUT-OFF	Depositor
CTF correction method	PHASE FLIPPING AND AMPLITUDE CORRECTION	Depositor
Microscope	TFS KRIOS	Depositor
Voltage (kV)	300	Depositor
Electron dose ($e^-/\text{\AA}^2$)	52	Depositor
Minimum defocus (nm)	800	Depositor
Maximum defocus (nm)	2600	Depositor
Magnification	75000	Depositor
Image detector	FEI FALCON III (4k x 4k)	Depositor
Maximum map value	2.059	Depositor
Minimum map value	-0.002	Depositor
Average map value	0.002	Depositor
Map value standard deviation	0.034	Depositor
Recommended contour level	0.2	Depositor
Map size (Å)	340.80002, 340.80002, 340.80002	wwPDB
Map dimensions	320, 320, 320	wwPDB
Map angles (°)	90.0, 90.0, 90.0	wwPDB
Pixel spacing (Å)	1.065, 1.065, 1.065	Depositor

5 Model quality [i](#)

5.1 Standard geometry [i](#)

Bond lengths and bond angles in the following residue types are not validated in this section: NAG

The Z score for a bond length (or angle) is the number of standard deviations the observed value is removed from the expected value. A bond length (or angle) with $|Z| > 5$ is considered an outlier worth inspection. RMSZ is the root-mean-square of all Z scores of the bond lengths (or angles).

Mol	Chain	Bond lengths		Bond angles	
		RMSZ	# Z >5	RMSZ	# Z >5
1	D	0.25	0/978	0.51	0/1332
1	H	0.25	0/978	0.51	0/1332
1	X	0.25	0/978	0.50	0/1332
2	F	0.25	0/819	0.53	0/1112
2	L	0.26	0/819	0.52	0/1112
2	Y	0.26	0/819	0.52	0/1112
3	A	0.27	0/9359	0.51	0/12744
3	B	0.27	0/9359	0.51	0/12744
3	C	0.27	0/9359	0.51	0/12744
All	All	0.27	0/33468	0.51	0/45564

There are no bond length outliers.

There are no bond angle outliers.

There are no chirality outliers.

There are no planarity outliers.

5.2 Too-close contacts [i](#)

In the following table, the Non-H and H(model) columns list the number of non-hydrogen atoms and hydrogen atoms in the chain respectively. The H(added) column lists the number of hydrogen atoms added and optimized by MolProbity. The Clashes column lists the number of clashes within the asymmetric unit, whereas Symm-Clashes lists symmetry-related clashes.

Mol	Chain	Non-H	H(model)	H(added)	Clashes	Symm-Clashes
1	D	953	0	903	5	0
1	H	953	0	903	5	0
1	X	953	0	903	5	0
2	F	802	0	787	7	0

Continued on next page...

Continued from previous page...

Mol	Chain	Non-H	H(model)	H(added)	Clashes	Symm-Clashes
2	L	802	0	787	6	0
2	Y	802	0	787	8	0
3	A	9150	0	8857	53	0
3	B	9150	0	8857	56	0
3	C	9150	0	8858	50	0
4	A	70	0	65	0	0
4	B	70	0	65	0	0
4	C	70	0	65	0	0
All	All	32925	0	31837	190	0

The all-atom clashscore is defined as the number of clashes found per 1000 atoms (including hydrogen atoms). The all-atom clashscore for this structure is 3.

All (190) close contacts within the same asymmetric unit are listed below, sorted by their clash magnitude.

Atom-1	Atom-2	Interatomic distance (Å)	Clash overlap (Å)
3:A:215:HIS:HB2	3:A:226:TYR:HB2	1.75	0.68
3:B:693:LEU:HB2	3:B:727:VAL:HB	1.84	0.59
3:A:693:LEU:HB2	3:A:727:VAL:HB	1.84	0.59
3:C:1135:ILE:HG22	3:C:1136:ILE:HG12	1.85	0.59
3:B:1135:ILE:HG22	3:B:1136:ILE:HG12	1.84	0.59
3:C:215:HIS:HB2	3:C:226:TYR:HB2	1.85	0.58
3:C:693:LEU:HB2	3:C:727:VAL:HB	1.87	0.57
3:A:302:THR:HG21	3:A:307:PRO:HB3	1.86	0.57
3:B:302:THR:HG21	3:B:307:PRO:HB3	1.86	0.57
3:B:797:GLU:HB2	3:B:1157:LYS:HB2	1.87	0.57
3:A:1135:ILE:HG22	3:A:1136:ILE:HG12	1.85	0.57
3:A:797:GLU:HB2	3:A:1157:LYS:HB2	1.87	0.57
3:C:797:GLU:HB2	3:C:1157:LYS:HB2	1.87	0.56
3:B:233:VAL:HG11	3:B:284:ILE:HB	1.87	0.56
3:B:733:THR:O	3:B:770:ASN:ND2	2.39	0.56
3:C:228:THR:HB	3:C:234:THR:HA	1.88	0.56
3:C:302:THR:HG21	3:C:307:PRO:HB3	1.87	0.56
3:B:228:THR:HB	3:B:234:THR:HA	1.87	0.56
3:A:733:THR:O	3:A:770:ASN:ND2	2.39	0.55
3:B:138:VAL:HG13	3:B:163:VAL:HG22	1.88	0.55
3:C:733:THR:O	3:C:770:ASN:ND2	2.39	0.55
3:A:81:LYS:HE3	3:A:260:LEU:H	1.71	0.55
2:Y:39:LYS:HB2	2:Y:42:GLN:HB2	1.89	0.55
3:B:215:HIS:HB2	3:B:226:TYR:HB2	1.89	0.55
3:A:1125:ARG:NH2	3:B:1117:GLU:OE2	2.37	0.55

Continued on next page...

Continued from previous page...

Atom-1	Atom-2	Interatomic distance (Å)	Clash overlap (Å)
3:A:138:VAL:HG13	3:A:163:VAL:HG22	1.89	0.54
3:A:138:VAL:HG22	3:A:163:VAL:HG13	1.89	0.54
3:B:138:VAL:HG22	3:B:163:VAL:HG13	1.89	0.54
3:A:233:VAL:HG11	3:A:284:ILE:HB	1.88	0.54
2:L:39:LYS:HB2	2:L:42:GLN:HB2	1.89	0.54
2:L:66:GLY:HA3	2:L:71:PHE:HA	1.90	0.54
3:C:916:VAL:HG11	3:C:1143:PRO:HG2	1.88	0.54
3:A:228:THR:HB	3:A:234:THR:HA	1.90	0.54
3:B:81:LYS:HE3	3:B:260:LEU:H	1.73	0.54
3:C:233:VAL:HG11	3:C:284:ILE:HB	1.88	0.54
3:B:447:PHE:HA	3:B:460:GLU:HG2	1.90	0.54
3:A:916:VAL:HG11	3:A:1143:PRO:HG2	1.89	0.54
2:F:39:LYS:HB2	2:F:42:GLN:HB2	1.89	0.54
3:C:138:VAL:HG22	3:C:163:VAL:HG13	1.89	0.53
3:C:81:LYS:HE3	3:C:260:LEU:H	1.72	0.53
3:B:916:VAL:HG11	3:B:1143:PRO:HG2	1.89	0.53
3:C:447:PHE:HA	3:C:460:GLU:HG2	1.90	0.53
3:C:138:VAL:HG13	3:C:163:VAL:HG22	1.89	0.53
3:C:1117:GLU:OE2	3:B:1125:ARG:NH2	2.37	0.52
3:A:447:PHE:HA	3:A:460:GLU:HG2	1.91	0.52
3:A:329:LYS:HG3	3:A:665:ILE:HD11	1.92	0.52
1:D:99:ASN:HB2	1:D:112:ASP:HB2	1.90	0.52
2:Y:66:GLY:HA3	2:Y:71:PHE:HA	1.92	0.52
3:C:210:ASP:OD1	3:C:210:ASP:N	2.41	0.52
3:A:814:VAL:HG22	3:A:950:VAL:HG22	1.92	0.51
3:A:106:LYS:HB3	3:A:265:TRP:HB2	1.93	0.51
3:A:890:PRO:HA	3:A:907:ALA:HB3	1.92	0.51
2:F:34:ALA:HB3	2:F:89:GLN:HE21	1.75	0.51
3:C:1117:GLU:OE1	3:C:1125:ARG:NH1	2.43	0.51
3:B:1117:GLU:OE1	3:B:1125:ARG:NH1	2.44	0.51
2:F:66:GLY:HA3	2:F:71:PHE:HA	1.92	0.51
3:C:466:PRO:HA	3:C:472:LEU:HB2	1.93	0.51
3:A:1117:GLU:OE1	3:A:1125:ARG:NH1	2.43	0.51
3:B:329:LYS:HG3	3:B:665:ILE:HD11	1.93	0.51
3:C:890:PRO:HA	3:C:907:ALA:HB3	1.93	0.51
3:C:1125:ARG:NH2	3:A:1117:GLU:OE2	2.37	0.50
3:B:890:PRO:HA	3:B:907:ALA:HB3	1.92	0.50
3:B:1123:SER:OG	3:B:1124:SER:N	2.43	0.50
1:H:99:ASN:HB2	1:H:112:ASP:HB2	1.92	0.50
3:B:466:PRO:HA	3:B:472:LEU:HB2	1.94	0.50
3:C:329:LYS:HG3	3:C:665:ILE:HD11	1.92	0.50

Continued on next page...

Continued from previous page...

Atom-1	Atom-2	Interatomic distance (Å)	Clash overlap (Å)
1:X:5:GLN:HB3	1:X:23:ALA:HB3	1.93	0.50
1:X:99:ASN:HB2	1:X:112:ASP:HB2	1.94	0.50
3:A:466:PRO:HA	3:A:472:LEU:HB2	1.93	0.50
3:A:630:ILE:HG21	3:A:658:LEU:HD13	1.94	0.50
1:D:5:GLN:HB3	1:D:23:ALA:HB3	1.93	0.50
3:C:630:ILE:HG21	3:C:658:LEU:HD13	1.94	0.50
3:A:957:GLU:OE1	3:A:1141:ASN:ND2	2.42	0.49
3:B:106:LYS:HB3	3:B:265:TRP:HB2	1.94	0.49
3:C:957:GLU:OE1	3:C:1141:ASN:ND2	2.44	0.49
1:H:5:GLN:HB3	1:H:23:ALA:HB3	1.93	0.49
3:C:491:CYS:HB2	3:C:518:THR:HB	1.95	0.49
3:C:106:LYS:HB3	3:C:265:TRP:HB2	1.95	0.49
2:L:21:LEU:HB2	2:L:73:LEU:HB3	1.95	0.49
2:Y:21:LEU:HB2	2:Y:73:LEU:HB3	1.94	0.49
3:C:809:THR:H	3:C:1145:GLY:HA2	1.78	0.49
2:Y:21:LEU:HD22	2:Y:73:LEU:HD23	1.95	0.48
2:F:21:LEU:HD22	2:F:73:LEU:HD23	1.95	0.48
3:A:175:ILE:HD11	3:A:184:ARG:HB2	1.94	0.48
1:D:38:ARG:NH1	1:D:89:ASP:OD1	2.45	0.48
3:B:491:CYS:HB2	3:B:518:THR:HB	1.95	0.48
3:A:491:CYS:HB2	3:A:518:THR:HB	1.95	0.48
3:A:1123:SER:OG	3:A:1124:SER:N	2.46	0.48
3:B:622:CYS:HB3	3:B:675:CYS:HB3	1.76	0.48
3:B:809:THR:H	3:B:1145:GLY:HA2	1.78	0.48
2:L:21:LEU:HD22	2:L:73:LEU:HD23	1.96	0.48
3:C:662:ARG:NH2	3:C:667:ASN:OD1	2.46	0.48
2:F:21:LEU:HB2	2:F:73:LEU:HB3	1.95	0.48
3:C:1080:ASP:O	3:C:1084:ASN:ND2	2.45	0.48
3:C:99:PHE:HE1	3:C:103:ILE:HG12	1.79	0.48
3:C:175:ILE:HD11	3:C:184:ARG:HB2	1.96	0.47
3:A:662:ARG:NH2	3:A:667:ASN:OD1	2.47	0.47
3:A:327:ARG:NH2	3:A:663:ASP:OD2	2.47	0.47
3:B:814:VAL:HG22	3:B:950:VAL:HG22	1.96	0.47
2:Y:85:VAL:HG22	2:Y:103:LYS:HG3	1.96	0.47
2:L:85:VAL:HG22	2:L:103:LYS:HG3	1.96	0.47
2:Y:33:LEU:HB3	2:Y:51:ALA:HB2	1.96	0.47
3:C:1123:SER:OG	3:C:1124:SER:N	2.46	0.47
3:A:809:THR:H	3:A:1145:GLY:HA2	1.78	0.47
3:B:105:ALA:HB3	3:B:214:PHE:HB2	1.96	0.47
3:B:662:ARG:NH2	3:B:667:ASN:OD1	2.47	0.47
3:B:1080:ASP:O	3:B:1084:ASN:ND2	2.45	0.47

Continued on next page...

Continued from previous page...

Atom-1	Atom-2	Interatomic distance (Å)	Clash overlap (Å)
3:C:25:ASN:HB3	3:C:85:LEU:HG	1.97	0.47
3:C:105:ALA:HB3	3:C:214:PHE:HB2	1.97	0.47
3:B:99:PHE:HE1	3:B:103:ILE:HG12	1.80	0.47
3:B:175:ILE:HD11	3:B:184:ARG:HB2	1.96	0.47
3:A:875:LEU:HD23	3:A:879:VAL:HG11	1.97	0.47
3:A:25:ASN:HB3	3:A:85:LEU:HG	1.96	0.46
3:A:110:THR:HG21	3:A:260:LEU:HB3	1.97	0.46
3:C:327:ARG:NH2	3:C:663:ASP:OD2	2.48	0.46
3:C:1116:ASN:O	3:C:1121:SER:OG	2.34	0.46
3:B:76:ARG:NH2	3:B:97:SER:OG	2.43	0.46
2:F:85:VAL:HG22	2:F:103:LYS:HG3	1.97	0.46
3:B:25:ASN:HB3	3:B:85:LEU:HG	1.97	0.46
3:A:622:CYS:HB3	3:A:675:CYS:HB3	1.76	0.46
3:B:930:CYS:O	3:B:945:TYR:OH	2.33	0.46
3:B:327:ARG:NH2	3:B:663:ASP:OD2	2.48	0.46
3:B:444:VAL:HG21	3:B:477:VAL:HG22	1.98	0.46
3:C:930:CYS:O	3:C:945:TYR:OH	2.33	0.45
3:B:210:ASP:OD1	3:B:210:ASP:N	2.42	0.45
3:A:99:PHE:HE1	3:A:103:ILE:HG12	1.81	0.45
3:A:61:THR:HB	3:A:275:LEU:HD11	1.98	0.45
3:A:1116:ASN:O	3:A:1121:SER:OG	2.34	0.45
2:Y:12:SER:O	2:Y:107:LYS:NZ	2.42	0.45
3:C:444:VAL:HG21	3:C:477:VAL:HG22	1.99	0.45
3:B:957:GLU:OE1	3:B:1141:ASN:ND2	2.46	0.45
3:B:297:GLU:HB3	3:B:314:LEU:HD22	1.98	0.45
2:L:12:SER:O	2:L:107:LYS:NZ	2.43	0.45
3:B:61:THR:HB	3:B:275:LEU:HD11	1.99	0.45
3:B:1116:ASN:O	3:B:1121:SER:OG	2.34	0.45
3:B:417:LEU:HA	3:B:421:ASN:HD22	1.82	0.44
1:X:38:ARG:NH1	1:X:89:ASP:OD1	2.46	0.44
3:A:930:CYS:O	3:A:945:TYR:OH	2.34	0.44
3:C:110:THR:HG21	3:C:260:LEU:HB3	1.99	0.44
3:C:875:LEU:HD23	3:C:879:VAL:HG11	2.00	0.44
3:A:210:ASP:N	3:A:210:ASP:OD1	2.42	0.44
3:B:318:THR:HG23	3:B:677:SER:HB3	1.99	0.44
3:A:76:ARG:NH2	3:A:97:SER:OG	2.44	0.44
3:C:61:THR:HB	3:C:275:LEU:HD11	1.99	0.43
3:C:298:ILE:HD11	3:C:682:ALA:HB3	2.01	0.43
3:C:297:GLU:HB3	3:C:314:LEU:HD22	2.00	0.43
3:A:417:LEU:HA	3:A:421:ASN:HD22	1.83	0.43
1:X:40:SER:HB3	1:X:43:LYS:HB2	2.00	0.43

Continued on next page...

Continued from previous page...

Atom-1	Atom-2	Interatomic distance (Å)	Clash overlap (Å)
3:A:297:GLU:HB3	3:A:314:LEU:HD22	2.01	0.43
3:C:76:ARG:NH2	3:C:97:SER:OG	2.43	0.43
1:D:40:SER:HB3	1:D:43:LYS:HB2	2.00	0.43
3:A:444:VAL:HG21	3:A:477:VAL:HG22	1.99	0.43
1:H:40:SER:HB3	1:H:43:LYS:HB2	2.00	0.43
3:B:630:ILE:HG21	3:B:658:LEU:HD13	1.99	0.42
2:F:12:SER:O	2:F:107:LYS:NZ	2.43	0.42
3:B:414:LEU:HG	3:B:419:SER:HB3	2.01	0.42
3:B:875:LEU:HD23	3:B:879:VAL:HG11	2.00	0.42
3:A:104:PHE:HB2	3:A:269:LEU:HD21	2.01	0.42
3:A:105:ALA:HB3	3:A:214:PHE:HB2	2.02	0.42
3:C:318:THR:HG23	3:C:677:SER:HB3	2.01	0.42
3:A:257:ASN:OD1	3:A:257:ASN:N	2.53	0.42
3:C:920:ASP:OD1	3:C:920:ASP:N	2.53	0.42
1:H:38:ARG:NH1	1:H:89:ASP:OD1	2.46	0.42
3:A:318:THR:HG23	3:A:677:SER:HB3	2.01	0.42
3:B:298:ILE:HD11	3:B:682:ALA:HB3	2.01	0.42
1:H:107:VAL:HG21	3:A:471:VAL:HG22	2.01	0.42
3:A:351:ASN:OD1	3:A:351:ASN:N	2.52	0.42
3:B:110:THR:HG21	3:B:260:LEU:HB3	2.02	0.41
3:C:417:LEU:HA	3:C:421:ASN:HD22	1.84	0.41
2:Y:37:GLN:HB3	2:Y:47:LEU:HD11	2.02	0.41
3:A:175:ILE:HD13	3:A:175:ILE:HA	1.92	0.41
3:B:323:ALA:H	3:B:623:VAL:HG12	1.85	0.41
3:B:892:LEU:HD23	3:B:892:LEU:HA	1.92	0.41
3:C:104:PHE:HB2	3:C:269:LEU:HD21	2.02	0.41
3:A:920:ASP:OD1	3:A:920:ASP:N	2.54	0.41
3:C:446:ARG:NH2	3:C:476:ASP:O	2.44	0.41
3:A:414:LEU:HG	3:A:419:SER:HB3	2.01	0.41
3:B:104:PHE:HB2	3:B:269:LEU:HD21	2.02	0.41
1:D:111:MET:HB2	1:D:114:TRP:HE1	1.85	0.41
3:B:181:GLY:HA3	3:B:257:ASN:HD21	1.86	0.41
3:B:991:ARG:HD2	3:B:991:ARG:HA	1.90	0.41
3:B:257:ASN:OD1	3:B:257:ASN:N	2.53	0.41
3:A:1080:ASP:O	3:A:1084:ASN:ND2	2.52	0.40
3:B:920:ASP:OD1	3:B:920:ASP:N	2.53	0.40
3:C:181:GLY:HA3	3:C:257:ASN:HD21	1.87	0.40
1:X:107:VAL:HG21	3:C:471:VAL:HG13	2.03	0.40
3:A:999:MET:HA	3:A:1002:LEU:HB2	2.04	0.40
3:B:1007:LYS:HD3	3:B:1007:LYS:HA	1.91	0.40
3:C:641:ALA:HB3	3:C:669:THR:HG21	2.04	0.40

Continued on next page...

Continued from previous page...

Atom-1	Atom-2	Interatomic distance (Å)	Clash overlap (Å)
3:B:1157:LYS:HA	3:B:1157:LYS:HD2	1.94	0.40

There are no symmetry-related clashes.

5.3 Torsion angles [i](#)

5.3.1 Protein backbone [i](#)

In the following table, the Percentiles column shows the percent Ramachandran outliers of the chain as a percentile score with respect to all PDB entries followed by that with respect to all EM entries.

The Analysed column shows the number of residues for which the backbone conformation was analysed, and the total number of residues.

Mol	Chain	Analysed	Favoured	Allowed	Outliers	Percentiles	
1	D	122/124 (98%)	120 (98%)	1 (1%)	1 (1%)	16	49
1	H	122/124 (98%)	119 (98%)	2 (2%)	1 (1%)	16	49
1	X	122/124 (98%)	119 (98%)	2 (2%)	1 (1%)	16	49
2	F	105/107 (98%)	100 (95%)	5 (5%)	0	100	100
2	L	105/107 (98%)	100 (95%)	5 (5%)	0	100	100
2	Y	105/107 (98%)	101 (96%)	4 (4%)	0	100	100
3	A	1163/1322 (88%)	1128 (97%)	35 (3%)	0	100	100
3	B	1163/1322 (88%)	1127 (97%)	36 (3%)	0	100	100
3	C	1163/1322 (88%)	1128 (97%)	35 (3%)	0	100	100
All	All	4170/4659 (90%)	4042 (97%)	125 (3%)	3 (0%)	50	78

All (3) Ramachandran outliers are listed below:

Mol	Chain	Res	Type
1	X	112	ASP
1	H	112	ASP
1	D	112	ASP

5.3.2 Protein sidechains [i](#)

In the following table, the Percentiles column shows the percent sidechain outliers of the chain as a percentile score with respect to all PDB entries followed by that with respect to all EM entries.

The Analysed column shows the number of residues for which the sidechain conformation was analysed, and the total number of residues.

Mol	Chain	Analysed	Rotameric	Outliers	Percentiles	
1	D	103/103 (100%)	103 (100%)	0	100	100
1	H	103/103 (100%)	103 (100%)	0	100	100
1	X	103/103 (100%)	103 (100%)	0	100	100
2	F	88/88 (100%)	87 (99%)	1 (1%)	70	80
2	L	88/88 (100%)	87 (99%)	1 (1%)	70	80
2	Y	88/88 (100%)	87 (99%)	1 (1%)	70	80
3	A	1022/1151 (89%)	1022 (100%)	0	100	100
3	B	1022/1151 (89%)	1022 (100%)	0	100	100
3	C	1022/1151 (89%)	1022 (100%)	0	100	100
All	All	3639/4026 (90%)	3636 (100%)	3 (0%)	92	96

All (3) residues with a non-rotameric sidechain are listed below:

Mol	Chain	Res	Type
2	Y	89	GLN
2	L	24	ARG
2	F	24	ARG

Sometimes sidechains can be flipped to improve hydrogen bonding and reduce clashes. All (4) such sidechains are listed below:

Mol	Chain	Res	Type
2	Y	89	GLN
3	C	770	ASN
3	A	770	ASN
3	B	770	ASN

5.3.3 RNA [i](#)

There are no RNA molecules in this entry.

5.4 Non-standard residues in protein, DNA, RNA chains [i](#)

There are no non-standard protein/DNA/RNA residues in this entry.

5.5 Carbohydrates [i](#)

There are no oligosaccharides in this entry.

5.6 Ligand geometry [i](#)

15 ligands are modelled in this entry.

In the following table, the Counts columns list the number of bonds (or angles) for which Mogul statistics could be retrieved, the number of bonds (or angles) that are observed in the model and the number of bonds (or angles) that are defined in the Chemical Component Dictionary. The Link column lists molecule types, if any, to which the group is linked. The Z score for a bond length (or angle) is the number of standard deviations the observed value is removed from the expected value. A bond length (or angle) with $|Z| > 2$ is considered an outlier worth inspection. RMSZ is the root-mean-square of all Z scores of the bond lengths (or angles).

Mol	Type	Chain	Res	Link	Bond lengths			Bond angles		
					Counts	RMSZ	# Z > 2	Counts	RMSZ	# Z > 2
4	NAG	C	1404	3	14,14,15	0.35	0	17,19,21	0.51	0
4	NAG	B	1405	3	14,14,15	1.29	1 (7%)	17,19,21	1.51	1 (5%)
4	NAG	A	1405	3	14,14,15	1.30	1 (7%)	17,19,21	1.50	1 (5%)
4	NAG	B	1401	3	14,14,15	0.53	0	17,19,21	0.36	0
4	NAG	B	1402	3	14,14,15	0.62	0	17,19,21	0.36	0
4	NAG	B	1404	3	14,14,15	0.35	0	17,19,21	0.52	0
4	NAG	A	1402	3	14,14,15	0.64	0	17,19,21	0.36	0
4	NAG	C	1403	3	14,14,15	0.39	0	17,19,21	0.53	0
4	NAG	C	1402	3	14,14,15	0.48	0	17,19,21	0.37	0
4	NAG	A	1401	3	14,14,15	0.54	0	17,19,21	0.36	0
4	NAG	C	1401	3	14,14,15	0.54	0	17,19,21	0.35	0
4	NAG	B	1403	3	14,14,15	0.40	0	17,19,21	0.53	0
4	NAG	C	1405	3	14,14,15	1.28	1 (7%)	17,19,21	1.51	1 (5%)
4	NAG	A	1403	3	14,14,15	0.38	0	17,19,21	0.54	0
4	NAG	A	1404	3	14,14,15	0.34	0	17,19,21	0.52	0

In the following table, the Chirals column lists the number of chiral outliers, the number of chiral centers analysed, the number of these observed in the model and the number defined in the Chemical Component Dictionary. Similar counts are reported in the Torsion and Rings columns. '-' means no outliers of that kind were identified.

Mol	Type	Chain	Res	Link	Chirals	Torsions	Rings
4	NAG	C	1404	3	-	2/6/23/26	0/1/1/1
4	NAG	B	1405	3	-	2/6/23/26	0/1/1/1
4	NAG	A	1405	3	-	2/6/23/26	0/1/1/1
4	NAG	B	1401	3	-	2/6/23/26	0/1/1/1
4	NAG	B	1402	3	-	2/6/23/26	0/1/1/1
4	NAG	B	1404	3	-	2/6/23/26	0/1/1/1
4	NAG	A	1402	3	-	2/6/23/26	0/1/1/1
4	NAG	C	1403	3	-	0/6/23/26	0/1/1/1
4	NAG	C	1402	3	-	2/6/23/26	0/1/1/1
4	NAG	A	1401	3	-	2/6/23/26	0/1/1/1
4	NAG	C	1401	3	-	2/6/23/26	0/1/1/1
4	NAG	B	1403	3	-	0/6/23/26	0/1/1/1
4	NAG	C	1405	3	-	2/6/23/26	0/1/1/1
4	NAG	A	1403	3	-	0/6/23/26	0/1/1/1
4	NAG	A	1404	3	-	2/6/23/26	0/1/1/1

All (3) bond length outliers are listed below:

Mol	Chain	Res	Type	Atoms	Z	Observed(Å)	Ideal(Å)
4	A	1405	NAG	O5-C1	4.69	1.51	1.43
4	B	1405	NAG	O5-C1	4.65	1.51	1.43
4	C	1405	NAG	O5-C1	4.62	1.51	1.43

All (3) bond angle outliers are listed below:

Mol	Chain	Res	Type	Atoms	Z	Observed(°)	Ideal(°)
4	B	1405	NAG	C1-O5-C5	6.02	120.34	112.19
4	C	1405	NAG	C1-O5-C5	6.01	120.33	112.19
4	A	1405	NAG	C1-O5-C5	6.00	120.32	112.19

There are no chirality outliers.

All (24) torsion outliers are listed below:

Mol	Chain	Res	Type	Atoms
4	C	1402	NAG	O5-C5-C6-O6
4	C	1405	NAG	O5-C5-C6-O6
4	B	1405	NAG	O5-C5-C6-O6
4	C	1404	NAG	O5-C5-C6-O6
4	A	1404	NAG	O5-C5-C6-O6

Continued on next page...

Continued from previous page...

Mol	Chain	Res	Type	Atoms
4	B	1404	NAG	O5-C5-C6-O6
4	A	1405	NAG	O5-C5-C6-O6
4	C	1402	NAG	C4-C5-C6-O6
4	C	1401	NAG	O5-C5-C6-O6
4	B	1401	NAG	O5-C5-C6-O6
4	A	1402	NAG	C4-C5-C6-O6
4	B	1402	NAG	C4-C5-C6-O6
4	A	1405	NAG	C4-C5-C6-O6
4	C	1404	NAG	C4-C5-C6-O6
4	B	1404	NAG	C4-C5-C6-O6
4	A	1404	NAG	C4-C5-C6-O6
4	C	1405	NAG	C4-C5-C6-O6
4	B	1405	NAG	C4-C5-C6-O6
4	A	1401	NAG	O5-C5-C6-O6
4	A	1402	NAG	O5-C5-C6-O6
4	B	1402	NAG	O5-C5-C6-O6
4	C	1401	NAG	C4-C5-C6-O6
4	B	1401	NAG	C4-C5-C6-O6
4	A	1401	NAG	C4-C5-C6-O6

There are no ring outliers.

No monomer is involved in short contacts.

5.7 Other polymers [i](#)

There are no such residues in this entry.

5.8 Polymer linkage issues [i](#)

There are no chain breaks in this entry.

6 Map visualisation [i](#)

This section contains visualisations of the EMDB entry EMD-13550. These allow visual inspection of the internal detail of the map and identification of artifacts.

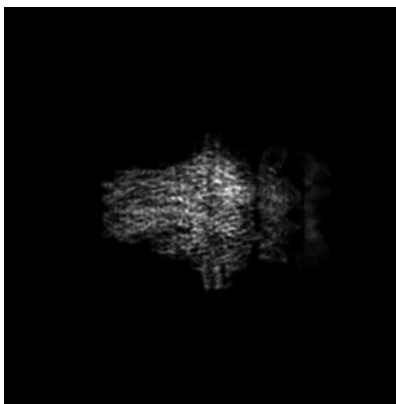
Images derived from a raw map, generated by summing the deposited half-maps, are presented below the corresponding image components of the primary map to allow further visual inspection and comparison with those of the primary map.

6.1 Orthogonal projections [i](#)

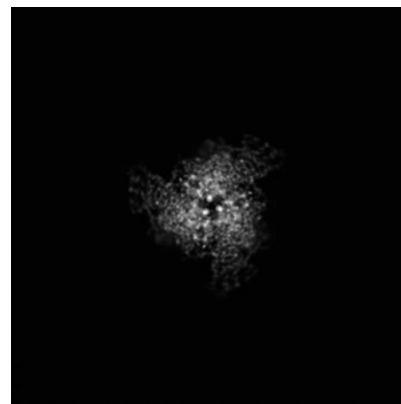
6.1.1 Primary map



X

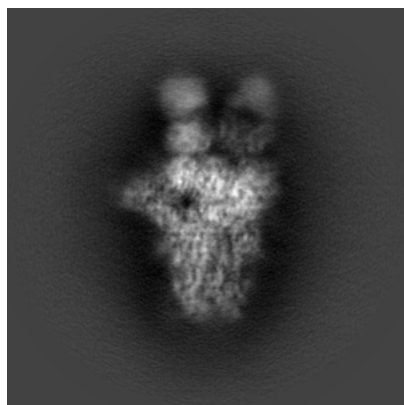


Y

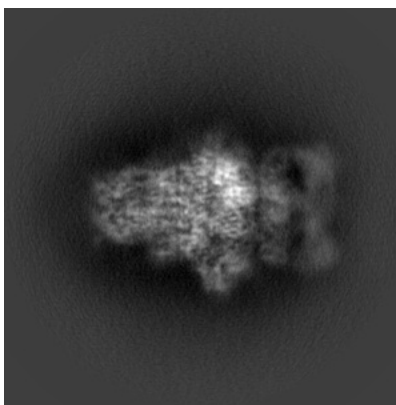


Z

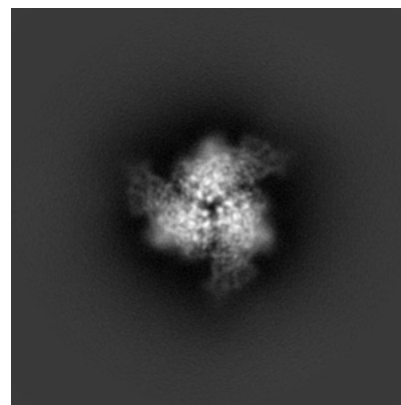
6.1.2 Raw map



X



Y



Z

The images above show the map projected in three orthogonal directions.

6.2 Central slices [i](#)

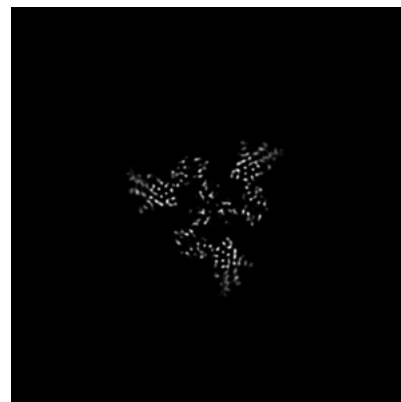
6.2.1 Primary map



X Index: 160

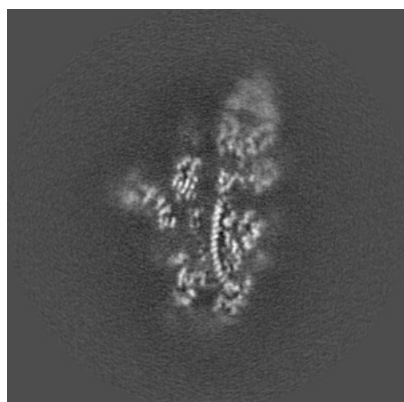


Y Index: 160

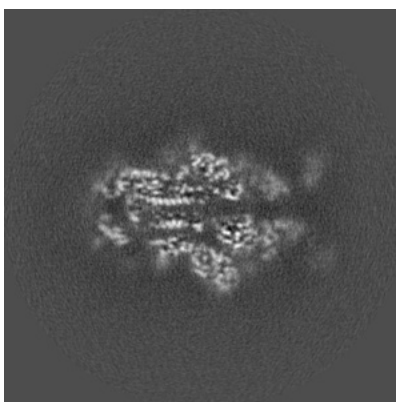


Z Index: 160

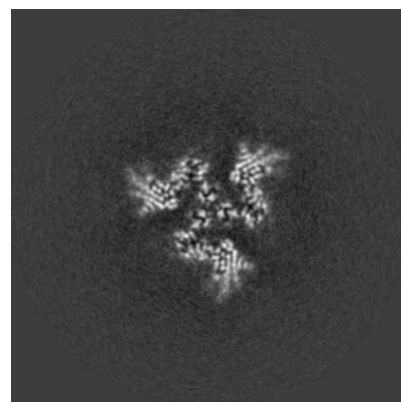
6.2.2 Raw map



X Index: 160



Y Index: 160



Z Index: 160

The images above show central slices of the map in three orthogonal directions.

6.3 Largest variance slices [i](#)

6.3.1 Primary map



X Index: 174

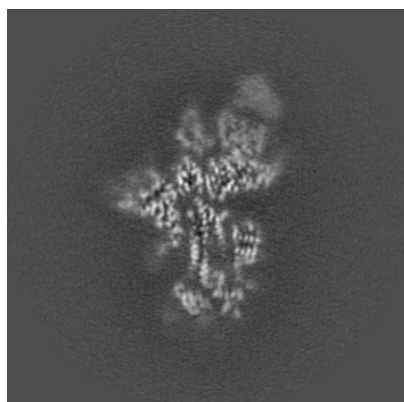


Y Index: 148

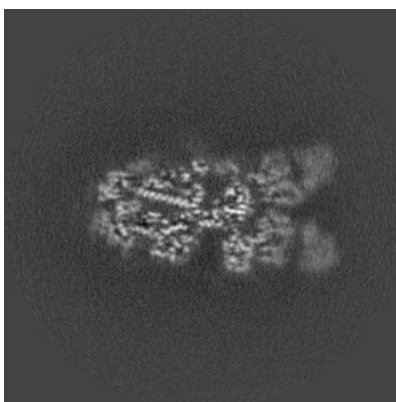


Z Index: 179

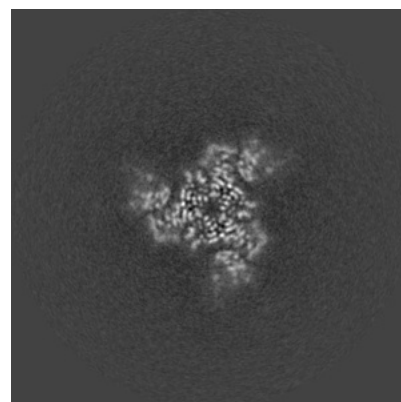
6.3.2 Raw map



X Index: 169



Y Index: 148

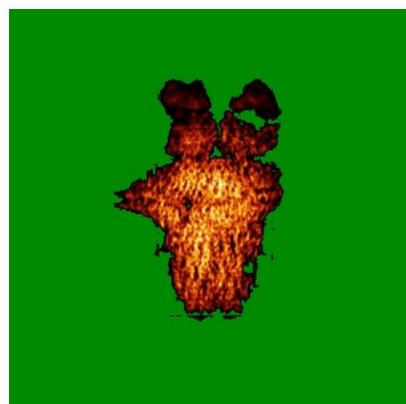


Z Index: 181

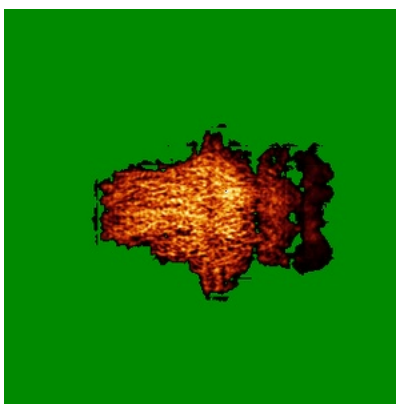
The images above show the largest variance slices of the map in three orthogonal directions.

6.4 Orthogonal standard-deviation projections (False-color) [i](#)

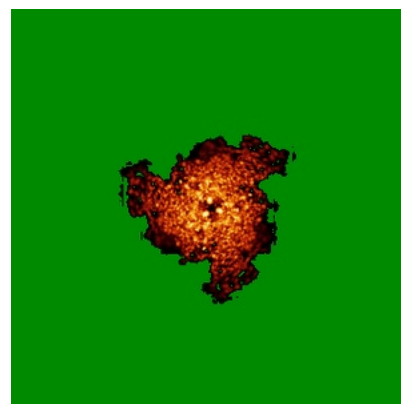
6.4.1 Primary map



X



Y

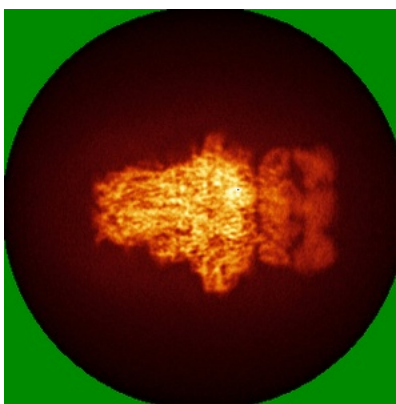


Z

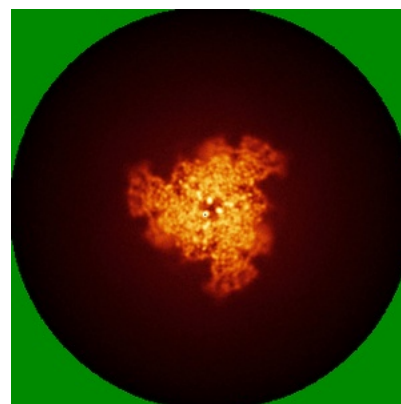
6.4.2 Raw map



X



Y

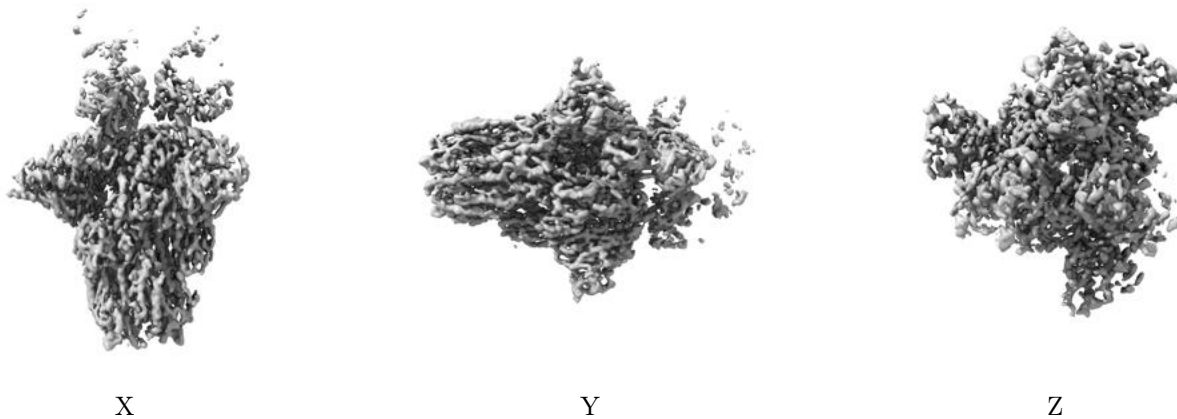


Z

The images above show the map standard deviation projections with false color in three orthogonal directions. Minimum values are shown in green, max in blue, and dark to light orange shades represent small to large values respectively.

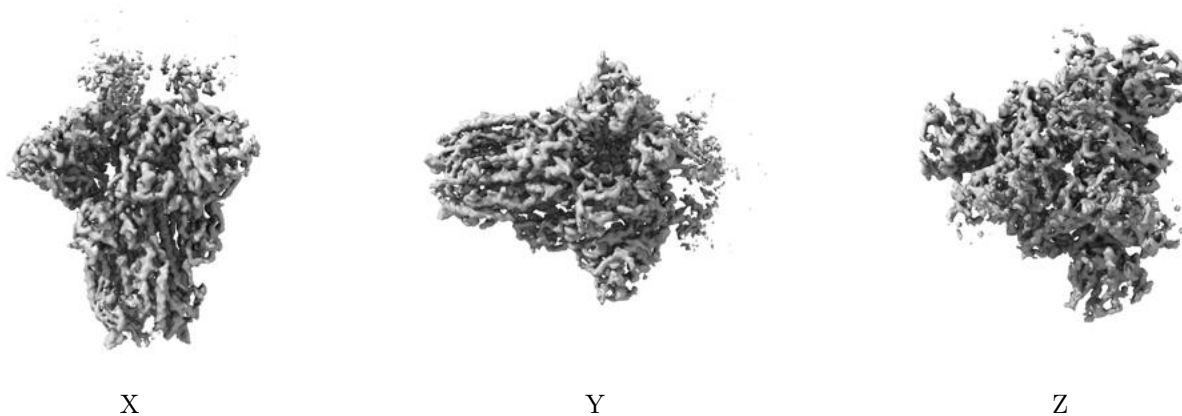
6.5 Orthogonal surface views [i](#)

6.5.1 Primary map



The images above show the 3D surface view of the map at the recommended contour level 0.2. These images, in conjunction with the slice images, may facilitate assessment of whether an appropriate contour level has been provided.

6.5.2 Raw map



These images show the 3D surface of the raw map. The raw map's contour level was selected so that its surface encloses the same volume as the primary map does at its recommended contour level.

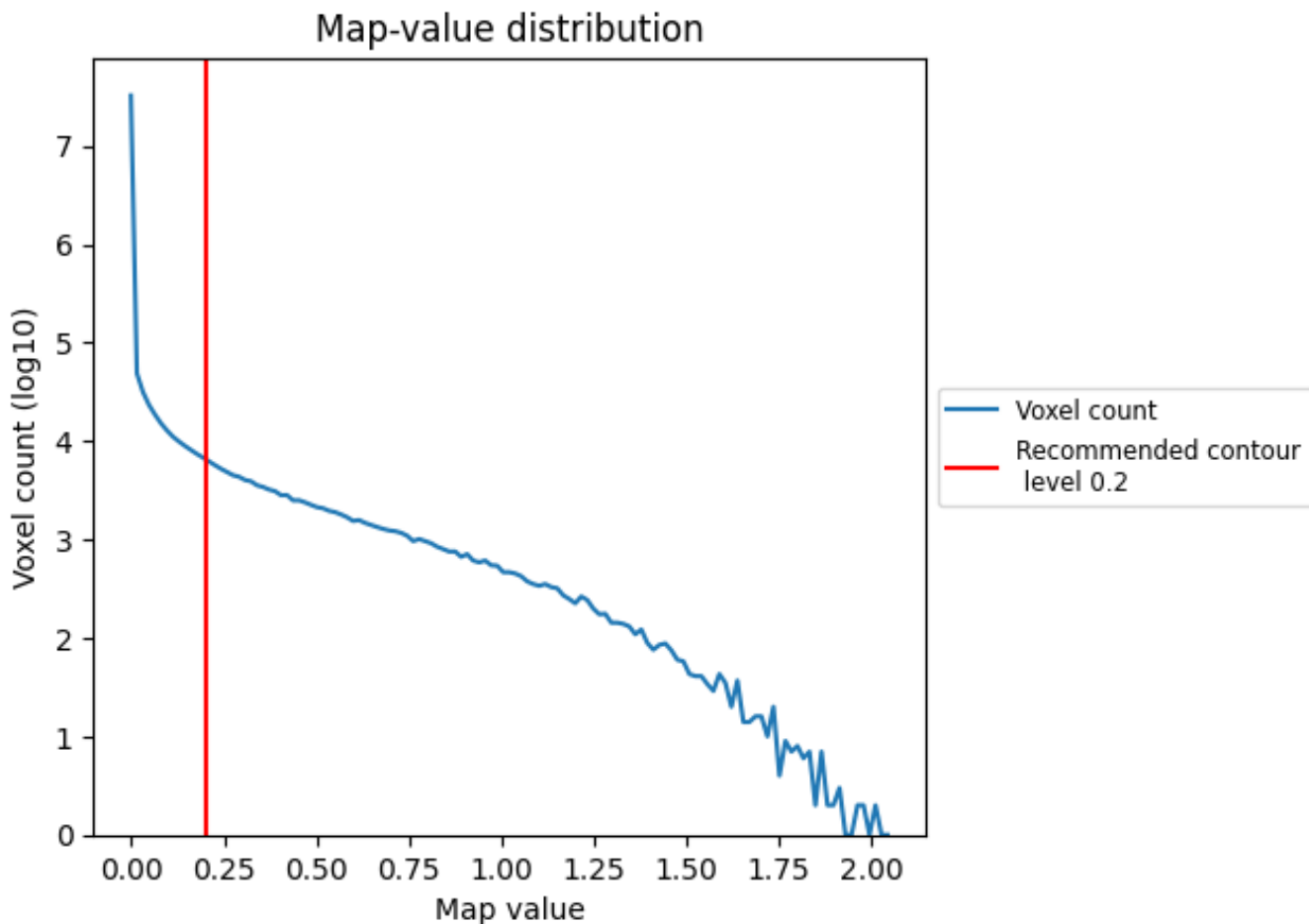
6.6 Mask visualisation [i](#)

This section was not generated. No masks/segmentation were deposited.

7 Map analysis [i](#)

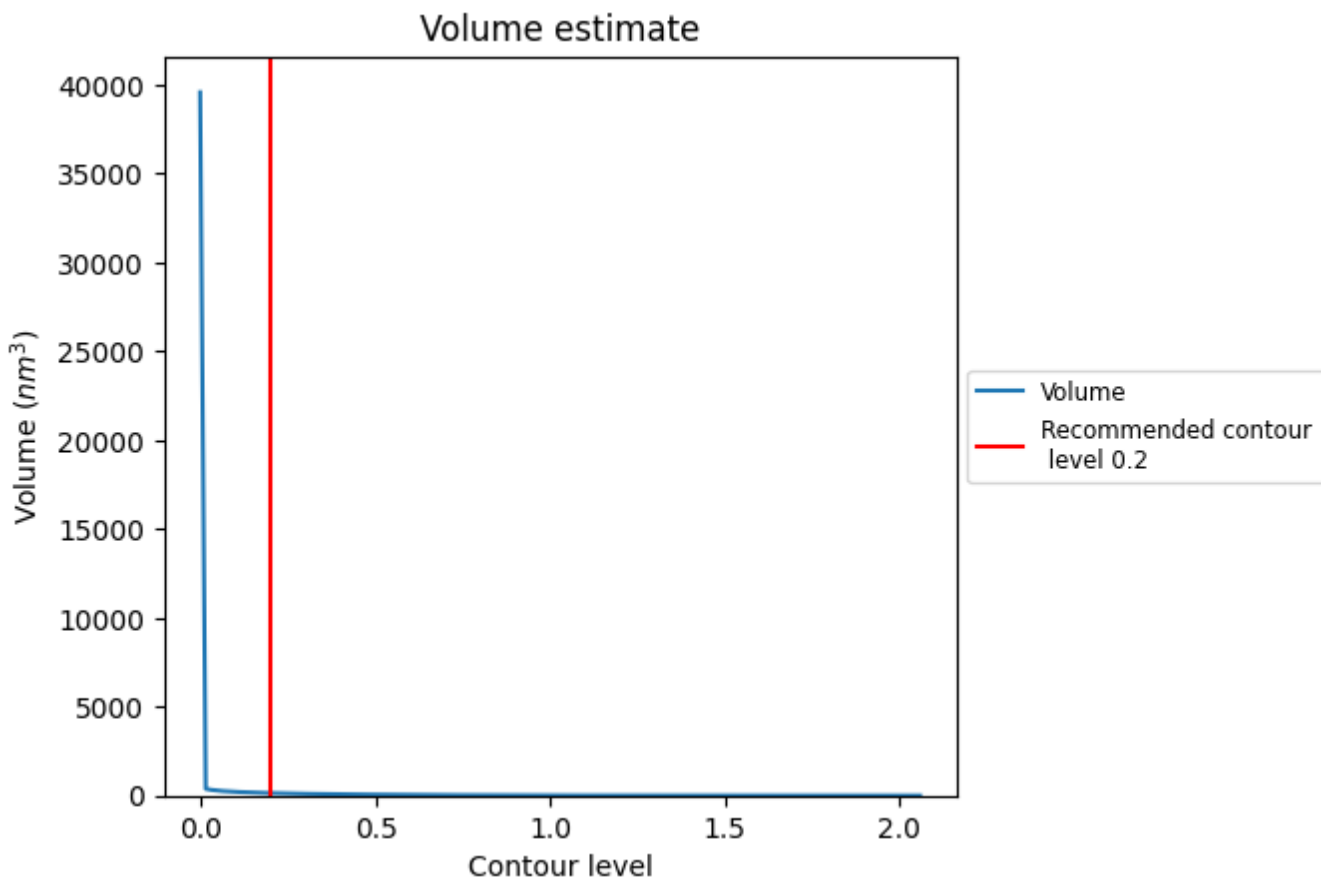
This section contains the results of statistical analysis of the map.

7.1 Map-value distribution [i](#)



The map-value distribution is plotted in 128 intervals along the x-axis. The y-axis is logarithmic. A spike in this graph at zero usually indicates that the volume has been masked.

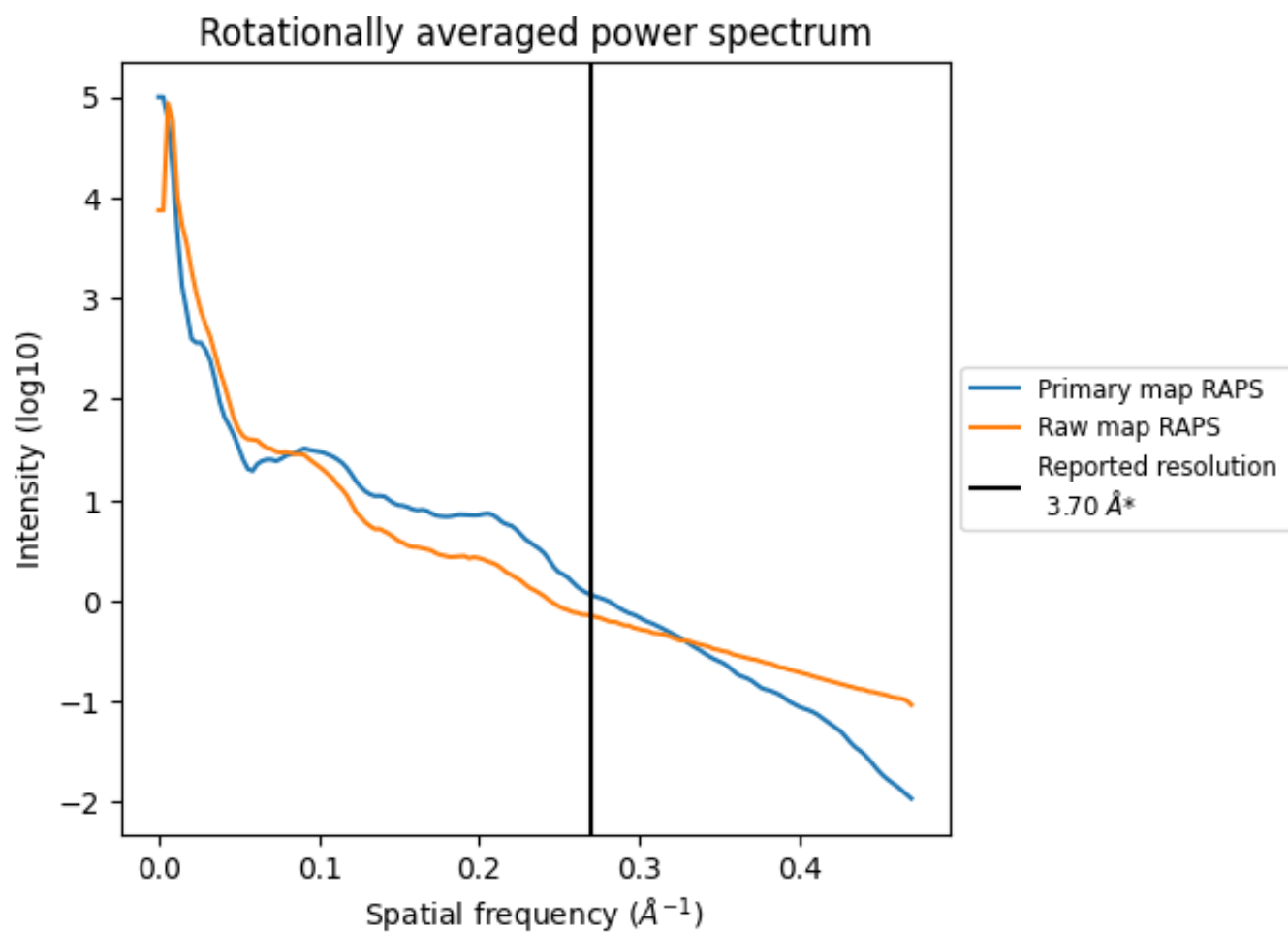
7.2 Volume estimate [i](#)



The volume at the recommended contour level is 139 nm³; this corresponds to an approximate mass of 125 kDa.

The volume estimate graph shows how the enclosed volume varies with the contour level. The recommended contour level is shown as a vertical line and the intersection between the line and the curve gives the volume of the enclosed surface at the given level.

7.3 Rotationally averaged power spectrum i

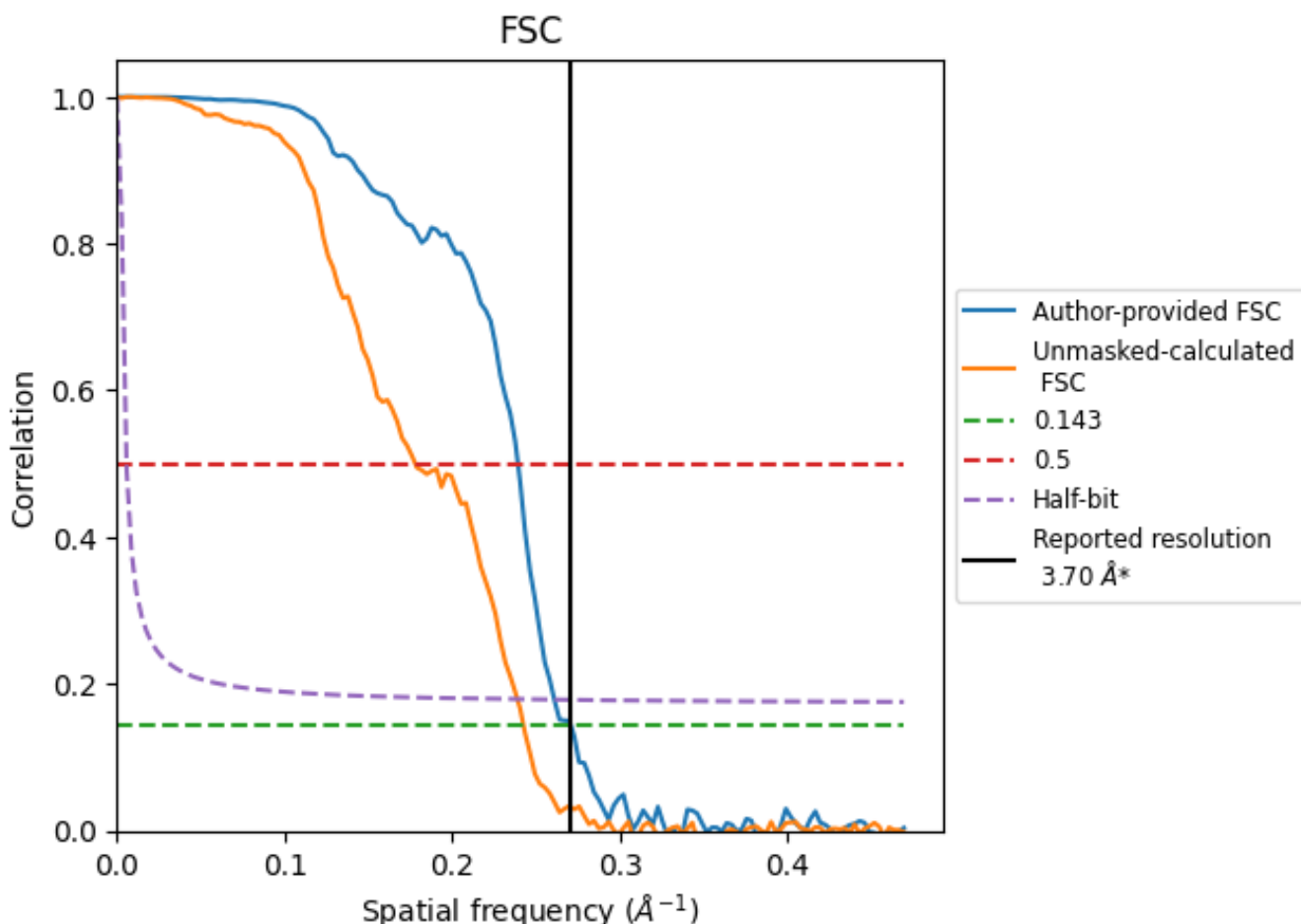


*Reported resolution corresponds to spatial frequency of 0.270 Å⁻¹

8 Fourier-Shell correlation [i](#)

Fourier-Shell Correlation (FSC) is the most commonly used method to estimate the resolution of single-particle and subtomogram-averaged maps. The shape of the curve depends on the imposed symmetry, mask and whether or not the two 3D reconstructions used were processed from a common reference. The reported resolution is shown as a black line. A curve is displayed for the half-bit criterion in addition to lines showing the 0.143 gold standard cut-off and 0.5 cut-off.

8.1 FSC [i](#)



*Reported resolution corresponds to spatial frequency of 0.270 Å⁻¹

8.2 Resolution estimates [i](#)

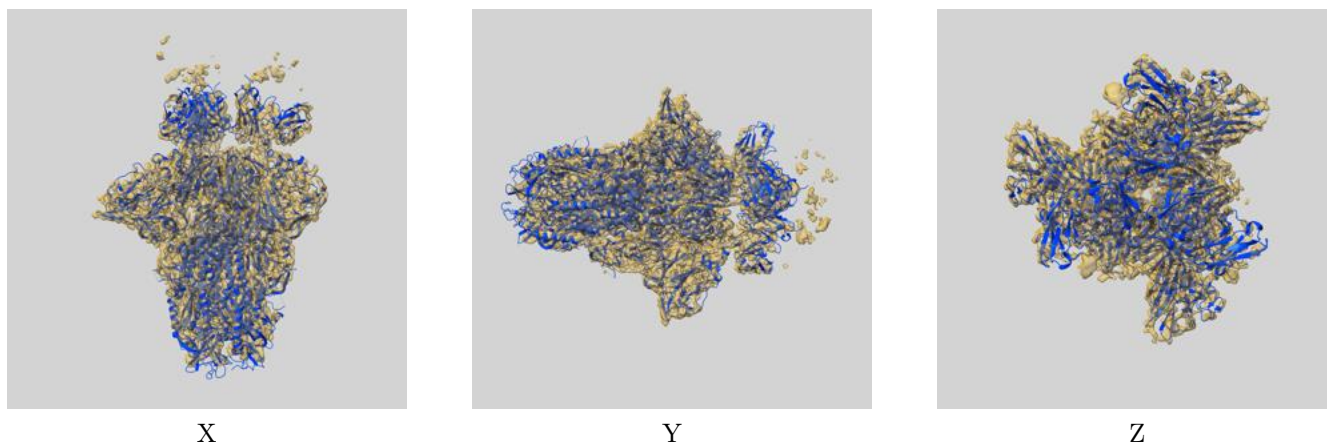
Resolution estimate (Å)	Estimation criterion (FSC cut-off)		
	0.143	0.5	Half-bit
Reported by author	3.70	-	-
Author-provided FSC curve	3.69	4.18	3.83
Unmasked-calculated*	4.12	5.62	4.18

*Resolution estimate based on FSC curve calculated by comparison of deposited half-maps. The value from deposited half-maps intersecting FSC 0.143 CUT-OFF 4.12 differs from the reported value 3.7 by more than 10 %

9 Map-model fit [i](#)

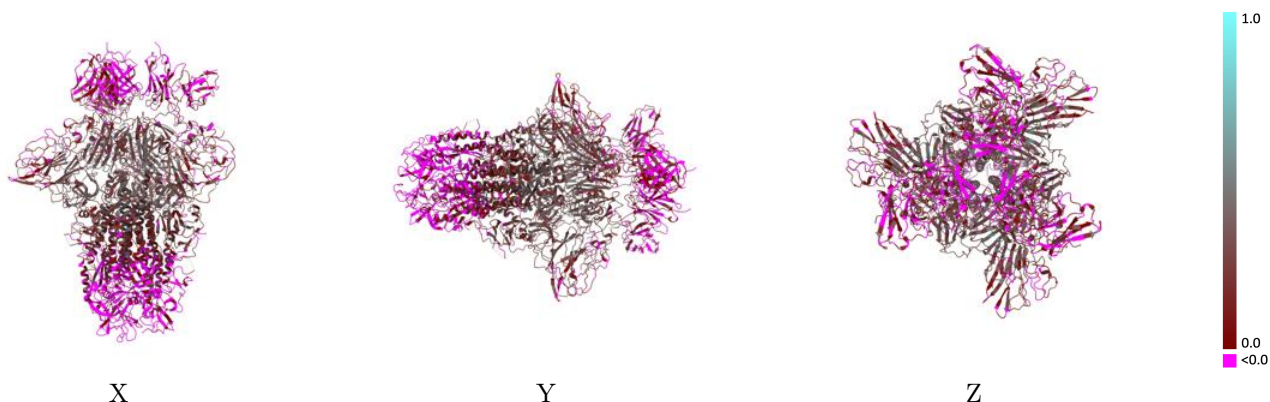
This section contains information regarding the fit between EMDB map EMD-13550 and PDB model 7PNQ. Per-residue inclusion information can be found in section 3 on page 12.

9.1 Map-model overlay [i](#)



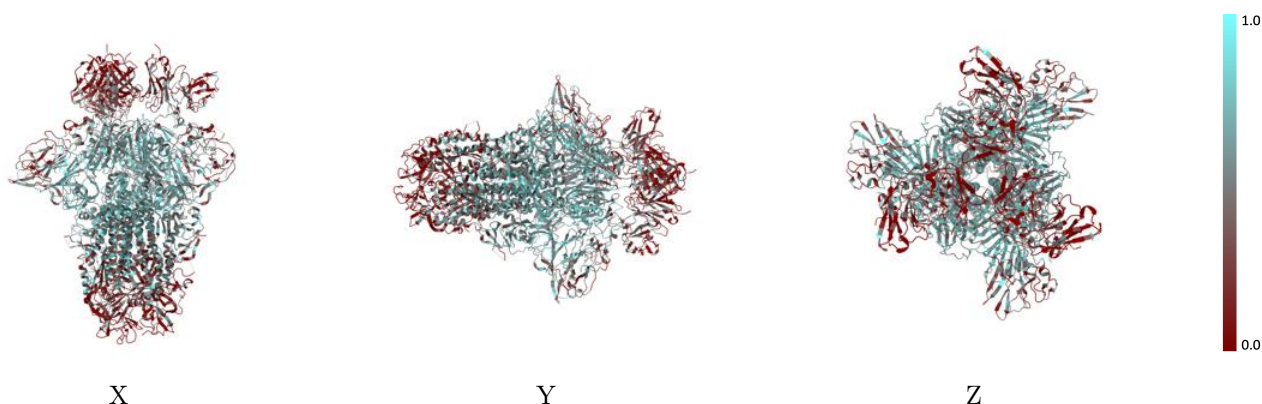
The images above show the 3D surface view of the map at the recommended contour level 0.2 at 50% transparency in yellow overlaid with a ribbon representation of the model coloured in blue. These images allow for the visual assessment of the quality of fit between the atomic model and the map.

9.2 Q-score mapped to coordinate model [i](#)



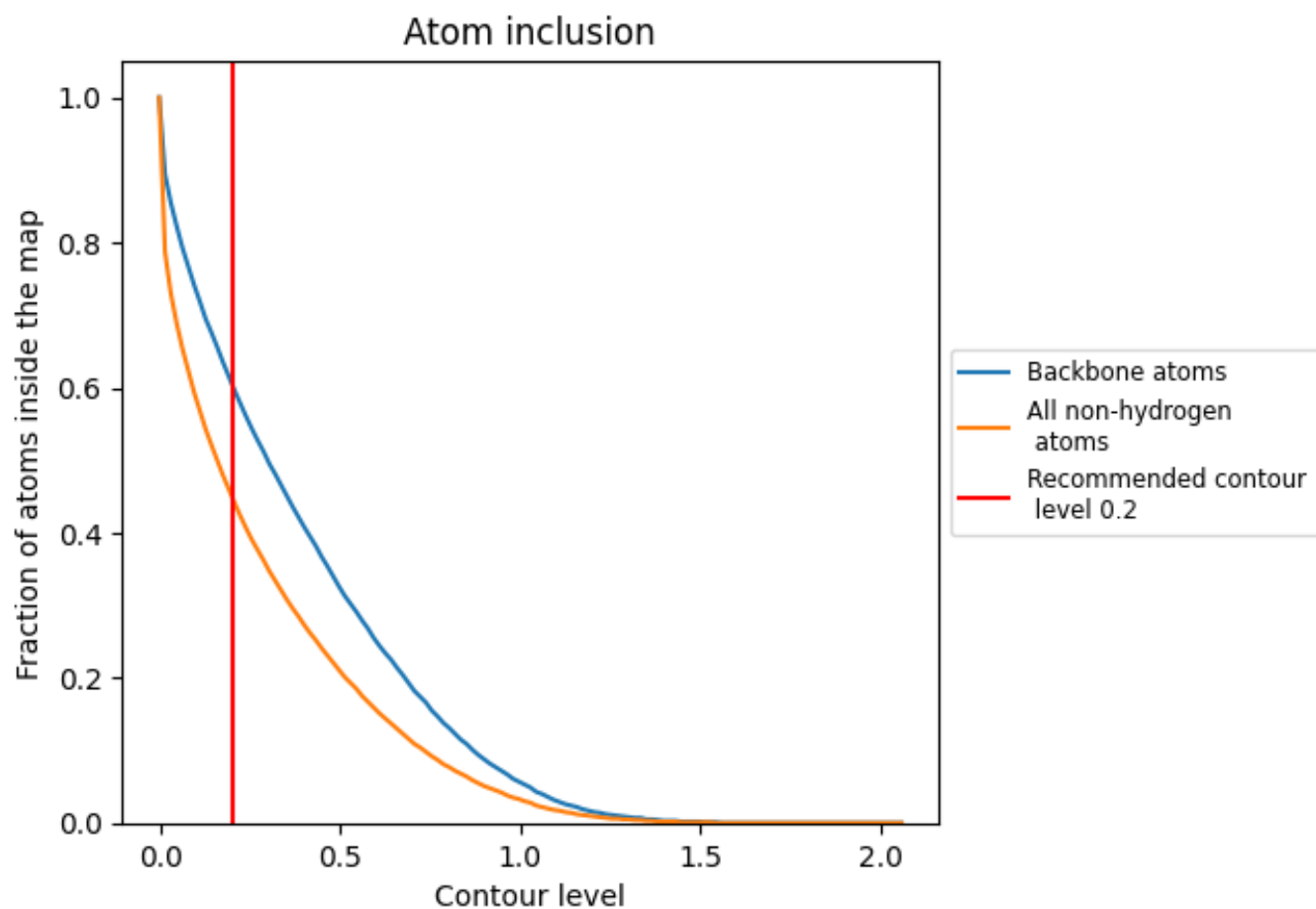
The images above show the model with each residue coloured according to its Q-score. This shows their resolvability in the map with higher Q-score values reflecting better resolvability. Please note: Q-score is calculating the resolvability of atoms, and thus high values are only expected at resolutions at which atoms can be resolved. Low Q-score values may therefore be expected for many entries.

9.3 Atom inclusion mapped to coordinate model [i](#)



The images above show the model with each residue coloured according to its atom inclusion. This shows to what extent they are inside the map at the recommended contour level (0.2).

9.4 Atom inclusion [i](#)



At the recommended contour level, 60% of all backbone atoms, 45% of all non-hydrogen atoms, are inside the map.

9.5 Map-model fit summary [i](#)

The table lists the average atom inclusion at the recommended contour level (0.2) and Q-score for the entire model and for each chain.

Chain	Atom inclusion	Q-score
All	0.4500	0.1660
A	0.5010	0.1950
B	0.4970	0.1940
C	0.4900	0.1940
D	0.2610	0.0160
F	0.2140	0.0220
H	0.2030	0.0100
L	0.1550	0.0280
X	0.2210	0.0080
Y	0.1810	0.0180

