



wwPDB EM Validation Summary Report ⓘ

May 25, 2024 – 02:36 PM EDT

PDB ID : 7RAU
EMDB ID : EMD-24386
Title : Structure of TRPV3 in complex with osthole
Authors : Neuberger, A.; Nadezhdin, K.D.; Sobolevsky, A.I.
Deposited on : 2021-07-02
Resolution : 3.99 Å (reported)

This is a wwPDB EM Validation Summary Report for a publicly released PDB entry.

We welcome your comments at validation@mail.wwpdb.org

A user guide is available at

<https://www.wwpdb.org/validation/2017/EMValidationReportHelp>

with specific help available everywhere you see the ⓘ symbol.

The types of validation reports are described at

<http://www.wwpdb.org/validation/2017/FAQs#types>.

The following versions of software and data (see [references ⓘ](#)) were used in the production of this report:

EMDB validation analysis : 0.0.1.dev92
Mogul : 1.8.5 (274361), CSD as541be (2020)
MolProbity : 4.02b-467
buster-report : 1.1.7 (2018)
Percentile statistics : 20191225.v01 (using entries in the PDB archive December 25th 2019)
MapQ : 1.9.13
Ideal geometry (proteins) : Engh & Huber (2001)
Ideal geometry (DNA, RNA) : Parkinson et al. (1996)
Validation Pipeline (wwPDB-VP) : 2.36.2

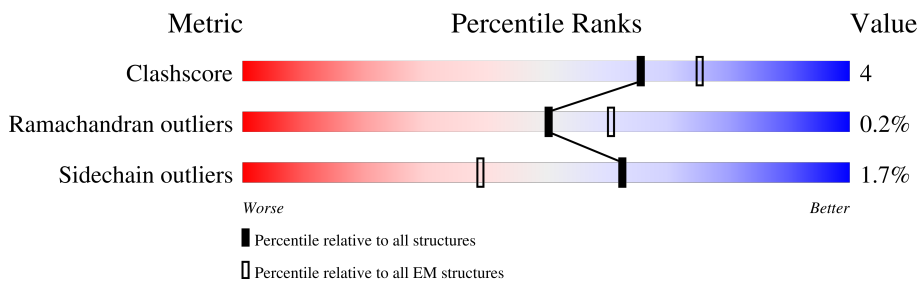
1 Overall quality at a glance

The following experimental techniques were used to determine the structure:

ELECTRON MICROSCOPY

The reported resolution of this entry is 3.99 Å.

Percentile scores (ranging between 0-100) for global validation metrics of the entry are shown in the following graphic. The table shows the number of entries on which the scores are based.



Metric	Whole archive (#Entries)	EM structures (#Entries)
Clashscore	158937	4297
Ramachandran outliers	154571	4023
Sidechain outliers	154315	3826

The table below summarises the geometric issues observed across the polymeric chains and their fit to the map. The red, orange, yellow and green segments of the bar indicate the fraction of residues that contain outliers for ≥ 3 , 2, 1 and 0 types of geometric quality criteria respectively. A grey segment represents the fraction of residues that are not modelled. The numeric value for each fraction is indicated below the corresponding segment, with a dot representing fractions $\leq 5\%$. The upper red bar (where present) indicates the fraction of residues that have poor fit to the EM map (all-atom inclusion $< 40\%$). The numeric value is given above the bar.

Mol	Chain	Length	Quality of chain
1	A	808	
1	B	808	
1	C	808	
1	D	808	

The following table lists non-polymeric compounds, carbohydrate monomers and non-standard residues in protein, DNA, RNA chains that are outliers for geometric or electron-density-fit criteria:

Mol	Type	Chain	Res	Chirality	Geometry	Clashes	Electron density
2	A0O	A	901	-	X	-	-

Continued on next page...

Continued from previous page...

Mol	Type	Chain	Res	Chirality	Geometry	Clashes	Electron density
2	A0O	A	902	-	X	-	-
2	A0O	B	901	-	X	-	-
2	A0O	B	902	-	X	-	-
2	A0O	C	901	-	X	-	-
2	A0O	C	902	-	X	-	-
2	A0O	D	901	-	X	-	-
2	A0O	D	902	-	X	-	-

2 Entry composition i

There are 2 unique types of molecules in this entry. The entry contains 20000 atoms, of which 0 are hydrogens and 0 are deuteriums.

In the tables below, the AltConf column contains the number of residues with at least one atom in alternate conformation and the Trace column contains the number of residues modelled with at most 2 atoms.

- Molecule 1 is a protein called Transient receptor potential cation channel subfamily V member 3.

Mol	Chain	Residues	Atoms					AltConf	Trace
			Total	C	N	O	S		
1	A	610	4964	3238	818	879	29	0	0
1	B	610	4964	3238	818	879	29	0	0
1	C	610	4964	3238	818	879	29	0	0
1	D	610	4964	3238	818	879	29	0	0

There are 76 discrepancies between the modelled and reference sequences:

Chain	Residue	Modelled	Actual	Comment	Reference
A	2	GLY	ASN	conflict	UNP Q8K424
A	564	ALA	TYR	engineered mutation	UNP Q8K424
A	792	LEU	-	expression tag	UNP Q8K424
A	793	VAL	-	expression tag	UNP Q8K424
A	794	PRO	-	expression tag	UNP Q8K424
A	795	ARG	-	expression tag	UNP Q8K424
A	796	GLY	-	expression tag	UNP Q8K424
A	797	SER	-	expression tag	UNP Q8K424
A	798	ALA	-	expression tag	UNP Q8K424
A	799	ALA	-	expression tag	UNP Q8K424
A	800	ALA	-	expression tag	UNP Q8K424
A	801	TRP	-	expression tag	UNP Q8K424
A	802	SER	-	expression tag	UNP Q8K424
A	803	HIS	-	expression tag	UNP Q8K424
A	804	PRO	-	expression tag	UNP Q8K424
A	805	GLN	-	expression tag	UNP Q8K424
A	806	PHE	-	expression tag	UNP Q8K424
A	807	GLU	-	expression tag	UNP Q8K424
A	808	LYS	-	expression tag	UNP Q8K424
B	2	GLY	ASN	conflict	UNP Q8K424
B	564	ALA	TYR	engineered mutation	UNP Q8K424

Continued on next page...

Continued from previous page...

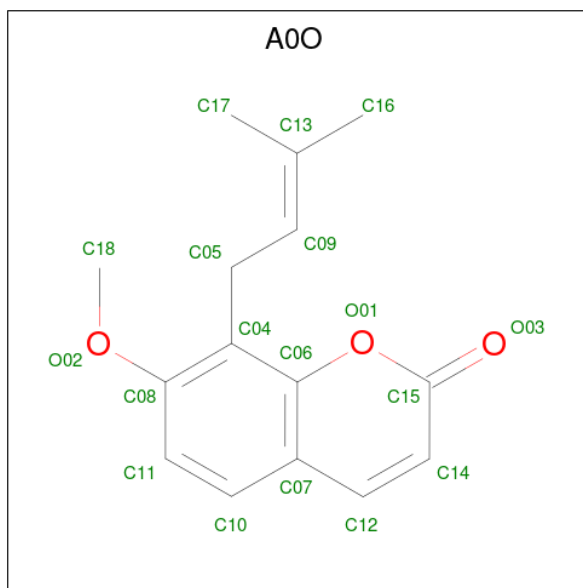
Chain	Residue	Modelled	Actual	Comment	Reference
B	792	LEU	-	expression tag	UNP Q8K424
B	793	VAL	-	expression tag	UNP Q8K424
B	794	PRO	-	expression tag	UNP Q8K424
B	795	ARG	-	expression tag	UNP Q8K424
B	796	GLY	-	expression tag	UNP Q8K424
B	797	SER	-	expression tag	UNP Q8K424
B	798	ALA	-	expression tag	UNP Q8K424
B	799	ALA	-	expression tag	UNP Q8K424
B	800	ALA	-	expression tag	UNP Q8K424
B	801	TRP	-	expression tag	UNP Q8K424
B	802	SER	-	expression tag	UNP Q8K424
B	803	HIS	-	expression tag	UNP Q8K424
B	804	PRO	-	expression tag	UNP Q8K424
B	805	GLN	-	expression tag	UNP Q8K424
B	806	PHE	-	expression tag	UNP Q8K424
B	807	GLU	-	expression tag	UNP Q8K424
B	808	LYS	-	expression tag	UNP Q8K424
C	2	GLY	ASN	conflict	UNP Q8K424
C	564	ALA	TYR	engineered mutation	UNP Q8K424
C	792	LEU	-	expression tag	UNP Q8K424
C	793	VAL	-	expression tag	UNP Q8K424
C	794	PRO	-	expression tag	UNP Q8K424
C	795	ARG	-	expression tag	UNP Q8K424
C	796	GLY	-	expression tag	UNP Q8K424
C	797	SER	-	expression tag	UNP Q8K424
C	798	ALA	-	expression tag	UNP Q8K424
C	799	ALA	-	expression tag	UNP Q8K424
C	800	ALA	-	expression tag	UNP Q8K424
C	801	TRP	-	expression tag	UNP Q8K424
C	802	SER	-	expression tag	UNP Q8K424
C	803	HIS	-	expression tag	UNP Q8K424
C	804	PRO	-	expression tag	UNP Q8K424
C	805	GLN	-	expression tag	UNP Q8K424
C	806	PHE	-	expression tag	UNP Q8K424
C	807	GLU	-	expression tag	UNP Q8K424
C	808	LYS	-	expression tag	UNP Q8K424
D	2	GLY	ASN	conflict	UNP Q8K424
D	564	ALA	TYR	engineered mutation	UNP Q8K424
D	792	LEU	-	expression tag	UNP Q8K424
D	793	VAL	-	expression tag	UNP Q8K424
D	794	PRO	-	expression tag	UNP Q8K424
D	795	ARG	-	expression tag	UNP Q8K424

Continued on next page...

Continued from previous page...

Chain	Residue	Modelled	Actual	Comment	Reference
D	796	GLY	-	expression tag	UNP Q8K424
D	797	SER	-	expression tag	UNP Q8K424
D	798	ALA	-	expression tag	UNP Q8K424
D	799	ALA	-	expression tag	UNP Q8K424
D	800	ALA	-	expression tag	UNP Q8K424
D	801	TRP	-	expression tag	UNP Q8K424
D	802	SER	-	expression tag	UNP Q8K424
D	803	HIS	-	expression tag	UNP Q8K424
D	804	PRO	-	expression tag	UNP Q8K424
D	805	GLN	-	expression tag	UNP Q8K424
D	806	PHE	-	expression tag	UNP Q8K424
D	807	GLU	-	expression tag	UNP Q8K424
D	808	LYS	-	expression tag	UNP Q8K424

- Molecule 2 is 7-methoxy-8-(3-methylbut-2-enyl)chromen-2-one (three-letter code: A00) (formula: C₁₅H₁₆O₃) (labeled as "Ligand of Interest" by depositor).

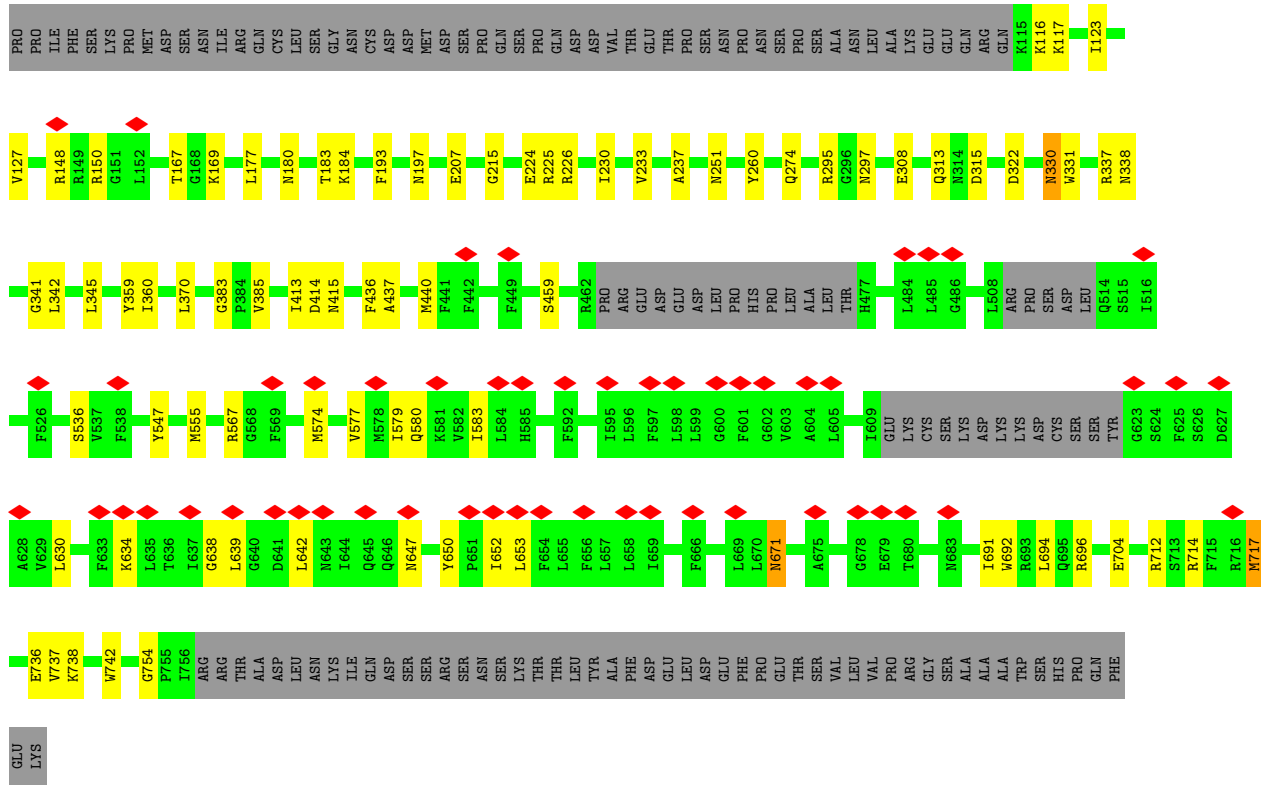


Mol	Chain	Residues	Atoms			AltConf
2	A	1	Total	C	O	0
			18	15	3	
2	A	1	Total	C	O	0
			18	15	3	
2	B	1	Total	C	O	0
			18	15	3	
2	B	1	Total	C	O	0
			18	15	3	

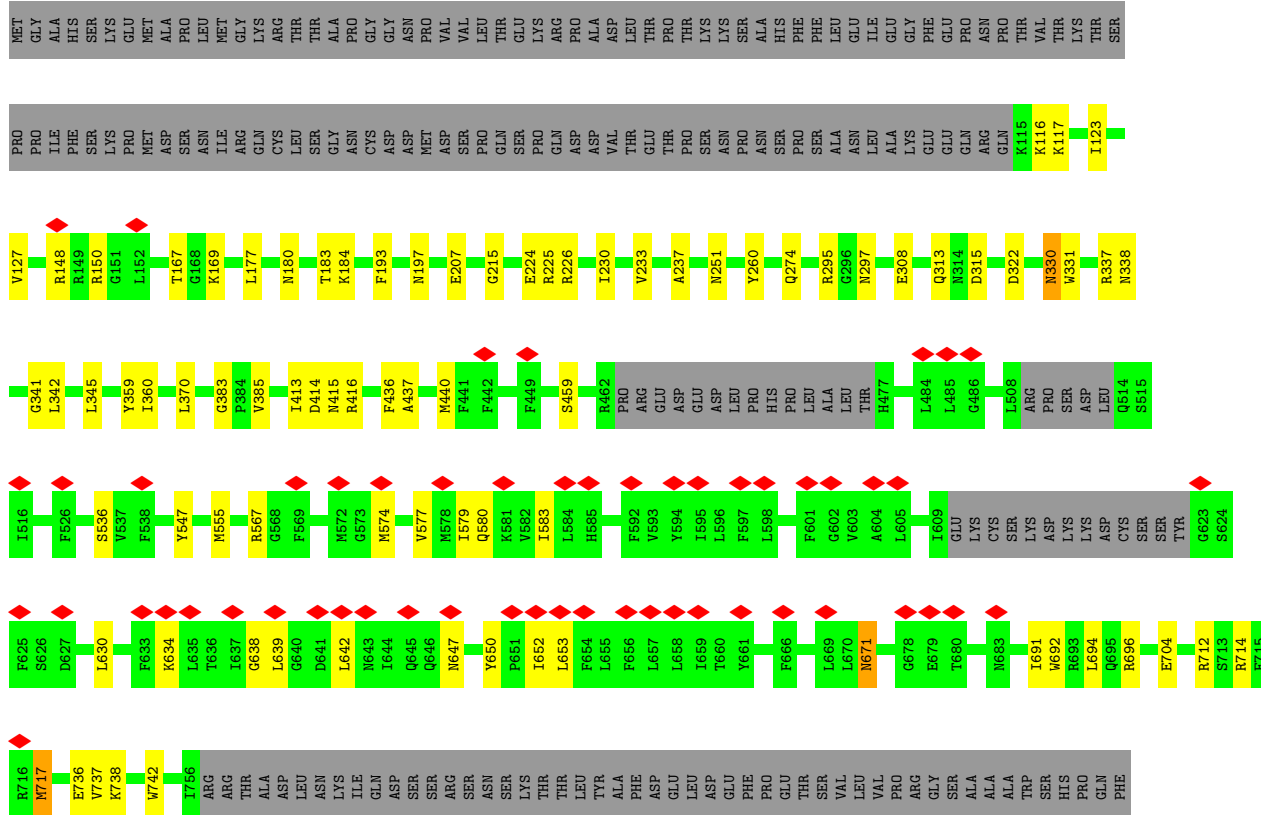
Continued on next page...

Continued from previous page...

Mol	Chain	Residues	Atoms			AltConf
2	C	1	Total	C	O	0
			18	15	3	
2	C	1	Total	C	O	0
			18	15	3	
2	D	1	Total	C	O	0
			18	15	3	
2	D	1	Total	C	O	0
			18	15	3	



● Molecule 1: Transient receptor potential cation channel subfamily V member 3



GLU
LYS

● Molecule 1: Transient receptor potential cation channel subfamily V member 3



MET
GLY
ALA
HIS
SER
LYS
GLU
MET
ALA
PRO
LEU
MET
GLY
LYS
ARG
THR
ALA
PRO
GLY
GLY
ASN
MET
VAL
VAL
SER
LEU
THR
GLU
LYS
ARG
GLN
CYS
SER
GLY
ASN
CYS
ASP
ASP
MET
PRO
ASP
VAL
SER
PRO
GLN
SER
GLU
PRO
GLN
ARG
ASP
ALA
ASP
THR
LEU
THR
THR
LYS
THR
PRO
THR
LYS
LYS
SER
ALA
HIS
PHE
PHE
LEU
LEU
ILE
GLY
PHE
GLY
GLU
PRO
ASN
THR
THR
VAL
THR
LYS
THR
SER

PRO
PRO
ILE
PHE
SER
LYS
PRO
MET
ASP
SER
ASN
ILE
ARG
GLN
CYS
LEU
SER
GLY
ASN
CYS
ASP
ASP
MET
GLN
ASP
ASP
VAL
THR
THR
PRO
SER
ASN
PRO
ASN
SER
SER
PRO
PHE
SER
ALA
ASN
LEU
ALA
LYS
LYS
PHE
GLU
GLU
GLN
ARG
GLN
THR
VAL
THR
LYS
THR
SER

V127
R148
R149
R150
G151
L152
D156
H160
T167
G168
K169
L177
N190
T183
K184
F193
N197
E207
G215
R224
R225
R226
I230
V233
A237
N251
Y260
Q274
R295
G296
N297
E308
Q313
N314
D315
D322
N330

W331
R337
N338
G341
L342
L345
Y359
I360
L370
G383
P384
V385
I413
D414
M415
F436
A437
M440
F441
F442
F449
F450
T454
S459
R462
PRO
ARG
GLU
ASP
ASP
LEU
PRO
HIS
PRO
LEU
ALA
LEU
THR
H477
R478
M479
S480
Q483
L484
L485

G486
L508
ARG
PRO
SER
ASP
LEU
Q514
S515
I516
F526
S536
V537
F538
Y547
M555
R567
G568
F569
M572
G573
M574
V577
M578
I579
Q580
K581
V582
I583
L584
H585
F592
V593
Y594
I595
L596
F597
L598
F601
G602
V603
A604
L605
A606
S607
L608
I609
GLU
LYS
CYS

SER
LYS
ASP
LYS
ASP
CYS
SER
SER
TYR
G623
S624
F625
S626
D627
L630
F633
K634
L635
T636
I637
G638
L639
G640
D641
L642
M643
I644
Q645
Q646
M647
Y650
P651
I652
L653
F654
L655
L656
L657
L658
I659
T660
Y661
F666
L669
L670
M671
G678
E679
T680
M683
I691

V692
R693
L694
Q695
R696
E704
R712
S713
R714
F715
R716
M717
E736
V737
K738
W742
I756
ARG
ARG
THR
ALA
ASP
LEU
ASN
LYS
ILE
GLN
ASP
SER
SER
ARG
ASN
SER
LYS
THR
THR
LEU
TYR
ALA
PHE
ASP
GLU
LEU
ASP
GLU
PHE
PRO
GLU
THR
SER
VAL
VAL
VAL
PRO

ARG
GLY
SER
ALA
ALA
ALA
TRP
SER
HIS
PRO
GLN
PHE
GLU
LYS

4 Experimental information

Property	Value	Source
EM reconstruction method	SINGLE PARTICLE	Depositor
Imposed symmetry	POINT, Not provided	
Number of particles used	63523	Depositor
Resolution determination method	FSC 0.143 CUT-OFF	Depositor
CTF correction method	NONE	Depositor
Microscope	FEI POLARA 300	Depositor
Voltage (kV)	300	Depositor
Electron dose ($e^-/\text{\AA}^2$)	96.5	Depositor
Minimum defocus (nm)	-1500	Depositor
Maximum defocus (nm)	-3500	Depositor
Magnification	Not provided	
Image detector	GATAN K3 (6k x 4k)	Depositor
Maximum map value	0.451	Depositor
Minimum map value	-0.235	Depositor
Average map value	0.003	Depositor
Map value standard deviation	0.021	Depositor
Recommended contour level	0.097	Depositor
Map size (\AA)	281.6, 281.6, 281.6	wwPDB
Map dimensions	256, 256, 256	wwPDB
Map angles ($^\circ$)	90.0, 90.0, 90.0	wwPDB
Pixel spacing (\AA)	1.1, 1.1, 1.1	Depositor

5 Model quality [i](#)

5.1 Standard geometry [i](#)

Bond lengths and bond angles in the following residue types are not validated in this section: A00

The Z score for a bond length (or angle) is the number of standard deviations the observed value is removed from the expected value. A bond length (or angle) with $|Z| > 5$ is considered an outlier worth inspection. RMSZ is the root-mean-square of all Z scores of the bond lengths (or angles).

Mol	Chain	Bond lengths		Bond angles	
		RMSZ	# Z >5	RMSZ	# Z >5
1	A	0.34	0/5068	0.55	1/6853 (0.0%)
1	B	0.34	0/5068	0.55	1/6853 (0.0%)
1	C	0.34	0/5068	0.56	1/6853 (0.0%)
1	D	0.34	0/5068	0.55	1/6853 (0.0%)
All	All	0.34	0/20272	0.55	4/27412 (0.0%)

Chiral center outliers are detected by calculating the chiral volume of a chiral center and verifying if the center is modelled as a planar moiety or with the opposite hand. A planarity outlier is detected by checking planarity of atoms in a peptide group, atoms in a mainchain group or atoms of a sidechain that are expected to be planar.

Mol	Chain	#Chirality outliers	#Planarity outliers
1	A	0	2
1	B	0	2
1	C	0	2
1	D	0	2
All	All	0	8

There are no bond length outliers.

All (4) bond angle outliers are listed below:

Mol	Chain	Res	Type	Atoms	Z	Observed(°)	Ideal(°)
1	B	315	ASP	CB-CG-OD1	7.47	125.03	118.30
1	C	315	ASP	CB-CG-OD1	7.45	125.01	118.30
1	A	315	ASP	CB-CG-OD1	7.43	124.98	118.30
1	D	315	ASP	CB-CG-OD1	7.37	124.93	118.30

There are no chirality outliers.

5 of 8 planarity outliers are listed below:

Mol	Chain	Res	Type	Group
1	A	414	ASP	Peptide
1	A	436	PHE	Peptide
1	B	414	ASP	Peptide
1	B	436	PHE	Peptide
1	C	414	ASP	Peptide

5.2 Too-close contacts [i](#)

In the following table, the Non-H and H(model) columns list the number of non-hydrogen atoms and hydrogen atoms in the chain respectively. The H(added) column lists the number of hydrogen atoms added and optimized by MolProbity. The Clashes column lists the number of clashes within the asymmetric unit, whereas Symm-Clashes lists symmetry-related clashes.

Mol	Chain	Non-H	H(model)	H(added)	Clashes	Symm-Clashes
1	A	4964	0	5053	46	0
1	B	4964	0	5053	44	0
1	C	4964	0	5053	44	0
1	D	4964	0	5053	47	0
2	A	36	0	0	0	0
2	B	36	0	0	0	0
2	C	36	0	0	0	0
2	D	36	0	0	0	0
All	All	20000	0	20212	164	0

The all-atom clashscore is defined as the number of clashes found per 1000 atoms (including hydrogen atoms). The all-atom clashscore for this structure is 4.

The worst 5 of 164 close contacts within the same asymmetric unit are listed below, sorted by their clash magnitude.

Atom-1	Atom-2	Interatomic distance (Å)	Clash overlap (Å)
1:A:226:ARG:HH12	1:B:742:TRP:HB3	1.57	0.70
1:D:692:TRP:HE1	1:D:696:ARG:HH21	1.42	0.68
1:C:692:TRP:HE1	1:C:696:ARG:HH21	1.42	0.68
1:B:692:TRP:HE1	1:B:696:ARG:HH21	1.42	0.67
1:A:692:TRP:HE1	1:A:696:ARG:HH21	1.42	0.66

There are no symmetry-related clashes.

5.3 Torsion angles [i](#)

5.3.1 Protein backbone [i](#)

In the following table, the Percentiles column shows the percent Ramachandran outliers of the chain as a percentile score with respect to all PDB entries followed by that with respect to all EM entries.

The Analysed column shows the number of residues for which the backbone conformation was analysed, and the total number of residues.

Mol	Chain	Analysed	Favoured	Allowed	Outliers	Percentiles	
1	A	602/808 (74%)	563 (94%)	38 (6%)	1 (0%)	47	79
1	B	602/808 (74%)	563 (94%)	38 (6%)	1 (0%)	47	79
1	C	602/808 (74%)	563 (94%)	38 (6%)	1 (0%)	47	79
1	D	602/808 (74%)	563 (94%)	38 (6%)	1 (0%)	47	79
All	All	2408/3232 (74%)	2252 (94%)	152 (6%)	4 (0%)	50	79

All (4) Ramachandran outliers are listed below:

Mol	Chain	Res	Type
1	B	413	ILE
1	C	413	ILE
1	D	413	ILE
1	A	413	ILE

5.3.2 Protein sidechains [i](#)

In the following table, the Percentiles column shows the percent sidechain outliers of the chain as a percentile score with respect to all PDB entries followed by that with respect to all EM entries.

The Analysed column shows the number of residues for which the sidechain conformation was analysed, and the total number of residues.

Mol	Chain	Analysed	Rotameric	Outliers	Percentiles	
1	A	540/719 (75%)	531 (98%)	9 (2%)	60	78
1	B	540/719 (75%)	531 (98%)	9 (2%)	60	78
1	C	540/719 (75%)	531 (98%)	9 (2%)	60	78
1	D	540/719 (75%)	531 (98%)	9 (2%)	60	78
All	All	2160/2876 (75%)	2124 (98%)	36 (2%)	62	78

5 of 36 residues with a non-rotameric sidechain are listed below:

Mol	Chain	Res	Type
1	D	117	LYS
1	D	717	MET
1	D	330	ASN
1	D	647	ASN
1	B	370	LEU

Sometimes sidechains can be flipped to improve hydrogen bonding and reduce clashes. 5 of 38 such sidechains are listed below:

Mol	Chain	Res	Type
1	D	160	HIS
1	D	483	GLN
1	D	197	ASN
1	D	330	ASN
1	D	735	ASN

5.3.3 RNA [i](#)

There are no RNA molecules in this entry.

5.4 Non-standard residues in protein, DNA, RNA chains [i](#)

There are no non-standard protein/DNA/RNA residues in this entry.

5.5 Carbohydrates [i](#)

There are no monosaccharides in this entry.

5.6 Ligand geometry [i](#)

8 ligands are modelled in this entry.

In the following table, the Counts columns list the number of bonds (or angles) for which Mogul statistics could be retrieved, the number of bonds (or angles) that are observed in the model and the number of bonds (or angles) that are defined in the Chemical Component Dictionary. The Link column lists molecule types, if any, to which the group is linked. The Z score for a bond length (or angle) is the number of standard deviations the observed value is removed from the expected value. A bond length (or angle) with $|Z| > 2$ is considered an outlier worth inspection. RMSZ is the root-mean-square of all Z scores of the bond lengths (or angles).

Mol	Type	Chain	Res	Link	Bond lengths			Bond angles		
					Counts	RMSZ	# Z > 2	Counts	RMSZ	# Z > 2
2	A0O	D	902	-	19,19,19	4.79	12 (63%)	26,26,26	7.16	18 (69%)
2	A0O	B	901	-	19,19,19	4.88	12 (63%)	26,26,26	6.95	19 (73%)
2	A0O	A	901	-	19,19,19	4.90	12 (63%)	26,26,26	6.96	19 (73%)
2	A0O	D	901	-	19,19,19	4.89	12 (63%)	26,26,26	6.94	19 (73%)
2	A0O	C	902	-	19,19,19	4.81	12 (63%)	26,26,26	7.19	17 (65%)
2	A0O	A	902	-	19,19,19	4.74	12 (63%)	26,26,26	7.12	17 (65%)
2	A0O	B	902	-	19,19,19	4.78	11 (57%)	26,26,26	7.14	18 (69%)
2	A0O	C	901	-	19,19,19	4.89	12 (63%)	26,26,26	6.89	19 (73%)

In the following table, the Chirals column lists the number of chiral outliers, the number of chiral centers analysed, the number of these observed in the model and the number defined in the Chemical Component Dictionary. Similar counts are reported in the Torsion and Rings columns. '-' means no outliers of that kind were identified.

Mol	Type	Chain	Res	Link	Chirals	Torsions	Rings
2	A0O	D	902	-	-	2/7/7/7	0/2/2/2
2	A0O	B	901	-	-	2/7/7/7	0/2/2/2
2	A0O	A	901	-	-	2/7/7/7	0/2/2/2
2	A0O	D	901	-	-	2/7/7/7	0/2/2/2
2	A0O	C	902	-	-	3/7/7/7	0/2/2/2
2	A0O	A	902	-	-	2/7/7/7	0/2/2/2
2	A0O	B	902	-	-	2/7/7/7	0/2/2/2
2	A0O	C	901	-	-	2/7/7/7	0/2/2/2

The worst 5 of 95 bond length outliers are listed below:

Mol	Chain	Res	Type	Atoms	Z	Observed(Å)	Ideal(Å)
2	B	901	A0O	C06-C04	10.13	1.56	1.39
2	A	901	A0O	C06-C04	10.13	1.56	1.39
2	C	901	A0O	C06-C04	10.09	1.56	1.39
2	D	901	A0O	C06-C04	10.07	1.56	1.39
2	C	902	A0O	C06-C04	9.97	1.55	1.39

The worst 5 of 146 bond angle outliers are listed below:

Mol	Chain	Res	Type	Atoms	Z	Observed(°)	Ideal(°)
2	A	902	A0O	O01-C06-C04	25.21	144.57	115.96
2	C	902	A0O	O01-C06-C04	25.20	144.56	115.96

Continued on next page...

Continued from previous page...

Mol	Chain	Res	Type	Atoms	Z	Observed(°)	Ideal(°)
2	B	902	A00	O01-C06-C04	25.10	144.44	115.96
2	D	902	A00	O01-C06-C04	25.09	144.43	115.96
2	A	901	A00	O01-C06-C04	24.94	144.26	115.96

There are no chirality outliers.

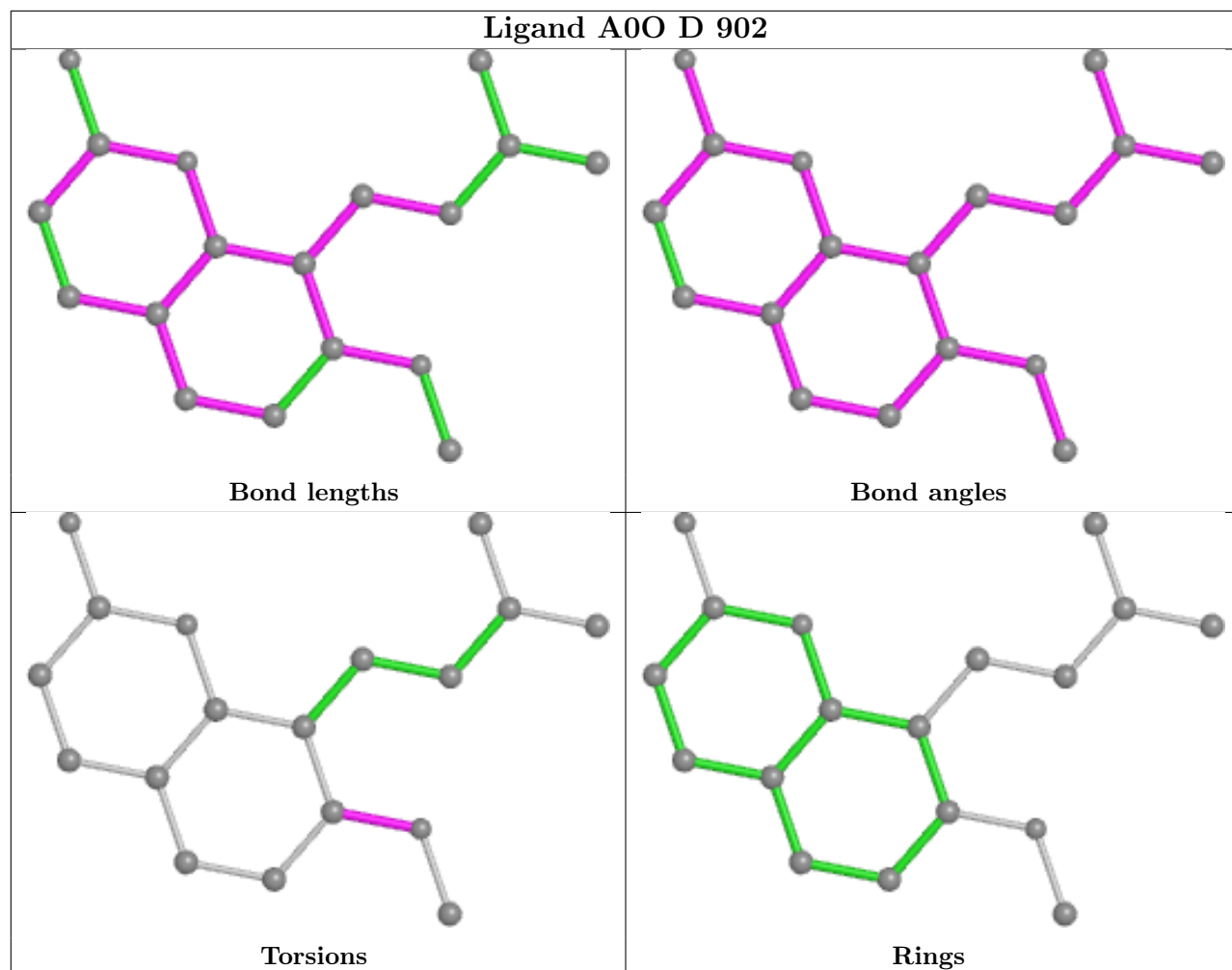
5 of 17 torsion outliers are listed below:

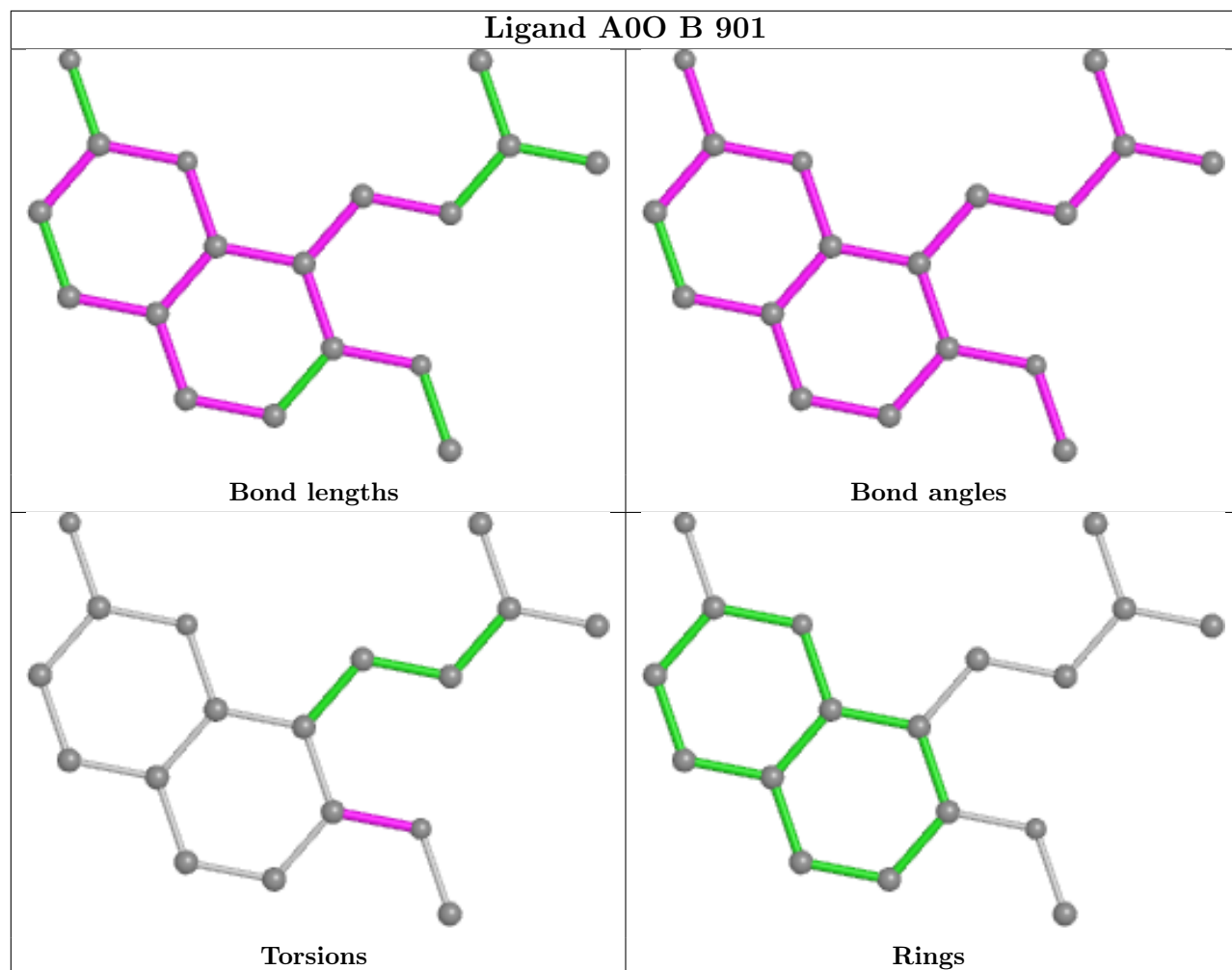
Mol	Chain	Res	Type	Atoms
2	A	902	A00	C11-C08-O02-C18
2	B	902	A00	C11-C08-O02-C18
2	C	902	A00	C11-C08-O02-C18
2	D	902	A00	C11-C08-O02-C18
2	B	902	A00	C04-C08-O02-C18

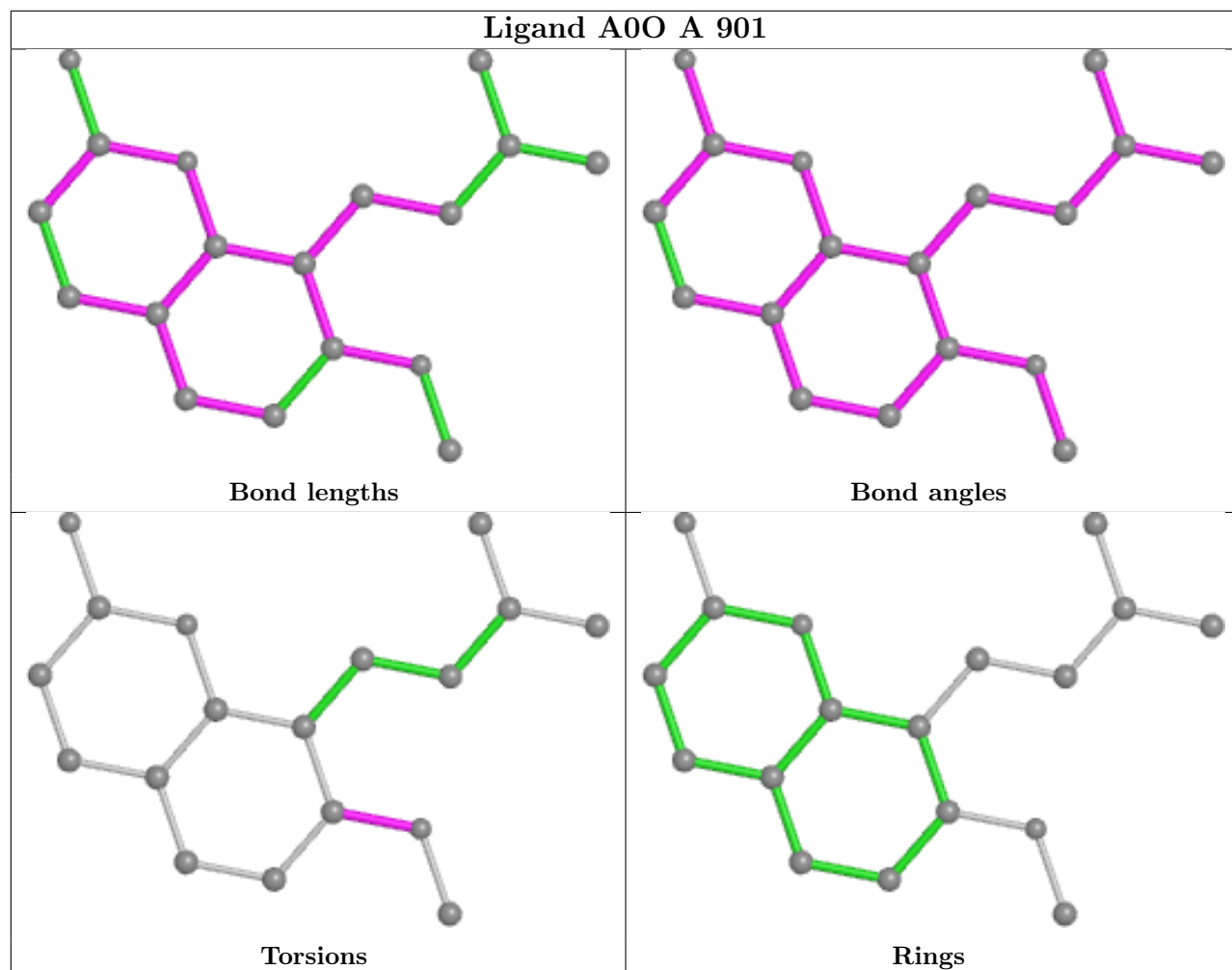
There are no ring outliers.

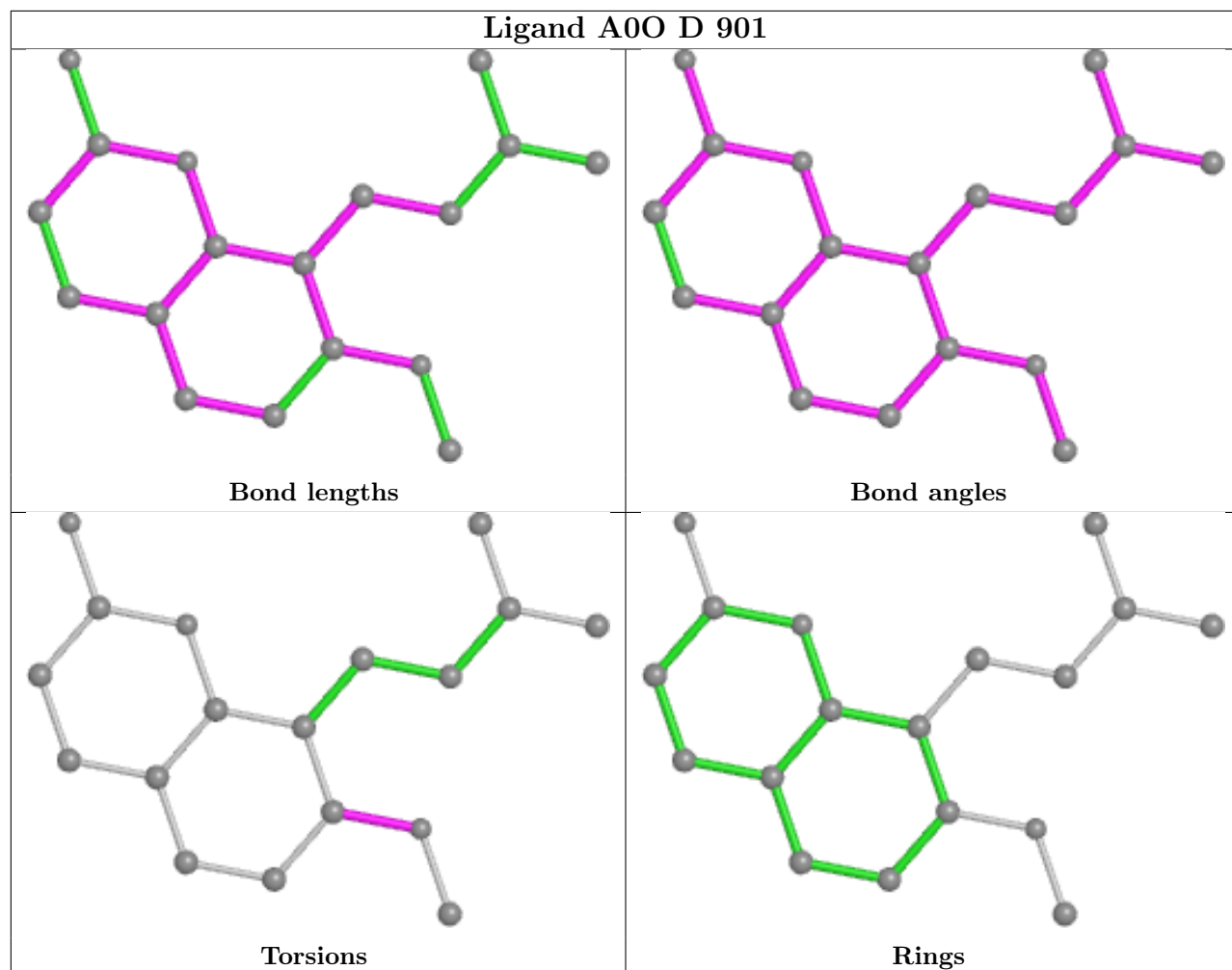
No monomer is involved in short contacts.

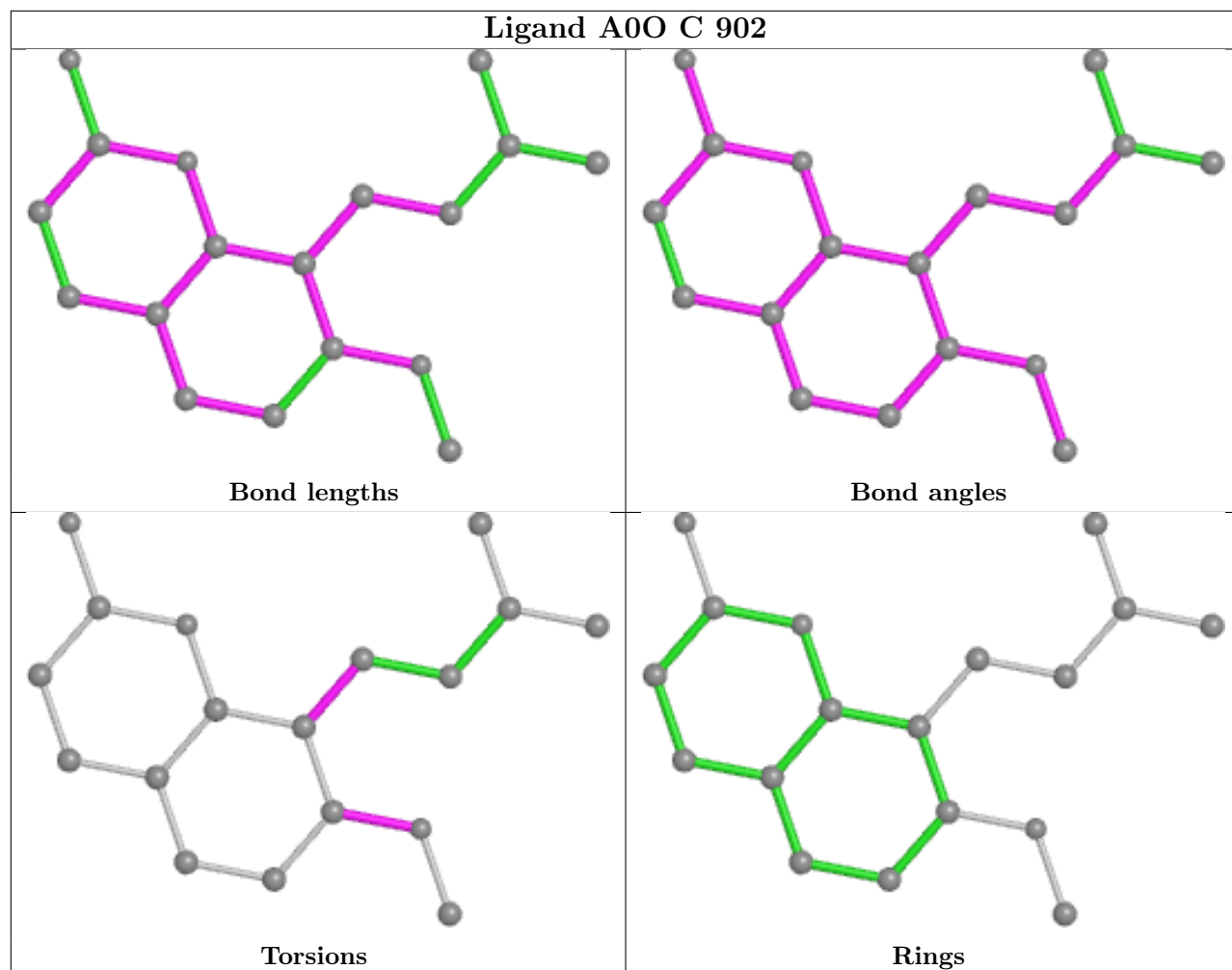
The following is a two-dimensional graphical depiction of Mogul quality analysis of bond lengths, bond angles, torsion angles, and ring geometry for all instances of the Ligand of Interest. In addition, ligands with molecular weight > 250 and outliers as shown on the validation Tables will also be included. For torsion angles, if less than 5% of the Mogul distribution of torsion angles is within 10 degrees of the torsion angle in question, then that torsion angle is considered an outlier. Any bond that is central to one or more torsion angles identified as an outlier by Mogul will be highlighted in the graph. For rings, the root-mean-square deviation (RMSD) between the ring in question and similar rings identified by Mogul is calculated over all ring torsion angles. If the average RMSD is greater than 60 degrees and the minimal RMSD between the ring in question and any Mogul-identified rings is also greater than 60 degrees, then that ring is considered an outlier. The outliers are highlighted in purple. The color gray indicates Mogul did not find sufficient equivalents in the CSD to analyse the geometry.

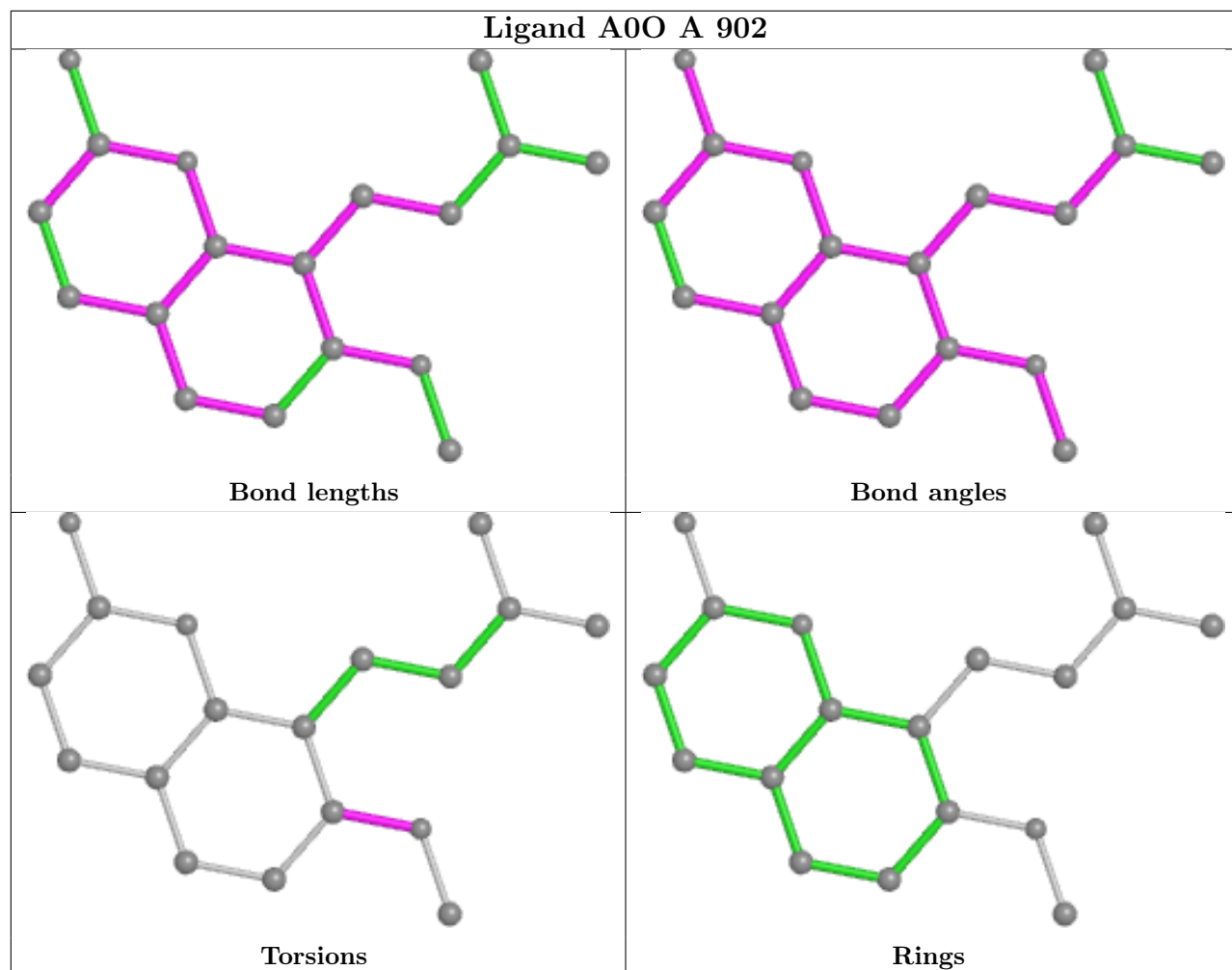


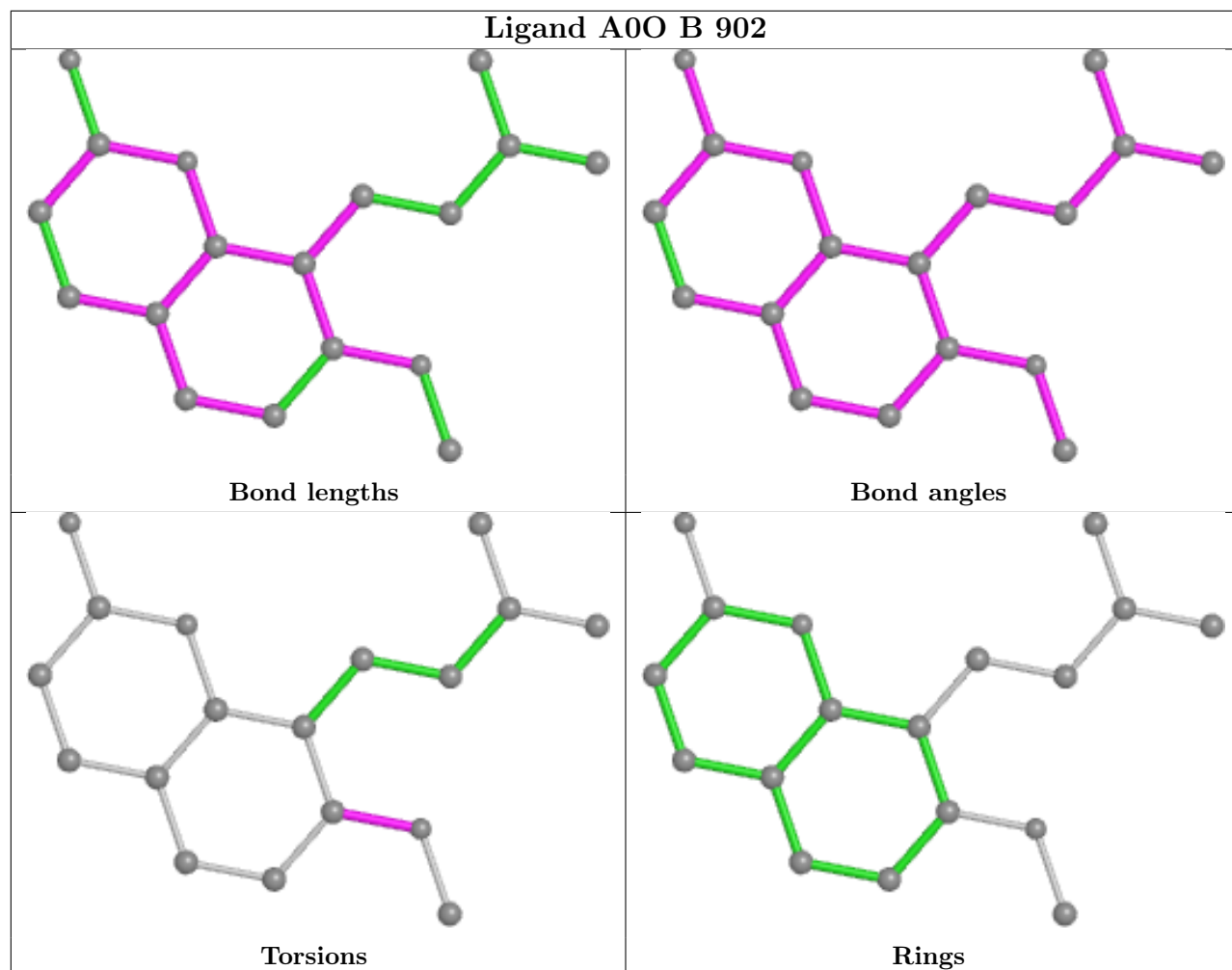


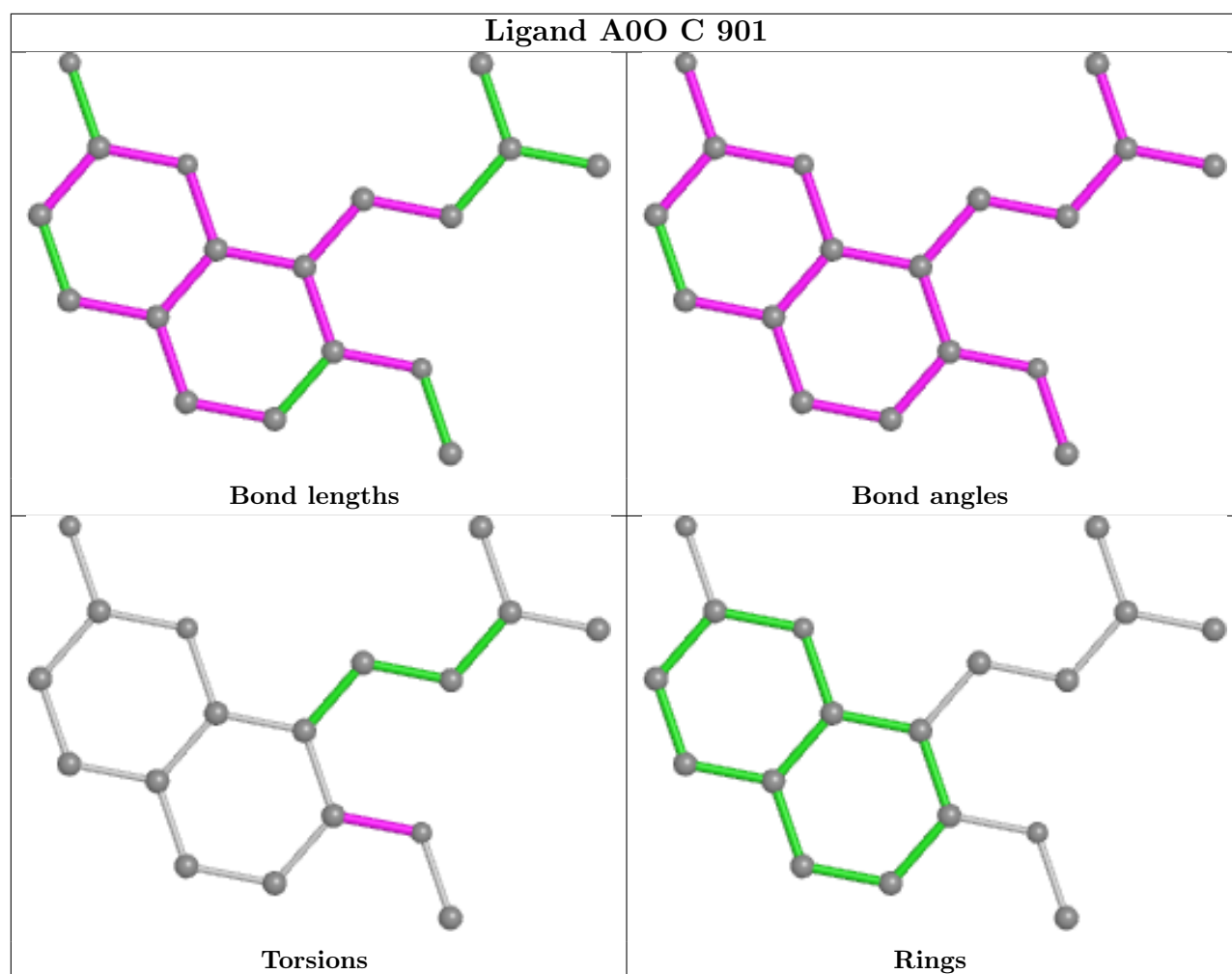












5.7 Other polymers [i](#)

There are no such residues in this entry.

5.8 Polymer linkage issues [i](#)

There are no chain breaks in this entry.

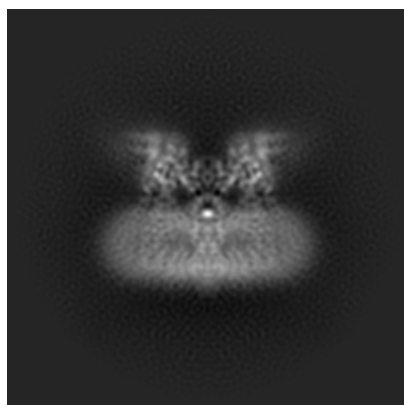
6 Map visualisation [i](#)

This section contains visualisations of the EMDB entry EMD-24386. These allow visual inspection of the internal detail of the map and identification of artifacts.

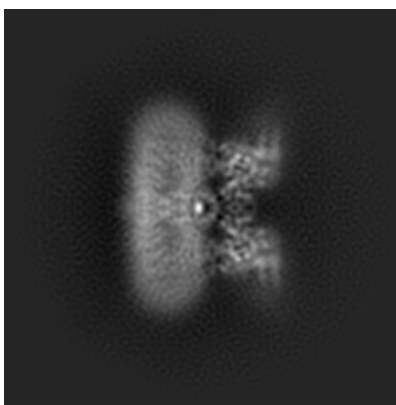
No raw map or half-maps were deposited for this entry and therefore no images, graphs, etc. pertaining to the raw map can be shown.

6.1 Orthogonal projections [i](#)

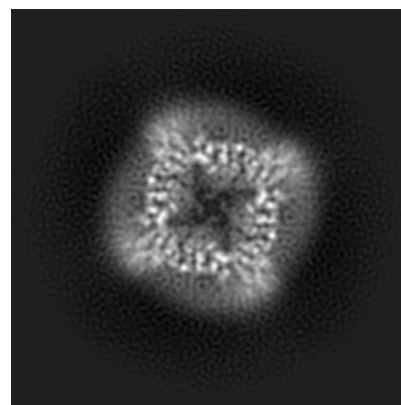
6.1.1 Primary map



X



Y

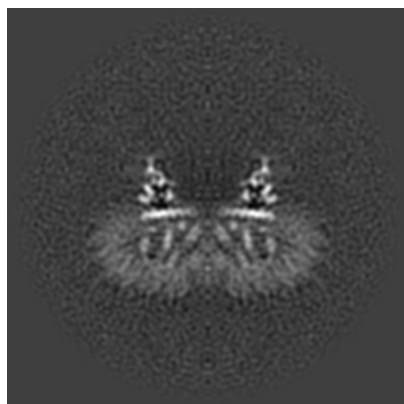


Z

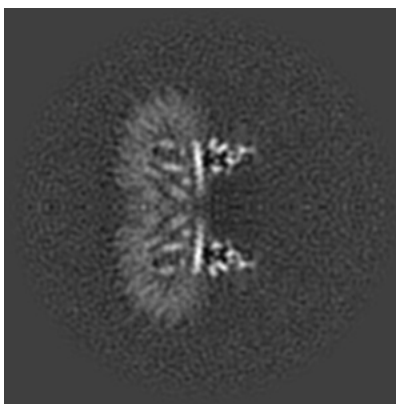
The images above show the map projected in three orthogonal directions.

6.2 Central slices [i](#)

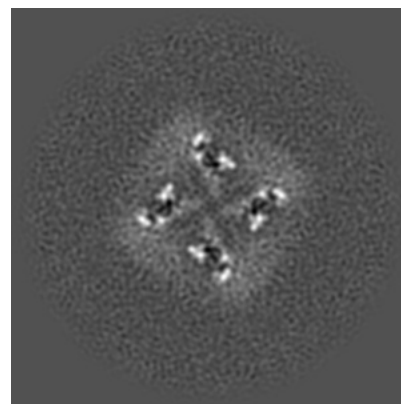
6.2.1 Primary map



X Index: 128



Y Index: 128

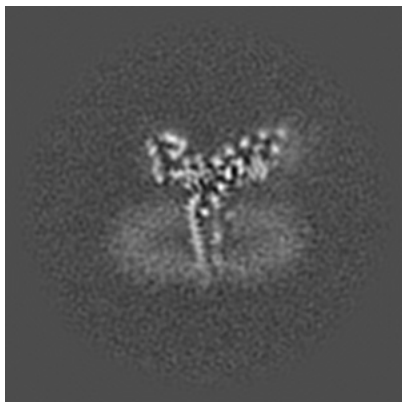


Z Index: 128

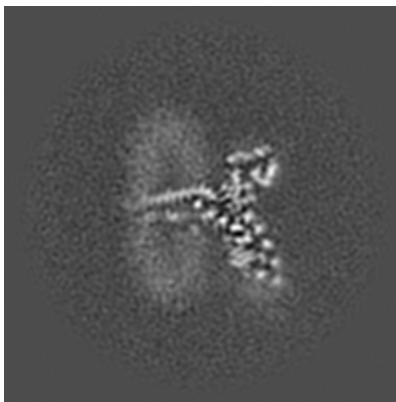
The images above show central slices of the map in three orthogonal directions.

6.3 Largest variance slices [\(i\)](#)

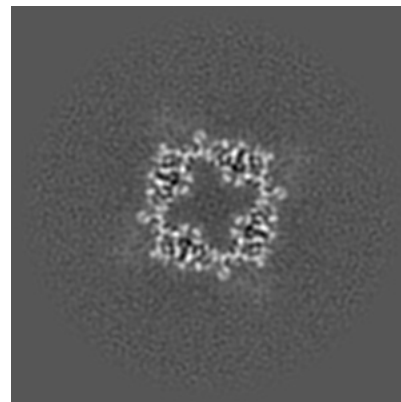
6.3.1 Primary map



X Index: 96



Y Index: 96

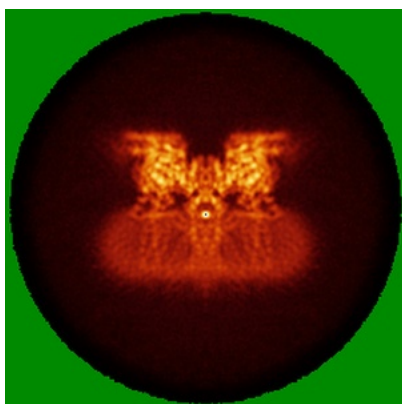


Z Index: 149

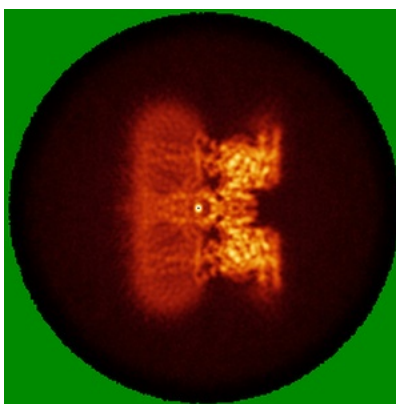
The images above show the largest variance slices of the map in three orthogonal directions.

6.4 Orthogonal standard-deviation projections (False-color) [\(i\)](#)

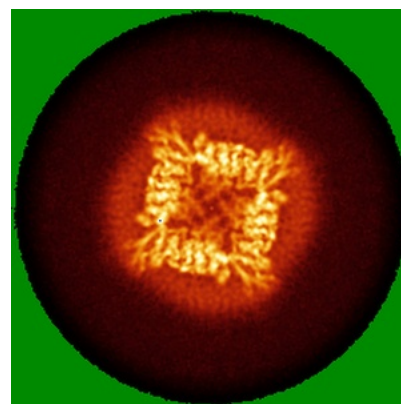
6.4.1 Primary map



X



Y

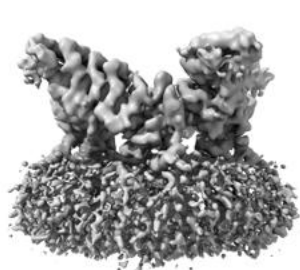


Z

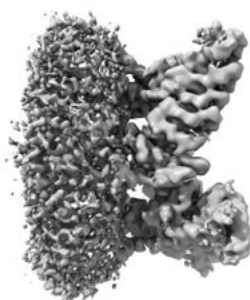
The images above show the map standard deviation projections with false color in three orthogonal directions. Minimum values are shown in green, max in blue, and dark to light orange shades represent small to large values respectively.

6.5 Orthogonal surface views [i](#)

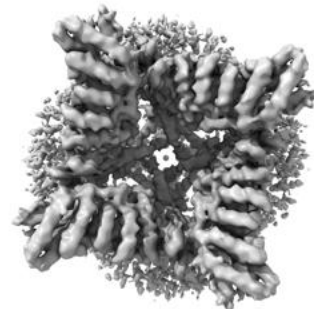
6.5.1 Primary map



X



Y



Z

The images above show the 3D surface view of the map at the recommended contour level 0.097. These images, in conjunction with the slice images, may facilitate assessment of whether an appropriate contour level has been provided.

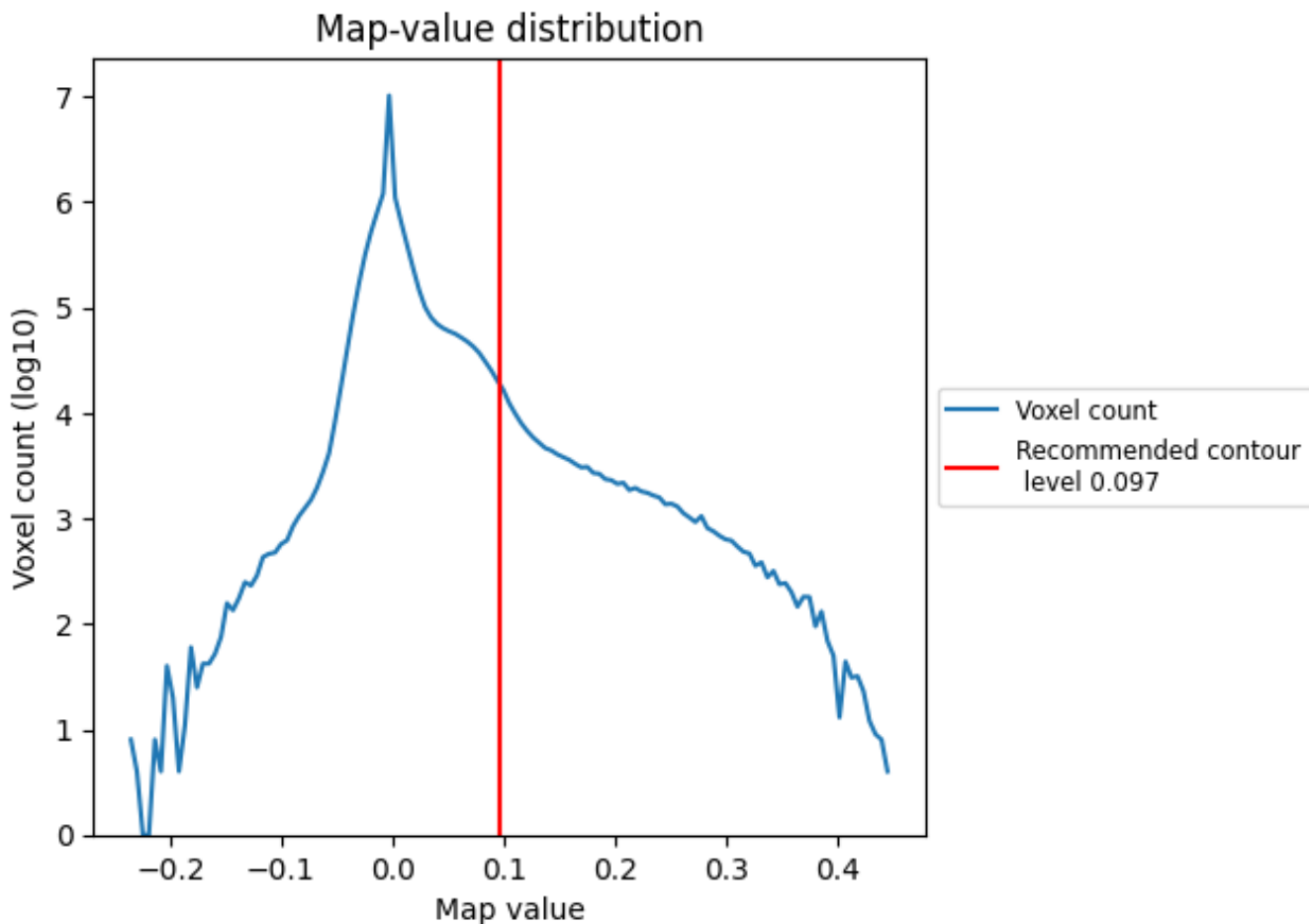
6.6 Mask visualisation [i](#)

This section was not generated. No masks/segmentation were deposited.

7 Map analysis [i](#)

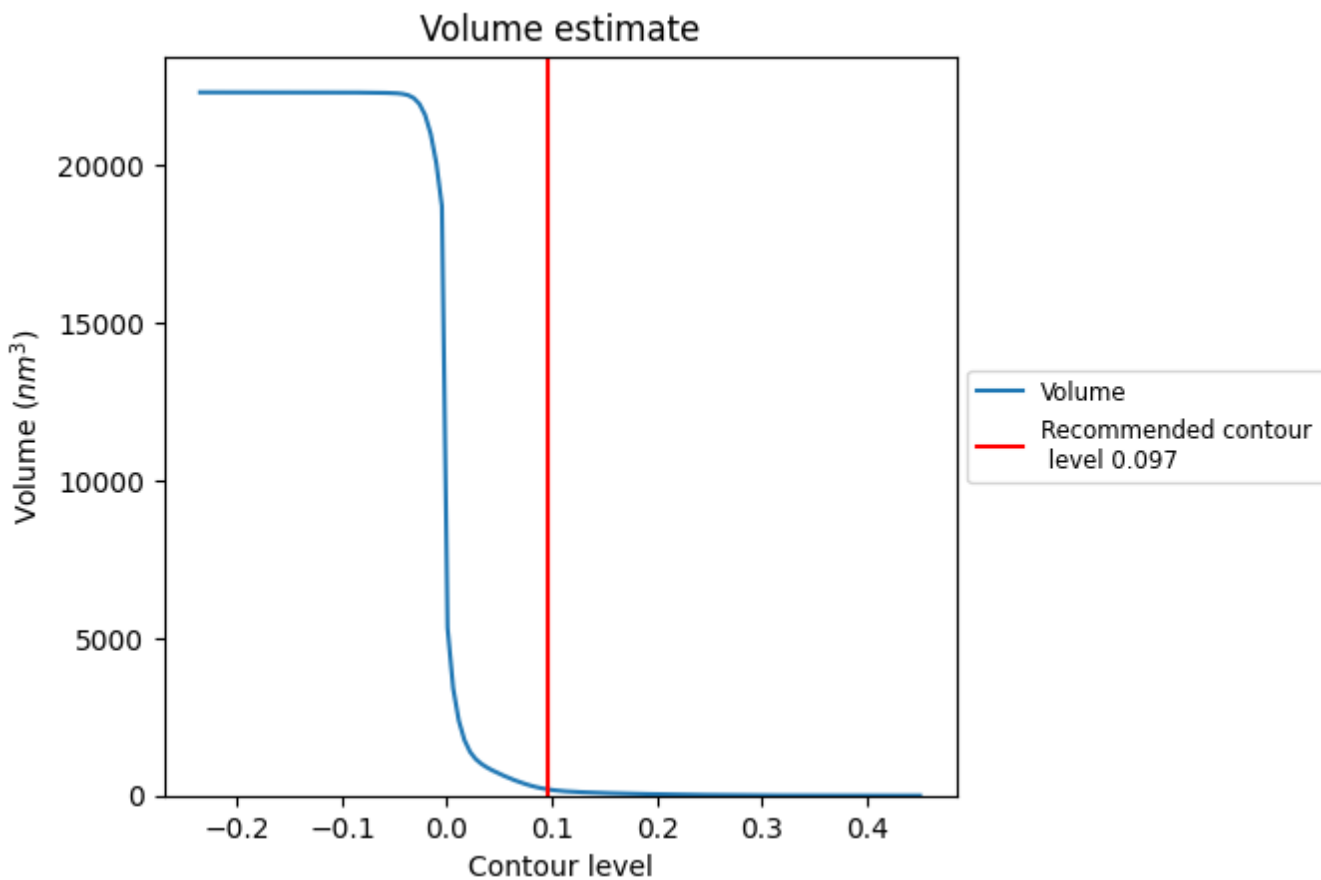
This section contains the results of statistical analysis of the map.

7.1 Map-value distribution [i](#)



The map-value distribution is plotted in 128 intervals along the x-axis. The y-axis is logarithmic. A spike in this graph at zero usually indicates that the volume has been masked.

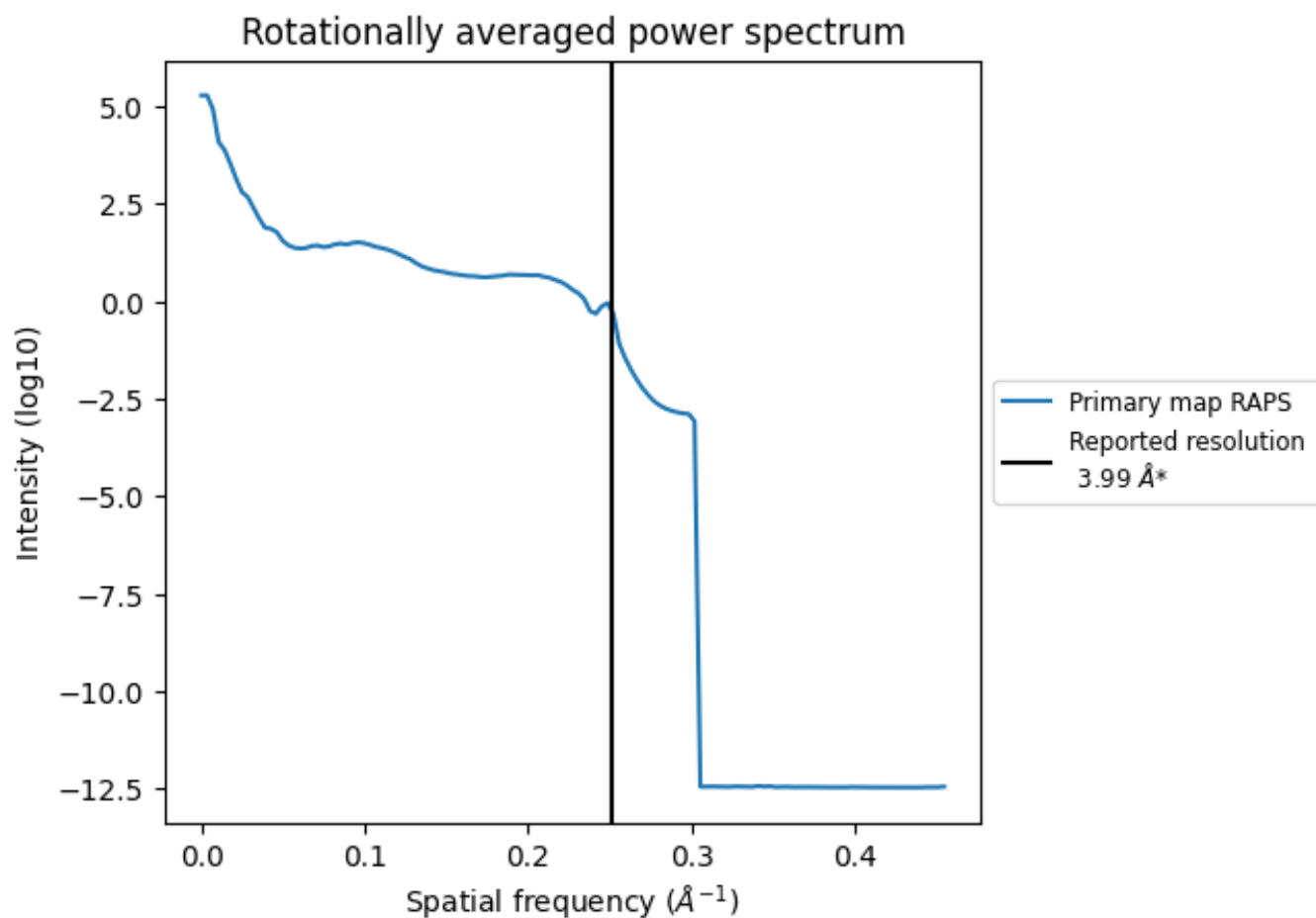
7.2 Volume estimate [\(i\)](#)



The volume at the recommended contour level is 194 nm³; this corresponds to an approximate mass of 175 kDa.

The volume estimate graph shows how the enclosed volume varies with the contour level. The recommended contour level is shown as a vertical line and the intersection between the line and the curve gives the volume of the enclosed surface at the given level.

7.3 Rotationally averaged power spectrum [i](#)



*Reported resolution corresponds to spatial frequency of 0.251 Å⁻¹

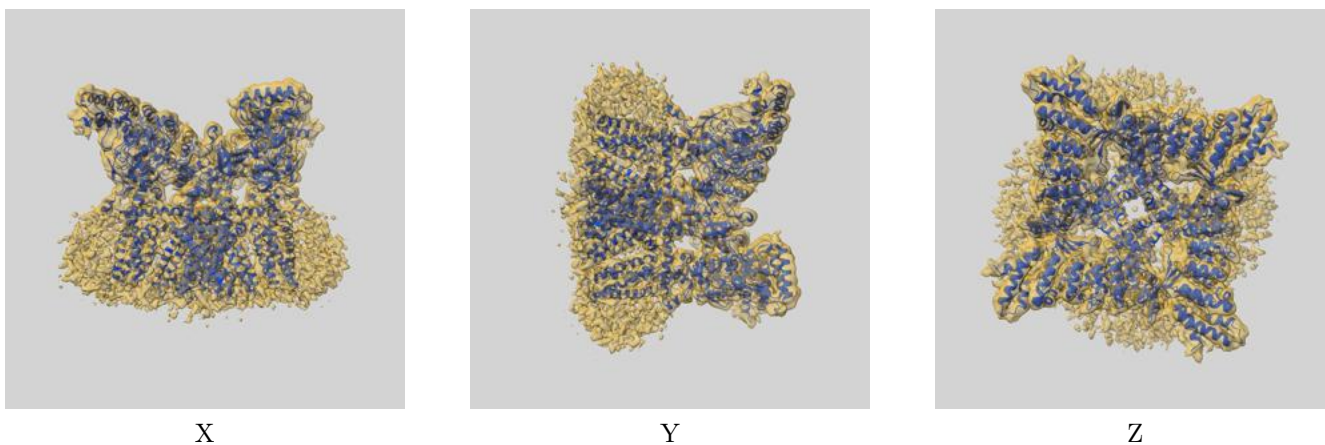
8 Fourier-Shell correlation

This section was not generated. No FSC curve or half-maps provided.

9 Map-model fit [i](#)

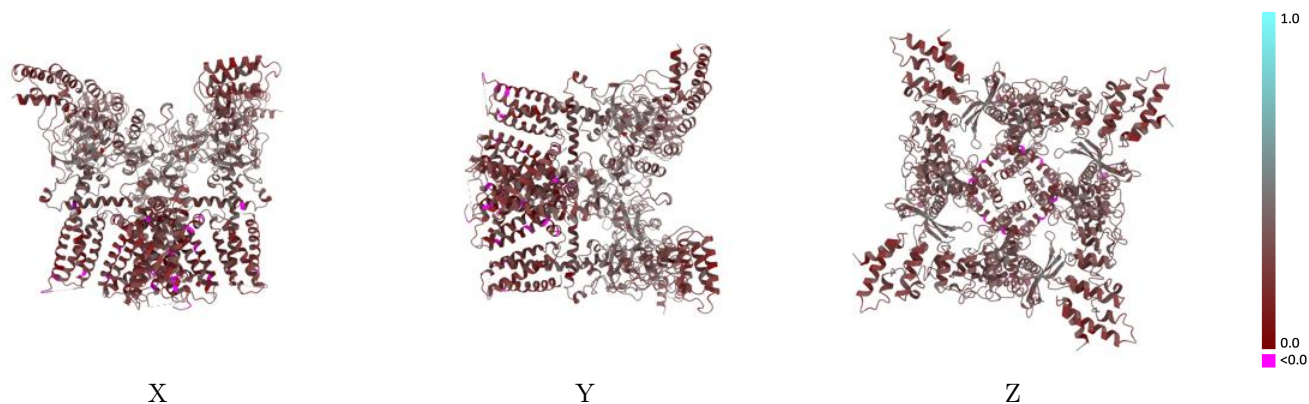
This section contains information regarding the fit between EMDB map EMD-24386 and PDB model 7RAU. Per-residue inclusion information can be found in section 3 on page 8.

9.1 Map-model overlay [i](#)



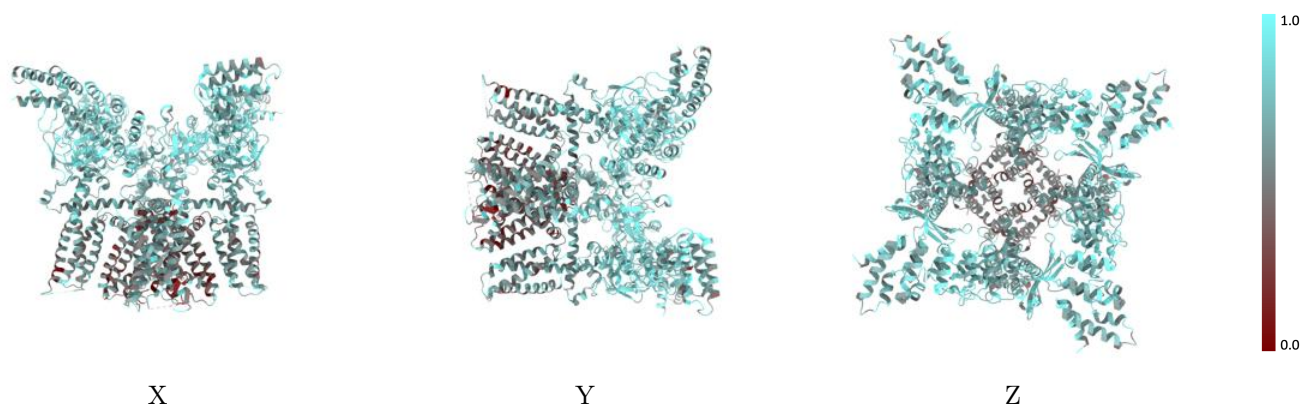
The images above show the 3D surface view of the map at the recommended contour level 0.097 at 50% transparency in yellow overlaid with a ribbon representation of the model coloured in blue. These images allow for the visual assessment of the quality of fit between the atomic model and the map.

9.2 Q-score mapped to coordinate model [i](#)



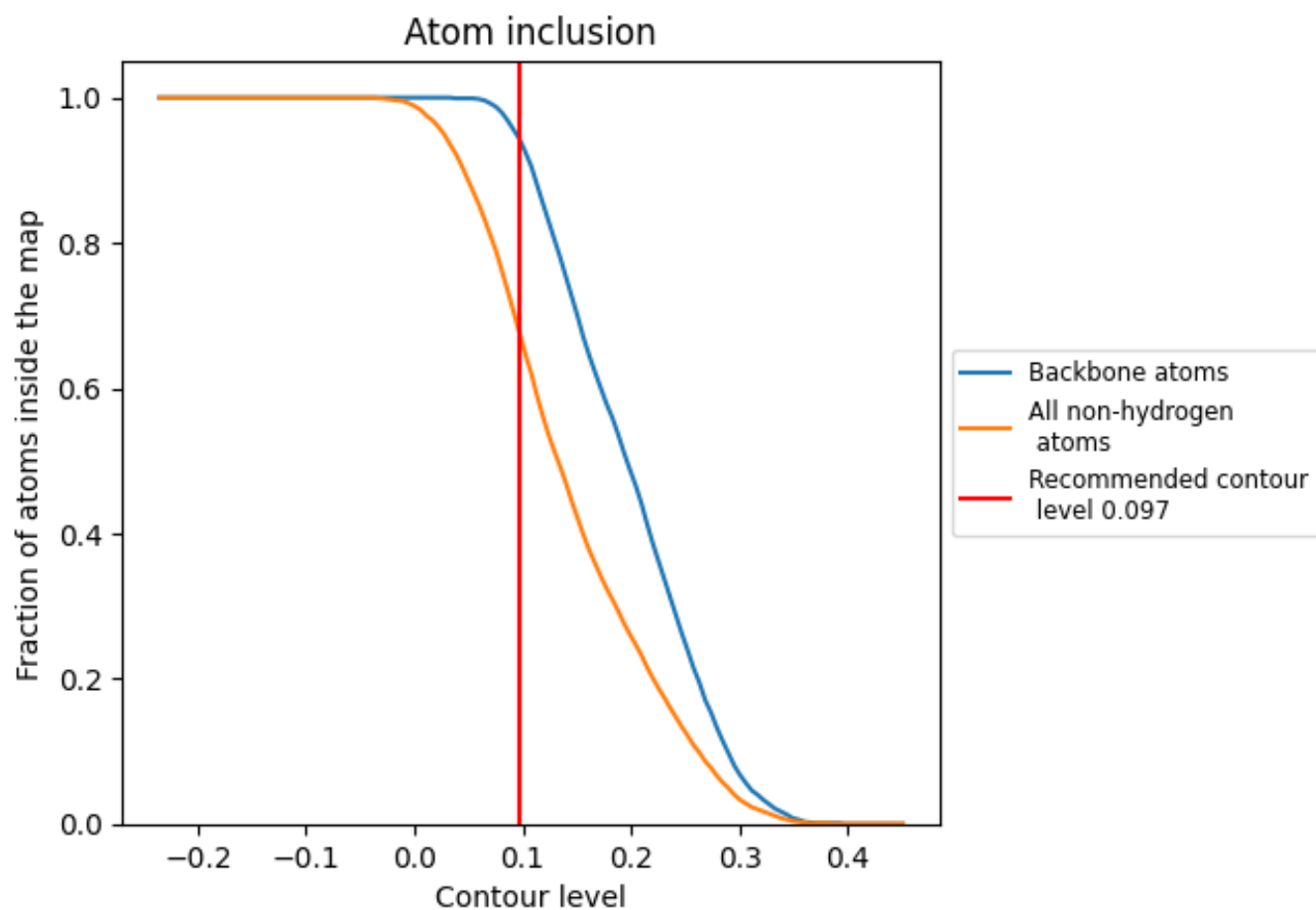
The images above show the model with each residue coloured according to its Q-score. This shows their resolvability in the map with higher Q-score values reflecting better resolvability. Please note: Q-score is calculating the resolvability of atoms, and thus high values are only expected at resolutions at which atoms can be resolved. Low Q-score values may therefore be expected for many entries.

9.3 Atom inclusion mapped to coordinate model [i](#)



The images above show the model with each residue coloured according to its atom inclusion. This shows to what extent they are inside the map at the recommended contour level (0.097).






9.4 Atom inclusion [i](#)



At the recommended contour level, 94% of all backbone atoms, 68% of all non-hydrogen atoms, are inside the map.

9.5 Map-model fit summary [i](#)

The table lists the average atom inclusion at the recommended contour level (0.097) and Q-score for the entire model and for each chain.

Chain	Atom inclusion	Q-score
All	 0.6760	 0.2980
A	 0.6760	 0.2990
B	 0.6770	 0.2980
C	 0.6740	 0.2990
D	 0.6760	 0.2970

