



Full wwPDB X-ray Structure Validation Report ⓘ

Mar 23, 2023 – 06:21 pm GMT

PDB ID : 7ZBE
Title : Dark state crystal structure of bovine rhodopsin in Lipidic Cubic Phase (Swiss-FEL)
Authors : Gruhl, T.; Weinert, T.; Rodrigues, M.J.; Milne, C.; Ortolani, G.; Nass, K.; Nango, E.; Sen, S.; Johnson, P.; Cirelli, C.; Furrer, A.; Mous, S.; Skopintsev, P.; James, D.; Dworkowski, F.; Baath, P.; Kekilli, D.; Oserov, D.; Tanaka, R.; Glover, H.; Bacellar, C.; Bruenle, S.; Casadei, C.; Diethelm, A.; Gashi, D.; Gotthard, G.; Guixa-Gonzalez, R.; Joti, Y.; Kabanova, V.; Knopp, G.; Lesca, E.; Ma, P.; Martiel, I.; Muehle, J.; Owada, S.; Pamula, F.; Sarabi, D.; Tejero, O.; Tsai, C.J.; Varma, N.; Wach, A.; Boutet, S.; Tono, K.; Nogly, P.; Deupi, X.; Iwata, S.; Neutze, R.; Standfuss, J.; Schertler, G.F.X.; Panneels, V.
Deposited on : 2022-03-23
Resolution : 1.80 Å(reported)

This is a Full wwPDB X-ray Structure Validation Report for a publicly released PDB entry.

We welcome your comments at validation@mail.wwpdb.org

A user guide is available at

<https://www.wwpdb.org/validation/2017/XrayValidationReportHelp>

with specific help available everywhere you see the ⓘ symbol.

The types of validation reports are described at

<http://www.wwpdb.org/validation/2017/FAQs#types>.

The following versions of software and data (see [references ⓘ](#)) were used in the production of this report:

MolProbity : 4.02b-467
Mogul : 1.8.4, CSD as541be (2020)
Xtriage (Phenix) : 1.13
EDS : 2.32.1

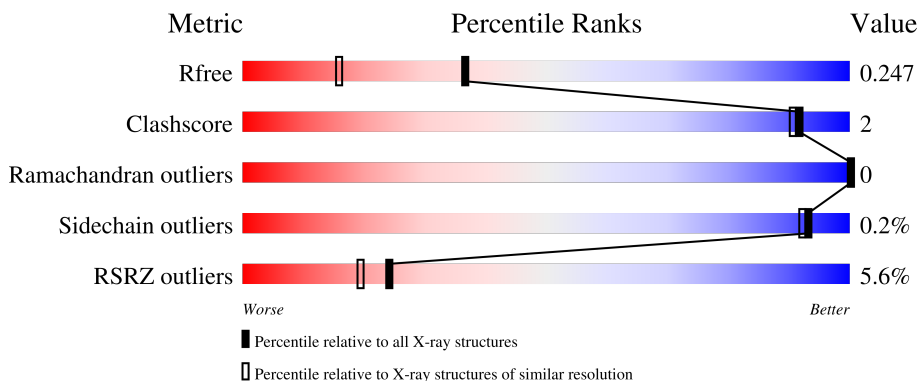
1 Overall quality at a glance

The following experimental techniques were used to determine the structure:

X-RAY DIFFRACTION

The reported resolution of this entry is 1.80 Å.

Percentile scores (ranging between 0-100) for global validation metrics of the entry are shown in the following graphic. The table shows the number of entries on which the scores are based.



Metric	Whole archive (#Entries)	Similar resolution (#Entries, resolution range(Å))
R_{free}	130704	5950 (1.80-1.80)
Clashscore	141614	6793 (1.80-1.80)
Ramachandran outliers	138981	6697 (1.80-1.80)
Sidechain outliers	138945	6696 (1.80-1.80)
RSRZ outliers	127900	5850 (1.80-1.80)

The table below summarises the geometric issues observed across the polymeric chains and their fit to the electron density. The red, orange, yellow and green segments of the lower bar indicate the fraction of residues that contain outliers for ≥ 3 , 2, 1 and 0 types of geometric quality criteria respectively. A grey segment represents the fraction of residues that are not modelled. The numeric value for each fraction is indicated below the corresponding segment, with a dot representing fractions $\leq 5\%$. The upper red bar (where present) indicates the fraction of residues that have poor fit to the electron density. The numeric value is given above the bar.

Mol	Chain	Length	Quality of chain
1	A	348	

Continued on next page...

buster-report : 1.1.7 (2018)
 Percentile statistics : 20191225.v01 (using entries in the PDB archive December 25th 2019)
 Refmac : 5.8.0158
 CCP4 : 7.0.044 (Gargrove)
 Ideal geometry (proteins) : Engh & Huber (2001)
 Ideal geometry (DNA, RNA) : Parkinson et al. (1996)
 Validation Pipeline (wwPDB-VP) : 2.32.1

Continued from previous page...

Mol	Chain	Length	Quality of chain
1	B	348	<p>4% 84% 13%</p>
2	C	2	<p>100%</p>
2	D	2	<p>100%</p>

The following table lists non-polymeric compounds, carbohydrate monomers and non-standard residues in protein, DNA, RNA chains that are outliers for geometric or electron-density-fit criteria:

Mol	Type	Chain	Res	Chirality	Geometry	Clashes	Electron density
3	ACE	A	401	-	-	-	X

2 Entry composition [i](#)

There are 9 unique types of molecules in this entry. The entry contains 5497 atoms, of which 0 are hydrogens and 0 are deuteriums.

In the tables below, the ZeroOcc column contains the number of atoms modelled with zero occupancy, the AltConf column contains the number of residues with at least one atom in alternate conformation and the Trace column contains the number of residues modelled with at most 2 atoms.

- Molecule 1 is a protein called Rhodopsin.

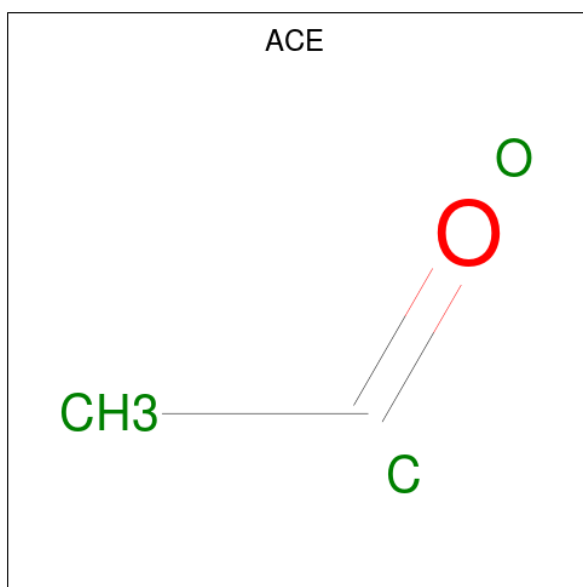
Mol	Chain	Residues	Atoms					ZeroOcc	AltConf	Trace
			Total	C	N	O	S			
1	A	304	2487	1669	377	418	23	0	11	0
1	B	304	2484	1668	373	418	25	0	11	0

- Molecule 2 is an oligosaccharide called 2-acetamido-2-deoxy-beta-D-glucopyranose-(1-4)-2-acetamido-2-deoxy-beta-D-glucopyranose.



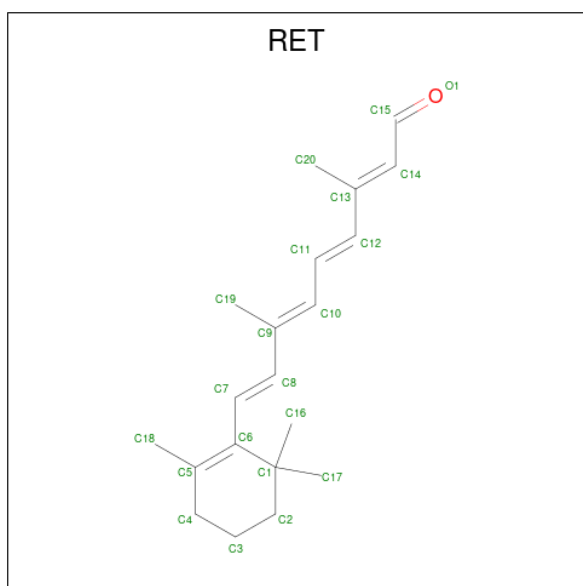
Mol	Chain	Residues	Atoms				ZeroOcc	AltConf	Trace
			Total	C	N	O			
2	C	2	28	16	2	10	0	0	0
2	D	2	28	16	2	10	0	0	0

- Molecule 3 is ACETYL GROUP (three-letter code: ACE) (formula: C₂H₄O).



Mol	Chain	Residues	Atoms		ZeroOcc	AltConf	
3	A	1	Total	C	O	0	0
			3	2	1		
3	B	1	Total	C	O	0	0
			3	2	1		

- Molecule 4 is RETINAL (three-letter code: RET) (formula: $C_{20}H_{28}O$) (labeled as "Ligand of Interest" by depositor).



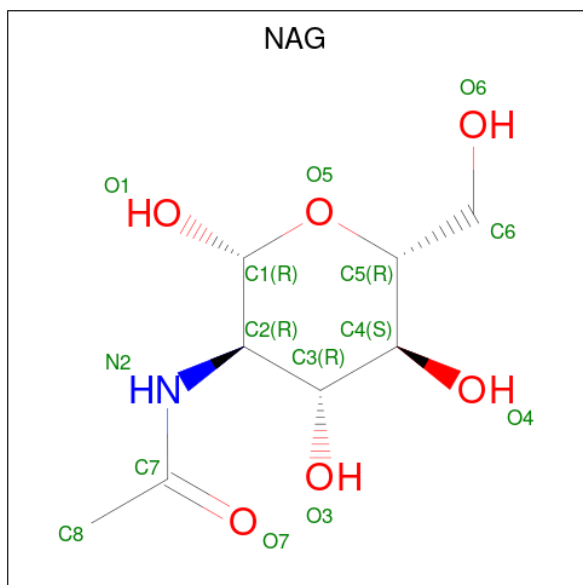
Mol	Chain	Residues	Atoms		ZeroOcc	AltConf	
4	A	1	Total	C		0	0
			20	20			

Continued on next page...

Continued from previous page...

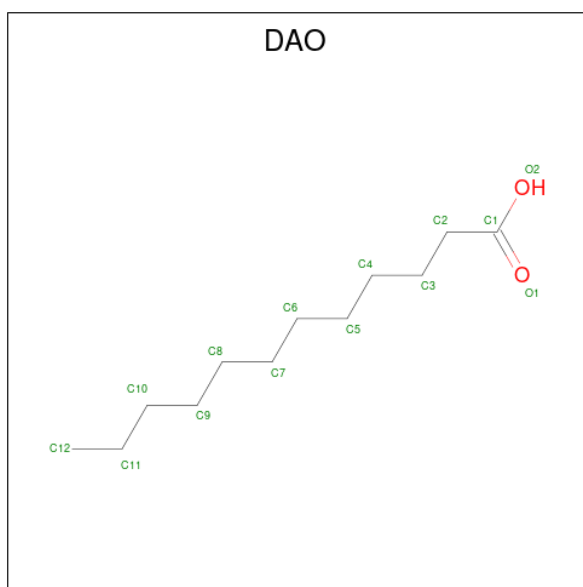
Mol	Chain	Residues	Atoms	ZeroOcc	AltConf
4	B	1	Total C 20 20	0	0

- Molecule 5 is 2-acetamido-2-deoxy-beta-D-glucopyranose (three-letter code: NAG) (formula: $C_8H_{15}NO_6$).



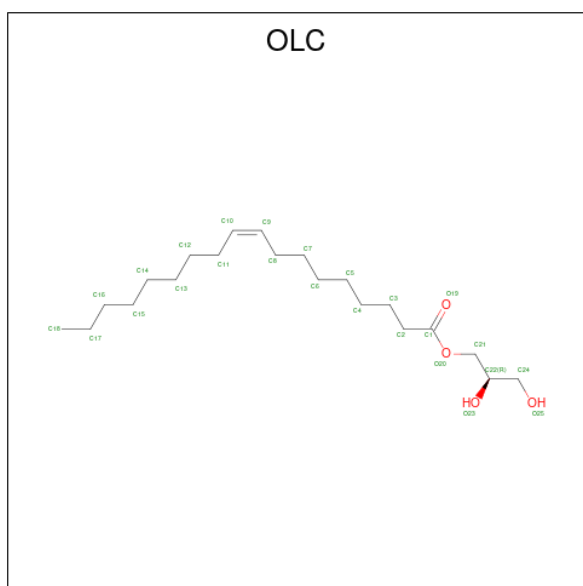
Mol	Chain	Residues	Atoms				ZeroOcc	AltConf
			Total	C	N	O		
5	A	1	14	8	1	5	0	0
5	B	1	14	8	1	5	0	0

- Molecule 6 is LAURIC ACID (three-letter code: DAO) (formula: $C_{12}H_{24}O_2$).



Mol	Chain	Residues	Atoms		ZeroOcc	AltConf
6	A	1	Total	C O	0	0
			13	11 2		

- Molecule 7 is (2R)-2,3-dihydroxypropyl (9Z)-octadec-9-enoate (three-letter code: OLC) (formula: $C_{21}H_{40}O_4$).



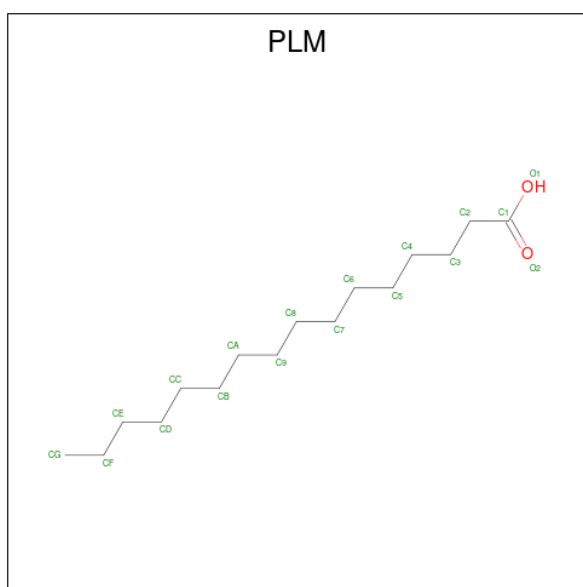
Mol	Chain	Residues	Atoms		ZeroOcc	AltConf
7	A	1	Total	C O	0	0
			25	21 4		
7	A	1	Total	C O	0	0
			17	15 2		

Continued on next page...

Continued from previous page...

Mol	Chain	Residues	Atoms	ZeroOcc	AltConf
7	A	1	Total C 7 7	0	0
7	A	1	Total C 10 10	0	0
7	A	1	Total C 12 12	0	0
7	A	1	Total C O 10 8 2	0	0
7	A	1	Total C O 25 21 4	0	0
7	A	1	Total C O 10 8 2	0	0
7	A	1	Total C 13 13	0	0
7	B	1	Total C O 19 17 2	0	0
7	B	1	Total C O 18 14 4	0	0
7	B	1	Total C 17 17	0	0
7	B	1	Total C 7 7	0	0

- Molecule 8 is PALMITIC ACID (three-letter code: PLM) (formula: $C_{16}H_{32}O_2$).



Mol	Chain	Residues	Atoms			ZeroOcc	AltConf
8	A	1	Total	C	O	0	0
			12	11	1		
8	B	1	Total	C	O	0	0
			7	6	1		

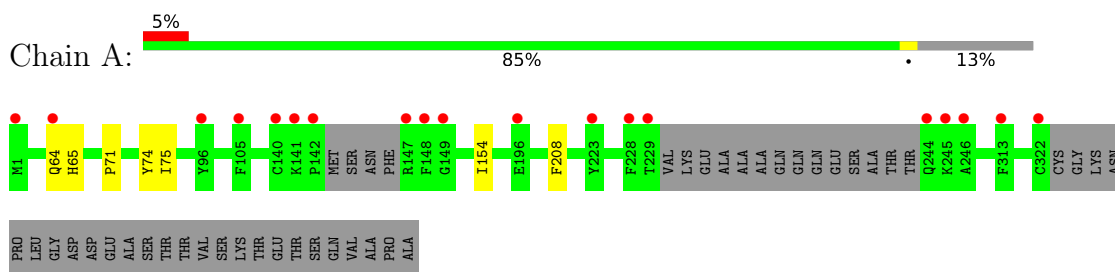
- Molecule 9 is water.

Mol	Chain	Residues	Atoms		ZeroOcc	AltConf
9	A	87	Total	O	0	0
			87	87		
9	B	87	Total	O	0	0
			87	87		

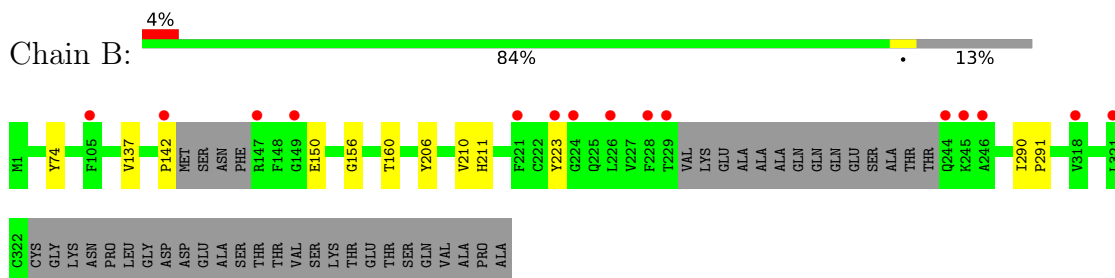
3 Residue-property plots [i](#)

These plots are drawn for all protein, RNA, DNA and oligosaccharide chains in the entry. The first graphic for a chain summarises the proportions of the various outlier classes displayed in the second graphic. The second graphic shows the sequence view annotated by issues in geometry and electron density. Residues are color-coded according to the number of geometric quality criteria for which they contain at least one outlier: green = 0, yellow = 1, orange = 2 and red = 3 or more. A red dot above a residue indicates a poor fit to the electron density ($RSRZ > 2$). Stretches of 2 or more consecutive residues without any outlier are shown as a green connector. Residues present in the sample, but not in the model, are shown in grey.

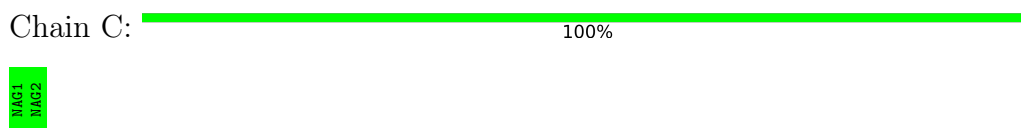
- Molecule 1: Rhodopsin



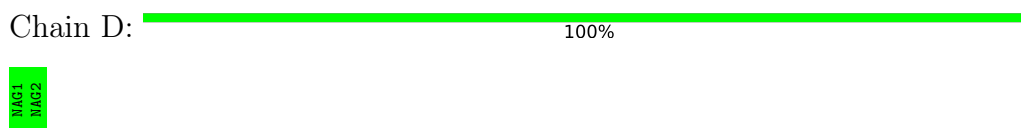
- Molecule 1: Rhodopsin



- Molecule 2: 2-acetamido-2-deoxy-beta-D-glucopyranose-(1-4)-2-acetamido-2-deoxy-beta-D-glucopyranose



- Molecule 2: 2-acetamido-2-deoxy-beta-D-glucopyranose-(1-4)-2-acetamido-2-deoxy-beta-D-glucopyranose



4 Data and refinement statistics

Property	Value	Source
Space group	P 2 21 21	Depositor
Cell constants a, b, c, α , β , γ	61.51Å 91.01Å 151.11Å 90.00° 90.00° 90.00°	Depositor
Resolution (Å)	16.10 – 1.80 16.10 – 1.80	Depositor EDS
% Data completeness (in resolution range)	99.8 (16.10-1.80) 99.8 (16.10-1.80)	Depositor EDS
R_{merge}	(Not available)	Depositor
R_{sym}	(Not available)	Depositor
$\langle I/\sigma(I) \rangle$ ¹	1.38 (at 1.80Å)	Xtrriage
Refinement program	PHENIX 1.19.2_4158	Depositor
R, R_{free}	0.215 , 0.247 0.214 , 0.247	Depositor DCC
R_{free} test set	1144 reflections (1.45%)	wwPDB-VP
Wilson B-factor (Å ²)	30.1	Xtrriage
Anisotropy	0.119	Xtrriage
Bulk solvent k_{sol} (e/Å ³), B_{sol} (Å ²)	0.39 , 93.4	EDS
L-test for twinning ²	$\langle L \rangle = 0.55$, $\langle L^2 \rangle = 0.40$	Xtrriage
Estimated twinning fraction	No twinning to report.	Xtrriage
F_o, F_c correlation	0.96	EDS
Total number of atoms	5497	wwPDB-VP
Average B, all atoms (Å ²)	33.0	wwPDB-VP

Xtrriage's analysis on translational NCS is as follows: *The analyses of the Patterson function reveals a significant off-origin peak that is 55.74 % of the origin peak, indicating pseudo-translational symmetry. The chance of finding a peak of this or larger height randomly in a structure without pseudo-translational symmetry is equal to 3.0262e-05. The detected translational NCS is most likely also responsible for the elevated intensity ratio.*

¹Intensities estimated from amplitudes.

²Theoretical values of $\langle |L| \rangle$, $\langle L^2 \rangle$ for acentric reflections are 0.5, 0.333 respectively for untwinned datasets, and 0.375, 0.2 for perfectly twinned datasets.

5 Model quality

5.1 Standard geometry

Bond lengths and bond angles in the following residue types are not validated in this section: NAG, DAO, PLM, RET, ACE, OLC

The Z score for a bond length (or angle) is the number of standard deviations the observed value is removed from the expected value. A bond length (or angle) with $|Z| > 5$ is considered an outlier worth inspection. RMSZ is the root-mean-square of all Z scores of the bond lengths (or angles).

Mol	Chain	Bond lengths		Bond angles	
		RMSZ	# Z >5	RMSZ	# Z >5
1	A	0.44	0/2565	0.56	0/3504
1	B	0.45	0/2565	0.57	0/3503
All	All	0.44	0/5130	0.56	0/7007

There are no bond length outliers.

There are no bond angle outliers.

There are no chirality outliers.

There are no planarity outliers.

5.2 Too-close contacts

In the following table, the Non-H and H(model) columns list the number of non-hydrogen atoms and hydrogen atoms in the chain respectively. The H(added) column lists the number of hydrogen atoms added and optimized by MolProbity. The Clashes column lists the number of clashes within the asymmetric unit, whereas Symm-Clashes lists symmetry-related clashes.

Mol	Chain	Non-H	H(model)	H(added)	Clashes	Symm-Clashes
1	A	2487	0	2444	6	0
1	B	2484	0	2433	8	0
2	C	28	0	25	0	0
2	D	28	0	25	0	0
3	A	3	0	3	0	0
3	B	3	0	3	0	0
4	A	20	0	27	1	0
4	B	20	0	27	2	0
5	A	14	0	13	0	0
5	B	14	0	13	0	0
6	A	13	0	18	0	0

Continued on next page...

Continued from previous page...

Mol	Chain	Non-H	H(model)	H(added)	Clashes	Symm-Clashes
7	A	129	0	188	2	0
7	B	61	0	88	1	0
8	A	12	0	18	0	0
8	B	7	0	8	0	0
9	A	87	0	0	0	0
9	B	87	0	0	0	0
All	All	5497	0	5333	17	0

The all-atom clashscore is defined as the number of clashes found per 1000 atoms (including hydrogen atoms). The all-atom clashscore for this structure is 2.

All (17) close contacts within the same asymmetric unit are listed below, sorted by their clash magnitude.

Atom-1	Atom-2	Interatomic distance (Å)	Clash overlap (Å)
1:B:210[B]:VAL:HG23	1:B:211:HIS:CD2	2.38	0.59
1:B:206:TYR:O	1:B:210[B]:VAL:HG22	2.07	0.55
4:A:402:RET:H10	4:A:402:RET:H202	1.91	0.51
1:B:137:VAL:HA	1:B:142:PRO:HD2	1.94	0.50
1:B:206:TYR:CE1	1:B:210[B]:VAL:HG21	2.48	0.48
1:A:64:GLN:HG2	1:A:65:HIS:CD2	2.49	0.47
4:B:402:RET:H10	4:B:402:RET:H202	1.97	0.47
1:B:74:TYR:OH	1:B:150:GLU:OE2	2.30	0.47
1:A:74:TYR:HE1	7:A:406:OLC:H3	1.82	0.45
1:A:154:ILE:HG22	7:B:405:OLC:H21A	2.00	0.44
1:B:156:GLY:O	1:B:160:THR:HG23	2.19	0.43
1:B:290[A]:ILE:HB	1:B:291:PRO:HD3	2.00	0.43
1:B:74:TYR:CE2	1:B:150:GLU:HG3	2.55	0.41
1:A:64:GLN:O	1:A:64:GLN:HG3	2.21	0.41
1:A:208:PHE:HB3	7:A:407:OLC:H8	2.03	0.41
4:B:402:RET:C8	4:B:402:RET:H181	2.51	0.41
1:A:71:PRO:O	1:A:75[B]:ILE:HD12	2.22	0.40

There are no symmetry-related clashes.

5.3 Torsion angles [i](#)

5.3.1 Protein backbone [i](#)

In the following table, the Percentiles column shows the percent Ramachandran outliers of the chain as a percentile score with respect to all X-ray entries followed by that with respect to entries of similar resolution.

The Analysed column shows the number of residues for which the backbone conformation was analysed, and the total number of residues.

Mol	Chain	Analysed	Favoured	Allowed	Outliers	Percentiles	
1	A	309/348 (89%)	299 (97%)	10 (3%)	0	100	100
1	B	309/348 (89%)	301 (97%)	8 (3%)	0	100	100
All	All	618/696 (89%)	600 (97%)	18 (3%)	0	100	100

There are no Ramachandran outliers to report.

5.3.2 Protein sidechains [i](#)

In the following table, the Percentiles column shows the percent sidechain outliers of the chain as a percentile score with respect to all X-ray entries followed by that with respect to entries of similar resolution.

The Analysed column shows the number of residues for which the sidechain conformation was analysed, and the total number of residues.

Mol	Chain	Analysed	Rotameric	Outliers	Percentiles	
1	A	264/296 (89%)	264 (100%)	0	100	100
1	B	263/296 (89%)	262 (100%)	1 (0%)	91	89
All	All	527/592 (89%)	526 (100%)	1 (0%)	93	92

All (1) residues with a non-rotameric sidechain are listed below:

Mol	Chain	Res	Type
1	B	223	TYR

Sometimes sidechains can be flipped to improve hydrogen bonding and reduce clashes. There are no such sidechains identified.

5.3.3 RNA [i](#)

There are no RNA molecules in this entry.

5.4 Non-standard residues in protein, DNA, RNA chains [i](#)

There are no non-standard protein/DNA/RNA residues in this entry.

5.5 Carbohydrates

4 monosaccharides are modelled in this entry.

In the following table, the Counts columns list the number of bonds (or angles) for which Mogul statistics could be retrieved, the number of bonds (or angles) that are observed in the model and the number of bonds (or angles) that are defined in the Chemical Component Dictionary. The Link column lists molecule types, if any, to which the group is linked. The Z score for a bond length (or angle) is the number of standard deviations the observed value is removed from the expected value. A bond length (or angle) with $|Z| > 2$ is considered an outlier worth inspection. RMSZ is the root-mean-square of all Z scores of the bond lengths (or angles).

Mol	Type	Chain	Res	Link	Bond lengths			Bond angles		
					Counts	RMSZ	# Z > 2	Counts	RMSZ	# Z > 2
2	NAG	C	1	2,1	14,14,15	0.22	0	17,19,21	0.58	0
2	NAG	C	2	2	14,14,15	0.24	0	17,19,21	0.52	0
2	NAG	D	1	2,1	14,14,15	0.58	0	17,19,21	0.47	0
2	NAG	D	2	2	14,14,15	0.33	0	17,19,21	0.51	0

In the following table, the Chirals column lists the number of chiral outliers, the number of chiral centers analysed, the number of these observed in the model and the number defined in the Chemical Component Dictionary. Similar counts are reported in the Torsion and Rings columns. '-' means no outliers of that kind were identified.

Mol	Type	Chain	Res	Link	Chirals	Torsions	Rings
2	NAG	C	1	2,1	-	0/6/23/26	0/1/1/1
2	NAG	C	2	2	-	0/6/23/26	0/1/1/1
2	NAG	D	1	2,1	-	0/6/23/26	0/1/1/1
2	NAG	D	2	2	-	0/6/23/26	0/1/1/1

There are no bond length outliers.

There are no bond angle outliers.

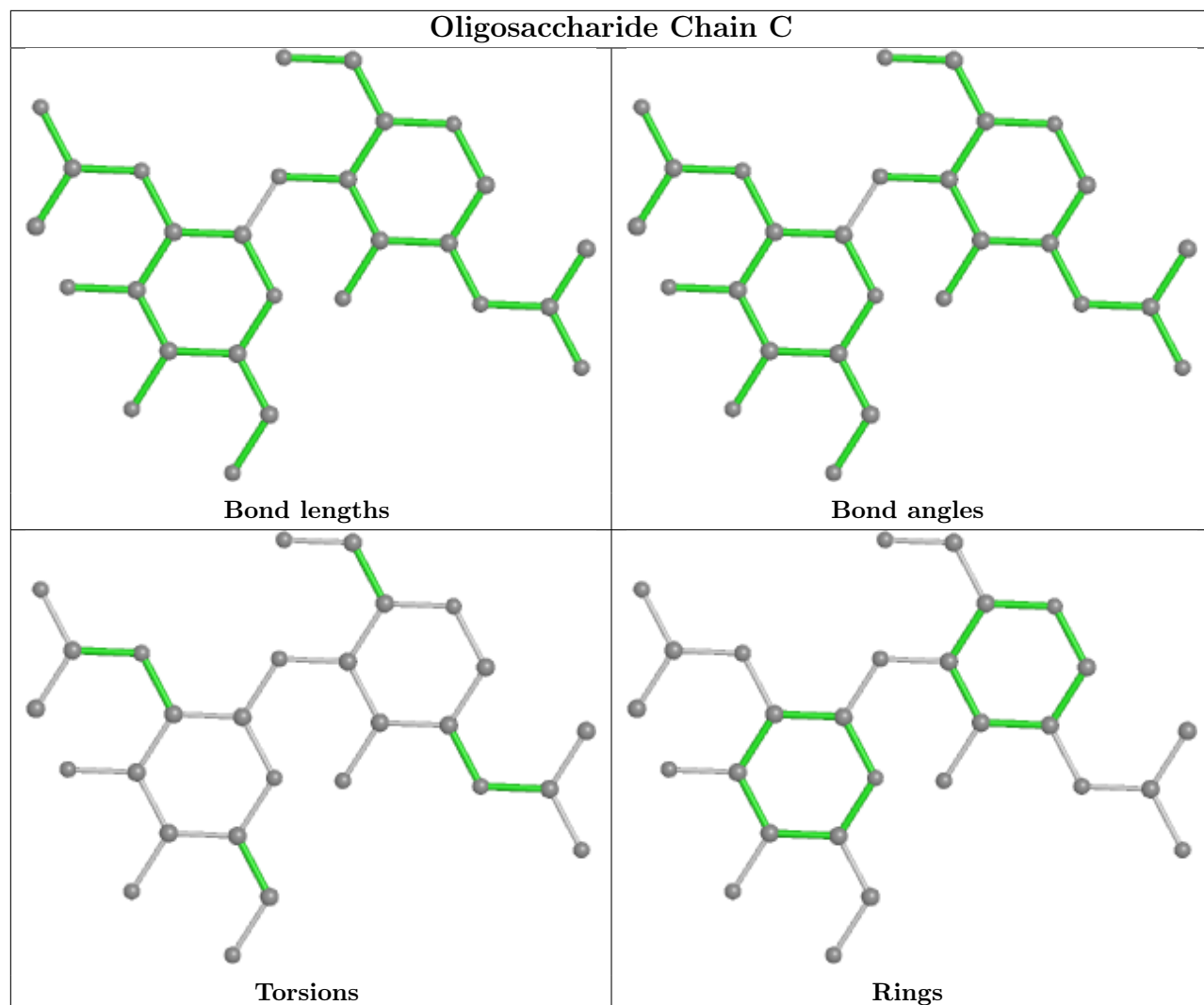
There are no chirality outliers.

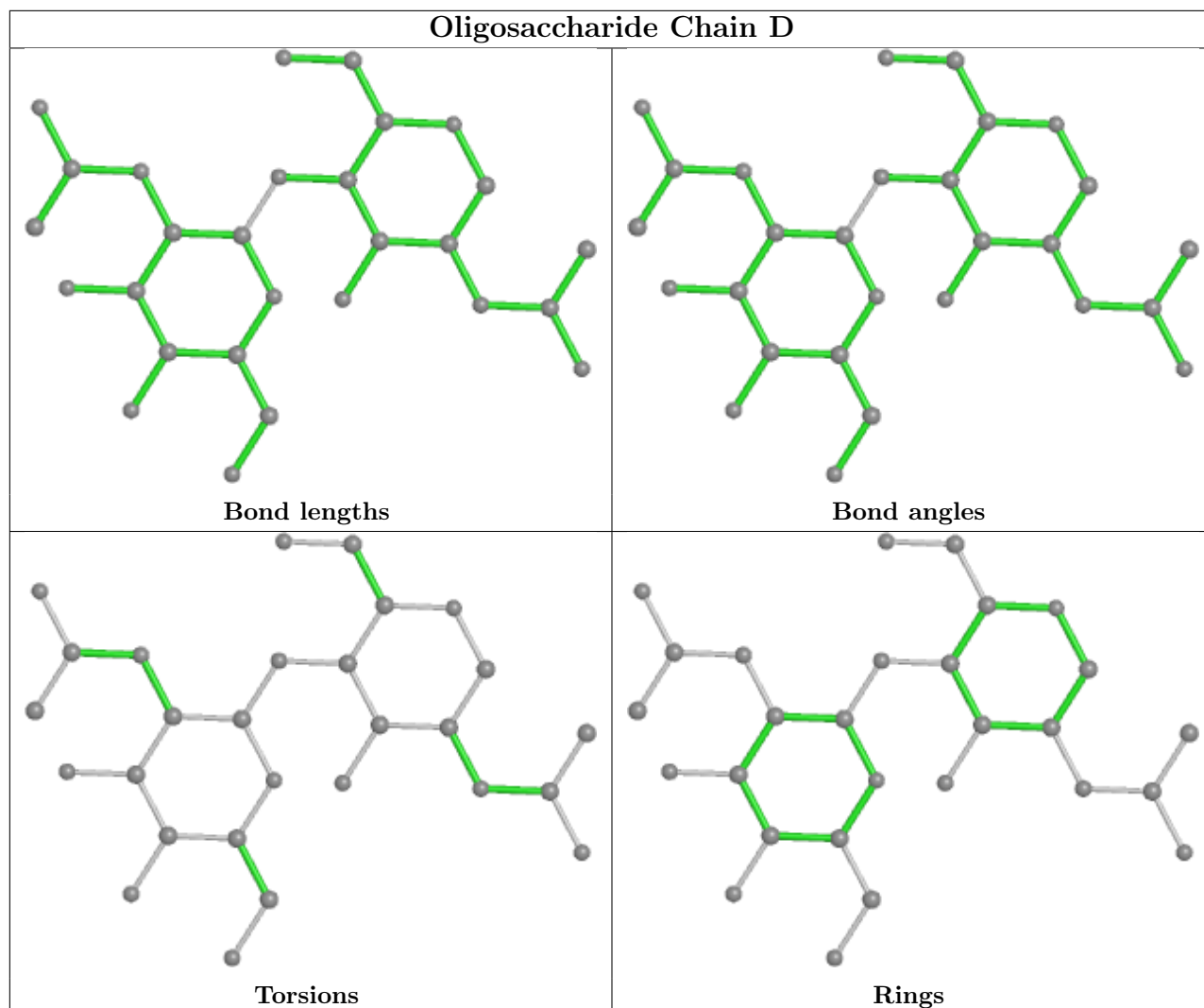
There are no torsion outliers.

There are no ring outliers.

No monomer is involved in short contacts.

The following is a two-dimensional graphical depiction of Mogul quality analysis of bond lengths, bond angles, torsion angles, and ring geometry for oligosaccharide.





5.6 Ligand geometry [i](#)

22 ligands are modelled in this entry.

In the following table, the Counts columns list the number of bonds (or angles) for which Mogul statistics could be retrieved, the number of bonds (or angles) that are observed in the model and the number of bonds (or angles) that are defined in the Chemical Component Dictionary. The Link column lists molecule types, if any, to which the group is linked. The Z score for a bond length (or angle) is the number of standard deviations the observed value is removed from the expected value. A bond length (or angle) with $|Z| > 2$ is considered an outlier worth inspection. RMSZ is the root-mean-square of all Z scores of the bond lengths (or angles).

Mol	Type	Chain	Res	Link	Bond lengths			Bond angles		
					Counts	RMSZ	$\# Z > 2$	Counts	RMSZ	$\# Z > 2$
5	NAG	B	403	1	14,14,15	0.33	0	17,19,21	0.53	0
7	OLC	A	412	-	24,24,24	0.26	0	25,25,25	0.25	0
5	NAG	A	403	1	14,14,15	0.35	0	17,19,21	0.53	0
7	OLC	A	405	-	24,24,24	0.31	0	25,25,25	0.36	0

Mol	Type	Chain	Res	Link	Bond lengths			Bond angles		
					Counts	RMSZ	# Z > 2	Counts	RMSZ	# Z > 2
7	OLC	A	411	-	9,9,24	1.52	2 (22%)	9,9,25	1.67	2 (22%)
3	ACE	A	401	1	1,2,2	0.74	0	1,1,1	0.51	0
7	OLC	A	414	-	12,12,24	0.24	0	11,11,25	0.12	0
4	RET	A	402	1	20,20,21	0.96	2 (10%)	27,27,28	0.83	1 (3%)
7	OLC	A	409	-	11,11,24	0.21	0	10,10,25	0.28	0
7	OLC	B	408	-	6,6,24	0.20	0	4,5,25	0.25	0
3	ACE	B	401	1	1,2,2	0.70	0	1,1,1	0.20	0
4	RET	B	402	1	20,20,21	1.05	2 (10%)	27,27,28	0.82	1 (3%)
7	OLC	B	406	-	16,16,24	0.20	0	15,15,25	0.22	0
7	OLC	B	405	-	17,17,24	0.29	0	18,18,25	0.37	0
7	OLC	A	408	-	9,9,24	0.27	0	8,8,25	0.27	0
8	PLM	A	410	1	11,11,17	0.58	0	10,10,17	0.60	0
7	OLC	A	406	-	16,16,24	0.38	0	16,16,25	0.39	0
7	OLC	A	407	-	6,6,24	0.23	0	4,5,25	0.22	0
8	PLM	B	407	1	6,6,17	0.79	0	5,5,17	0.80	0
7	OLC	A	413	-	9,9,24	1.51	2 (22%)	9,9,25	1.69	2 (22%)
6	DAO	A	404	-	12,12,13	0.72	0	12,12,13	0.66	0
7	OLC	B	404	-	18,18,24	0.33	0	18,18,25	0.30	0

In the following table, the Chirals column lists the number of chiral outliers, the number of chiral centers analysed, the number of these observed in the model and the number defined in the Chemical Component Dictionary. Similar counts are reported in the Torsion and Rings columns. '2' means no outliers of that kind were identified.

Mol	Type	Chain	Res	Link	Chirals	Torsions	Rings
5	NAG	B	403	1	-	0/6/23/26	0/1/1/1
7	OLC	A	412	-	-	6/24/24/24	-
5	NAG	A	403	1	-	0/6/23/26	0/1/1/1
7	OLC	A	405	-	-	5/24/24/24	-
7	OLC	A	411	-	-	2/7/7/24	-
7	OLC	A	414	-	-	2/10/10/24	-
4	RET	A	402	1	-	1/13/30/31	0/1/1/1
7	OLC	A	409	-	-	1/9/9/24	-
7	OLC	B	408	-	-	1/4/4/24	-
4	RET	B	402	1	-	1/13/30/31	0/1/1/1
7	OLC	B	406	-	-	1/14/14/24	-
7	OLC	B	405	-	-	4/17/17/24	-
7	OLC	A	408	-	-	1/7/7/24	-
8	PLM	A	410	1	-	0/8/9/15	-
7	OLC	A	406	-	-	6/14/14/24	-

Continued on next page...

Continued from previous page...

Mol	Type	Chain	Res	Link	Chirals	Torsions	Rings
7	OLC	A	407	-	-	1/4/4/24	-
8	PLM	B	407	1	-	0/3/4/15	-
7	OLC	A	413	-	-	2/7/7/24	-
6	DAO	A	404	-	-	3/10/10/11	-
7	OLC	B	404	-	-	4/17/17/24	-

All (8) bond length outliers are listed below:

Mol	Chain	Res	Type	Atoms	Z	Observed(Å)	Ideal(Å)
7	A	411	OLC	O19-C1	3.42	1.33	1.22
7	A	413	OLC	O19-C1	3.38	1.33	1.22
4	B	402	RET	C14-C13	3.17	1.36	1.33
7	A	411	OLC	O20-C1	-2.96	1.20	1.30
7	A	413	OLC	O20-C1	-2.94	1.20	1.30
4	A	402	RET	C14-C13	2.82	1.36	1.33
4	A	402	RET	C15-C14	-2.60	1.39	1.49
4	B	402	RET	C15-C14	-2.47	1.40	1.49

All (6) bond angle outliers are listed below:

Mol	Chain	Res	Type	Atoms	Z	Observed(°)	Ideal(°)
7	A	413	OLC	O19-C1-C2	-3.63	111.42	123.08
7	A	411	OLC	O19-C1-C2	-3.60	111.50	123.08
7	A	413	OLC	O20-C1-C2	3.50	125.27	114.03
7	A	411	OLC	O20-C1-C2	3.43	125.06	114.03
4	B	402	RET	C10-C11-C12	2.48	130.94	123.22
4	A	402	RET	C10-C11-C12	2.15	129.93	123.22

There are no chirality outliers.

All (41) torsion outliers are listed below:

Mol	Chain	Res	Type	Atoms
7	A	407	OLC	C7-C8-C9-C10
7	B	404	OLC	C2-C1-O20-C21
7	B	404	OLC	O19-C1-O20-C21
7	A	412	OLC	O19-C1-O20-C21
7	A	412	OLC	C2-C1-O20-C21
7	B	406	OLC	C5-C6-C7-C8
7	B	405	OLC	C21-C22-C24-O25
7	A	406	OLC	C5-C6-C7-C8

Continued on next page...

Continued from previous page...

Mol	Chain	Res	Type	Atoms
6	A	404	DAO	C2-C3-C4-C5
7	A	406	OLC	C3-C4-C5-C6
7	A	405	OLC	C2-C1-O20-C21
7	A	405	OLC	O19-C1-O20-C21
7	A	412	OLC	O20-C21-C22-O23
7	B	404	OLC	C3-C4-C5-C6
7	A	406	OLC	C6-C7-C8-C9
7	A	412	OLC	C5-C6-C7-C8
7	B	405	OLC	C2-C1-O20-C21
7	A	405	OLC	C9-C10-C11-C12
7	B	405	OLC	O19-C1-O20-C21
7	A	405	OLC	C2-C3-C4-C5
4	A	402	RET	C10-C11-C12-C13
4	B	402	RET	C10-C11-C12-C13
7	A	412	OLC	C3-C4-C5-C6
7	A	406	OLC	C9-C10-C11-C12
7	B	408	OLC	C9-C10-C11-C12
7	A	414	OLC	C9-C10-C11-C12
7	B	405	OLC	O23-C22-C24-O25
7	A	408	OLC	C11-C12-C13-C14
7	A	411	OLC	O19-C1-C2-C3
6	A	404	DAO	O1-C1-C2-C3
7	A	411	OLC	O20-C1-C2-C3
7	B	404	OLC	C6-C7-C8-C9
6	A	404	DAO	O2-C1-C2-C3
7	A	406	OLC	O20-C1-C2-C3
7	A	406	OLC	O19-C1-C2-C3
7	A	413	OLC	O20-C1-C2-C3
7	A	412	OLC	C7-C8-C9-C10
7	A	413	OLC	O19-C1-C2-C3
7	A	409	OLC	C7-C8-C9-C10
7	A	414	OLC	C7-C8-C9-C10
7	A	405	OLC	C3-C4-C5-C6

There are no ring outliers.

5 monomers are involved in 6 short contacts:

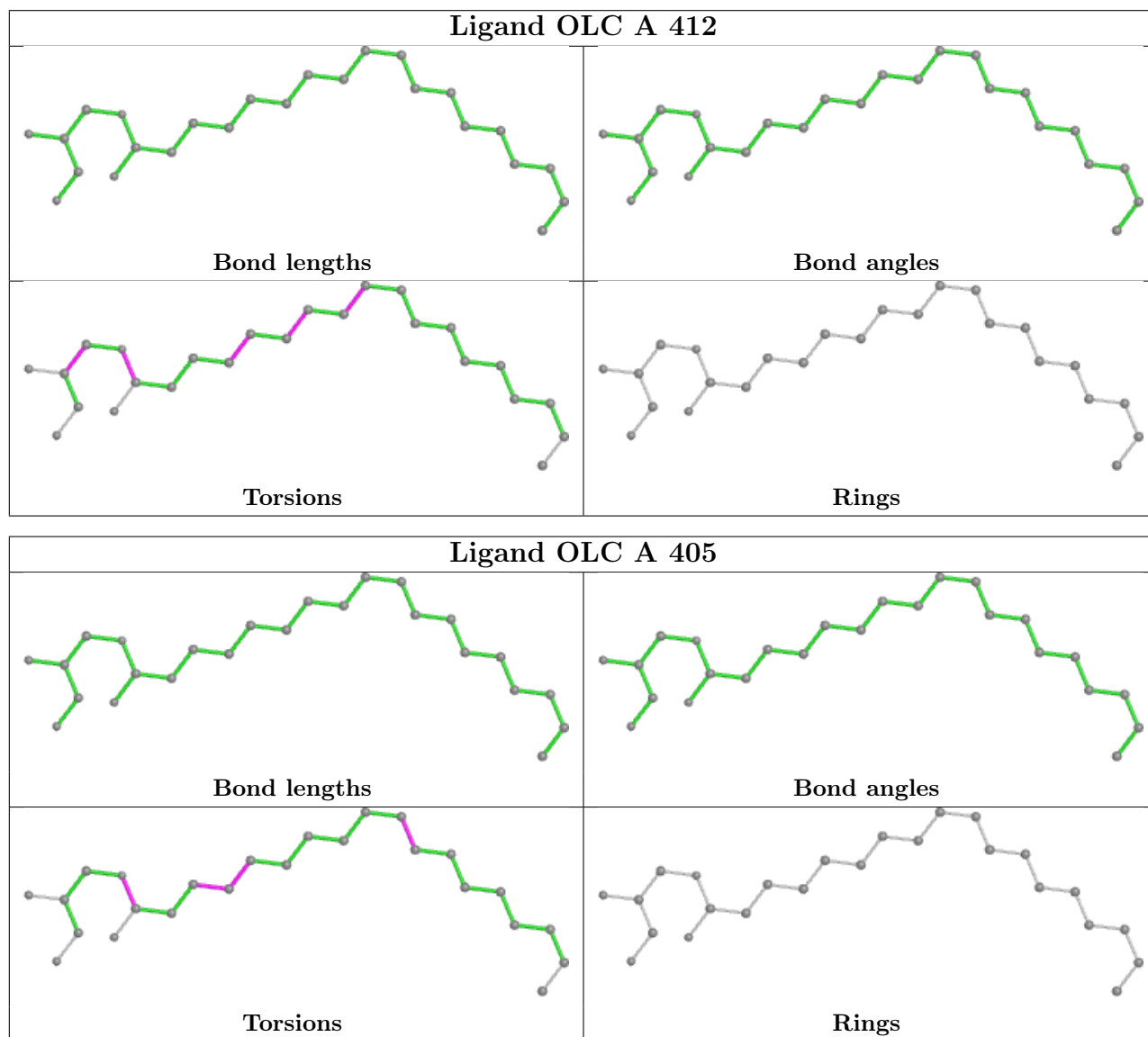
Mol	Chain	Res	Type	Clashes	Symm-Clashes
4	A	402	RET	1	0
4	B	402	RET	2	0
7	B	405	OLC	1	0
7	A	406	OLC	1	0

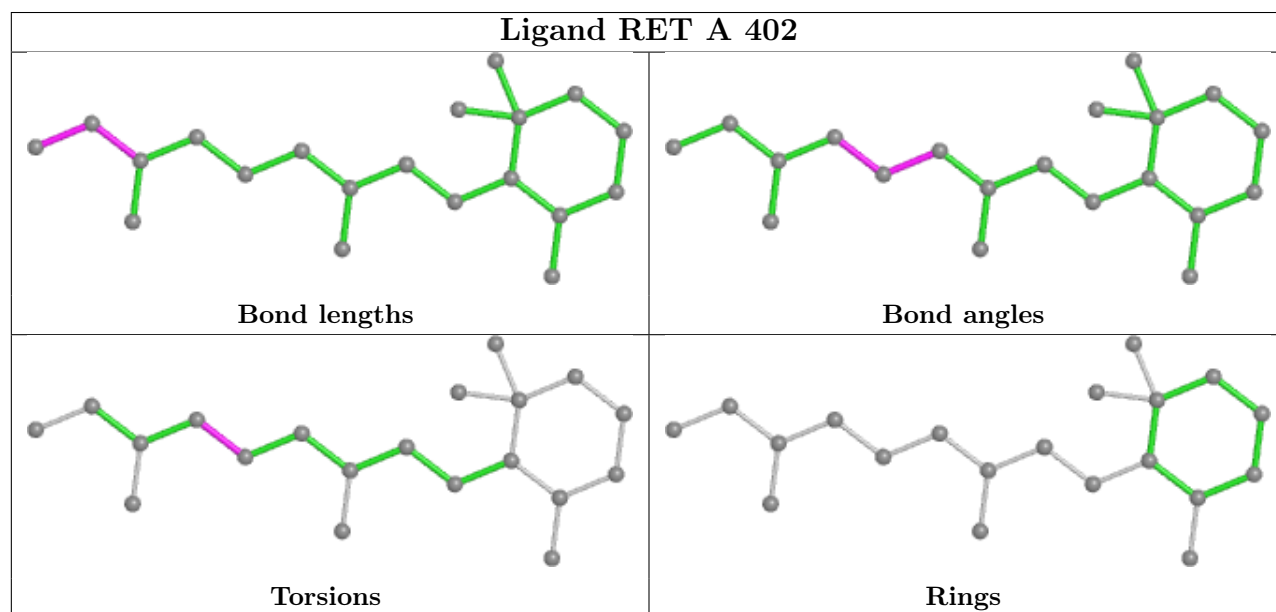
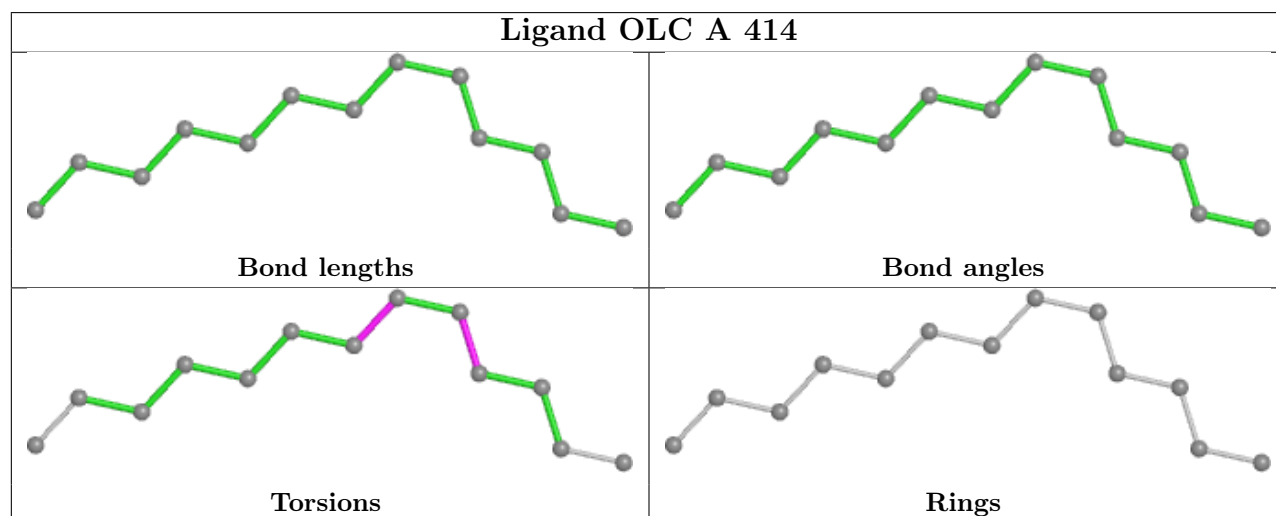
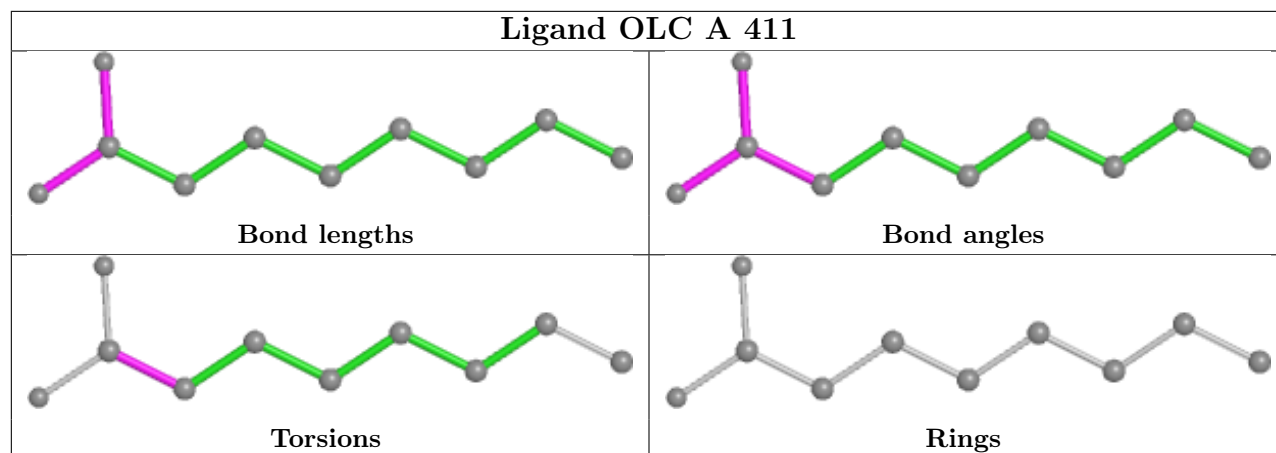
Continued on next page...

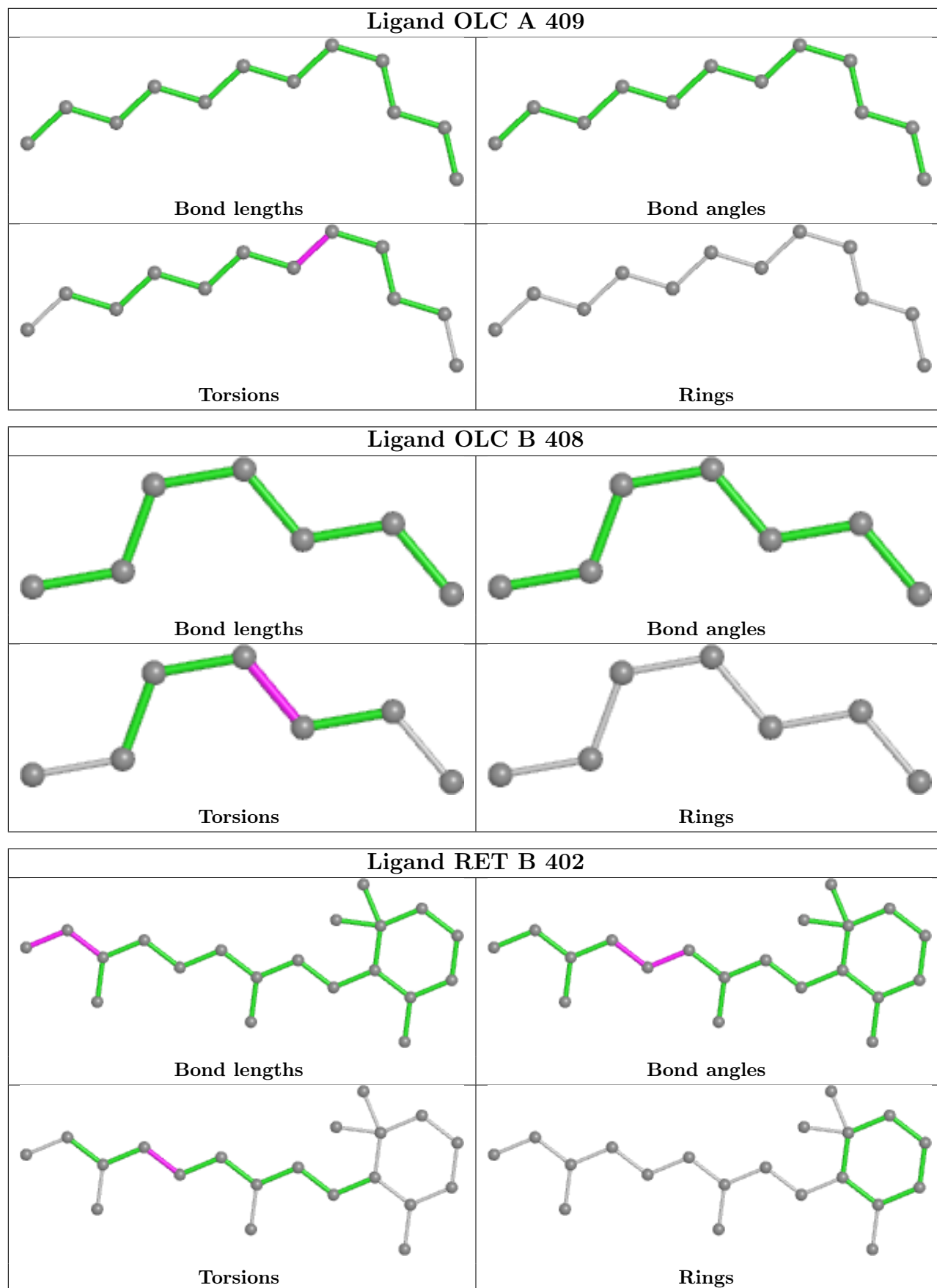
Continued from previous page...

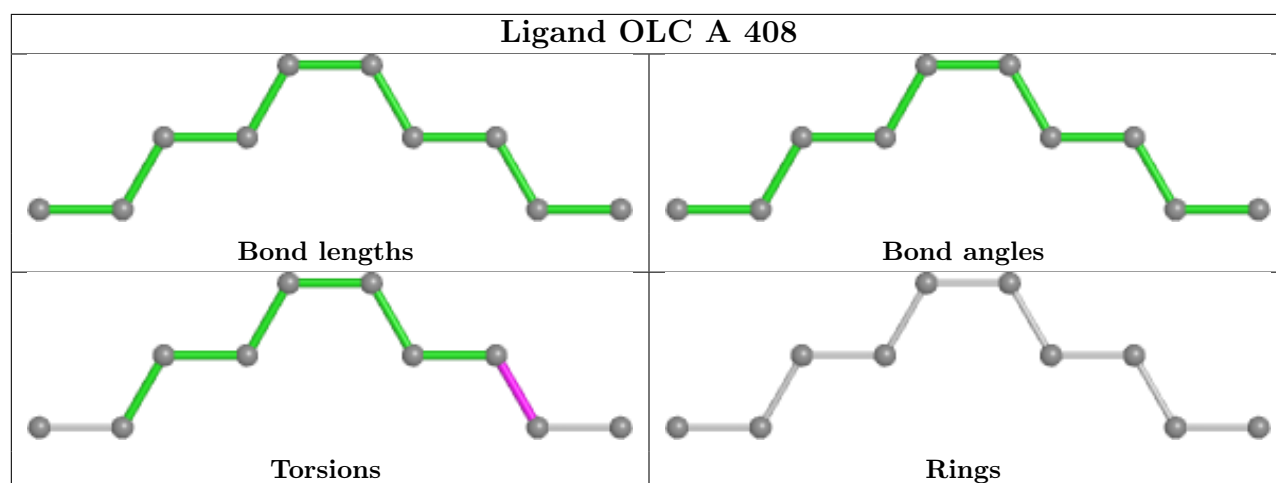
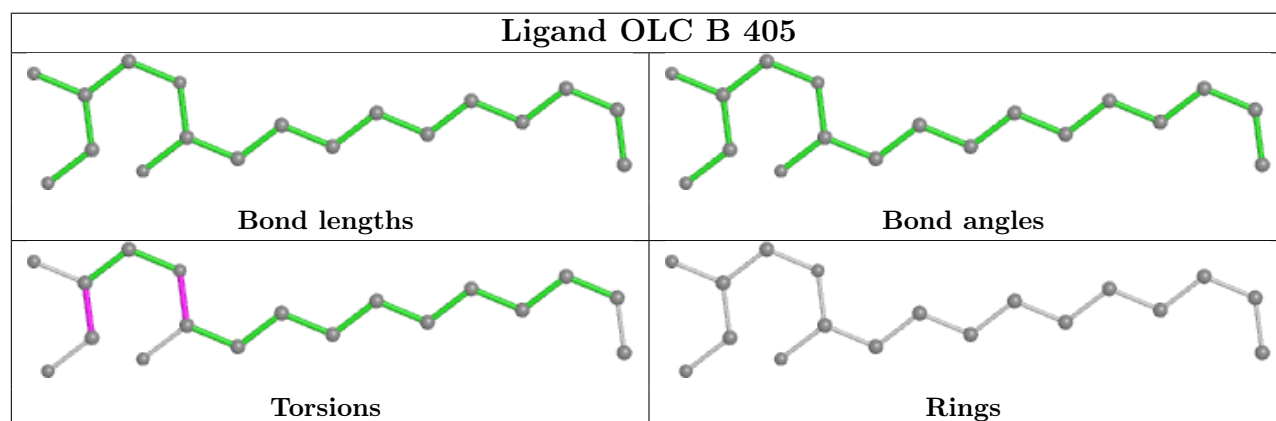
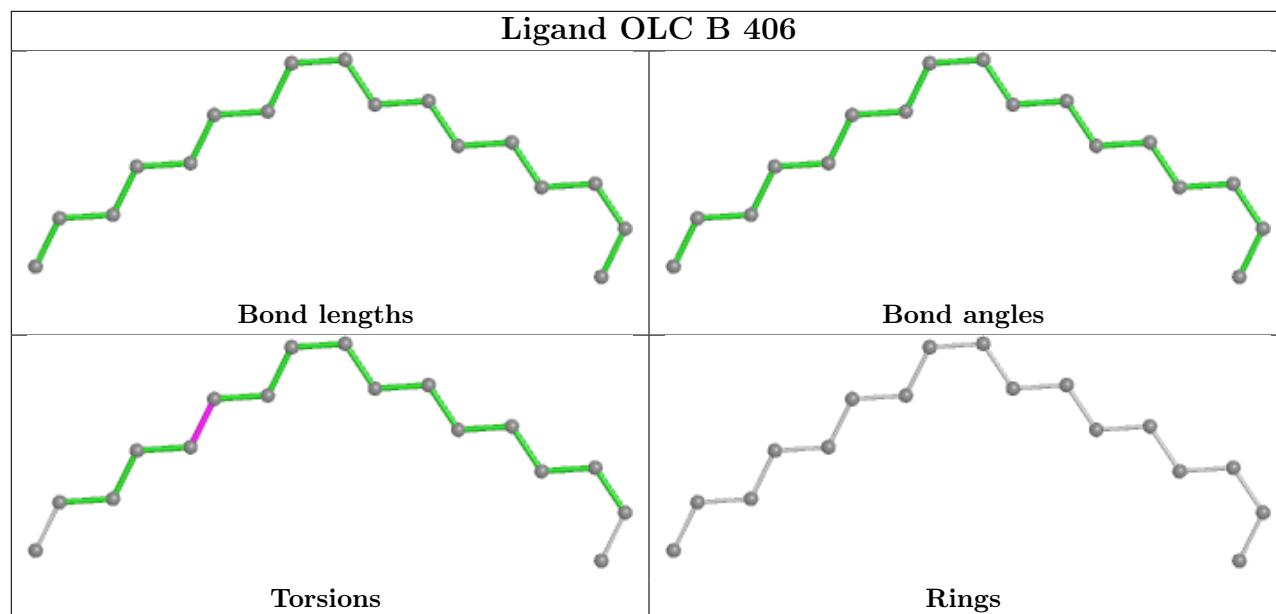
Mol	Chain	Res	Type	Clashes	Symm-Clashes
7	A	407	OLC	1	0

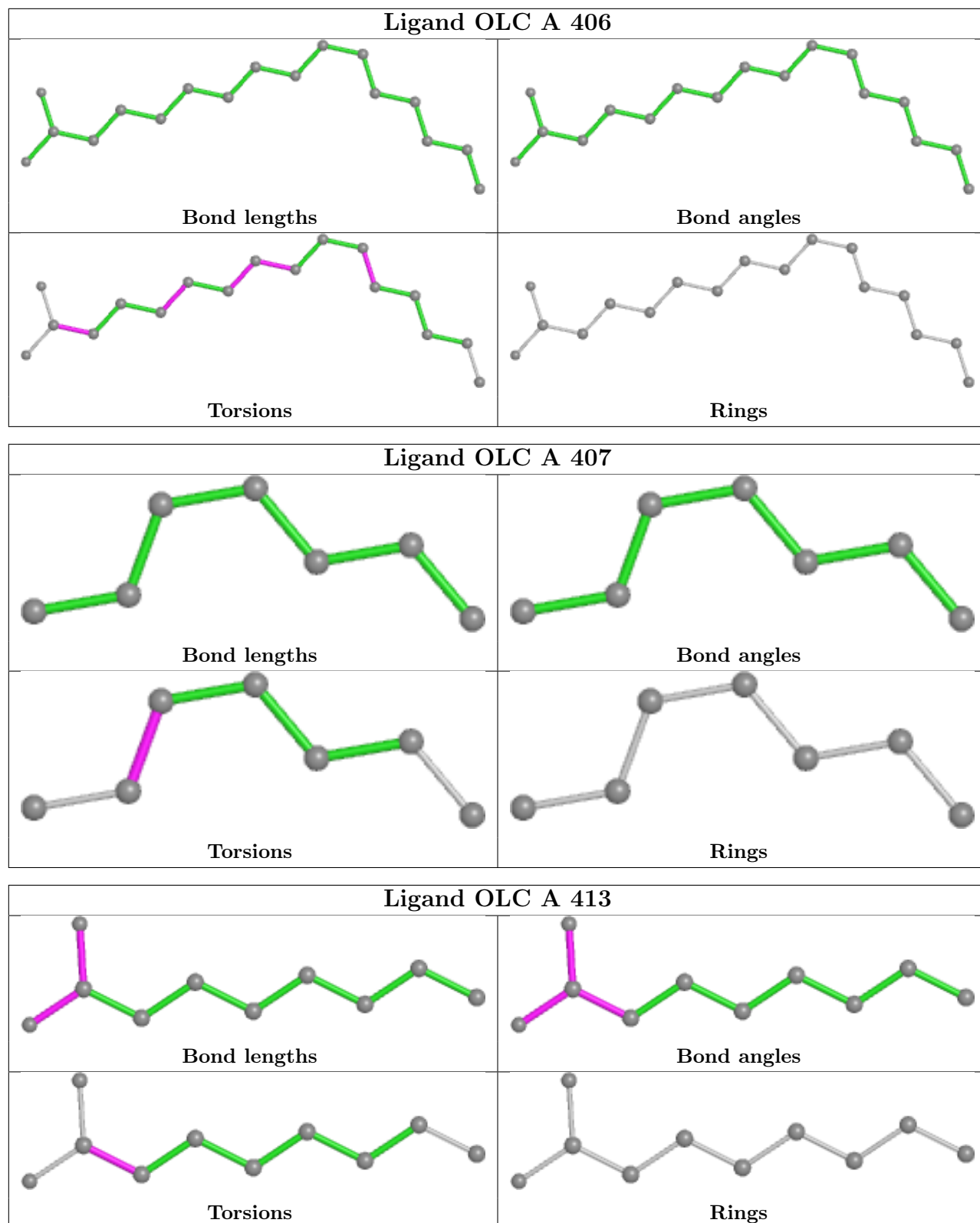
The following is a two-dimensional graphical depiction of Mogul quality analysis of bond lengths, bond angles, torsion angles, and ring geometry for all instances of the Ligand of Interest. In addition, ligands with molecular weight > 250 and outliers as shown on the validation Tables will also be included. For torsion angles, if less than 5% of the Mogul distribution of torsion angles is within 10 degrees of the torsion angle in question, then that torsion angle is considered an outlier. Any bond that is central to one or more torsion angles identified as an outlier by Mogul will be highlighted in the graph. For rings, the root-mean-square deviation (RMSD) between the ring in question and similar rings identified by Mogul is calculated over all ring torsion angles. If the average RMSD is greater than 60 degrees and the minimal RMSD between the ring in question and any Mogul-identified rings is also greater than 60 degrees, then that ring is considered an outlier. The outliers are highlighted in purple. The color gray indicates Mogul did not find sufficient equivalents in the CSD to analyse the geometry.

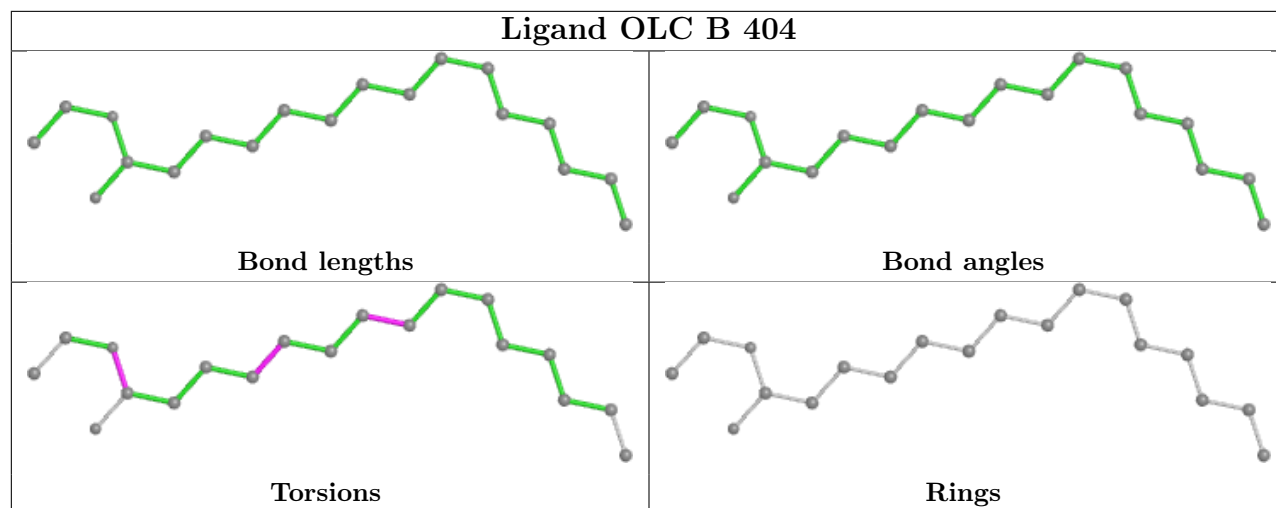












5.7 Other polymers [i](#)

There are no such residues in this entry.

5.8 Polymer linkage issues [i](#)

There are no chain breaks in this entry.

6 Fit of model and data

6.1 Protein, DNA and RNA chains

In the following table, the column labelled ‘#RSRZ > 2’ contains the number (and percentage) of RSRZ outliers, followed by percent RSRZ outliers for the chain as percentile scores relative to all X-ray entries and entries of similar resolution. The OWAB column contains the minimum, median, 95th percentile and maximum values of the occupancy-weighted average B-factor per residue. The column labelled ‘Q < 0.9’ lists the number of (and percentage) of residues with an average occupancy less than 0.9.

Mol	Chain	Analysed	<RSRZ>	#RSRZ>2	OWAB(Å ²)	Q<0.9
1	A	304/348 (87%)	0.09	19 (6%) 20 15	21, 29, 55, 92	0
1	B	304/348 (87%)	0.04	15 (4%) 29 24	21, 29, 55, 90	0
All	All	608/696 (87%)	0.06	34 (5%) 24 19	21, 29, 55, 92	0

All (34) RSRZ outliers are listed below:

Mol	Chain	Res	Type	RSRZ
1	B	142	PRO	5.9
1	B	228	PHE	5.8
1	B	229	THR	5.8
1	A	1	MET	5.3
1	B	244	GLN	5.1
1	A	223	TYR	4.8
1	A	142	PRO	4.6
1	A	244	GLN	4.4
1	A	147	ARG	4.3
1	A	149	GLY	4.2
1	A	229	THR	3.9
1	A	148	PHE	3.8
1	A	228	PHE	3.6
1	A	140	CYS	3.2
1	B	245	LYS	3.2
1	A	246	ALA	3.0
1	B	149	GLY	3.0
1	B	147	ARG	2.9
1	B	105	PHE	2.8
1	B	223	TYR	2.7
1	A	141	LYS	2.6
1	A	245	LYS	2.6
1	B	246	ALA	2.5
1	B	318	VAL	2.5

Continued on next page...

Continued from previous page...

Mol	Chain	Res	Type	RSRZ
1	A	322	CYS	2.4
1	B	321	LEU	2.3
1	A	313	PHE	2.2
1	A	64	GLN	2.2
1	A	196	GLU	2.1
1	B	224	GLY	2.1
1	A	105	PHE	2.1
1	A	96	TYR	2.0
1	B	221	PHE	2.0
1	B	226	LEU	2.0

6.2 Non-standard residues in protein, DNA, RNA chains [i](#)

There are no non-standard protein/DNA/RNA residues in this entry.

6.3 Carbohydrates [i](#)

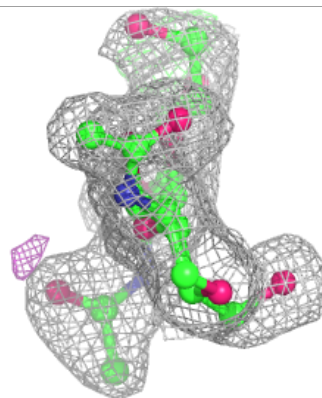
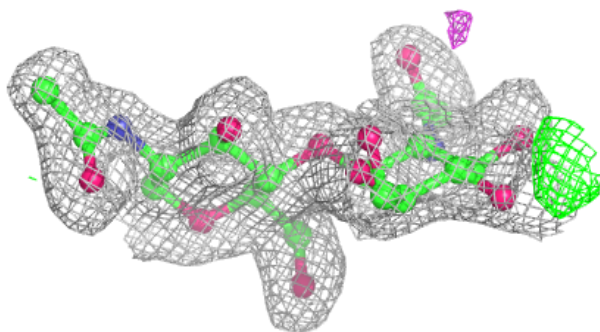
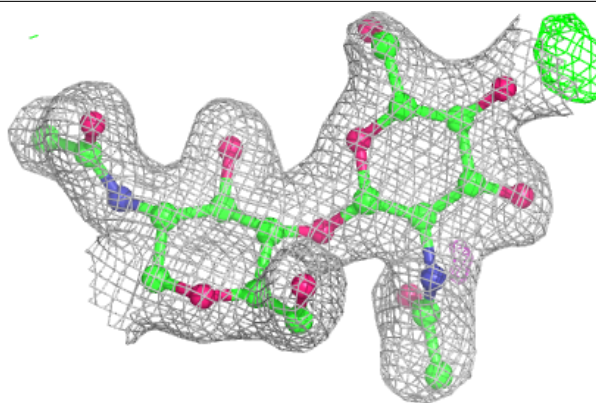
In the following table, the Atoms column lists the number of modelled atoms in the group and the number defined in the chemical component dictionary. The B-factors column lists the minimum, median, 95th percentile and maximum values of B factors of atoms in the group. The column labelled 'Q < 0.9' lists the number of atoms with occupancy less than 0.9.

Mol	Type	Chain	Res	Atoms	RSCC	RSR	B-factors(Å ²)	Q < 0.9
2	NAG	C	2	14/15	0.86	0.19	38,45,55,64	0
2	NAG	D	2	14/15	0.89	0.34	46,56,68,74	0
2	NAG	D	1	14/15	0.91	0.17	31,37,41,42	0
2	NAG	C	1	14/15	0.95	0.07	29,32,37,39	0

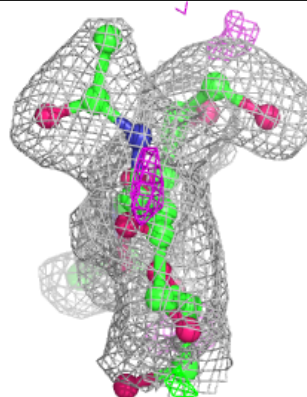
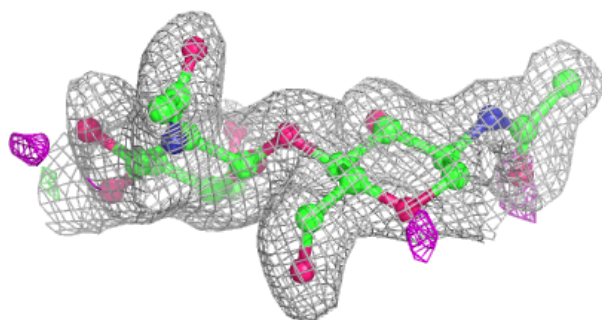
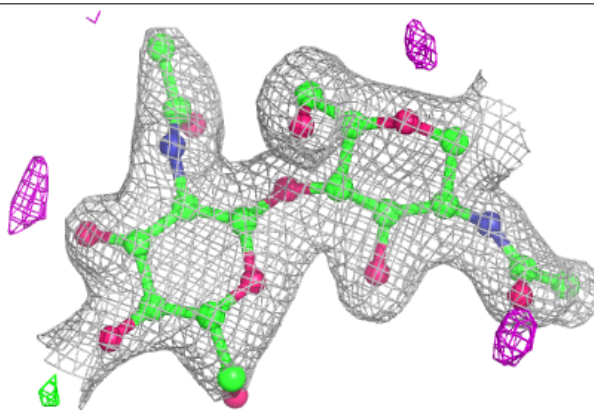
The following is a graphical depiction of the model fit to experimental electron density for oligosaccharide. Each fit is shown from different orientation to approximate a three-dimensional view.

Electron density around Chain C:

$2mF_o-DF_c$ (at 0.7 rmsd) in gray
 mF_o-DF_c (at 3 rmsd) in purple (negative)
and green (positive)

**Electron density around Chain D:**

$2mF_o-DF_c$ (at 0.7 rmsd) in gray
 mF_o-DF_c (at 3 rmsd) in purple (negative)
and green (positive)



6.4 Ligands [i](#)

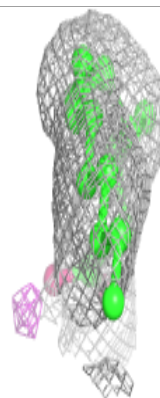
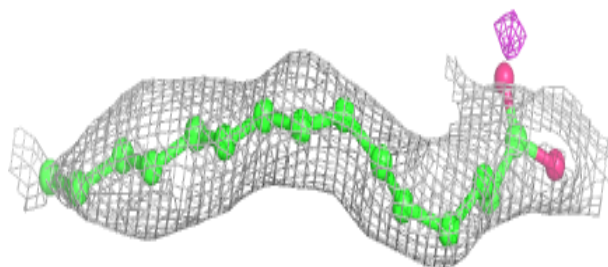
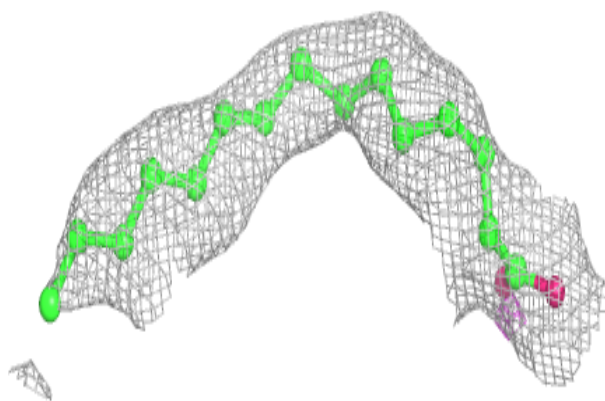
In the following table, the Atoms column lists the number of modelled atoms in the group and the number defined in the chemical component dictionary. The B-factors column lists the minimum, median, 95th percentile and maximum values of B factors of atoms in the group. The column labelled 'Q< 0.9' lists the number of atoms with occupancy less than 0.9.

Mol	Type	Chain	Res	Atoms	RSCC	RSR	B-factors(Å ²)	Q<0.9
8	PLM	A	410	12/18	0.61	0.20	69,76,83,84	0
7	OLC	A	406	17/25	0.70	0.18	45,61,77,87	0
7	OLC	A	409	12/25	0.70	0.25	42,51,63,65	0
7	OLC	B	404	19/25	0.70	0.22	41,60,79,80	0
3	ACE	A	401	3/3	0.70	0.51	77,77,77,83	0
8	PLM	B	407	7/18	0.74	0.16	67,70,72,80	0
7	OLC	A	411	10/25	0.78	0.16	57,63,71,75	0
7	OLC	B	405	18/25	0.78	0.20	43,55,69,78	0
7	OLC	A	412	25/25	0.79	0.18	48,58,71,75	0
7	OLC	B	406	17/25	0.80	0.14	42,50,68,71	0
7	OLC	A	414	13/25	0.81	0.17	46,50,63,64	0
7	OLC	B	408	7/25	0.82	0.17	39,45,53,62	0
7	OLC	A	408	10/25	0.82	0.14	42,54,62,62	0
7	OLC	A	405	25/25	0.82	0.18	51,60,74,89	0
5	NAG	A	403	14/15	0.84	0.30	43,54,61,66	0
6	DAO	A	404	13/14	0.85	0.25	40,51,57,65	0
7	OLC	A	413	10/25	0.89	0.09	53,61,72,75	0
5	NAG	B	403	14/15	0.89	0.16	34,42,47,48	0
4	RET	A	402	20/21	0.93	0.10	20,23,28,30	0
7	OLC	A	407	7/25	0.93	0.09	37,42,48,48	0
4	RET	B	402	20/21	0.95	0.10	19,22,35,36	0
3	ACE	B	401	3/3	0.98	0.17	38,38,38,40	0

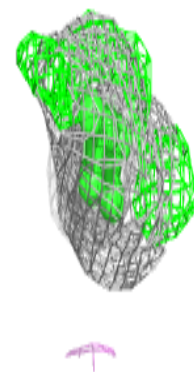
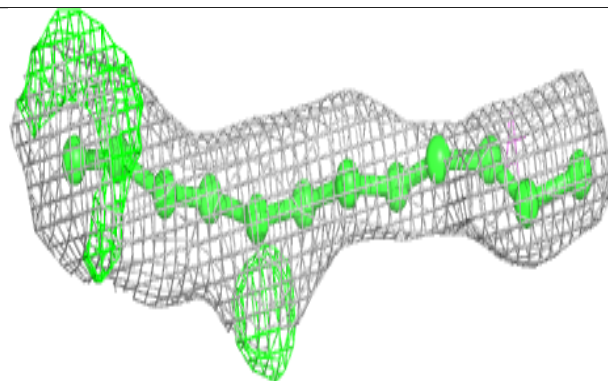
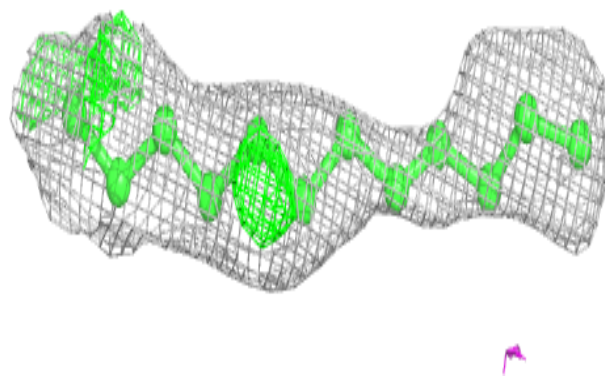
The following is a graphical depiction of the model fit to experimental electron density of all instances of the Ligand of Interest. In addition, ligands with molecular weight > 250 and outliers as shown on the geometry validation Tables will also be included. Each fit is shown from different orientation to approximate a three-dimensional view.

Electron density around OLC A 406:

$2mF_o-DF_c$ (at 0.7 rmsd) in gray
 mF_o-DF_c (at 3 rmsd) in purple (negative)
and green (positive)

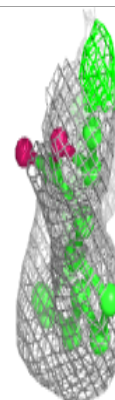
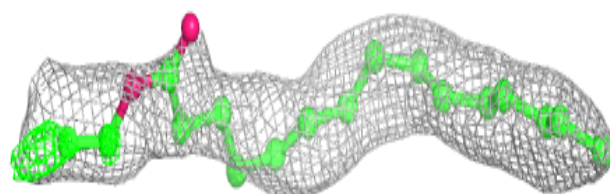
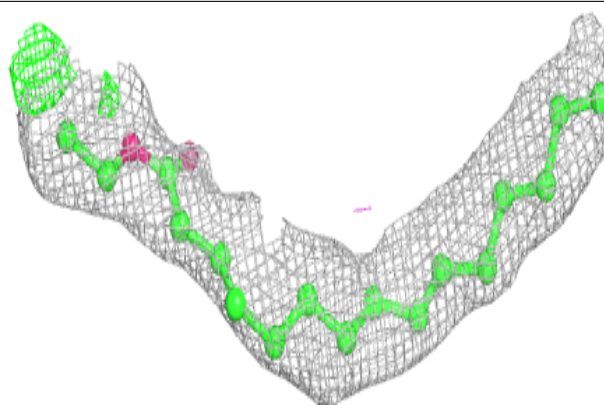
**Electron density around OLC A 409:**

$2mF_o-DF_c$ (at 0.7 rmsd) in gray
 mF_o-DF_c (at 3 rmsd) in purple (negative)
and green (positive)

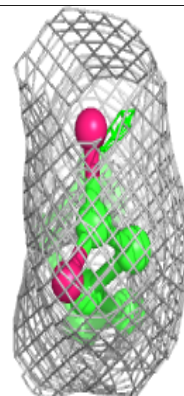
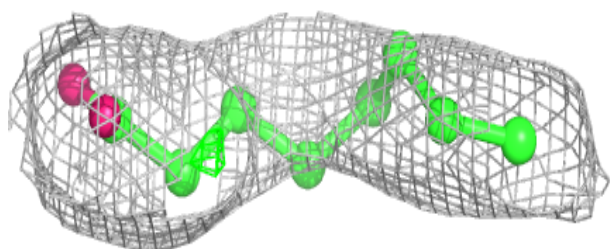
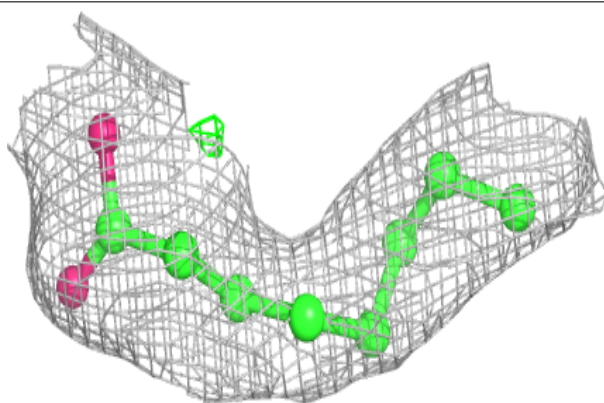


Electron density around OLC B 404:

$2mF_o-DF_c$ (at 0.7 rmsd) in gray
 mF_o-DF_c (at 3 rmsd) in purple (negative)
and green (positive)

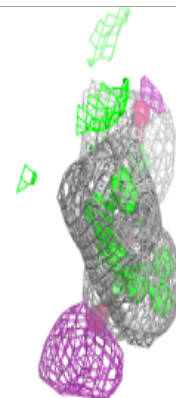
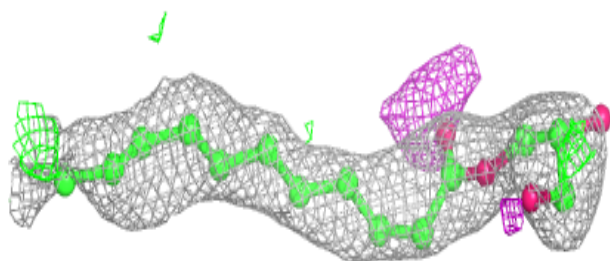
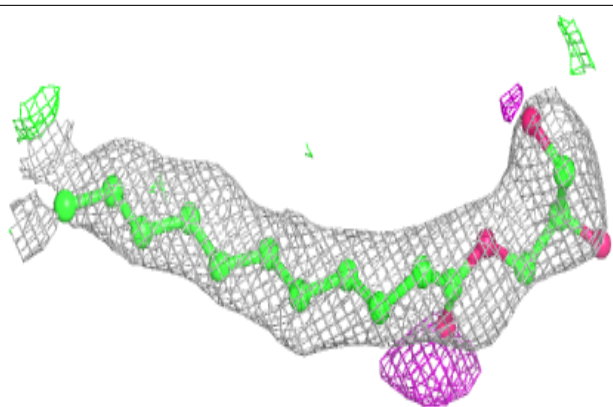
**Electron density around OLC A 411:**

$2mF_o-DF_c$ (at 0.7 rmsd) in gray
 mF_o-DF_c (at 3 rmsd) in purple (negative)
and green (positive)

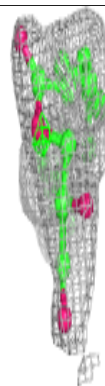
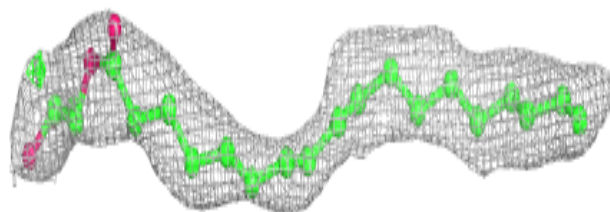
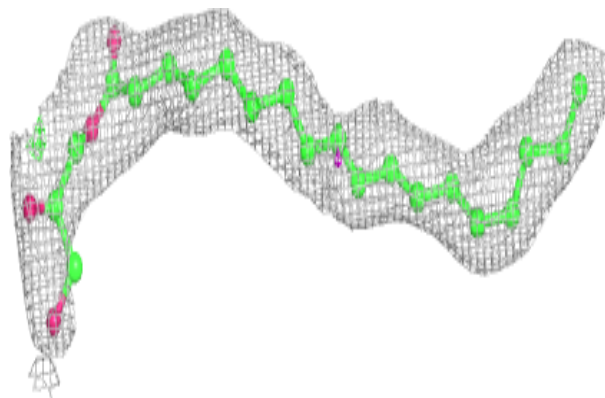


Electron density around OLC B 405:

$2mF_o-DF_c$ (at 0.7 rmsd) in gray
 mF_o-DF_c (at 3 rmsd) in purple (negative)
and green (positive)

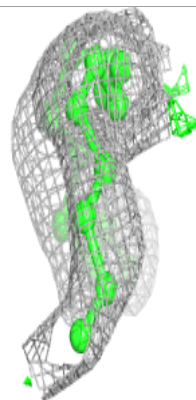
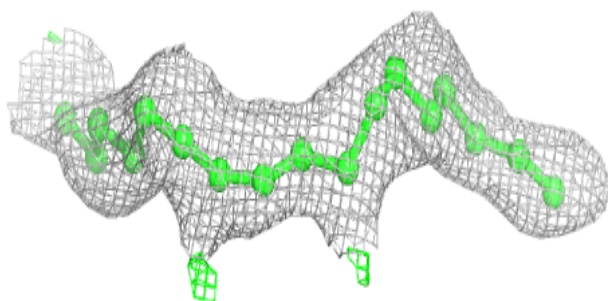
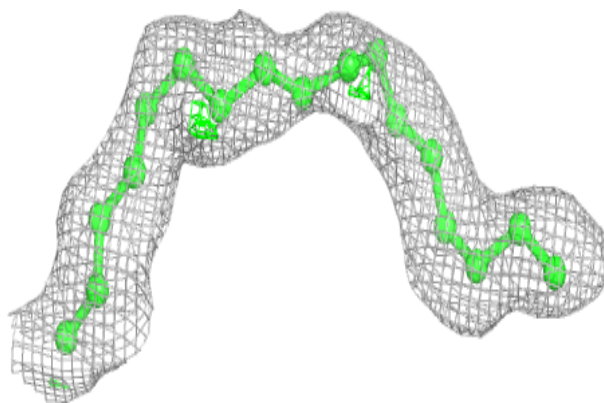
**Electron density around OLC A 412:**

$2mF_o-DF_c$ (at 0.7 rmsd) in gray
 mF_o-DF_c (at 3 rmsd) in purple (negative)
and green (positive)

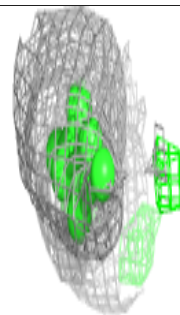
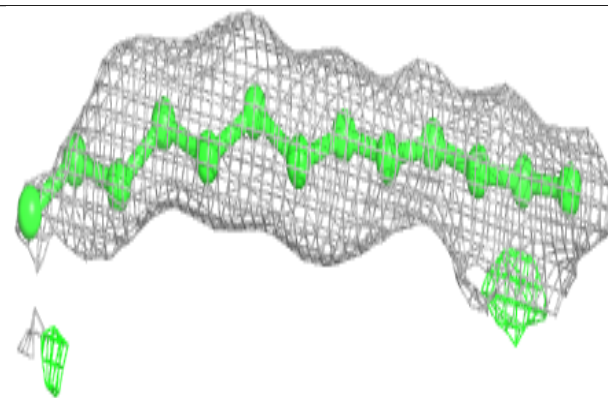
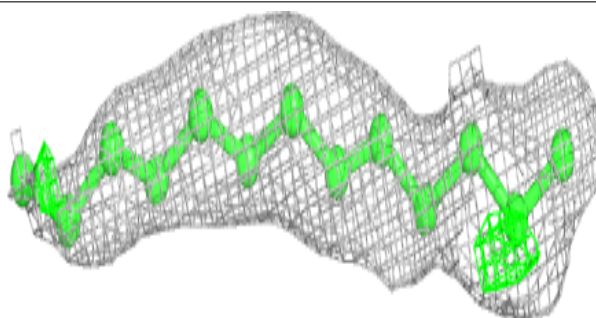


Electron density around OLC B 406:

$2mF_o-DF_c$ (at 0.7 rmsd) in gray
 mF_o-DF_c (at 3 rmsd) in purple (negative)
and green (positive)

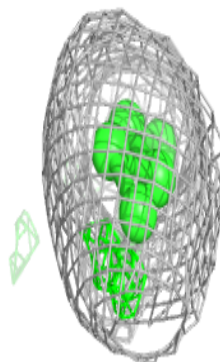
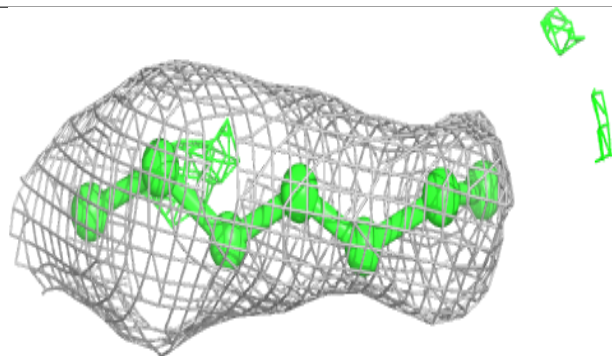
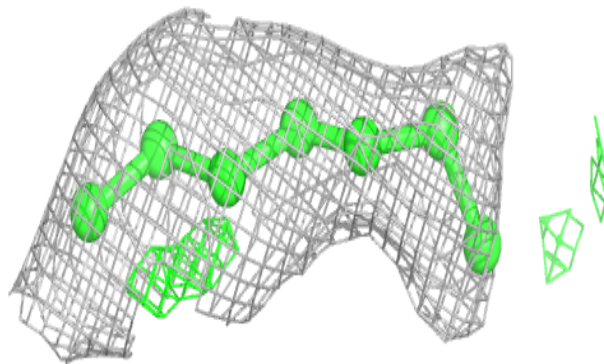
**Electron density around OLC A 414:**

$2mF_o-DF_c$ (at 0.7 rmsd) in gray
 mF_o-DF_c (at 3 rmsd) in purple (negative)
and green (positive)

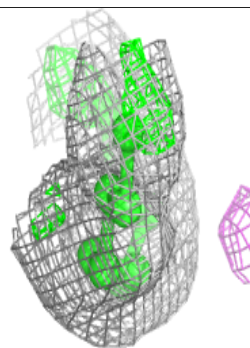
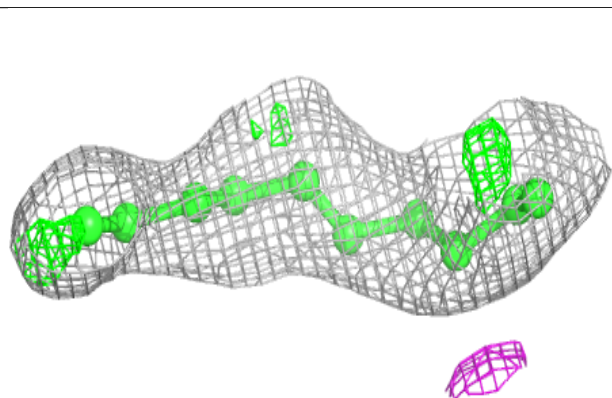
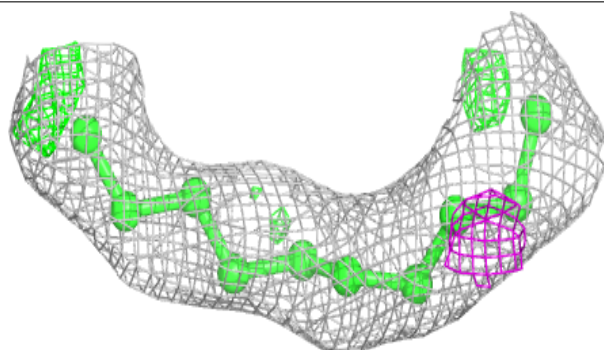


Electron density around OLC B 408:

$2mF_o-DF_c$ (at 0.7 rmsd) in gray
 mF_o-DF_c (at 3 rmsd) in purple (negative)
and green (positive)

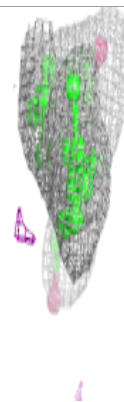
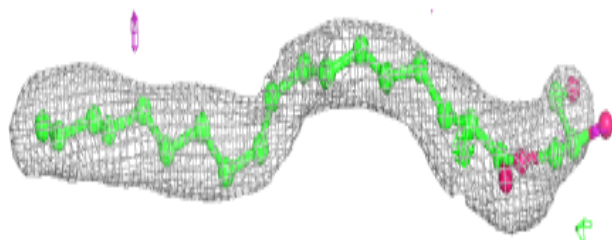
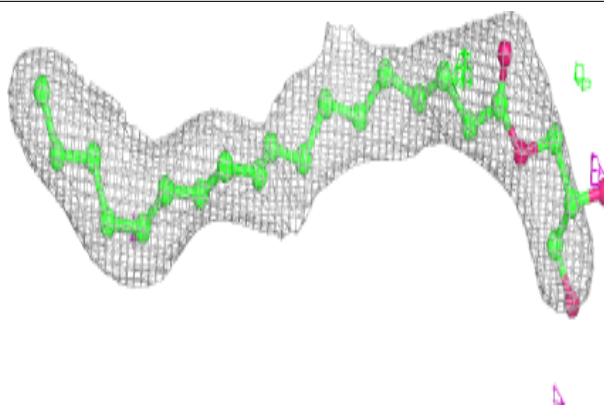
**Electron density around OLC A 408:**

$2mF_o-DF_c$ (at 0.7 rmsd) in gray
 mF_o-DF_c (at 3 rmsd) in purple (negative)
and green (positive)

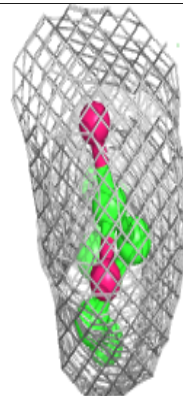
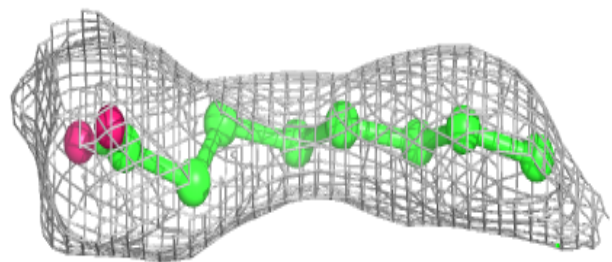
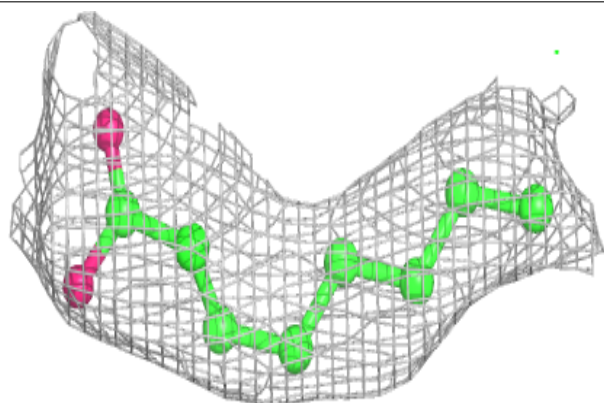


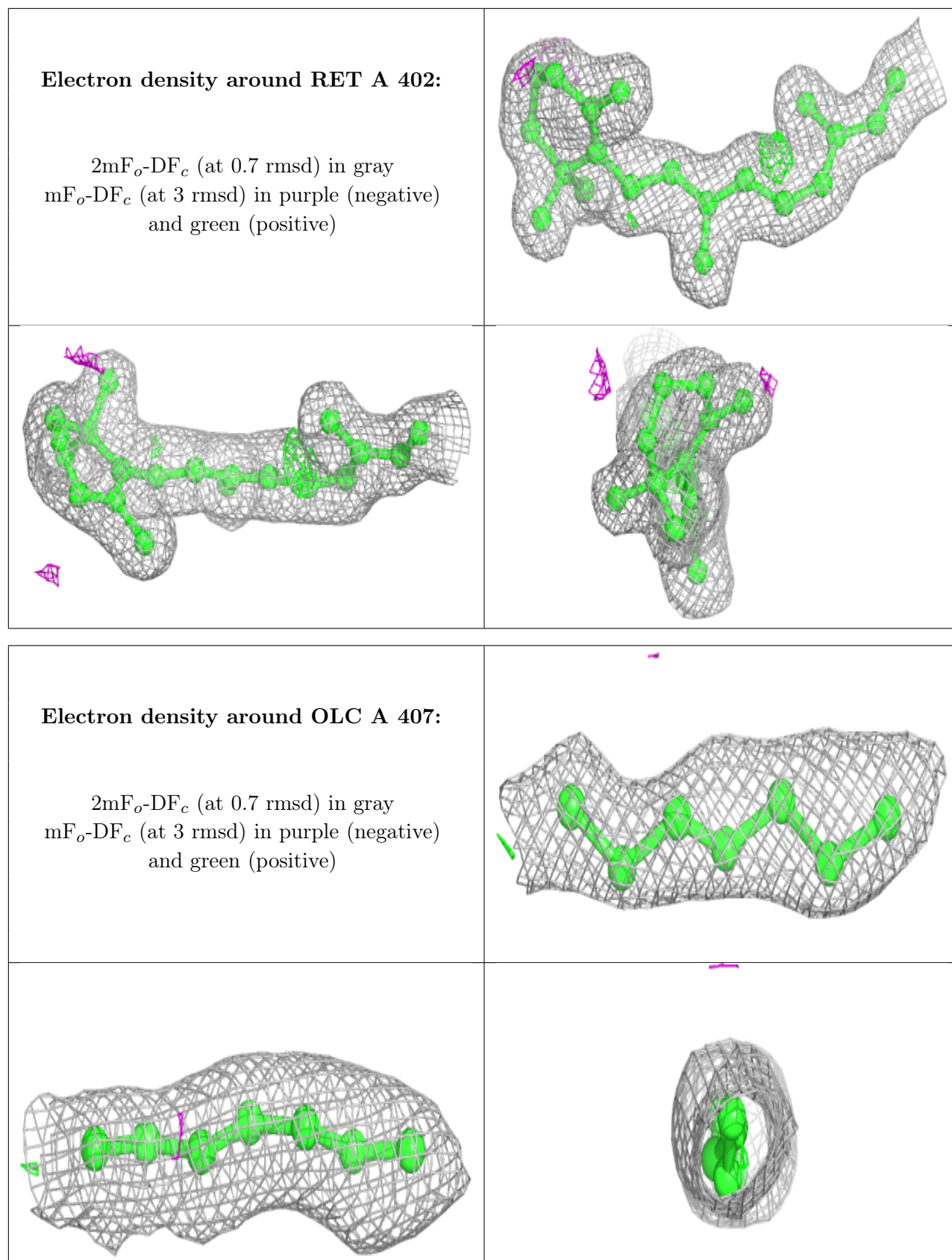
Electron density around OLC A 405:

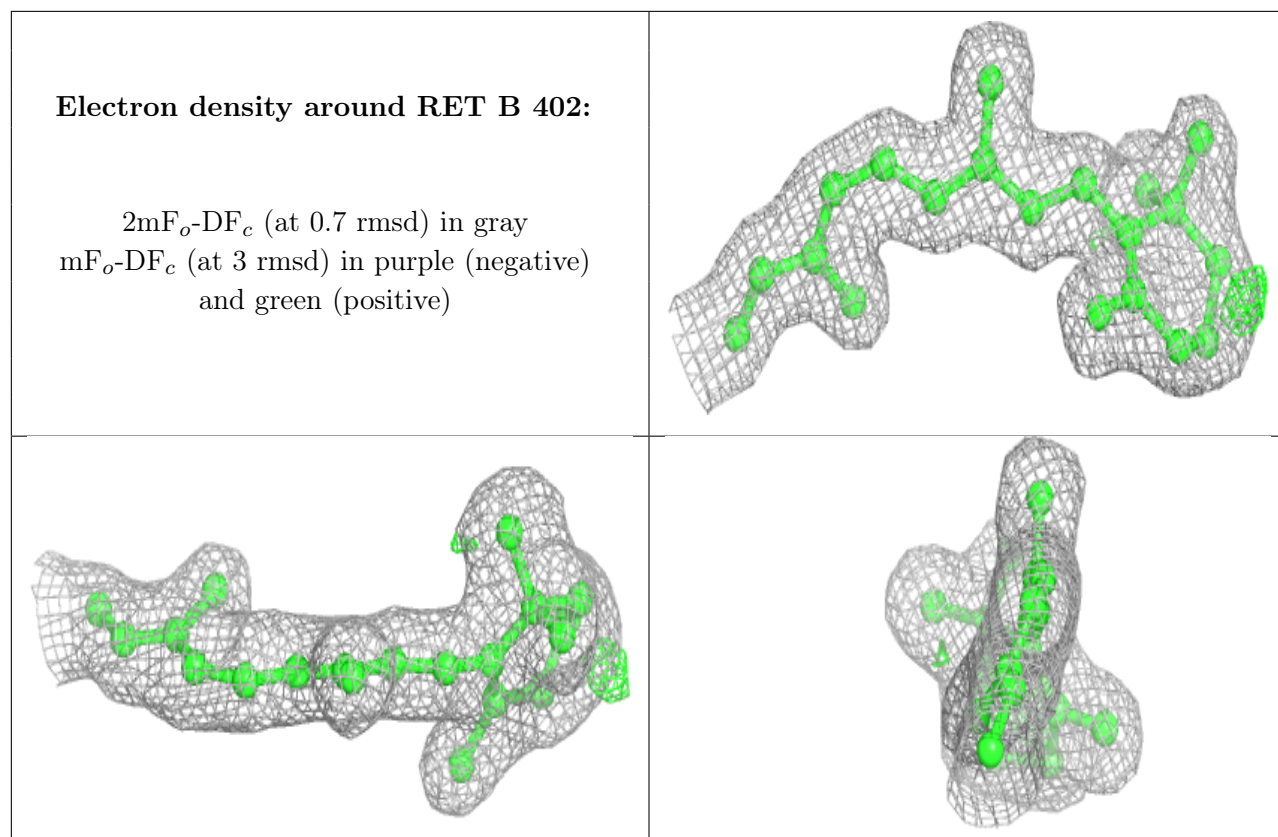
$2mF_o-DF_c$ (at 0.7 rmsd) in gray
 mF_o-DF_c (at 3 rmsd) in purple (negative)
and green (positive)

**Electron density around OLC A 413:**

$2mF_o-DF_c$ (at 0.7 rmsd) in gray
 mF_o-DF_c (at 3 rmsd) in purple (negative)
and green (positive)







6.5 Other polymers [i](#)

There are no such residues in this entry.