



Full wwPDB X-ray Structure Validation Report ⓘ

Nov 20, 2023 – 03:20 pm GMT

PDB ID : 8BO8
Title : X-ray structure of human glutamate carboxypeptidase II (GCPII) in complex with an inhibitor P17
Authors : Motlova, L.; Barinka, C.; Benesova, M.
Deposited on : 2022-11-15
Resolution : 1.55 Å(reported)

This is a Full wwPDB X-ray Structure Validation Report for a publicly released PDB entry.

We welcome your comments at validation@mail.wwpdb.org

A user guide is available at

<https://www.wwpdb.org/validation/2017/XrayValidationReportHelp>

with specific help available everywhere you see the ⓘ symbol.

The types of validation reports are described at

<http://www.wwpdb.org/validation/2017/FAQs#types>.

The following versions of software and data (see [references ⓘ](#)) were used in the production of this report:

MolProbity : 4.02b-467
Mogul : 1.8.4, CSD as541be (2020)
Xtriage (Phenix) : 1.13
EDS : 2.36
buster-report : 1.1.7 (2018)
Percentile statistics : 20191225.v01 (using entries in the PDB archive December 25th 2019)
Refmac : 5.8.0158
CCP4 : 7.0.044 (Gargrove)
Ideal geometry (proteins) : Engh & Huber (2001)
Ideal geometry (DNA, RNA) : Parkinson et al. (1996)
Validation Pipeline (wwPDB-VP) : 2.36

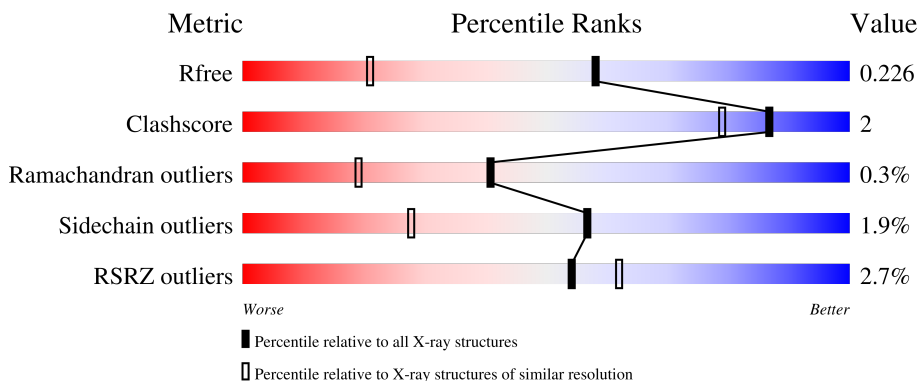
1 Overall quality at a glance

The following experimental techniques were used to determine the structure:

X-RAY DIFFRACTION

The reported resolution of this entry is 1.55 Å.

Percentile scores (ranging between 0-100) for global validation metrics of the entry are shown in the following graphic. The table shows the number of entries on which the scores are based.




Metric	Whole archive (#Entries)	Similar resolution (#Entries, resolution range(Å))
R_{free}	130704	1483 (1.56-1.56)
Clashscore	141614	1529 (1.56-1.56)
Ramachandran outliers	138981	1498 (1.56-1.56)
Sidechain outliers	138945	1495 (1.56-1.56)
RSRZ outliers	127900	1465 (1.56-1.56)

The table below summarises the geometric issues observed across the polymeric chains and their fit to the electron density. The red, orange, yellow and green segments of the lower bar indicate the fraction of residues that contain outliers for ≥ 3 , 2, 1 and 0 types of geometric quality criteria respectively. A grey segment represents the fraction of residues that are not modelled. The numeric value for each fraction is indicated below the corresponding segment, with a dot representing fractions $\leq 5\%$. The upper red bar (where present) indicates the fraction of residues that have poor fit to the electron density. The numeric value is given above the bar.

Mol	Chain	Length	Quality of chain
1	A	707	
2	B	3	
2	F	3	
3	C	5	
4	D	2	

Continued on next page...

Continued from previous page...

Mol	Chain	Length	Quality of chain
5	E	4	 25% 75%

The following table lists non-polymeric compounds, carbohydrate monomers and non-standard residues in protein, DNA, RNA chains that are outliers for geometric or electron-density-fit criteria:

Mol	Type	Chain	Res	Chirality	Geometry	Clashes	Electron density
2	BMA	B	3	-	-	-	X
4	NAG	D	2	-	-	-	X
5	BMA	E	3	-	-	-	X
5	FUC	E	4	-	-	-	X

2 Entry composition i

There are 12 unique types of molecules in this entry. The entry contains 6614 atoms, of which 0 are hydrogens and 0 are deuteriums.

In the tables below, the ZeroOcc column contains the number of atoms modelled with zero occupancy, the AltConf column contains the number of residues with at least one atom in alternate conformation and the Trace column contains the number of residues modelled with at most 2 atoms.

- Molecule 1 is a protein called Glutamate carboxypeptidase 2.

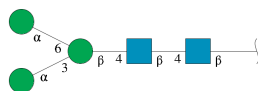
Mol	Chain	Residues	Atoms					ZeroOcc	AltConf	Trace
			Total	C	N	O	S			
1	A	693	5767	3711	957	1077	22	0	53	0

- Molecule 2 is an oligosaccharide called beta-D-mannopyranose-(1-4)-2-acetamido-2-deoxy-beta-D-glucopyranose-(1-4)-2-acetamido-2-deoxy-beta-D-glucopyranose.



Mol	Chain	Residues	Atoms				ZeroOcc	AltConf	Trace
			Total	C	N	O			
2	B	3	39	22	2	15	0	0	0
2	F	3	39	22	2	15	0	0	0

- Molecule 3 is an oligosaccharide called alpha-D-mannopyranose-(1-3)-[alpha-D-mannopyranose-(1-6)]beta-D-mannopyranose-(1-4)-2-acetamido-2-deoxy-beta-D-glucopyranose-(1-4)-2-acetamido-2-deoxy-beta-D-glucopyranose.



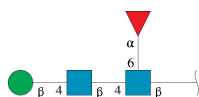
Mol	Chain	Residues	Atoms				ZeroOcc	AltConf	Trace
			Total	C	N	O			
3	C	5	61	34	2	25	0	0	0

- Molecule 4 is an oligosaccharide called 2-acetamido-2-deoxy-beta-D-glucopyranose-(1-4)-2-acetamido-2-deoxy-beta-D-glucopyranose.



Mol	Chain	Residues	Atoms				ZeroOcc	AltConf	Trace
			Total	C	N	O			
4	D	2	28	16	2	10	0	0	0

- Molecule 5 is an oligosaccharide called beta-D-mannopyranose-(1-4)-2-acetamido-2-deoxy-beta-D-glucopyranose-(1-4)-[alpha-L-fucopyranose-(1-6)]2-acetamido-2-deoxy-beta-D-glucopyranose.



Mol	Chain	Residues	Atoms				ZeroOcc	AltConf	Trace
			Total	C	N	O			
5	E	4	49	28	2	19	0	0	0

- Molecule 6 is ZINC ION (three-letter code: ZN) (formula: Zn).

Mol	Chain	Residues	Atoms		ZeroOcc	AltConf
6	A	2	Total	Zn	0	0
			2	2		

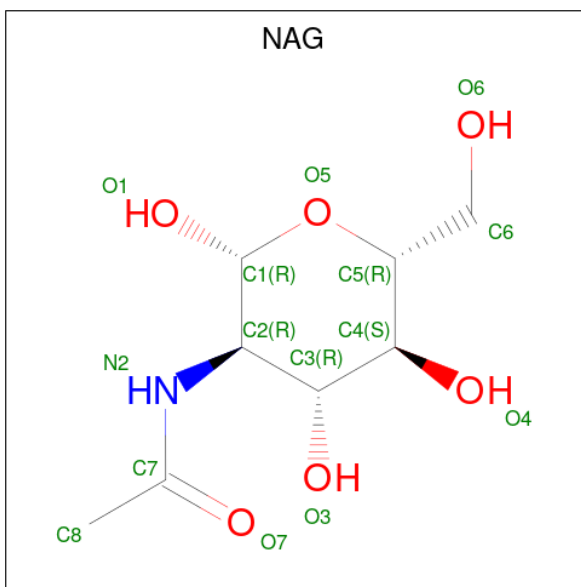
- Molecule 7 is CALCIUM ION (three-letter code: CA) (formula: Ca).

Mol	Chain	Residues	Atoms		ZeroOcc	AltConf
7	A	1	Total	Ca	0	0
			1	1		

- Molecule 8 is CHLORIDE ION (three-letter code: CL) (formula: Cl).

Mol	Chain	Residues	Atoms		ZeroOcc	AltConf
8	A	1	Total	Cl	0	0
			1	1		

- Molecule 9 is 2-acetamido-2-deoxy-beta-D-glucopyranose (three-letter code: NAG) (formula: C₈H₁₅NO₆).

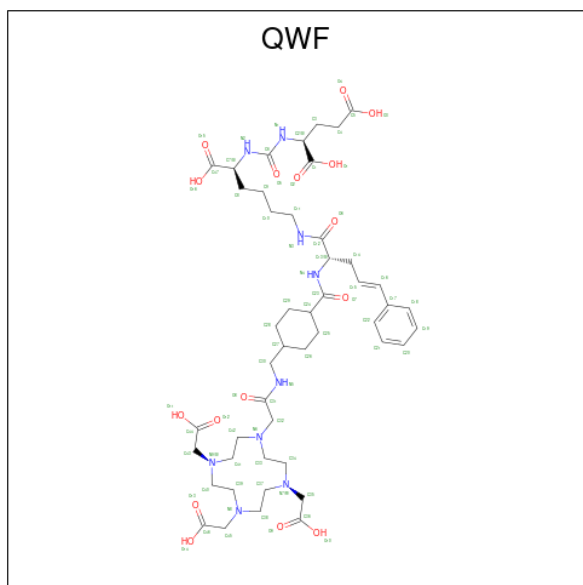


Mol	Chain	Residues	Atoms				ZeroOcc	AltConf
			Total	C	N	O		
9	A	1	14	8	1	5	0	0
9	A	1	Total	C	N	O	0	0
			14	8	1	5		

- Molecule 10 is SODIUM ION (three-letter code: NA) (formula: Na).

Mol	Chain	Residues	Atoms		ZeroOcc	AltConf
			Total	Na		
10	A	1	1	1	0	0

- Molecule 11 is (2 {S})-2-[[2 {S})-1-oxidanyl-1-oxidanylidene-6-[[({E},2 {S})-5-phenyl-2-[[4-[[2-[4,7,10-tris(2-hydroxy-2-oxoethyl)-1,4,7,10-tetrazacyclododec-1-yl]ethanoylamino]methyl]cyclohexyl]carbonylamino]pent-4-enoyl]amino]hexan-2-yl]carbonylamino]pentanedioic acid (three-letter code: QWF) (formula: C₄₇H₇₁N₉O₁₆) (labeled as "Ligand of Interest" by depositor).



Mol	Chain	Residues	Atoms				ZeroOcc	AltConf
			Total	C	N	O		
11	A	1	72	47	9	16	0	0

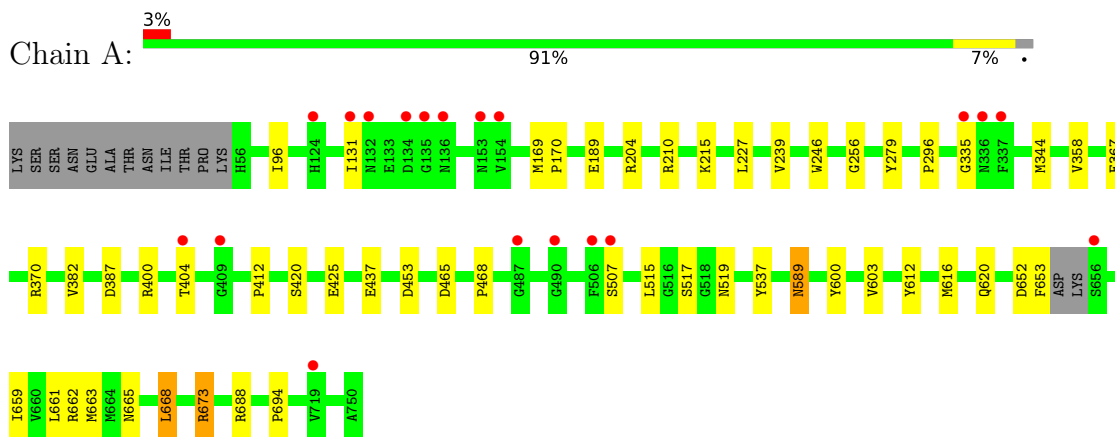
- Molecule 12 is water.

Mol	Chain	Residues	Atoms		ZeroOcc	AltConf
			Total	O		
12	A	525	526	526	0	1

3 Residue-property plots [i](#)

These plots are drawn for all protein, RNA, DNA and oligosaccharide chains in the entry. The first graphic for a chain summarises the proportions of the various outlier classes displayed in the second graphic. The second graphic shows the sequence view annotated by issues in geometry and electron density. Residues are color-coded according to the number of geometric quality criteria for which they contain at least one outlier: green = 0, yellow = 1, orange = 2 and red = 3 or more. A red dot above a residue indicates a poor fit to the electron density ($RSRZ > 2$). Stretches of 2 or more consecutive residues without any outlier are shown as a green connector. Residues present in the sample, but not in the model, are shown in grey.

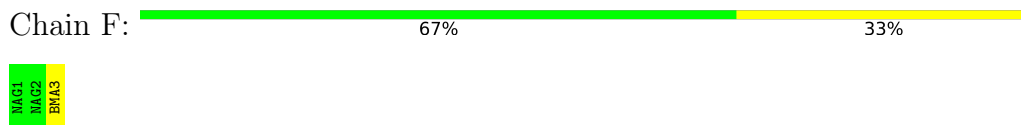
- Molecule 1: Glutamate carboxypeptidase 2



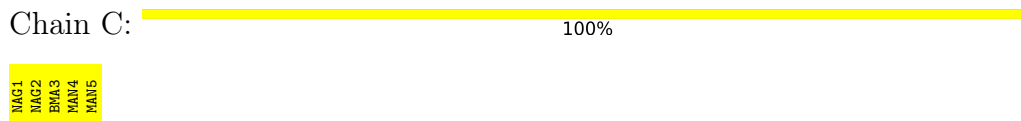
- Molecule 2: beta-D-mannopyranose-(1-4)-2-acetamido-2-deoxy-beta-D-glucopyranose-(1-4)-2-acetamido-2-deoxy-beta-D-glucopyranose



- Molecule 2: beta-D-mannopyranose-(1-4)-2-acetamido-2-deoxy-beta-D-glucopyranose-(1-4)-2-acetamido-2-deoxy-beta-D-glucopyranose



- Molecule 3: alpha-D-mannopyranose-(1-3)-[alpha-D-mannopyranose-(1-6)]beta-D-mannopyranose-(1-4)-2-acetamido-2-deoxy-beta-D-glucopyranose-(1-4)-2-acetamido-2-deoxy-beta-D-glucopyranose




- Molecule 4: 2-acetamido-2-deoxy-beta-D-glucopyranose-(1-4)-2-acetamido-2-deoxy-beta-D-glucopyranose

Chain D:  100%

MAG1
MAG2

- Molecule 5: beta-D-mannopyranose-(1-4)-2-acetamido-2-deoxy-beta-D-glucopyranose-(1-4)-[alpha-L-fucopyranose-(1-6)]2-acetamido-2-deoxy-beta-D-glucopyranose

Chain E:  25% 75%

MAG1
MAG2
BMA3
FUC4

4 Data and refinement statistics

Property	Value	Source
Space group	I 2 2 2	Depositor
Cell constants a, b, c, α , β , γ	101.89Å 130.29Å 159.70Å 90.00° 90.00° 90.00°	Depositor
Resolution (Å)	50.01 – 1.55 47.18 – 1.55	Depositor EDS
% Data completeness (in resolution range)	99.8 (50.01-1.55) 99.8 (47.18-1.55)	Depositor EDS
R_{merge}	0.10	Depositor
R_{sym}	0.11	Depositor
$\langle I/\sigma(I) \rangle$ ¹	0.97 (at 1.55Å)	Xtrriage
Refinement program	REFMAC 5.8.0135	Depositor
R, R_{free}	0.202 , 0.226 0.202 , 0.226	Depositor DCC
R_{free} test set	7719 reflections (5.05%)	wwPDB-VP
Wilson B-factor (Å ²)	21.7	Xtrriage
Anisotropy	0.567	Xtrriage
Bulk solvent k_{sol} (e/Å ³), B_{sol} (Å ²)	0.35 , 50.4	EDS
L-test for twinning ²	$\langle L \rangle = 0.50$, $\langle L^2 \rangle = 0.33$	Xtrriage
Estimated twinning fraction	No twinning to report.	Xtrriage
F_o, F_c correlation	0.97	EDS
Total number of atoms	6614	wwPDB-VP
Average B, all atoms (Å ²)	32.0	wwPDB-VP

Xtrriage's analysis on translational NCS is as follows: *The largest off-origin peak in the Patterson function is 3.91% of the height of the origin peak. No significant pseudotranslation is detected.*

¹Intensities estimated from amplitudes.

²Theoretical values of $\langle |L| \rangle$, $\langle L^2 \rangle$ for acentric reflections are 0.5, 0.333 respectively for untwinned datasets, and 0.375, 0.2 for perfectly twinned datasets.

5 Model quality

5.1 Standard geometry

Bond lengths and bond angles in the following residue types are not validated in this section: MAN, CL, ZN, CA, NAG, QWF, FUC, NA, BMA

The Z score for a bond length (or angle) is the number of standard deviations the observed value is removed from the expected value. A bond length (or angle) with $|Z| > 5$ is considered an outlier worth inspection. RMSZ is the root-mean-square of all Z scores of the bond lengths (or angles).

Mol	Chain	Bond lengths		Bond angles	
		RMSZ	# Z >5	RMSZ	# Z >5
1	A	0.77	1/6084 (0.0%)	0.81	7/8238 (0.1%)

All (1) bond length outliers are listed below:

Mol	Chain	Res	Type	Atoms	Z	Observed(Å)	Ideal(Å)
1	A	425	GLU	CD-OE2	-5.27	1.19	1.25

All (7) bond angle outliers are listed below:

Mol	Chain	Res	Type	Atoms	Z	Observed(°)	Ideal(°)
1	A	387	ASP	CB-CG-OD1	-9.18	110.04	118.30
1	A	465	ASP	CB-CG-OD1	6.88	124.49	118.30
1	A	673	ARG	NE-CZ-NH2	-6.70	116.95	120.30
1	A	387	ASP	CB-CG-OD2	5.95	123.65	118.30
1	A	453	ASP	CB-CG-OD1	5.73	123.46	118.30
1	A	370	ARG	NE-CZ-NH1	5.47	123.03	120.30
1	A	515	LEU	CB-CG-CD1	-5.07	102.37	111.00

There are no chirality outliers.

There are no planarity outliers.

5.2 Too-close contacts

In the following table, the Non-H and H(model) columns list the number of non-hydrogen atoms and hydrogen atoms in the chain respectively. The H(added) column lists the number of hydrogen atoms added and optimized by MolProbity. The Clashes column lists the number of clashes within the asymmetric unit, whereas Symm-Clashes lists symmetry-related clashes.

Mol	Chain	Non-H	H(model)	H(added)	Clashes	Symm-Clashes
1	A	5767	0	5674	25	0
2	B	39	0	34	0	0
2	F	39	0	34	0	0
3	C	61	0	52	0	0
4	D	28	0	25	0	0
5	E	49	0	43	0	0
6	A	2	0	0	0	0
7	A	1	0	0	0	0
8	A	1	0	0	0	0
9	A	28	0	26	1	0
10	A	1	0	0	0	0
11	A	72	0	0	0	0
12	A	526	0	0	5	0
All	All	6614	0	5888	25	0

The all-atom clashscore is defined as the number of clashes found per 1000 atoms (including hydrogen atoms). The all-atom clashscore for this structure is 2.

All (25) close contacts within the same asymmetric unit are listed below, sorted by their clash magnitude.

Atom-1	Atom-2	Interatomic distance (Å)	Clash overlap (Å)
1:A:437[B]:GLU:OE1	12:A:902:HOH:O	1.96	0.83
1:A:367:GLU:OE1	1:A:662[A]:ARG:NH1	2.32	0.60
1:A:131[B]:ILE:O	1:A:131[B]:ILE:HG23	2.04	0.57
1:A:688[B]:ARG:NH1	12:A:906:HOH:O	2.38	0.51
1:A:412:PRO:HA	1:A:589:ASN:OD1	2.11	0.50
1:A:612:TYR:CZ	1:A:616:MET:HG3	2.47	0.49
1:A:400:ARG:O	1:A:404[B]:THR:HG23	2.12	0.48
1:A:517[B]:SER:OG	1:A:694:PRO:HG3	2.13	0.48
1:A:131[B]:ILE:O	1:A:131[B]:ILE:CG2	2.62	0.47
1:A:169:MET:HA	1:A:344:MET:O	2.14	0.47
1:A:468:PRO:CG	1:A:603:VAL:HG21	2.45	0.46
1:A:517[A]:SER:HB2	1:A:694:PRO:HG3	1.97	0.46
1:A:665:ASN:HA	1:A:668[B]:LEU:HD12	1.98	0.46
1:A:246:TRP:CD1	9:A:806:NAG:H83	2.52	0.44
1:A:659[B]:ILE:O	1:A:663[B]:MET:HG3	2.17	0.44
1:A:96[B]:ILE:HD13	12:A:985:HOH:O	2.18	0.43
1:A:653:PHE:HE2	1:A:661[A]:LEU:HB2	1.81	0.43
1:A:215[B]:LYS:HE2	12:A:935:HOH:O	2.18	0.42
1:A:358:VAL:HB	1:A:420:SER:HB3	2.01	0.42
1:A:170:PRO:HD2	1:A:344:MET:HB2	2.02	0.42
1:A:620:GLN:NE2	12:A:916:HOH:O	2.52	0.41

Continued on next page...

Continued from previous page...

Atom-1	Atom-2	Interatomic distance (Å)	Clash overlap (Å)
1:A:468:PRO:HG3	1:A:603:VAL:HG21	2.03	0.41
1:A:227:LEU:O	1:A:296:PRO:HA	2.22	0.40
1:A:210:ARG:CZ	1:A:256:GLY:HA3	2.51	0.40

There are no symmetry-related clashes.

5.3 Torsion angles [i](#)

5.3.1 Protein backbone [i](#)

In the following table, the Percentiles column shows the percent Ramachandran outliers of the chain as a percentile score with respect to all X-ray entries followed by that with respect to entries of similar resolution.

The Analysed column shows the number of residues for which the backbone conformation was analysed, and the total number of residues.

Mol	Chain	Analysed	Favoured	Allowed	Outliers	Percentiles
1	A	741/707 (105%)	725 (98%)	14 (2%)	2 (0%)	41 19

All (2) Ramachandran outliers are listed below:

Mol	Chain	Res	Type
1	A	382	VAL
1	A	335	GLY

5.3.2 Protein sidechains [i](#)

In the following table, the Percentiles column shows the percent sidechain outliers of the chain as a percentile score with respect to all X-ray entries followed by that with respect to entries of similar resolution.

The Analysed column shows the number of residues for which the sidechain conformation was analysed, and the total number of residues.

Mol	Chain	Analysed	Rotameric	Outliers	Percentiles
1	A	643/603 (107%)	630 (98%)	13 (2%)	55 26

All (13) residues with a non-rotameric sidechain are listed below:

Mol	Chain	Res	Type
1	A	189	GLU
1	A	204	ARG
1	A	239[A]	VAL
1	A	239[B]	VAL
1	A	507	SER
1	A	519	ASN
1	A	537	TYR
1	A	589	ASN
1	A	600	TYR
1	A	652	ASP
1	A	668[A]	LEU
1	A	668[B]	LEU
1	A	673	ARG

Sometimes sidechains can be flipped to improve hydrogen bonding and reduce clashes. There are no such sidechains identified.

5.3.3 RNA [i](#)

There are no RNA molecules in this entry.

5.4 Non-standard residues in protein, DNA, RNA chains [i](#)

There are no non-standard protein/DNA/RNA residues in this entry.

5.5 Carbohydrates [i](#)

17 monosaccharides are modelled in this entry.

In the following table, the Counts columns list the number of bonds (or angles) for which Mogul statistics could be retrieved, the number of bonds (or angles) that are observed in the model and the number of bonds (or angles) that are defined in the Chemical Component Dictionary. The Link column lists molecule types, if any, to which the group is linked. The Z score for a bond length (or angle) is the number of standard deviations the observed value is removed from the expected value. A bond length (or angle) with $|Z| > 2$ is considered an outlier worth inspection. RMSZ is the root-mean-square of all Z scores of the bond lengths (or angles).

Mol	Type	Chain	Res	Link	Bond lengths			Bond angles		
					Counts	RMSZ	$\# Z > 2$	Counts	RMSZ	$\# Z > 2$
2	NAG	B	1	2,1	14,14,15	0.33	0	17,19,21	1.14	1 (5%)
2	NAG	B	2	2	14,14,15	0.58	0	17,19,21	1.37	2 (11%)
2	BMA	B	3	2	11,11,12	0.86	0	15,15,17	1.11	1 (6%)

Mol	Type	Chain	Res	Link	Bond lengths			Bond angles		
					Counts	RMSZ	# Z > 2	Counts	RMSZ	# Z > 2
3	NAG	C	1	3,1	14,14,15	0.79	0	17,19,21	1.66	3 (17%)
3	NAG	C	2	3	14,14,15	0.46	0	17,19,21	1.13	1 (5%)
3	BMA	C	3	3	11,11,12	0.49	0	15,15,17	1.11	2 (13%)
3	MAN	C	4	3	11,11,12	0.71	0	15,15,17	1.47	2 (13%)
3	MAN	C	5	3	11,11,12	0.59	0	15,15,17	1.03	1 (6%)
4	NAG	D	1	4,1	14,14,15	0.81	0	17,19,21	1.80	5 (29%)
4	NAG	D	2	4	14,14,15	0.63	0	17,19,21	1.17	2 (11%)
5	NAG	E	1	5,1	14,14,15	0.78	0	17,19,21	1.74	3 (17%)
5	NAG	E	2	5	14,14,15	0.72	0	17,19,21	1.40	3 (17%)
5	BMA	E	3	5	11,11,12	0.82	0	15,15,17	2.00	3 (20%)
5	FUC	E	4	5	10,10,11	0.87	0	14,14,16	0.82	0
2	NAG	F	1	2,1	14,14,15	0.60	0	17,19,21	1.03	0
2	NAG	F	2	2	14,14,15	0.46	0	17,19,21	0.62	0
2	BMA	F	3	2	11,11,12	0.65	0	15,15,17	1.41	2 (13%)

In the following table, the Chirals column lists the number of chiral outliers, the number of chiral centers analysed, the number of these observed in the model and the number defined in the Chemical Component Dictionary. Similar counts are reported in the Torsion and Rings columns. '-' means no outliers of that kind were identified.

Mol	Type	Chain	Res	Link	Chirals	Torsions	Rings
2	NAG	B	1	2,1	-	0/6/23/26	0/1/1/1
2	NAG	B	2	2	-	0/6/23/26	0/1/1/1
2	BMA	B	3	2	-	1/2/19/22	0/1/1/1
3	NAG	C	1	3,1	-	0/6/23/26	0/1/1/1
3	NAG	C	2	3	-	2/6/23/26	0/1/1/1
3	BMA	C	3	3	-	2/2/19/22	0/1/1/1
3	MAN	C	4	3	-	0/2/19/22	0/1/1/1
3	MAN	C	5	3	-	2/2/19/22	0/1/1/1
4	NAG	D	1	4,1	-	2/6/23/26	0/1/1/1
4	NAG	D	2	4	-	0/6/23/26	0/1/1/1
5	NAG	E	1	5,1	-	2/6/23/26	0/1/1/1
5	NAG	E	2	5	-	2/6/23/26	0/1/1/1
5	BMA	E	3	5	-	2/2/19/22	0/1/1/1
5	FUC	E	4	5	-	-	0/1/1/1
2	NAG	F	1	2,1	-	0/6/23/26	0/1/1/1
2	NAG	F	2	2	-	0/6/23/26	0/1/1/1
2	BMA	F	3	2	-	2/2/19/22	0/1/1/1

There are no bond length outliers.

All (31) bond angle outliers are listed below:

Mol	Chain	Res	Type	Atoms	Z	Observed($^{\circ}$)	Ideal($^{\circ}$)
5	E	1	NAG	C2-N2-C7	4.96	129.96	122.90
5	E	3	BMA	C3-C4-C5	4.55	118.36	110.24
5	E	3	BMA	C1-O5-C5	4.44	118.20	112.19
3	C	1	NAG	O5-C1-C2	-3.84	105.22	111.29
2	B	2	NAG	C4-C3-C2	3.60	116.29	111.02
4	D	1	NAG	C4-C3-C2	3.59	116.27	111.02
3	C	2	NAG	C1-O5-C5	3.54	116.98	112.19
4	D	1	NAG	C1-C2-N2	-3.38	104.71	110.49
3	C	1	NAG	C1-O5-C5	3.36	116.74	112.19
5	E	2	NAG	C4-C3-C2	3.34	115.91	111.02
2	F	3	BMA	C3-C4-C5	3.22	115.98	110.24
5	E	1	NAG	C8-C7-N2	3.20	121.52	116.10
4	D	2	NAG	C2-N2-C7	3.03	127.22	122.90
2	F	3	BMA	C1-O5-C5	2.99	116.24	112.19
4	D	1	NAG	C1-O5-C5	2.79	115.97	112.19
5	E	2	NAG	C2-N2-C7	2.76	126.83	122.90
3	C	3	BMA	C1-O5-C5	2.65	115.78	112.19
2	B	1	NAG	C1-O5-C5	2.63	115.76	112.19
2	B	2	NAG	C1-O5-C5	2.57	115.67	112.19
5	E	1	NAG	O7-C7-N2	-2.52	117.31	121.95
5	E	2	NAG	O5-C5-C6	2.37	110.92	107.20
5	E	3	BMA	O5-C5-C4	2.29	116.40	110.83
4	D	1	NAG	O5-C5-C6	2.28	110.78	107.20
3	C	1	NAG	O5-C5-C6	2.28	110.78	107.20
3	C	4	MAN	O5-C5-C6	2.27	110.77	107.20
4	D	2	NAG	C1-O5-C5	2.19	115.15	112.19
4	D	1	NAG	O4-C4-C3	-2.17	105.34	110.35
2	B	3	BMA	C3-C4-C5	2.11	114.01	110.24
3	C	4	MAN	O3-C3-C2	2.11	114.04	109.99
3	C	5	MAN	O5-C5-C6	2.08	110.46	107.20
3	C	3	BMA	O3-C3-C2	-2.02	106.13	109.99

There are no chirality outliers.

All (17) torsion outliers are listed below:

Mol	Chain	Res	Type	Atoms
5	E	3	BMA	O5-C5-C6-O6
5	E	3	BMA	C4-C5-C6-O6
4	D	1	NAG	C4-C5-C6-O6
3	C	5	MAN	C4-C5-C6-O6

Continued on next page...

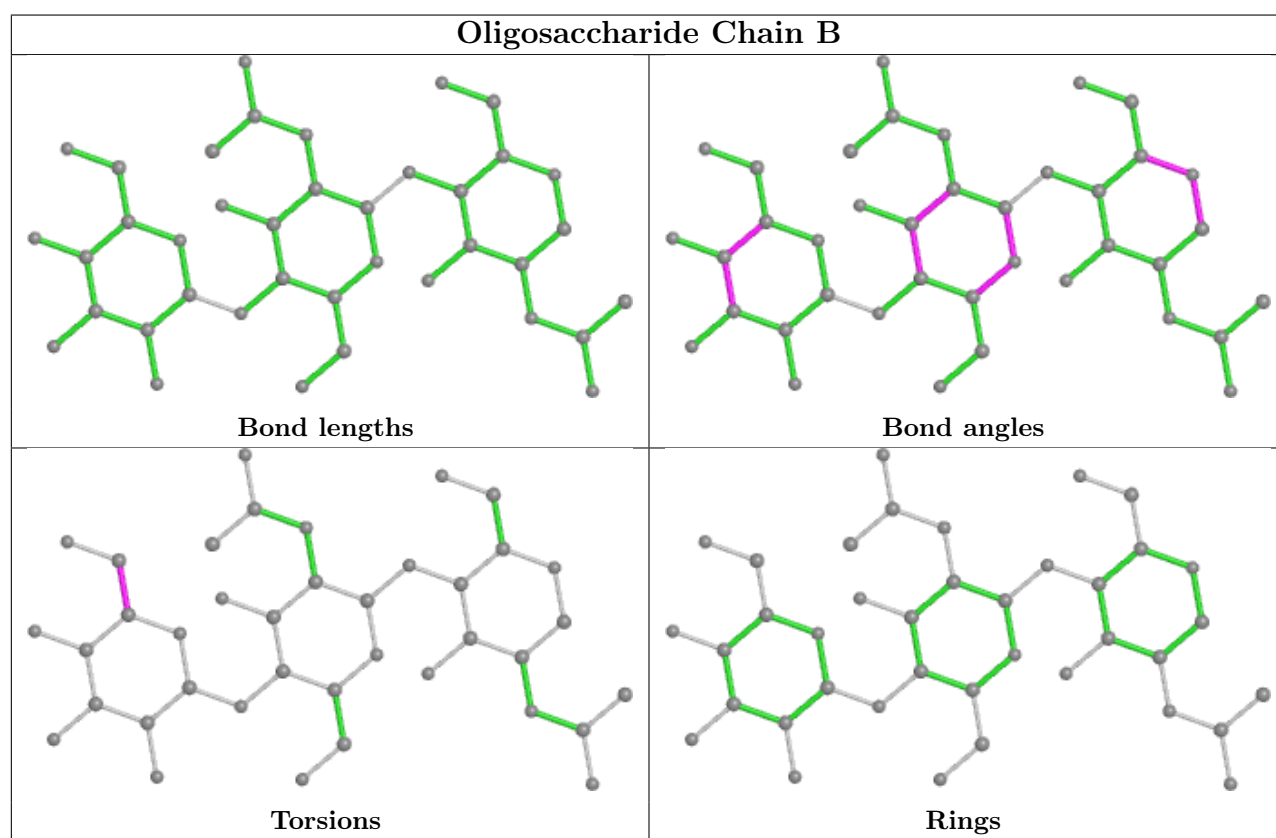
Continued from previous page...

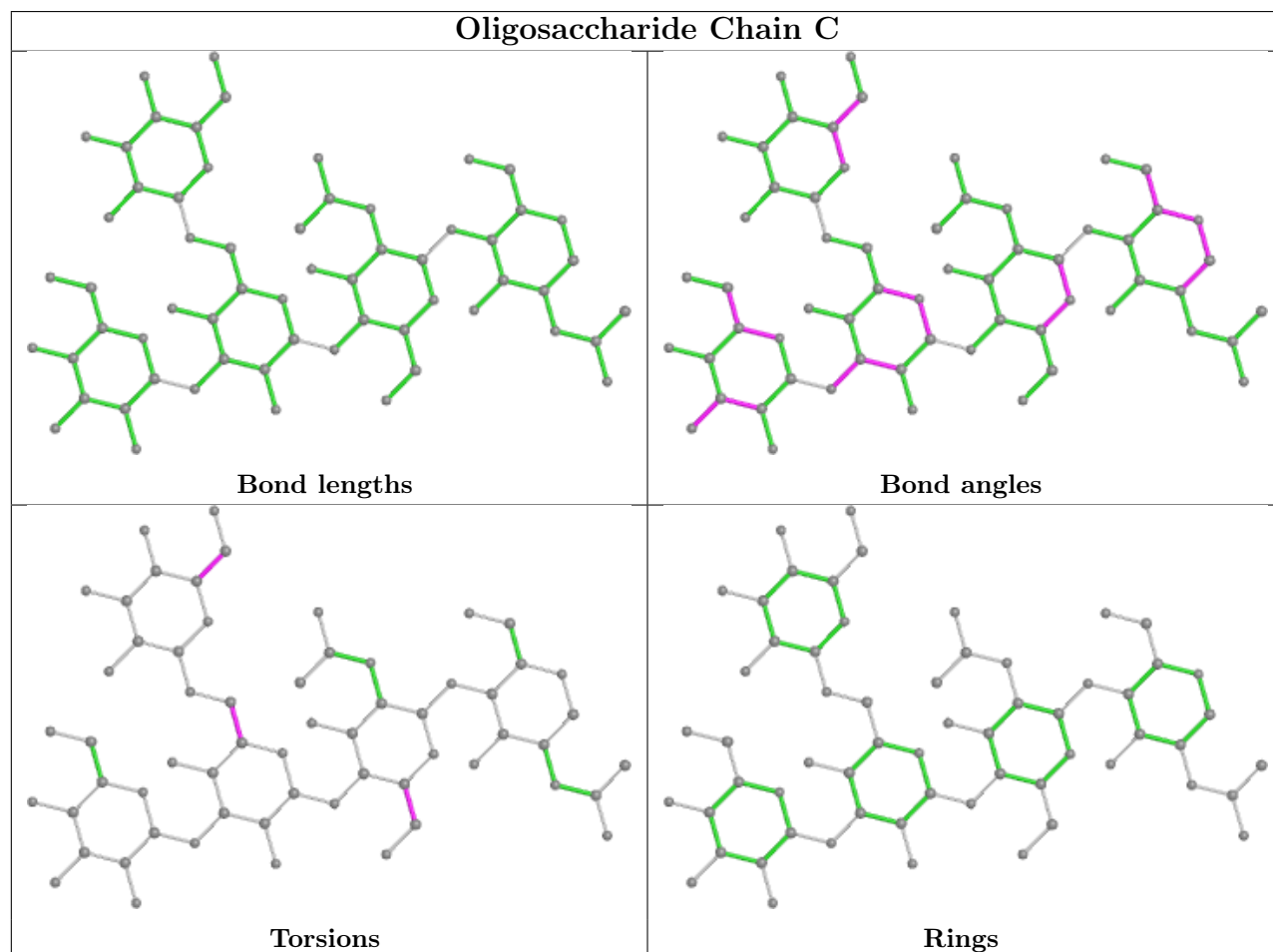
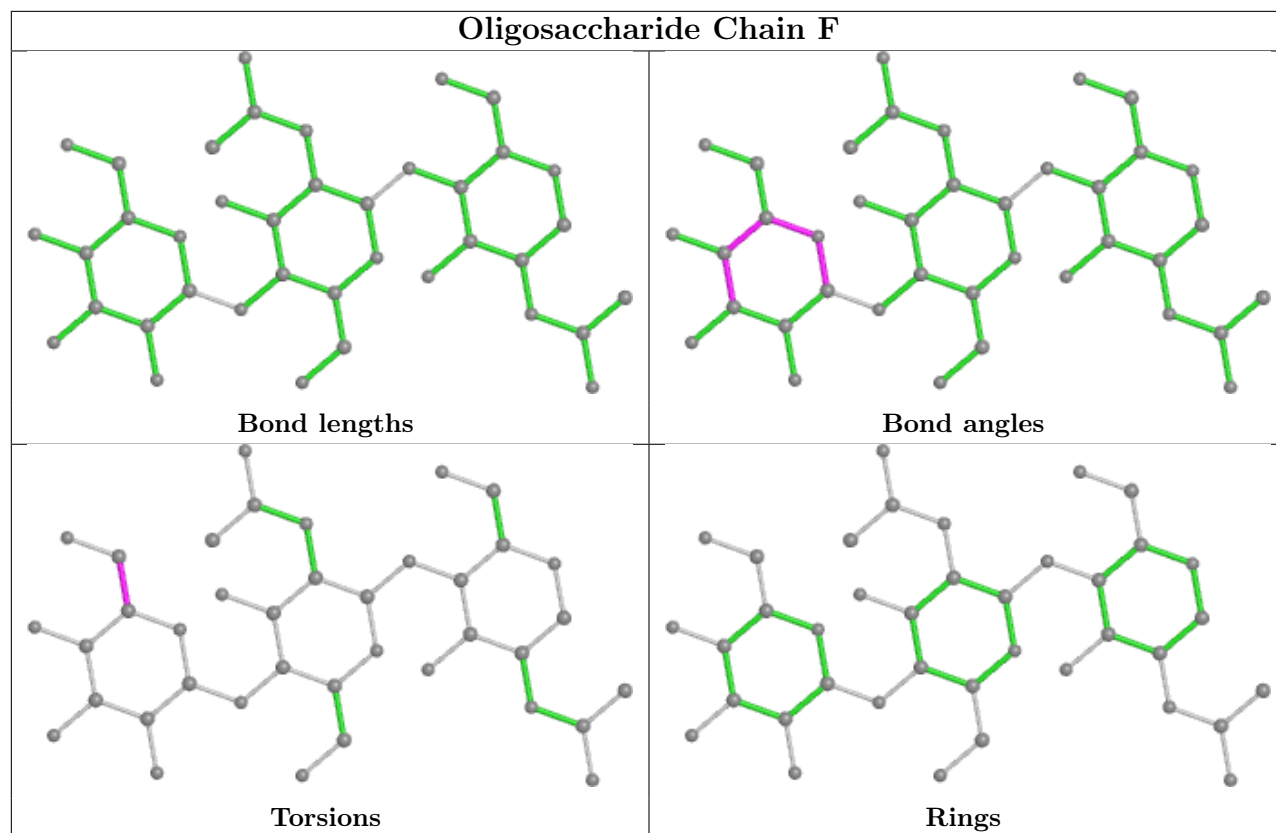
Mol	Chain	Res	Type	Atoms
5	E	1	NAG	C8-C7-N2-C2
5	E	1	NAG	O7-C7-N2-C2
3	C	3	BMA	O5-C5-C6-O6
4	D	1	NAG	O5-C5-C6-O6
5	E	2	NAG	C4-C5-C6-O6
5	E	2	NAG	O5-C5-C6-O6
2	F	3	BMA	C4-C5-C6-O6
3	C	5	MAN	O5-C5-C6-O6
3	C	3	BMA	C4-C5-C6-O6
3	C	2	NAG	C4-C5-C6-O6
2	F	3	BMA	O5-C5-C6-O6
2	B	3	BMA	O5-C5-C6-O6
3	C	2	NAG	O5-C5-C6-O6

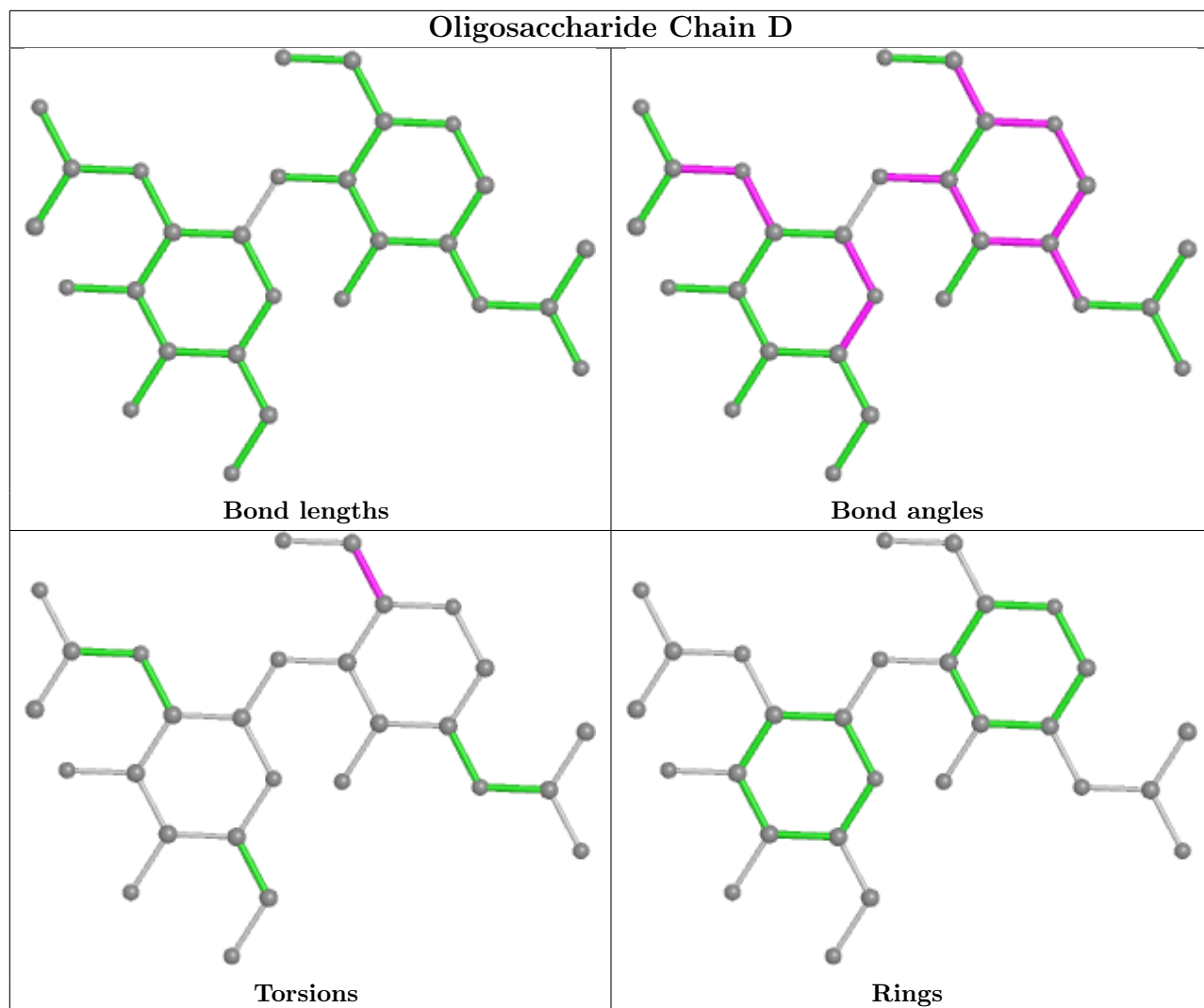
There are no ring outliers.

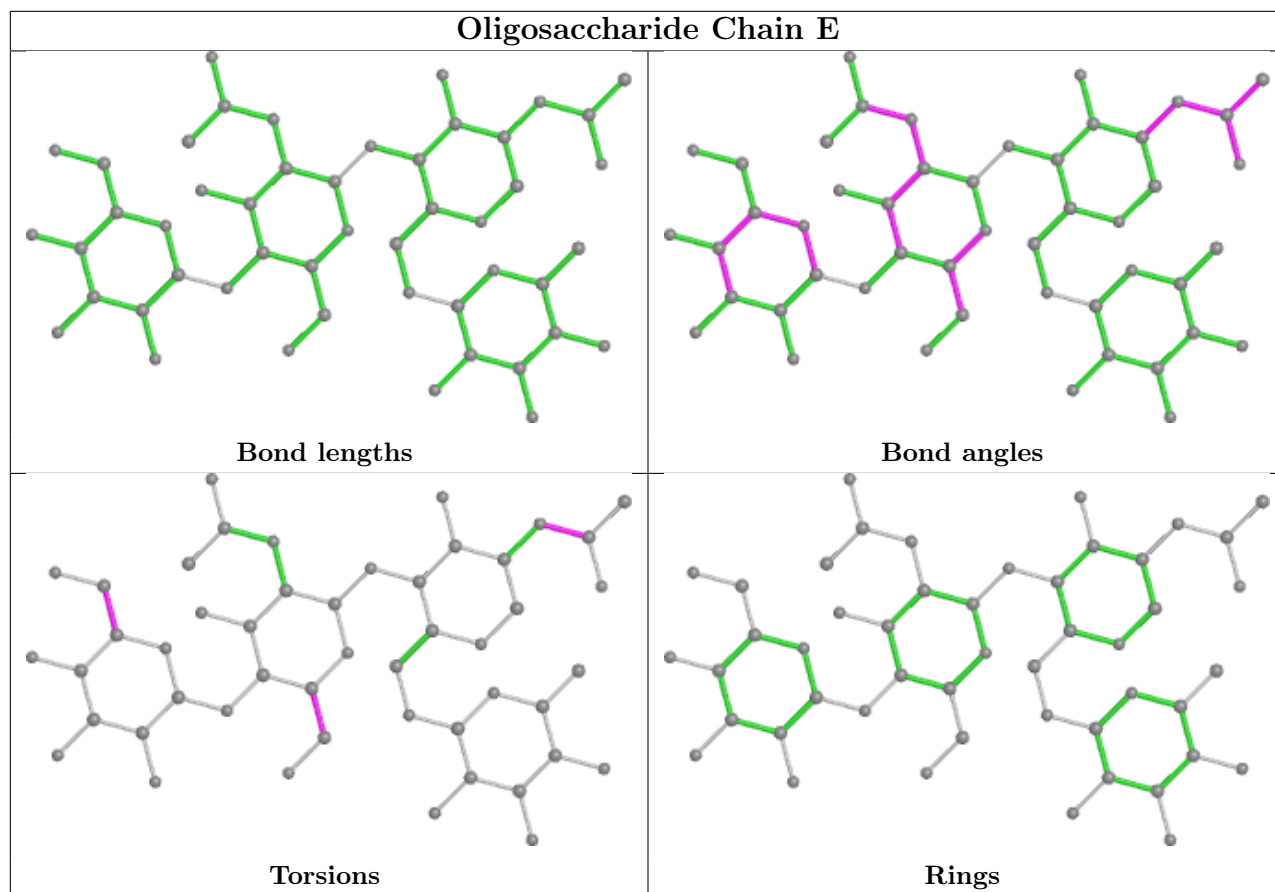
No monomer is involved in short contacts.

The following is a two-dimensional graphical depiction of Mogul quality analysis of bond lengths, bond angles, torsion angles, and ring geometry for oligosaccharide.









5.6 Ligand geometry [i](#)

Of 8 ligands modelled in this entry, 5 are monoatomic - leaving 3 for Mogul analysis.

In the following table, the Counts columns list the number of bonds (or angles) for which Mogul statistics could be retrieved, the number of bonds (or angles) that are observed in the model and the number of bonds (or angles) that are defined in the Chemical Component Dictionary. The Link column lists molecule types, if any, to which the group is linked. The Z score for a bond length (or angle) is the number of standard deviations the observed value is removed from the expected value. A bond length (or angle) with $|Z| > 2$ is considered an outlier worth inspection. RMSZ is the root-mean-square of all Z scores of the bond lengths (or angles).

Mol	Type	Chain	Res	Link	Bond lengths			Bond angles		
					Counts	RMSZ	$\# Z > 2$	Counts	RMSZ	$\# Z > 2$
9	NAG	A	805	1	14,14,15	1.02	1 (7%)	17,19,21	2.04	3 (17%)
11	QWF	A	808	6	74,74,74	0.65	0	94,96,96	0.94	3 (3%)
9	NAG	A	806	1	14,14,15	0.77	0	17,19,21	1.36	3 (17%)

In the following table, the Chirals column lists the number of chiral outliers, the number of chiral centers analysed, the number of these observed in the model and the number defined in the Chemical Component Dictionary. Similar counts are reported in the Torsion and Rings columns.

'-' means no outliers of that kind were identified.

Mol	Type	Chain	Res	Link	Chirals	Torsions	Rings
9	NAG	A	805	1	-	2/6/23/26	0/1/1/1
11	QWF	A	808	6	-	2/88/98/98	0/3/3/3
9	NAG	A	806	1	-	0/6/23/26	0/1/1/1

All (1) bond length outliers are listed below:

Mol	Chain	Res	Type	Atoms	Z	Observed(Å)	Ideal(Å)
9	A	805	NAG	O5-C1	2.29	1.47	1.43

All (9) bond angle outliers are listed below:

Mol	Chain	Res	Type	Atoms	Z	Observed(°)	Ideal(°)
9	A	805	NAG	O5-C5-C6	5.36	115.60	107.20
9	A	805	NAG	C1-O5-C5	5.08	119.07	112.19
9	A	806	NAG	C1-O5-C5	2.90	116.12	112.19
11	A	808	QWF	C31-C32-N6	2.65	119.50	113.36
11	A	808	QWF	C7-N2-C6	2.26	125.83	120.64
9	A	806	NAG	O3-C3-C4	-2.21	105.25	110.35
9	A	806	NAG	O4-C4-C5	2.11	114.55	109.30
9	A	805	NAG	C2-N2-C7	2.06	125.83	122.90
11	A	808	QWF	C3-C4-C5	2.05	117.94	112.51

There are no chirality outliers.

All (4) torsion outliers are listed below:

Mol	Chain	Res	Type	Atoms
9	A	805	NAG	O5-C5-C6-O6
9	A	805	NAG	C4-C5-C6-O6
11	A	808	QWF	C9-C10-C11-N3
11	A	808	QWF	C15-C16-C17-C22

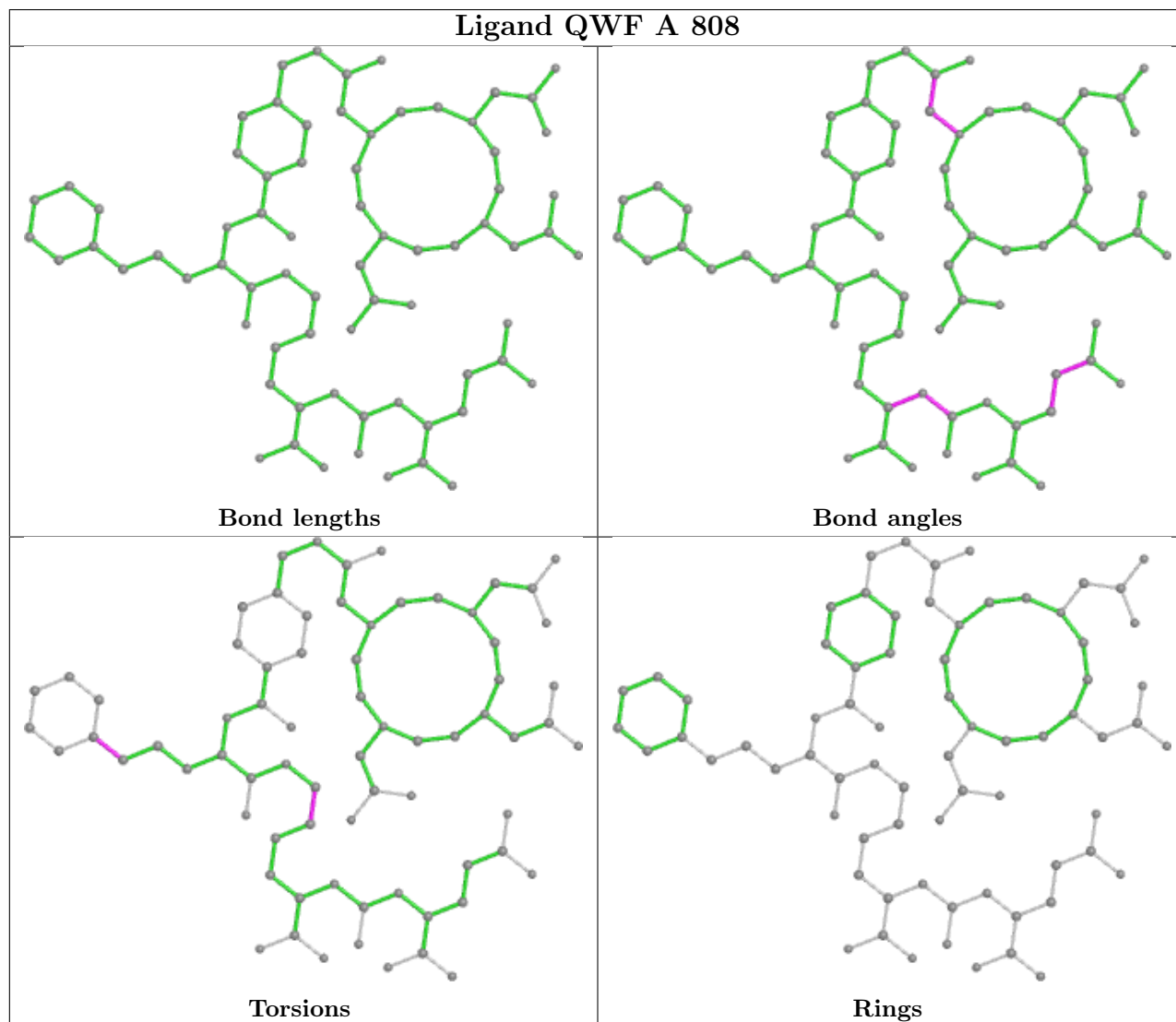
There are no ring outliers.

1 monomer is involved in 1 short contact:

Mol	Chain	Res	Type	Clashes	Symm-Clashes
9	A	806	NAG	1	0

The following is a two-dimensional graphical depiction of Mogul quality analysis of bond lengths, bond angles, torsion angles, and ring geometry for all instances of the Ligand of Interest. In addition, ligands with molecular weight > 250 and outliers as shown on the validation Tables will

also be included. For torsion angles, if less than 5% of the Mogul distribution of torsion angles is within 10 degrees of the torsion angle in question, then that torsion angle is considered an outlier. Any bond that is central to one or more torsion angles identified as an outlier by Mogul will be highlighted in the graph. For rings, the root-mean-square deviation (RMSD) between the ring in question and similar rings identified by Mogul is calculated over all ring torsion angles. If the average RMSD is greater than 60 degrees and the minimal RMSD between the ring in question and any Mogul-identified rings is also greater than 60 degrees, then that ring is considered an outlier. The outliers are highlighted in purple. The color gray indicates Mogul did not find sufficient equivalents in the CSD to analyse the geometry.



5.7 Other polymers [\(i\)](#)

There are no such residues in this entry.

5.8 Polymer linkage issues

There are no chain breaks in this entry.

6 Fit of model and data [i](#)

6.1 Protein, DNA and RNA chains [i](#)

In the following table, the column labelled ‘#RSRZ> 2’ contains the number (and percentage) of RSRZ outliers, followed by percent RSRZ outliers for the chain as percentile scores relative to all X-ray entries and entries of similar resolution. The OWAB column contains the minimum, median, 95th percentile and maximum values of the occupancy-weighted average B-factor per residue. The column labelled ‘Q< 0.9’ lists the number of (and percentage) of residues with an average occupancy less than 0.9.

Mol	Chain	Analysed	<RSRZ>	#RSRZ>2	OWAB(Å ²)	Q<0.9
1	A	693/707 (98%)	-0.11	19 (2%) 54 62	15, 28, 48, 74	0

All (19) RSRZ outliers are listed below:

Mol	Chain	Res	Type	RSRZ
1	A	719	VAL	3.8
1	A	135	GLY	3.8
1	A	136	ASN	3.3
1	A	134	ASP	3.1
1	A	124	HIS	3.0
1	A	153	ASN	3.0
1	A	487	GLY	3.0
1	A	506	PHE	2.9
1	A	131[A]	ILE	2.8
1	A	490	GLY	2.8
1	A	507	SER	2.7
1	A	337	PHE	2.7
1	A	656[A]	SER	2.6
1	A	335	GLY	2.5
1	A	404[A]	THR	2.3
1	A	336	ASN	2.3
1	A	154	VAL	2.1
1	A	409	GLY	2.1
1	A	132	ASN	2.0

6.2 Non-standard residues in protein, DNA, RNA chains [i](#)

There are no non-standard protein/DNA/RNA residues in this entry.

6.3 Carbohydrates [i](#)

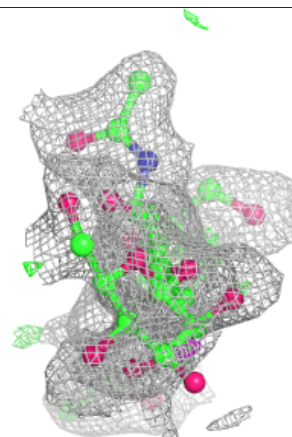
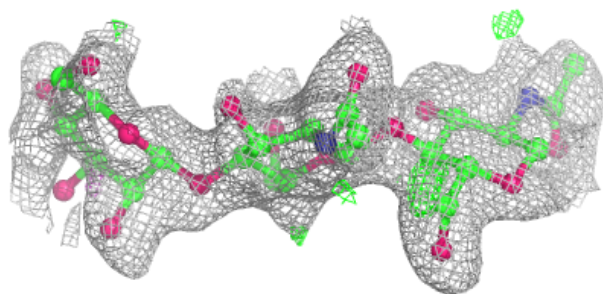
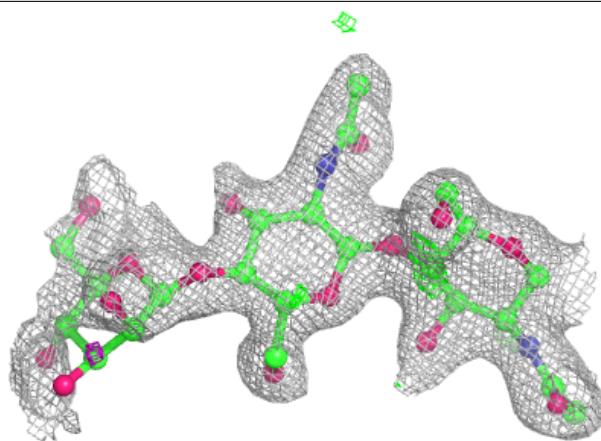
In the following table, the Atoms column lists the number of modelled atoms in the group and the number defined in the chemical component dictionary. The B-factors column lists the minimum, median, 95th percentile and maximum values of B factors of atoms in the group. The column labelled 'Q<0.9' lists the number of atoms with occupancy less than 0.9.

Mol	Type	Chain	Res	Atoms	RSCC	RSR	B-factors(Å ²)	Q<0.9
2	BMA	B	3	11/12	0.40	0.45	92,100,108,111	0
5	BMA	E	3	11/12	0.57	0.45	107,114,121,127	0
4	NAG	D	1	14/15	0.63	0.25	56,66,90,94	0
4	NAG	D	2	14/15	0.66	0.42	89,96,102,113	0
5	FUC	E	4	10/11	0.73	0.43	78,86,88,89	0
2	NAG	B	2	14/15	0.79	0.25	46,60,76,85	0
2	BMA	F	3	11/12	0.80	0.20	59,66,78,85	0
5	NAG	E	1	14/15	0.83	0.16	46,51,60,61	0
5	NAG	E	2	14/15	0.83	0.30	57,72,85,100	0
3	MAN	C	5	11/12	0.88	0.21	83,91,94,98	0
3	BMA	C	3	11/12	0.89	0.07	48,53,65,71	0
3	MAN	C	4	11/12	0.92	0.12	51,53,60,61	0
2	NAG	F	2	14/15	0.93	0.13	37,46,51,58	0
3	NAG	C	1	14/15	0.93	0.07	24,29,41,50	0
3	NAG	C	2	14/15	0.93	0.11	42,50,56,72	0
2	NAG	B	1	14/15	0.94	0.12	38,44,50,53	0
2	NAG	F	1	14/15	0.95	0.07	30,34,36,41	0

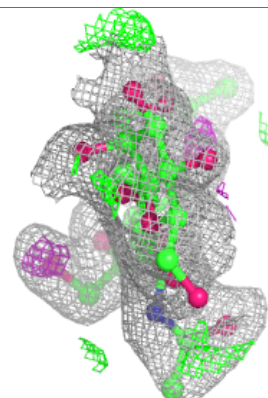
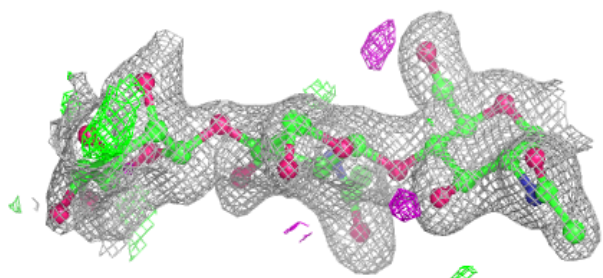
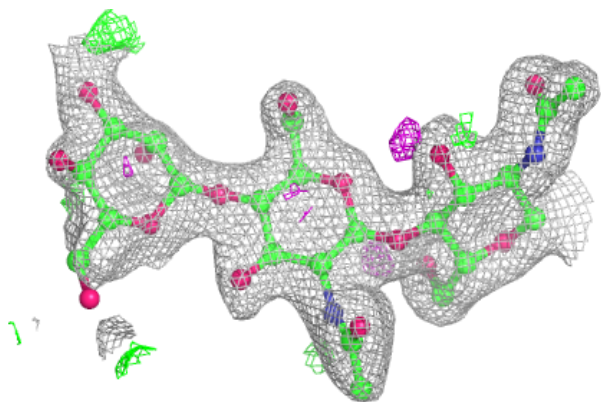
The following is a graphical depiction of the model fit to experimental electron density for oligosaccharide. Each fit is shown from different orientation to approximate a three-dimensional view.

Electron density around Chain B:

$2mF_o-DF_c$ (at 0.7 rmsd) in gray
 mF_o-DF_c (at 3 rmsd) in purple (negative)
and green (positive)

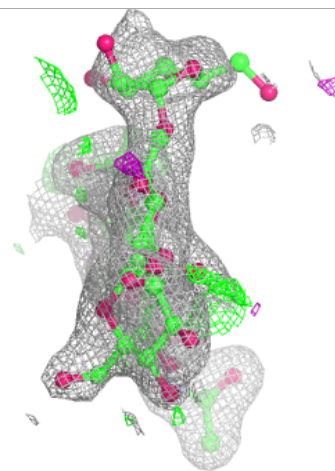
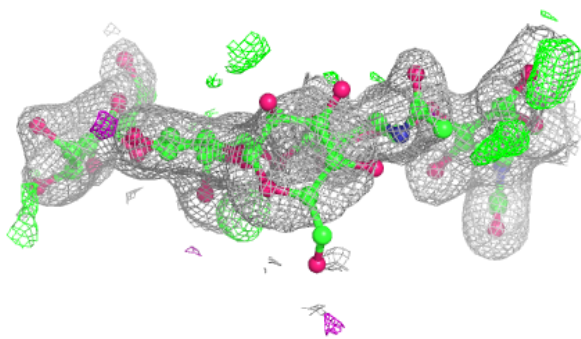
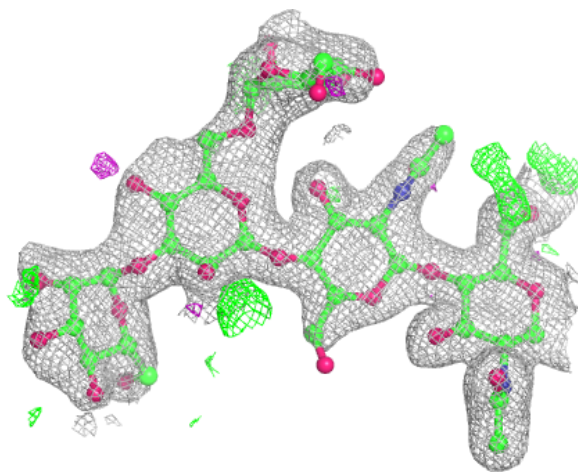
**Electron density around Chain F:**

$2mF_o-DF_c$ (at 0.7 rmsd) in gray
 mF_o-DF_c (at 3 rmsd) in purple (negative)
and green (positive)



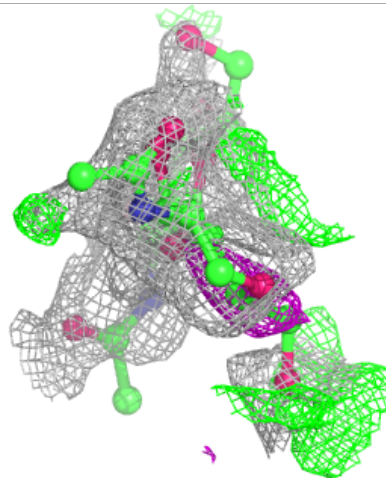
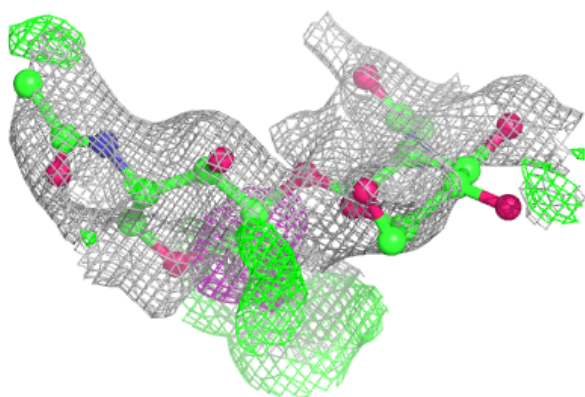
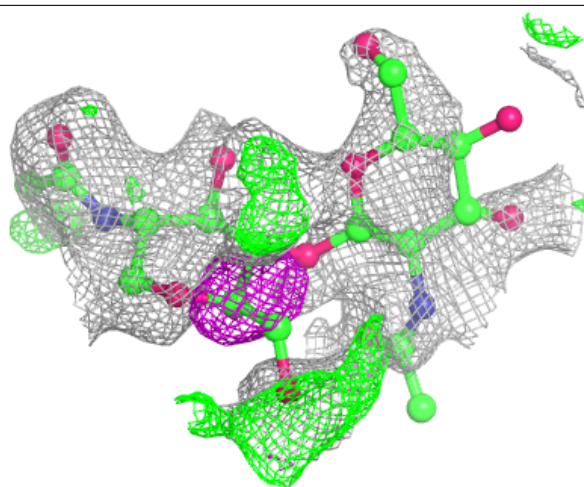
Electron density around Chain C:

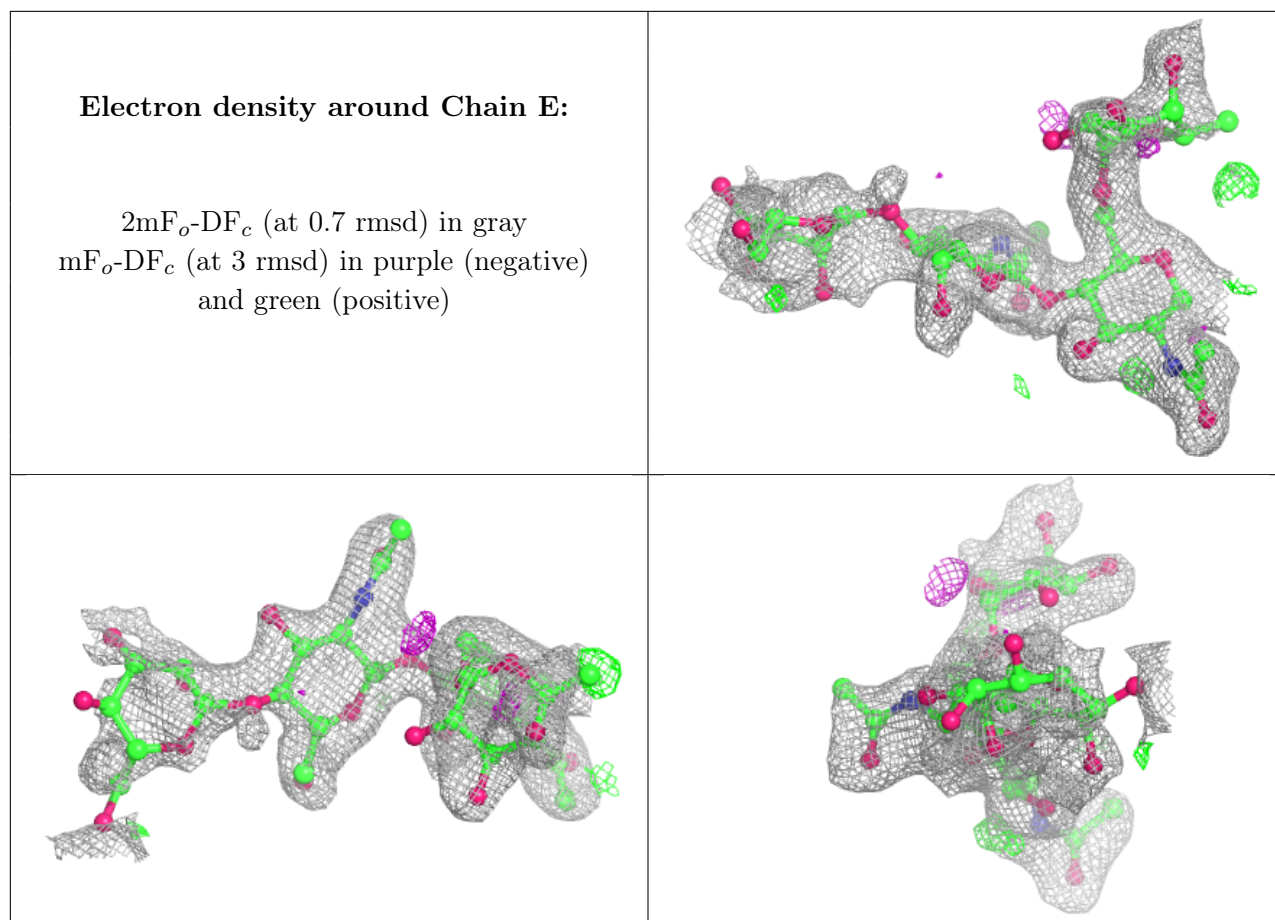
$2mF_o-DF_c$ (at 0.7 rmsd) in gray
 mF_o-DF_c (at 3 rmsd) in purple (negative)
and green (positive)



Electron density around Chain D:

$2mF_o-DF_c$ (at 0.7 rmsd) in gray
 mF_o-DF_c (at 3 rmsd) in purple (negative)
and green (positive)





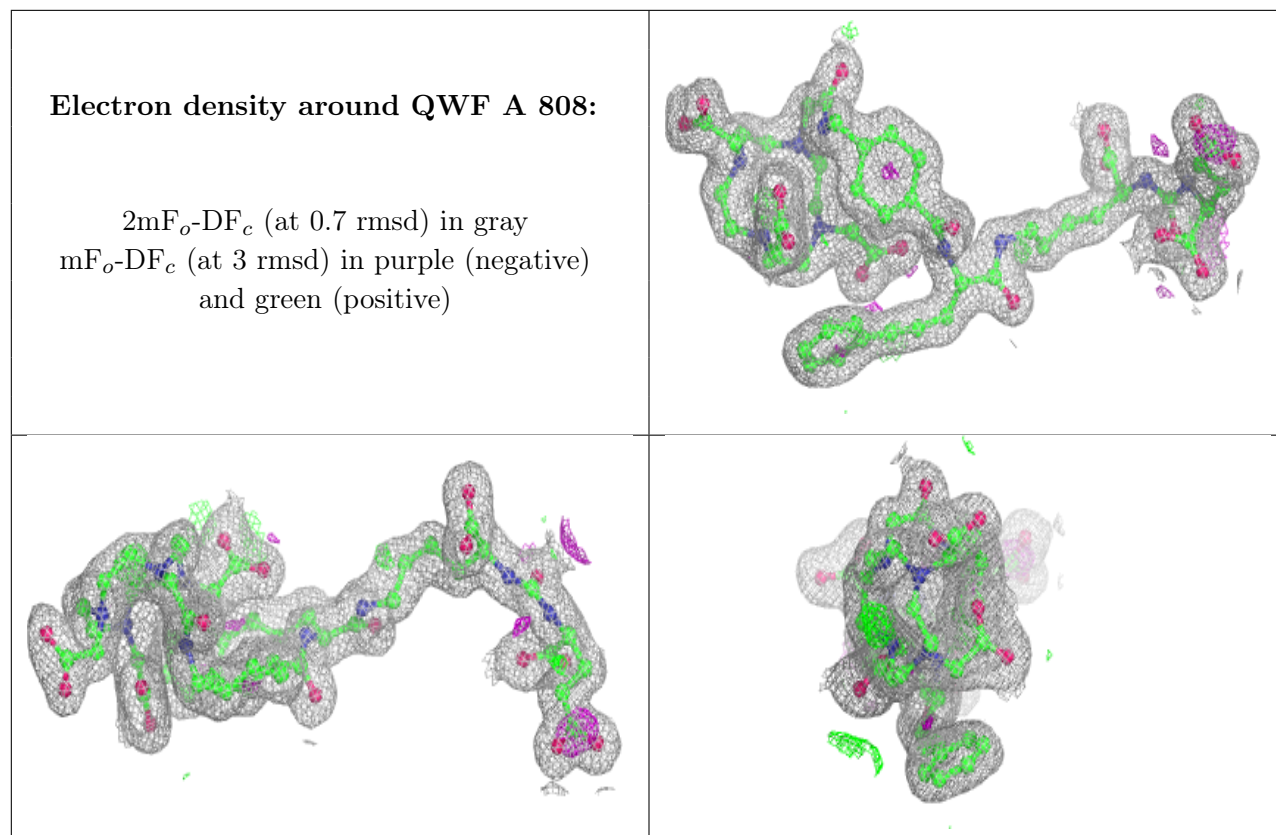
6.4 Ligands [i](#)

In the following table, the Atoms column lists the number of modelled atoms in the group and the number defined in the chemical component dictionary. The B-factors column lists the minimum, median, 95th percentile and maximum values of B factors of atoms in the group. The column labelled 'Q<0.9' lists the number of atoms with occupancy less than 0.9.

Mol	Type	Chain	Res	Atoms	RSCC	RSR	B-factors(Å ²)	Q<0.9
10	NA	A	807	1/1	0.72	0.31	55,55,55,55	0
9	NAG	A	805	14/15	0.83	0.24	69,78,84,87	0
9	NAG	A	806	14/15	0.92	0.07	31,39,45,49	0
11	QWF	A	808	72/72	0.94	0.10	15,31,42,53	0
6	ZN	A	802	1/1	0.99	0.03	18,18,18,18	0
7	CA	A	803	1/1	1.00	0.04	23,23,23,23	0
8	CL	A	804	1/1	1.00	0.08	21,21,21,21	0
6	ZN	A	801	1/1	1.00	0.02	18,18,18,18	0

The following is a graphical depiction of the model fit to experimental electron density of all instances of the Ligand of Interest. In addition, ligands with molecular weight > 250 and outliers as shown on the geometry validation Tables will also be included. Each fit is shown from different

orientation to approximate a three-dimensional view.



6.5 Other polymers [i](#)

There are no such residues in this entry.