



Full wwPDB EM Validation Report ⓘ

Nov 9, 2023 – 10:21 AM EST

PDB ID : 8EKW
EMDB ID : EMD-28214
Title : Cryo-EM structure of human PRDX4
Authors : Su, C.C.
Deposited on : 2022-09-22
Resolution : 2.83 Å (reported)

This is a Full wwPDB EM Validation Report for a publicly released PDB entry.

We welcome your comments at validation@mail.wwpdb.org

A user guide is available at

<https://www.wwpdb.org/validation/2017/EMValidationReportHelp>

with specific help available everywhere you see the ⓘ symbol.

The types of validation reports are described at

<http://www.wwpdb.org/validation/2017/FAQs#types>.

The following versions of software and data (see [references ⓘ](#)) were used in the production of this report:

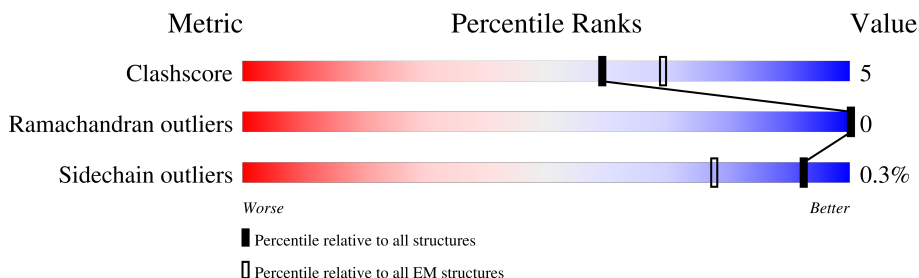
EMDB validation analysis : 0.0.1.dev70
MolProbity : 4.02b-467
Percentile statistics : 20191225.v01 (using entries in the PDB archive December 25th 2019)
MapQ : 1.9.9
Ideal geometry (proteins) : Engh & Huber (2001)
Ideal geometry (DNA, RNA) : Parkinson et al. (1996)
Validation Pipeline (wwPDB-VP) : 2.36

1 Overall quality at a glance

The following experimental techniques were used to determine the structure:
ELECTRON MICROSCOPY

The reported resolution of this entry is 2.83 Å.

Percentile scores (ranging between 0-100) for global validation metrics of the entry are shown in the following graphic. The table shows the number of entries on which the scores are based.





Metric	Whole archive (#Entries)	EM structures (#Entries)
Clashscore	158937	4297
Ramachandran outliers	154571	4023
Sidechain outliers	154315	3826

The table below summarises the geometric issues observed across the polymeric chains and their fit to the map. The red, orange, yellow and green segments of the bar indicate the fraction of residues that contain outliers for ≥ 3 , 2, 1 and 0 types of geometric quality criteria respectively. A grey segment represents the fraction of residues that are not modelled. The numeric value for each fraction is indicated below the corresponding segment, with a dot representing fractions $\leq 5\%$. The upper red bar (where present) indicates the fraction of residues that have poor fit to the EM map (all-atom inclusion $< 40\%$). The numeric value is given above the bar.

Mol	Chain	Length	Quality of chain
1	A	271	
1	B	271	
1	C	271	
1	D	271	
1	E	271	
1	F	271	
1	G	271	
1	H	271	

Continued on next page...

Continued from previous page...

Mol	Chain	Length	Quality of chain
1	I	271	 57% 8% 35%
1	J	271	 58% 7% 35%

2 Entry composition [i](#)

There are 2 unique types of molecules in this entry. The entry contains 14552 atoms, of which 0 are hydrogens and 0 are deuteriums.

In the tables below, the AltConf column contains the number of residues with at least one atom in alternate conformation and the Trace column contains the number of residues modelled with at most 2 atoms.

- Molecule 1 is a protein called Peroxiredoxin-4.

Mol	Chain	Residues	Atoms					AltConf	Trace
			Total	C	N	O	S		
1	A	176	1415	912	238	262	3	0	0
1	B	176	1415	912	238	262	3	0	0
1	C	176	1415	912	238	262	3	0	0
1	D	176	1415	912	238	262	3	0	0
1	E	176	1415	912	238	262	3	0	0
1	F	176	1415	912	238	262	3	0	0
1	G	176	1415	912	238	262	3	0	0
1	H	176	1415	912	238	262	3	0	0
1	I	176	1415	912	238	262	3	0	0
1	J	176	1415	912	238	262	3	0	0

- Molecule 2 is water.

Mol	Chain	Residues	Atoms		AltConf
2	A	44	Total 44	O 44	0
2	B	41	Total 41	O 41	0
2	C	40	Total 40	O 40	0
2	D	43	Total 43	O 43	0
2	E	38	Total 38	O 38	0

Continued on next page...

Continued from previous page...

Mol	Chain	Residues	Atoms		AltConf
2	F	38	Total 38	O 38	0
2	G	39	Total 39	O 39	0
2	H	38	Total 38	O 38	0
2	I	38	Total 38	O 38	0
2	J	43	Total 43	O 43	0

3 Residue-property plots [i](#)

These plots are drawn for all protein, RNA, DNA and oligosaccharide chains in the entry. The first graphic for a chain summarises the proportions of the various outlier classes displayed in the second graphic. The second graphic shows the sequence view annotated by issues in geometry and atom inclusion in map density. Residues are color-coded according to the number of geometric quality criteria for which they contain at least one outlier: green = 0, yellow = 1, orange = 2 and red = 3 or more. A red diamond above a residue indicates a poor fit to the EM map for this residue (all-atom inclusion < 40%). Stretches of 2 or more consecutive residues without any outlier are shown as a green connector. Residues present in the sample, but not in the model, are shown in grey.

- Molecule 1: Peroxiredoxin-4

Chain A: 

MET GLU ALA ALA LEU LEU PRO PRO LEU LEU ALA ALA THR THR PRO ASP ASP HIS HIS GLY ARG ARG HIS ARG ARG LEU LEU LEU LEU LEU LEU PRO PRO LEU LEU LEU PHE LEU LEU PRO ALA ALA GLY ALA VAL VAL GLN GLN TRP TRP GLU THR GLU GLU ARG ARG PRO ARG THR THR ARG GLU GLU CYS HIS HIS PHE TYR TYR ALA ALA GLY GLY GLN VAL VAL TYR

PRO GLY GLU ALA SER ARG VAL VAL A70 D71 H72 S73 L74 H75 H76 K80 R107 F114 E127 L135 R165 I172 R173 I174 K186 L192 H197 R200 D206 R212 Q213 L219 R223 L231 F235 T238 D239 K240 H241 G242 E243

V244 C245 PRO ALA TRP LYS LYS PRO PRO GLY SER SER SER THR THR ILE ILE PRO ASP PRO ALA ALA LYS LYS LEU LEU TYR PHE ASP LYS LEU ASN

- Molecule 1: Peroxiredoxin-4

Chain B: 

MET GLU ALA ALA LEU LEU PRO PRO LEU LEU ALA ALA THR THR PRO ASP ASP HIS HIS GLY ARG ARG HIS ARG ARG LEU LEU LEU LEU LEU LEU PRO PRO ALA ALA GLY ALA VAL VAL GLN GLN TRP TRP GLU THR GLU GLU ARG ARG PRO ARG THR THR ARG GLU GLU CYS HIS HIS PHE TYR TYR ALA ALA GLY GLY GLN VAL VAL TYR

PRO GLY GLU ALA SER ARG VAL VAL A70 D71 H72 S73 L74 H75 K80 R107 G108 Y110 D119 E127 R134 L135 T143 E144 D151 H156 I160 R165 I174 F175 L176 L192 R200 Q213 I214 T215 L219 R223 D226 T238

D239 K240 H241 G242 E243 V244 C245 PRO ALA TRP LYS LYS PRO PRO GLY SER SER SER THR THR ILE ILE PRO ASP ASP ALA ALA LYS LYS LEU LEU TYR PHE ASP LYS LEU ASN

- Molecule 1: Peroxiredoxin-4

Chain C: 

MET GLU ALA ALA LEU LEU PRO PRO LEU LEU ALA ALA THR THR PRO ASP ASP HIS HIS GLY ARG ARG HIS ARG ARG LEU LEU LEU LEU LEU LEU PRO PRO ALA ALA GLY ALA VAL VAL GLN GLN TRP TRP GLU THR GLU GLU ARG ARG PRO ARG THR THR ARG GLU GLU CYS HIS HIS PHE TYR TYR ALA ALA GLY GLY GLN VAL VAL TYR

PRO GLY GLU ALA SER ARG VAL VAL A70 D71 H72 S73 L74 H75 L101 R107 G108 K109 E144 P163 R164 R165 Q166 I172 R173 I174 H197 T198 L199 Q213 L219 P220 R223 L231 K240 H241 G242 E243 V244 C245 PRO ALA ALA GLY TRP LYS PRO PRO GLY SER

GLU
THR
ILE
ILE
PRO
ASP
PRO
ALA
GLY
LYS
LEU
LEU
TYR
PHE
ASP
LYS
LEU
ASN

• Molecule 1: Peroxiredoxin-4



MET
GLU
ALA
LEU
LEU
PRO
LEU
LEU
ALA
ALA
THR
THR
PRO
PRO
ASP
HIS
HIS
GLY
ARG
HIS
ARG
ARG
ARG
LEU
LEU
LEU
LEU
PRO
LEU
LEU
LEU
PHE
LEU
LEU
PRO
ALA
GLY
ALA
VAL
GLN
GLY
TRP
GLU
GLU
GLU
ARG
PRO
ARG
THR
ARG
GLU
GLU
GLU
CYS
HIS
PHE
TYR
ALA
GLY
GLY
GLN
VAL
TYR

PRO
GLY
GLU
ALA
SER
ARG
VAL
SER
VAL
A70
D71
H72
S73
L74
H75
Y110
F114
P117
E127
R134
F138
T143
R164
R165
L169
I172
R173
I174
H197
R200
D207
K208
D218
L219
P220
R223
S224
V225
D226
E227
R230
D239
K240

E243
V244
C245
PRO
ALA
TRP
LYS
PRO
GLY
SER
SER
GLU
THR
GLY
ILE
ILE
PRO
ASP
PRO
ALA
GLY
LYS
LEU
LEU
TYR
PHE
ASP
LYS
LEU
ASN

• Molecule 1: Peroxiredoxin-4



MET
GLU
ALA
LEU
LEU
PRO
LEU
LEU
ALA
ALA
THR
THR
PRO
PRO
ASP
HIS
HIS
GLY
ARG
HIS
ARG
ARG
ARG
LEU
LEU
LEU
LEU
PRO
LEU
LEU
LEU
PHE
LEU
LEU
PRO
ALA
GLY
ALA
VAL
GLN
GLY
TRP
GLU
GLU
GLU
ARG
PRO
ARG
THR
ARG
GLU
GLU
GLU
CYS
HIS
PHE
TYR
ALA
GLY
GLY
GLN
VAL
TYR

PRO
GLY
GLU
ALA
SER
ARG
VAL
SER
VAL
A70
D71
H72
S73
L74
H75
R107
G108
K109
Y110
E127
R134
L135
R139
E144
D151
H156
I160
R165
I174
P175
L176
L192
R200
D206
R212
Q213
L214
T215
L219
R223
D226
F235

K240
H241
G242
E243
V244
C245
PRO
ALA
TRP
LYS
PRO
GLY
SER
SER
GLU
THR
ILE
ILE
PRO
ASP
PRO
ALA
GLY
LYS
LEU
LEU
TYR
PHE
ASP
LYS
LEU
ASN

• Molecule 1: Peroxiredoxin-4



MET
GLU
ALA
LEU
LEU
PRO
LEU
LEU
ALA
ALA
THR
THR
PRO
PRO
ASP
HIS
HIS
GLY
ARG
HIS
ARG
ARG
ARG
LEU
LEU
LEU
LEU
PRO
LEU
LEU
LEU
PHE
LEU
LEU
PRO
ALA
GLY
ALA
VAL
GLN
GLY
TRP
GLU
GLU
GLU
ARG
PRO
ARG
THR
ARG
GLU
GLU
GLU
CYS
HIS
PHE
TYR
ALA
GLY
GLY
GLN
VAL
TYR

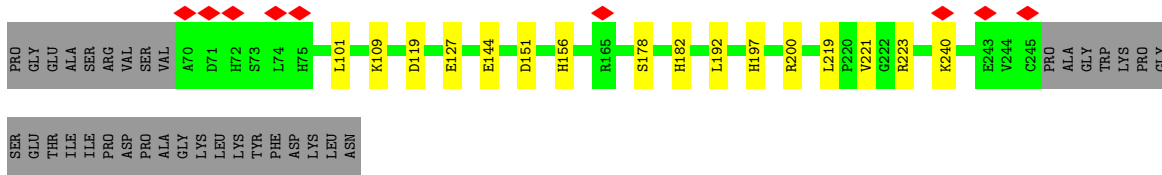
PRO
GLY
GLU
ALA
SER
ARG
VAL
SER
VAL
A70
D71
H72
S73
L74
H75
R107
G108
K109
E127
R134
E144
R165
H182
S185
K186
Y191
L192
L197
R200
I204
Q213
L219
R223
D226
K240
H241
G242
E243
V244
C245
PRO
ALA
GLY
TRP

LYS
PRO
GLY
SER
GLU
THR
THR
ILE
ILE
PRO
ASP
PRO
ALA
GLY
LYS
LEU
LEU
TYR
PHE
ASP
LYS
LEU
ASN

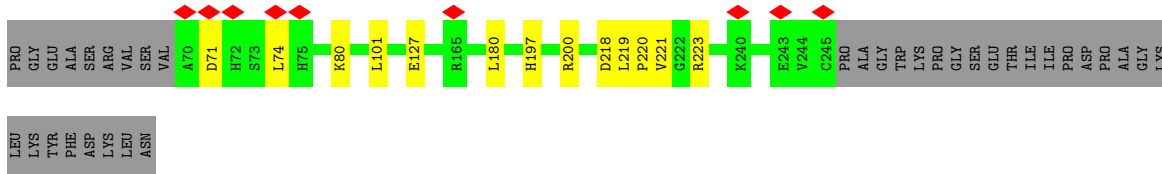
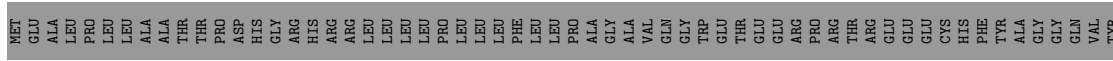
• Molecule 1: Peroxiredoxin-4



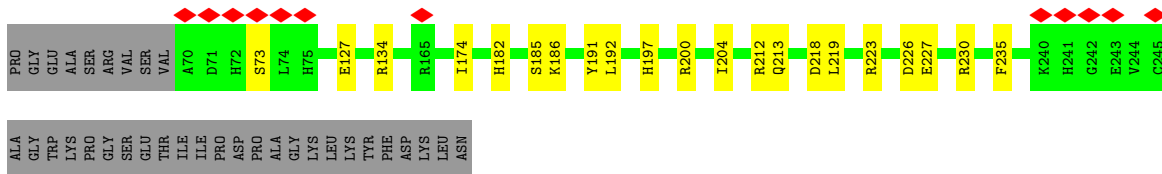
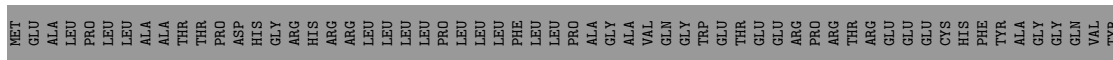
MET
GLU
ALA
LEU
LEU
PRO
LEU
LEU
ALA
ALA
THR
THR
PRO
PRO
ASP
HIS
HIS
GLY
ARG
HIS
ARG
ARG
ARG
LEU
LEU
LEU
LEU
PRO
LEU
LEU
LEU
PHE
LEU
LEU
PRO
ALA
GLY
ALA
VAL
GLN
GLY
TRP
GLU
GLU
GLU
ARG
PRO
ARG
THR
ARG
GLU
GLU
GLU
CYS
HIS
PHE
TYR
TYR
ALA
GLY
GLY
GLN
VAL
TYR



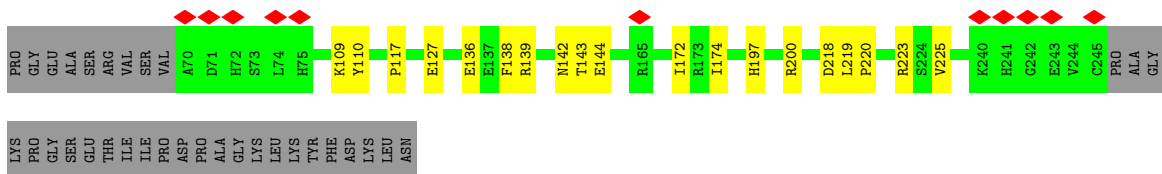
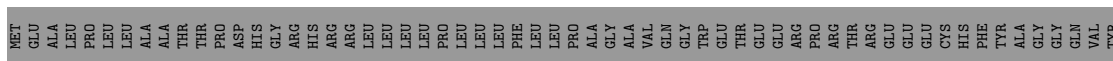
● Molecule 1: Peroxiredoxin-4



● Molecule 1: Peroxiredoxin-4



● Molecule 1: Peroxiredoxin-4



● Molecule 1: Peroxiredoxin-4

4 Experimental information

Property	Value	Source
EM reconstruction method	SINGLE PARTICLE	Depositor
Imposed symmetry	POINT, Not provided	
Number of particles used	34192	Depositor
Resolution determination method	FSC 0.143 CUT-OFF	Depositor
CTF correction method	PHASE FLIPPING AND AMPLITUDE CORRECTION	Depositor
Microscope	FEI TITAN KRIOS	Depositor
Voltage (kV)	300	Depositor
Electron dose ($e^-/\text{\AA}^2$)	29.0	Depositor
Minimum defocus (nm)	1000	Depositor
Maximum defocus (nm)	2500	Depositor
Magnification	Not provided	
Image detector	GATAN K3 BIOQUANTUM (6k x 4k)	Depositor
Maximum map value	3.247	Depositor
Minimum map value	-1.822	Depositor
Average map value	0.000	Depositor
Map value standard deviation	0.074	Depositor
Recommended contour level	0.37	Depositor
Map size (Å)	324.0, 324.0, 324.0	wwPDB
Map dimensions	300, 300, 300	wwPDB
Map angles (°)	90.0, 90.0, 90.0	wwPDB
Pixel spacing (Å)	1.08, 1.08, 1.08	Depositor

5 Model quality [i](#)

5.1 Standard geometry [i](#)

The Z score for a bond length (or angle) is the number of standard deviations the observed value is removed from the expected value. A bond length (or angle) with $|Z| > 5$ is considered an outlier worth inspection. RMSZ is the root-mean-square of all Z scores of the bond lengths (or angles).

Mol	Chain	Bond lengths		Bond angles	
		RMSZ	# Z >5	RMSZ	# Z >5
1	A	0.33	0/1450	0.53	0/1967
1	B	0.32	0/1450	0.52	0/1967
1	C	0.37	0/1450	0.55	0/1967
1	D	0.38	0/1450	0.55	0/1967
1	E	0.35	0/1450	0.51	0/1967
1	F	0.31	0/1450	0.53	0/1967
1	G	0.31	0/1450	0.51	0/1967
1	H	0.36	0/1450	0.57	2/1967 (0.1%)
1	I	0.32	0/1450	0.53	0/1967
1	J	0.33	0/1450	0.52	0/1967
All	All	0.34	0/14500	0.53	2/19670 (0.0%)

There are no bond length outliers.

All (2) bond angle outliers are listed below:

Mol	Chain	Res	Type	Atoms	Z	Observed(°)	Ideal(°)
1	H	180	LEU	CA-CB-CG	7.52	132.59	115.30
1	H	180	LEU	CB-CG-CD1	-5.21	102.14	111.00

There are no chirality outliers.

There are no planarity outliers.

5.2 Too-close contacts [i](#)

In the following table, the Non-H and H(model) columns list the number of non-hydrogen atoms and hydrogen atoms in the chain respectively. The H(added) column lists the number of hydrogen atoms added and optimized by MolProbity. The Clashes column lists the number of clashes within the asymmetric unit, whereas Symm-Clashes lists symmetry-related clashes.

Mol	Chain	Non-H	H(model)	H(added)	Clashes	Symm-Clashes
1	A	1415	0	1398	17	0

Continued on next page...

Continued from previous page...

Mol	Chain	Non-H	H(model)	H(added)	Clashes	Symm-Clashes
1	B	1415	0	1398	16	0
1	C	1415	0	1398	13	0
1	D	1415	0	1398	16	0
1	E	1415	0	1398	18	0
1	F	1415	0	1398	11	0
1	G	1415	0	1398	12	0
1	H	1415	0	1398	11	0
1	I	1415	0	1398	14	0
1	J	1415	0	1398	17	0
2	A	44	0	0	2	0
2	B	41	0	0	2	0
2	C	40	0	0	2	0
2	D	43	0	0	1	0
2	E	38	0	0	1	0
2	F	38	0	0	1	0
2	G	39	0	0	1	0
2	H	38	0	0	1	0
2	I	38	0	0	1	0
2	J	43	0	0	1	0
All	All	14552	0	13980	136	0

The all-atom clashscore is defined as the number of clashes found per 1000 atoms (including hydrogen atoms). The all-atom clashscore for this structure is 5.

All (136) close contacts within the same asymmetric unit are listed below, sorted by their clash magnitude.

Atom-1	Atom-2	Interatomic distance (Å)	Clash overlap (Å)
1:H:80:LYS:NZ	2:H:301:HOH:O	2.24	0.70
1:J:109:LYS:NZ	1:J:144:GLU:OE2	2.25	0.69
1:E:200:ARG:NE	1:E:219:LEU:O	2.26	0.68
1:H:218:ASP:HB3	1:H:220:PRO:HD2	1.76	0.67
1:B:200:ARG:NE	1:B:219:LEU:O	2.27	0.67
1:E:127:GLU:OE2	1:E:223:ARG:N	2.27	0.66
1:F:127:GLU:OE2	1:F:223:ARG:N	2.28	0.66
1:J:200:ARG:HG2	1:J:223:ARG:HH12	1.59	0.66
1:H:127:GLU:OE2	1:H:223:ARG:N	2.27	0.65
1:E:109:LYS:HE2	1:E:144:GLU:HG2	1.79	0.65
1:G:109:LYS:NZ	1:G:144:GLU:OE2	2.30	0.65
1:I:127:GLU:OE2	1:I:223:ARG:N	2.28	0.65
1:J:218:ASP:HB3	1:J:220:PRO:HD2	1.79	0.64
1:C:109:LYS:NZ	1:C:144:GLU:OE2	2.30	0.64

Continued on next page...

Continued from previous page...

Atom-1	Atom-2	Interatomic distance (Å)	Clash overlap (Å)
1:G:127:GLU:OE2	1:G:223:ARG:N	2.30	0.64
1:B:127:GLU:OE2	1:B:223:ARG:N	2.29	0.63
1:J:127:GLU:OE2	1:J:223:ARG:N	2.29	0.61
1:D:127:GLU:OE2	1:D:223:ARG:N	2.33	0.61
1:I:197:HIS:NE2	2:I:302:HOH:O	2.31	0.61
1:D:134:ARG:NH2	1:D:226:ASP:OD1	2.33	0.60
1:D:197:HIS:NE2	2:D:303:HOH:O	2.32	0.60
1:H:71:ASP:HB2	1:H:74:LEU:HB2	1.83	0.60
1:D:200:ARG:HG2	1:D:223:ARG:NH1	2.17	0.59
1:A:197:HIS:NE2	2:A:303:HOH:O	2.31	0.59
1:I:134:ARG:NH2	1:I:226:ASP:OD1	2.34	0.59
1:J:197:HIS:NE2	2:J:301:HOH:O	2.32	0.59
1:E:134:ARG:NH2	1:E:226:ASP:OD1	2.36	0.58
1:C:197:HIS:NE2	2:C:301:HOH:O	2.32	0.58
1:H:200:ARG:NE	1:H:219:LEU:O	2.24	0.58
1:B:80:LYS:NZ	2:B:301:HOH:O	2.23	0.57
1:H:197:HIS:HE1	1:H:219:LEU:HD21	1.71	0.56
1:D:114:PHE:HB2	1:D:223:ARG:HH21	1.69	0.56
1:C:199:LEU:HA	1:C:219:LEU:HD21	1.87	0.55
1:B:75:HIS:HA	1:D:74:LEU:HD23	1.89	0.55
1:E:135:LEU:HD21	1:E:139:ARG:HH21	1.72	0.55
1:D:200:ARG:HG2	1:D:223:ARG:HH12	1.71	0.55
1:H:200:ARG:HB3	1:H:223:ARG:NH1	2.21	0.54
1:E:107:ARG:NH2	2:E:306:HOH:O	2.40	0.54
1:I:182:HIS:O	1:I:186:LYS:HG3	2.08	0.54
1:F:182:HIS:O	1:F:186:LYS:HG3	2.08	0.53
1:B:134:ARG:NH2	1:B:226:ASP:OD1	2.39	0.53
1:J:200:ARG:HG2	1:J:223:ARG:NH1	2.23	0.53
1:F:200:ARG:HB3	1:F:223:ARG:NH1	2.23	0.53
1:B:107:ARG:NH2	2:B:306:HOH:O	2.41	0.52
1:E:235:PHE:HE1	1:J:218:ASP:HB2	1.75	0.52
1:A:107:ARG:NH2	2:A:307:HOH:O	2.43	0.52
1:G:192:LEU:HD11	1:G:219:LEU:HD11	1.92	0.51
1:A:172:ILE:HG13	1:A:174:ILE:H	1.76	0.51
1:A:192:LEU:HD11	1:A:219:LEU:HD11	1.92	0.51
1:A:127:GLU:OE2	1:A:223:ARG:HG2	2.10	0.50
1:D:117:PRO:HD3	1:D:200:ARG:HG3	1.93	0.50
1:H:218:ASP:OD2	1:I:212:ARG:NE	2.31	0.50
1:C:172:ILE:HG13	1:C:174:ILE:H	1.77	0.50
1:A:127:GLU:OE2	1:A:223:ARG:N	2.41	0.50
1:F:109:LYS:HE2	1:F:144:GLU:OE1	2.11	0.50

Continued on next page...

Continued from previous page...

Atom-1	Atom-2	Interatomic distance (Å)	Clash overlap (Å)
1:B:192:LEU:HD11	1:B:219:LEU:HD11	1.93	0.50
1:C:107:ARG:NH2	2:C:304:HOH:O	2.45	0.49
1:F:134:ARG:NH2	1:F:226:ASP:OD1	2.40	0.49
1:E:192:LEU:HD11	1:E:219:LEU:HD11	1.93	0.49
1:F:192:LEU:HD11	1:F:219:LEU:HD11	1.95	0.49
1:J:117:PRO:HD3	1:J:200:ARG:HG3	1.94	0.48
1:F:204:ILE:HD12	1:F:213:GLN:HB3	1.95	0.48
1:B:110:TYR:HB3	1:B:143:THR:HG23	1.95	0.48
1:E:212:ARG:NE	1:J:218:ASP:OD2	2.39	0.48
1:A:206:ASP:OD2	1:A:212:ARG:NH2	2.47	0.48
1:G:151:ASP:O	1:G:178:SER:OG	2.25	0.48
1:E:200:ARG:HB3	1:E:223:ARG:NH1	2.28	0.48
1:J:110:TYR:HB3	1:J:143:THR:HG23	1.96	0.48
1:E:213:GLN:OE1	1:E:215:THR:OG1	2.32	0.47
1:I:192:LEU:HD11	1:I:219:LEU:HD11	1.96	0.47
1:B:135:LEU:HD13	1:B:174:ILE:HD11	1.95	0.47
1:I:218:ASP:OD1	1:I:219:LEU:N	2.44	0.47
1:A:135:LEU:HD13	1:A:174:ILE:HD11	1.95	0.47
1:J:136:GLU:HA	1:J:139:ARG:HG2	1.97	0.47
1:D:110:TYR:HB3	1:D:143:THR:HG23	1.96	0.47
1:G:200:ARG:NE	1:G:219:LEU:O	2.29	0.47
1:E:135:LEU:HD13	1:E:174:ILE:HD11	1.96	0.46
1:I:204:ILE:HD12	1:I:213:GLN:HB3	1.98	0.46
1:C:219:LEU:HD23	1:C:219:LEU:HA	1.63	0.46
1:G:197:HIS:HE1	1:G:219:LEU:HD21	1.80	0.46
1:I:185:SER:HB3	1:I:191:TYR:HB2	1.99	0.45
1:A:238:THR:HG21	1:C:220:PRO:HG3	1.99	0.44
1:F:107:ARG:NH2	2:F:309:HOH:O	2.47	0.44
1:J:109:LYS:HG3	1:J:142:ASN:OD1	2.17	0.44
1:C:163:PRO:HG2	1:C:166:GLN:HE21	1.83	0.44
1:B:160:ILE:HD11	1:B:176:LEU:HD12	1.99	0.44
1:D:138:PHE:HE2	1:D:225:VAL:HG13	1.82	0.44
1:J:197:HIS:HE1	1:J:219:LEU:HD21	1.82	0.44
1:J:138:PHE:HE2	1:J:225:VAL:HG13	1.83	0.44
1:D:227:GLU:OE2	1:D:230:ARG:NH2	2.48	0.43
1:C:213:GLN:OE1	1:C:231:LEU:HD13	2.18	0.43
1:E:160:ILE:HD11	1:E:176:LEU:HD12	1.99	0.43
1:H:218:ASP:HB2	1:I:235:PHE:HE1	1.83	0.43
1:I:200:ARG:HB3	1:I:223:ARG:NH1	2.33	0.43
1:A:114:PHE:HB2	1:A:223:ARG:HH12	1.82	0.43
1:E:235:PHE:CE1	1:J:218:ASP:HB2	2.53	0.43

Continued on next page...

Continued from previous page...

Atom-1	Atom-2	Interatomic distance (Å)	Clash overlap (Å)
1:F:185:SER:HB3	1:F:191:TYR:HB2	2.00	0.43
1:G:101:LEU:HD12	1:G:101:LEU:HA	1.86	0.43
1:G:200:ARG:HB3	1:G:223:ARG:NH1	2.34	0.43
1:A:114:PHE:HB2	1:A:223:ARG:NH1	2.34	0.43
1:A:80:LYS:NZ	1:C:72:HIS:CE1	2.87	0.43
1:A:213:GLN:OE1	1:A:231:LEU:HD13	2.18	0.43
1:A:212:ARG:HG3	1:A:235:PHE:CZ	2.53	0.43
1:B:213:GLN:OE1	1:B:215:THR:OG1	2.33	0.42
1:E:174:ILE:HD13	1:E:174:ILE:HA	1.86	0.42
1:H:101:LEU:HD12	1:H:101:LEU:HA	1.86	0.42
1:D:110:TYR:OH	1:D:239:ASP:OD2	2.33	0.42
1:G:200:ARG:HD2	1:G:221:VAL:O	2.19	0.42
1:I:227:GLU:OE2	1:I:230:ARG:NH1	2.52	0.42
1:C:163:PRO:HG2	1:C:166:GLN:NE2	2.35	0.42
1:G:182:HIS:ND1	2:G:303:HOH:O	2.34	0.42
1:B:238:THR:HG21	1:D:220:PRO:HG3	2.02	0.41
1:A:76:LEU:HD12	1:A:186:LYS:HB3	2.03	0.41
1:A:240:LYS:HE3	1:A:240:LYS:HB3	1.90	0.41
1:B:109:LYS:HD3	1:B:144:GLU:HG2	2.02	0.41
1:D:172:ILE:HG13	1:D:174:ILE:H	1.85	0.41
1:E:110:TYR:CD2	1:E:206:ASP:HA	2.55	0.41
1:G:240:LYS:HE3	1:G:240:LYS:HB3	1.91	0.41
1:J:219:LEU:N	1:J:220:PRO:HD2	2.35	0.41
1:C:240:LYS:HE3	1:C:240:LYS:HB3	1.90	0.41
1:J:172:ILE:HG13	1:J:174:ILE:H	1.86	0.41
1:A:200:ARG:NE	1:A:219:LEU:O	2.54	0.41
1:C:101:LEU:HD12	1:C:101:LEU:HA	1.92	0.41
1:D:164:ARG:NE	1:D:169:LEU:O	2.46	0.41
1:D:207:ASP:HB2	1:D:208:LYS:HE3	2.03	0.41
1:F:197:HIS:HE1	1:F:219:LEU:HD21	1.86	0.41
1:G:119:ASP:OD2	1:G:156:HIS:ND1	2.51	0.41
1:I:174:ILE:HD13	1:I:174:ILE:HA	1.87	0.41
1:B:174:ILE:HD13	1:B:174:ILE:HA	1.86	0.41
1:I:73:SER:O	1:I:73:SER:OG	2.29	0.41
1:B:151:ASP:HB2	1:B:156:HIS:CE1	2.56	0.40
1:H:200:ARG:HD2	1:H:221:VAL:O	2.21	0.40
1:E:240:LYS:HB3	1:E:240:LYS:HE3	1.88	0.40
1:B:119:ASP:OD2	1:B:156:HIS:ND1	2.53	0.40
1:F:240:LYS:HE3	1:F:240:LYS:HB3	1.88	0.40
1:E:151:ASP:HB2	1:E:156:HIS:CE1	2.56	0.40

There are no symmetry-related clashes.

5.3 Torsion angles [i](#)

5.3.1 Protein backbone [i](#)

In the following table, the Percentiles column shows the percent Ramachandran outliers of the chain as a percentile score with respect to all PDB entries followed by that with respect to all EM entries.

The Analysed column shows the number of residues for which the backbone conformation was analysed, and the total number of residues.

Mol	Chain	Analysed	Favoured	Allowed	Outliers	Percentiles	
1	A	174/271 (64%)	169 (97%)	5 (3%)	0	100	100
1	B	174/271 (64%)	168 (97%)	6 (3%)	0	100	100
1	C	174/271 (64%)	170 (98%)	4 (2%)	0	100	100
1	D	174/271 (64%)	168 (97%)	6 (3%)	0	100	100
1	E	174/271 (64%)	169 (97%)	5 (3%)	0	100	100
1	F	174/271 (64%)	168 (97%)	6 (3%)	0	100	100
1	G	174/271 (64%)	167 (96%)	7 (4%)	0	100	100
1	H	174/271 (64%)	169 (97%)	5 (3%)	0	100	100
1	I	174/271 (64%)	167 (96%)	7 (4%)	0	100	100
1	J	174/271 (64%)	169 (97%)	5 (3%)	0	100	100
All	All	1740/2710 (64%)	1684 (97%)	56 (3%)	0	100	100

There are no Ramachandran outliers to report.

5.3.2 Protein sidechains [i](#)

In the following table, the Percentiles column shows the percent sidechain outliers of the chain as a percentile score with respect to all PDB entries followed by that with respect to all EM entries.

The Analysed column shows the number of residues for which the sidechain conformation was analysed, and the total number of residues.

Mol	Chain	Analysed	Rotameric	Outliers	Percentiles	
1	A	155/232 (67%)	154 (99%)	1 (1%)	86	93
1	B	155/232 (67%)	154 (99%)	1 (1%)	86	93
1	C	155/232 (67%)	154 (99%)	1 (1%)	86	93
1	D	155/232 (67%)	154 (99%)	1 (1%)	86	93

Continued on next page...

Continued from previous page...

Mol	Chain	Analysed	Rotameric	Outliers	Percentiles	
1	E	155/232 (67%)	154 (99%)	1 (1%)	86	93
1	F	155/232 (67%)	155 (100%)	0	100	100
1	G	155/232 (67%)	155 (100%)	0	100	100
1	H	155/232 (67%)	155 (100%)	0	100	100
1	I	155/232 (67%)	155 (100%)	0	100	100
1	J	155/232 (67%)	155 (100%)	0	100	100
All	All	1550/2320 (67%)	1545 (100%)	5 (0%)	92	96

All (5) residues with a non-rotameric sidechain are listed below:

Mol	Chain	Res	Type
1	A	223	ARG
1	B	213	GLN
1	C	223	ARG
1	D	218	ASP
1	E	213	GLN

Sometimes sidechains can be flipped to improve hydrogen bonding and reduce clashes. All (2) such sidechains are listed below:

Mol	Chain	Res	Type
1	B	213	GLN
1	C	72	HIS

5.3.3 RNA [i](#)

There are no RNA molecules in this entry.

5.4 Non-standard residues in protein, DNA, RNA chains [i](#)

There are no non-standard protein/DNA/RNA residues in this entry.

5.5 Carbohydrates [i](#)

There are no monosaccharides in this entry.

5.6 Ligand geometry [i](#)

There are no ligands in this entry.

5.7 Other polymers [i](#)

There are no such residues in this entry.

5.8 Polymer linkage issues [i](#)

There are no chain breaks in this entry.

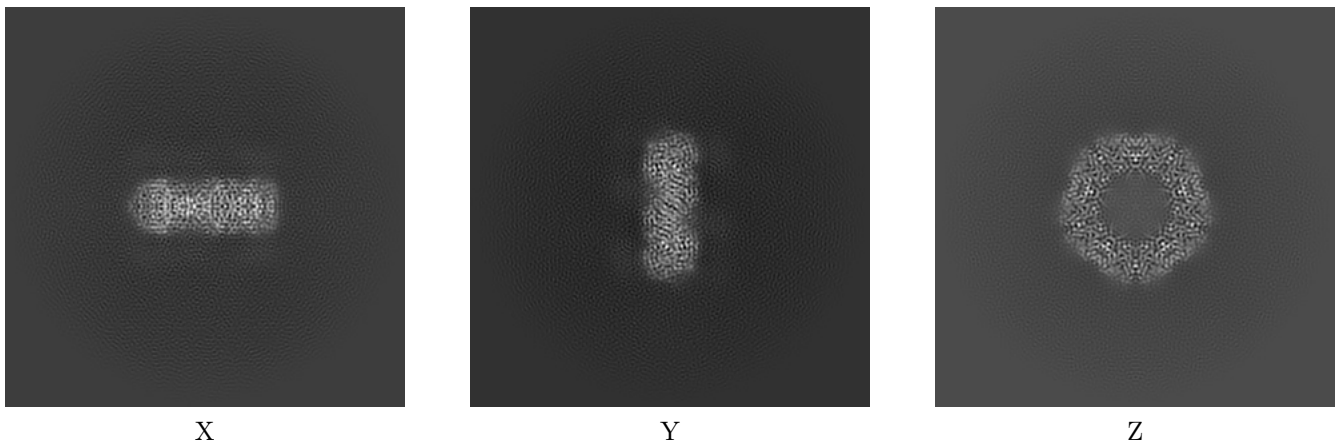
6 Map visualisation [i](#)

This section contains visualisations of the EMDB entry EMD-28214. These allow visual inspection of the internal detail of the map and identification of artifacts.

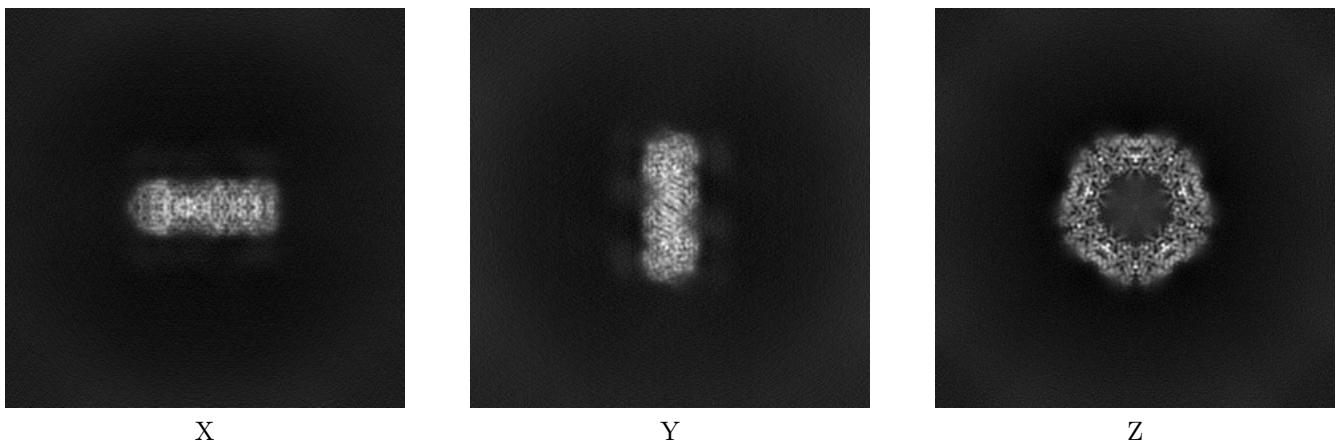
Images derived from a raw map, generated by summing the deposited half-maps, are presented below the corresponding image components of the primary map to allow further visual inspection and comparison with those of the primary map.

6.1 Orthogonal projections [i](#)

6.1.1 Primary map



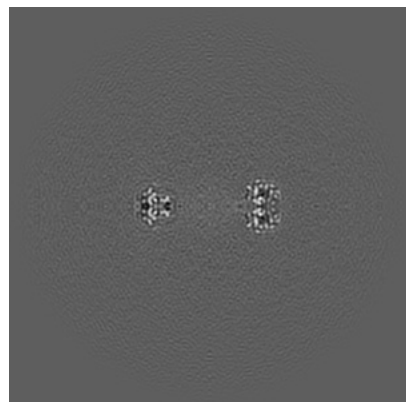
6.1.2 Raw map



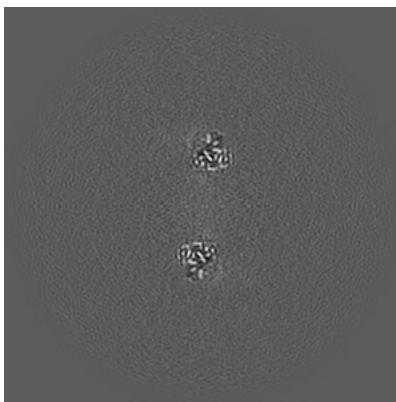
The images above show the map projected in three orthogonal directions.

6.2 Central slices [i](#)

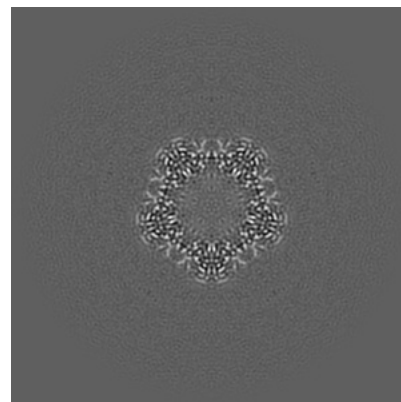
6.2.1 Primary map



X Index: 150

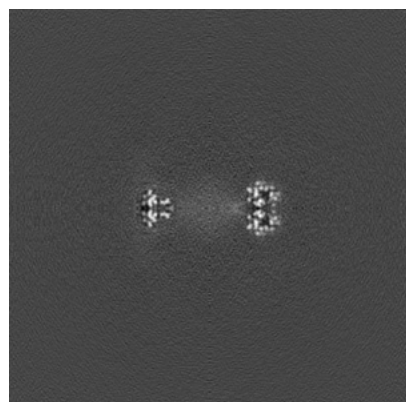


Y Index: 150

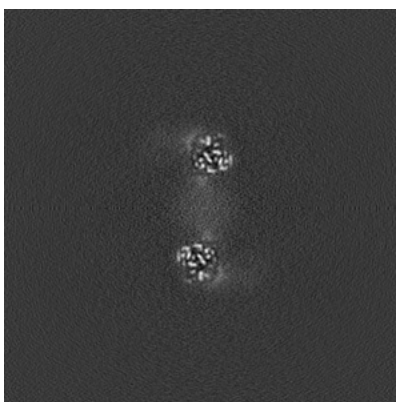


Z Index: 150

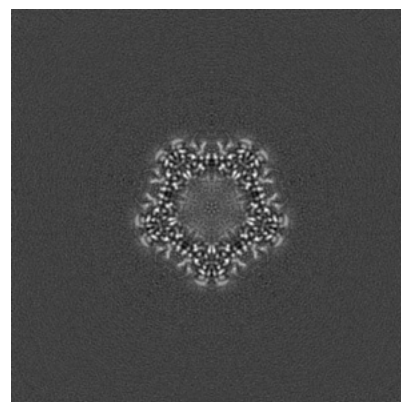
6.2.2 Raw map



X Index: 150



Y Index: 150

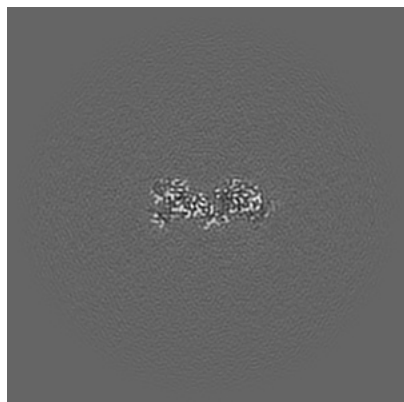


Z Index: 150

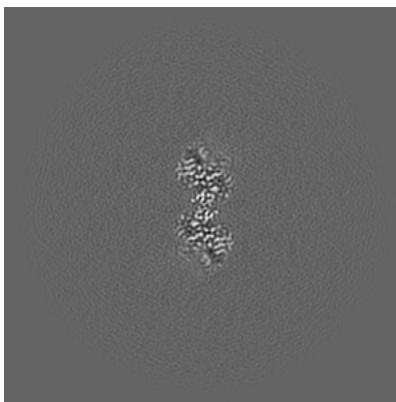
The images above show central slices of the map in three orthogonal directions.

6.3 Largest variance slices [i](#)

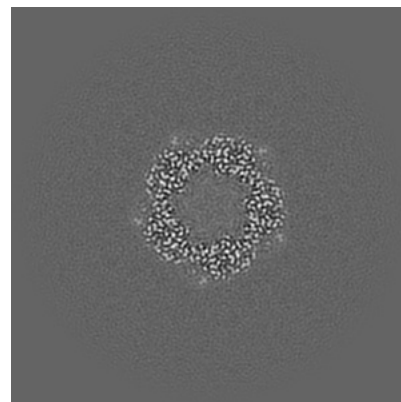
6.3.1 Primary map



X Index: 120

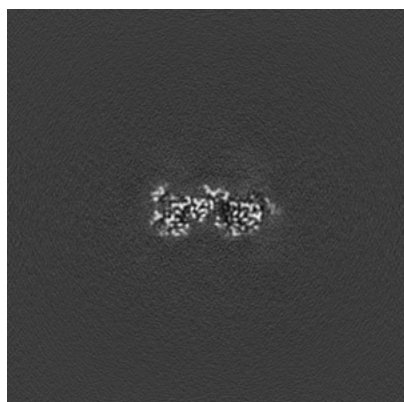


Y Index: 120

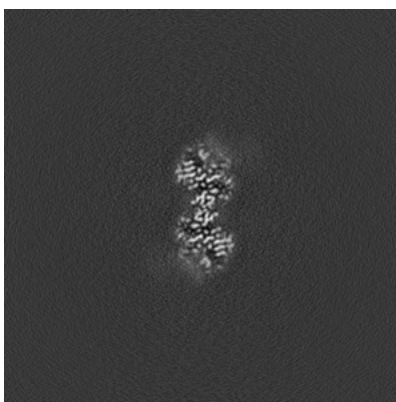


Z Index: 154

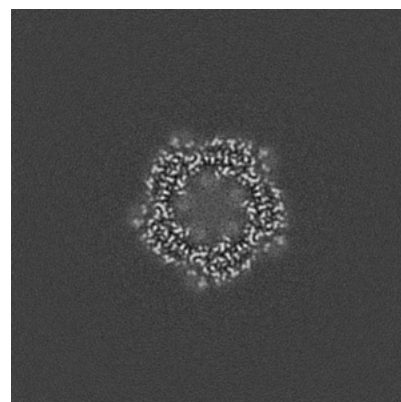
6.3.2 Raw map



X Index: 180



Y Index: 120

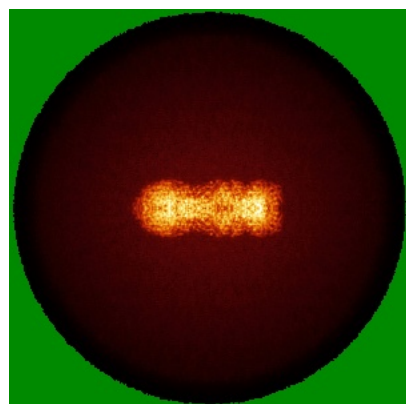


Z Index: 153

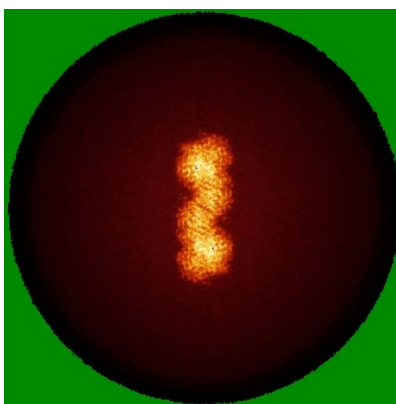
The images above show the largest variance slices of the map in three orthogonal directions.

6.4 Orthogonal standard-deviation projections (False-color) [i](#)

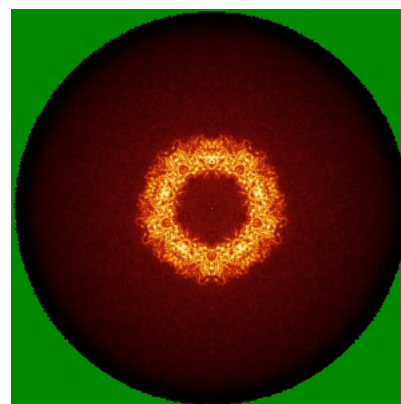
6.4.1 Primary map



X

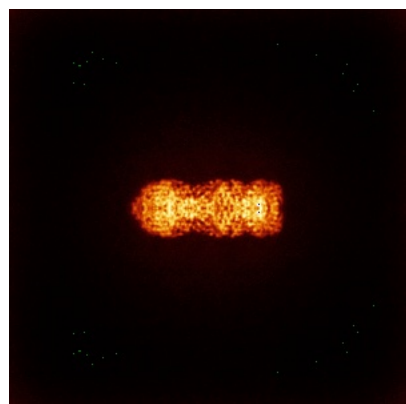


Y

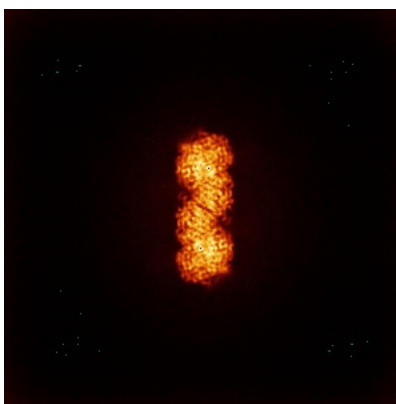


Z

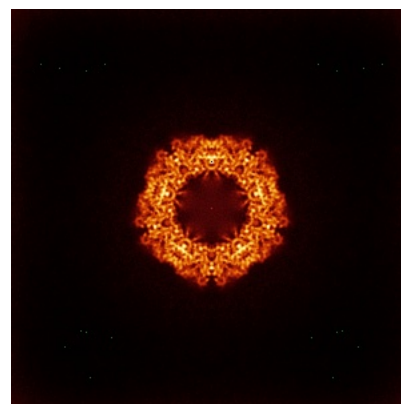
6.4.2 Raw map



X



Y

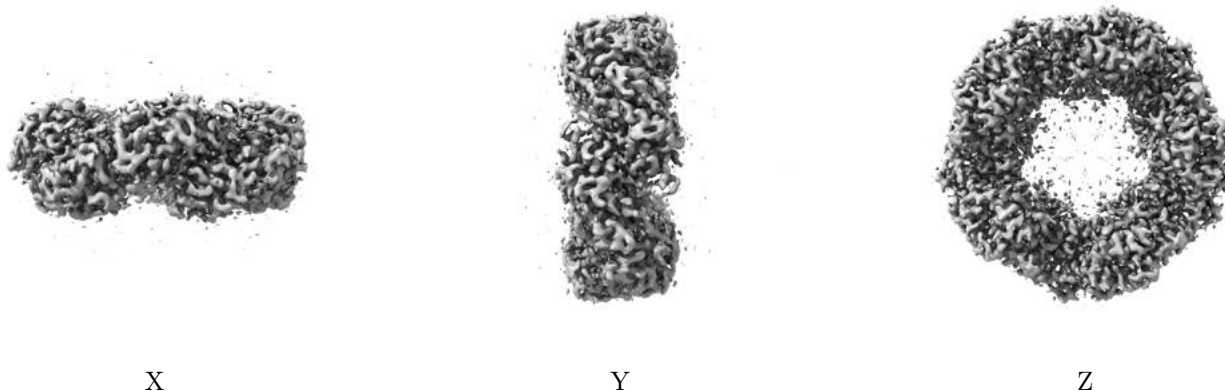


Z

The images above show the map standard deviation projections with false color in three orthogonal directions. Minimum values are shown in green, max in blue, and dark to light orange shades represent small to large values respectively.

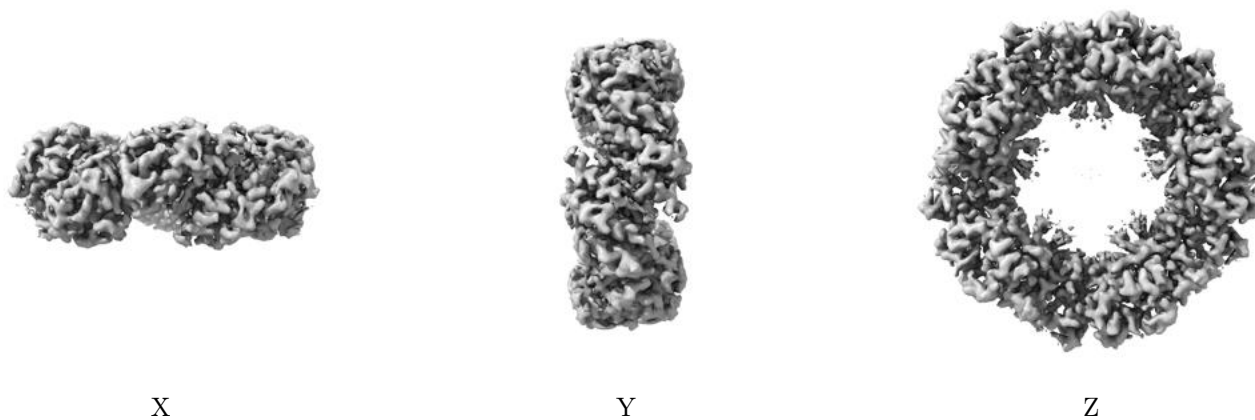
6.5 Orthogonal surface views [i](#)

6.5.1 Primary map



The images above show the 3D surface view of the map at the recommended contour level 0.37. These images, in conjunction with the slice images, may facilitate assessment of whether an appropriate contour level has been provided.

6.5.2 Raw map



These images show the 3D surface of the raw map. The raw map's contour level was selected so that its surface encloses the same volume as the primary map does at its recommended contour level.

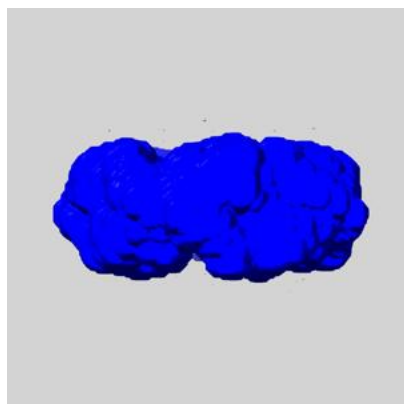
6.6 Mask visualisation [i](#)

This section shows the 3D surface view of the primary map at 50% transparency overlaid with the specified mask at 0% transparency

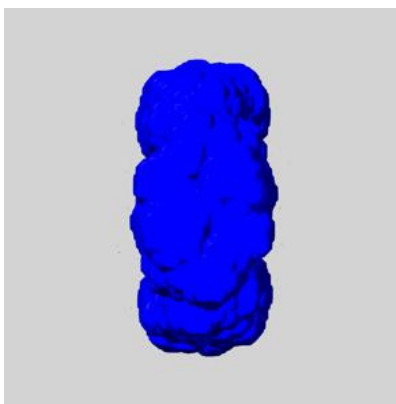
A mask typically either:

- Encompasses the whole structure
- Separates out a domain, a functional unit, a monomer or an area of interest from a larger structure

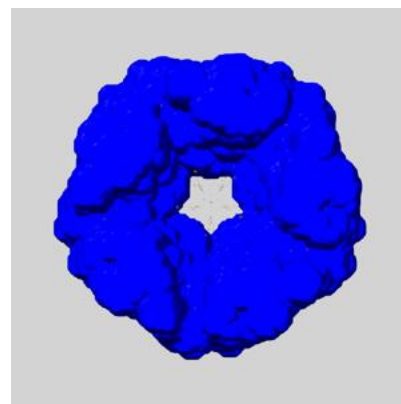
6.6.1 emd_28214_msk_1.map [i](#)



X



Y

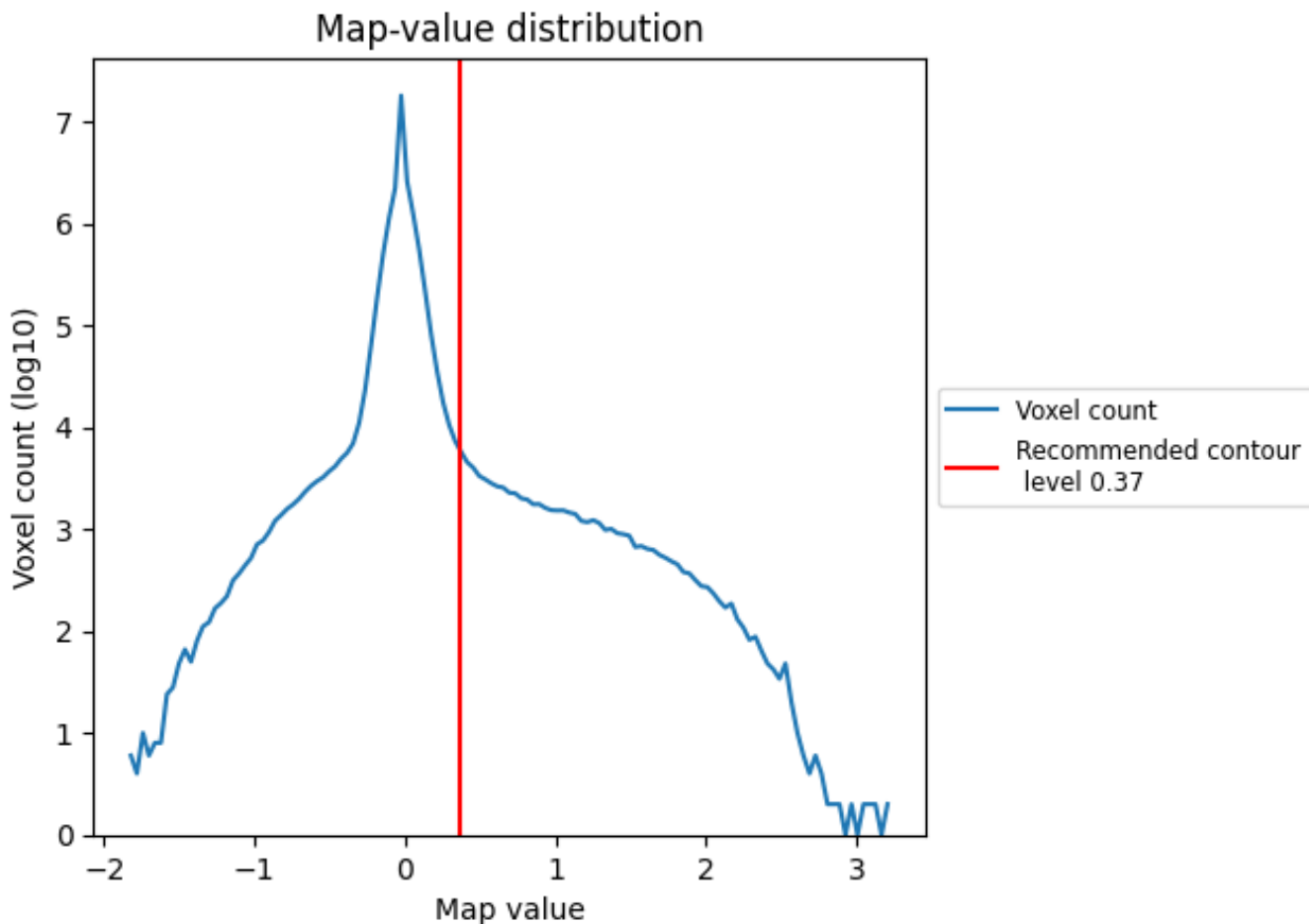


Z

7 Map analysis [i](#)

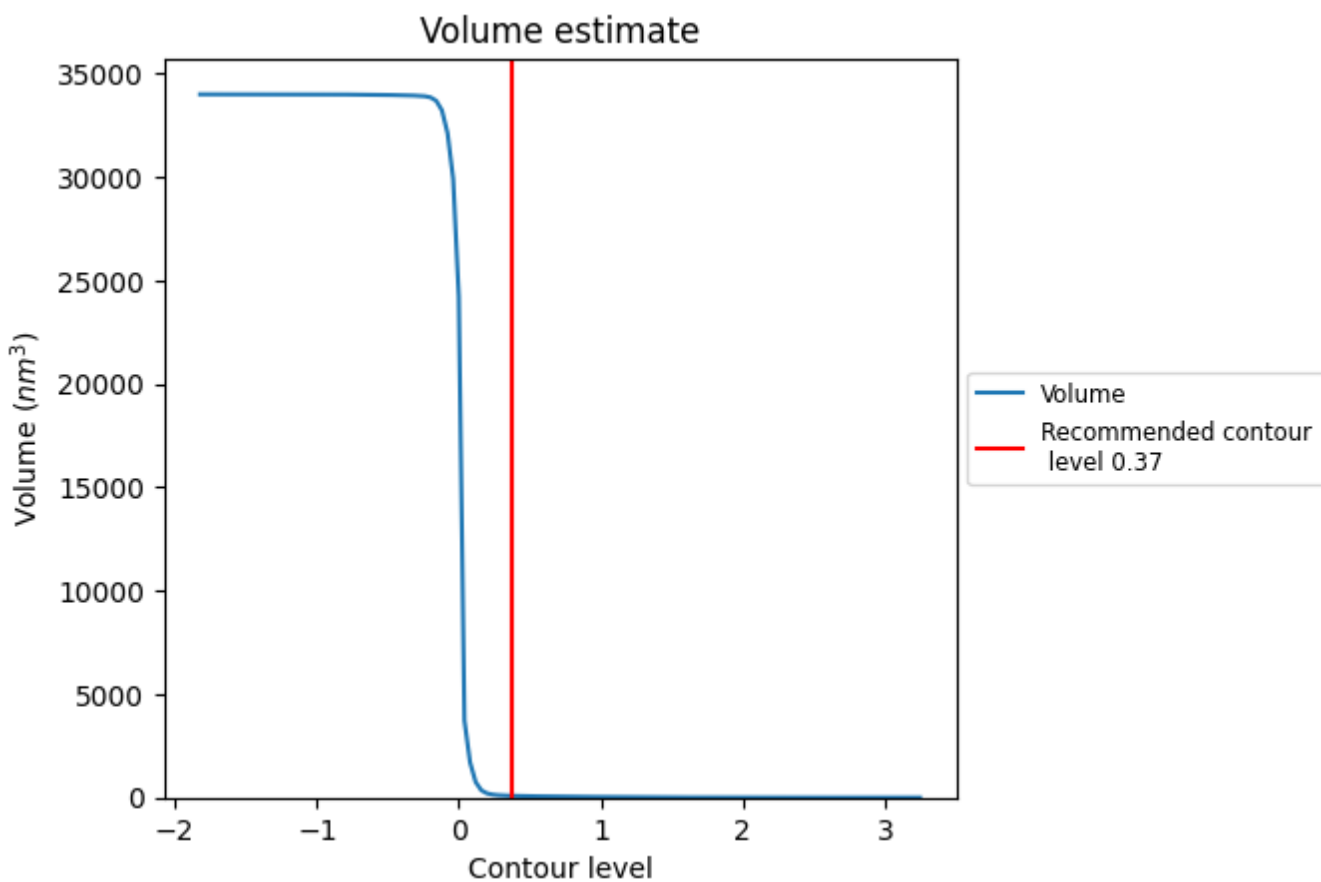
This section contains the results of statistical analysis of the map.

7.1 Map-value distribution [i](#)



The map-value distribution is plotted in 128 intervals along the x-axis. The y-axis is logarithmic. A spike in this graph at zero usually indicates that the volume has been masked.

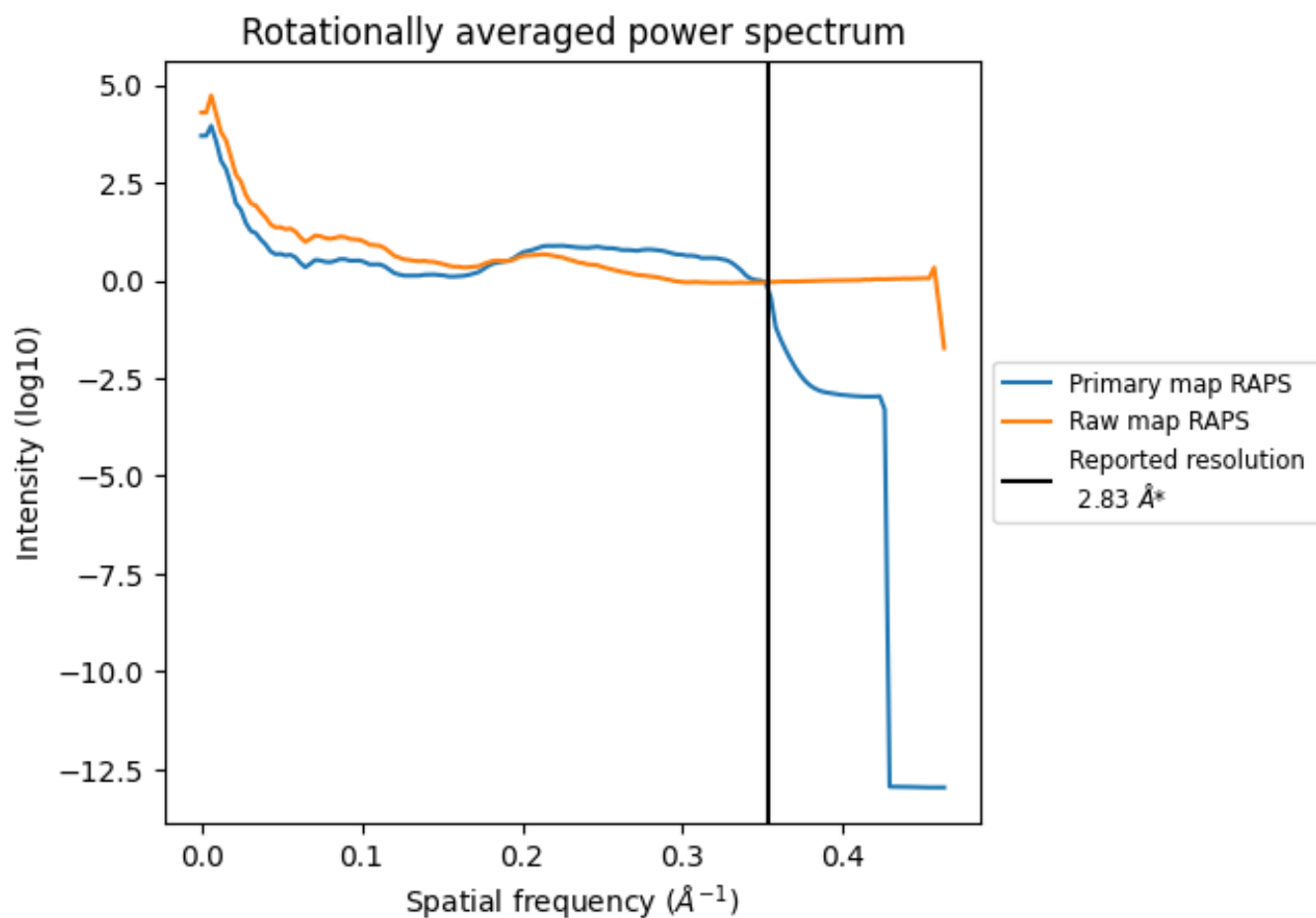
7.2 Volume estimate [i](#)



The volume at the recommended contour level is 85 nm³; this corresponds to an approximate mass of 77 kDa.

The volume estimate graph shows how the enclosed volume varies with the contour level. The recommended contour level is shown as a vertical line and the intersection between the line and the curve gives the volume of the enclosed surface at the given level.

7.3 Rotationally averaged power spectrum [i](#)

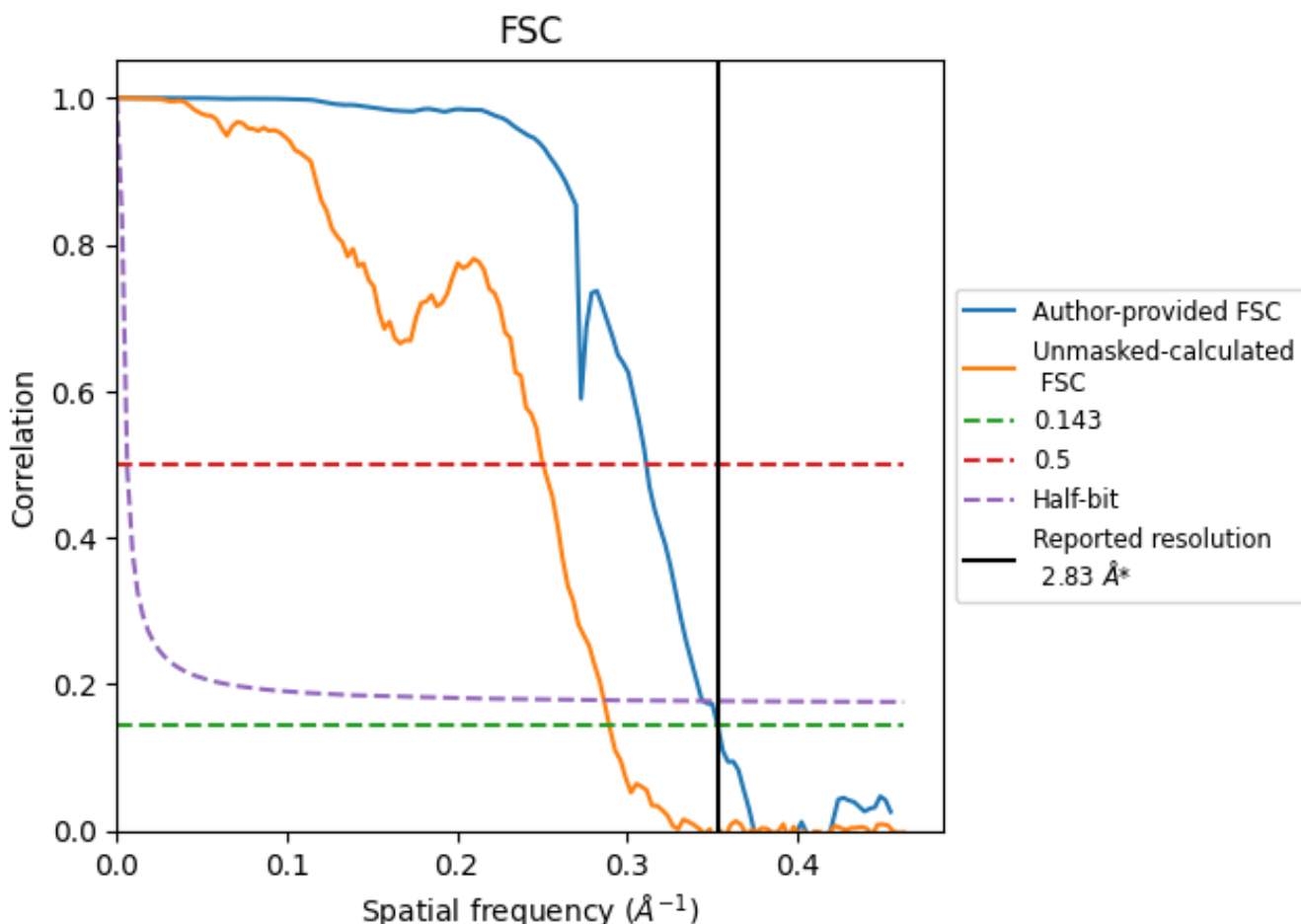


*Reported resolution corresponds to spatial frequency of 0.353 Å⁻¹

8 Fourier-Shell correlation [i](#)

Fourier-Shell Correlation (FSC) is the most commonly used method to estimate the resolution of single-particle and subtomogram-averaged maps. The shape of the curve depends on the imposed symmetry, mask and whether or not the two 3D reconstructions used were processed from a common reference. The reported resolution is shown as a black line. A curve is displayed for the half-bit criterion in addition to lines showing the 0.143 gold standard cut-off and 0.5 cut-off.

8.1 FSC [i](#)



*Reported resolution corresponds to spatial frequency of 0.353 Å⁻¹

8.2 Resolution estimates [i](#)

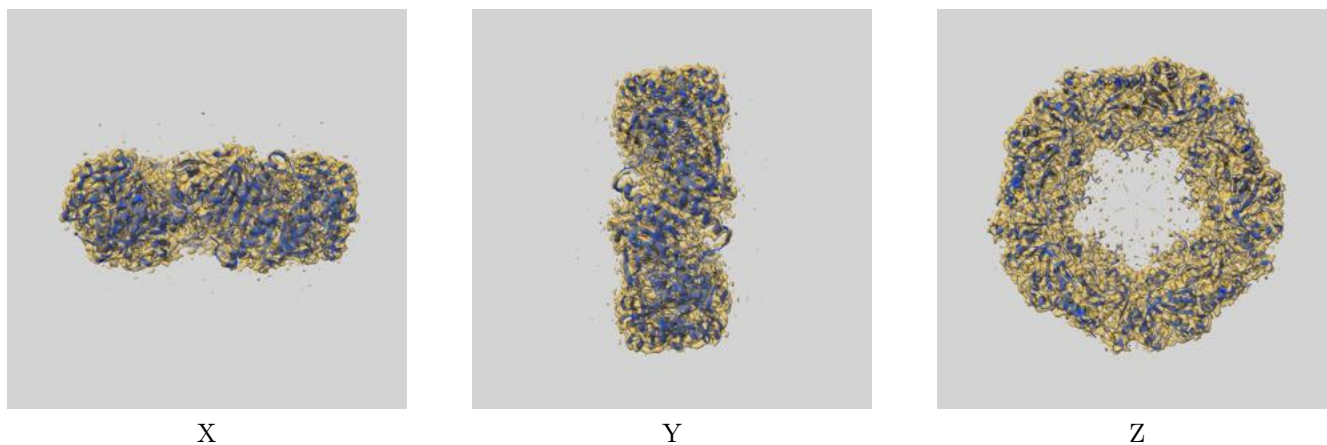
Resolution estimate (Å)	Estimation criterion (FSC cut-off)		
	0.143	0.5	Half-bit
Reported by author	2.83	-	-
Author-provided FSC curve	2.83	3.21	2.90
Unmasked-calculated*	3.45	3.99	3.49

*Resolution estimate based on FSC curve calculated by comparison of deposited half-maps. The value from deposited half-maps intersecting FSC 0.143 CUT-OFF 3.45 differs from the reported value 2.83 by more than 10 %

9 Map-model fit [i](#)

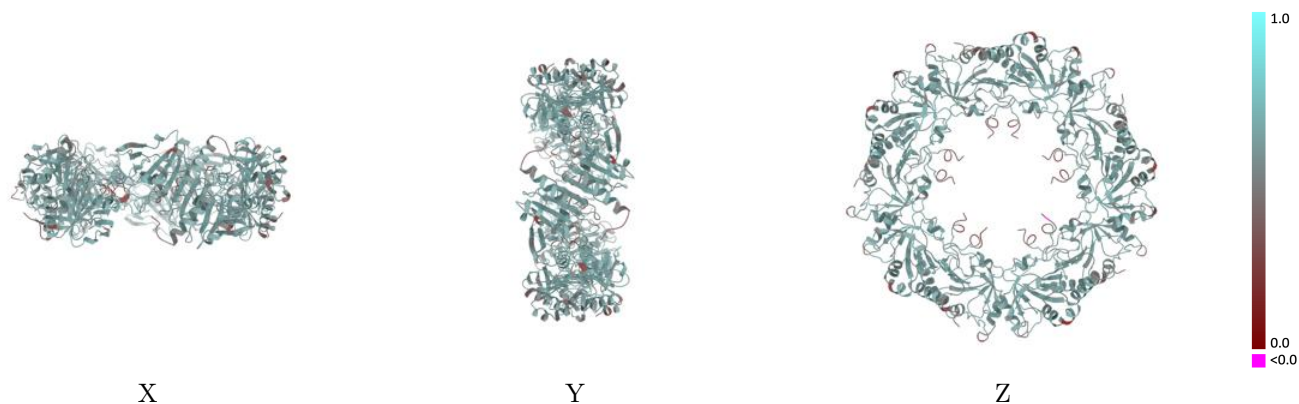
This section contains information regarding the fit between EMDB map EMD-28214 and PDB model 8EKW. Per-residue inclusion information can be found in section 3 on page 6.

9.1 Map-model overlay [i](#)



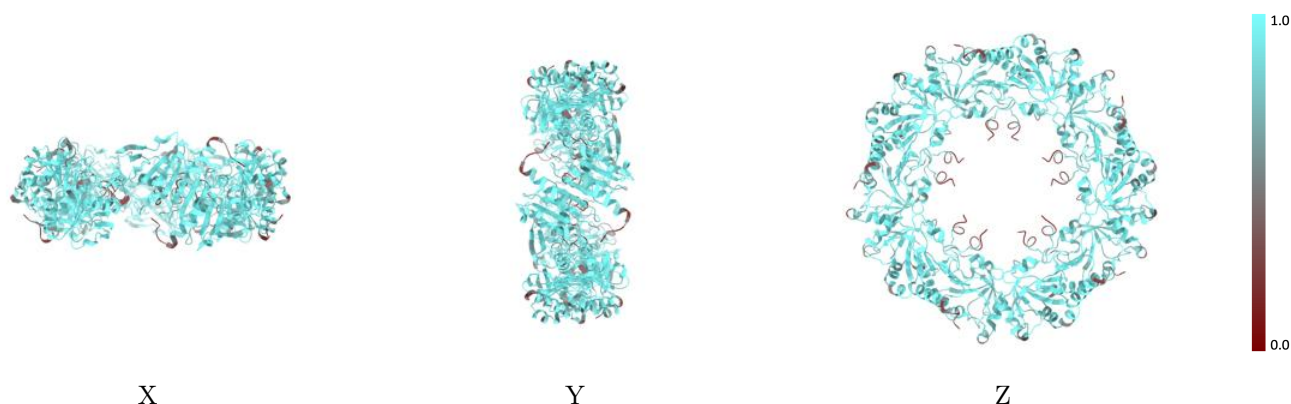
The images above show the 3D surface view of the map at the recommended contour level 0.37 at 50% transparency in yellow overlaid with a ribbon representation of the model coloured in blue. These images allow for the visual assessment of the quality of fit between the atomic model and the map.

9.2 Q-score mapped to coordinate model [\(i\)](#)



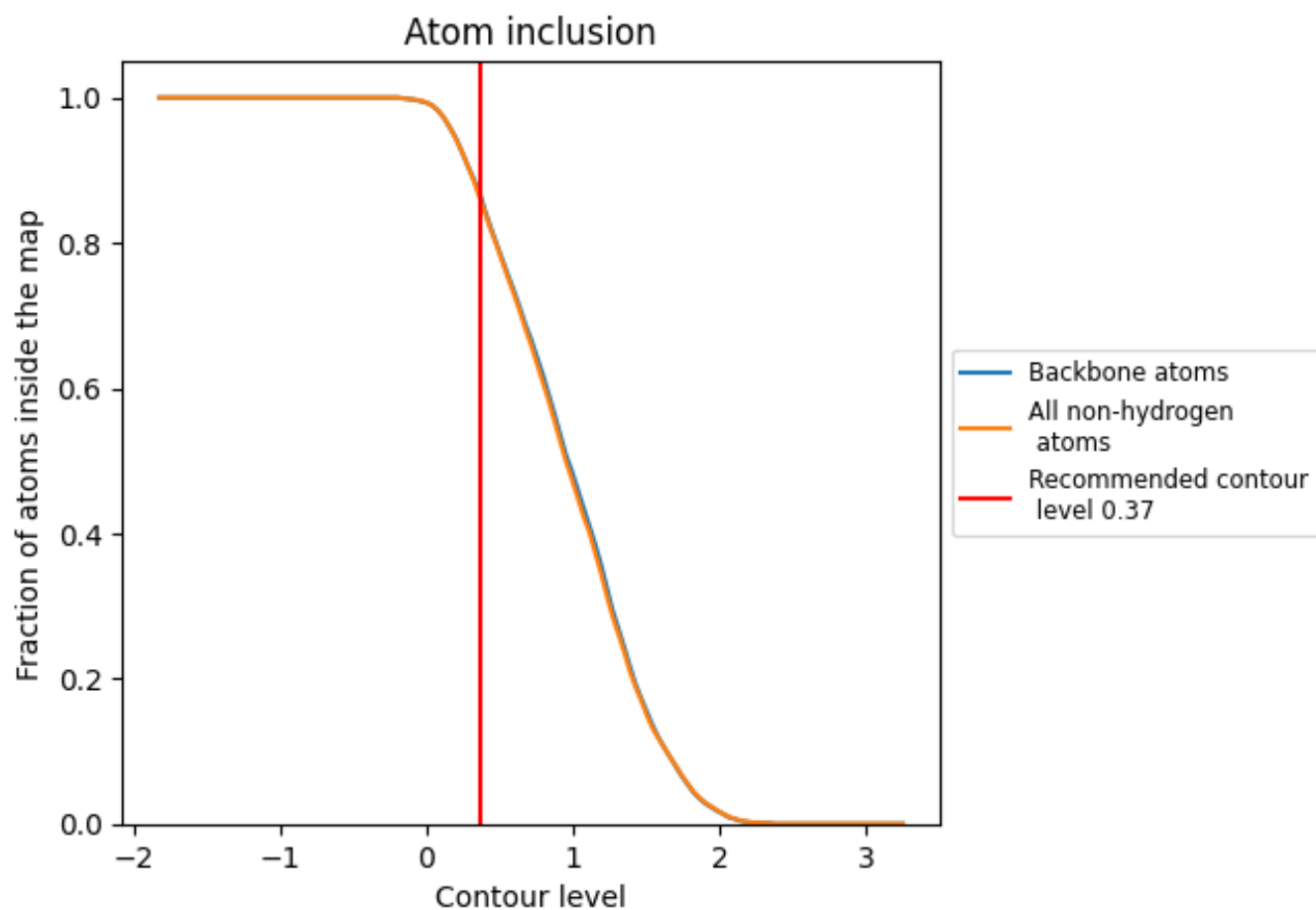
The images above show the model with each residue coloured according to its Q-score. This shows their resolvability in the map with higher Q-score values reflecting better resolvability. Please note: Q-score is calculating the resolvability of atoms, and thus high values are only expected at resolutions at which atoms can be resolved. Low Q-score values may therefore be expected for many entries.

9.3 Atom inclusion mapped to coordinate model [\(i\)](#)



The images above show the model with each residue coloured according to its atom inclusion. This shows to what extent they are inside the map at the recommended contour level (0.37).























9.4 Atom inclusion [i](#)



At the recommended contour level, 86% of all backbone atoms, 86% of all non-hydrogen atoms, are inside the map.

9.5 Map-model fit summary

The table lists the average atom inclusion at the recommended contour level (0.37) and Q-score for the entire model and for each chain.

Chain	Atom inclusion	Q-score
All	 0.8580	 0.5800
A	 0.8590	 0.5780
B	 0.8650	 0.5840
C	 0.8560	 0.5780
D	 0.8620	 0.5790
E	 0.8660	 0.5850
F	 0.8620	 0.5750
G	 0.8590	 0.5820
H	 0.8620	 0.5790
I	 0.8590	 0.5800
J	 0.8580	 0.5810

