



# wwPDB X-ray Structure Validation Summary Report ⓘ

Dec 4, 2023 – 02:29 PM EST

PDB ID : 8F9B  
Title : Compound 19 bound to procaspase-6  
Authors : Fan, P.; Zhao, Y.; Renslo, A.R.; Arkin, M.R.  
Deposited on : 2022-11-23  
Resolution : 2.65 Å(reported)

This is a wwPDB X-ray Structure Validation Summary Report for a publicly released PDB entry.

We welcome your comments at [validation@mail.wwpdb.org](mailto:validation@mail.wwpdb.org)

A user guide is available at

<https://www.wwpdb.org/validation/2017/XrayValidationReportHelp>

with specific help available everywhere you see the ⓘ symbol.

The types of validation reports are described at

<http://www.wwpdb.org/validation/2017/FAQs#types>.

---

The following versions of software and data (see [references ⓘ](#)) were used in the production of this report:

MolProbity : 4.02b-467  
Mogul : 1.8.5 (274361), CSD as541be (2020)  
Xtriage (Phenix) : 1.13  
EDS : 2.36  
buster-report : 1.1.7 (2018)  
Percentile statistics : 20191225.v01 (using entries in the PDB archive December 25th 2019)  
Refmac : 5.8.0158  
CCP4 : 7.0.044 (Gargrove)  
Ideal geometry (proteins) : Engh & Huber (2001)  
Ideal geometry (DNA, RNA) : Parkinson et al. (1996)  
Validation Pipeline (wwPDB-VP) : 2.36

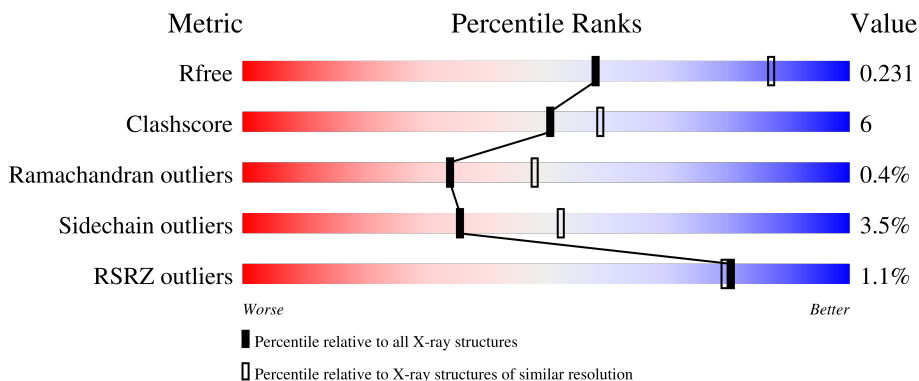
# 1 Overall quality at a glance

The following experimental techniques were used to determine the structure:

*X-RAY DIFFRACTION*

The reported resolution of this entry is 2.65 Å.

Percentile scores (ranging between 0-100) for global validation metrics of the entry are shown in the following graphic. The table shows the number of entries on which the scores are based.



Metric	Whole archive (#Entries)	Similar resolution (#Entries, resolution range(Å))
$R_{free}$	130704	1332 (2.68-2.64)
Clashscore	141614	1374 (2.68-2.64)
Ramachandran outliers	138981	1349 (2.68-2.64)
Sidechain outliers	138945	1349 (2.68-2.64)
RSRZ outliers	127900	1318 (2.68-2.64)

The table below summarises the geometric issues observed across the polymeric chains and their fit to the electron density. The red, orange, yellow and green segments of the lower bar indicate the fraction of residues that contain outliers for  $\geq 3$ , 2, 1 and 0 types of geometric quality criteria respectively. A grey segment represents the fraction of residues that are not modelled. The numeric value for each fraction is indicated below the corresponding segment, with a dot representing fractions  $\leq 5\%$ . The upper red bar (where present) indicates the fraction of residues that have poor fit to the electron density. The numeric value is given above the bar.

Mol	Chain	Length	Quality of chain
1	A	299	 70% 11% 18%
1	B	299	 69% 12% 18%
1	C	299	 72% 12% 16%
1	D	299	 72% 12% 16%

## 2 Entry composition [i](#)

There are 3 unique types of molecules in this entry. The entry contains 8291 atoms, of which 0 are hydrogens and 0 are deuteriums.

In the tables below, the ZeroOcc column contains the number of atoms modelled with zero occupancy, the AltConf column contains the number of residues with at least one atom in alternate conformation and the Trace column contains the number of residues modelled with at most 2 atoms.

- Molecule 1 is a protein called Procaspase-6.

Mol	Chain	Residues	Atoms					ZeroOcc	AltConf	Trace
			Total	C	N	O	S			
1	A	245	1972	1258	342	357	15	0	1	0
1	B	245	1967	1254	342	357	14	0	0	0
1	C	251	2029	1296	350	368	15	0	1	0
1	D	251	2029	1296	350	368	15	0	1	0

There are 28 discrepancies between the modelled and reference sequences:

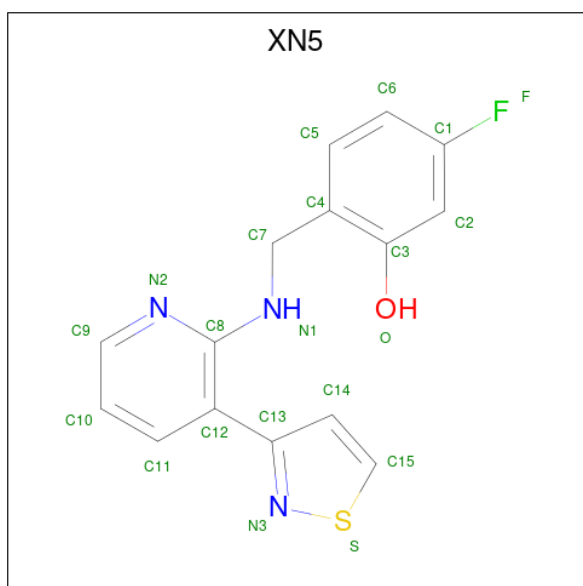
Chain	Residue	Modelled	Actual	Comment	Reference
A	163	ALA	CYS	conflict	UNP P55212
A	294	GLU	-	expression tag	UNP P55212
A	295	ASN	-	expression tag	UNP P55212
A	296	LEU	-	expression tag	UNP P55212
A	297	TYR	-	expression tag	UNP P55212
A	298	PHE	-	expression tag	UNP P55212
A	299	GLN	-	expression tag	UNP P55212
B	163	ALA	CYS	conflict	UNP P55212
B	294	GLU	-	expression tag	UNP P55212
B	295	ASN	-	expression tag	UNP P55212
B	296	LEU	-	expression tag	UNP P55212
B	297	TYR	-	expression tag	UNP P55212
B	298	PHE	-	expression tag	UNP P55212
B	299	GLN	-	expression tag	UNP P55212
C	163	ALA	CYS	conflict	UNP P55212
C	294	GLU	-	expression tag	UNP P55212
C	295	ASN	-	expression tag	UNP P55212
C	296	LEU	-	expression tag	UNP P55212
C	297	TYR	-	expression tag	UNP P55212
C	298	PHE	-	expression tag	UNP P55212
C	299	GLN	-	expression tag	UNP P55212

*Continued on next page...*

Continued from previous page...

Chain	Residue	Modelled	Actual	Comment	Reference
D	163	ALA	CYS	conflict	UNP P55212
D	294	GLU	-	expression tag	UNP P55212
D	295	ASN	-	expression tag	UNP P55212
D	296	LEU	-	expression tag	UNP P55212
D	297	TYR	-	expression tag	UNP P55212
D	298	PHE	-	expression tag	UNP P55212
D	299	GLN	-	expression tag	UNP P55212

- Molecule 2 is 5-fluoro-2-({[(3M)-3-(1,2-thiazol-3-yl)pyridin-2-yl]amino}methyl)phenol (three-letter code: XN5) (formula: C<sub>15</sub>H<sub>12</sub>FN<sub>3</sub>OS) (labeled as "Ligand of Interest" by depositor).



Mol	Chain	Residues	Atoms					ZeroOcc	AltConf	
			Total	C	F	N	O			S
2	A	1	Total	C	F	N	O	S	0	1
			42	30	2	6	2	2		
2	C	1	Total	C	F	N	O	S	0	1
			42	30	2	6	2	2		

- Molecule 3 is water.

Mol	Chain	Residues	Atoms		ZeroOcc	AltConf
3	A	52	Total	O	0	0
			52	52		
3	B	51	Total	O	0	0
			51	51		
3	C	52	Total	O	0	0
			52	52		

Continued on next page...

*Continued from previous page...*

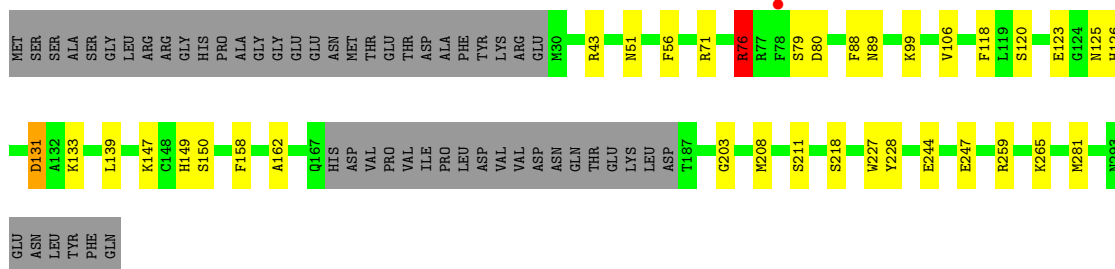
<b>Mol</b>	<b>Chain</b>	<b>Residues</b>	<b>Atoms</b>		<b>ZeroOcc</b>	<b>AltConf</b>
3	D	55	Total	O	0	0
			55	55		

### 3 Residue-property plots [i](#)

These plots are drawn for all protein, RNA, DNA and oligosaccharide chains in the entry. The first graphic for a chain summarises the proportions of the various outlier classes displayed in the second graphic. The second graphic shows the sequence view annotated by issues in geometry and electron density. Residues are color-coded according to the number of geometric quality criteria for which they contain at least one outlier: green = 0, yellow = 1, orange = 2 and red = 3 or more. A red dot above a residue indicates a poor fit to the electron density ( $RSRZ > 2$ ). Stretches of 2 or more consecutive residues without any outlier are shown as a green connector. Residues present in the sample, but not in the model, are shown in grey.

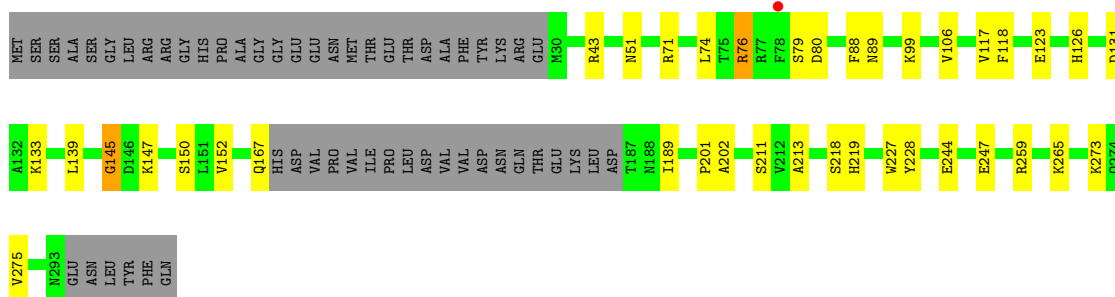
- Molecule 1: Procaspase-6

Chain A:  70% 11% 18%



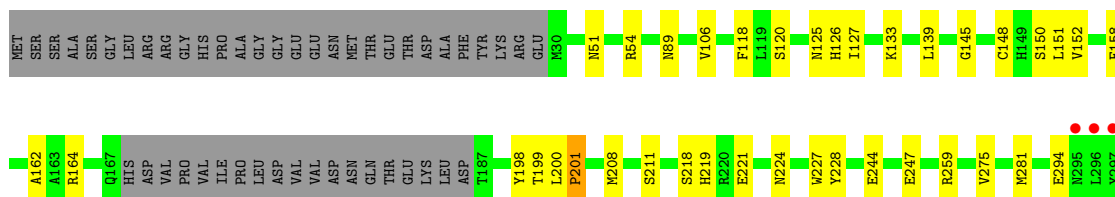
- Molecule 1: Procaspase-6

Chain B:  69% 12% 18%



- Molecule 1: Procaspase-6

Chain C:  72% 12% 16%



F298  
Q299

● Molecule 1: Procaspase-6

Chain D:  2% 72% 12% 16%

MET SER SER SER SER GLY LEU ARG ARG HIS HIS PRO ALA GLY GLY GLU ASN MET THR GLU ASP THR ASP ALA PHE TYR LYS ARG GLU K30  
M51 R76 E84 F88 M89 E94 K99 V106 F118 L119 S120 M125 H126 K133 L139 G145 C148

H149 S150 L151 V152 F158 A162 Q167 HIS ASP VAL PRO VAL ILE PRO LEU ASP VAL VAL ASP ASN GLN THR GLU LYS LEU ASP T187  
Y198 T199 L200 P201 M208 S211 S218 H219 W227 Y228 E244 E247 R259 K273 Q274 V275 W281 E294 N295

L296 Y297 F298 Q299

## 4 Data and refinement statistics i

Property	Value	Source
Space group	P 61	Depositor
Cell constants a, b, c, $\alpha$ , $\beta$ , $\gamma$	101.94Å 101.94Å 321.98Å 90.00° 90.00° 120.00°	Depositor
Resolution (Å)	52.08 – 2.65 52.03 – 2.65	Depositor EDS
% Data completeness (in resolution range)	100.0 (52.08-2.65) 99.9 (52.03-2.65)	Depositor EDS
$R_{merge}$	0.11	Depositor
$R_{sym}$	(Not available)	Depositor
$\langle I/\sigma(I) \rangle$ <sup>1</sup>	2.62 (at 2.65Å)	Xtrriage
Refinement program	REFMAC 5.8.0238	Depositor
R, $R_{free}$	0.193 , 0.230 0.198 , 0.231	Depositor DCC
$R_{free}$ test set	2643 reflections (4.83%)	wwPDB-VP
Wilson B-factor (Å <sup>2</sup> )	56.1	Xtrriage
Anisotropy	0.759	Xtrriage
Bulk solvent $k_{sol}$ (e/Å <sup>3</sup> ), $B_{sol}$ (Å <sup>2</sup> )	0.32 , 43.0	EDS
L-test for twinning <sup>2</sup>	$\langle  L  \rangle = 0.52$ , $\langle L^2 \rangle = 0.36$	Xtrriage
Estimated twinning fraction	0.488 for h,-h-k,-l	Xtrriage
$F_o, F_c$ correlation	0.95	EDS
Total number of atoms	8291	wwPDB-VP
Average B, all atoms (Å <sup>2</sup> )	73.0	wwPDB-VP

Xtrriage's analysis on translational NCS is as follows: *The largest off-origin peak in the Patterson function is 3.91% of the height of the origin peak. No significant pseudotranslation is detected.*

<sup>1</sup>Intensities estimated from amplitudes.

<sup>2</sup>Theoretical values of  $\langle |L| \rangle$ ,  $\langle L^2 \rangle$  for acentric reflections are 0.5, 0.333 respectively for untwinned datasets, and 0.375, 0.2 for perfectly twinned datasets.



## 5 Model quality [i](#)

### 5.1 Standard geometry [i](#)

Bond lengths and bond angles in the following residue types are not validated in this section: XN5

The Z score for a bond length (or angle) is the number of standard deviations the observed value is removed from the expected value. A bond length (or angle) with  $|Z| > 5$  is considered an outlier worth inspection. RMSZ is the root-mean-square of all Z scores of the bond lengths (or angles).

Mol	Chain	Bond lengths		Bond angles	
		RMSZ	# Z  >5	RMSZ	# Z  >5
1	A	0.69	0/2020	0.87	2/2719 (0.1%)
1	B	0.69	0/2012	0.86	1/2709 (0.0%)
1	C	0.68	0/2079	0.84	0/2799
1	D	0.67	0/2079	0.83	0/2799
All	All	0.68	0/8190	0.85	3/11026 (0.0%)

There are no bond length outliers.

All (3) bond angle outliers are listed below:

Mol	Chain	Res	Type	Atoms	Z	Observed(°)	Ideal(°)
1	A	76	ARG	CG-CD-NE	-7.15	96.79	111.80
1	A	131	ASP	N-CA-CB	-5.62	100.49	110.60
1	B	131	ASP	N-CA-CB	-5.59	100.54	110.60

There are no chirality outliers.

There are no planarity outliers.

### 5.2 Too-close contacts [i](#)

In the following table, the Non-H and H(model) columns list the number of non-hydrogen atoms and hydrogen atoms in the chain respectively. The H(added) column lists the number of hydrogen atoms added and optimized by MolProbity. The Clashes column lists the number of clashes within the asymmetric unit, whereas Symm-Clashes lists symmetry-related clashes.

Mol	Chain	Non-H	H(model)	H(added)	Clashes	Symm-Clashes
1	A	1972	0	1945	22	0
1	B	1967	0	1936	20	0
1	C	2029	0	1994	29	0
1	D	2029	0	1994	31	0

*Continued on next page...*

Continued from previous page...

Mol	Chain	Non-H	H(model)	H(added)	Clashes	Symm-Clashes
2	A	42	0	0	2	0
2	C	42	0	0	3	0
3	A	52	0	0	3	0
3	B	51	0	0	2	0
3	C	52	0	0	1	0
3	D	55	0	0	3	0
All	All	8291	0	7869	91	0

The all-atom clashscore is defined as the number of clashes found per 1000 atoms (including hydrogen atoms). The all-atom clashscore for this structure is 6.

The worst 5 of 91 close contacts within the same asymmetric unit are listed below, sorted by their clash magnitude.

Atom-1	Atom-2	Interatomic distance (Å)	Clash overlap (Å)
1:C:51:ASN:HD22	1:C:89:ASN:HD22	1.36	0.73
1:D:51:ASN:HD22	1:D:89:ASN:HD22	1.36	0.73
1:B:51:ASN:HD22	1:B:89:ASN:HD22	1.40	0.70
1:A:51:ASN:HD22	1:A:89:ASN:HD22	1.40	0.69
1:C:201:PRO:HB2	1:C:281[A]:MET:SD	2.33	0.69

There are no symmetry-related clashes.

## 5.3 Torsion angles [i](#)

### 5.3.1 Protein backbone [i](#)

In the following table, the Percentiles column shows the percent Ramachandran outliers of the chain as a percentile score with respect to all X-ray entries followed by that with respect to entries of similar resolution.

The Analysed column shows the number of residues for which the backbone conformation was analysed, and the total number of residues.

Mol	Chain	Analysed	Favoured	Allowed	Outliers	Percentiles	
1	A	242/299 (81%)	228 (94%)	14 (6%)	0	100	100
1	B	241/299 (81%)	228 (95%)	10 (4%)	3 (1%)	13	19
1	C	248/299 (83%)	232 (94%)	16 (6%)	0	100	100
1	D	248/299 (83%)	232 (94%)	15 (6%)	1 (0%)	34	48
All	All	979/1196 (82%)	920 (94%)	55 (6%)	4 (0%)	34	48

All (4) Ramachandran outliers are listed below:

Mol	Chain	Res	Type
1	B	202	ALA
1	B	201	PRO
1	B	145	GLY
1	D	145	GLY

### 5.3.2 Protein sidechains [i](#)

In the following table, the Percentiles column shows the percent sidechain outliers of the chain as a percentile score with respect to all X-ray entries followed by that with respect to entries of similar resolution.

The Analysed column shows the number of residues for which the sidechain conformation was analysed, and the total number of residues.

Mol	Chain	Analysed	Rotameric	Outliers	Percentiles	
1	A	214/260 (82%)	206 (96%)	8 (4%)	34	50
1	B	213/260 (82%)	204 (96%)	9 (4%)	30	45
1	C	220/260 (85%)	212 (96%)	8 (4%)	35	51
1	D	220/260 (85%)	215 (98%)	5 (2%)	50	68
All	All	867/1040 (83%)	837 (96%)	30 (4%)	36	52

5 of 30 residues with a non-rotameric sidechain are listed below:

Mol	Chain	Res	Type
1	B	218	SER
1	D	150	SER
1	C	54	ARG
1	D	218	SER
1	C	294	GLU

Sometimes sidechains can be flipped to improve hydrogen bonding and reduce clashes. 5 of 21 such sidechains are listed below:

Mol	Chain	Res	Type
1	C	121	HIS
1	D	89	ASN
1	D	230	GLN
1	D	121	HIS
1	D	41	HIS

### 5.3.3 RNA [i](#)

There are no RNA molecules in this entry.

## 5.4 Non-standard residues in protein, DNA, RNA chains [i](#)

There are no non-standard protein/DNA/RNA residues in this entry.

## 5.5 Carbohydrates [i](#)

There are no monosaccharides in this entry.

## 5.6 Ligand geometry [i](#)

4 ligands are modelled in this entry.

In the following table, the Counts columns list the number of bonds (or angles) for which Mogul statistics could be retrieved, the number of bonds (or angles) that are observed in the model and the number of bonds (or angles) that are defined in the Chemical Component Dictionary. The Link column lists molecule types, if any, to which the group is linked. The Z score for a bond length (or angle) is the number of standard deviations the observed value is removed from the expected value. A bond length (or angle) with  $|Z| > 2$  is considered an outlier worth inspection. RMSZ is the root-mean-square of all Z scores of the bond lengths (or angles).

Mol	Type	Chain	Res	Link	Bond lengths			Bond angles		
					Counts	RMSZ	# Z  > 2	Counts	RMSZ	# Z  > 2
2	XN5	C	301[A]	-	21,23,23	1.78	2 (9%)	27,31,31	2.75	10 (37%)
2	XN5	A	301[B]	-	21,23,23	1.63	2 (9%)	27,31,31	2.22	9 (33%)
2	XN5	A	301[A]	-	21,23,23	1.57	1 (4%)	27,31,31	2.27	10 (37%)
2	XN5	C	301[B]	-	21,23,23	1.65	1 (4%)	27,31,31	2.37	9 (33%)

In the following table, the Chirals column lists the number of chiral outliers, the number of chiral centers analysed, the number of these observed in the model and the number defined in the Chemical Component Dictionary. Similar counts are reported in the Torsion and Rings columns. '-' means no outliers of that kind were identified.

Mol	Type	Chain	Res	Link	Chirals	Torsions	Rings
2	XN5	C	301[A]	-	-	3/8/9/9	0/3/3/3
2	XN5	A	301[B]	-	-	0/8/9/9	0/3/3/3
2	XN5	A	301[A]	-	-	2/8/9/9	0/3/3/3
2	XN5	C	301[B]	-	-	0/8/9/9	0/3/3/3

The worst 5 of 6 bond length outliers are listed below:

Mol	Chain	Res	Type	Atoms	Z	Observed(Å)	Ideal(Å)
2	C	301[A]	XN5	C8-N1	6.50	1.44	1.34
2	C	301[B]	XN5	C8-N1	6.29	1.44	1.34
2	A	301[B]	XN5	C8-N1	6.19	1.44	1.34
2	A	301[A]	XN5	C8-N1	5.94	1.43	1.34
2	A	301[B]	XN5	C6-C1	2.34	1.41	1.37

The worst 5 of 38 bond angle outliers are listed below:

Mol	Chain	Res	Type	Atoms	Z	Observed(°)	Ideal(°)
2	C	301[A]	XN5	C12-C8-N1	7.53	125.46	121.84
2	A	301[A]	XN5	C14-C13-N3	5.24	116.59	110.30
2	C	301[B]	XN5	C14-C13-N3	5.10	116.42	110.30
2	A	301[B]	XN5	C15-C14-C13	4.98	113.95	105.41
2	C	301[A]	XN5	C15-C14-C13	4.86	113.73	105.41

There are no chirality outliers.

All (5) torsion outliers are listed below:

Mol	Chain	Res	Type	Atoms
2	C	301[A]	XN5	C12-C8-N1-C7
2	C	301[A]	XN5	N2-C8-N1-C7
2	A	301[A]	XN5	N2-C8-N1-C7
2	A	301[A]	XN5	C12-C8-N1-C7
2	C	301[A]	XN5	C4-C7-N1-C8

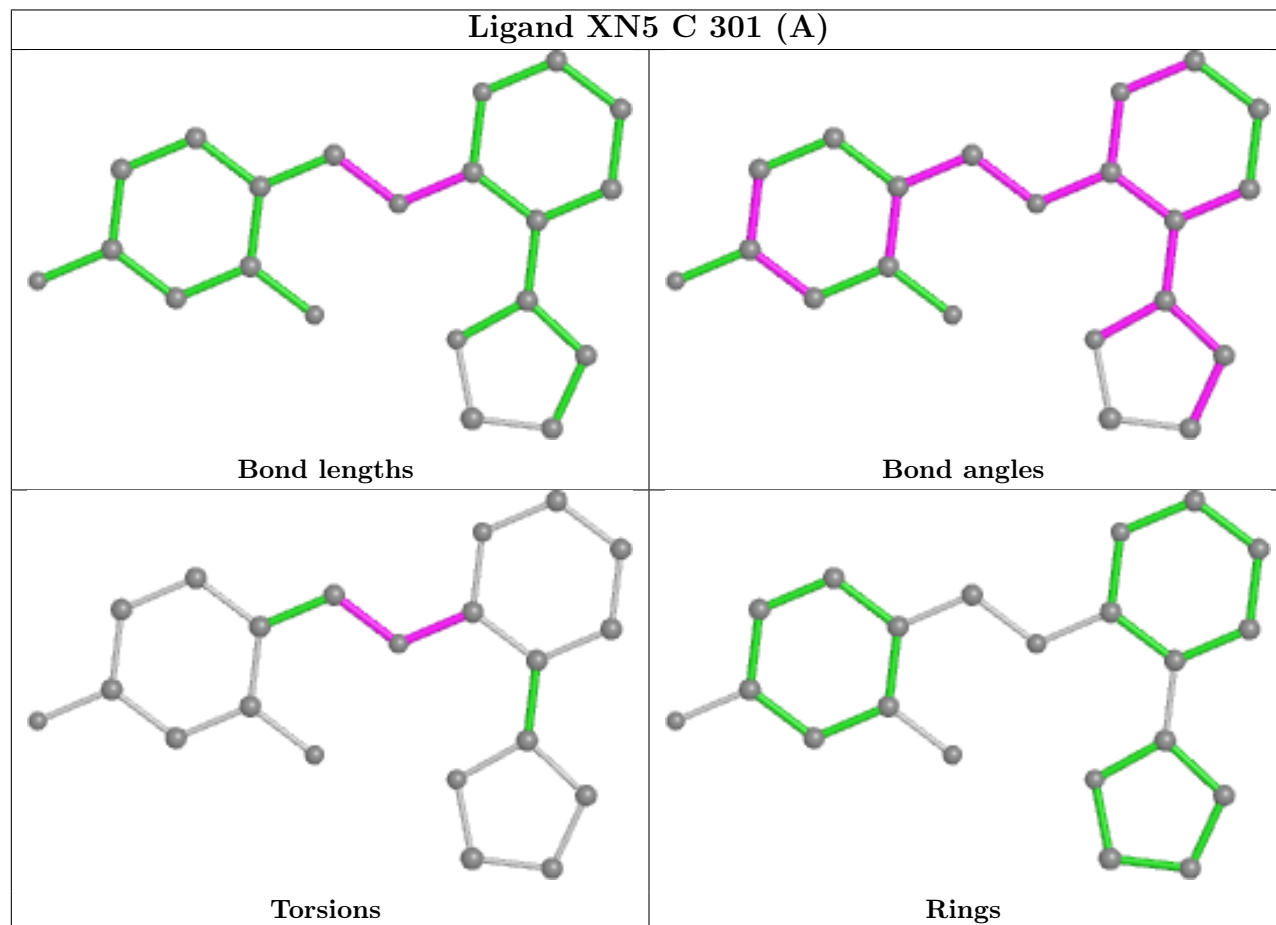
There are no ring outliers.

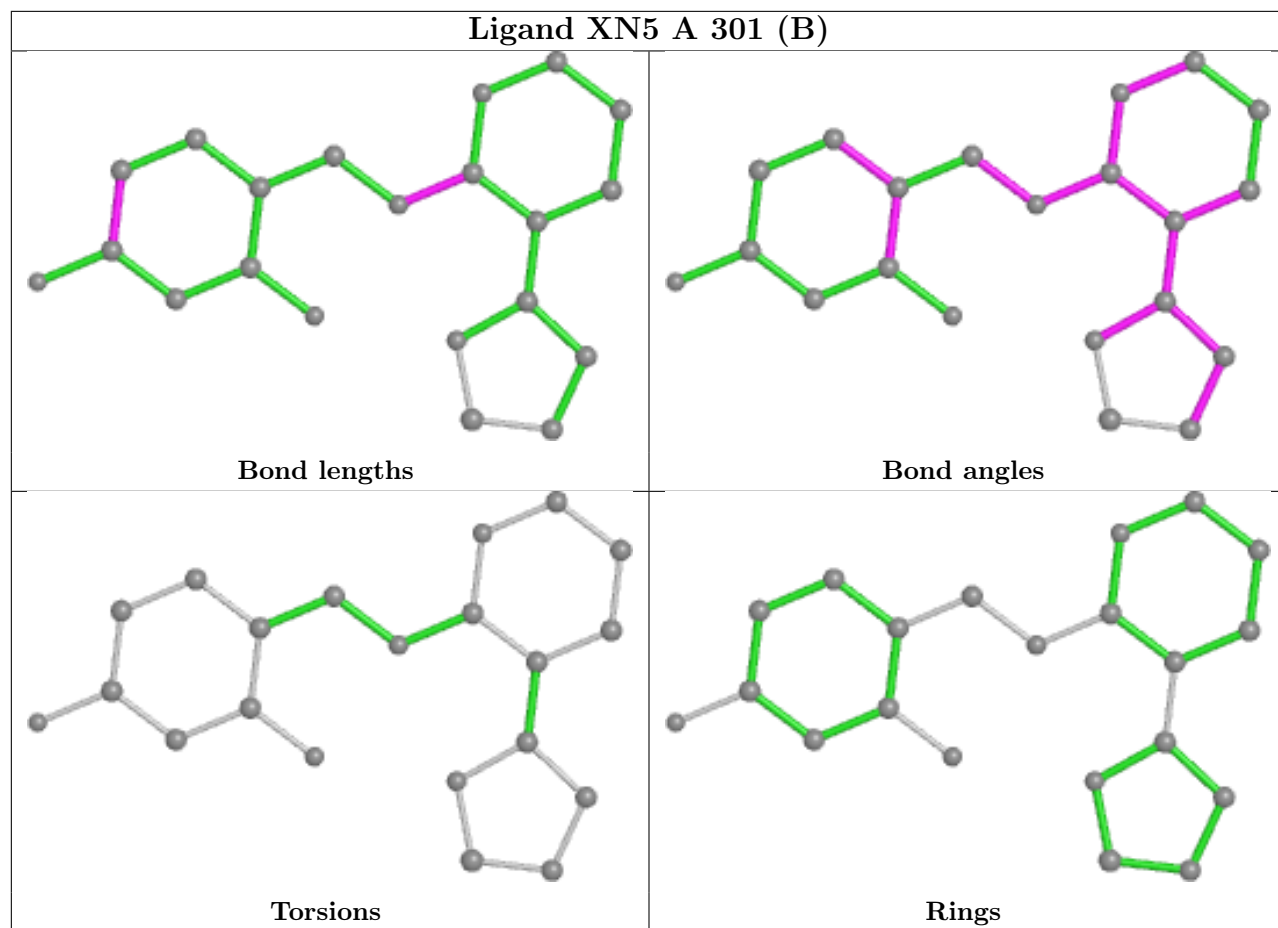
4 monomers are involved in 5 short contacts:

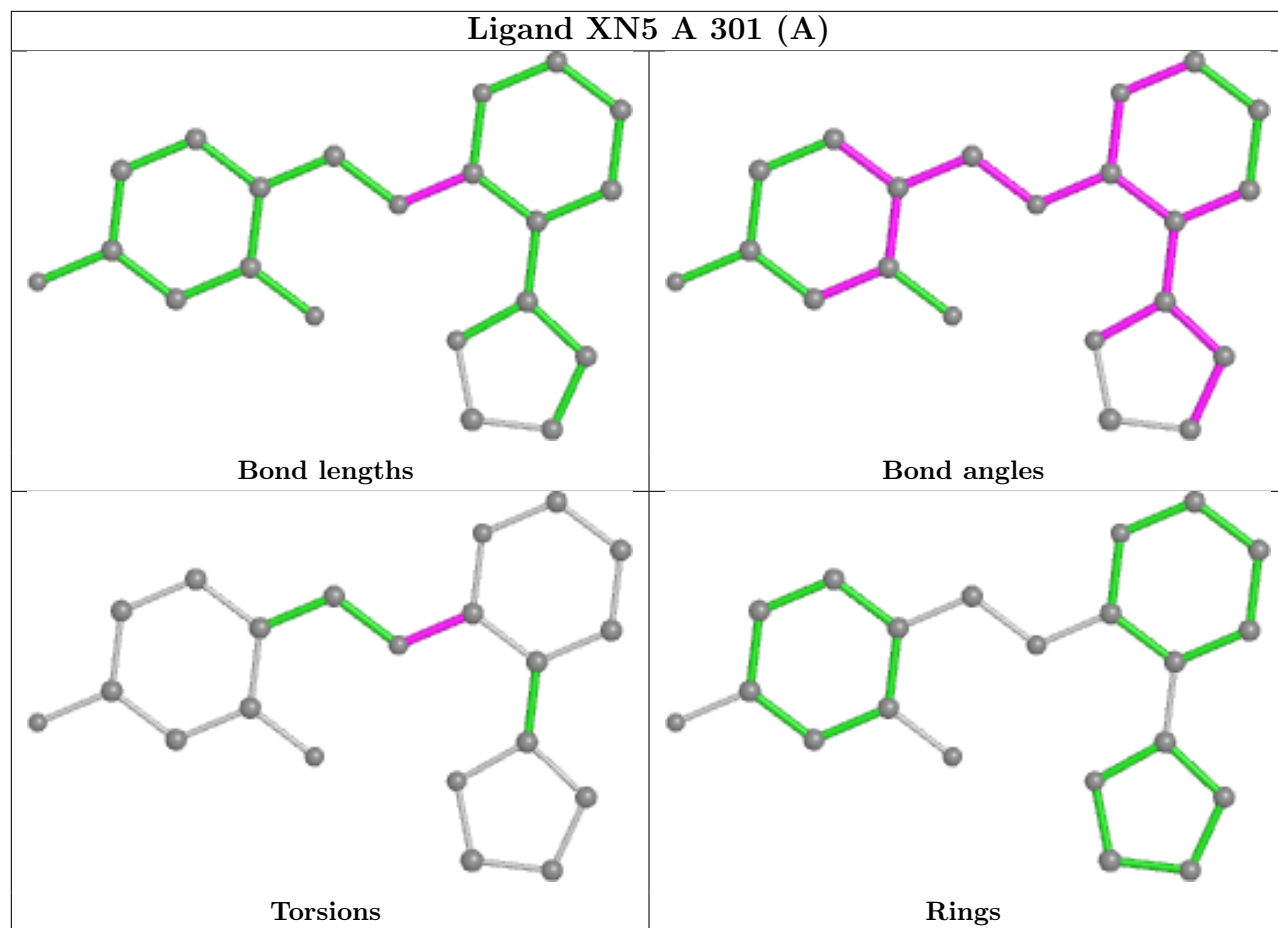
Mol	Chain	Res	Type	Clashes	Symm-Clashes
2	C	301[A]	XN5	1	0
2	A	301[B]	XN5	1	0
2	A	301[A]	XN5	1	0
2	C	301[B]	XN5	2	0

The following is a two-dimensional graphical depiction of Mogul quality analysis of bond lengths, bond angles, torsion angles, and ring geometry for all instances of the Ligand of Interest. In addition, ligands with molecular weight > 250 and outliers as shown on the validation Tables will also be included. For torsion angles, if less than 5% of the Mogul distribution of torsion angles is within 10 degrees of the torsion angle in question, then that torsion angle is considered an outlier. Any bond that is central to one or more torsion angles identified as an outlier by Mogul will be

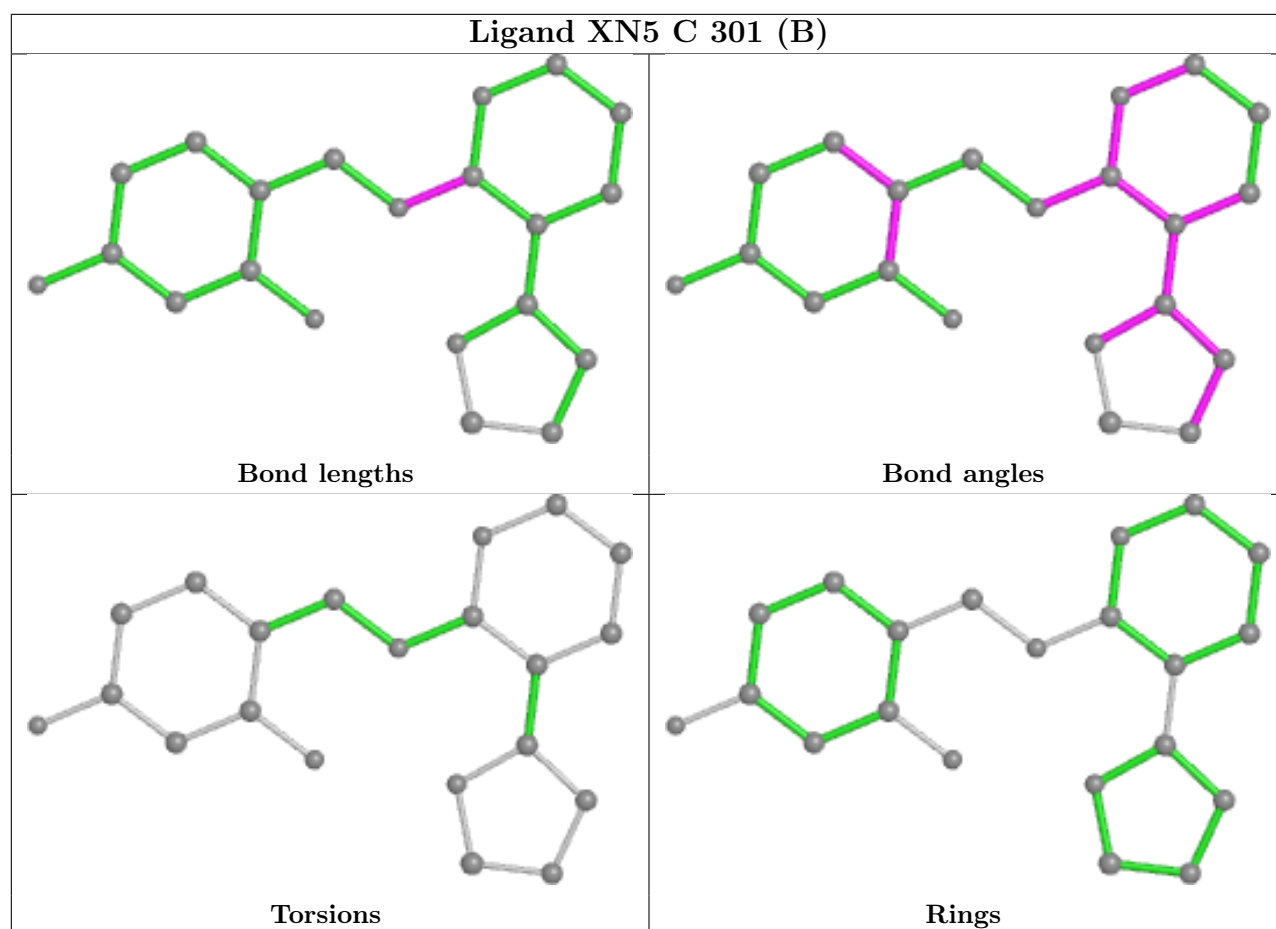
highlighted in the graph. For rings, the root-mean-square deviation (RMSD) between the ring in question and similar rings identified by Mogul is calculated over all ring torsion angles. If the average RMSD is greater than 60 degrees and the minimal RMSD between the ring in question and any Mogul-identified rings is also greater than 60 degrees, then that ring is considered an outlier. The outliers are highlighted in purple. The color gray indicates Mogul did not find sufficient equivalents in the CSD to analyse the geometry.











## 5.7 Other polymers [\(i\)](#)

There are no such residues in this entry.

## 5.8 Polymer linkage issues [\(i\)](#)

There are no chain breaks in this entry.

## 6 Fit of model and data [i](#)

### 6.1 Protein, DNA and RNA chains [i](#)

In the following table, the column labelled ‘#RSRZ > 2’ contains the number (and percentage) of RSRZ outliers, followed by percent RSRZ outliers for the chain as percentile scores relative to all X-ray entries and entries of similar resolution. The OWAB column contains the minimum, median, 95<sup>th</sup> percentile and maximum values of the occupancy-weighted average B-factor per residue. The column labelled ‘Q < 0.9’ lists the number of (and percentage) of residues with an average occupancy less than 0.9.

Mol	Chain	Analysed	<RSRZ>	#RSRZ>2	OWAB(Å <sup>2</sup> )	Q<0.9
1	A	245/299 (81%)	0.02	1 (0%) 92 93	53, 67, 109, 150	0
1	B	245/299 (81%)	0.01	1 (0%) 92 93	51, 67, 107, 142	0
1	C	251/299 (83%)	0.02	4 (1%) 72 69	53, 68, 118, 155	0
1	D	251/299 (83%)	-0.00	5 (1%) 65 60	52, 68, 115, 153	0
All	All	992/1196 (82%)	0.01	11 (1%) 80 79	51, 68, 113, 155	0

The worst 5 of 11 RSRZ outliers are listed below:

Mol	Chain	Res	Type	RSRZ
1	C	295	ASN	8.2
1	D	295	ASN	5.0
1	C	296	LEU	3.9
1	C	297	TYR	3.2
1	C	298	PHE	3.0

### 6.2 Non-standard residues in protein, DNA, RNA chains [i](#)

There are no non-standard protein/DNA/RNA residues in this entry.

### 6.3 Carbohydrates [i](#)

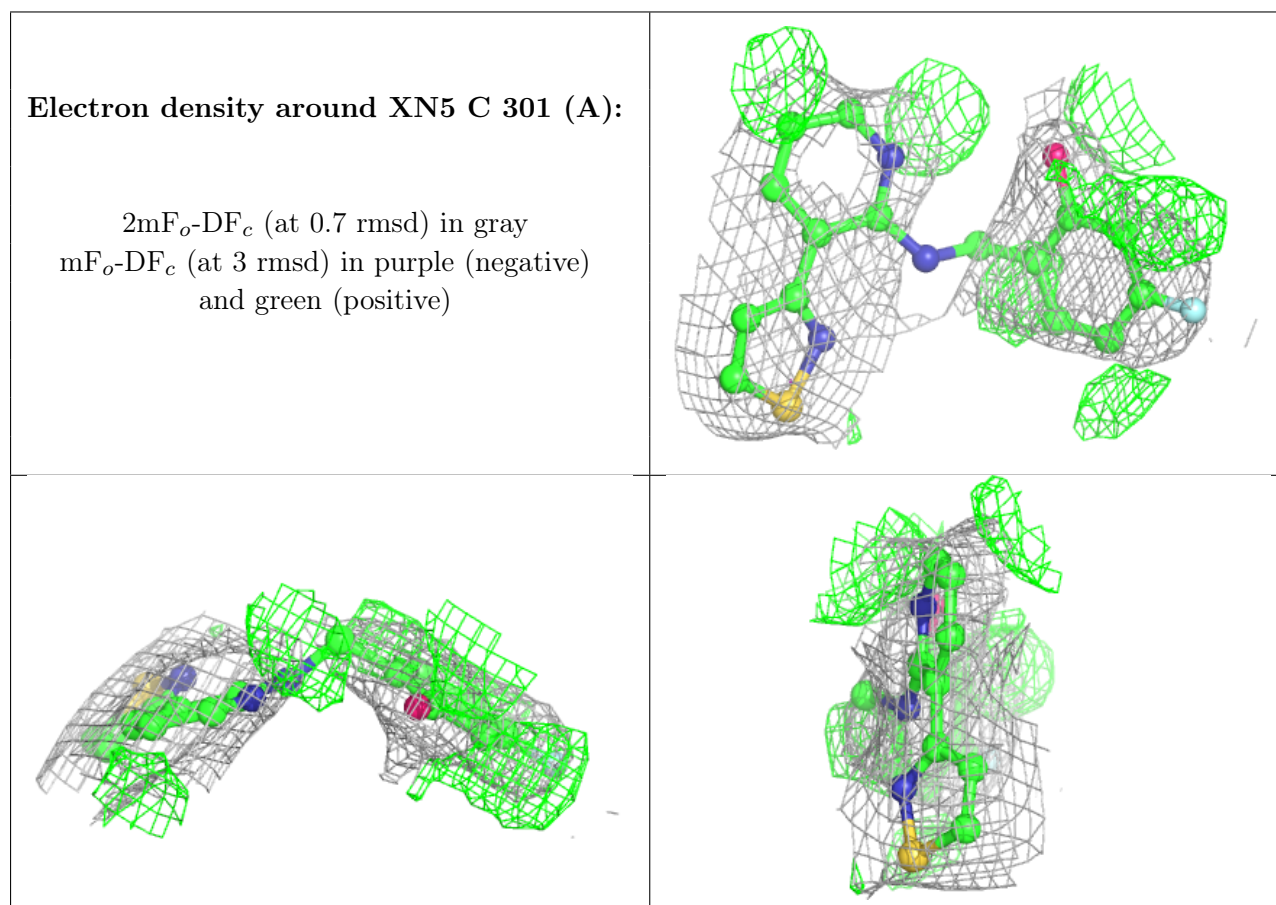
There are no monosaccharides in this entry.

### 6.4 Ligands [i](#)

In the following table, the Atoms column lists the number of modelled atoms in the group and the number defined in the chemical component dictionary. The B-factors column lists the minimum, median, 95<sup>th</sup> percentile and maximum values of B factors of atoms in the group. The column labelled ‘Q < 0.9’ lists the number of atoms with occupancy less than 0.9.

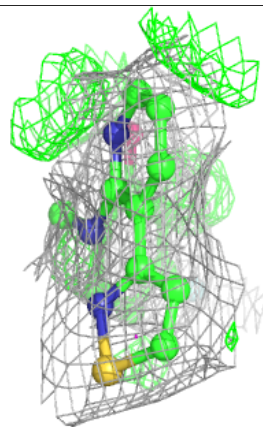
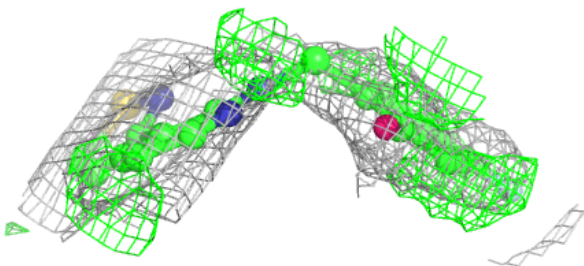
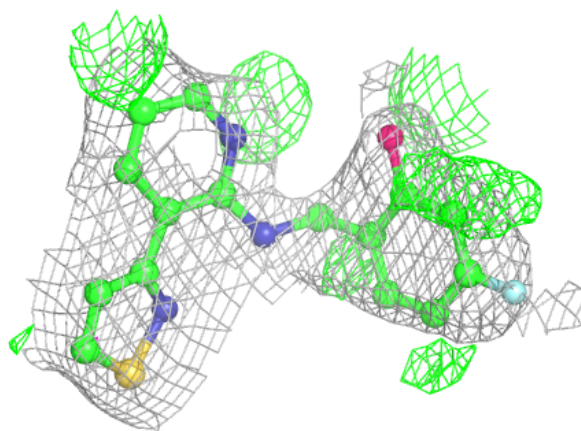
Mol	Type	Chain	Res	Atoms	RSCC	RSR	B-factors( $\text{\AA}^2$ )	Q<0.9
2	XN5	C	301[A]	21/21	0.83	0.28	47,81,115,121	21
2	XN5	C	301[B]	21/21	0.83	0.28	47,79,98,100	21
2	XN5	A	301[A]	21/21	0.87	0.24	37,52,68,71	21
2	XN5	A	301[B]	21/21	0.87	0.24	40,58,73,74	21

The following is a graphical depiction of the model fit to experimental electron density of all instances of the Ligand of Interest. In addition, ligands with molecular weight > 250 and outliers as shown on the geometry validation Tables will also be included. Each fit is shown from different orientation to approximate a three-dimensional view.



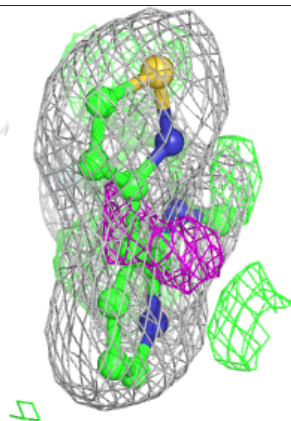
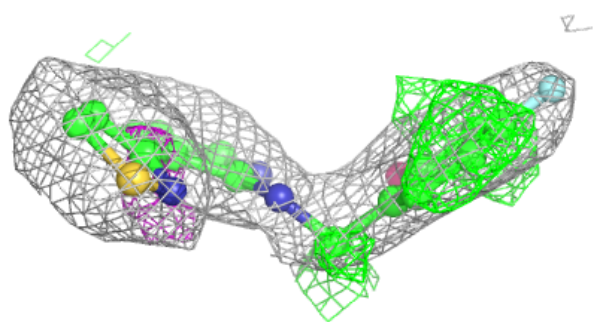
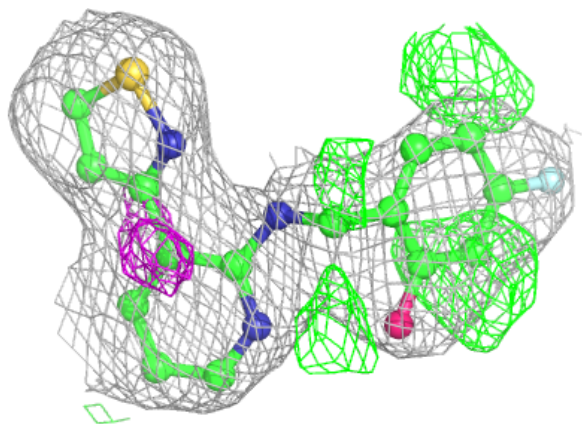
**Electron density around XN5 C 301 (B):**

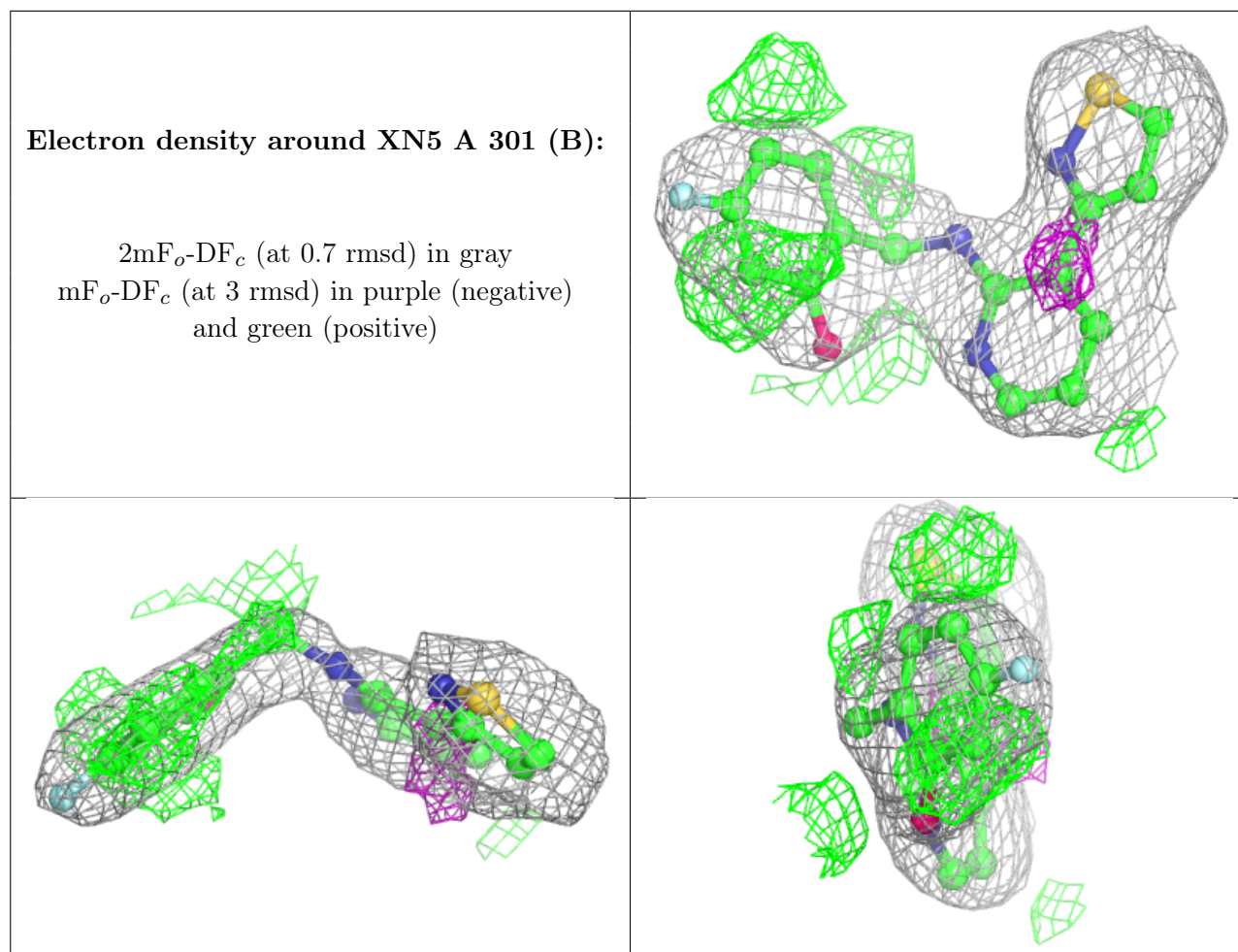
$2mF_o-DF_c$  (at 0.7 rmsd) in gray  
 $mF_o-DF_c$  (at 3 rmsd) in purple (negative)  
and green (positive)



**Electron density around XN5 A 301 (A):**

$2mF_o-DF_c$  (at 0.7 rmsd) in gray  
 $mF_o-DF_c$  (at 3 rmsd) in purple (negative)  
and green (positive)





## 6.5 Other polymers [i](#)

There are no such residues in this entry.