



## Full wwPDB EM Validation Report ⓘ

Oct 28, 2024 – 01:01 pm GMT

PDB ID : 8H3E  
EMDB ID : EMD-34465  
Title : Complex structure of a small molecule (SPC-14) bound SARS-CoV-2 spike protein, closed state  
Authors : Meng, F.; Wang, Q.; Xie, Y.; Ni, X.; Huang, N.  
Deposited on : 2022-10-08  
Resolution : 3.06 Å(reported)

This is a Full wwPDB EM Validation Report for a publicly released PDB entry.

We welcome your comments at [validation@mail.wwpdb.org](mailto:validation@mail.wwpdb.org)

A user guide is available at

<https://www.wwpdb.org/validation/2017/EMValidationReportHelp>

with specific help available everywhere you see the ⓘ symbol.

The types of validation reports are described at

<http://www.wwpdb.org/validation/2017/FAQs#types>.

---

The following versions of software and data (see [references ⓘ](#)) were used in the production of this report:

EMDB validation analysis : 0.0.1.dev113  
Mogul : 1.8.4, CSD as541be (2020)  
MolProbity : 4.02b-467  
buster-report : 1.1.7 (2018)  
Percentile statistics : 20231227.v01 (using entries in the PDB archive December 27th 2023)  
MapQ : 1.9.13  
Ideal geometry (proteins) : Engh & Huber (2001)  
Ideal geometry (DNA, RNA) : Parkinson et al. (1996)  
Validation Pipeline (wwPDB-VP) : 2.39

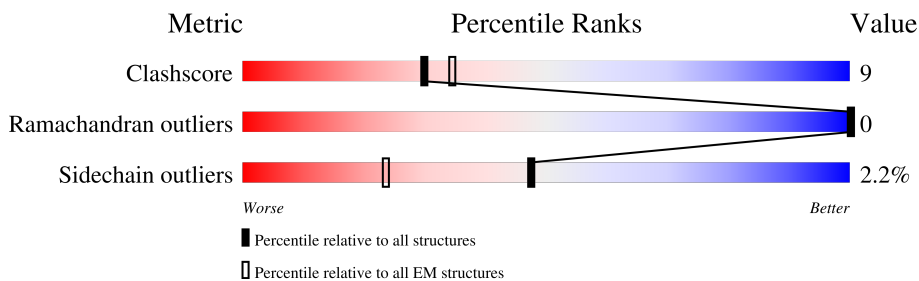
# 1 Overall quality at a glance

The following experimental techniques were used to determine the structure:

*ELECTRON MICROSCOPY*

The reported resolution of this entry is 3.06 Å.

Percentile scores (ranging between 0-100) for global validation metrics of the entry are shown in the following graphic. The table shows the number of entries on which the scores are based.



Metric	Whole archive (#Entries)	EM structures (#Entries)
Clashscore	210492	15764
Ramachandran outliers	207382	16835
Sidechain outliers	206894	16415

The table below summarises the geometric issues observed across the polymeric chains and their fit to the map. The red, orange, yellow and green segments of the bar indicate the fraction of residues that contain outliers for  $\geq 3$ , 2, 1 and 0 types of geometric quality criteria respectively. A grey segment represents the fraction of residues that are not modelled. The numeric value for each fraction is indicated below the corresponding segment, with a dot representing fractions  $\leq 5\%$ . The upper red bar (where present) indicates the fraction of residues that have poor fit to the EM map (all-atom inclusion  $< 40\%$ ). The numeric value is given above the bar.

Mol	Chain	Length	Quality of chain
1	A	1276	
1	B	1276	
1	C	1276	

## 2 Entry composition i

There are 3 unique types of molecules in this entry. The entry contains 25008 atoms, of which 51 are hydrogens and 0 are deuteriums.

In the tables below, the AltConf column contains the number of residues with at least one atom in alternate conformation and the Trace column contains the number of residues modelled with at most 2 atoms.

- Molecule 1 is a protein called Spike glycoprotein, Fibritin.

Mol	Chain	Residues	Atoms					AltConf	Trace
			Total	C	N	O	S		
1	A	1053	8227	5256	1370	1563	38	0	0
1	B	1053	8227	5256	1370	1563	38	0	0
1	C	1053	8227	5256	1370	1563	38	0	0

There are 129 discrepancies between the modelled and reference sequences:

Chain	Residue	Modelled	Actual	Comment	Reference
A	682	SER	ARG	engineered mutation	UNP P0DTC2
A	683	GLY	ARG	engineered mutation	UNP P0DTC2
A	685	GLY	ARG	engineered mutation	UNP P0DTC2
A	986	PRO	LYS	engineered mutation	UNP P0DTC2
A	987	PRO	VAL	engineered mutation	UNP P0DTC2
A	1212	SER	-	linker	UNP P0DTC2
A	1213	GLY	-	linker	UNP P0DTC2
A	1214	ARG	-	linker	UNP P0DTC2
A	1215	GLU	-	linker	UNP P0DTC2
A	1216	ASN	-	linker	UNP P0DTC2
A	1217	LEU	-	linker	UNP P0DTC2
A	1218	TYR	-	linker	UNP P0DTC2
A	1219	PHE	-	linker	UNP P0DTC2
A	1220	GLN	-	linker	UNP P0DTC2
A	1221	GLY	-	linker	UNP P0DTC2
A	1222	GLY	-	linker	UNP P0DTC2
A	1223	GLY	-	linker	UNP P0DTC2
A	1224	GLY	-	linker	UNP P0DTC2
A	1225	SER	-	linker	UNP P0DTC2
A	1247	LEU	PHE	engineered mutation	UNP P10104
A	1254	GLY	-	expression tag	UNP P10104
A	1255	GLY	-	expression tag	UNP P10104
A	1256	GLY	-	expression tag	UNP P10104
A	1257	HIS	-	expression tag	UNP P10104

*Continued on next page...*

*Continued from previous page...*

Chain	Residue	Modelled	Actual	Comment	Reference
A	1258	HIS	-	expression tag	UNP P10104
A	1259	HIS	-	expression tag	UNP P10104
A	1260	HIS	-	expression tag	UNP P10104
A	1261	HIS	-	expression tag	UNP P10104
A	1262	HIS	-	expression tag	UNP P10104
A	1263	HIS	-	expression tag	UNP P10104
A	1264	HIS	-	expression tag	UNP P10104
A	1265	GLU	-	expression tag	UNP P10104
A	1266	ASP	-	expression tag	UNP P10104
A	1267	GLN	-	expression tag	UNP P10104
A	1268	VAL	-	expression tag	UNP P10104
A	1269	ASP	-	expression tag	UNP P10104
A	1270	PRO	-	expression tag	UNP P10104
A	1271	ARG	-	expression tag	UNP P10104
A	1272	LEU	-	expression tag	UNP P10104
A	1273	ILE	-	expression tag	UNP P10104
A	1274	ASP	-	expression tag	UNP P10104
A	1275	GLY	-	expression tag	UNP P10104
A	1276	LYS	-	expression tag	UNP P10104
B	682	SER	ARG	engineered mutation	UNP P0DTC2
B	683	GLY	ARG	engineered mutation	UNP P0DTC2
B	685	GLY	ARG	engineered mutation	UNP P0DTC2
B	986	PRO	LYS	engineered mutation	UNP P0DTC2
B	987	PRO	VAL	engineered mutation	UNP P0DTC2
B	1212	SER	-	linker	UNP P0DTC2
B	1213	GLY	-	linker	UNP P0DTC2
B	1214	ARG	-	linker	UNP P0DTC2
B	1215	GLU	-	linker	UNP P0DTC2
B	1216	ASN	-	linker	UNP P0DTC2
B	1217	LEU	-	linker	UNP P0DTC2
B	1218	TYR	-	linker	UNP P0DTC2
B	1219	PHE	-	linker	UNP P0DTC2
B	1220	GLN	-	linker	UNP P0DTC2
B	1221	GLY	-	linker	UNP P0DTC2
B	1222	GLY	-	linker	UNP P0DTC2
B	1223	GLY	-	linker	UNP P0DTC2
B	1224	GLY	-	linker	UNP P0DTC2
B	1225	SER	-	linker	UNP P0DTC2
B	1247	LEU	PHE	engineered mutation	UNP P10104
B	1254	GLY	-	expression tag	UNP P10104
B	1255	GLY	-	expression tag	UNP P10104
B	1256	GLY	-	expression tag	UNP P10104

*Continued on next page...*

*Continued from previous page...*

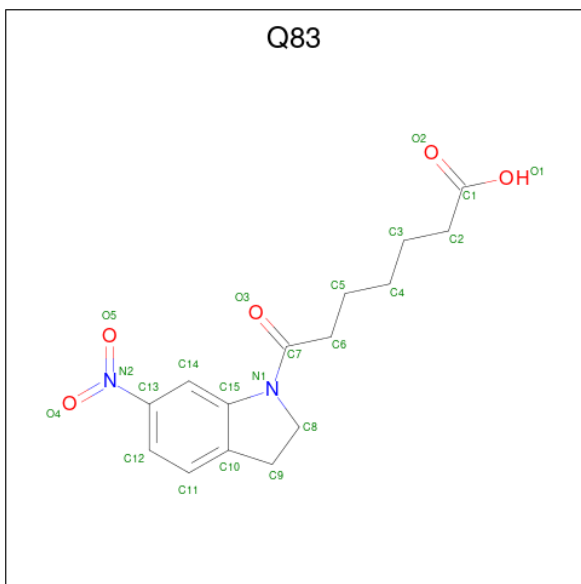
Chain	Residue	Modelled	Actual	Comment	Reference
B	1257	HIS	-	expression tag	UNP P10104
B	1258	HIS	-	expression tag	UNP P10104
B	1259	HIS	-	expression tag	UNP P10104
B	1260	HIS	-	expression tag	UNP P10104
B	1261	HIS	-	expression tag	UNP P10104
B	1262	HIS	-	expression tag	UNP P10104
B	1263	HIS	-	expression tag	UNP P10104
B	1264	HIS	-	expression tag	UNP P10104
B	1265	GLU	-	expression tag	UNP P10104
B	1266	ASP	-	expression tag	UNP P10104
B	1267	GLN	-	expression tag	UNP P10104
B	1268	VAL	-	expression tag	UNP P10104
B	1269	ASP	-	expression tag	UNP P10104
B	1270	PRO	-	expression tag	UNP P10104
B	1271	ARG	-	expression tag	UNP P10104
B	1272	LEU	-	expression tag	UNP P10104
B	1273	ILE	-	expression tag	UNP P10104
B	1274	ASP	-	expression tag	UNP P10104
B	1275	GLY	-	expression tag	UNP P10104
B	1276	LYS	-	expression tag	UNP P10104
C	682	SER	ARG	engineered mutation	UNP P0DTC2
C	683	GLY	ARG	engineered mutation	UNP P0DTC2
C	685	GLY	ARG	engineered mutation	UNP P0DTC2
C	986	PRO	LYS	engineered mutation	UNP P0DTC2
C	987	PRO	VAL	engineered mutation	UNP P0DTC2
C	1212	SER	-	linker	UNP P0DTC2
C	1213	GLY	-	linker	UNP P0DTC2
C	1214	ARG	-	linker	UNP P0DTC2
C	1215	GLU	-	linker	UNP P0DTC2
C	1216	ASN	-	linker	UNP P0DTC2
C	1217	LEU	-	linker	UNP P0DTC2
C	1218	TYR	-	linker	UNP P0DTC2
C	1219	PHE	-	linker	UNP P0DTC2
C	1220	GLN	-	linker	UNP P0DTC2
C	1221	GLY	-	linker	UNP P0DTC2
C	1222	GLY	-	linker	UNP P0DTC2
C	1223	GLY	-	linker	UNP P0DTC2
C	1224	GLY	-	linker	UNP P0DTC2
C	1225	SER	-	linker	UNP P0DTC2
C	1247	LEU	PHE	engineered mutation	UNP P10104
C	1254	GLY	-	expression tag	UNP P10104
C	1255	GLY	-	expression tag	UNP P10104

*Continued on next page...*

Continued from previous page...

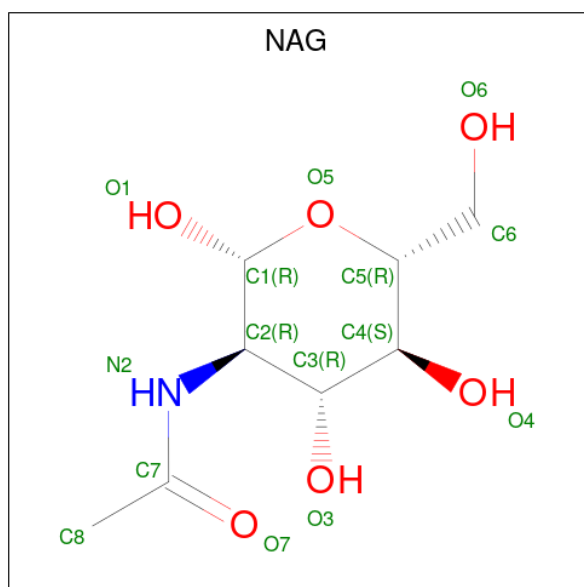
Chain	Residue	Modelled	Actual	Comment	Reference
C	1256	GLY	-	expression tag	UNP P10104
C	1257	HIS	-	expression tag	UNP P10104
C	1258	HIS	-	expression tag	UNP P10104
C	1259	HIS	-	expression tag	UNP P10104
C	1260	HIS	-	expression tag	UNP P10104
C	1261	HIS	-	expression tag	UNP P10104
C	1262	HIS	-	expression tag	UNP P10104
C	1263	HIS	-	expression tag	UNP P10104
C	1264	HIS	-	expression tag	UNP P10104
C	1265	GLU	-	expression tag	UNP P10104
C	1266	ASP	-	expression tag	UNP P10104
C	1267	GLN	-	expression tag	UNP P10104
C	1268	VAL	-	expression tag	UNP P10104
C	1269	ASP	-	expression tag	UNP P10104
C	1270	PRO	-	expression tag	UNP P10104
C	1271	ARG	-	expression tag	UNP P10104
C	1272	LEU	-	expression tag	UNP P10104
C	1273	ILE	-	expression tag	UNP P10104
C	1274	ASP	-	expression tag	UNP P10104
C	1275	GLY	-	expression tag	UNP P10104
C	1276	LYS	-	expression tag	UNP P10104

- Molecule 2 is 7-(6-nitro-2,3-dihydroindol-1-yl)-7-oxidanylidene-heptanoic acid (three-letter code: Q83) (formula: C<sub>15</sub>H<sub>18</sub>N<sub>2</sub>O<sub>5</sub>) (labeled as "Ligand of Interest" by depositor).



Mol	Chain	Residues	Atoms					AltConf
2	A	1	Total	C	H	N	O	0
			39	15	17	2	5	
2	B	1	Total	C	H	N	O	0
			39	15	17	2	5	
2	C	1	Total	C	H	N	O	0
			39	15	17	2	5	

- Molecule 3 is 2-acetamido-2-deoxy-beta-D-glucopyranose (three-letter code: NAG) (formula:  $C_8H_{15}NO_6$ ) (labeled as "Ligand of Interest" by depositor).



Mol	Chain	Residues	Atoms				AltConf
3	A	1	Total	C	N	O	0
			14	8	1	5	
3	A	1	Total	C	N	O	0
			14	8	1	5	
3	A	1	Total	C	N	O	0
			14	8	1	5	
3	A	1	Total	C	N	O	0
			14	8	1	5	
3	A	1	Total	C	N	O	0
			14	8	1	5	
3	B	1	Total	C	N	O	0
			14	8	1	5	
3	B	1	Total	C	N	O	0
			14	8	1	5	
3	B	1	Total	C	N	O	0
			14	8	1	5	

*Continued on next page...*

*Continued from previous page...*

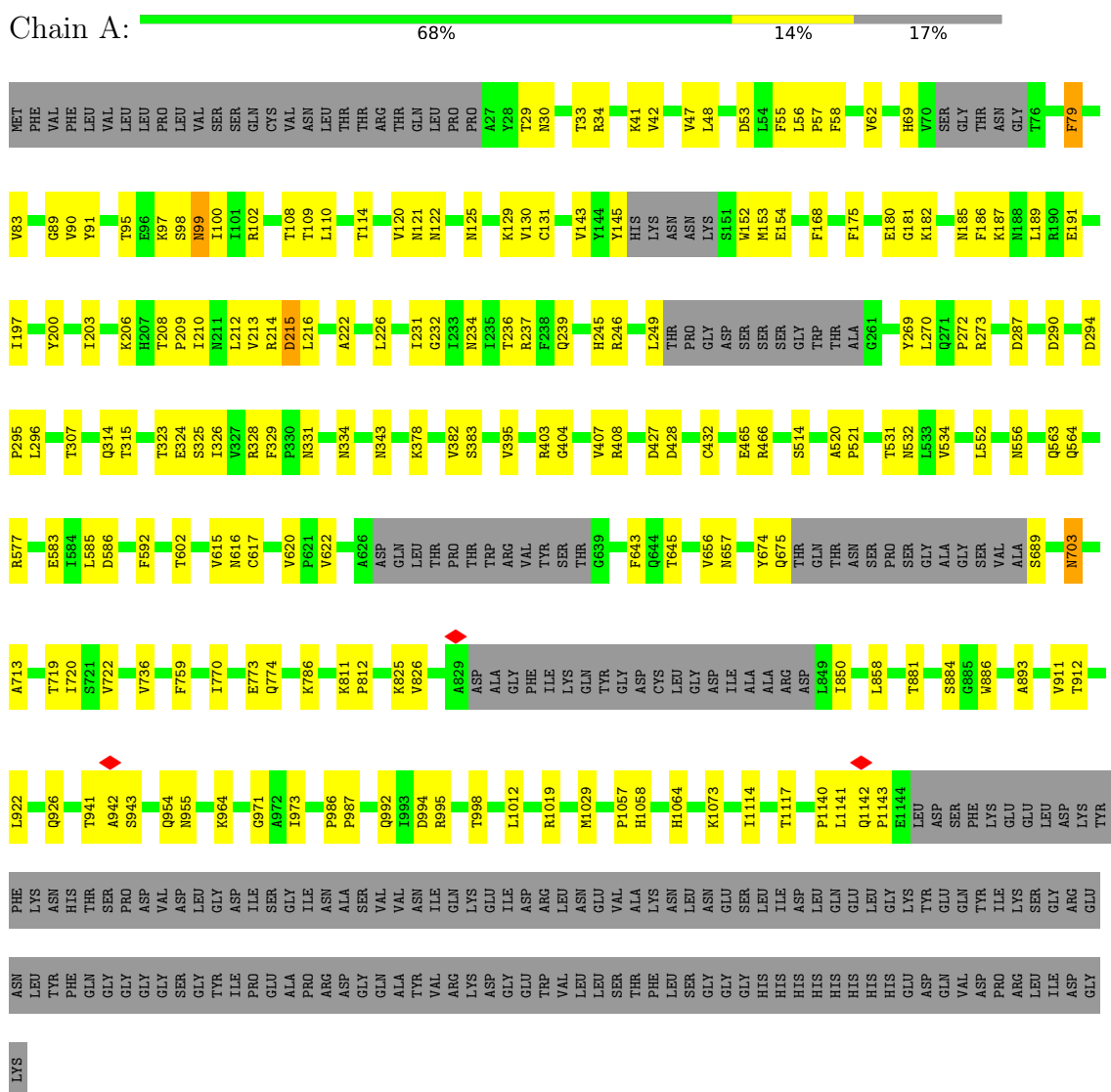
Mol	Chain	Residues	Atoms				AltConf
			Total	C	N	O	
3	B	1	Total 14	8	1	5	0
3	B	1	Total 14	8	1	5	0
3	C	1	Total 14	8	1	5	0
3	C	1	Total 14	8	1	5	0
3	C	1	Total 14	8	1	5	0
3	C	1	Total 14	8	1	5	0
3	C	1	Total 14	8	1	5	0



### 3 Residue-property plots

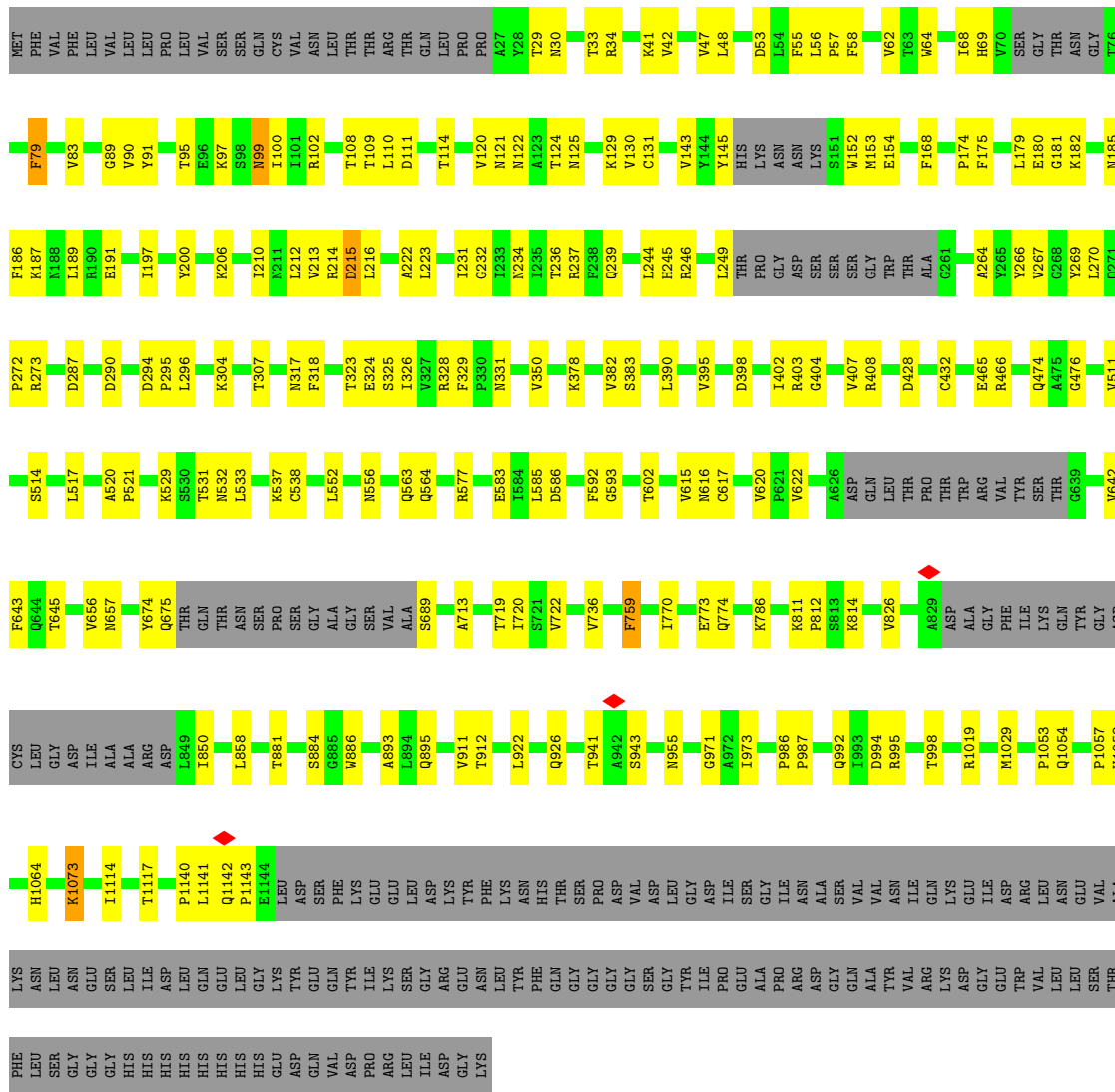
These plots are drawn for all protein, RNA, DNA and oligosaccharide chains in the entry. The first graphic for a chain summarises the proportions of the various outlier classes displayed in the second graphic. The second graphic shows the sequence view annotated by issues in geometry and atom inclusion in map density. Residues are color-coded according to the number of geometric quality criteria for which they contain at least one outlier: green = 0, yellow = 1, orange = 2 and red = 3 or more. A red diamond above a residue indicates a poor fit to the EM map for this residue (all-atom inclusion < 40%). Stretches of 2 or more consecutive residues without any outlier are shown as a green connector. Residues present in the sample, but not in the model, are shown in grey.

- Molecule 1: Spike glycoprotein,Fibrinin

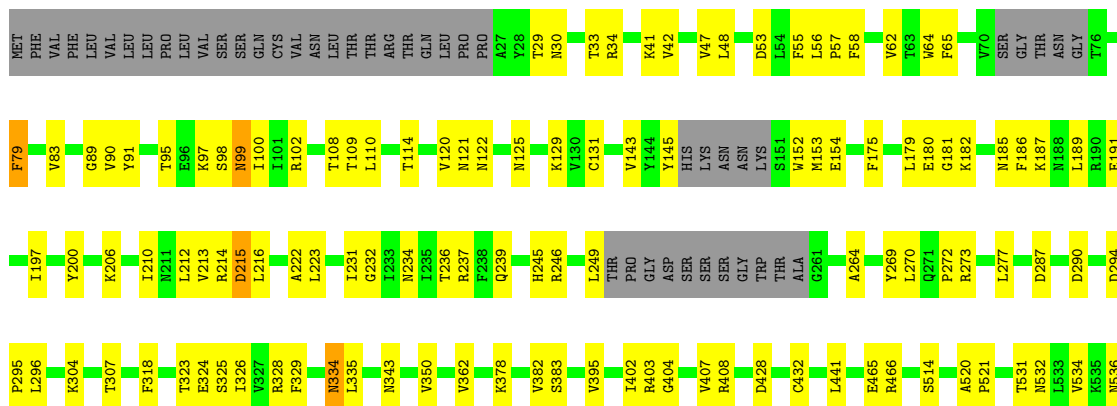


- Molecule 1: Spike glycoprotein,Fibrinin





● Molecule 1: Spike glycoprotein, Fibrin



K537	C536	V539	N542	L546	L552	T553	E554	S555	N556	Q563	Q564	F565	G566	R567	D568	R577	E583	I584	L585	D586	F592	T602	V615	N616	C617	V620	P621	V622	A626	ASP	GLN	LEU	THR	PRO	THR	TRP	ARG	VAL	TYR	THR	G639	V642	F643	Q644	T645					
V656	M657	Y674	THR	GLN	THR	ASN	SER	PRO	SER	GLY	ALA	GLY	VAL	ALA	S689	A713	T719	I720	S721	V722	M731	T732	V736	F759	L767	I770	E773	Q774	K786	K811	P812	V826	A829	ASP	ALA	GLY	PHE	ILE	LYS	GLN	TYR	GLY	ASP	CYS						
LEU	GLY	ASP	ILE	ALA	ARG	ASP	L849	I850	K854	L858	T881	S884	G885	W886	A893	L894	Q895	V911	T912	L922	Q926	T941	A942	S943	Q954	N955	A956	G971	A972	I973	P986	P987	Q992	I993	D994	R995	T998	L1012	R1019	M1029										
P1063	Q1064	P1057	H1058	H1064	K1073	I1114	V1133	N1134	Y1138	D1139	P1140	L1141	Q1142	P1143	E1144	LEU	ASP	SER	PHE	GLU	LYS	LEU	ASP	LYS	THR	ASN	HIS	THR	SER	PRO	ASP	VAL	GLY	LEU	ASP	ILE	SER	GLY	ILE	ASN	ALA	SER	VAL	VAL	ASN	ILE	GLN	LYS	GLU	
ILE	ASP	ARG	LEU	GLU	VAL	ALA	LYS	ASN	LEU	ASN	GLU	GLU	LEU	LEU	GLY	LYS	TYR	GLN	GLU	TYR	ILE	LEU	ARG	GLY	PHE	GLN	GLY	GLY	GLY	GLY	SER	TYR	ILE	PRO	GLU	ALA	PRO	ARG	ASP	GLY	GLN	ALA	TYR	VAL	ARG	LYS	ASP			
GLY	GLU	TRP	VAL	LEU	LEU	SER	THR	PHE	LEU	SER	GLY	GLY	GLY	HIS	HIS	HIS	HIS	HIS	HIS	HIS	HIS	HIS	HIS	HIS	HIS	HIS	HIS	HIS	HIS	HIS	HIS	HIS	HIS	HIS	HIS	HIS	HIS	HIS	HIS	HIS	HIS	HIS	HIS	HIS	HIS	HIS	HIS	HIS	HIS	HIS

## 4 Experimental information

Property	Value	Source
EM reconstruction method	SINGLE PARTICLE	Depositor
Imposed symmetry	POINT, Not provided	
Number of particles used	59187	Depositor
Resolution determination method	FSC 0.143 CUT-OFF	Depositor
CTF correction method	PHASE FLIPPING AND AMPLITUDE CORRECTION	Depositor
Microscope	FEI TITAN KRIOS	Depositor
Voltage (kV)	300	Depositor
Electron dose ( $e^-/\text{\AA}^2$ )	50	Depositor
Minimum defocus (nm)	1000	Depositor
Maximum defocus (nm)	2000	Depositor
Magnification	96000	Depositor
Image detector	FEI FALCON IV (4k x 4k)	Depositor
Maximum map value	4.989	Depositor
Minimum map value	-2.805	Depositor
Average map value	-0.002	Depositor
Map value standard deviation	0.122	Depositor
Recommended contour level	0.6	Depositor
Map size (Å)	412.80002, 412.80002, 412.80002	wwPDB
Map dimensions	480, 480, 480	wwPDB
Map angles (°)	90.0, 90.0, 90.0	wwPDB
Pixel spacing (Å)	0.86, 0.86, 0.86	Depositor

## 5 Model quality [i](#)

### 5.1 Standard geometry [i](#)

Bond lengths and bond angles in the following residue types are not validated in this section: Q83, NAG

The Z score for a bond length (or angle) is the number of standard deviations the observed value is removed from the expected value. A bond length (or angle) with  $|Z| > 5$  is considered an outlier worth inspection. RMSZ is the root-mean-square of all Z scores of the bond lengths (or angles).

Mol	Chain	Bond lengths		Bond angles	
		RMSZ	# Z  >5	RMSZ	# Z  >5
1	A	0.25	0/8416	0.48	0/11449
1	B	0.25	0/8416	0.48	0/11449
1	C	0.25	0/8416	0.48	0/11449
All	All	0.25	0/25248	0.48	0/34347

There are no bond length outliers.

There are no bond angle outliers.

There are no chirality outliers.

There are no planarity outliers.

### 5.2 Too-close contacts [i](#)

In the following table, the Non-H and H(model) columns list the number of non-hydrogen atoms and hydrogen atoms in the chain respectively. The H(added) column lists the number of hydrogen atoms added and optimized by MolProbity. The Clashes column lists the number of clashes within the asymmetric unit, whereas Symm-Clashes lists symmetry-related clashes.

Mol	Chain	Non-H	H(model)	H(added)	Clashes	Symm-Clashes
1	A	8227	0	8024	129	0
1	B	8227	0	8024	146	0
1	C	8227	0	8024	151	0
2	A	22	17	0	0	0
2	B	22	17	0	0	0
2	C	22	17	0	0	0
3	A	70	0	65	4	0
3	B	70	0	65	4	0
3	C	70	0	65	3	0
All	All	24957	51	24267	432	0

The all-atom clashscore is defined as the number of clashes found per 1000 atoms (including hydrogen atoms). The all-atom clashscore for this structure is 9.

All (432) close contacts within the same asymmetric unit are listed below, sorted by their clash magnitude.

Atom-1	Atom-2	Interatomic distance (Å)	Clash overlap (Å)
1:B:973:ILE:HG23	1:B:992:GLN:HE22	1.40	0.84
1:A:180:GLU:HG3	1:A:181:GLY:H	1.43	0.84
1:A:617:CYS:HA	1:A:620:VAL:HG23	1.59	0.84
1:C:180:GLU:HG3	1:C:181:GLY:H	1.43	0.84
1:C:617:CYS:HA	1:C:620:VAL:HG23	1.60	0.84
1:B:617:CYS:HA	1:B:620:VAL:HG23	1.61	0.83
1:B:91:TYR:OH	1:B:191:GLU:OE1	1.96	0.83
1:C:323:THR:OG1	1:C:324:GLU:OE1	1.97	0.82
1:A:91:TYR:OH	1:A:191:GLU:OE1	1.97	0.82
1:A:973:ILE:HG12	1:A:992:GLN:HE22	1.43	0.82
1:B:212:LEU:HD21	1:B:215:ASP:H	1.45	0.82
1:C:91:TYR:OH	1:C:191:GLU:OE1	1.96	0.82
1:B:180:GLU:HG3	1:B:181:GLY:H	1.46	0.81
1:C:212:LEU:HD21	1:C:215:ASP:H	1.45	0.81
1:A:212:LEU:HD21	1:A:215:ASP:H	1.46	0.80
1:B:403:ARG:HG2	1:B:404:GLY:H	1.47	0.79
1:C:403:ARG:HG2	1:C:404:GLY:H	1.45	0.79
1:A:403:ARG:HG2	1:A:404:GLY:H	1.46	0.79
1:C:994:ASP:O	1:C:998:THR:HG23	1.83	0.78
1:A:323:THR:OG1	1:A:324:GLU:OE1	2.01	0.78
1:B:323:THR:OG1	1:B:324:GLU:OE1	2.02	0.77
1:A:994:ASP:O	1:A:998:THR:HG23	1.85	0.76
1:B:994:ASP:O	1:B:998:THR:HG23	1.86	0.75
1:A:811:LYS:HD2	1:A:812:PRO:HD2	1.70	0.74
1:A:314:GLN:O	1:A:315:THR:OG1	2.06	0.73
1:A:531:THR:HG22	1:A:532:ASN:H	1.53	0.73
1:B:563:GLN:O	1:B:577:ARG:NH2	2.22	0.72
1:B:212:LEU:HG	1:B:213:VAL:H	1.54	0.72
1:B:1117:THR:HG22	1:B:1140:PRO:HD3	1.71	0.72
1:A:212:LEU:HG	1:A:213:VAL:H	1.55	0.72
1:C:212:LEU:HG	1:C:213:VAL:H	1.55	0.72
1:C:770:ILE:O	1:C:774:GLN:HG2	1.90	0.72
1:A:563:GLN:O	1:A:577:ARG:NH2	2.23	0.71
1:A:770:ILE:O	1:A:774:GLN:HG2	1.89	0.71
1:C:563:GLN:O	1:C:577:ARG:NH2	2.23	0.71
1:B:811:LYS:HD2	1:B:812:PRO:HD2	1.71	0.71
1:C:811:LYS:HD2	1:C:812:PRO:HD2	1.71	0.71

*Continued on next page...*

*Continued from previous page...*

Atom-1	Atom-2	Interatomic distance (Å)	Clash overlap (Å)
1:B:770:ILE:O	1:B:774:GLN:HG2	1.91	0.71
1:C:326:ILE:HD11	1:C:534:VAL:HG12	1.71	0.71
1:A:1117:THR:HG22	1:A:1140:PRO:HD3	1.72	0.70
1:B:531:THR:HG22	1:B:532:ASN:H	1.55	0.69
1:A:973:ILE:HG12	1:A:992:GLN:NE2	2.08	0.67
1:B:95:THR:HG22	1:B:186:PHE:HB3	1.77	0.66
1:C:615:VAL:CG1	1:C:620:VAL:HG22	2.26	0.66
1:C:656:VAL:HG22	1:C:657:ASN:H	1.61	0.66
1:A:615:VAL:CG1	1:A:620:VAL:HG22	2.25	0.65
1:A:615:VAL:HG12	1:A:620:VAL:HG22	1.79	0.65
1:A:1029:MET:O	1:A:1029:MET:HG3	1.96	0.65
1:B:615:VAL:CG1	1:B:620:VAL:HG22	2.27	0.65
1:C:617:CYS:HA	1:C:620:VAL:CG2	2.26	0.65
1:C:1029:MET:HG3	1:C:1029:MET:O	1.95	0.65
1:A:95:THR:HG22	1:A:186:PHE:HB3	1.77	0.65
1:A:736:VAL:HG23	1:A:858:LEU:HD23	1.79	0.65
1:C:615:VAL:HG12	1:C:620:VAL:HG22	1.79	0.64
1:A:617:CYS:HA	1:A:620:VAL:CG2	2.26	0.64
1:B:615:VAL:HG12	1:B:620:VAL:HG22	1.79	0.64
1:B:617:CYS:HA	1:B:620:VAL:CG2	2.26	0.64
1:B:1029:MET:O	1:B:1029:MET:HG3	1.96	0.64
1:C:1140:PRO:O	1:C:1141:LEU:HD22	1.99	0.64
1:B:973:ILE:HG23	1:B:992:GLN:NE2	2.11	0.63
1:C:326:ILE:CD1	1:C:534:VAL:HG12	2.28	0.63
1:A:1140:PRO:O	1:A:1141:LEU:HD22	1.99	0.62
1:C:95:THR:HG22	1:C:186:PHE:HB3	1.81	0.62
3:C:1303:NAG:O7	3:C:1303:NAG:O3	2.16	0.62
1:C:79:PHE:HB2	1:C:249:LEU:O	1.99	0.61
1:B:79:PHE:HB2	1:B:249:LEU:O	2.00	0.61
1:C:56:LEU:HD12	1:C:57:PRO:HD2	1.82	0.61
1:A:98:SER:O	1:A:100:ILE:HG12	2.00	0.61
1:B:1140:PRO:O	1:B:1141:LEU:HD22	1.99	0.61
1:B:56:LEU:HD12	1:B:57:PRO:HD2	1.82	0.61
1:B:656:VAL:HG22	1:B:657:ASN:H	1.66	0.61
1:A:79:PHE:HB2	1:A:249:LEU:O	2.01	0.60
3:A:1303:NAG:O7	3:A:1303:NAG:O3	2.18	0.60
1:B:99:ASN:O	1:B:100:ILE:HD13	2.02	0.60
1:A:713:ALA:HA	1:A:1073:LYS:O	2.02	0.60
1:C:973:ILE:HG12	1:C:992:GLN:OE1	2.01	0.60
1:A:180:GLU:HA	1:A:180:GLU:OE1	2.02	0.59
1:A:656:VAL:HG22	1:A:657:ASN:H	1.66	0.59

*Continued on next page...*

*Continued from previous page...*

Atom-1	Atom-2	Interatomic distance (Å)	Clash overlap (Å)
1:A:56:LEU:HD12	1:A:57:PRO:HD2	1.85	0.59
1:C:294:ASP:HB2	1:C:295:PRO:HD2	1.85	0.59
1:C:334:ASN:O	1:C:362:VAL:HG12	2.02	0.59
1:A:99:ASN:O	1:A:100:ILE:HD13	2.03	0.59
1:C:736:VAL:HG23	1:C:858:LEU:HD23	1.85	0.59
1:A:294:ASP:HB2	1:A:295:PRO:HD2	1.85	0.59
1:B:216:LEU:HD23	1:B:216:LEU:H	1.69	0.58
1:C:216:LEU:HD23	1:C:216:LEU:H	1.68	0.58
1:A:212:LEU:HD21	1:A:215:ASP:N	2.17	0.58
1:A:130:VAL:HG12	1:A:130:VAL:O	2.03	0.58
1:B:736:VAL:HG23	1:B:858:LEU:HD23	1.86	0.58
1:B:826:VAL:CG1	1:B:1057:PRO:HG2	2.34	0.58
3:B:1303:NAG:O7	3:B:1303:NAG:O3	2.17	0.58
1:C:713:ALA:HA	1:C:1073:LYS:O	2.03	0.58
1:C:99:ASN:O	1:C:100:ILE:HD13	2.03	0.58
1:B:212:LEU:HD21	1:B:215:ASP:N	2.16	0.58
1:B:971:GLY:O	1:B:995:ARG:NE	2.37	0.58
1:C:143:VAL:HG12	1:C:153:MET:O	2.04	0.58
1:C:350:VAL:CG2	1:C:402:ILE:HG22	2.33	0.57
1:A:216:LEU:HD23	1:A:216:LEU:H	1.68	0.57
1:B:786:LYS:HD3	1:B:786:LYS:N	2.19	0.57
1:B:294:ASP:HB2	1:B:295:PRO:HD2	1.86	0.57
1:B:350:VAL:CG2	1:B:402:ILE:HG22	2.34	0.57
1:A:773:GLU:OE2	1:A:1019:ARG:NH1	2.38	0.57
1:B:713:ALA:HA	1:B:1073:LYS:O	2.04	0.57
1:A:58:PHE:CD2	1:A:290:ASP:HB2	2.40	0.57
1:A:786:LYS:N	1:A:786:LYS:HD3	2.18	0.57
1:C:318:PHE:CE2	1:C:622:VAL:HB	2.40	0.57
1:A:826:VAL:CG1	1:A:1057:PRO:HG2	2.36	0.56
1:C:786:LYS:HD3	1:C:786:LYS:N	2.18	0.56
1:A:826:VAL:HG11	1:A:1057:PRO:HG2	1.88	0.56
1:A:736:VAL:HG23	1:A:858:LEU:CD2	2.36	0.56
1:B:58:PHE:CD2	1:B:290:ASP:HB2	2.40	0.56
1:C:350:VAL:HG21	1:C:402:ILE:HG22	1.86	0.56
1:B:826:VAL:HG11	1:B:1057:PRO:HG2	1.88	0.55
1:C:58:PHE:CD2	1:C:290:ASP:HB2	2.42	0.55
1:C:212:LEU:HD21	1:C:215:ASP:N	2.18	0.55
1:A:296:LEU:O	1:A:296:LEU:HD12	2.07	0.55
1:C:180:GLU:HA	1:C:180:GLU:OE1	2.06	0.55
1:C:826:VAL:CG1	1:C:1057:PRO:HG2	2.36	0.55
1:A:83:VAL:HG22	1:A:239:GLN:OE1	2.07	0.55

*Continued on next page...*



*Continued from previous page...*

Atom-1	Atom-2	Interatomic distance (Å)	Clash overlap (Å)
1:A:325:SER:O	1:A:326:ILE:HG13	2.07	0.55
1:C:98:SER:O	1:C:100:ILE:HG12	2.07	0.55
1:C:773:GLU:OE2	1:C:1019:ARG:NH1	2.39	0.55
1:B:296:LEU:HD12	1:B:296:LEU:O	2.07	0.55
1:C:736:VAL:HG23	1:C:858:LEU:CD2	2.37	0.55
1:C:83:VAL:HG22	1:C:239:GLN:OE1	2.07	0.54
1:A:185:ASN:HB2	1:A:212:LEU:O	2.07	0.54
1:B:318:PHE:CE2	1:B:622:VAL:HB	2.42	0.54
1:C:296:LEU:HD12	1:C:296:LEU:O	2.08	0.54
1:C:325:SER:O	1:C:326:ILE:HG13	2.07	0.54
1:C:971:GLY:O	1:C:995:ARG:NE	2.40	0.54
1:B:773:GLU:OE2	1:B:1019:ARG:NH1	2.41	0.54
1:C:403:ARG:HG2	1:C:404:GLY:N	2.21	0.54
1:A:89:GLY:O	1:A:90:VAL:HG23	2.08	0.54
1:A:564:GLN:HG3	1:A:564:GLN:O	2.08	0.54
1:C:89:GLY:O	1:C:90:VAL:HG23	2.08	0.54
1:B:231:ILE:HG13	1:B:232:GLY:H	1.74	0.53
1:C:531:THR:HG22	1:C:532:ASN:N	2.23	0.53
1:A:689:SER:O	1:A:689:SER:OG	2.27	0.53
1:C:520:ALA:HB1	1:C:521:PRO:HD2	1.91	0.53
1:C:826:VAL:HG11	1:C:1057:PRO:HG2	1.89	0.53
1:A:180:GLU:CG	1:A:181:GLY:H	2.18	0.53
1:B:269:TYR:O	1:B:270:LEU:HD23	2.09	0.53
1:B:350:VAL:HG21	1:B:402:ILE:HG22	1.90	0.53
1:C:180:GLU:CG	1:C:181:GLY:H	2.19	0.53
1:B:520:ALA:HB1	1:B:521:PRO:HD2	1.90	0.52
1:C:531:THR:CG2	1:C:532:ASN:N	2.72	0.52
1:C:564:GLN:O	1:C:564:GLN:HG3	2.07	0.52
1:A:520:ALA:HB1	1:A:521:PRO:HD2	1.90	0.52
1:B:850:ILE:HG12	1:B:850:ILE:O	2.09	0.52
1:A:884:SER:OG	1:A:893:ALA:HB1	2.09	0.52
1:B:83:VAL:HG22	1:B:239:GLN:OE1	2.10	0.52
1:B:564:GLN:O	1:B:564:GLN:HG3	2.08	0.52
1:C:269:TYR:O	1:C:270:LEU:HD23	2.10	0.52
1:B:180:GLU:CG	1:B:181:GLY:H	2.21	0.52
1:C:520:ALA:HB1	1:C:521:PRO:CD	2.40	0.52
1:A:850:ILE:HG12	1:A:850:ILE:O	2.09	0.52
1:C:108:THR:OG1	1:C:234:ASN:O	2.28	0.52
1:B:941:THR:HG22	1:B:943:SER:H	1.76	0.51
1:A:120:VAL:HG12	1:A:121:ASN:N	2.25	0.51
1:A:520:ALA:HB1	1:A:521:PRO:CD	2.39	0.51

*Continued on next page...*

*Continued from previous page...*

Atom-1	Atom-2	Interatomic distance (Å)	Clash overlap (Å)
1:B:1117:THR:CG2	1:B:1140:PRO:HD3	2.40	0.51
1:B:520:ALA:HB1	1:B:521:PRO:CD	2.39	0.51
1:A:825:LYS:NZ	1:A:942:ALA:HA	2.26	0.51
1:C:850:ILE:HG12	1:C:850:ILE:O	2.09	0.51
1:C:941:THR:HG22	1:C:943:SER:H	1.75	0.51
1:B:185:ASN:HB2	1:B:212:LEU:O	2.10	0.51
1:B:736:VAL:HG23	1:B:858:LEU:CD2	2.40	0.51
1:B:331:ASN:HB3	3:B:1306:NAG:O5	2.10	0.51
1:B:120:VAL:HG12	1:B:121:ASN:N	2.26	0.50
1:A:206:LYS:HD2	1:A:222:ALA:O	2.11	0.50
1:B:56:LEU:HD13	1:B:269:TYR:O	2.12	0.50
1:C:1140:PRO:HD2	1:C:1141:LEU:H	1.76	0.50
1:A:236:THR:O	1:A:237:ARG:HG3	2.11	0.50
1:A:269:TYR:C	1:A:270:LEU:HD23	2.32	0.50
1:B:973:ILE:CG2	1:B:992:GLN:HE22	2.19	0.50
1:C:231:ILE:HG13	1:C:232:GLY:H	1.76	0.50
1:A:971:GLY:O	1:A:995:ARG:NE	2.45	0.50
1:B:269:TYR:C	1:B:270:LEU:HD23	2.31	0.50
1:A:382:VAL:HG22	1:A:383:SER:H	1.77	0.50
1:A:941:THR:HG22	1:A:943:SER:H	1.76	0.50
1:B:922:LEU:O	1:B:926:GLN:HG3	2.12	0.50
1:B:100:ILE:HG22	1:B:100:ILE:O	2.12	0.50
1:B:325:SER:O	1:B:326:ILE:HG13	2.12	0.50
1:C:212:LEU:HG	1:C:213:VAL:N	2.26	0.50
1:C:236:THR:O	1:C:237:ARG:HG3	2.12	0.50
1:C:269:TYR:C	1:C:270:LEU:HD23	2.32	0.50
1:A:108:THR:OG1	1:A:234:ASN:O	2.30	0.50
1:C:185:ASN:HB2	1:C:212:LEU:O	2.12	0.50
1:A:656:VAL:HG22	1:A:657:ASN:N	2.27	0.49
1:C:206:LYS:HD2	1:C:222:ALA:O	2.11	0.49
1:C:1138:TYR:CZ	1:C:1140:PRO:HA	2.47	0.49
1:A:922:LEU:O	1:A:926:GLN:HG3	2.12	0.49
1:C:656:VAL:HG22	1:C:657:ASN:N	2.26	0.49
1:B:206:LYS:HD2	1:B:222:ALA:O	2.12	0.49
1:C:382:VAL:HG22	1:C:383:SER:H	1.76	0.49
3:B:1303:NAG:HO3	3:B:1303:NAG:C7	2.21	0.49
1:C:56:LEU:HD13	1:C:269:TYR:O	2.12	0.49
1:A:324:GLU:HG2	1:A:325:SER:N	2.27	0.49
1:B:236:THR:O	1:B:237:ARG:HG3	2.13	0.49
1:A:331:ASN:HB3	3:A:1306:NAG:O5	2.12	0.49
3:B:1302:NAG:O7	3:B:1302:NAG:O3	2.30	0.49

*Continued on next page...*

*Continued from previous page...*

Atom-1	Atom-2	Interatomic distance (Å)	Clash overlap (Å)
1:C:324:GLU:HG2	1:C:325:SER:N	2.28	0.49
1:C:731:MET:HG2	1:C:732:THR:H	1.76	0.48
1:A:206:LYS:NZ	1:A:222:ALA:O	2.39	0.48
1:A:328:ARG:O	1:A:329:PHE:HD1	1.96	0.48
1:C:954:GLN:O	1:C:955:ASN:HB2	2.13	0.48
1:A:33:THR:HA	1:A:58:PHE:CD1	2.48	0.48
1:A:212:LEU:HG	1:A:213:VAL:N	2.27	0.48
1:B:29:THR:O	1:B:62:VAL:N	2.47	0.48
1:B:382:VAL:HG22	1:B:383:SER:H	1.77	0.48
1:B:328:ARG:O	1:B:329:PHE:HD1	1.96	0.48
1:C:41:LYS:O	1:C:42:VAL:HG13	2.13	0.48
1:C:335:LEU:HD12	1:C:362:VAL:HG13	1.93	0.48
1:A:41:LYS:O	1:A:42:VAL:HG13	2.14	0.48
1:A:964:LYS:HD2	1:A:964:LYS:O	2.14	0.48
1:B:41:LYS:O	1:B:42:VAL:HG13	2.14	0.48
1:B:53:ASP:HB2	1:B:55:PHE:CE2	2.49	0.48
1:B:272:PRO:O	1:B:273:ARG:HD3	2.14	0.48
1:A:403:ARG:HG2	1:A:404:GLY:N	2.22	0.48
1:C:378:LYS:O	1:C:432:CYS:HA	2.14	0.48
1:A:143:VAL:HG12	1:A:153:MET:O	2.13	0.48
1:B:884:SER:OG	1:B:893:ALA:HB1	2.13	0.48
1:A:53:ASP:HB2	1:A:55:PHE:CE2	2.49	0.48
1:A:272:PRO:O	1:A:273:ARG:HD3	2.13	0.48
1:A:343:ASN:OD1	1:A:343:ASN:O	2.32	0.48
1:A:770:ILE:O	1:A:770:ILE:HG22	2.14	0.48
1:B:656:VAL:HG22	1:B:657:ASN:N	2.27	0.48
1:C:922:LEU:O	1:C:926:GLN:HG3	2.13	0.47
1:A:125:ASN:HA	1:A:175:PHE:CE2	2.49	0.47
1:A:674:TYR:O	1:A:675:GLN:HG3	2.15	0.47
1:B:403:ARG:HG2	1:B:404:GLY:N	2.22	0.47
1:A:307:THR:HG23	1:A:602:THR:CG2	2.43	0.47
1:B:130:VAL:HG12	1:B:130:VAL:O	2.14	0.47
1:B:324:GLU:HG2	1:B:325:SER:N	2.29	0.47
1:C:272:PRO:O	1:C:273:ARG:HD3	2.14	0.47
1:B:317:ASN:HB3	1:B:593:GLY:O	2.14	0.47
1:C:884:SER:OG	1:C:893:ALA:HB1	2.15	0.47
1:B:197:ILE:O	1:B:200:TYR:HB2	2.14	0.47
1:B:689:SER:O	1:B:689:SER:OG	2.27	0.47
1:B:881:THR:HG22	1:B:881:THR:O	2.15	0.47
1:C:125:ASN:HA	1:C:175:PHE:CE2	2.50	0.47
1:A:130:VAL:HB	1:A:168:PHE:HB3	1.97	0.47

*Continued on next page...*

*Continued from previous page...*

Atom-1	Atom-2	Interatomic distance (Å)	Clash overlap (Å)
1:B:33:THR:HA	1:B:58:PHE:CD1	2.50	0.47
1:C:53:ASP:HB2	1:C:55:PHE:CE2	2.49	0.47
1:C:328:ARG:O	1:C:329:PHE:HD1	1.97	0.47
1:A:643:PHE:CE2	1:A:645:THR:HG22	2.50	0.46
1:A:986:PRO:HB2	1:A:987:PRO:HD3	1.97	0.46
1:C:307:THR:HG23	1:C:602:THR:CG2	2.46	0.46
1:A:231:ILE:HG13	1:A:232:GLY:H	1.80	0.46
1:B:770:ILE:O	1:B:770:ILE:HG22	2.14	0.46
1:B:378:LYS:O	1:B:432:CYS:HA	2.15	0.46
1:B:529:LYS:HE2	1:B:529:LYS:HB2	1.78	0.46
1:A:954:GLN:O	1:A:955:ASN:HB2	2.14	0.46
1:A:1117:THR:CG2	1:A:1140:PRO:HD3	2.44	0.46
1:A:1142:GLN:HB3	1:A:1143:PRO:HD3	1.98	0.46
1:B:759:PHE:HD2	1:B:759:PHE:O	1.99	0.46
1:C:324:GLU:OE1	1:C:539:VAL:HG12	2.15	0.46
1:C:583:GLU:OE2	1:C:585:LEU:HD21	2.15	0.46
1:B:180:GLU:OE1	1:B:180:GLU:HA	2.15	0.46
1:A:324:GLU:OE2	1:A:534:VAL:HG11	2.16	0.46
1:C:615:VAL:HG11	1:C:620:VAL:HG22	1.97	0.46
1:A:145:TYR:C	1:A:152:TRP:HA	2.36	0.46
1:B:583:GLU:OE2	1:B:585:LEU:HD21	2.15	0.46
1:C:1142:GLN:HB3	1:C:1143:PRO:HD3	1.98	0.46
1:B:622:VAL:HG23	1:B:622:VAL:O	2.15	0.46
1:A:378:LYS:O	1:A:432:CYS:HA	2.15	0.46
1:B:1053:PRO:O	1:B:1054:GLN:HG2	2.16	0.46
1:A:245:HIS:O	1:A:246:ARG:HG3	2.16	0.46
1:A:29:THR:O	1:A:62:VAL:N	2.49	0.45
1:B:395:VAL:HA	1:B:514:SER:O	2.16	0.45
1:B:617:CYS:HB3	1:B:642:VAL:CG1	2.46	0.45
1:C:187:LYS:HA	1:C:210:ILE:O	2.15	0.45
1:B:212:LEU:HG	1:B:213:VAL:N	2.26	0.45
1:B:245:HIS:O	1:B:246:ARG:HG3	2.16	0.45
1:B:407:VAL:O	1:B:407:VAL:HG22	2.17	0.45
1:C:1138:TYR:CE2	1:C:1140:PRO:HA	2.52	0.45
1:B:125:ASN:HA	1:B:175:PHE:CE2	2.51	0.45
1:B:465:GLU:HG2	1:B:466:ARG:N	2.31	0.45
1:C:674:TYR:O	1:C:675:GLN:HG3	2.16	0.45
1:C:770:ILE:O	1:C:770:ILE:HG22	2.16	0.45
1:C:145:TYR:C	1:C:152:TRP:HA	2.37	0.45
1:A:47:VAL:C	1:A:48:LEU:HD23	2.36	0.45
1:B:145:TYR:C	1:B:152:TRP:HA	2.37	0.45

*Continued on next page...*

*Continued from previous page...*

Atom-1	Atom-2	Interatomic distance (Å)	Clash overlap (Å)
1:B:206:LYS:NZ	1:B:222:ALA:O	2.39	0.45
1:C:47:VAL:C	1:C:48:LEU:HD23	2.37	0.45
1:C:197:ILE:O	1:C:200:TYR:HB2	2.16	0.45
1:C:395:VAL:HA	1:C:514:SER:O	2.17	0.45
1:B:47:VAL:C	1:B:48:LEU:HD23	2.37	0.45
1:B:592:PHE:CE2	1:C:854:LYS:HE2	2.51	0.45
1:C:531:THR:CG2	1:C:532:ASN:H	2.29	0.45
1:A:197:ILE:O	1:A:200:TYR:HB2	2.16	0.45
1:C:33:THR:HA	1:C:58:PHE:CD1	2.51	0.45
1:A:911:VAL:HG12	1:A:912:THR:H	1.81	0.45
1:A:1057:PRO:O	1:A:1058:HIS:HB2	2.17	0.45
1:B:89:GLY:O	1:B:90:VAL:HG23	2.17	0.45
1:B:182:LYS:HE2	1:B:182:LYS:HB3	1.77	0.45
1:B:537:LYS:NZ	1:B:537:LYS:HB3	2.32	0.45
1:C:212:LEU:CG	1:C:213:VAL:N	2.80	0.45
1:C:245:HIS:O	1:C:246:ARG:HG3	2.16	0.45
1:B:143:VAL:HG12	1:B:153:MET:O	2.17	0.44
1:A:407:VAL:HG22	1:A:407:VAL:O	2.17	0.44
1:B:474:GLN:NE2	1:B:476:GLY:O	2.39	0.44
1:B:643:PHE:CE2	1:B:645:THR:HG22	2.53	0.44
1:A:583:GLU:OE2	1:A:585:LEU:HD21	2.18	0.44
1:A:622:VAL:HG23	1:A:622:VAL:O	2.17	0.44
1:C:324:GLU:OE2	1:C:534:VAL:HG11	2.17	0.44
1:C:643:PHE:CE2	1:C:645:THR:HG22	2.52	0.44
1:A:465:GLU:HG2	1:A:466:ARG:N	2.33	0.44
1:B:129:LYS:HE3	1:B:131:CYS:SG	2.58	0.44
1:B:187:LYS:HA	1:B:210:ILE:O	2.17	0.44
1:B:986:PRO:HB2	1:B:987:PRO:HD3	1.98	0.44
1:A:129:LYS:HE3	1:A:131:CYS:SG	2.57	0.44
1:A:615:VAL:HG11	1:A:620:VAL:HG22	1.96	0.44
1:B:109:THR:HG22	1:B:114:THR:OG1	2.17	0.44
1:B:615:VAL:HG11	1:B:620:VAL:HG22	1.98	0.44
1:C:407:VAL:HG22	1:C:407:VAL:O	2.18	0.44
1:C:465:GLU:HG2	1:C:466:ARG:N	2.33	0.44
1:C:770:ILE:HD11	1:C:1012:LEU:HD12	1.99	0.44
1:C:986:PRO:HB2	1:C:987:PRO:HD3	1.98	0.44
1:A:187:LYS:HA	1:A:210:ILE:O	2.17	0.44
1:A:212:LEU:CG	1:A:213:VAL:N	2.81	0.44
1:B:1142:GLN:HB3	1:B:1143:PRO:HD3	1.99	0.44
1:B:674:TYR:O	1:B:675:GLN:HG3	2.18	0.44
1:C:552:LEU:HA	1:C:586:ASP:O	2.16	0.44

*Continued on next page...*

*Continued from previous page...*

Atom-1	Atom-2	Interatomic distance (Å)	Clash overlap (Å)
1:C:1053:PRO:O	1:C:1054:GLN:HG2	2.17	0.44
1:A:826:VAL:HG13	1:A:826:VAL:O	2.18	0.44
3:A:1302:NAG:O7	3:A:1302:NAG:O3	2.31	0.44
1:B:212:LEU:CG	1:B:213:VAL:N	2.80	0.44
1:C:143:VAL:HG11	1:C:179:LEU:HD13	2.00	0.44
1:B:34:ARG:HH12	1:B:189:LEU:CD2	2.31	0.43
1:B:398:ASP:O	1:B:511:VAL:HA	2.17	0.43
1:A:34:ARG:HH12	1:A:189:LEU:CD2	2.31	0.43
1:B:350:VAL:HG22	1:B:402:ILE:HG22	2.00	0.43
1:C:109:THR:HG22	1:C:114:THR:OG1	2.18	0.43
1:C:622:VAL:HG23	1:C:622:VAL:O	2.17	0.43
1:C:881:THR:O	1:C:881:THR:HG22	2.18	0.43
1:C:1139:ASP:OD1	1:C:1140:PRO:CD	2.66	0.43
1:B:68:ILE:HD12	1:B:69:HIS:H	1.82	0.43
1:B:1057:PRO:O	1:B:1058:HIS:HB2	2.17	0.43
1:B:29:THR:HG22	1:B:30:ASN:N	2.33	0.43
1:B:266:TYR:O	1:B:267:VAL:HG23	2.18	0.43
1:C:566:GLY:C	1:C:567:ARG:HG2	2.39	0.43
1:C:1057:PRO:O	1:C:1058:HIS:HB2	2.19	0.43
1:A:552:LEU:HA	1:A:586:ASP:O	2.18	0.43
1:B:143:VAL:HG11	1:B:179:LEU:HD13	1.99	0.43
1:B:552:LEU:HA	1:B:586:ASP:O	2.17	0.43
1:C:120:VAL:HG12	1:C:121:ASN:H	1.84	0.43
1:C:120:VAL:HG12	1:C:121:ASN:N	2.34	0.43
3:C:1302:NAG:O7	3:C:1302:NAG:O3	2.30	0.43
1:C:29:THR:O	1:C:62:VAL:N	2.51	0.43
1:C:129:LYS:HE3	1:C:131:CYS:SG	2.58	0.43
1:C:236:THR:O	1:C:236:THR:HG23	2.19	0.43
1:C:568:ASP:OD1	1:C:568:ASP:N	2.50	0.43
1:C:826:VAL:HG13	1:C:826:VAL:O	2.19	0.43
1:B:826:VAL:HG13	1:B:826:VAL:O	2.18	0.43
1:C:382:VAL:HG22	1:C:383:SER:N	2.33	0.43
1:A:770:ILE:HD11	1:A:1012:LEU:HD12	2.00	0.43
1:B:34:ARG:HH12	1:B:189:LEU:HD21	1.83	0.43
1:B:592:PHE:CZ	1:C:854:LYS:HE2	2.54	0.43
1:B:911:VAL:HG12	1:B:912:THR:H	1.84	0.43
1:A:307:THR:HG23	1:A:602:THR:HG22	2.00	0.43
1:B:307:THR:HG23	1:B:602:THR:CG2	2.49	0.43
1:A:382:VAL:HG22	1:A:383:SER:N	2.34	0.42
1:B:382:VAL:HG22	1:B:383:SER:N	2.33	0.42
1:C:65:PHE:O	1:C:264:ALA:HB1	2.19	0.42

*Continued on next page...*

*Continued from previous page...*

Atom-1	Atom-2	Interatomic distance (Å)	Clash overlap (Å)
1:A:881:THR:HG22	1:A:881:THR:O	2.19	0.42
1:B:213:VAL:HG23	1:B:214:ARG:N	2.34	0.42
1:C:553:THR:HG22	1:C:554:GLU:H	1.84	0.42
1:C:617:CYS:HB3	1:C:642:VAL:CG1	2.49	0.42
1:B:212:LEU:CG	1:B:213:VAL:H	2.28	0.42
1:C:34:ARG:HH12	1:C:189:LEU:CD2	2.32	0.42
1:C:213:VAL:HG23	1:C:214:ARG:H	1.85	0.42
1:C:542:ASN:HA	1:C:546:LEU:O	2.19	0.42
1:A:703:ASN:HD22	1:A:703:ASN:HA	1.63	0.42
1:B:533:LEU:HD23	1:B:533:LEU:H	1.83	0.42
1:B:1114:ILE:O	1:B:1114:ILE:HG13	2.19	0.42
1:C:767:LEU:HD23	1:C:767:LEU:HA	1.88	0.42
1:C:1133:VAL:HG12	1:C:1134:ASN:N	2.34	0.42
1:A:719:THR:HG22	1:A:720:ILE:N	2.35	0.42
1:C:29:THR:HG22	1:C:30:ASN:N	2.35	0.42
1:C:213:VAL:HG23	1:C:214:ARG:N	2.35	0.42
1:C:719:THR:HG22	1:C:720:ILE:N	2.34	0.42
1:A:29:THR:O	1:A:62:VAL:HB	2.20	0.42
1:A:110:LEU:N	1:A:110:LEU:HD23	2.34	0.42
1:B:213:VAL:HG23	1:B:214:ARG:H	1.85	0.42
1:C:180:GLU:HG3	1:C:181:GLY:N	2.23	0.42
1:B:110:LEU:N	1:B:110:LEU:HD23	2.34	0.42
1:B:719:THR:HG22	1:B:720:ILE:N	2.34	0.42
1:A:236:THR:O	1:A:236:THR:HG23	2.20	0.42
1:A:109:THR:HG22	1:A:114:THR:OG1	2.20	0.41
1:B:206:LYS:HB3	1:B:223:LEU:HD23	2.02	0.41
1:B:722:VAL:HA	1:B:1064:HIS:O	2.20	0.41
1:A:29:THR:HG22	1:A:30:ASN:N	2.34	0.41
1:C:911:VAL:HG12	1:C:912:THR:H	1.84	0.41
1:A:182:LYS:HB3	1:A:182:LYS:HE2	1.79	0.41
1:A:213:VAL:HG23	1:A:214:ARG:H	1.84	0.41
1:B:1142:GLN:HE22	1:C:1141:LEU:HD12	1.85	0.41
1:C:182:LYS:HB3	1:C:182:LYS:HE2	1.79	0.41
1:C:350:VAL:HG22	1:C:402:ILE:HG22	2.02	0.41
1:A:34:ARG:HH12	1:A:189:LEU:HD21	1.86	0.41
1:C:64:TRP:HE1	1:C:264:ALA:CB	2.33	0.41
1:C:954:GLN:C	1:C:956:ALA:H	2.22	0.41
1:A:395:VAL:HA	1:A:514:SER:O	2.19	0.41
3:A:1303:NAG:HO3	3:A:1303:NAG:C7	2.27	0.41
1:C:56:LEU:HD12	1:C:57:PRO:CD	2.49	0.41
1:C:722:VAL:HA	1:C:1064:HIS:O	2.20	0.41

*Continued on next page...*



Continued from previous page...

Atom-1	Atom-2	Interatomic distance (Å)	Clash overlap (Å)
1:A:213:VAL:HG23	1:A:214:ARG:N	2.34	0.41
1:A:1114:ILE:HG13	1:A:1114:ILE:O	2.20	0.41
1:C:1114:ILE:O	1:C:1114:ILE:HG13	2.21	0.41
1:A:56:LEU:HD12	1:A:57:PRO:CD	2.51	0.41
1:A:203:ILE:O	1:A:226:LEU:HB3	2.21	0.41
1:A:208:THR:HA	1:A:209:PRO:HD3	1.92	0.41
1:A:722:VAL:HA	1:A:1064:HIS:O	2.21	0.41
1:B:64:TRP:HE1	1:B:264:ALA:CB	2.34	0.41
1:B:111:ASP:OD1	1:B:111:ASP:C	2.59	0.41
1:B:304:LYS:HB3	1:B:304:LYS:HE2	1.86	0.41
1:C:110:LEU:N	1:C:110:LEU:HD23	2.34	0.41
1:C:577:ARG:HA	1:C:583:GLU:O	2.21	0.41
1:C:34:ARG:HH12	1:C:189:LEU:HD21	1.85	0.40
1:A:102:ARG:HA	1:A:102:ARG:HD2	1.96	0.40
1:B:130:VAL:HB	1:B:168:PHE:HB3	2.03	0.40
1:B:814:LYS:HE3	1:B:814:LYS:HB2	1.98	0.40
1:C:304:LYS:HE2	1:C:304:LYS:HB3	1.86	0.40
3:C:1303:NAG:HO3	3:C:1303:NAG:C7	2.28	0.40
1:B:124:THR:O	1:B:174:PRO:HA	2.22	0.40
1:B:231:ILE:HG13	1:B:232:GLY:N	2.36	0.40
1:B:390:LEU:HD13	1:B:517:LEU:HD21	2.04	0.40
1:C:206:LYS:HB3	1:C:223:LEU:HD23	2.04	0.40
1:C:307:THR:HG23	1:C:602:THR:HG22	2.03	0.40
1:C:441:LEU:HD12	1:C:441:LEU:HA	1.90	0.40
1:B:108:THR:OG1	1:B:234:ASN:O	2.38	0.40
1:B:236:THR:O	1:B:236:THR:HG23	2.21	0.40

There are no symmetry-related clashes.

## 5.3 Torsion angles [\(i\)](#)

### 5.3.1 Protein backbone [\(i\)](#)

In the following table, the Percentiles column shows the percent Ramachandran outliers of the chain as a percentile score with respect to all PDB entries followed by that with respect to all EM entries.

The Analysed column shows the number of residues for which the backbone conformation was analysed, and the total number of residues.



Mol	Chain	Analysed	Favoured	Allowed	Outliers	Percentiles	
1	A	1039/1276 (81%)	983 (95%)	56 (5%)	0	100	100
1	B	1039/1276 (81%)	982 (94%)	57 (6%)	0	100	100
1	C	1039/1276 (81%)	984 (95%)	55 (5%)	0	100	100
All	All	3117/3828 (81%)	2949 (95%)	168 (5%)	0	100	100

There are no Ramachandran outliers to report.

### 5.3.2 Protein sidechains [i](#)

In the following table, the Percentiles column shows the percent sidechain outliers of the chain as a percentile score with respect to all PDB entries followed by that with respect to all EM entries.

The Analysed column shows the number of residues for which the sidechain conformation was analysed, and the total number of residues.

Mol	Chain	Analysed	Rotameric	Outliers	Percentiles	
1	A	916/1106 (83%)	898 (98%)	18 (2%)	50	71
1	B	916/1106 (83%)	897 (98%)	19 (2%)	48	69
1	C	916/1106 (83%)	893 (98%)	23 (2%)	42	66
All	All	2748/3318 (83%)	2688 (98%)	60 (2%)	47	68

All (60) residues with a non-rotameric sidechain are listed below:

Mol	Chain	Res	Type
1	A	69	HIS
1	A	79	PHE
1	A	97	LYS
1	A	99	ASN
1	A	122	ASN
1	A	154	GLU
1	A	215	ASP
1	A	287	ASP
1	A	334	ASN
1	A	408	ARG
1	A	427	ASP
1	A	428	ASP
1	A	556	ASN
1	A	592	PHE
1	A	616	ASN

*Continued on next page...*

*Continued from previous page...*

<b>Mol</b>	<b>Chain</b>	<b>Res</b>	<b>Type</b>
1	A	703	ASN
1	A	759	PHE
1	A	886	TRP
1	B	79	PHE
1	B	97	LYS
1	B	99	ASN
1	B	102	ARG
1	B	122	ASN
1	B	154	GLU
1	B	215	ASP
1	B	244	LEU
1	B	287	ASP
1	B	408	ARG
1	B	428	ASP
1	B	538	CYS
1	B	556	ASN
1	B	616	ASN
1	B	759	PHE
1	B	886	TRP
1	B	895	GLN
1	B	955	ASN
1	B	1073	LYS
1	C	79	PHE
1	C	97	LYS
1	C	99	ASN
1	C	102	ARG
1	C	122	ASN
1	C	154	GLU
1	C	215	ASP
1	C	277	LEU
1	C	287	ASP
1	C	334	ASN
1	C	343	ASN
1	C	408	ARG
1	C	428	ASP
1	C	536	ASN
1	C	537	LYS
1	C	538	CYS
1	C	556	ASN
1	C	592	PHE
1	C	616	ASN
1	C	759	PHE

*Continued on next page...*

*Continued from previous page...*

Mol	Chain	Res	Type
1	C	886	TRP
1	C	895	GLN
1	C	1073	LYS

Sometimes sidechains can be flipped to improve hydrogen bonding and reduce clashes. All (4) such sidechains are listed below:

Mol	Chain	Res	Type
1	A	703	ASN
1	B	895	GLN
1	B	992	GLN
1	C	895	GLN

### 5.3.3 RNA [i](#)

There are no RNA molecules in this entry.

## 5.4 Non-standard residues in protein, DNA, RNA chains [i](#)

There are no non-standard protein/DNA/RNA residues in this entry.

## 5.5 Carbohydrates [i](#)

There are no oligosaccharides in this entry.

## 5.6 Ligand geometry [i](#)

18 ligands are modelled in this entry.

In the following table, the Counts columns list the number of bonds (or angles) for which Mogul statistics could be retrieved, the number of bonds (or angles) that are observed in the model and the number of bonds (or angles) that are defined in the Chemical Component Dictionary. The Link column lists molecule types, if any, to which the group is linked. The Z score for a bond length (or angle) is the number of standard deviations the observed value is removed from the expected value. A bond length (or angle) with  $|Z| > 2$  is considered an outlier worth inspection. RMSZ is the root-mean-square of all Z scores of the bond lengths (or angles).

Mol	Type	Chain	Res	Link	Bond lengths			Bond angles		
					Counts	RMSZ	$\# Z  > 2$	Counts	RMSZ	$\# Z  > 2$
3	NAG	C	1302	1	14,14,15	0.24	0	17,19,21	0.40	0
3	NAG	A	1303	1	14,14,15	0.25	0	17,19,21	0.35	0

Mol	Type	Chain	Res	Link	Bond lengths			Bond angles		
					Counts	RMSZ	# Z  > 2	Counts	RMSZ	# Z  > 2
2	Q83	C	1301	-	23,23,23	3.80	10 (43%)	30,31,31	1.66	4 (13%)
3	NAG	A	1305	1	14,14,15	0.21	0	17,19,21	0.40	0
3	NAG	B	1302	1	14,14,15	0.26	0	17,19,21	0.39	0
3	NAG	B	1305	1	14,14,15	0.20	0	17,19,21	0.41	0
3	NAG	C	1303	1	14,14,15	0.28	0	17,19,21	0.39	0
3	NAG	C	1304	1	14,14,15	0.23	0	17,19,21	0.44	0
3	NAG	A	1304	1	14,14,15	0.24	0	17,19,21	0.44	0
3	NAG	B	1306	1	14,14,15	0.23	0	17,19,21	0.35	0
2	Q83	A	1301	-	23,23,23	3.80	10 (43%)	30,31,31	1.65	4 (13%)
3	NAG	A	1302	1	14,14,15	0.25	0	17,19,21	0.40	0
3	NAG	B	1304	1	14,14,15	0.24	0	17,19,21	0.43	0
3	NAG	C	1306	1	14,14,15	0.20	0	17,19,21	0.42	0
2	Q83	B	1301	-	23,23,23	3.79	10 (43%)	30,31,31	1.67	4 (13%)
3	NAG	B	1303	1	14,14,15	0.24	0	17,19,21	0.34	0
3	NAG	C	1305	1	14,14,15	0.19	0	17,19,21	0.40	0
3	NAG	A	1306	1	14,14,15	0.23	0	17,19,21	0.35	0

In the following table, the Chirals column lists the number of chiral outliers, the number of chiral centers analysed, the number of these observed in the model and the number defined in the Chemical Component Dictionary. Similar counts are reported in the Torsion and Rings columns. '-' means no outliers of that kind were identified.

Mol	Type	Chain	Res	Link	Chirals	Torsions	Rings
3	NAG	C	1302	1	-	4/6/23/26	0/1/1/1
3	NAG	A	1303	1	-	4/6/23/26	0/1/1/1
2	Q83	C	1301	-	-	7/16/25/25	0/2/2/2
3	NAG	A	1305	1	-	0/6/23/26	0/1/1/1
3	NAG	B	1302	1	-	4/6/23/26	0/1/1/1
3	NAG	B	1305	1	-	0/6/23/26	0/1/1/1
3	NAG	C	1303	1	-	4/6/23/26	0/1/1/1
3	NAG	C	1304	1	-	2/6/23/26	0/1/1/1
3	NAG	A	1304	1	-	2/6/23/26	0/1/1/1
3	NAG	B	1306	1	-	4/6/23/26	0/1/1/1
2	Q83	A	1301	-	-	7/16/25/25	0/2/2/2
3	NAG	A	1302	1	-	4/6/23/26	0/1/1/1
3	NAG	B	1304	1	-	3/6/23/26	0/1/1/1
3	NAG	C	1306	1	-	2/6/23/26	0/1/1/1
2	Q83	B	1301	-	-	7/16/25/25	0/2/2/2
3	NAG	B	1303	1	-	4/6/23/26	0/1/1/1

Continued on next page...

Continued from previous page...

Mol	Type	Chain	Res	Link	Chirals	Torsions	Rings
3	NAG	C	1305	1	-	0/6/23/26	0/1/1/1
3	NAG	A	1306	1	-	4/6/23/26	0/1/1/1

All (30) bond length outliers are listed below:

Mol	Chain	Res	Type	Atoms	Z	Observed(Å)	Ideal(Å)
2	C	1301	Q83	C12-C13	8.80	1.54	1.38
2	B	1301	Q83	C12-C13	8.79	1.54	1.38
2	A	1301	Q83	C12-C13	8.78	1.54	1.38
2	C	1301	Q83	C14-C15	8.09	1.52	1.39
2	A	1301	Q83	C14-C15	8.04	1.52	1.39
2	B	1301	Q83	C14-C15	8.03	1.52	1.39
2	A	1301	Q83	C11-C10	7.24	1.51	1.39
2	B	1301	Q83	C11-C10	7.23	1.51	1.39
2	C	1301	Q83	C11-C10	7.21	1.51	1.39
2	A	1301	Q83	C7-N1	5.79	1.45	1.36
2	B	1301	Q83	C7-N1	5.76	1.45	1.36
2	C	1301	Q83	C7-N1	5.76	1.45	1.36
2	B	1301	Q83	C15-N1	4.69	1.48	1.39
2	A	1301	Q83	C15-N1	4.68	1.48	1.39
2	C	1301	Q83	C15-N1	4.67	1.48	1.39
2	A	1301	Q83	C15-C10	-4.53	1.34	1.39
2	B	1301	Q83	C15-C10	-4.49	1.34	1.39
2	C	1301	Q83	C15-C10	-4.48	1.34	1.39
2	A	1301	Q83	C12-C11	-3.48	1.32	1.38
2	B	1301	Q83	C12-C11	-3.48	1.32	1.38
2	C	1301	Q83	C12-C11	-3.43	1.32	1.38
2	C	1301	Q83	C8-N1	-3.36	1.43	1.47
2	C	1301	Q83	C14-C13	-3.35	1.33	1.38
2	B	1301	Q83	C14-C13	-3.34	1.33	1.38
2	A	1301	Q83	C8-N1	-3.33	1.43	1.47
2	A	1301	Q83	C14-C13	-3.32	1.33	1.38
2	B	1301	Q83	C8-N1	-3.30	1.43	1.47
2	A	1301	Q83	C8-C9	-3.06	1.48	1.53
2	B	1301	Q83	C8-C9	-3.03	1.48	1.53
2	C	1301	Q83	C8-C9	-3.01	1.48	1.53

All (12) bond angle outliers are listed below:

Mol	Chain	Res	Type	Atoms	Z	Observed(°)	Ideal(°)
2	B	1301	Q83	C9-C8-N1	3.56	108.05	104.94
2	A	1301	Q83	C9-C8-N1	3.50	108.00	104.94

Continued on next page...

*Continued from previous page...*

Mol	Chain	Res	Type	Atoms	Z	Observed(°)	Ideal(°)
2	C	1301	Q83	C9-C8-N1	3.44	107.95	104.94
2	B	1301	Q83	C11-C10-C15	3.39	122.29	119.80
2	C	1301	Q83	C11-C10-C15	3.39	122.28	119.80
2	A	1301	Q83	C11-C10-C15	3.38	122.28	119.80
2	C	1301	Q83	C10-C15-N1	-2.79	108.13	109.66
2	B	1301	Q83	C10-C15-N1	-2.73	108.16	109.66
2	A	1301	Q83	C10-C15-N1	-2.71	108.17	109.66
2	A	1301	Q83	C14-C15-C10	-2.21	118.27	121.34
2	B	1301	Q83	C14-C15-C10	-2.20	118.28	121.34
2	C	1301	Q83	C14-C15-C10	-2.19	118.30	121.34

There are no chirality outliers.

All (62) torsion outliers are listed below:

Mol	Chain	Res	Type	Atoms
3	A	1303	NAG	C1-C2-N2-C7
3	B	1303	NAG	C1-C2-N2-C7
2	A	1301	Q83	C14-C13-N2-O4
2	A	1301	Q83	C12-C13-N2-O5
2	B	1301	Q83	C12-C13-N2-O4
2	B	1301	Q83	C14-C13-N2-O5
2	C	1301	Q83	C12-C13-N2-O4
2	C	1301	Q83	C14-C13-N2-O5
2	A	1301	Q83	C12-C13-N2-O4
2	A	1301	Q83	C14-C13-N2-O5
2	B	1301	Q83	C14-C13-N2-O4
2	B	1301	Q83	C12-C13-N2-O5
2	C	1301	Q83	C14-C13-N2-O4
2	C	1301	Q83	C12-C13-N2-O5
3	B	1302	NAG	C4-C5-C6-O6
3	C	1302	NAG	C4-C5-C6-O6
3	A	1302	NAG	C4-C5-C6-O6
3	C	1306	NAG	C4-C5-C6-O6
3	A	1303	NAG	C4-C5-C6-O6
3	C	1303	NAG	C1-C2-N2-C7
3	B	1302	NAG	O5-C5-C6-O6
3	C	1302	NAG	O5-C5-C6-O6
3	A	1302	NAG	O5-C5-C6-O6
3	C	1306	NAG	O5-C5-C6-O6
3	B	1303	NAG	C4-C5-C6-O6
3	C	1303	NAG	C4-C5-C6-O6
3	A	1306	NAG	O5-C5-C6-O6

*Continued on next page...*

*Continued from previous page...*

Mol	Chain	Res	Type	Atoms
3	A	1303	NAG	O5-C5-C6-O6
3	B	1303	NAG	O5-C5-C6-O6
3	B	1306	NAG	O5-C5-C6-O6
3	C	1303	NAG	O5-C5-C6-O6
3	A	1302	NAG	C1-C2-N2-C7
3	B	1302	NAG	C1-C2-N2-C7
3	C	1302	NAG	C1-C2-N2-C7
2	A	1301	Q83	C2-C3-C4-C5
2	B	1301	Q83	C2-C3-C4-C5
2	C	1301	Q83	C2-C3-C4-C5
3	A	1306	NAG	C1-C2-N2-C7
3	B	1306	NAG	C1-C2-N2-C7
3	B	1304	NAG	C4-C5-C6-O6
3	A	1306	NAG	C4-C5-C6-O6
3	B	1306	NAG	C4-C5-C6-O6
3	B	1304	NAG	O5-C5-C6-O6
3	C	1304	NAG	C4-C5-C6-O6
3	A	1303	NAG	C3-C2-N2-C7
3	A	1304	NAG	C3-C2-N2-C7
3	B	1303	NAG	C3-C2-N2-C7
3	B	1304	NAG	C3-C2-N2-C7
3	C	1303	NAG	C3-C2-N2-C7
3	C	1304	NAG	C3-C2-N2-C7
2	A	1301	Q83	O2-C1-C2-C3
2	B	1301	Q83	O2-C1-C2-C3
2	C	1301	Q83	O2-C1-C2-C3
3	A	1304	NAG	C4-C5-C6-O6
2	A	1301	Q83	O1-C1-C2-C3
2	C	1301	Q83	O1-C1-C2-C3
2	B	1301	Q83	O1-C1-C2-C3
3	A	1302	NAG	C3-C2-N2-C7
3	A	1306	NAG	C3-C2-N2-C7
3	B	1302	NAG	C3-C2-N2-C7
3	B	1306	NAG	C3-C2-N2-C7
3	C	1302	NAG	C3-C2-N2-C7

There are no ring outliers.

8 monomers are involved in 11 short contacts:

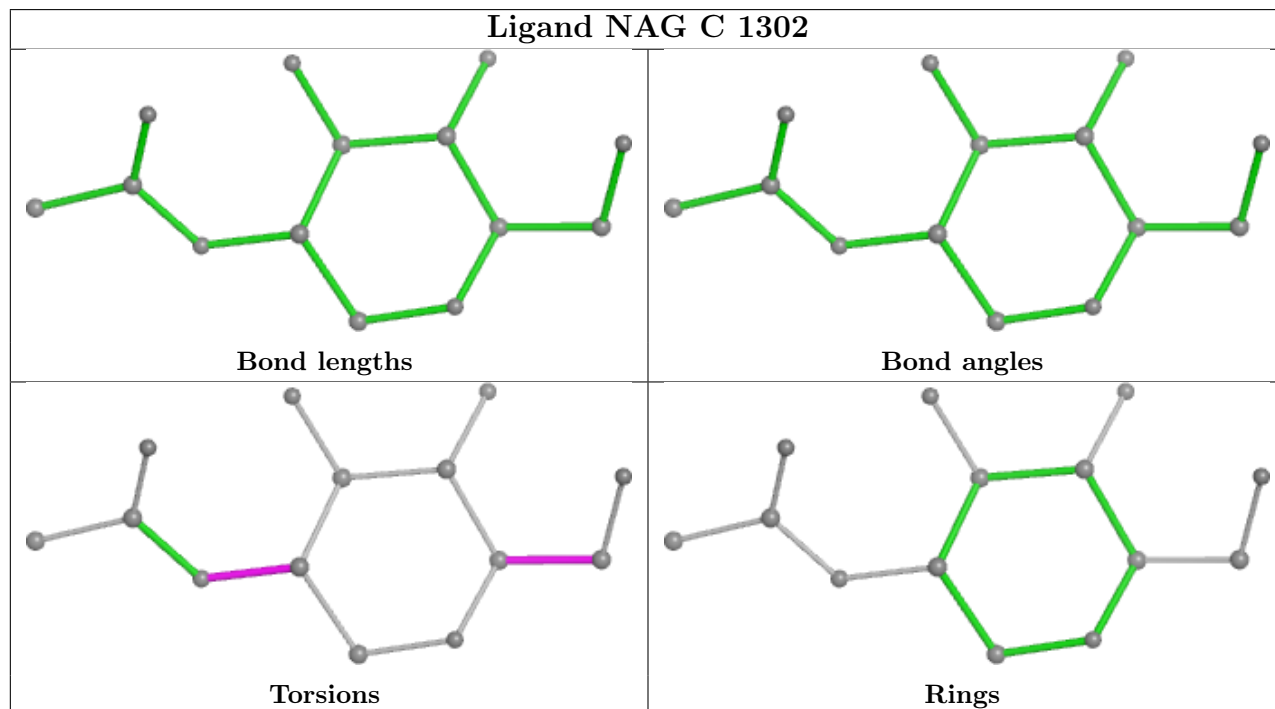
Mol	Chain	Res	Type	Clashes	Symm-Clashes
3	C	1302	NAG	1	0
3	A	1303	NAG	2	0

*Continued on next page...*

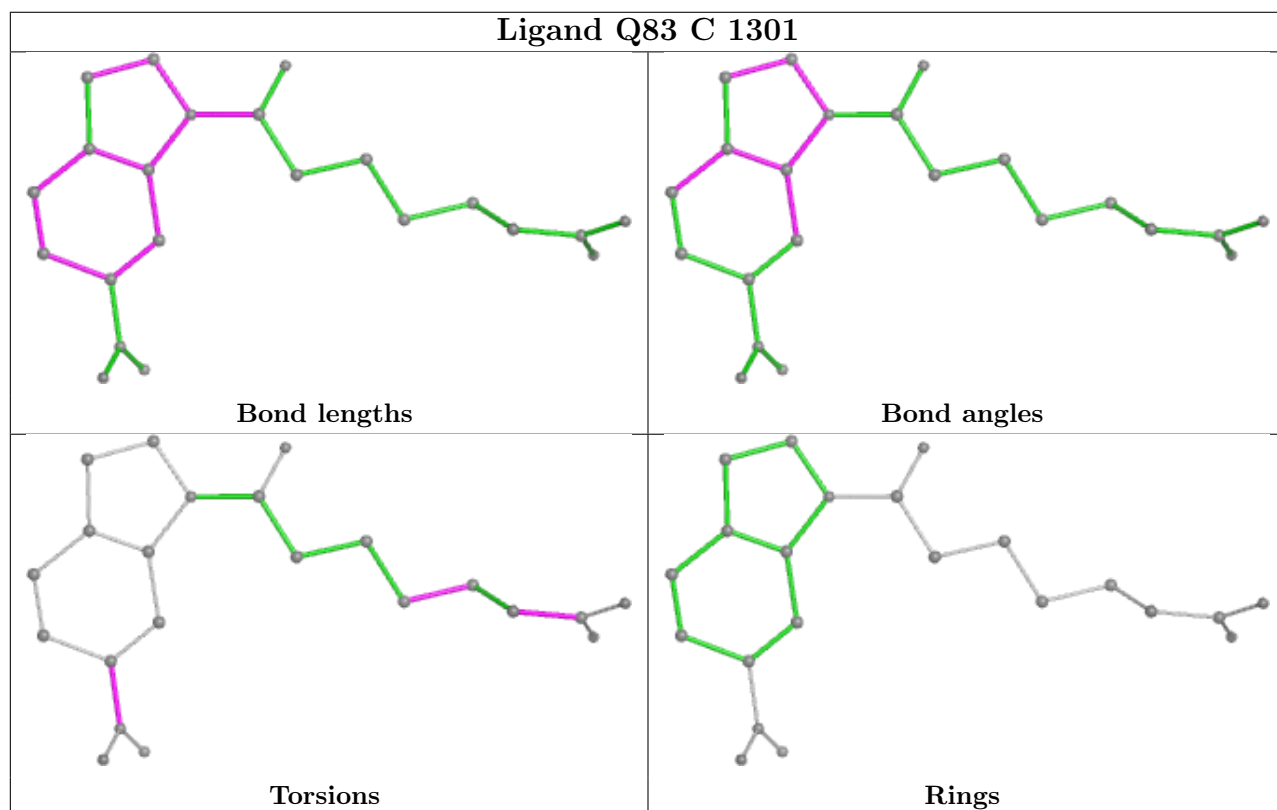
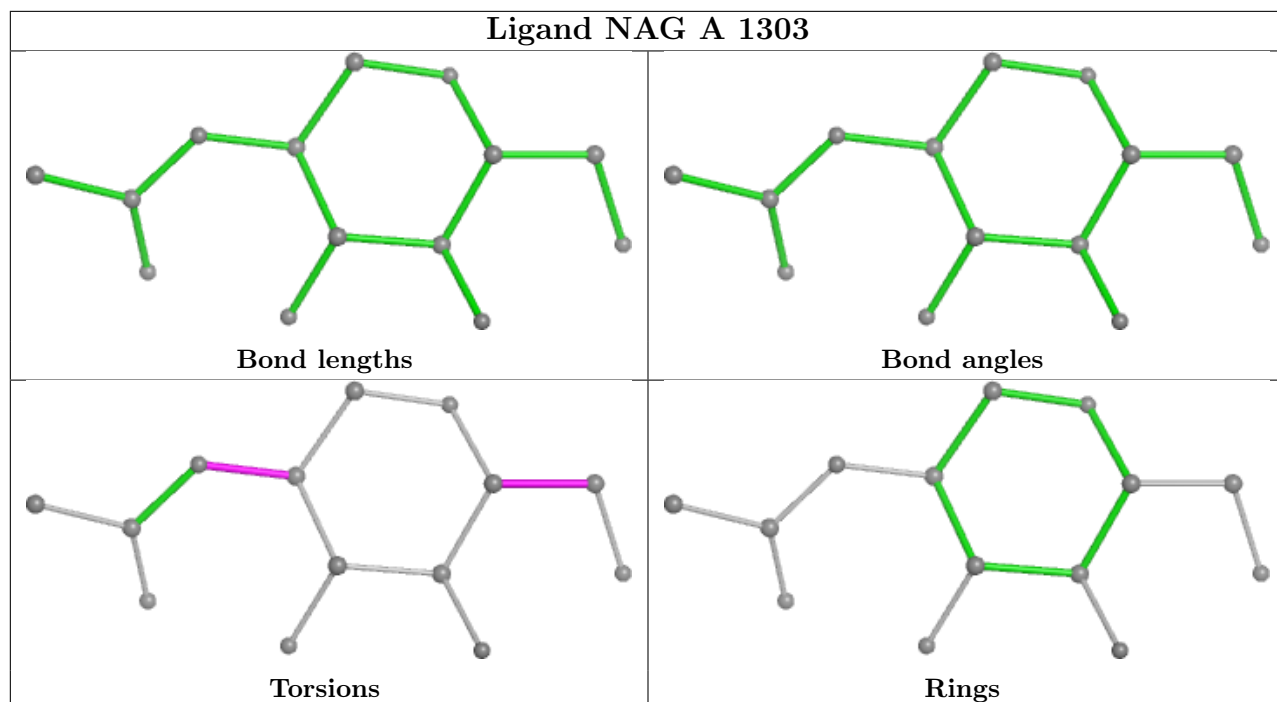
Continued from previous page...

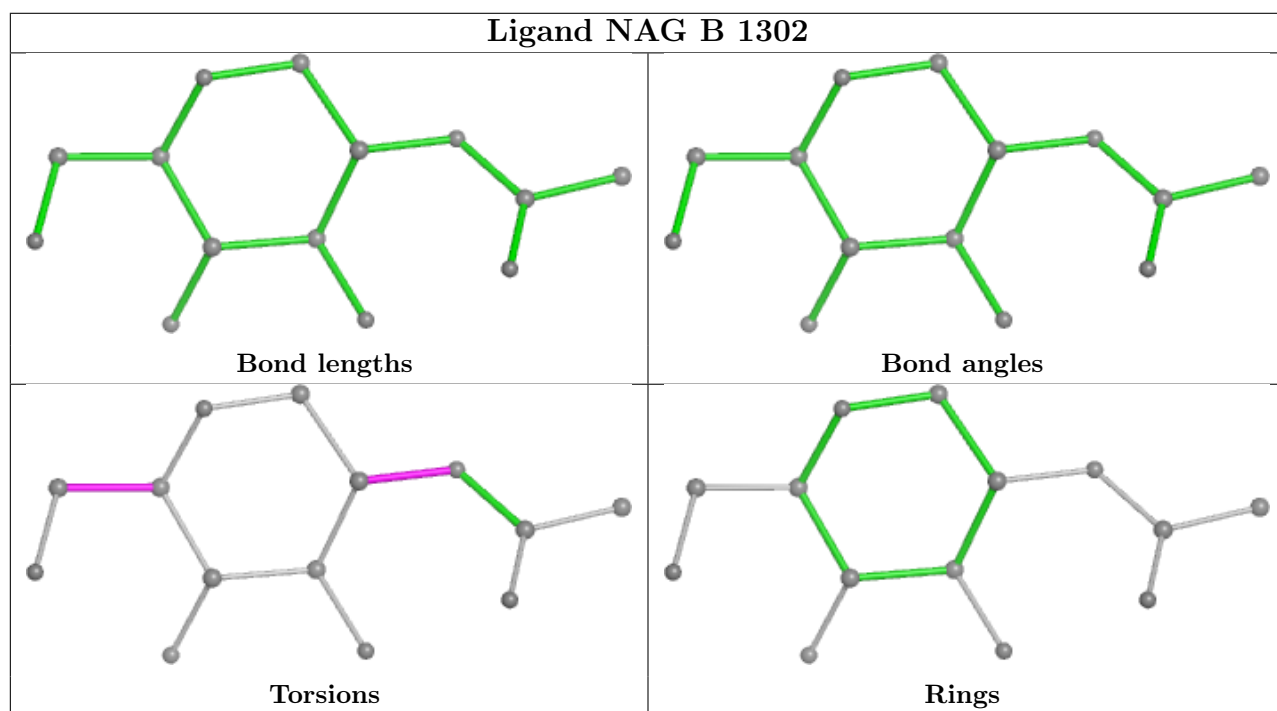
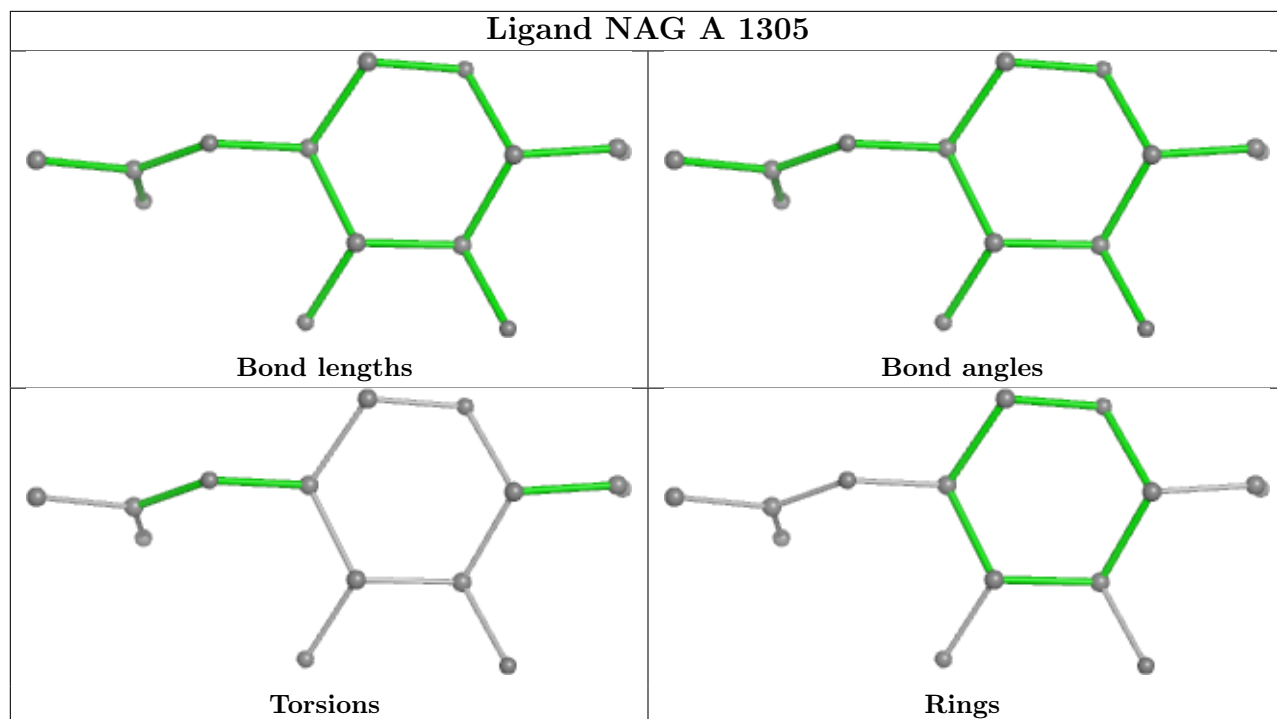
Mol	Chain	Res	Type	Clashes	Symm-Clashes
3	B	1302	NAG	1	0
3	C	1303	NAG	2	0
3	B	1306	NAG	1	0
3	A	1302	NAG	1	0
3	B	1303	NAG	2	0
3	A	1306	NAG	1	0

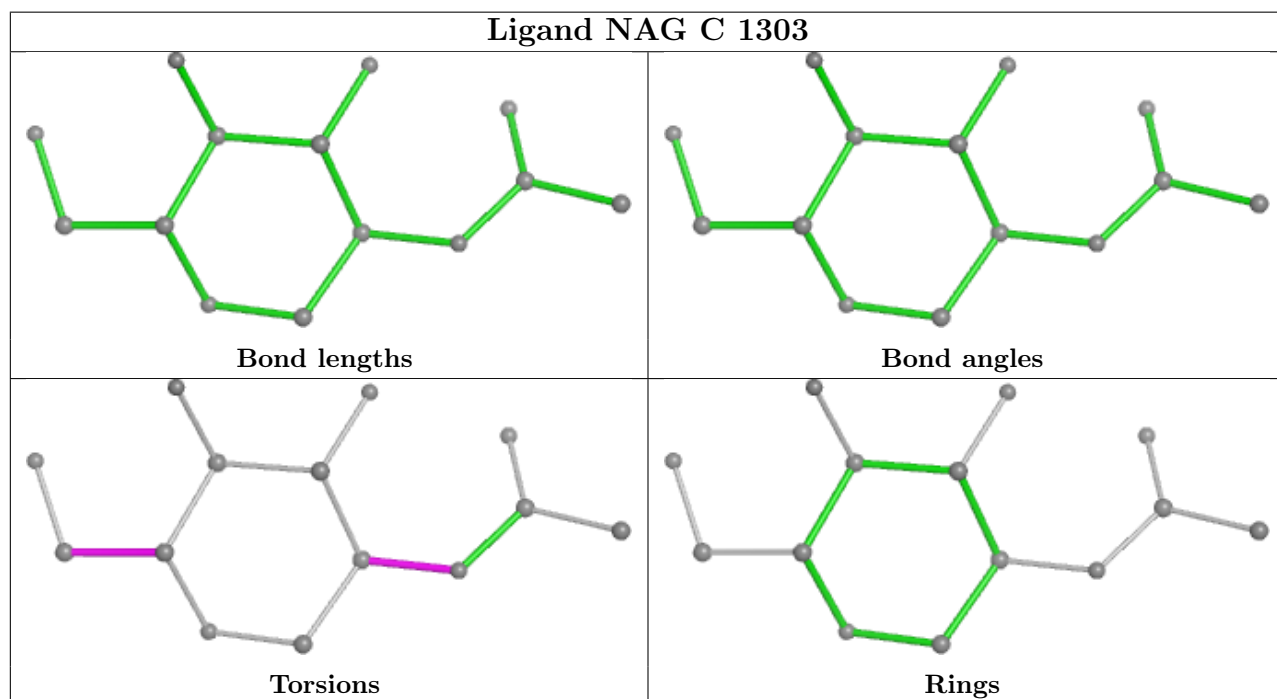
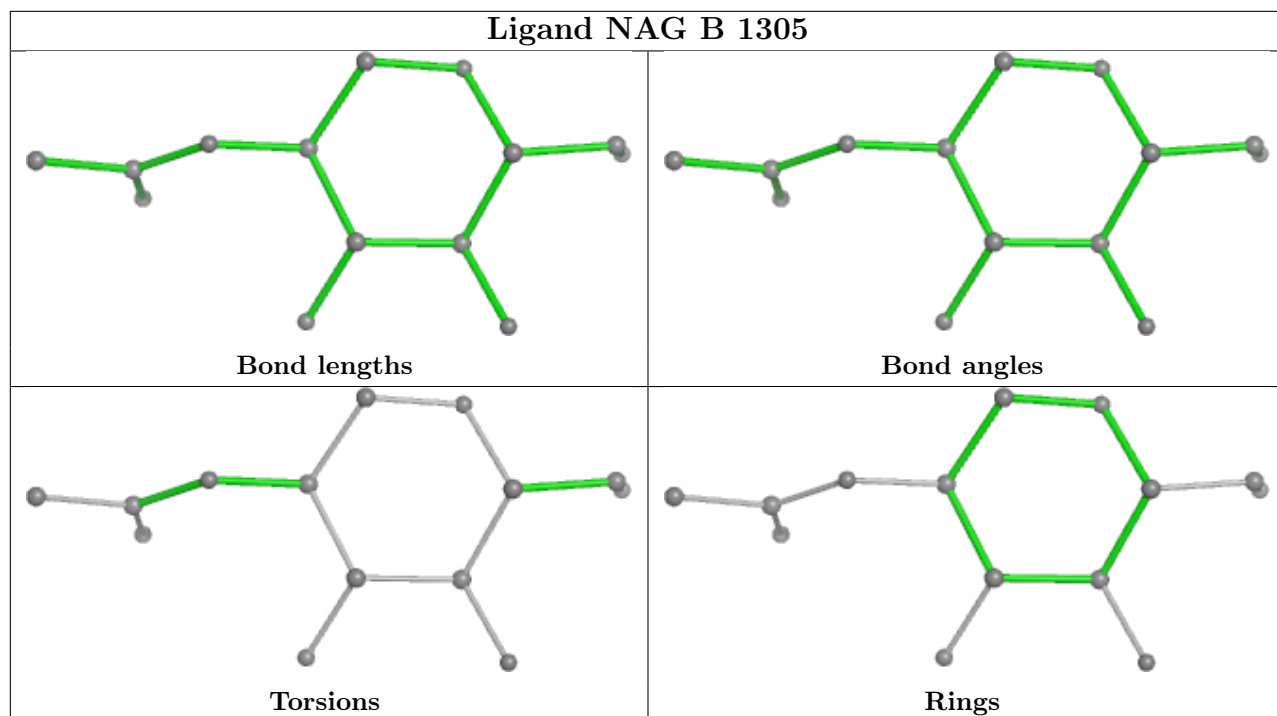
The following is a two-dimensional graphical depiction of Mogul quality analysis of bond lengths, bond angles, torsion angles, and ring geometry for all instances of the Ligand of Interest. In addition, ligands with molecular weight > 250 and outliers as shown on the validation Tables will also be included. For torsion angles, if less than 5% of the Mogul distribution of torsion angles is within 10 degrees of the torsion angle in question, then that torsion angle is considered an outlier. Any bond that is central to one or more torsion angles identified as an outlier by Mogul will be highlighted in the graph. For rings, the root-mean-square deviation (RMSD) between the ring in question and similar rings identified by Mogul is calculated over all ring torsion angles. If the average RMSD is greater than 60 degrees and the minimal RMSD between the ring in question and any Mogul-identified rings is also greater than 60 degrees, then that ring is considered an outlier. The outliers are highlighted in purple. The color gray indicates Mogul did not find sufficient equivalents in the CSD to analyse the geometry.

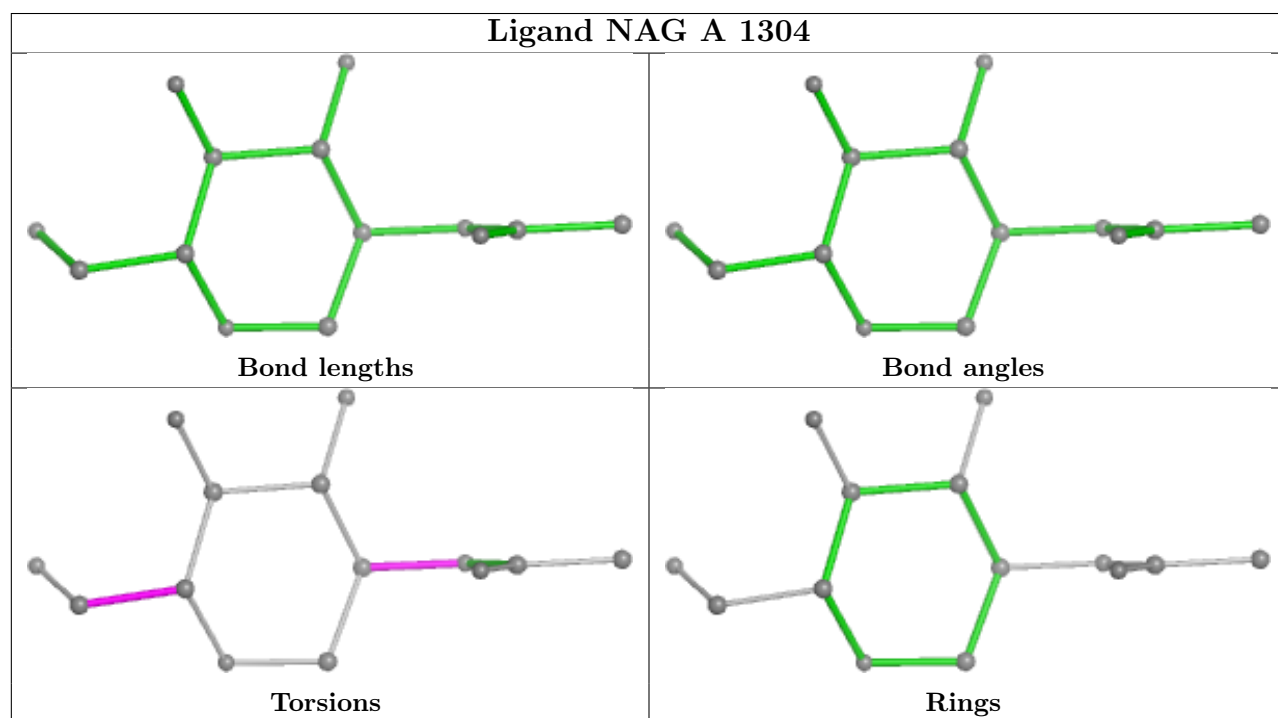
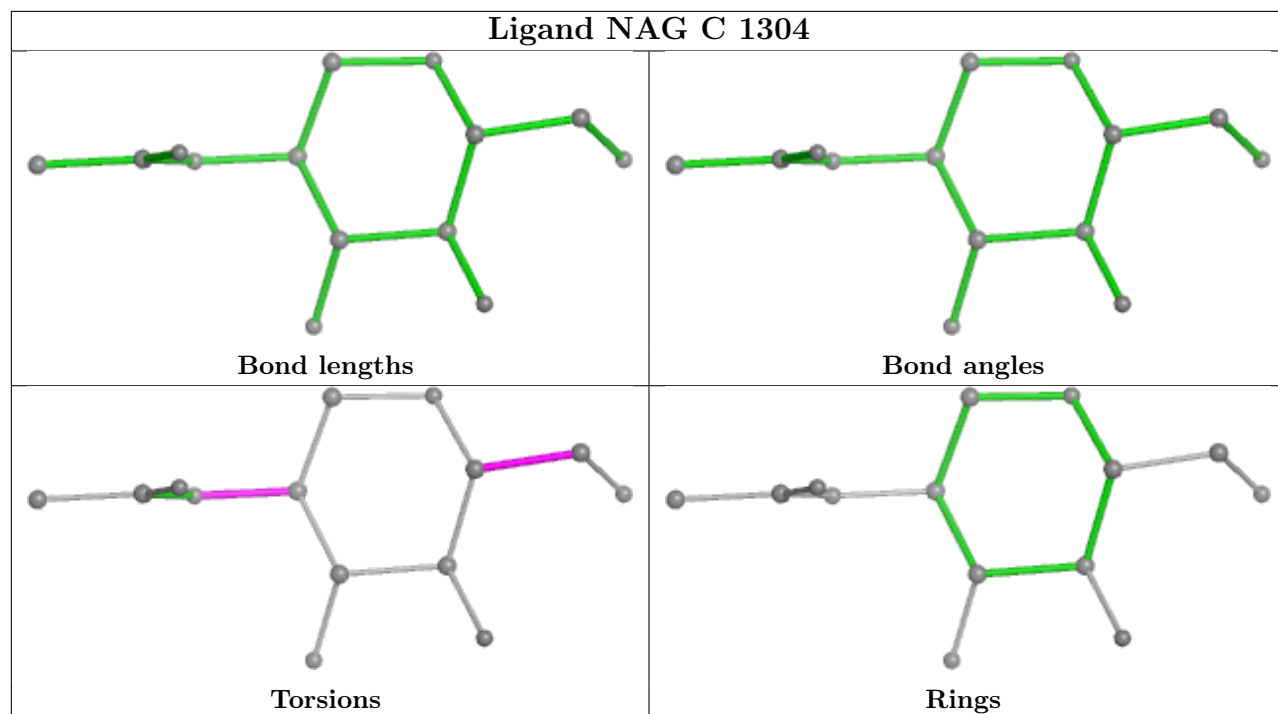


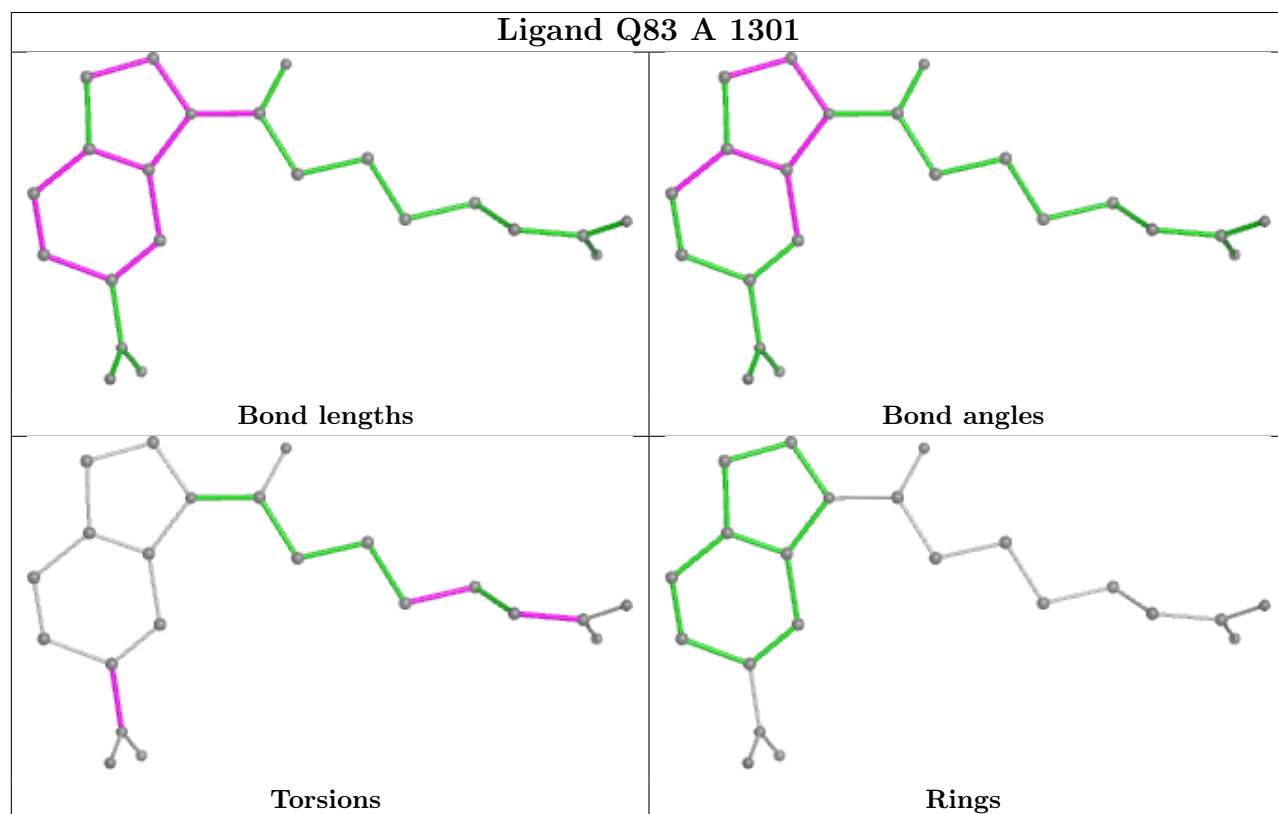
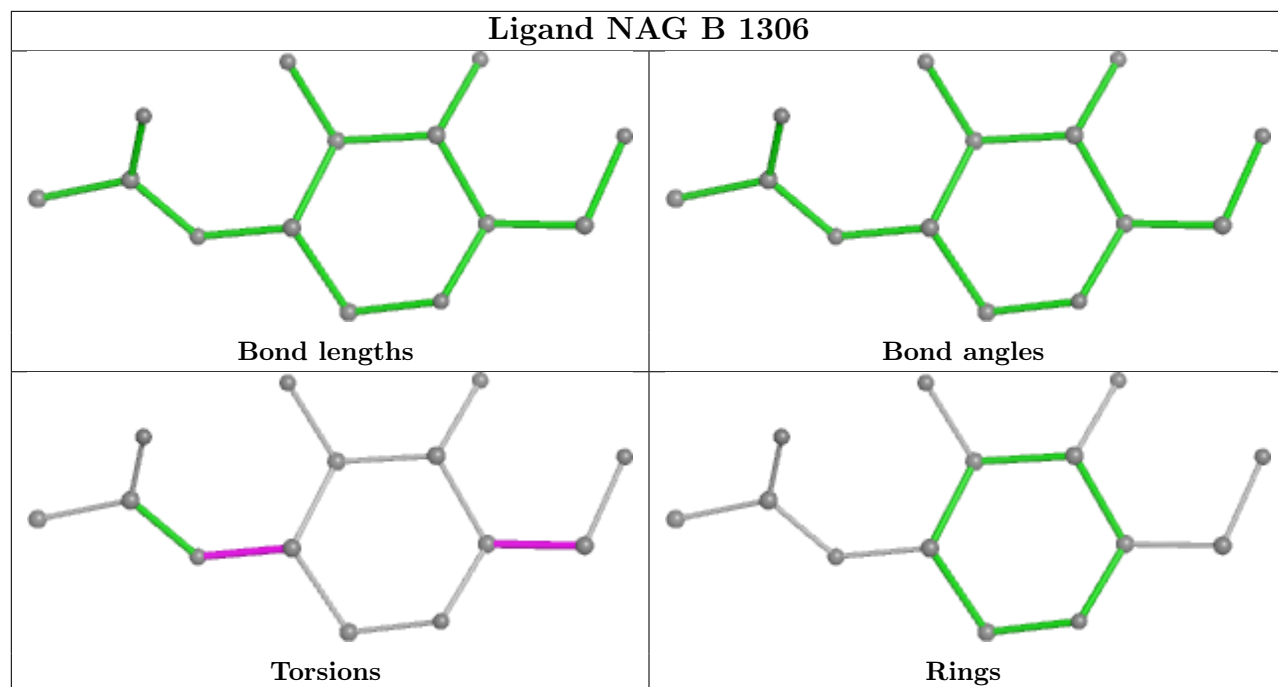


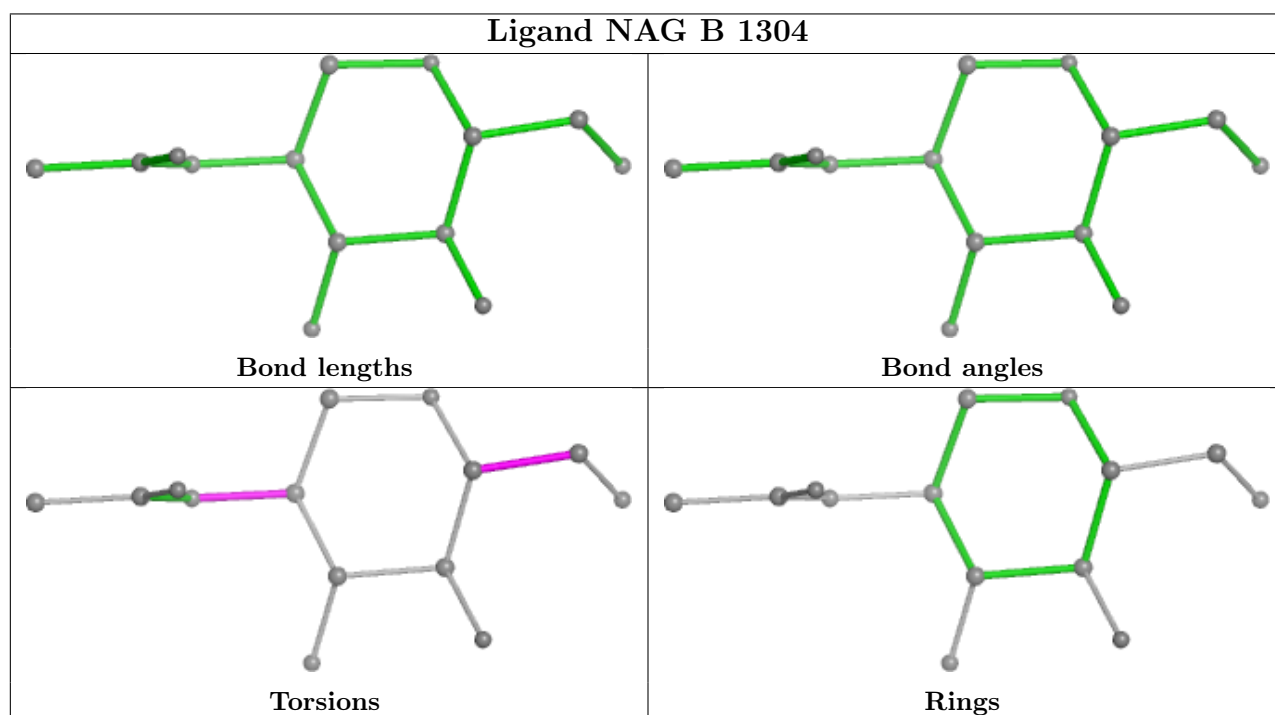
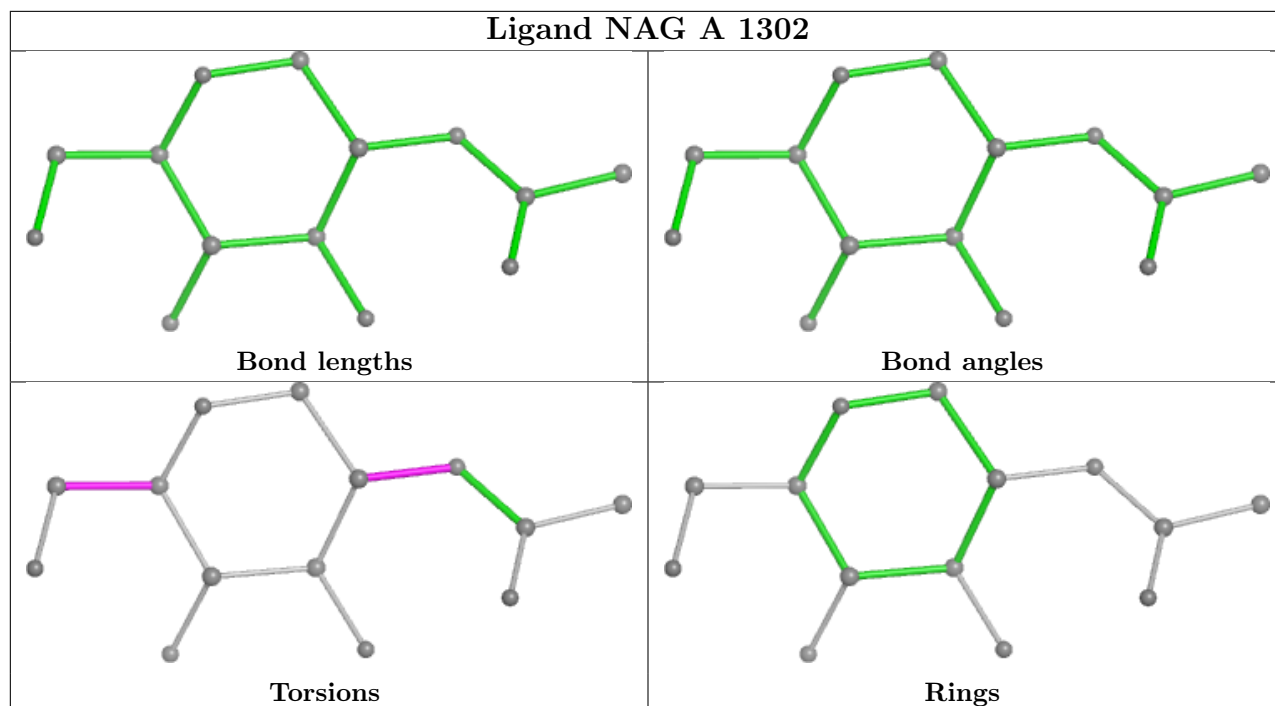


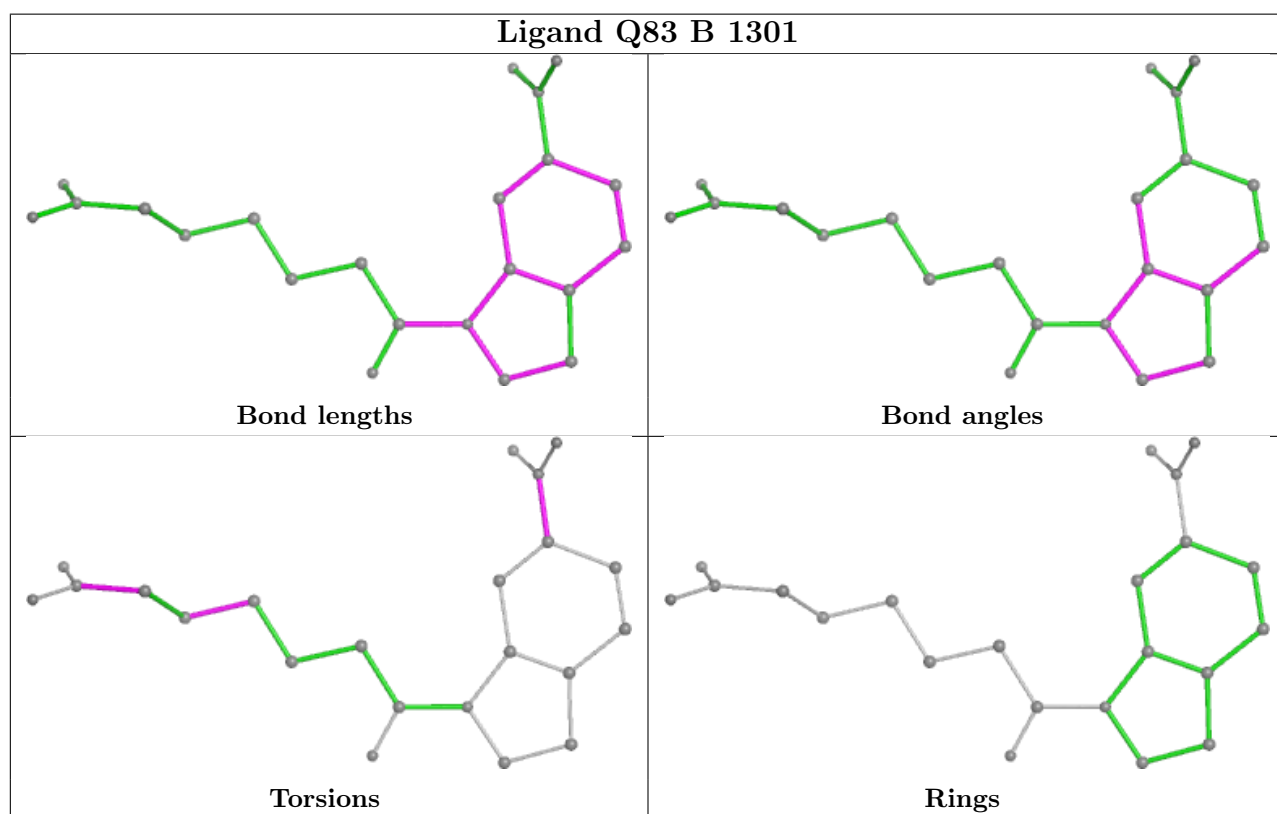
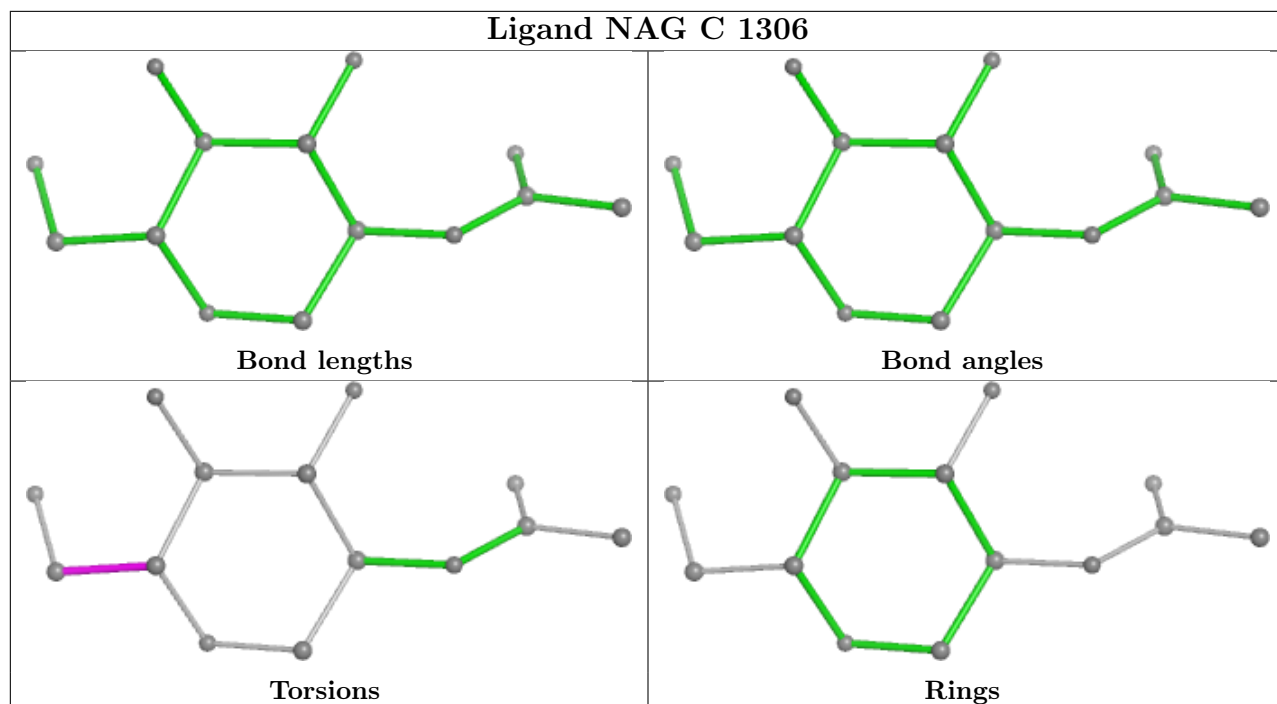


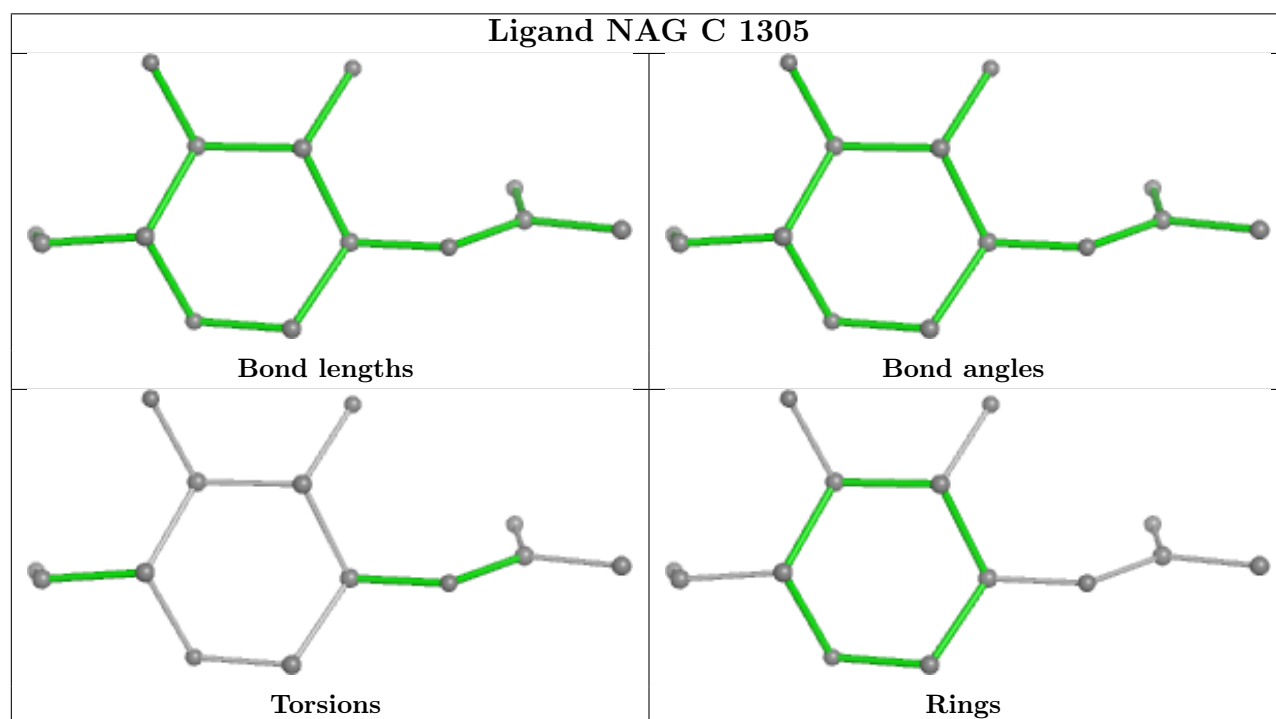
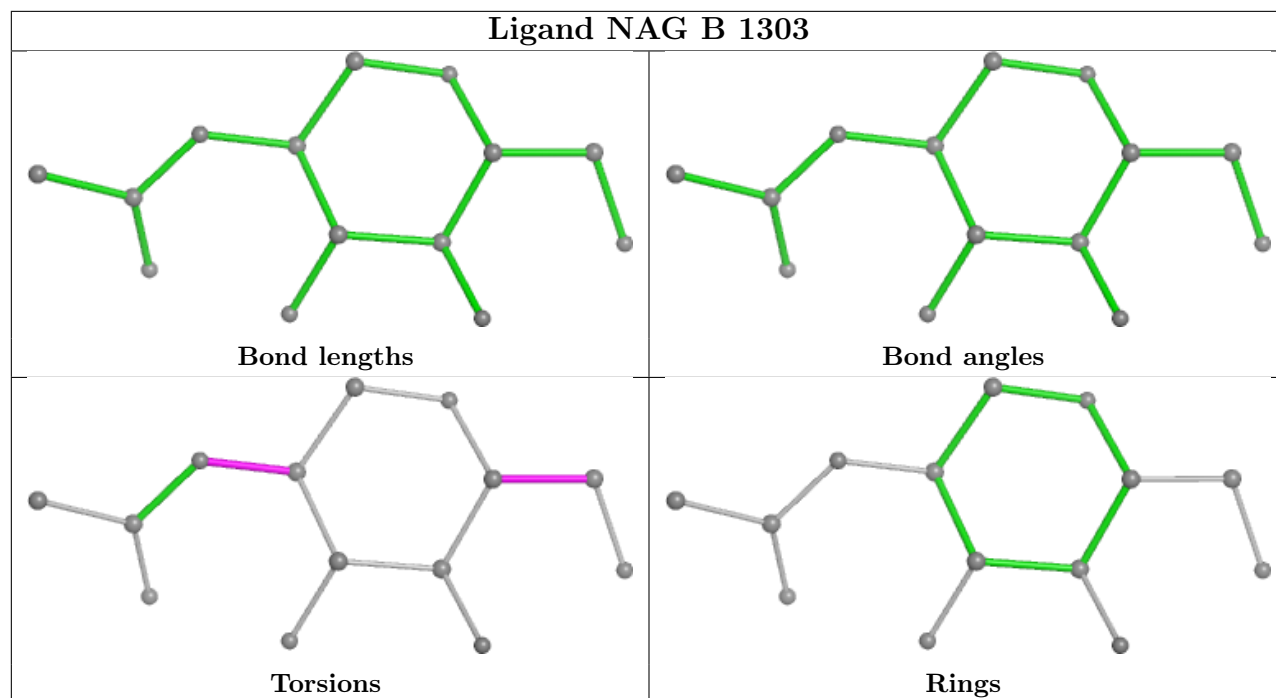




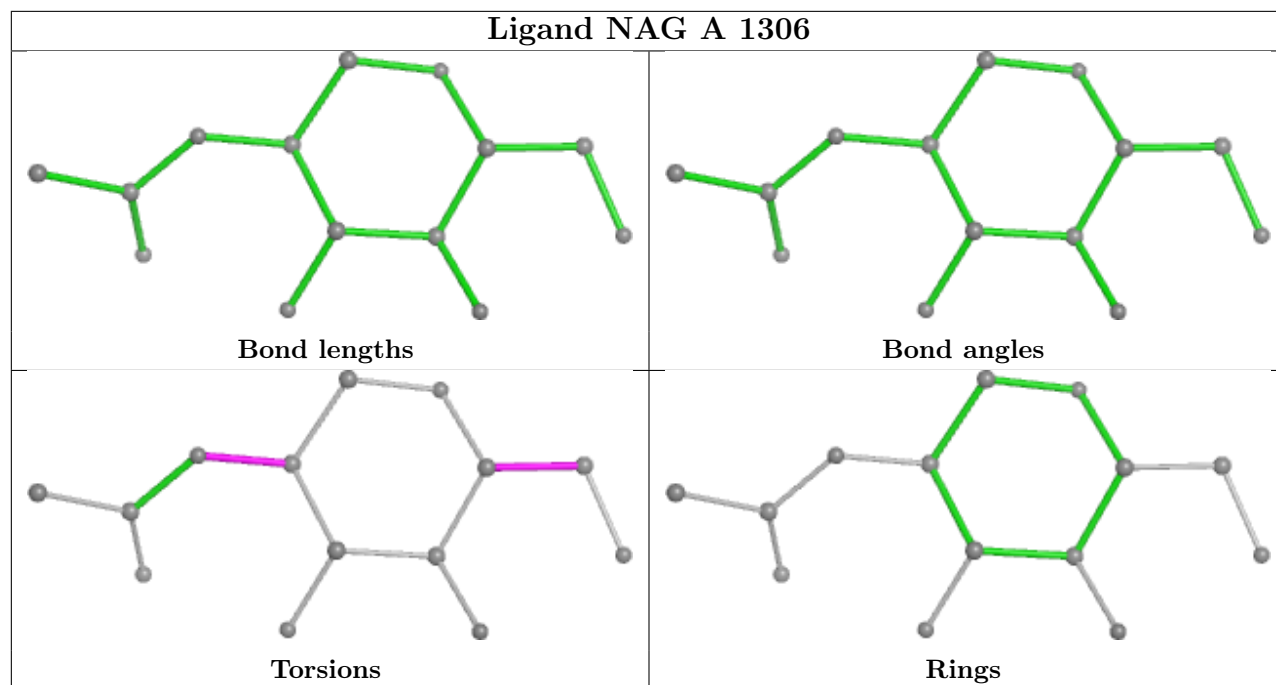












## 5.7 Other polymers [i](#)

There are no such residues in this entry.

## 5.8 Polymer linkage issues [i](#)

There are no chain breaks in this entry.

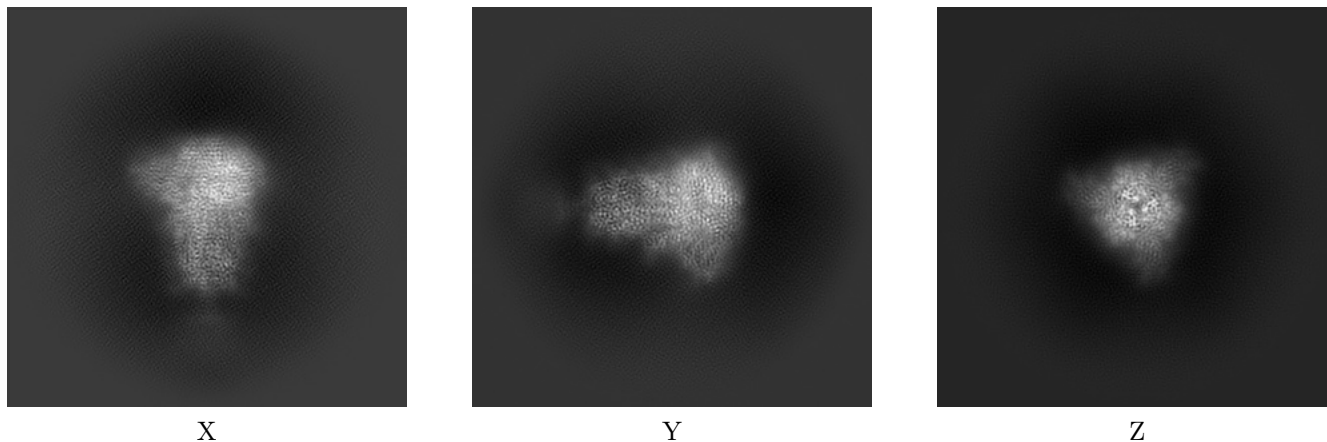
## 6 Map visualisation [i](#)

This section contains visualisations of the EMDB entry EMD-34465. These allow visual inspection of the internal detail of the map and identification of artifacts.

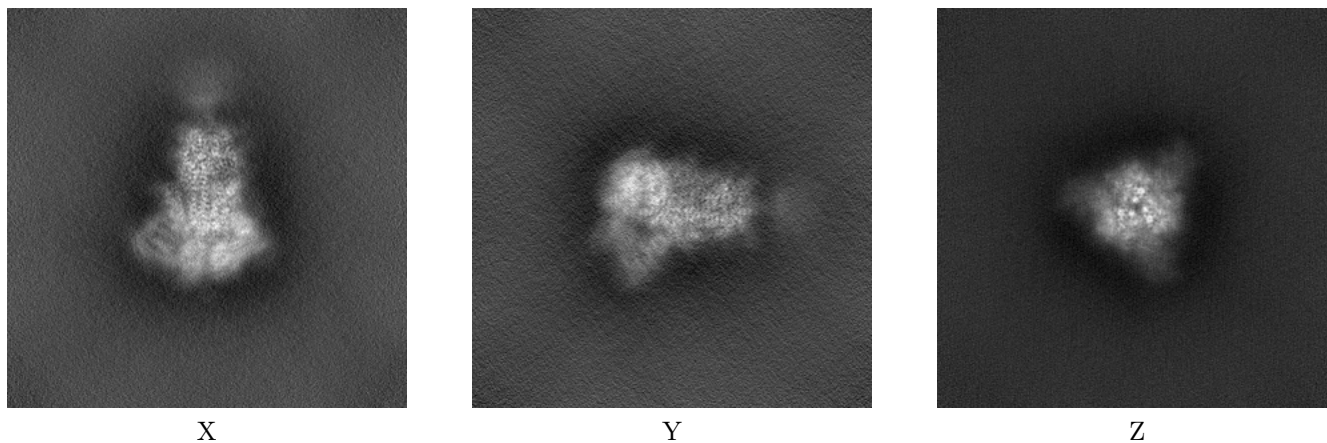
Images derived from a raw map, generated by summing the deposited half-maps, are presented below the corresponding image components of the primary map to allow further visual inspection and comparison with those of the primary map.

### 6.1 Orthogonal projections [i](#)

#### 6.1.1 Primary map



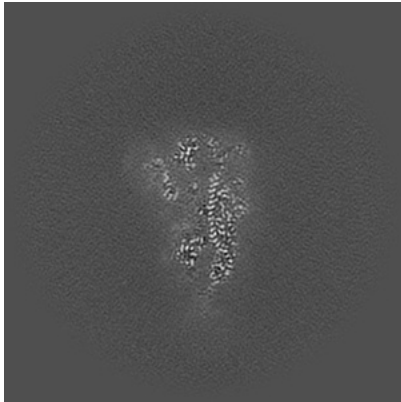
#### 6.1.2 Raw map



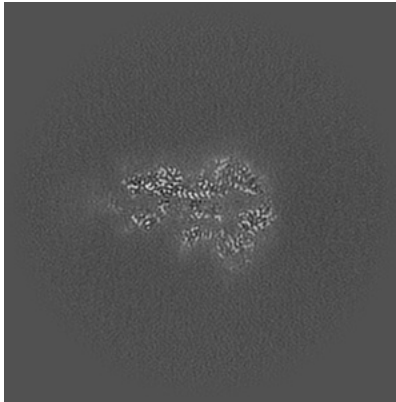
The images above show the map projected in three orthogonal directions.

## 6.2 Central slices [i](#)

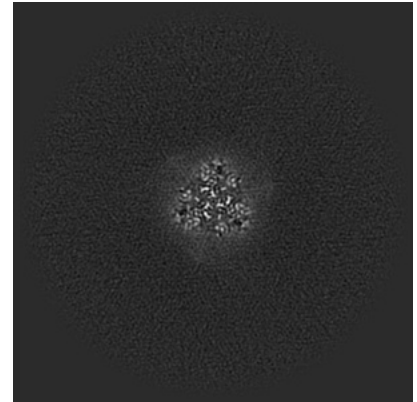
### 6.2.1 Primary map



X Index: 240

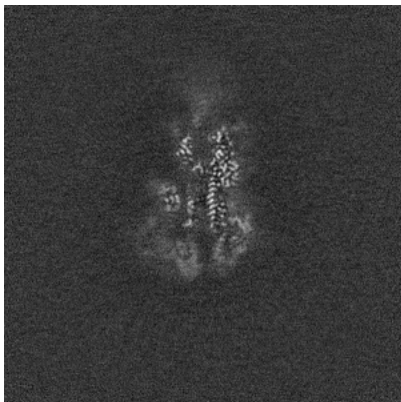


Y Index: 240

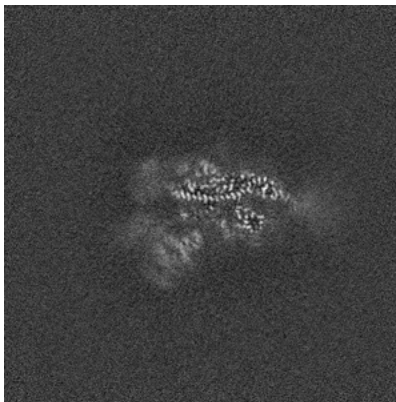


Z Index: 240

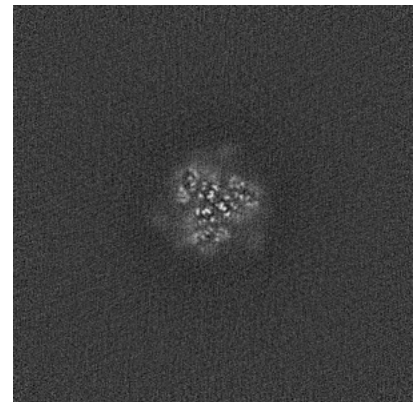
### 6.2.2 Raw map



X Index: 240



Y Index: 240

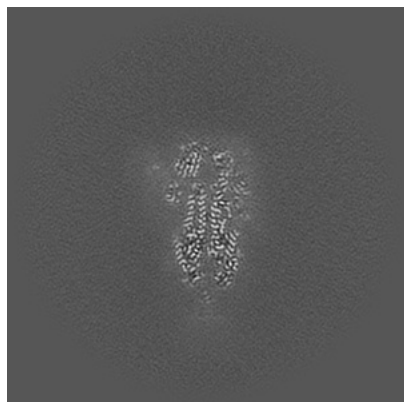


Z Index: 240

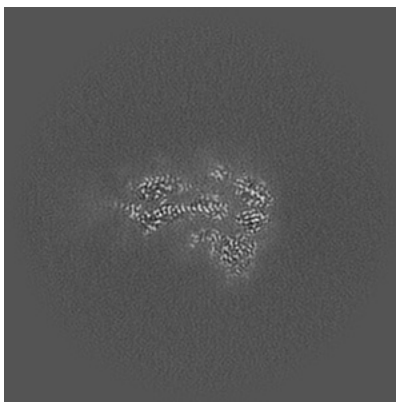
The images above show central slices of the map in three orthogonal directions.

## 6.3 Largest variance slices [i](#)

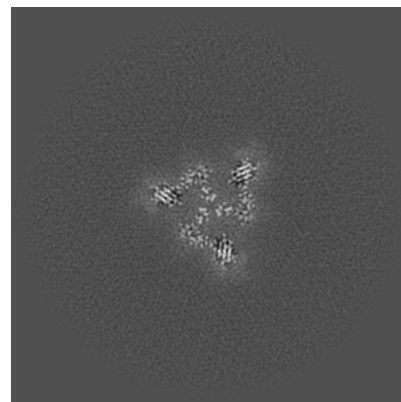
### 6.3.1 Primary map



X Index: 235

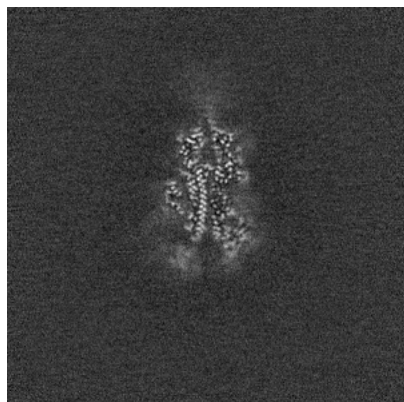


Y Index: 250

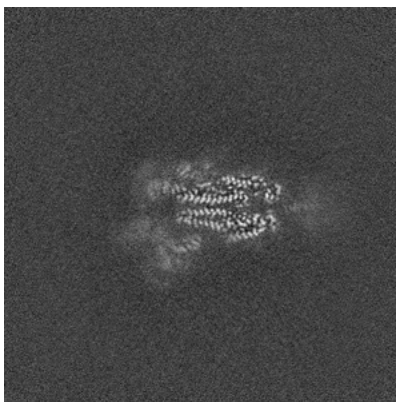


Z Index: 266

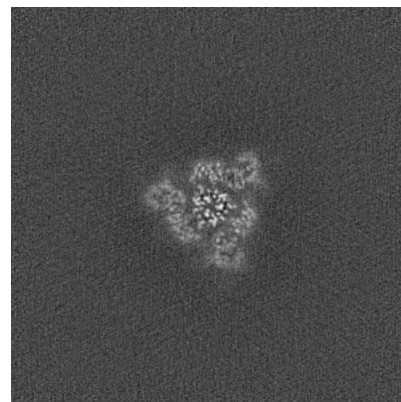
### 6.3.2 Raw map



X Index: 233



Y Index: 236



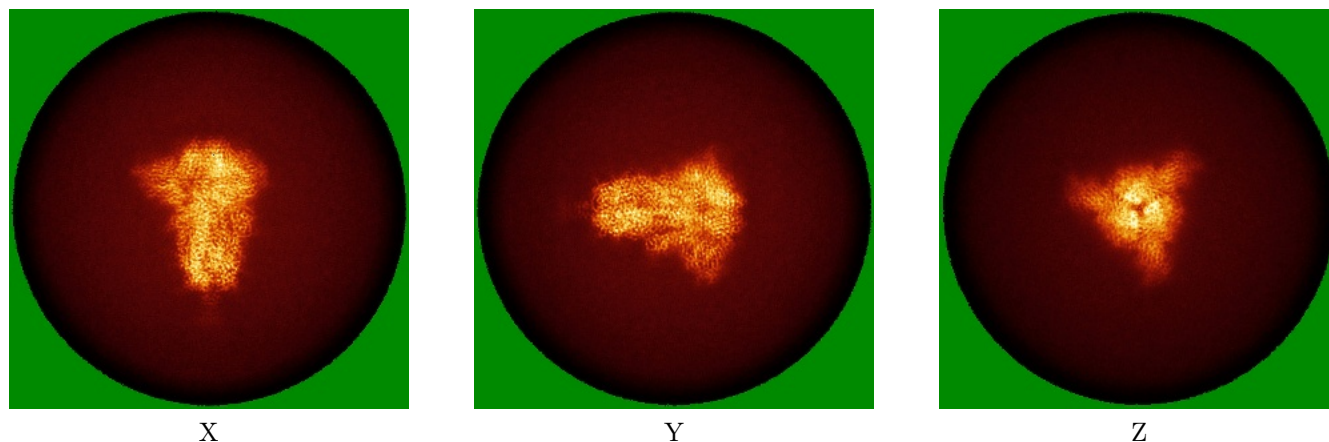
Z Index: 221

The images above show the largest variance slices of the map in three orthogonal directions.

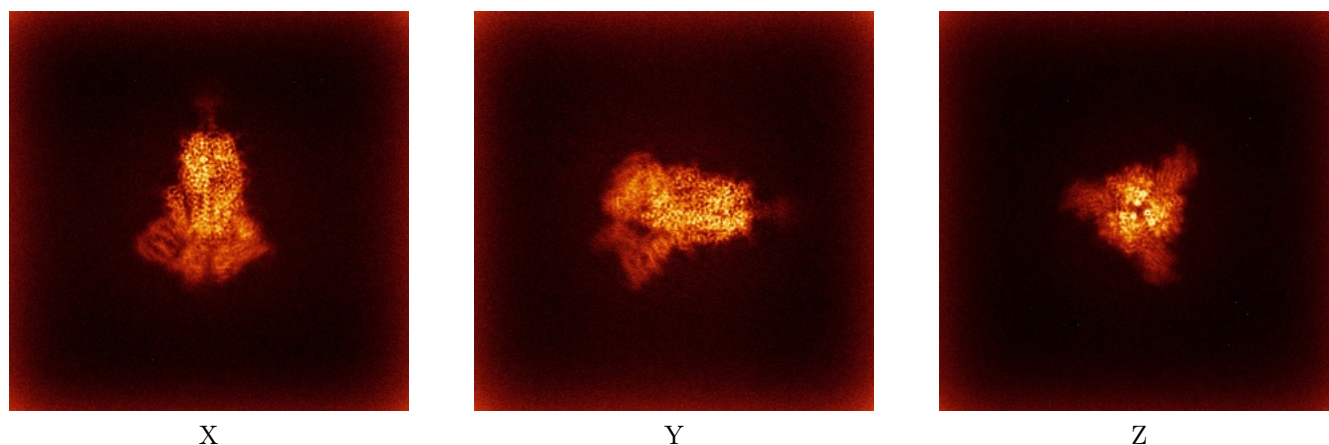


## 6.4 Orthogonal standard-deviation projections (False-color) [i](#)

### 6.4.1 Primary map



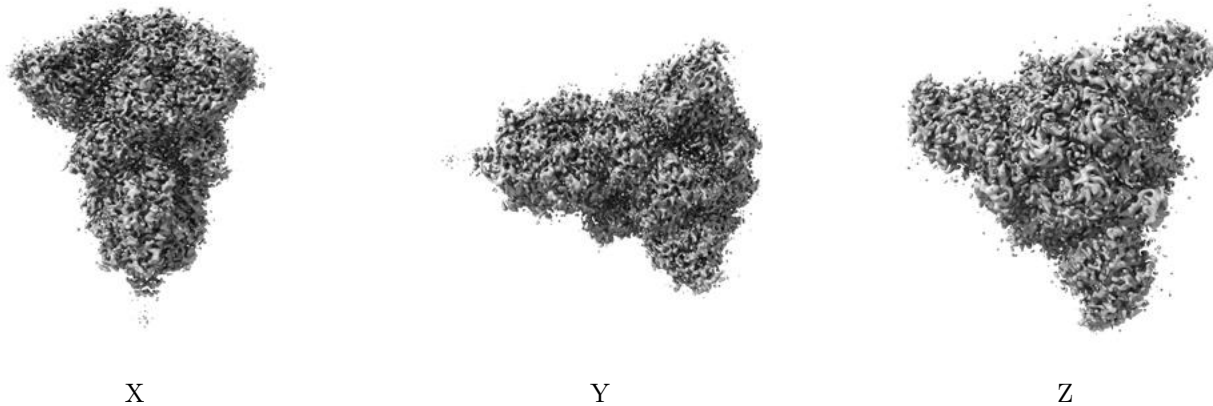
### 6.4.2 Raw map



The images above show the map standard deviation projections with false color in three orthogonal directions. Minimum values are shown in green, max in blue, and dark to light orange shades represent small to large values respectively.

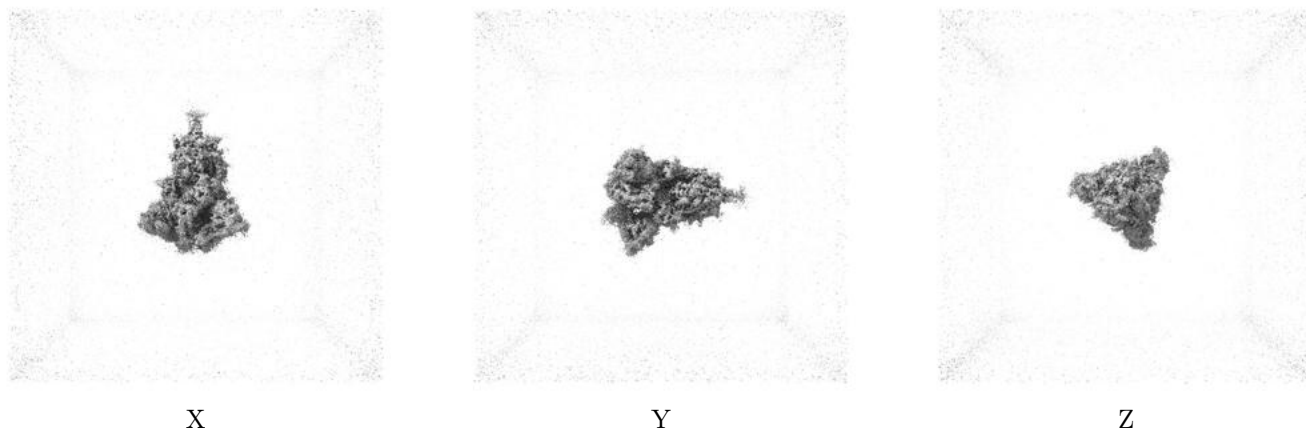
## 6.5 Orthogonal surface views [i](#)

### 6.5.1 Primary map



The images above show the 3D surface view of the map at the recommended contour level 0.6. These images, in conjunction with the slice images, may facilitate assessment of whether an appropriate contour level has been provided.

### 6.5.2 Raw map



These images show the 3D surface of the raw map. The raw map's contour level was selected so that its surface encloses the same volume as the primary map does at its recommended contour level.

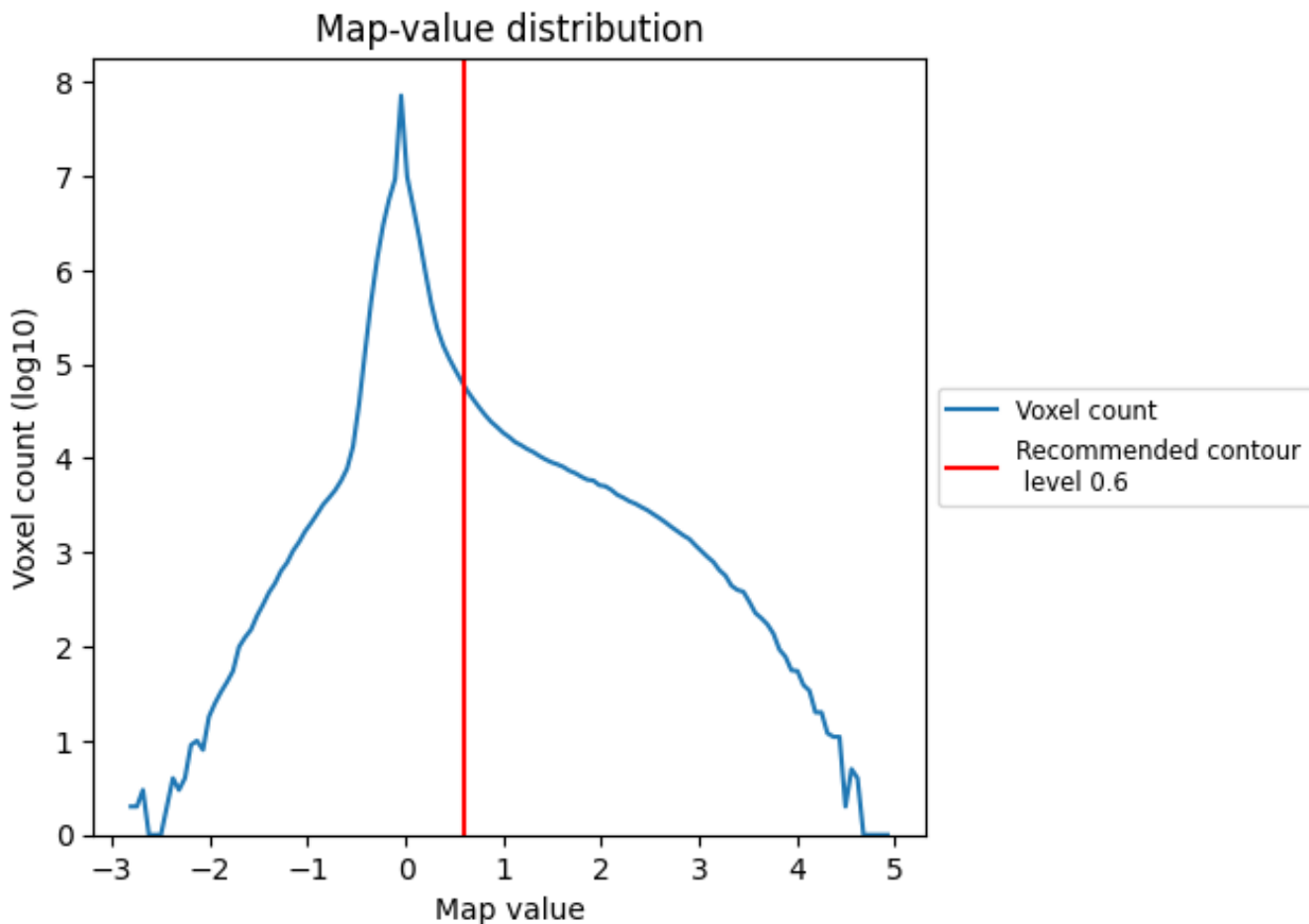
## 6.6 Mask visualisation [i](#)

This section was not generated. No masks/segmentation were deposited.

## 7 Map analysis [i](#)

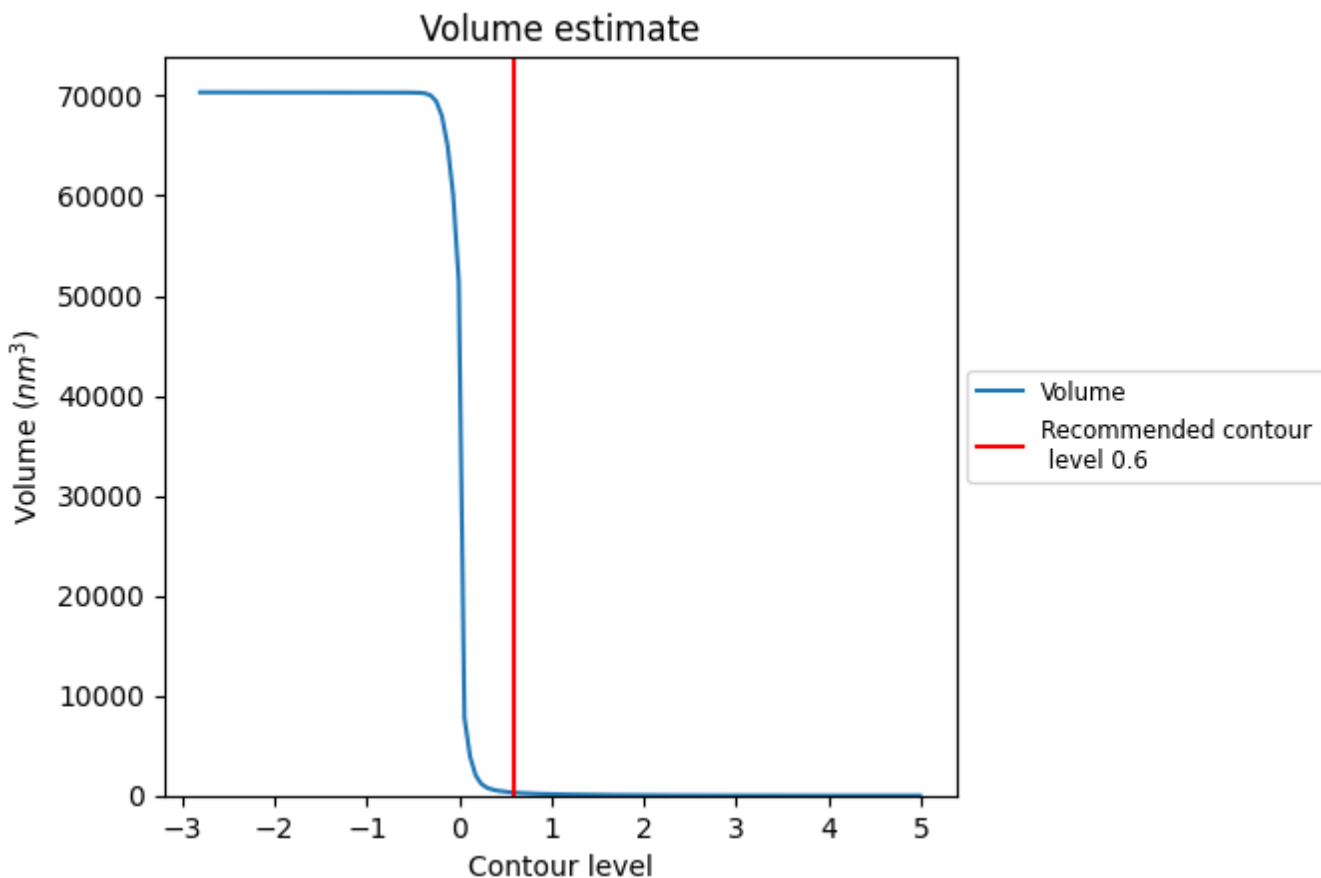
This section contains the results of statistical analysis of the map.

### 7.1 Map-value distribution [i](#)



The map-value distribution is plotted in 128 intervals along the x-axis. The y-axis is logarithmic. A spike in this graph at zero usually indicates that the volume has been masked.

## 7.2 Volume estimate [i](#)

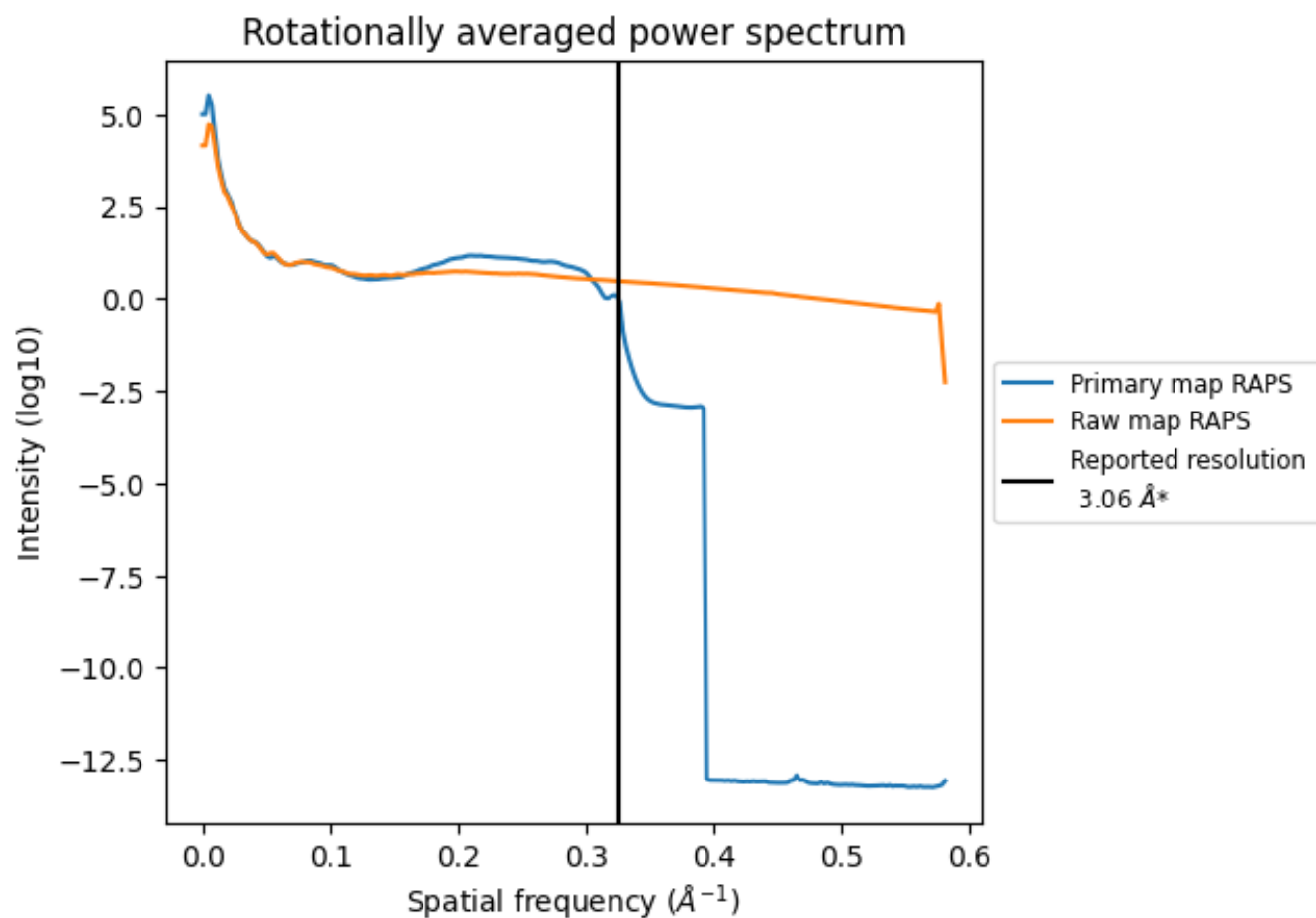


The volume at the recommended contour level is 293 nm<sup>3</sup>; this corresponds to an approximate mass of 265 kDa.

The volume estimate graph shows how the enclosed volume varies with the contour level. The recommended contour level is shown as a vertical line and the intersection between the line and the curve gives the volume of the enclosed surface at the given level.



### 7.3 Rotationally averaged power spectrum [i](#)

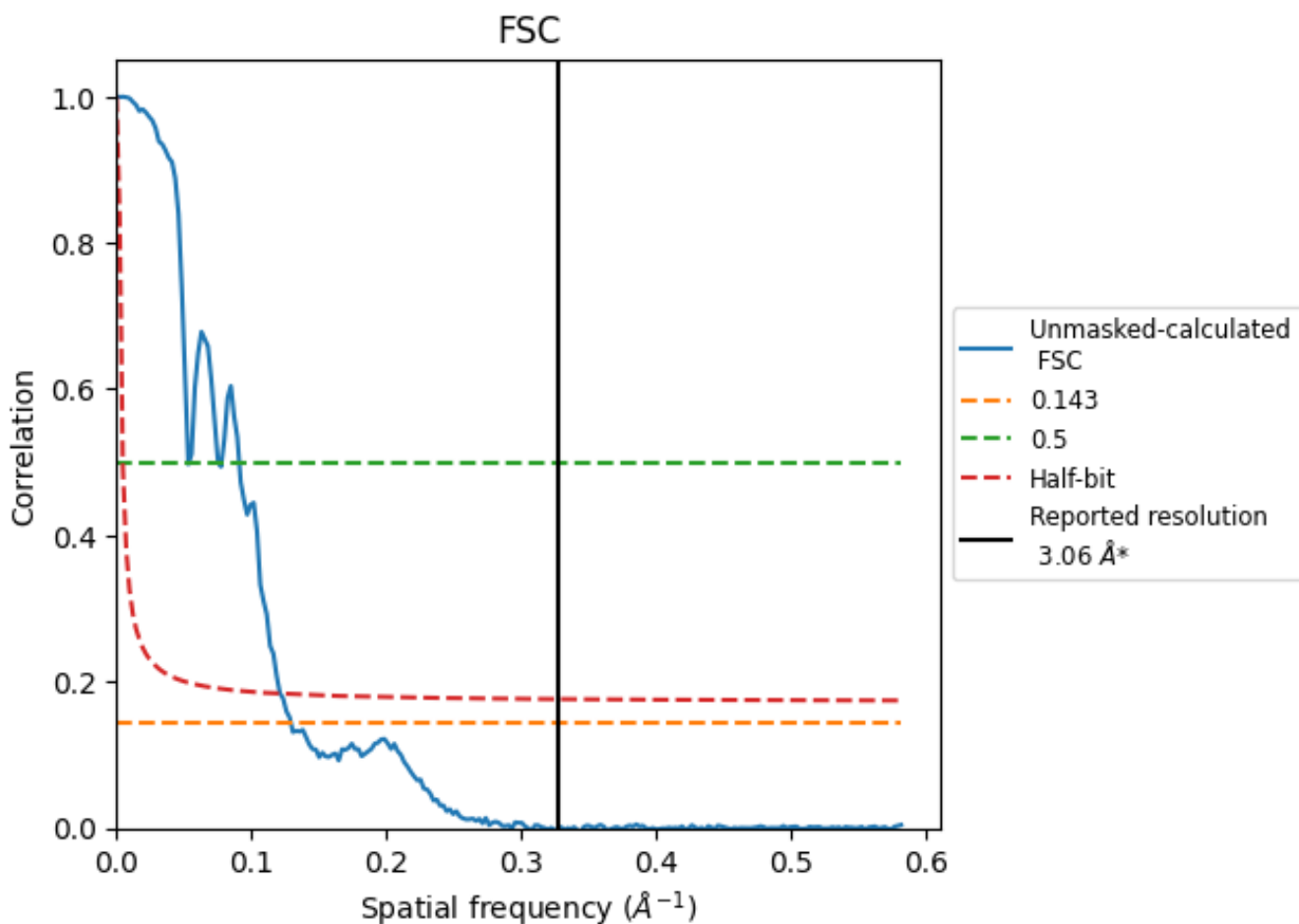


\*Reported resolution corresponds to spatial frequency of 0.327 Å<sup>-1</sup>

## 8 Fourier-Shell correlation [i](#)

Fourier-Shell Correlation (FSC) is the most commonly used method to estimate the resolution of single-particle and subtomogram-averaged maps. The shape of the curve depends on the imposed symmetry, mask and whether or not the two 3D reconstructions used were processed from a common reference. The reported resolution is shown as a black line. A curve is displayed for the half-bit criterion in addition to lines showing the 0.143 gold standard cut-off and 0.5 cut-off.

### 8.1 FSC [i](#)



\*Reported resolution corresponds to spatial frequency of 0.327 Å<sup>-1</sup>

## 8.2 Resolution estimates [i](#)

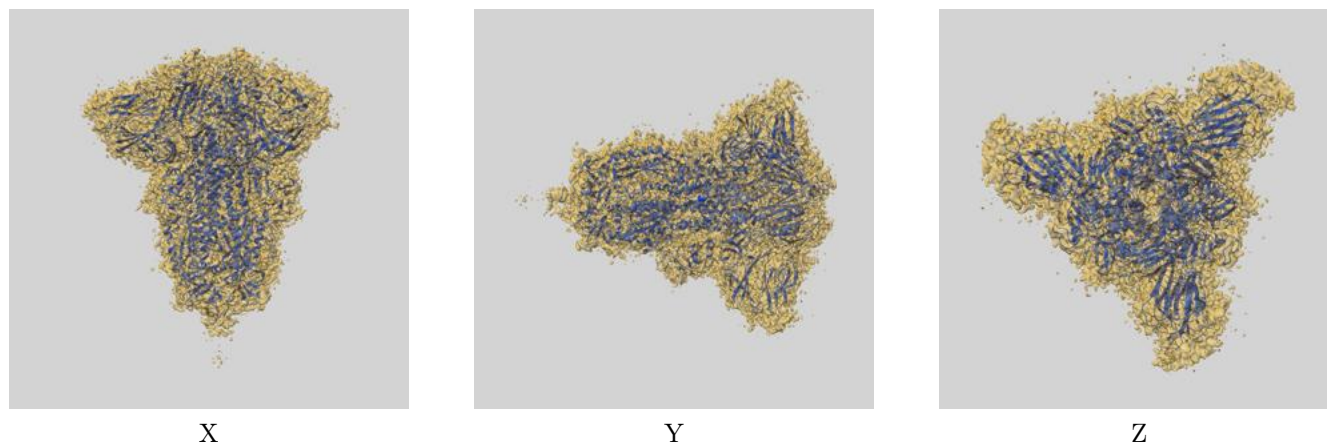
Resolution estimate (Å)	Estimation criterion (FSC cut-off)		
	0.143	0.5	Half-bit
Reported by author	3.06	-	-
Author-provided FSC curve	-	-	-
Unmasked-calculated*	7.73	18.80	8.24

\*Resolution estimate based on FSC curve calculated by comparison of deposited half-maps. The value from deposited half-maps intersecting FSC 0.143 CUT-OFF 7.73 differs from the reported value 3.06 by more than 10 %

## 9 Map-model fit [i](#)

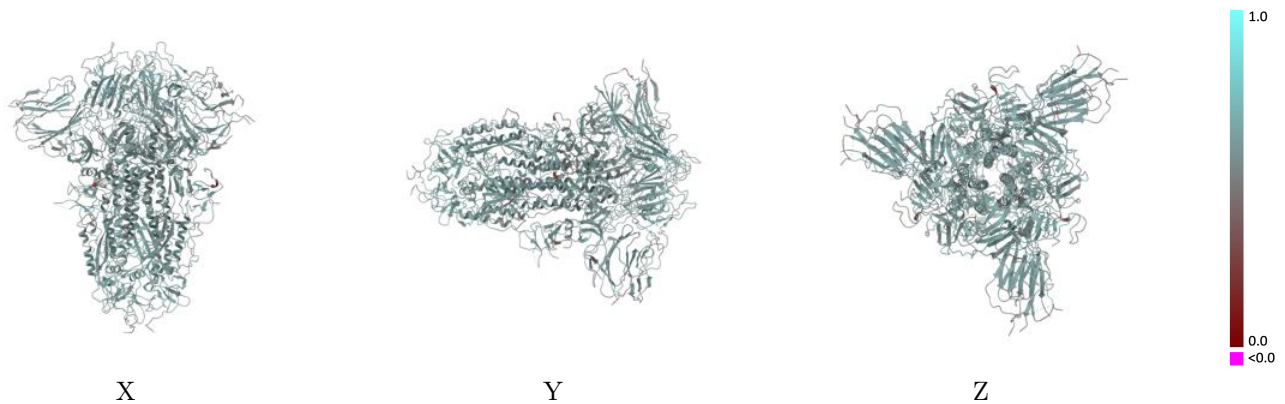
This section contains information regarding the fit between EMDB map EMD-34465 and PDB model 8H3E. Per-residue inclusion information can be found in section 3 on page 9.

### 9.1 Map-model overlay [i](#)



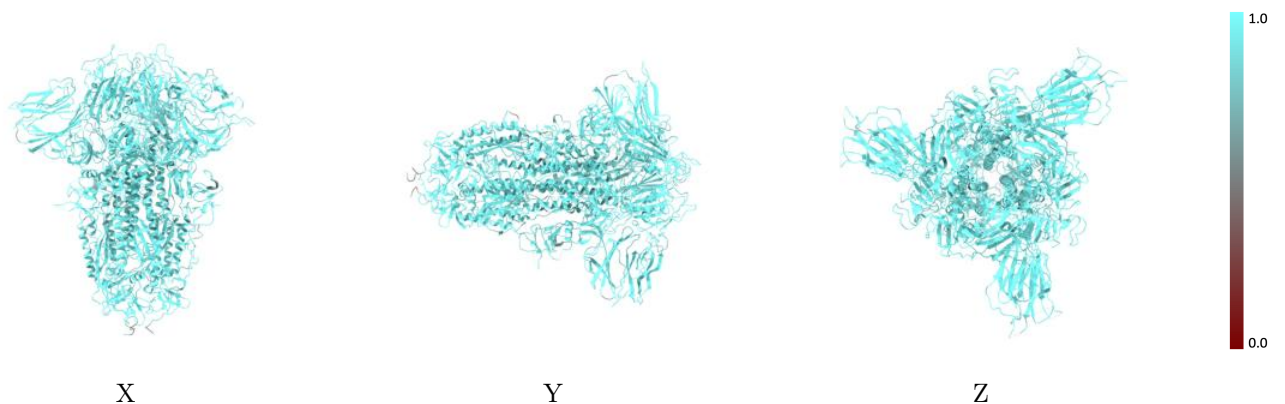
The images above show the 3D surface view of the map at the recommended contour level 0.6 at 50% transparency in yellow overlaid with a ribbon representation of the model coloured in blue. These images allow for the visual assessment of the quality of fit between the atomic model and the map.

## 9.2 Q-score mapped to coordinate model [i](#)



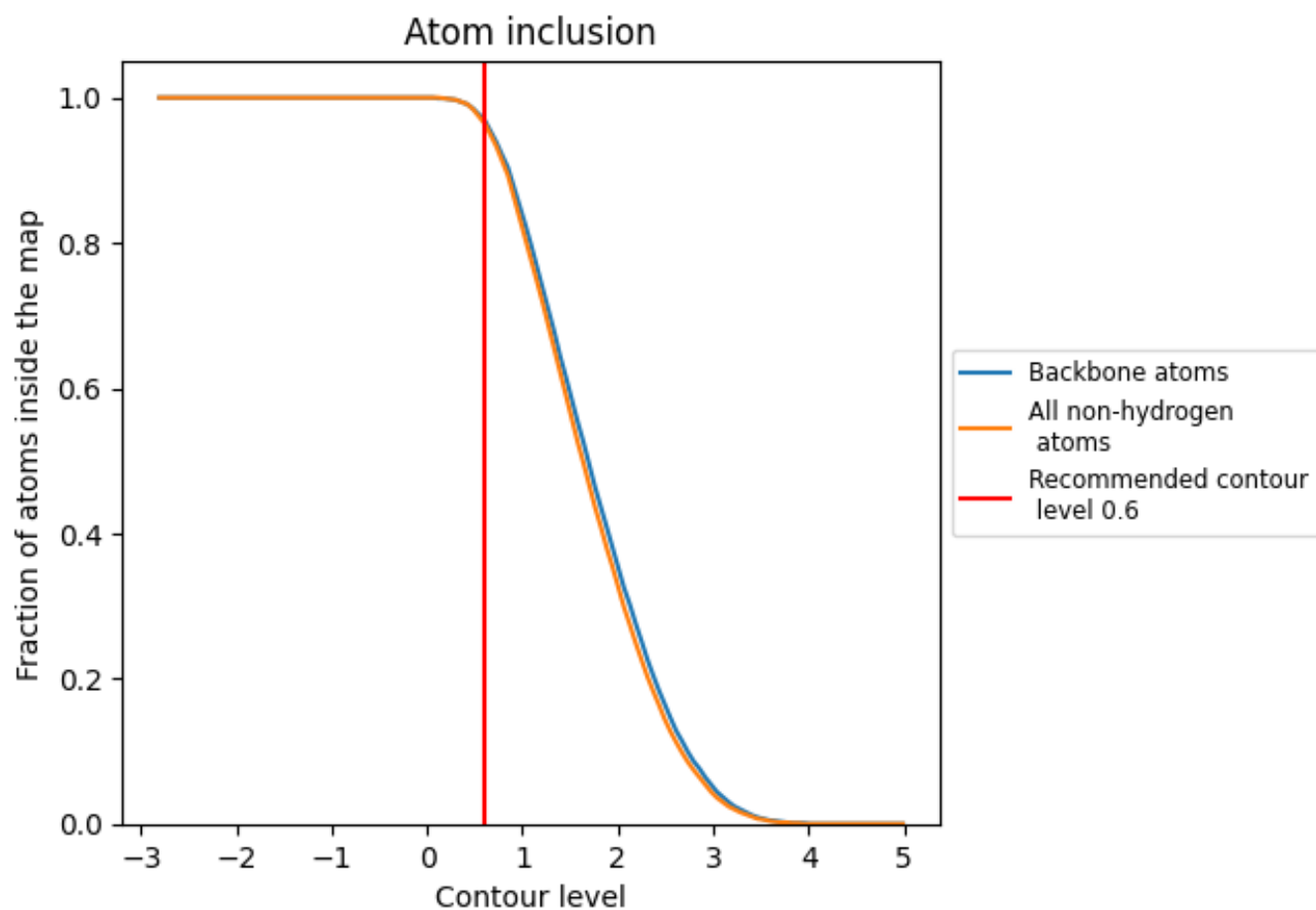
The images above show the model with each residue coloured according to its Q-score. This shows their resolvability in the map with higher Q-score values reflecting better resolvability. Please note: Q-score is calculating the resolvability of atoms, and thus high values are only expected at resolutions at which atoms can be resolved. Low Q-score values may therefore be expected for many entries.

## 9.3 Atom inclusion mapped to coordinate model [i](#)



The images above show the model with each residue coloured according to its atom inclusion. This shows to what extent they are inside the map at the recommended contour level (0.6).



## 9.4 Atom inclusion [i](#)



At the recommended contour level, 97% of all backbone atoms, 96% of all non-hydrogen atoms, are inside the map.

## 9.5 Map-model fit summary

The table lists the average atom inclusion at the recommended contour level (0.6) and Q-score for the entire model and for each chain.

Chain	Atom inclusion	Q-score
All	 0.9650	 0.5700
A	 0.9650	 0.5700
B	 0.9650	 0.5700
C	 0.9650	 0.5690

