



Full wwPDB EM Validation Report ⓘ

Oct 8, 2023 – 12:44 AM JST

PDB ID : 8JD0
EMDB ID : EMD-36171
Title : Cryo-EM structure of mGlu2-mGlu3 heterodimer in presence of NAM563
Authors : Wang, X.; Wang, M.; Xu, T.; Feng, Y.; Han, S.; Lin, S.; Zhao, Q.; Wu, B.
Deposited on : 2023-05-12
Resolution : 3.30 Å (reported)

This is a Full wwPDB EM Validation Report for a publicly released PDB entry.

We welcome your comments at validation@mail.wwpdb.org

A user guide is available at

<https://www.wwpdb.org/validation/2017/EMValidationReportHelp>

with specific help available everywhere you see the ⓘ symbol.

The types of validation reports are described at

<http://www.wwpdb.org/validation/2017/FAQs#types>.

The following versions of software and data (see [references ⓘ](#)) were used in the production of this report:

EMDB validation analysis : **FAILED**
Mogul : 1.8.5 (274361), CSD as541be (2020)
MolProbity : 4.02b-467
buster-report : 1.1.7 (2018)
Percentile statistics : 20191225.v01 (using entries in the PDB archive December 25th 2019)
MapQ : **FAILED**
Ideal geometry (proteins) : Engh & Huber (2001)
Ideal geometry (DNA, RNA) : Parkinson et al. (1996)
Validation Pipeline (wwPDB-VP) : 2.35.1

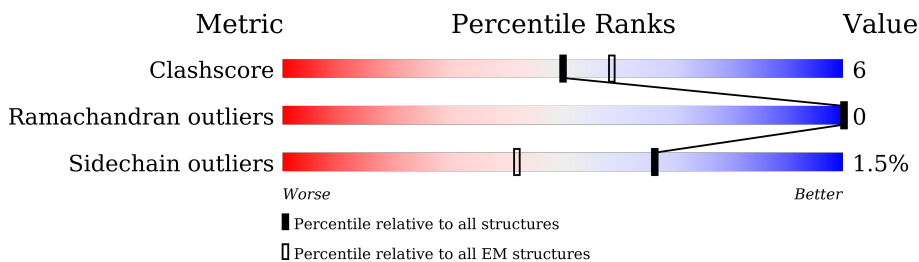
1 Overall quality at a glance

The following experimental techniques were used to determine the structure:

ELECTRON MICROSCOPY

The reported resolution of this entry is 3.30 Å.

Percentile scores (ranging between 0-100) for global validation metrics of the entry are shown in the following graphic. The table shows the number of entries on which the scores are based.



Metric	Whole archive (#Entries)	EM structures (#Entries)
Clashscore	158937	4297
Ramachandran outliers	154571	4023
Sidechain outliers	154315	3826

The table below summarises the geometric issues observed across the polymeric chains and their fit to the map. The red, orange, yellow and green segments of the bar indicate the fraction of residues that contain outliers for ≥ 3 , 2, 1 and 0 types of geometric quality criteria respectively. A grey segment represents the fraction of residues that are not modelled. The numeric value for each fraction is indicated below the corresponding segment, with a dot representing fractions $\leq 5\%$

Mol	Chain	Length	Quality of chain
1	2	993	
2	3	993	

2 Entry composition i

There are 6 unique types of molecules in this entry. The entry contains 11264 atoms, of which 0 are hydrogens and 0 are deuteriums.

In the tables below, the AltConf column contains the number of residues with at least one atom in alternate conformation and the Trace column contains the number of residues modelled with at most 2 atoms.

- Molecule 1 is a protein called Metabotropic glutamate receptor 2,Peptidyl-prolyl cis-trans isomerase FKBP1A.

Mol	Chain	Residues	Atoms					AltConf	Trace
			Total	C	N	O	S		
1	2	766	5377	3398	956	990	33	0	0

There are 32 discrepancies between the modelled and reference sequences:

Chain	Residue	Modelled	Actual	Comment	Reference
2	9	ASP	-	expression tag	UNP Q14416
2	10	TYR	-	expression tag	UNP Q14416
2	11	LYS	-	expression tag	UNP Q14416
2	12	ASP	-	expression tag	UNP Q14416
2	13	ASP	-	expression tag	UNP Q14416
2	14	ASP	-	expression tag	UNP Q14416
2	15	ASP	-	expression tag	UNP Q14416
2	16	GLY	-	expression tag	UNP Q14416
2	17	ALA	-	expression tag	UNP Q14416
2	18	PRO	-	expression tag	UNP Q14416
2	873	LEU	-	linker	UNP Q14416
2	874	GLU	-	linker	UNP Q14416
2	875	VAL	-	linker	UNP Q14416
2	876	LEU	-	linker	UNP Q14416
2	877	PHE	-	linker	UNP Q14416
2	878	GLN	-	linker	UNP Q14416
2	879	GLY	-	linker	UNP Q14416
2	880	PRO	-	linker	UNP Q14416
2	988	PHE	-	expression tag	UNP P62942
2	989	ALA	-	expression tag	UNP P62942
2	990	ALA	-	expression tag	UNP P62942
2	991	ALA	-	expression tag	UNP P62942
2	992	HIS	-	expression tag	UNP P62942
2	993	HIS	-	expression tag	UNP P62942
2	994	HIS	-	expression tag	UNP P62942
2	995	HIS	-	expression tag	UNP P62942
2	996	HIS	-	expression tag	UNP P62942

Continued on next page...

Continued from previous page...

Chain	Residue	Modelled	Actual	Comment	Reference
2	997	HIS	-	expression tag	UNP P62942
2	998	HIS	-	expression tag	UNP P62942
2	999	HIS	-	expression tag	UNP P62942
2	1000	HIS	-	expression tag	UNP P62942
2	1001	HIS	-	expression tag	UNP P62942

- Molecule 2 is a protein called Metabotropic glutamate receptor 3, Serine/threonine-protein kinase mTOR.

Mol	Chain	Residues	Atoms					AltConf	Trace
			Total	C	N	O	S		
2	3	765	5567	3528	963	1041	35	0	0

There are 41 discrepancies between the modelled and reference sequences:

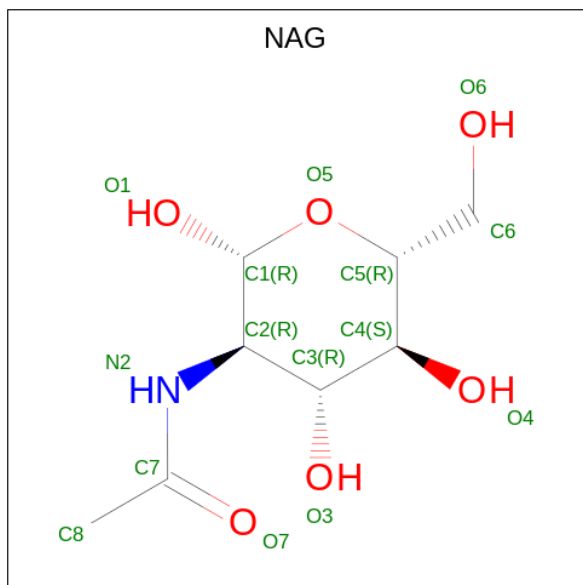
Chain	Residue	Modelled	Actual	Comment	Reference
3	-8	ASP	-	expression tag	UNP Q14832
3	-7	TYR	-	expression tag	UNP Q14832
3	-6	LYS	-	expression tag	UNP Q14832
3	-5	ASP	-	expression tag	UNP Q14832
3	-4	ASP	-	expression tag	UNP Q14832
3	-3	ASP	-	expression tag	UNP Q14832
3	-2	ASP	-	expression tag	UNP Q14832
3	-1	LYS	-	expression tag	UNP Q14832
3	0	GLY	-	expression tag	UNP Q14832
3	1	ALA	-	expression tag	UNP Q14832
3	2	PRO	-	expression tag	UNP Q14832
3	3	TRP	-	expression tag	UNP Q14832
3	4	SER	-	expression tag	UNP Q14832
3	5	HIS	-	expression tag	UNP Q14832
3	6	PRO	-	expression tag	UNP Q14832
3	7	GLN	-	expression tag	UNP Q14832
3	8	PHE	-	expression tag	UNP Q14832
3	9	GLU	-	expression tag	UNP Q14832
3	10	LYS	-	expression tag	UNP Q14832
3	11	GLY	-	expression tag	UNP Q14832
3	12	SER	-	expression tag	UNP Q14832
3	13	GLY	-	expression tag	UNP Q14832
3	14	SER	-	expression tag	UNP Q14832
3	15	TRP	-	expression tag	UNP Q14832
3	16	SER	-	expression tag	UNP Q14832
3	17	HIS	-	expression tag	UNP Q14832

Continued on next page...

Continued from previous page...

Chain	Residue	Modelled	Actual	Comment	Reference
3	18	PRO	-	expression tag	UNP Q14832
3	19	GLN	-	expression tag	UNP Q14832
3	20	PHE	-	expression tag	UNP Q14832
3	21	GLU	-	expression tag	UNP Q14832
3	22	LYS	-	expression tag	UNP Q14832
3	880	LEU	-	linker	UNP Q14832
3	881	GLU	-	linker	UNP Q14832
3	882	VAL	-	linker	UNP Q14832
3	883	LEU	-	linker	UNP Q14832
3	884	PHE	-	linker	UNP Q14832
3	885	GLN	-	linker	UNP Q14832
3	886	GLY	-	linker	UNP Q14832
3	887	PRO	-	linker	UNP Q14832
3	983	GLU	-	expression tag	UNP A0A8V8TRG9
3	984	PHE	-	expression tag	UNP A0A8V8TRG9

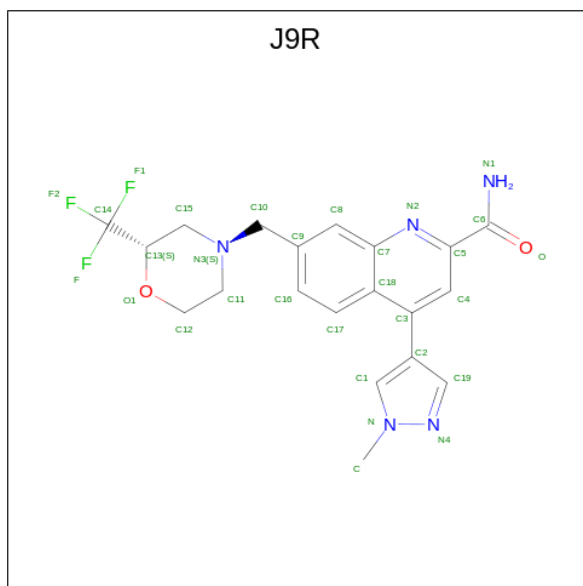
- Molecule 3 is 2-acetamido-2-deoxy-beta-D-glucopyranose (three-letter code: NAG) (formula: $C_8H_{15}NO_6$).



Mol	Chain	Residues	Atoms				AltConf
			Total	C	N	O	
3	2	1	Total	C	N	O	0
			14	8	1	5	
3	3	1	Total	C	N	O	0
			14	8	1	5	

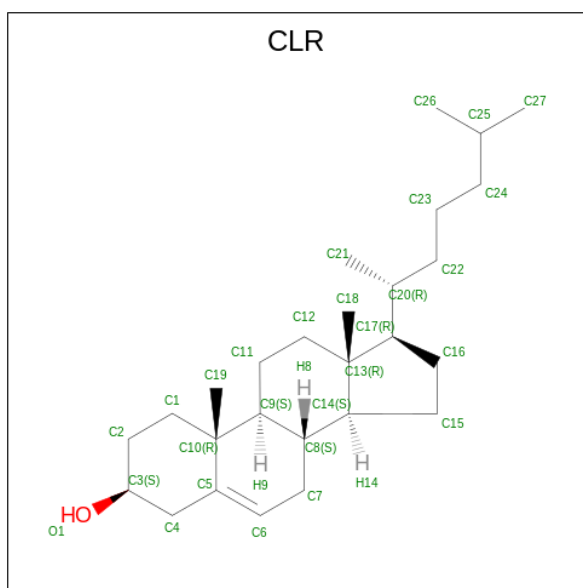
- Molecule 4 is 4-(1-methylpyrazol-4-yl)-7-[[2-{S}]-2-(trifluoromethyl)morpholin-4-yl]methyl]quinoline-2-carboxamide (three-letter code: J9R) (formula: $C_{20}H_{20}F_3N_5O_2$) (labeled as

"Ligand of Interest" by depositor).



Mol	Chain	Residues	Atoms				AltConf	
			Total	C	F	N		O
4	2	1	30	20	3	5	2	0

- Molecule 5 is CHOLESTEROL (three-letter code: CLR) (formula: $C_{27}H_{46}O$).



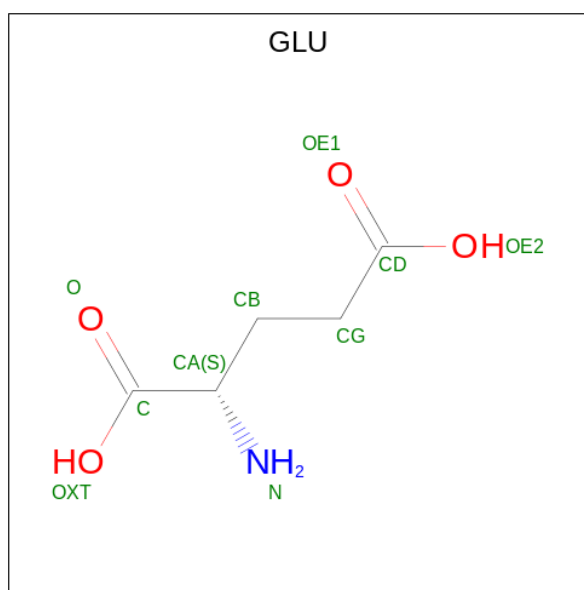
Mol	Chain	Residues	Atoms			AltConf
			Total	C	O	
5	2	1	28	27	1	0
5	2	1	28	27	1	0

Continued on next page...

Continued from previous page...

Mol	Chain	Residues	Atoms			AltConf
5	2	1	Total	C	O	0
			28	27	1	
5	2	1	Total	C	O	0
			28	27	1	
5	3	1	Total	C	O	0
			28	27	1	
5	3	1	Total	C	O	0
			28	27	1	
5	3	1	Total	C	O	0
			28	27	1	
5	3	1	Total	C	O	0
			28	27	1	

- Molecule 6 is GLUTAMIC ACID (three-letter code: GLU) (formula: C₅H₉NO₄) (labeled as "Ligand of Interest" by depositor).



Mol	Chain	Residues	Atoms				AltConf
6	3	1	Total	C	N	O	0
			10	5	1	4	

ARG ILE PHE ASP GLY VAL LYS ASN GLY ALA GLN ARG PRO K681 S684 P685 V701 F712 G713 I727 L728 T752 F756 F770 T774 V798 L815 F828 GLN PRO GLN LYS ASN VAL VAL THR HIS ARG LEU HIS LEU ASN ARG PHE SER VAL SER THR

GLY THR TYR SER GLN SER SER ALA THR TYR VAL PRO THR VAL CYS ASN GLY ARG GLU VAL LEU ASP SER THR SER SER ASN LEU GLU VAL LEU PHE GLN GLY PRO ALA ILE LEU TRP TRP HIS GLU LEU GLU ALA VAL SER ARG LEU TYR PHE GLU

ARG ASN VAL LYS MET PHE GLU VAL LEU PRO LEU HIS ALA MET MET GLU ARG GLY PRO GLN THR LEU LYS GLU THR SER PHE ASN GLN ALA TYR GLY ARG ASP LEU MET GLU ALA GLN TRP CYS ARG LYS TYR MET LYS SER GLY ASN VAL LYS ASP LEU THR GLN ALA TRP

ASP LEU TYR HIS VAL PHE ARG ARG SER LYS GLN GLU PHE

4 Experimental information

Property	Value	Source
EM reconstruction method	SINGLE PARTICLE	Depositor
Imposed symmetry	POINT, Not provided	
Number of particles used	460025	Depositor
Resolution determination method	FSC 0.143 CUT-OFF	Depositor
CTF correction method	NONE	Depositor
Microscope	FEI TITAN KRIOS	Depositor
Voltage (kV)	300	Depositor
Electron dose ($e^-/\text{\AA}^2$)	70	Depositor
Minimum defocus (nm)	800	Depositor
Maximum defocus (nm)	1500	Depositor
Magnification	Not provided	
Image detector	GATAN K3 BIOQUANTUM (6k x 4k)	Depositor

5 Model quality

5.1 Standard geometry

Bond lengths and bond angles in the following residue types are not validated in this section: CLR, NAG, J9R

The Z score for a bond length (or angle) is the number of standard deviations the observed value is removed from the expected value. A bond length (or angle) with $|Z| > 5$ is considered an outlier worth inspection. RMSZ is the root-mean-square of all Z scores of the bond lengths (or angles).

Mol	Chain	Bond lengths		Bond angles	
		RMSZ	# Z >5	RMSZ	# Z >5
1	2	0.24	0/5497	0.46	0/7521
2	3	0.24	0/5684	0.45	0/7751
All	All	0.24	0/11181	0.46	0/15272

There are no bond length outliers.

There are no bond angle outliers.

There are no chirality outliers.

There are no planarity outliers.

5.2 Too-close contacts

In the following table, the Non-H and H(model) columns list the number of non-hydrogen atoms and hydrogen atoms in the chain respectively. The H(added) column lists the number of hydrogen atoms added and optimized by MolProbity. The Clashes column lists the number of clashes within the asymmetric unit, whereas Symm-Clashes lists symmetry-related clashes.

Mol	Chain	Non-H	H(model)	H(added)	Clashes	Symm-Clashes
1	2	5377	0	4783	57	0
2	3	5567	0	5073	66	0
3	2	14	0	13	0	0
3	3	14	0	13	0	0
4	2	30	0	0	1	0
5	2	112	0	184	8	0
5	3	140	0	230	6	0
6	3	10	0	5	2	0
All	All	11264	0	10301	129	0

The all-atom clashscore is defined as the number of clashes found per 1000 atoms (including hydrogen atoms). The all-atom clashscore for this structure is 6.

All (129) close contacts within the same asymmetric unit are listed below, sorted by their clash magnitude.

Atom-1	Atom-2	Interatomic distance (Å)	Clash overlap (Å)
1:2:685:ALA:HB2	5:2:1106:CLR:H3	1.67	0.75
1:2:698:LEU:HD22	5:2:1103:CLR:H152	1.70	0.73
1:2:634:LEU:HD21	5:2:1104:CLR:H71	1.77	0.67
1:2:293:ALA:HB3	1:2:316:THR:HA	1.76	0.67
5:2:1104:CLR:H261	5:2:1105:CLR:H271	1.78	0.65
1:2:297:TRP:HE1	1:2:468:TYR:HH	1.45	0.64
2:3:227:ILE:O	2:3:231:GLU:HG2	1.98	0.63
2:3:102:ASP:HB2	2:3:156:GLN:HG3	1.81	0.62
1:2:139:VAL:HG12	1:2:141:GLY:H	1.65	0.61
2:3:214:SER:HB2	2:3:272:VAL:HG12	1.81	0.61
2:3:63:ASP:HA	2:3:67:GLN:HG3	1.80	0.61
1:2:96:THR:O	1:2:100:GLU:HG2	2.01	0.60
1:2:79:LEU:HD23	1:2:82:VAL:HB	1.85	0.59
2:3:48:ASN:HB3	2:3:57:CYS:HB2	1.86	0.58
2:3:35:ILE:HD11	2:3:347:ARG:HD2	1.85	0.57
2:3:534:CYS:SG	2:3:535:GLU:N	2.72	0.56
1:2:421:ASP:O	1:2:425:ASN:ND2	2.36	0.56
1:2:59:ILE:HD13	1:2:348:PHE:HB2	1.87	0.56
1:2:419:TYR:HD2	1:2:420:LYS:HD2	1.70	0.56
2:3:153:VAL:O	2:3:157:VAL:HG23	2.06	0.55
1:2:276:ARG:HB2	1:2:303:VAL:HA	1.88	0.55
1:2:32:LEU:HD13	1:2:392:LEU:HD13	1.87	0.55
1:2:81:GLY:O	1:2:405:ARG:NH1	2.40	0.54
1:2:395:MET:HG3	1:2:418:LEU:HD13	1.89	0.54
5:3:1003:CLR:H17	5:3:1004:CLR:H161	1.90	0.53
1:2:328:ALA:O	1:2:332:GLN:HG2	2.08	0.53
1:2:186:PRO:HG3	1:2:451:GLY:HA3	1.90	0.53
2:3:622:VAL:HG21	2:3:815:LEU:HB2	1.91	0.53
1:2:79:LEU:HD22	1:2:84:LEU:HD11	1.89	0.52
2:3:202:ALA:HB1	2:3:237:ARG:HD2	1.91	0.52
5:3:1003:CLR:H161	5:3:1004:CLR:H221	1.91	0.52
2:3:86:LEU:HG	2:3:405:HIS:HB2	1.92	0.51
2:3:538:GLU:HB3	2:3:548:ASP:HA	1.92	0.51
2:3:68:ARG:NH2	2:3:387:GLU:OE2	2.44	0.51
5:2:1103:CLR:H272	5:2:1106:CLR:H242	1.93	0.51
2:3:40:VAL:HG21	2:3:140:LEU:HG	1.94	0.50
2:3:441:THR:OG1	2:3:448:LYS:NZ	2.44	0.50
5:2:1104:CLR:H152	2:3:701:VAL:HG11	1.93	0.50
1:2:41:HIS:HB2	1:2:92:CYS:HB3	1.93	0.50
1:2:225:GLU:O	1:2:229:ARG:HG2	2.11	0.50

Continued on next page...

Continued from previous page...

Atom-1	Atom-2	Interatomic distance (Å)	Clash overlap (Å)
2:3:68:ARG:NH1	2:3:149:SER:OG	2.45	0.50
1:2:342:ASN:HB3	1:2:345:PHE:HB2	1.94	0.49
2:3:199:LYS:HA	2:3:233:GLU:HG2	1.94	0.49
1:2:72:ILE:HG12	1:2:78:LEU:HD23	1.94	0.49
2:3:285:ILE:HG21	2:3:310:ILE:HG22	1.95	0.49
1:2:175:LYS:NZ	1:2:181:PHE:O	2.46	0.49
2:3:616:TYR:HE2	5:3:1007:CLR:H9	1.78	0.48
2:3:442:ALA:HB3	2:3:445:ASN:HB2	1.95	0.48
2:3:287:ALA:HA	2:3:290:ARG:HE	1.78	0.48
2:3:85:LEU:HD13	2:3:402:HIS:HD2	1.77	0.48
2:3:196:TYR:HB2	2:3:466:TYR:HE2	1.78	0.48
1:2:95:ASP:HB3	1:2:150:GLN:HG3	1.95	0.47
5:2:1106:CLR:H272	5:2:1106:CLR:H161	1.96	0.47
2:3:149:SER:OG	6:3:1001:GLU:OE2	2.33	0.47
2:3:186:TYR:HE1	2:3:428:LYS:HA	1.80	0.47
2:3:348:ASN:HB3	2:3:351:PHE:HB2	1.97	0.46
1:2:204:TRP:HE1	1:2:496:PRO:HA	1.80	0.46
1:2:32:LEU:HD22	1:2:137:THR:HG21	1.96	0.46
2:3:433:ASP:OD1	2:3:434:TYR:N	2.48	0.46
5:3:1003:CLR:H211	5:3:1003:CLR:H241	1.97	0.46
1:2:180:TYR:HE1	1:2:416:ARG:HA	1.81	0.46
1:2:512:VAL:N	1:2:521:LEU:O	2.49	0.46
2:3:200:ALA:O	2:3:204:ILE:HG22	2.17	0.45
2:3:490:LEU:HD21	2:3:492:LEU:HD12	1.99	0.45
2:3:598:PHE:CE1	5:3:1007:CLR:H112	2.51	0.45
1:2:285:LEU:HD22	1:2:287:ALA:HB2	1.97	0.45
2:3:192:PRO:HG3	2:3:464:GLY:HA2	1.97	0.45
2:3:161:LEU:HD22	2:3:166:ILE:HD12	1.99	0.45
2:3:324:GLU:O	2:3:467:ASN:N	2.49	0.45
2:3:547:MET:N	2:3:547:MET:SD	2.90	0.45
2:3:203:GLU:OE1	2:3:486:TRP:NE1	2.47	0.45
1:2:395:MET:HG2	1:2:422:PHE:CD2	2.52	0.45
1:2:304:VAL:HG11	1:2:458:TYR:HE1	1.82	0.44
1:2:640:GLY:HA2	4:2:1102:J9R:O	2.17	0.44
2:3:85:LEU:HD13	2:3:402:HIS:CD2	2.52	0.44
1:2:591:ARG:HD3	1:2:591:ARG:HA	1.73	0.44
1:2:49:ASP:OD1	1:2:49:ASP:N	2.50	0.44
1:2:221:ILE:HA	1:2:224:PHE:HB3	1.98	0.44
2:3:192:PRO:HD2	2:3:325:LEU:HD21	1.99	0.44
2:3:583:ILE:O	2:3:587:GLY:N	2.40	0.44
1:2:146:ASP:OD1	1:2:146:ASP:N	2.40	0.44

Continued on next page...

Continued from previous page...

Atom-1	Atom-2	Interatomic distance (Å)	Clash overlap (Å)
1:2:199:LEU:HD23	1:2:204:TRP:HE3	1.83	0.44
2:3:684:SER:OG	2:3:685:PRO:HD3	2.18	0.44
1:2:172:LEU:HB2	1:2:183:ARG:HH21	1.83	0.43
2:3:212:TYR:O	2:3:506:THR:OG1	2.28	0.43
2:3:272:VAL:O	2:3:298:VAL:N	2.50	0.43
2:3:712:PRO:HB3	2:3:727:ILE:HG22	1.99	0.43
2:3:325:LEU:HD13	2:3:389:LYS:HE3	2.01	0.43
2:3:67:GLN:HE22	2:3:384:TYR:HE1	1.66	0.43
1:2:510:LYS:H	1:2:522:CYS:HB2	1.83	0.43
2:3:408:GLN:HE21	2:3:408:GLN:HB3	1.64	0.43
2:3:151:SER:OG	6:3:1001:GLU:O	2.30	0.43
2:3:106:LEU:HG	2:3:156:GLN:HB3	1.99	0.43
1:2:429:ASP:HB3	1:2:433:ARG:HH21	1.84	0.43
2:3:66:ILE:HG13	2:3:354:PHE:HB2	2.01	0.43
2:3:62:GLU:OE1	2:3:357:GLN:NE2	2.52	0.42
1:2:223:ALA:HA	1:2:226:LEU:HB2	2.00	0.42
2:3:181:LYS:NZ	2:3:431:TYR:OH	2.50	0.42
2:3:324:GLU:OE2	2:3:389:LYS:NZ	2.49	0.42
2:3:197:GLN:OE1	2:3:301:ASP:N	2.51	0.42
1:2:285:LEU:O	1:2:285:LEU:HD23	2.19	0.42
2:3:511:ASP:N	2:3:511:ASP:OD1	2.46	0.42
1:2:637:LEU:HD21	5:2:1104:CLR:H213	2.00	0.42
2:3:525:ASP:OD1	2:3:525:ASP:N	2.53	0.42
1:2:400:CYS:HB3	1:2:407:CYS:HB3	1.81	0.41
1:2:105:PHE:HD1	1:2:136:ILE:HG13	1.85	0.41
1:2:250:PHE:HA	1:2:253:VAL:HG12	2.02	0.41
1:2:453:TYR:HD2	1:2:474:TRP:HD1	1.67	0.41
2:3:576:TRP:NE1	2:3:798:VAL:HG13	2.35	0.41
1:2:375:GLU:HB3	1:2:378:ILE:HG12	2.03	0.41
2:3:752:THR:O	2:3:756:PHE:HB2	2.20	0.41
1:2:509:VAL:HA	1:2:522:CYS:HB2	2.01	0.41
2:3:227:ILE:HD12	2:3:227:ILE:HA	1.93	0.41
1:2:684:LEU:HD13	5:3:1006:CLR:H17	2.03	0.41
2:3:69:LEU:HG	2:3:95:ILE:HG21	2.02	0.41
1:2:61:ARG:NE	1:2:375:GLU:OE1	2.39	0.41
1:2:615:LEU:HD12	1:2:615:LEU:HA	1.92	0.41
1:2:697:TRP:HA	1:2:700:VAL:HG22	2.03	0.41
2:3:48:ASN:ND2	2:3:97:ASP:OD2	2.50	0.41
2:3:96:LEU:HD22	2:3:108:GLN:HG2	2.03	0.41
2:3:277:ARG:NH2	2:3:279:ASP:OD1	2.43	0.41
1:2:334:LEU:HD23	1:2:334:LEU:HA	1.97	0.40

Continued on next page...

Continued from previous page...

Atom-1	Atom-2	Interatomic distance (Å)	Clash overlap (Å)
2:3:713:GLY:H	2:3:728:LEU:H	1.69	0.40
2:3:770:PHE:O	2:3:774:THR:HG23	2.21	0.40
1:2:455:ILE:HG21	1:2:480:LEU:HD21	2.02	0.40
2:3:39:LEU:HD13	2:3:404:LEU:HD23	2.02	0.40
1:2:220:GLY:HA3	1:2:269:PHE:CE2	2.57	0.40
2:3:140:LEU:HD12	2:3:140:LEU:HA	1.98	0.40
1:2:485:ILE:HB	1:2:488:ALA:HB3	2.04	0.40

There are no symmetry-related clashes.

5.3 Torsion angles [\(i\)](#)

5.3.1 Protein backbone [\(i\)](#)

In the following table, the Percentiles column shows the percent Ramachandran outliers of the chain as a percentile score with respect to all PDB entries followed by that with respect to all EM entries.

The Analysed column shows the number of residues for which the backbone conformation was analysed, and the total number of residues.

Mol	Chain	Analysed	Favoured	Allowed	Outliers	Percentiles	
1	2	760/993 (76%)	721 (95%)	39 (5%)	0	100	100
2	3	759/993 (76%)	733 (97%)	26 (3%)	0	100	100
All	All	1519/1986 (76%)	1454 (96%)	65 (4%)	0	100	100

There are no Ramachandran outliers to report.

5.3.2 Protein sidechains [\(i\)](#)

In the following table, the Percentiles column shows the percent sidechain outliers of the chain as a percentile score with respect to all PDB entries followed by that with respect to all EM entries.

The Analysed column shows the number of residues for which the sidechain conformation was analysed, and the total number of residues.

Mol	Chain	Analysed	Rotameric	Outliers	Percentiles	
1	2	471/813 (58%)	464 (98%)	7 (2%)	65	81

Continued on next page...

Continued from previous page...

Mol	Chain	Analysed	Rotameric	Outliers	Percentiles	
2	3	533/867 (62%)	526 (99%)	7 (1%)	69	82
All	All	1004/1680 (60%)	990 (99%)	14 (1%)	66	82

All (14) residues with a non-rotameric sidechain are listed below:

Mol	Chain	Res	Type
1	2	67	PHE
1	2	269	PHE
1	2	531	ARG
1	2	545	TRP
1	2	643	PHE
1	2	697	TRP
1	2	735	ASN
2	3	55	GLU
2	3	249	ARG
2	3	275	PHE
2	3	279	ASP
2	3	408	GLN
2	3	499	TRP
2	3	547	MET

Sometimes sidechains can be flipped to improve hydrogen bonding and reduce clashes. There are no such sidechains identified.

5.3.3 RNA [i](#)

There are no RNA molecules in this entry.

5.4 Non-standard residues in protein, DNA, RNA chains [i](#)

There are no non-standard protein/DNA/RNA residues in this entry.

5.5 Carbohydrates [i](#)

There are no monosaccharides in this entry.

5.6 Ligand geometry [i](#)

13 ligands are modelled in this entry.

In the following table, the Counts columns list the number of bonds (or angles) for which Mogul statistics could be retrieved, the number of bonds (or angles) that are observed in the model and the number of bonds (or angles) that are defined in the Chemical Component Dictionary. The Link column lists molecule types, if any, to which the group is linked. The Z score for a bond length (or angle) is the number of standard deviations the observed value is removed from the expected value. A bond length (or angle) with $|Z| > 2$ is considered an outlier worth inspection. RMSZ is the root-mean-square of all Z scores of the bond lengths (or angles).

Mol	Type	Chain	Res	Link	Bond lengths			Bond angles		
					Counts	RMSZ	# Z > 2	Counts	RMSZ	# Z > 2
3	NAG	2	1101	1	14,14,15	0.21	0	17,19,21	0.41	0
5	CLR	2	1106	-	31,31,31	0.27	0	48,48,48	0.49	0
5	CLR	2	1103	-	31,31,31	0.26	0	48,48,48	0.38	0
3	NAG	3	1002	2	14,14,15	0.20	0	17,19,21	0.42	0
6	GLU	3	1001	-	8,9,9	1.03	0	10,11,11	1.19	0
5	CLR	2	1104	-	31,31,31	0.29	0	48,48,48	0.43	0
5	CLR	3	1007	-	31,31,31	0.29	0	48,48,48	0.38	0
4	J9R	2	1102	-	30,33,33	2.99	10 (33%)	40,49,49	1.49	5 (12%)
5	CLR	3	1006	-	31,31,31	0.28	0	48,48,48	0.44	0
5	CLR	2	1105	-	31,31,31	0.29	0	48,48,48	0.40	0
5	CLR	3	1004	-	31,31,31	0.28	0	48,48,48	0.37	0
5	CLR	3	1005	-	31,31,31	0.27	0	48,48,48	0.37	0
5	CLR	3	1003	-	31,31,31	0.27	0	48,48,48	0.40	0

In the following table, the Chirals column lists the number of chiral outliers, the number of chiral centers analysed, the number of these observed in the model and the number defined in the Chemical Component Dictionary. Similar counts are reported in the Torsion and Rings columns. '-' means no outliers of that kind were identified.

Mol	Type	Chain	Res	Link	Chirals	Torsions	Rings
3	NAG	2	1101	1	-	2/6/23/26	0/1/1/1
5	CLR	2	1106	-	-	5/10/68/68	0/4/4/4
5	CLR	2	1103	-	-	3/10/68/68	0/4/4/4
3	NAG	3	1002	2	-	2/6/23/26	0/1/1/1
6	GLU	3	1001	-	-	4/9/9/9	-
5	CLR	2	1104	-	-	0/10/68/68	0/4/4/4
5	CLR	3	1007	-	-	0/10/68/68	0/4/4/4
4	J9R	2	1102	-	-	8/18/28/28	0/4/4/4
5	CLR	3	1006	-	-	0/10/68/68	0/4/4/4
5	CLR	2	1105	-	-	0/10/68/68	0/4/4/4
5	CLR	3	1004	-	-	1/10/68/68	0/4/4/4
5	CLR	3	1005	-	-	0/10/68/68	0/4/4/4
5	CLR	3	1003	-	-	1/10/68/68	0/4/4/4

All (10) bond length outliers are listed below:

Mol	Chain	Res	Type	Atoms	Z	Observed(Å)	Ideal(Å)
4	2	1102	J9R	C10-N3	-10.84	1.26	1.47
4	2	1102	J9R	C6-N1	6.61	1.45	1.33
4	2	1102	J9R	C15-N3	-4.93	1.38	1.46
4	2	1102	J9R	C1-N	-4.10	1.31	1.35
4	2	1102	J9R	C18-C7	-3.40	1.36	1.42
4	2	1102	J9R	C11-N3	-2.91	1.38	1.46
4	2	1102	J9R	O1-C13	-2.82	1.39	1.43
4	2	1102	J9R	O-C6	-2.73	1.18	1.24
4	2	1102	J9R	O1-C12	-2.36	1.38	1.44
4	2	1102	J9R	C3-C2	2.02	1.53	1.49

All (5) bond angle outliers are listed below:

Mol	Chain	Res	Type	Atoms	Z	Observed(°)	Ideal(°)
4	2	1102	J9R	C5-C6-N1	3.84	120.05	116.25
4	2	1102	J9R	C-N-N4	3.58	124.71	120.50
4	2	1102	J9R	C19-N4-N	3.05	107.41	104.23
4	2	1102	J9R	C3-C18-C7	2.99	119.05	117.44
4	2	1102	J9R	C18-C7-N2	-2.02	120.66	122.81

There are no chirality outliers.

All (26) torsion outliers are listed below:

Mol	Chain	Res	Type	Atoms
4	2	1102	J9R	C4-C5-C6-N1
4	2	1102	J9R	C4-C5-C6-O
6	3	1001	GLU	N-CA-CB-CG
6	3	1001	GLU	C-CA-CB-CG
3	2	1101	NAG	C8-C7-N2-C2
3	2	1101	NAG	O7-C7-N2-C2
3	3	1002	NAG	C8-C7-N2-C2
3	3	1002	NAG	O7-C7-N2-C2
4	2	1102	J9R	N2-C5-C6-N1
4	2	1102	J9R	N2-C5-C6-O
4	2	1102	J9R	C1-C2-C3-C4
4	2	1102	J9R	C19-C2-C3-C4
5	3	1004	CLR	C22-C23-C24-C25
5	2	1106	CLR	C22-C23-C24-C25
5	3	1003	CLR	C20-C22-C23-C24
5	2	1106	CLR	C17-C20-C22-C23
4	2	1102	J9R	C9-C10-N3-C15

Continued on next page...

Continued from previous page...

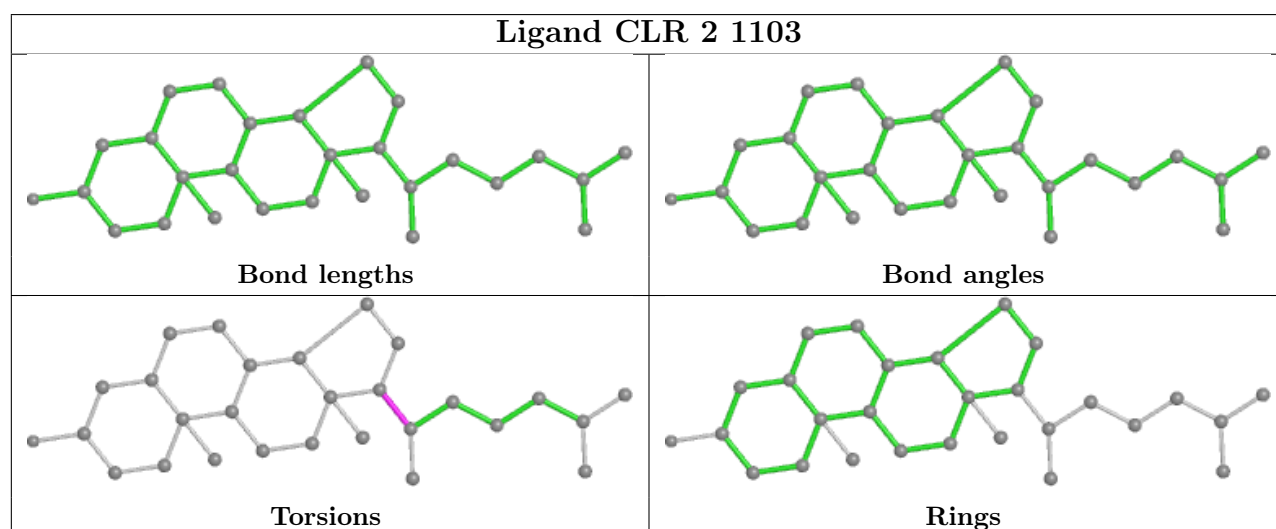
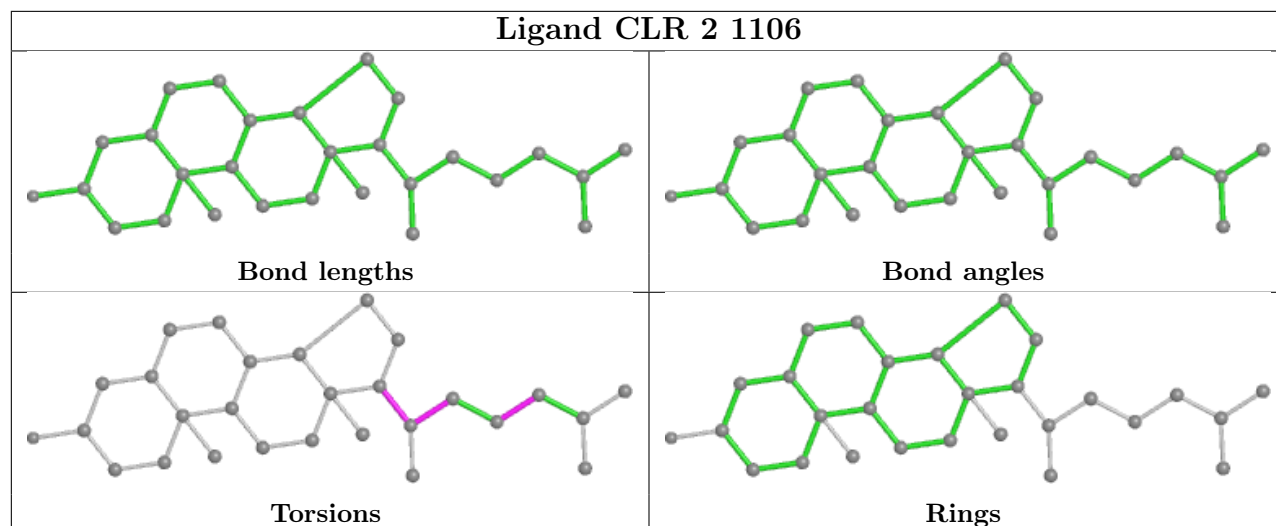
Mol	Chain	Res	Type	Atoms
4	2	1102	J9R	C9-C10-N3-C11
5	2	1106	CLR	C13-C17-C20-C22
5	2	1106	CLR	C16-C17-C20-C22
5	2	1103	CLR	C16-C17-C20-C22
5	2	1103	CLR	C13-C17-C20-C22
6	3	1001	GLU	OE1-CD-CG-CB
6	3	1001	GLU	OE2-CD-CG-CB
5	2	1103	CLR	C13-C17-C20-C21
5	2	1106	CLR	C13-C17-C20-C21

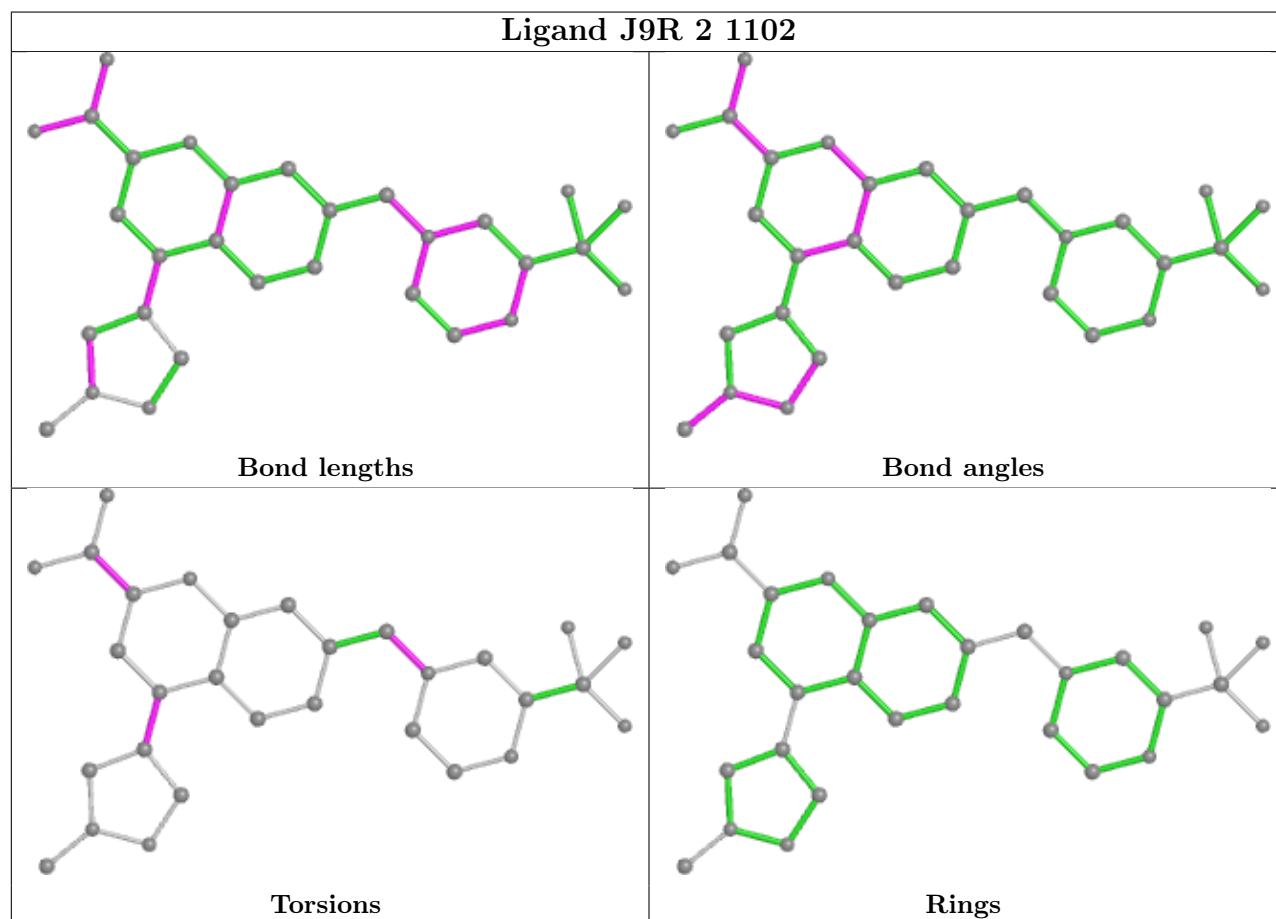
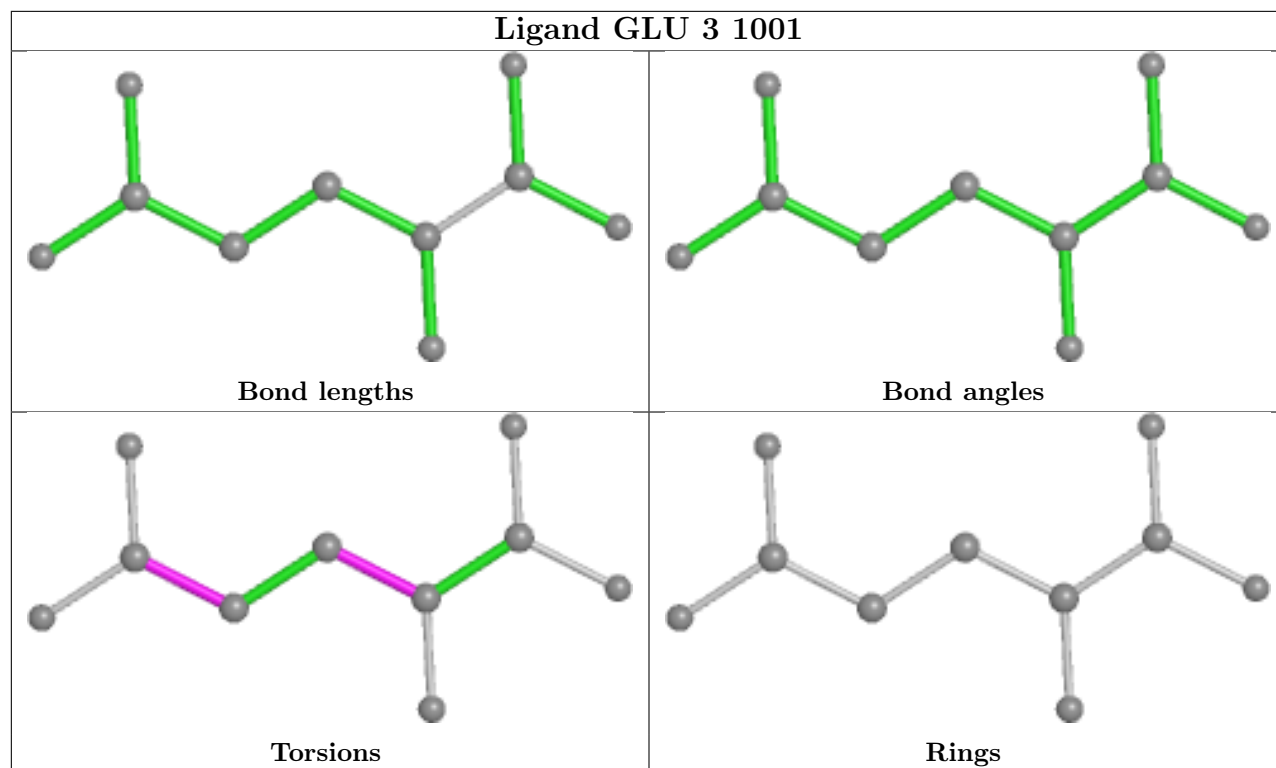
There are no ring outliers.

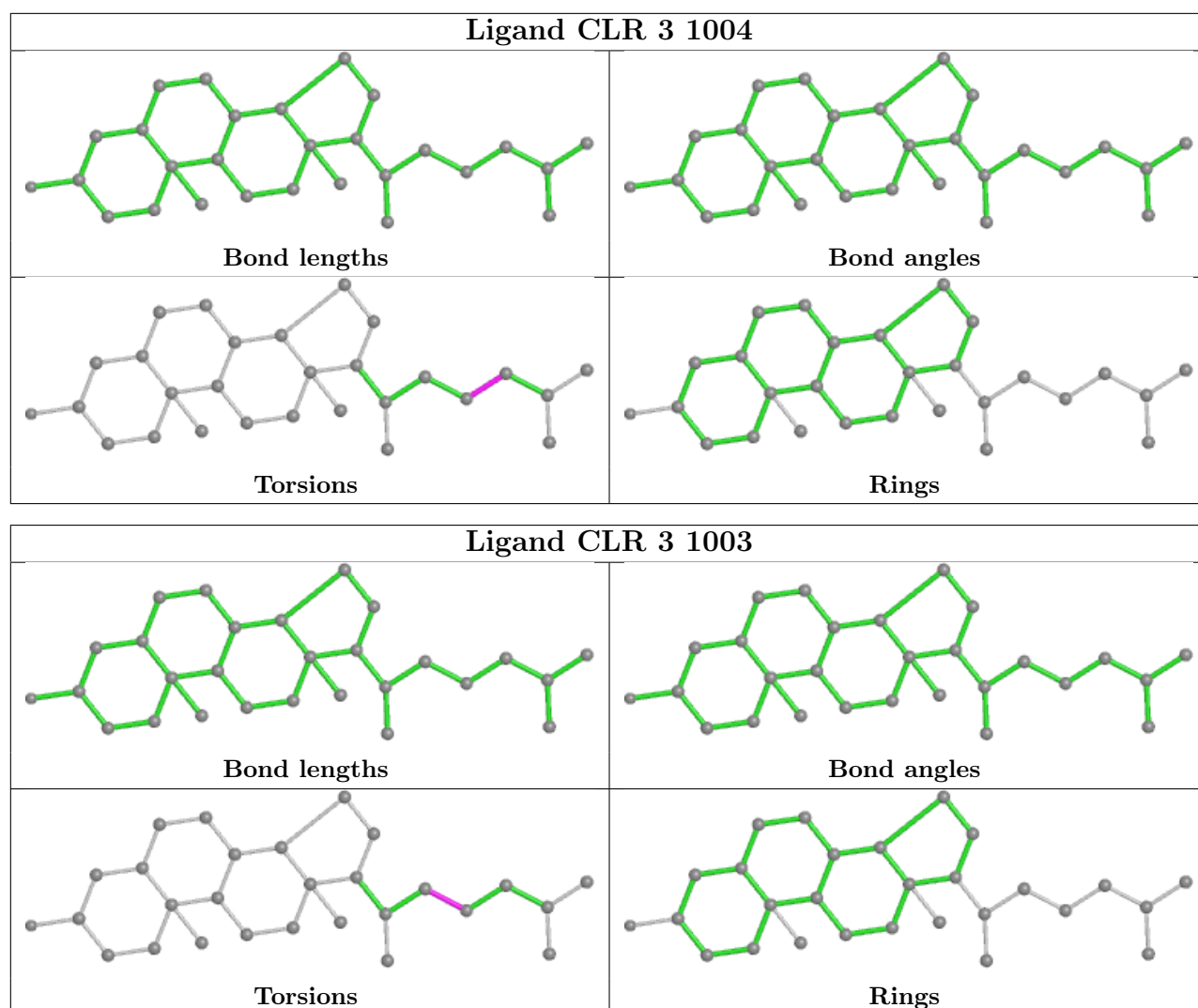
10 monomers are involved in 17 short contacts:

Mol	Chain	Res	Type	Clashes	Symm-Clashes
5	2	1106	CLR	3	0
5	2	1103	CLR	2	0
6	3	1001	GLU	2	0
5	2	1104	CLR	4	0
5	3	1007	CLR	2	0
4	2	1102	J9R	1	0
5	3	1006	CLR	1	0
5	2	1105	CLR	1	0
5	3	1004	CLR	2	0
5	3	1003	CLR	3	0

The following is a two-dimensional graphical depiction of Mogul quality analysis of bond lengths, bond angles, torsion angles, and ring geometry for all instances of the Ligand of Interest. In addition, ligands with molecular weight > 250 and outliers as shown on the validation Tables will also be included. For torsion angles, if less than 5% of the Mogul distribution of torsion angles is within 10 degrees of the torsion angle in question, then that torsion angle is considered an outlier. Any bond that is central to one or more torsion angles identified as an outlier by Mogul will be highlighted in the graph. For rings, the root-mean-square deviation (RMSD) between the ring in question and similar rings identified by Mogul is calculated over all ring torsion angles. If the average RMSD is greater than 60 degrees and the minimal RMSD between the ring in question and any Mogul-identified rings is also greater than 60 degrees, then that ring is considered an outlier. The outliers are highlighted in purple. The color gray indicates Mogul did not find sufficient equivalents in the CSD to analyse the geometry.







5.7 Other polymers [i](#)

There are no such residues in this entry.

5.8 Polymer linkage issues [i](#)

There are no chain breaks in this entry.